

# Record of Survey - DP 585160

**Survey Number** DP 585160  
**Surveyor Reference** 5851 - Sandpit Trust  
**Surveyor** Sam Henry Hartree  
**Survey Firm** Surveying The Bay Ltd (Hastings)  
**Surveyor Declaration** I Sam Henry Hartree, being a licensed cadastral surveyor, certify that--  
 (a) this dataset provided by me and its related survey are accurate, correct and in accordance with the Cadastral Survey Act 2002 and Cadastral Survey Rules 2021; and  
 (b) the survey was undertaken by me or under my personal direction.  
 Declared on 23 Jun 2023 09:57 AM

## Survey Details

**Dataset Description** LOTS 1 AND 2 BEING A SUBDIVISION OF LOT 1 DP 376572  
**Purpose** LT Subdivision  
**Status** Deposited **Type** Survey  
**Land District** Hawkes Bay **Survey Class** Class B  
**Meridional Circuit** Hawkes Bay 2000 **Vertical Datum** None

## Survey Dates

**Surveyed Date** 16/11/2022 **Certified Date** 23/06/2023  
**Submitted Date** 23/06/2023 09:57:21 **Survey Approval Date** 23/06/2023  
**Deposit Date** 18/05/2023

## Referenced Surveys

Survey Number	Land District	Bearing Correction
DP 12322	Hawkes Bay	0°00'00"
DP 7551	Hawkes Bay	0°00'00"
SO 6001	Hawkes Bay	0°00'00"
SO 6002	Hawkes Bay	0°00'00"
SO 5999	Hawkes Bay	0°00'00"
DP 376572	Hawkes Bay	0°00'00"

## Territorial Authorities

Hastings District

## Comprised In

RT 307800

## Created Parcels

Parcels	Parcel Intent	Area	RT Reference
Lot 1 Deposited Plan 585160	Fee Simple Title	73.0000 Ha	1102815
Lot 2 Deposited Plan 585160	Fee Simple Title	100.3400 Ha	1102816
Area K Deposited Plan 585160	Easement		
Area L Deposited Plan 585160	Easement		
Area M Deposited Plan 585160	Easement		
Area N Deposited Plan 585160	Easement		



# Record of Survey - DP 585160

---

## Created Parcels

Parcels	Parcel Intent	Area	RT Reference
Area X Deposited Plan 585160	Easement		
Area Z Deposited Plan 585160	Easement		
<b>Total Area</b>		<hr/> 173.3400 Ha	

# Mark and Vector

Survey Number DP 585160

Meridional Circuit Hawkes Bay 2000

From	To	Code	Bearing	Adpt Surv	Bearing Correction	Distance	Adpt Surv	Class
IS 1 DP 585160	12472	ob127	114°03'35" M			761.23 M		
IS 1 DP 585160	IS XIX DP 12322	ob128	115°56'35" M			659.12 M		
IS 1 DP 585160	IS VII DP 376572	ob129	96°28'25" M			290.38 M		
IS 1 DP 585160	IT XLIA DP 7551	ob130	301°14'55" M			923.49 M		
IS 1 DP 585160	IS 2 DP 585160	ob131	295°43'10" M			700.18 M		
IS 1 DP 585160	IS 3 DP 585160	ob132	319°00'10" M			469.29 M		
IS 1 DP 585160	IS 4 DP 585160	ob133	22°02'30" M			716.79 M		
IS 1 DP 585160	IS 5 DP 585160	ob134	12°56'55" M			286.33 M		
IS 5 DP 585160	IS 4 DP 585160	ob162	27°59'40" M			436.41 M		
IS 5 DP 585160	IS 3 DP 585160	ob163	281°25'05" M			379.54 M		
IS 5 DP 585160	IT XLIA DP 7551	ob164	283°11'10" M			876.79 M		
IS 5 DP 585160	IS 2 DP 585160	ob165	272°02'40" M			695.42 M		
IS 5 DP 585160	IS XIX DP 12322	ob166	137°01'55" M			775.43 M		
IS 5 DP 585160	12472	ob167	133°03'00" M			863.40 M		
IS 5 DP 585160	IS VII DP 376572	ob168	144°15'40" M			384.13 M		
12472	IS XIX DP 12322	ob153	282°08'00" A	DP 376572	0°00'00"	104.73 A	DP 376572	
IS XIX DP 12322	IS I DP 376572	ob155	4°19'00" A	DP 376572	0°00'00"	236.64 A	DP 376572	
IS I DP 376572	IS II DP 376572	ob0	52°43'00" A	DP 376572	0°00'00"	217.28 A	DP 376572	
IS II DP 376572	IT III DP 376572	ob1	69°20'00" A	DP 376572	0°00'00"	189.03 A	DP 376572	
IT III DP 376572	IS VI DP 376572	ob2	196°57'50" A	DP 376572	0°00'00"	237.07 A	DP 376572	
IS VI DP 376572	12472	ob4	220°29'00" A	DP 376572	0°00'00"	301.85 A	DP 376572	
IS XIX DP 12322	IS VII DP 376572	ob156	310°02'30" A	DP 376572	0°00'00"	397.33 A	DP 376572	
IS VII DP 376572	IT VI DP 376572	ob157	188°10'00" A	DP 376572	0°00'00"	137.91 A	DP 376572	
IT VI DP 376572	IT XVI DP 12322	ob5	154°56'00" A	DP 376572	0°00'00"	48.31 A	DP 376572	
IT XVI DP 12322	IS XVII DP 12322	ob7	83°04'00" A	DP 12322	0°00'00"	81.39 A	DP 12322	Class B
IS XVII DP 12322	IS XIX DP 12322	ob8	110°56'50" A	DP 376572	0°00'00"	238.24 A	DP 376572	
IS VII DP 376572	IS VIII DP 376572	ob158	142°27'00" A	DP 376572	0°00'00"	182.30 A	DP 376572	
IS VIII DP 376572	IS XVII DP 12322	ob11	228°38'00" A	DP 376572	0°00'00"	39.18 A	DP 376572	
12472	Z Patoka SD	ob154	310°12'10" A	DP 12322	0°00'00"	2,010.97 A	DP 376572	
Z Patoka SD	IS III SO 6002	ob12	135°50'00" A	SO 6002	0°00'00"	63.61 A	SO 6002	

# Mark and Vector

Survey Number DP 585160

Meridional Circuit Hawkes Bay 2000

From	To	Code	Bearing	Adpt Surv	Bearing Correction	Distance	Adpt Surv	Class
IS III SO 6002	IS IV SO 6002	ob13	180°51'00"	A SO 6002	0°00'00"	65.54 A	SO 6002	
IS IV SO 6002	IS V SO 6002	ob14	154°48'00"	A SO 6002	0°00'00"	76.81 A	SO 6002	
IS V SO 6002	IT XLIII DP 7551	ob15	160°44'00"	A SO 6002	0°00'00"	124.56 A	SO 6002	
IT XLIII DP 7551	IT XLIA DP 7551	ob16	197°23'00"	A SO 6001	0°00'00"	220.46 A	SO 6001	
IT XLIA DP 7551	IS I DP 12322	ob159	125°42'30"	A DP 12322	0°00'00"	106.56 A	DP 12322	
IS I DP 12322	IS II DP 12322	ob17	180°04'30"	A DP 12322	0°00'00"	46.65 A	DP 12322	Class B
IS II DP 12322	IT III DP 12322	ob18	156°00'30"	A DP 12322	0°00'00"	51.04 A	DP 12322	Class B
IT III DP 12322	UNMK 102 DP 585160	ob19	117°32'30"	A DP 12322	0°00'00"	6.29 C		Class B
UNMK 102 DP 585160	IS IV DP 12322	ob200	117°32'30"	A DP 12322	0°00'00"	85.48 C		Class B
IS IV DP 12322	IS V DP 12322	ob20	112°30'00"	A DP 12322	0°00'00"	98.61 A	DP 12322	Class B
IS V DP 12322	IS VI DP 12322	ob21	154°41'30"	A DP 12322	0°00'00"	205.88 A	DP 12322	Class B
IS VI DP 12322	IS VII DP 12322	ob22	98°30'00"	A DP 12322	0°00'00"	95.76 A	DP 12322	Class B
IS VII DP 12322	IS VIII DP 12322	ob23	113°53'30"	A DP 12322	0°00'00"	76.36 A	DP 12322	Class B
IS VIII DP 12322	IS IX DP 12322	ob24	91°00'00"	A DP 12322	0°00'00"	109.62 A	DP 12322	Class B
IS IX DP 12322	IS X DP 12322	ob25	73°12'00"	A DP 12322	0°00'00"	45.42 A	DP 12322	Class B
IS X DP 12322	IS XI DP 12322	ob26	106°25'30"	A DP 12322	0°00'00"	117.20 A	DP 12322	Class B
IS XI DP 12322	IS XII DP 12322	ob27	128°59'00"	A DP 12322	0°00'00"	42.04 A	DP 12322	Class B
IS XII DP 12322	IS XIII DP 12322	ob28	159°45'00"	A DP 12322	0°00'00"	38.04 A	DP 12322	Class B
IS XIII DP 12322	IS XIV DP 12322	ob29	99°27'00"	A DP 12322	0°00'00"	89.48 A	DP 12322	Class B
IS XIV DP 12322	IS XV DP 12322	ob30	125°47'20"	A DP 12322	0°00'00"	84.31 A	DP 12322	Class B
IS XV DP 12322	IT XVI DP 12322	ob31	134°29'00"	A DP 12322	0°00'00"	110.30 A	DP 12322	Class B
IT III DP 376572	IT IV DP 376572	ob3	52°32'50"	A DP 376572	0°00'00"	235.93 A	DP 376572	
IT IV DP 376572	IS V DP 376572	ob32	10°07'00"	A DP 376572	0°00'00"	50.27 A	DP 376572	
IS V DP 376572	IT LXII DP 7551	ob34	16°09'40"	A DP 376572	0°00'00"	205.32 A	DP 376572	
IT LXII DP 7551	IT III DP 376572	ob35	212°59'20"	A DP 376572	0°00'00"	465.15 A	DP 376572	
IT LXII DP 7551	IT LX DP 7551	ob36	300°35'00"	A DP 7551	0°00'00"	105.96 A	DP 7551	
IT LX DP 7551	IS LIX DP 7551	ob37	309°24'00"	A DP 7551	0°00'00"	93.46 A	DP 7551	
IS LIX DP 7551	IS LVIII DP 7551	ob38	279°14'00"	A DP 7551	0°00'00"	241.62 A	DP 7551	
IS LVIII DP 7551	IT LVI DP 7551	ob39	0°45'00"	A DP 7551	0°00'00"	148.12 A	DP 7551	
IT LVI DP 7551	IS LIV DP 7551	ob40	288°54'00"	A DP 7551	0°00'00"	850.44 A	DP 7551	
IS LIV DP 7551	IS LIII DP 7551	ob41	348°04'00"	A DP 7551	0°00'00"	184.67 A	DP 7551	
IS LIII DP 7551	UNMK (43) DP 12322	ob42	275°35'30"	A DP 7551	0°00'00"	56.53 A	DP 7551	
UNMK (43) DP 12322	PEG LII DP 7551	ob43	275°35'30"	A DP 7551	0°00'00"	12.07 A	DP 7551	Class B

# Mark and Vector

Survey Number DP 585160

Meridional Circuit Hawkes Bay 2000

From	To	Code	Bearing	Adpt Surv	Bearing Correction	Distance	Adpt Surv	Class
PEG LII DP 7551	IS LI DP 7551	ob45	258°53'30"	A DP 7551	0°00'00"	50.90 A	DP 7551	
IS LI DP 7551	IS L DP 7551	ob46	249°17'30"	A DP 7551	0°00'00"	59.89 A	DP 7551	
IS L DP 7551	IT XLIX DP 7551	ob47	237°22'30"	A DP 7551	0°00'00"	52.32 A	DP 7551	
IT XLIX DP 7551	PEG (48) DP 7551	ob48	290°56'00"	A DP 7551	0°00'00"	121.79 A	DP 7551	
PEG (48) DP 7551	IT XLVIII DP 7551	ob49	290°56'00"	A DP 7551	0°00'00"	0.60 A	DP 7551	
IT XLVIII DP 7551	IT XLV DP 7551	ob52	201°08'30"	A DP 7551	0°00'00"	87.51 A	DP 7551	
IT XLV DP 7551	IT (51) DP 7551	ob53	206°04'30"	A DP 7551	0°00'00"	168.92 A	DP 7551	
IT (51) DP 7551	Z Patoka SD	ob54	260°27'00"	A DP 7551	0°00'00"	378.32 A	DP 7551	
IS 1 DP 585160	POST (103) DP 12322	ob135	296°01'20"	M		751.95 M		
IS 1 DP 585160	POST (102) DP 12322	ob136	298°15'45"	M		786.17 M		
IS 1 DP 585160	POST (104) DP 12322	ob137	295°47'35"	M		663.47 M		
IS 1 DP 585160	POST 24 DP 585160	ob138	17°33'35"	M		941.95 M		
PEG (48) DP 7551	PEG LII DP 7551	ob50	86°36'00"	A DP 7551	0°00'00"	264.25 A	DP 7551	Class B
PEG (48) DP 7551	PEG XLVI DP 7551	ob51	199°15'00"	A DP 7551	0°00'00"	85.36 A	DP 7551	Class B
PEG XLVI DP 7551	PEG (53) SO 5999	ob55	212°48'30"	A DP 7551	0°00'00"	185.52 A	SO 5999	Class B
PEG (53) SO 5999	POST (54) SO 5999	ob56	250°34'00"	A SO 5999	0°00'00"	120.72 A	SO 5999	Class B
POST (54) SO 5999	POST (55) SO 5999	ob57	279°27'30"	A SO 5999	0°00'00"	123.13 A	SO 5999	Class B
POST (55) SO 5999	PEG (56) SO 6002	ob58	250°30'30"	A SO 5999	0°00'00"	122.45 A	SO 5999	Class B
PEG (56) SO 6002	POST (57) SO 6002	ob59	134°44'00"	A SO 6002	0°00'00"	17.60 A	SO 6002	Class B
POST (57) SO 6002	POST (58) SO 6002	ob60	124°03'00"	A SO 6002	0°00'00"	28.06 A	SO 6002	Class B
POST (58) SO 6002	POST (59) SO 6002	ob61	161°48'00"	A SO 6002	0°00'00"	30.58 A	SO 6002	Class B
POST (59) SO 6002	POST (60) SO 6002	ob62	183°13'00"	A SO 6002	0°00'00"	53.39 A	SO 6002	Class B
POST (60) SO 6002	POST (61) SO 6002	ob63	161°12'00"	A SO 6002	0°00'00"	45.77 A	SO 6002	Class B
POST (61) SO 6002	POST (62) SO 6002	ob64	140°24'00"	A SO 6002	0°00'00"	58.20 A	SO 6002	Class B
POST (62) SO 6002	POST (63) SO 6002	ob65	171°17'00"	A SO 6002	0°00'00"	17.00 A	SO 6002	Class B

# Mark and Vector

Survey Number DP 585160

Meridional Circuit Hawkes Bay 2000

From	To	Code	Bearing	Adpt Surv	Bearing Correction	Distance	Adpt Surv	Class
POST (63) SO 6002	POST (64) SO 6002	ob66	185°34'00"	A SO 6002	0°00'00"	33.80 A	SO 6002	Class B
POST (64) SO 6002	POST (65) SO 6002	ob67	165°42'00"	A SO 6002	0°00'00"	35.10 A	SO 6002	Class B
POST (65) SO 6002	POST (66) SO 6002	ob68	134°17'00"	A SO 6002	0°00'00"	22.93 A	SO 6002	Class B
POST (66) SO 6002	PEG XLII DP 7551	ob69	212°50'00"	A SO 6002	0°00'00"	7.74 A	SO 6002	Class B
PEG XLII DP 7551	PEG (68) SO 6001	ob70	234°32'20"	A SO 6001	0°00'00"	222.11 A	SO 6001	Class B
PEG (68) SO 6001	POST (69) SO 6001	ob71	222°21'00"	A SO 6001	0°00'00"	45.42 A	SO 6001	Class B
POST (69) SO 6001	POST (70) SO 6001	ob72	179°47'00"	A SO 6001	0°00'00"	60.19 A	SO 6001	Class B
POST (70) SO 6001	POST (71) SO 6001	ob73	212°56'00"	A SO 6001	0°00'00"	14.36 A	SO 6001	Class B
POST (71) SO 6001	PEG (72) SO 6001	ob74	64°17'00"	A SO 6001	0°00'00"	92.38 A	SO 6001	Class B
PEG (72) SO 6001	PEG (73) SO 6001	ob75	92°50'00"	A DP 12322	0°00'00"	73.18 A	DP 12322	Class B
PEG (73) SO 6001	IT XLIA DP 7551	ob76	185°43'00"	A DP 7551	0°00'00"	3.44 A	DP 7551	
PEG (73) SO 6001	PEG (74) DP 12322	ob77	197°34'50"	A DP 12322	0°00'00"	5.03 A	DP 12322	Class B
PEG (74) DP 12322	IS I DP 12322	ob79	124°45'00"	A DP 12322	0°00'00"	106.74 A	DP 12322	Class B
IT IV DP 376572	PEG 11 DP 376572	ob33	279°46'00"	A DP 376572	0°00'00"	41.06 A	DP 376572	
IS XVII DP 12322	POST (76) DP 12322	ob9	31°15'00"	A DP 12322	0°00'00"	6.74 A	DP 12322	Class B
POST (76) DP 12322	UNMK 103 DP 585160	ob81	103°56'00"	A DP 12322	0°00'00"	3.58 C		Class B
UNMK 103 DP 585160	POST (77) DP 12322	ob214	103°56'00"	A DP 12322	0°00'00"	27.18 C		Class A
POST (77) DP 12322	POST (78) DP 12322	ob82	175°01'00"	A DP 12322	0°00'00"	3.48 A	DP 12322	Class A
POST (78) DP 12322	PEG 1 DP 376572	ob83	108°30'40"	A DP 12322	0°00'00"	154.95 A	DP 376572	Class A
PEG 1 DP 376572	UNMK (80) DP 376572	ob84	5°16'30"	A DP 376572	0°00'00"	23.84 A	DP 376572	Class A
UNMK (80) DP 376572	PEG 2 DP 376572	ob85	5°16'30"	A DP 376572	0°00'00"	199.67 A	DP 376572	Class B
PEG 2 DP 376572	PEG 3 DP 376572	ob86	85°29'00"	A DP 376572	0°00'00"	90.26 A	DP 376572	Class B
PEG 3 DP 376572	PEG 4 DP 376572	ob87	350°22'00"	A DP 376572	0°00'00"	37.59 A	DP 376572	Class B
PEG 4 DP 376572	POST 5 DP 376572	ob88	50°01'00"	A DP 376572	0°00'00"	87.96 A	DP 376572	Class B

# Mark and Vector

Survey Number DP 585160

Meridional Circuit Hawkes Bay 2000

From	To	Code	Bearing	Adpt Surv	Bearing Correction	Distance	Adpt Surv	Class
POST 5 DP 376572	POST 6 DP 376572	ob89	74°32'00"	A DP 376572	0°00'00"	19.28 A	DP 376572	Class B
POST 6 DP 376572	POST 7 DP 376572	ob90	339°52'00"	A DP 376572	0°00'00"	26.23 A	DP 376572	Class B
POST 7 DP 376572	POST 8 DP 376572	ob91	81°54'00"	A DP 376572	0°00'00"	57.80 A	DP 376572	Class B
POST 8 DP 376572	POST 9 DP 376572	ob92	63°56'30"	A DP 376572	0°00'00"	129.24 A	DP 376572	Class B
POST 9 DP 376572	PEG 10 DP 376572	ob93	55°05'00"	A DP 376572	0°00'00"	141.86 A	DP 376572	Class B
PEG 10 DP 376572	PEG 11 DP 376572	ob94	57°21'00"	A DP 376572	0°00'00"	101.49 A	DP 376572	Class B
PEG 11 DP 376572	UNMK (118) DP 376572	ob80	57°21'00"	A DP 376572	0°00'00"	40.00 A	DP 376572	Class BD
UNMK (118) DP 376572	IT IV DP 376572	ob122	166°38'00"	C		29.34 C		
IT VI DP 376572	PEG 12 DP 376572	ob6	135°52'00"	A DP 376572	0°00'00"	11.93 A	DP 376572	
IS XVII DP 12322	PEG 17 DP 376572	ob10	321°34'00"	A DP 376572	0°00'00"	7.34 A	DP 376572	
PEG 12 DP 376572	POST (92) DP 12322	ob95	138°15'00"	A DP 12322	0°00'00"	37.80 A	DP 376572	Class B
POST (92) DP 12322	POST (93) DP 12322	ob98	100°59'00"	A DP 12322	0°00'00"	15.93 A	DP 12322	Class B
POST (93) DP 12322	POST (94) DP 12322	ob99	71°44'00"	A DP 12322	0°00'00"	36.93 A	DP 12322	Class B
POST (94) DP 12322	PEG 17 DP 376572	ob100	89°53'00"	A DP 12322	0°00'00"	12.51 A	DP 376572	Class B
PEG 17 DP 376572	UNMK (117) DP 376572	ob96	34°20'00"	A DP 376572	0°00'00"	26.03 A	DP 376572	Class B
UNMK (117) DP 376572	POST 16 DP 376572	ob120	34°20'00"	A DP 376572	0°00'00"	22.85 A	DP 376572	Class B
POST 16 DP 376572	PEG 15 DP 376572	ob101	39°06'00"	A DP 376572	0°00'00"	64.75 A	DP 376572	Class B
PEG 15 DP 376572	PEG 14 DP 376572	ob102	308°19'00"	A DP 376572	0°00'00"	59.97 A	DP 376572	Class B
PEG 14 DP 376572	PEG 13 DP 376572	ob103	263°18'00"	A DP 376572	0°00'00"	113.59 A	DP 376572	Class B
PEG 13 DP 376572	PEG 12 DP 376572	ob104	178°09'00"	A DP 376572	0°00'00"	94.95 A	DP 376572	Class B
PEG (73) SO 6001	POST (99) DP 12322	ob78	115°28'00"	A DP 12322	0°00'00"	35.93 A	DP 12322	Class B
POST (99) DP 12322	POST (100) DP 12322	ob105	120°43'00"	A DP 12322	0°00'00"	45.48 A	DP 12322	Class B
POST (100) DP 12322	POST (101) DP 12322	ob106	138°53'00"	A DP 12322	0°00'00"	49.53 A	DP 12322	Class B
POST (101) DP 12322	POST (102) DP 12322	ob107	192°11'00"	A DP 12322	0°00'00"	35.06 A	DP 12322	Class B

# Mark and Vector

Survey Number DP 585160

Meridional Circuit Hawkes Bay 2000

From	To	Code	Bearing	Adpt Surv	Bearing Correction	Distance	Adpt Surv	Class
POST (102) DP 12322	POST (103) DP 12322	ob171	158°26'00"	A DP 12322	0°00'00"	45.54 A	DP 12322	Class B
POST (103) DP 12322	POST 230 DP 585160	ob170	117°45'00"	A DP 12322	0°00'00"	3.72 C		Class B
POST 230 DP 585160	POST (104) DP 12322	ob173	117°45'00"	A DP 12322	0°00'00"	84.77 C		Class B
POST (104) DP 12322	POST (105) DP 12322	ob172	112°00'00"	A DP 12322	0°00'00"	98.41 A	DP 12322	Class B
POST (105) DP 12322	POST (106) DP 12322	ob108	154°59'30"	A DP 12322	0°00'00"	201.97 A	DP 12322	Class B
POST (106) DP 12322	POST (107) DP 12322	ob109	99°21'00"	A DP 12322	0°00'00"	97.10 A	DP 12322	Class B
POST (107) DP 12322	POST (108) DP 12322	ob110	114°57'00"	A DP 12322	0°00'00"	74.39 A	DP 12322	Class B
POST (108) DP 12322	POST (109) DP 12322	ob111	89°33'00"	A DP 12322	0°00'00"	110.72 A	DP 12322	Class B
POST (109) DP 12322	POST (110) DP 12322	ob112	78°50'00"	A DP 12322	0°00'00"	46.23 A	DP 12322	Class B
POST (110) DP 12322	POST (111) DP 12322	ob113	105°12'00"	A DP 12322	0°00'00"	114.81 A	DP 12322	Class B
POST (111) DP 12322	POST (112) DP 12322	ob114	142°11'00"	A DP 12322	0°00'00"	5.79 A	DP 12322	Class B
POST (112) DP 12322	POST (113) DP 12322	ob115	133°17'00"	A DP 12322	0°00'00"	43.55 A	DP 12322	Class B
POST (113) DP 12322	POST (114) DP 12322	ob116	154°25'00"	A DP 12322	0°00'00"	35.65 A	DP 12322	Class B
POST (114) DP 12322	POST (115) DP 12322	ob117	101°11'00"	A DP 12322	0°00'00"	85.07 A	DP 12322	Class B
POST (115) DP 12322	POST (116) DP 12322	ob118	116°10'00"	A DP 12322	0°00'00"	95.01 A	DP 12322	Class B
POST (116) DP 12322	PEG 12 DP 376572	ob119	138°15'00"	A DP 12322	0°00'00"	72.64 A	DP 12322	Class B
PEG 17 DP 376572	POST (76) DP 12322	ob97	89°53'00"	A DP 376572	0°00'00"	8.07 A	DP 376572	Class B
UNMK (117) DP 376572	UNMK 119 DP 585160	ob121	108°30'40"	A DP 376572	0°00'00"	10.70 C		Class B
UNMK 119 DP 585160	UNMK (80) DP 376572	ob198	108°30'40"	A DP 376572	0°00'00"	171.47 C		Class A
IT XLIA DP 7551	IS VII SO 6001	ob160	299°04'30"	A SO 6001	0°00'00"	136.07 A	SO 6001	
IS VII SO 6001	IS VIII SO 6001	ob123	206°19'00"	A SO 6001	0°00'00"	110.48 A	SO 6001	
IS VIII SO 6001	IS VIIIA SO 6001	ob124	212°39'00"	A SO 6001	0°00'00"	35.69 A	SO 6001	
IS VIIIA SO 6001	IS VIIIB SO 6001	ob125	62°51'00"	A SO 6001	0°00'00"	131.06 A	SO 6001	
IS VIIIB SO 6001	IT XLIA DP 7551	ob126	87°28'00"	A SO 6001	0°00'00"	70.65 A	SO 6001	



# Mark and Vector

Survey Number DP 585160

Meridional Circuit Hawkes Bay 2000

From	To	Code	Bearing	Adpt Surv	Bearing Correction	Distance	Adpt Surv	Class
UNMK 102 DP 585160	POST 230 DP 585160	ob201	29°55'00"	C		8.61 C		Class B
POST 230 DP 585160	POST 10 DP 585160	ob174	29°55'00"	C		3.53 C		Class B
POST 10 DP 585160	POST 11 DP 585160	ob176	51°48'00"	C		171.33 C		Class B
POST 11 DP 585160	POST 12 DP 585160	ob177	142°07'00"	C		39.21 C		Class B
POST 12 DP 585160	POST 13 DP 585160	ob178	116°43'00"	C		52.69 C		Class B
POST 13 DP 585160	UNMK 301 DP 585160	ob179	100°08'00"	C		153.65 C		Class B
UNMK 301 DP 585160	POST 14 DP 585160	ob191	100°08'00"	C		4.05 C		Class B
POST 14 DP 585160	UNMK 302 DP 585160	ob180	77°25'30"	C		2.20 C		Class B
UNMK 302 DP 585160	POST 15 DP 585160	ob192	77°25'30"	C		173.70 C		Class B
POST 15 DP 585160	UNMK 303 DP 585160	ob181	50°34'00"	C		35.53 C		Class B
UNMK 303 DP 585160	UNMK 304 DP 585160	ob194	50°34'00"	C		11.39 C		Class B
UNMK 304 DP 585160	POST 16 DP 585160	ob196	50°34'00"	C		39.06 C		Class B
POST 16 DP 585160	POST 17 DP 585160	ob182	50°41'00"	C		56.51 C		Class B
POST 17 DP 585160	POST 18 DP 585160	ob183	79°02'00"	C		68.11 C		Class B
POST 18 DP 585160	POST 19 DP 585160	ob184	92°37'00"	C		70.07 C		Class B
POST 19 DP 585160	POST 20 DP 585160	ob185	43°38'30"	C		227.66 C		Class B
POST 20 DP 585160	POST 21 DP 585160	ob186	17°29'00"	C		3.64 C		Class B
POST 21 DP 585160	POST 22 DP 585160	ob187	356°15'00"	C		100.69 C		Class B
POST 22 DP 585160	POST 23 DP 585160	ob188	348°54'00"	C		43.53 C		Class B
POST 23 DP 585160	POST 24 DP 585160	ob189	18°52'00"	C		98.68 C		Class B
IS 1 DP 585160	POST 10 DP 585160	ob139	296°17'00"	M		748.00 M		
IS 1 DP 585160	POST 11 DP 585160	ob140	309°12'00"	M		691.70 M		
IS 1 DP 585160	POST 12 DP 585160	ob141	308°25'55"	M		653.54 M		
IS 1 DP 585160	POST 13 DP 585160	ob142	309°27'00"	M		602.04 M		

# Mark and Vector

Survey Number DP 585160

Meridional Circuit Hawkes Bay 2000

From	To	Code	Bearing	Adpt Surv	Bearing Correction	Distance	Adpt Surv	Class
IS 1 DP 585160	POST 14 DP 585160	ob143	318°53'20" M			470.92 M		
IS 1 DP 585160	POST 15 DP 585160	ob144	340°39'40" M			416.60 M		
IS 1 DP 585160	POST 16 DP 585160	ob145	350°55'10" M			453.39 M		
IS 1 DP 585160	POST 17 DP 585160	ob146	356°42'20" M			484.31 M		
IS 1 DP 585160	POST 18 DP 585160	ob147	4°29'40" M			498.00 M		
IS 1 DP 585160	POST 19 DP 585160	ob148	12°27'50" M			505.17 M		
IS 1 DP 585160	POST 20 DP 585160	ob149	22°01'20" M			709.80 M		
IS 1 DP 585160	POST 21 DP 585160	ob150	21°59'55" M			713.43 M		
IS 1 DP 585160	POST 22 DP 585160	ob151	18°53'05" M			805.31 M		
IS 1 DP 585160	POST 23 DP 585160	ob152	17°24'25" M			843.30 M		
IS 5 DP 585160	POST 230 DP 585160	ob169	273°48'55" M			738.22 M		
IS 2 DP 585160	POST 230 DP 585160	ob161	300°18'00" C			48.19 C		
POST 24 DP 585160	UNMK 25 DP 585160	ob175	18°52'00" C			57.13 C		Class BD
UNMK 25 DP 585160	IS 4 DP 585160	ob190	186°40'20" C			289.68 C		
UNMK 304 DP 585160	UNMK 305 DP 585160	ob197	111°59'00" C			105.91 C		Class B
UNMK 305 DP 585160	UNMK 306 DP 585160	ob202	131°34'00" C			43.64 C		Class B
UNMK 306 DP 585160	UNMK 307 DP 585160	ob203	157°18'00" C			72.93 C		Class B
UNMK 307 DP 585160	UNMK 308 DP 585160	ob204	134°24'00" C			10.26 C		Class B
UNMK 308 DP 585160	UNMK 309 DP 585160	ob205	115°15'00" C			116.28 C		Class B
UNMK 309 DP 585160	UNMK 310 DP 585160	ob206	108°40'00" C			27.05 C		Class B
UNMK 310 DP 585160	UNMK 311 DP 585160	ob207	100°18'00" C			63.49 C		Class B
UNMK 311 DP 585160	UNMK 312 DP 585160	ob208	129°29'00" C			257.62 C		Class B
UNMK 312 DP 585160	UNMK 313 DP 585160	ob209	143°42'00" C			15.32 C		Class B
UNMK 313 DP 585160	UNMK 314 DP 585160	ob210	154°42'00" C			40.97 C		Class B

# Mark and Vector

Survey Number DP 585160

Meridional Circuit Hawkes Bay 2000

From	To	Code	Bearing	Adpt Surv	Bearing Correction	Distance	Adpt Surv	Class
UNMK 314 DP 585160	UNMK 315 DP 585160	ob211	180°35'00"	C		38.18 C		Class B
UNMK 315 DP 585160	UNMK 316 DP 585160	ob212	176°27'00"	C		23.38 C		Class B
UNMK 316 DP 585160	UNMK 119 DP 585160	ob213	219°16'00"	C		148.34 C		Class B
UNMK 119 DP 585160	UNMK 124 DP 585160	ob199	219°16'00"	C		3.35 C		Class A
UNMK 124 DP 585160	UNMK 103 DP 585160	ob215	214°20'00"	C		19.80 C		Class A
UNMK 303 DP 585160	UNMK 317 DP 585160	ob195	111°59'00"	C		109.63 C		Class B
UNMK 317 DP 585160	UNMK 318 DP 585160	ob216	131°34'00"	C		39.63 C		Class B
UNMK 318 DP 585160	UNMK 319 DP 585160	ob217	157°18'00"	C		72.68 C		Class B
UNMK 319 DP 585160	UNMK 320 DP 585160	ob218	134°24'00"	C		13.97 C		Class B
UNMK 320 DP 585160	UNMK 321 DP 585160	ob219	115°15'00"	C		118.54 C		Class B
UNMK 321 DP 585160	UNMK 322 DP 585160	ob220	108°40'00"	C		28.36 C		Class B
UNMK 322 DP 585160	UNMK 323 DP 585160	ob221	100°18'00"	C		61.61 C		Class B
UNMK 323 DP 585160	UNMK 324 DP 585160	ob222	129°29'00"	C		253.78 C		Class B
UNMK 324 DP 585160	UNMK 325 DP 585160	ob223	143°42'00"	C		13.11 C		Class B
UNMK 325 DP 585160	UNMK 326 DP 585160	ob224	154°42'00"	C		37.70 C		Class B
UNMK 326 DP 585160	UNMK 327 DP 585160	ob225	180°35'00"	C		36.24 C		Class B
UNMK 327 DP 585160	UNMK 328 DP 585160	ob226	176°27'00"	C		19.82 C		Class B
UNMK 328 DP 585160	UNMK (117) DP 376572	ob227	219°16'00"	C		148.21 C		Class B
UNMK 302 DP 585160	UNMK 329 DP 585160	ob193	132°54'00"	C		348.39 C		Class B
UNMK 329 DP 585160	UNMK 330 DP 585160	ob228	129°24'00"	C		66.50 C		Class B
UNMK 330 DP 585160	UNMK 331 DP 585160	ob229	62°59'00"	C		1.64 C		Class B
UNMK 331 DP 585160	UNMK 332 DP 585160	ob230	152°59'00"	C		6.00 C		Class B
UNMK 332 DP 585160	UNMK 333 DP 585160	ob231	242°59'00"	C		6.00 C		Class B
UNMK 333 DP 585160	UNMK 334 DP 585160	ob232	332°59'00"	C		2.00 C		Class B

# Mark and Vector

Survey Number DP 585160

Meridional Circuit Hawkes Bay 2000

From	To	Code	Bearing	Adpt Surv	Bearing Correction	Distance	Adpt Surv	Class
UNMK 334 DP 585160	UNMK 335 DP 585160	ob233	242°59'00"	C		7.22 C		Class B
UNMK 335 DP 585160	UNMK 336 DP 585160	ob234	264°22'00"	C		20.46 C		Class B
UNMK 336 DP 585160	UNMK 337 DP 585160	ob235	354°22'00"	C		4.00 C		Class B
UNMK 337 DP 585160	UNMK 338 DP 585160	ob236	84°22'00"	C		19.70 C		Class B
UNMK 338 DP 585160	UNMK 339 DP 585160	ob237	62°59'00"	C		6.46 C		Class B
UNMK 339 DP 585160	UNMK 340 DP 585160	ob238	309°24'00"	C		64.87 C		Class B
UNMK 340 DP 585160	UNMK 301 DP 585160	ob239	312°54'00"	C		353.16 C		Class B
UNMK (43) DP 12322	UNMK 400 DP 585160	ob44	163°32'00"	C		26.89 C		Class B
UNMK 400 DP 585160	UNMK 401 DP 585160	ob240	135°33'00"	C		22.54 C		Class B
UNMK 401 DP 585160	UNMK 402 DP 585160	ob241	174°54'00"	C		59.40 C		Class B
UNMK 402 DP 585160	UNMK 403 DP 585160	ob242	164°44'00"	C		38.24 C		Class B
UNMK 403 DP 585160	UNMK 404 DP 585160	ob243	169°11'00"	C		61.38 C		Class B
UNMK 404 DP 585160	UNMK 405 DP 585160	ob244	139°49'00"	C		27.17 C		Class B
UNMK 405 DP 585160	UNMK 406 DP 585160	ob245	123°04'00"	C		77.89 C		Class B
UNMK 406 DP 585160	UNMK 407 DP 585160	ob246	114°50'00"	C		116.23 C		Class B
UNMK 407 DP 585160	UNMK 408 DP 585160	ob247	107°39'00"	C		48.07 C		Class B
UNMK 408 DP 585160	UNMK 409 DP 585160	ob248	98°17'00"	C		72.92 C		Class B
UNMK 409 DP 585160	UNMK 25 DP 585160	ob249	108°25'00"	C		33.38 C		Class BD

Mark Name	Mark Condition	Description
12472		Down 0.05m in grass berm
IS 1 DP 585160		Down 0.25m in grass berm
IS 2 DP 585160		Down 0.25m in grass berm
IS 3 DP 585160		Down 0.25m in grass on south side of fence
IS 4 DP 585160		Down 0.25m on east side of fence
IS 5 DP 585160		Down 0.25m in grass between track and fence
IS VII DP 376572		Down 0.2m in grass on north side of fence

# Mark and Vector

Survey Number DP 585160  
Meridional Circuit Hawkes Bay 2000

Mark Name	Mark Condition	Description
IS XIX DP 12322		Down 0.05m in grass berm
IT XLIA DP 7551		Down 0.3m in grass on north side of fence
IS I DP 12322	Searched For and Not Found	
IS II DP 12322	Searched For and Not Found	
IS IV DP 12322	Searched For and Not Found	
IS V DP 12322	Searched For and Not Found	
IS VI DP 12322	Searched For and Not Found	
IS XI DP 12322	Searched For and Not Found	
IT III DP 12322	Searched For and Not Found	

\*\*\* End of Report \*\*\*



<b>MEMORANDUM OF EASEMENTS</b> (Pursuant to s243 Resource Management Act 1991)			
<b>PURPOSE</b>	<b>SHOWN</b>	<b>SERVIENT TENEMENT (Burdened Land)</b>	<b>DOMINANT TENEMENT (Benefited Land)</b>
RIGHT OF WAY	L, M, Z	LOT 2	LOT 1
	K	LOT 1	LOT 2

<b>SCHEDULE OF PROPOSED EASEMENTS</b>			
<b>PURPOSE</b>	<b>SHOWN</b>	<b>SERVIENT TENEMENT (Burdened Land)</b>	<b>DOMINANT TENEMENT (Benefited Land)</b>
RIGHT TO CONVEY WATER	X	LOT 2	LOT 1

<b>SCHEDULE OF EXISTING EASEMENTS</b>			
<b>PURPOSE</b>	<b>SHOWN</b>	<b>SERVIENT TENEMENT (Burdened Land)</b>	<b>CREATING DOCUMENT</b>
RIGHT OF WAY	K	LOT 1	247200
	L	LOT 2	247200
	M & N	LOT 2	7197832.3

<b>SCHEDULE OF EXISTING EASEMENTS TO BE SURRENDERED</b>			
<b>PURPOSE</b>	<b>SHOWN</b>	<b>SERVIENT TENEMENT (Burdened Land)</b>	<b>CREATING DOCUMENT</b>
RIGHT TO CONVEY WATER	B & C ON DP 398163	LOT 1 DP 376572	7674585.1
	A ON DP 404344	LOT 1 DP 376572	7795778.1

# Occupation Diagram

NOTES:  
 - OCCUPATION SHOWN AT THE TIME OF SURVEY  
 - NO OCCUPATION UNLESS OTHERWISE STATED

CLIENT: 5851 - Sandpit Trust

PROJECT: OCCUPATION DIAGRAM OF DP 585160



TITLE: OCCUPATION DIAGRAM

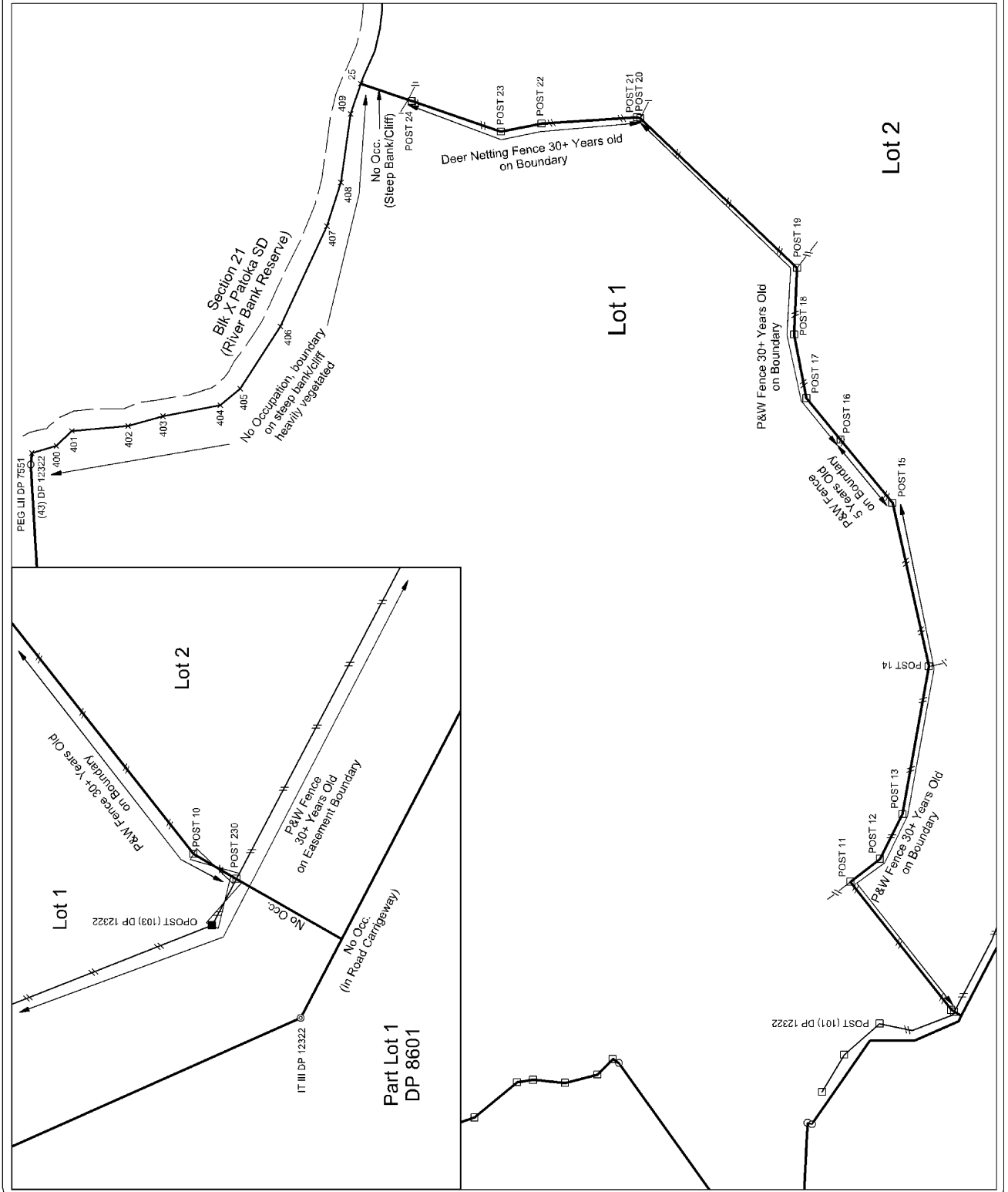
SCALE: 1:1000 @A3

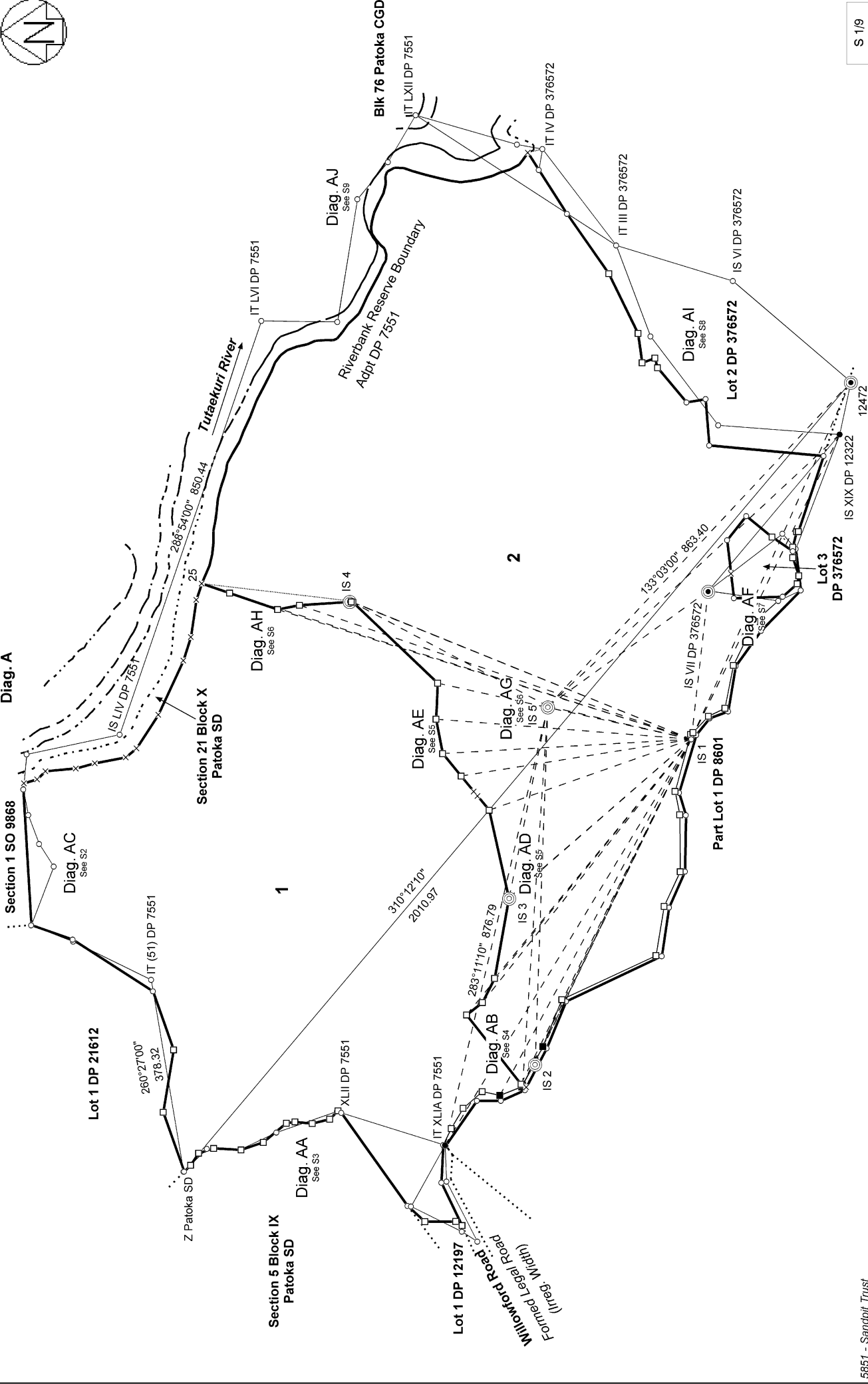
DATE: Wed, Jun 21 13:50:12 2023

DRAWN BY: SH

DRAWING NO: 5851/2

SHEET: 1/1





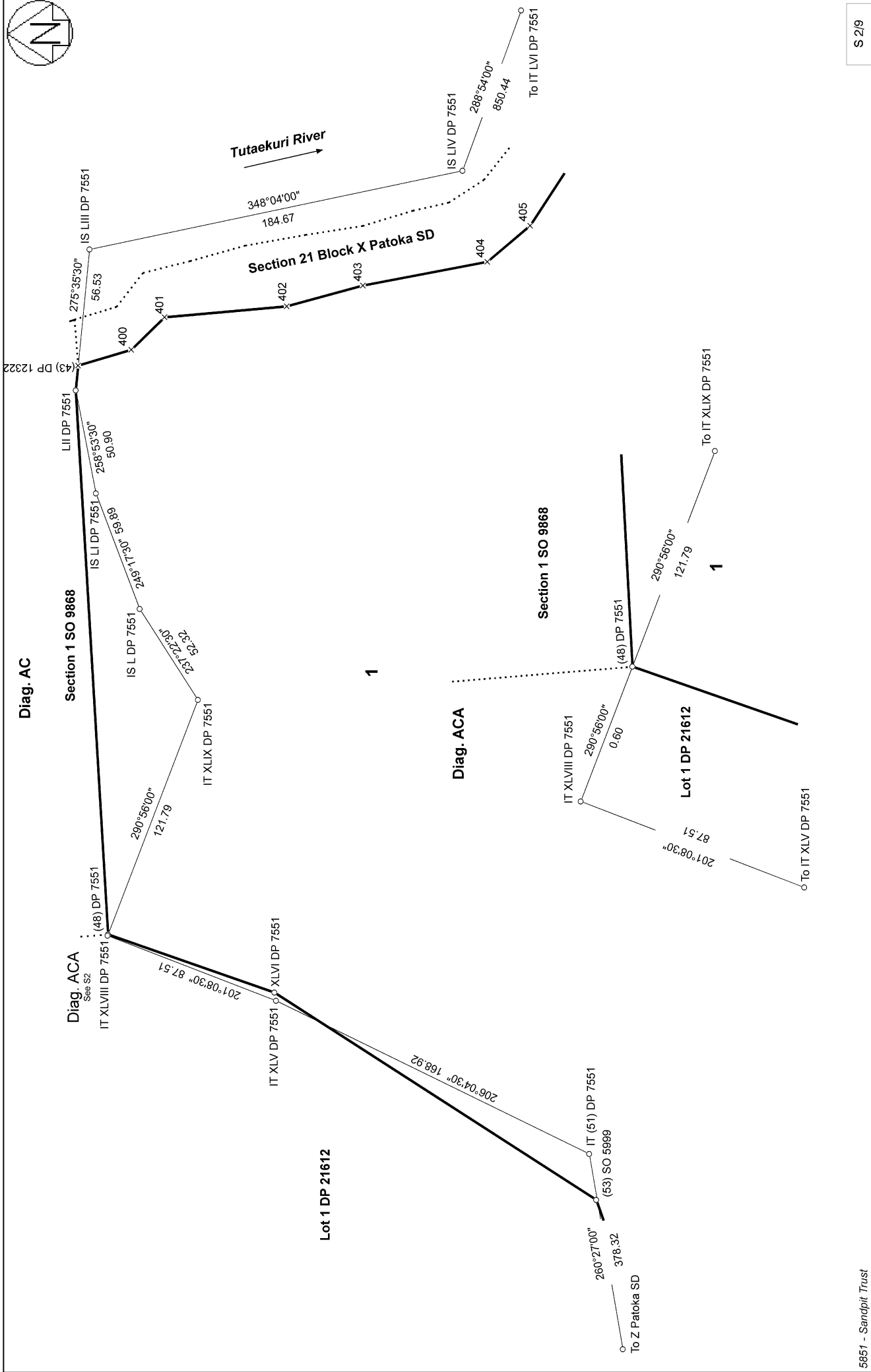
LOTS 1 AND 2 BEING A SUBDIVISION OF LOT 1 DP 376572

Surveyor: Sam Henry Hartree  
 Firm: Surveying The Bay Ltd (Hastings)  
 Date of Survey: 16/11/2022

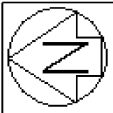
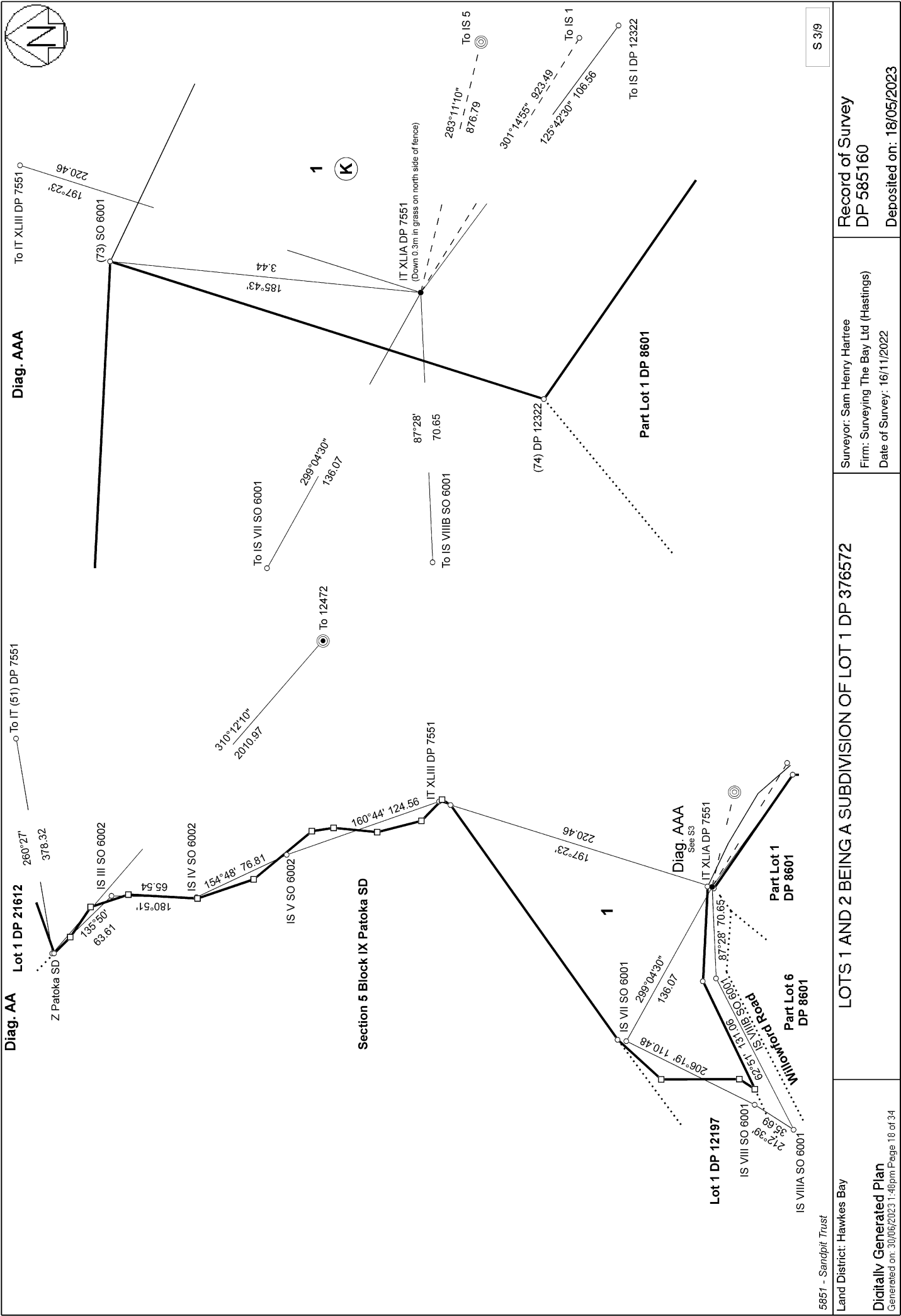
Record of Survey  
 DP 585160

Deposited on: 18/05/2023





S 2/9			
<p>5851 - Sandpiti Trust          Land District: Hawkes Bay</p> <p><b>Digitally Generated Plan</b>  <small>Generated on: 30/06/2023 1:46pm Page 17 of 34</small></p>	<p><b>LOTS 1 AND 2 BEING A SUBDIVISION OF LOT 1 DP 376572</b></p>	<p>Surveyor: Sam Henry Hartree          Firm: Surveying The Bay Ltd (Hastings)          Date of Survey: 16/11/2022</p>	<p>Record of Survey          DP 585160          Deposited on: 18/05/2023</p>



S 3/9

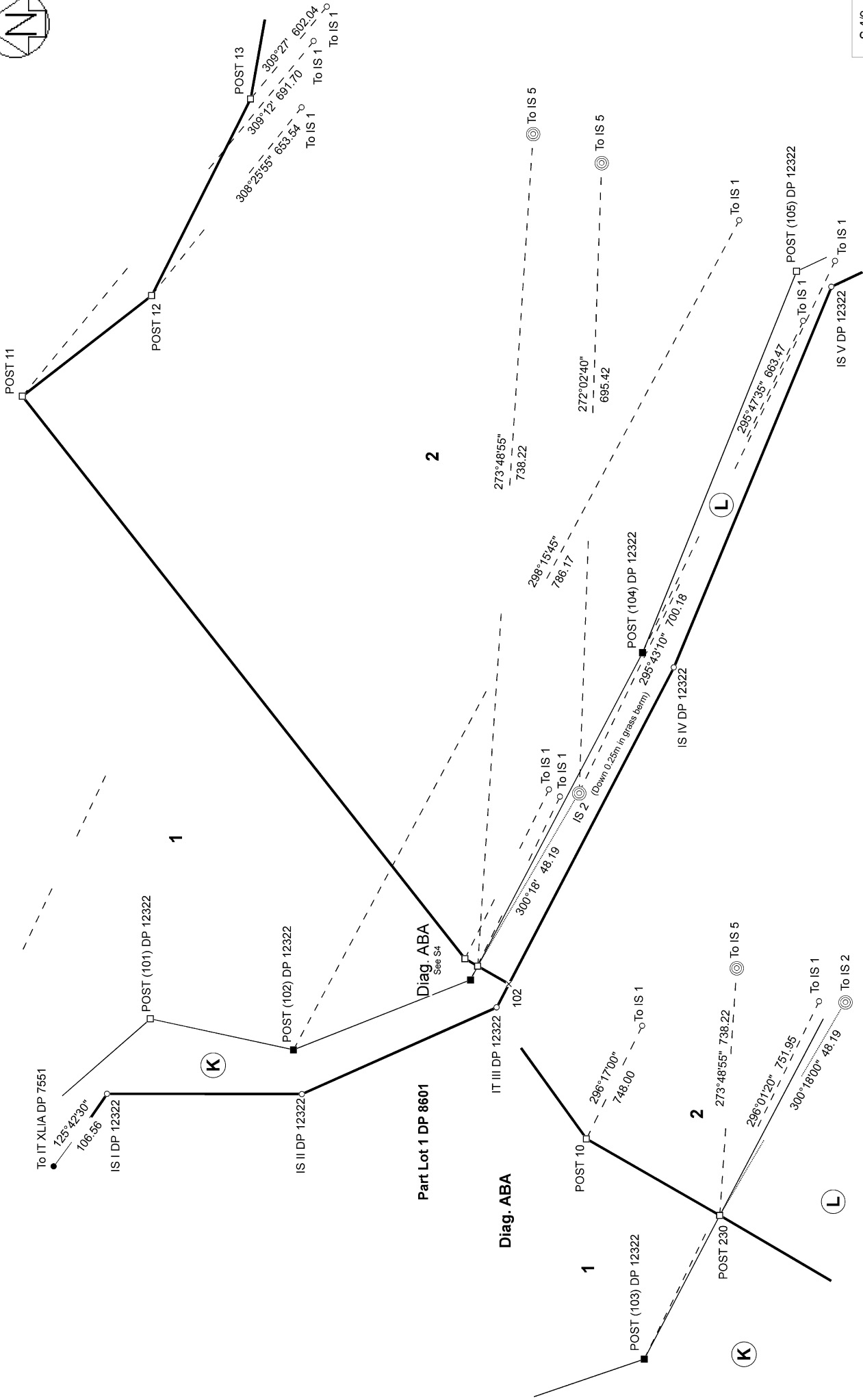
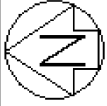
Record of Survey  
DP 585160  
Deposited on: 18/05/2023

Surveyor: Sam Henry Hartree  
Firm: Surveying The Bay Ltd (Hastings)  
Date of Survey: 16/11/2022

LOTS 1 AND 2 BEING A SUBDIVISION OF LOT 1 DP 376572

5851 - Sandpitt Trust  
Land District: Hawkes Bay  
**Digitally Generated Plan**  
Generated on: 30/06/2023 1:46pm Page 18 of 34

Diag. AB



S 4/9

5851 - Sandpitt Trust

Land District: Hawkes Bay

Digitally Generated Plan

Generated on: 30/06/2023 1:46pm Page 19 of 34

LOTS 1 AND 2 BEING A SUBDIVISION OF LOT 1 DP 376572

Surveyor: Sam Henry Hartree  
Firm: Surveying The Bay Ltd (Hastings)  
Date of Survey: 16/11/2022

Record of Survey  
DP 585160

Deposited on: 18/05/2023

Diag. AD

1



POST 14

POST 15

340°39'40"

416.60

To IS 1

IS 3

(Down 0.25m in grass on south side of fence)

318°53'20"

470.92

To IS 1

281°25'06"

379.54

To IS 5

Diag. AE

1

POST 17

2

356°42'20"

484.31

To IS 1

POST 16

350°55'10"

453.39

To IS 1

POST 18

4°29'40"

498.00

To IS 1

POST 19

12°27'50"

505.17

To IS 1



5851 - Sandpitt Trust

Land District: Hawkes Bay

LOTS 1 AND 2 BEING A SUBDIVISION OF LOT 1 DP 376572

Surveyor: Sam Henry Hartree  
Firm: Surveying The Bay Ltd (Hastings)  
Date of Survey: 16/11/2022

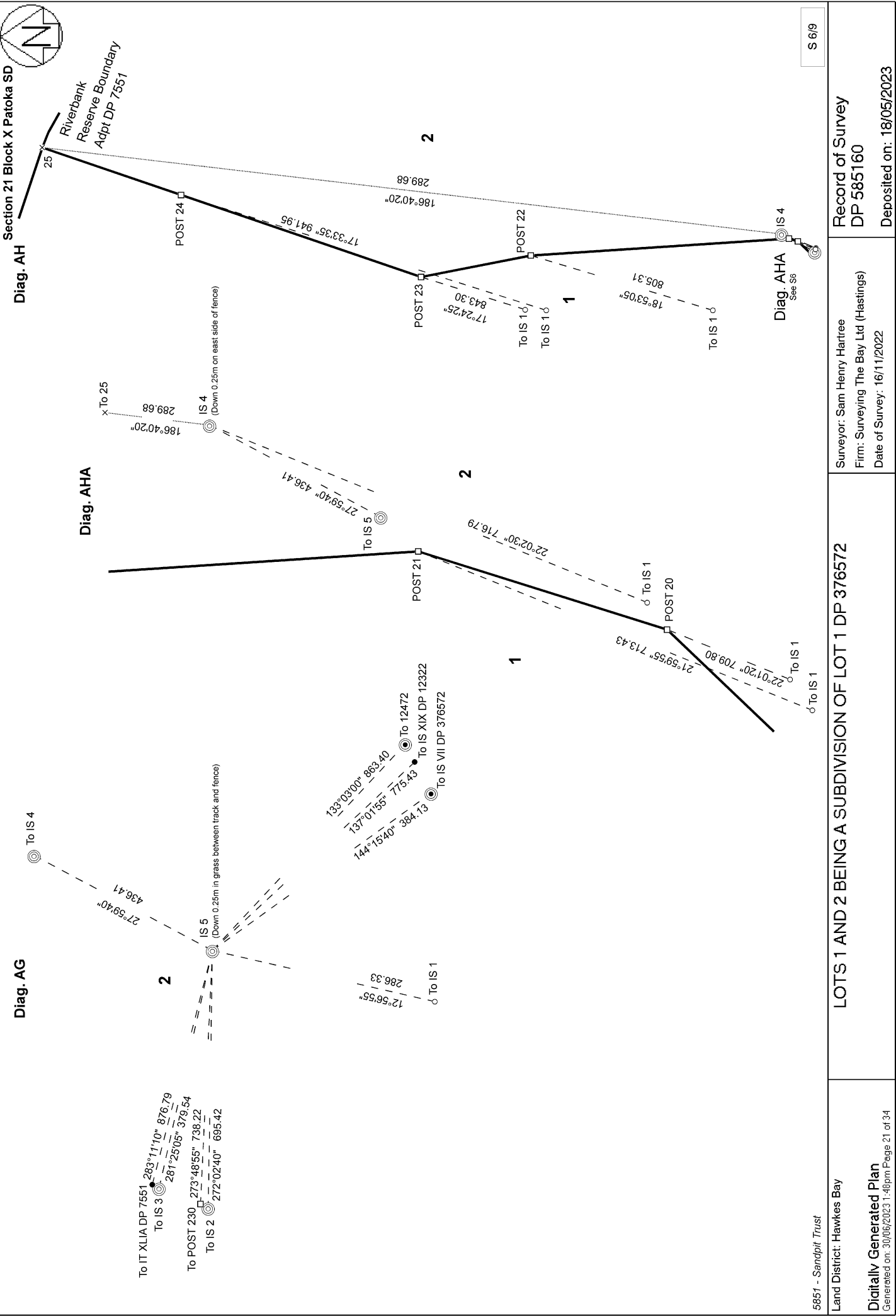
S 5/9

Record of Survey  
DP 585160

Digitally Generated Plan

Generated on: 30/06/2023 1:46pm Page 20 of 34

Deposited on: 18/05/2023



5851 - Sandpitt Trust

Land District: Hawkes Bay

**Digitally Generated Plan**

Generated on: 30/06/2023 1:46pm Page 21 of 34

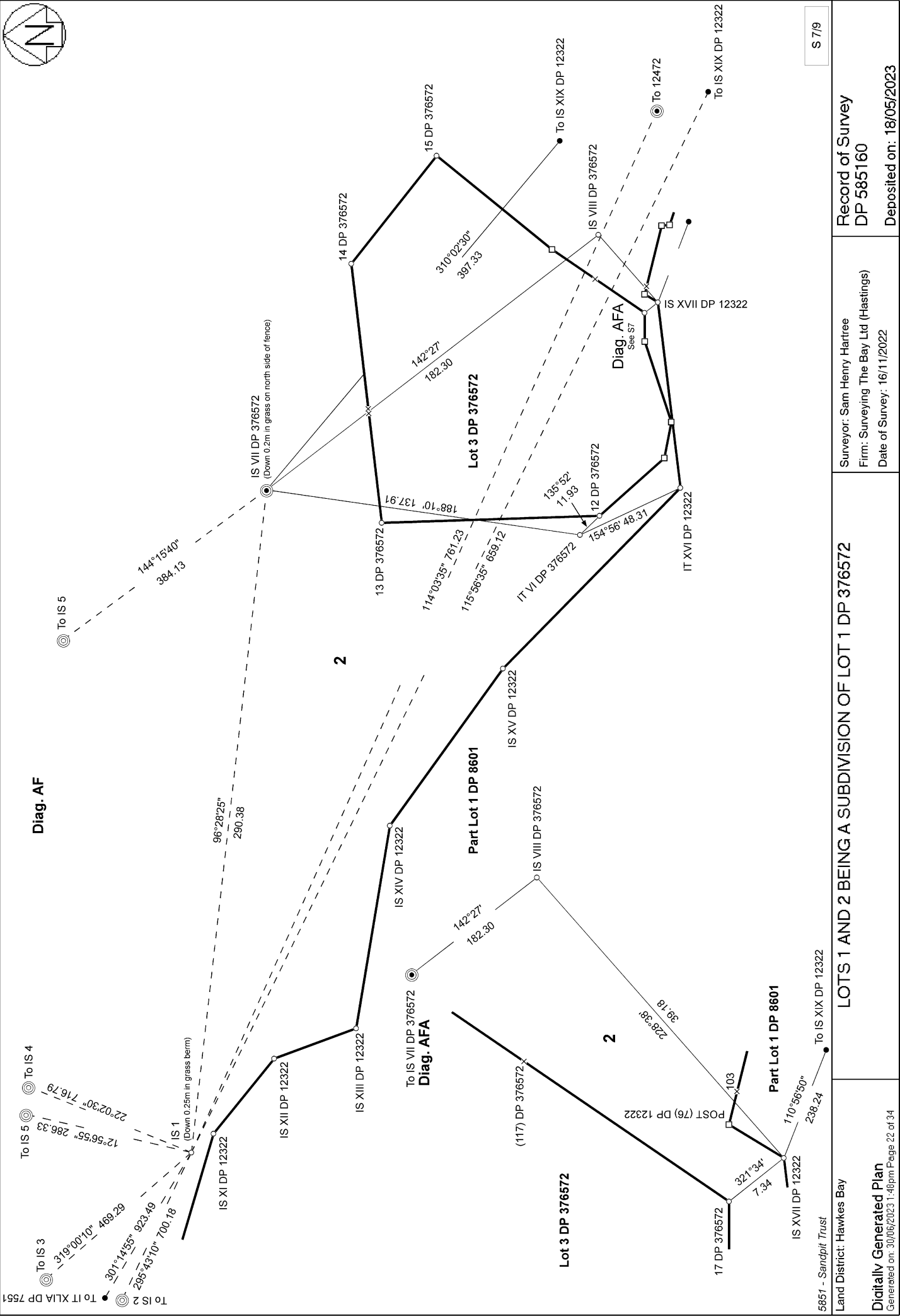
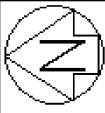
LOTS 1 AND 2 BEING A SUBDIVISION OF LOT 1 DP 376572

Surveyor: Sam Henry Hartree  
 Firm: Surveying The Bay Ltd (Hastings)  
 Date of Survey: 16/11/2022

Record of Survey  
 DP 585160

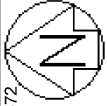
Deposited on: 18/05/2023

S 6/9

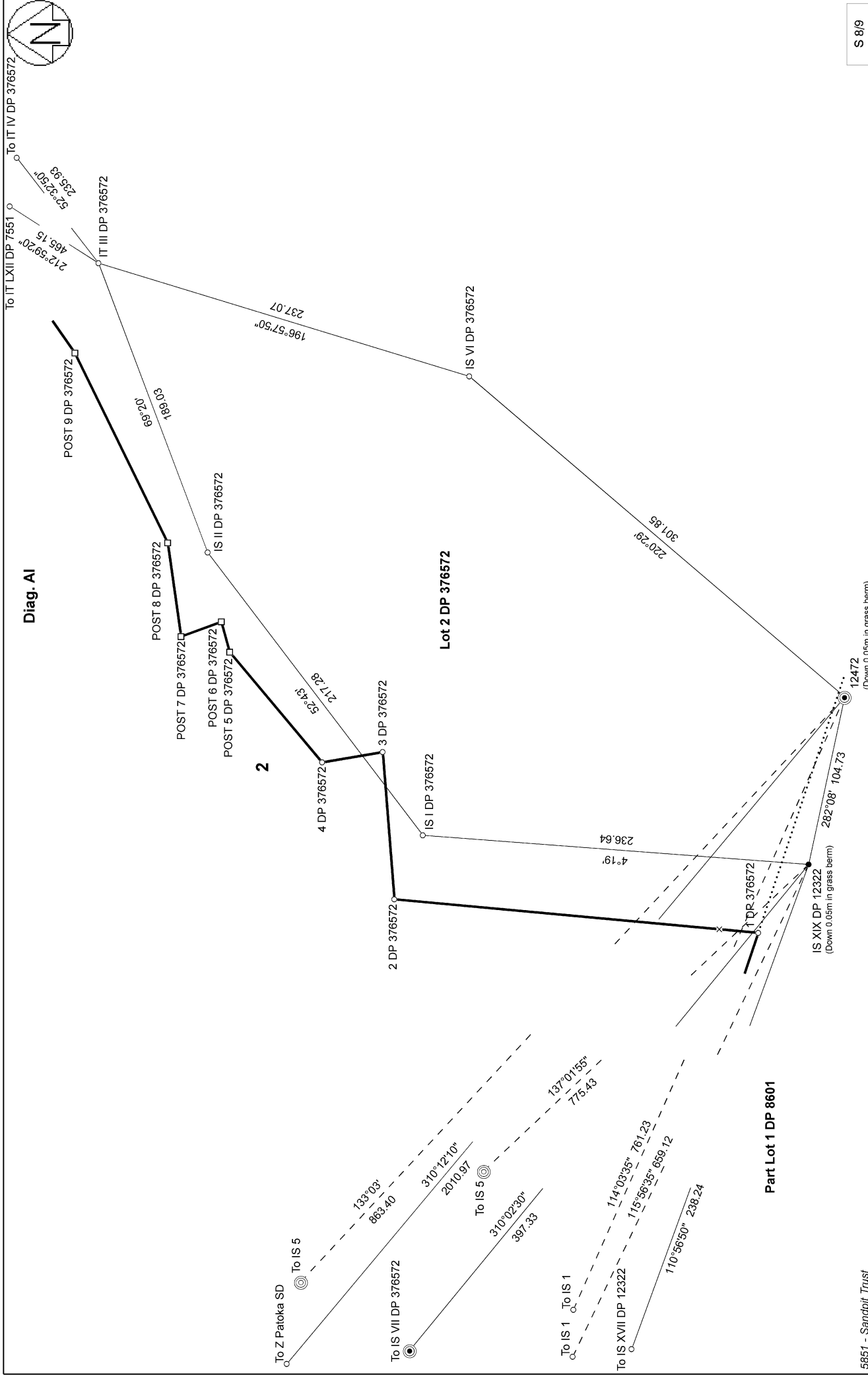


S 7/9

<p>5851 - Sandpitt Trust Land District: Hawkes Bay</p>	<p><b>LOTS 1 AND 2 BEING A SUBDIVISION OF LOT 1 DP 376572</b></p>	<p>Surveyor: Sam Henry Hartree Firm: Surveying The Bay Ltd (Hastings) Date of Survey: 16/11/2022</p>	<p>Record of Survey DP 585160 Deposited on: 18/05/2023</p>
--	---	--	--

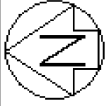


Diag. A1

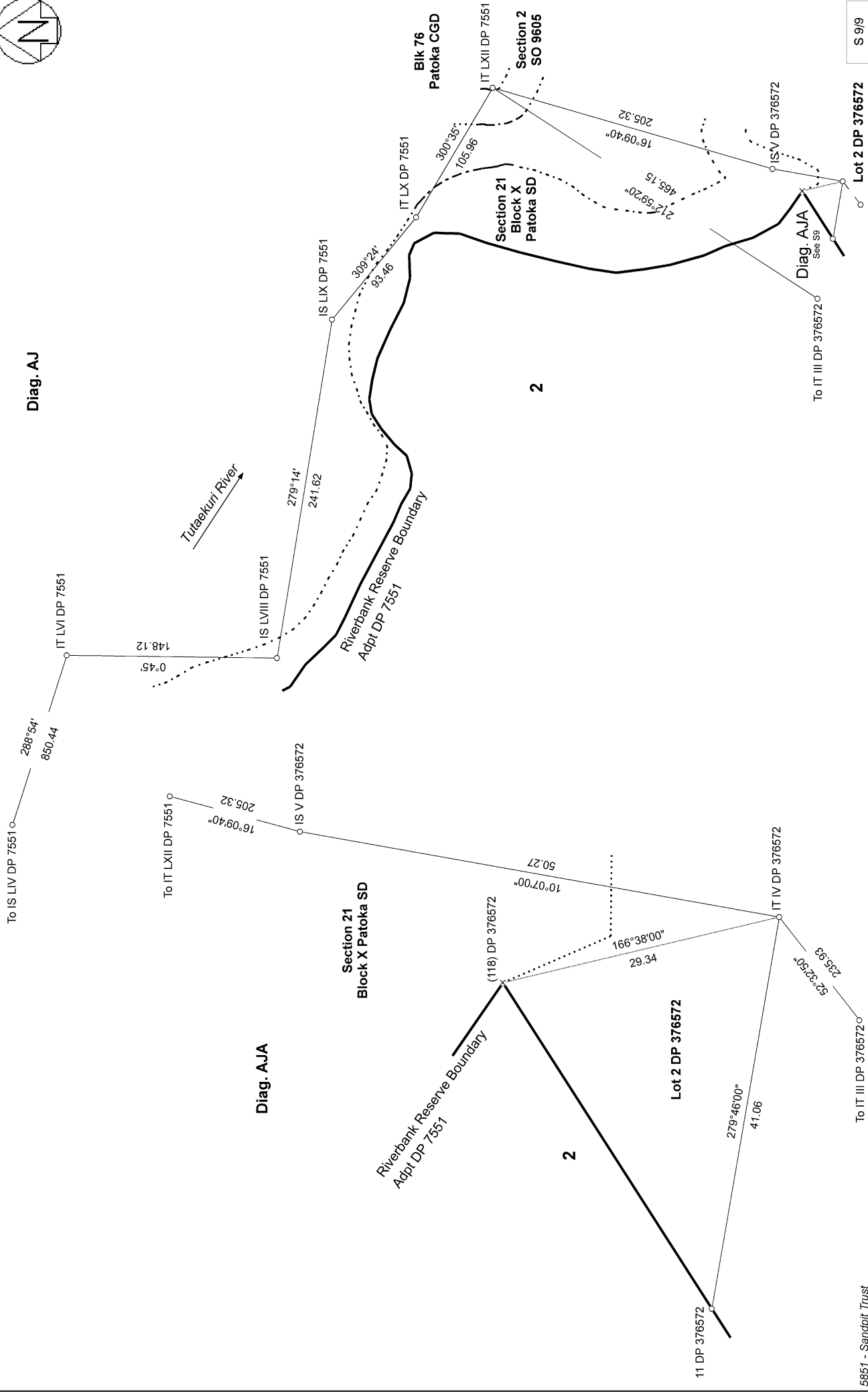


S 8/9

<p>Surveyor: Sam Henry Hartree Firm: Surveying The Bay Ltd (Hastings) Date of Survey: 16/11/2022</p>	<p>Record of Survey DP 585160</p>	<p>Deposited on: 18/05/2023</p>
<p>LOTS 1 AND 2 BEING A SUBDIVISION OF LOT 1 DP 376572</p>		
<p>5851 - Sandpitt Trust Land District: Hawkes Bay</p>	<p>Digitally Generated Plan Generated on: 30/06/2023 1:46pm Page 23 of 34</p>	<p>Part Lot 1 DP 8601</p>



Diag. AJ



S 9/9

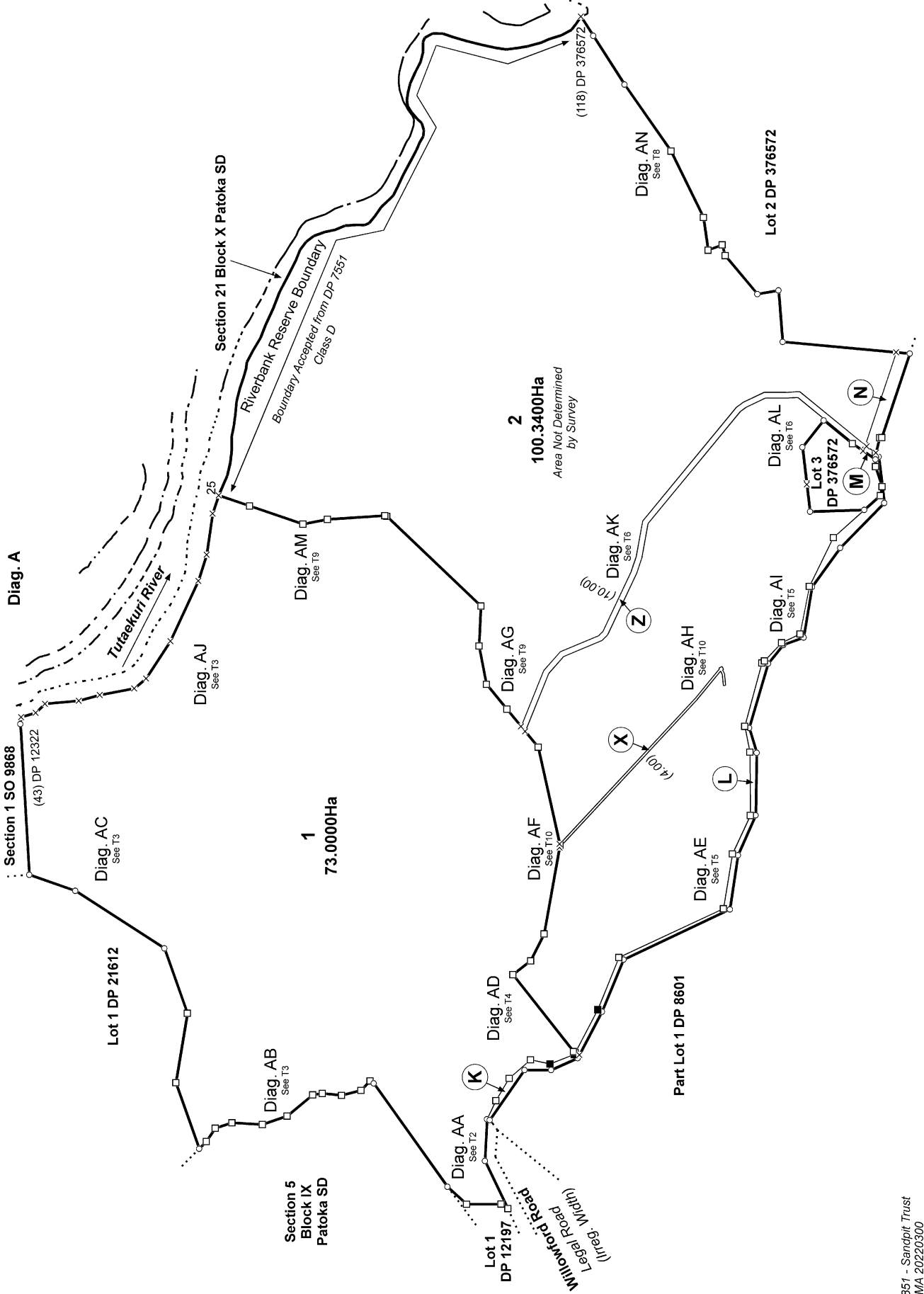
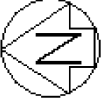
Record of Survey  
DP 585160  
Deposited on: 18/05/2023

Surveyor: Sam Henry Hartree  
Firm: Surveying The Bay Ltd (Hastings)  
Date of Survey: 16/11/2022

LOTS 1 AND 2 BEING A SUBDIVISION OF LOT 1 DP 376572

5851 - Sandpik Trust  
Land District: Hawkes Bay  
Digitally Generated Plan  
Generated on: 30/06/2023 1:46pm Page 24 of 34





5851 - Sandpitt Trust  
RMA 20220300

Land District: Hawkes Bay

**Digitally Generated Plan**  
Generated on: 30/06/2023 1:46pm Page 25 of 34

**LOTS 1 AND 2 BEING A SUBDIVISION OF LOT 1 DP 376572**

Surveyor: Sam Henry Hartree  
Firm: Surveying The Bay Ltd (Hastings)  
Date of Survey: 16/11/2022

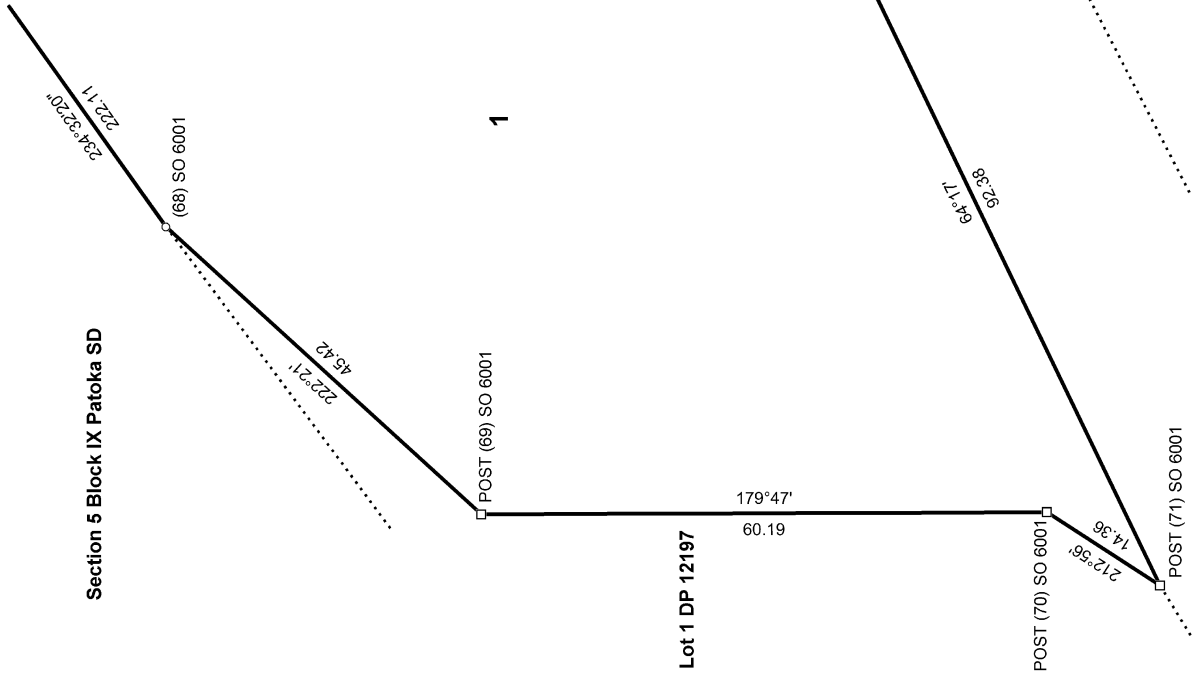
Record of Survey  
DP 585160  
Deposited on: 18/05/2023

T 1/10



Diag. AA

Section 5 Block IX Patoka SD



5851 - Sandpiti Trust  
RMA 20220300

Land District: Hawkes Bay

**Digitally Generated Plan**

Generated on: 30/06/2023 1:46pm Page 26 of 34

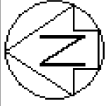
**LOTS 1 AND 2 BEING A SUBDIVISION OF LOT 1 DP 376572**

Surveyor: Sam Henry Hartree  
Firm: Surveying The Bay Ltd (Hastings)  
Date of Survey: 16/11/2022

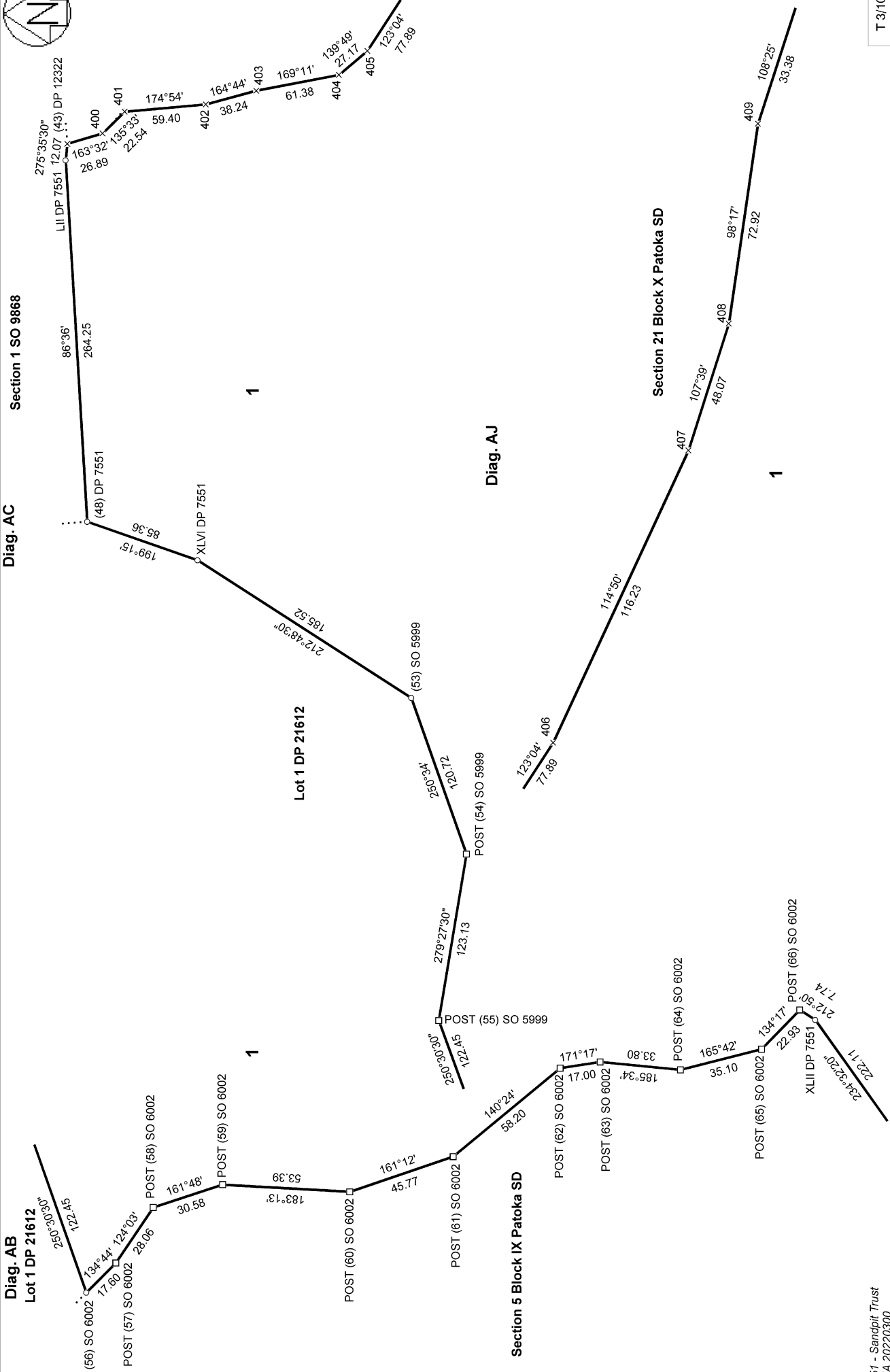
Record of Survey  
DP 585160

Deposited on: 18/05/2023

T 2/10



Section 21 Block X Patoka SD



5851 - Sandpitt Trust  
RMA 20220300

Land District: Hawkes Bay

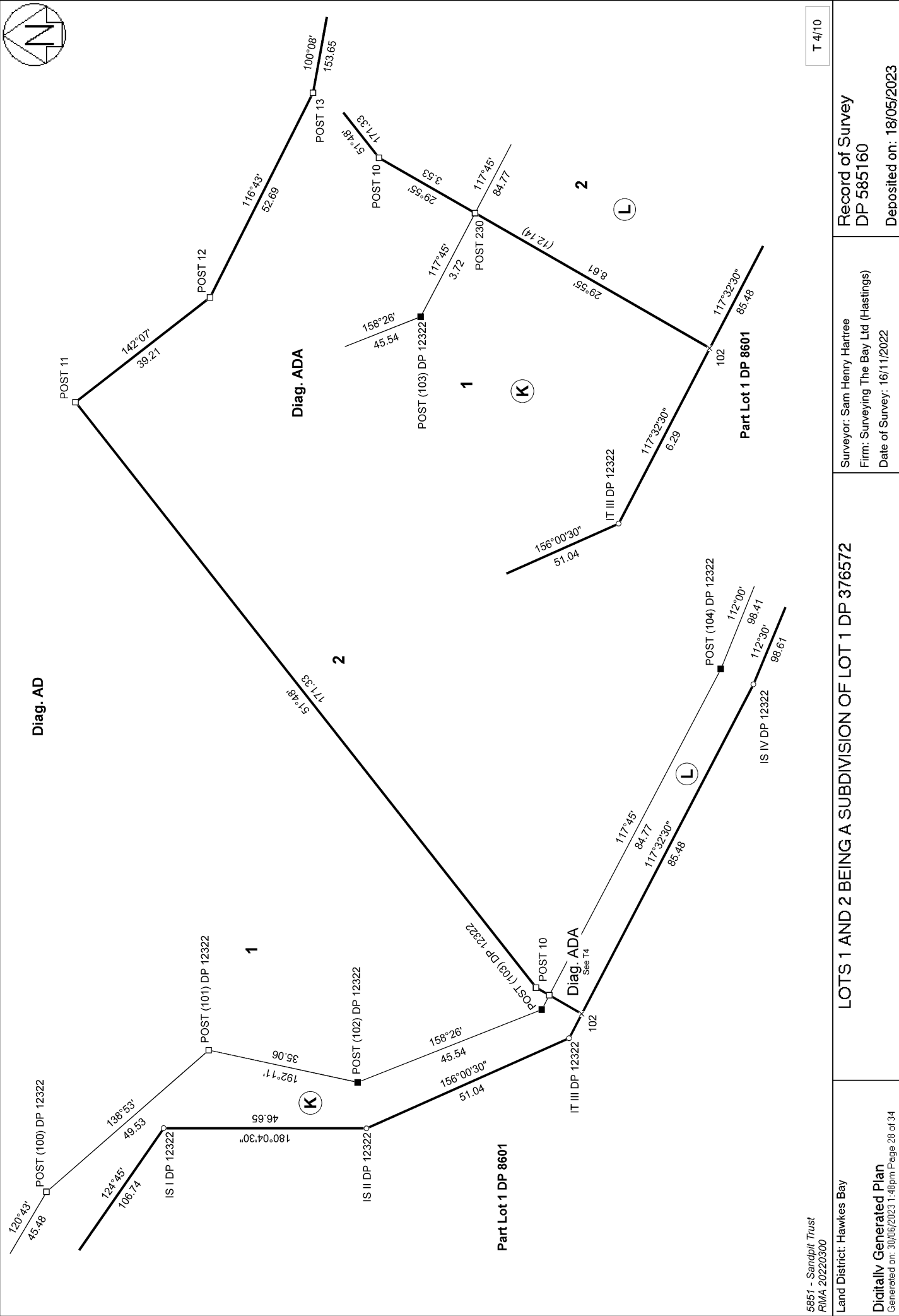
**Digitally Generated Plan**  
Generated on: 30/06/2023 1:46pm Page 27 of 34

LOTS 1 AND 2 BEING A SUBDIVISION OF LOT 1 DP 376572

Surveyor: Sam Henry Hartree  
Firm: Surveying The Bay Ltd (Hastings)  
Date of Survey: 16/11/2022

Record of Survey  
DP 585160  
Deposited on: 18/05/2023

T 3/10



5851 - Sandpitt Trust  
 RMA 20220300

Land District: Hawkes Bay

**Digitally Generated Plan**  
 Generated on: 30/06/2023 1:46pm Page 28 of 34

**LOTS 1 AND 2 BEING A SUBDIVISION OF LOT 1 DP 376572**

Surveyor: Sam Henry Hartree  
 Firm: Surveying The Bay Ltd (Hastings)  
 Date of Survey: 16/11/2022

Record of Survey  
 DP 585160  
 Deposited on: 18/05/2023

T 4/10

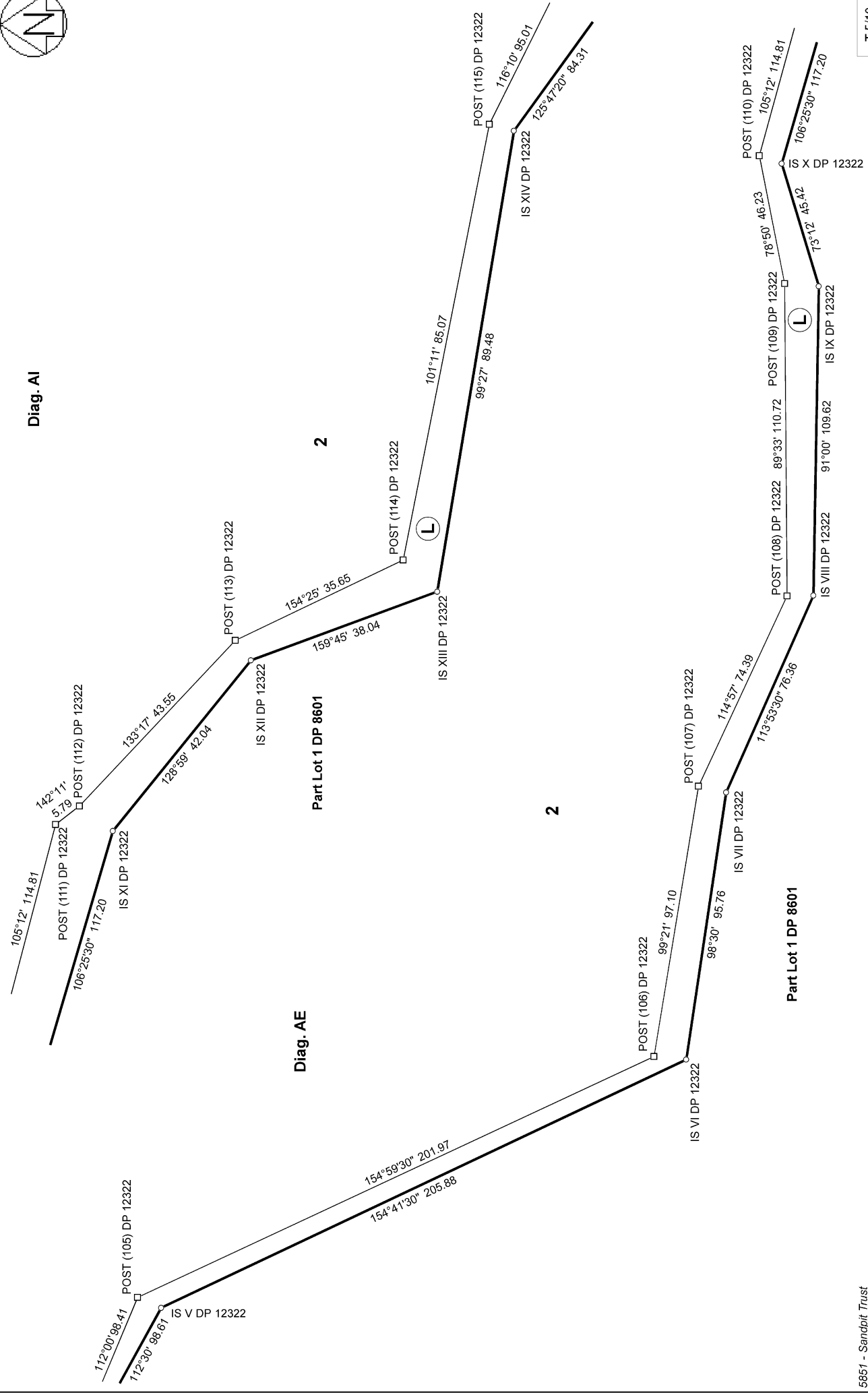


Diag. AI

Diag. AE

Part Lot 1 DP 8601

Part Lot 1 DP 8601



5851 - Sandpiti Trust  
RMA 20220300

Land District: Hawkes Bay

**Digitally Generated Plan**

Generated on: 30/06/2023 1:46pm Page 29 of 34

LOTS 1 AND 2 BEING A SUBDIVISION OF LOT 1 DP 376572

Surveyor: Sam Henry Hartree  
Firm: Surveying The Bay Ltd (Hastings)  
Date of Survey: 16/11/2022

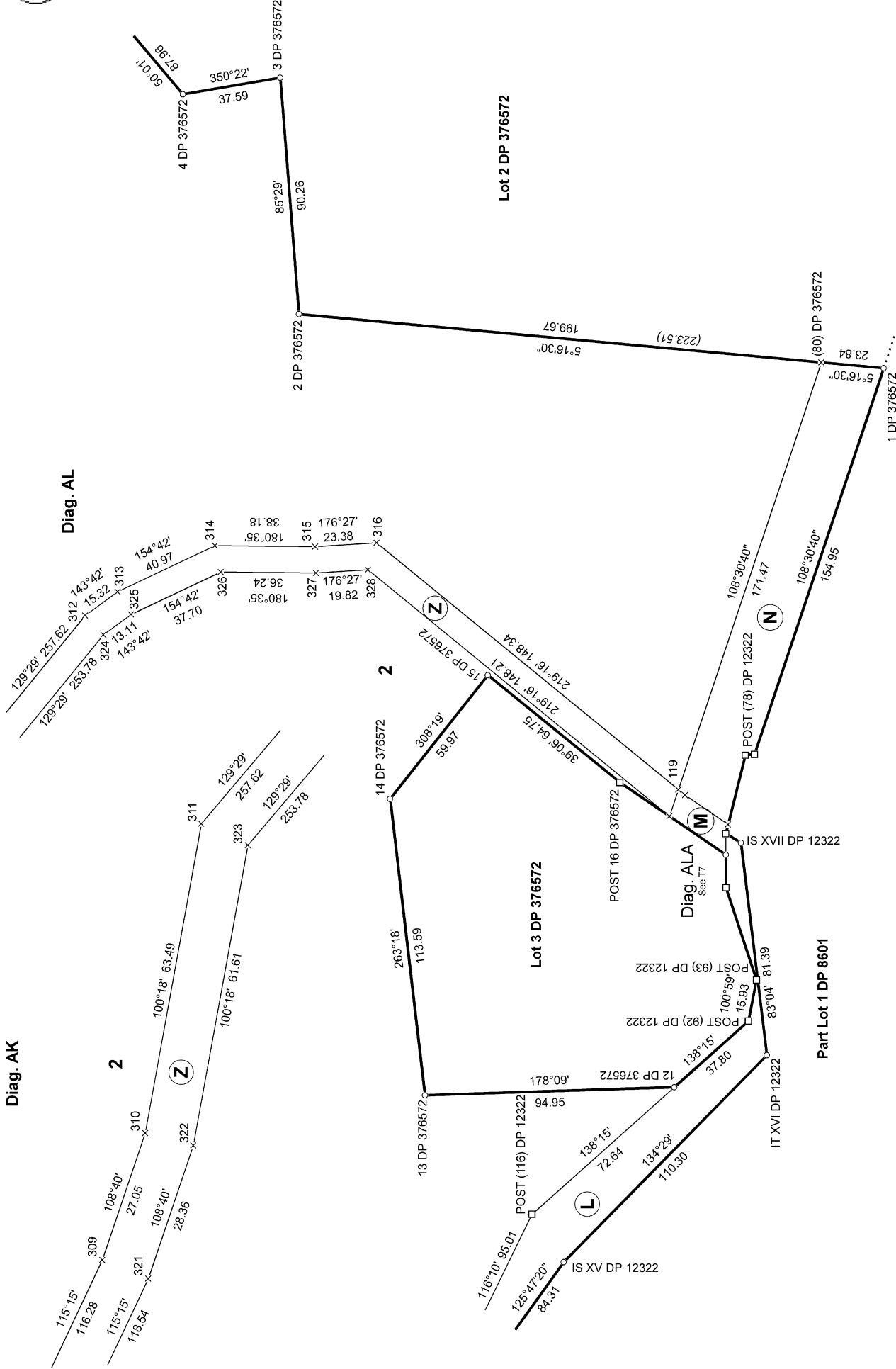
Record of Survey  
DP 585160

Deposited on: 18/05/2023

T 5/10



Diag. AK



Diag. AL

2

2

Lot 2 DP 376572

Lot 3 DP 376572

Part Lot 1 DP 8601

5851 - Sandpitt Trust  
RMA 20220300

Land District: Hawkes Bay

Digitally Generated Plan

Generated on: 30/06/2023 1:46pm Page 30 of 34

LOTS 1 AND 2 BEING A SUBDIVISION OF LOT 1 DP 376572

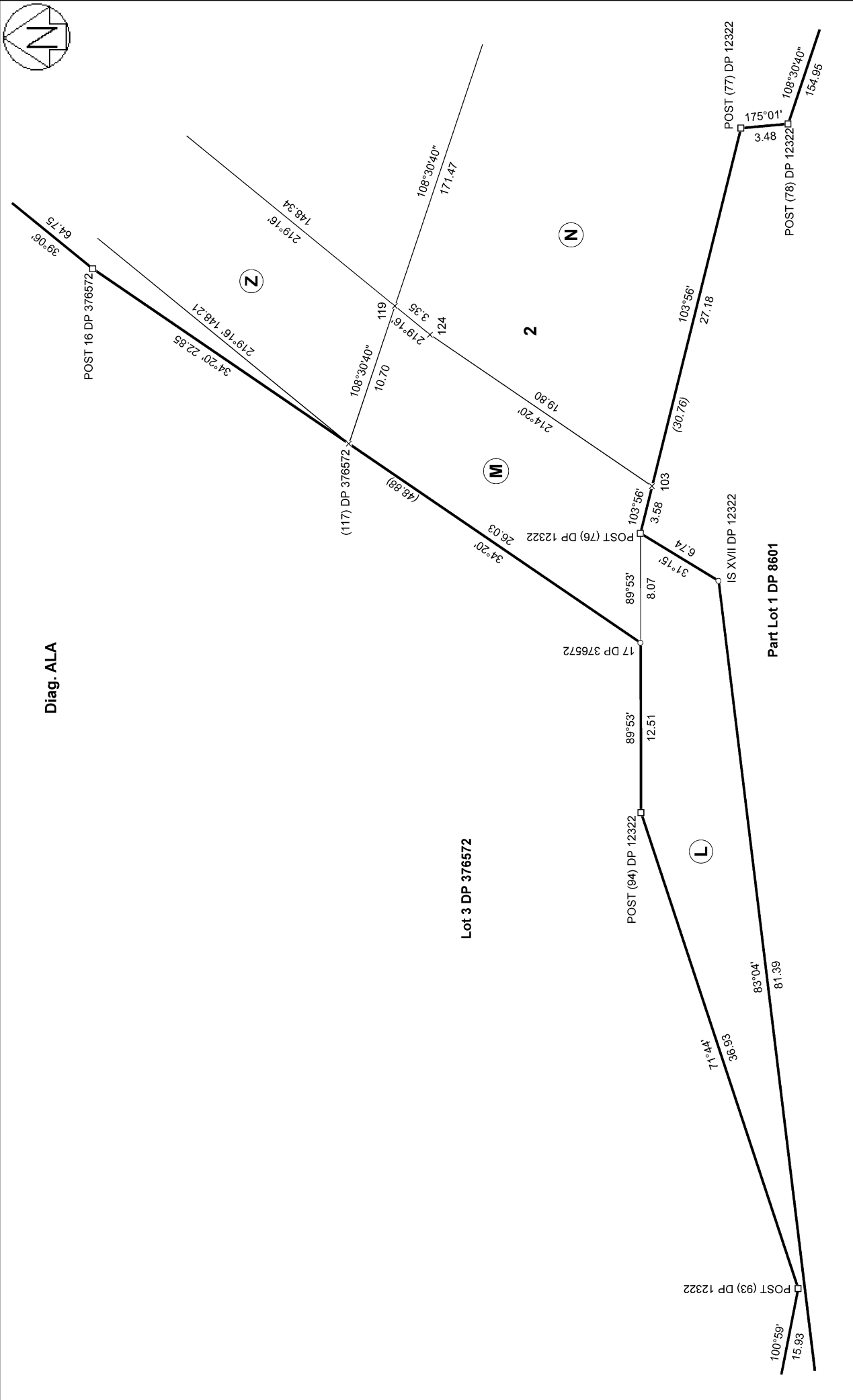
Surveyor: Sam Henry Hartree  
Firm: Surveying The Bay Ltd (Hastings)  
Date of Survey: 16/11/2022

Record of Survey  
DP 585160  
Deposited on: 18/05/2023

T 6/10



Diag. ALA



5851 - Sandpitt Trust  
RMA 20220300

Land District: Hawkes Bay

Digitally Generated Plan  
Generated on: 30/06/2023 1:46pm Page 31 of 34

LOTS 1 AND 2 BEING A SUBDIVISION OF LOT 1 DP 376572

Surveyor: Sam Henry Hartree  
Firm: Surveying The Bay Ltd (Hastings)  
Date of Survey: 16/11/2022

Record of Survey  
DP 585160  
Deposited on: 18/05/2023

T 7/10



Section 21  
Block X  
Patoka SD

(118) DP 376572

Riverbank Reserve Boundary

Diag. AN

57°21'  
40.00'

11 DP 376572

57°21'  
647.10'

10 DP 376572

55°05'  
141.86'

POST 9 DP 376572

Lot 2 DP 376572

2

63°56'30"  
129.24'

POST 8 DP 376572

81°54'  
57.80'

339°52'  
26.23'

POST 6 DP 376572

14°32'  
19.28'

50°11'  
96.18'

POST 7 DP 376572

POST 5 DP 376572

5851 - Sandpitt Trust  
RMA 20220300

Land District: Hawkes Bay

Digitally Generated Plan  
Generated on: 30/06/2023 1:46pm Page 32 of 34

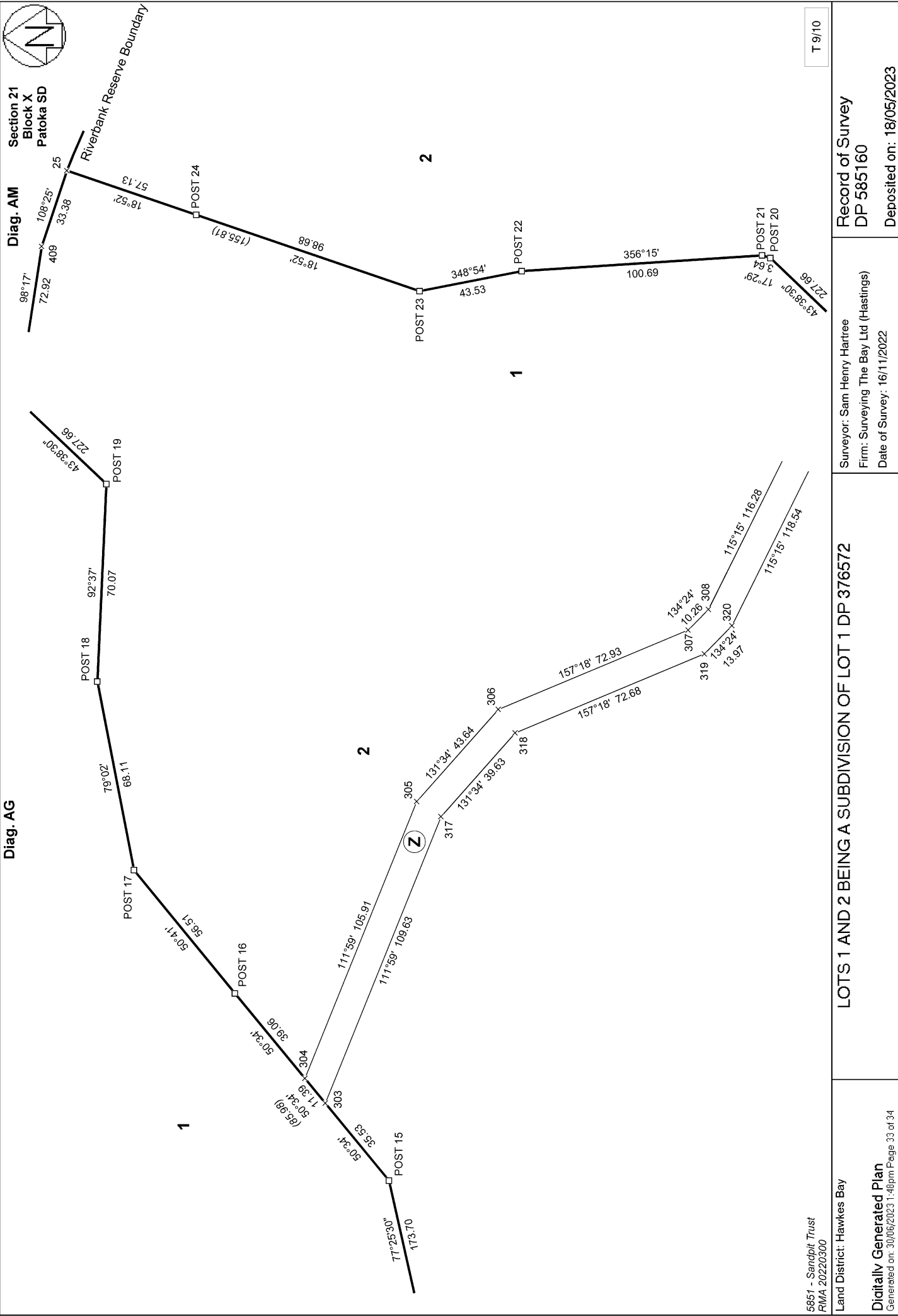
LOTS 1 AND 2 BEING A SUBDIVISION OF LOT 1 DP 376572

Surveyor: Sam Henry Hartree  
Firm: Surveying The Bay Ltd (Hastings)  
Date of Survey: 16/11/2022

Record of Survey  
DP 585160  
Deposited on: 18/05/2023

T 8/10





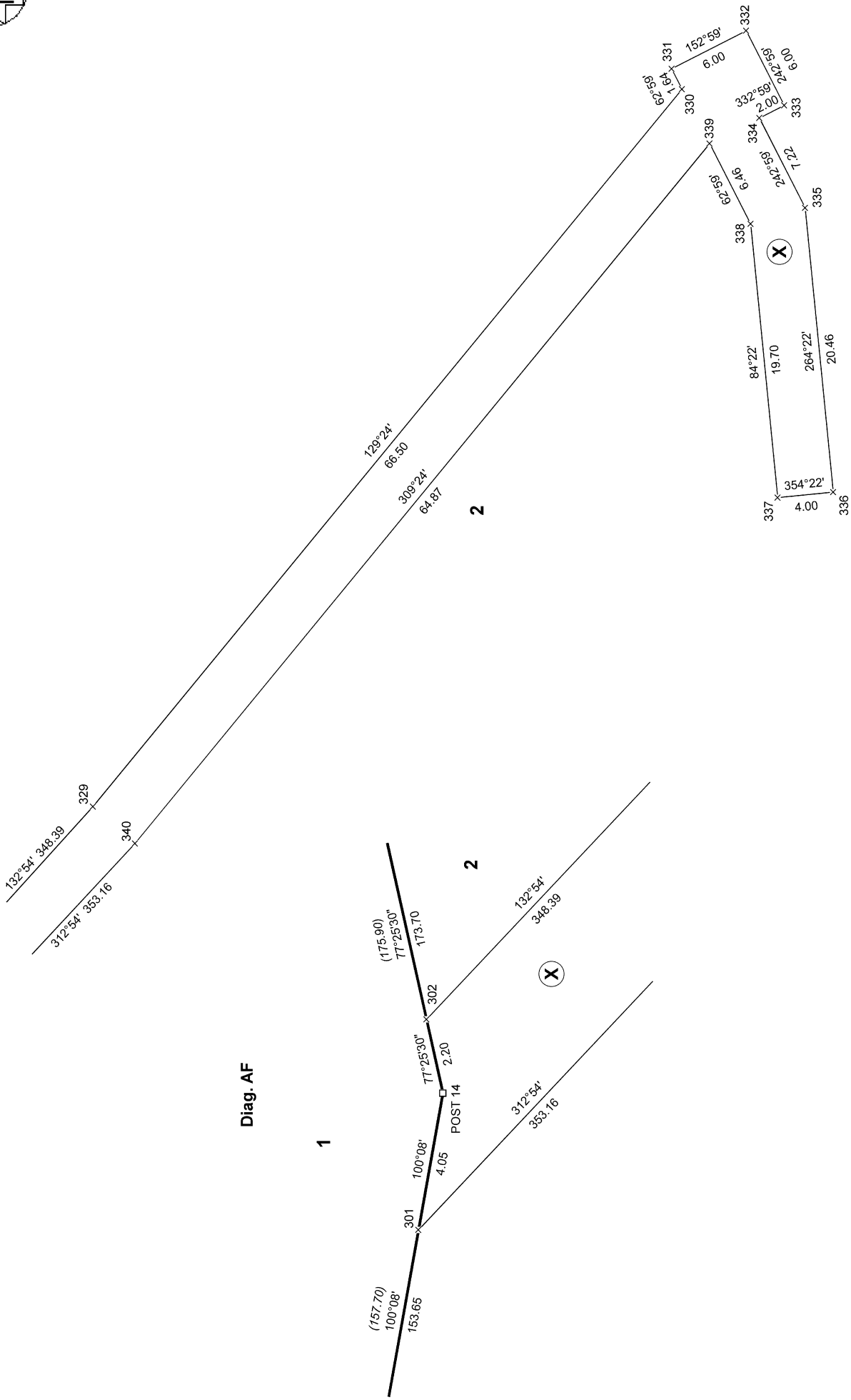
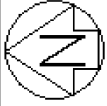
LOTS 1 AND 2 BEING A SUBDIVISION OF LOT 1 DP 376572

Surveyor: Sam Henry Hartree  
Firm: Surveying The Bay Ltd (Hastings)  
Date of Survey: 16/11/2022

Record of Survey  
DP 585160  
Deposited on: 18/05/2023

T 9/10

Diag. AH



5851 - Sandpitt Trust  
 RMA 20220300

Land District: Hawkes Bay

**Digitally Generated Plan**

Generated on: 30/06/2023 1:46pm Page 34 of 34

LOTS 1 AND 2 BEING A SUBDIVISION OF LOT 1 DP 376572

Surveyor: Sam Henry Hartree  
 Firm: Surveying The Bay Ltd (Hastings)  
 Date of Survey: 16/11/2022

Record of Survey  
 DP 585160

Deposited on: 18/05/2023

T 10/10