

# Record of Survey - DP 584668

**Survey Number** DP 584668  
**Surveyor Reference** 6435  
**Surveyor** David Brian Manson  
**Survey Firm** TrueSouth Survey Services Ltd  
**Surveyor Declaration** I David Brian Manson, being a licensed cadastral surveyor, certify that--  
 (a) this dataset provided by me and its related survey are accurate, correct and in accordance with the Cadastral Survey Act 2002 and Cadastral Survey Rules 2021; and  
 (b) the survey was undertaken by me or under my personal direction.  
 Declared on 19 Jan 2023 09:27 AM

## Survey Details

**Dataset Description** Lots 1 and 2 being a subdivision of Part Sections 23, 28, 29 and Closed Road Block II New River Hundred  
**Purpose** LT Subdivision  
**Status** Deposited **Type** Survey  
**Land District** Southland **Survey Class** Class B  
**Meridional Circuit** Bluff 2000 **Vertical Datum** None

## Survey Dates

**Surveyed Date** 18/11/2022 **Certified Date** 19/01/2023  
**Submitted Date** 19/01/2023 09:27:22 **Survey Approval Date** 24/01/2023  
**Deposit Date** 03/02/2023

## Referenced Surveys

Survey Number	Land District	Bearing Correction
DP 4778	Southland	-0°09'30"
SO 7349	Southland	-0°09'25"
SO 1914	Southland	
LT 481668	Southland	0°00'00"
SO 224	Southland	0°00'00"

## Territorial Authorities

Southland District

## Comprised In

RT SLA4/671

## Created Parcels

Parcels	Parcel Intent	Area	RT Reference
Lot 1 Deposited Plan 584668	Fee Simple Title	2.7709 Ha	1100348
Lot 2 Deposited Plan 584668	Fee Simple Title	53.4564 Ha	1100349
<b>Total Area</b>		<b>56.2273 Ha</b>	

# Mark and Vector

Survey Number DP 584668

Meridional Circuit Bluff 2000

From	To	Code	Bearing	Adpt Surv	Bearing Correction	Distance	Adpt Surv	Class
IT 9 SO 4222	IT I DP 4778	ob0	101°00'00" M			419.05 M		
IT I DP 4778	IT VII SO 5726	ob1	87°54'00" M			297.40 M		
IT VII SO 5726	IT I DP 584668	ob4	251°15'10" M			287.29 M		
IT I DP 584668	IT 9 SO 4222	ob6	290°17'25" M			465.38 M		
IT I DP 584668	IT I DP 4778	ob7	342°50'20" M			85.23 M		
IT I DP 584668	IT VI DP 4778	ob8	251°28'00" M			104.86 M		
IT VI DP 4778	IT VII DP 4778	ob13	358°57'30" A	DP 4778	-0°09'30"	42.61 A	DP 4778	
IT VII DP 4778	IS II DP 4778	ob15	19°24'20" A	DP 4778	-0°09'30"	86.48 A	DP 4778	
IS II DP 4778	IT I DP 4778	ob16	101°29'20" A	DP 4778	-0°09'30"	47.29 A	DP 4778	
IS II DP 4778	PEG XIV DP 4778	ob17	201°17'00" A	DP 4778	-0°09'30"	7.77 A	DP 4778	
PEG XIV DP 4778	PEG XII DP 4778	ob18	199°52'30" A	DP 4778	-0°09'30"	98.31 A	DP 4778	Class B
PEG XII DP 4778	IT VII DP 4778	ob20	22°26'30" A	DP 4778	-0°09'30"	19.61 A	DP 4778	
IT I DP 584668	DISK C DP 584668	ob9	135°59'00" M			109.98 M		
IT I DP 4778	IT I SO 7349	ob2	231°22'55" A	SO 7349	-0°09'25"	92.95 A	SO 7349	
IT I SO 7349	IT REF SO 7349	ob23	160°46'55" A	SO 7349	-0°09'25"	492.20 A	SO 7349	
IT REF SO 7349	PEG III SO 7349	ob24	160°46'55" A	SO 7349	-0°09'25"	48.34 A	SO 7349	
PEG III SO 7349	PEG IIIA SO 7349	ob26	14°49'35" A	SO 7349	-0°09'25"	17.24 A	SO 7349	
PEG IIIA SO 7349	UNMK 1 SO 7349	ob27	296°51'35" A	SO 7349	-0°09'25"	37.56 A	SO 7349	Class B
PEG IIIA SO 7349	UNMK 2 SO 7349	ob28	128°34'35" A	SO 7349	-0°09'25"	136.56 A	SO 7349	Class BD
IT VII SO 5726	IT V SO 5726	ob5	89°50'00" M			439.21 M		
IT V SO 5726	IT 9 SO 4222	ob31	273°22'45" M			1,149.76 M		
IT V SO 5726	PEG A LT 481668	ob32	108°12'40" A	LT 481668	0°00'00"	47.69 A	LT 481668	
PEG XIV DP 4778	UNMK A DP 584668	ob19	102°17'30" A	DP 4778	-0°09'30"	32.31 C		Class B
UNMK A DP 584668	PEG B DP 584668	ob35	89°51'30" A	LT 481668	0°00'00"	123.39 C		Class B
PEG B DP 584668	PEG (1) SO 1914	ob38	89°51'30" A	LT 481668	0°00'00"	655.79 C		Class B
PEG (1) SO 1914	PEG A LT 481668	ob36	89°51'30" A	LT 481668	0°00'00"	20.12 A	SO 1914	
PEG B DP 584668	DISK C DP 584668	ob39	181°33'00" C			156.18 C		Class B
PEG (1) SO 1914	PEG (2) SO 1914	ob37	179°51'30" A	LT 481668	0°00'00"	274.61 A	SO 1914	Class B
PEG (2) SO 1914	UNMK SO 1914	ob40	179°51'30" A	LT 481668	0°00'00"	746.53 A	LT 481668	Class BD
DISK C DP 584668	POST D DP 584668	ob22	270°53'40" C			160.03 C		Class B

# Mark and Vector

Survey Number DP 584668

Meridional Circuit Bluff 2000

From	To	Code	Bearing	Adpt Surv	Bearing Correction	Distance	Adpt Surv	Class
POST D DP 584668	IT 1 DP 584668	ob41	47°30'00"	M		113.37 M		
IT 1 DP 584668	POST E DP 584668	ob10	229°15'30"	M		117.07 M		
POST D DP 584668	POST E DP 584668	ob42	272°05'00"	C		5.12 C		Class B
PEG XII DP 4778	POST G DP 584668	ob21	205°31'30"	A DP 4778	-0°09'30"	22.72 C		Class B
POST G DP 584668	IT VI DP 4778	ob33	102°25'00"	M		18.49 M		
POST G DP 584668	UNMK DP 4778	ob34	205°31'30"	A DP 4778	-0°09'30"	1.82 C		Class B
UNMK DP 4778	IT VI DP 4778	ob44	97°04'00"	C		18.99 C		
IT VI DP 4778	PEG F DP 584668	ob14	198°48'00"	M		29.43 M		
POST E DP 584668	PEG F DP 584668	ob43	306°58'00"	C		25.31 C		Class B
PEG F DP 584668	POST G DP 584668	ob46	344°56'00"	C		32.97 C		Class B
UNMK 1 SO 7349	IT REF SO 7349	ob29	47°40'00"	C		17.83 C		
IT 1 DP 584668	PEG B DP 584668	ob11	46°18'40"	M		111.53 M		
IT I DP 4778	UNMK A DP 584668	ob3	255°02'00"	C		18.20 C		
IT REF SO 7349	UNMK H DP 584668	ob25	119°23'50"	C		553.72 C		
IT 1 DP 584668	UNMK 100 DP 584668	ob12	187°28'50"	C		408.92 C		
UNMK 100 DP 584668	IT REF SO 7349	ob47	107°00'00"	C		122.84 C		
UNMK 1 SO 7349	UNMK J DP 584668	ob30	223°12'00"	C		14.16 C		Class BD
UNMK DP 4778	UNMK K DP 584668	ob45	260°46'00"	C		32.05 C		Class BD

Mark Name	Mark Condition	Description
IT 1 DP 584668		dn 0.4 in grass
IT 9 SO 4222		dn 0.3 in grass berm
IT I DP 4778		dn 0.1 in gravel shoulder
IT V SO 5726		dn 0.1 in gravel shoulder
IT VII SO 5726		dn 0.1 in gravel shoulder

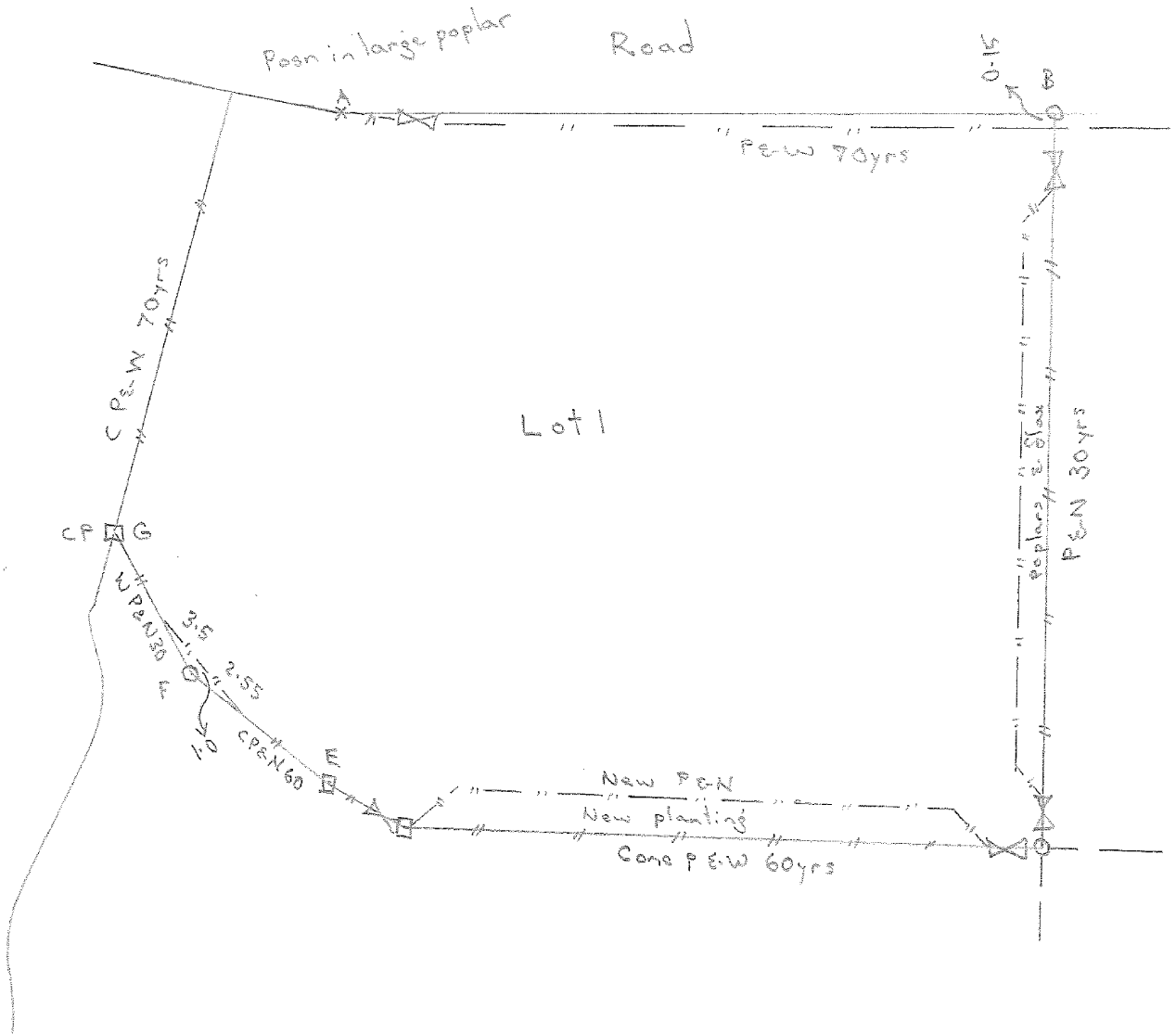
\*\*\* End of Report \*\*\*

Occupation Diagram



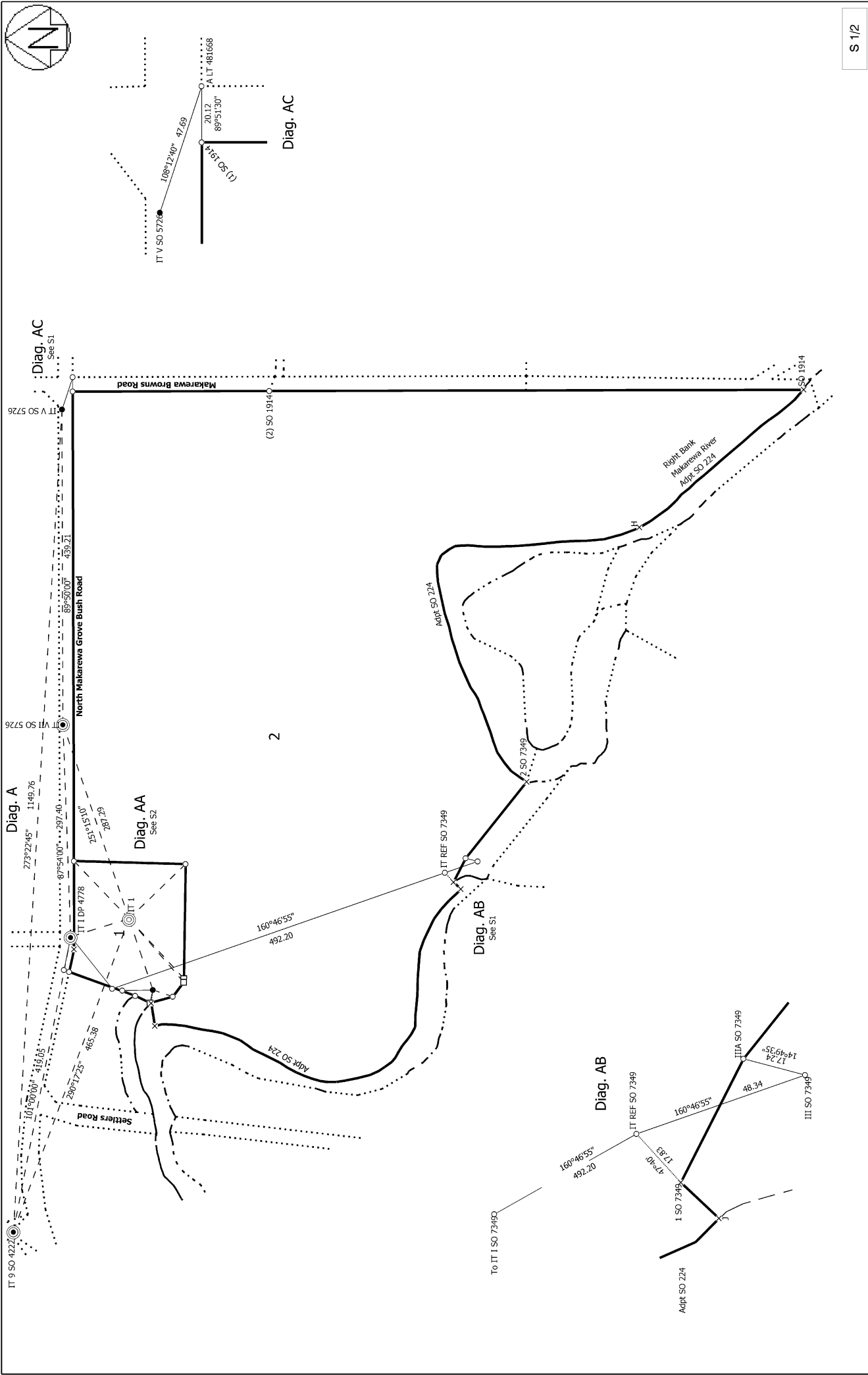
FB NO.		JOB NO.	
SURVEYOR'S PAGE	SURVEYOR	DATE	# 6435
1	<i>[Signature]</i>	4 Nov 22	PLAN NO. 584668

Occupation

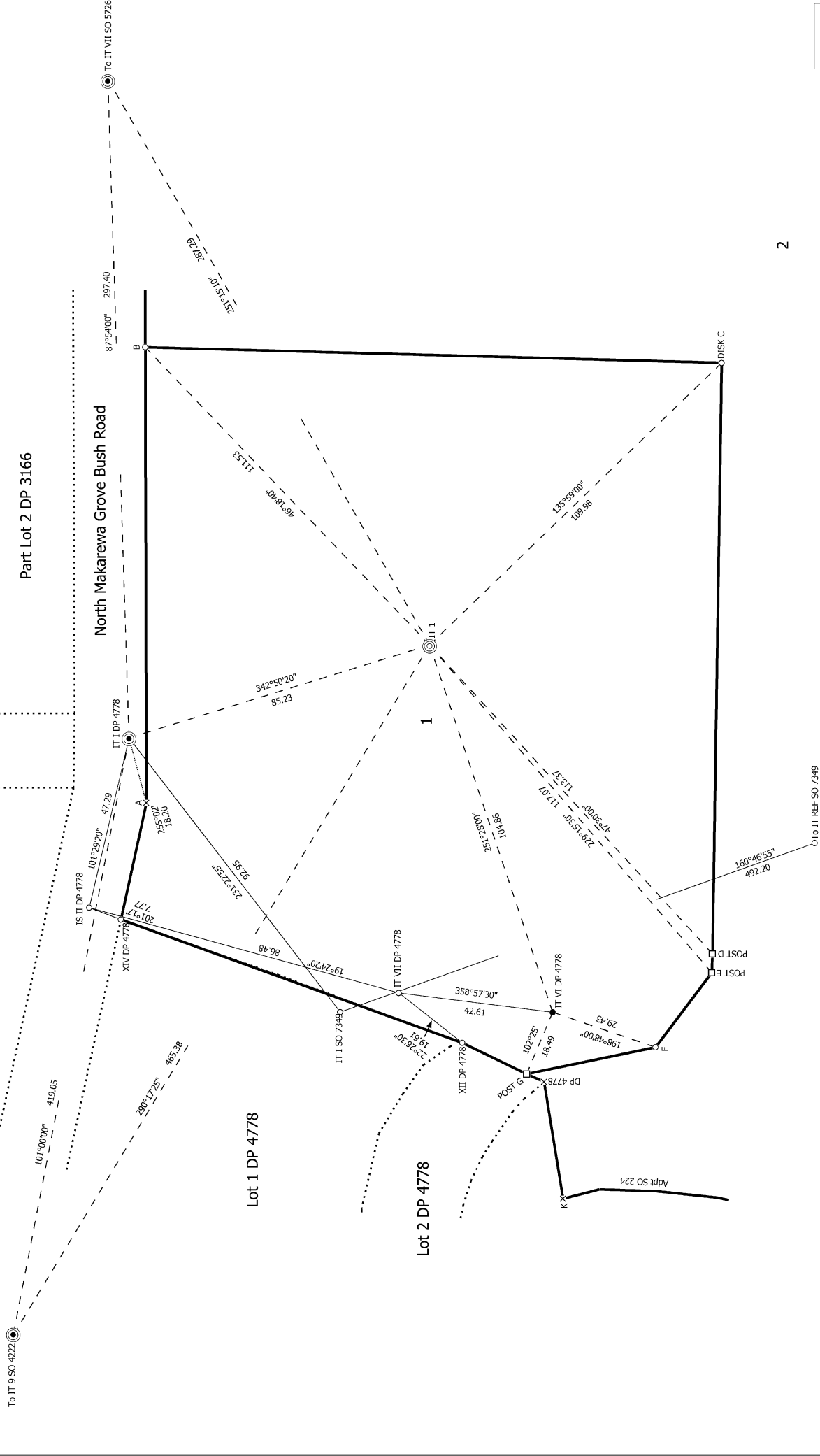


OFFICE  
PAGE

09 218 5566 www.bdstl.com/nz



<p>Land District: Southland  <b>Digitally Generated Plan</b>          Generated on: 22/02/2023 2:55pm Page 5 of 7</p>	<p><b>Lots 1 and 2 being a subdivision of Part Sections 23, 28, 29 and Closed Road Block II New River Hundred</b></p>	<p>Surveyor: David Brian Manson          Firm: TrueSouth Survey Services Ltd          Date of Survey: 18/11/2022</p>	<p>Record of Survey          DP 584668          Deposited on: 3/02/2023</p>
---	---	--	---



<p>Land District: Southland</p> <p><b>Digitally Generated Plan</b></p> <p>Generated on: 22/02/2023 2:55pm Page 6 of 7</p>	<p><b>Lots 1 and 2 being a subdivision of Part Sections 23, 28, 29 and Closed Road Block II New River Hundred</b></p>	<p>Surveyor: David Brian Manson          Firm: TrueSouth Survey Services Ltd          Date of Survey: 18/11/2022</p>	<p>Record of Survey          DP 584668          Deposited on: 3/02/2023</p>
---	---	--	---

