



Record of Survey - DP 583913

Survey Number DP 583913
Surveyor Reference 21B07 - 59 Man King xing RD
Surveyor Donald Ralph Moir
Survey Firm Ralph Moir & Associates
Surveyor Declaration I Donald Ralph Moir, being a licensed cadastral surveyor, certify that--
(a) this dataset provided by me and its related survey are accurate, correct and in accordance with the Cadastral Survey Act 2002 and Cadastral Survey Rules 2021; and
(b) the survey was undertaken by me or under my personal direction.
Declared on 21 Feb 2023 02:28 PM

Survey Details

Dataset Description Lots 1 & 2 beings a subdivision of Lot 2 DP 549590
Purpose LT Subdivision
Status Deposited
Land District Southland
Meridional Circuit Bluff 2000

Type	Survey
Survey Class	Class B
Vertical Datum	None

Survey Dates

Surveyed Date	19/10/2022	Certified Date	21/02/2023
Submitted Date	21/02/2023 14:28:28	Survey Approval Date	01/03/2023
Deposit Date	18/08/2023		

Referenced Surveys

Survey Number	Land District	Bearing Correction
DP 518	Southland	-0°06'20"
SO 5474	Southland	-0°06'20"
DP 12070	Southland	0°00'00"
DP 549590	Southland	0°00'00"

Territorial Authorities

Southland District

Comprised In

RT 945573

Created Parcels

Parcels	Parcel Intent	Area	RT Reference
Lot 1 Deposited Plan 583913	Fee Simple Title	5.5201 Ha	1096928
Lot 2 Deposited Plan 583913	Fee Simple Title	110.0244 Ha	1096929
Total Area		115.5445 Ha	

Mark and Vector

Survey Number DP 583913

Meridional Circuit Bluff 2000

From	To	Code	Bearing	Adpt Surv	Bearing Correction	Distance	Adpt Surv	Class
Y NO 2	IT I DP 549590	ob0	132°53'05" M			747.30 M		
IT I DP 549590	IS 1 DP 583913	ob6	305°55'10" M			617.78 M		
IS 1 DP 583913	IS 2 DP 583913	ob8	297°12'35" M			184.54 M		
IS 2 DP 583913	IT II DP 12070	ob22	342°54'20" M			413.84 M		
IT II DP 12070	Y NO 2	ob34	144°27'20" M			410.25 M		
Y NO 2	IS 2 DP 583913	ob1	242°09'00" M			132.18 M		
Y NO 2	IS 1 DP 583913	ob2	162°04'50" M			153.58 M		
Y NO 2	IT b SO 5474	ob3	233°21'00" M			11.60 M		
Y NO 2	PEG N DP 549590	ob4	157°26'40" M			116.29 M		
IT I DP 549590	POST A DP 549590	ob7	343°56'00" M			182.63 M		
IT b SO 5474	PEG X DP 583913	ob35	151°46'40" A	DP 549590	0°00'00"	12.02 C		Class B
PEG X DP 583913	PEG N DP 549590	ob39	151°46'40" A	DP 549590	0°00'00"	102.00 C		Class B
PEG N DP 549590	DISK Y DP 583913	ob37	116°30'40" A	DP 549590	0°00'00"	272.76 C		Class B
DISK Y DP 583913	POST A DP 549590	ob40	116°30'40" A	DP 549590	0°00'00"	232.80 C		Class B
DISK Y DP 583913	POST A DP 583913	ob41	252°34'00" C			8.78 C		Class B
POST A DP 583913	POST B DP 583913	ob42	260°31'00" C			5.28 C		Class B
POST B DP 583913	POST C DP 583913	ob43	266°51'00" C			5.23 C		Class B
POST C DP 583913	POST D DP 583913	ob44	275°56'00" C			5.60 C		Class B
POST D DP 583913	POST E DP 583913	ob45	285°29'00" C			5.64 C		Class B
POST E DP 583913	POST F DP 583913	ob46	296°35'00" C			5.25 C		Class B
POST F DP 583913	POST G DP 583913	ob47	312°10'00" C			4.99 C		Class B
POST G DP 583913	PEG H DP 583913	ob48	323°18'00" C			7.71 C		Class B
PEG H DP 583913	PEG I DP 583913	ob49	296°30'20" C			150.19 C		Class B
PEG I DP 583913	POST J DP 583913	ob50	276°56'30" C			28.57 C		Class B
POST J DP 583913	POST K DP 583913	ob51	275°15'00" C			25.88 C		Class B
POST K DP 583913	POST L DP 583913	ob52	272°41'00" C			20.13 C		Class B
POST L DP 583913	POST M DP 583913	ob53	268°03'30" C			31.59 C		Class B

Mark and Vector

Survey Number DP 583913

Meridional Circuit Bluff 2000

From	To	Code	Bearing	Adpt Surv	Bearing Correction	Distance	Adpt Surv	Class
POST M DP 583913	POST N DP 583913	ob54	262°42'00"	C		29.00 C		Class B
POST N DP 583913	POST O DP 583913	ob55	243°48'00"	C		5.07 C		Class B
POST O DP 583913	POST P DP 583913	ob56	237°50'00"	C		5.06 C		Class B
POST P DP 583913	POST Q DP 583913	ob57	228°54'00"	C		4.63 C		Class B
POST Q DP 583913	POST R DP 583913	ob58	201°49'00"	C		21.50 C		Class B
POST R DP 583913	POST S DP 583913	ob59	200°15'15"	C		172.26 C		Class B
POST S DP 583913	PEG T DP 583913	ob60	309°28'55"	C		215.36 C		Class B
PEG T DP 583913	POST U DP 583913	ob61	305°04'50"	C		50.68 C		Class B
POST U DP 583913	POST V DP 583913	ob62	84°12'40"	C		31.33 C		Class B
POST V DP 583913	POST W DP 583913	ob63	45°14'05"	C		103.08 C		Class B
POST W DP 583913	PEG X DP 583913	ob64	68°25'50"	C		218.03 C		Class B
IT b SO 5474	PEG O DP 549590	ob36	331°46'40"	A SO 5474	-0°06'20"	110.85 A DP 549590		Class B
PEG O DP 549590	PEG (3) DP 518	ob65	319°00'40"	A DP 12070	0°00'00"	288.33 A DP 549590		Class B
PEG (3) DP 518	PEG a SO 5474	ob66	210°48'40"	A DP 12070	0°00'00"	94.31 A DP 12070		Class B
PEG a SO 5474	PEG (2) DP 518	ob67	210°48'40"	A DP 12070	0°00'00"	982.58 A DP 12070		Class B
PEG (2) DP 518	PEG (1) DP 518	ob68	129°47'10"	A DP 518	-0°06'20"	537.12 A DP 518		Class BD
POST A DP 549590	POST B DP 549590	ob38	184°17'40"	A DP 549590	0°00'00"	59.10 A DP 549590		Class B
POST B DP 549590	POST C DP 549590	ob69	185°05'40"	A DP 549590	0°00'00"	67.48 A DP 549590		Class B
POST C DP 549590	PEG D DP 549590	ob70	186°54'00"	A DP 549590	0°00'00"	31.51 A DP 549590		Class B
PEG D DP 549590	PEG E DP 549590	ob71	97°40'00"	A DP 549590	0°00'00"	35.29 A DP 549590		Class B
PEG E DP 549590	UNMK F DP 549590	ob72	119°10'40"	A DP 549590	0°00'00"	84.73 A DP 549590		Class B
UNMK F DP 549590	PEG G DP 549590	ob73	23°51'40"	A DP 549590	0°00'00"	2.00 A DP 549590		Class B
PEG G DP 549590	PEG H DP 549590	ob74	23°51'40"	A DP 549590	0°00'00"	137.91 A DP 549590		Class B
PEG H DP 549590	PEG M DP 549590	ob75	116°30'40"	A DP 549590	0°00'00"	148.56 A DP 549590		Class B
PEG M DP 549590	PEG (1) SO 5474	ob76	136°36'40"	A SO 5474	-0°06'20"	64.23 A SO 5474		Class B

Mark and Vector

Survey Number DP 583913

Meridional Circuit Bluff 2000

From	To	Code	Bearing	Adpt Surv	Bearing Correction	Distance	Adpt Surv	Class
PEG (1) SO 5474	PEG (4) SO 5474	ob77	147°07'40"	A SO 5474	-0°06'20"	48.72 A	SO 5474	Class B
PEG (4) SO 5474	PEG (2) SO 5474	ob78	162°23'10"	A SO 5474	-0°06'20"	420.90 A	SO 5474	Class B
PEG (2) SO 5474	PEG (3) SO 5474	ob79	160°18'40"	A SO 5474	-0°06'20"	18.91 A	SO 5474	Class B
PEG (3) SO 5474	UNMK SO 5474	ob80	277°39'40"	A SO 5474	-0°06'20"	47.15 A	SO 5474	Class B
UNMK SO 5474	PEG (13) DP 518	ob81	180°36'40"	A SO 5474	-0°06'20"	21.22 A	SO 5474	Class BD
Y NO 2	PEG X DP 583913	ob5	191°41'00"	M		17.89 M		
IS 2 DP 583913	POST W DP 583913	ob23	248°08'40"	M		96.47 M		
IS 2 DP 583913	POST V DP 583913	ob24	236°18'20"	M		195.58 M		
IS 2 DP 583913	POST U DP 583913	ob25	240°03'40"	M		223.75 M		
IS 2 DP 583913	PEG T DP 583913	ob26	227°16'10"	M		207.49 M		
IS 2 DP 583913	POST S DP 583913	ob27	177°09'20"	M		278.07 M		
IS 2 DP 583913	POST R DP 583913	ob28	147°41'20"	M		137.39 M		
IS 2 DP 583913	POST Q DP 583913	ob29	139°44'20"	M		126.00 M		
IS 2 DP 583913	POST P DP 583913	ob30	137°38'00"	M		126.02 M		
IS 2 DP 583913	POST O DP 583913	ob31	135°23'20"	M		127.01 M		
IS 2 DP 583913	POST N DP 583913	ob32	133°14'40"	M		128.70 M		
IS 2 DP 583913	POST M DP 583913	ob33	124°35'40"	M		148.83 M		
IS 1 DP 583913	POST L DP 583913	ob9	275°27'00"	M		10.08 M		
IS 1 DP 583913	POST K DP 583913	ob10	89°55'00"	M		10.08 M		
IS 1 DP 583913	POST J DP 583913	ob11	93°45'00"	M		35.93 M		
IS 1 DP 583913	PEG I DP 583913	ob12	95°10'00"	M		64.47 M		
IS 1 DP 583913	PEG H DP 583913	ob13	110°08'20"	M		211.55 M		
IS 1 DP 583913	POST G DP 583913	ob14	111°14'50"	M		218.04 M		
IS 1 DP 583913	POST F DP 583913	ob15	111°42'20"	M		222.71 M		
IS 1 DP 583913	POST E DP 583913	ob16	111°49'00"	M		227.94 M		
IS 1 DP 583913	POST D DP 583913	ob17	111°39'50"	M		233.55 M		

Mark and Vector

Survey Number DP 583913

Meridional Circuit Bluff 2000

From	To	Code	Bearing	Adpt Surv	Bearing Correction	Distance	Adpt Surv	Class
IS 1 DP 583913	POST C DP 583913	ob18	111°18'00" M			238.94 M		
IS 1 DP 583913	POST B DP 583913	ob19	110°47'30" M			243.71 M		
IS 1 DP 583913	POST A DP 583913	ob20	110°10'40" M			248.29 M		
IS 1 DP 583913	DISK Y DP 583913	ob21	108°58'30" M			255.30 M		

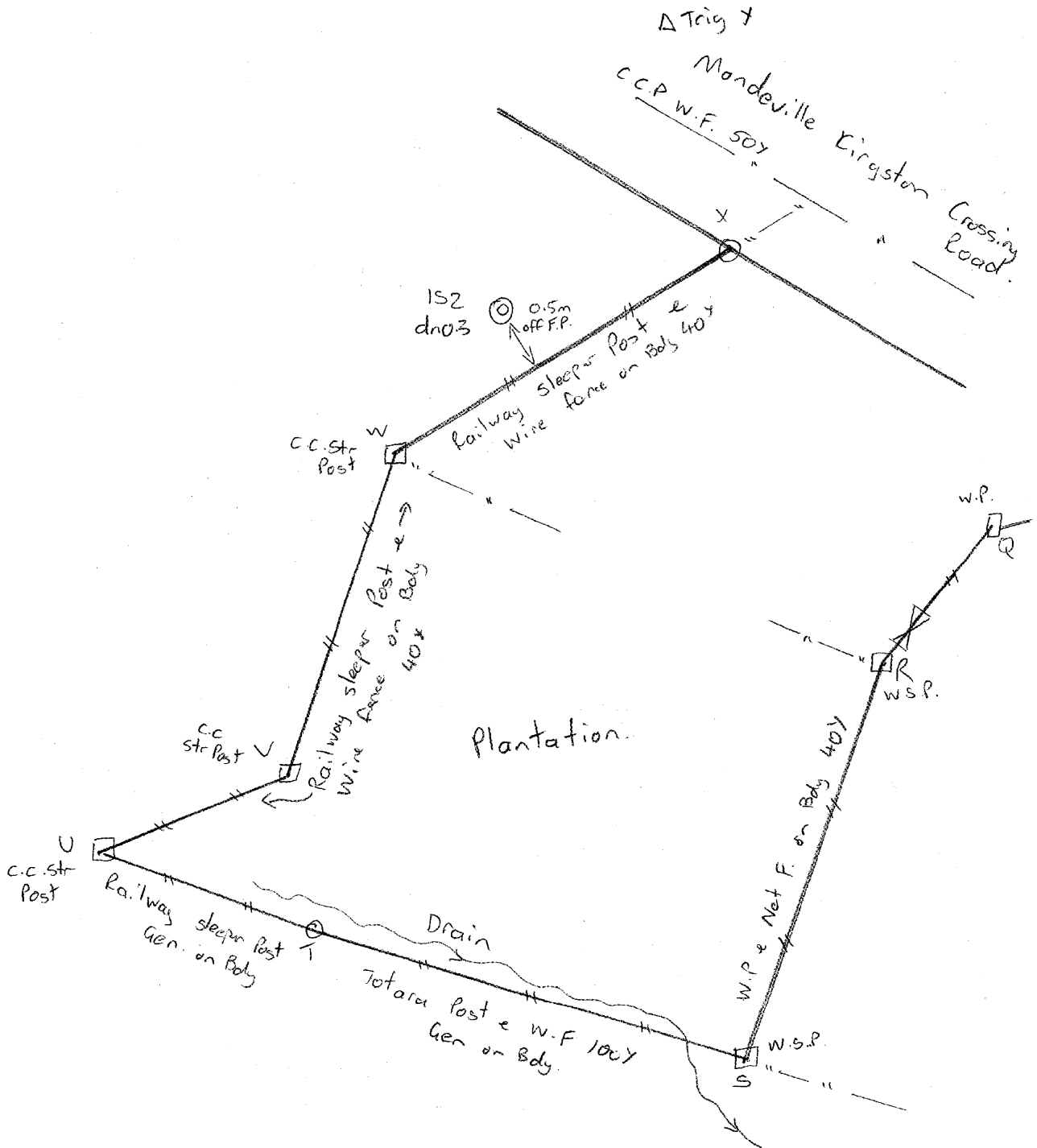
Mark Name	Mark Condition	Description
DISK Y DP 583913		in post stay
IS 1 DP 583913		dn 0.3
IS 2 DP 583913		dn 0.3
IT b SO 5474		top bent, base OK
POST A DP 583913		wooden post
POST B DP 583913		wooden post
POST C DP 583913		wooden post
POST D DP 583913		wooden post
POST E DP 583913		wooden post
POST F DP 583913		wooden post
POST G DP 583913		wooden post
POST J DP 583913		wooden post
POST K DP 583913		wooden post
POST L DP 583913		wooden post
POST M DP 583913		wooden post
POST N DP 583913		wooden post
POST O DP 583913		wooden post
POST P DP 583913		wooden post
POST Q DP 583913		wooden post
POST R DP 583913		wooden post
POST S DP 583913		wooden post
POST U DP 583913		concrete post
POST V DP 583913		concrete post
POST W DP 583913		concrete post

*** End of Report ***



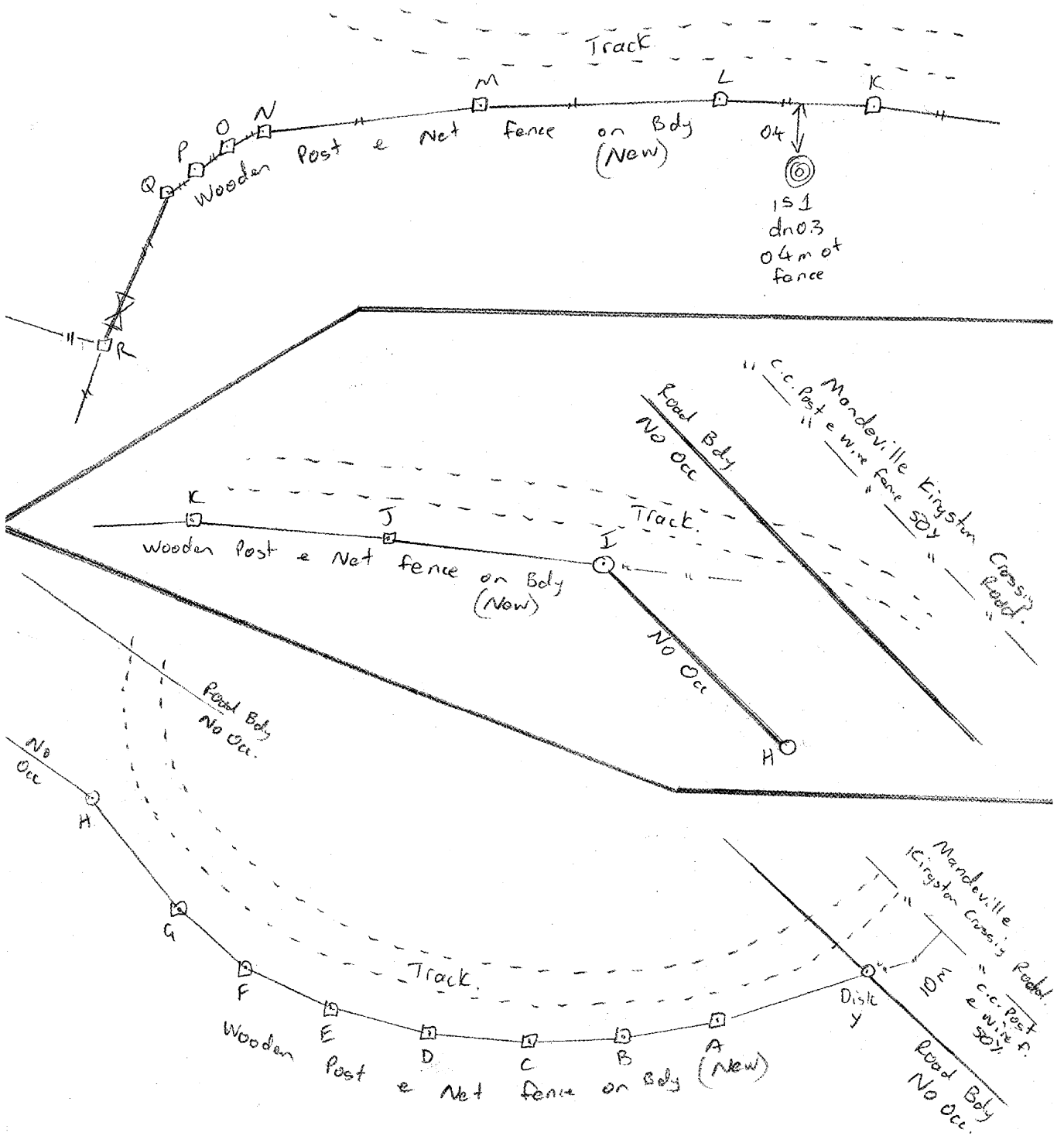
OCCUPATION DIAGRAM

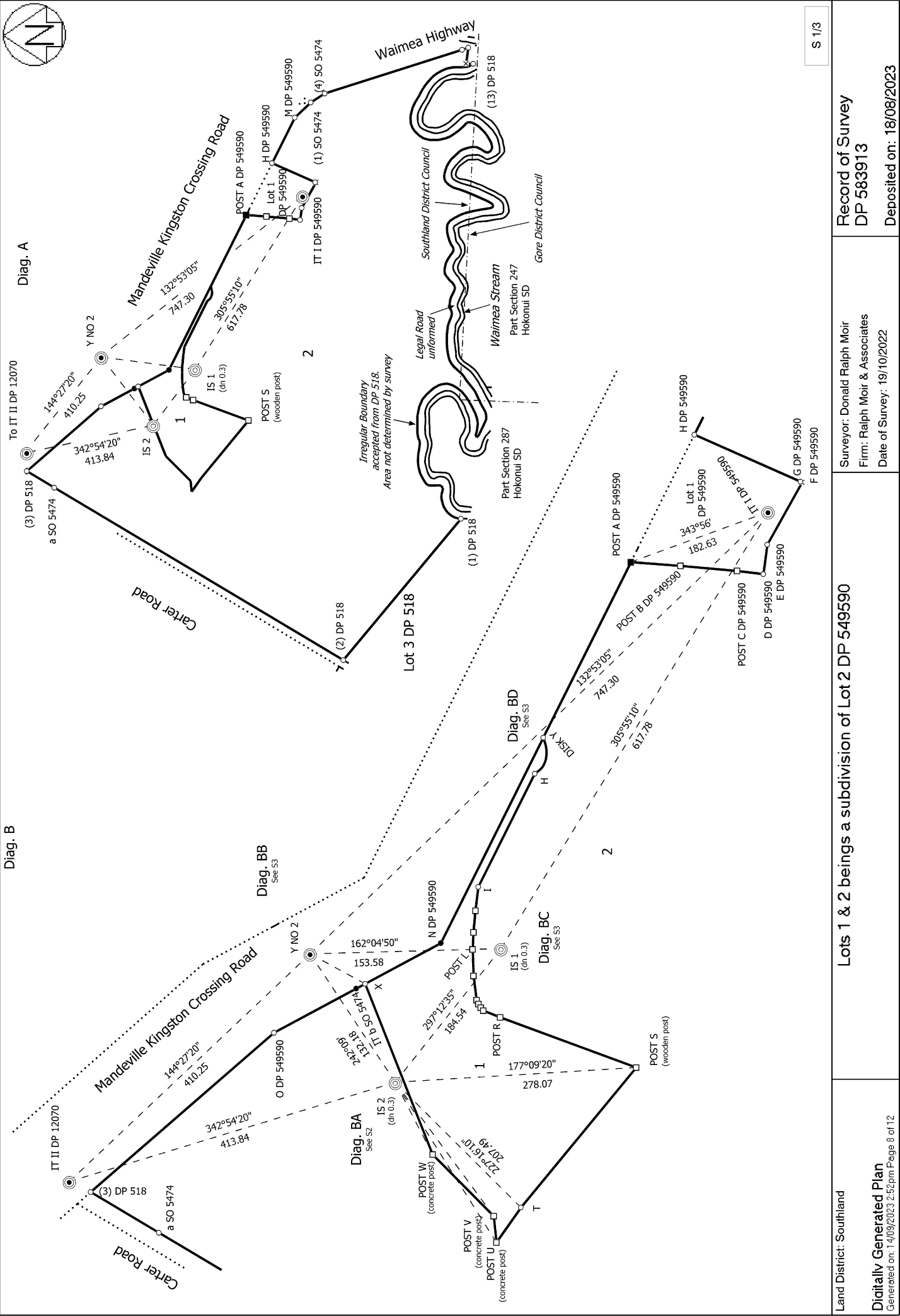
⊙ IT 11 DP 12070
dn 0.2
in ditch.

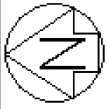




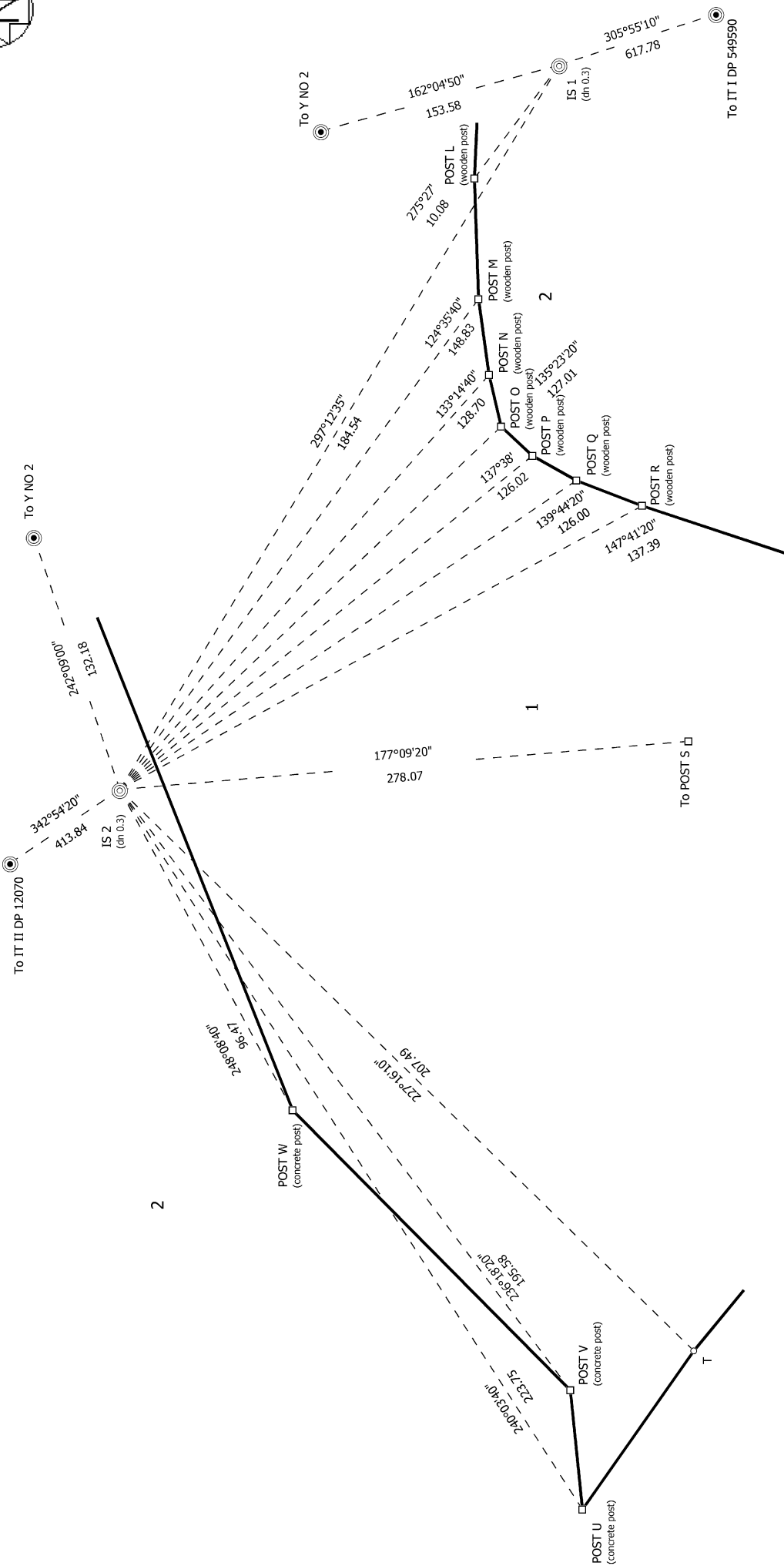
OCCUPATION DIAGRAM



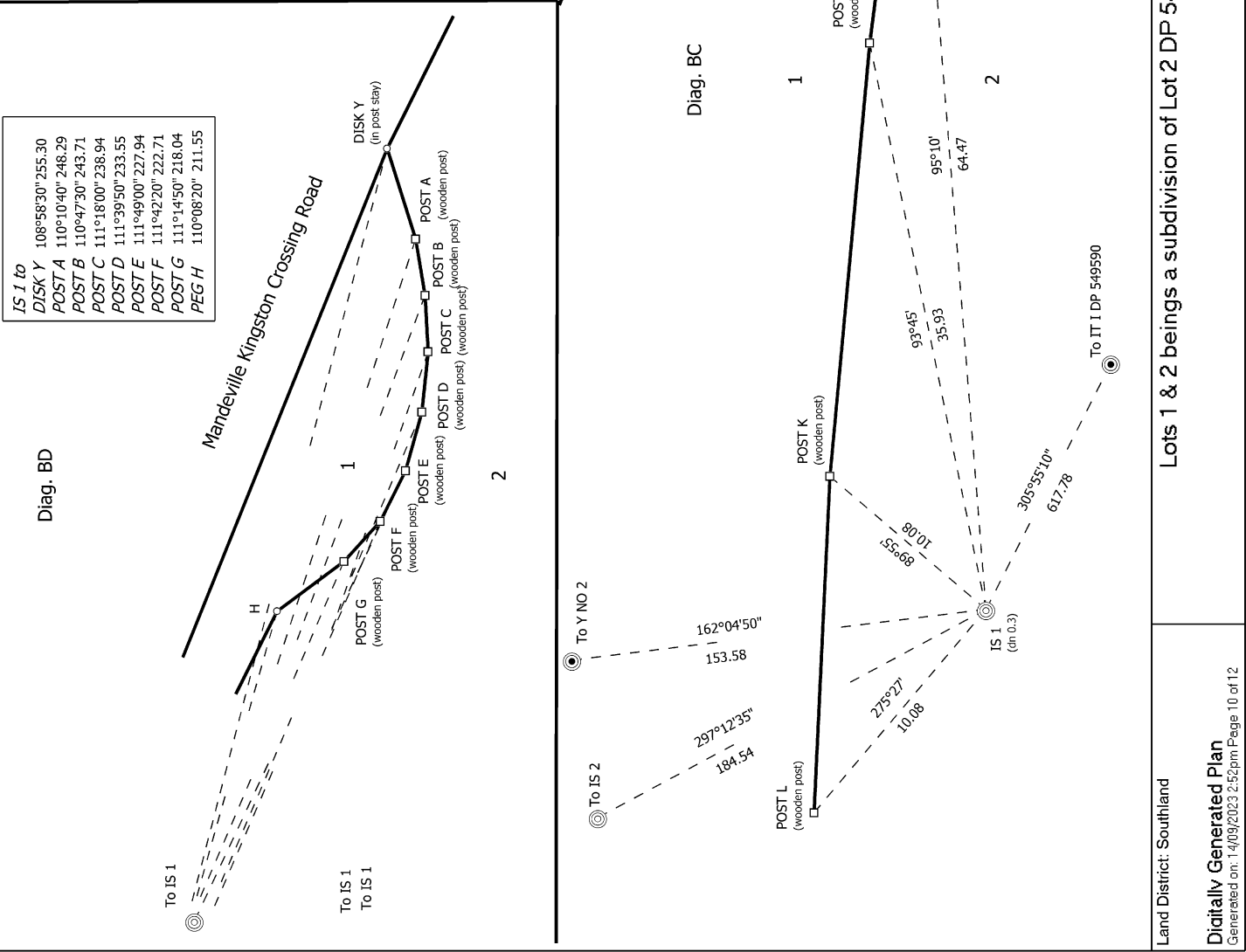
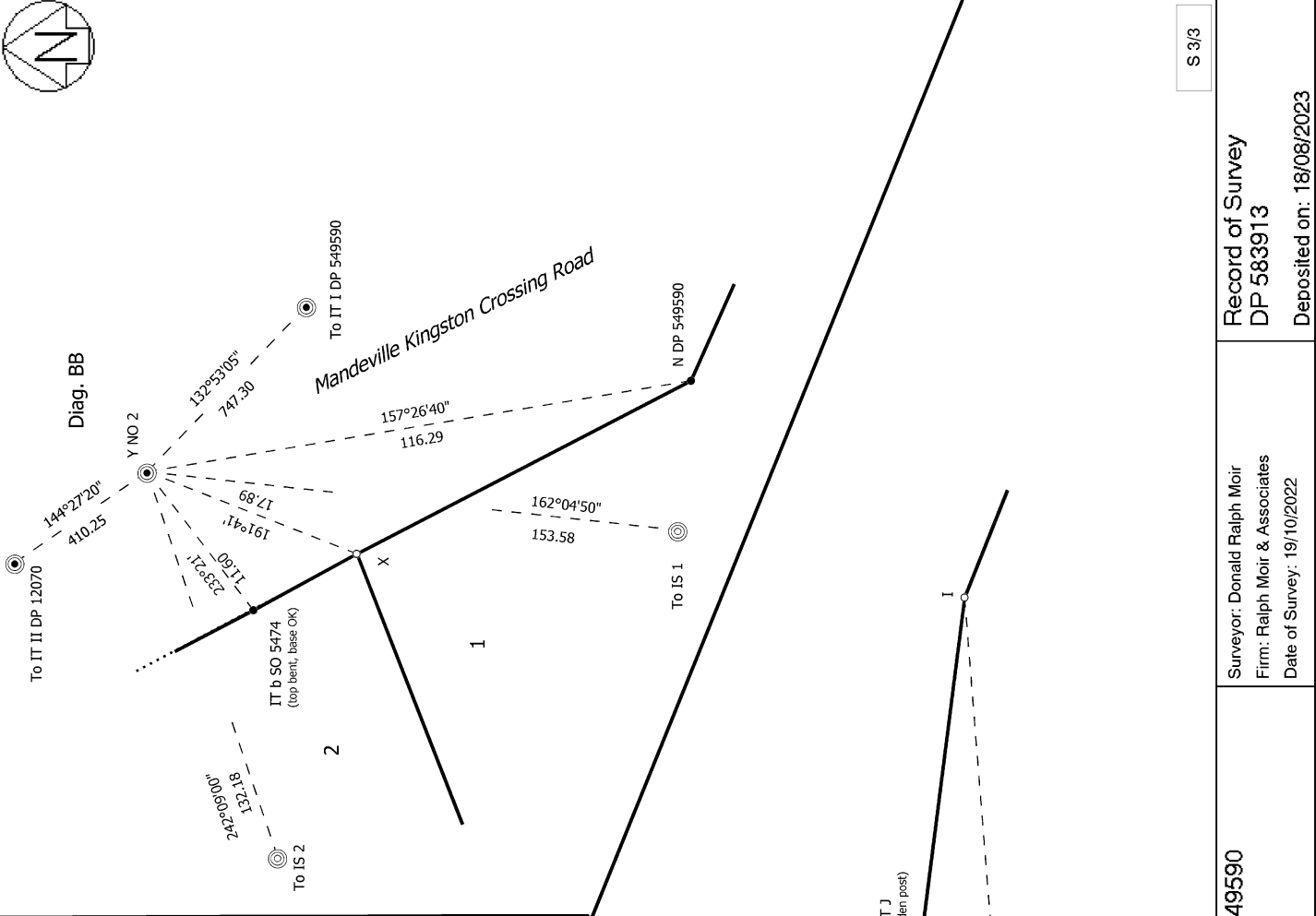
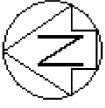




Diag. BA



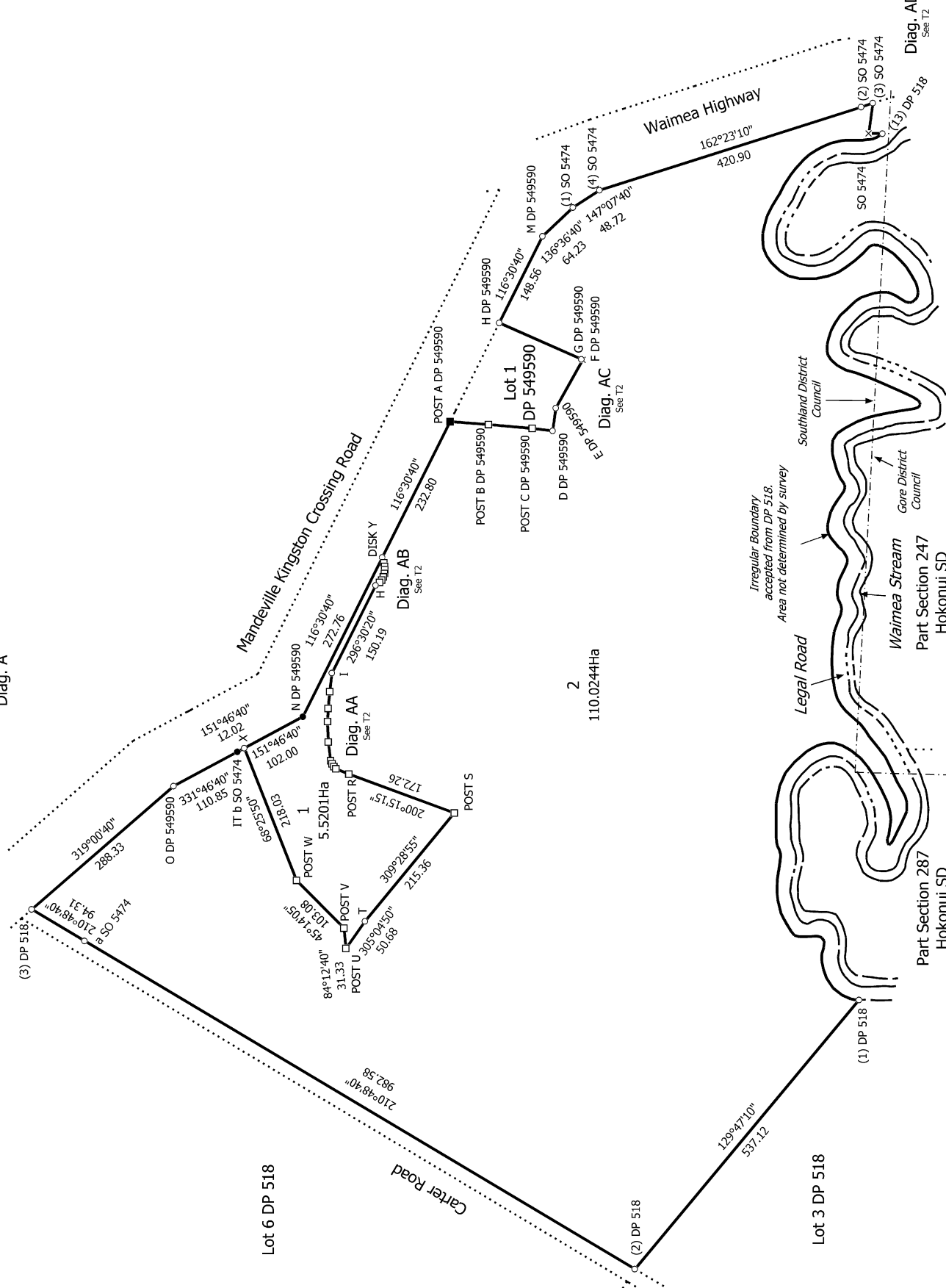
<p>Land District: Southland</p> <p>Digitally Generated Plan</p> <p>Generated on: 14/09/2023 2:52pm Page 9 of 12</p>	<p>Lots 1 & 2 being a subdivision of Lot 2 DP 549590</p>	<p>Surveyor: Donald Ralph Moir Firm: Ralph Moir & Associates Date of Survey: 19/10/2022</p>	<p>Record of Survey DP 583913 Deposited on: 18/08/2023</p>
--	---	---	--



IS 1 to	DISK Y	108°58'30" 255.30
	POST A	110°10'40" 248.29
	POST B	110°47'30" 243.71
	POST C	111°18'00" 238.94
	POST D	111°39'50" 233.55
	POST E	111°49'00" 227.94
	POST F	111°42'20" 222.71
	POST G	111°14'50" 218.04
	POST H	110°08'20" 211.55



Diag. A



T 1/2

Land District: Southland

Digitally Generated Plan

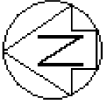
Generated on: 14/09/2023 2:52pm Page 11 of 12

Lots 1 & 2 beings a subdivision of Lot 2 DP 549590

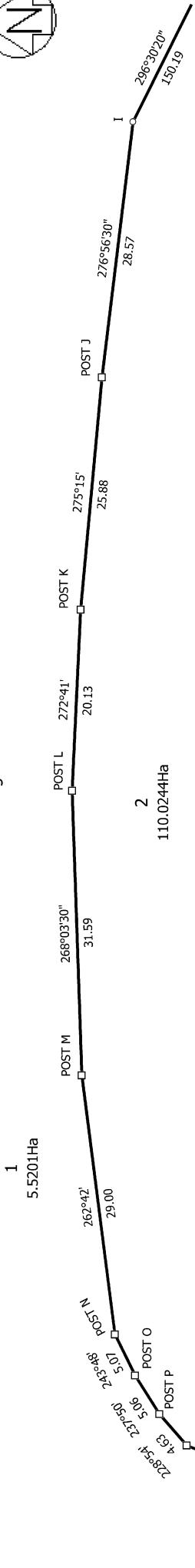
Surveyor: Donald Ralph Moir
Firm: Ralph Moir & Associates
Date of Survey: 19/10/2022

Record of Survey
DP 583913

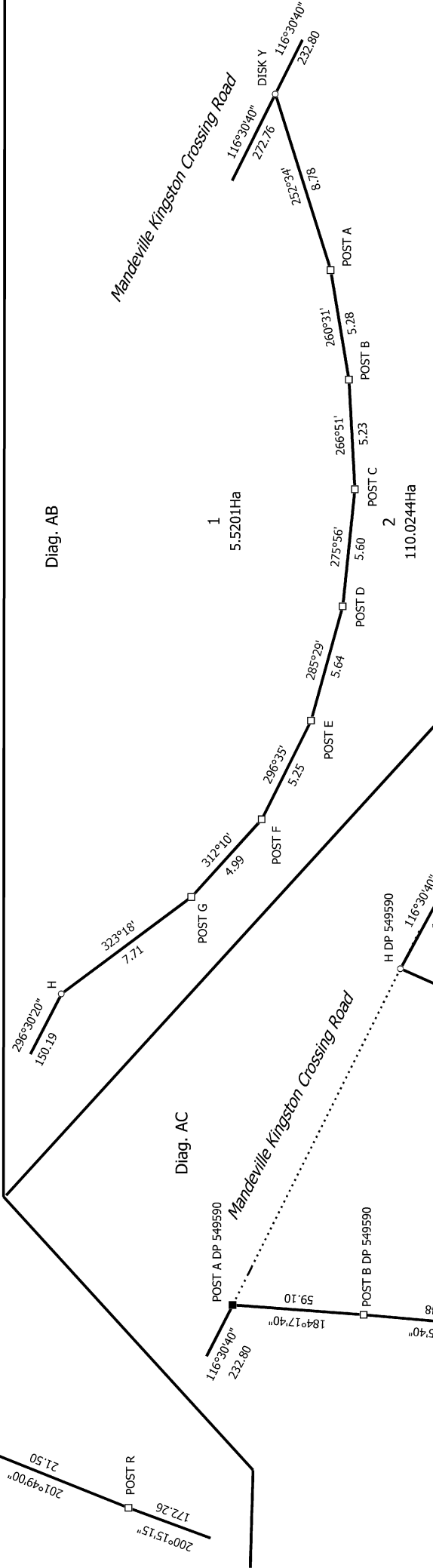
Deposited on: 18/08/2023



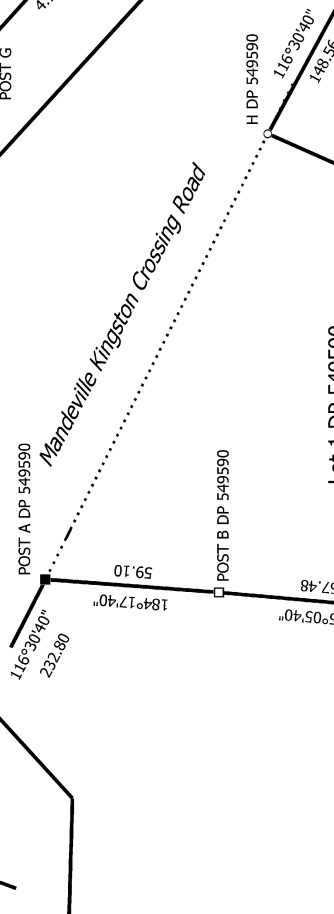
Diag. AA



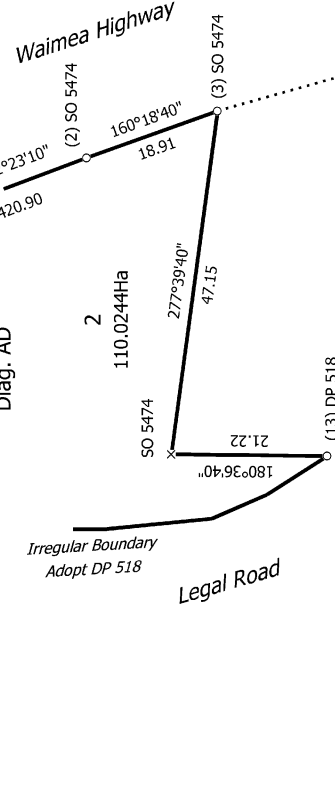
Diag. AB



Diag. AC



Diag. AD



T 2/2

Land District: Southland

Digitally Generated Plan
Generated on: 14/09/2023 2:52pm Page 12 of 12

Lots 1 & 2 being a subdivision of Lot 2 DP 549590

Surveyor: Donald Ralph Moir
Firm: Ralph Moir & Associates
Date of Survey: 19/10/2022

Record of Survey
DP 583913

Deposited on: 18/08/2023