

Record of Survey - DP 583331

Survey Number DP 583331
Surveyor Reference 16958 Newlove ZM MW
Surveyor Phillip John Lash
Survey Firm Reyburn & Bryant 1999 Ltd
Surveyor Declaration I Phillip John Lash, being a licensed cadastral surveyor, certify that--
 (a) this dataset provided by me and its related survey are accurate, correct and in accordance with the Cadastral Survey Act 2002 and Cadastral Survey Rules 2021; and
 (b) the survey was undertaken by me or under my personal direction.
 Declared on 20 Jan 2023 02:44 PM

Survey Details

Dataset Description Lots 1 and 2 being a Subdivision of Lots 10 and 11 DP 1457
Purpose LT Subdivision
Status Deposited **Type** Survey
Land District North Auckland **Survey Class** Class B
Meridional Circuit Mount Eden 2000 **Vertical Datum** None

Survey Dates

Surveyed Date 07/11/2022 **Certified Date** 20/01/2023
Submitted Date 20/01/2023 14:44:29 **Survey Approval Date** 21/02/2023
Deposit Date 18/07/2023

Referenced Surveys

Survey Number	Land District	Bearing Correction
DP 143367	North Auckland	0°00'00"
DP 1457	North Auckland	0°00'00"
DP 188337	North Auckland	0°00'00"
DP 23852	North Auckland	0°00'00"
SO 2256/4	North Auckland	0°00'00"
SO 38129	North Auckland	0°00'00"
DP 28426	North Auckland	0°00'00"

Territorial Authorities

Kaipara District

Comprised In

RT NA231/256
RT NA28A/68

Created Parcels

Parcels	Parcel Intent	Area	RT Reference
Lot 1 Deposited Plan 583331	Fee Simple Title	2.6578 Ha	1094367
Lot 2 Deposited Plan 583331	Fee Simple Title	157.2750 Ha	1094368
Area A Deposited Plan 583331	Easement		
Area B Deposited Plan 583331	Easement		



Record of Survey - DP 583331

Created Parcels

Parcels	Parcel Intent	Area	RT Reference
Area C Deposited Plan 583331	Easement		
Area D Deposited Plan 583331	Easement		
Area E Deposited Plan 583331	Easement		
Area F Deposited Plan 583331	Easement		
Total Area		<hr/> 159.9328 Ha	

Mark and Vector

Survey Number DP 583331

Meridional Circuit Mount Eden 2000

From	To	Code	Bearing	Adpt Surv	Bearing Correction	Distance	Adpt Surv	Class
IB X DP 143367	IB III DP 143367	ob0	94°19'15" M			424.405 M		
IB III DP 143367	IB VI DP 143367	ob1	126°13'50" M			283.19 M		
IB VI DP 143367	IT V DP 150064	ob3	216°17'10" M			2,373.12 M		
IT V DP 150064	IT III DP 121600	ob4	288°19'20" M			278.31 M		
IT III DP 121600	IP SO 38129	ob5	351°40'20" M			1,661.97 M		
IP SO 38129	IS SO 38129	ob6	39°02'00" M			133.96 M		
IS SO 38129	IT E DP 583331	ob9	326°00'10" M			445.80 M		
IT E DP 583331	IT 3 DP 583331	ob13	322°55'50" M			260.65 M		
IT 3 DP 583331	IP (6) DP 28426	ob17	101°53'40" M			307.39 M		
IP (6) DP 28426	IS 1 DP 583331	ob19	96°25'00" M			231.92 M		
IS 1 DP 583331	IB 2 DP 583331	ob21	101°34'40" M			546.99 M		
IB 2 DP 583331	IB X DP 143367	ob22	101°17'00" M			522.74 M		
IS SO 38129	IB 2 DP 583331	ob10	60°11'35" M			761.48 M		
IT E DP 583331	IT 4 DP 583331	ob14	105°48'00" M			131.85 M		
IT 4 DP 583331	IP (6) DP 28426	ob41	5°19'00" M			181.30 M		
IB III DP 143367	PEG (21) DP 23852	ob2	8°41'00" A	DP 143367	0°00'00"	25.66 A	DP 143367	
PEG (21) DP 23852	PEG (22) SO 2256/4	ob23	180°00'00" A	SO 2256/4	0°00'00"	24.74 A	DP 23852	
PEG (22) SO 2256/4	PEG (23) SO 2256/4	ob24	305°35'00" A	SO 2256/4	0°00'00"	222.05 A	SO 2256/4	
PEG (23) SO 2256/4	PEG (24) SO 2256/4	ob25	277°38'00" A	SO 2256/4	0°00'00"	94.47 A	SO 2256/4	
PEG (24) SO 2256/4	PEG (25) SO 2256/4	ob26	230°20'00" A	SO 2256/4	0°00'00"	166.49 A	SO 2256/4	
PEG (25) SO 2256/4	PEG (26) SO 2256/4	ob27	280°10'00" A	SO 2256/4	0°00'00"	102.15 A	SO 2256/4	
PEG (26) SO 2256/4	PEG (27) SO 2256/4	ob28	280°10'00" A	SO 2256/4	0°00'00"	613.14 A	SO 2256/4	
PEG (27) SO 2256/4	PEG (28) DP 28426	ob29	280°10'00" A	SO 2256/4	0°00'00"	10.54 A	DP 28426	
PEG (28) DP 28426	IP (6) DP 28426	ob30	280°10'00" A	SO 2256/4	0°00'00"	598.84 A	DP 28426	
IP (6) DP 28426	PEG 10 DP 583331	ob20	280°10'00" M			4.02 M		
IS SO 38129	IS (7) SO 38129	ob11	240°36'00" M			125.87 M		
IS (7) SO 38129	PEG 16 DP 583331	ob32	0°00'00" A	SO 2256/4	0°00'00"	157.13 A	SO 38129	Class B
PEG 16 DP 583331	PEG 14 DP 583331	ob34	0°00'00" A	SO 2256/4	0°00'00"	260.38 C		Class B
PEG 14 DP 583331	PEG 10 DP 583331	ob35	0°00'00" A	SO 2256/4	0°00'00"	159.24 C		Class B
IP SO 38129	PEG IX SO 38129	ob7	95°41'00" A	SO 38129	0°00'00"	2.13 A	SO 38129	

Mark and Vector

Survey Number DP 583331

Meridional Circuit Mount Eden 2000

From	To	Code	Bearing	Adpt Surv	Bearing Correction	Distance	Adpt Surv	Class
PEG IX SO 38129	PEG (29) SO 38129	ob36	236°34'20"	A SO 38129	0°00'00"	32.87 A	SO 38129	
PEG (29) SO 38129	PEG (30) SO 38129	ob37	0°00'00"	A SO 2256/4	0°00'00"	39.71 A	SO 38129	Class B
PEG (30) SO 38129	IS (7) SO 38129	ob40	0°00'00"	A SO 2256/4	0°00'00"	20.90 A	SO 38129	Class B
PEG 10 DP 583331	IP E SO 38129	ob31	223°49'40"	A SO 38129	0°00'00"	201.65 A	SO 38129	
IP E SO 38129	IT E DP 583331	ob33	332°15'00"	C		0.16 C		
PEG (29) SO 38129	UNMK (50) SO 38129	ob38	180°00'00"	A SO 2256/4	0°00'00"	12.05 A	SO 38129	Class B
UNMK (50) SO 38129	PEG (6) SO 2256/4	ob43	180°00'00"	A SO 2256/4	0°00'00"	765.67 A	SO 38129	Class B
PEG (6) SO 2256/4	PEG (5) SO 2256/4	ob45	270°00'00"	A SO 2256/4	0°00'00"	603.10 A	DP 1457	Class B
PEG (5) SO 2256/4	UNMK (51) SO 38129	ob46	0°00'00"	A SO 2256/4	0°00'00"	473.63 A	SO 38129	
UNMK (51) SO 38129	UNMK (58) SO 38129	ob50	0°00'00"	A SO 2256/4	0°00'00"	13.62 A	SO 38129	
UNMK (58) SO 38129	PEG (33) SO 2256/4	ob67	0°00'00"	A SO 2256/4	0°00'00"	899.36 A	SO 38129	
PEG (33) SO 2256/4	PEG (34) SO 2256/4	ob48	74°38'00"	A SO 2256/4	0°00'00"	312.21 A	SO 2256/4	Class B
PEG (34) SO 2256/4	PEG 11 DP 583331	ob49	100°10'00"	A SO 2256/4	0°00'00"	153.93 C		Class B
PEG 11 DP 583331	UNMK 80 DP 583331	ob52	100°10'00"	A SO 2256/4	0°00'00"	71.49 C		Class B
UNMK 80 DP 583331	UNMK 81 DP 583331	ob54	100°10'00"	A SO 2256/4	0°00'00"	2.01 C		Class B
UNMK 81 DP 583331	PEG 10 DP 583331	ob56	100°10'00"	A SO 2256/4	0°00'00"	79.86 C		Class B
PEG (5) SO 2256/4	UNMK (52) SO 38129	ob47	316°50'00"	A SO 2256/4	0°00'00"	449.09 A	SO 38129	Class B
UNMK (52) SO 38129	UNMK (53) DP 188337	ob57	316°50'00"	A SO 2256/4	0°00'00"	6.71 A	DP 188337	Class B
UNMK (53) DP 188337	UNMK (54) SO 38129	ob58	316°50'00"	A SO 2256/4	0°00'00"	3.35 A	DP 188337	Class B
UNMK (54) SO 38129	UNMK (55) SO 38129	ob60	316°50'00"	A SO 2256/4	0°00'00"	290.71 A	SO 38129	Class B
UNMK (55) SO 38129	UNMK (56) SO 38129	ob61	316°50'00"	A SO 2256/4	0°00'00"	2.01 A	SO 38129	Class B
UNMK (56) SO 38129	PEG (35) SO 2256/4	ob63	316°50'00"	A SO 2256/4	0°00'00"	861.02 A	SO 38129	Class B
PEG (35) SO 2256/4	PEG (36) SO 2256/4	ob64	86°55'00"	A SO 2256/4	0°00'00"	412.39 A	SO 2256/4	Class B
PEG (36) SO 2256/4	PEG (33) SO 2256/4	ob66	74°38'00"	A SO 2256/4	0°00'00"	715.57 A	SO 2256/4	Class B

Mark and Vector

Survey Number DP 583331

Meridional Circuit Mount Eden 2000

From	To	Code	Bearing	Adpt Surv	Bearing Correction	Distance	Adpt Surv	Class
PEG 11 DP 583331	PEG 12 DP 583331	ob53	179°42'00"	C		208.88 C		Class B
PEG 12 DP 583331	PEG 13 DP 583331	ob69	62°26'00"	C		44.54 C		Class B
PEG 13 DP 583331	UNMK 92 DP 583331	ob70	88°59'00"	C		11.85 C		Class B
UNMK 92 DP 583331	UNMK 93 DP 583331	ob82	88°59'00"	C		2.01 C		Class B
UNMK 93 DP 583331	PEG 14 DP 583331	ob84	88°59'00"	C		96.48 C		Class B
IP SO 38129	PEG (30) SO 38129	ob8	310°11'00"	M		33.12 M		
IS SO 38129	PEG 16 DP 583331	ob12	311°00'00"	M		145.31 M		
IT 3 DP 583331	PEG 11 DP 583331	ob18	103°42'00"	M		150.17 M		
IT E DP 583331	PEG 12 DP 583331	ob15	195°31'00"	M		37.85 M		
IT E DP 583331	PEG 13 DP 583331	ob16	118°23'00"	M		33.37 M		
IT 4 DP 583331	PEG 14 DP 583331	ob42	30°14'00"	M		25.46 M		
UNMK 80 DP 583331	UNMK 94 DP 583331	ob55	188°56'00"	C		104.43 C		Class B
UNMK 94 DP 583331	UNMK 92 DP 583331	ob86	181°22'00"	C		72.29 C		Class B
UNMK 92 DP 583331	UNMK 82 DP 583331	ob83	181°22'00"	C		19.38 C		Class B
UNMK 82 DP 583331	UNMK 83 DP 583331	ob71	271°22'00"	C		3.02 C		Class B
UNMK 83 DP 583331	UNMK 84 DP 583331	ob72	181°22'00"	C		4.02 C		Class B
UNMK 84 DP 583331	UNMK 85 DP 583331	ob73	91°22'00"	C		5.35 C		Class B
UNMK 85 DP 583331	UNMK 86 DP 583331	ob74	176°34'00"	C		130.98 C		Class B
UNMK 86 DP 583331	UNMK 87 DP 583331	ob75	157°37'00"	C		83.89 C		Class B
UNMK 87 DP 583331	UNMK 88 DP 583331	ob76	67°37'00"	C		2.01 C		Class B
UNMK 88 DP 583331	UNMK 89 DP 583331	ob77	337°37'00"	C		83.55 C		Class B
UNMK 89 DP 583331	UNMK 90 DP 583331	ob78	356°34'00"	C		134.50 C		Class B
UNMK 90 DP 583331	UNMK 91 DP 583331	ob79	271°22'00"	C		2.01 C		Class B
UNMK 91 DP 583331	UNMK 93 DP 583331	ob80	1°22'00"	C		19.46 C		Class B

Mark and Vector

Survey Number DP 583331

Meridional Circuit Mount Eden 2000

From	To	Code	Bearing	Adpt Surv	Bearing Correction	Distance	Adpt Surv	Class
UNMK 93 DP 583331	UNMK 95 DP 583331	ob85	1°22'00"	C		72.07 C		Class B
UNMK 95 DP 583331	UNMK 81 DP 583331	ob87	8°56'00"	C		104.25 C		Class B
PEG (29) SO 38129	PEG X SO 38129	ob39	236°34'20"	A SO 38129	0°00'00"	237.12 A SO 38129		Class B
PEG X SO 38129	PEG XI SO 38129	ob88	255°35'00"	A SO 38129	0°00'00"	251.80 A SO 38129		Class B
PEG XI SO 38129	PEG XII SO 38129	ob106	241°56'00"	A SO 38129	0°00'00"	68.98 A SO 38129		Class B
PEG XII SO 38129	UNMK (78) SO 38129	ob107	245°40'00"	A SO 38129	0°00'00"	70.81 A SO 38129		Class B
UNMK (78) SO 38129	UNMK (58) SO 38129	ob108	225°21'00"	A SO 38129	0°00'00"	50.55 A SO 38129		Class B
UNMK (50) SO 38129	UNMK (64) SO 38129	ob44	236°34'20"	A SO 38129	0°00'00"	232.17 A SO 38129		Class B
UNMK (64) SO 38129	UNMK (65) SO 38129	ob109	255°35'00"	A SO 38129	0°00'00"	252.28 A SO 38129		Class B
UNMK (65) SO 38129	UNMK (66) SO 38129	ob110	241°56'00"	A SO 38129	0°00'00"	68.10 A SO 38129		Class B
UNMK (66) SO 38129	PEG XIII SO 38129	ob111	245°40'00"	A SO 38129	0°00'00"	69.34 A SO 38129		Class B
PEG XIII SO 38129	UNMK (67) SO 38129	ob112	225°21'00"	A SO 38129	0°00'00"	56.97 A SO 38129		Class B
UNMK (67) SO 38129	UNMK (51) SO 38129	ob113	240°32'00"	A SO 38129	0°00'00"	1.41 A SO 38129		Class B
UNMK (58) SO 38129	PEG XIV SO 38129	ob68	225°21'00"	A SO 38129	0°00'00"	6.88 A SO 38129		Class B
PEG XIV SO 38129	PEG XV SO 38129	ob89	240°32'00"	A SO 38129	0°00'00"	40.72 A SO 38129		Class B
PEG XV SO 38129	UNMK (60) SO 38129	ob90	243°57'00"	C		57.54 C		Class B
UNMK (60) SO 38129	PEG XVII SO 38129	ob92	256°20'00"	A SO 38129	0°00'00"	73.06 A SO 38129		Class B
PEG XVII SO 38129	UNMK (49) SO 38129	ob93	240°13'30"	A SO 38129	0°00'00"	100.40 A SO 38129		Class B
UNMK (49) SO 38129	UNMK (77) SO 38129	ob94	253°00'00"	A SO 38129	0°00'00"	43.27 A SO 38129		Class B
UNMK (77) SO 38129	UNMK 96 DP 583331	ob95	225°07'00"	A SO 38129	0°00'00"	24.46 C		Class B
UNMK 96 DP 583331	UNMK (54) SO 38129	ob96	225°07'00"	A SO 38129	0°00'00"	7.30 C		Class B
UNMK (51) SO 38129	UNMK (79) SO 38129	ob51	240°32'00"	A SO 38129	0°00'00"	40.94 A SO 38129		Class B
UNMK (79) SO 38129	PEG XVI SO 38129	ob101	243°57'00"	C		58.93 C		Class B
PEG XVI SO 38129	UNMK (63) SO 38129	ob102	256°20'00"	A SO 38129	0°00'00"	72.74 A SO 38129		Class B

Mark and Vector

Survey Number DP 583331

Meridional Circuit Mount Eden 2000

From	To	Code	Bearing	Adpt Surv	Bearing Correction	Distance	Adpt Surv	Class
UNMK (63) SO 38129	PEG XVIII SO 38129	ob103	240°13'30"	A SO 38129	0°00'00"	100.12 A	SO 38129	Class B
PEG XVIII SO 38129	PEG XIX SO 38129	ob104	253°00'00"	A SO 38129	0°00'00"	41.90 A	SO 38129	Class B
PEG XIX SO 38129	UNMK (52) SO 38129	ob105	225°07'00"	A SO 38129	0°00'00"	29.57 A	SO 38129	Class B
PEG XV SO 38129	PEG XVI SO 38129	ob91	234°13'00"	A SO 38129	0°00'00"	59.49 A	SO 38129	
UNMK (53) DP 188337	UNMK 96 DP 583331	ob59	20°47'00"	A DP 188337	0°00'00"	8.13 C		Class B
UNMK 96 DP 583331	UNMK (68) DP 188337	ob97	20°47'00"	A DP 188337	0°00'00"	0.44 C		Class B
UNMK (68) DP 188337	UNMK (69) DP 188337	ob114	290°47'00"	A DP 188337	0°00'00"	3.00 A	DP 188337	Class B
UNMK (69) DP 188337	UNMK (54) SO 38129	ob115	200°47'00"	A DP 188337	0°00'00"	7.09 A	DP 188337	Class B
UNMK (55) SO 38129	UNMK (57) SO 38129	ob62	47°11'00"	A SO 38129	0°00'00"	21.00 A	SO 38129	Class B
UNMK (57) SO 38129	UNMK (59) SO 38129	ob65	46°27'00"	A SO 38129	0°00'00"	30.34 A	SO 38129	Class B
UNMK (59) SO 38129	UNMK (61) SO 38129	ob81	40°57'00"	A SO 38129	0°00'00"	38.85 A	SO 38129	Class B
UNMK (61) SO 38129	UNMK (62) SO 38129	ob98	64°17'00"	A SO 38129	0°00'00"	32.21 A	SO 38129	Class B
UNMK (62) SO 38129	PEG XLVII SO 38129	ob99	73°35'00"	A SO 38129	0°00'00"	18.00 A	SO 38129	Class B
PEG XLVII SO 38129	PEG (37) SO 38129	ob100	76°46'00"	A SO 38129	0°00'00"	10.06 A	SO 38129	Class B
PEG (37) SO 38129	UNMK (70) SO 38129	ob116	346°46'00"	A SO 38129	0°00'00"	10.06 A	SO 38129	Class B
UNMK (70) SO 38129	UNMK (71) SO 38129	ob117	256°46'00"	A SO 38129	0°00'00"	10.06 A	SO 38129	Class B
UNMK (71) SO 38129	UNMK (72) SO 38129	ob118	166°46'00"	A SO 38129	0°00'00"	8.05 A	SO 38129	Class B
UNMK (72) SO 38129	UNMK (73) SO 38129	ob119	253°35'00"	A SO 38129	0°00'00"	18.23 A	SO 38129	Class B
UNMK (73) SO 38129	UNMK (74) SO 38129	ob120	244°17'00"	A SO 38129	0°00'00"	32.77 A	SO 38129	Class B
UNMK (74) SO 38129	UNMK (75) SO 38129	ob121	220°57'00"	A SO 38129	0°00'00"	39.17 A	SO 38129	Class B
UNMK (75) SO 38129	UNMK (76) SO 38129	ob122	226°27'00"	A SO 38129	0°00'00"	30.26 A	SO 38129	Class B
UNMK (76) SO 38129	UNMK (56) SO 38129	ob123	227°11'00"	A SO 38129	0°00'00"	21.00 A	SO 38129	Class B

Mark Name	Mark Condition	Description
IB 2 DP 583331		0.3 deep in berm

Mark and Vector

Survey Number DP 583331
Meridional Circuit Mount Eden 2000

Mark Name	Mark Condition	Description
IB III DP 143367		0.3 deep in paddock, 5m sth of road formation
IB VI DP 143367		0.3 deep in paddock
IB X DP 143367		0.3 deep, in paddock south of pumpshed
IP (6) DP 28426		nth side of fence , at gnd level
IP SO 38129		Iron Tube 0.2 deep in paddock
IS 1 DP 583331		flush in gravel bay
IS SO 38129		at top of steep slope, at gnd level
IT 3 DP 583331		Iron Tube 0.3 deep in berm
IT 4 DP 583331		Iron Tube 0.3 deep on ridge
IT E DP 583331		IP E SO 38129 disturbed position,0.2 deep in gravel
IT III DP 121600		0.3 deep on ridge
IT V DP 150064		0.2 deep in berm
PEG 10 DP 583331		Peg DP 1457 renewed.
PEG 16 DP 583331		Peg VIII DP 28426 reinstated

***** End of Report *****

Schedule / Memorandum

Land Registration District

North Auckland

Plan Number

DP 583331

Territorial Authority

Kaipara District Council

Council Reference

RM 220070

Amalgamation Condition

(Pursuant to s220 Resource Management Act 1991)

That Lot 1 DP 583331 (RT 1094367) and Section 20 Block XII Waipoua Survey District (RT NA28A/68) be held in the same Record of Title.

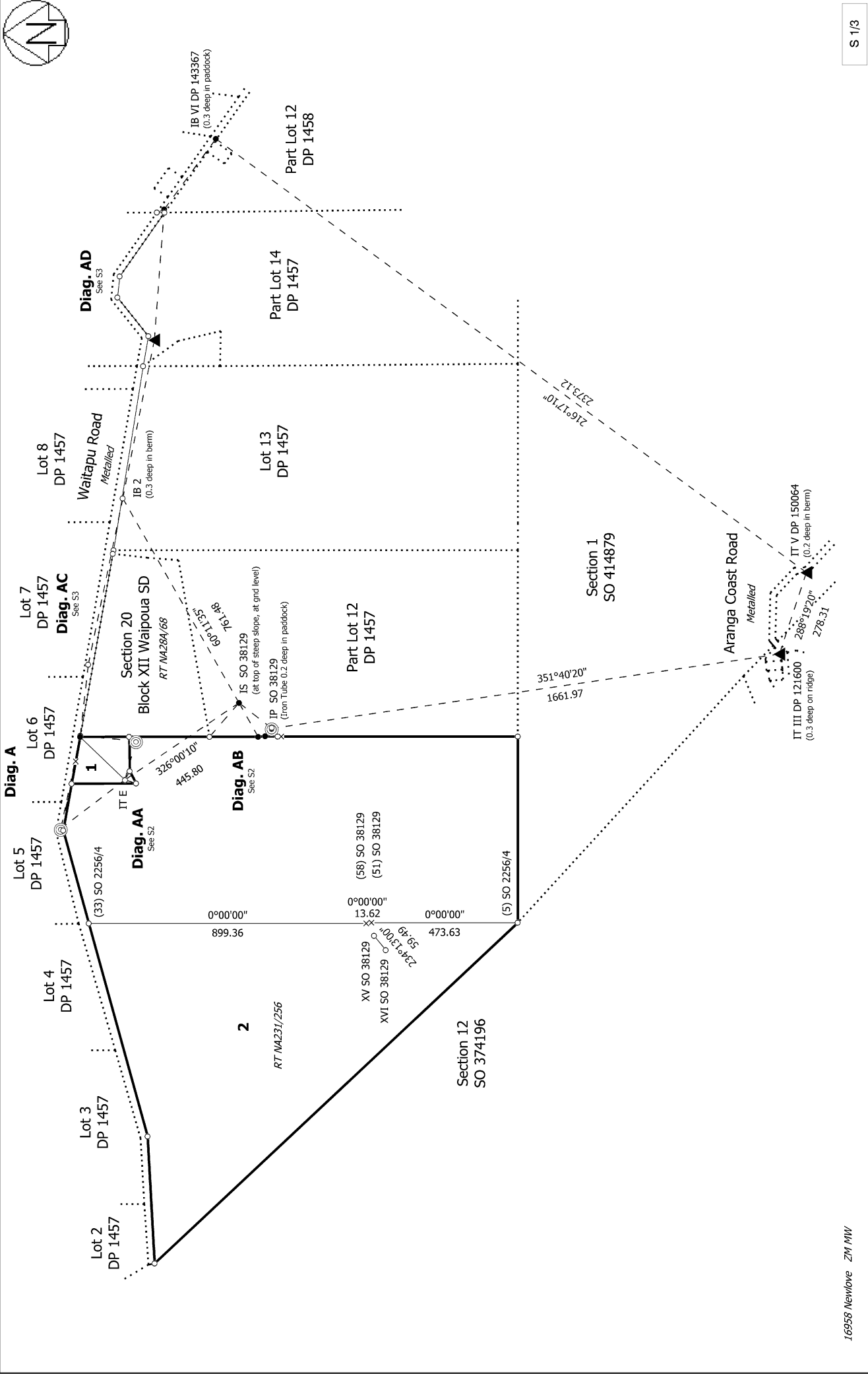
See LINZ ref 1784448

Schedule of Existing Easements

Purpose	Shown	Burdened Land (Servient Tenement)	Created by
Right to take Water	E	Lot 1 DP 583331	T 471657
	F	Lot 2 DP 583331	
Right of Way over part and a Water Right	A, B & C	Lot 2 DP 583331	Proclamation 14797

Schedule of Existing Easements in Gross

Purpose	Shown	Burdened Land (Servient Tenement)	Created by
Electricity Right	B & D	Lot 2 DP 583331	T D339526.1



16958 NewWave ZM MW

Land District: North Auckland

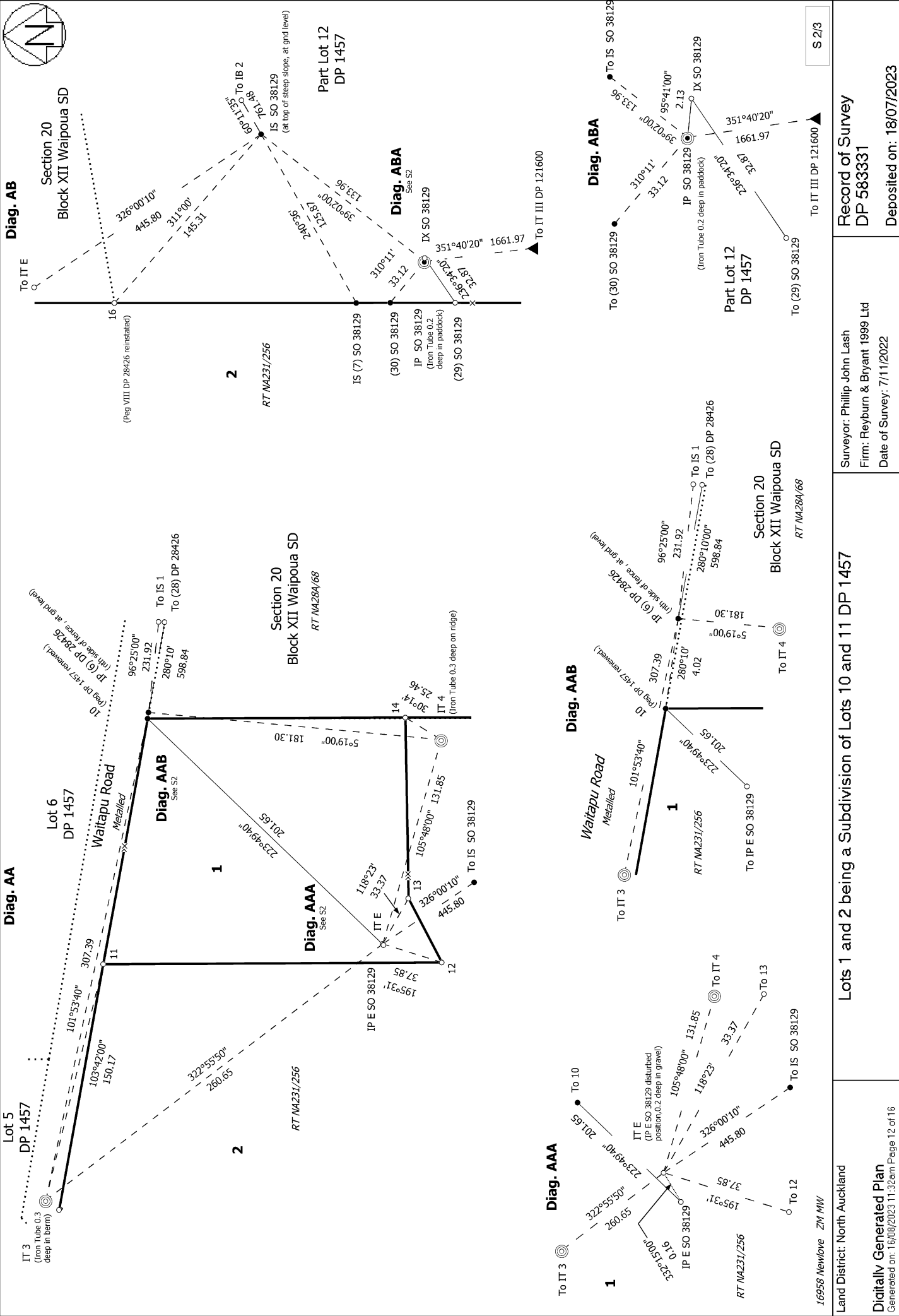
Digitally Generated Plan

Generated on: 16/08/2023 11:32am Page 11 of 16

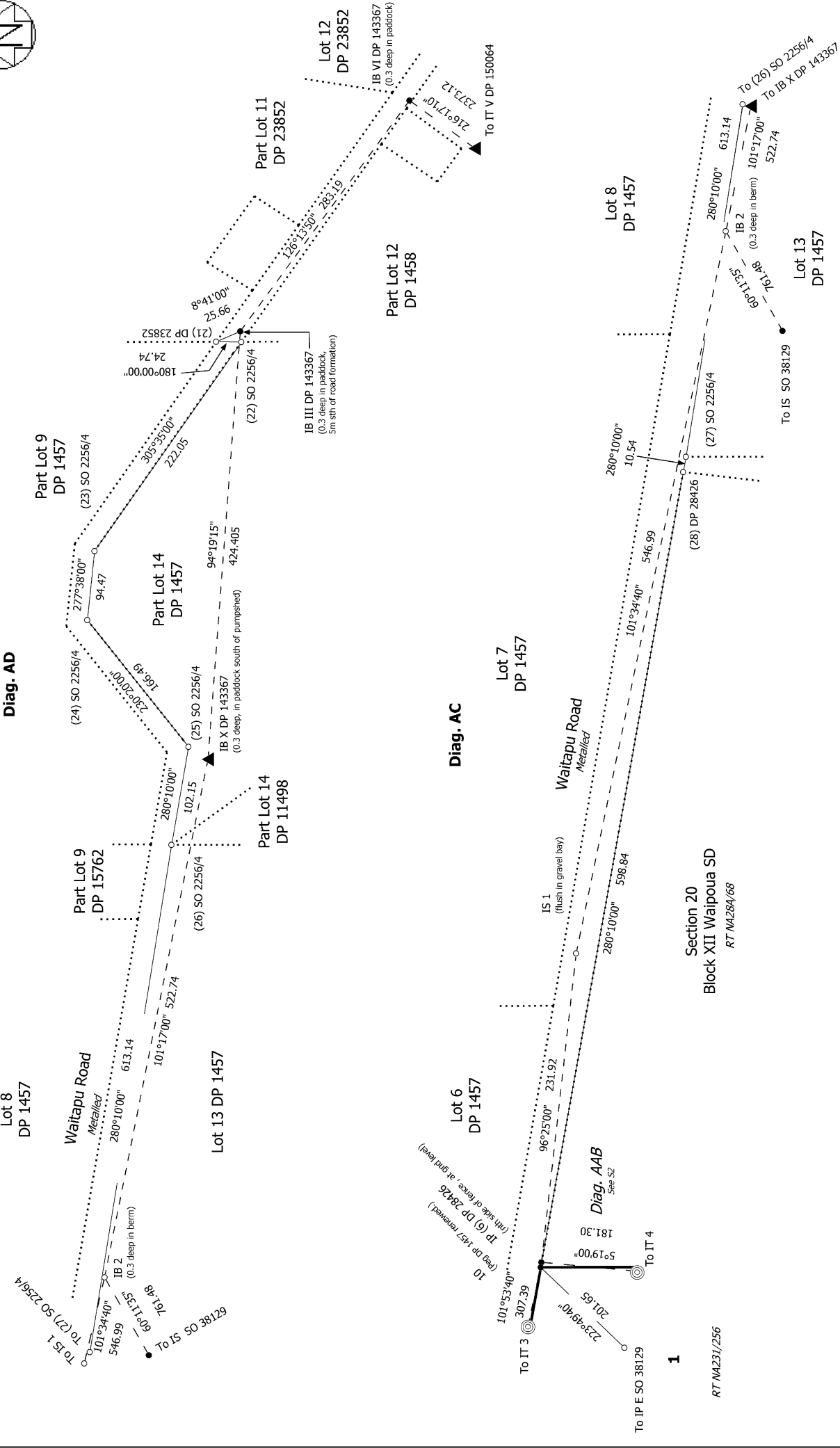
Lots 1 and 2 being a Subdivision of Lots 10 and 11 DP 1457

Surveyor: Phillip John Lash
Firm: Reyburn & Bryant 1999 Ltd
Date of Survey: 7/11/2022

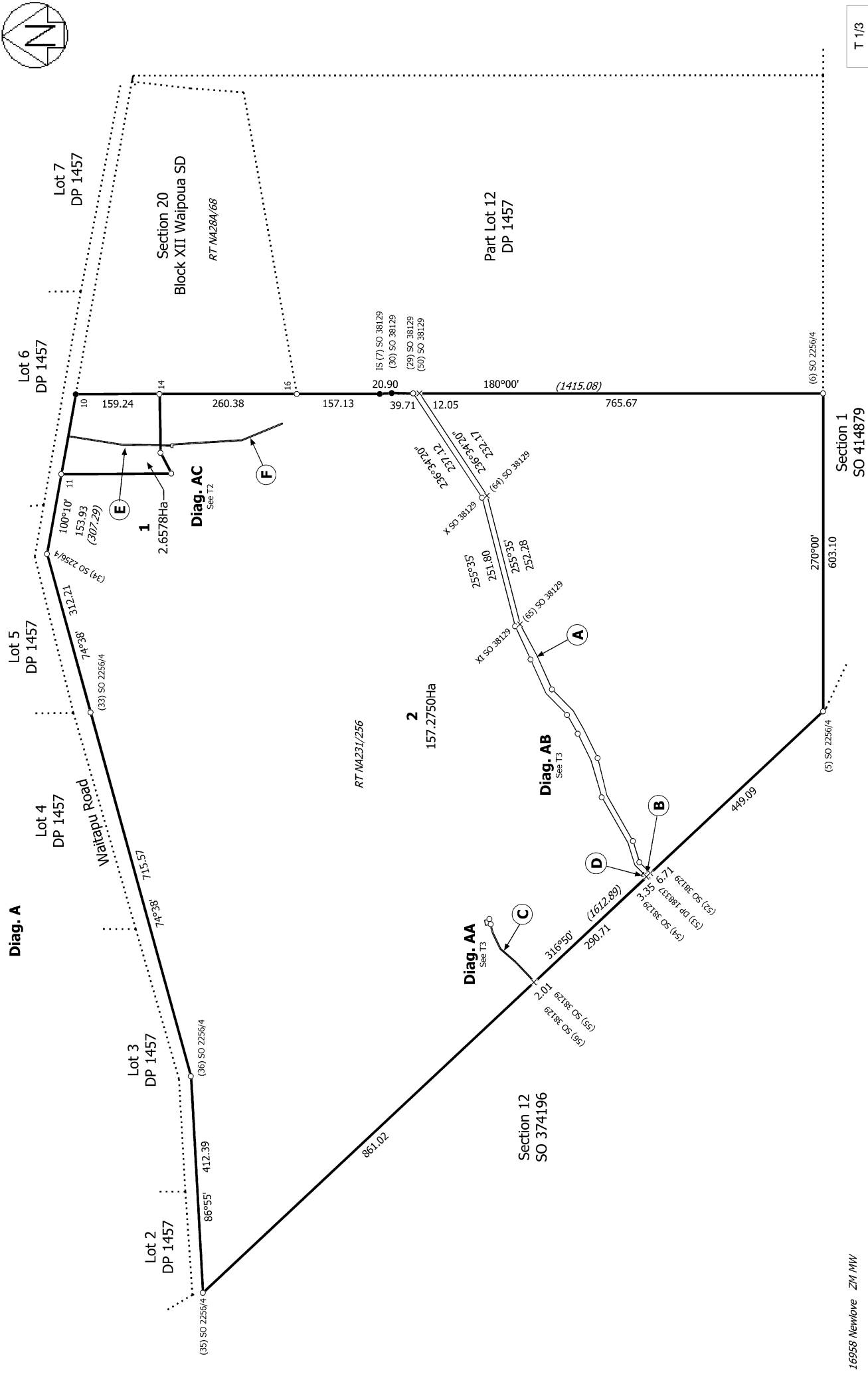
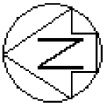
Record of Survey
DP 583331
Deposited on: 18/07/2023



<p>16958 Newlove ZM MW</p> <p>Land District: North Auckland</p> <p>Digitally Generated Plan</p> <p>Generated on: 16/08/2023 11:32am Page 12 of 16</p>	<p>Lots 1 and 2 being a Subdivision of Lots 10 and 11 DP 1457</p>	<p>Surveyor: Phillip John Lash Firm: Reyburn & Bryant 1999 Ltd Date of Survey: 7/11/2022</p>	<p>Record of Survey DP 583331</p> <p>Deposited on: 18/07/2023</p>
--	--	--	--



<p>16958 Newlove ZM MW</p>	<p>Land District: North Auckland</p>	<p>Record of Survey DP 583331</p>
<p>S 3/3</p>	<p>Surveyor: Phillip John Lash Firm: Reyburn & Bryant 1999 Ltd Date of Survey: 7/11/2022</p>	<p>Deposited on: 18/07/2023</p>
<p>Lots 1 and 2 being a Subdivision of Lots 10 and 11 DP 1457</p>		
<p>Digitally Generated Plan Generated on: 16/08/2023 11:32:am Page 13 of 16</p>		



16958 Newlove ZIN MW

Section 1
SO 414879

T 1/3

Land District: North Auckland

Lots 1 and 2 being a Subdivision of Lots 10 and 11 DP 1457

Surveyor: Phillip John Lash
Firm: Reyburn & Bryant 1999 Ltd
Date of Survey: 7/11/2022

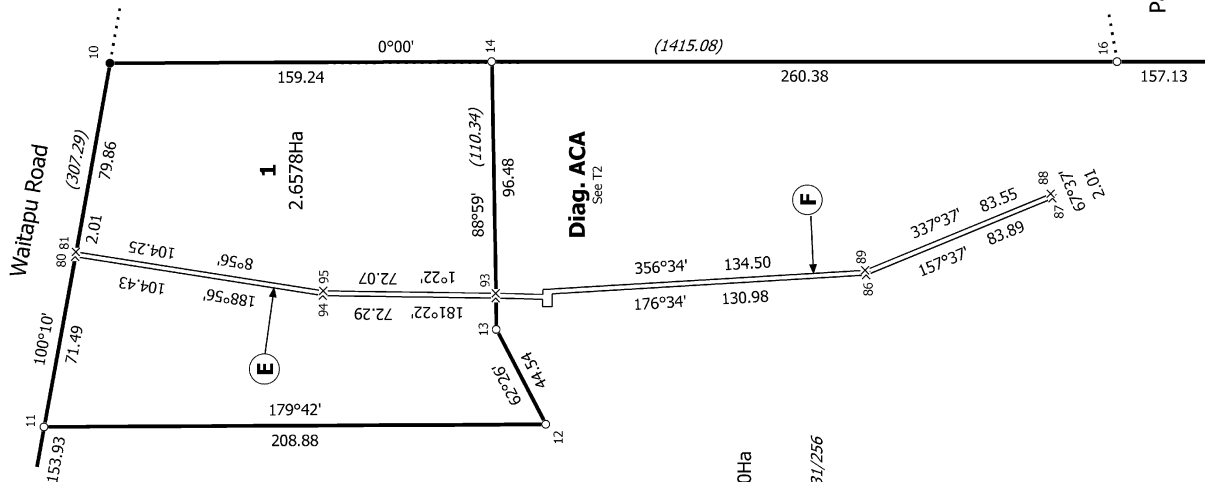
Record of Survey
DP 583331

Digitally Generated Plan
Generated on: 18/08/2023 11:32am | Page 14 of 16

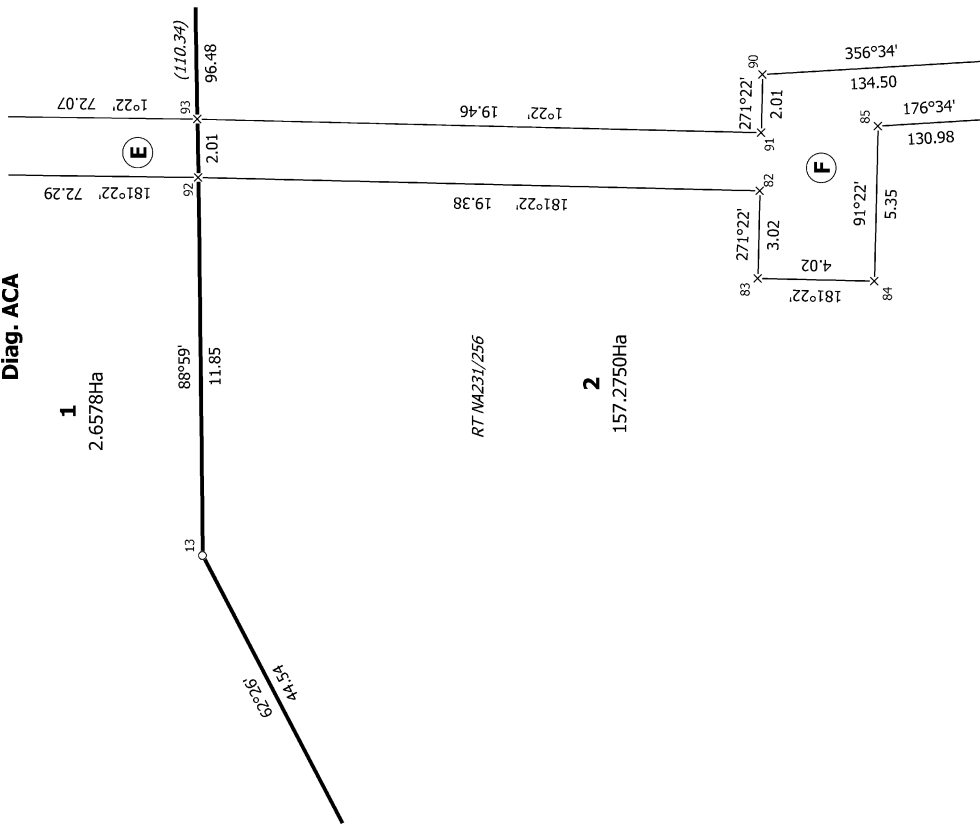
Deposited on: 18/07/2023



Diag. AC



Diag. ACA



Section 20
Block XII Waipoua SD
RT M4284/68

Part Lot 12
DP 1457

2
157.2750Ha
RT M4231/256

Diag. ACA
See T2

16958 Newlove ZM MW

Land District: North Auckland

Digitally Generated Plan

Generated on: 16/08/2023 11:32am | Page 15 of 16

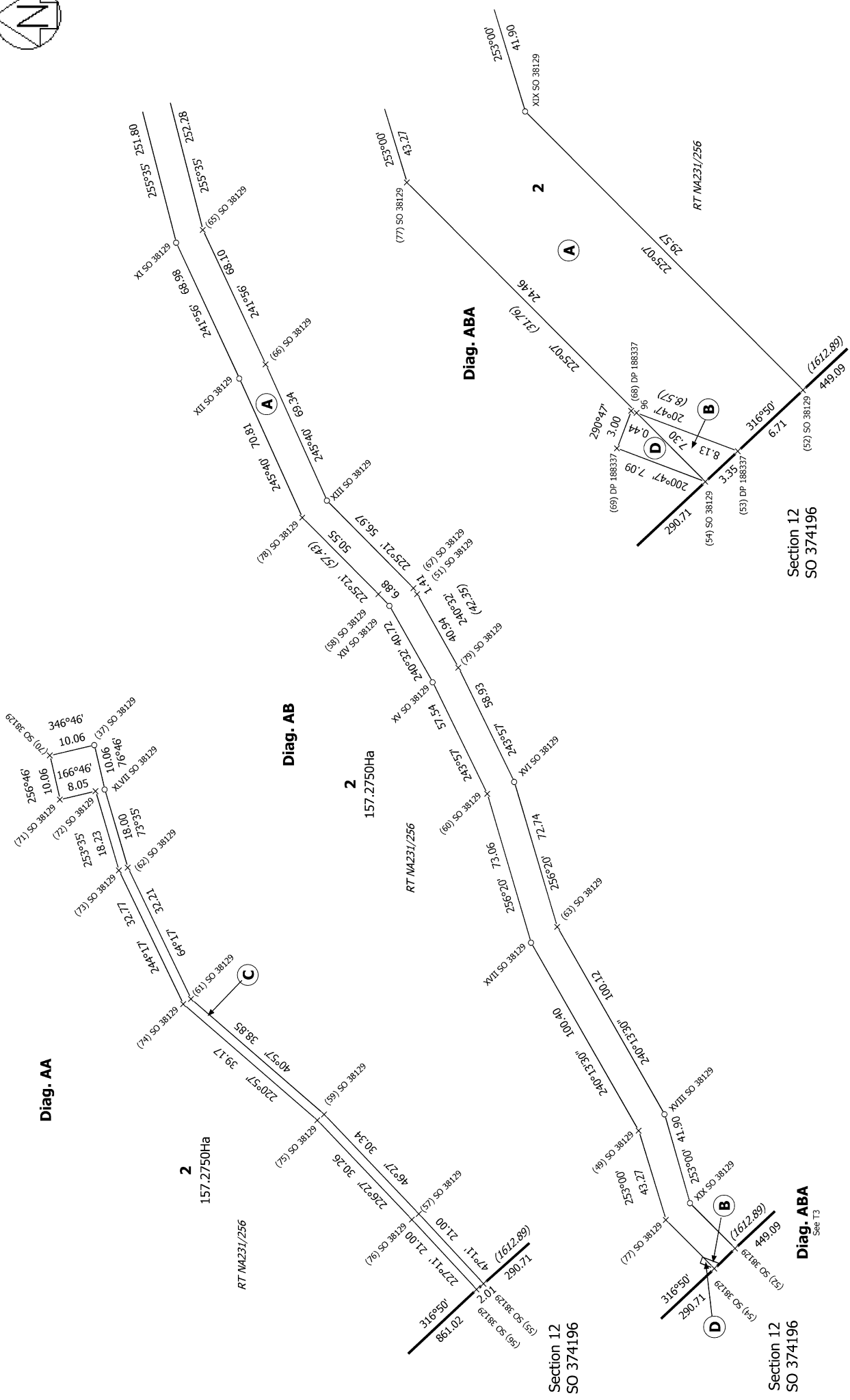
Lots 1 and 2 being a Subdivision of Lots 10 and 11 DP 1457

Surveyor: Phillip John Lash
Firm: Reyburn & Bryant 1999 Ltd
Date of Survey: 7/11/2022

Record of Survey
DP 583331

Deposited on: 18/07/2023

T 2/3



<p>16958 Newlove ZM MW</p>	<p>Land District: North Auckland</p>	<p>Record of Survey DP 583331</p>	<p>Deposited on: 18/07/2023</p>
<p>Section 12 SO 374196</p>	<p>Diag. ABA See T3</p>	<p>Surveyor: Phillip John Lash Firm: Reyburn & Bryant 1999 Ltd Date of Survey: 7/11/2022</p>	<p>Section 12 SO 374196</p>
<p>Section 12 SO 374196</p>	<p>Diag. ABA See T3</p>	<p>Diag. ABA See T3</p>	<p>Section 12 SO 374196</p>
<p>Section 12 SO 374196</p>	<p>Diag. ABA See T3</p>	<p>Diag. ABA See T3</p>	<p>Section 12 SO 374196</p>