

Record of Survey - DP 582661

Survey Number DP 582661
Surveyor Reference Job 1763
Surveyor Peter Lewis Newbury
Survey Firm Planscapes (NZ) Limited (Nelson)
Surveyor Declaration I Peter Lewis Newbury, being a licensed cadastral surveyor, certify that--
 (a) this dataset provided by me and its related survey are accurate, correct and in accordance with the Cadastral Survey Act 2002 and Cadastral Survey Rules 2021; and
 (b) the survey was undertaken by me or under my personal direction.
 Declared on 27 Nov 2023 03:31 PM

Survey Details

Dataset Description Lots 1-3 Being Subdivision of Lot 4 DP 550497 and Section 22 SO 11962
Purpose LT Subdivision
Status Deposited **Type** Survey
Land District Nelson **Survey Class** Class B
Meridional Circuit Grey 2000 **Vertical Datum** None

Survey Dates

Surveyed Date 29/10/2022 **Certified Date** 27/11/2023
Submitted Date 27/11/2023 15:31:28 **Survey Approval Date** 28/11/2023
Deposit Date 27/10/2023

Referenced Surveys

Survey Number	Land District	Bearing Correction
SO 11962	Nelson	
DP 18412	Nelson	0°00'00"
SO 6988	Nelson	-0°03'00"
SO 7035	Nelson	-0°03'00"
SO 8567	Nelson	-0°03'00"
DP 16282	Nelson	0°00'00"
DP 18593	Nelson	0°00'00"
DP 416144	Nelson	0°00'00"
DP 550497	Nelson	0°00'00"

Territorial Authorities

Tasman District

Comprised In

RT 948936

Created Parcels

Parcels	Parcel Intent	Area	RT Reference
Lot 1 Deposited Plan 582661	Fee Simple Title	277.6860 Ha	1091070
Lot 2 Deposited Plan 582661	Fee Simple Title	74.0925 Ha	1091071
Lot 3 Deposited Plan 582661	Fee Simple Title	64.3170 Ha	1091072



Record of Survey - DP 582661

Created Parcels

Parcels	Parcel Intent	Area	RT Reference
Area B Deposited Plan 582661	Easement		
Area D Deposited Plan 582661	Easement		
Area E Deposited Plan 582661	Easement		
Esplanade Strip F Deposited Plan 582661	Esplanade Strip		
Total Area		<hr/> 416.0955 Ha	

Mark and Vector

Survey Number DP 582661

Meridional Circuit Grey 2000

From	To	Code	Bearing	Adpt Surv	Bearing Correction	Distance	Adpt Surv	Class
IT V DP 416144	IS 3 DP 550497	ob0	189°29'16"	A DP 550497	0°00'00"	699.34 A	DP 550497	
IS 3 DP 550497	IT VIII DP 416144	ob1	346°33'40"	A DP 550497	0°00'00"	712.19 A	DP 550497	
IT VIII DP 416144	IS IX DP 416144	ob5	110°36'20"	A DP 416144	0°00'00"	152.32 A	DP 416144	
IS IX DP 416144	IT V DP 416144	ob7	69°51'50"	A DP 416144	0°00'00"	147.21 A	DP 416144	
IS 3 DP 550497	IT IX DP 18593	ob2	148°30'43"	A DP 550497	0°00'00"	397.99 A	DP 550497	
IT IX DP 18593	IT XI DP 416144	ob8	245°02'40"	M		530.80 M		
IT XI DP 416144	IS 3 DP 550497	ob12	25°53'05"	A DP 550497	0°00'00"	626.16 A	DP 550497	
IT XI DP 416144	IT III DP 416144	ob13	337°40'40"	M		422.62 M		
IT III DP 416144	IS 3 DP 550497	ob18	68°19'49"	A DP 550497	0°00'00"	466.86 A	DP 550497	
IT IX DP 18593	IS 100 DP 582661	ob9	209°59'53"	M		1,518.60 M		
IS 100 DP 582661	IT III DP 416144	ob22	4°31'57"	M		1,486.82 M		
IS 100 DP 582661	IT XI DP 416144	ob23	14°17'38"	M		1,126.08 M		
IT XI DP 416144	IS 200 DP 582661	ob14	152°56'07"	M		789.39 M		
IS 200 DP 582661	IS 100 DP 582661	ob26	238°38'40"	M		746.17 M		
IS 200 DP 582661	IS 5 DP 582661	ob27	279°19'08"	M		928.93 M		
IS 5 DP 582661	IT XI DP 416144	ob36	45°15'23"	M		784.91 M		
IS 5 DP 582661	IS 100 DP 582661	ob37	152°34'45"	M		606.87 M		
IS 100 DP 582661	IS 4 DP 582661	ob24	279°27'05"	M		300.28 M		
IS 4 DP 582661	IS 5 DP 582661	ob40	1°57'30"	M		489.67 M		
IS 200 DP 582661	IS 2 DP 582661	ob28	196°38'43"	M		2,200.04 M		
IS 2 DP 582661	IS 100 DP 582661	ob44	359°46'00"	M		1,719.60 M		
IS 100 DP 582661	IT V DP 16282	ob25	155°30'09"	M		1,253.41 M		
IT V DP 16282	IS 2 DP 582661	ob50	221°31'35"	M		773.40 M		
IS 2 DP 582661	IS 3 DP 582661	ob45	327°09'25"	M		1,076.76 M		
IS 3 DP 582661	IS 100 DP 582661	ob54	35°17'55"	M		998.50 M		
IT V DP 16282	IS 3 DP 582661	ob51	286°32'17"	M		1,144.03 M		
IT V DP 16282	IB XXVI DP 18593	ob52	178°58'45"	M		623.35 M		
IB XXVI DP 18593	IS 2 DP 582661	ob58	274°49'40"	M		525.71 M		
IT V DP 16282	IB XXII DP 18593	ob53	161°44'40"	M		542.49 M		

Mark and Vector

Survey Number DP 582661

Meridional Circuit Grey 2000

From	To	Code	Bearing	Adpt Surv	Bearing Correction	Distance	Adpt Surv	Class
IB XXII DP 18593	IB XXVI DP 18593	ob61	235°46'00"	M		192.10 M		
IS 2 DP 582661	IS 6 DP 582661	ob46	276°31'20"	M		77.03 M		
IS 6 DP 582661	IS 4 DP 582661	ob62	352°39'42"	M		1,774.68 M		
IS 200 DP 582661	IS 7 DP 582661	ob29	295°41'13"	M		1,480.53 M		
IS 7 DP 582661	IT XI DP 416144	ob226	86°24'30"	M		976.97 M		
IT VIII DP 416144	PEG II SO 6726	ob6	272°43'00"	A DP 416144	0°00'00"	104.75 A DP 416144		
PEG II SO 6726	IR I DP 18412	ob63	254°06'20"	A DP 18412	0°00'00"	136.90 A DP 18412		
IR I DP 18412	XVI (Tutaki SD)	ob64	137°18'20"	A DP 18412	0°00'00"	656.44 A DP 18412		
XVI (Tutaki SD)	IT V DP 416144	ob65	8°00'00"	A DP 416144	0°00'00"	517.10 A DP 416144		
IS 3 DP 550497	IS 2 DP 550497	ob3	265°49'00"	A DP 550497	0°00'00"	1,732.85 A DP 550497		
IS 2 DP 550497	3262	ob67	117°13'15"	A DP 550497	0°00'00"	1,320.07 A DP 550497		
3262	IS 3 DP 550497	ob69	37°12'14"	A DP 550497	0°00'00"	916.83 A DP 550497		
IS 3 DP 550497	XII (Tutaki SD)	ob4	233°28'01"	A DP 550497	0°00'00"	2,024.95 A DP 550497		
XII (Tutaki SD)	3262	ob70	66°06'29"	A DP 550497	0°00'00"	1,173.25 A DP 550497		
IT XI DP 416144	IS X DP 416144	ob15	325°52'40"	A DP 416144	0°00'00"	247.42 A DP 416144		
IS X DP 416144	IT III DP 416144	ob73	353°20'40"	A DP 416144	0°00'00"	187.39 A DP 416144		
IT IX DP 18593	IB VIII DP 18593	ob10	199°20'35"	A DP 18593	0°00'00"	371.02 A DP 18593		
IB VIII DP 18593	IT VII DP 18593	ob84	188°49'10"	A DP 18593	0°00'00"	158.81 A DP 18593		
IT VII DP 18593	IT VI DP 18593	ob85	165°40'25"	A DP 18593	0°00'00"	361.40 A DP 18593		
IT VI DP 18593	IT V DP 18593	ob87	170°41'25"	A DP 18593	0°00'00"	468.18 A DP 18593		
IT V DP 18593	IB III DP 18593	ob89	154°02'40"	A DP 18593	0°00'00"	254.70 A DP 18593		
IB III DP 18593	IT II DP 18593	ob90	199°46'30"	A DP 18593	0°00'00"	114.26 A DP 18593		
IT II DP 18593	IB I DP 18593	ob91	194°31'15"	A DP 18593	0°00'00"	448.15 A DP 18593		
IB I DP 18593	IT III DP 16282	ob92	203°48'20"	A DP 18593	0°00'00"	168.79 A DP 18593		
IT III DP 16282	IT V DP 16282	ob94	215°14'00"	A DP 18593	0°00'00"	259.31 A DP 18593		
IT IX DP 18593	PEG 8 DP 416144	ob11	226°02'00"	A DP 416144	0°00'00"	20.49 A DP 416144		
PEG 8 DP 416144	PEG (2) SO 6988	ob74	18°12'00"	A DP 416144	0°00'00"	11.42 A DP 416144		
PEG (2) SO 6988	PEG XVII SO 6988	ob75	90°21'30"	A DP 416144	0°00'00"	10.565 C		
PEG (6) SO 6988	PEG (1) DP 18593	ob76	198°12'00"	A DP 18593	0°00'00"	4.10 A DP 18593		
PEG (1) DP 18593	IT IX DP 18593	ob77	310°28'00"	A DP 18593	0°00'00"	11.40 A DP 18593		
IT III DP 416144	IS IV DP 416144	ob19	38°52'10"	A DP 416144	0°00'00"	220.19 A DP 416144		
IS IV DP 416144	IS VI DP 416144	ob126	339°35'40"	A DP 416144	0°00'00"	119.29 A DP 416144		
IS VI DP 416144	IT VII DP 416144	ob127	18°55'40"	A DP 416144	0°00'00"	421.90 A DP 416144		

Mark and Vector

Survey Number DP 582661

Meridional Circuit Grey 2000

From	To	Code	Bearing	Adpt Surv	Bearing Correction	Distance	Adpt Surv	Class
IT VII DP 416144	IT VIII DP 416144	ob128	10°49'10"	A DP 416144	0°00'00"	186.05	A DP 416144	
IT III DP 416144	PEG 1 DP 550497	ob20	199°43'40"	A DP 550497	0°00'00"	237.16	A DP 550497	
IT III DP 416144	PEG 2 DP 550497	ob21	176°15'00"	A DP 550497	0°00'00"	189.01	A DP 550497	
PEG 1 DP 550497	UNMK 104 DP 550497	ob129	69°26'50"	A DP 550497	0°00'00"	2.54	A DP 550497	Class B
UNMK 104 DP 550497	UNMK 1 DP 550497	ob131	69°26'50"	A DP 550497	0°00'00"	6.94	A DP 550497	Class B
UNMK 1 DP 550497	PEG 2 DP 550497	ob132	69°26'50"	A DP 550497	0°00'00"	89.21	A DP 550497	Class B
PEG 2 DP 550497	UNMK 100 DP 550497	ob130	69°26'50"	A DP 550497	0°00'00"	0.72	A DP 550497	Class BD
UNMK 100 DP 550497	UNMK 5 DP 550497	ob134	69°26'50"	A DP 550497	0°00'00"	5.09	A DP 550497	Class BD
UNMK 5 DP 550497	IS X DP 416144	ob135	83°30'00"	A DP 550497	0°00'00"	3.95	A DP 550497	
IS 2 DP 550497	IS 1 DP 550497	ob68	205°20'00"	A DP 550497	0°00'00"	1.96	A DP 550497	
IS 1 DP 550497	XII (Tutaki SD)	ob136	174°35'30"	C		1,082.05	A DP 550497	Class B
IB XXVI DP 18593	IB XXV DP 18593	ob59	131°22'00"	A DP 18593	0°00'00"	43.02	A DP 18593	
IB XXV DP 18593	IB XXIII DP 18593	ob138	75°55'40"	A DP 18593	0°00'00"	189.69	A DP 18593	
IB XXIII DP 18593	IB XXII DP 18593	ob139	327°32'50"	A DP 18593	0°00'00"	107.10	A DP 18593	
IB XXVI DP 18593	IP XXXA SO 8567	ob60	70°53'30"	A DP 18593	0°00'00"	53.24	A DP 18593	
IP XXXA SO 8567	IB XXV DP 18593	ob140	201°27'20"	A DP 18593	0°00'00"	49.28	A DP 18593	
IB I DP 18593	IT II DP 16282	ob93	258°52'00"	A DP 18593	0°00'00"	29.10	A DP 18593	
IT II DP 16282	IT IV DP 16282	ob142	222°53'20"	A DP 16282	0°00'00"	102.45	A DP 16282	
IT IV DP 16282	IT III DP 16282	ob144	157°46'10"	A DP 18593	0°00'00"	79.67	A DP 18593	
IT II DP 16282	PEG (1) DP 16282	ob143	50°18'00"	A DP 16282	0°00'00"	32.58	A DP 16282	
IT III DP 16282	PEG (2) DP 16282	ob95	229°25'00"	A DP 16282	0°00'00"	14.69	A DP 16282	
PEG (2) DP 16282	PEG (1) DP 16282	ob146	22°56'00"	A SO 7035	-0°03'00"	194.57	A DP 16282	
PEG (1) DP 16282	PEG (116) SO 7035	ob145	22°56'00"	A SO 7035	-0°03'00"	4.64	A DP 16282	
PEG (116) SO 7035	PEG XXVIII(A) SO 7035	ob147	103°12'40"	A DP 18412	0°00'00"	10.21	A DP 16282	
IT VII DP 18593	D1 (Tutaki SD)	ob86	77°47'20"	A DP 18593	0°00'00"	38.61	A DP 18593	
XVI (Tutaki SD)	PEG XVII SO 6988	ob66	162°31'00"	A SO 7035	-0°03'00"	545.77	A SO 7035	

Mark and Vector

Survey Number DP 582661

Meridional Circuit Grey 2000

From	To	Code	Bearing	Adpt Surv	Bearing Correction	Distance	Adpt Surv	Class
PEG XVII SO 6988	PEG XVIII SO 6988	ob154	198°12'00"	A SO 7035	-0°03'00"	289.10	A SO 7035	
PEG XVIII SO 6988	PEG XIX SO 6988	ob155	196°15'00"	A SO 7035	-0°03'00"	91.37	A SO 7035	
PEG XIX SO 6988	PEG XX SO 6988	ob156	192°32'00"	A SO 7035	-0°03'00"	118.37	A SO 7035	
PEG XX SO 6988	PEG (4) SO 6988	ob157	95°06'00"	A SO 6988	-0°03'00"	10.14	A SO 6988	
PEG (4) SO 6988	D1 (Tutaki SD)	ob159	126°20'00"	A SO 6988	-0°03'00"	28.04	A SO 6988	
PEG XX SO 6988	PEG XXI SO 6988	ob158	177°40'00"	A SO 7035	-0°03'00"	56.43	A SO 7035	
PEG XXI SO 6988	PEG XXII(A) SO 7035	ob160	165°21'00"	A SO 7035	-0°03'00"	317.50	A SO 7035	
PEG XXII(A) SO 7035	PEG XXIII(A) SO 7035	ob161	170°30'00"	A SO 7035	-0°03'00"	468.16	A SO 7035	
PEG XXIII(A) SO 7035	PEG XXIV(A) SO 7035	ob163	155°45'00"	A SO 7035	-0°03'00"	123.54	A SO 7035	
PEG XXIV(A) SO 7035	PEG XXV(A) SO 7035	ob164	149°04'00"	A SO 7035	-0°03'00"	83.95	A SO 7035	
PEG XXV(A) SO 7035	PEG XXVI(A) SO 7035	ob165	172°10'00"	A SO 7035	-0°03'00"	99.70	A SO 7035	
PEG XXVI(A) SO 7035	PEG XXVII(A) SO 7035	ob166	202°58'30"	A SO 7035	-0°03'00"	325.95	A SO 7035	
PEG XXVII(A) SO 7035	PEG XXVIII(A) SO 7035	ob167	183°29'30"	A SO 7035	-0°03'00"	183.14	A SO 7035	
IP XXXA SO 8567	PEG XXXI(A) SO 7035	ob141	181°21'00"	A SO 7035	-0°03'00"	206.98	A SO 7035	
PEG XXVIII(A) SO 7035	PEG XXIX(A) SO 7035	ob148	202°56'00"	A SO 7035	-0°03'00"	267.57	A SO 7035	
PEG XXIX(A) SO 7035	IS XXX(A) SO 8567	ob168	190°51'00"	A SO 7035	-0°03'00"	258.14	A SO 7035	
IS XXX(A) SO 8567	IS I SO 8567	ob170	181°21'00"	A SO 8567	-0°03'00"	121.32	A SO 8567	
IS I SO 8567	IP XXXA SO 8567	ob172	181°21'00"	A SO 8567	-0°03'00"	368.30	A SO 8567	
IS I SO 8567	PEG II DP 8567	ob173	173°35'00"	A SO 8567	-0°03'00"	170.09	A SO 8567	
PEG II DP 8567	PEG III DP 8567	ob149	160°19'00"	A SO 8567	-0°03'00"	72.20	A SO 8567	
PEG III DP 8567	PEG IV DP 8567	ob150	134°09'00"	A SO 8567	-0°03'00"	119.35	A SO 8567	
PEG IV DP 8567	PEG V DP 8567	ob151	186°04'00"	A SO 8567	-0°03'00"	52.44	A SO 8567	
PEG V DP 8567	IP XXXA SO 8567	ob152	271°49'00"	A SO 8567	-0°03'00"	132.13	A SO 8567	
IT VI DP 18593	POST (1) DP 18593	ob88	95°27'00"	A DP 18593	0°00'00"	10.69	A DP 18593	
POST (1) DP 18593	PEG (1) SO 7035	ob176	350°30'00"	A DP 18593	0°00'00"	15.73	A DP 18593	
PEG (1) SO 7035	PEG XXII(A) SO 7035	ob177	257°55'30"	C		10.07	C	

Mark and Vector

Survey Number DP 582661

Meridional Circuit Grey 2000

From	To	Code	Bearing	Adpt Surv	Bearing Correction	Distance	Adpt Surv	Class
PEG XXII(A) SO 7035	PEG (4) SO 7035	ob162	257°55'30"	C		10.07	C	
PEG (4) SO 7035	PEG (3) SO 7035	ob81	345°21'00"	A SO 7035	-0°03'00"	7.36	A SO 7035	
PEG (3) SO 7035	PEG (10) SO 6988	ob82	345°21'00"	A SO 7035	-0°03'00"	310.78	A SO 7035	
PEG (10) SO 6988	PEG XXI SO 6988	ob83	81°30'30"	C		10.12	C	
XII (Tutaki SD)	PEG XXX SO 7035	ob71	126°08'00"	A SO 7035	-0°02'00"	42.75	A SO 7035	Class B
PEG XXX SO 7035	PEG XXIX SO 7035	ob78	101°43'00"	A SO 7035	-0°02'00"	41.16	A SO 7035	Class B
PEG XXIX SO 7035	PEG XXVIII SO 7035	ob79	105°13'00"	A SO 7035	-0°02'00"	24.90	A SO 7035	Class B
PEG XXVIII SO 7035	PEG XXVII SO 7035	ob80	113°05'00"	A SO 7035	-0°02'00"	31.56	A SO 7035	Class B
PEG XXVII SO 7035	PEG XXVI SO 7035	ob96	101°32'00"	A SO 7035	-0°02'00"	35.47	A SO 7035	Class B
PEG XXVI SO 7035	PEG XXV SO 7035	ob97	115°36'00"	A SO 7035	-0°02'00"	46.55	A SO 7035	Class B
PEG XXV SO 7035	PEG XXIV SO 7035	ob98	101°49'00"	A SO 7035	-0°02'00"	34.12	A SO 7035	Class B
PEG XXIV SO 7035	PEG XXIII SO 7035	ob99	127°58'00"	A SO 7035	-0°02'00"	80.02	A SO 7035	Class B
PEG XXIII SO 7035	PEG XXII SO 7035	ob100	140°07'00"	A SO 7035	-0°02'00"	49.19	A SO 7035	Class B
PEG XXII SO 7035	PEG XXI SO 7035	ob101	109°28'00"	A SO 7035	-0°02'00"	31.10	A SO 7035	Class B
PEG XXI SO 7035	PEG XX SO 7035	ob102	102°29'00"	A SO 7035	-0°02'00"	35.08	A SO 7035	Class B
PEG XX SO 7035	PEG XIX SO 7035	ob103	79°35'00"	A SO 7035	-0°02'00"	36.23	A SO 7035	Class B
PEG XIX SO 7035	PEG XVIII SO 7035	ob104	90°24'00"	A SO 7035	-0°02'00"	42.65	A SO 7035	Class B
PEG XVIII SO 7035	PEG XVII SO 7035	ob106	79°48'00"	A SO 7035	-0°02'00"	20.92	A SO 7035	Class B
PEG XVII SO 7035	PEG XVI SO 7035	ob107	60°53'00"	A SO 7035	-0°02'00"	47.11	A SO 7035	Class B
PEG XVI SO 7035	PEG XV SO 7035	ob108	81°50'00"	A SO 7035	-0°02'00"	42.14	A SO 7035	Class B
PEG XV SO 7035	PEG XIV SO 7035	ob109	106°28'00"	A SO 7035	-0°02'00"	79.04	A SO 7035	Class B
PEG XIV SO 7035	PEG XIII SO 7035	ob110	92°34'00"	A SO 7035	-0°02'00"	29.61	A SO 7035	Class B
PEG XIII SO 7035	PEG XII SO 7035	ob111	54°21'00"	A SO 7035	-0°02'00"	61.16	A SO 7035	Class B
PEG XII SO 7035	PEG XI SO 7035	ob112	57°31'00"	A SO 7035	-0°02'00"	47.78	A SO 7035	
PEG XI SO 7035	PEG X SO 7035	ob113	52°19'00"	A SO 7035	-0°02'00"	28.67	A SO 7035	

Mark and Vector

Survey Number DP 582661

Meridional Circuit Grey 2000

From	To	Code	Bearing	Adpt Surv	Bearing Correction	Distance	Adpt Surv	Class
PEG X SO 7035	PEG IX SO 7035	ob114	50°41'00"	A SO 7035	-0°02'00"	68.30 A	SO 7035	
PEG IX SO 7035	PEG VIII SO 7035	ob115	100°30'00"	A SO 7035	-0°02'00"	84.61 A	SO 7035	
PEG VIII SO 7035	PEG VII SO 7035	ob116	78°25'00"	A SO 7035	-0°02'00"	53.29 A	SO 7035	
PEG VII SO 7035	PEG VI SO 7035	ob117	68°33'00"	A SO 7035	-0°02'00"	113.02 A	SO 7035	
PEG VI SO 7035	PEG V SO 7035	ob118	73°01'00"	A SO 7035	-0°02'00"	105.13 A	SO 7035	
PEG V SO 7035	PEG IV SO 7035	ob119	61°41'00"	A SO 7035	-0°02'00"	105.55 A	SO 7035	
PEG IV SO 7035	PEG III SO 7035	ob120	61°11'00"	A SO 7035	-0°02'00"	121.30 A	SO 7035	
PEG III SO 7035	UNMK 101 DP 550497	ob121	80°00'00"	A SO 7035	-0°02'00"	69.76 A	DP 550497	
UNMK 101 DP 550497	UNMK 22 DP 416144	ob122	80°00'00"	A SO 7035	-0°02'00"	5.00 A	DP 550497	Class BD
UNMK 22 DP 416144	UNMK (4) SO 11962	ob123	80°00'00"	A SO 7035	-0°02'00"	3.85 A	DP 416144	Class BD
UNMK (4) SO 11962	PEG I SO 7035	ob124	80°00'00"	A SO 7035	-0°02'00"	30.60 C		
PEG I SO 7035	PEG (3) SO 7035	ob125	113°08'30"	A SO 7035	-0°02'00"	290.37 A	SO 7035	
IS 200 DP 582661	PEG 1 DP 550497	ob30	325°26'25"	M		1,057.23 M		
PEG XXIX(A) SO 7035	PEG (146) SO 7035	ob169	286°53'30"	C		10.11 C		
PEG (146) SO 7035	PEG (2) DP 16282	ob178	22°56'00"	A SO 7035	-0°03'00"	67.70 A	DP 16282	
IS XXX(A) SO 8567	PEG (147) SO 7035	ob171	276°06'00"	C		10.09 C		
PEG (147) SO 7035	PEG (146) SO 7035	ob179	10°51'00"	A SO 7035	-0°03'00"	260.05 A	SO 7035	
PEG XXXI(A) SO 7035	PEG (148) SO 7035	ob174	276°02'00"	A SO 7035	-0°03'00"	10.10 A	SO 7035	
PEG (148) SO 7035	PEG (149) SO 7035	ob180	181°21'00"	A SO 7035	-0°03'00"	2.43 A	SO 7035	
PEG (149) SO 7035	PEG XXXI(A) SO 7035	ob183	82°15'30"	C		10.18 A	SO 8567	
PEG (148) SO 7035	PEG (147) SO 7035	ob181	1°21'00"	A SO 7035	-0°03'00"	696.62 A	SO 7035	
PEG (148) SO 7035	PEG I(B) SO 7035	ob182	276°02'00"	A SO 7035	-0°03'00"	89.10 A	SO 7035	
PEG I(B) SO 7035	PEG II(B) SO 7035	ob185	267°20'00"	A SO 7035	-0°03'00"	37.54 A	SO 7035	
PEG II(B) SO 7035	PEG III(B) SO 7035	ob186	273°19'00"	A SO 7035	-0°03'00"	101.43 A	SO 7035	
PEG III(B) SO 7035	PEG IV(B) SO 7035	ob187	286°27'00"	A SO 7035	-0°03'00"	45.40 A	SO 7035	
PEG IV(B) SO 7035	PEG V(B) SO 7035	ob188	276°37'00"	A SO 7035	-0°03'00"	69.12 A	SO 7035	

Mark and Vector

Survey Number DP 582661

Meridional Circuit Grey 2000

From	To	Code	Bearing	Adpt Surv	Bearing Correction	Distance	Adpt Surv	Class
PEG V(B) SO 7035	PEG VI(B) SO 7035	ob189	266°35'00"	A SO 7035	-0°03'00"	31.16 A	SO 7035	
PEG VI(B) SO 7035	PEG VII(B) SO 7035	ob190	269°10'00"	A SO 7035	-0°03'00"	158.58 A	SO 7035	
PEG VII(B) SO 7035	PEG VIII(B) SO 7035	ob191	257°38'00"	A SO 7035	-0°03'00"	49.65 A	SO 7035	
PEG VIII(B) SO 7035	PEG IX(B) SO 7035	ob192	274°07'00"	A SO 7035	-0°03'00"	112.88 A	SO 7035	
PEG IX(B) SO 7035	PEG X(B) SO 7035	ob193	281°02'00"	A SO 7035	-0°03'00"	118.45 A	SO 7035	
PEG X(B) SO 7035	PEG XI(B) SO 7035	ob194	255°17'00"	A SO 7035	-0°03'00"	85.62 A	SO 7035	
PEG XI(B) SO 7035	PEG XII(B) SO 7035	ob195	242°05'00"	A SO 7035	-0°03'00"	26.19 A	SO 7035	
PEG XII(B) SO 7035	PEG XIII(B) SO 7035	ob196	281°29'00"	A SO 7035	-0°03'00"	106.68 A	SO 7035	
PEG XIII(B) SO 7035	PEG XIV(B) SO 7035	ob197	292°45'00"	A SO 7035	-0°03'00"	54.76 A	SO 7035	
PEG XIV(B) SO 7035	XIII (Tutaki SD)	ob198	281°54'00"	A SO 7035	-0°03'00"	62.60 A	SO 7035	
XIII (Tutaki SD)	PEG (147) SO 7035	ob199	61°23'40"	C		1,304.79 C		
XII (Tutaki SD)	XIII (Tutaki SD)	ob72	167°35'00"	C		2,385.60 C		Class B
IT XI DP 416144	UNMK 57 DP 550497	ob16	109°59'12"	A DP 550497	0°00'00"	52.97 A	DP 550497	
UNMK 57 DP 550497	UNMK 71 DP 550497	ob207	226°49'00"	A DP 550497	0°00'00"	17.95 A	DP 550497	Class BD
UNMK 71 DP 550497	UNMK 70 DP 550497	ob208	244°22'00"	A DP 550497	0°00'00"	11.74 A	DP 550497	Class B
UNMK 70 DP 550497	UNMK 69 DP 550497	ob209	282°46'00"	A DP 550497	0°00'00"	7.75 A	DP 550497	Class B
UNMK 69 DP 550497	UNMK 68 DP 550497	ob210	305°52'30"	A DP 550497	0°00'00"	69.98 A	DP 550497	Class B
UNMK 68 DP 550497	UNMK 93 DP 550497	ob211	284°20'00"	A DP 550497	0°00'00"	33.44 A	DP 550497	Class B
UNMK 93 DP 550497	UNMK 66 DP 550497	ob212	290°56'00"	A DP 550497	0°00'00"	42.40 A	DP 550497	Class B
UNMK 66 DP 550497	UNMK 64 DP 550497	ob213	316°59'00"	A DP 550497	0°00'00"	34.28 A	DP 550497	Class B
UNMK 64 DP 550497	UNMK 90 DP 550497	ob214	292°02'00"	A DP 550497	0°00'00"	24.59 A	DP 550497	Class B
UNMK 90 DP 550497	UNMK 62 DP 550497	ob215	337°04'00"	A DP 550497	0°00'00"	20.01 A	DP 550497	Class B
UNMK 62 DP 550497	UNMK 103 DP 550497	ob201	329°38'00"	A DP 550497	0°00'00"	46.99 A	DP 550497	Class B
UNMK 103 DP 550497	UNMK 60 DP 550497	ob202	316°55'00"	A DP 550497	0°00'00"	15.66 A	DP 550497	Class B

Mark and Vector

Survey Number DP 582661

Meridional Circuit Grey 2000

From	To	Code	Bearing	Adpt Surv	Bearing Correction	Distance	Adpt Surv	Class
UNMK 60 DP 550497	UNMK 36 DP 582661	ob203	306°44'30"	A DP 550497	0°00'00"	13.74 C		Class B
UNMK 36 DP 582661	UNMK 37 DP 582661	ob271	306°44'30"	A DP 550497	0°00'00"	14.43 C		Class B
UNMK 37 DP 582661	UNMK 59 DP 550497	ob272	306°44'30"	A DP 550497	0°00'00"	19.30 C		Class B
UNMK 59 DP 550497	UNMK 104 DP 550497	ob204	342°01'00"	A DP 550497	0°00'00"	5.07 A DP 550497		Class B
UNMK 1 DP 550497	UNMK 35 DP 550497	ob133	177°04'00"	A DP 550497	0°00'00"	3.59 A DP 550497		Class B
UNMK 35 DP 550497	UNMK 36 DP 550497	ob205	126°44'30"	A DP 550497	0°00'00"	46.13 A DP 550497		Class B
UNMK 36 DP 550497	UNMK 37 DP 550497	ob206	137°25'00"	A DP 550497	0°00'00"	17.49 A DP 550497		Class B
UNMK 37 DP 550497	UNMK 38 DP 550497	ob216	149°38'00"	A DP 550497	0°00'00"	47.36 A DP 550497		Class B
UNMK 38 DP 550497	UNMK 91 DP 550497	ob217	157°04'00"	A DP 550497	0°00'00"	17.94 A DP 550497		Class B
UNMK 91 DP 550497	UNMK 92 DP 550497	ob218	112°02'00"	A DP 550497	0°00'00"	29.16 A DP 550497		Class B
UNMK 92 DP 550497	UNMK 39 DP 550497	ob219	141°30'00"	A DP 550497	0°00'00"	29.34 A DP 550497		Class B
UNMK 39 DP 550497	UNMK 94 DP 550497	ob220	107°55'30"	A DP 550497	0°00'00"	79.95 A DP 550497		Class B
UNMK 94 DP 550497	UNMK 40 DP 550497	ob221	127°18'30"	A DP 550497	0°00'00"	64.83 A DP 550497		Class B
UNMK 40 DP 550497	UNMK 41 DP 550497	ob222	76°56'00"	A DP 550497	0°00'00"	12.44 A DP 550497		Class B
UNMK 41 DP 550497	UNMK 71 DP 550497	ob223	145°37'30"	C		6.05 C		
UNMK 41 DP 550497	UNMK 56 DP 550497	ob224	46°49'00"	A DP 550497	0°00'00"	14.59 A DP 550497		Class BD
UNMK 56 DP 550497	UNMK 57 DP 550497	ob225	114°40'00"	C		6.45 C		
IT XI DP 416144	UNMK 41 DP 550497	ob17	127°21'00"	C		41.86 C		
IS 2 DP 582661	PEG 10 DP 582661	ob47	257°17'00"	M		502.96 M		
IS 2 DP 582661	PEG 11 DP 582661	ob48	330°02'25"	M		949.23 M		
IS 2 DP 582661	PEG 12 DP 582661	ob49	323°11'25"	M		1,040.96 M		
IS 3 DP 582661	PEG 13 DP 582661	ob55	222°56'00"	M		66.49 M		
IS 3 DP 582661	PEG 14 DP 582661	ob56	286°11'30"	M		58.60 M		
IS 3 DP 582661	PEG 15 DP 582661	ob57	320°34'10"	M		78.32 M		

Mark and Vector

Survey Number DP 582661

Meridional Circuit Grey 2000

From	To	Code	Bearing	Adpt Surv	Bearing Correction	Distance	Adpt Surv	Class
IS 200 DP 582661	PEG 16 DP 582661	ob31	226°00'00" M			1,175.71 M		
PEG 16 DP 582661	PEG 17 DP 582661	ob241	346°30'20" M			56.18 M		Class B
PEG 17 DP 582661	IS 200 DP 582661	ob242	48°25'00" M			1,148.21 M		
IS 200 DP 582661	PEG 18 DP 582661	ob32	231°54'50" M			1,244.17 M		
PEG 18 DP 582661	PEG 19 DP 582661	ob244	281°15'30" M			270.09 M		Class B
PEG 19 DP 582661	PEG 20 DP 582661	ob245	344°36'00" M			170.15 M		Class B
PEG 20 DP 582661	PEG 21 DP 582661	ob246	351°41'30" M			52.92 M		Class B
PEG 21 DP 582661	IS 200 DP 582661	ob247	68°58'55" M			1,389.43 M		
IS 200 DP 582661	PEG 22 DP 582661	ob33	255°58'50" M			865.73 M		
PEG 22 DP 582661	UNMK 38 DP 582661	ob249	354°12'50" C			11.53 C		Class B
UNMK 38 DP 582661	UNMK 39 DP 582661	ob273	354°12'50" C			10.04 C		Class B
UNMK 39 DP 582661	PEG 23 DP 582661	ob275	354°12'50" C			15.46 C		Class B
PEG 23 DP 582661	PEG 24 DP 582661	ob251	286°41'30" M			105.64 M		Class B
PEG 24 DP 582661	PEG 25 DP 582661	ob252	337°58'10" M			65.20 M		Class B
PEG 25 DP 582661	IS 200 DP 582661	ob253	85°09'30" M			972.79 M		
PEG 22 DP 582661	PEG 23 DP 582661	ob250	354°12'50" M			37.03 M		
IS 7 DP 582661	PEG 28 DP 582661	ob227	112°39'30" M			601.80 M		
IS 7 DP 582661	PEG 27 DP 582661	ob228	120°24'15" M			623.74 M		
IS 7 DP 582661	PEG 26 DP 582661	ob229	176°06'20" M			662.74 M		
IS 7 DP 582661	PEG 29 DP 582661	ob230	233°17'40" M			93.83 M		
IS 7 DP 582661	PEG 30 DP 582661	ob231	310°03'30" M			100.95 M		
IS 7 DP 582661	PEG 31 DP 582661	ob232	345°05'30" M			214.71 M		
IS 7 DP 582661	PEG 32 DP 582661	ob233	356°56'30" M			283.89 M		
IS 200 DP 582661	PEG 26 DP 582661	ob34	269°08'05" M			1,289.35 M		

Mark and Vector

Survey Number DP 582661

Meridional Circuit Grey 2000

From	To	Code	Bearing	Adpt Surv	Bearing Correction	Distance	Adpt Surv	Class
IS 200 DP 582661	PEG 32 DP 582661	ob35	304°26'15"	M		1,636.10 M		
PEG 10 DP 582661	PEG 11 DP 582661	ob235	1°01'05"	C		933.26 C		Class B
PEG 11 DP 582661	PEG 12 DP 582661	ob236	274°13'00"	C		150.07 C		Class B
PEG 12 DP 582661	PEG 13 DP 582661	ob237	346°09'00"	C		23.23 C		Class B
PEG 13 DP 582661	PEG 14 DP 582661	ob238	350°24'30"	C		65.94 C		Class B
PEG 14 DP 582661	PEG 15 DP 582661	ob239	8°25'00"	C		44.63 C		Class B
PEG 15 DP 582661	PEG 16 DP 582661	ob240	52°03'40"	C		530.22 C		Class B
PEG 17 DP 582661	PEG 18 DP 582661	ob243	267°26'30"	C		120.54 C		Class B
PEG 21 DP 582661	PEG 22 DP 582661	ob248	57°43'45"	C		540.54 C		Class B
PEG 25 DP 582661	PEG XII SO 7035	ob254	281°21'00"	C		10.83 C		Class B
PEG XIX SO 7035	PEG 26 DP 582661	ob105	355°34'00"	C		105.04 C		Class B
PEG 26 DP 582661	PEG 27 DP 582661	ob260	54°58'15"	M		601.99 M		Class B
PEG 27 DP 582661	PEG 28 DP 582661	ob258	11°43'00"	C		85.61 C		Class B
PEG 28 DP 582661	PEG 29 DP 582661	ob255	285°34'30"	C		654.61 C		Class B
PEG 29 DP 582661	PEG 30 DP 582661	ob261	359°02'00"	C		121.07 C		Class B
PEG 30 DP 582661	PEG 31 DP 582661	ob262	8°47'10"	C		144.21 C		Class B
PEG 31 DP 582661	PEG 32 DP 582661	ob263	27°48'50"	C		85.93 C		Class B
XIII (Tutaki SD)	UNMK 9 DP 582661	ob200	61°23'40"	C		90.00 C		Class B
UNMK 9 DP 582661	PEG 10 DP 582661	ob265	1°01'05"	C		7.27 C		Class B
IS 1 DP 550497	UNMK 8 DP 582661	ob137	102°24'44"	A	DP 550497	0°00'00"	530.10 C	Class B
UNMK 8 DP 582661	PEG 1 DP 550497	ob267	102°24'44"	A	DP 550497	0°00'00"	714.13 C	Class B
PEG 32 DP 582661	UNMK 8 DP 582661	ob264	27°48'50"	C		111.85 C		Class B
UNMK 9 DP 582661	UNMK (199) SO 11962	ob266	61°23'40"	C		1,090.00 C		Class BD
UNMK (199) SO 11962	PEG (147) SO 7035	ob268	61°23'40"	C		124.79 C		

Mark and Vector

Survey Number DP 582661

Meridional Circuit Grey 2000

From	To	Code	Bearing	Adpt Surv	Bearing Correction	Distance	Adpt Surv	Class
PEG 27 DP 582661	UNMK 34 DP 582661	ob259	54°58'15"	C		17.52 C		Class B
PEG 28 DP 582661	UNMK 35 DP 582661	ob256	101°43'00"	C		12.00 C		
UNMK 34 DP 582661	UNMK 35 DP 582661	ob269	11°43'00"	C		72.86 C		Class B
UNMK 39 DP 582661	UNMK 219 DP 582661	ob276	57°57'00"	C		30.14 C		Class B
UNMK 219 DP 582661	UNMK 220 DP 582661	ob277	42°49'00"	C		9.13 C		Class B
UNMK 220 DP 582661	UNMK 221 DP 582661	ob278	25°04'00"	C		8.60 C		Class B
UNMK 221 DP 582661	UNMK 222 DP 582661	ob279	1°48'00"	C		20.67 C		Class B
UNMK 222 DP 582661	UNMK 223 DP 582661	ob280	25°54'00"	C		20.84 C		Class B
UNMK 223 DP 582661	UNMK 224 DP 582661	ob281	10°44'00"	C		8.71 C		Class B
UNMK 224 DP 582661	UNMK 225 DP 582661	ob282	344°42'00"	C		19.40 C		Class B
UNMK 225 DP 582661	UNMK 226 DP 582661	ob283	341°20'00"	C		15.59 C		Class B
UNMK 226 DP 582661	UNMK 227 DP 582661	ob284	343°47'00"	C		11.43 C		Class B
UNMK 227 DP 582661	UNMK 228 DP 582661	ob285	11°03'00"	C		11.65 C		Class B
UNMK 228 DP 582661	UNMK 229 DP 582661	ob286	19°29'00"	C		9.57 C		Class B
UNMK 229 DP 582661	UNMK 230 DP 582661	ob287	356°18'00"	C		8.64 C		Class B
UNMK 230 DP 582661	UNMK 231 DP 582661	ob288	340°16'00"	C		14.32 C		Class B
UNMK 231 DP 582661	UNMK 232 DP 582661	ob289	8°19'00"	C		11.21 C		Class B
UNMK 232 DP 582661	UNMK 233 DP 582661	ob290	28°46'00"	C		13.66 C		Class B
UNMK 233 DP 582661	UNMK 234 DP 582661	ob291	6°30'00"	C		13.40 C		Class B
UNMK 234 DP 582661	UNMK 235 DP 582661	ob292	351°09'00"	C		19.91 C		Class B
UNMK 235 DP 582661	UNMK 236 DP 582661	ob293	359°02'00"	C		20.09 C		Class B
UNMK 236 DP 582661	UNMK 237 DP 582661	ob294	342°27'00"	C		10.20 C		Class B
UNMK 237 DP 582661	UNMK 238 DP 582661	ob295	1°54'00"	C		11.24 C		Class B
UNMK 238 DP 582661	UNMK 239 DP 582661	ob296	8°03'00"	C		10.32 C		Class B

Mark and Vector

Survey Number DP 582661

Meridional Circuit Grey 2000

From	To	Code	Bearing	Adpt Surv	Bearing Correction	Distance	Adpt Surv	Class
UNMK 239 DP 582661	UNMK 240 DP 582661	ob297	4°33'00"	C		20.73 C		Class B
UNMK 240 DP 582661	UNMK 241 DP 582661	ob298	12°16'00"	C		16.17 C		Class B
UNMK 241 DP 582661	UNMK 242 DP 582661	ob299	22°27'00"	C		10.72 C		Class B
UNMK 242 DP 582661	UNMK 243 DP 582661	ob300	358°46'00"	C		19.36 C		Class B
UNMK 243 DP 582661	UNMK 244 DP 582661	ob301	22°15'00"	C		32.20 C		Class B
UNMK 244 DP 582661	UNMK 245 DP 582661	ob302	44°34'00"	C		12.02 C		Class B
UNMK 245 DP 582661	UNMK 246 DP 582661	ob303	48°42'00"	C		15.08 C		Class B
UNMK 246 DP 582661	UNMK 247 DP 582661	ob304	33°55'00"	C		4.54 C		Class B
UNMK 247 DP 582661	UNMK 248 DP 582661	ob305	7°15'00"	C		3.90 C		Class B
UNMK 248 DP 582661	UNMK 249 DP 582661	ob306	349°33'00"	C		8.35 C		Class B
UNMK 249 DP 582661	UNMK 250 DP 582661	ob307	338°31'00"	C		20.03 C		Class B
UNMK 250 DP 582661	UNMK 251 DP 582661	ob308	347°14'00"	C		18.11 C		Class B
UNMK 251 DP 582661	UNMK 252 DP 582661	ob309	338°47'00"	C		12.95 C		Class B
UNMK 252 DP 582661	UNMK 253 DP 582661	ob310	326°28'00"	C		18.55 C		Class B
UNMK 253 DP 582661	UNMK 254 DP 582661	ob311	333°28'00"	C		14.92 C		Class B
UNMK 254 DP 582661	UNMK 255 DP 582661	ob312	349°39'00"	C		14.27 C		Class B
UNMK 255 DP 582661	UNMK 256 DP 582661	ob313	357°16'00"	C		14.46 C		Class B
UNMK 256 DP 582661	PEG 27 DP 582661	ob314	11°43'00"	C		6.14 C		Class B
UNMK 38 DP 582661	UNMK 257 DP 582661	ob274	57°57'00"	C		35.78 C		Class B
UNMK 257 DP 582661	UNMK 258 DP 582661	ob315	42°49'00"	C		11.73 C		Class B
UNMK 258 DP 582661	UNMK 259 DP 582661	ob316	25°04'00"	C		11.86 C		Class B
UNMK 259 DP 582661	UNMK 260 DP 582661	ob317	1°48'00"	C		20.62 C		Class B
UNMK 260 DP 582661	UNMK 261 DP 582661	ob318	25°54'00"	C		20.11 C		Class B
UNMK 261 DP 582661	UNMK 262 DP 582661	ob319	10°44'00"	C		11.99 C		Class B

Mark and Vector

Survey Number DP 582661

Meridional Circuit Grey 2000

From	To	Code	Bearing	Adpt Surv	Bearing Correction	Distance	Adpt Surv	Class
UNMK 262 DP 582661	UNMK 263 DP 582661	ob320	344°42'00"	C		21.74 C		Class B
UNMK 263 DP 582661	UNMK 264 DP 582661	ob321	341°20'00"	C		15.67 C		Class B
UNMK 264 DP 582661	UNMK 265 DP 582661	ob322	343°47'00"	C		9.05 C		Class B
UNMK 265 DP 582661	UNMK 266 DP 582661	ob323	11°03'00"	C		8.80 C		Class B
UNMK 266 DP 582661	UNMK 267 DP 582661	ob324	19°29'00"	C		10.75 C		Class B
UNMK 267 DP 582661	UNMK 268 DP 582661	ob325	356°18'00"	C		11.75 C		Class B
UNMK 268 DP 582661	UNMK 269 DP 582661	ob326	340°16'00"	C		13.34 C		Class B
UNMK 269 DP 582661	UNMK 270 DP 582661	ob327	8°19'00"	C		7.34 C		Class B
UNMK 270 DP 582661	UNMK 271 DP 582661	ob328	28°46'00"	C		13.80 C		Class B
UNMK 271 DP 582661	UNMK 272 DP 582661	ob329	6°30'00"	C		16.39 C		Class B
UNMK 272 DP 582661	UNMK 273 DP 582661	ob330	351°09'00"	C		20.50 C		Class B
UNMK 273 DP 582661	UNMK 274 DP 582661	ob331	359°02'00"	C		20.78 C		Class B
UNMK 274 DP 582661	UNMK 275 DP 582661	ob332	342°27'00"	C		9.97 C		Class B
UNMK 275 DP 582661	UNMK 276 DP 582661	ob333	1°54'00"	C		9.21 C		Class B
UNMK 276 DP 582661	UNMK 277 DP 582661	ob334	8°03'00"	C		10.11 C		Class B
UNMK 277 DP 582661	UNMK 278 DP 582661	ob335	4°33'00"	C		20.40 C		Class B
UNMK 278 DP 582661	UNMK 279 DP 582661	ob336	12°16'00"	C		14.76 C		Class B
UNMK 279 DP 582661	UNMK 280 DP 582661	ob337	22°27'00"	C		11.80 C		Class B
UNMK 280 DP 582661	UNMK 281 DP 582661	ob338	358°46'00"	C		19.38 C		Class B
UNMK 281 DP 582661	UNMK 282 DP 582661	ob339	22°15'00"	C		28.55 C		Class B
UNMK 282 DP 582661	UNMK 283 DP 582661	ob340	44°34'00"	C		9.92 C		Class B
UNMK 283 DP 582661	UNMK 284 DP 582661	ob341	48°42'00"	C		15.93 C		Class B
UNMK 284 DP 582661	UNMK 285 DP 582661	ob342	33°55'00"	C		7.84 C		Class B
UNMK 285 DP 582661	UNMK 286 DP 582661	ob343	7°15'00"	C		7.43 C		Class B

Mark and Vector

Survey Number DP 582661

Meridional Circuit Grey 2000

From	To	Code	Bearing	Adpt Surv	Bearing Correction	Distance	Adpt Surv	Class
UNMK 286 DP 582661	UNMK 287 DP 582661	ob344	349°33'00"	C		10.61 C		Class B
UNMK 287 DP 582661	UNMK 288 DP 582661	ob345	338°31'00"	C		20.22 C		Class B
UNMK 288 DP 582661	UNMK 289 DP 582661	ob346	347°14'00"	C		18.09 C		Class B
UNMK 289 DP 582661	UNMK 290 DP 582661	ob347	338°47'00"	C		14.58 C		Class B
UNMK 290 DP 582661	UNMK 291 DP 582661	ob348	326°28'00"	C		18.97 C		Class B
UNMK 291 DP 582661	UNMK 292 DP 582661	ob349	333°28'00"	C		13.08 C		Class B
UNMK 292 DP 582661	UNMK 293 DP 582661	ob350	349°39'00"	C		12.39 C		Class B
UNMK 293 DP 582661	UNMK 294 DP 582661	ob351	357°16'00"	C		13.99 C		Class B
UNMK 294 DP 582661	UNMK 34 DP 582661	ob352	23°06'00"	C		16.88 C		Class B
PEG 28 DP 582661	UNMK 295 DP 582661	ob257	23°18'00"	C		18.47 C		Class B
UNMK 295 DP 582661	UNMK 296 DP 582661	ob353	28°00'00"	C		16.73 C		Class B
UNMK 296 DP 582661	UNMK 297 DP 582661	ob354	52°58'00"	C		34.21 C		Class B
UNMK 297 DP 582661	UNMK 298 DP 582661	ob355	27°29'00"	C		13.62 C		Class B
UNMK 298 DP 582661	UNMK 299 DP 582661	ob356	23°07'00"	C		14.19 C		Class B
UNMK 299 DP 582661	UNMK 300 DP 582661	ob357	40°36'00"	C		19.31 C		Class B
UNMK 300 DP 582661	UNMK 301 DP 582661	ob358	16°16'00"	C		12.41 C		Class B
UNMK 301 DP 582661	UNMK 302 DP 582661	ob359	6°11'10"	C		40.15 C		Class B
UNMK 302 DP 582661	UNMK 303 DP 582661	ob360	0°24'00"	C		21.72 C		Class B
UNMK 303 DP 582661	UNMK 304 DP 582661	ob361	341°17'00"	C		12.41 C		Class B
UNMK 304 DP 582661	UNMK 305 DP 582661	ob362	309°24'00"	C		17.43 C		Class B
UNMK 305 DP 582661	UNMK 306 DP 582661	ob363	321°08'00"	C		10.16 C		Class B
UNMK 306 DP 582661	UNMK 307 DP 582661	ob364	355°58'00"	C		7.46 C		Class B
UNMK 307 DP 582661	UNMK 308 DP 582661	ob365	12°34'00"	C		22.21 C		Class B
UNMK 308 DP 582661	UNMK 309 DP 582661	ob366	1°41'00"	C		28.65 C		Class B

Mark and Vector

Survey Number DP 582661

Meridional Circuit Grey 2000

From	To	Code	Bearing	Adpt Surv	Bearing Correction	Distance	Adpt Surv	Class
UNMK 309 DP 582661	UNMK 310 DP 582661	ob367	14°07'00"	C		11.84 C		Class B
UNMK 310 DP 582661	UNMK 311 DP 582661	ob368	27°24'00"	C		21.08 C		Class B
UNMK 311 DP 582661	UNMK 312 DP 582661	ob369	12°34'00"	C		24.17 C		Class B
UNMK 312 DP 582661	UNMK 313 DP 582661	ob370	33°28'00"	C		15.11 C		Class B
UNMK 313 DP 582661	UNMK 315 DP 582661	ob371	20°34'00"	C		20.21 C		Class B
UNMK 315 DP 582661	UNMK 316 DP 582661	ob372	46°48'00"	C		20.33 C		Class B
UNMK 316 DP 582661	UNMK 317 DP 582661	ob373	35°21'00"	C		10.29 C		Class B
UNMK 317 DP 582661	UNMK 318 DP 582661	ob374	23°42'00"	C		14.74 C		Class B
UNMK 318 DP 582661	UNMK 319 DP 582661	ob375	22°53'00"	C		14.94 C		Class B
UNMK 319 DP 582661	UNMK 320 DP 582661	ob376	43°43'00"	C		18.17 C		Class B
UNMK 320 DP 582661	UNMK 321 DP 582661	ob377	56°26'00"	C		29.76 C		Class B
UNMK 321 DP 582661	UNMK 322 DP 582661	ob378	53°23'00"	C		32.63 C		Class B
UNMK 322 DP 582661	UNMK 37 DP 582661	ob379	61°05'00"	C		14.86 C		Class B
UNMK 35 DP 582661	UNMK 323 DP 582661	ob270	13°53'00"	C		16.52 C		Class B
UNMK 323 DP 582661	UNMK 324 DP 582661	ob380	28°00'00"	C		13.77 C		Class B
UNMK 324 DP 582661	UNMK 325 DP 582661	ob381	52°58'00"	C		34.25 C		Class B
UNMK 325 DP 582661	UNMK 326 DP 582661	ob382	27°29'00"	C		16.00 C		Class B
UNMK 326 DP 582661	UNMK 327 DP 582661	ob383	23°07'00"	C		13.15 C		Class B
UNMK 327 DP 582661	UNMK 328 DP 582661	ob384	40°36'00"	C		19.87 C		Class B
UNMK 328 DP 582661	UNMK 329 DP 582661	ob385	16°16'00"	C		15.15 C		Class B
UNMK 329 DP 582661	UNMK 330 DP 582661	ob386	6°11'10"	C		41.40 C		Class B
UNMK 330 DP 582661	UNMK 331 DP 582661	ob387	0°24'00"	C		23.69 C		Class B
UNMK 331 DP 582661	UNMK 332 DP 582661	ob388	341°17'00"	C		16.50 C		Class B
UNMK 332 DP 582661	UNMK 333 DP 582661	ob389	309°24'00"	C		19.07 C		Class B

Mark and Vector

Survey Number DP 582661

Meridional Circuit Grey 2000

From	To	Code	Bearing	Adpt Surv	Bearing Correction	Distance	Adpt Surv	Class
UNMK 333 DP 582661	UNMK 334 DP 582661	ob390	321°08'00"	C		6.41 C		Class B
UNMK 334 DP 582661	UNMK 335 DP 582661	ob391	355°58'00"	C		3.33 C		Class B
UNMK 335 DP 582661	UNMK 336 DP 582661	ob392	12°34'00"	C		21.76 C		Class B
UNMK 336 DP 582661	UNMK 337 DP 582661	ob393	1°41'00"	C		28.52 C		Class B
UNMK 337 DP 582661	UNMK 338 DP 582661	ob394	14°07'00"	C		9.81 C		Class B
UNMK 338 DP 582661	UNMK 339 DP 582661	ob395	27°24'00"	C		21.21 C		Class B
UNMK 339 DP 582661	UNMK 340 DP 582661	ob396	12°34'00"	C		23.68 C		Class B
UNMK 340 DP 582661	UNMK 341 DP 582661	ob397	33°28'00"	C		14.47 C		Class B
UNMK 341 DP 582661	UNMK 343 DP 582661	ob398	20°34'00"	C		19.13 C		Class B
UNMK 343 DP 582661	UNMK 344 DP 582661	ob399	46°48'00"	C		19.14 C		Class B
UNMK 344 DP 582661	UNMK 345 DP 582661	ob400	35°21'00"	C		12.11 C		Class B
UNMK 345 DP 582661	UNMK 346 DP 582661	ob401	23°42'00"	C		15.72 C		Class B
UNMK 346 DP 582661	UNMK 347 DP 582661	ob402	22°53'00"	C		13.35 C		Class B
UNMK 347 DP 582661	UNMK 348 DP 582661	ob403	43°43'00"	C		15.51 C		Class B
UNMK 348 DP 582661	UNMK 349 DP 582661	ob404	56°26'00"	C		29.00 C		Class B
UNMK 349 DP 582661	UNMK 350 DP 582661	ob405	53°23'00"	C		32.26 C		Class B
UNMK 350 DP 582661	UNMK 351 DP 582661	ob406	61°10'00"	C		12.30 C		Class B
UNMK 351 DP 582661	UNMK 36 DP 582661	ob407	88°48'00"	C		8.90 C		Class B
IS 7 DP 582661	UNMK 8 DP 582661	ob234	5°32'00"	C		384.21 C		
IS 5 DP 582661	PEG 26 DP 582661	ob38	245°29'10"	C		409.45 C		
IS 5 DP 582661	PEG 25 DP 582661	ob39	192°45'30"	C		238.41 C		
IS 4 DP 582661	PEG 22 DP 582661	ob41	35°52'20"	C		159.49 C		
IS 4 DP 582661	PEG 23 DP 582661	ob42	28°22'45"	C		188.76 C		
IS 4 DP 582661	PEG 19 DP 582661	ob43	219°35'26"	C		487.63 C		

Mark and Vector

Survey Number DP 582661

Meridional Circuit Grey 2000

From	To	Code	Bearing	Adpt Surv	Bearing Correction	Distance	Adpt Surv	Class
PEG XXXI(A) SO 7035	PEG (352) SO 7035	ob175	82°15'30"	C		10.18 A	SO 8567	
PEG (149) SO 7035	PEG (352) SO 7035	ob184	82°15'30"	C		20.36 A	SO 8567	
PEG XVII SO 6988	PEG (6) SO 6988	ob153	90°21'30"	A	DP 416144	0°00'00"	10.565 C	

Mark Name	Mark Condition	Description
3262		2 INCH DIAM IRON TUBE BRANDED '3260', OVER BURIED 0.5 INCH DIAM IRON TUBE. LOCKSPIT.
D1 (Tutaki SD)		IT VII SO 6988
IS 100 DP 582661		0.2d in paddock
IS 2 DP 582661		0.2d in paddock
IS 200 DP 582661		0.2d in paddock
IS 3 DP 550497		0.3d in grass paddock, side of airstrip
IS 3 DP 582661		0.2d in paddock
IS 4 DP 582661		0.15d in track
IS 5 DP 582661		flush in rocks
IS 6 DP 582661		0.1d in track
IT III DP 416144		0.3d in grass beside track
IT IX DP 18593		0.2d in berm
IT V DP 16282		0.15d in paddock, 0.6N of p&w fce 15yrs
IT V DP 416144		Iron Tube 0.2 deep in grass berm
XIII (Tutaki SD)		IT XIII SO 7035 (Destroyed)

*** End of Report ***

Schedule / Memorandum

Land Registration District

Nelson

Plan Number

DP 582661

Territorial Authority (the Council)

Tasman District Council

Memorandum of Easements

Purpose	Shown	Servient Tenement	Dominant Tenement
Right of Way	Area B DP 550497	Lot 2 DP 416144	Lot 4 DP 416144, Lot 2 & Lot 3

Certifying parties must sign or initial this box

Schedule / Memorandum

Land Registration District

Nelson

Survey Number

LT 582661

Territorial Authority (the Council)

Tasman District

Schedule of Existing Easements

Last Edited: 01 Nov 2022 12:30:10

<u>Purpose</u>	<u>Shown</u>	<u>Burdened Land</u> (<u>Servient Tenement</u>)	<u>Creating Document Reference</u>
Right of Way	B	Lot 1	EI 11840209.3
	B	Lot 1	EI 11840209.4

Memorandum of Easements

Last Edited: 15 Aug 2023 11:39:10

<u>Purpose</u>	<u>Shown</u>	<u>Burdened Land</u> (<u>Servient Tenement</u>)	<u>Benefited Land</u> (<u>Dominant Tenement</u>)
Right of Way	B	Lot 1	Lot 2, Lot 3, Lot 4 DP 416144
	D	Lot 1	Lot 2, Lot 3
	E	Lot 1	Lot 2

Notes

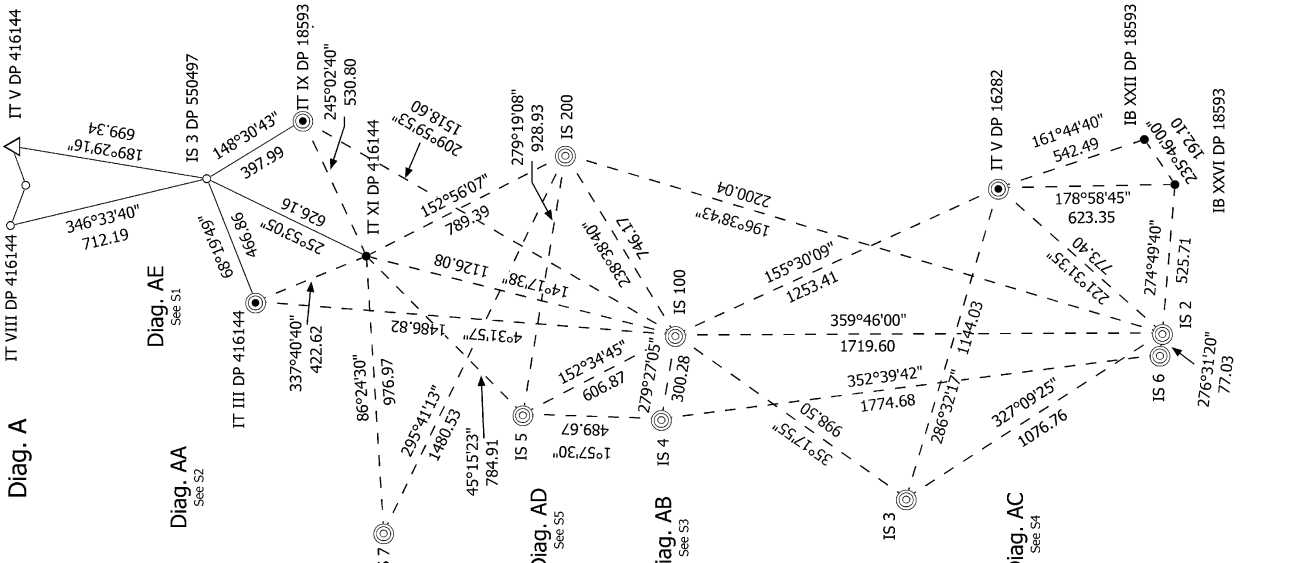
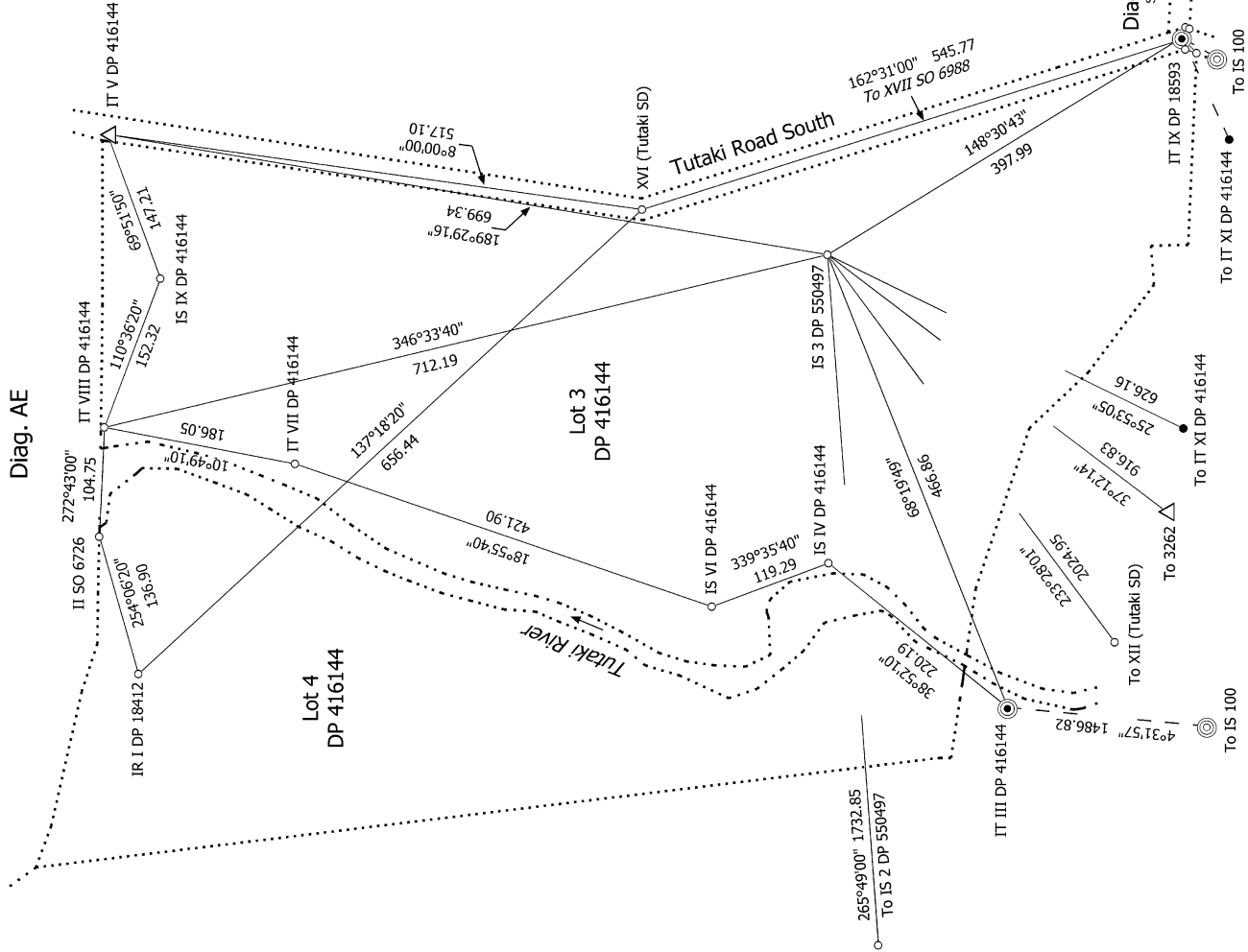
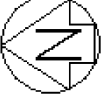
Last Edited: 01 Nov 2022 12:49:55

Lot 1 is subject to an existing esplanade strip (shown as Esplanade Strip F), creating document reference 8166068.1

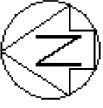
Amalgamation Conditions

Last Edited: 01 Dec 2022 11:01:14

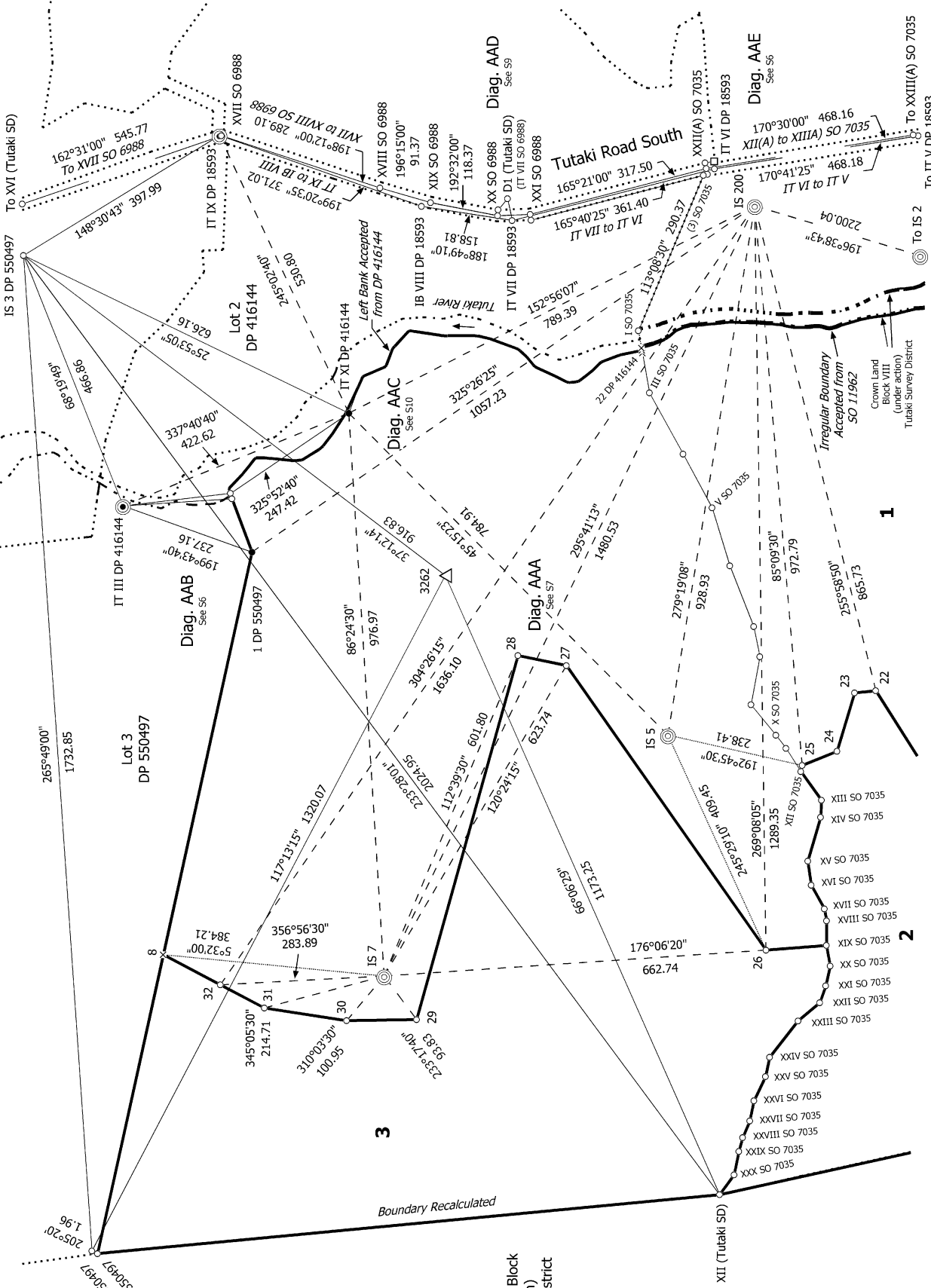
Lot 1 Plan 582661 and Lot 2 Plan 416144 (RT 948936), Part Section 23 Block VIII Tutaki SD (RT 948936), Sections 18-19 Block VIII Tutaki SD (RT 948936) and Section 1 Block XII Tutaki SD (RT 948936) be held in the same Record of Title.
See LINZ reference 1723654



<p>1763 Todd TDC RP/2101/03</p> <p>Land District: Nelson</p> <p>Digitally Generated Plan Generated on: 05/12/2023 5:53pm Page 22 of 41</p>	<p>Lots 1-3 Being Subdivision of Lot 4 DP 550497 and Section 22 SO 11962</p>	<p>Surveyor: Peter Lewis Newbury Firm: Planscapes (NZ) Limited (Nelson) Date of Survey: 29/10/2022</p>	<p>Record of Survey DP 582661</p> <p>Deposited on: 27/10/2023</p>
---	---	--	--



Diag. AA



Part Crown Land Block (under action) Tutaki Survey District

Land District: Nelson

Digitally Generated Plan

Generated on: 05/12/2023 5:53pm Page 23 of 41

Lots 1-3 Being Subdivision of Lot 4 DP 550497 and Section 22 SO 11962

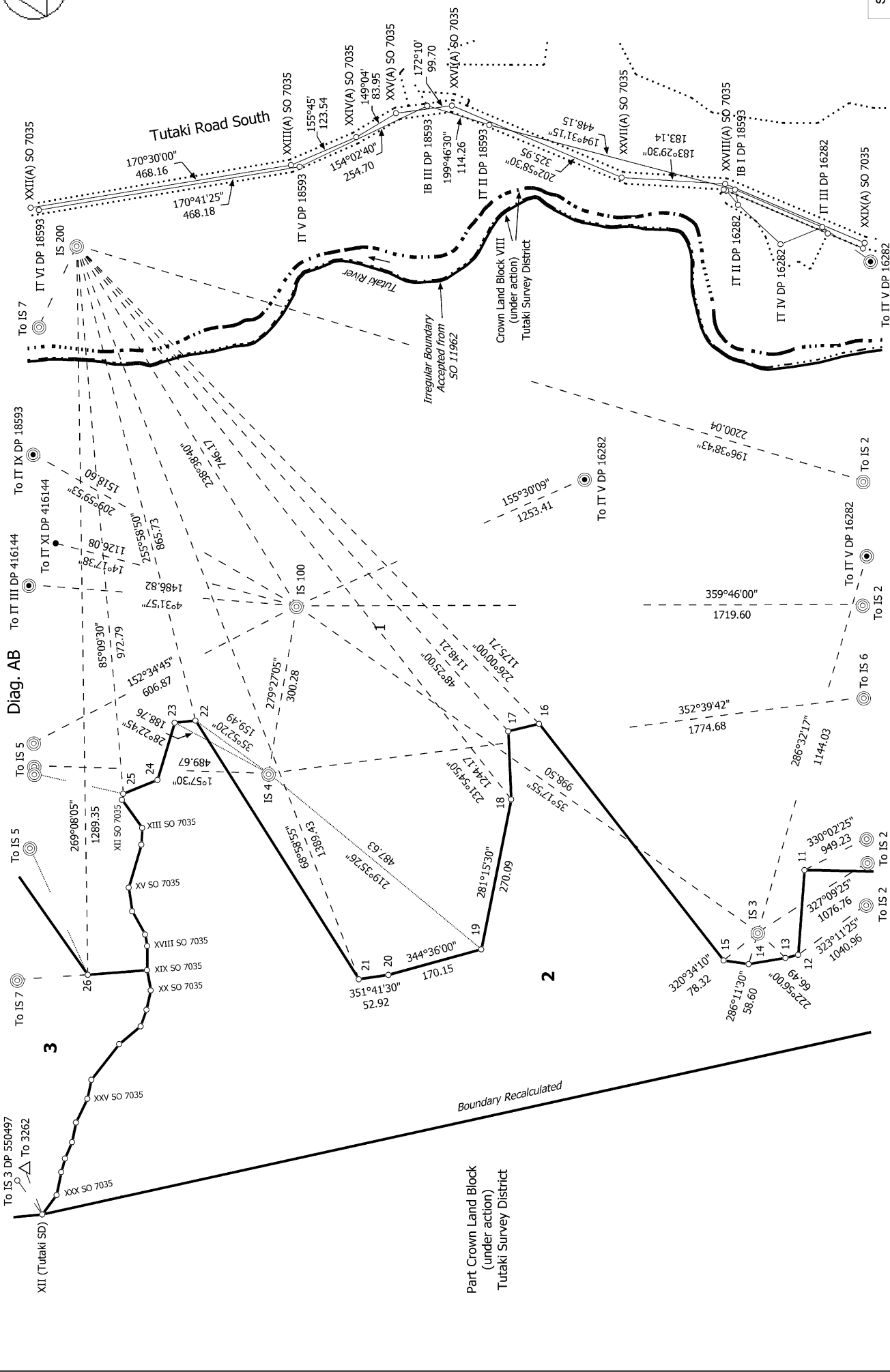
Surveyor: Peter Lewis Newbury

Firm: Planscapes (NZ) Limited (Nelson)

Date of Survey: 29/10/2022

Record of Survey DP 582661

Deposited on: 27/10/2023



S 3/10

Land District: Nelson

Digitally Generated Plan
Generated on: 05/12/2023 5:53pm Page 24 of 41

Lots 1-3 Being Subdivision of Lot 4 DP 550497 and Section 22 SO 11962

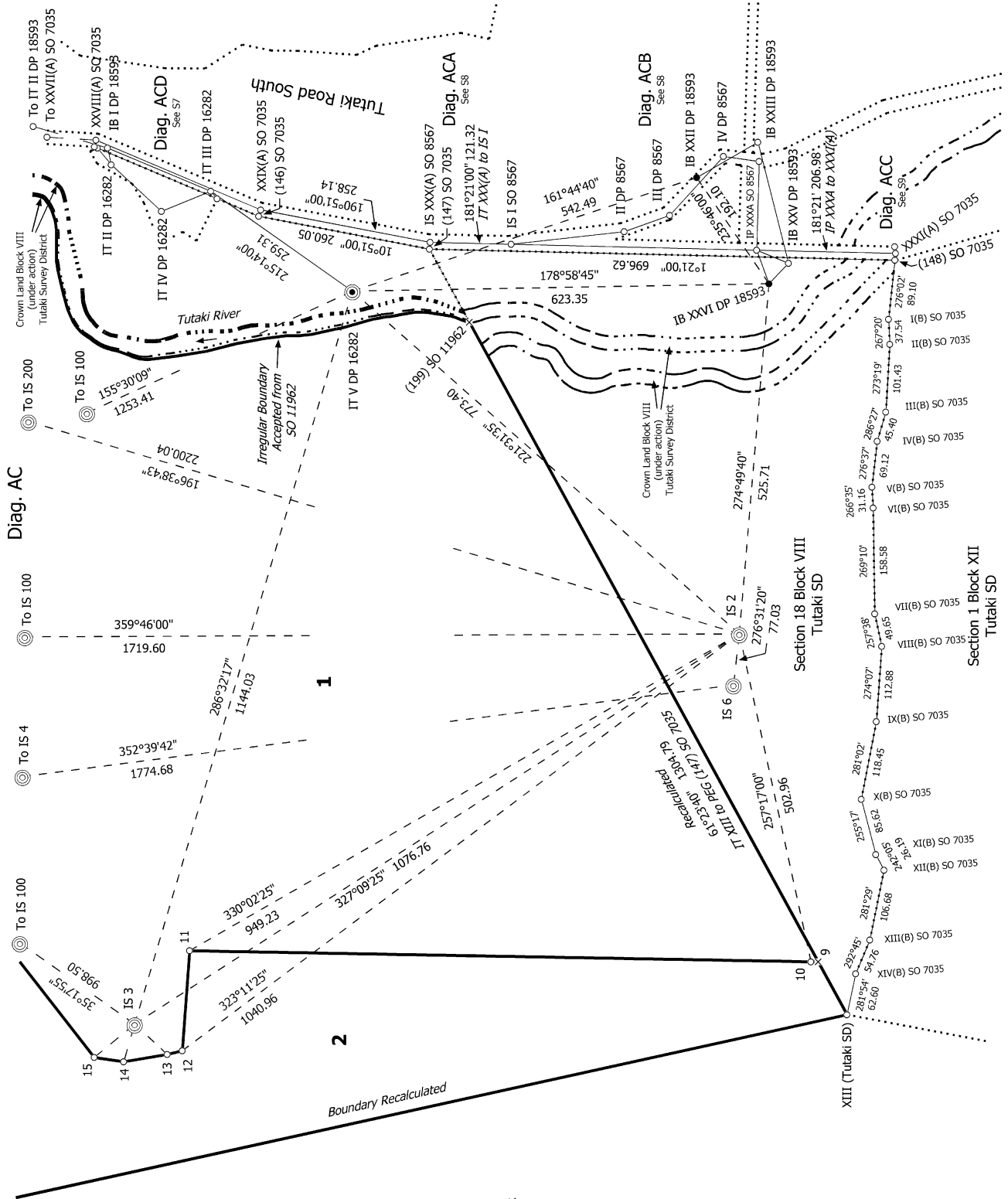
Surveyor: Peter Lewis Newbury
Firm: Planscapes (NZ) Limited (Nelson)
Date of Survey: 29/10/2022

**Record of Survey
DP 582661**

Deposited on: 27/10/2023



S 4/10



Part Crown Land Block
(under action)
Tutaki Survey District

Record of Survey
DP 582661

Deposited on: 27/10/2023

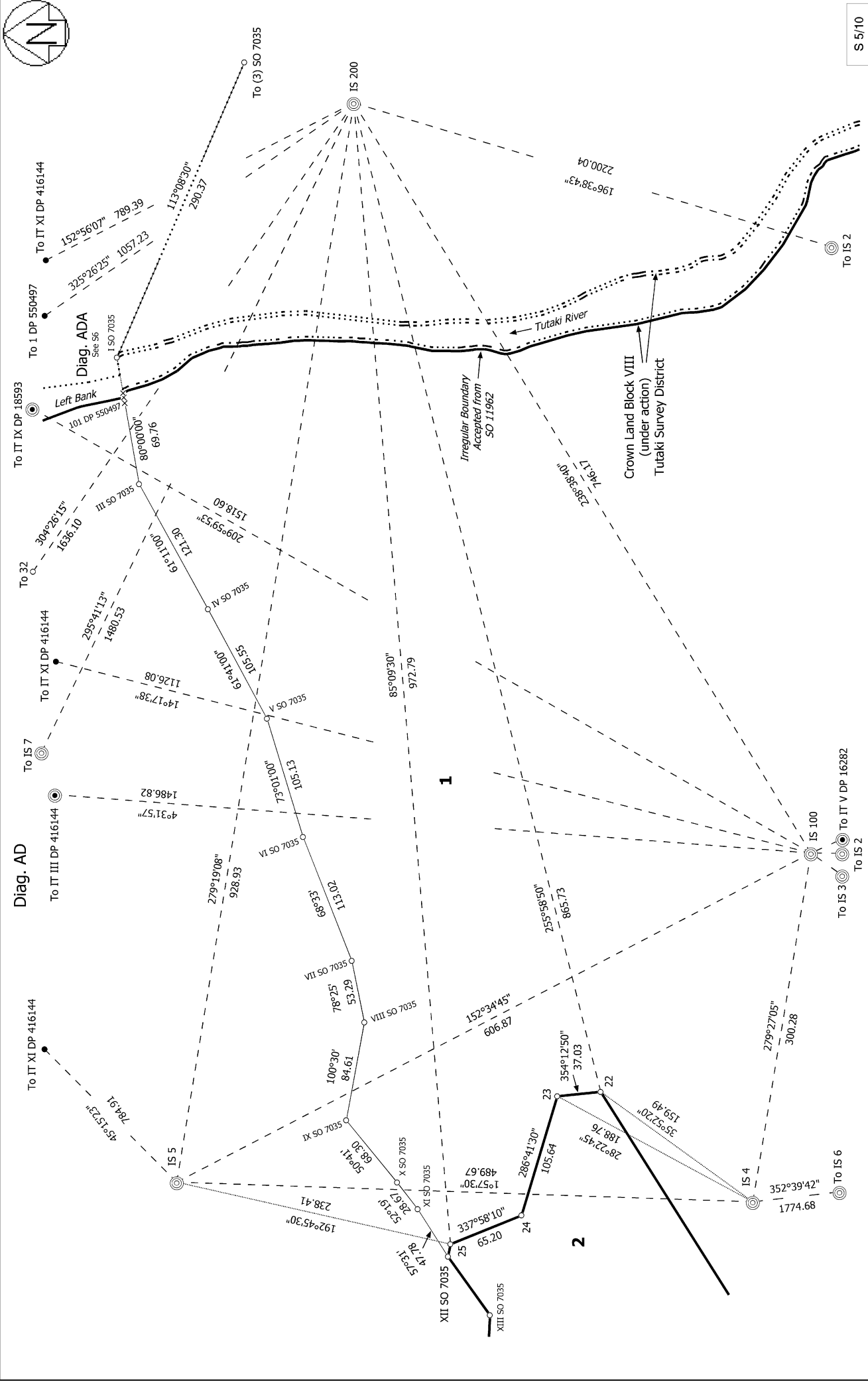
Surveyor: Peter Lewis Newbury
Firm: Planscapes (NZ) Limited (Nelson)
Date of Survey: 29/10/2022

Lots 1-3 Being Subdivision of Lot 4 DP 550497 and Section 22 SO 11962

Land District: Nelson

Digitally Generated Plan

Generated on: 05/12/2023 5:53pm Page 25 of 41



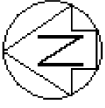
S 5/10

Record of Survey
 DP 582661
 Deposited on: 27/10/2023

Surveyor: Peter Lewis Newbury
 Firm: Planscapes (NZ) Limited (Nelson)
 Date of Survey: 29/10/2022

Lots 1-3 Being Subdivision of Lot 4 DP 550497 and Section 22 SO 11962

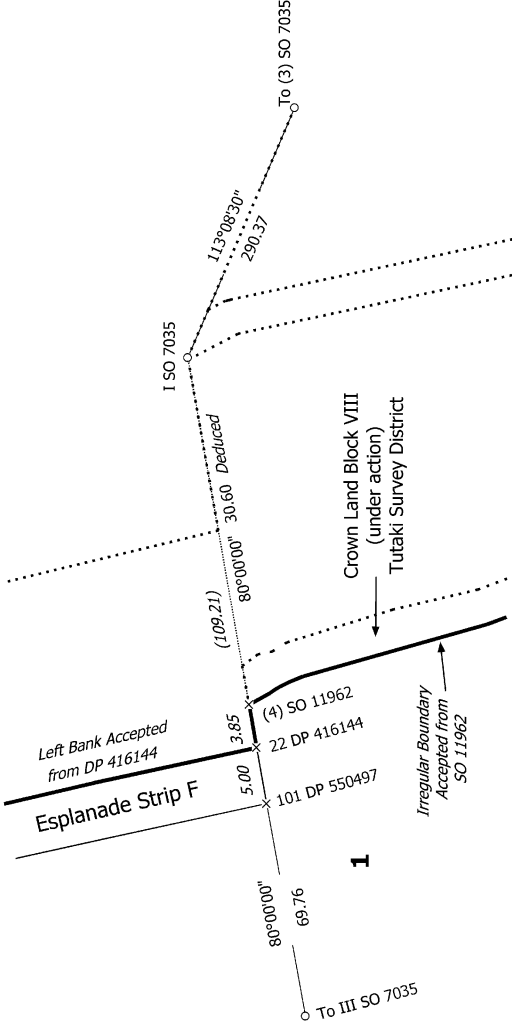
Land District: Nelson
 Digitally Generated Plan
 Generated on: 05/12/2023 5:53pm Page 26 of 41



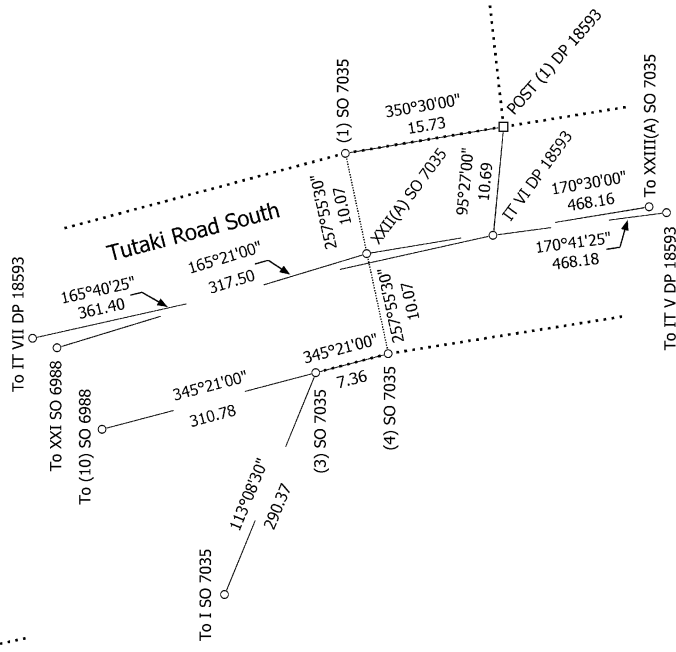
Diag. AAB

To IT III DP 416144

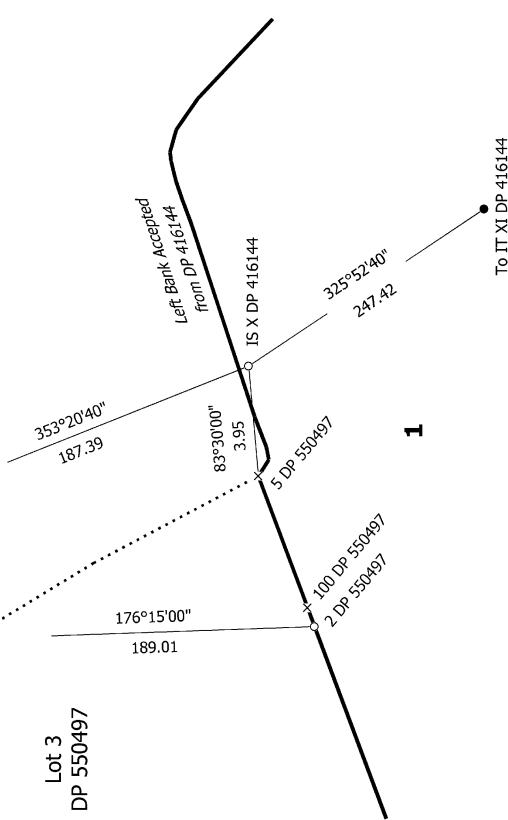
Diag. ADA



Diag. AAE



Lot 3
DP 550497



S 6/10

Land District: Nelson

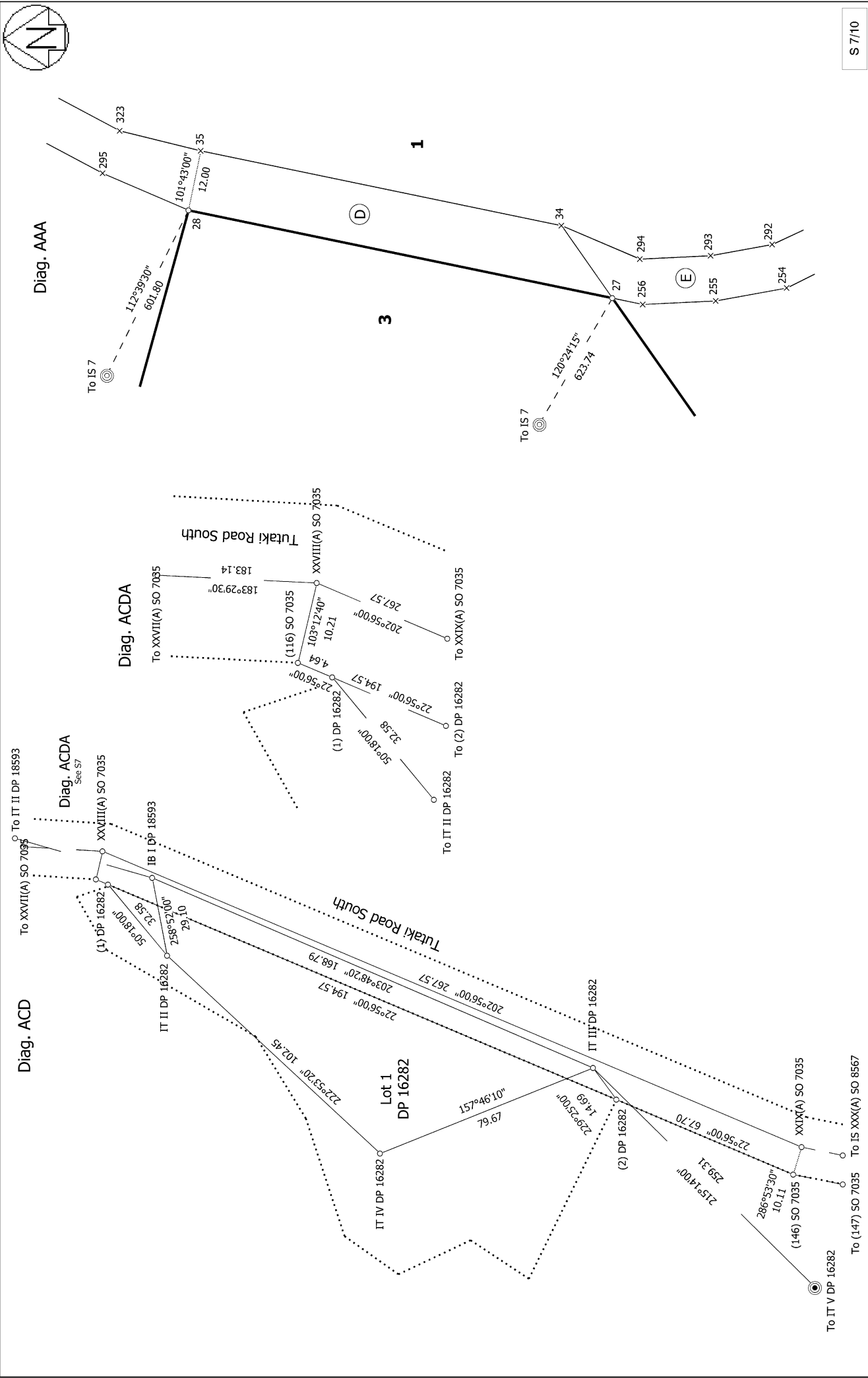
Lots 1-3 Being Subdivision of Lot 4 DP 550497 and Section 22 SO 11962

Surveyor: Peter Lewis Newbury
Firm: Planscapes (NZ) Limited (Nelson)
Date of Survey: 29/10/2022

Record of Survey
DP 582661

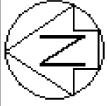
Digitally Generated Plan
Generated on: 05/12/2023 5:53pm Page 27 of 41

Deposited on: 27/10/2023

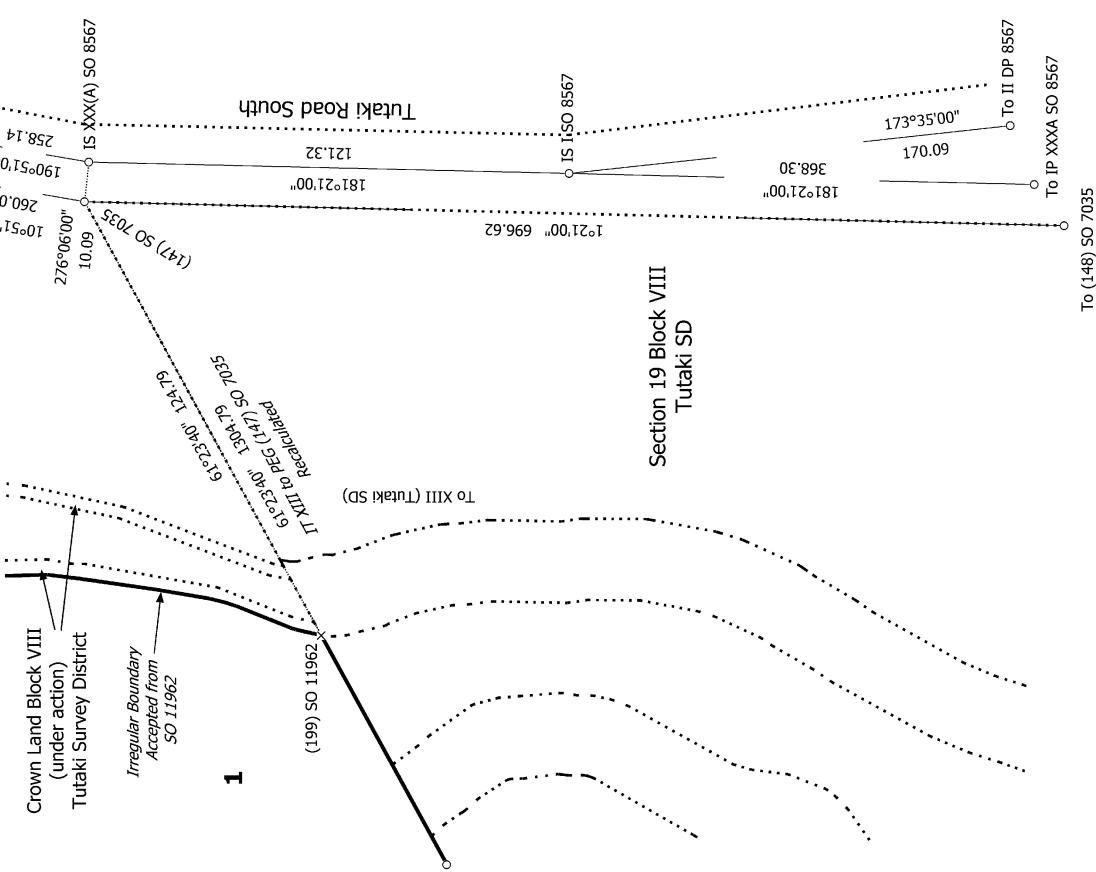


S 7/10

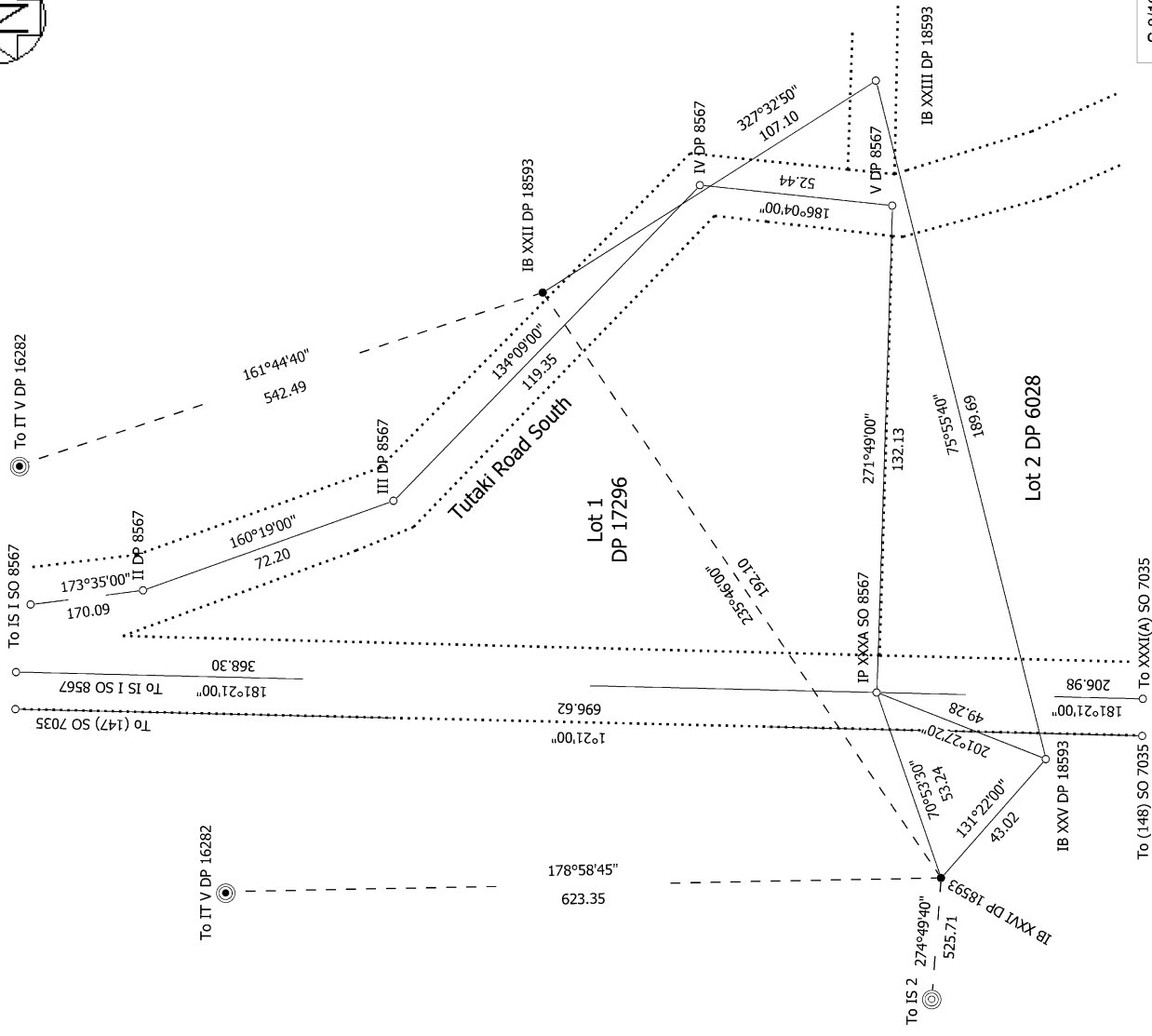
<p>Land District: Nelson</p> <p>Digitally Generated Plan</p> <p>Generated on: 05/12/2023 5:53pm Page 28 of 41</p>	<p>Lots 1-3 Being Subdivision of Lot 4 DP 550497 and Section 22 SO 11962</p>	<p>Surveyor: Peter Lewis Newbury</p> <p>Firm: Planscapes (NZ) Limited (Nelson)</p> <p>Date of Survey: 29/10/2022</p> <p>Record of Survey DP 582661</p> <p>Deposited on: 27/10/2023</p>
--	---	--



Diag. ACA



Diag. ACB



S 8/10

Land District: Nelson

Lots 1-3 Being Subdivision of Lot 4 DP 550497 and Section 22 SO 11962

Surveyor: Peter Lewis Newbury

Firm: Planscapes (NZ) Limited (Nelson)

Date of Survey: 29/10/2022

Record of Survey

DP 582661

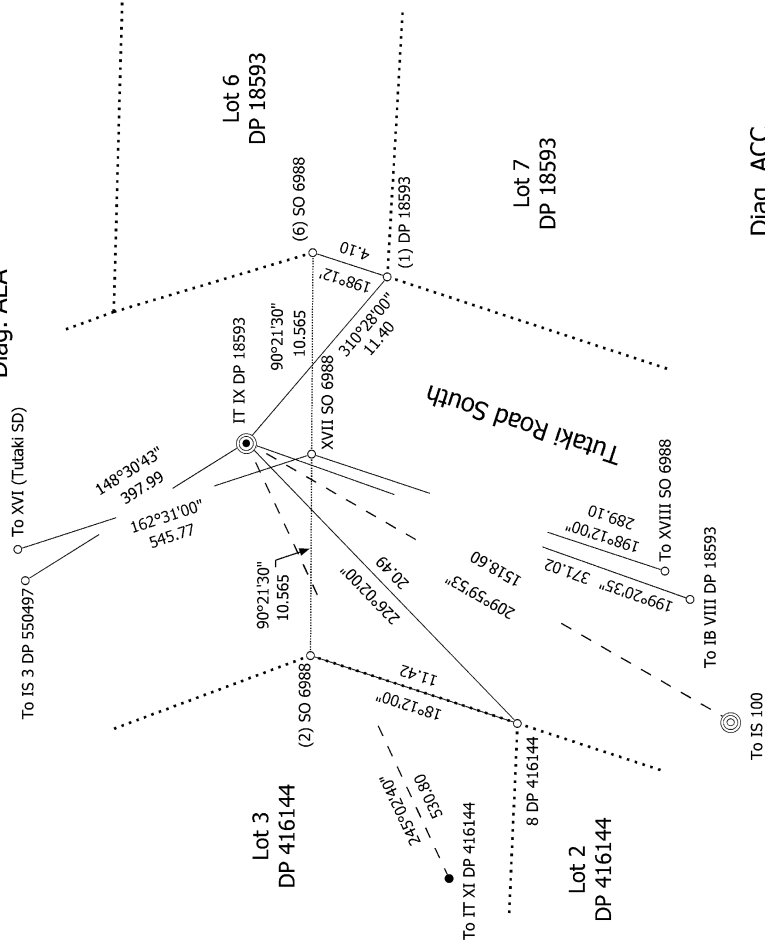
Digitally Generated Plan

Generated on: 05/12/2023 5:53pm Page 29 of 41

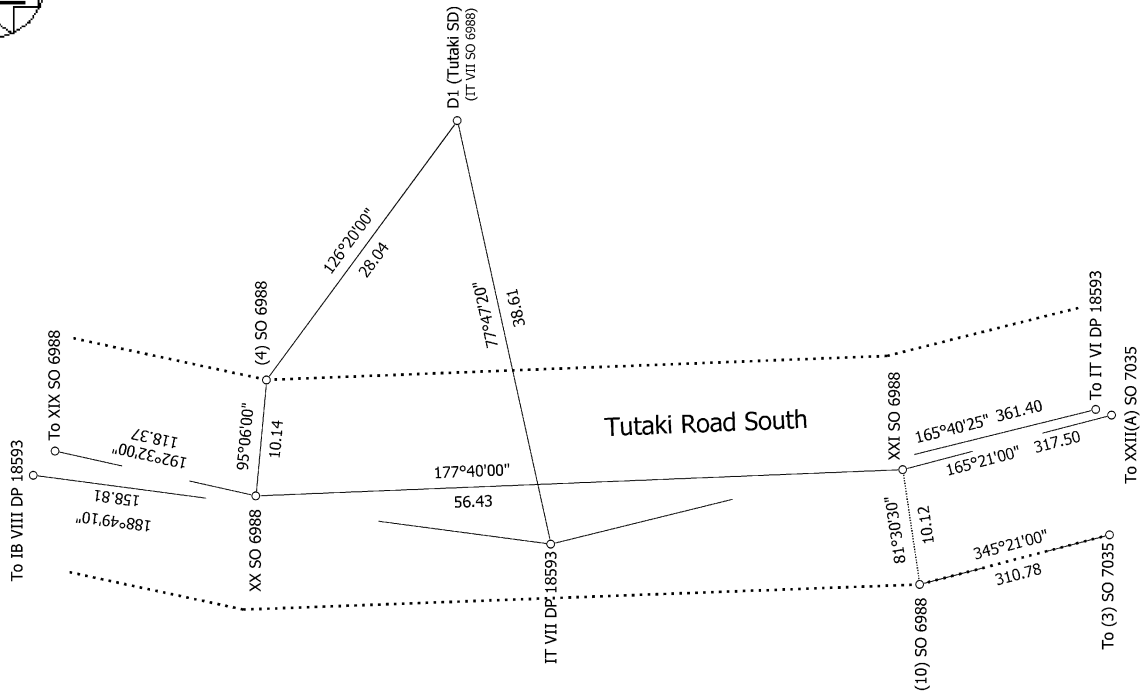
Deposited on: 27/10/2023



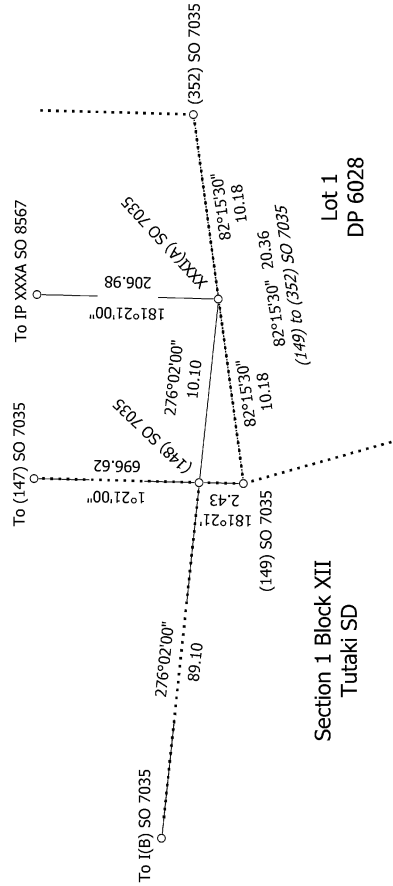
Diag. AEA



Diag. AAD



Diag. ACC



S 9/10

Land District: Nelson

Digitally Generated Plan

Generated on: 05/12/2023 5:53pm Page 30 of 41

Lots 1-3 Being Subdivision of Lot 4 DP 550497 and Section 22 SO 11962

Surveyor: Peter Lewis Newbury
Firm: Planscapes (NZ) Limited (Nelson)

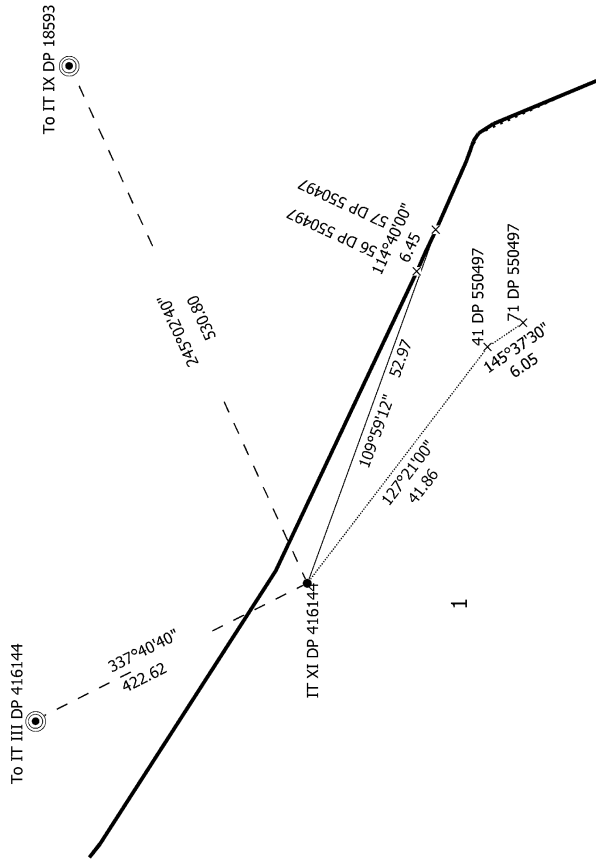
Date of Survey: 29/10/2022

Record of Survey
DP 582661

Deposited on: 27/10/2023



Diag. AAC



S 10/10

Land District: Nelson

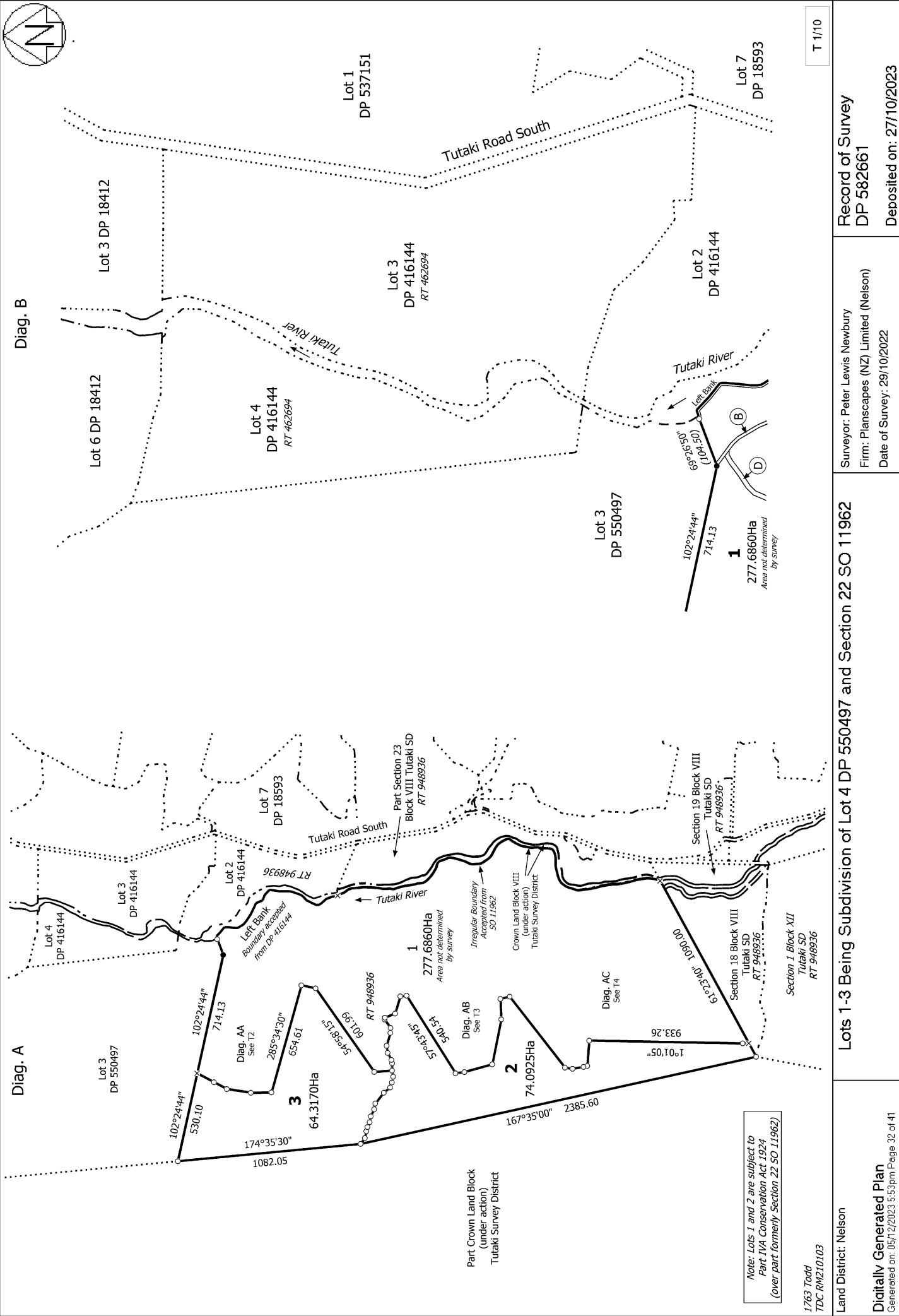
Digitally Generated Plan
Generated on: 05/12/2023 5:53pm Page 31 of 41

Lots 1-3 Being Subdivision of Lot 4 DP 550497 and Section 22 SO 11962

Surveyor: Peter Lewis Newbury
Firm: Planscapes (NZ) Limited (Nelson)
Date of Survey: 29/10/2022

Record of Survey
DP 582661

Deposited on: 27/10/2023



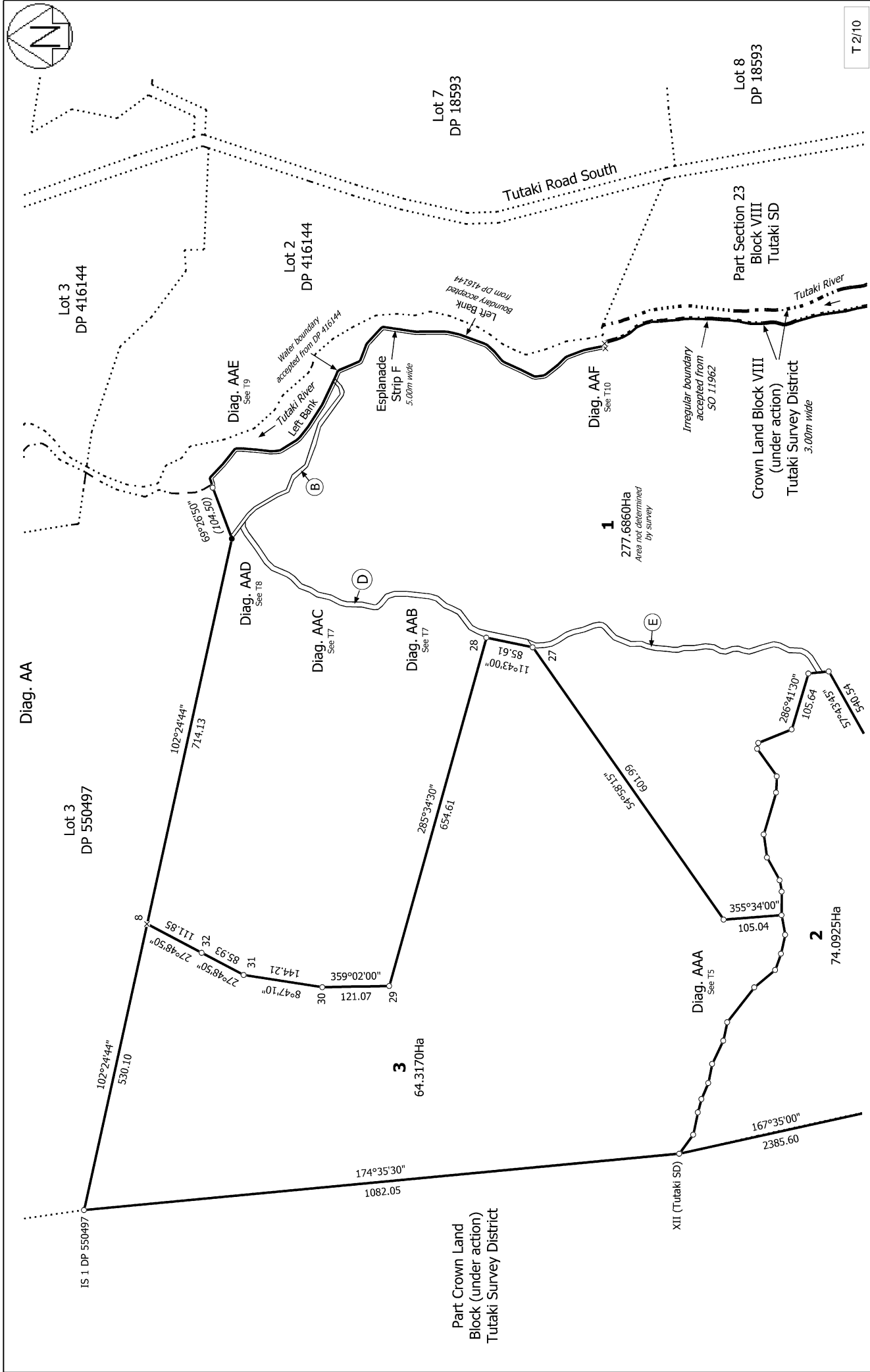
T 1/10

Record of Survey
DP 582661
Deposited on: 27/10/2023

Surveyor: Peter Lewis Newbury
Firm: Planscapes (NZ) Limited (Nelson)
Date of Survey: 29/10/2022

Lots 1-3 Being Subdivision of Lot 4 DP 550497 and Section 22 SO 11962

Land District: Nelson
Digitally Generated Plan
Generated on: 05/12/2023 5:53pm Page 32 of 41



T 2/10

Record of Survey
DP 582661

Surveyor: Peter Lewis Newbury
Firm: Planscapes (NZ) Limited (Nelson)
Date of Survey: 29/10/2022

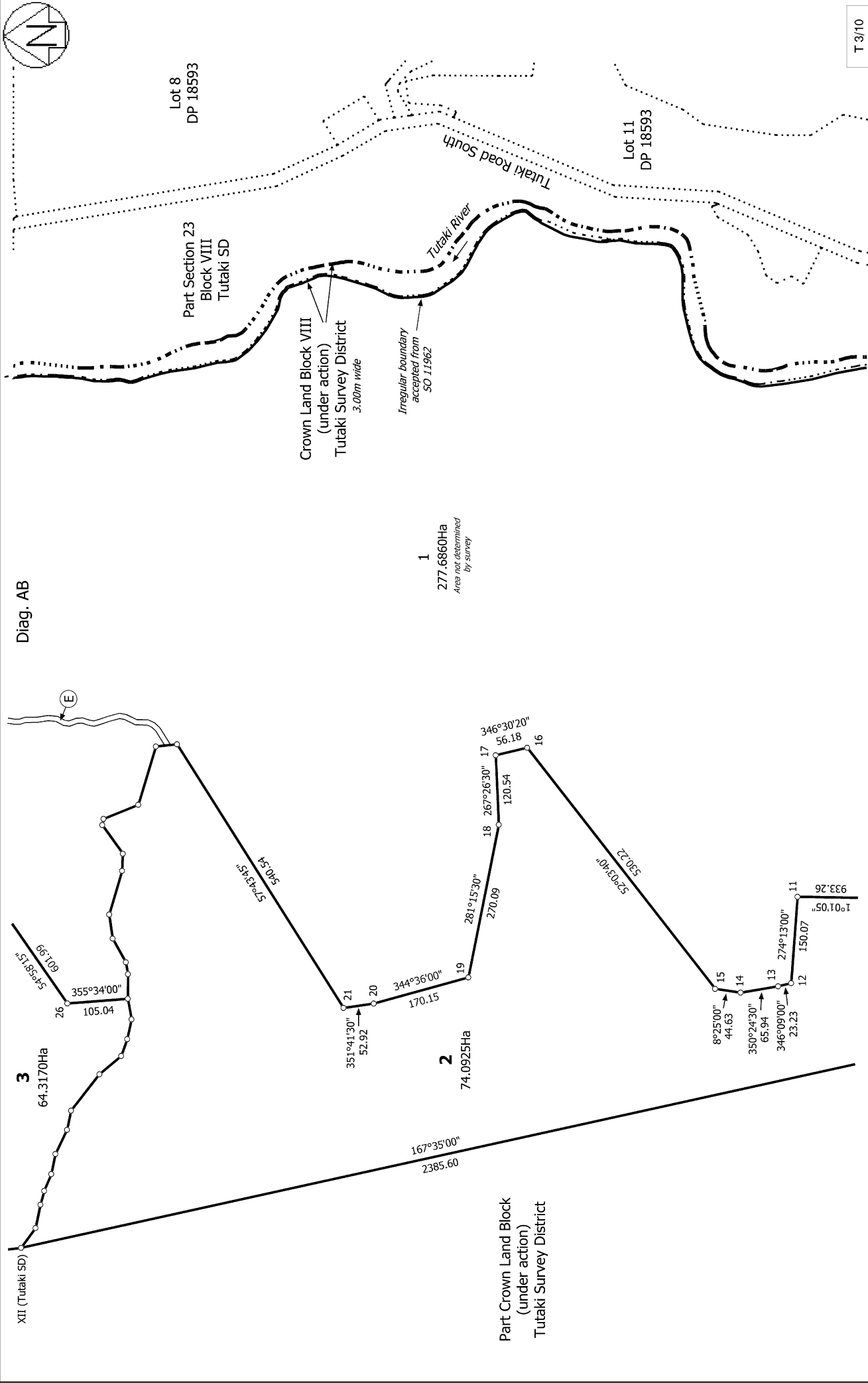
Deposited on: 27/10/2023

Surveyor: Peter Lewis Newbury
Firm: Planscapes (NZ) Limited (Nelson)
Date of Survey: 29/10/2022

Lots 1-3 Being Subdivision of Lot 4 DP 550497 and Section 22 SO 11962

Land District: Nelson

Digitally Generated Plan
Generated on: 05/12/2023 5:53pm Page 33 of 41



T 3/10

Record of Survey
 DP 582661
 Deposited on: 27/10/2023

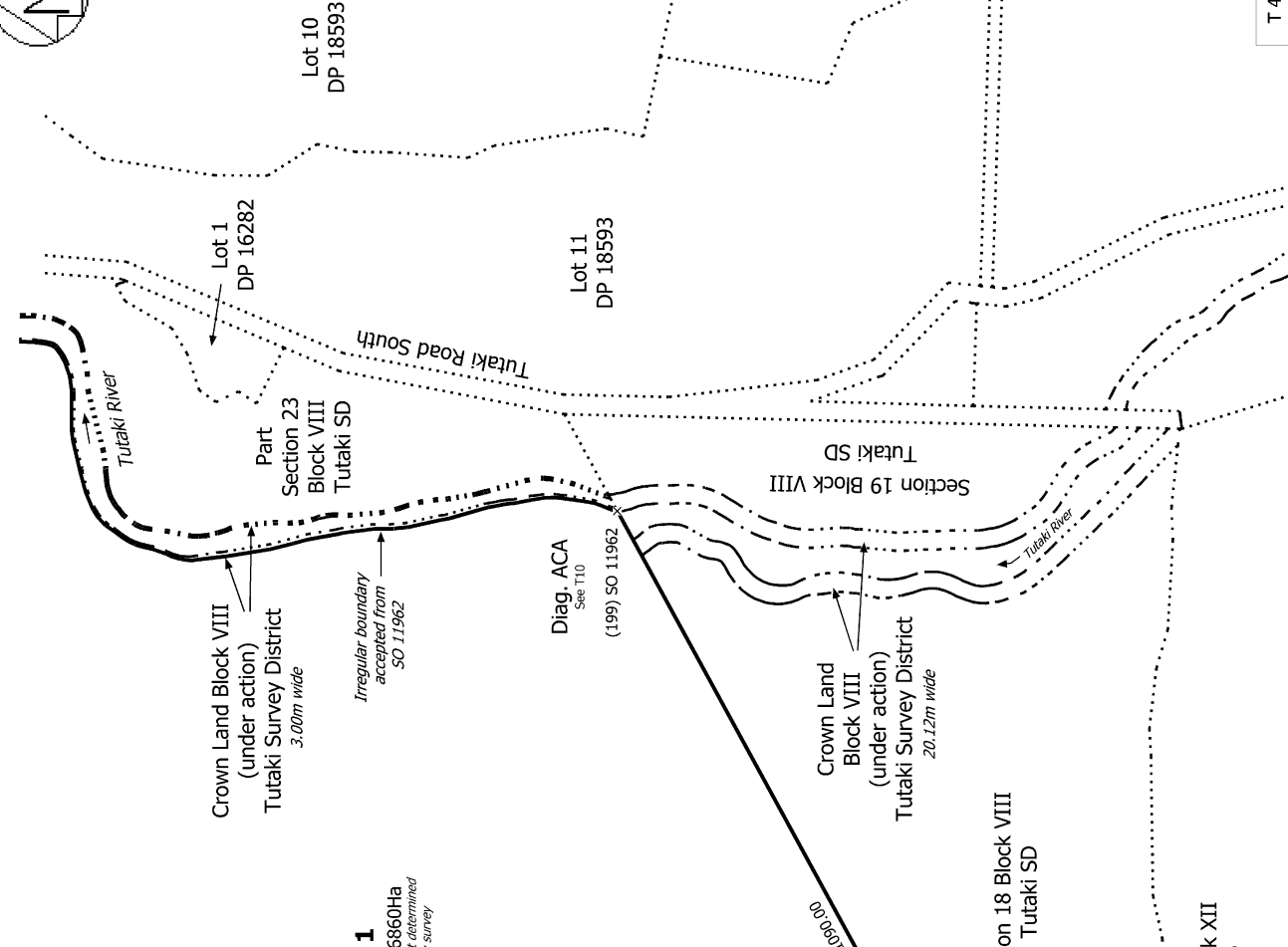
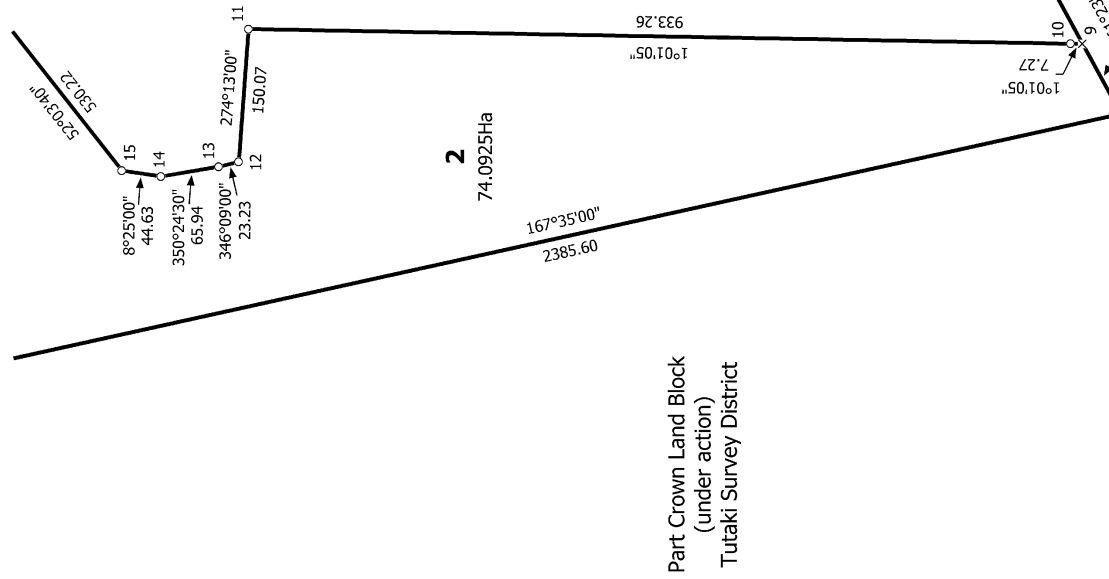
Surveyor: Peter Lewis Newbury
 Firm: Planscapes (NZ) Limited (Nelson)
 Date of Survey: 29/10/2022

Lots 1-3 Being Subdivision of Lot 4 DP 550497 and Section 22 SO 11962

Land District: Nelson
 Digitally Generated Plan
 Generated on: 05/12/2023 5:53pm Page 34 of 41

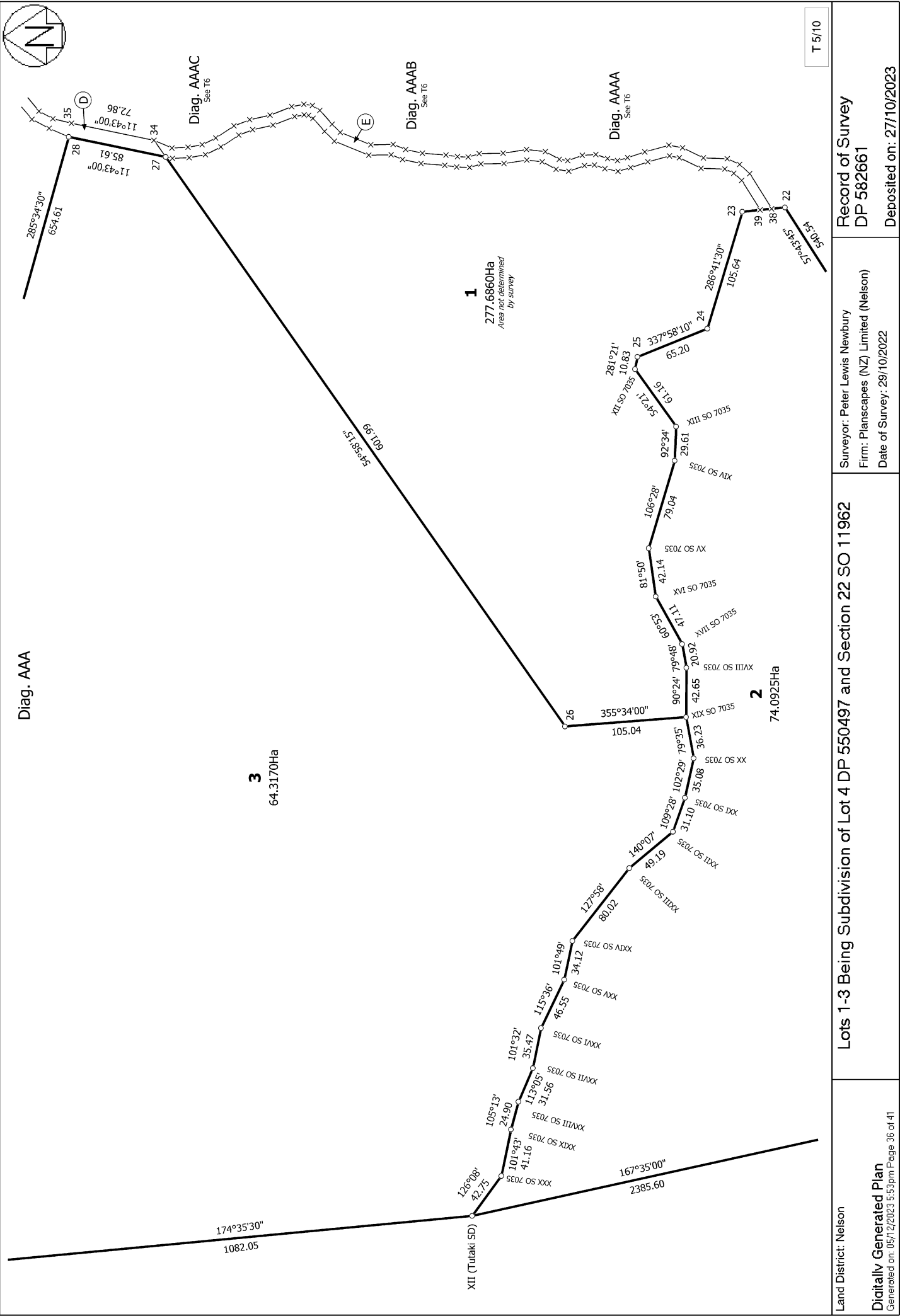


Diag. AC

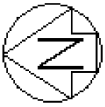


T 4/10

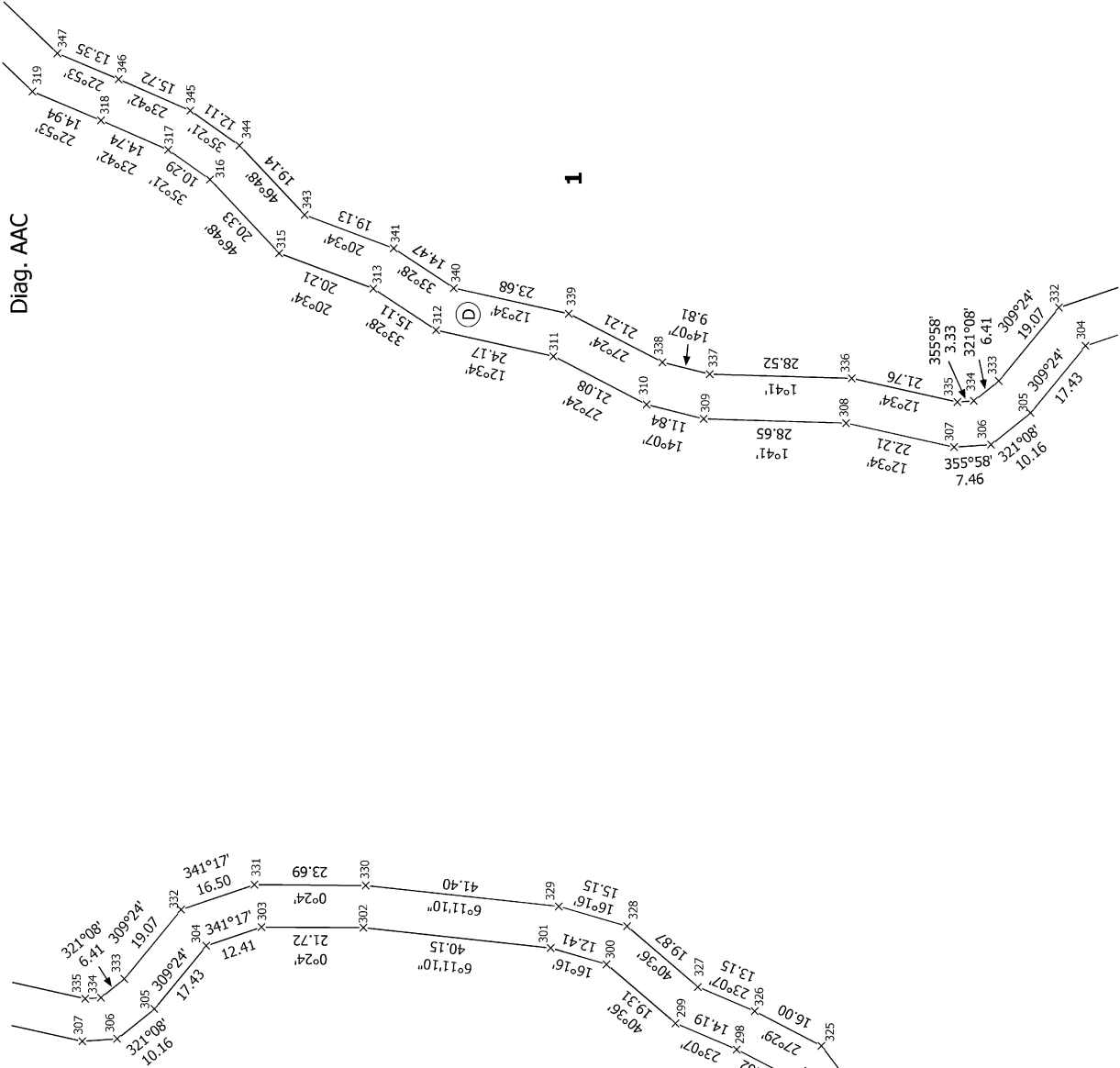
<p>Land District: Nelson</p> <p>Digitally Generated Plan</p> <p>Generated on: 05/12/2023 5:53pm Page 35 of 41</p>	<p>Lots 1-3 Being Subdivision of Lot 4 DP 550497 and Section 22 SO 11962</p>	<p>Surveyor: Peter Lewis Newbury Firm: Planscapes (NZ) Limited (Nelson) Date of Survey: 29/10/2022</p>	<p>Record of Survey DP 582661 Deposited on: 27/10/2023</p>
--	---	--	---



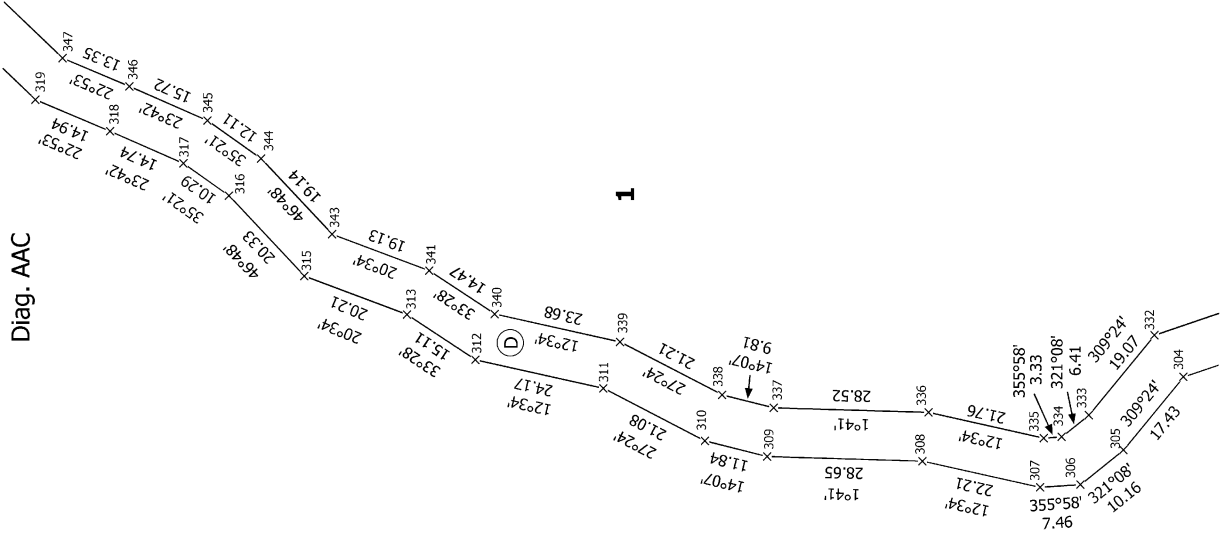
Land District: Nelson	Lots 1-3 Being Subdivision of Lot 4 DP 550497 and Section 22 SO 11962	Record of Survey DP 582661
Digitally Generated Plan Generated on: 05/12/2023 5:53pm Page 36 of 41	Surveyor: Peter Lewis Newbury Firm: Planscapes (NZ) Limited (Nelson) Date of Survey: 29/10/2022	Deposited on: 27/10/2023



Diag. AAB



Diag. AAC



T 7/10

Land District: Nelson

Digitally Generated Plan

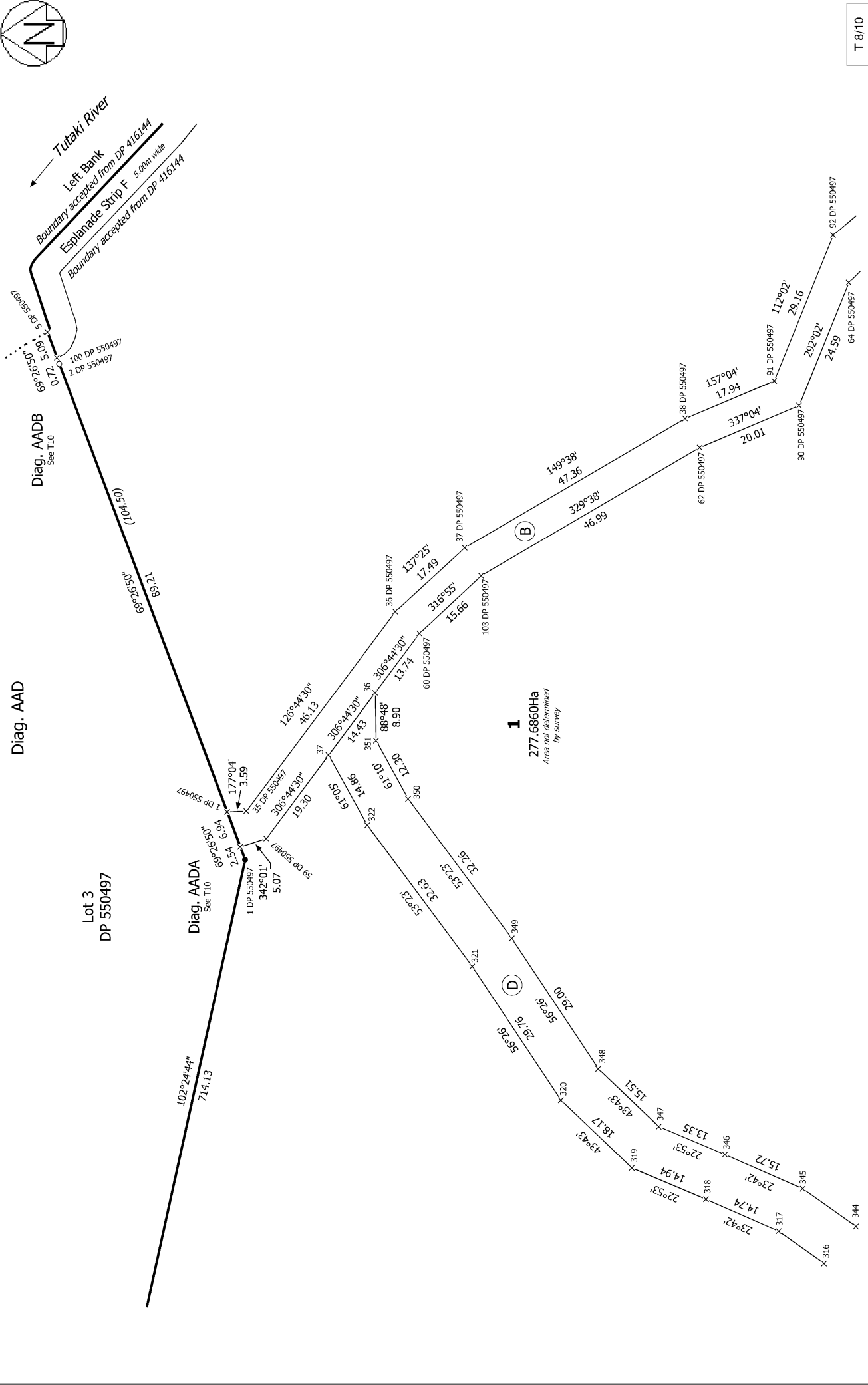
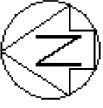
Generated on: 05/12/2023 5:53pm Page 36 of 41

Lots 1-3 Being Subdivision of Lot 4 DP 550497 and Section 22 SO 11962

Surveyor: Peter Lewis Newbury
Firm: Planscapes (NZ) Limited (Nelson)
Date of Survey: 29/10/2022

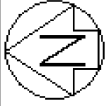
Record of Survey
DP 582661

Deposited on: 27/10/2023



T 8/10

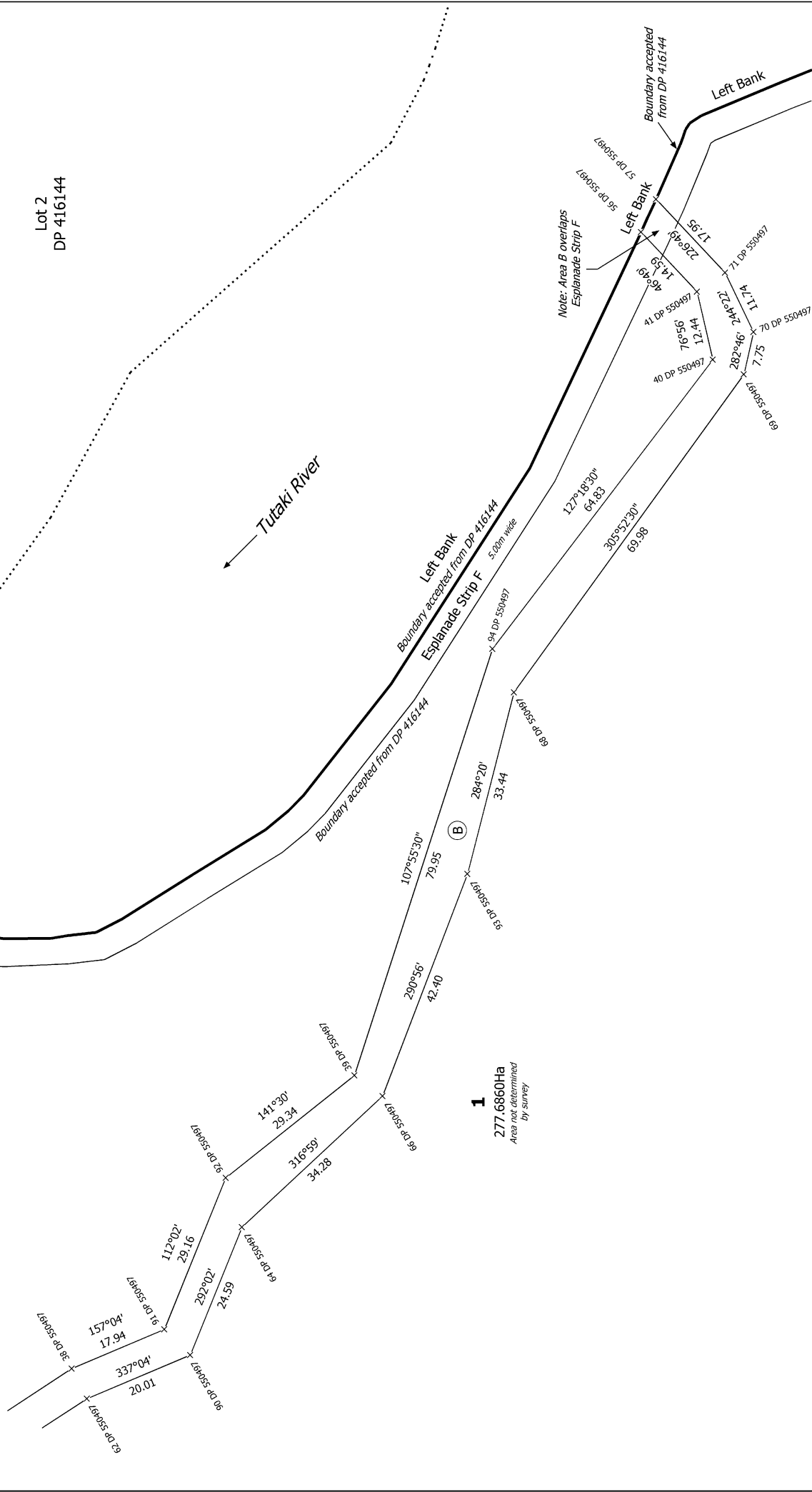
Land District: Nelson	Lots 1-3 Being Subdivision of Lot 4 DP 550497 and Section 22 SO 11962	Digitally Generated Plan Generated on: 05/12/2023 5:53pm Page 39 of 41
Surveyor: Peter Lewis Newbury Firm: Planscapes (NZ) Limited (Nelson) Date of Survey: 29/10/2022	Record of Survey DP 582661	Deposited on: 27/10/2023



Lot 2
DP 416144

Diag. AAE

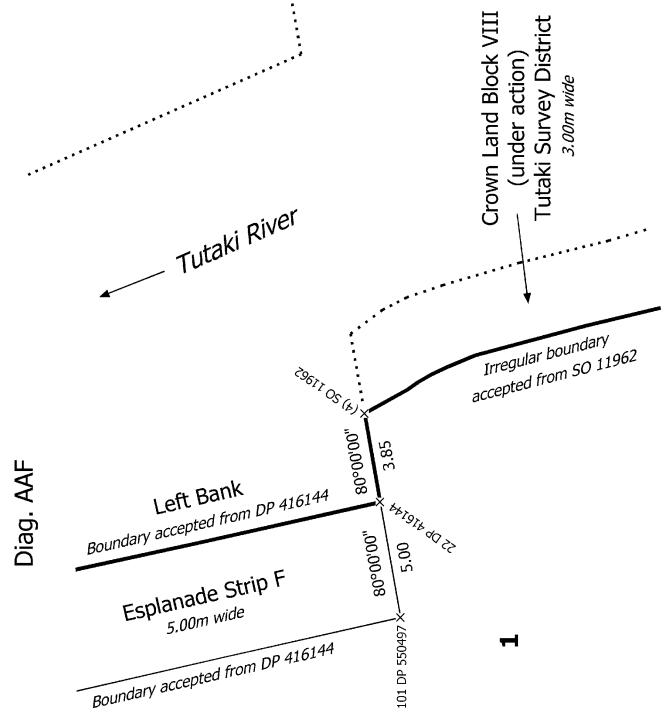
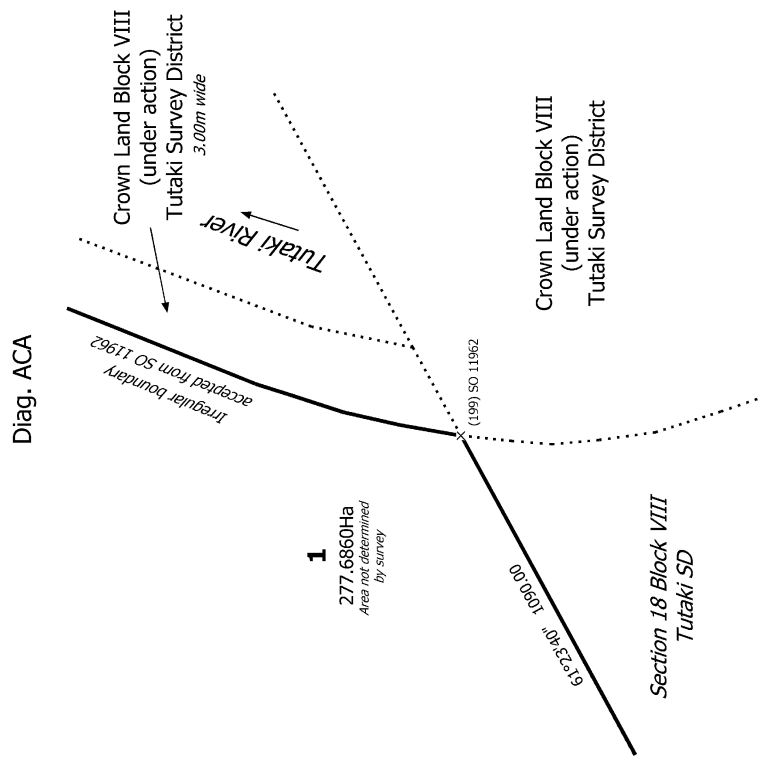
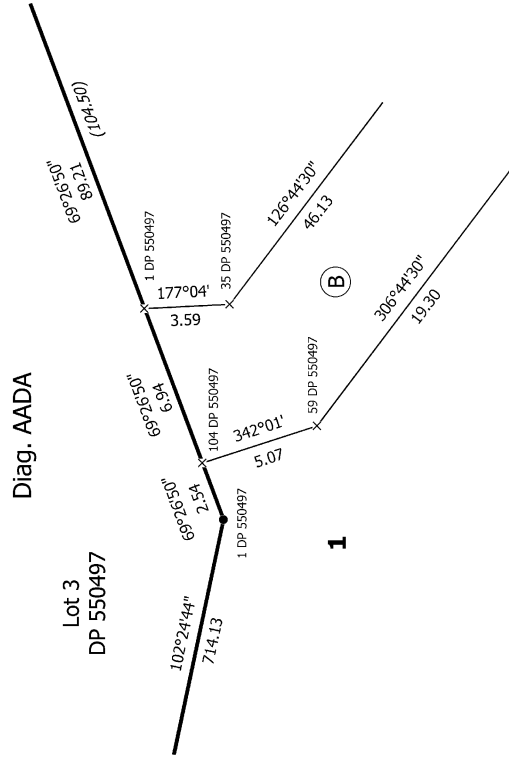
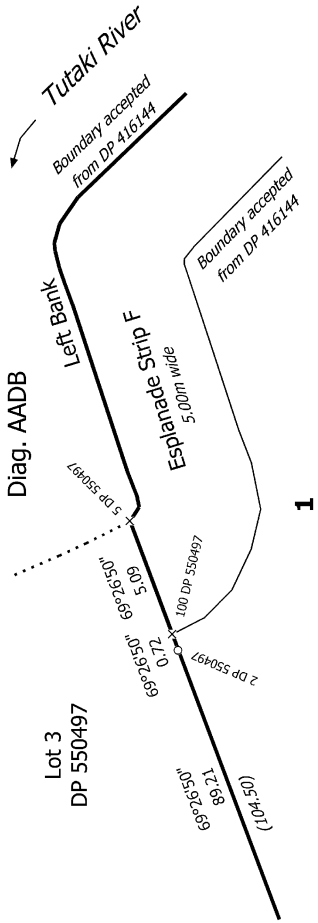
Tutaki River



1
277.6860Ha
Area not determined
by survey

T 9/10

Land District: Nelson	Lots 1-3 Being Subdivision of Lot 4 DP 550497 and Section 22 SO 11962	Record of Survey DP 582661
Digitally Generated Plan Generated on: 05/12/2023 5:53pm Page 40 of 41	Surveyor: Peter Lewis Newbury Firm: Planscapes (NZ) Limited (Nelson) Date of Survey: 29/10/2022	Deposited on: 27/10/2023



T 10/10

Land District: Nelson	Lots 1-3 Being Subdivision of Lot 4 DP 550497 and Section 22 SO 11962	Record of Survey DP 582661
Digitally Generated Plan Generated on: 05/12/2023 5:53pm Page 41 of 41	Surveyor: Peter Lewis Newbury Firm: Planscapes (NZ) Limited (Nelson) Date of Survey: 29/10/2022	Deposited on: 27/10/2023