



Record of Survey - DP 582425

Survey Number DP 582425
Surveyor Reference 21149 488 Leith St LT Survey
Surveyor Mark Peter Robert Geddes
Survey Firm TL Survey Services Ltd
Surveyor Declaration I Mark Peter Robert Geddes, being a licensed cadastral surveyor, certify that--
(a) this dataset provided by me and its related survey are accurate, correct and in accordance with the Cadastral Survey Act 2002 and Cadastral Survey Rules 2021; and
(b) the survey was undertaken by me or under my personal direction.
Declared on 17 Jan 2023 12:10 PM

Survey Details

Dataset Description Lot 1 being Section 28 Block XXXV TN OF Dunedin
Purpose LT Subdivision
Status Deposited **Type** Survey
Land District Otago **Survey Class** Class A
Meridional Circuit North Taieri 2000 **Vertical Datum** None

Survey Dates

Surveyed Date 12/09/2022 **Certified Date** 17/01/2023
Submitted Date 17/01/2023 12:10:45 **Survey Approval Date** 09/02/2023
Deposit Date 25/10/2023

Referenced Surveys

Survey Number	Land District	Bearing Correction
DP 22214	Otago	0°00'00"
DP 19129	Otago	0°00'00"
DP 444166	Otago	0°00'00"
DP 458107	Otago	0°00'00"
LT 468836	Otago	0°00'00"
DP 518898	Otago	0°00'00"
SO 523523	Otago	0°00'00"

Territorial Authorities

Dunedin City

Comprised In

RT OT293/204 Ltd

Created Parcels

Parcels	Parcel Intent	Area	RT Reference
Lot 1 Deposited Plan 582425	Fee Simple Title	0.1014 Ha	1090152
Area A Deposited Plan 582425	Easement		
Total Area		0.1014 Ha	

Mark and Vector

Survey Number DP 582425

Meridional Circuit North Taieri 2000

From	To	Code	Bearing	Adpt Surv	Bearing Correction	Distance	Adpt Surv	Class
SS 2L NO 2 SO 477221	IT III DP 444166	ob0	201°39'50"	M		222.13 M		
IT III DP 444166	S NAIL 1 SO 483955	ob5	223°25'50"	A	SO 523523	45.76 A	SO 523523	
S NAIL 1 SO 483955	IT II DP 312452	ob7	178°41'00"	A	SO 523523	45.50 A	SO 523523	
SS 2L NO 2 SO 477221	NAIL I DP 582425	ob1	201°39'50"	M		61.07 M		
NAIL I DP 582425	NAIL II DP 582425	ob8	201°39'50"	M		13.70 M		
NAIL II DP 582425	IT III DP 444166	ob10	201°39'50"	M		147.36 M		
SS 2L NO 2 SO 477221	SS 2H NO 2 SO 477221	ob2	291°39'10"	M		120.70 M		
SS 2H NO 2 SO 477221	IT 1 DP 468836	ob13	201°25'30"	A	DP 458107	221.98 A	DP 458107	
IT 1 DP 468836	IT III DP 444166	ob15	111°44'00"	A	LT 468836	119.77 A	LT 468836	
SS 2H NO 2 SO 477221	IS I DP 22214	ob14	201°39'10"	A	DP 22214	48.91 A	DP 22214	
IS I DP 22214	IS II DP 22214	ob16	201°39'10"	A	DP 22214	12.45 A	DP 22214	
IS II DP 22214	IR Ia DP 19129	ob19	201°39'10"	A	DP 22214	18.30 A	DP 22214	
IR Ia DP 19129	SS 3D ST4	ob21	201°39'10"	A	DP 444166	141.96 A	DP 444166	
SS 3D ST4	3L ST 4	ob23	111°39'10"	A	DP 444166	120.69 A	DP 444166	
3L ST 4	IT II DP 11508	ob24	21°39'10"	A	DP 444166	42.15 A	DP 444166	
IT II DP 11508	IS V DP 2978	ob25	21°39'10"	A	DP 444166	38.37 A	DP 444166	
IS V DP 2978	UNMK DP 2978	ob26	21°39'10"	A	DP 444166	21.25 A	DP 444166	
UNMK DP 2978	IR II DP 19129	ob27	21°39'10"	A	DP 444166	21.30 A	DP 444166	
IR II DP 19129	SS 2L NO 2 SO 477221	ob28	21°39'10"	A	DP 444166	98.55 A	DP 444166	
SS 2L NO 2 SO 477221	IS II DP 444166	ob3	27°20'50"	M		137.03 M		
SS 2L NO 2 SO 477221	SS 1L ST 2	ob4	21°38'50"	M		127.32 M		
IT III DP 444166	NAIL 3 DP 518898	ob6	22°58'00"	A	DP 518898	41.91 A	DP 518898	
NAIL 3 DP 518898	NAIL II DP 582425	ob30	21°09'10"	M		105.46 M		
NAIL 3 DP 518898	NAIL 5 DP 518898	ob31	22°58'00"	A	DP 518898	9.03 A	DP 518898	
NAIL 5 DP 518898	NAIL II DP 582425	ob32	20°59'20"	M		96.43 M		
IR Ia DP 19129	IR V DP 19129	ob22	112°09'28"	A	DP 19129	17.39 A	DP 19129	
IR V DP 19129	IR VI DP 19129	ob33	112°09'28"	A	DP 19129	39.41 A	DP 19129	
IR VI DP 19129	IR IV DP 19129	ob34	112°09'28"	A	DP 19129	11.47 A	DP 19129	
IR IV DP 19129	IT III DP 19129	ob35	162°24'48"	A	DP 19129	23.33 A	DP 19129	
IT III DP 19129	IR II DP 19129	ob36	111°59'58"	A	DP 19129	37.66 A	DP 19129	

Mark and Vector

Survey Number DP 582425

Meridional Circuit North Taieri 2000

From	To	Code	Bearing	Adpt Surv	Bearing Correction	Distance	Adpt Surv	Class
IS II DP 22214	IT VI DP 22214	ob20	109°34'33"	A DP 22214	-0°00'32"	68.17 A	DP 22214	
IT VI DP 22214	IS V DP 22214	ob37	13°45'08"	A DP 22214	-0°00'32"	16.84 A	DP 22214	
IS V DP 22214	IT IV DP 22214	ob38	291°40'03"	A DP 22214	-0°00'32"	20.66 A	DP 22214	
IT IV DP 22214	IS III DP 22214	ob39	241°48'53"	A DP 22214	-0°00'32"	8.95 A	DP 22214	
IS III DP 22214	IS I DP 22214	ob40	291°51'28"	A DP 22214	-0°00'32"	39.38 A	DP 22214	
NAIL I DP 582425	PIN III DP 582425	ob9	292°02'00"	M		49.88 M		
PIN III DP 582425	PIN IV DP 582425	ob41	201°13'00"	M		14.56 M		
PIN IV DP 582425	NAIL II DP 582425	ob45	111°02'40"	M		49.77 M		
IR II DP 19129	BD IIb DP 582425	ob29	18°35'58"	A DP 19129	-0°00'32"	18.97 A	DP 19129	
UNMK 1 DP 582425	BD IVa DP 582425	ob60	291°39'10"	A DP 19129	-0°00'32"	38.88 C		Class A
BD IVa DP 582425	NAIL DP 19129	ob48	291°39'10"	A DP 19129	-0°00'32"	50.28 C		
NAIL DP 19129	IR V DP 19129	ob50	284°36'28"	A DP 19129	-0°00'32"	1.73 A	DP 19129	
IS I DP 22214	NAIL (Ib) DP 22214	ob17	140°31'58"	A DP 22214	-0°00'32"	21.83 A	DP 22214	
NAIL (Ib) DP 22214	PEG (Vb) DP 22214	ob51	111°39'10"	A DP 22214	-0°00'32"	50.27 A	DP 22214	
PEG (Vb) DP 22214	PEG (Va) DP 22214	ob52	21°39'10"	A DP 22214	-0°00'32"	20.16 A	DP 22214	
PEG (Va) DP 22214	IS V DP 22214	ob57	252°20'58"	A DP 22214	-0°00'32"	4.62 A	DP 22214	
IS I DP 22214	NAIL (Ia) DP 22214	ob18	84°55'58"	A DP 22214	-0°00'32"	21.40 A	DP 22214	
NAIL (Ia) DP 22214	PEG (Va) DP 22214	ob54	111°39'10"	A DP 22214	-0°00'32"	50.27 A	DP 22214	
NAIL (Ia) DP 22214	IS II DP 2328	ob55	21°39'10"	C		20.17 C		
IS II DP 2328	UNMK SO 14196	ob56	111°39'10"	C		100.57 C		
UNMK SO 14196	PEG IIa DP 582425	ob58	201°39'10"	C		40.33 C		
BD IVa DP 582425	PEG (Vb) DP 22214	ob49	21°38'00"	C		20.16 C		Class A
PEG (Vb) DP 22214	PEG IIa DP 582425	ob53	111°39'10"	C		50.29 C		Class A
PIN III DP 582425	IT VI DP 22214	ob42	326°25'00"	M		3.25 M		
PIN III DP 582425	IR IV DP 19129	ob43	209°01'00"	M		19.68 M		
NAIL II DP 582425	PEG IIa DP 582425	ob11	17°55'00"	M		15.36 M		

Mark and Vector

Survey Number DP 582425

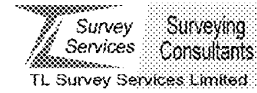
Meridional Circuit North Taieri 2000

From	To	Code	Bearing	Adpt Surv	Bearing Correction	Distance	Adpt Surv	Class
NAIL II DP 582425	BD IIb DP 582425	ob12	213°20'00"	M		4.94 M		
PIN IV DP 582425	BD IVa DP 582425	ob46	221°06'00"	M		4.56 M		
PIN III DP 582425	PEG (Vb) DP 22214	ob44	334°00'00"	M		1.92 M		
UNMK 2 DP 582425	BD IIb DP 582425	ob62	201°39'10"	C		3.00 C		Class A
BD IIb DP 582425	UNMK 1 DP 582425	ob47	291°39'10"	A	DP 19129	-0°00'32"	11.40 C	Class A
PEG IIa DP 582425	UNMK 2 DP 582425	ob59	201°39'10"	C		17.16 C		Class A
UNMK 1 DP 582425	UNMK 3 DP 582425	ob61	21°39'10"	C		4.00 C		Class A
UNMK 5 DP 582425	UNMK 2 DP 582425	ob65	111°39'10"	C		9.30 C		Class A
UNMK 4 DP 582425	UNMK 5 DP 582425	ob64	201°39'10"	C		1.00 C		Class A
UNMK 3 DP 582425	UNMK 4 DP 582425	ob63	111°39'10"	C		2.10 C		Class A

Mark Name	Mark Condition	Description
BD IVa DP 582425		on fence rail
IR IV DP 19129		0.3d below edge of conc path
IT 1 DP 468836		in position of IS DP 24416
IT VI DP 22214		0.2d in grass
NAIL (Ia) DP 22214		nail in conc
NAIL (Ib) DP 22214		nail in path
NAIL DP 19129		nail in conc
NAIL I DP 582425		Flush in asphalt
NAIL II DP 582425		Flush in asphalt
PIN III DP 582425		flush in conc
PIN IV DP 582425		flush in conc
SS 2H NO 2 SO 47722		in position of 2H ST 4
SS 2L NO 2 SO 47722		in position of SS 2L ST 4
3L ST 4	Searched For and Not Found	
IR II DP 19129	Searched For and Not Found	

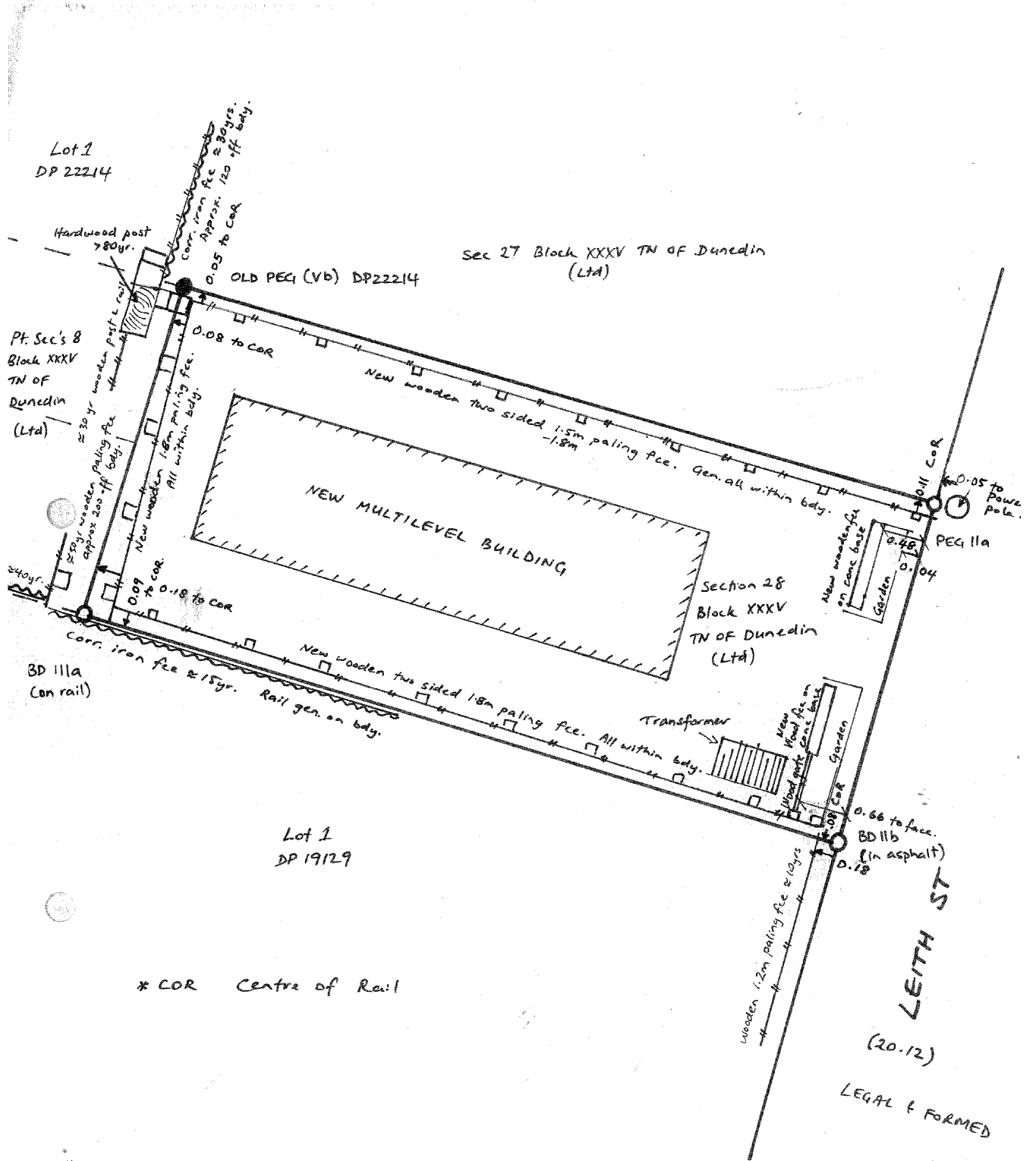
*** End of Report ***

Easement Schedule - DP 582425



SCHEDULE OF EASEMENTS IN GROSS			
SHOWN	PURPOSE	SERVIENT TENEMENT (Burdened Land)	GRANTEE
A	Right to convey electricity	Lot 1 DP 582425	Aurora Energy Ltd
A	Right to transform electricity	Lot 1 DP 582425	Aurora Energy Ltd

Occupation Diagram



* COR Centre of Rail

Not to Scale

OCCUPATION DIAGRAM 488 LEITH ST.

Survey Services **Surveying Consultants**
TL Survey Services Limited

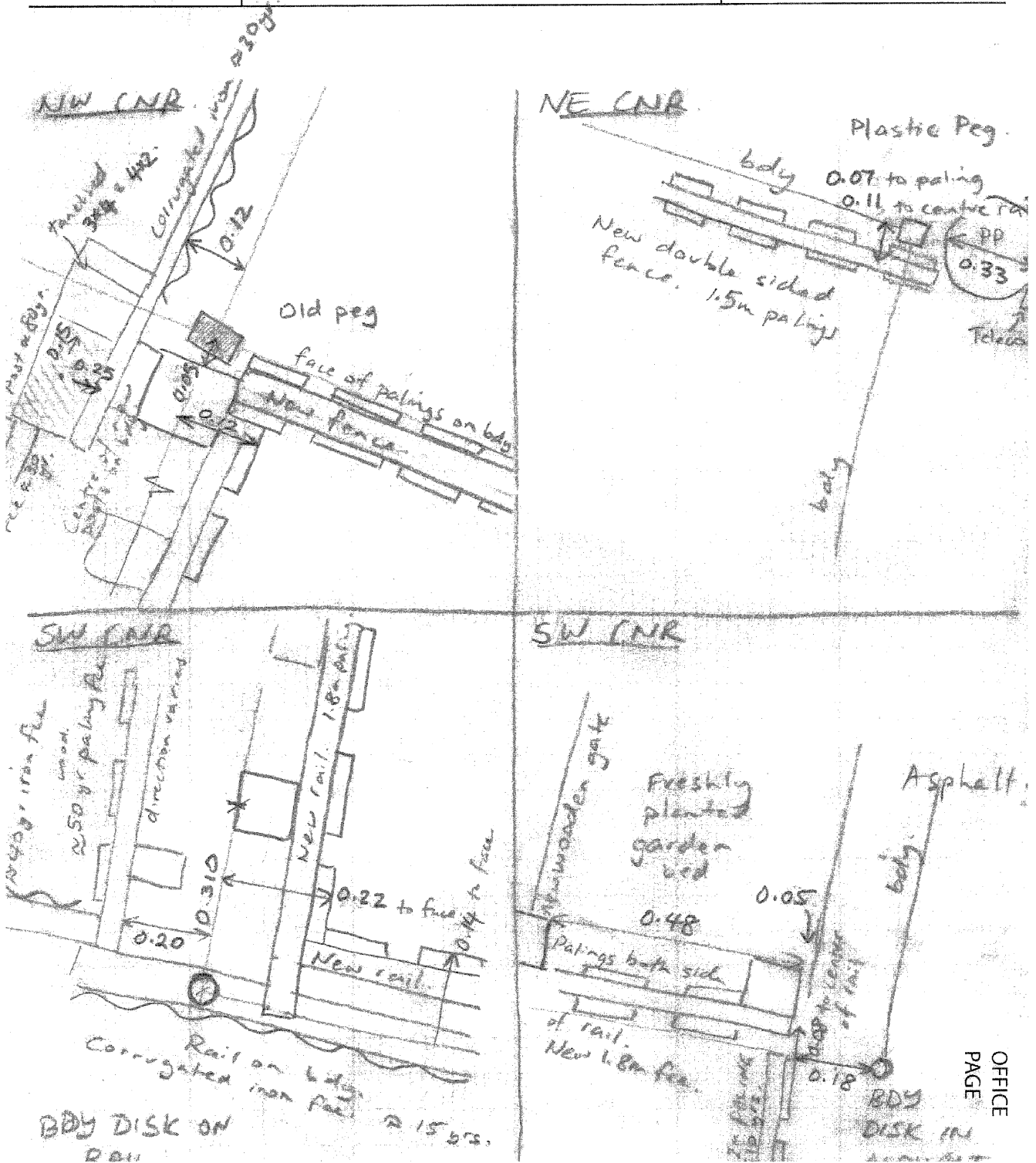


488 LEITH ST LT SURVEY
OCCUPATION DIAGRAMS.

FB NO.

JOB NO.

SURVEYOR'S PAGE 1	SURVEYOR L BISHOP	DATE PLAN NO.
----------------------	----------------------	------------------



OFFICE
PAGE



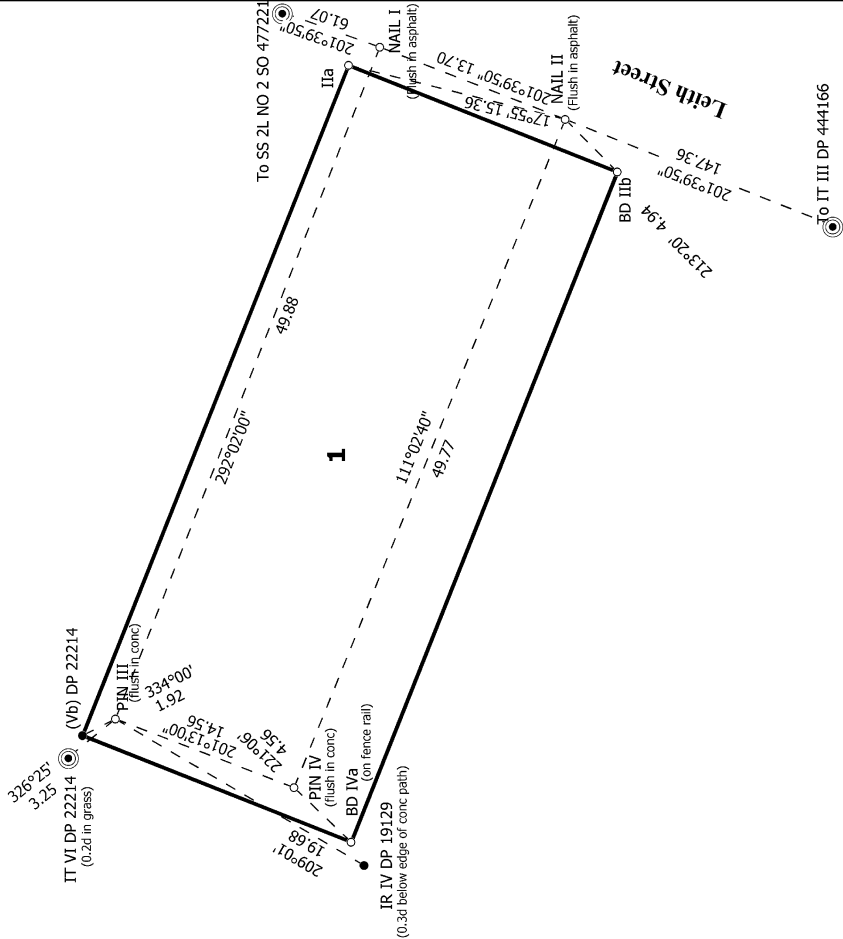
Lot 1 being Section 28 Block XXXV TN OF Dunedin

Surveyor: Mark Peter Robert Geddes
 Firm: TL Survey Services Ltd
 Date of Survey: 12/09/2022

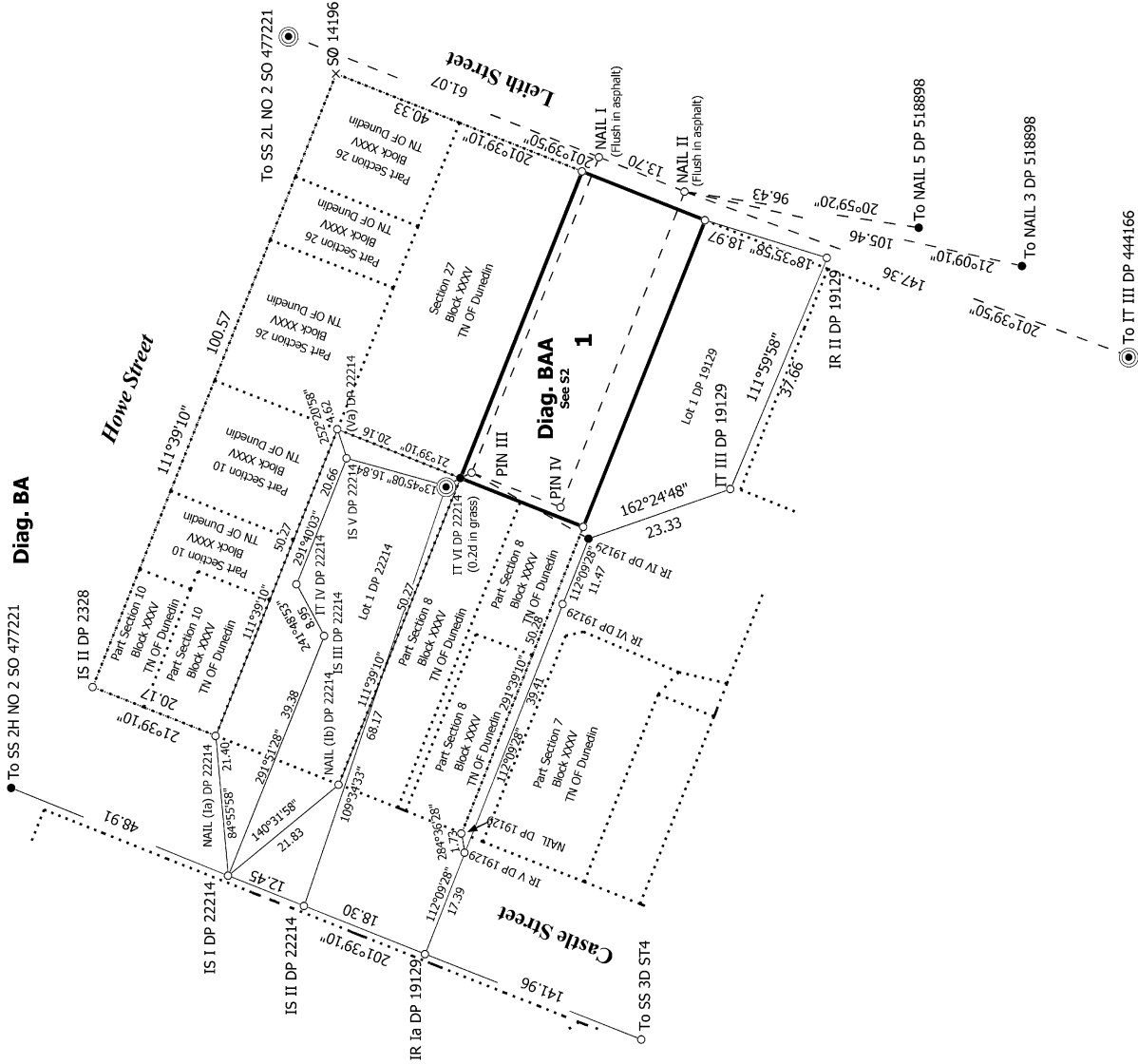
Record of Survey
 DP 582425
 Deposited on: 25/10/2023



Diag. BAA



Diag. BA



S 2/2

Land District: Otago

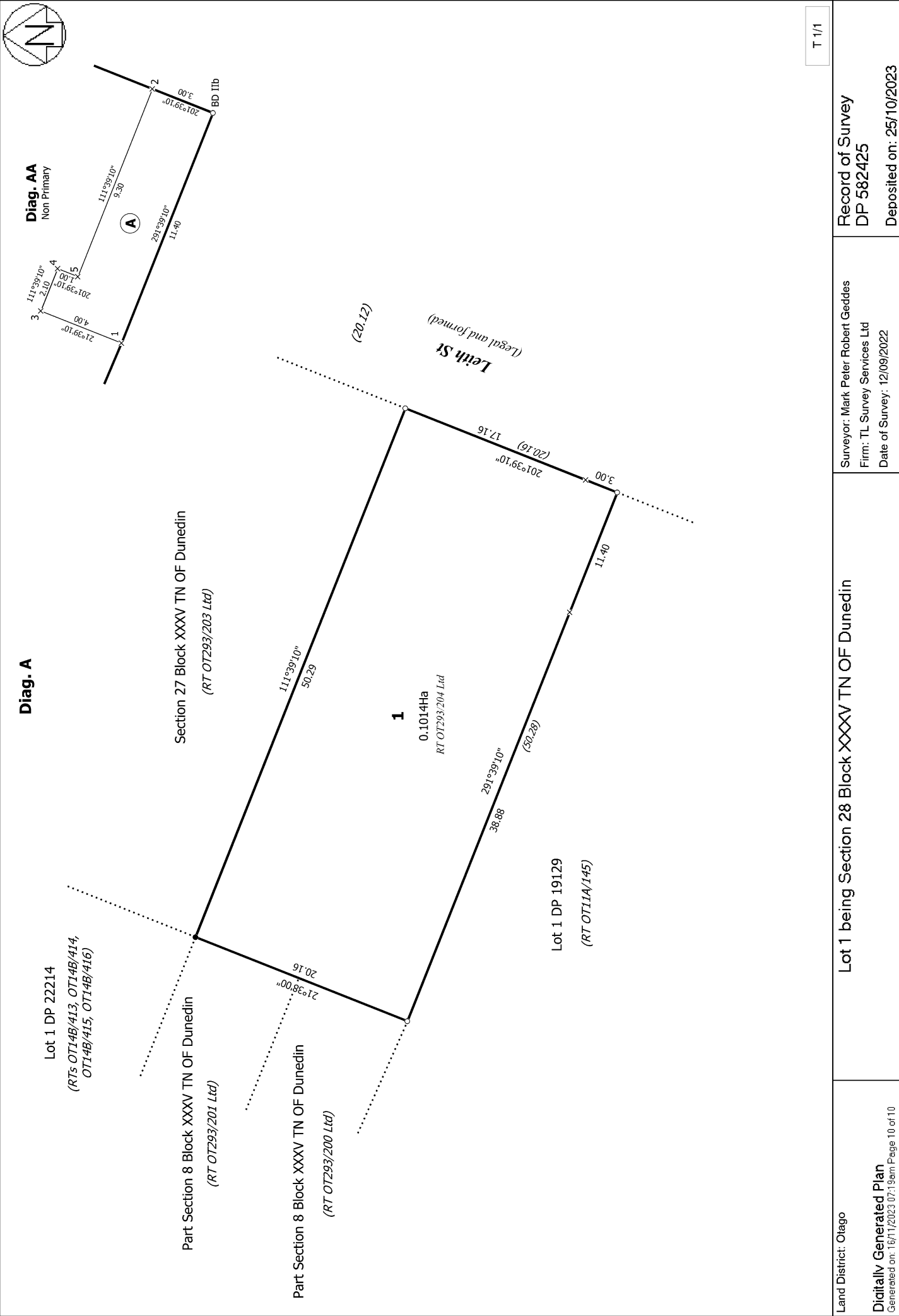
Digitally Generated Plan
Generated on: 16/11/2023 07:19am Page 9 of 10

Lot 1 being Section 28 Block XXXV TN OF Dunedin

Surveyor: Mark Peter Robert Geddes
Firm: TL Survey Services Ltd
Date of Survey: 12/09/2022

Record of Survey
DP 582425

Deposited on: 25/10/2023



Diag. A

Diag. AA
Non Primary

T 1/1

Land District: Otago

Digitally Generated Plan

Generated on: 16/11/2023 07:19am Page 10 of 10

Lot 1 being Section 28 Block XXXV TN OF Dunedin

Surveyor: Mark Peter Robert Geddes
Firm: TL Survey Services Ltd
Date of Survey: 12/09/2022

Record of Survey
DP 582425

Deposited on: 25/10/2023