

Record of Survey - DP 582117

Survey Number DP 582117
Surveyor Reference 214186GB - 249 & 251 Hurstmere Road
Surveyor Brendan John Bates
Survey Firm A I Bates and Associates (2004) Ltd (Auckland)
Surveyor Declaration I Brendan John Bates, being a licensed cadastral surveyor, certify that--
 (a) this dataset provided by me and its related survey are accurate, correct and in accordance with the Cadastral Survey Act 2002 and Cadastral Survey Rules 2021; and
 (b) the survey was undertaken by me or under my personal direction.
 Declared on 01 Mar 2023 09:08 AM

Survey Details

Dataset Description Lots 1, 2, 100 & 101 being a Subdivision of Lot 1 DP 25627 & Lot 4 DP 7523
Purpose LT Subdivision
Status Deposited **Type** Survey
Land District North Auckland **Survey Class** Class A
Meridional Circuit Mount Eden 2000 **Vertical Datum** Auckland 1946

Survey Dates

Surveyed Date 05/09/2022 **Certified Date** 01/03/2023
Submitted Date 01/03/2023 09:08:10 **Survey Approval Date** 01/03/2023
Deposit Date 20/06/2023

Referenced Surveys

Survey Number	Land District	Bearing Correction
SO 461636	North Auckland	0°00'00"
DP 25627	North Auckland	0°00'00"
DP 7523	North Auckland	0°00'00"
SO 57754	North Auckland	0°00'00"
SO 52729	North Auckland	0°00'00"
DP 328065	North Auckland	0°00'00"

Territorial Authorities

Auckland Council

Comprised In

RT NA662/171
 RT NA48D/415
 RT NA48D/518
 RT NA48D/416

Created Parcels

Parcels	Parcel Intent	Area	RT Reference
Area E Deposited Plan 582117	Easement		
Area A Deposited Plan 582117	Easement		
Area B Deposited Plan 582117	Easement		



Record of Survey - DP 582117

Created Parcels

Parcels	Parcel Intent	Area	RT Reference
Area C Deposited Plan 582117	Easement		
Area D Deposited Plan 582117	Easement		
Lot 1 Deposited Plan 582117	Fee Simple Title	0.0569 Ha	1088263
Lot 2 Deposited Plan 582117	Fee Simple Title	0.1088 Ha	1088264
Area F Deposited Plan 582117	Easement		
Area H Deposited Plan 582117	Easement		
Lot 100 Deposited Plan 582117	Vesting on Deposit for Local Purpose Reserve	0.0167 Ha	1101105
Lot 101 Deposited Plan 582117	Common Marine and Coastal Area (Sec 237A(1)(b) RM Act)	0.0013 Ha	
Area G Deposited Plan 582117	Easement		
Total Area		<hr/> 0.1837 Ha	

Mark and Vector

Survey Number DP 582117

Meridional Circuit Mount Eden 2000

From	To	Code	Bearing	Adpt Surv	Bearing Correction	Distance	Adpt Surv	Class
DISK 25 DP 582117	IS 61 DP 582117	ob0	281°10'00"	A DP 7523	0°00'00"	5.11 C		Class A
PEG (11) SO 57754	PEG IV DP 25627	ob4	98°39'00"	A DP 25627	0°00'00"	19.64 A	DP 25627	Class A
PEG (19) SO 57754	PEG (16) SO 57754	ob2	191°10'00"	A DP 25627	0°00'00"	15.60 A	DP 25627	Class A
PEG V DP 25627	PEG (19) SO 57754	ob5	101°10'00"	A DP 25627	0°00'00"	14.76 A	DP 25627	Class A
PEG IV DP 25627	PEG V DP 25627	ob6	94°37'00"	A DP 25627	0°00'00"	11.41 A	DP 25627	Class A
AP 6 SO 461636	AP IV DP 582117	ob11	192°15'20"	M		28.86 M		
AP 2 SO 461636	AP 6 SO 461636	ob8	18°33'30"	M		121.23 M		
IS 61 DP 582117	PEG XX DP 7523	ob44	281°10'00"	A DP 7523	0°00'00"	7.97 C		Class A
DISK 37 DP 582117	DISK 38 DP 582117	ob32	101°10'00"	C		9.05 C		Class A
DISK 37 DP 582117	UNMK 44 DP 582117	ob33	191°10'09"	A DP 7523	0°00'00"	1.00 C		Class A
UNMK 44 DP 582117	UNMK 45 DP 582117	ob37	101°10'00"	C		10.05 C		Class A
UNMK 45 DP 582117	UNMK 67 DP 582117	ob39	11°10'00"	C		7.29 C		Class A
UNMK 44 DP 582117	PEG (11) SO 57754	ob38	191°10'09"	A DP 7523	0°00'00"	3.21 C		Class A
UNMK 43 DP 582117	UNMK 39 DP 582117	ob36	11°00'00"	C		3.03 C		Class A
DISK 147 DP 582117	PEG (3) DP 7523	ob41	281°10'00"	A DP 7523	0°00'00"	2.38 C		Class A
PEG (3) DP 7523	PEG 47 DP 582117	ob7	281°10'00"	A DP 7523	0°00'00"	24.68 C		Class A
UNMK 146 DP 582117	DISC 2 DP 349323	ob40	281°10'00"	A DP 7523	0°00'00"	33.64 C		Class A
UNMK 39 DP 582117	UNMK 146 DP 582117	ob35	281°10'00"	A DP 7523	0°00'00"	10.00 C		Class A
PEG 62 DP 582117	UNMK 176 DP 582117	ob45	101°10'00"	C		18.98 C		Class A
PEG 62 DP 582117	PEG 63 DP 582117	ob46	191°10'00"	C		1.00 C		Class A
DISK 38 DP 582117	DISK 64 DP 582117	ob34	11°10'00"	C		6.29 C		Class A
PEG 65 DP 582117	PEG 66 DP 582117	ob49	11°10'00"	C		2.22 C		Class A
UNMK 67 DP 582117	PEG 65 DP 582117	ob51	101°10'00"	C		0.97 C		Class A
DISK 64 DP 582117	UNMK 68 DP 582117	ob47	8°20'00"	C		1.00 C		Class A

Mark and Vector

Survey Number DP 582117

Meridional Circuit Mount Eden 2000

From	To	Code	Bearing	Adpt Surv	Bearing Correction	Distance	Adpt Surv	Class
UNMK 71 DP 582117	UNMK 72 DP 582117	ob55	11°08'00"	C		1.00 C		Class A
UNMK 70 DP 582117	UNMK 73 DP 582117	ob54	101°05'00"	C		3.67 C		Class A
UNMK 71 DP 582117	UNMK 43 DP 582117	ob56	101°10'00"	C		5.49 C		Class A
UNMK 175 DP 582117	UNMK 146 DP 582117	ob59	11°00'00"	C		2.03 C		Class A
UNMK 176 DP 582117	UNMK 175 DP 582117	ob61	11°00'00"	C		1.00 C		Class A
UNMK 73 DP 582117	UNMK 74 DP 582117	ob57	11°10'00"	C		1.00 C		Class A
UNMK 74 DP 582117	UNMK 175 DP 582117	ob58	101°10'00"	C		19.98 C		Class A
UNMK 68 DP 582117	UNMK 69 DP 582117	ob52	101°07'00"	C		1.00 C		Class A
UNMK 69 DP 582117	UNMK 70 DP 582117	ob53	11°05'00"	C		2.21 C		Class A
PEG 66 DP 582117	PEG 63 DP 582117	ob50	101°10'00"	C		3.65 C		Class A
DISK 64 DP 582117	UNMK 67 DP 582117	ob48	101°10'00"	C		1.00 C		Class A
UNMK 175 DP 582117	UNMK 72 DP 582117	ob60	101°10'00"	C		4.51 C		Class A
UNMK 176 DP 582117	UNMK 71 DP 582117	ob62	101°10'00"	C		4.51 C		Class A
IT IV SO 52729	IS V SO 52729	ob18	89°38'00"	A SO 52729	0°00'00"	36.28 A SO 52729		
RM 5903 SO 55315	RM 5904 SO 55315	ob13	0°24'51"	M		248.60 M		
IS I SO 57754	DISC 2 DP 349323	ob22	47°13'00"	A SO 57754	0°00'00"	3.59 A SO 57754		
IS I SO 57754	PEG (11) SO 57754	ob23	182°29'00"	A SO 57754	0°00'00"	14.00 A SO 57754		
IT IV SO 52729	PEG (16) SO 57754	ob19	323°08'00"	A SO 57754	0°00'00"	4.40 A SO 57754		
IS V SO 52729	IT IV SO 57754	ob20	25°26'00"	A SO 57754	0°00'00"	7.36 A SO 57754		
IS I SO 57754	BP II SO 57754	ob24	98°04'20"	A SO 57754	0°00'00"	30.94 A SO 57754		
IS V SO 52729	RM 5903 SO 55315	ob21	148°47'00"	A DP 328065	0°00'00"	32.01 A DP 328065		
RM 617B SO 55315	IS I SO 57754	ob10	186°15'40"	A SO 57754	0°00'00"	43.30 A SO 57754		
AP 6 SO 461636	AP I SO 461636	ob12	198°41'40"	M		119.09 M		
PEG XX DP 7523	UNMK 39 DP 582117	ob64	281°10'00"	A DP 7523	0°00'00"	20.37 C		Class A
PEG XX DP 7523	PEG (3) DP 7523	ob65	170°35'00"	A DP 7523	0°00'00"	32.27 A DP 7523		

Mark and Vector

Survey Number DP 582117

Meridional Circuit Mount Eden 2000

From	To	Code	Bearing	Adpt Surv	Bearing Correction	Distance	Adpt Surv	Class
RM 5903 SO 55315	IB 2 DP 328065	ob14	304°21'00"	A DP 328065	0°00'00"	85.69 A	DP 328065	
IB 2 DP 328065	BS 1 DP 328065	ob16	236°53'00"	A DP 328065	0°00'00"	44.74 A	DP 328065	
BS 1 DP 328065	RM 617B SO 55315	ob17	10°25'30"	A DP 328065	0°00'00"	87.25 A	DP 328065	
BP II SO 57754	BP III SO 57754	ob63	99°29'00"	A SO 57754	0°00'00"	26.43 A	SO 57754	
IT IV SO 57754	BP III SO 57754	ob26	311°33'00"	A SO 57754	0°00'00"	36.11 A	SO 57754	
AP I DP 582117	AP II DP 582117	ob66	96°13'30"	M		36.70 M		
AP I DP 582117	AP 2 SO 461636	ob67	201°54'10"	M		79.40 M		
AP IV DP 582117	BP II SO 57754	ob29	98°43'40"	M		31.71 M		
AP VI DP 582117	BP III SO 57754	ob95	100°47'00"	M		25.68 M		
AP III DP 582117	IS 61 DP 582117	ob71	328°10'00"	M		12.68 M		
AP VII DP 582117	DISK 147 DP 582117	ob97	144°09'20"	M		43.10 M		
AP I DP 582117	DISK 38 DP 582117	ob68	85°29'00"	M		12.67 M		
AP VI DP 582117	AP VII DP 582117	ob96	101°45'20"	M		16.69 M		
AP VII DP 582117	AP III DP 582117	ob98	114°58'40"	M		35.46 M		
AP II DP 582117	AP III DP 582117	ob70	96°53'20"	M		47.35 M		
AP IV DP 582117	AP I DP 582117	ob30	192°15'20"	M		13.36 M		
AP 2 SO 461636	AP I SO 461636	ob9	11°13'00"	M		2.17 M		
AP IV DP 582117	AP V DP 582117	ob31	97°41'00"	M		13.07 M		
AP V DP 582117	AP VI DP 582117	ob99	97°41'00"	M		19.41 M		
AP V DP 582117	PEG 65 DP 582117	ob100	180°08'00"	M		4.52 M		
AP V DP 582117	PEG 66 DP 582117	ob101	169°52'00"	M		2.38 M		
AP V DP 582117	PEG 62 DP 582117	ob102	116°15'00"	M		4.68 M		
AP V DP 582117	PEG 63 DP 582117	ob103	127°19'00"	M		5.03 M		
AP V DP 582117	DISK 64 DP 582117	ob104	205°08'00"	M		4.57 M		
AP I DP 582117	DISK 37 DP 582117	ob69	53°46'00"	M		4.65 M		
AP III DP 582117	RM 5903 SO 55315	ob72	158°49'10"	M		47.63 M		

Mark and Vector

Survey Number DP 582117

Meridional Circuit Mount Eden 2000

From	To	Code	Bearing	Adpt Surv	Bearing Correction	Distance	Adpt Surv	Class
RM 5903 SO 55315	IT IV SO 57754	ob15	338°27'30"	M		36.57 M		
DISK 147 DP 582117	UNMK 385 DP 582117	ob42	12°25'00"	C		0.99 C		Class A
DISK 84 DP 582117	DISK 83 DP 582117	ob114	63°21'00"	C		3.26 C		Class A
AP III DP 582117	DISK 75 DP 582117	ob73	312°09'00"	M		9.07 M		
AP III DP 582117	DISK 76 DP 582117	ob74	264°41'00"	M		6.83 M		
AP III DP 582117	DISK 77 DP 582117	ob75	239°27'00"	M		6.76 M		
AP III DP 582117	DISK 78 DP 582117	ob76	208°17'00"	M		6.64 M		
AP III DP 582117	DISK 79 DP 582117	ob77	191°12'00"	M		6.74 M		
AP III DP 582117	DISK 80 DP 582117	ob78	179°52'00"	M		7.78 M		
AP III DP 582117	DISK 81 DP 582117	ob79	177°22'00"	M		10.92 M		
AP III DP 582117	DISK 82 DP 582117	ob80	178°06'00"	M		11.73 M		
AP III DP 582117	DISK 83 DP 582117	ob81	182°32'00"	M		12.88 M		
AP III DP 582117	DISK 84 DP 582117	ob82	193°40'00"	M		14.74 M		
AP III DP 582117	DISK 85 DP 582117	ob83	190°07'00"	M		15.54 M		
AP III DP 582117	DISK 87 DP 582117	ob84	198°02'00"	M		16.73 M		
AP III DP 582117	DISK 86 DP 582117	ob85	193°51'00"	M		17.24 M		
AP III DP 582117	DISK 88 DP 582117	ob86	200°13'00"	M		17.96 M		
UNMK 385 DP 582117	DISK 88 DP 582117	ob119	12°25'00"	C		2.20 C		Class A
UNMK 385 DP 582117	UNMK 56 DP 582117	ob120	77°26'00"	C		8.69 C		Class AD
PEG 47 DP 582117	UNMK 48 DP 582117	ob122	5°00'00"	C		1.00 C		Class A
UNMK 48 DP 582117	UNMK 385 DP 582117	ob124	101°09'30"	C		27.19 C		Class A
UNMK 48 DP 582117	DISK 46 DP 582117	ob125	5°00'00"	C		26.33 C		Class A
AP III DP 582117	DISK 46 DP 582117	ob87	291°55'20"	M		33.48 M		
AP III DP 582117	PEG 47 DP 582117	ob88	246°14'20"	M		36.54 M		

Mark and Vector

Survey Number DP 582117

Meridional Circuit Mount Eden 2000

From	To	Code	Bearing	Adpt Surv	Bearing Correction	Distance	Adpt Surv	Class
UNMK 57 DP 582117	DISK 75 DP 582117	ob128	0°40'00"	C		3.77 C		Class A
UNMK 57 DP 582117	UNMK 59 DP 582117	ob129	99°28'00"	C		7.18 C		Class A
UNMK 58 DP 582117	UNMK 57 DP 582117	ob130	0°40'00"	C		1.52 C		Class A
UNMK 58 DP 582117	UNMK 60 DP 582117	ob131	99°28'00"	C		7.42 C		Class A
IT IV SO 57754	UNMK 56 DP 582117	ob27	196°20'00"	C		7.00 C		
AP III DP 582117	DISK 25 DP 582117	ob89	350°17'00"	M		9.93 M		
DISK 25 DP 582117	AP 27 DP 582117	ob1	165°36'00"	C		6.88 C		Class A
AP 30 DP 582117	AP 34 DP 582117	ob136	172°44'00"	C		2.41 C		Class A
UNMK 59 DP 582117	UNMK 60 DP 582117	ob132	172°05'00"	C		1.57 C		Class A
UNMK 60 DP 582117	AP 28 DP 582117	ob133	172°05'00"	C		5.38 C		Class A
AP III DP 582117	AP 27 DP 582117	ob90	0°41'00"	M		3.12 M		
AP III DP 582117	AP 28 DP 582117	ob91	167°30'00"	M		5.89 M		
AP III DP 582117	AP 30 DP 582117	ob92	171°25'00"	M		8.53 M		
AP III DP 582117	AP 34 DP 582117	ob93	171°42'00"	M		10.94 M		
AP III DP 582117	AP 53 DP 582117	ob94	171°10'00"	M		13.37 M		
PEG 47 DP 582117	PEG 5 DP 7523	ob123	281°10'00"	A	DP 25627	0°00'00"	0.39 C	Class A
AP 28 DP 582117	AP 30 DP 582117	ob135	180°05'00"	C		2.68 C		Class A
AP 34 DP 582117	AP 53 DP 582117	ob137	168°49'00"	C		2.44 C		Class A
AP 27 DP 582117	UNMK 59 DP 582117	ob134	172°05'00"	C		2.01 C		Class A
DISK 75 DP 582117	IS 61 DP 582117	ob105	0°24'00"	C		4.69 C		Class A
DISK 46 DP 582117	UNMK 43 DP 582117	ob121	281°10'00"	C		4.10 C		Class A
DISK 88 DP 582117	DISK 87 DP 582117	ob118	47°25'00"	C		1.39 C		Class A
DISK 87 DP 582117	DISK 86 DP 582117	ob117	128°10'00"	C		1.34 C		Class A
DISK 86 DP 582117	DISK 85 DP 582117	ob116	44°08'00"	C		2.01 C		Class A

Mark and Vector

Survey Number DP 582117

Meridional Circuit Mount Eden 2000

From	To	Code	Bearing	Adpt Surv	Bearing Correction	Distance	Adpt Surv	Class
DISK 85 DP 582117	DISK 84 DP 582117	ob115	322°14'00"	C		1.23 C		Class A
DISK 83 DP 582117	DISK 82 DP 582117	ob113	39°54'00"	C		1.49 C		Class A
DISK 82 DP 582117	DISK 81 DP 582117	ob112	7°56'00"	C		0.82 C		Class A
DISK 81 DP 582117	DISK 80 DP 582117	ob111	351°11'00"	C		3.16 C		Class A
DISK 80 DP 582117	DISK 79 DP 582117	ob110	311°29'00"	C		1.77 C		Class A
DISK 79 DP 582117	DISK 78 DP 582117	ob109	292°44'00"	C		1.99 C		Class A
DISK 78 DP 582117	DISK 77 DP 582117	ob108	311°59'00"	C		3.60 C		Class A
DISK 77 DP 582117	DISK 76 DP 582117	ob107	340°37'00"	C		2.97 C		Class A
DISK 76 DP 582117	UNMK 58 DP 582117	ob106	0°40'00"	C		1.43 C		Class A
IT IV SO 57754	UNMK 54 DP 582117	ob28	192°46'00"	C		11.46 C		
UNMK 54 DP 582117	LP (100) SO 57754	ob127	101°10'00"	A DP 7523	0°00'00"	4.42 C		Class AD
LP (100) SO 57754	IT IV SO 57754	ob138	351°28'00"	A SO 57754	0°00'00"	12.17 A SO 57754		
DISC 2 DP 349323	UNMK 193 DP 582117	ob3	191°10'09"	A DP 7523	0°00'00"	3.04 C		Class A
UNMK 193 DP 582117	UNMK 192 DP 582117	ob139	191°10'09"	A DP 7523	0°00'00"	2.21 C		Class A
UNMK 192 DP 582117	DISK 37 DP 582117	ob141	191°10'09"	A DP 7523	0°00'00"	7.28 C		Class A
UNMK 193 DP 582117	UNMK 70 DP 582117	ob140	101°05'00"	C		10.00 C		Class A
UNMK 192 DP 582117	UNMK 68 DP 582117	ob142	101°05'00"	C		9.00 C		Class A
DISK 147 DP 582117	ABD (461) DP 328065	ob43	101°10'00"	A DP 7523	0°00'00"	6.47 C		Class A
PEG 5 DP 7523	PEG (16) SO 57754	ob143	281°10'00"	A DP 25627	0°00'00"	4.57 C		Class A
AP 53 DP 582117	UNMK 460 DP 582117	ob126	161°44'00"	C		0.14 C		Class AD
IT IV SO 57754	UNMK 460 DP 582117	ob25	209°37'20"	C		3.40 C		
ABD (461) DP 328065	UNMK 54 DP 582117	ob144	101°10'00"	A DP 7523	0°00'00"	1.82 C		Class AD

Mark Name	Mark Condition	Description
AP 2 SO 461636		flush in conc v-xing

Mark and Vector

Survey Number DP 582117
Meridional Circuit Mount Eden 2000

Mark Name	Mark Condition	Description
AP 27 DP 582117		in conc f/path
AP 28 DP 582117		in conc f/path
AP 30 DP 582117		in conc f/path
AP 34 DP 582117		in conc f/path
AP 53 DP 582117		MHWS Mark A in rock
AP II DP 582117		flush in conc step
AP III DP 582117		flush in conc footpath
AP IV DP 582117		flush in conc v-xing
AP V DP 582117		flush in conc fpath
AP VI DP 582117		flush in conc fpath
AP VII DP 582117		flush in conc fpath
DISK 147 DP 582117		in rock wall conc fting
DISK 25 DP 582117		in conc f/path
DISK 37 DP 582117		in conc drive
DISK 38 DP 582117		in conc drive
DISK 46 DP 582117		on top of conc RTW
DISK 64 DP 582117		in conc ftg
DISK 75 DP 582117		in conc ftg
DISK 76 DP 582117		in conc ftg
DISK 77 DP 582117		in conc ftg
DISK 78 DP 582117		in conc ftg
DISK 79 DP 582117		in conc ftg
DISK 80 DP 582117		in conc ftg
DISK 81 DP 582117		in conc ftg
DISK 82 DP 582117		in conc ftg
DISK 83 DP 582117		in conc ftg
DISK 84 DP 582117		in conc ftg
DISK 85 DP 582117		in conc ftg
DISK 86 DP 582117		in conc ftg
DISK 87 DP 582117		in conc ftg
DISK 88 DP 582117		in conc ftg
IS 61 DP 582117		in rock wall ftg
PEG (11) SO 57754		Alumnium Peg
PEG (16) SO 57754		Alumnium Peg
PEG (19) SO 57754		Alumnium Peg



Mark and Vector

Survey Number DP 582117

Meridional Circuit Mount Eden 2000

Mark Name	Mark Condition	Description
UNMK 56 DP 582117		MHWS Mark B
IS I SO 57754	Searched For and Not Found	
RM 617B SO 55315	Searched For and Not Found	

*** End of Report ***

Schedule / Memorandum

Land Registration District

NORTH AUCKLAND

Plan Number

DP 582117

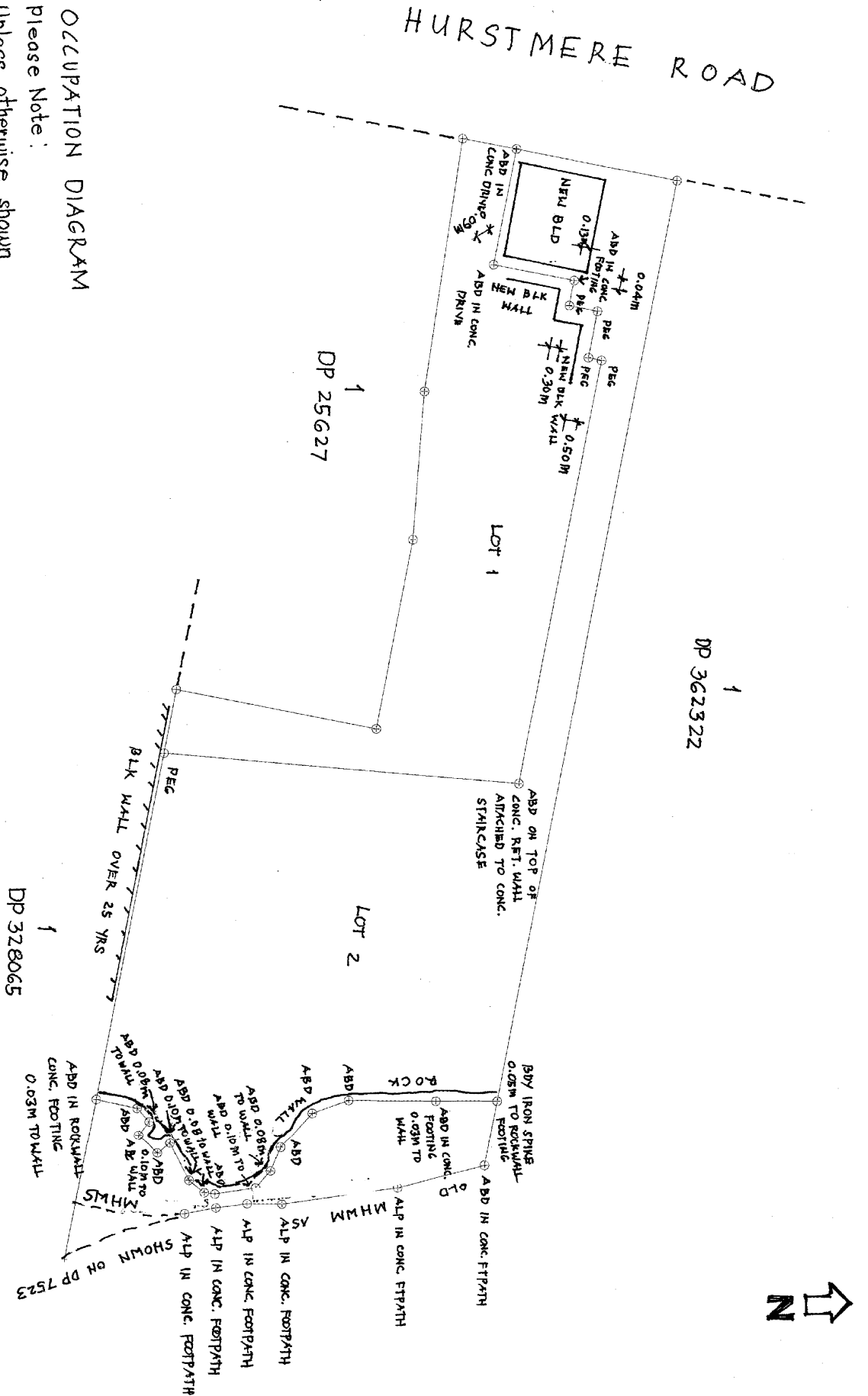
Territorial Authority (the Council)

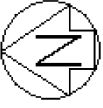
AUCKLAND COUNCIL

Memorandum of Easements (Pursuant to s243 Resource Management Act 1991)			
Purpose	Shown	Burdened Land (Servient Tenement)	Benefited Land (Dominant Tenement)
Right to drain water & Maintenance	A	Lot 1	Lot 2
Right to convey water, electricity & Maintenance	B	Lot 2	Lot 1
Maintenance	C		
Right to drain sewage	C & D	Lot 2	Lot 1
Right to convey water & electricity	E		
Right to drain water	F	Lot 2	Lot 1
Right to drain water	G	Lot 100	Lots 1 & 2
Right to drain water & Right to drain sewage	H		Lot 2

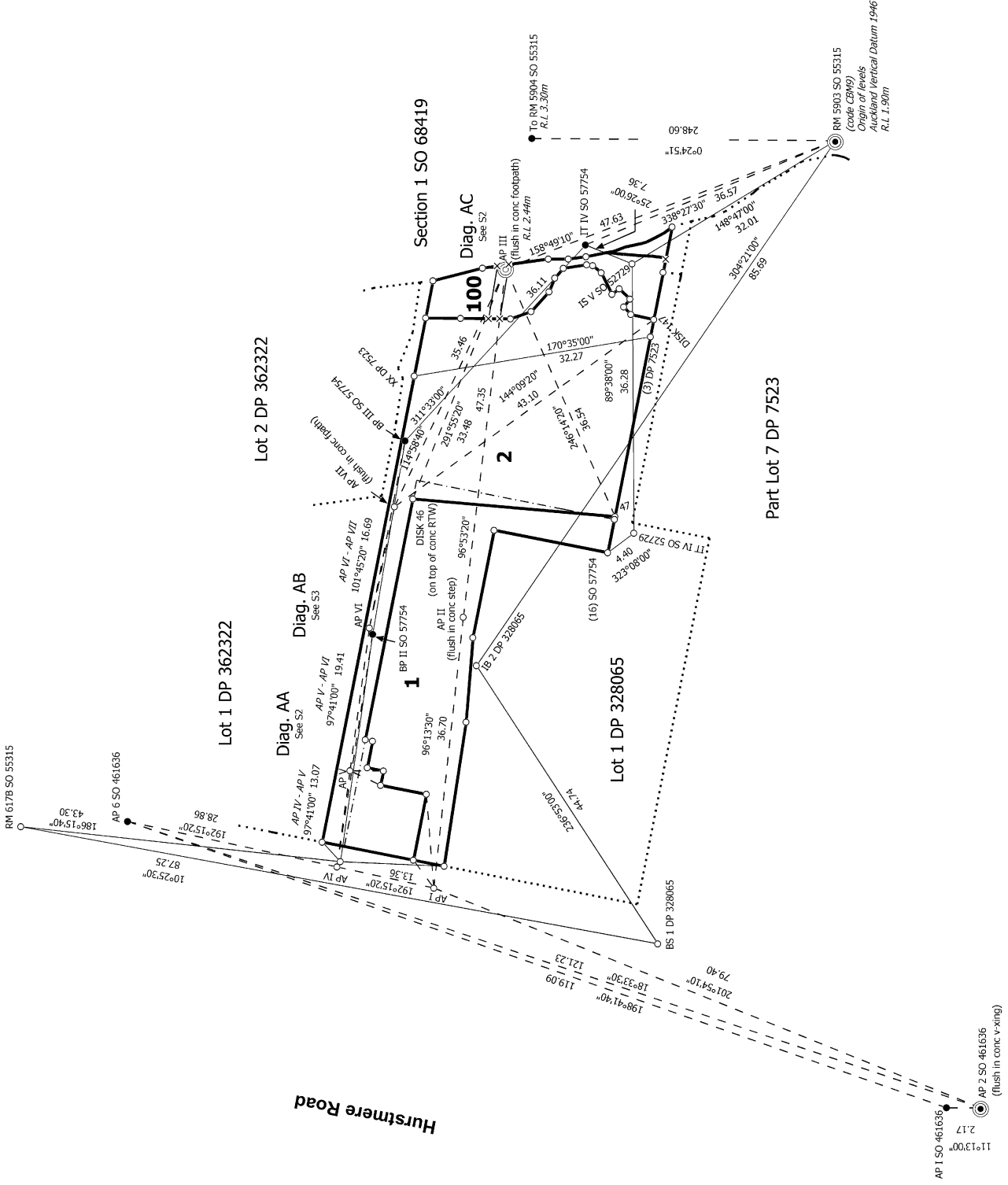
Occupation Diagram

OCCUPATION DIAGRAM
 please Note:
 Unless otherwise shown
 boundaries are not occupied
 Unless otherwise shown ABD next to
 50 year old rock wall 0.05m to wall





Diag. A



S 1/3

Land District: North Auckland

Digitally Generated Plan

Generated on: 07/07/2023 09:37am | Page 13 of 17

Lots 1, 2, 100 & 101 being a Subdivision of Lot 1 DP 25627 & Lot 4 DP 7523

Surveyor: Brendan John Bates

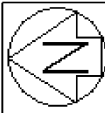
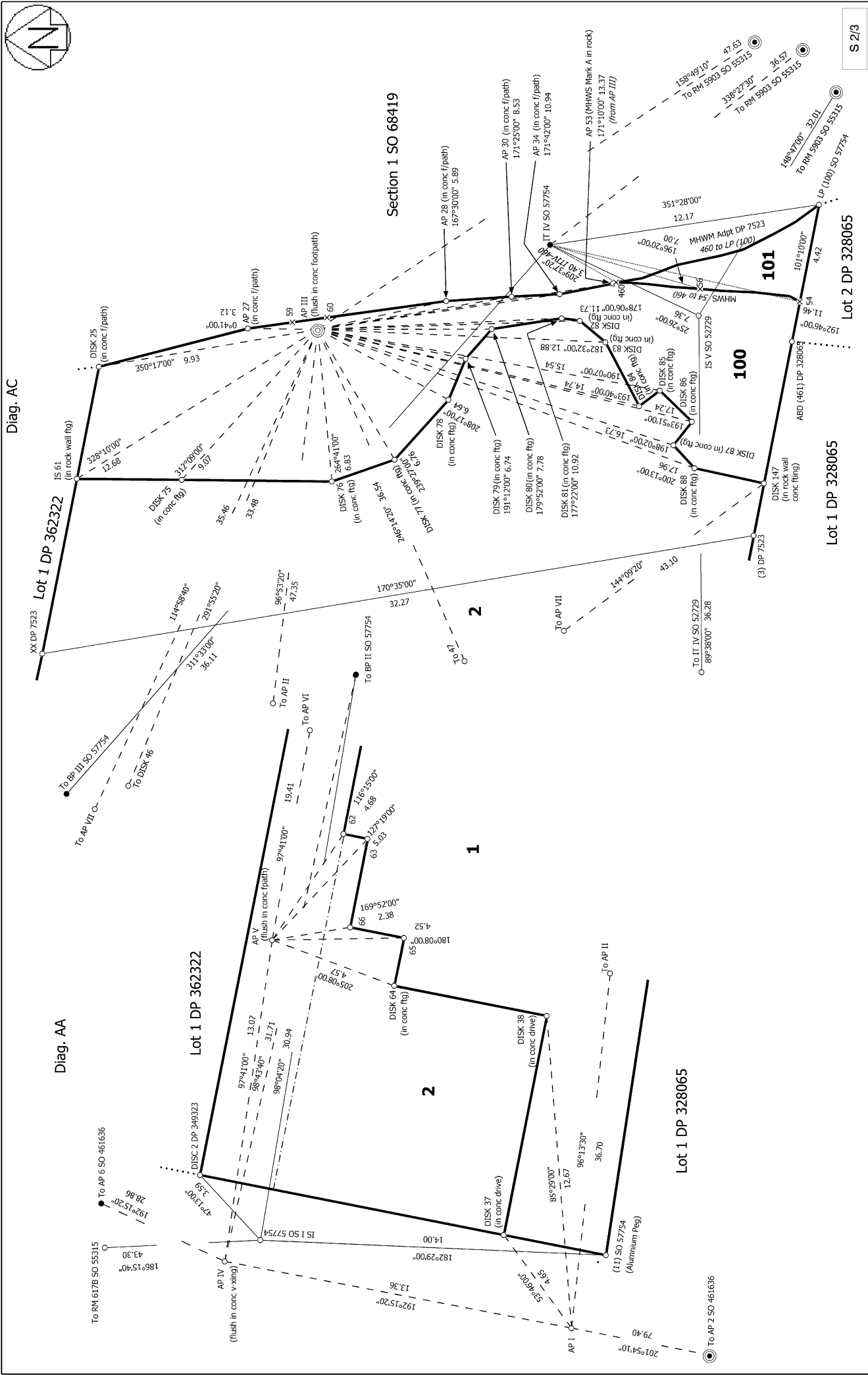
Firm: A I Bates and Associates (2004) Ltd

Date of Survey: 5/09/2022

Record of Survey

DP 582117

Deposited on: 20/06/2023

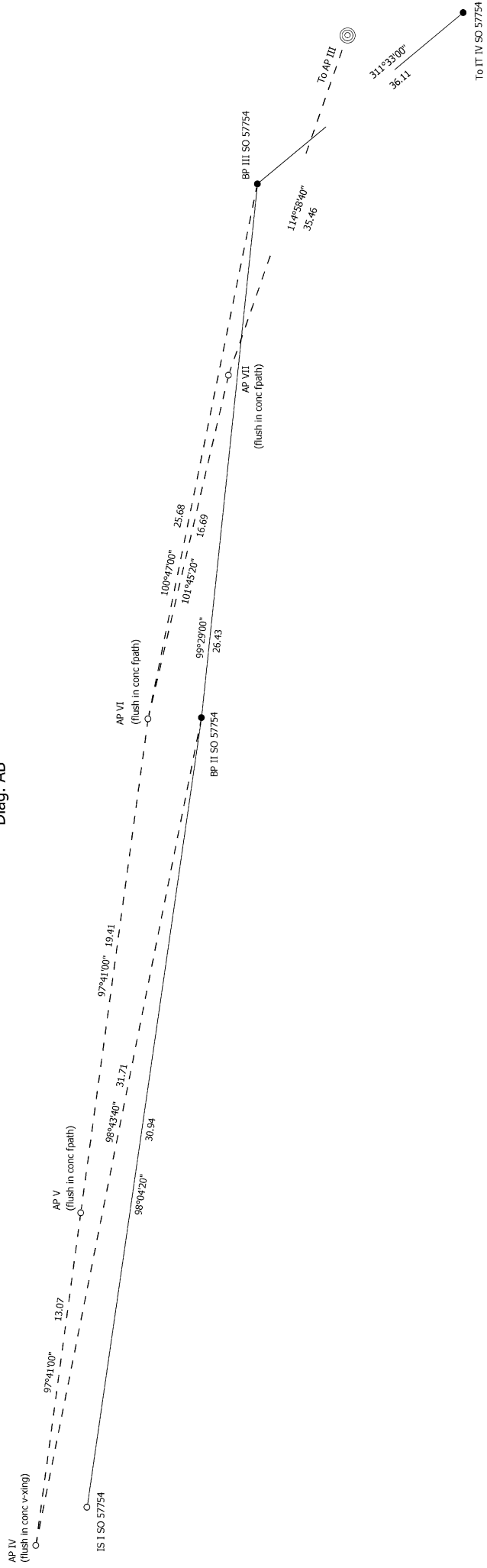


S 2/3

<p>Land District: North Auckland</p> <p>Digitally Generated Plan</p> <p>Generated on: 07/07/2023 09:37:41 Page 14 of 17</p>	<p>Lots 1, 2, 100 & 101 being a Subdivision of Lot 1 DP 25627 & Lot 4 DP 7523</p> <p>Surveyor: Brendan John Bates</p> <p>Firm: A I Bates and Associates (2004) Ltd</p> <p>Date of Survey: 5/09/2022</p>	<p>Record of Survey</p> <p>DP 582117</p> <p>Deposited on: 20/06/2023</p>
--	--	--



Diag. AB



S 3/3

Land District: North Auckland

Digitally Generated Plan

Generated on: 07/07/2023 09:37am | Page 15 of 17

Lots 1, 2, 100 & 101 being a Subdivision of Lot 1 DP 25627 & Lot 4 DP 7523

Surveyor: Brendan John Bates

Firm: A I Bates and Associates (2004) Ltd

Date of Survey: 5/09/2022

Record of Survey

DP 582117

Deposited on: 20/06/2023



Lot 1 DP 362322

Lot 2 DP 362322

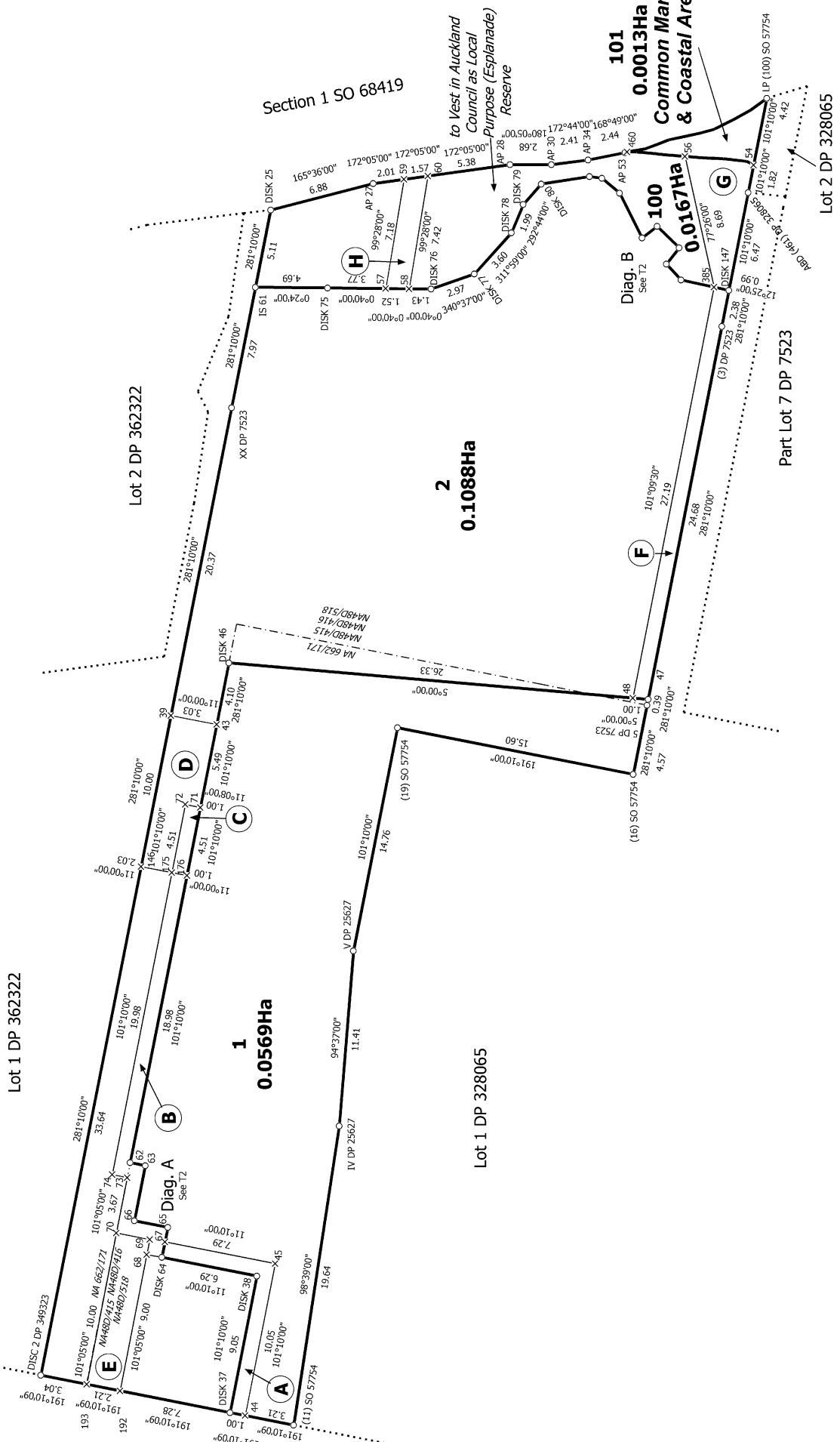
Lot 1 DP 328065

HURSTMERE ROAD

Section 1 SO 68419

Lot 1 DP 328065

Lot 2 DP 328065

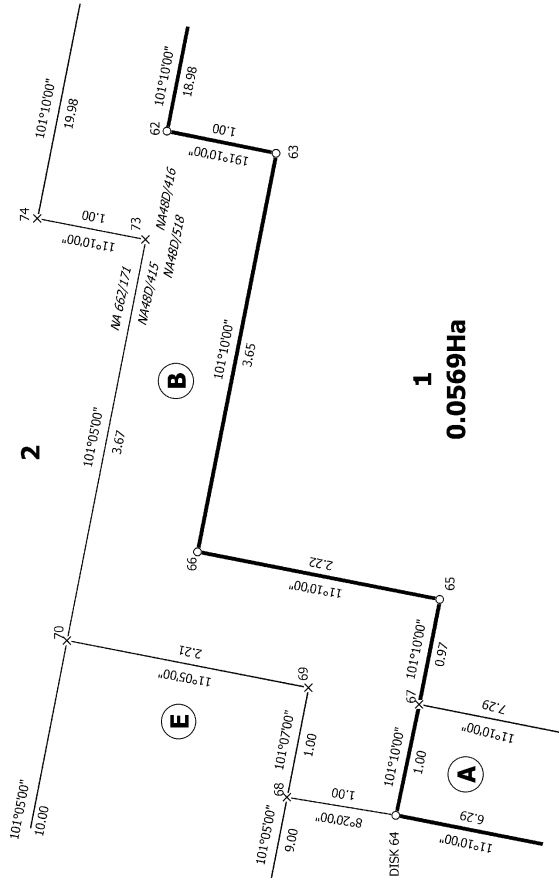


T 1/2

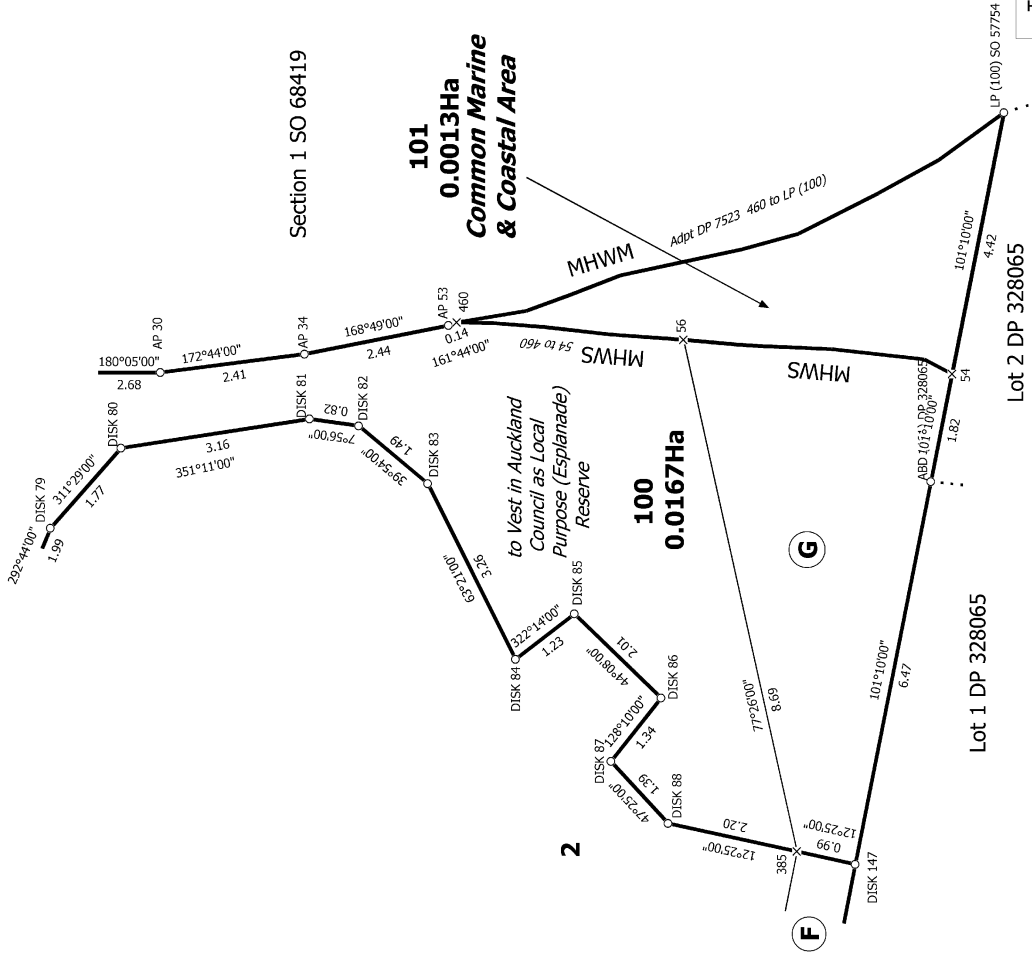
<p>Land District: North Auckland</p> <p>Digitally Generated Plan</p> <p>Generated on: 07/07/2023 09:37:am Page 16 of 17</p>	<p>Lots 1, 2, 100 & 101 being a Subdivision of Lot 1 DP 25627 & Lot 4 DP 7523</p> <p>Surveyor: Brendan John Bates</p> <p>Firm: A Bates and Associates (2004) Ltd </p> <p>Date of Survey: 5/09/2022</p>	<p>Record of Survey</p> <p>DP 582117</p> <p>Deposited on: 20/06/2023</p>
--	--	--



Diag. A



Diag. B



T 2/2

Land District: North Auckland

Lots 1, 2, 100 & 101 being a Subdivision of Lot 1 DP 25627 & Lot 4 DP 7523

Surveyor: Brendan John Bates
Firm: A I Bates and Associates (2004) Ltd

Record of Survey
DP 582117

Digitally Generated Plan
Generated on: 07/07/2023 09:37am Page 17 of 17

Date of Survey: 5/09/2022

Deposited on: 20/06/2023