

Record of Survey - DP 581715

Survey Number DP 581715
Surveyor Reference 109021 (37 Upland Road Stage 2)
Surveyor Reece Allan Moody
Survey Firm Maven Associates Limited
Surveyor Declaration I Reece Allan Moody, being a licensed cadastral surveyor, certify that--
 (a) this dataset provided by me and its related survey are accurate, correct and in accordance with the Cadastral Survey Act 2002 and Cadastral Survey Rules 2021; and
 (b) the survey was undertaken by me or under my personal direction.
 Declared on 11 Aug 2023 05:13 PM

Survey Details

Dataset Description	Lots 1-15, 101-115, 1000 & 2000 being Subdivision of Lot 300 DP 568437		
Purpose	LT Subdivision		
Status	Deposited	Type	Survey
Land District	North Auckland	Survey Class	Class A
Meridional Circuit	Mount Eden 2000	Vertical Datum	Auckland 1946

Survey Dates

Surveyed Date	12/06/2023	Certified Date	11/08/2023
Submitted Date	11/08/2023 17:13:07	Survey Approval Date	18/08/2023
Deposit Date	31/08/2023		

Referenced Surveys

Survey Number	Land District	Bearing Correction
DP 121673	North Auckland	0°00'00"
DP 76264	North Auckland	0°00'00"
DP 12336	North Auckland	0°00'00"
DP 31045	North Auckland	0°00'00"
DP 49858	North Auckland	0°00'00"
DP 50063	North Auckland	0°00'00"
DP 17147	North Auckland	0°00'00"
DP 50589	North Auckland	0°00'00"
SO 48319	North Auckland	0°00'00"
SO 48331	North Auckland	0°00'00"
SO 566841	North Auckland	0°00'00"
DP 568437	North Auckland	0°00'00"
SO 571106	North Auckland	0°00'00"
SO 54122	North Auckland	0°00'00"
SO 24291	North Auckland	0°00'00"
DP 326201	North Auckland	0°00'00"
SO 69022	North Auckland	0°00'00"
DP 15331	North Auckland	0°00'00"
SO 68955	North Auckland	0°00'00"
DP 49736	North Auckland	0°00'00"

Record of Survey - DP 581715

Referenced Surveys

Survey Number	Land District	Bearing Correction
DP 570508	North Auckland	0°00'00"
DP 480341	North Auckland	0°00'00"
DP 30275	North Auckland	0°00'00"

Territorial Authorities

Auckland Council

Comprised In

RT 1021938

Created Parcels

Parcels	Parcel Intent	Area	RT Reference
Lot 1 Deposited Plan 581715	Fee Simple Title	0.0080 Ha	1085840
Lot 2 Deposited Plan 581715	Fee Simple Title	0.0064 Ha	1085841
Lot 3 Deposited Plan 581715	Fee Simple Title	0.0064 Ha	1085842
Lot 4 Deposited Plan 581715	Fee Simple Title	0.0095 Ha	1085843
Lot 5 Deposited Plan 581715	Fee Simple Title	0.0147 Ha	1085844
Lot 6 Deposited Plan 581715	Fee Simple Title	0.0097 Ha	1085845
Lot 7 Deposited Plan 581715	Fee Simple Title	0.0092 Ha	1085846
Lot 8 Deposited Plan 581715	Fee Simple Title	0.0079 Ha	1085847
Lot 9 Deposited Plan 581715	Fee Simple Title	0.0078 Ha	1085848
Lot 10 Deposited Plan 581715	Fee Simple Title	0.0119 Ha	1085849
Height-Limited Lot 11 Deposited Plan 581715	Fee Simple Title	0.0112 Ha	1085850
Height-Limited Lot 12 Deposited Plan 581715	Fee Simple Title	0.0111 Ha	1085851
Height-Limited Lot 13 Deposited Plan 581715	Fee Simple Title	0.0112 Ha	1085852
Height-Limited Lot 14 Deposited Plan 581715	Fee Simple Title	0.0111 Ha	1085853
Height-Limited Lot 15 Deposited Plan 581715	Fee Simple Title	0.0120 Ha	1085854
Lot 101 Deposited Plan 581715	Fee Simple Title	0.0012 Ha	1085840
Lot 102 Deposited Plan 581715	Fee Simple Title	0.0012 Ha	1085841
Lot 103 Deposited Plan 581715	Fee Simple Title	0.0012 Ha	1085842
Lot 104 Deposited Plan 581715	Fee Simple Title	0.0012 Ha	1085843
Lot 105 Deposited Plan 581715	Fee Simple Title	0.0012 Ha	1085844
Lot 106 Deposited Plan 581715	Fee Simple Title	0.0012 Ha	1085845
Lot 107 Deposited Plan 581715	Fee Simple Title	0.0012 Ha	1085846
Lot 108 Deposited Plan 581715	Fee Simple Title	0.0012 Ha	1085847
Lot 109 Deposited Plan 581715	Fee Simple Title	0.0014 Ha	1085848
Lot 110 Deposited Plan 581715	Fee Simple Title	0.0014 Ha	1085849
Lot 111 Deposited Plan 581715	Fee Simple Title	0.0014 Ha	1085850
Lot 112 Deposited Plan 581715	Fee Simple Title	0.0014 Ha	1085851
Lot 113 Deposited Plan 581715	Fee Simple Title	0.0014 Ha	1085852
Lot 114 Deposited Plan 581715	Fee Simple Title	0.0014 Ha	1085853
Lot 115 Deposited Plan 581715	Fee Simple Title	0.0014 Ha	1085854
Lot 1000 Deposited Plan 581715	Fee Simple Title	0.0706 Ha	Multiple
Height-Limited Lot 2000 Deposited Plan 581715	Fee Simple Title	0.0164 Ha	Multiple

Record of Survey - DP 581715

Created Parcels

Parcels	Parcel Intent	Area	RT Reference
Area A Deposited Plan 581715	Easement		
Area B Deposited Plan 581715	Easement		
Area C Deposited Plan 581715	Easement		
Area D Deposited Plan 581715	Easement		
Area E Deposited Plan 581715	Easement		
Area F Deposited Plan 581715	Easement		
Area G Deposited Plan 581715	Easement		
Area H Deposited Plan 581715	Easement		
Area I Deposited Plan 581715	Easement		
Area J Deposited Plan 581715	Easement		
Area K Deposited Plan 581715	Easement		
Area L Deposited Plan 581715	Easement		
Area M Deposited Plan 581715	Easement		
Area N Deposited Plan 581715	Easement		
Area O Deposited Plan 581715	Easement		
Area P Deposited Plan 581715	Easement		
Height-Limited Area Q Deposited Plan 581715	Easement		
Height-Limited Area R Deposited Plan 581715	Easement		
Height-Limited Area S Deposited Plan 581715	Easement		
Height-Limited Area T Deposited Plan 581715	Easement		
Height-Limited Area U Deposited Plan 581715	Easement		
Height-Limited Area V Deposited Plan 581715	Easement		
Height-Limited Area W Deposited Plan 581715	Easement		
Height-Limited Area X Deposited Plan 581715	Easement		
Area Y Deposited Plan 581715	Easement		
Height-Limited Area Z Deposited Plan 581715	Easement		
Area AA Deposited Plan 581715	Easement		
Area AB Deposited Plan 581715	Easement		
Area AC Deposited Plan 581715	Easement		
Total Area		0.2545 Ha	

Mark and Vector

Survey Number DP 581715

Meridional Circuit Mount Eden 2000

From	To	Code	Bearing	Adpt Surv	Bearing Correction	Distance	Adpt Surv	Class
1032 SO 48331	1033 SO 48319	ob0	346°00'01"	M		172.12 M		
1033 SO 48319	AP A DP 568437	ob3	161°54'00"	A DP 568437	0°00'00"	96.33 A DP 568437		
AP A DP 568437	1032 SO 48331	ob8	171°10'10"	A DP 568437	0°00'00"	76.34 A DP 568437		
1033 SO 48319	LP I DP 76264	ob4	158°21'00"	A DP 76264	0°00'00"	17.23 A DP 76264		
LP I DP 76264	IS III DP 76264	ob12	82°00'20"	A DP 76264	0°00'00"	48.03 A DP 76264		
IS III DP 76264	IS IV DP 76264	ob13	61°22'10"	A DP 76264	0°00'00"	29.67 A DP 76264		
IS IV DP 76264	IS VII DP 76264	ob14	344°45'00"	A DP 76264	0°00'00"	34.36 A DP 76264		
IS VII DP 76264	IT I DP 50063	ob16	100°45'00"	A SO 24291	0°00'00"	38.23 A DP 76264		
IT I DP 50063	IT IV DP 50063	ob17	166°37'00"	A DP 50063	0°00'00"	58.05 A DP 50063		
IT IV DP 50063	IT III DP 50063	ob19	162°35'00"	A DP 50063	0°00'00"	33.46 A DP 50063		
IT III DP 50063	IT II DP 50063	ob22	88°06'00"	A DP 50063	0°00'00"	43.52 A DP 50063		
IT II DP 50063	IS V DP 31045	ob24	170°18'40"	A DP 31045	0°00'00"	57.81 A DP 50063		
IS V DP 31045	IS VI DP 31045	ob25	170°18'40"	A DP 31045	0°00'00"	35.70 A DP 31045		
IS VI DP 31045	IS XXII DP 49858	ob26	163°31'00"	A DP 49858	0°00'00"	36.15 A DP 49858		
IS XXII DP 49858	IB IX DP 49858	ob27	184°24'00"	A DP 49858	0°00'00"	23.79 A DP 49858		
IB IX DP 49858	IS IV DP 49858	ob28	249°50'00"	A DP 49858	0°00'00"	63.62 A DP 49858		
IS IV DP 49858	IS II DP 49858	ob29	248°52'00"	A DP 49858	0°00'00"	43.45 A DP 49858		
IS II DP 49858	1031 SO 48331	ob30	307°21'58"	A SO 48331	0°00'00"	32.82 A DP 49858		
1031 SO 48331	1032 SO 48331	ob31	331°09'30"	A SO 48331	0°00'00"	65.42 A SO 48331		
AP A DP 568437	DISK D/11 DP 581715	ob9	74°11'40"	A DP 568437	0°00'00"	70.29 A DP 568437		
DISK D/11 DP 581715	PEG D/10 DP 581715	ob32	346°00'00"	A SO 566841	0°00'00"	2.34 C		Class A
PEG D/10 DP 581715	PEG D/9 DP 581715	ob65	346°00'00"	A SO 566841	0°00'00"	2.50 C		Class A
PEG D/9 DP 581715	PEG D/8 DP 581715	ob67	346°00'00"	A SO 566841	0°00'00"	2.50 C		Class A
PEG D/8 DP 581715	PEG G/5 DP 581715	ob68	346°00'00"	A SO 566841	0°00'00"	2.50 C		Class A
PEG G/5 DP 581715	PEG G/4 DP 581715	ob69	346°00'00"	A SO 566841	0°00'00"	2.50 C		Class A
PEG G/4 DP 581715	PEG G/3 DP 581715	ob70	346°00'00"	A SO 566841	0°00'00"	2.50 C		Class A
PEG G/3 DP 581715	PEG G/2 DP 581715	ob71	346°00'00"	A SO 566841	0°00'00"	2.50 C		Class A
PEG G/2 DP 581715	PEG G/1 DP 581715	ob72	346°00'00"	A SO 566841	0°00'00"	2.50 C		Class A
PEG G/1 DP 581715	IP 3 SO 566841	ob73	346°00'00"	A SO 566841	0°00'00"	4.54 C		Class A
IP 3 SO 566841	PEG I/1 DP 581715	ob258	346°00'00"	A SO 566841	0°00'00"	18.41 C		Class A
PEG I/1 DP 581715	PEG DP 76264	ob74	346°00'00"	A SO 566841	0°00'00"	9.02 C		Class A

Mark and Vector

Survey Number DP 581715

Meridional Circuit Mount Eden 2000

From	To	Code	Bearing	Adpt Surv	Bearing Correction	Distance	Adpt Surv	Class
PEG DP 76264	PEG (2) DP 121673	ob231	346°00'01"	A DP 12336	0°00'00"	13.24 C		Class A
PEG (2) DP 121673	IS IV DP 76264	ob33	352°32'00"	A DP 121673	0°00'00"	14.31 A	DP 121673	
1032 SO 48331	MA 2 SO 566841	ob1	339°26'50"	A SO 566841	0°00'00"	77.47 A	SO 566841	
MA 2 SO 566841	MA 8 SO 566841	ob260	15°57'50"	A SO 566841	0°00'00"	28.84 A	SO 566841	
MA 8 SO 566841	1033 SO 48319	ob262	341°28'00"	A SO 566841	0°00'00"	70.39 A	SO 566841	
MA 2 SO 566841	AP A SO 571106	ob261	84°27'00"	A SO 566841	0°00'00"	11.29 A	SO 566841	
AP A SO 571106	MA 4 SO 566841	ob263	73°43'10"	A SO 566841	0°00'00"	77.20 A	SO 566841	
MA 4 SO 566841	IT 6 SO 566841	ob268	343°38'30"	A SO 566841	0°00'00"	22.84 A	SO 566841	
IT 6 SO 566841	IP 3 SO 566841	ob270	301°51'00"	A SO 566841	0°00'00"	1.98 A	SO 566841	
MA 4 SO 566841	DISK D/11 DP 581715	ob269	252°44'00"	A SO 566841	0°00'00"	2.33 A	SO 566841	
AP A DP 568437	DISC LX DP 568437	ob10	80°37'20"	A DP 568437	0°00'00"	59.95 A	DP 568437	
DISC LX DP 568437	UNMK KX DP 568437	ob34	256°00'00"	A DP 568437	0°00'00"	37.02 A	DP 568437	Class A
UNMK KX DP 568437	DISC JX DP 568437	ob35	256°00'00"	A DP 568437	0°00'00"	22.58 A	DP 568437	Class A
DISC JX DP 568437	ABD 70 SO 571106	ob36	346°00'00"	A DP 50589	0°00'00"	4.00 A	DP 568437	Class A
ABD 70 SO 571106	ABD NX DP 568437	ob37	346°00'00"	A DP 50589	0°00'00"	3.05 A	DP 568437	Class A
ABD NX DP 568437	DISK D/11 DP 581715	ob39	76°00'00"	A DP 568437	0°00'00"	70.10 A	DP 568437	Class A
IS IV DP 76264	IT V DP 76264	ob15	187°21'00"	A DP 76264	0°00'00"	23.07 A	DP 76264	
IT V DP 76264	PEG DP 76264	ob230	117°22'00"	A DP 76264	0°00'00"	9.03 A	DP 76264	
AP A DP 568437	ABD NX DP 568437	ob11	350°07'00"	A DP 568437	0°00'00"	2.23 A	DP 568437	
AP A SO 571106	ABD 70 SO 571106	ob264	77°18'00"	A SO 571106	0°00'00"	4.71 A	SO 571106	
IT IV DP 50063	BS L/1 DP 581715	ob20	335°32'00"	A DP 50063	0°00'00"	10.41 A	DP 50063	
BS L/1 DP 581715	UNMK (6) DP 50063	ob40	280°45'00"	A DP 17147	0°00'00"	0.65 A	DP 50063	Class A
UNMK (6) DP 50063	PEG N/2 DP 581715	ob41	280°45'00"	A DP 17147	0°00'00"	6.80 C		Class A
PEG N/2 DP 581715	PEG N/1 DP 581715	ob55	280°45'00"	A DP 17147	0°00'00"	4.43 C		Class A
PEG N/1 DP 581715	PEG M/3 DP 581715	ob54	280°45'00"	A DP 17147	0°00'00"	4.43 C		Class A
PEG M/3 DP 581715	UNMK M/2U DP 581715	ob53	280°45'00"	A DP 17147	0°00'00"	6.10 C		Class A
UNMK M/2U DP 581715	UNMK M/1U DP 581715	ob52	280°45'00"	A DP 17147	0°00'00"	6.10 C		Class A
UNMK M/1U DP 581715	PEG (2) DP 121673	ob51	280°45'00"	A DP 17147	0°00'00"	7.90 C		Class A

Mark and Vector

Survey Number DP 581715

Meridional Circuit Mount Eden 2000

From	To	Code	Bearing	Adpt Surv	Bearing Correction	Distance	Adpt Surv	Class
1033 SO 48319	1034 SO 54122	ob5	328°49'57"	A SO 48319	0°00'00"	67.995 A	SO 48319	
1034 SO 54122	IS VII DP 76264	ob229	100°45'00"	A SO 24291	0°00'00"	108.00 A	DP 76264	
IT III DP 50063	PEG (2) DP 17147	ob23	191°04'00"	A DP 50063	0°00'00"	12.16 A	DP 50063	
PEG (2) DP 17147	UNMK K/1U DP 581715	ob42	347°20'00"	A DP 17147	0°00'00"	8.19 C		Class A
UNMK K/1U DP 581715	UNMK P/1U DP 581715	ob60	347°20'00"	A DP 17147	0°00'00"	7.43 C		Class A
UNMK P/1U DP 581715	UNMK P/2U DP 581715	ob59	347°20'00"	A DP 17147	0°00'00"	7.43 C		Class A
UNMK P/2U DP 581715	UNMK H/2U DP 581715	ob58	347°20'00"	A DP 17147	0°00'00"	7.43 C		Class A
UNMK H/2U DP 581715	PEG H/1 DP 581715	ob57	347°20'00"	A DP 17147	0°00'00"	7.59 C		Class A
PEG H/1 DP 581715	PEG L/2 DP 581715	ob56	347°20'00"	A DP 17147	0°00'00"	13.40 C		Class A
PEG L/2 DP 581715	BS L/1 DP 581715	ob44	347°20'00"	A DP 17147	0°00'00"	3.20 A	DP 50063	Class A
PEG (2) DP 17147	IB J/1 DP 581715	ob43	256°00'00"	A DP 17147	0°00'00"	13.34 C		Class A
IB J/1 DP 581715	DISK J/3 DP 581715	ob61	256°00'00"	A DP 17147	0°00'00"	1.33 C		Class A
DISK J/3 DP 581715	PEG (1) DP 17147	ob63	256°00'00"	A DP 17147	0°00'00"	17.12 C		Class A
PEG (1) DP 17147	DISC LX DP 568437	ob46	244°07'00"	A DP 568437	0°00'00"	10.73 A	DP 568437	Class A
PEG (1) DP 17147	PEG DP 12336	ob47	346°00'00"	A DP 50589	0°00'00"	1.79 A	DP 568437	Class A
PEG DP 12336	DISK D/11 DP 581715	ob48	346°00'01"	A DP 12336	0°00'00"	3.05 A	SO 69022	Class A
ABD 70 SO 571106	PEG (ROW) SO 571106	ob38	76°00'00"	A DP 50589	0°00'00"	20.12 A	DP 50589	Class A
PEG (ROW) SO 571106	UNMK KX DP 568437	ob49	134°21'00"	A DP 50589	0°00'00"	4.70 A	DP 568437	Class A
PEG L/2 DP 581715	PEG (5) DP 50063	ob45	323°24'00"	A DP 50063	0°00'00"	1.78 A	DP 50063	Class A
PEG (5) DP 50063	UNMK (6) DP 50063	ob50	351°08'30"	A DP 50063	0°00'00"	1.84 A	DP 50063	Class A
IT IV DP 50063	PEG L/2 DP 581715	ob21	330°24'00"	A DP 50063	0°00'00"	7.30 A	DP 50063	
PEG D/10 DP 581715	DISK D/5 DP 581715	ob66	76°00'00"	C		5.60 C		Class A
DISK D/5 DP 581715	UNMK D/6 DP 581715	ob76	346°00'00"	C		2.50 C		Class A
UNMK D/6 DP 581715	PEG D/9 DP 581715	ob77	256°00'00"	C		5.60 C		Class A
UNMK D/6 DP 581715	DISK D/7 DP 581715	ob78	346°00'00"	C		2.50 C		Class A

Mark and Vector

Survey Number DP 581715

Meridional Circuit Mount Eden 2000

From	To	Code	Bearing	Adpt Surv	Bearing Correction	Distance	Adpt Surv	Class
DISK D/7 DP 581715	PEG D/8 DP 581715	ob79	256°00'00"	C		5.60 C		Class A
DISK D/7 DP 581715	DISK G/6 DP 581715	ob80	346°00'00"	C		2.50 C		Class A
DISK G/6 DP 581715	PEG G/5 DP 581715	ob81	256°00'00"	C		5.60 C		Class A
DISK G/6 DP 581715	DISK G/7 DP 581715	ob82	346°00'00"	C		2.50 C		Class A
DISK G/7 DP 581715	PEG G/4 DP 581715	ob83	256°00'00"	C		5.60 C		Class A
DISK G/7 DP 581715	UNMK G/8 DP 581715	ob84	346°00'00"	C		2.50 C		Class A
UNMK G/8 DP 581715	PEG G/3 DP 581715	ob85	256°00'00"	C		5.60 C		Class A
UNMK G/8 DP 581715	DISK G/9 DP 581715	ob86	346°00'00"	C		2.50 C		Class A
DISK G/9 DP 581715	PEG G/2 DP 581715	ob87	256°00'00"	C		5.60 C		Class A
DISK G/9 DP 581715	DISK G/10 DP 581715	ob88	346°00'00"	C		2.50 C		Class A
DISK G/10 DP 581715	PEG G/1 DP 581715	ob89	256°00'00"	C		5.60 C		Class A
DISK J/3 DP 581715	AP J DP 581715	ob64	346°00'00"	M		1.96 M		Class A
DISK J/4 DP 581715	DISK J/5 DP 581715	ob91	346°00'00"	M		2.50 M		Class A
DISK J/5 DP 581715	DISK D/1 DP 581715	ob93	346°00'00"	C		2.50 C		Class A
DISK D/1 DP 581715	DISK E/12 DP 581715	ob95	346°00'00"	C		2.50 C		Class A
DISK E/12 DP 581715	DISK E/11 DP 581715	ob97	346°00'00"	C		2.50 C		Class A
DISK E/11 DP 581715	DISK E/10 DP 581715	ob99	346°00'00"	C		2.50 C		Class A
DISK E/10 DP 581715	DISK E/9 DP 581715	ob101	346°00'00"	C		2.50 C		Class A
DISK E/9 DP 581715	DISK E/8 DP 581715	ob103	346°00'00"	C		2.50 C		Class A
DISK E/8 DP 581715	IB E/7 DP 581715	ob105	346°00'00"	C		2.50 C		Class A
IB E/7 DP 581715	DISK E/6 DP 581715	ob107	256°00'00"	C		5.00 C		Class A
DISK E/6 DP 581715	DISK G/10 DP 581715	ob108	256°00'00"	C		6.52 C		Class A
DISK E/8 DP 581715	DISK E/5 DP 581715	ob106	256°00'00"	C		5.00 C		Class A
DISK E/5 DP 581715	DISK E/6 DP 581715	ob109	346°00'00"	C		2.50 C		Class A

Mark and Vector

Survey Number DP 581715

Meridional Circuit Mount Eden 2000

From	To	Code	Bearing	Adpt Surv	Bearing Correction	Distance	Adpt Surv	Class
DISK E/9 DP 581715	DISK E/4 DP 581715	ob104	256°00'00"	C		5.00 C		Class A
DISK E/4 DP 581715	DISK E/5 DP 581715	ob110	346°00'00"	C		2.50 C		Class A
DISK E/10 DP 581715	DISK E/3 DP 581715	ob102	256°00'00"	C		5.00 C		Class A
DISK E/3 DP 581715	DISK E/4 DP 581715	ob111	346°00'00"	C		2.50 C		Class A
DISK E/11 DP 581715	DISK E/2 DP 581715	ob100	256°00'00"	C		5.00 C		Class A
DISK E/2 DP 581715	DISK E/3 DP 581715	ob112	346°00'00"	C		2.50 C		Class A
DISK E/12 DP 581715	DISK E/1 DP 581715	ob98	256°00'00"	C		5.00 C		Class A
DISK E/1 DP 581715	DISK E/2 DP 581715	ob113	346°00'00"	C		2.50 C		Class A
DISK D/1 DP 581715	DISK D/2 DP 581715	ob96	256°00'00"	C		5.00 C		Class A
DISK D/2 DP 581715	DISK E/1 DP 581715	ob114	346°00'00"	C		2.50 C		Class A
DISK J/5 DP 581715	DISK D/3 DP 581715	ob94	256°00'00"	C		5.00 C		Class A
DISK D/3 DP 581715	DISK D/2 DP 581715	ob115	346°00'00"	C		2.50 C		Class A
DISK J/4 DP 581715	DISK D/4 DP 581715	ob92	256°00'00"	C		5.00 C		Class A
DISK D/4 DP 581715	DISK D/3 DP 581715	ob116	346°00'00"	C		2.50 C		Class A
IB J/1 DP 581715	UNMK U36 DP 581715	ob62	346°00'00"	C		7.94 C		Class A
UNMK U36 DP 581715	IB J/2 DP 581715	ob215	346°00'00"	C		0.25 C		Class A
IB J/2 DP 581715	UNMK U35 DP 581715	ob122	346°00'00"	C		0.25 C		Class A
UNMK U35 DP 581715	UNMK U32 DP 581715	ob213	346°00'00"	C		6.93 C		Class A
UNMK U32 DP 581715	IB E/13 DP 581715	ob211	346°00'00"	C		0.25 C		Class A
IB E/13 DP 581715	UNMK U27 DP 581715	ob124	346°00'00"	C		0.25 C		Class A
UNMK U27 DP 581715	UNMK U28 DP 581715	ob209	346°00'00"	C		6.93 C		Class A
UNMK U28 DP 581715	IB E/14 DP 581715	ob203	346°00'00"	C		0.25 C		Class A
IB E/14 DP 581715	UNMK U17 DP 581715	ob126	346°00'00"	C		0.25 C		Class A
UNMK U17 DP 581715	IB E/15 DP 581715	ob201	346°00'00"	C		1.88 C		Class A

Mark and Vector

Survey Number DP 581715

Meridional Circuit Mount Eden 2000

From	To	Code	Bearing	Adpt Surv	Bearing Correction	Distance	Adpt Surv	Class
IB E/15 DP 581715	IB E/16 DP 581715	ob90	76°00'00"	C		0.60 C		Class A
IB E/16 DP 581715	UNMK U30 DP 581715	ob117	346°00'00"	C		5.05 C		Class A
UNMK U30 DP 581715	DISK F/14 DP 581715	ob207	346°00'00"	C		0.25 C		Class A
DISK F/14 DP 581715	UNMK U33 DP 581715	ob118	346°00'00"	C		0.25 C		Class A
UNMK U33 DP 581715	DISK F/12 DP 581715	ob205	346°00'00"	C		7.34 C		Class A
DISK F/12 DP 581715	DISK H/4 DP 581715	ob120	76°00'00"	C		7.25 C		Class A
DISK H/4 DP 581715	PEG H/1 DP 581715	ob121	76°00'00"	C		6.37 C		Class A
IB J/2 DP 581715	UNMK U37 DP 581715	ob123	76°00'00"	C		9.50 C		Class A
UNMK U37 DP 581715	PEG K/1 DP 581715	ob217	76°00'00"	C		3.23 C		Class A
IB E/13 DP 581715	UNMK U38 DP 581715	ob125	76°00'00"	C		9.50 C		Class A
UNMK U38 DP 581715	DISK P/1 DP 581715	ob218	76°00'00"	C		3.40 C		Class A
IB E/14 DP 581715	UNMK U39 DP 581715	ob127	76°00'00"	C		9.85 C		Class A
UNMK U39 DP 581715	DISK P/2 DP 581715	ob219	76°00'00"	C		3.08 C		Class A
DISK F/14 DP 581715	UNMK U40 DP 581715	ob119	76°00'00"	C		9.25 C		Class A
UNMK U40 DP 581715	DISK H/2 DP 581715	ob220	76°00'00"	C		3.20 C		Class A
PEG I/1 DP 581715	DISK I/3 DP 581715	ob75	76°00'00"	C		7.18 C		Class A
DISK I/3 DP 581715	UNMK U7 DP 581715	ob145	76°00'00"	C		5.29 C		Class A
UNMK U7 DP 581715	IB I/4 DP 581715	ob173	76°00'00"	C		0.10 C		Class A
IB I/4 DP 581715	UNMK U18 DP 581715	ob135	166°00'00"	C		0.20 C		Class A
UNMK U18 DP 581715	DISK I/6 DP 581715	ob189	166°00'00"	C		1.40 C		Class A
DISK I/6 DP 581715	UNMK U8 DP 581715	ob137	76°00'00"	C		5.44 C		Class A
UNMK U8 DP 581715	IB F/5 DP 581715	ob175	76°00'00"	C		0.10 C		Class A
IB F/5 DP 581715	UNMK U14 DP 581715	ob139	166°00'00"	C		0.20 C		Class A
UNMK U14 DP 581715	DISK F/4 DP 581715	ob177	166°00'00"	C		2.96 C		Class A

Mark and Vector

Survey Number DP 581715

Meridional Circuit Mount Eden 2000

From	To	Code	Bearing	Adpt Surv	Bearing Correction	Distance	Adpt Surv	Class
DISK F/4 DP 581715	DISK F/3 DP 581715	ob129	76°00'00"	C		2.09 C		Class A
DISK F/3 DP 581715	DISK F/2 DP 581715	ob141	166°00'00"	C		3.61 C		Class A
DISK F/2 DP 581715	DISK F/1 DP 581715	ob138	76°00'00"	C		2.08 C		Class A
DISK F/1 DP 581715	UNMK U67 DP 581715	ob142	76°00'00"	C		3.77 C		Class A
UNMK U67 DP 581715	DISK H/5 DP 581715	ob256	76°00'00"	C		0.25 C		Class A
DISK H/5 DP 581715	DISK H/4 DP 581715	ob132	166°00'00"	C		1.20 C		Class A
IB F/5 DP 581715	IB F/6 DP 581715	ob140	76°00'00"	C		0.15 C		Class A
IB F/6 DP 581715	UNMK U3 DP 581715	ob144	346°00'00"	C		11.34 C		Class A
UNMK U3 DP 581715	PEG M/3 DP 581715	ob167	346°00'00"	C		4.10 C		Class A
IB I/4 DP 581715	IB I/5 DP 581715	ob136	76°00'00"	C		0.15 C		Class A
IB I/5 DP 581715	UNMK U2 DP 581715	ob148	346°00'00"	C		12.30 C		Class A
UNMK U2 DP 581715	DISK M/2 DP 581715	ob166	346°00'00"	C		3.00 C		Class A
DISK I/3 DP 581715	UNMK U6 DP 581715	ob146	346°00'00"	C		0.35 C		Class A
UNMK U6 DP 581715	UNMK U1 DP 581715	ob170	346°00'00"	C		14.50 C		Class A
UNMK U1 DP 581715	DISK M/1 DP 581715	ob165	346°00'00"	C		3.00 C		Class A
DISK F/1 DP 581715	UNMK U12 DP 581715	ob143	346°00'00"	C		2.05 C		Class A
UNMK U12 DP 581715	UNMK U4 DP 581715	ob179	346°00'00"	C		13.90 C		Class A
UNMK U4 DP 581715	PEG N/1 DP 581715	ob168	346°00'00"	C		4.40 C		Class A
DISK H/5 DP 581715	UNMK U5 DP 581715	ob133	346°00'00"	C		13.90 C		Class A
UNMK U5 DP 581715	PEG N/2 DP 581715	ob169	346°00'00"	C		4.60 C		Class A
IP 3 SO 566841	IB G/11 DP 581715	ob259	133°11'00"	C		3.15 C		
IB G/11 DP 581715	IB G/12 DP 581715	ob128	346°00'00"	C		5.02 C		Class A
IB G/12 DP 581715	IB G/13 DP 581715	ob151	346°00'00"	C		4.02 C		Class A
IB G/13 DP 581715	DISK I/9 DP 581715	ob150	346°00'00"	C		4.02 C		Class A

Mark and Vector

Survey Number DP 581715

Meridional Circuit Mount Eden 2000

From	To	Code	Bearing	Adpt Surv	Bearing Correction	Distance	Adpt Surv	Class
DISK I/9 DP 581715	DISK I/2 DP 581715	ob149	346°00'00"	C		6.80 C		Class A
DISK I/2 DP 581715	PEG DP 76264	ob130	336°30'00"	C		10.36 C		
DISK I/2 DP 581715	DISK I/8 DP 581715	ob131	76°00'00"	C		9.50 C		Class A
DISK I/8 DP 581715	DISK I/7 DP 581715	ob160	166°00'00"	C		1.60 C		Class A
DISK I/7 DP 581715	DISK F/7 DP 581715	ob163	76°00'00"	C		5.38 C		Class A
DISK F/7 DP 581715	DISK F/8 DP 581715	ob152	166°00'00"	C		3.04 C		Class A
DISK F/8 DP 581715	DISK F/9 DP 581715	ob164	76°00'00"	C		1.20 C		Class A
DISK F/9 DP 581715	DISK F/10 DP 581715	ob162	166°00'00"	C		2.16 C		Class A
DISK F/10 DP 581715	DISK F/11 DP 581715	ob153	166°00'00"	C		4.02 C		Class A
DISK F/11 DP 581715	DISK F/13 DP 581715	ob155	166°00'00"	C		4.02 C		Class A
DISK F/13 DP 581715	DISK E/17 DP 581715	ob157	166°00'00"	C		5.02 C		Class A
DISK E/17 DP 581715	IB G/11 DP 581715	ob159	256°00'00"	C		16.08 C		Class A
DISK F/13 DP 581715	UNMK U54 DP 581715	ob158	256°00'00"	C		3.50 C		Class A
UNMK U54 DP 581715	UNMK U49 DP 581715	ob243	256°00'00"	C		12.08 C		Class A
UNMK U49 DP 581715	IB G/12 DP 581715	ob232	256°00'00"	C		0.50 C		Class A
DISK F/11 DP 581715	UNMK U53 DP 581715	ob156	256°00'00"	C		3.50 C		Class A
UNMK U53 DP 581715	UNMK U50 DP 581715	ob242	256°00'00"	C		12.08 C		Class A
UNMK U50 DP 581715	IB G/13 DP 581715	ob235	256°00'00"	C		0.50 C		Class A
DISK F/10 DP 581715	UNMK U52 DP 581715	ob154	256°00'00"	C		3.50 C		Class A
UNMK U52 DP 581715	UNMK U51 DP 581715	ob241	256°00'00"	C		12.08 C		Class A
UNMK U51 DP 581715	DISK I/9 DP 581715	ob238	256°00'00"	C		0.50 C		Class A
UNMK U6 DP 581715	UNMK U9 DP 581715	ob171	256°00'00"	C		0.25 C		Class A
UNMK U9 DP 581715	UNMK U34 DP 581715	ob182	346°00'00"	C		14.50 C		Class A
UNMK U34 DP 581715	UNMK U1 DP 581715	ob183	76°00'00"	C		0.25 C		Class A

Mark and Vector

Survey Number DP 581715

Meridional Circuit Mount Eden 2000

From	To	Code	Bearing	Adpt Surv	Bearing Correction	Distance	Adpt Surv	Class
UNMK U6 DP 581715	UNMK U11 DP 581715	ob172	76°00'00"	C		0.25 C		Class A
UNMK U11 DP 581715	UNMK U16 DP 581715	ob184	346°00'00"	C		14.50 C		Class A
UNMK U16 DP 581715	UNMK U1 DP 581715	ob185	256°00'00"	C		0.25 C		Class A
UNMK U7 DP 581715	UNMK U13 DP 581715	ob174	346°00'00"	C		12.30 C		Class A
UNMK U13 DP 581715	UNMK U2 DP 581715	ob186	76°00'00"	C		0.25 C		Class A
UNMK U18 DP 581715	UNMK U10 DP 581715	ob190	76°00'00"	C		0.40 C		Class A
UNMK U10 DP 581715	UNMK U15 DP 581715	ob187	346°00'00"	C		12.50 C		Class A
UNMK U15 DP 581715	UNMK U2 DP 581715	ob188	256°00'00"	C		0.25 C		Class A
UNMK U8 DP 581715	UNMK U19 DP 581715	ob176	346°00'00"	C		11.34 C		Class A
UNMK U19 DP 581715	UNMK U3 DP 581715	ob191	76°00'00"	C		0.25 C		Class A
UNMK U14 DP 581715	UNMK U20 DP 581715	ob178	76°00'00"	C		0.40 C		Class A
UNMK U20 DP 581715	UNMK U21 DP 581715	ob192	346°00'00"	C		11.54 C		Class A
UNMK U21 DP 581715	UNMK U3 DP 581715	ob193	256°00'00"	C		0.25 C		Class A
UNMK U12 DP 581715	UNMK U22 DP 581715	ob180	256°00'00"	C		0.25 C		Class A
UNMK U22 DP 581715	UNMK U23 DP 581715	ob194	346°00'00"	C		13.90 C		Class A
UNMK U23 DP 581715	UNMK U4 DP 581715	ob195	76°00'00"	C		0.25 C		Class A
UNMK U12 DP 581715	UNMK U24 DP 581715	ob181	76°00'00"	C		0.25 C		Class A
UNMK U24 DP 581715	UNMK U25 DP 581715	ob196	346°00'00"	C		13.90 C		Class A
UNMK U25 DP 581715	UNMK U4 DP 581715	ob197	256°00'00"	C		0.25 C		Class A
UNMK U67 DP 581715	UNMK U31 DP 581715	ob257	346°00'00"	C		13.90 C		Class A
UNMK U31 DP 581715	UNMK U5 DP 581715	ob198	76°00'00"	C		0.25 C		Class A
DISK H/5 DP 581715	UNMK U29 DP 581715	ob134	76°00'00"	C		0.25 C		Class A
UNMK U29 DP 581715	UNMK U26 DP 581715	ob199	346°00'00"	C		13.90 C		Class A
UNMK U26 DP 581715	UNMK U5 DP 581715	ob200	256°00'00"	C		0.25 C		Class A

Mark and Vector

Survey Number DP 581715

Meridional Circuit Mount Eden 2000

From	To	Code	Bearing	Adpt Surv	Bearing Correction	Distance	Adpt Surv	Class
UNMK U36 DP 581715	UNMK U41 DP 581715	ob216	76°00'00"	C		9.50 C		Class A
UNMK U41 DP 581715	UNMK U37 DP 581715	ob221	346°00'00"	C		0.25 C		Class A
UNMK U35 DP 581715	UNMK U42 DP 581715	ob214	76°00'00"	C		9.50 C		Class A
UNMK U42 DP 581715	UNMK U37 DP 581715	ob222	166°00'00"	C		0.25 C		Class A
UNMK U32 DP 581715	UNMK U43 DP 581715	ob212	76°00'00"	C		9.50 C		Class A
UNMK U43 DP 581715	UNMK U38 DP 581715	ob223	346°00'00"	C		0.25 C		Class A
UNMK U27 DP 581715	UNMK U44 DP 581715	ob210	76°00'00"	C		9.50 C		Class A
UNMK U44 DP 581715	UNMK U38 DP 581715	ob224	166°00'00"	C		0.25 C		Class A
UNMK U28 DP 581715	UNMK U45 DP 581715	ob204	76°00'00"	C		9.85 C		Class A
UNMK U45 DP 581715	UNMK U39 DP 581715	ob225	346°00'00"	C		0.25 C		Class A
UNMK U17 DP 581715	UNMK U46 DP 581715	ob202	76°00'00"	C		9.85 C		Class A
UNMK U46 DP 581715	UNMK U39 DP 581715	ob226	166°00'00"	C		0.25 C		Class A
UNMK U30 DP 581715	UNMK U47 DP 581715	ob208	76°00'00"	C		9.25 C		Class A
UNMK U47 DP 581715	UNMK U40 DP 581715	ob227	346°00'00"	C		0.25 C		Class A
UNMK U33 DP 581715	UNMK U48 DP 581715	ob206	76°00'00"	C		9.25 C		Class A
UNMK U48 DP 581715	UNMK U40 DP 581715	ob228	166°00'00"	C		0.25 C		Class A
UNMK U49 DP 581715	UNMK U55 DP 581715	ob233	166°00'00"	C		0.25 C		Class A
UNMK U55 DP 581715	UNMK U56 DP 581715	ob244	76°00'00"	C		12.08 C		Class A
UNMK U56 DP 581715	UNMK U54 DP 581715	ob245	346°00'00"	C		0.25 C		Class A
UNMK U50 DP 581715	UNMK U57 DP 581715	ob236	166°00'00"	C		0.25 C		Class A
UNMK U57 DP 581715	UNMK U58 DP 581715	ob246	76°00'00"	C		12.08 C		Class A
UNMK U58 DP 581715	UNMK U53 DP 581715	ob247	346°00'00"	C		0.25 C		Class A
UNMK U51 DP 581715	UNMK U59 DP 581715	ob239	166°00'00"	C		0.25 C		Class A
UNMK U59 DP 581715	UNMK U60 DP 581715	ob248	76°00'00"	C		12.08 C		Class A

Mark and Vector

Survey Number DP 581715

Meridional Circuit Mount Eden 2000

From	To	Code	Bearing	Adpt Surv	Bearing Correction	Distance	Adpt Surv	Class
UNMK U60 DP 581715	UNMK U52 DP 581715	ob249	346°00'00"	C		0.25 C		Class A
UNMK U49 DP 581715	UNMK U61 DP 581715	ob234	346°00'00"	C		0.25 C		Class A
UNMK U61 DP 581715	UNMK U62 DP 581715	ob250	76°00'00"	C		12.08 C		Class A
UNMK U62 DP 581715	UNMK U54 DP 581715	ob251	166°00'00"	C		0.25 C		Class A
UNMK U50 DP 581715	UNMK U63 DP 581715	ob237	346°00'00"	C		0.25 C		Class A
UNMK U63 DP 581715	UNMK U64 DP 581715	ob252	76°00'00"	C		12.08 C		Class A
UNMK U64 DP 581715	UNMK U53 DP 581715	ob253	166°00'00"	C		0.25 C		Class A
UNMK U51 DP 581715	UNMK U65 DP 581715	ob240	346°00'00"	C		0.25 C		Class A
UNMK U65 DP 581715	UNMK U66 DP 581715	ob254	76°00'00"	C		12.08 C		Class A
UNMK U66 DP 581715	UNMK U52 DP 581715	ob255	166°00'00"	C		0.25 C		Class A
1032 SO 48331	AP A SO 571106	ob2	347°45'50"	M		75.35 M		
AP A SO 571106	1033 SO 48319	ob265	344°37'30"	M		96.85 M		
AP A SO 571106	AP B SO 571106	ob266	352°55'00"	M		2.57 M		
1033 SO 48319	AP 2 DP 570508	ob6	87°24'40"	M		295.60 M		
AP 2 DP 570508	AP 1 DP 570508	ob272	107°21'00"	M		27.31 M		
AP 1 DP 570508	CP 4 DP 480341	ob273	98°51'40"	M		16.78 M		
CP 4 DP 480341	IT III DP 31045	ob274	277°36'40"	A	DP 480341	0°00'00"	15.79 A	DP 480341
AP A SO 571106	AP D DP 581715	ob267	75°19'40"	M		81.73 M		
AP D DP 581715	AP C DP 581715	ob289	3°12'00"	M		103.04 M		
AP C DP 581715	AP 2 DP 570508	ob291	95°12'30"	M		185.58 M		
1033 SO 48319	AP C DP 581715	ob7	74°42'20"	M		114.54 M		
IT I DP 50063	PEG VX DP 15331	ob18	100°45'00"	A	SO 24291	0°00'00"	52.92 A	DP 326201
PEG VX DP 15331	IP IV DP 30275	ob275	357°07'00"	A	DP 31045	0°00'00"	14.62 A	DP 31045
IP IV DP 30275	IT III DP 31045	ob292	100°45'00"	A	DP 30275	0°00'00"	165.48 A	DP 30275
IP IV DP 30275	IT II DP 50063	ob293	170°18'40"	A	DP 31045	0°00'00"	93.01 A	DP 50063
AP D DP 581715	AP F DP 581715	ob276	3°47'00"	M		40.01 M		
AP F DP 581715	AP H DP 581715	ob294	89°10'00"	M		12.16 M		
AP H DP 581715	NAIL L DP 581715	ob311	359°39'00"	M		18.78 M		
NAIL L DP 581715	AP C DP 581715	ob317	348°31'00"	M		44.91 M		
AP C DP 581715	AP O DP 581715	ob290	86°11'30"	M		70.76 M		
AP O DP 581715	AP 2 DP 570508	ob320	100°41'00"	M		116.23 M		

Mark and Vector

Survey Number DP 581715

Meridional Circuit Mount Eden 2000

From	To	Code	Bearing	Adpt Surv	Bearing Correction	Distance	Adpt Surv	Class
AP J DP 581715	DISK J/4 DP 581715	ob321	346°00'00"	M		2.72 M		Class A
AP J DP 581715	IR K DP 581715	ob322	75°25'00"	M		9.85 M		
IR K DP 581715	AP H DP 581715	ob326	352°19'00"	M		36.35 M		
AP F DP 581715	AP J DP 581715	ob295	168°58'00"	M		39.05 M		
AP D DP 581715	AP E DP 581715	ob277	6°56'00"	M		13.83 M		
AP E DP 581715	AP F DP 581715	ob329	2°08'00"	M		26.23 M		
AP F DP 581715	IR I DP 581715	ob296	281°22'00"	M		19.62 M		
IR I DP 581715	AP G DP 581715	ob347	164°37'00"	M		24.54 M		
AP G DP 581715	AP E DP 581715	ob356	118°36'00"	M		13.38 M		
IR I DP 581715	IR M DP 581715	ob348	348°09'00"	M		17.08 M		
IR M DP 581715	AP N DP 581715	ob370	101°01'00"	M		29.82 M		
AP N DP 581715	NAIL L DP 581715	ob376	53°45'00"	M		6.86 M		
AP 2 DP 570508	CP 4 DP 480341	ob271	104°08'00"	M		43.98 M		
AP D DP 581715	DISK D/1 DP 581715	ob278	42°15'00"	M		12.27 M		
AP D DP 581715	DISK D/2 DP 581715	ob279	23°21'00"	M		8.58 M		
AP D DP 581715	DISK D/3 DP 581715	ob280	36°18'00"	M		6.76 M		
AP D DP 581715	DISK D/4 DP 581715	ob281	56°44'00"	M		5.51 M		
AP D DP 581715	DISK D/5 DP 581715	ob282	329°03'00"	M		4.52 M		
AP D DP 581715	UNMK D/6 DP 581715	ob283	335°04'00"	C		6.95 C		
AP D DP 581715	DISK D/7 DP 581715	ob284	337°57'00"	M		9.42 M		
AP D DP 581715	PEG D/8 DP 581715	ob285	309°25'00"	M		11.61 M		
AP D DP 581715	PEG D/9 DP 581715	ob286	300°36'00"	M		9.72 M		
AP D DP 581715	PEG D/10 DP 581715	ob287	288°00'00"	M		8.16 M		
IR M DP 581715	UNMK M/1U DP 581715	ob371	74°18'00"	C		5.12 C		
IR M DP 581715	UNMK M/2U DP 581715	ob372	88°42'00"	C		10.93 C		
IR M DP 581715	PEG M/3 DP 581715	ob373	93°01'00"	M		16.94 M		
AP N DP 581715	PEG N/1 DP 581715	ob377	296°27'00"	M		8.93 M		
AP N DP 581715	PEG N/2 DP 581715	ob378	310°52'00"	M		4.81 M		
AP J DP 581715	IB J/1 DP 581715	ob323	131°51'00"	M		2.37 M		

Mark and Vector

Survey Number DP 581715

Meridional Circuit Mount Eden 2000

From	To	Code	Bearing	Adpt Surv	Bearing Correction	Distance	Adpt Surv	Class
AP J DP 581715	IB J/2 DP 581715	ob324	358°04'00"	M		6.37 M		
IR K DP 581715	UNMK K/1U DP 581715	ob327	25°17'00"	C		7.91 C		
IR P DP 581715	UNMK P/1U DP 581715	ob382	144°19'00"	C		6.97 C		
AP H DP 581715	PEG H/1 DP 581715	ob312	80°25'00"	M		1.70 M		
AP H DP 581715	UNMK H/2U DP 581715	ob313	154°52'00"	C		7.87 C		
IR P DP 581715	UNMK P/2U DP 581715	ob383	56°49'00"	C		2.91 C		
AP H DP 581715	DISK H/4 DP 581715	ob314	254°25'00"	M		4.68 M		
AP H DP 581715	DISK H/5 DP 581715	ob315	268°54'00"	M		4.80 M		
AP E DP 581715	DISK E/1 DP 581715	ob330	161°47'00"	M		3.60 M		
AP E DP 581715	DISK E/2 DP 581715	ob331	152°23'00"	M		1.12 M		
AP E DP 581715	DISK E/3 DP 581715	ob332	356°36'00"	M		1.43 M		
AP E DP 581715	DISK E/4 DP 581715	ob333	349°51'00"	M		3.92 M		
AP E DP 581715	DISK E/5 DP 581715	ob334	348°21'00"	M		6.42 M		
AP E DP 581715	DISK E/6 DP 581715	ob335	347°42'00"	M		8.92 M		
AP E DP 581715	IB E/7 DP 581715	ob336	16°34'00"	M		10.35 M		
AP E DP 581715	DISK E/8 DP 581715	ob337	25°23'00"	M		8.29 M		
AP E DP 581715	DISK E/9 DP 581715	ob338	39°24'00"	M		6.56 M		
AP E DP 581715	DISK E/10 DP 581715	ob339	61°00'00"	M		5.45 M		
AP E DP 581715	DISK E/11 DP 581715	ob340	87°42'00"	M		5.38 M		
AP E DP 581715	DISK E/12 DP 581715	ob341	110°18'00"	M		6.37 M		
AP E DP 581715	IB E/13 DP 581715	ob342	77°22'00"	M		6.60 M		
AP E DP 581715	IB E/14 DP 581715	ob343	28°13'00"	M		9.82 M		
AP E DP 581715	IB E/15 DP 581715	ob344	21°04'00"	M		11.48 M		
AP E DP 581715	IB E/16 DP 581715	ob345	23°27'00"	M		11.84 M		

Mark and Vector

Survey Number DP 581715

Meridional Circuit Mount Eden 2000

From	To	Code	Bearing	Adpt Surv	Bearing Correction	Distance	Adpt Surv	Class
AP E DP 581715	DISK E/17 DP 581715	ob346	14°45'00" M			12.32 M		
AP G DP 581715	PEG G/1 DP 581715	ob357	251°53'00" M			2.01 M		
AP G DP 581715	PEG G/2 DP 581715	ob358	203°13'00" M			3.32 M		
AP G DP 581715	PEG G/3 DP 581715	ob359	187°19'00" M			5.52 M		
AP G DP 581715	PEG G/4 DP 581715	ob360	180°43'00" M			7.90 M		
AP G DP 581715	PEG G/5 DP 581715	ob361	177°12'00" M			10.34 M		
AP G DP 581715	DISK G/6 DP 581715	ob362	146°30'00" M			10.76 M		
AP G DP 581715	DISK G/7 DP 581715	ob363	140°50'00" M			8.45 M		
AP G DP 581715	UNMK G/8 DP 581715	ob364	131°04'00" C			6.27 C		
AP G DP 581715	DISK G/9 DP 581715	ob365	112°21'00" M			4.46 M		
AP G DP 581715	DISK G/10 DP 581715	ob366	78°18'00" M			3.60 M		
AP G DP 581715	IB G/11 DP 581715	ob367	336°14'00" M			1.77 M		
AP G DP 581715	IB G/12 DP 581715	ob368	343°27'00" M			6.77 M		
AP G DP 581715	IB G/13 DP 581715	ob369	344°24'00" M			10.79 M		
AP F DP 581715	DISK F/1 DP 581715	ob297	104°23'00" M			3.57 M		
AP F DP 581715	DISK F/2 DP 581715	ob298	133°56'00" M			2.00 M		
AP F DP 581715	DISK F/3 DP 581715	ob299	15°04'00" M			2.19 M		
AP F DP 581715	DISK F/4 DP 581715	ob300	317°46'00" M			2.17 M		
AP F DP 581715	IB F/5 DP 581715	ob301	334°33'00" M			5.18 M		
AP F DP 581715	IB F/6 DP 581715	ob302	336°11'00" M			5.15 M		
AP F DP 581715	DISK F/7 DP 581715	ob303	312°39'00" M			4.65 M		
AP F DP 581715	DISK F/8 DP 581715	ob304	274°13'00" M			2.69 M		
AP F DP 581715	DISK F/9 DP 581715	ob305	287°51'00" M			1.59 M		
AP F DP 581715	DISK F/10 DP 581715	ob306	211°45'00" M			1.89 M		

Mark and Vector

Survey Number DP 581715

Meridional Circuit Mount Eden 2000

From	To	Code	Bearing	Adpt Surv	Bearing Correction	Distance	Adpt Surv	Class
AP F DP 581715	DISK F/11 DP 581715	ob307	180°14'00" M			5.51 M		
AP F DP 581715	DISK F/12 DP 581715	ob308	167°41'00" M			2.90 M		
AP F DP 581715	DISK F/13 DP 581715	ob309	174°14'00" M			9.46 M		
AP F DP 581715	DISK F/14 DP 581715	ob310	166°28'00" M			10.49 M		
IR I DP 581715	PEG I/1 DP 581715	ob349	205°20'00" M			2.23 M		
IR I DP 581715	DISK I/2 DP 581715	ob350	160°16'00" M			2.94 M		
IR I DP 581715	DISK I/3 DP 581715	ob351	92°38'00" M			6.02 M		
IR I DP 581715	IB I/4 DP 581715	ob352	84°49'00" M			11.29 M		
IR I DP 581715	IB I/5 DP 581715	ob353	84°42'00" M			11.44 M		
DISK I/8 DP 581715	DISK I/6 DP 581715	ob161	92°38'00" M			1.42 M		
IR I DP 581715	DISK I/7 DP 581715	ob354	100°48'00" M			10.79 M		
DISK I/3 DP 581715	DISK I/8 DP 581715	ob147	92°38'00" M			4.20 M		
IR I DP 581715	DISK I/9 DP 581715	ob355	164°16'00" M			9.73 M		
PEG K/1 DP 581715	UNMK K/1U DP 581715	ob381	76°00'00" C			0.80 C		Class A
IR K DP 581715	PEG K/1 DP 581715	ob325	20°30'00" M			7.43 M		
IR K DP 581715	IR P DP 581715	ob328	353°24'00" M			20.19 M		
IR P DP 581715	AP H DP 581715	ob384	350°57'00" M			16.16 M		
DISK P/1 DP 581715	UNMK P/1U DP 581715	ob387	76°00'00" C			0.80 C		Class A
DISK P/2 DP 581715	UNMK P/2U DP 581715	ob388	76°00'00" C			0.95 C		Class A
DISK H/2 DP 581715	UNMK H/2U DP 581715	ob389	76°00'00" C			1.00 C		Class A
IR P DP 581715	DISK P/1 DP 581715	ob385	150°41'00" M			6.71 M		
IR P DP 581715	DISK P/2 DP 581715	ob386	48°00'00" M			2.03 M		
AP H DP 581715	DISK H/2 DP 581715	ob316	162°09'00" M			7.74 M		
NAIL L DP 581715	BS L/1 DP 581715	ob318	218°50'00" M			2.95 M		
NAIL L DP 581715	PEG L/2 DP 581715	ob319	191°58'00" M			5.54 M		

Mark and Vector

Survey Number DP 581715

Meridional Circuit Mount Eden 2000

From	To	Code	Bearing	Adpt Surv	Bearing Correction	Distance	Adpt Surv	Class
AP N DP 581715	BS L/1 DP 581715	ob379	64°27'00" M			4.08 M		
AP N DP 581715	PEG L/2 DP 581715	ob380	107°17'00" M			4.59 M		
DISK M/2 DP 581715	UNMK M/2U DP 581715	ob390	346°00'00" C			1.10 C		Class A
DISK M/1 DP 581715	UNMK M/1U DP 581715	ob391	346°00'00" C			1.10 C		Class A
IR M DP 581715	DISK M/1 DP 581715	ob374	86°30'00" M			5.21 M		
IR M DP 581715	DISK M/2 DP 581715	ob375	94°11'00" M			11.22 M		
AP D DP 581715	DISK D/11 DP 581715	ob288	271°59'00" M			7.20 M		

Mark Name	Mark Condition	Description
1032 SO 48331		SS Mark under lid in Footpath [CD6W]
1033 SO 48319		SS Mark under lid in Crossing [CD6V] [RL = 55.85]
AP 1 DP 570508		Al Pin flush in Crossing [RL = 56.34]
AP 2 DP 570508		Al Pin flush in Crossing [RL = 55.06]
AP A SO 571106		Al Pin flush in Crossing [RL = 56.54]
AP B SO 571106		Al Pin flush in Crossing
AP C DP 581715		Al Pin flush in Crossing [RL = 49.54]
AP D DP 581715		Al Pin flush in Concrete [RL = 49.26]
AP E DP 581715		Al Pin flush in Concrete
AP F DP 581715		Al Pin flush in Concrete
AP G DP 581715		Al Pin flush in Concrete
AP H DP 581715		Al Pin flush in Concrete
AP J DP 581715		Al Pin flush in Concrete
AP N DP 581715		Al Pin flush in Manhole Lid
AP O DP 581715		Al Pin flush in Footpath
BS L/1 DP 581715		Bridge Spike in Seal [No Record] [PEG (4) DP 50063 Reinstated]
CP 4 DP 480341		Copper Pin flush in Crossing
DISK D/1 DP 581715		Al Disk in Concrete
DISK D/11 DP 581715		Al Disk in Concrete Driveway [DISC MX DP 568437 Reinstated]
DISK D/2 DP 581715		Al Disk in Concrete
DISK D/3 DP 581715		Al Disk in Concrete
DISK D/4 DP 581715		Al Disk in Concrete
DISK D/5 DP 581715		Al Disk in Concrete

Mark and Vector

Survey Number DP 581715
Meridional Circuit Mount Eden 2000

Mark Name	Mark Condition	Description
DISK D/7 DP 581715		Al Disk in Concrete
DISK E/1 DP 581715		Al Disk in Concrete
DISK E/10 DP 581715		Al Disk in Concrete
DISK E/11 DP 581715		Al Disk in Concrete
DISK E/12 DP 581715		Al Disk in Concrete
DISK E/17 DP 581715		Al Disk in Concrete
DISK E/2 DP 581715		Al Disk in Concrete
DISK E/3 DP 581715		Al Disk in Concrete
DISK E/4 DP 581715		Al Disk in Concrete
DISK E/5 DP 581715		Al Disk in Concrete
DISK E/6 DP 581715		Al Disk in Concrete
DISK E/8 DP 581715		Al Disk in Concrete
DISK E/9 DP 581715		Al Disk in Concrete
DISK F/1 DP 581715		Al Disk in Concrete
DISK F/10 DP 581715		Al Disk in Concrete
DISK F/11 DP 581715		Al Disk in Concrete
DISK F/12 DP 581715		Al Disk in Concrete
DISK F/13 DP 581715		Al Disk in Concrete
DISK F/14 DP 581715		Al Disk in Concrete
DISK F/2 DP 581715		Al Disk in Concrete
DISK F/3 DP 581715		Al Disk in Concrete
DISK F/4 DP 581715		Al Disk in Concrete
DISK F/7 DP 581715		Al Disk in Concrete
DISK F/8 DP 581715		Al Disk in Concrete
DISK F/9 DP 581715		Al Disk in Concrete
DISK G/10 DP 581715		Al Disk in Concrete
DISK G/6 DP 581715		Al Disk in Concrete
DISK G/7 DP 581715		Al Disk in Concrete
DISK G/9 DP 581715		Al Disk in Concrete
DISK H/2 DP 581715		Al Disk atop Retaining Wall [Line Mark]
DISK H/4 DP 581715		Al Disk in Concrete
DISK H/5 DP 581715		Al Disk in Concrete
DISK I/2 DP 581715		Al Disk in Concrete
DISK I/3 DP 581715		Al Disk in Concrete
DISK I/6 DP 581715		Al Disk in Concrete

Mark and Vector

Survey Number DP 581715
Meridional Circuit Mount Eden 2000

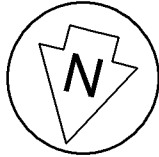
Mark Name	Mark Condition	Description
DISK I/7 DP 581715		Al Disk in Concrete
DISK I/8 DP 581715		Al Disk in Concrete
DISK I/9 DP 581715		Al Disk in Concrete
DISK J/3 DP 581715		Al Disk atop Retaining Wall
DISK J/4 DP 581715		Al Disk in Concrete
DISK J/5 DP 581715		Al Disk in Concrete
DISK M/1 DP 581715		Al Disk atop Fence [Line Mark]
DISK M/2 DP 581715		Al Disk atop Fence [Line Mark]
DISK P/1 DP 581715		Al Disk atop Retaining Wall [Line Mark]
DISK P/2 DP 581715		Al Disk atop Retaining Wall [Line Mark]
IB E/13 DP 581715		Iron Bar in Metal
IB E/14 DP 581715		Iron Bar in Metal
IB E/15 DP 581715		Iron Bar in Metal
IB E/16 DP 581715		Iron Bar in Metal
IB E/7 DP 581715		Iron Bar in Metal
IB F/5 DP 581715		Iron Bar in Slab Footing
IB F/6 DP 581715		Iron Bar in Slab Footing
IB G/11 DP 581715		Iron Bar in Metal
IB G/12 DP 581715		Iron Bar in Metal
IB G/13 DP 581715		Iron Bar in Metal
IB I/4 DP 581715		Iron Bar in Slab Footing
IB I/5 DP 581715		Iron Bar in Slab Footing
IB J/1 DP 581715		Iron Bar atop Retaining Wall
IB J/2 DP 581715		Iron Bar in Metal
IR I DP 581715		Iron Rod Flush in Metal
IR K DP 581715		Iron Rod Flush in Metal
IR M DP 581715		Iron Rod Flush in Metal
IR P DP 581715		Iron Rod flush in Metal
NAIL L DP 581715		Nail Flush in Seal
PEG D/10 DP 581715		Peg 0.20 W of Fence
PEG D/8 DP 581715		Peg 0.20 W of Fence
PEG D/9 DP 581715		Peg 0.20 W of Fence
PEG G/1 DP 581715		Peg 0.20 W of Fence
PEG G/2 DP 581715		Peg 0.20 W of Fence
PEG G/3 DP 581715		Peg 0.20 W of Fence

Mark and Vector

Survey Number DP 581715
Meridional Circuit Mount Eden 2000

Mark Name	Mark Condition	Description
PEG G/4 DP 581715		Peg 0.20 W of Fence
PEG G/5 DP 581715		Peg 0.20 W of Fence
PEG H/1 DP 581715		Peg 0.50 E of Retaining Wall
PEG I/1 DP 581715		Peg 0.50 W of Fence
PEG K/1 DP 581715		Peg at W face of Retaining Wall [Line Mark]
PEG L/2 DP 581715		Peg 0.50 E of Retaining Wall [PEG (3) DP 50063 Reinstated]
PEG M/3 DP 581715		Peg 0.50 N of Fence
PEG N/1 DP 581715		Peg 0.50 N of Fence
PEG N/2 DP 581715		Peg 0.50 N of Fence
UNMK D/6 DP 581715		Impracticable to Mark, Inside Manhole Lid
UNMK G/8 DP 581715		Impracticable to Mark, Inside Services Lid
UNMK H/2U DP 581715		Impracticable to Mark, Inside Tree Trunk
UNMK K/1U DP 581715		Impracticable to Mark, Inside Tree Trunk
UNMK M/1U DP 581715		Impracticable to Mark, Inside Small Space Between Fences
UNMK M/2U DP 581715		Impracticable to Mark, Inside Small Space Between Fences
UNMK P/1U DP 581715		Impracticable to Mark, Inside Tree Trunk
UNMK P/2U DP 581715		Impracticable to Mark, Inside Tree Trunk
AP A DP 568437	Destroyed	
IP IV DP 30275	Destroyed	
IS III DP 76264	Destroyed	
IS IV DP 76264	Destroyed	
IS VII DP 76264	Destroyed	
IT 6 SO 566841	Destroyed	
IT I DP 50063	Destroyed	
IT II DP 50063	Destroyed	
IT III DP 50063	Destroyed	
IT IV DP 50063	Destroyed	
IT V DP 76264	Destroyed	
MA 4 SO 566841	Destroyed	
PEG VX DP 15331	Destroyed	

*** End of Report ***



LOT 3
DP 17147

LEGEND

- PRIMARY PARCEL BOUNDARY ABOVE RL AS STATED
- - - PRIMARY PARCEL BOUNDARY BELOW RL AS STATED
- - - SECONDARY PARCEL BOUNDARY ABOVE RL AS STATED
- - - LOWER LEVEL BUILDING OUTLINE
- - - UPPER LEVEL BUILDING OUTLINE
- - - ROOF / GUTTER OUTLINE
- - - ABUTTALS

NOTES

1. REDUCED LEVELS ARE IN TERMS OF AUCLAND VERTICAL DATUM 1946
2. ORIGIN OF LEVELS: 1033 SO 48319 [CD6V] RL = 55.85 (SOURCE SO 54122)
3. REFER TO T SHEETS FOR DIMENSIONS, AREAS AND LABELS NOT SHOWN ON THESE PLAN GRAPHICS
4. THE AREAS SHOWN FOR HL LOTS 11, 12, 13, 14, 15 & 2000 ARE AS PROJECTED TO THE HORIZONTAL PLANE (CSR2021 r.41(4))
5. BUILDINGS WERE UNDER CONSTRUCTION AT TIME OF SURVEY, LINEWORK IS FROM BUILDING PLANS
6. REFER TO OCCUPATION DIAGRAM FOR OCCUPATION TO GROUND FLOOR OF BUILDINGS

LOT 2 DP 50063

LOT 1 DP 50063

PART LOT 6 DP 17147

LOT 2
DP 17147

LOT 1
DP 121673

LOT 2
DP 76264

LOT 2
DP 49736

LOT 10

LOT 9

LOT 8

LOT 7

LOT 6

LOT 5

HL LOT 11
0.0112ha

HL LOT 12
0.0111ha

HL LOT 13
0.0112ha

HL LOT 14
0.0111ha

HL LOT 15
0.0120ha

SHEET 2

SHEET 3



LOT 8
DP 17147

LOT 1

LOT 2

LOT 3

LOT 4

LOT 1000

- LOT 101
- LOT 102
- LOT 103
- LOT 104
- LOT 105
- LOT 106
- LOT 107
- LOT 108

- LOT 109
- LOT 110
- LOT 111
- LOT 112
- LOT 113
- LOT 114
- LOT 115

HL LOT 2000

Y

Z

LOT 16
DP 568437

PART LOT 7 DP 12336

AA

OVERVIEW PLAN OF HEIGHT-LIMITED BOUNDARIES (AS SHOWN ABOVE RL 49.75)

Land District : North Auckland
Territorial Authority : Auckland Council
TA Reference : SRV90/106635 (Central)



Lots 1-15, 101-115, 1000 & 2000 being
Subdivision of Lot 300 DP 568437

Scale at A4 : 1:300

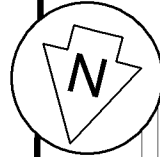
Surveyor : Reece Allan Moody

Maven Ref : 109021 (37 Upland Road Stage 2)

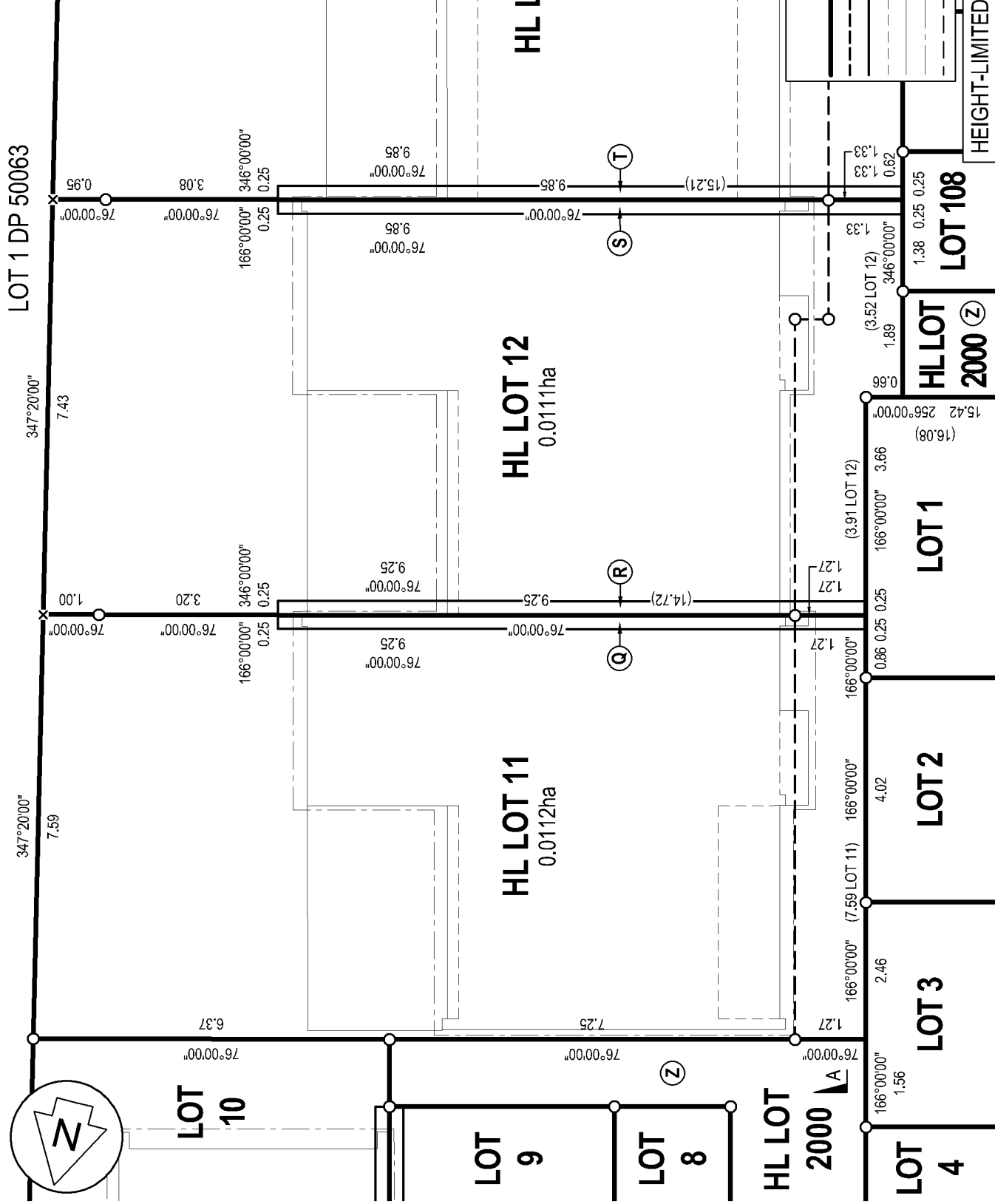
Sheet 1 of 4

DP 581715

LOT 1 DP 50063



- NOTES**
1. REDUCED LEVELS ARE IN TERMS OF AUCKLAND VERTICAL DATUM 1946
 2. ORIGIN OF LEVELS: 1033 SO 48319 [CD6V] RL = 55.85 (SOURCE SO 54122)
 3. REFER TO T SHEETS FOR DIMENSIONS, AREAS AND LABELS NOT SHOWN ON THESE PLAN GRAPHICS
 4. THE AREAS SHOWN FOR HL LOTS 11, 12, 13, 14, 15 & 2000 ARE AS PROJECTED TO THE HORIZONTAL PLANE (CSR2021 r.41(4))
 5. BUILDINGS WERE UNDER CONSTRUCTION AT TIME OF SURVEY, LINEWORK IS FROM BUILDING PLANS
 6. REFER TO OCCUPATION DIAGRAM FOR OCCUPATION TO GROUND FLOOR OF BUILDINGS



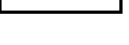
- LEGEND**
- PRIMARY PARCEL BOUNDARY ABOVE RL AS STATED
 - - - PRIMARY PARCEL BOUNDARY BELOW RL AS STATED
 - - - SECONDARY PARCEL BOUNDARY ABOVE RL AS STATED
 - - - LOWER LEVEL BUILDING OUTLINE
 - - - UPPER LEVEL BUILDING OUTLINE
 - - - ROOF / GUTTER OUTLINE
 - - - ABUTTALS

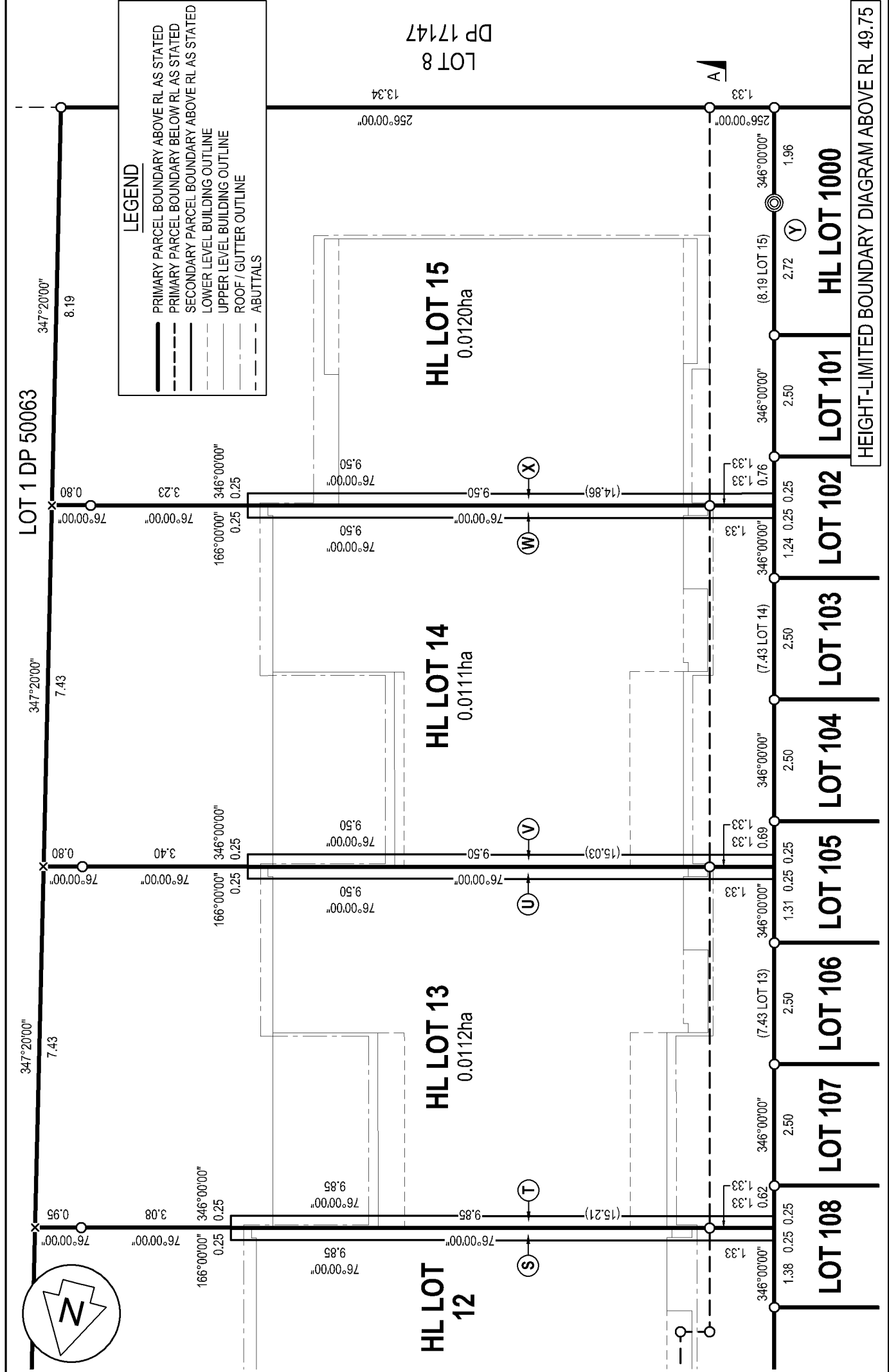
HEIGHT-LIMITED BOUNDARY DIAGRAM ABOVE RL 49.75

Scale at A4 : 1:100
 Surveyor : Reece Allan Moody
 Mavens Ref : 109021 (37 Upland Road Stage 2)

**Lots 1-15, 101-115, 1000 & 2000 being
 Subdivision of Lot 300 DP 568437**

Land District : North Auckland
 Territorial Authority : Auckland Council
 TA Reference : SRV90/106635 (Central)





LEGEND

- PRIMARY PARCEL BOUNDARY ABOVE RL AS STATED
- - - PRIMARY PARCEL BOUNDARY BELOW RL AS STATED
- SECONDARY PARCEL BOUNDARY ABOVE RL AS STATED
- - - SECONDARY PARCEL BOUNDARY BELOW RL AS STATED
- UPPER LEVEL BUILDING OUTLINE
- - - LOWER LEVEL BUILDING OUTLINE
- ROOF / GUTTER OUTLINE
- - - ABUTTALS

HEIGHT-LIMITED BOUNDARY DIAGRAM ABOVE RL 49.75

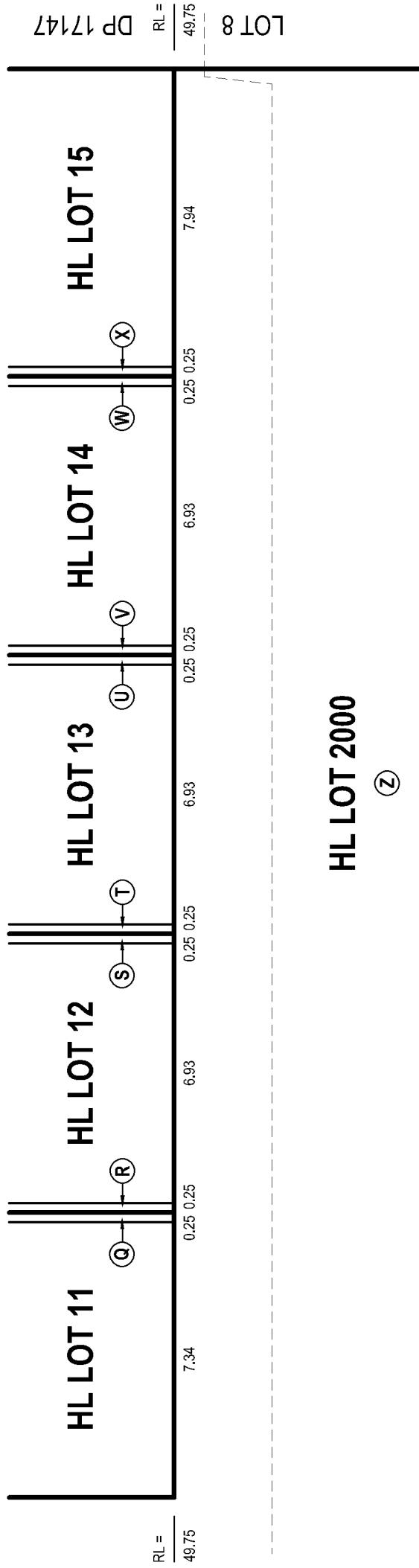
	Land District : North Auckland Territorial Authority : Auckland Council TA Reference : SRV90/106635 (Central)	Scale at A4 : 1:100 Surveyor : Reece Allan Moody Maven Ref : 109021 (37 Upland Road Stage 2)	Sheet 3 of 4 DP 581715
	Lots 1-15, 101-115, 1000 & 2000 being Subdivision of Lot 300 DP 568437		

LEGEND

- PRIMARY PARCEL BOUNDARY IN SECTION
- SECONDARY PARCEL BOUNDARY IN SECTION
- - - INDICATIVE GROUND LINE

NOTES

1. REDUCED LEVELS ARE IN TERMS OF AUCKLAND VERTICAL DATUM 1946
2. ORIGIN OF LEVELS: 1033 SO 48319 [CD6V]
RL = 55.85 (SOURCE SO 54122)
3. REFER TO T SHEETS FOR DIMENSIONS, AREAS AND LABELS NOT SHOWN ON THESE PLAN GRAPHICS
4. THE AREAS SHOWN FOR HL LOTS 11, 12, 13, 14, 15 & 2000 ARE AS PROJECTED TO THE HORIZONTAL PLANE (CSR2021 r.41(4))
5. BUILDINGS WERE UNDER CONSTRUCTION AT TIME OF SURVEY, LINEWORK IS FROM BUILDING PLANS
6. REFER TO OCCUPATION DIAGRAM FOR OCCUPATION TO GROUND FLOOR OF BUILDINGS



SECTION VIEW A

	Land District : North Auckland Territorial Authority : Auckland Council TA Reference : SRV90/106635 (Central)	Scale at A4 : 1:150 Surveyor : Reece Allan Moody Mavens Ref : 109021 (37 Upland Road Stage 2)	Sheet 4 of 4 DP 581715
	Lots 1-15, 101-115, 1000 & 2000 being Subdivision of Lot 300 DP 568437		



LAND DISTRICT

NORTH AUCKLAND

PLAN NUMBER

DP 581715

TERRITORIAL AUTHORITY

AUCKLAND COUNCIL

TERRITORIAL AUTHORITY REFERENCE

SRV90106635 (CENTRAL)

MEMORANDUM OF EASEMENTS			
PURPOSE	SHOWN	BURDENED LAND	BENEFITED LAND
PARTY WALL	A	LOT 1 HEREON	LOT 2 HEREON
	B	LOT 2 HEREON	LOT 1 HEREON
	C	LOT 2 HEREON	LOT 3 HEREON
	D	LOT 3 HEREON	LOT 2 HEREON
	E	LOT 3 HEREON	LOT 4 HEREON
	F	LOT 4 HEREON	LOT 3 HEREON
	G	LOT 5 HEREON	LOT 6 HEREON
	H	LOT 6 HEREON	LOT 5 HEREON
	I	LOT 6 HEREON	LOT 7 HEREON
	J	LOT 7 HEREON	LOT 6 HEREON
	K	LOT 7 HEREON	LOT 8 HEREON
	L	LOT 8 HEREON	LOT 7 HEREON
	M	LOT 8 HEREON	LOT 9 HEREON
	N	LOT 9 HEREON	LOT 8 HEREON
	O	LOT 9 HEREON	LOT 10 HEREON
	P	LOT 10 HEREON	LOT 9 HEREON
HL Q	HL LOT 11 HEREON	HL LOT 12 HEREON	
HL R	HL LOT 12 HEREON	HL LOT 11 HEREON	

MEMORANDUM OF EASEMENTS (CONTINUED)			
PURPOSE	SHOWN	BURDENED LAND	BENEFITED LAND
PARTY WALL	HL S	HL LOT 12 HEREON	HL LOT 13 HEREON
	HL T	HL LOT 13 HEREON	HL LOT 12 HEREON
	HL U	HL LOT 13 HEREON	HL LOT 14 HEREON
	HL V	HL LOT 14 HEREON	HL LOT 13 HEREON
	HL W	HL LOT 14 HEREON	HL LOT 15 HEREON
	HL X	HL LOT 15 HEREON	HL LOT 14 HEREON
RIGHT OF WAY RIGHT TO DRAIN WATER RIGHT TO DRAIN SEWAGE RIGHT TO CONVEY WATER RIGHT TO CONVEY GAS RIGHT TO CONVEY ELECTRICITY RIGHT TO CONVEY TELECOMMUNICATIONS	Y, AA, AB	LOT 1000 HEREON	LOTS 1-10 & HL LOTS 11-15 HEREON
	HL Z	HL LOT 2000 HEREON	

SCHEDULE OF EASEMENTS IN GROSS			
PURPOSE	SHOWN	BURDENED LAND	GRANTEE
RIGHT TO CONVEY TELECOMMUNICATIONS	Y, AA, AB	LOT 1000 HEREON	CHORUS NEW ZEALAND LIMITED
	HL Z	HL LOT 2000 HEREON	

SCHEDULE OF EXISTING EASEMENTS			
PURPOSE	SHOWN	BURDENED LAND	CREATED BY
RIGHT OF WAY	AB	LOT 1000 HEREON	A37825
	AC	LOT 10 HEREON	688459
	AA, AB	LOT 1000 HEREON	12542713.2
RIGHT OF WAY RIGHT TO DRAIN WATER RIGHT TO DRAIN SEWAGE RIGHT TO CONVEY WATER RIGHT TO CONVEY GAS RIGHT TO CONVEY ELECTRICITY RIGHT TO CONVEY TELECOMMUNICATIONS	AA, AB	LOT 1000 HEREON	12325441.2

HEIGHT-LIMITED PARCELS

HL LOTS 11, 12, 13, 14, 15 & 2000 AND HL AREAS Q, R, S, T, U, V, W, X & Z ARE LIMITED IN HEIGHT, REFER TO ENCLOSED PLAN GRAPHIC SHEETS

REDUCED LEVELS HEREON ARE IN TERMS OF AUCKLAND VERTICAL DATUM 1946

ORIGIN OF LEVELS: 1033 SO 48319 [CD6V], RL= 55.85

SOURCED FROM SO 54122 (SHEET 1)

AMALGAMATION CONDITIONS

THAT LOT 1000 HEREON (LEGAL ACCESS) BE HELD AS TO FIFTEEN UNDIVIDED ONE-FIFTEENTH SHARES BY THE OWNERS OF LOTS 1, 2, 3, 4, 5, 6, 7, 8, 9, 10, HL 11, HL 12, HL 13, HL 14 & HL 15 HEREON AS TENANTS IN COMMON IN THE SAID SHARES AND INDIVIDUAL RECORDS OF TITLE BE ISSUED IN ACCORDANCE THEREWITH

THAT HL LOT 2000 HEREON (LEGAL ACCESS) BE HELD AS TO FIFTEEN UNDIVIDED ONE-FIFTEENTH SHARES BY THE OWNERS OF LOTS 1, 2, 3, 4, 5, 6, 7, 8, 9, 10, HL 11, HL 12, HL 13, HL 14 & HL 15 HEREON AS TENANTS IN COMMON IN THE SAID SHARES AND INDIVIDUAL RECORDS OF TITLE BE ISSUED IN ACCORDANCE THEREWITH

THAT LOTS 1 & 101 HEREON BE HELD IN THE SAME RECORD OF TITLE

THAT LOTS 2 & 102 HEREON BE HELD IN THE SAME RECORD OF TITLE

THAT LOTS 3 & 103 HEREON BE HELD IN THE SAME RECORD OF TITLE

THAT LOTS 4 & 104 HEREON BE HELD IN THE SAME RECORD OF TITLE

THAT LOTS 5 & 105 HEREON BE HELD IN THE SAME RECORD OF TITLE

THAT LOTS 6 & 106 HEREON BE HELD IN THE SAME RECORD OF TITLE

THAT LOTS 7 & 107 HEREON BE HELD IN THE SAME RECORD OF TITLE

THAT LOTS 8 & 108 HEREON BE HELD IN THE SAME RECORD OF TITLE

THAT LOTS 9 & 109 HEREON BE HELD IN THE SAME RECORD OF TITLE

THAT LOTS 10 & 110 HEREON BE HELD IN THE SAME RECORD OF TITLE

THAT LOTS HL 11 & 111 HEREON BE HELD IN THE SAME RECORD OF TITLE

THAT LOTS HL 12 & 112 HEREON BE HELD IN THE SAME RECORD OF TITLE

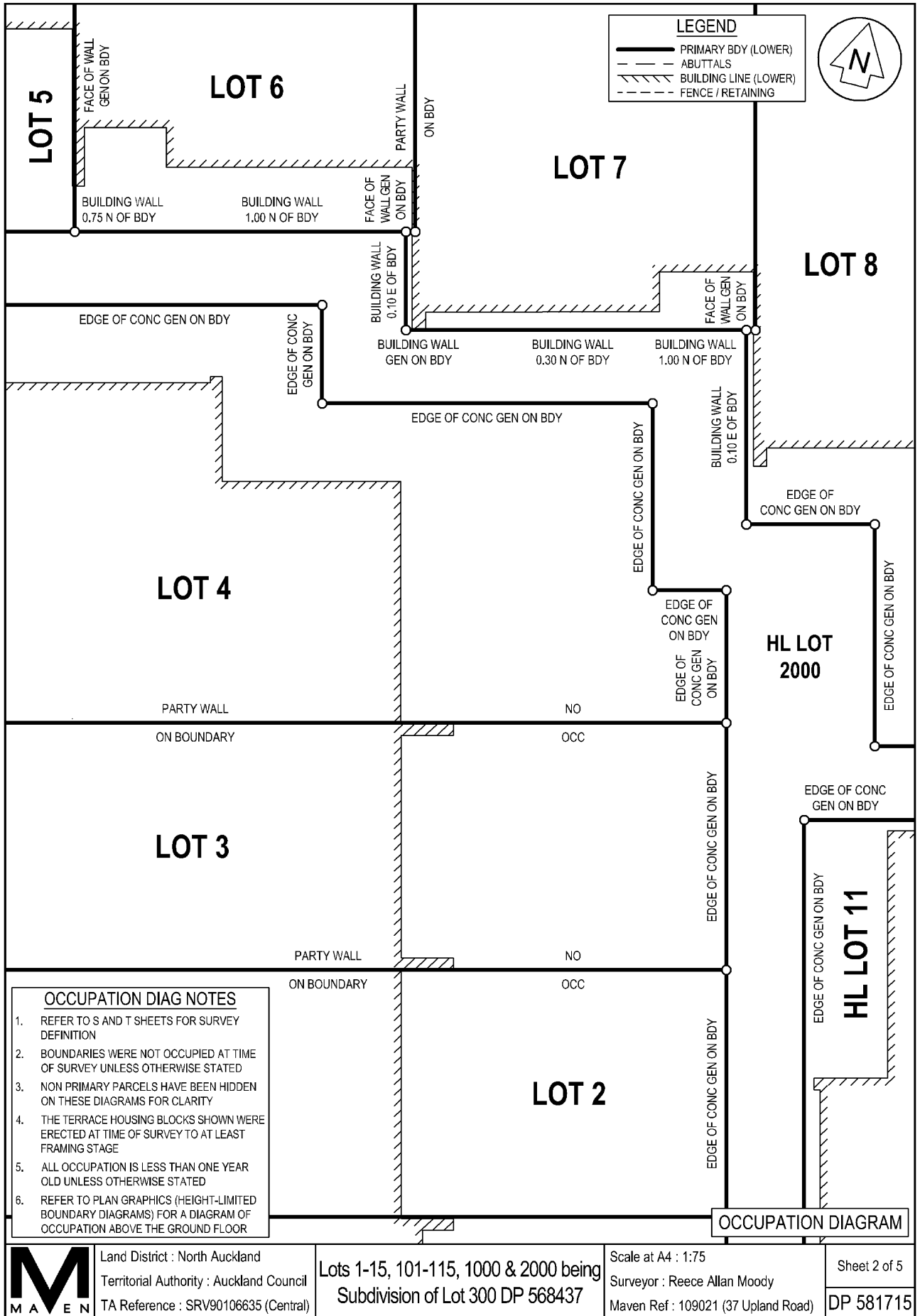
THAT LOTS HL 13 & 113 HEREON BE HELD IN THE SAME RECORD OF TITLE

THAT LOTS HL 14 & 114 HEREON BE HELD IN THE SAME RECORD OF TITLE

THAT LOTS HL 15 & 115 HEREON BE HELD IN THE SAME RECORD OF TITLE

(CSN REQUEST 1741833)

Occupation Diagram



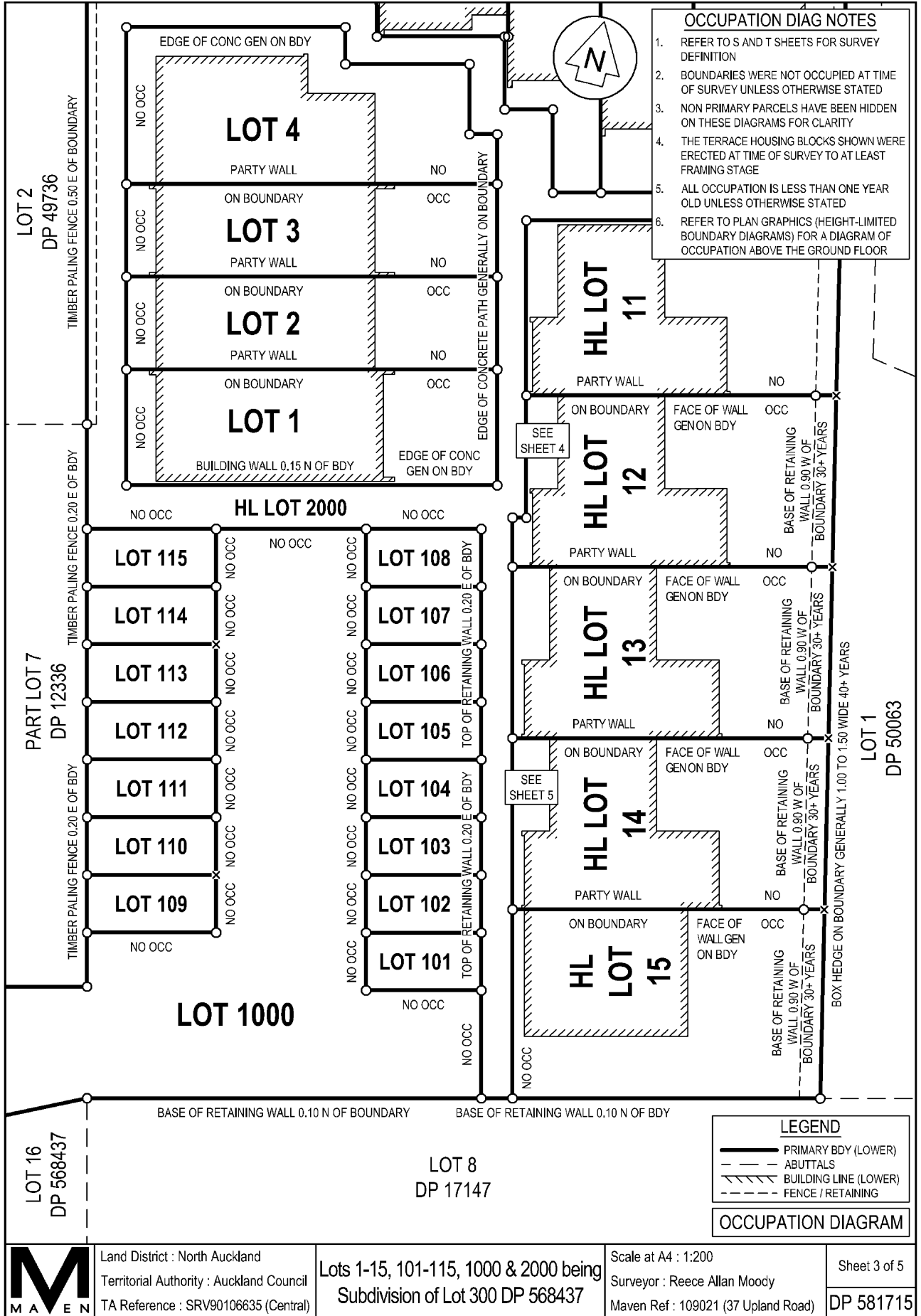
Land District : North Auckland
 Territorial Authority : Auckland Council
 TA Reference : SRV90106635 (Central)

Lots 1-15, 101-115, 1000 & 2000 being
 Subdivision of Lot 300 DP 568437

Scale at A4 : 1:75
 Surveyor : Reece Allan Moody
 Maven Ref : 109021 (37 Upland Road)

Sheet 2 of 5
 DP 581715

Occupation Diagram



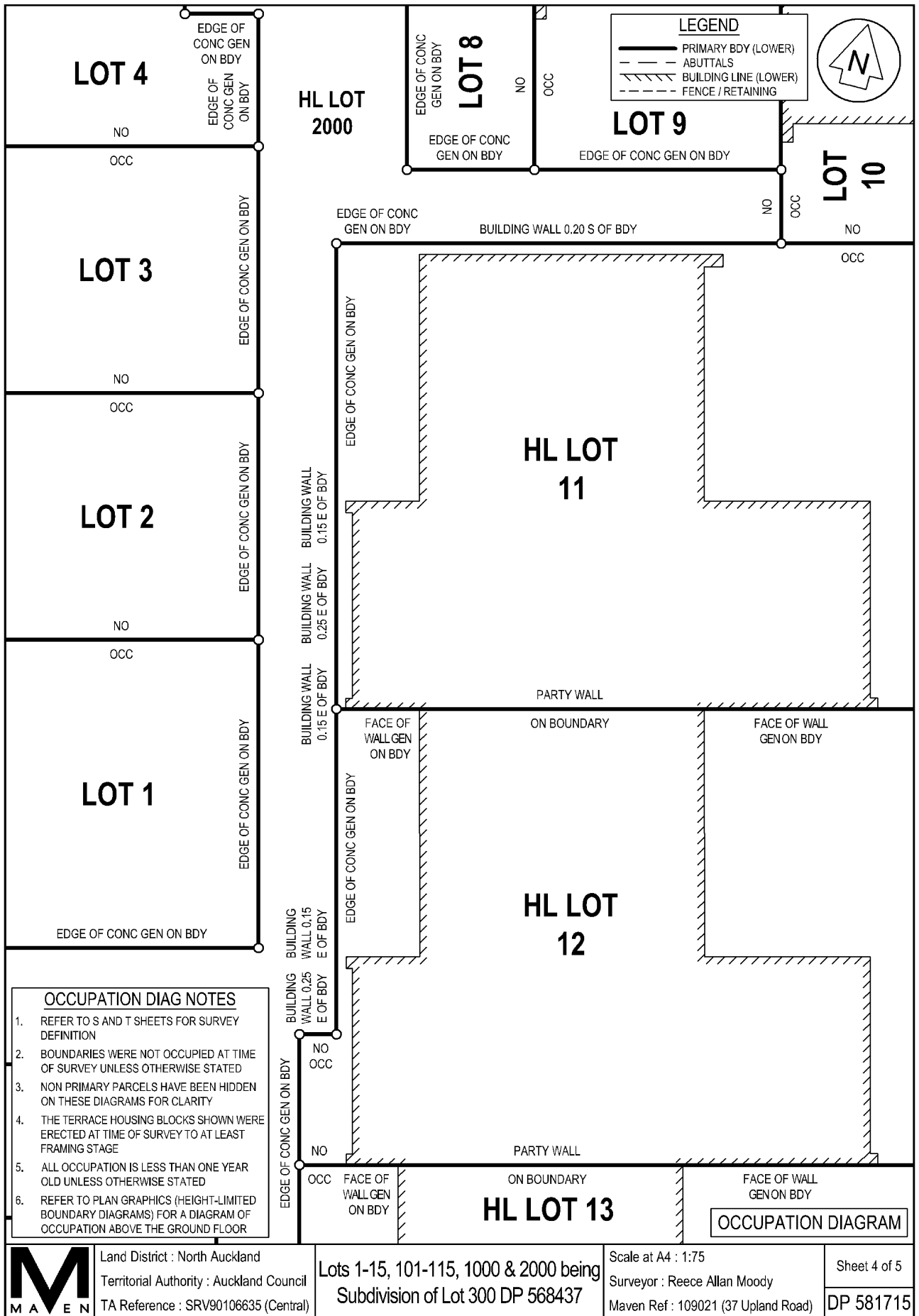
Land District : North Auckland
Territorial Authority : Auckland Council
TA Reference : SRV90106635 (Central)

Lots 1-15, 101-115, 1000 & 2000 being
Subdivision of Lot 300 DP 568437

Scale at A4 : 1:200
Surveyor : Reece Allan Moody
Maven Ref : 109021 (37 Upland Road)

Sheet 3 of 5
DP 581715

Occupation Diagram



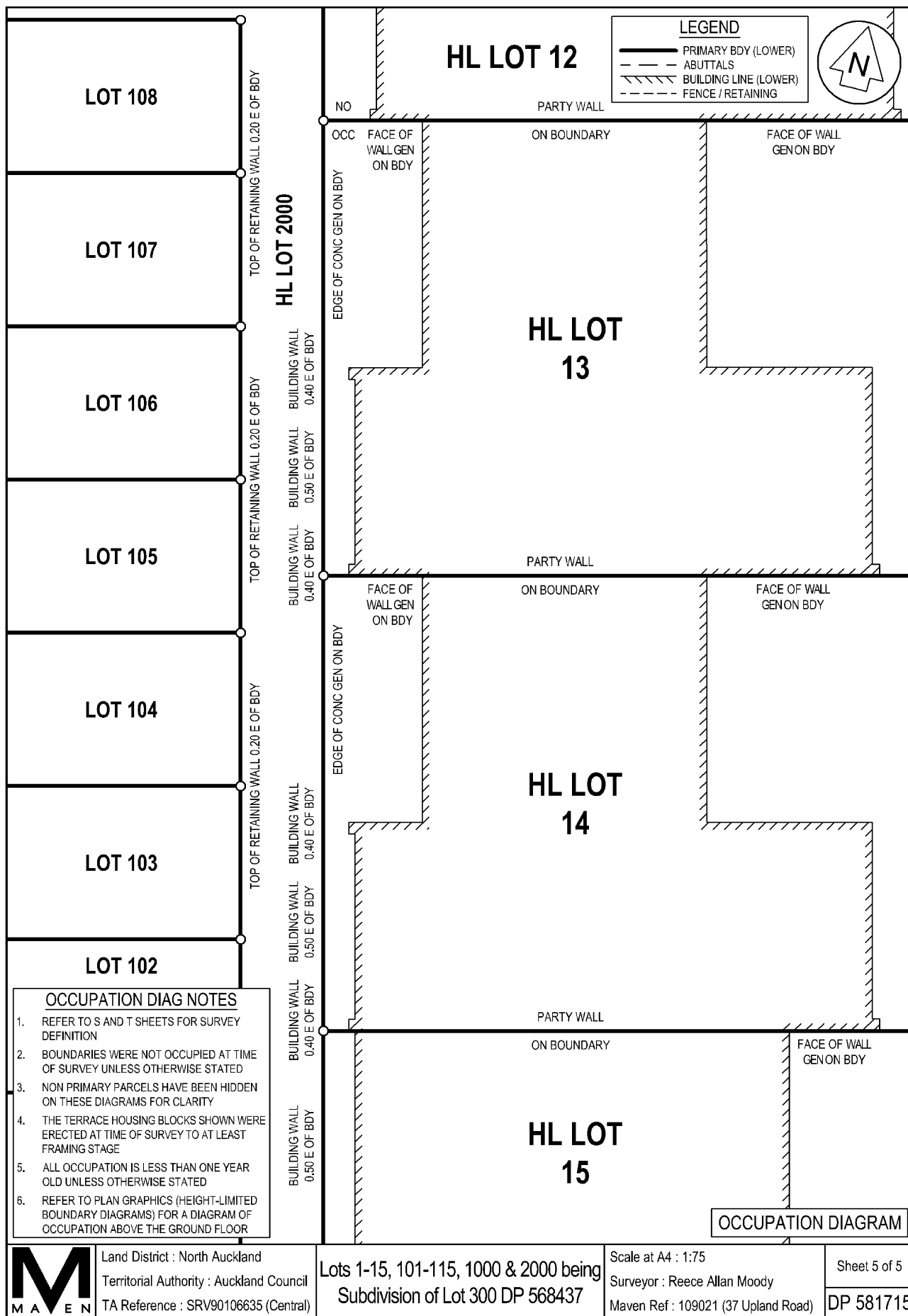
Land District : North Auckland
 Territorial Authority : Auckland Council
 TA Reference : SRV90106635 (Central)

Lots 1-15, 101-115, 1000 & 2000 being
 Subdivision of Lot 300 DP 568437

Scale at A4 : 1:75
 Surveyor : Reece Allan Moody
 Maven Ref : 109021 (37 Upland Road)

Sheet 4 of 5
 DP 581715

Occupation Diagram



Land District : North Auckland
 Territorial Authority : Auckland Council
 TA Reference : SRV90106635 (Central)

Lots 1-15, 101-115, 1000 & 2000 being
 Subdivision of Lot 300 DP 568437

Scale at A4 : 1:75
 Surveyor : Reece Allan Moody
 Maven Ref : 109021 (37 Upland Road)

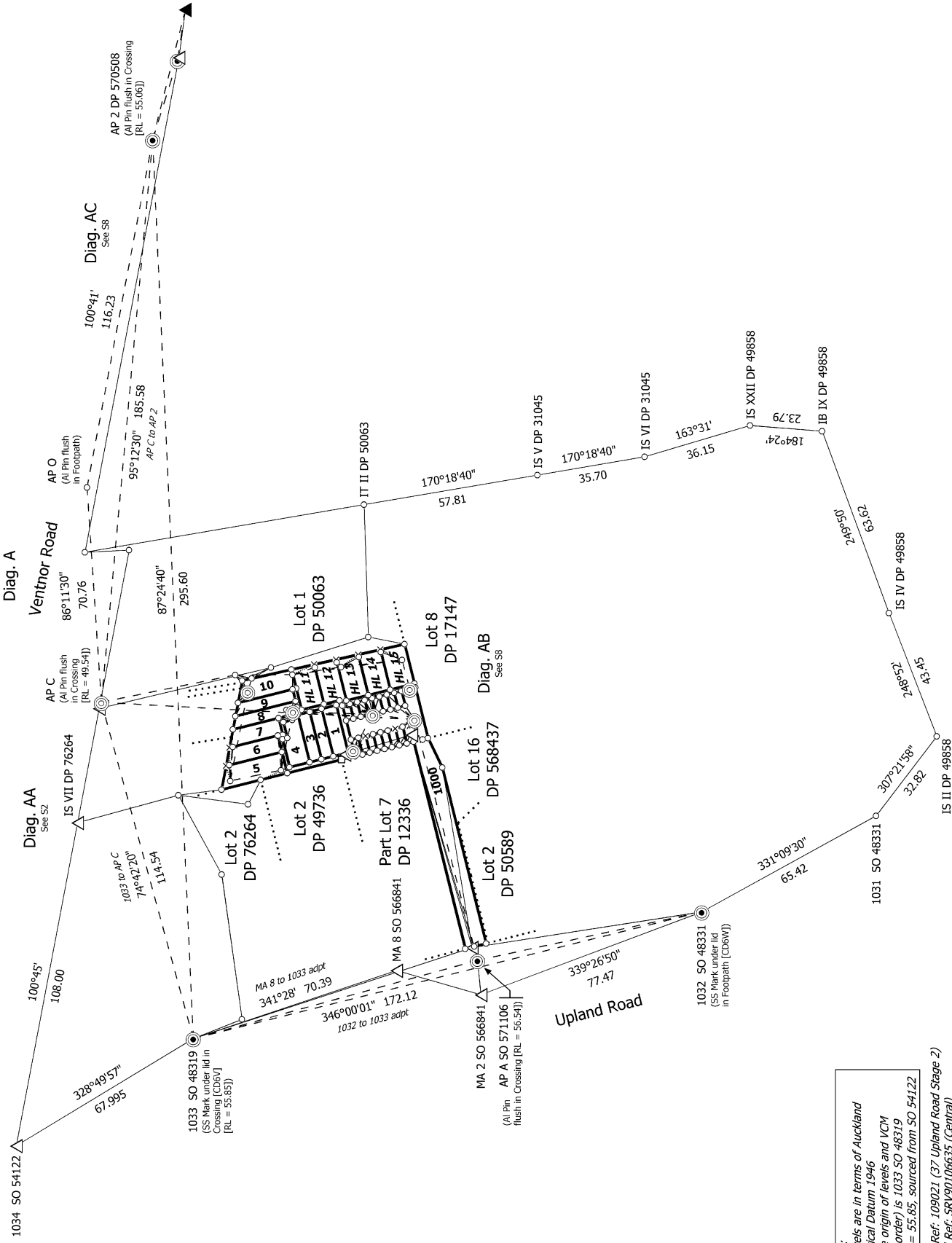
Sheet 5 of 5
 DP 581715



SCHEDULE OF REDUCED LEVELS			
MARK NAME	REDUCED LEVEL	CODE	DESCRIPTION
1033 SO 48319	55.85	[CD6V]	SS MARK UNDER LID IN CROSSING
AP 1 DP 570508	56.34	-	AL PIN FLUSH IN CROSSING
AP 2 DP 570508	55.06	-	AL PIN FLUSH IN CROSSING
AP A SO 571106	56.54	-	AL PIN FLUSH IN CROSSING
AP C	49.54	-	AL PIN FLUSH IN CROSSING
AP D	49.26	-	AL PIN FLUSH IN DRIVEWAY

NOTES

- ❖ REDUCED LEVELS HEREON ARE IN TERMS OF AUCKLAND VERTICAL DATUM 1946
- ❖ ORIGIN OF LEVELS / VCM (3V ORDER): 1033 SO 48319
- ❖ SOURCED FROM SO 54122



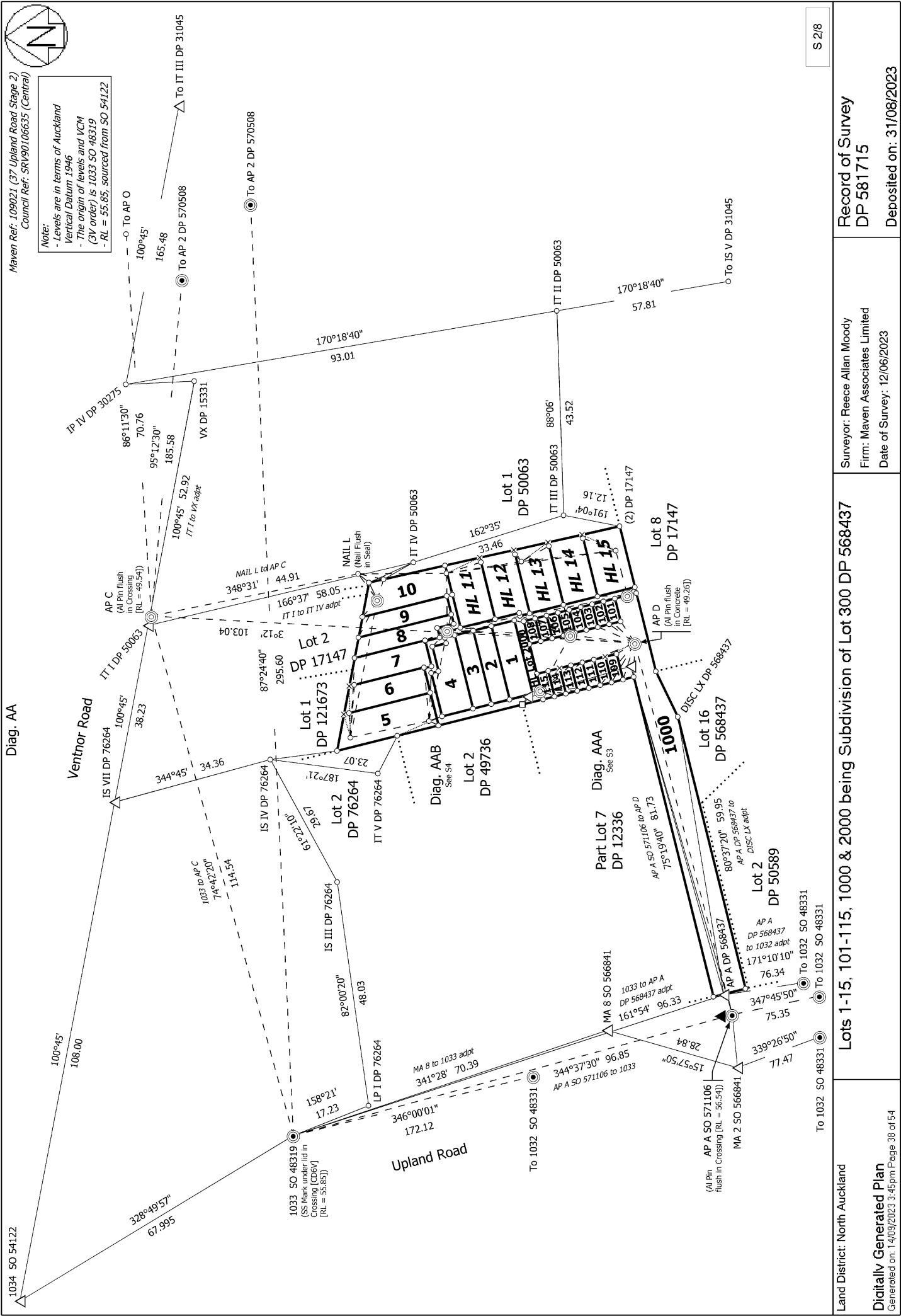
Note:
 - Levels are in terms of Auckland Vertical Datum 1946
 - The origin of levels and VCM (3V order) is 1033 SO 48319
 - RL = 55.85, sourced from SO 54122
 Maven Ref: 109021 (37 Upland Road Stage 2)
 Council Ref: SKV90106635 (Central)

S 1/8	Surveyor: Reece Allan Moody Firm: Maven Associates Limited Date of Survey: 12/06/2023	Record of Survey DP 581715 Deposited on: 31/08/2023
Lots 1-15, 101-115, 1000 & 2000 being Subdivision of Lot 300 DP 568437		
Land District: North Auckland	Digitally Generated Plan Generated on: 14/09/2023 3:45pm Page 37 of 54	



Maven Ref: 109021 (37 Upland Road Stage 2)
Council Ref: SRV90106635 (Central)

Note:
- Levels are in terms of Auckland
Vertical Datum 1946
- The origin of levels and VCM
(3V order) is 1033 SO 48319
- RL = 55.85, sourced from SO 54122



S 2/8

Record of Survey
DP 581715
Deposited on: 31/08/2023

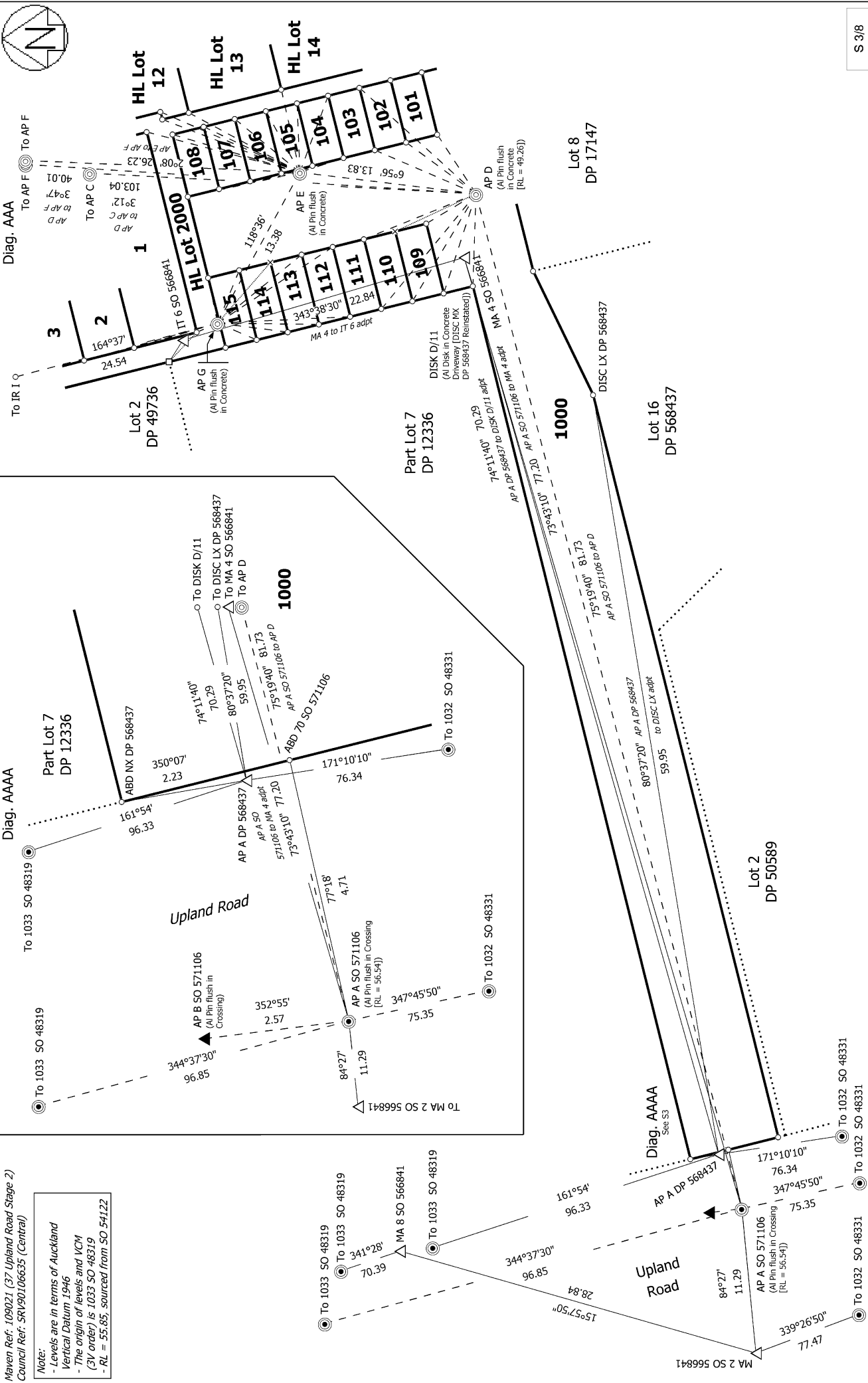
Surveyor: Reece Allan Moody
Firm: Maven Associates Limited
Date of Survey: 12/06/2023

Lots 1-15, 101-115, 1000 & 2000 being Subdivision of Lot 300 DP 568437

Land District: North Auckland
Digitally Generated Plan
Generated on: 14/09/2023 3:45pm Page 30 of 54

Maven Ref: 109021 (37 Upland Road Stage 2)
 Council Ref: SKY20106635 (Central)

Note:
 - Levels are in terms of Auckland
 Vertical Datum 1946
 - The origin of levels and VCM
 (3V order) is 1033 SO 48319
 - RL = 55.85, sourced from SO 54122

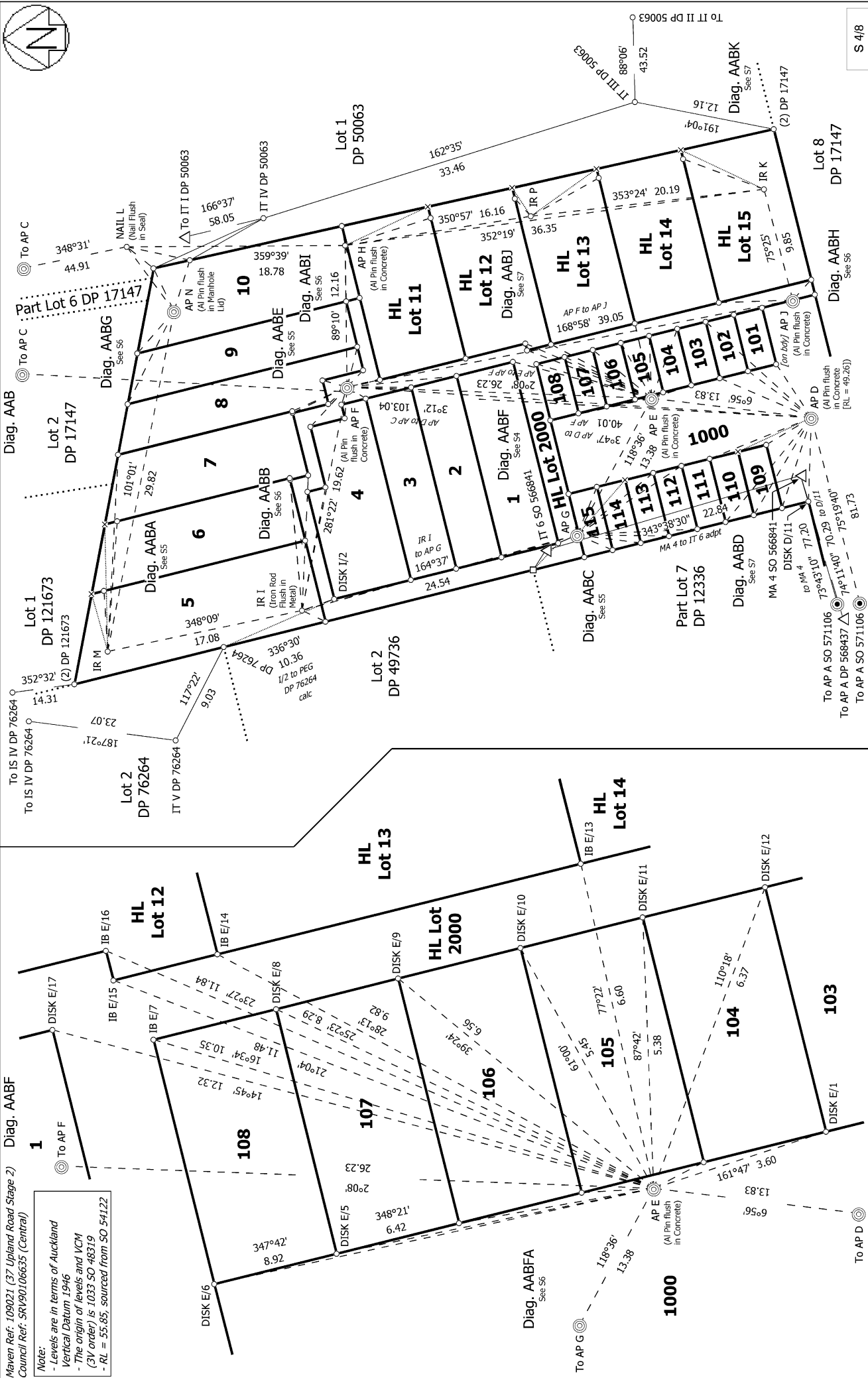


<p>Surveyor: Reece Allan Moody Firm: Maven Associates Limited Date of Survey: 12/06/2023</p>	<p>Record of Survey DP 581715</p>	<p>Deposited on: 31/08/2023</p>
<p>Lots 1-15, 101-115, 1000 & 2000 being Subdivision of Lot 300 DP 568437</p>		
<p>Land District: North Auckland</p>	<p>Digitally Generated Plan Generated on: 14/09/2023 3:45pm Page 39 of 54</p>	

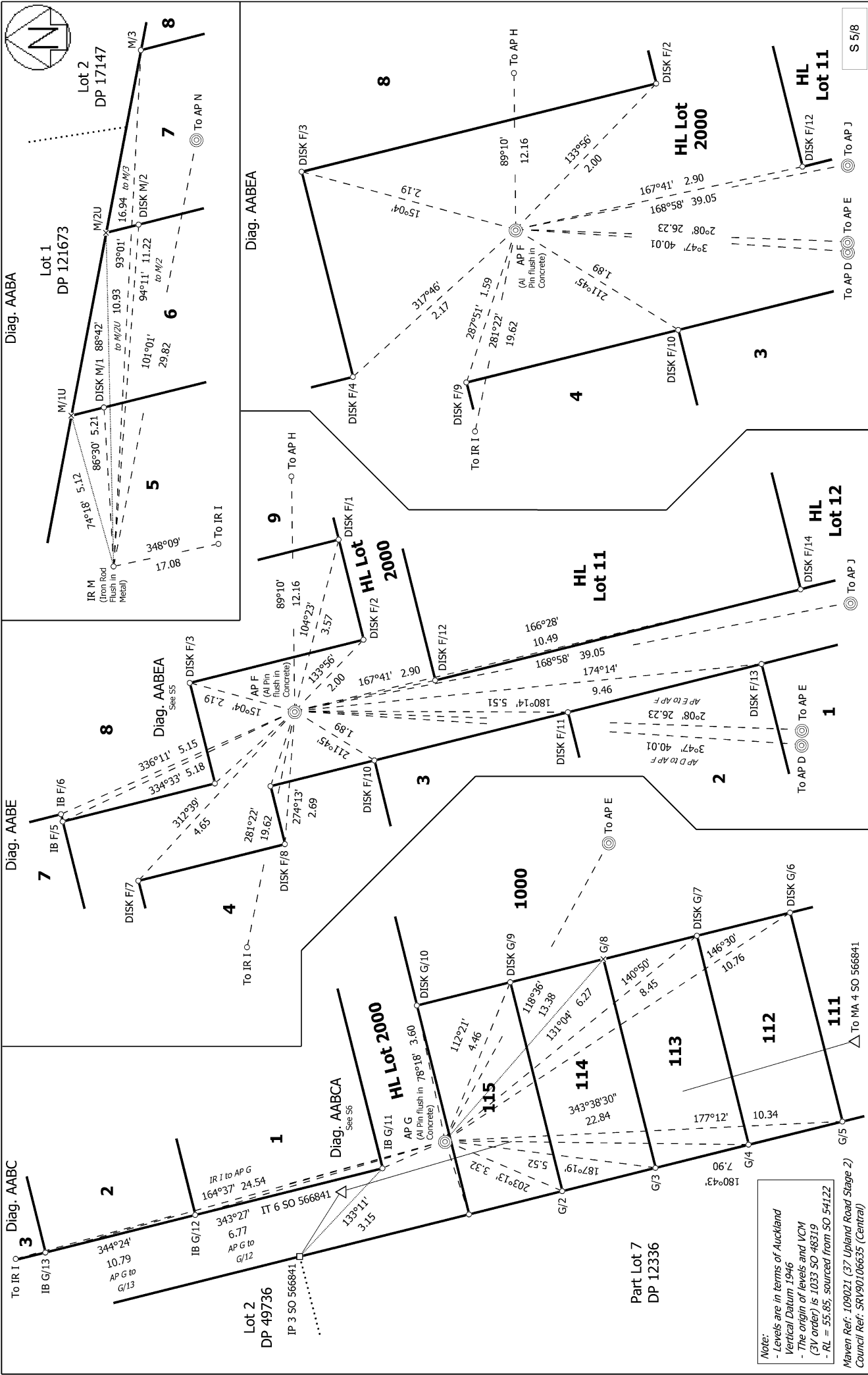


Maven Ref: 100021 (37 Upland Road Stage 2)
 Council Ref: SKRV90106635 (Central)

Note:
 - Levels are in terms of Auckland Vertical Datum 1946
 - The origin of levels and VCM (3V order) is 1033 SO 48319
 - RL = 55.85, sourced from SO 54122



<p>Land District: North Auckland</p> <p>Digitally Generated Plan <small>Generated on: 14/09/2023 3:45pm Page 40 of 54</small></p>	<p>Lots 1-15, 101-115, 1000 & 2000 being Subdivision of Lot 300 DP 568437</p>	<p>Surveyor: Reece Allan Moody Firm: Maven Associates Limited Date of Survey: 12/06/2023</p>	<p>Record of Survey DP 581715 Deposited on: 31/08/2023</p>
---	--	--	---



Note:
 - Levels are in terms of Auckland Vertical Datum 1946
 - The origin of levels and VCM (3Y order) is 1033 SO 48319
 - RL = 55.85, sourced from SO 54122
 Naven Ref: 109021 (37 Upland Road Stage 2)
 Council Ref: SKV90106635 (Central)

Land District: North Auckland	Lots 1-15, 101-115, 1000 & 2000 being Subdivision of Lot 300 DP 568437	Surveyor: Reece Allan Moody Firm: Maven Associates Limited Date of Survey: 12/06/2023	Record of Survey DP 581715 Deposited on: 31/08/2023
Part Lot 7 DP 12336		Digitally Generated Plan Generated on: 14/09/2023 3:45pm Page 41 of 54	



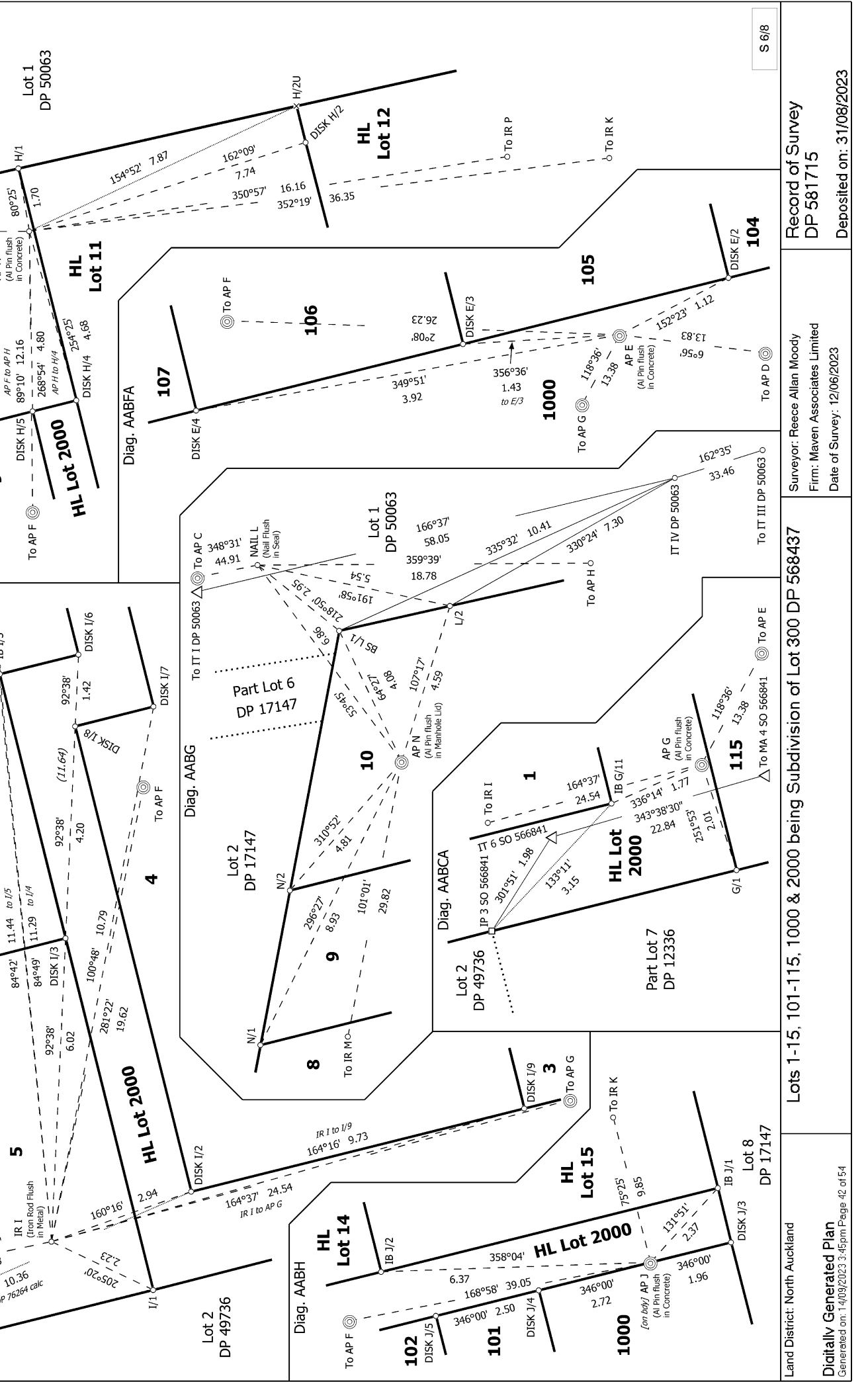
Maven Ref: 109021 (37 Upland Road Stage 2)
Council Ref: SRV90106635 (Central)

Diag. AABG

Notes:
- Levels are in terms of Auckland Vertical Datum 1946
- The origin of levels and VCM (3V order) is 1033 SO 48319
- RL = 55.85, sourced from SO 54122

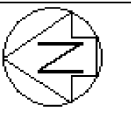
Diag. AABH

Diag. AABA

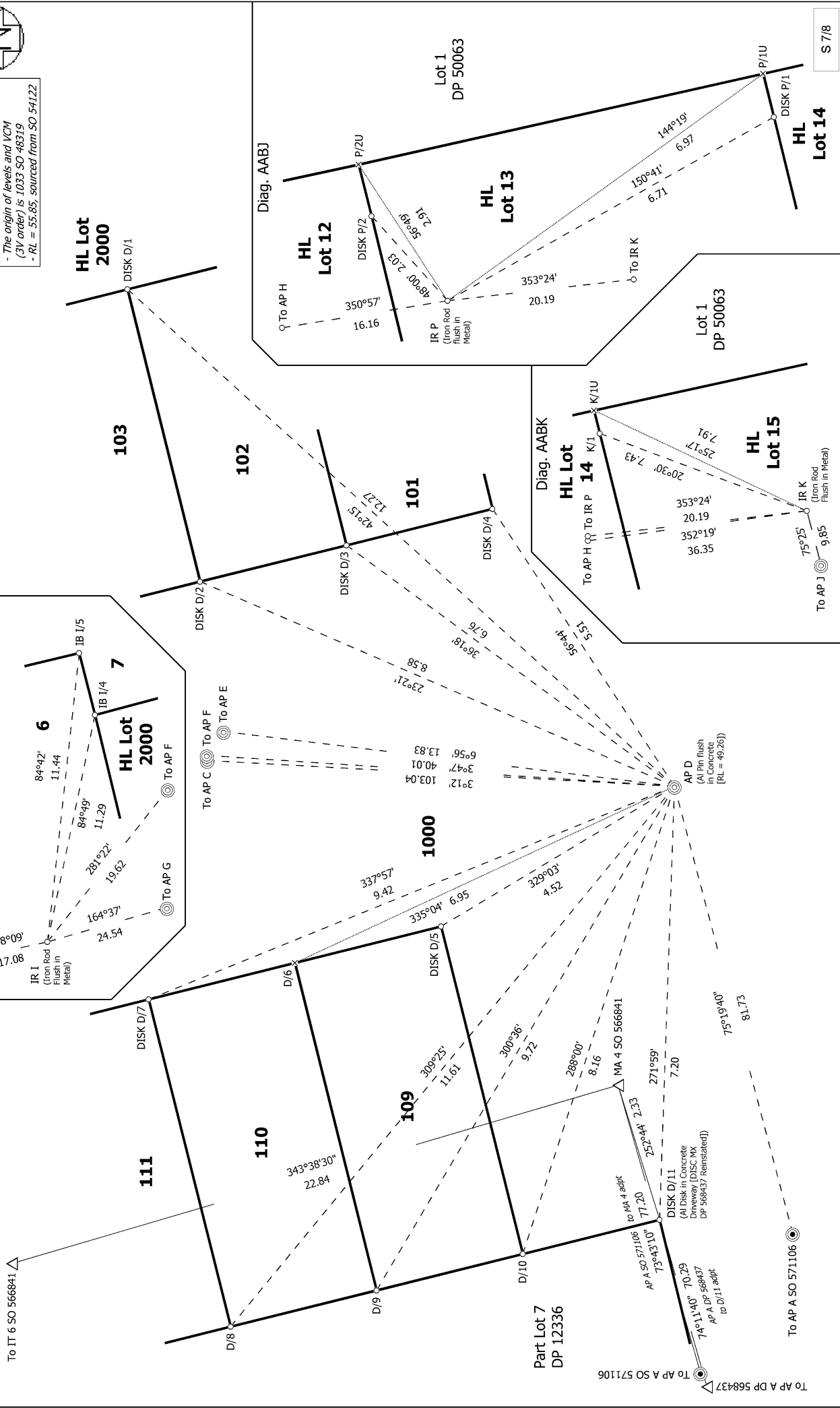


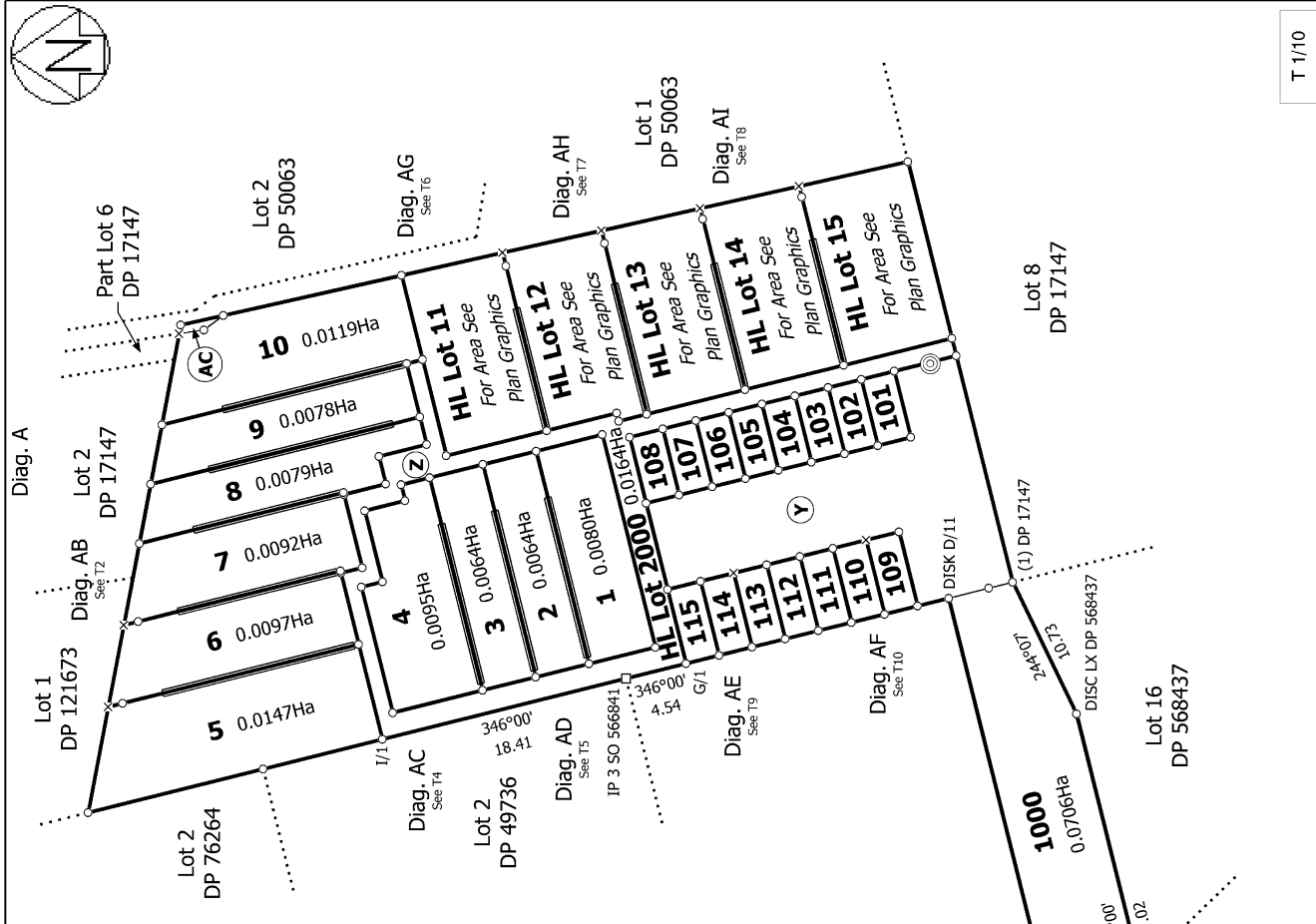
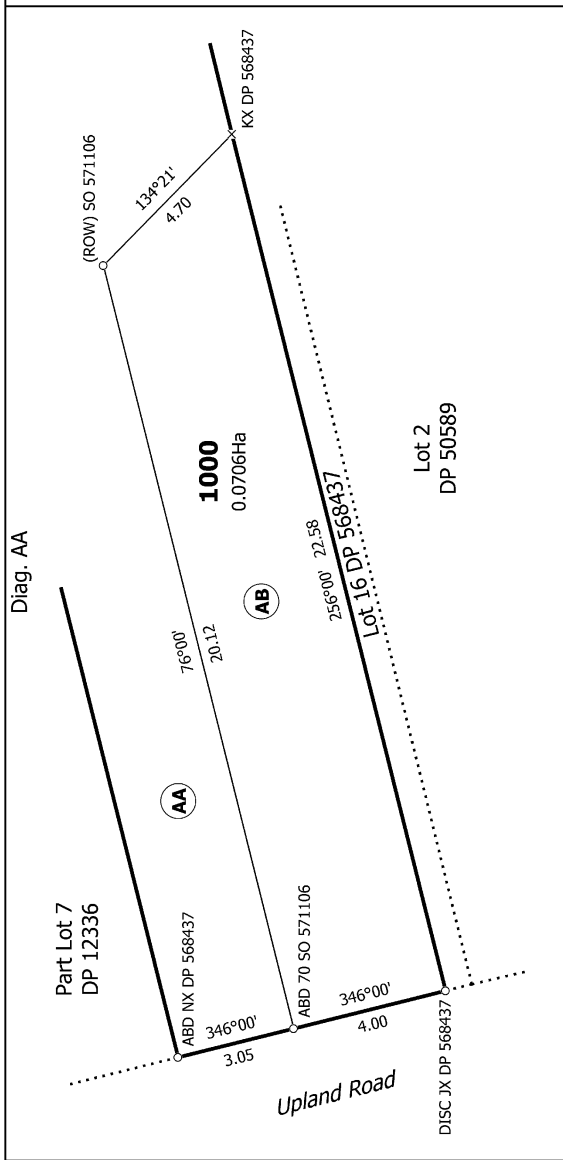
S 6/8

Land District: North Auckland	Surveyor: Reece Allan Moody Firm: Maven Associates Limited Date of Survey: 12/06/2023	Record of Survey DP 581715 Deposited on: 31/08/2023
Lots 1-15, 101-115, 1000 & 2000 being Subdivision of Lot 300 DP 568437		Digitally Generated Plan Generated on: 14/09/2023 3:45pm Page 42 of 54



Note:
 - Levels are in terms of Auckland
 Vertical Datum 1946
 - The origin of levels and VCM
 (3V order) is 1033 SO 48319
 - RL = 55.85, sourced from SO 54122





T 1/10

Naven Ref: 109021 (37 Upland Road Stage 2)
Council Ref: SK/20/106635 (Central)

Land District: North Auckland

Digitally Generated Plan

Generated on: 14/09/2023 3:45pm Page 45 of 54

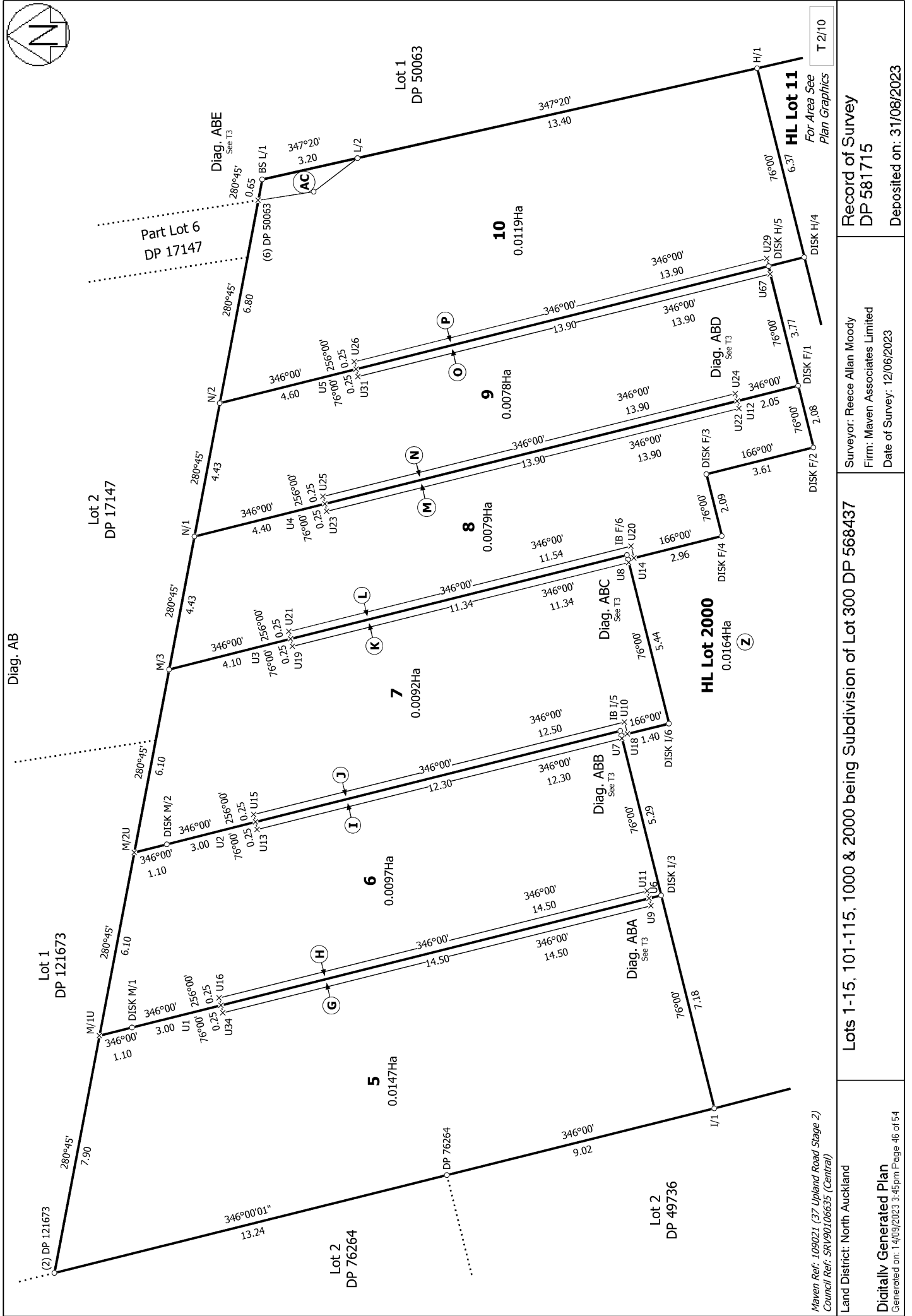
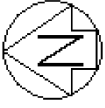
Lots 1-15, 101-115, 1000 & 2000 being Subdivision of Lot 300 DP 568437

Surveyor: Reece Allan Moody
Firm: Maven Associates Limited

Date of Survey: 12/06/2023

Record of Survey
DP 581715

Deposited on: 31/08/2023



Maven Ref: 109021 (37 Upland Road Stage 2)
 Council Ref: SKY90106635 (Central)

Land District: North Auckland

Digitally Generated Plan
 Generated on: 14/09/2023 3:45pm Page 46 of 54

Lots 1-15, 101-115, 1000 & 2000 being Subdivision of Lot 300 DP 568437

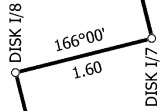
Surveyor: Reece Allan Moody
 Firm: Maven Associates Limited
 Date of Survey: 12/06/2023

Record of Survey
DP 581715
 Deposited on: 31/08/2023

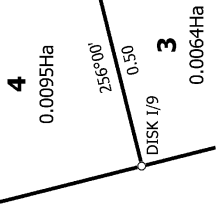
T 2/10
 For Area See
 Plan Graphics

Diag. AC

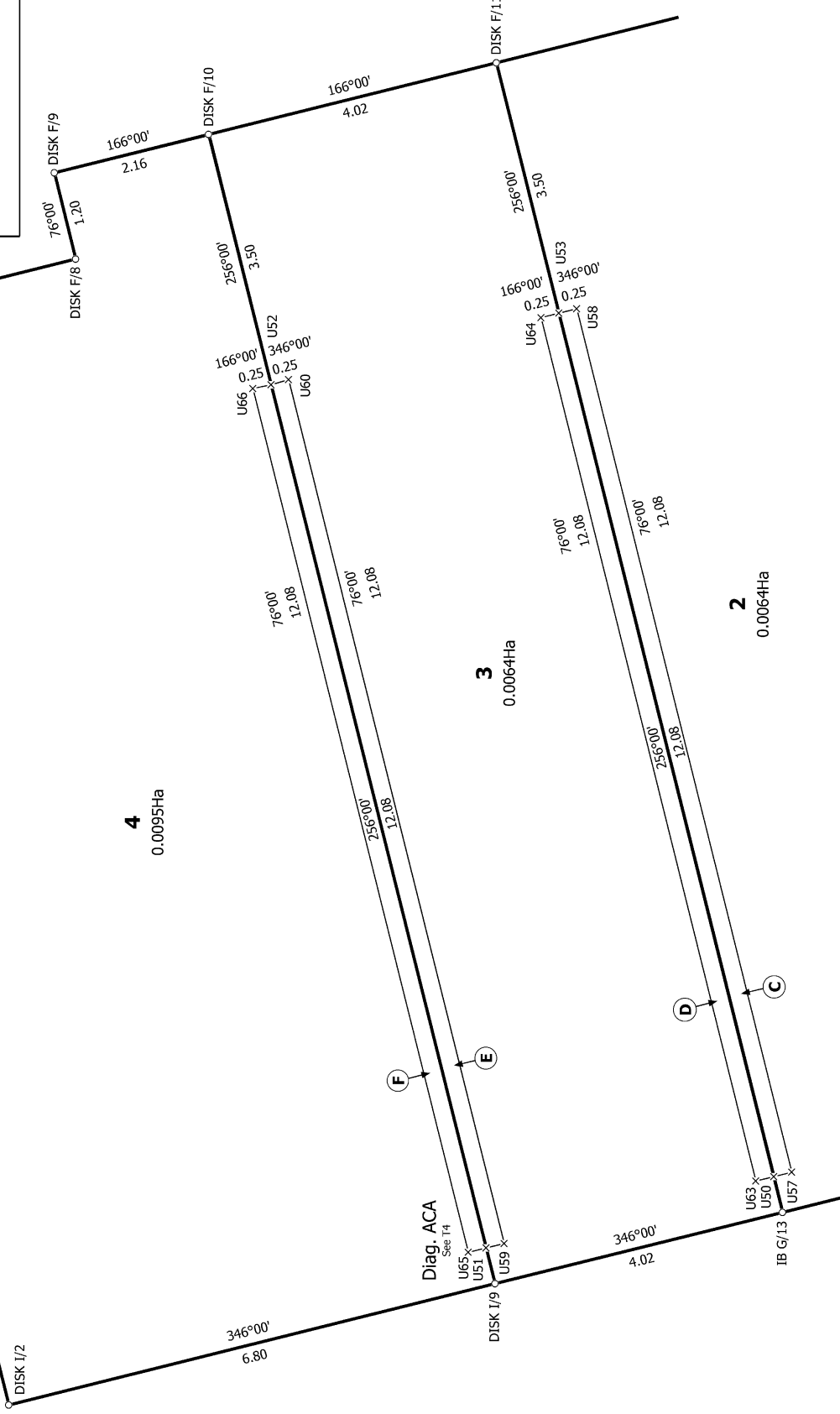
HL Lot 2000
 0.0164Ha



Diag. ACA

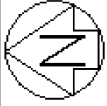


HL Lot 2000
 0.0164Ha



T 4/10

Diag. AD



3
0.0064Ha

2
0.0064Ha

1
0.0080Ha

HIL Lot 2000
0.0164Ha (Z)

Diag. ADA
See T5

Diag. ADB
See T5

Diag. ADA

HIL
Lot 2000
0.0164Ha (Z)

Diag. ADB

HIL
Lot 2000
0.0164Ha (Z)

T 5/10

Land District: North Auckland

Digitally Generated Plan

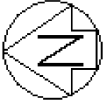
Generated on: 14/09/2023 3:45pm Page 49 of 54

Lots 1-15, 101-115, 1000 & 2000 being Subdivision of Lot 300 DP 568437

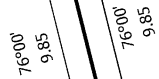
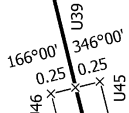
Surveyor: Reece Allan Moody
 Firm: Maven Associates Limited
 Date of Survey: 12/06/2023

Record of Survey
 DP 581715

Deposited on: 31/08/2023



HL Lot 12
 For Area See
 Plan Graphics



Lot 1
 DP 50063

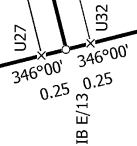
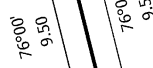


HL Lot 13
 For Area See
 Plan Graphics

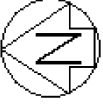


HL Lot 2000
 0.0164Ha
 (Z)

HL Lot 14
 For Area See
 Plan Graphics



T 7/10



Diag. AE

HL Lot 2000
0.0164Ha
(Z)

108
0.0012Ha

107
0.0012Ha

106
0.0012Ha

105
0.0012Ha

104
0.0012Ha

103
0.0012Ha

102
0.0012Ha

1000
0.0706Ha
(Y)

HL Lot 2000
0.0164Ha
(Z)

115
0.0014Ha

114
0.0014Ha

113
0.0014Ha

112
0.0014Ha

111
0.0014Ha

110
0.0014Ha

Part Lot 7
DP 12336

Naven Ref: 109021 (37 Upland Road Stage 2)
Council Ref: SKY90106635 (Central)

Land District: North Auckland

Digitally Generated Plan

Generated on: 14/09/2023 3:45pm Page 53 of 54

Lots 1-15, 101-115, 1000 & 2000 being Subdivision of Lot 300 DP 568437

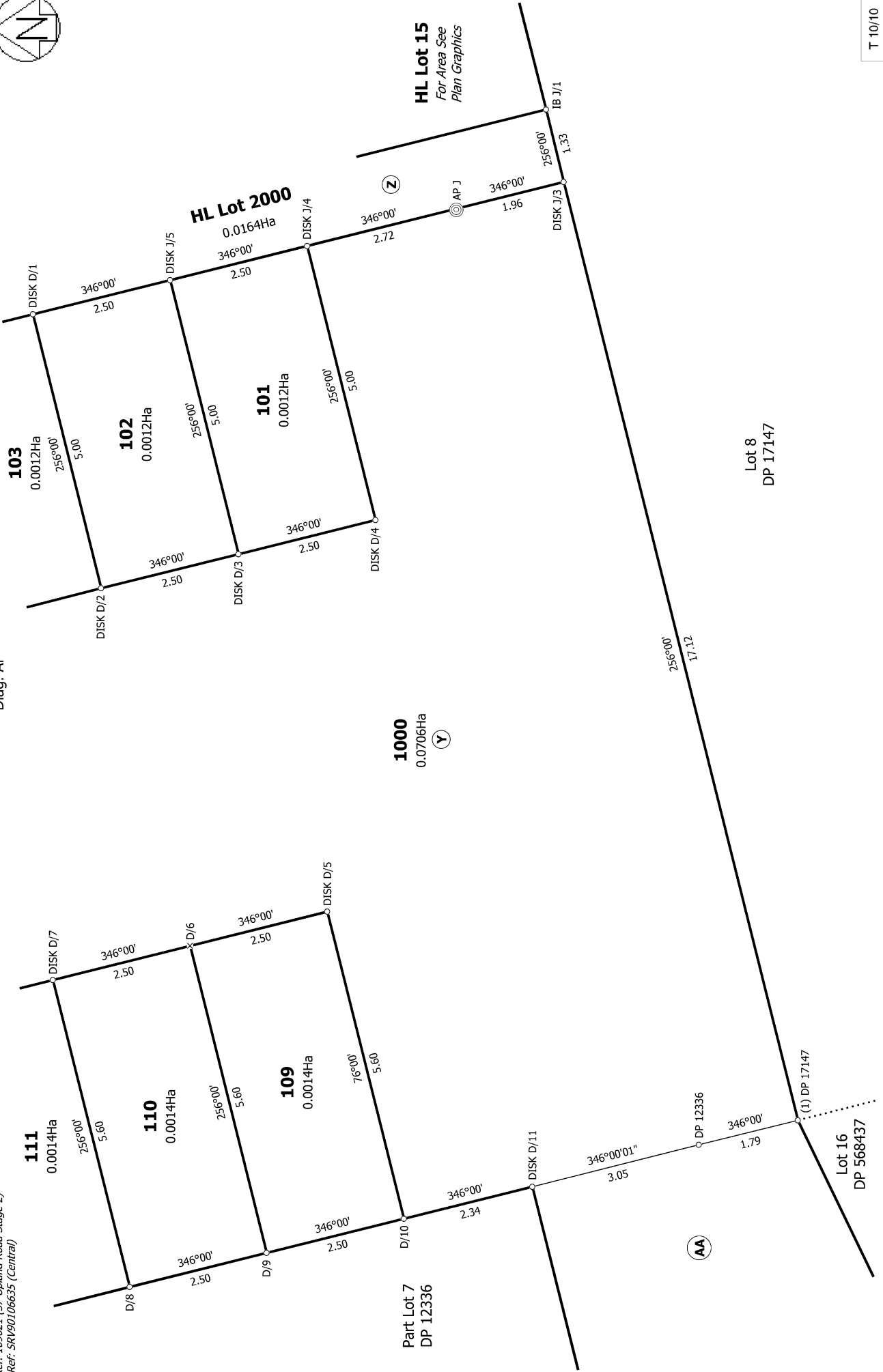
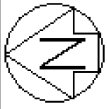
Surveyor: Reece Allan Moady
Firm: Maven Associates Limited
Date of Survey: 12/06/2023

**Record of Survey
DP 581715**

Deposited on: 31/08/2023

T 9/10

Diag. AF



T 10/10

Lots 1-15, 101-115, 1000 & 2000 being Subdivision of Lot 300 DP 568437

Surveyor: Reece Allan Moody
 Firm: Maven Associates Limited
 Date of Survey: 12/06/2023

Record of Survey
 DP 581715
 Deposited on: 31/08/2023