

Record of Survey - DP 577646

Survey Number DP 577646
Surveyor Reference 20-882 Monrad St
Surveyor Brian Patrick Curtis
Survey Firm Geoworks Limited
Surveyor Declaration I Brian Patrick Curtis, being a licensed cadastral surveyor, certify that--
 (a) this dataset provided by me and its related survey are accurate, correct and in accordance with the Cadastral Survey Act 2002 and Cadastral Survey Rules 2021; and
 (b) the survey was undertaken by me or under my personal direction.
 Declared on 27 Mar 2023 04:39 PM

Survey Details

Dataset Description	Lots 1 & 2 Being a Subdivision of Lot 2 DP 30597		
Purpose	LT Subdivision		
Status	Deposited	Type	Survey
Land District	Wellington	Survey Class	Class A
Meridional Circuit	Wanganui 2000	Vertical Datum	New Zealand Vertical Datum 2016

Survey Dates

Surveyed Date	24/05/2022	Certified Date	27/03/2023
Submitted Date	27/03/2023 16:39:43	Survey Approval Date	28/03/2023
Deposit Date	18/08/2023		

Referenced Surveys

Survey Number	Land District	Bearing Correction
DP 30597	Wellington	-0°00'35"

Territorial Authorities

Palmerston North City

Comprised In

RT WN7C/591

Created Parcels

Parcels	Parcel Intent	Area	RT Reference
Height-Limited Lot 1 Deposited Plan 577646	Fee Simple Title	0.0364 Ha	1066409
Height-Limited Lot 2 Deposited Plan 577646	Fee Simple Title	0.0371 Ha	1066410
Area A Deposited Plan 577646	Easement		
Height-Limited Area B Deposited Plan 577646	Easement		
Total Area		<u>0.0735 Ha</u>	

Mark and Vector

Survey Number DP 577646

Meridional Circuit Wanganui 2000

From	To	Code	Bearing	Adpt Surv	Bearing Correction	Distance	Adpt Surv	Class
IT XXII DP 26239	IR I DP 30444	ob0	150°14'00" M			125.97 M		
IR I DP 30444	IS I DP 30597	ob1	150°14'00" M			10.72 M		
IS I DP 30597	IS II DP 30597	ob5	150°14'00" M			13.04 M		
IS II DP 30597	IT 1 DP 479806	ob13	150°14'00" M			12.55 M		
IT 1 DP 479806	IT 2 DP 479806	ob2	150°14'00" M			5.66 M		
IT 2 DP 479806	IR 1 DP 577646	ob3	150°14'00" M			1.66 M		
IR 1 DP 577646	IS IV DP 43237	ob31	150°14'00" M			4.52 M		
IS IV DP 43237	IT I DP 35193	ob4	150°14'00" M			134.89 M		
IS II DP 30597	IT DP 30597	ob14	228°50'05" A	DP 30597	-0°00'35"	47.28 A	DP 30597	
IT DP 30597	IT IV DP 30597	ob16	228°50'05" A	DP 30597	-0°00'35"	42.88 A	DP 30597	
IT IV DP 30597	IT III DP 30597	ob17	350°56'55" A	DP 30597	-0°00'35"	33.48 A	DP 30597	
IT III DP 30597	IS I DP 30597	ob18	60°34'25" A	DP 30597	-0°00'35"	76.56 A	DP 30597	
IS II DP 30597	ABD 2 DP 577646	ob15	206°48'25" A	DP 30597	-0°00'35"	7.33 A	DP 30597	
ABD 2 DP 577646	ABD 3 DP 577646	ob19	150°14'00" A	DP 30597	-0°00'35"	3.00 C		Class A
ABD 3 DP 577646	MARK DP 30597	ob25	150°14'00" A	DP 30597	-0°00'35"	15.29 C		Class A
MARK DP 30597	IS II DP 30597	ob23	345°33'25" A	DP 30597	-0°00'35"	23.15 A	DP 30597	
MARK DP 30597	ABD 4 DP 577646	ob24	240°14'00" A	DP 30597	-0°00'35"	24.63 C		Class A
ABD 4 DP 577646	PEG (2) DP 30597	ob27	240°14'00" A	DP 30597	-0°00'35"	15.60 C		Class A
PEG (2) DP 30597	IT DP 30597	ob22	330°14'00" A	DP 30597	-0°00'35"	12.98 A	DP 30597	Class A
ABD 2 DP 577646	UNMK 10 DP 577646	ob20	240°14'00" A	DP 30597	-0°00'35"	10.89 C		Class A
UNMK 10 DP 577646	UNMK 11 DP 577646	ob37	240°14'00" A	DP 30597	-0°00'35"	6.43 C		Class A
UNMK 11 DP 577646	PEG (1) DP 30597	ob38	240°14'00" A	DP 30597	-0°00'35"	22.91 C		Class A
PEG (1) DP 30597	IT DP 30597	ob21	150°14'00" A	DP 30597	-0°00'35"	5.31 A	DP 30597	Class A
ABD 3 DP 577646	ABD 5 DP 577646	ob26	240°14'00" C			10.89 C		Class A
ABD 5 DP 577646	ABD 6 DP 577646	ob33	242°09'00" C			3.89 C		Class A
ABD 6 DP 577646	ABD 7 DP 577646	ob28	237°05'00" C			2.55 C		Class A
ABD 7 DP 577646	ABD 8 DP 577646	ob35	215°14'00" C			7.05 C		Class A
ABD 8 DP 577646	ABD 9 DP 577646	ob29	183°06'00" C			1.75 C		Class A

Mark and Vector

Survey Number DP 577646

Meridional Circuit Wanganui 2000

From	To	Code	Bearing	Adpt Surv	Bearing Correction	Distance	Adpt Surv	Class
ABD 9 DP 577646	ABD 4 DP 577646	ob30	150°03'00" C			10.83 C		Class A
ABD 5 DP 577646	UNMK 10 DP 577646	ob34	330°14'00" C			3.00 C		Class A
ABD 7 DP 577646	UNMK 11 DP 577646	ob36	330°14'00" C			3.01 C		Class A
IS I DP 30597	ABD 2 DP 577646	ob6	169°57'00" M			18.14 M		
IS I DP 30597	ABD 3 DP 577646	ob7	167°11'00" M			20.99 M		
IS I DP 30597	ABD 5 DP 577646	ob8	190°30'00" M			26.31 M		
IS I DP 30597	ABD 6 DP 577646	ob9	196°34'00" M			28.89 M		
IS I DP 30597	ABD 7 DP 577646	ob10	199°39'00" M			30.87 M		
IS I DP 30597	ABD 8 DP 577646	ob11	202°31'00" M			37.71 M		
IS I DP 30597	ABD 9 DP 577646	ob12	201°41'00" M			39.37 M		
IR 1 DP 577646	ABD 4 DP 577646	ob32	235°40'00" M			30.85 M		

Mark Name	Mark Condition	Description
ABD 2 DP 577646		in concrete
ABD 3 DP 577646		in concrete
ABD 4 DP 577646		on top rail
ABD 5 DP 577646		in concrete
ABD 6 DP 577646		in concrete
ABD 7 DP 577646		in concrete
ABD 8 DP 577646		in concrete
ABD 9 DP 577646		in concrete
IR 1 DP 577646		flush
IR I DP 30444		d0.05 in seal
IS I DP 30597		d0.05 in seal
IS II DP 30597		d0.05 in seal
IS IV DP 43237		d0.05 in seal
IT 1 DP 479806		d0.05 in seal
IT 2 DP 479806		d0.05 in seal
IT I DP 35193		d0.05 in seal



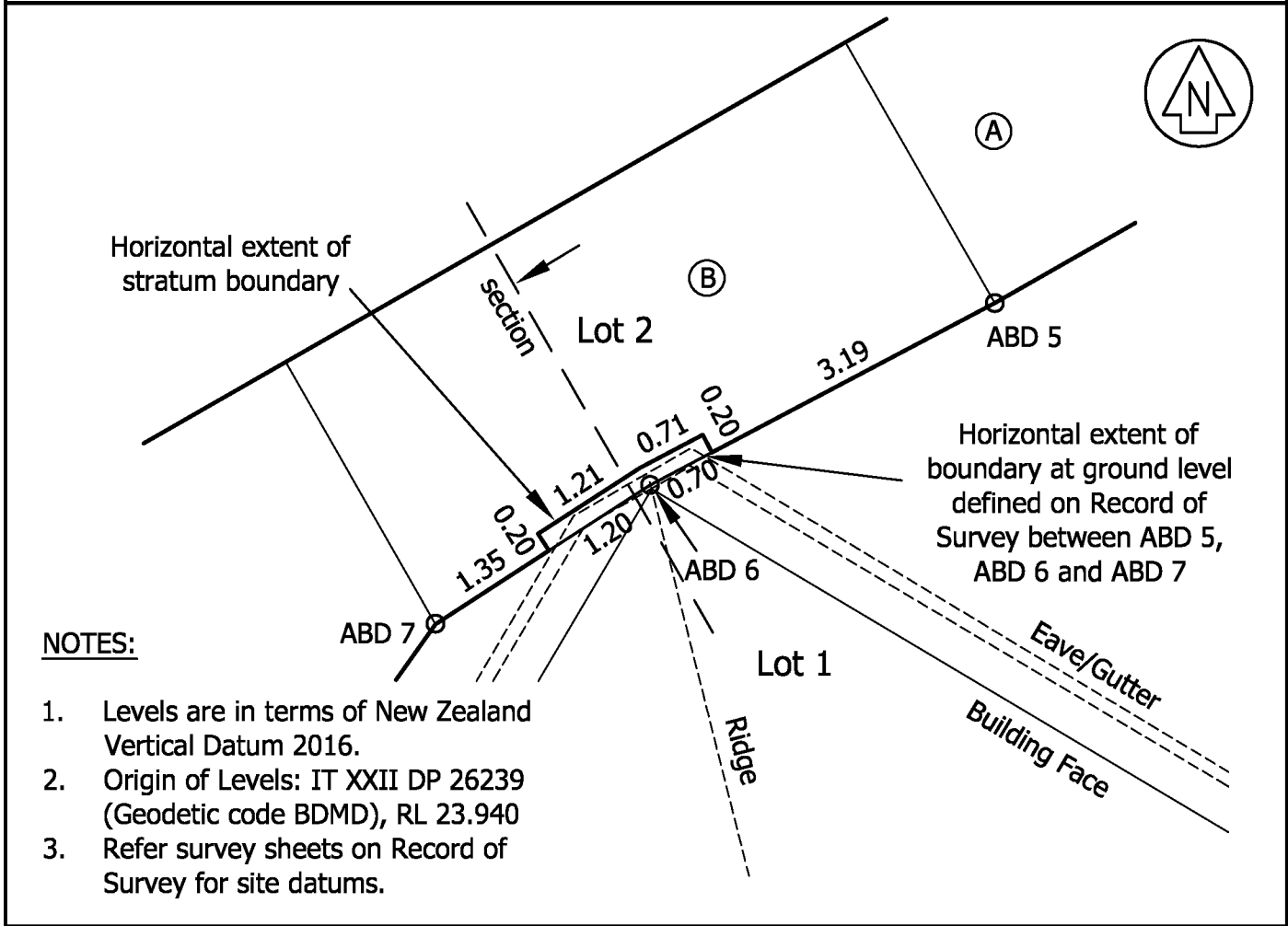
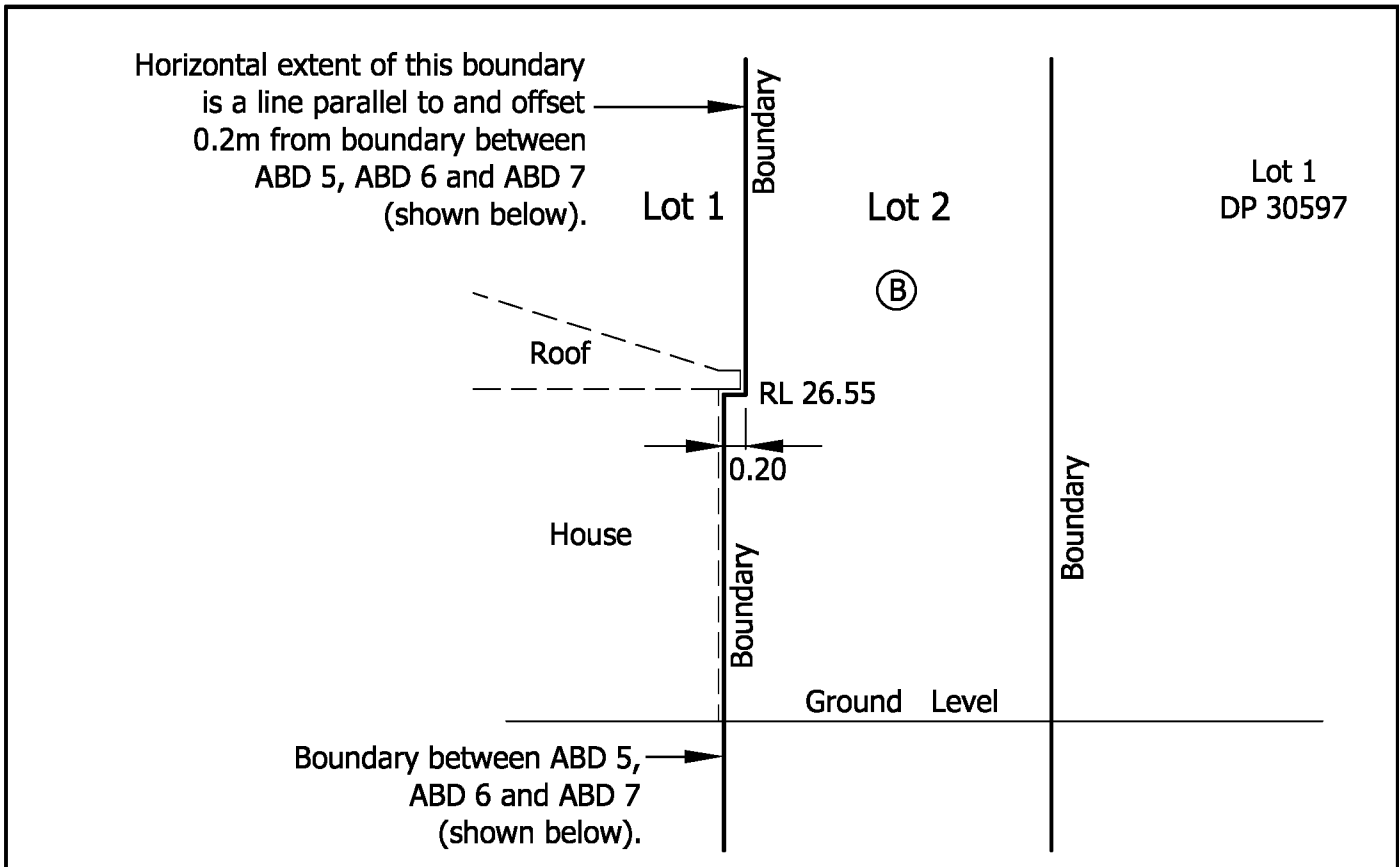
Mark and Vector

Survey Number DP 577646

Meridional Circuit Wanganui 2000

Mark Name	Mark Condition	Description
IT XXII DP 26239		Stainless steel pin set in concrete block under cast iron cover in seal at centre of intersection of Pembroke Street and Monrad Street.

*** End of Report ***



NOTES:

1. Levels are in terms of New Zealand Vertical Datum 2016.
2. Origin of Levels: IT XXII DP 26239 (Geodetic code BDMD), RL 23.940
3. Refer survey sheets on Record of Survey for site datums.

DP 577646

Land District: Wellington

Territorial Authority: Palmerston North City Council



MEMORANDUM OF EASEMENTS			
Purpose	Shown	Servient Tenement (Burdened Land)	Dominant Tenement (Benefited Land)
Right of Way.	A	Lot 2 hereon	Lot 1 hereon
Right to Drain Water.	A B	Lot 2 hereon	Lot 1 hereon

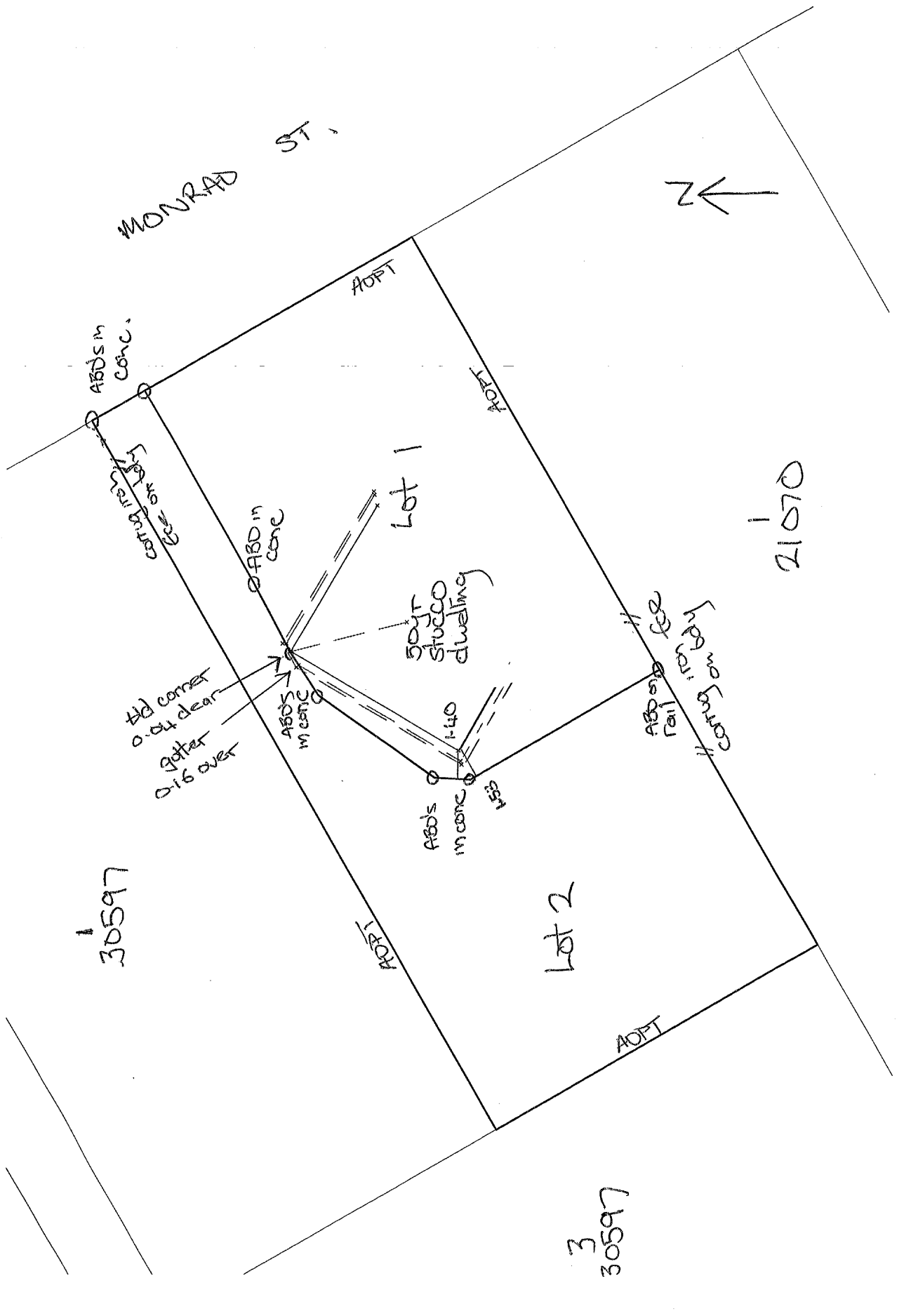
SCHEDULE OF EASEMENTS			
Purpose	Shown	Servient Tenement (Burdened Land)	Dominant Tenement (Benefited Land)
Pedestrian Right of Way. Maintenance.	B	Lot 2 hereon	Lot 1 hereon

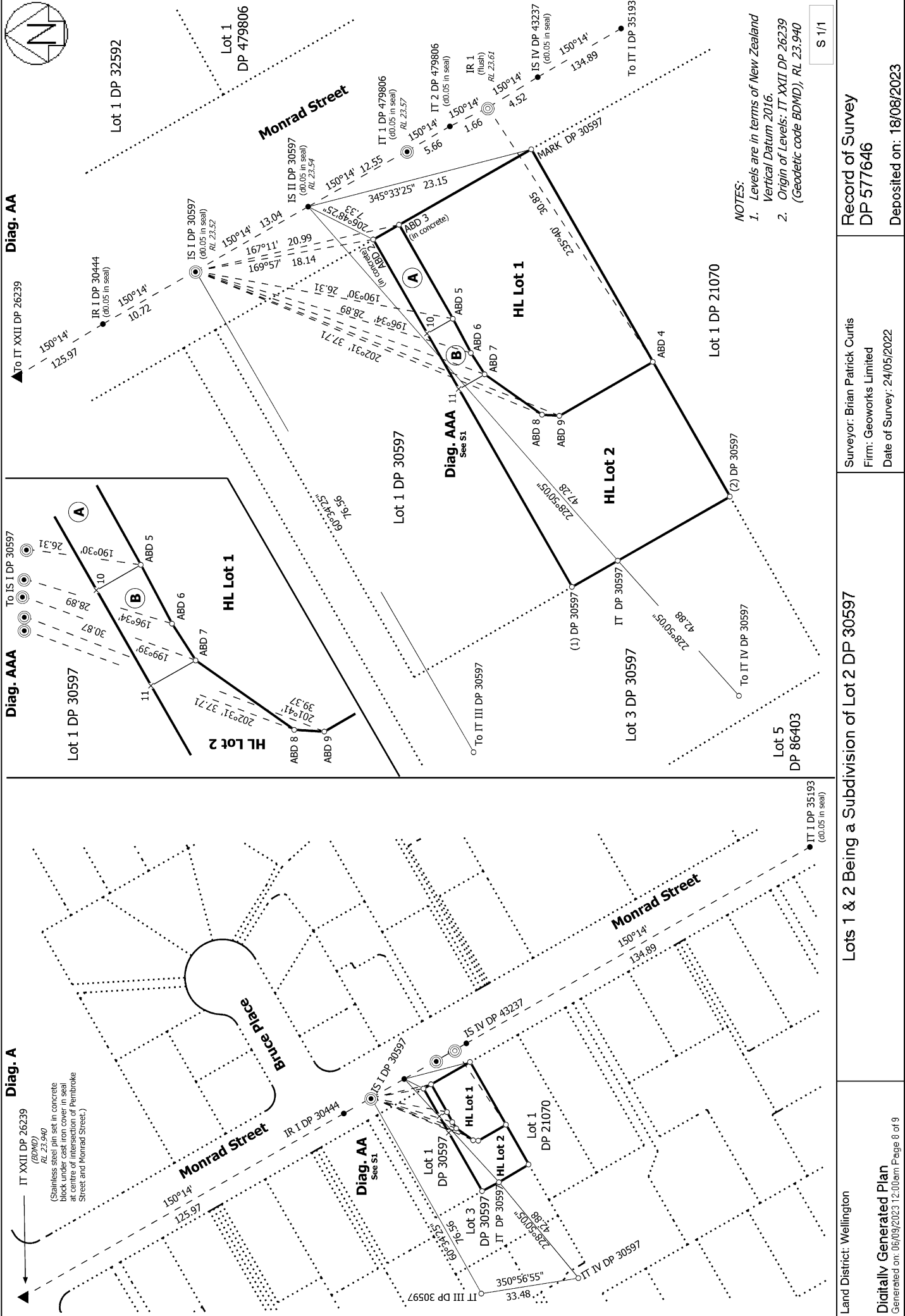
Lots 1 & 2 are subject to a Consent Notice.



PO BOX 490 | 28 DENBIGH SQUARE | FEILDING 4740
06 324 03 09 | ADMIN@GEOWORKS.CO.NZ | WWW.GEOWORKS.CO.NZ

Occupation Diagram





- NOTES:
- Levels are in terms of New Zealand Vertical Datum 2016.
 - Origin of Levels: IT XXII DP 26239 (Geodetic code BDMD), RL 23,940

S 1/1

<p>Land District: Wellington</p>	<p>Surveyor: Brian Patrick Curtis Firm: Geoworks Limited Date of Survey: 24/05/2022</p>	<p>Record of Survey DP 577646</p>
<p>Diag. AAA To IS I DP 30597 To IR I DP 30444 To IT XXII DP 26239</p>		<p>Record of Survey DP 577646</p>
<p>Diag. AA To IT III DP 30597 To IT IV DP 30597 To IT I DP 35193</p>		<p>Record of Survey DP 577646</p>
<p>Diag. A (Stainless steel pin set in concrete block under cast iron cover in seal at centre of intersection of Pembroke Street and Monrad Street.)</p>		<p>Record of Survey DP 577646</p>
<p>Diag. AAA To IS I DP 30597 To IR I DP 30444 To IT XXII DP 26239</p>		<p>Record of Survey DP 577646</p>
<p>Diag. AA To IT III DP 30597 To IT IV DP 30597 To IT I DP 35193</p>		<p>Record of Survey DP 577646</p>
<p>Diag. A (Stainless steel pin set in concrete block under cast iron cover in seal at centre of intersection of Pembroke Street and Monrad Street.)</p>		<p>Record of Survey DP 577646</p>



Diag. A

Lot 1 DP 30597

HL Lot 1
0.0364Ha

HL Lot 2
0.0371Ha

Lot 3 DP 30597

Lot 1 DP 21070

Lots 1 & 2 hereon are subject to a Consent Notice.

Land District: Wellington

Digitally Generated Plan

Generated on: 06/09/2023 12:00pm | Page 9 of 9

Surveyor: Brian Patrick Curtis
Firm: Geoworks Limited
Date of Survey: 24/05/2022

Record of Survey
DP 577646

Deposited on: 18/08/2023

T 1/1

NOTES:

1. Levels are in terms of New Zealand Vertical Datum 2016.
2. Origin of Levels: IT XXII DP 26239 (Geodetic code BDMD), RL 23.940
3. Refer survey sheet on Record of Survey for site datums.

Refer supplementary plan for depiction of strata boundary, between Lots 1 & 2.

