



# Record of Survey - DP 579230

---

**Survey Number** DP 579230  
**Surveyor Reference** 510585 - 191 Struie Rd - Scarlett  
**Surveyor** Darren James Hocken  
**Survey Firm** Eliot Sinclair & Partners Ltd  
**Surveyor Declaration** I Darren James Hocken, being a licensed cadastral surveyor, certify that--  
(a) this dataset provided by me and its related survey are accurate, correct and in accordance with the Cadastral Survey Act 2002 and Cadastral Survey Rules 2021; and  
(b) the survey was undertaken by me or under my personal direction.  
Declared on 06 Dec 2022 09:27 AM

---

## Survey Details

**Dataset Description** Easements Over Lot 4 DP 344232 & Lot 3 DP 60572  
**Purpose** Easement  
**Status** Deposited **Type** Survey  
**Land District** Canterbury **Survey Class** Class B  
**Meridional Circuit** Mount Pleasant 2000 **Vertical Datum** None

---

## Survey Dates

**Surveyed Date** 23/06/2022 **Certified Date** 06/12/2022  
**Submitted Date** 06/12/2022 09:27:53 **Survey Approval Date** 08/12/2022  
**Deposit Date** 25/07/2023

---

## Referenced Surveys

Survey Number	Land District	Bearing Correction
DP 60572	Canterbury	0°00'00"
DP 344232	Canterbury	0°00'00"
DP 537949	Canterbury	0°00'00"

---

## Territorial Authorities

Selwyn District

---

## Comprised In

RT 712254  
RT 181770

---

## Created Parcels

Parcels	Parcel Intent	Area	RT Reference
Area A Deposited Plan 579230	Easement		
Area B Deposited Plan 579230	Easement		
<b>Total Area</b>		0.0000 Ha	

# Mark and Vector

Survey Number DP 579230

Meridional Circuit Mount Pleasant 2000

From	To	Code	Bearing	Adpt Surv	Bearing Correction	Distance	Adpt Surv	Class
UNMK 58 DP 537949	UNMK 59 DP 537949	ob0	203°32'00"	A DP 537949	0°00'00"	7.38 A	DP 537949	Class B
UNMK 59 DP 537949	UNMK 3 DP 579230	ob1	151°50'40"	C		7.82 C		Class B
UNMK 3 DP 579230	UNMK 4 DP 579230	ob3	61°50'40"	C		9.24 C		Class D
UNMK 4 DP 579230	UNMK 57 DP 537949	ob4	331°50'40"	A DP 344232	0°00'00"	13.71 C		Class D
UNMK 57 DP 537949	UNMK 58 DP 537949	ob5	220°59'00"	A DP 537949	0°00'00"	3.69 A	DP 537949	Class D
UNMK 143 DP 537949	UNMK 144 DP 537949	ob6	216°23'00"	A DP 537949	0°00'00"	5.08 A	DP 537949	Class D
UNMK 144 DP 537949	UNMK 8 DP 579230	ob8	151°50'20"	A DP 60572	0°00'00"	6.64 C		Class D
UNMK 8 DP 579230	UNMK 9 DP 579230	ob9	36°27'00"	C		8.95 C		Class D
UNMK 9 DP 579230	UNMK 10 DP 579230	ob10	16°59'00"	C		10.74 C		Class B
UNMK 10 DP 579230	UNMK 11 DP 579230	ob11	1°04'00"	C		11.24 C		Class B
UNMK 11 DP 579230	UNMK 12 DP 579230	ob12	345°17'00"	C		9.72 C		Class B
UNMK 12 DP 579230	UNMK 13 DP 579230	ob13	332°00'00"	C		73.55 C		Class B
UNMK 13 DP 579230	UNMK 14 DP 579230	ob14	252°30'00"	C		8.80 C		Class B
UNMK 14 DP 579230	UNMK 162 DP 537949	ob15	166°27'00"	A DP 537949	0°00'00"	6.01 C		Class B
UNMK 162 DP 537949	UNMK 16 DP 579230	ob17	72°30'00"	C		4.23 C		Class B
UNMK 16 DP 579230	UNMK 165 DP 537949	ob18	152°00'00"	C		18.78 C		Class B
UNMK 165 DP 537949	UNMK 166 DP 537949	ob19	152°00'00"	A DP 537949	0°00'00"	1.83 A	DP 537949	Class B
UNMK 166 DP 537949	UNMK 169 DP 537949	ob25	152°00'00"	A DP 537949	0°00'00"	5.92 A	DP 537949	Class B
UNMK 169 DP 537949	UNMK 170 DP 537949	ob20	152°00'00"	A DP 537949	0°00'00"	14.46 A	DP 537949	Class B
UNMK 170 DP 537949	UNMK 171 DP 537949	ob21	154°29'00"	A DP 537949	0°00'00"	34.14 A	DP 537949	Class B
UNMK 171 DP 537949	UNMK 142 DP 537949	ob22	181°04'00"	A DP 537949	0°00'00"	10.40 A	DP 537949	Class B
UNMK 142 DP 537949	UNMK 143 DP 537949	ob23	196°59'00"	A DP 537949	0°00'00"	8.87 A	DP 537949	Class B
UNMK 14 DP 579230	UNMK 161 DP 537949	ob16	346°27'00"	A DP 537949	0°00'00"	6.19 C		
IT IV DP 60572	IT 2 DP 491504	ob26	152°20'34"	M		613.82 M		

# Mark and Vector

Survey Number DP 579230

Meridional Circuit Mount Pleasant 2000

From	To	Code	Bearing	Adpt Surv	Bearing Correction	Distance	Adpt Surv	Class
IT II DP 344232	IT IV DP 60572	ob32	331°50'20"	M		259.70 M		
IT 2 DP 491504	IT II DP 344232	ob30	332°42'45"	M		354.14 M		
IT IV DP 60572	UNMK 146 DP 537949	ob27	149°34'10"	A DP 537949	0°00'00"	269.98 A	DP 537949	
IT IV DP 60572	UNMK 138 DP 537949	ob28	144°04'30"	A DP 537949	0°00'00"	162.88 A	DP 537949	
IT IV DP 60572	UNMK 58 DP 537949	ob29	154°32'30"	A DP 537949	0°00'00"	287.08 A	DP 537949	
IT 2 DP 491504	UNMK 62 DP 537949	ob31	327°43'30"	A DP 537949	0°00'00"	233.75 A	DP 537949	
UNMK 59 DP 537949	UNMK 60 DP 537949	ob2	185°05'00"	A DP 537949	0°00'00"	4.33 A	DP 537949	
UNMK 61 DP 537949	UNMK 62 DP 537949	ob36	151°15'20"	A DP 537949	0°00'00"	81.22 A	DP 537949	
UNMK 60 DP 537949	UNMK 61 DP 537949	ob35	167°56'00"	A DP 537949	0°00'00"	4.66 A	DP 537949	
UNMK 146 DP 537949	UNMK 143 DP 537949	ob34	116°41'00"	A DP 537949	0°00'00"	6.70 A	DP 537949	
UNMK 143 DP 537949	UNMK 9 DP 579230	ob7	116°41'00"	C		6.09 C		
UNMK 161 DP 537949	UNMK 160 DP 537949	ob24	339°52'00"	A DP 537949	0°00'00"	10.01 A	DP 537949	
UNMK 160 DP 537949	UNMK 138 DP 537949	ob33	250°47'15"	A DP 537949	0°00'00"	6.00 A	DP 537949	

Mark Name	Mark Condition	Description
IT 2 DP 491504		0.2D in grass berm
IT II DP 344232		0.25D in gravel
IT IV DP 60572		0.25D in gravel

\*\*\* End of Report \*\*\*

# Schedule / Memorandum

Land Registration District

**Canterbury**

Survey Number

**LT 579230**

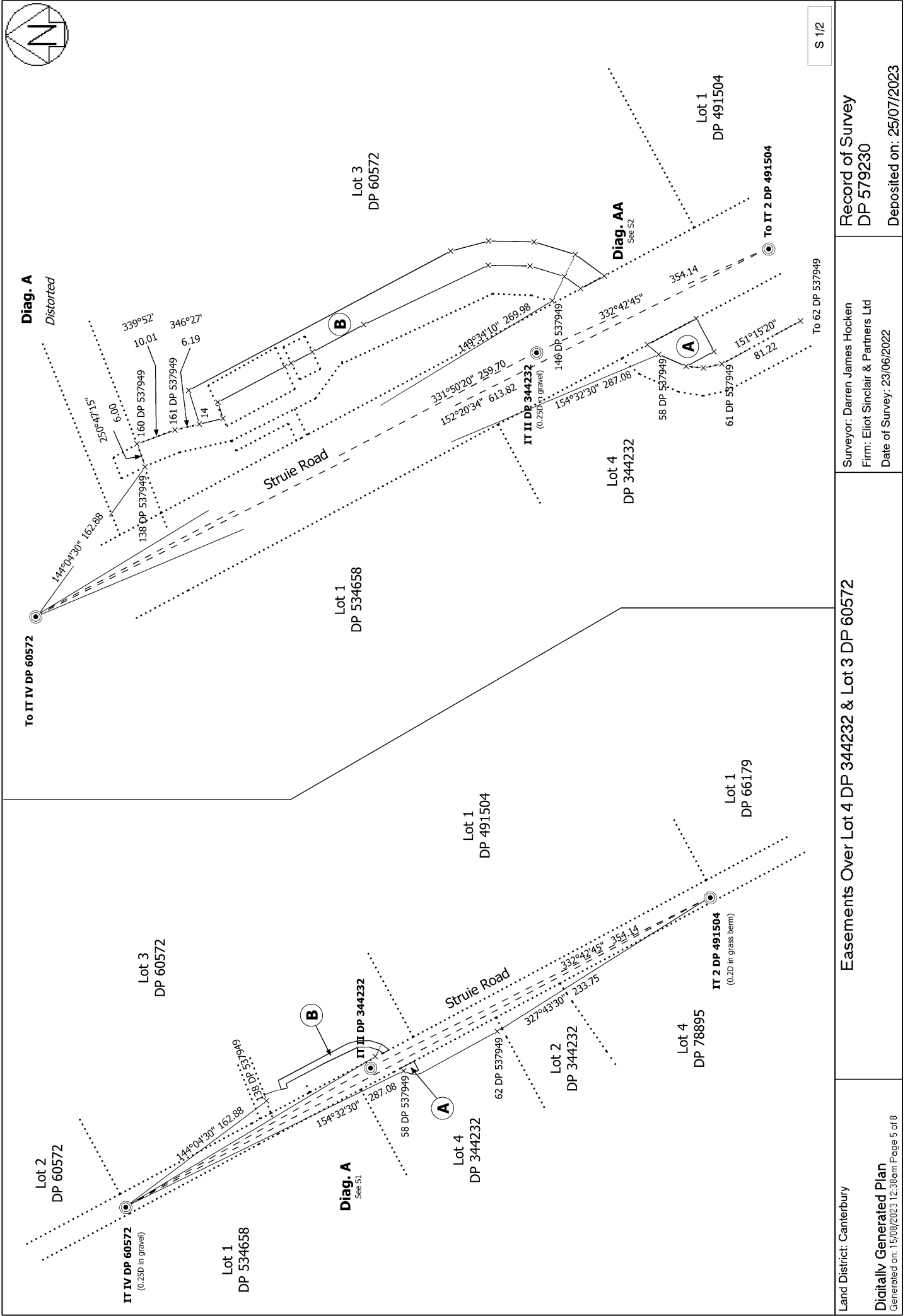
Territorial Authority (the Council)

**Selwyn District**

## Schedule of Easements in Gross

Last Edited: 11 Jul 2022 09:27:23

<u>Purpose</u>	<u>Shown</u>	<u>Burdened Land</u> <u>(Servient Tenement)</u>	<u>Grantee</u>
Right to convey water, electricity, telecommunications	A	Lot 4 DP 344232	Central Plains Water Limited
	B	Lot 3 DP 60572	Central Plains Water Limited



S 1/2

Land District: Canterbury

**Digitally Generated Plan**  
 Generated on: 15/08/2023 12:38pm | Page 5 of 8

**Easements Over Lot 4 DP 344232 & Lot 3 DP 60572**

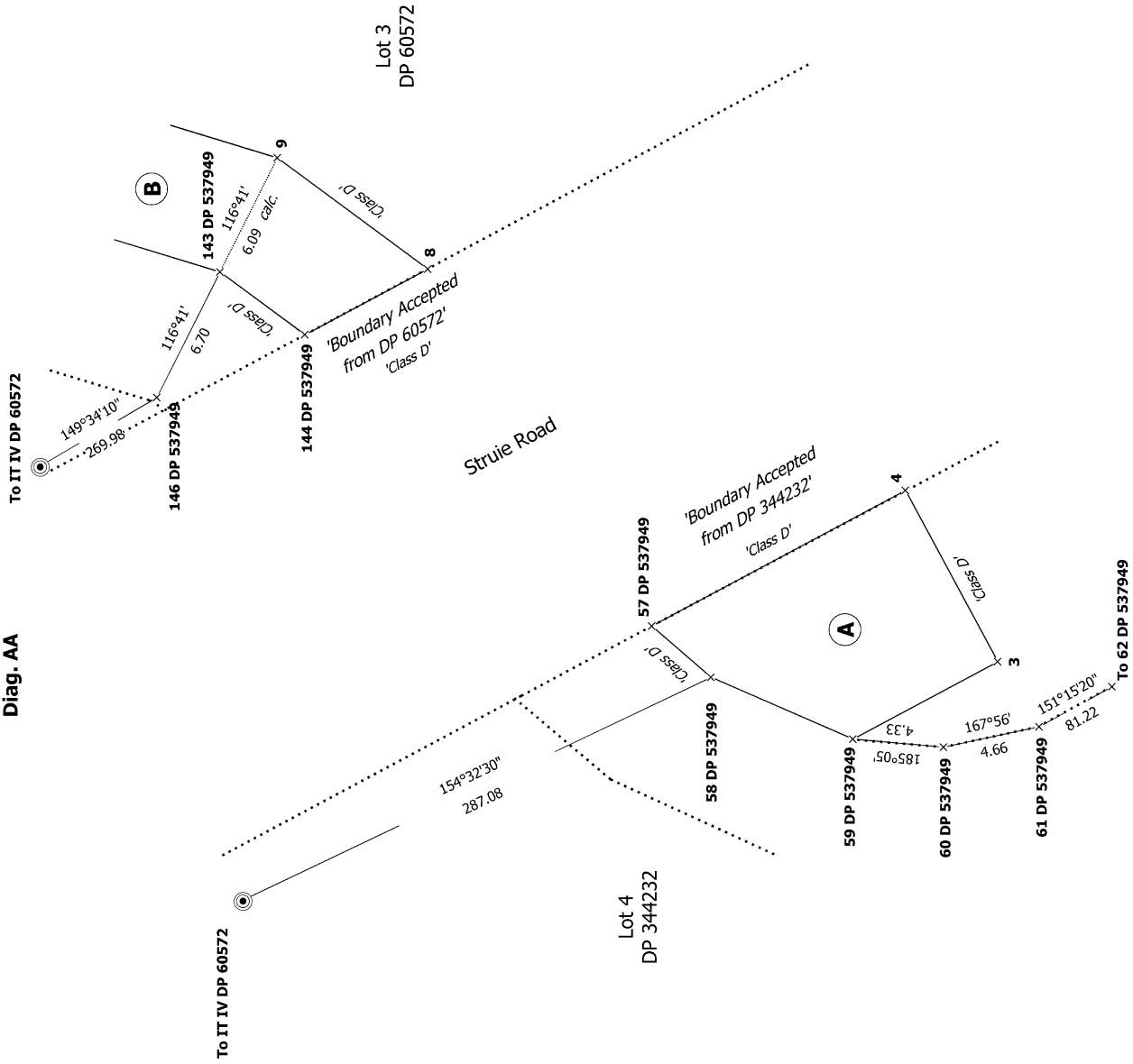
Surveyor: Darren James Hocken  
 Firm: Elliot Sinclair & Partners Ltd  
 Date of Survey: 23/06/2022

Record of Survey  
 DP 579230

Deposited on: 25/07/2023



Diag. AA



S 2/2

Land District: Canterbury

Digitally Generated Plan

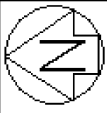
Generated on: 15/08/2023 12:38pm | Page 6 of 8

Easements Over Lot 4 DP 344232 & Lot 3 DP 60572

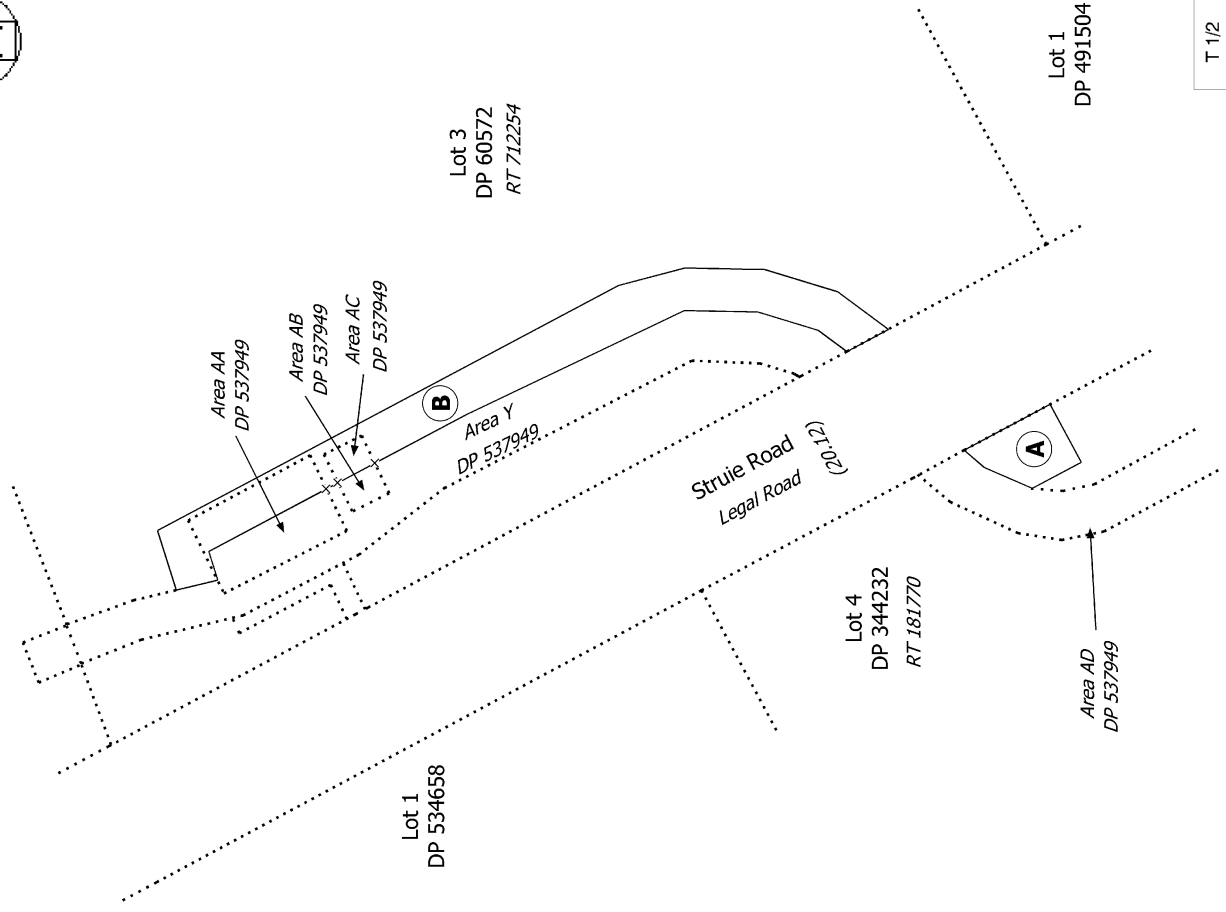
Surveyor: Darren James Hocken  
Firm: Elliot Sinclair & Partners Ltd  
Date of Survey: 23/06/2022

Record of Survey  
DP 579230

Deposited on: 25/07/2023



**Diag. AA**  
Non Primary



T 1/2

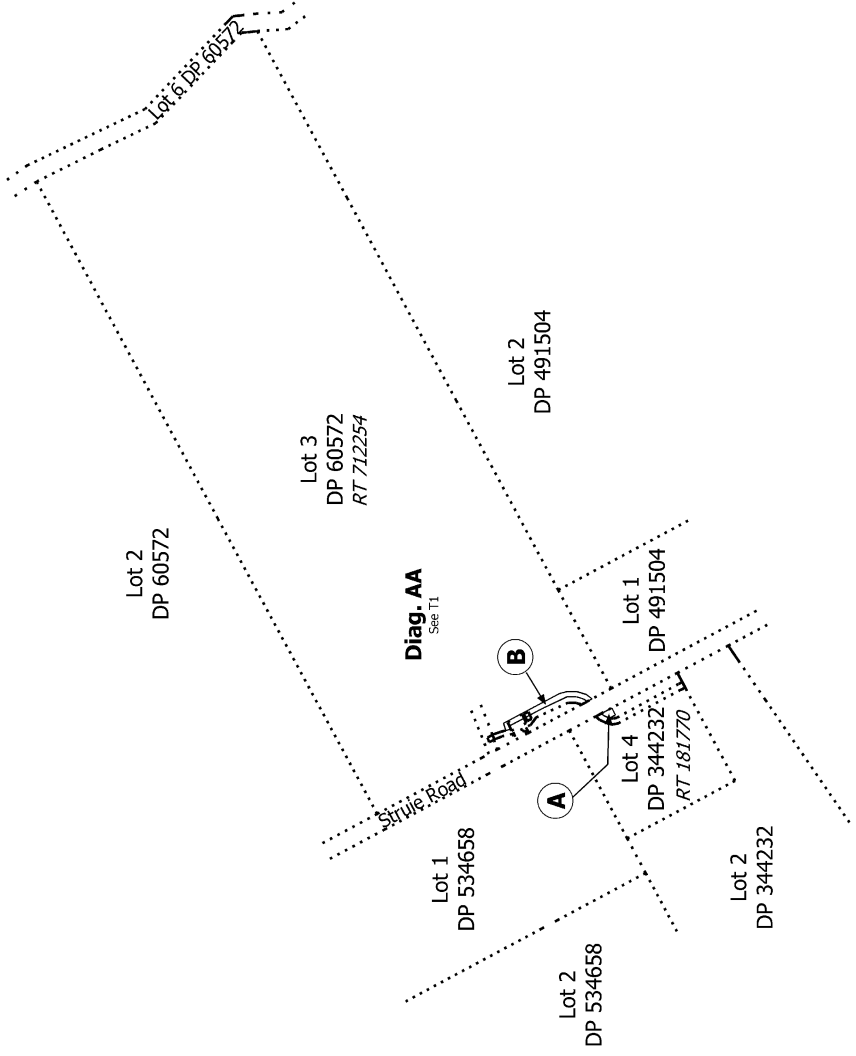
Record of Survey  
DP 579230

Deposited on: 25/07/2023

Surveyor: Darren James Hocken  
Firm: Elliot Sinclair & Partners Ltd  
Date of Survey: 23/06/2022

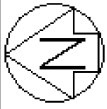
Easements Over Lot 4 DP 344232 & Lot 3 DP 60572

**Diag. A**  
Non Primary



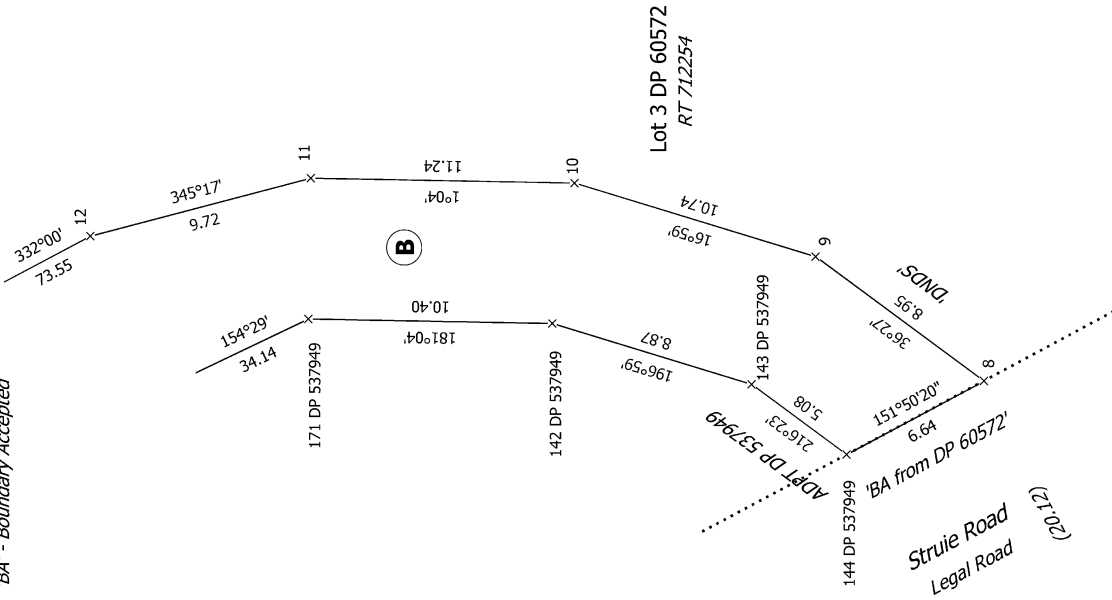
Land District: Canterbury

**Digitally Generated Plan**  
Generated on: 15/08/2023 12:38pm | Page 7 of 8



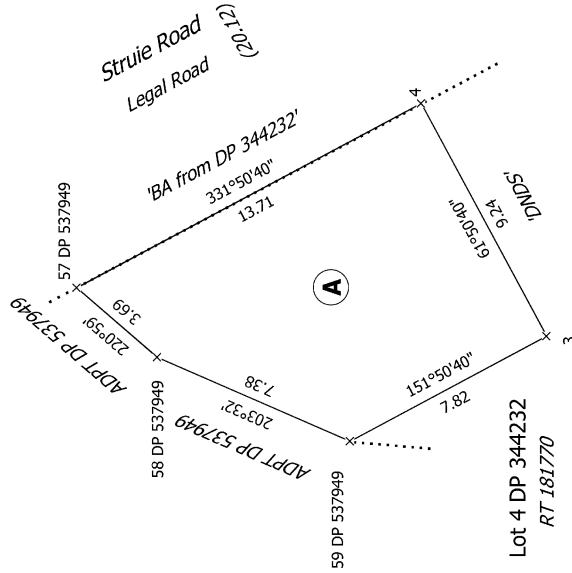
**Diag. AAB**  
Non Primary

'DNDS' - Distance Not Defined by Survey  
'BA' - Boundary Accepted



**Diag. AAA**  
Non Primary

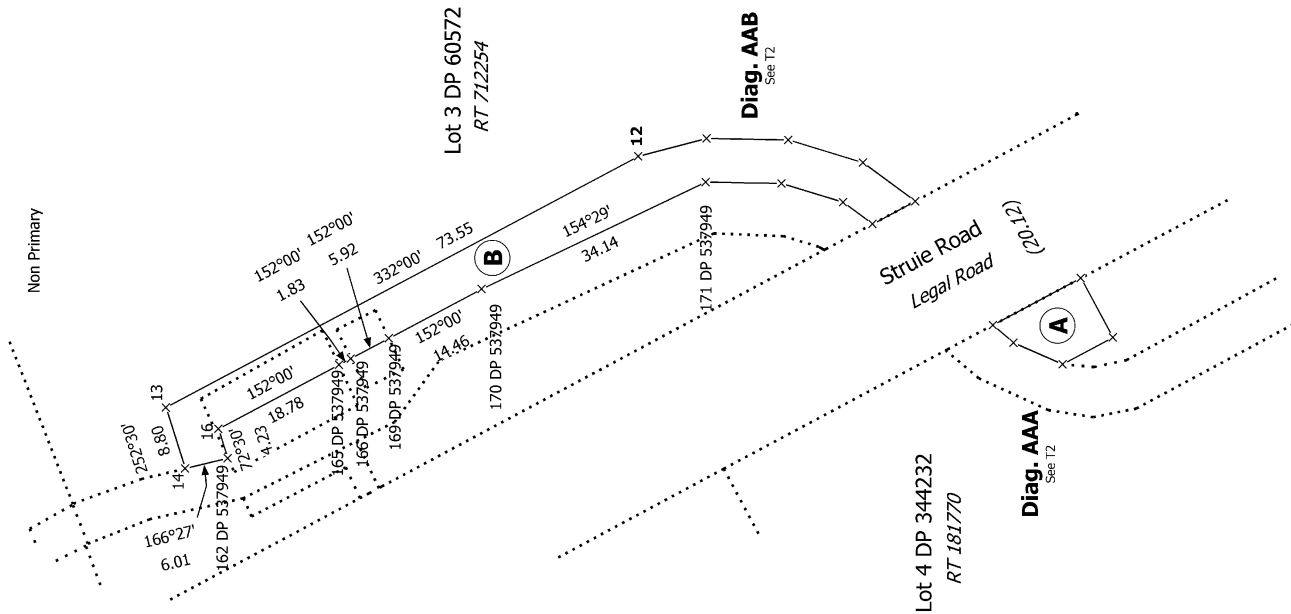
'DNDS' - Distance Not Defined by Survey  
'BA' - Boundary Accepted



Non Primary

**Diag. AAB**  
See T2

**Diag. AAA**  
See T2



T 2/2

Record of Survey  
DP 579230

Deposited on: 25/07/2023

Surveyor: Darren James Hocken  
Firm: Elliot Sinclair & Partners Ltd  
Date of Survey: 23/06/2022

Easements Over Lot 4 DP 344232 & Lot 3 DP 60572

Land District: Canterbury

**Digitally Generated Plan**

Generated on: 15/08/2023 12:38pm | Page 8 of 8