

# Record of Survey - DP 578248

**Survey Number** DP 578248  
**Surveyor Reference** 44 Torrance Street  
**Surveyor** Nigel George Baynes  
**Survey Firm** Trig Consultants Ltd  
**Surveyor Declaration** I Nigel George Baynes, being a licensed cadastral surveyor, certify that--  
 (a) this dataset provided by me and its related survey are accurate, correct and in accordance with the Cadastral Survey Act 2002 and Cadastral Survey Rules 2021; and  
 (b) the survey was undertaken by me or under my personal direction.  
 Declared on 23 Nov 2022 12:19 PM

## Survey Details

**Dataset Description** LOTS 1 TO 4 BEING A SUBDIVISION OF LOT 15 DEEDS PLAN 464  
**Purpose** LT Subdivision  
**Status** Deposited **Type** Survey  
**Land District** North Auckland **Survey Class** Class A  
**Meridional Circuit** Mount Eden 2000 **Vertical Datum** None

## Survey Dates

**Surveyed Date** 05/07/2022 **Certified Date** 23/11/2022  
**Submitted Date** 23/11/2022 12:19:54 **Survey Approval Date** 23/11/2022  
**Deposit Date** 17/05/2023

## Referenced Surveys

Survey Number	Land District	Bearing Correction
DP 130429	North Auckland	0°00'00"
DP 142407	North Auckland	0°00'00"
DP 16120	North Auckland	0°00'00"
DEED 464	North Auckland	0°00'00"
DP 123299	North Auckland	0°00'00"
DP 124299	North Auckland	0°00'00"
DP 524192	North Auckland	0°00'00"
DP 557994	North Auckland	0°00'00"

## Territorial Authorities

Auckland Council

## Comprised In

RT NA534/160 Ltd

## Created Parcels

Parcels	Parcel Intent	Area	RT Reference
Lot 1 Deposited Plan 578248	Fee Simple Title	0.0220 Ha	1069336
Lot 2 Deposited Plan 578248	Fee Simple Title	0.0189 Ha	1069337
Lot 3 Deposited Plan 578248	Fee Simple Title	0.0189 Ha	1069338
Lot 4 Deposited Plan 578248	Fee Simple Title	0.0219 Ha	1069339



# Record of Survey - DP 578248

---

## Created Parcels

Parcels	Parcel Intent	Area	RT Reference
Area A Deposited Plan 578248	Easement		
Area B Deposited Plan 578248	Easement		
Area C Deposited Plan 578248	Easement		
Area D Deposited Plan 578248	Easement		
<b>Total Area</b>		<hr/> 0.0817 Ha	

# Mark and Vector

Survey Number DP 578248

Meridional Circuit Mount Eden 2000

From	To	Code	Bearing	Adpt Surv	Bearing Correction	Distance	Adpt Surv	Class
SM 6821 SO 54417	SM 6823 SO 54417	ob0	13°15'20" M			75.955 M		
SM 6823 SO 54417	LP III DP 130429	ob3	104°30'40" M			63.77 M		
LP III DP 130429	LP II DP 142407	ob5	104°30'40" M			44.38 M		
LP II DP 142407	SM 6835 SO 54417	ob6	104°30'40" M			61.26 M		
AP 1 DP 524192	AD 5 DP 524192	ob38	242°36'00" A	DP 524192	0°00'00"	22.51 A	DP 524192	
AD 5 DP 524192	ABD 19 DP 578248	ob29	284°18'00" A	DP 16120	0°00'00"	18.77 A	DP 16120	
ABD 19 DP 578248	ABD 15 DP 578248	ob30	194°33'00" A	DP 16120	0°00'00"	14.08 C		Class A
ABD 15 DP 578248	ABD 16 DP 578248	ob31	194°33'00" A	DP 16120	0°00'00"	12.09 C		Class A
ABD 16 DP 578248	ABD 17 DP 578248	ob32	194°33'00" A	DP 16120	0°00'00"	12.09 C		Class A
ABD 17 DP 578248	PEG DP 16120	ob33	194°33'00" A	DP 16120	0°00'00"	7.76 C		Class A
PEG DP 16120	ABD 55 DP 557994	ob34	104°18'00" A	DP 557994	0°00'00"	1.00 A	DP 557994	
ABD 55 DP 557994	ABD 28 DP 557994	ob36	104°18'00" A	DP 557994	0°00'00"	16.97 A	DP 557994	
ABD 28 DP 557994	AD 23 DP 524192	ob39	104°18'00" A	DP 524192	0°00'00"	0.99 A	DP 524192	
AD 23 DP 524192	AP 6 DP 524192	ob40	101°09'00" A	DP 524192	0°00'00"	17.90 A	DP 524192	
AP 6 DP 524192	AP 1 DP 524192	ob28	13°16'40" A	DP 524192	0°00'00"	60.03 A	DP 524192	
PEG DP 16120	ABD 9 DP 578248	ob35	194°33'00" A	DP 557994	0°00'00"	6.28 A	DP 557994	Class A
ABD 9 DP 578248	ABD 52 DP 578248	ob37	284°21'30" A	DP 124299	0°00'00"	15.55 A	DP 123299	Class A
ABD 52 DP 578248	PEG DP 142407	ob26	284°19'00" A	DP 142407	0°00'00"	15.67 A	DP 142407	
PEG DP 142407	AD DP 123299	ob27	284°21'00" A	DP 123299	0°00'00"	15.67 A	DP 123299	
AD DP 123299	IT II DP 130429	ob41	347°15'00" A	DP 130429	0°00'00"	10.75 A	DP 130429	
IT II DP 130429	LP III DP 130429	ob23	356°51'00" A	DP 130429	0°00'00"	46.24 A	DP 130429	
LP II DP 142407	LP I DP 142407	ob7	104°30'40" A	DP 142407	0°00'00"	8.50 A	DP 142407	
LP I DP 142407	ABD 10 DP 578248	ob8	260°23'00" A	DP 142407	0°00'00"	2.99 A	DP 142407	
ABD 10 DP 578248	ABD 11 DP 578248	ob9	194°23'00" A	DP 142407	0°00'00"	14.08 C		Class A
ABD 11 DP 578248	ABD 12 DP 578248	ob11	194°23'00" A	DP 142407	0°00'00"	12.09 C		Class A
ABD 12 DP 578248	ABD 13 DP 578248	ob13	194°23'00" A	DP 142407	0°00'00"	12.09 C		Class A

# Mark and Vector

Survey Number DP 578248

Meridional Circuit Mount Eden 2000

From	To	Code	Bearing	Adpt Surv	Bearing Correction	Distance	Adpt Surv	Class
UNMK 30 DP 578248	ABD 52 DP 578248	ob57	194°23'00"	A DP 142407	0°00'00"	6.50 C		Class A
SM 6835 SO 54417	AP 1 DP 524192	ob2	357°28'00"	A DP 524192	0°00'00"	14.57 A	DP 524192	
ABD 10 DP 578248	UNMK 20 DP 578248	ob10	104°18'00"	A DEED 464	0°00'00"	3.50 C		Class A
UNMK 20 DP 578248	ABD 19 DP 578248	ob17	104°18'00"	A DEED 464	0°00'00"	12.19 C		Class A
ABD 11 DP 578248	UNMK 21 DP 578248	ob12	104°21'00"	C		3.50 C		Class A
UNMK 21 DP 578248	ABD 15 DP 578248	ob20	104°21'00"	C		12.16 C		Class A
ABD 12 DP 578248	UNMK 51 DP 578248	ob14	104°21'00"	C		3.50 C		Class A
ABD 13 DP 578248	UNMK 23 DP 578248	ob16	104°21'00"	C		3.50 C		Class A
UNMK 20 DP 578248	UNMK 21 DP 578248	ob18	194°23'00"	C		14.08 C		Class A
SM 6823 SO 54417	MA 1 DP 578248	ob4	96°05'15"	M		119.92 M		
MA 1 DP 578248	MA 2 DP 578248	ob42	103°44'00"	M		12.85 M		
MA 2 DP 578248	AP 3 DP 524192	ob48	103°49'30"	M		59.32 M		
AP 3 DP 524192	LP I DP 169490	ob54	160°14'00"	A DP 524192	0°00'00"	22.05 A	DP 524192	
LP I DP 169490	SM 6835 SO 54417	ob56	284°07'35"	M		33.82 M		
AP 3 DP 524192	AP 1 DP 524192	ob55	274°31'00"	A DP 524192	0°00'00"	26.06 A	DP 524192	
MA 1 DP 578248	ABD 11 DP 578248	ob43	202°37'00"	M		33.20 M		
MA 1 DP 578248	ABD 12 DP 578248	ob44	200°25'00"	M		45.20 M		
MA 1 DP 578248	ABD 13 DP 578248	ob45	199°08'40"	M		57.24 M		
MA 1 DP 578248	ABD 10 DP 578248	ob46	208°36'00"	M		19.37 M		
MA 1 DP 578248	ABD 52 DP 578248	ob47	198°12'20"	M		71.24 M		
MA 2 DP 578248	ABD 19 DP 578248	ob49	200°08'00"	M		19.01 M		
MA 2 DP 578248	ABD 15 DP 578248	ob50	197°45'00"	M		33.05 M		
MA 2 DP 578248	ABD 16 DP 578248	ob51	196°54'00"	M		45.13 M		
MA 2 DP 578248	ABD 17 DP 578248	ob52	196°24'00"	M		57.21 M		
MA 2 DP 578248	ABD 9 DP 578248	ob53	196°02'00"	M		71.25 M		

# Mark and Vector

Survey Number DP 578248

Meridional Circuit Mount Eden 2000

From	To	Code	Bearing	Adpt Surv	Bearing Correction	Distance	Adpt Surv	Class
SM 6835 SO 54417	AP 3 DP 524192	ob1	63°44'30"	M		28.25 M		
ABD 13 DP 578248	UNMK 30 DP 578248	ob15	194°23'00"	A	DP 142407	0°00'00"	7.54 C	Class A
UNMK 31 DP 578248	UNMK 30 DP 578248	ob58	284°21'00"	C			3.50 C	Class A
UNMK 51 DP 578248	ABD 16 DP 578248	ob21	104°21'00"	C			12.13 C	Class A
UNMK 23 DP 578248	ABD 17 DP 578248	ob24	104°21'00"	C			12.09 C	Class A
UNMK 21 DP 578248	UNMK 51 DP 578248	ob19	194°23'00"	C			12.09 C	Class A
UNMK 51 DP 578248	UNMK 23 DP 578248	ob22	194°23'00"	C			12.09 C	Class A
UNMK 23 DP 578248	UNMK 31 DP 578248	ob25	194°23'00"	C			7.54 C	Class A

Mark Name	Mark Condition	Description
ABD 55 DP 557994		Old mark no record
AP 1 DP 524192		In channel
AP 3 DP 524192		In concrete footpath
AP 6 DP 524192		In paver
SM 6821 SO 54417		Under steel lid
SM 6823 SO 54417		Under steel lid
SM 6835 SO 54417		Under steel lid

\*\*\* End of Report \*\*\*

# Schedule / Memorandum

Land Registration District

**North Auckland**

Survey Number

**LT 578248**

Territorial Authority (the Council)

**Auckland Council**

## Memorandum of Easements

Last Edited: 17 Oct 2022 12:26:57

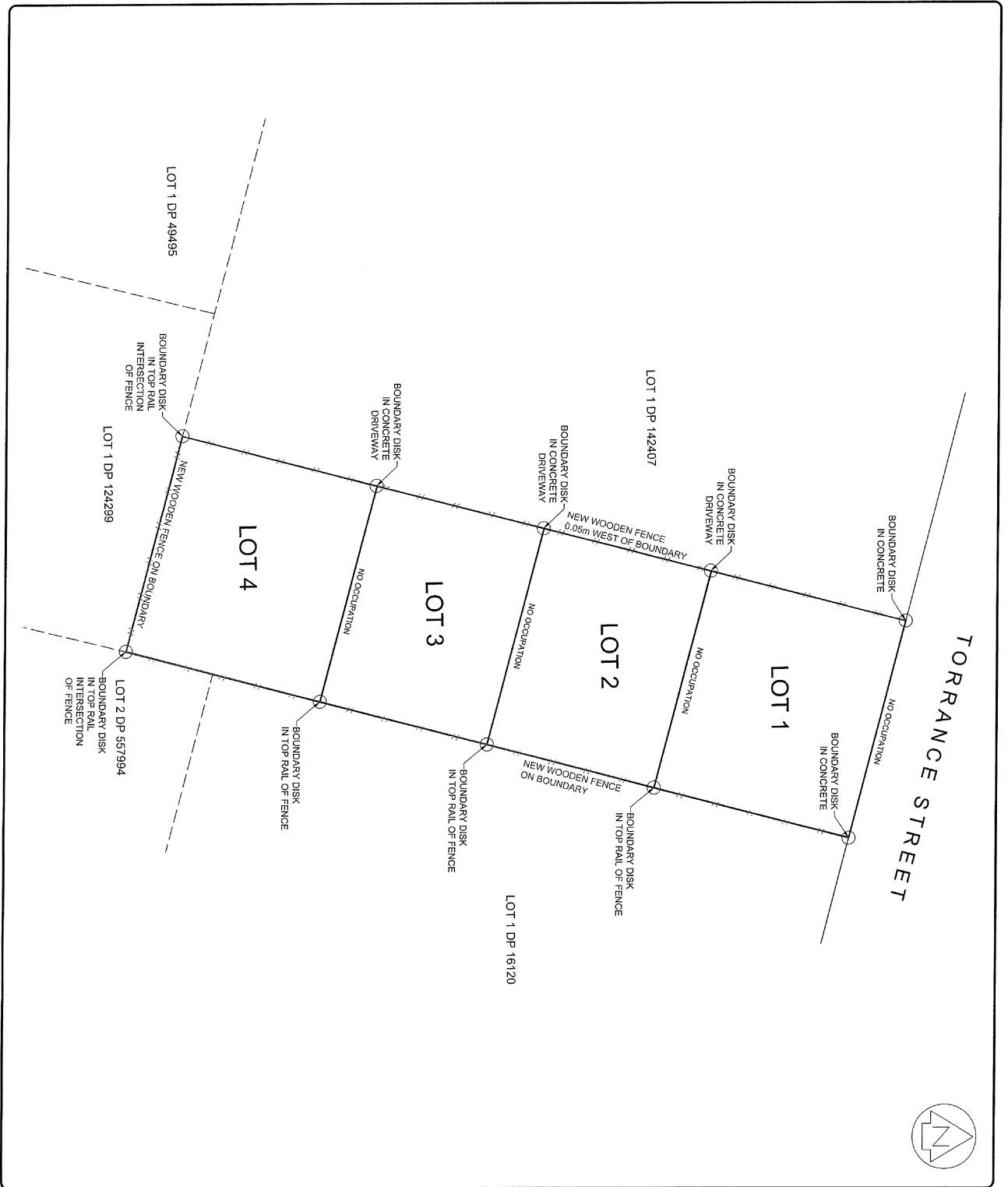
<u>Purpose</u>	<u>Shown</u>	<u>Burdened Land</u> ( <u>Servient Tenement</u> )	<u>Benefited Land</u> ( <u>Dominant Tenement</u> )
Right of Way	A	Lot 1	Lot 2, Lot 3, Lot 4
	B	Lot 2	Lot 1, Lot 3, Lot 4
	C	Lot 3	Lot 2, Lot 4
	D	Lot 4	Lot 3
Right to convey electricity, gas, telecommunications, water	A	Lot 1	Lot 2, Lot 3, Lot 4
	B	Lot 2	Lot 3, Lot 4
	C	Lot 3	Lot 4

## Schedule of Easements in Gross

Last Edited: 17 Oct 2022 12:26:57

<u>Purpose</u>	<u>Shown</u>	<u>Burdened Land</u> ( <u>Servient Tenement</u> )	<u>Grantee</u>
Right to convey telecommunications	A	Lot 1	Chorus New Zealand Limited
	B	Lot 2	Chorus New Zealand Limited
	C	Lot 3	Chorus New Zealand Limited

# Occupation Diagram



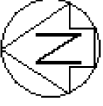
<b>DATE</b>	SA 10/22	<b>PREPARED</b>	
<b>DRAWN</b>	HB 10/22	<b>CHECKED</b>	
<b>SCALE</b>		<b>DATE</b>	
1:125 (A1)		1:250 (A3)	
<b>DRAWING PATH</b>			
C:\Users\ADMINISTRATOR\Desktop\21618\21618.dwg			
<b>DRAWING NO</b>	21618	<b>SHEET</b>	1 of 1
<b>REVISION</b>	0		

<b>COPYRIGHT</b>	<b>CLIENT</b>
This document and the copyright in this document remain the property of TRIG CONSULTANTS LTD. The contents of this document may not be reproduced either in whole or in part by any means.	
<b>TRIGCONSULTANTS</b>	<b>PROJECT</b>
SPECIALISTS IN SURVEYING AND CONSTRUCTION	44 TORRANCE STREET EPSOM
29 Rosebery Place, Rosebery, Auckland 10112 P.O. Box 141 002 Ph: 011 418 4435 Email: Admin@trigconsultants.co.nz	<b>TITLE</b>
	OCCUPATION DIAGRAM OVER LOT 15 DEEDS REG 464

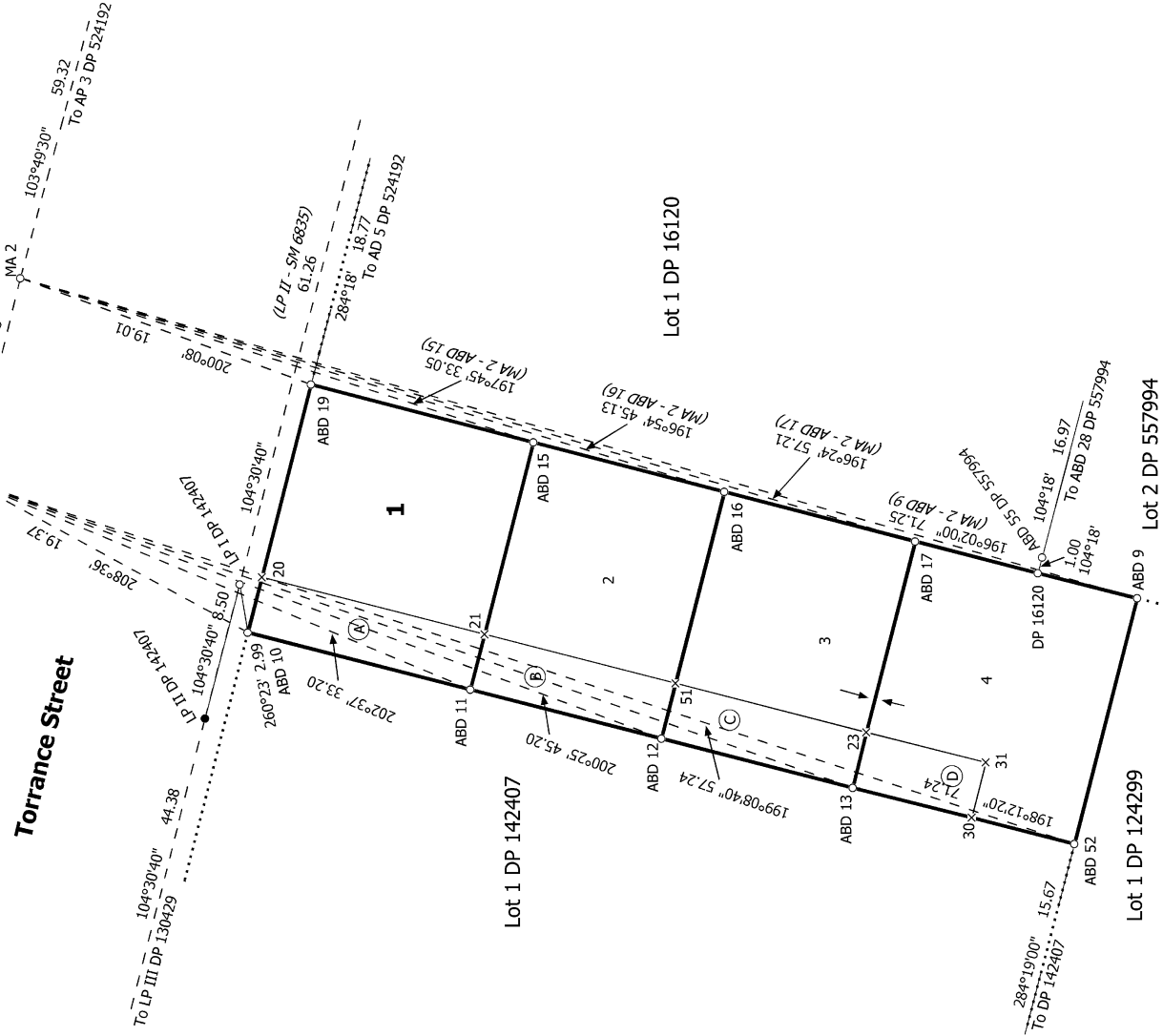






Diag. AA

Torrance Street



S 2/2

Land District: North Auckland

Digitally Generated Plan

Generated on: 18/08/2023 3:27pm Page 9 of 10

LOTS 1 TO 4 BEING A SUBDIVISION OF LOT 15 DEEDS PLAN 464

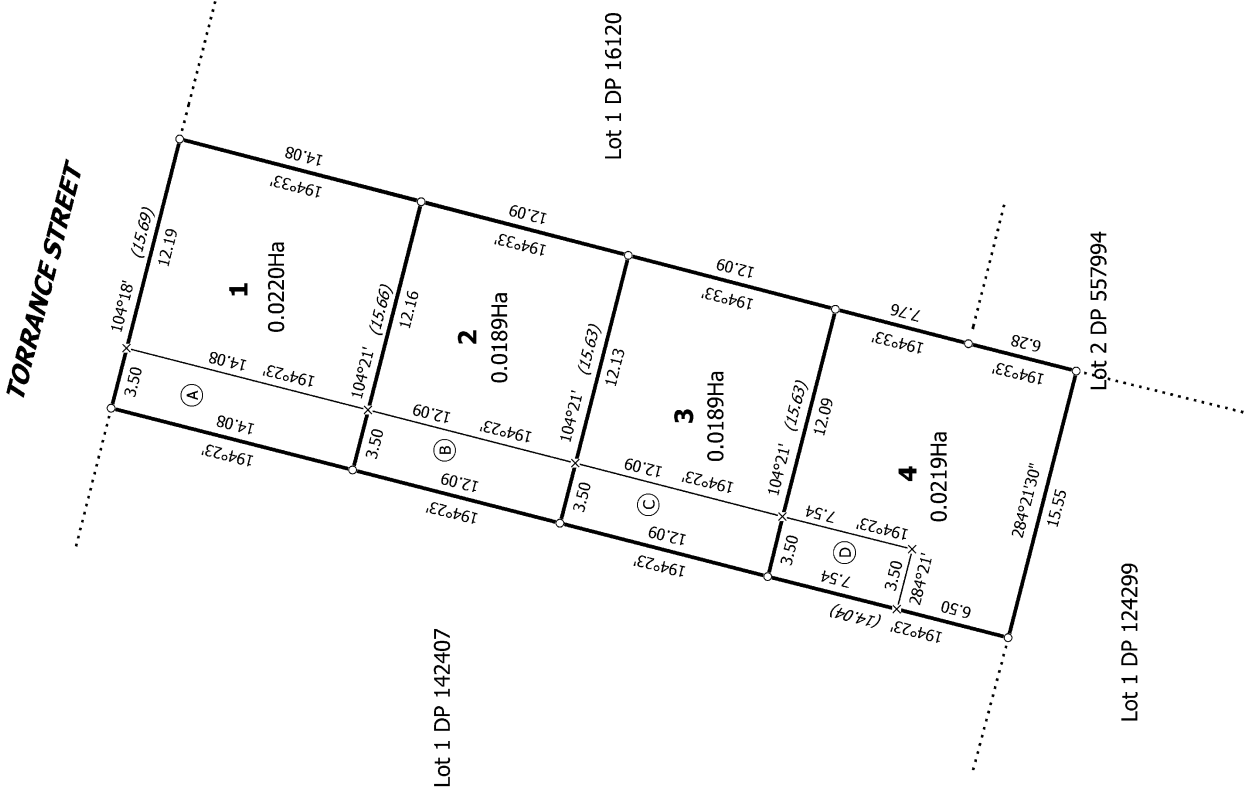
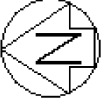
Surveyor: Nigel George Baynes

Firm: Trig Consultants Ltd

Date of Survey: 5/07/2022

Record of Survey  
DP 578248

Deposited on: 17/05/2023



T 1/1

**LOTS 1 TO 4 BEING A SUBDIVISION OF LOT 15 DEEDS PLAN 464**

Surveyor: Nigel George Baynes  
Firm: Trig Consultants Ltd  
Date of Survey: 5/07/2022

Record of Survey  
DP 578248  
Deposited on: 17/05/2023