

Record of Survey - DP 578013

Survey Number DP 578013
Surveyor Reference 21136
Surveyor Ann-Maree Elizabeth Wallace
Survey Firm Tripp Andrews Surveyors Ltd
Surveyor Declaration I Ann-Maree Elizabeth Wallace, being a licensed cadastral surveyor, certify that--
 (a) this dataset provided by me and its related survey are accurate, correct and in accordance with the Cadastral Survey Act 2002 and Cadastral Survey Rules 2021; and
 (b) the survey was undertaken by me or under my personal direction.
 Declared on 28 Aug 2023 11:29 AM

Survey Details

Dataset Description HL Lots 1 - 4, Lot 5, HL Lot 6 & Lots 7 - 11 Being a Subdivision of Lot 9 DP 57330
Purpose LT Subdivision
Status Deposited **Type** Survey
Land District North Auckland **Survey Class** Class A
Meridional Circuit Mount Eden 2000 **Vertical Datum** Auckland 1946

Survey Dates

Surveyed Date 19/12/2022 **Certified Date** 28/08/2023
Submitted Date 28/08/2023 11:29:19 **Survey Approval Date** 29/08/2023
Deposit Date 28/07/2023

Referenced Surveys

Survey Number	Land District	Bearing Correction
DP 57330	North Auckland	-0°02'30"
DP 531804	North Auckland	0°00'00"

Territorial Authorities

Auckland Council

Comprised In

RT NA12C/1022

Created Parcels

Parcels	Parcel Intent	Area	RT Reference
Area H Deposited Plan 578013	Easement		
Height-Limited Lot 1 Deposited Plan 578013	Fee Simple Title	0.0109 Ha	1068198
Height-Limited Lot 2 Deposited Plan 578013	Fee Simple Title	0.0082 Ha	1068199
Height-Limited Lot 3 Deposited Plan 578013	Fee Simple Title	0.0082 Ha	1068200
Height-Limited Lot 4 Deposited Plan 578013	Fee Simple Title	0.0115 Ha	1068201
Lot 5 Deposited Plan 578013	Fee Simple Title	0.0332 Ha	1068202
Height-Limited Lot 6 Deposited Plan 578013	Fee Simple Title	0.0369 Ha	Multiple
Lot 7 Deposited Plan 578013	Fee Simple Title	0.0013 Ha	1068199
Lot 8 Deposited Plan 578013	Fee Simple Title	0.0013 Ha	1068200
Lot 9 Deposited Plan 578013	Fee Simple Title	0.0013 Ha	1068201
Lot 10 Deposited Plan 578013	Fee Simple Title	0.0016 Ha	1068202



Record of Survey - DP 578013

Created Parcels

Parcels	Parcel Intent	Area	RT Reference
Lot 11 Deposited Plan 578013	Fee Simple Title	0.0002 Ha	Multiple
Height-Limited Area A Deposited Plan 578013	Easement		
Height-Limited Area B Deposited Plan 578013	Easement		
Height-Limited Area C Deposited Plan 578013	Easement		
Height-Limited Area D Deposited Plan 578013	Easement		
Height-Limited Area E Deposited Plan 578013	Easement		
Height-Limited Area F Deposited Plan 578013	Easement		
Height-Limited Area G Deposited Plan 578013	Easement		
Total Area		<hr/> 0.1146 Ha	

Mark and Vector

Survey Number DP 578013

Meridional Circuit Mount Eden 2000

From	To	Code	Bearing	Adpt Surv	Bearing Correction	Distance	Adpt Surv	Class
LP XV DP 57330	AP 1 DP 531804	ob0	190°58'00"	M		47.90 M		
AP 1 DP 531804	LP XIV DP 57330	ob1	190°58'00"	M		23.03 M		
LP XIV DP 57330	ALP I DP 578013	ob4	190°58'00"	M		6.61 M		
ALP I DP 578013	RM XIII DP 57330	ob7	190°58'00"	M		89.27 M		
AP 1 DP 531804	AP 1A DP 531804	ob2	104°49'20"	M		51.44 M		
AP 1A DP 531804	AP 1B DP 531804	ob10	104°49'20"	M		16.79 M		
AP 1B DP 531804	LP I DP 60174	ob11	104°49'20"	M		13.99 M		
LP I DP 60174	LP XIV DP 57330	ob9	268°55'10"	M		83.88 M		
AP 1 DP 531804	AP IV DP 578013	ob3	271°03'20"	M		70.49 M		
AP IV DP 578013	AP III DP 578013	ob12	173°16'20"	M		22.95 M		
AP III DP 578013	AP II DP 578013	ob32	85°25'10"	M		17.84 M		
AP II DP 578013	ALP I DP 578013	ob41	101°30'30"	M		45.29 M		
AP IV DP 578013	IS VI DP 578013	ob13	272°26'00"	M		16.04 M		
IS VI DP 578013	IS V DP 578013	ob47	172°47'00"	M		24.84 M		
IS V DP 578013	AP III DP 578013	ob50	85°43'00"	M		15.62 M		
RM XIII DP 57330	IS XI DP 57330	ob8	327°41'30"	A DP 57330	-0°02'30"	14.38 A DP 57330		
IS XI DP 57330	IS VIIA DP 57330	ob53	286°45'10"	A DP 57330	-0°02'30"	29.88 A DP 57330		
IS VIIA DP 57330	IS VII DP 57330	ob54	286°45'10"	A DP 57330	-0°02'30"	17.62 A DP 57330		
IS VII DP 57330	IS VIA DP 57330	ob55	355°37'30"	A DP 57330	-0°02'30"	38.71 A DP 57330		
IS VIA DP 57330	IS VI DP 57330	ob56	355°37'30"	A DP 57330	-0°02'30"	13.46 A DP 57330		
IS VI DP 57330	IS VB DP 57330	ob57	355°37'30"	A DP 57330	-0°02'30"	15.54 A DP 57330		
IS VB DP 57330	AP III DP 578013	ob58	81°43'00"	M		13.31 M		
IS VB DP 57330	IS VA DP 57330	ob59	355°37'30"	A DP 57330	-0°02'30"	26.26 A DP 57330		
IS VA DP 57330	IS V DP 57330	ob61	355°37'30"	A DP 57330	-0°02'30"	28.07 A DP 57330		
IS V DP 57330	IS V DP 36486	ob63	80°13'00"	A DP 57330	-0°02'30"	46.57 A DP 57330		
IS V DP 36486	IS IVB DP 57330	ob64	80°13'00"	A DP 57330	-0°02'30"	10.22 A DP 57330		
IS IVB DP 57330	IS IVA DP 57330	ob66	80°13'00"	A DP 57330	-0°02'30"	34.42 A DP 57330		

Mark and Vector

Survey Number DP 578013

Meridional Circuit Mount Eden 2000

From	To	Code	Bearing	Adpt Surv	Bearing Correction	Distance	Adpt Surv	Class
IS IVA DP 57330	LP XV DP 57330	ob67	80°13'00"	A DP 57330	-0°02'30"	4.41 A	DP 57330	
IS V DP 36486	PEG 26 DP 578013	ob65	186°55'30"	A DP 57330	-0°02'30"	38.59 A	DP 57330	
PEG 26 DP 578013	PEG 27 DP 578013	ob68	273°31'30"	A DP 57330	-0°02'30"	22.49 C		Class A
PEG 27 DP 578013	PEG 28 DP 578013	ob69	273°31'30"	A DP 57330	-0°02'30"	1.00 C		Class A
PEG 28 DP 578013	PEG 29 DP 578013	ob71	273°31'30"	A DP 57330	-0°02'30"	6.47 C		Class A
PEG 29 DP 578013	IS VA DP 57330	ob73	273°31'30"	A DP 57330	-0°02'30"	9.21 C		Class A
IS VA DP 57330	PEG 30 DP 578013	ob62	273°31'30"	A DP 57330	-0°02'30"	4.53 A	DP 57330	Class A
PEG 30 DP 578013	PEG 31 DP 578013	ob75	176°07'20"	A DP 57330	-0°02'30"	8.67 C		Class A
PEG 31 DP 578013	PEG 32 DP 578013	ob76	176°07'20"	A DP 57330	-0°02'30"	5.29 C		Class A
PEG 32 DP 578013	PEG 33 DP 578013	ob77	176°07'20"	A DP 57330	-0°02'30"	5.31 C		Class A
PEG 33 DP 578013	PEG 19 DP 57330	ob78	176°07'20"	A DP 57330	-0°02'30"	7.57 C		Class A
PEG 19 DP 57330	IS VB DP 57330	ob79	86°07'30"	A DP 57330	-0°02'30"	4.72 A	DP 57330	Class A
IS VB DP 57330	PEG 35 DP 578013	ob60	86°07'30"	A DP 57330	-0°02'30"	8.38 C		Class A
PEG 35 DP 578013	ABD 36 DP 578013	ob80	86°07'30"	A DP 57330	-0°02'30"	24.62 C		Class A
ABD 36 DP 578013	ABD 37 DP 578013	ob81	10°57'30"	A DP 57330	-0°02'30"	3.66 A	DP 57330	
ABD 37 DP 578013	IS (38) DP 57330	ob82	10°57'30"	A DP 57330	-0°02'30"	15.17 A	DP 57330	Class A
IS (38) DP 57330	PEG 26 DP 578013	ob83	10°57'30"	A DP 57330	-0°02'30"	3.11 A	DP 57330	Class A
LP XIV DP 57330	ABD 39 DP 578013	ob5	242°57'30"	M		5.22 M		
ABD 39 DP 578013	ABD 37 DP 578013	ob84	280°57'30"	A DP 57330	-0°02'30"	39.03 A	DP 57330	Class A
ABD 39 DP 578013	PEG 40 DP 578013	ob85	190°57'30"	A DP 57330	-0°02'30"	3.66 A	DP 57330	Class A
PEG 40 DP 578013	UNMK (84) DP 57330	ob86	280°57'30"	A DP 57330	-0°02'30"	1.83 A	DP 57330	Class A
PEG 29 DP 578013	PEG 41 DP 578013	ob74	176°07'20"	C		2.27 C		Class A
PEG 41 DP 578013	ABD 42 DP 578013	ob87	86°07'20"	C		0.50 C		Class A
ABD 42 DP 578013	ABD 43 DP 578013	ob88	176°07'20"	C		4.64 C		Class A

Mark and Vector

Survey Number DP 578013

Meridional Circuit Mount Eden 2000

From	To	Code	Bearing	Adpt Surv	Bearing Correction	Distance	Adpt Surv	Class
ABD 43 DP 578013	ABD 44 DP 578013	ob89	176°07'20"	C		5.29 C		Class A
ABD 44 DP 578013	ABD 45 DP 578013	ob91	176°07'20"	C		5.31 C		Class A
ABD 45 DP 578013	ABD 46 DP 578013	ob93	176°07'20"	C		5.11 C		Class A
ABD 46 DP 578013	ABD 47 DP 578013	ob95	266°07'20"	C		1.02 C		Class A
ABD 47 DP 578013	PEG 35 DP 578013	ob96	176°07'20"	C		2.45 C		Class A
PEG 28 DP 578013	ABD 48 DP 578013	ob72	176°07'20"	C		2.73 C		Class A
ABD 48 DP 578013	ABD 49 DP 578013	ob97	176°07'20"	C		2.68 C		Class A
ABD 49 DP 578013	ABD 50 DP 578013	ob98	176°07'20"	C		2.70 C		Class A
ABD 50 DP 578013	ABD 51 DP 578013	ob100	176°07'20"	C		2.70 C		Class A
ABD 51 DP 578013	ABD 52 DP 578013	ob102	266°07'20"	C		0.90 C		Class A
ABD 52 DP 578013	ABD 82 DP 578013	ob104	176°07'20"	C		7.33 C		Class A
ABD 82 DP 578013	UNMK 53 DP 578013	ob141	176°07'20"	C		0.10 C		Class A
UNMK 53 DP 578013	ABD 83 DP 578013	ob105	86°07'20"	C		0.10 C		Class A
ABD 83 DP 578013	ABD 54 DP 578013	ob142	86°07'20"	C		1.93 C		Class A
ABD 54 DP 578013	ABD 55 DP 578013	ob106	86°07'20"	C		7.00 C		Class A
ABD 55 DP 578013	ABD 56 DP 578013	ob108	86°07'20"	C		3.35 C		Class A
ABD 56 DP 578013	ABD 37 DP 578013	ob109	105°08'00"	C		7.55 C		Class A
ABD 51 DP 578013	PEG 57 DP 578013	ob103	86°07'20"	C		5.00 C		Class A
PEG 57 DP 578013	PEG 58 DP 578013	ob110	356°07'20"	C		2.70 C		Class A
PEG 58 DP 578013	PEG 59 DP 578013	ob111	356°07'20"	C		2.70 C		Class A
PEG 59 DP 578013	ABD 60 DP 578013	ob112	356°07'20"	C		2.68 C		Class A
ABD 60 DP 578013	ABD 61 DP 578013	ob113	266°07'20"	C		4.00 C		Class A
ABD 61 DP 578013	ABD 48 DP 578013	ob114	266°07'20"	C		1.00 C		Class A
PEG 27 DP 578013	ABD 61 DP 578013	ob70	176°07'20"	C		2.60 C		Class A

Mark and Vector

Survey Number DP 578013

Meridional Circuit Mount Eden 2000

From	To	Code	Bearing	Adpt Surv	Bearing Correction	Distance	Adpt Surv	Class
ABD 49 DP 578013	PEG 59 DP 578013	ob99	86°07'20"	C		5.00 C		Class A
ABD 50 DP 578013	PEG 58 DP 578013	ob101	86°07'20"	C		5.00 C		Class A
ABD 54 DP 578013	ABD 62 DP 578013	ob107	176°07'20"	C		2.40 C		Class A
ABD 62 DP 578013	ABD 63 DP 578013	ob115	86°07'20"	C		7.00 C		Class A
ABD 63 DP 578013	ABD 55 DP 578013	ob116	356°07'20"	C		2.40 C		Class A
ABD 43 DP 578013	UNMK 64 DP 578013	ob90	266°07'20"	C		0.57 C		Class A
UNMK 64 DP 578013	UNMK 65 DP 578013	ob117	266°07'20"	C		9.55 C		Class A
UNMK 65 DP 578013	PEG 31 DP 578013	ob120	266°07'20"	C		4.00 C		Class A
ABD 44 DP 578013	UNMK 66 DP 578013	ob92	266°07'20"	C		0.57 C		Class A
UNMK 66 DP 578013	UNMK 67 DP 578013	ob121	266°07'20"	C		9.55 C		Class A
UNMK 67 DP 578013	PEG 32 DP 578013	ob124	266°07'20"	C		4.00 C		Class A
ABD 45 DP 578013	UNMK 68 DP 578013	ob94	266°07'20"	C		0.54 C		Class A
UNMK 68 DP 578013	UNMK 69 DP 578013	ob125	266°07'20"	C		9.58 C		Class A
UNMK 69 DP 578013	PEG 33 DP 578013	ob127	266°07'20"	C		4.00 C		Class A
UNMK 68 DP 578013	UNMK 70 DP 578013	ob126	176°07'20"	C		0.15 C		Class A
UNMK 70 DP 578013	UNMK 71 DP 578013	ob129	266°07'20"	C		9.58 C		Class A
UNMK 71 DP 578013	UNMK 69 DP 578013	ob130	356°07'20"	C		0.15 C		Class A
UNMK 69 DP 578013	UNMK 72 DP 578013	ob128	356°07'20"	C		0.15 C		Class A
UNMK 72 DP 578013	UNMK 73 DP 578013	ob131	86°07'20"	C		9.58 C		Class A
UNMK 73 DP 578013	UNMK 68 DP 578013	ob132	176°07'20"	C		0.15 C		Class A
UNMK 66 DP 578013	UNMK 74 DP 578013	ob122	176°07'20"	C		0.15 C		Class A
UNMK 74 DP 578013	UNMK 75 DP 578013	ob133	266°07'20"	C		9.55 C		Class A
UNMK 75 DP 578013	UNMK 67 DP 578013	ob134	356°07'20"	C		0.15 C		Class A
UNMK 66 DP 578013	UNMK 76 DP 578013	ob123	356°07'20"	C		0.15 C		Class A

Mark and Vector

Survey Number DP 578013

Meridional Circuit Mount Eden 2000

From	To	Code	Bearing	Adpt Surv	Bearing Correction	Distance	Adpt Surv	Class
UNMK 76 DP 578013	UNMK 77 DP 578013	ob135	266°07'20"	C		9.55 C		Class A
UNMK 77 DP 578013	UNMK 67 DP 578013	ob136	176°07'20"	C		0.15 C		Class A
UNMK 64 DP 578013	UNMK 78 DP 578013	ob118	176°07'20"	C		0.15 C		Class A
UNMK 78 DP 578013	UNMK 79 DP 578013	ob137	266°07'20"	C		9.55 C		Class A
UNMK 79 DP 578013	UNMK 65 DP 578013	ob138	356°07'20"	C		0.15 C		Class A
UNMK 64 DP 578013	UNMK 80 DP 578013	ob119	356°07'20"	C		0.15 C		Class A
UNMK 80 DP 578013	UNMK 81 DP 578013	ob139	266°07'20"	C		9.55 C		Class A
UNMK 81 DP 578013	UNMK 65 DP 578013	ob140	176°07'20"	C		0.15 C		Class A
AP II DP 578013	ABD 37 DP 578013	ob42	46°59'00"	M		3.65 M		
AP II DP 578013	ABD 36 DP 578013	ob43	119°14'00"	M		2.26 M		
AP II DP 578013	ABD 56 DP 578013	ob44	314°00'00"	M		6.42 M		
AP II DP 578013	ABD 55 DP 578013	ob45	298°00'00"	M		9.02 M		
AP II DP 578013	ABD 63 DP 578013	ob46	283°16'00"	M		8.01 M		
AP III DP 578013	PEG 35 DP 578013	ob33	254°21'00"	M		5.00 M		
AP III DP 578013	ABD 47 DP 578013	ob34	282°26'00"	M		5.10 M		
AP III DP 578013	ABD 46 DP 578013	ob35	286°25'00"	M		4.13 M		
AP III DP 578013	ABD 45 DP 578013	ob36	325°32'00"	M		7.60 M		
AP III DP 578013	ABD 82 DP 578013	ob37	8°53'00"	M		5.21 M		
AP III DP 578013	ABD 83 DP 578013	ob38	10°13'00"	M		5.14 M		
AP III DP 578013	ABD 54 DP 578013	ob39	28°41'00"	M		5.91 M		
AP III DP 578013	ABD 62 DP 578013	ob40	47°03'00"	M		4.10 M		
IS V DP 578013	PEG 33 DP 578013	ob51	336°34'00"	M		7.07 M		
IS V DP 578013	PEG 32 DP 578013	ob52	344°56'30"	M		12.21 M		
IS VI DP 578013	PEG 30 DP 578013	ob48	317°25'00"	M		1.46 M		

Mark and Vector

Survey Number DP 578013

Meridional Circuit Mount Eden 2000

From	To	Code	Bearing	Adpt Surv	Bearing Correction	Distance	Adpt Surv	Class
IS VI DP 578013	PEG 31 DP 578013	ob49	183°02'00" M			7.59 M		
AP IV DP 578013	PEG 29 DP 578013	ob14	285°30'00" M			3.42 M		
AP IV DP 578013	PEG 28 DP 578013	ob15	80°44'00" M			3.21 M		
AP IV DP 578013	PEG 27 DP 578013	ob16	83°46'00" M			4.19 M		
AP IV DP 578013	ABD 48 DP 578013	ob17	123°24'00" M			4.01 M		
AP IV DP 578013	ABD 61 DP 578013	ob18	116°13'00" M			4.84 M		
AP IV DP 578013	ABD 60 DP 578013	ob19	102°38'00" M			8.54 M		
AP IV DP 578013	PEG 59 DP 578013	ob20	118°04'00" M			9.65 M		
AP IV DP 578013	PEG 58 DP 578013	ob21	129°45'00" M			11.32 M		
AP IV DP 578013	PEG 57 DP 578013	ob22	138°11'30" M			13.32 M		
AP IV DP 578013	ABD 51 DP 578013	ob23	159°14'00" M			10.98 M		
AP IV DP 578013	ABD 52 DP 578013	ob24	163°49'30" M			10.76 M		
AP IV DP 578013	ABD 49 DP 578013	ob25	144°08'00" M			6.02 M		
AP IV DP 578013	ABD 50 DP 578013	ob26	153°54'00" M			8.44 M		
AP IV DP 578013	PEG 41 DP 578013	ob27	246°43'00" M			3.42 M		
AP IV DP 578013	ABD 42 DP 578013	ob28	243°30'00" M			2.95 M		
AP IV DP 578013	ABD 43 DP 578013	ob29	201°24'00" M			6.39 M		
AP IV DP 578013	ABD 44 DP 578013	ob30	189°58'00" M			11.40 M		
AP IV DP 578013	PEG 26 DP 578013	ob31	91°59'40" M			26.63 M		
LP XIV DP 57330	PEG 40 DP 578013	ob6	221°50'00" M			8.01 M		
UNMK (84) DP 57330	ABD 36 DP 578013	ob143	280°57'30" A	DP 57330	-0°02'30"	37.20 A	DP 57330	Class A

Mark Name	Mark Condition	Description
ALP I DP 578013		Pin in Chan
AP 1 DP 531804		Aluminium Pin in Channel
AP 1A DP 531804		Aluminium Pin in Kerb/Channel

Mark and Vector

Survey Number DP 578013
Meridional Circuit Mount Eden 2000

Mark Name	Mark Condition	Description
AP 1B DP 531804		Aluminium Pin in Kerb/Channel
AP II DP 578013		Pin in Conc Dway
AP III DP 578013		Pin in Conc Dway
AP IV DP 578013		Pin in Conc Dway
IS V DP 578013		0.30 in Yard
IS VB DP 57330		0.30 in Yard
IS VI DP 578013		0.30 in Yard
LP I DP 60174		Lead Plug in Channel
LP XIV DP 57330		Old Plug in Chan
LP XV DP 57330		Lead Plug in Channel
RM XIII DP 57330		ORM in Chan

***** End of Report *****

12
DP 57330

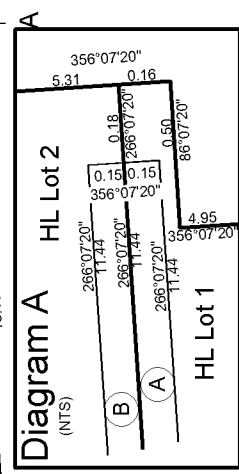
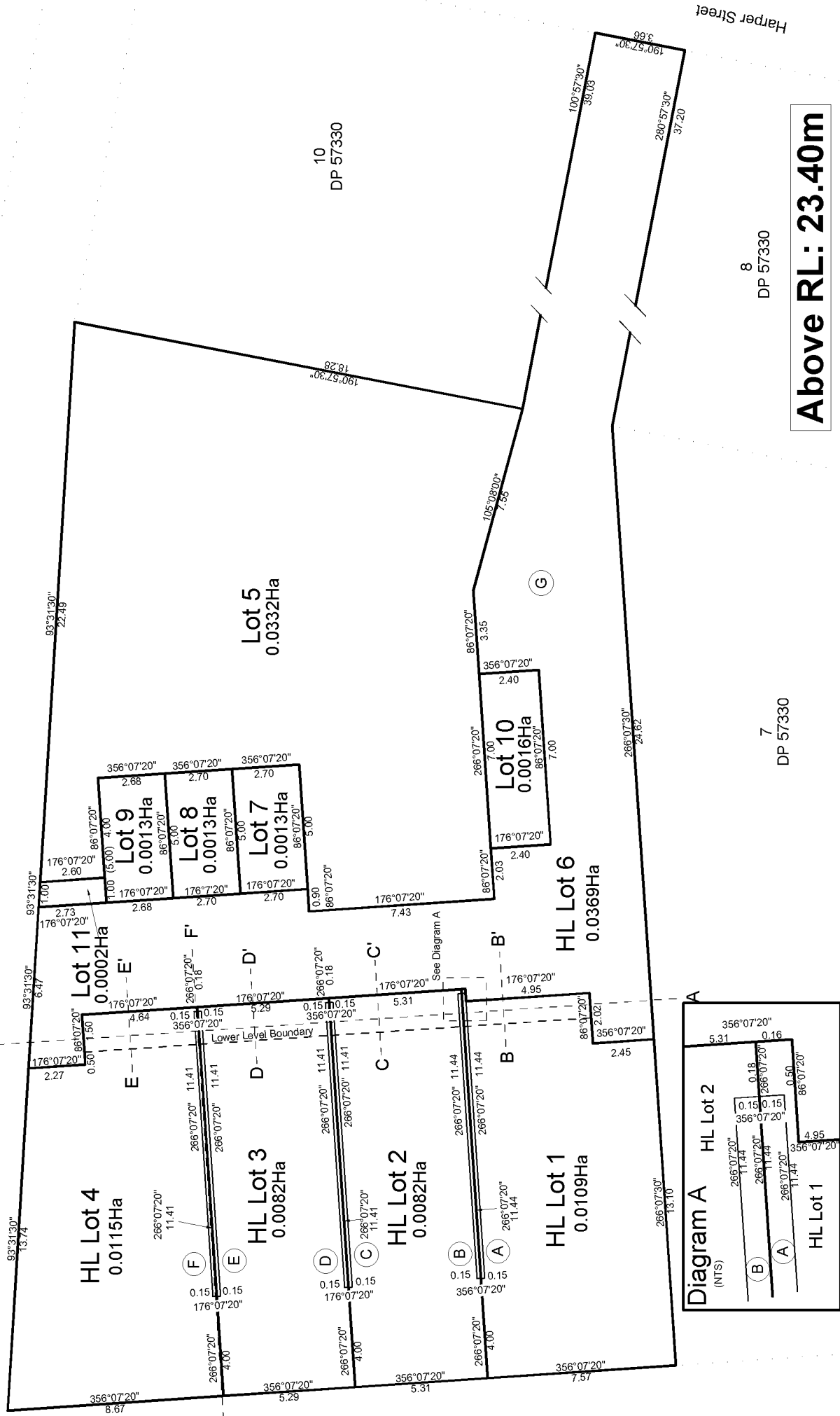
11
DP 57330

10
DP 57330

8
DP 57330

7
DP 57330

Above RL: 23.40m



HL LOTS 1 - 4, LOTS 5, HL LOT 6 &
LOTS 7 - 10 BEING A PROPOSED
SUBDIVISION OF LOT 9 DP 57330

Client	Scale (A3)	Client Reference
Area	21136	1:150
RT	Date	1 OF 2
		17/07/2023

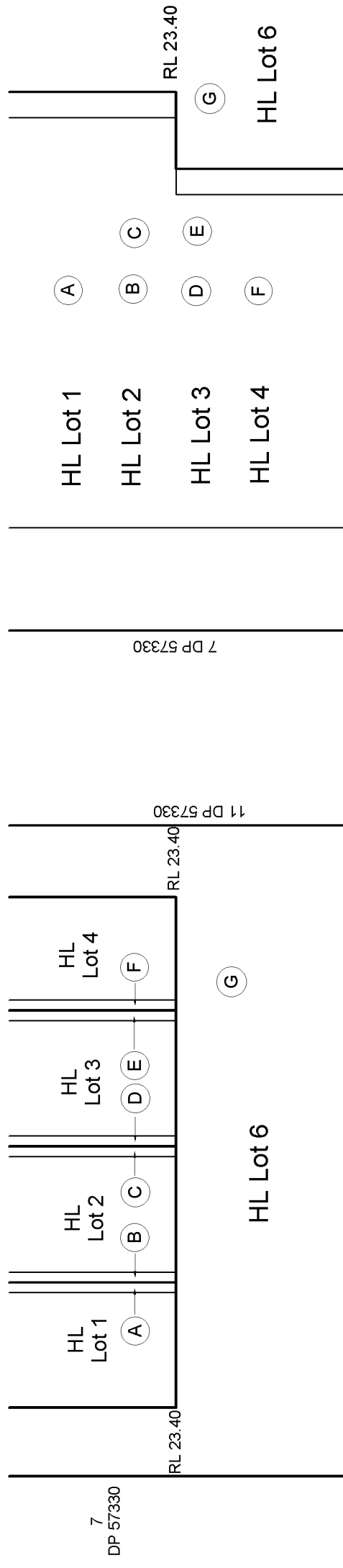
A3



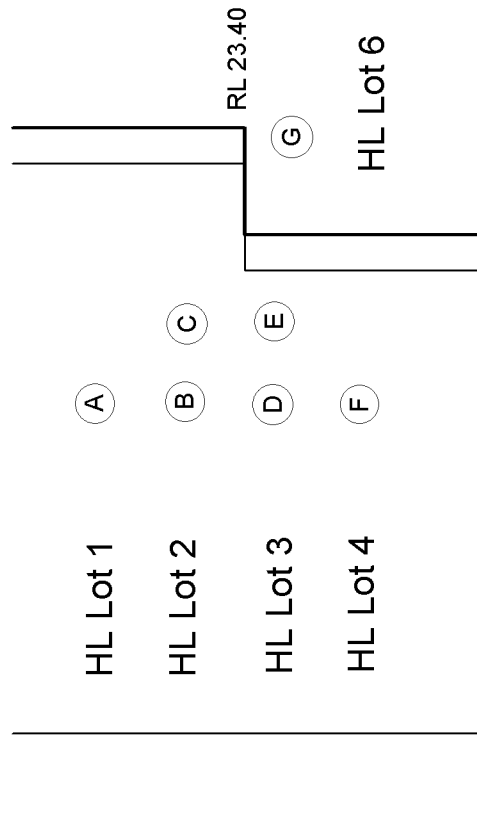
PT LOT 5
DP 36436



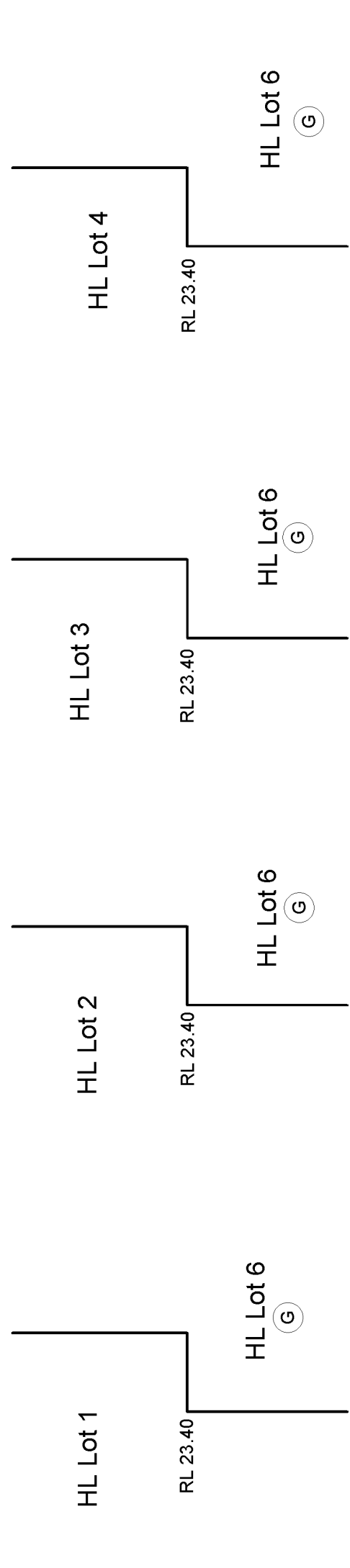
THE CONTENTS AND INFORMATION CONTAINED IN THIS DRAWING ARE THE PROPERTY OF THE DRAWING SURVEYOR. THE USER OF THIS DRAWING SHALL BE RESPONSIBLE FOR OBTAINING ALL NECESSARY PERMITS AND APPROVALS FROM THE APPROPRIATE AUTHORITIES. THE SURVEYOR'S LIABILITY IS LIMITED TO THE PROFESSIONAL SERVICES PROVIDED AND DOES NOT EXTEND TO THE CONSTRUCTION OF THE PROJECT OR TO THE ACCURACY OF THE DATA PROVIDED BY THE CLIENT. THE SURVEYOR'S LIABILITY IS LIMITED TO THE PROFESSIONAL SERVICES PROVIDED AND DOES NOT EXTEND TO THE CONSTRUCTION OF THE PROJECT OR TO THE ACCURACY OF THE DATA PROVIDED BY THE CLIENT.



Cross Section A - A' (NTS)



Typical Cross Section F - F' (NTS)

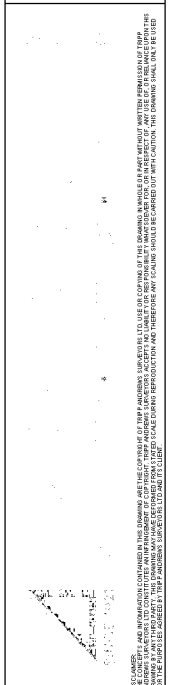


Cross Section B - B' (NTS)

Cross Section C - C' (NTS)

Cross Section D - D' (NTS)

Cross Section E - E' (NTS)



HL LOTS 1 - 4, LOTS 5, HL LOTS 6 &
 LOTS 7 - 10 BEING A PROPOSED
 SUBDIVISION OF LOT 9 DP 57330

Job No:	21136	Scale (A3)	1:150
Date	28/08/2023	2 OF 2	DP 578013

THE CONTENTS AND INFORMATION CONTAINED IN THIS DRAWING ARE THE PROPERTY OF THE DRAWING SURVEYOR. IT IS TO BE USED ONLY FOR THE PROJECT AND SITE SPECIFICALLY IDENTIFIED IN THE DRAWING. NO OTHER USES, REPRODUCTIONS, OR ALTERATIONS ARE PERMITTED WITHOUT THE WRITTEN PERMISSION OF THE DRAWING SURVEYOR. THIS DRAWING IS TO BE STORED IN A SECURE LOCATION AND SHOULD BE KEPT IN A SAFE PLACE. THE DRAWING SURVEYOR SHALL BE RESPONSIBLE FOR THE ACCURACY OF THE INFORMATION CONTAINED HEREIN.

Schedule / Memorandum

Land Registration District

North Auckland

Survey Number

LT 578013

Territorial Authority (the Council)

Auckland Council

Memorandum of Easements

Last Edited: 03 Apr 2023 14:45:59

<u>Purpose</u>	<u>Shown</u>	<u>Burdened Land</u> <u>(Servient Tenement)</u>	<u>Benefited Land</u> <u>(Dominant Tenement)</u>
Party wall	HL A	HL Lot 1	HL Lot 2
	HL B	HL Lot 2	HL Lot 1
	HL C	HL Lot 2	HL Lot 3
	HL D	HL Lot 3	HL Lot 2
	HL E	HL Lot 3	HL Lot 4
	HL F	HL Lot 4	HL Lot 3
Right of Way	HL G	HL Lot 6	Lot 7, Lot 8, Lot 9, Lot 10
Rubbish Bin Bay	H	Lot 11	HL Lot 2, HL Lot 3

Schedule of Easements in Gross

Last Edited: 20 Dec 2022 12:18:18

<u>Purpose</u>	<u>Shown</u>	<u>Burdened Land</u> <u>(Servient Tenement)</u>	<u>Grantee</u>
Right to convey telecommunications	HL G	HL Lot 6	Chorus New Zealand Ltd

Schedule of Easements

Last Edited: 17 Jul 2023 15:38:39

<u>Purpose</u>	<u>Shown</u>	<u>Burdened Land</u> <u>(Servient Tenement)</u>	<u>Benefited Land</u> <u>(Dominant Tenement)</u>
Right to convey telecommunications, electricity, water	HL G	HL Lot 6	HL Lot 1, HL Lot 2, HL Lot 3, HL Lot 4, Lot 5
Right to drain water	HL G	HL Lot 6	HL Lot 1, HL Lot 2, HL Lot 3, HL Lot 4, Lot 5, Lot 7, Lot 8, Lot 9, Lot 10, Lot 11

Amalgamation Conditions

Last Edited: 20 Dec 2022 14:25:13

That Lot 6 DP 578013 be held as to five individual one-fifth shares by the owners of Lots 1 - 5 DP 578013 as tenants in common in the said shares and that individual Records of Title be issued in accordance.

That Lot 11 DP 578013 be held as to two individual two half shares by the owners of Lots 2 & 3 DP 578013 as tenants in common in the said shares and that individual Records of Title be issued in accordance,

That Lot 2 & 7 DP 578013 be held in the same record of title.

That Lot 3 & 8 DP 578013 be held in the same record of title.

That Lot 4 & 9 DP 578013 be held in the same record of title.

That Lot 5 & 10 DP 578013 be held in the same record of title.

Schedule / Memorandum

Land Registration District

North Auckland

Survey Number

LT 578013

Territorial Authority (the Council)

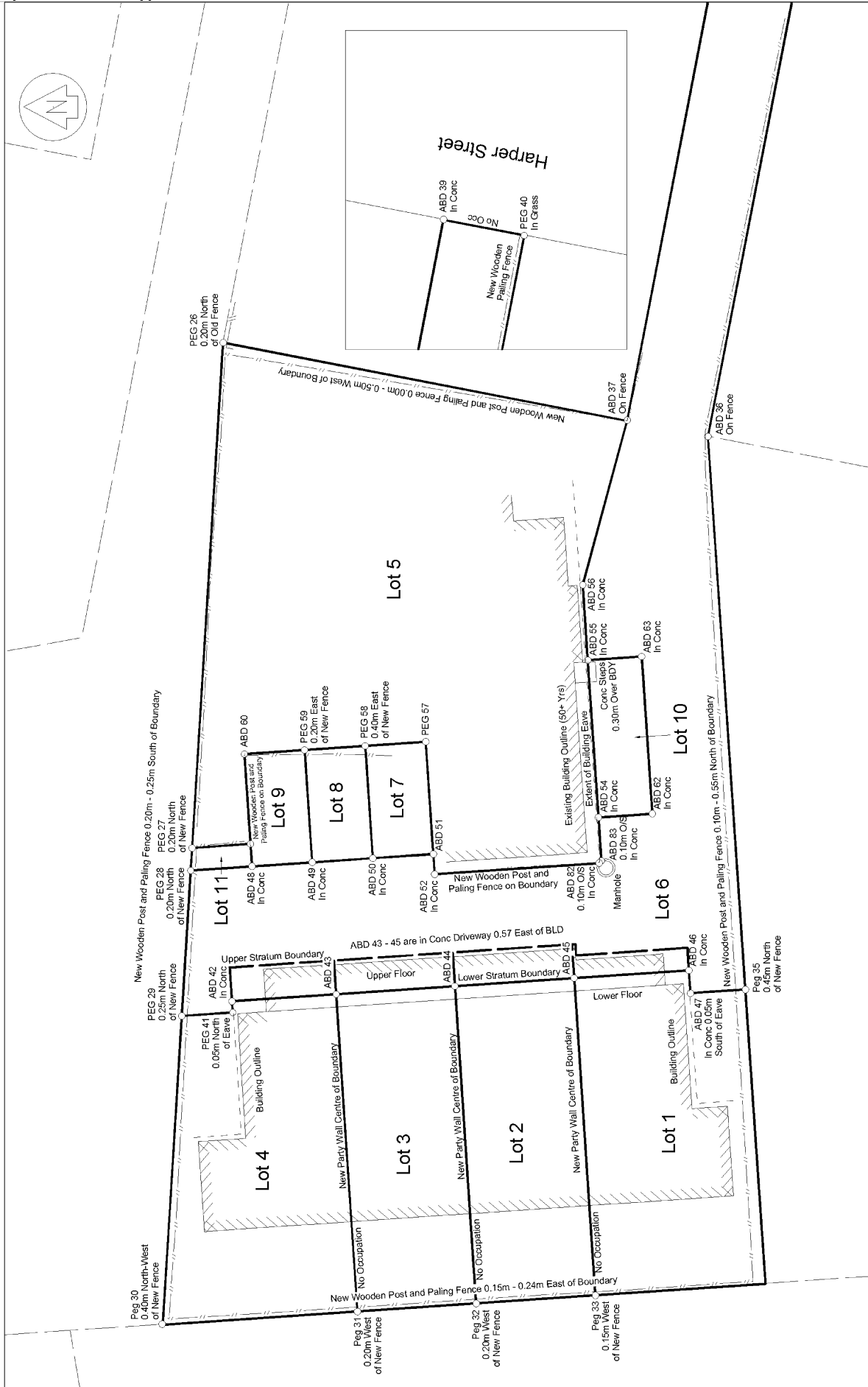
Auckland Council

Notes

Last Edited: 28 Jul 2023 11:41:02

Easements A - G have a RL step in the easements with the change in stratum boundary. Please see attached plan graphic for reference

Occupation Diagram

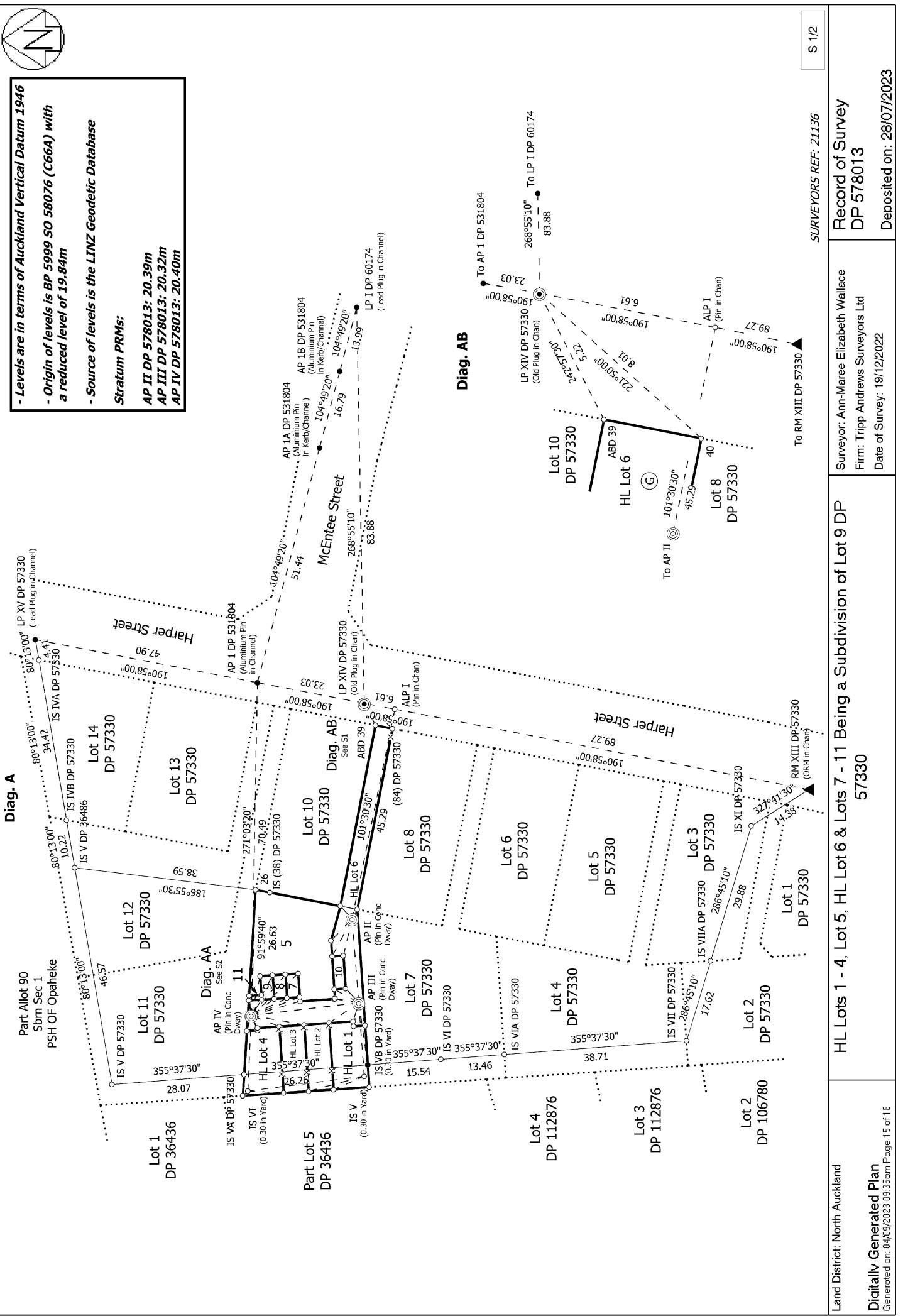


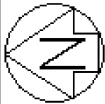
Client Reference		21136	Scale (A3)	1:1000	LINZ DP Number
		Area	N/A	Sheet 1 of 1	DP 578013
RT		See Title	Date	22/02/2023	

Occupation Diagram

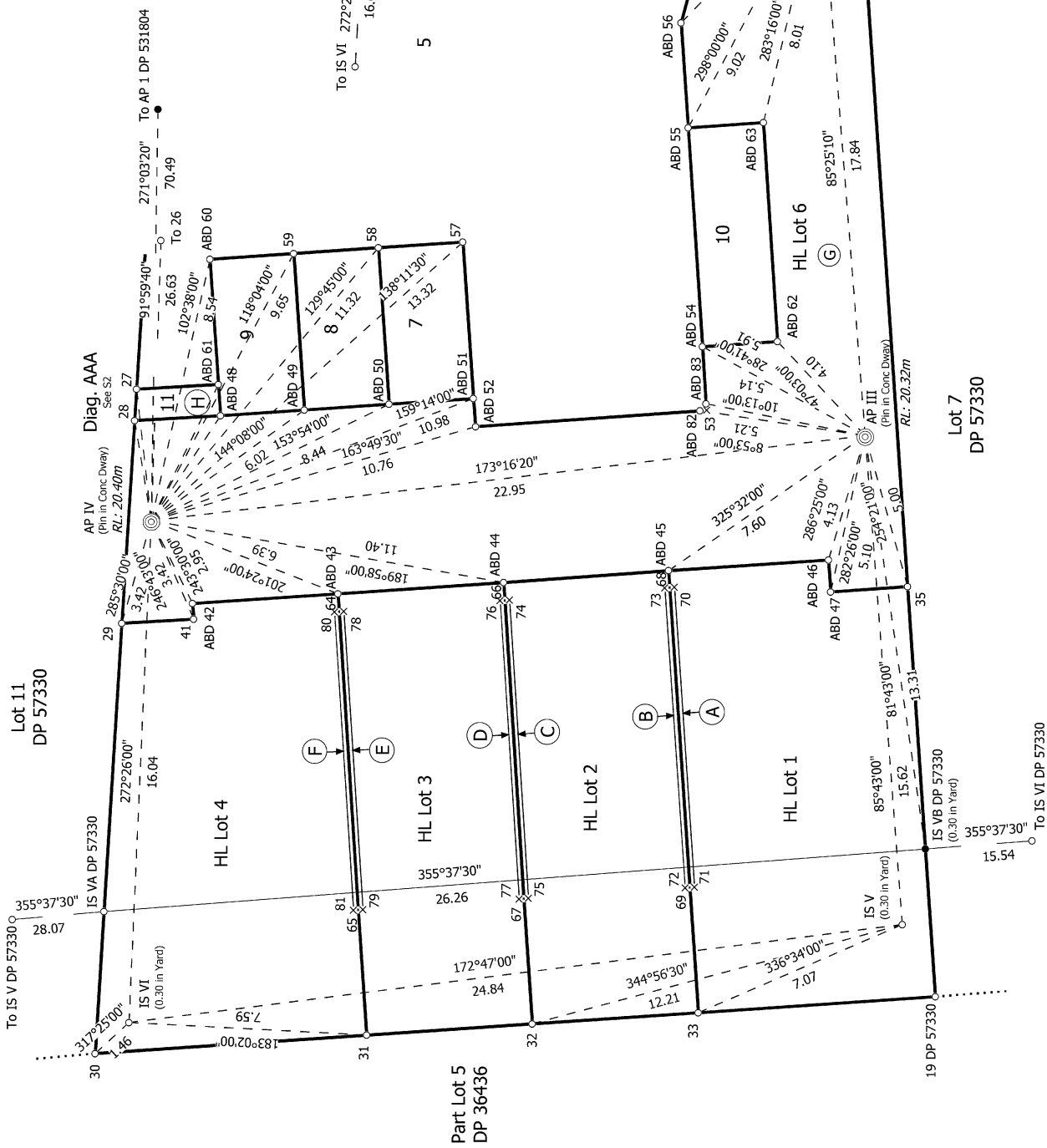


- Levels are in terms of Auckland Vertical Datum 1946
 - Origin of levels is BP 5999 SO 58076 (C66A) with a reduced level of 19.84m
 - Source of levels is the LINZ Geodetic Database
 Stratum PRMs:
 AP II DP 578013: 20.39m
 AP III DP 578013: 20.32m
 AP IV DP 578013: 20.40m

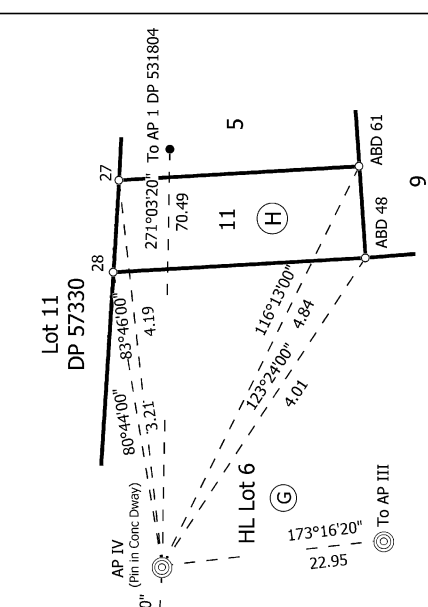




Diag. AA



Diag. AAA



S 2/2

SURVEYORS REF: 21136

Land District: North Auckland

Digitally Generated Plan

Generated on: 04/09/2023 09:35am | Page 16 of 18

HL Lots 1 - 4, Lot 5, HL Lot 6 & Lots 7 - 11 Being a Subdivision of Lot 9 DP 57330

Surveyor: Ann-Maree Elizabeth Wallace
Firm: Tripp Andrews Surveyors Ltd
Date of Survey: 19/12/2022

Record of Survey
DP 578013

Deposited on: 28/07/2023



Lot 12
DP 57330

Lot 11
DP 57330

HL Lot 4
0.0115Ha

Diag. A
See T2

HL Lot 3
0.0082Ha

HL Lot 2
0.0082Ha

HL Lot 1
0.0109Ha

Diag. B
See T2

HL Lot 7
0.0013Ha

HL Lot 8
0.0013Ha

HL Lot 9
0.0013Ha

HL Lot 10
0.0016Ha

HL Lot 6
0.0369Ha

Lot 5
0.0332Ha

Lot 7
DP 57330

Lot 8
DP 57330

Lot 10
DP 57330

Harper Street

NEW RTs ALLOCATED
LOT 1: 1068198
LOT 2: 1068199
LOT 3: 1068200
LOT 4: 1068201
LOT 5: 1068202

RL: Below 23.40m

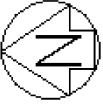
SURVEYORS REF: 21136 T 1/2

Land District: North Auckland
Digitally Generated Plan
Generated on: 04/09/2023 09:35am | Page 17 of 18

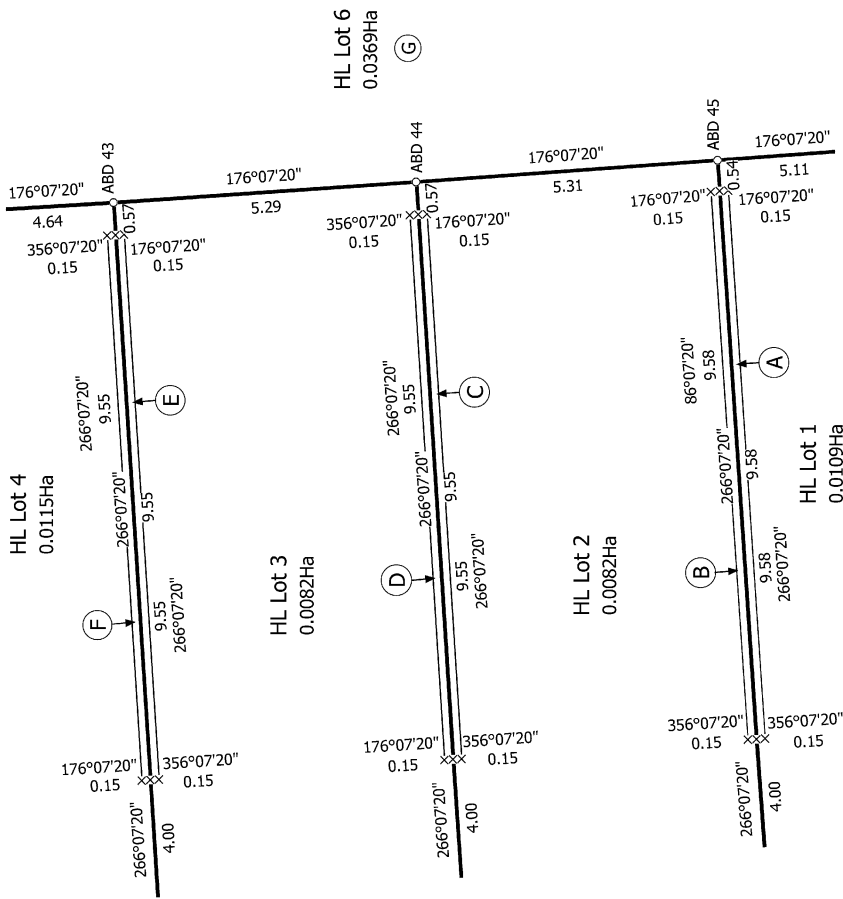
HL Lots 1 - 4, Lot 5, HL Lot 6 & Lots 7 - 11 Being a Subdivision of Lot 9 DP 57330

Surveyor: Ann-Maree Elizabeth Wallace
Firm: Tripp Andrews Surveyors Ltd
Date of Survey: 19/12/2022

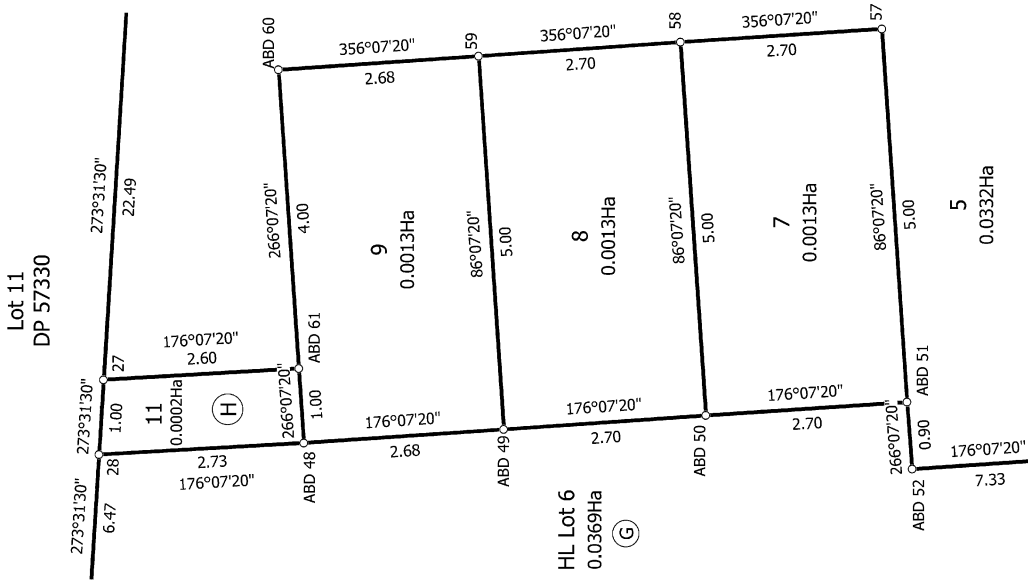
Record of Survey
DP 578013
Deposited on: 28/07/2023



Diag. A



Diag. B



T 2/2

SURVEYORS REF: 21136

Land District: North Auckland	HL Lots 1 - 4, Lot 5, HL Lot 6 & Lots 7 - 11 Being a Subdivision of Lot 9 DP 57330	Surveyor: Ann-Maree Elizabeth Wallace Firm: Tripp Andrews Surveyors Ltd Date of Survey: 19/12/2022	Record of Survey DP 578013
Digitally Generated Plan Generated on: 04/09/2023 09:35am Page 18 of 18		Deposited on: 28/07/2023	