



Record of Survey - DP 577609

Survey Number DP 577609
Surveyor Reference 412348
Surveyor Kevin John Taylor
Survey Firm Survey Gisborne Ltd
Surveyor Declaration I Kevin John Taylor, being a licensed cadastral surveyor, certify that--
(a) this dataset provided by me and its related survey are accurate, correct and in accordance with the Cadastral Survey Act 2002 and Cadastral Survey Rules 2021; and
(b) the survey was undertaken by me or under my personal direction.
Declared on 05 Aug 2022 11:15 AM

Survey Details

Dataset Description Lots 1 and 2 Being a Subdivision of Lot 3 DP 513564
Purpose LT Subdivision
Status Deposited **Type** Survey
Land District Hawkes Bay **Survey Class** Class B
Meridional Circuit Hawkes Bay 2000 **Vertical Datum** None

Survey Dates

Surveyed Date 05/04/2022 **Certified Date** 05/08/2022
Submitted Date 05/08/2022 11:15:54 **Survey Approval Date** 05/08/2022
Deposit Date 07/11/2022

Referenced Surveys

Survey Number	Land District	Bearing Correction
SO 6508	Gisborne	
SO 6595	Gisborne	
SO 8095	Hawkes Bay	0°00'00"
SO 1808	Hawkes Bay	0°47'00"
SO 1808/A	Hawkes Bay	0°47'00"
SO 5524	Hawkes Bay	0°00'00"
SO 5525	Hawkes Bay	0°00'00"
SO 5526	Hawkes Bay	0°00'00"
SO 5795	Hawkes Bay	0°00'00"
SO 5796	Hawkes Bay	0°00'00"
SO 5797	Hawkes Bay	0°00'00"
SO 8335	Hawkes Bay	0°00'00"
DP 28584	Hawkes Bay	0°00'00"
DP 457138	Hawkes Bay	0°00'00"
DP 513564	Hawkes Bay	0°00'00"

Territorial Authorities

Wairoa District



Record of Survey - DP 577609

Comprised In

RT 794069

Created Parcels

Parcels	Parcel Intent	Area	RT Reference
Lot 1 Deposited Plan 577609	Fee Simple Title	5.5560 Ha	1066318
Lot 2 Deposited Plan 577609	Fee Simple Title	782.3905 Ha	1066319
Area A Deposited Plan 577609	Easement		
Area B Deposited Plan 577609	Easement		
Area C Deposited Plan 577609	Easement		
Area D Deposited Plan 577609	Easement		
Area E Deposited Plan 577609	Easement		
Area F Deposited Plan 577609	Easement		
Area G Deposited Plan 577609	Easement		
Area H Deposited Plan 577609	Easement		
Area I Deposited Plan 577609	Easement		
Area J Deposited Plan 577609	Easement		
Area K Deposited Plan 577609	Easement		
Area L Deposited Plan 577609	Easement		
Area M Deposited Plan 577609	Easement		
Area N Deposited Plan 577609	Easement		
Area Z Deposited Plan 577609	Covenant - Land		
Total Area		<hr/> 787.9465 Ha	

Mark and Vector

Survey Number DP 577609
Meridional Circuit Hawkes Bay 2000

From	To	Code	Bearing	Adpt Surv	Bearing Correction	Distance	Adpt Surv	Class
IS XIX DP 513564	IS XX DP 513564	ob0	327°12'00" M			153.09 M		Class B
IS XIX DP 513564	IT I DP 577609	ob1	60°18'30" M			254.82 M		
IT I DP 577609	IT II DP 577609	ob30	95°20'00" M			137.71 M		
IT II DP 577609	IT III DP 577609	ob35	61°30'00" M			68.36 M		
IT III DP 577609	IS XC SO 5796	ob42	319°04'20" M			179.15 M		
IS XC SO 5796	IS IV DP 577609	ob11	235°56'30" M			77.91 M		
IS IV DP 577609	IS V DP 577609	ob48	236°36'30" M			155.56 M		
IS V DP 577609	IS XX DP 513564	ob52	262°57'00" M			191.15 M		
IS XX DP 513564	IT XV DP 513564	ob5	286°40'30" M			146.99 M		
IS XIX DP 513564	IS XVIII DP 513564	ob2	262°40'00" M			130.34 M		
IT II DP 577609	10697	ob36	177°28'39" M			1,390.41 C		
IT II DP 577609	D (Nuhaka North SD)	ob37	227°18'48" M			2,677.40 C		
IT III DP 577609	10697	ob43	179°57'18" M			1,421.69 C		
IT III DP 577609	D (Nuhaka North SD)	ob44	227°39'48" M			2,743.72 C		
IT I DP 577609	IS IV DP 577609	ob31	7°48'10" M			112.58 M		
IT III DP 577609	IT XCIV SO 5796	ob45	105°58'10" M			203.13 M		
IS XIX DP 513564	PEG XIXb DP 513564	ob3	63°08'00" M			72.95 M		
IS XIX DP 513564	POST XIXa DP 513564	ob4	98°52'00" M			23.89 M		
IS XX DP 513564	POST XXb DP 513564	ob6	138°25'00" M			13.32 M		
IT I DP 577609	POST Ia DP 577609	ob32	200°08'00" M			14.23 M		
IT I DP 577609	POST Ib DP 577609	ob33	160°19'00" M			43.47 M		
IT I DP 577609	POST Ic DP 577609	ob34	157°50'30" M			69.43 M		
IT II DP 577609	POST IIa DP 577609	ob38	204°49'00" M			61.12 M		
IT II DP 577609	POST IIb DP 577609	ob39	181°24'00" M			43.64 M		
IT II DP 577609	POST IIc DP 577609	ob40	160°56'00" M			17.71 M		
IT II DP 577609	POST IIId DP 577609	ob41	45°30'00" M			39.62 M		
IT III DP 577609	POST IIIa DP 577609	ob46	149°25'00" M			2.48 M		

Mark and Vector

Survey Number DP 577609

Meridional Circuit Hawkes Bay 2000

From	To	Code	Bearing	Adpt Surv	Bearing Correction	Distance	Adpt Surv	Class
IS XC SO 5796	PEG XCa DP 577609	ob12	237°23'00"	M		5.63 M		
IS XX DP 513564	POST XXa DP 577609	ob7	78°23'30"	M		59.74 M		
IT XV DP 513564	IT XVI DP 513564	ob16	201°06'50"	A DP 513564	0°00'00"	110.19 A DP 513564		
IT XVI DP 513564	IS XVII DP 513564	ob74	161°59'10"	A DP 513564	0°00'00"	104.57 A DP 513564		
IS XVII DP 513564	IS XVIII DP 513564	ob80	81°45'50"	A DP 513564	0°00'00"	102.88 A DP 513564		
IS XX DP 513564	POST XXc DP 513564	ob8	325°58'00"	A DP 513564	0°00'00"	40.20 A DP 513564		
IT XV DP 513564	POST XVc DP 513564	ob17	97°55'00"	A DP 513564	0°00'00"	59.85 A DP 513564		
IT XV DP 513564	POST XVd DP 513564	ob18	29°59'00"	A DP 513564	0°00'00"	10.23 A DP 513564		
IT XV DP 513564	POST XVe DP 513564	ob19	359°25'00"	A DP 513564	0°00'00"	8.67 A DP 513564		
IT XV DP 513564	POST XVf DP 513564	ob20	285°29'00"	A DP 513564	0°00'00"	8.47 A DP 513564		
IT XV DP 513564	POST XVg DP 513564	ob21	273°41'00"	A DP 513564	0°00'00"	11.69 A DP 513564		
IT XV DP 513564	POST XVa DP 513564	ob22	257°43'00"	A DP 513564	0°00'00"	13.64 A DP 513564		
IT XV DP 513564	POST XVb DP 513564	ob23	219°00'30"	A DP 513564	0°00'00"	29.39 A DP 513564		
IT XVI DP 513564	POST XVIa DP 513564	ob75	58°02'00"	A DP 513564	0°00'00"	20.87 A DP 513564		
IT XVI DP 513564	POST XVIb DP 513564	ob76	65°32'30"	A DP 513564	0°00'00"	20.04 A DP 513564		
IT XVI DP 513564	POST XVIc DP 513564	ob77	268°02'00"	A DP 513564	0°00'00"	27.15 A DP 513564		
IT XVI DP 513564	POST XVI d DP 513564	ob78	263°26'30"	A DP 513564	0°00'00"	31.79 A DP 513564		
IT XVI DP 513564	POST XVIe DP 513564	ob79	170°26'30"	A DP 513564	0°00'00"	59.73 A DP 513564		
IS XVII DP 513564	POST XVIIa DP 513564	ob81	210°22'00"	A DP 513564	0°00'00"	8.52 A DP 513564		
IS XVII DP 513564	POST XVIIb DP 513564	ob82	207°30'00"	A DP 513564	0°00'00"	9.63 A DP 513564		
IS XVII DP 513564	POST XVIIc DP 513564	ob83	95°07'00"	A DP 513564	0°00'00"	62.73 A DP 513564		
IS XVIII DP 513564	POST XVIIIa DP 513564	ob24	190°10'00"	A DP 513564	0°00'00"	8.14 A DP 513564		
IS XVIII DP 513564	POST XVIIIb DP 513564	ob25	186°22'00"	A DP 513564	0°00'00"	4.89 A DP 513564		
IS XVIII DP 513564	POST XVIIIc DP 513564	ob26	93°49'30"	A DP 513564	0°00'00"	69.53 A DP 513564		

Mark and Vector

Survey Number DP 577609

Meridional Circuit Hawkes Bay 2000

From	To	Code	Bearing	Adpt Surv	Bearing Correction	Distance	Adpt Surv	Class
10696	IT I SO 8335	ob105	287°16'20"	A SO 8335	0°00'00"	488.83 A	SO 8335	
IT I SO 8335	RM VI SO 5796	ob106	155°01'50"	A SO 8335	0°00'00"	116.60 A	SO 8335	
RM VI SO 5796	IS LXXXIX SO 5796	ob107	250°49'00"	A SO 5796	0°00'00"	78.13 A	SO 5796	
IS LXXXIX SO 5796	IS XC SO 5796	ob108	129°26'00"	A DP 513564	0°00'00"	50.03 A	DP 513564	
IS XC SO 5796	IS XCI SO 5796	ob13	129°26'00"	A SO 5796	0°00'00"	132.45 A	SO 5796	
IS XCI SO 5796	IS XCII SO 5796	ob111	132°54'00"	A SO 5796	0°00'00"	51.76 A	SO 5796	
IS XCII SO 5796	IS XCIII SO 5796	ob115	90°42'00"	A SO 5796	0°00'00"	112.25 A	SO 5796	
IS XCIII SO 5796	IT XCIV SO 5796	ob118	139°31'00"	A SO 5796	0°00'00"	92.74 A	SO 5796	
IT XCIV SO 5796	10696	ob59	33°47'40"	A SO 8335	0°00'00"	251.83 A	SO 8335	
IS LXXXIX SO 5796	POST SO 5796	ob109	346°20'00"	A SO 5796	0°00'00"	1.47 A	SO 5796	
IS LXXXIX SO 5796	POST SO 5796	ob110	108°46'00"	A SO 5796	0°00'00"	25.59 A	SO 5796	
IS XCI SO 5796	POST SO 5796	ob112	0°18'00"	A SO 5796	0°00'00"	15.87 A	SO 5796	
IS XCI SO 5796	POST SO 5796	ob113	187°05'00"	A SO 5796	0°00'00"	17.06 A	SO 5796	
IS XCI SO 5796	PEG SO 5796	ob114	180°00'00"	A SO 5796	0°00'00"	19.98 A	SO 5796	
IS XCII SO 5796	PEG IIIb DP 577609	ob116	233°12'00"	A SO 5796	0°00'00"	22.53 A	SO 5796	
IS XCII SO 5796	POST SO 5796	ob117	69°38'00"	A SO 5796	0°00'00"	10.64 A	SO 5796	
IT III DP 577609	PEG IIIb DP 577609	ob47	62°25'00"	M		5.42 M		
IS XC SO 5796	PEG XCb DP 577609	ob14	224°23'00"	M		5.19 M		
IS XC SO 5796	POST XCc DP 577609	ob15	227°32'00"	M		20.03 M		
IS IV DP 577609	POST IVa DP 577609	ob49	60°12'00"	M		21.27 M		
IS IV DP 577609	POST IVb DP 577609	ob50	351°28'00"	M		2.91 M		
IS IV DP 577609	POST IVc DP 577609	ob51	260°24'00"	M		44.50 M		
IS V DP 577609	PEG Va DP 577609	ob53	28°44'30"	M		83.70 M		
IS V DP 577609	PEG Vb DP 577609	ob54	20°10'30"	M		63.44 M		
IS V DP 577609	PEG Vc DP 577609	ob55	16°23'30"	M		35.62 M		
IS V DP 577609	PEG Vd DP 577609	ob56	332°54'00"	M		12.31 M		
IS V DP 577609	PEG Ve DP 577609	ob57	253°45'30"	M		29.78 M		

Mark and Vector

Survey Number DP 577609

Meridional Circuit Hawkes Bay 2000

From	To	Code	Bearing	Adpt Surv	Bearing Correction	Distance	Adpt Surv	Class
IS V DP 577609	PEG Vf DP 577609	ob58	253°51'30"	M		51.78 M		
IS XX DP 513564	PEG XXd DP 577609	ob9	84°14'30"	M		90.42 M		
IS XX DP 513564	PEG XXe DP 577609	ob10	89°11'00"	M		67.71 M		
PEG XIXb DP 513564	PEG XXe DP 577609	ob60	320°17'00"	A DP 513564	0°00'00"	125.68 A	DP 513564	Class B
PEG XXe DP 577609	UNMK DP 513564	ob139	320°17'00"	A DP 513564	0°00'00"	6.37 A	DP 513564	Class B
UNMK DP 513564	POST XXa DP 577609	ob140	320°17'00"	A DP 513564	0°00'00"	8.00 A	DP 513564	Class B
POST XXa DP 577609	POST XXb DP 513564	ob73	246°07'30"	A DP 513564	0°00'00"	54.32 A	DP 513564	Class B
POST XXb DP 513564	POST XXc DP 513564	ob63	324°05'30"	A DP 513564	0°00'00"	53.43 A	DP 513564	Class B
POST XXc DP 513564	POST XVc DP 513564	ob84	270°36'00"	A DP 513564	0°00'00"	59.03 A	DP 513564	Class B
POST XVc DP 513564	POST XVd DP 513564	ob85	287°31'30"	A DP 513564	0°00'00"	56.80 A	DP 513564	Class B
POST XVd DP 513564	POST XVe DP 513564	ob86	267°54'00"	A DP 513564	0°00'00"	5.20 A	DP 513564	Class B
POST XVe DP 513564	POST XVf DP 513564	ob87	231°34'00"	A DP 513564	0°00'00"	10.31 A	DP 513564	Class B
POST XVf DP 513564	POST XVg DP 513564	ob88	246°41'00"	A DP 513564	0°00'00"	3.81 A	DP 513564	Class B
POST XVg DP 513564	POST XVa DP 513564	ob89	204°28'00"	A DP 513564	0°00'00"	4.01 A	DP 513564	Class B
POST XVa DP 513564	POST XVb DP 513564	ob90	194°32'00"	A DP 457138	0°00'00"	20.59 A	DP 457138	Class B
POST XVb DP 513564	POST XVIa DP 513564	ob91	182°54'00"	A DP 457138	0°00'00"	69.00 A	DP 457138	Class B
POST XVIa DP 513564	POST XVIb DP 513564	ob92	168°50'00"	A DP 457138	0°00'00"	2.80 A	DP 457138	Class B
POST XVIb DP 513564	POST XVIc DP 513564	ob93	258°30'00"	A DP 457138	0°00'00"	46.31 A	DP 457138	Class B
POST XVIc DP 513564	POST XVIId DP 513564	ob94	238°46'00"	A DP 457138	0°00'00"	5.21 A	DP 457138	Class B
POST XVIId DP 513564	POST XVIe DP 513564	ob95	143°05'30"	A DP 457138	0°00'00"	69.12 A	DP 457138	Class B
POST XVIe DP 513564	POST XVIIa DP 513564	ob96	159°17'30"	A DP 457138	0°00'00"	51.20 A	DP 457138	Class B
POST XVIIa DP 513564	POST XVIIb DP 513564	ob97	186°44'00"	A DP 457138	0°00'00"	1.20 A	DP 513564	Class B
POST XVIIb DP 513564	POST XVIIc DP 513564	ob98	87°28'30"	A DP 513564	0°00'00"	66.99 A	DP 513564	Class B
POST XVIIc DP 513564	POST XVIIIa DP 513564	ob100	72°00'00"	A DP 513564	0°00'00"	39.85 A	DP 513564	Class B

Mark and Vector

Survey Number DP 577609

Meridional Circuit Hawkes Bay 2000

From	To	Code	Bearing	Adpt Surv	Bearing Correction	Distance	Adpt Surv	Class
POST XVIIIa DP 513564	POST XVIIIb DP 513564	ob101	15°51'00"	A DP 513564	0°00'00"	3.28 A	DP 513564	Class B
POST XVIIIb DP 513564	POST XVIIIc DP 513564	ob102	89°49'00"	A DP 513564	0°00'00"	69.92 A	DP 513564	Class B
POST XVIIIc DP 513564	POST XIXa DP 513564	ob103	78°06'00"	A DP 513564	0°00'00"	85.34 A	DP 513564	Class B
POST XIXa DP 513564	PEG XIXb DP 513564	ob62	48°32'00"	A DP 513564	0°00'00"	55.34 A	DP 513564	Class B
PEG XIXb DP 513564	POST Ia DP 577609	ob61	62°10'30"	C		171.18 C		Class B
POST Ia DP 577609	POST Ib DP 577609	ob64	144°41'00"	C		33.79 C		Class B
POST Ib DP 577609	POST Ic DP 577609	ob65	153°42'00"	C		26.07 C		Class B
POST Ic DP 577609	POST IIa DP 577609	ob66	92°40'00"	C		85.37 C		Class B
POST IIa DP 577609	POST IIb DP 577609	ob67	64°16'00"	C		27.29 C		Class B
POST IIb DP 577609	POST IIc DP 577609	ob68	14°18'00"	C		27.75 C		Class B
POST IIc DP 577609	POST IId DP 577609	ob69	26°48'00"	C		49.86 C		Class B
POST IId DP 577609	POST IIIa DP 577609	ob70	85°18'00"	C		33.19 C		Class B
POST IIIa DP 577609	PEG IIIb DP 577609	ob71	37°21'00"	C		5.84 C		Class B
PEG IIIb DP 577609	PEG SO 5796	ob124	325°20'00"	A SO 5796	0°00'00"	34.94 A	SO 5796	Class B
PEG SO 5796	POST SO 5796	ob123	325°20'00"	A SO 5796	0°00'00"	3.70 A	SO 5796	Class B
POST SO 5796	POST SO 5796	ob122	3°49'00"	A SO 5796	0°00'00"	32.89 A	SO 5796	Class B
POST SO 5796	PEG XCb DP 577609	ob121	301°20'00"	A SO 5796	0°00'00"	124.11 A	DP 513564	Class B
PEG XCb DP 577609	POST XCc DP 577609	ob126	228°38'00"	A DP 513564	0°00'00"	14.85 A	DP 513564	Class B
POST XCc DP 577609	POST IVa DP 577609	ob128	238°02'00"	A DP 513564	0°00'00"	36.90 A	DP 513564	Class B
POST IVa DP 577609	POST IVb DP 577609	ob129	247°50'00"	A DP 513564	0°00'00"	20.40 A	DP 513564	Class B
POST IVb DP 577609	POST IVc DP 577609	ob130	256°40'00"	A DP 513564	0°00'00"	44.65 A	DP 513564	Class B
POST IVc DP 577609	PEG Va DP 577609	ob131	264°00'00"	A DP 513564	0°00'00"	46.00 A	DP 513564	Class B
PEG Va DP 577609	PEG Vb DP 577609	ob132	233°00'00"	A DP 513564	0°00'00"	23.00 A	DP 513564	Class B
PEG Vb DP 577609	PEG Vc DP 577609	ob133	205°00'00"	A DP 513564	0°00'00"	28.00 A	DP 513564	Class B
PEG Vc DP 577609	PEG Vd DP 577609	ob134	214°00'00"	A DP 513564	0°00'00"	28.00 A	DP 513564	Class B

Mark and Vector

Survey Number DP 577609

Meridional Circuit Hawkes Bay 2000

From	To	Code	Bearing	Adpt Surv	Bearing Correction	Distance	Adpt Surv	Class
PEG Vd DP 577609	PEG Ve DP 577609	ob135	230°00'00"	A DP 513564	0°00'00"	30.00 A	DP 513564	Class B
PEG Ve DP 577609	PEG Vf DP 577609	ob136	254°00'00"	A DP 513564	0°00'00"	22.00 A	DP 513564	Class B
PEG Vf DP 577609	PEG XXd DP 577609	ob137	270°00'00"	A DP 513564	0°00'00"	50.00 A	DP 513564	Class B
PEG XXd DP 577609	PEG XXe DP 577609	ob138	249°59'00"	A DP 513564	0°00'00"	23.69 A	DP 513564	Class B
PEG XCb DP 577609	PEG XCa DP 577609	ob127	301°20'00"	A SO 5796	0°00'00"	1.30 A	DP 513564	Class B
PEG XCa DP 577609	UNMK DP 513564	ob72	340°00'00"	A SO 5796	0°00'00"	5.11 A	DP 513564	Class B
UNMK DP 513564	POST SO 5796	ob142	340°00'00"	A SO 5796	0°00'00"	23.19 A	DP 513564	Class B
POST SO 5796	POST SO 5796	ob120	291°28'00"	A SO 5796	0°00'00"	26.39 A	SO 5796	Class B
POST SO 5796	POST SO 5796	ob119	354°41'00"	A SO 5796	0°00'00"	62.16 A	SO 5796	Class B
POST SO 5796	POST SO 5796	ob428	328°17'00"	A SO 5796	0°00'00"	55.26 A	SO 5796	Class B
POST SO 5796	POST SO 5796	ob429	354°35'00"	A SO 5796	0°00'00"	99.06 A	SO 5796	Class B
POST SO 5796	POST SO 5796	ob143	5°37'00"	A SO 5796	0°00'00"	27.12 A	SO 5796	Class B
POST SO 5796	POST SO 5797	ob144	16°51'30"	A SO 5797	0°00'00"	149.19 A	SO 5797	Class B
POST SO 5797	POST SO 5797	ob145	350°46'00"	A SO 5797	0°00'00"	56.61 A	SO 5797	Class B
POST SO 5797	POST SO 5797	ob146	58°41'00"	A SO 5797	0°00'00"	48.82 A	SO 5797	Class B
POST SO 5797	POST SO 5797	ob147	19°32'00"	A SO 5797	0°00'00"	79.44 A	SO 5797	Class B
POST SO 5797	POST SO 5797	ob148	8°35'00"	A SO 5797	0°00'00"	101.87 A	SO 5797	Class B
POST SO 5797	POST SO 5797	ob149	29°39'00"	A SO 5797	0°00'00"	61.30 A	SO 5797	Class B
POST SO 5797	POST SO 5797	ob150	301°36'00"	A SO 5797	0°00'00"	11.59 A	SO 5797	Class B
POST SO 5797	POST SO 5797	ob151	10°43'00"	A SO 5797	0°00'00"	13.20 A	SO 5797	Class B
POST SO 5797	POST SO 5797	ob152	17°35'00"	A SO 5797	0°00'00"	156.81 A	SO 5797	Class B
UNMK DP 513564	UNMK DP 513564	ob141	69°59'00"	A DP 513564	0°00'00"	26.90 A	DP 513564	Class B
UNMK DP 513564	UNMK DP 513564	ob153	90°00'00"	A DP 513564	0°00'00"	50.22 A	DP 513564	Class B
UNMK DP 513564	UNMK DP 513564	ob154	74°00'00"	A DP 513564	0°00'00"	19.88 A	DP 513564	Class B
UNMK DP 513564	UNMK DP 513564	ob155	50°00'00"	A DP 513564	0°00'00"	27.88 A	DP 513564	Class B
UNMK DP 513564	UNMK DP 513564	ob156	34°00'00"	A DP 513564	0°00'00"	26.68 A	DP 513564	Class B
UNMK DP 513564	UNMK DP 513564	ob157	25°00'00"	A DP 513564	0°00'00"	29.02 A	DP 513564	Class B
UNMK DP 513564	UNMK DP 513564	ob158	53°00'00"	A DP 513564	0°00'00"	26.16 A	DP 513564	Class B
UNMK DP 513564	UNMK DP 513564	ob159	84°00'00"	A DP 513564	0°00'00"	47.28 A	DP 513564	Class B
UNMK DP 513564	UNMK DP 513564	ob160	76°40'00"	A DP 513564	0°00'00"	43.80 A	DP 513564	Class B

Mark and Vector

Survey Number DP 577609

Meridional Circuit Hawkes Bay 2000

From	To	Code	Bearing	Adpt Surv	Bearing Correction	Distance	Adpt Surv	Class
UNMK DP 513564	UNMK DP 513564	ob161	67°50'00"	A DP 513564	0°00'00"	19.42 A	DP 513564	Class B
UNMK DP 513564	UNMK DP 513564	ob162	58°02'00"	A DP 513564	0°00'00"	35.89 A	DP 513564	Class B
UNMK DP 513564	UNMK DP 513564	ob163	48°38'00"	A DP 513564	0°00'00"	15.83 A	DP 513564	Class B
D (Nuhaka North SD)	UNMK DP 28584	ob29	90°54'44"	A DP 28584	0°00'00"	216.45 A	DP 28584	Class B
UNMK DP 28584	UNMK DP 28584	ob164	90°54'44"	A DP 28584	0°00'00"	7.45 A	DP 28584	Class B
UNMK DP 28584	UNMK DP 28584	ob167	90°54'44"	A DP 28584	0°00'00"	3.65 A	DP 28584	Class B
UNMK DP 28584	PEG SO 5524	ob168	90°54'44"	A DP 28584	0°00'00"	704.82 A	DP 28584	Class B
PEG SO 5524	PEG SO 5524	ob169	359°22'00"	A SO 5524	0°00'00"	73.81 A	SO 5524	Class B
PEG SO 5524	PEG SO 5525	ob170	26°43'30"	A SO 5525	0°00'00"	234.64 A	SO 5525	Class B
PEG SO 5525	PEG SO 5525	ob171	356°17'00"	A SO 5525	0°00'00"	87.81 A	SO 5525	Class B
PEG SO 5525	PEG SO 5525	ob172	359°44'00"	A SO 5525	0°00'00"	132.09 A	SO 5525	Class B
PEG SO 5525	UNMK DP 28584	ob173	16°26'00"	A SO 5525	0°00'00"	49.55 A	DP 28584	Class B
UNMK DP 28584	UNMK DP 28584	ob174	16°26'00"	A SO 5525	0°00'00"	6.94 A	DP 28584	Class B
UNMK DP 28584	PEG SO 5525	ob176	16°26'00"	A SO 5525	0°00'00"	16.43 A	DP 28584	Class B
PEG SO 5525	UNMK DP 28584	ob177	53°52'00"	A SO 5525	0°00'00"	52.24 A	DP 28584	Class B
UNMK DP 28584	PEG SO 5525	ob178	53°52'00"	A SO 5525	0°00'00"	7.35 A	DP 28584	Class B
PEG SO 5525	PEG LVIa DP 513564	ob180	98°27'00"	A SO 5525	0°00'00"	3.55 A	DP 28584	Class B
PEG LVIa DP 513564	PEG XIIe DP 513564	ob181	326°52'00"	A DP 513564	0°00'00"	49.70 A	DP 513564	Class B
PEG XIIe DP 513564	PEG XIIId DP 513564	ob182	340°10'30"	A DP 513564	0°00'00"	62.41 A	DP 513564	Class B
PEG XIIId DP 513564	PEG XIIc DP 513564	ob183	261°13'00"	A DP 513564	0°00'00"	9.04 A	DP 513564	Class B
PEG XIIc DP 513564	POST XIIb DP 513564	ob184	199°51'00"	A DP 513564	0°00'00"	27.68 A	DP 513564	Class B
POST XIIb DP 513564	POST XIIa DP 513564	ob185	184°07'00"	A DP 513564	0°00'00"	22.09 A	DP 513564	Class B
POST XIIa DP 513564	POST XIa DP 513564	ob186	252°48'00"	A DP 513564	0°00'00"	19.86 A	DP 513564	Class B
POST XIa DP 513564	POST Xc DP 513564	ob187	268°19'00"	A DP 513564	0°00'00"	5.28 A	DP 513564	Class B
POST Xc DP 513564	PEG Xb DP 513564	ob188	284°09'00"	A DP 513564	0°00'00"	17.09 A	DP 513564	Class B

Mark and Vector

Survey Number DP 577609

Meridional Circuit Hawkes Bay 2000

From	To	Code	Bearing	Adpt Surv	Bearing Correction	Distance	Adpt Surv	Class
PEG Xb DP 513564	PEG Xa DP 513564	ob189	287°44'00"	A DP 513564	0°00'00"	18.55 A	DP 513564	Class B
PEG Xa DP 513564	PEG IXb DP 513564	ob190	323°36'00"	A DP 513564	0°00'00"	79.62 A	DP 513564	Class B
PEG IXb DP 513564	PEG IXa DP 513564	ob191	322°58'00"	A DP 513564	0°00'00"	46.35 A	DP 513564	Class B
PEG IXa DP 513564	PEG VIIIb DP 513564	ob192	334°13'00"	A DP 513564	0°00'00"	72.78 A	DP 513564	Class B
PEG VIIIb DP 513564	POST VIIIa DP 513564	ob193	53°09'00"	A DP 513564	0°00'00"	9.50 A	DP 513564	Class B
POST VIIIa DP 513564	POST VIIc DP 513564	ob194	24°42'30"	A DP 513564	0°00'00"	90.33 A	DP 513564	Class B
POST VIIc DP 513564	POST VIIb DP 513564	ob195	92°12'00"	A DP 513564	0°00'00"	29.27 A	DP 513564	Class B
POST VIIb DP 513564	POST VIIa DP 513564	ob196	25°58'00"	A DP 513564	0°00'00"	26.15 A	DP 513564	Class B
POST VIIa DP 513564	POST VIh DP 513564	ob197	76°04'00"	A DP 513564	0°00'00"	32.17 A	DP 513564	Class B
POST VIh DP 513564	POST VIg DP 513564	ob198	14°35'00"	A DP 513564	0°00'00"	15.27 A	DP 513564	Class B
POST VIg DP 513564	POST Vif DP 513564	ob199	357°08'00"	A DP 513564	0°00'00"	3.81 A	DP 513564	Class B
POST Vif DP 513564	POST VIf DP 513564	ob200	23°44'00"	A DP 513564	0°00'00"	15.16 A	DP 513564	Class B
POST VIf DP 513564	PEG VIId DP 513564	ob201	36°19'00"	A DP 513564	0°00'00"	17.76 A	DP 513564	Class B
PEG VIId DP 513564	POST VIc DP 513564	ob202	116°58'00"	A DP 513564	0°00'00"	22.99 A	DP 513564	Class B
POST VIc DP 513564	POST VIb DP 513564	ob203	81°28'00"	A DP 513564	0°00'00"	22.45 A	DP 513564	Class B
POST VIb DP 513564	POST VIa DP 513564	ob204	134°12'00"	A DP 513564	0°00'00"	21.28 A	DP 513564	Class B
POST VIa DP 513564	POST Vb DP 513564	ob205	117°40'00"	A DP 513564	0°00'00"	16.04 A	DP 513564	Class B
POST Vb DP 513564	POST Va DP 513564	ob206	55°04'30"	A DP 513564	0°00'00"	65.56 A	DP 513564	Class B
POST Va DP 513564	POST IVj DP 513564	ob207	60°25'00"	A DP 513564	0°00'00"	48.84 A	DP 513564	Class B
POST IVj DP 513564	POST IVi DP 513564	ob208	99°25'00"	A DP 513564	0°00'00"	20.15 A	DP 513564	Class B
POST IVi DP 513564	POST IVh DP 513564	ob209	128°02'00"	A DP 513564	0°00'00"	33.58 A	DP 513564	Class B
POST IVh DP 513564	POST IVg DP 513564	ob210	136°22'00"	A DP 513564	0°00'00"	62.02 A	DP 513564	Class B
POST IVg DP 513564	POST IVf DP 513564	ob211	90°42'00"	A DP 513564	0°00'00"	86.14 A	DP 513564	Class B
POST IVf DP 513564	POST IVe DP 513564	ob212	107°39'30"	A DP 513564	0°00'00"	61.37 A	DP 513564	Class B

Mark and Vector

Survey Number DP 577609

Meridional Circuit Hawkes Bay 2000

From	To	Code	Bearing	Adpt Surv	Bearing Correction	Distance	Adpt Surv	Class
POST IVe DP 513564	PEG IVd DP 513564	ob213	108°03'00"	A DP 513564	0°00'00"	27.20 A	DP 513564	Class B
PEG IVd DP 513564	POST IVc DP 513564	ob214	186°02'00"	A DP 513564	0°00'00"	24.08 A	DP 513564	Class B
POST IVc DP 513564	POST IVb DP 513564	ob215	181°27'00"	A DP 513564	0°00'00"	3.78 A	DP 513564	Class B
POST IVb DP 513564	POST IVa DP 513564	ob216	168°27'00"	A DP 513564	0°00'00"	15.58 A	DP 513564	Class B
POST IVa DP 513564	POST IIIb DP 513564	ob217	167°11'30"	A DP 513564	0°00'00"	73.17 A	DP 513564	Class B
POST IIIb DP 513564	POST IIIa DP 513564	ob218	186°13'00"	A DP 513564	0°00'00"	38.34 A	DP 513564	Class B
POST IIIa DP 513564	POST IId DP 513564	ob219	212°11'00"	A DP 513564	0°00'00"	3.80 A	DP 513564	Class B
POST IId DP 513564	POST IIc DP 513564	ob220	171°30'00"	A DP 513564	0°00'00"	16.16 A	DP 513564	Class B
POST IIc DP 513564	PEG IIb DP 513564	ob221	185°44'30"	A DP 513564	0°00'00"	68.08 A	DP 513564	Class B
PEG IIb DP 513564	POST IIa DP 513564	ob222	153°22'00"	A DP 513564	0°00'00"	18.84 A	DP 513564	Class B
POST IIa DP 513564	POST Ie DP 513564	ob223	173°33'00"	A DP 513564	0°00'00"	41.75 A	DP 513564	Class B
POST Ie DP 513564	POST Id DP 513564	ob224	195°50'30"	A DP 513564	0°00'00"	57.97 A	DP 513564	Class B
POST Id DP 513564	POST Ic DP 513564	ob225	142°23'00"	A DP 513564	0°00'00"	30.68 A	DP 513564	Class B
POST Ic DP 513564	POST Ib DP 513564	ob226	144°35'00"	A DP 513564	0°00'00"	33.45 A	DP 513564	Class B
POST Ib DP 513564	POST Ia DP 513564	ob227	121°32'00"	A DP 513564	0°00'00"	11.75 A	DP 513564	Class B
POST Ia DP 513564	PEG If DP 513564	ob228	177°39'00"	A DP 513564	0°00'00"	12.40 A	DP 513564	Class B
PEG If DP 513564	PEG SO 5525	ob229	104°07'00"	A SO 5525	0°00'00"	14.00 A	DP 513564	Class B
PEG SO 5525	PEG SO 5525	ob230	73°49'00"	A SO 5525	0°00'00"	90.69 A	SO 5525	Class B
PEG SO 5525	POST SO 5525	ob231	51°35'00"	A SO 5525	0°00'00"	92.90 A	SO 5525	Class B
POST SO 5525	POST (195) SO 5525	ob232	93°14'00"	A SO 5525	0°00'00"	67.39 A	SO 5525	Class B
POST (195) SO 5525	POST (192) SO 5525	ob233	72°47'00"	A SO 5525	0°00'00"	115.91 A	SO 5525	Class B
POST (192) SO 5525	POST (191) SO 5525	ob234	97°35'00"	A SO 5525	0°00'00"	27.30 A	SO 5525	Class B
POST (191) SO 5525	POST (190) SO 5525	ob235	136°48'00"	A SO 5525	0°00'00"	37.76 A	SO 5525	Class B
POST (190) SO 5525	POST (186) SO 5525	ob236	102°59'00"	A SO 5525	0°00'00"	128.24 A	SO 5525	Class B
POST (186) SO 5525	PEG (183) SO 5526	ob237	99°14'00"	A SO 5526	0°00'00"	90.93 A	SO 5526	Class B

Mark and Vector

Survey Number DP 577609

Meridional Circuit Hawkes Bay 2000

From	To	Code	Bearing	Adpt Surv	Bearing Correction	Distance	Adpt Surv	Class
PEG (183) SO 5526	PEG (179) SO 5526	ob238	70°01'00"	A SO 5526	0°00'00"	148.40 A	SO 5526	Class B
PEG (179) SO 5526	POST (178) SO 5795	ob239	30°46'00"	A SO 5795	0°00'00"	119.47 A	SO 5795	Class B
POST (178) SO 5795	POST (177) SO 5795	ob240	344°23'00"	A SO 5795	0°00'00"	49.02 A	SO 5795	Class B
POST (177) SO 5795	POST (176) SO 5795	ob241	15°47'00"	A SO 5795	0°00'00"	138.62 A	SO 5795	Class B
POST (176) SO 5795	POST (175) SO 5795	ob242	12°19'00"	A SO 5795	0°00'00"	100.28 A	SO 5795	Class B
POST (175) SO 5795	PEG (174) SO 5795	ob243	350°05'00"	A SO 5795	0°00'00"	28.20 A	SO 5795	Class B
PEG (174) SO 5795	POST SO 5795	ob244	350°05'00"	A SO 5795	0°00'00"	27.20 A	SO 5795	Class B
POST SO 5795	POST SO 5795	ob245	6°50'00"	A SO 5795	0°00'00"	97.47 A	SO 5795	Class B
POST SO 5795	POST SO 5795	ob246	349°41'30"	A SO 5795	0°00'00"	85.32 A	SO 5795	Class B
POST SO 5795	POST SO 5795	ob247	354°51'00"	A SO 5795	0°00'00"	38.10 A	SO 5795	Class B
POST SO 5795	POST SO 5795	ob248	356°39'00"	A SO 5795	0°00'00"	57.47 A	SO 5795	Class B
POST SO 5795	POST SO 5796	ob249	346°15'00"	A SO 5795	0°00'00"	129.99 A	SO 5795	Class B
POST SO 5796	POST SO 5796	ob250	346°58'30"	A SO 5796	0°00'00"	188.07 A	SO 5796	Class B
POST SO 5796	POST SO 5796	ob251	350°26'30"	A SO 5796	0°00'00"	121.06 A	SO 5796	Class B
POST SO 5796	POST SO 5796	ob252	341°09'00"	A SO 5796	0°00'00"	60.07 A	SO 5796	Class B
POST SO 5796	POST SO 5796	ob253	319°56'00"	A SO 5796	0°00'00"	99.76 A	SO 5796	Class B
POST SO 5796	POST SO 5796	ob254	280°07'00"	A SO 5796	0°00'00"	95.90 A	SO 5796	Class B
POST SO 5796	PEG IIIb DP 577609	ob125	238°28'00"	A SO 5796	0°00'00"	32.87 A	SO 5796	Class B
UNMK DP 28584	UNMK DP 28584	ob179	326°52'00"	A DP 28584	0°00'00"	44.20 A	DP 28584	Class B
UNMK DP 28584	UNMK DP 513564	ob255	326°52'00"	A DP 28584	0°00'00"	15.96 A	DP 513564	Class B
UNMK DP 513564	PEG XIIc DP 513564	ob257	344°05'30"	A DP 513564	0°00'00"	54.46 A	DP 513564	Class B
UNMK DP 28584	UNMK DP 28584	ob256	288°04'00"	A DP 28584	0°00'00"	22.64 A	DP 28584	Class B
UNMK DP 28584	UNMK DP 28584	ob259	203°42'00"	A SO 5795	0°00'00"	9.36 A	DP 28584	Class B
UNMK DP 28584	UNMK DP 28584	ob260	173°56'00"	A DP 28584	0°00'00"	20.14 A	DP 28584	Class B
UNMK DP 28584	UNMK DP 28584	ob261	205°56'00"	A DP 28584	0°00'00"	19.11 A	DP 28584	Class B
UNMK DP 28584	UNMK DP 28584	ob262	233°06'00"	A DP 28584	0°00'00"	27.15 A	DP 28584	Class B
UNMK DP 28584	UNMK DP 28584	ob263	230°28'00"	A DP 28584	0°00'00"	92.96 A	DP 28584	Class B
UNMK DP 28584	UNMK DP 28584	ob264	218°28'00"	A DP 28584	0°00'00"	42.54 A	DP 28584	Class B

Mark and Vector

Survey Number DP 577609

Meridional Circuit Hawkes Bay 2000

From	To	Code	Bearing	Adpt Surv	Bearing Correction	Distance	Adpt Surv	Class
UNMK DP 28584	UNMK DP 28584	ob265	209°26'00"	A DP 28584	0°00'00"	34.99 A	DP 28584	Class B
UNMK DP 28584	UNMK DP 28584	ob266	220°06'00"	A DP 28584	0°00'00"	34.99 A	DP 28584	Class B
UNMK DP 28584	UNMK DP 28584	ob267	230°36'00"	A DP 28584	0°00'00"	97.26 A	DP 28584	Class B
UNMK DP 28584	UNMK DP 28584	ob268	226°48'00"	A DP 28584	0°00'00"	35.46 A	DP 28584	Class B
UNMK DP 28584	UNMK DP 28584	ob269	213°58'00"	A DP 28584	0°00'00"	41.09 A	DP 28584	Class B
UNMK DP 28584	UNMK DP 28584	ob270	229°56'00"	A DP 28584	0°00'00"	2.52 A	DP 28584	Class B
UNMK DP 28584	UNMK DP 28584	ob271	229°56'00"	A DP 28584	0°00'00"	14.89 A	DP 28584	Class B
UNMK DP 28584	UNMK DP 28584	ob273	252°08'00"	A DP 28584	0°00'00"	11.12 A	DP 28584	Class B
UNMK DP 28584	UNMK DP 28584	ob274	252°08'00"	A DP 28584	0°00'00"	23.86 A	DP 28584	Class B
UNMK DP 28584	UNMK DP 28584	ob276	312°53'00"	A DP 28584	0°00'00"	35.82 A	DP 28584	Class B
UNMK DP 28584	UNMK DP 28584	ob277	283°06'00"	A DP 28584	0°00'00"	17.15 A	DP 28584	Class B
UNMK DP 28584	UNMK DP 28584	ob278	267°05'00"	A DP 28584	0°00'00"	25.55 A	DP 28584	Class B
UNMK DP 28584	UNMK DP 28584	ob279	298°17'00"	A DP 28584	0°00'00"	25.56 A	DP 28584	Class B
UNMK DP 28584	UNMK DP 28584	ob280	311°56'00"	A DP 28584	0°00'00"	33.37 A	DP 28584	Class B
UNMK DP 28584	UNMK DP 28584	ob281	268°11'00"	A DP 28584	0°00'00"	34.80 A	DP 28584	Class B
UNMK DP 28584	UNMK DP 28584	ob282	317°53'00"	A DP 28584	0°00'00"	29.62 A	DP 28584	Class B
UNMK DP 28584	UNMK DP 28584	ob283	258°17'00"	A DP 28584	0°00'00"	26.78 A	DP 28584	Class B
UNMK DP 28584	UNMK DP 28584	ob284	239°33'00"	A DP 28584	0°00'00"	31.04 A	DP 28584	Class B
UNMK DP 28584	UNMK DP 28584	ob285	271°15'00"	A DP 28584	0°00'00"	31.21 A	DP 28584	Class B
UNMK DP 28584	UNMK DP 28584	ob286	152°10'00"	A DP 28584	0°00'00"	1.32 A	DP 28584	Class B
UNMK DP 28584	UNMK DP 28584	ob287	103°21'00"	A DP 28584	0°00'00"	26.33 A	DP 28584	Class B
UNMK DP 28584	UNMK DP 28584	ob288	81°25'00"	A DP 28584	0°00'00"	24.51 A	DP 28584	Class B
UNMK DP 28584	UNMK DP 28584	ob289	120°41'00"	A DP 28584	0°00'00"	16.99 A	DP 28584	Class B
UNMK DP 28584	UNMK DP 28584	ob290	145°06'00"	A DP 28584	0°00'00"	39.20 A	DP 28584	Class B

Mark and Vector

Survey Number DP 577609

Meridional Circuit Hawkes Bay 2000

From	To	Code	Bearing	Adpt Surv	Bearing Correction	Distance	Adpt Surv	Class
UNMK DP 28584	UNMK DP 28584	ob291	122°31'00"	A DP 28584	0°00'00"	19.46 A	DP 28584	Class B
UNMK DP 28584	UNMK DP 28584	ob292	170°59'40"	A DP 28584	0°00'00"	63.61 A	DP 28584	Class B
UNMK DP 28584	UNMK DP 28584	ob293	238°52'00"	A DP 28584	0°00'00"	27.23 A	DP 28584	Class B
UNMK DP 28584	UNMK DP 28584	ob294	217°45'00"	A DP 28584	0°00'00"	14.39 A	DP 28584	Class B
UNMK DP 28584	UNMK DP 28584	ob295	217°45'00"	A DP 28584	0°00'00"	9.64 A	DP 28584	Class B
UNMK DP 28584	UNMK DP 28584	ob297	217°45'00"	A DP 28584	0°00'00"	35.68 A	DP 28584	Class B
UNMK DP 28584	UNMK DP 28584	ob299	230°05'00"	A DP 28584	0°00'00"	38.39 A	DP 28584	Class B
UNMK DP 28584	UNMK DP 28584	ob300	194°06'00"	A DP 28584	0°00'00"	34.57 A	DP 28584	Class B
UNMK DP 28584	UNMK DP 28584	ob301	208°27'00"	A DP 28584	0°00'00"	64.49 A	DP 28584	Class B
UNMK DP 28584	UNMK DP 28584	ob302	261°11'00"	A DP 28584	0°00'00"	34.68 A	DP 28584	Class B
UNMK DP 28584	UNMK DP 28584	ob303	217°44'00"	A DP 28584	0°00'00"	18.40 A	DP 28584	Class B
UNMK DP 28584	UNMK DP 28584	ob304	265°11'00"	A DP 28584	0°00'00"	59.45 A	DP 28584	Class B
UNMK DP 28584	UNMK DP 28584	ob305	2°37'00"	A DP 28584	0°00'00"	28.47 A	DP 28584	Class B
UNMK DP 28584	UNMK DP 28584	ob306	58°43'00"	A DP 28584	0°00'00"	41.50 A	DP 28584	Class B
UNMK DP 28584	UNMK DP 28584	ob307	19°27'00"	A DP 28584	0°00'00"	19.88 A	DP 28584	Class B
UNMK DP 28584	UNMK DP 28584	ob308	345°04'00"	A DP 28584	0°00'00"	5.73 A	DP 28584	Class B
UNMK DP 28584	UNMK DP 28584	ob309	345°04'00"	A DP 28584	0°00'00"	4.17 A	DP 28584	Class B
UNMK DP 28584	UNMK DP 28584	ob311	345°04'00"	A DP 28584	0°00'00"	3.02 A	DP 28584	Class B
UNMK DP 28584	UNMK DP 28584	ob313	272°43'20"	A DP 28584	0°00'00"	71.87 A	DP 28584	Class B
UNMK DP 28584	UNMK DP 28584	ob314	208°00'00"	A DP 28584	0°00'00"	40.47 A	DP 28584	Class B
UNMK DP 28584	UNMK DP 28584	ob315	226°35'00"	A DP 28584	0°00'00"	46.35 A	DP 28584	Class B
UNMK DP 28584	UNMK DP 28584	ob316	206°44'00"	A DP 28584	0°00'00"	36.75 A	DP 28584	Class B
UNMK DP 28584	UNMK DP 28584	ob317	206°44'00"	A DP 28584	0°00'00"	7.61 A	DP 28584	Class B
UNMK DP 28584	UNMK DP 28584	ob319	206°44'00"	A DP 28584	0°00'00"	3.73 A	DP 28584	Class B

Mark and Vector

Survey Number DP 577609

Meridional Circuit Hawkes Bay 2000

From	To	Code	Bearing	Adpt Surv	Bearing Correction	Distance	Adpt Surv	Class
UNMK DP 28584	UNMK DP 28584	ob165	26°44'00"	A DP 28584	0°00'00"	54.68 A	DP 28584	Class B
UNMK DP 28584	UNMK DP 28584	ob321	46°35'00"	A DP 28584	0°00'00"	46.46 A	DP 28584	Class B
UNMK DP 28584	UNMK DP 28584	ob322	28°00'00"	A DP 28584	0°00'00"	45.17 A	DP 28584	Class B
UNMK DP 28584	UNMK DP 28584	ob323	92°43'20"	A DP 28584	0°00'00"	85.52 A	DP 28584	Class B
UNMK DP 28584	UNMK DP 28584	ob324	165°04'00"	A DP 28584	0°00'00"	7.37 A	DP 28584	Class B
UNMK DP 28584	UNMK DP 28584	ob325	165°04'00"	A DP 28584	0°00'00"	4.17 A	DP 28584	Class B
UNMK DP 28584	UNMK DP 28584	ob327	165°04'00"	A DP 28584	0°00'00"	11.78 A	DP 28584	Class B
UNMK DP 28584	UNMK DP 28584	ob329	199°27'00"	A DP 28584	0°00'00"	26.54 A	DP 28584	Class B
UNMK DP 28584	UNMK DP 28584	ob330	238°43'00"	A DP 28584	0°00'00"	39.74 A	DP 28584	Class B
UNMK DP 28584	UNMK DP 28584	ob331	182°37'00"	A DP 28584	0°00'00"	11.75 A	DP 28584	Class B
UNMK DP 28584	UNMK DP 28584	ob332	85°11'00"	A DP 28584	0°00'00"	43.67 A	DP 28584	Class B
UNMK DP 28584	UNMK DP 28584	ob333	37°44'00"	A DP 28584	0°00'00"	17.99 A	DP 28584	Class B
UNMK DP 28584	UNMK DP 28584	ob334	81°11'00"	A DP 28584	0°00'00"	33.71 A	DP 28584	Class B
UNMK DP 28584	UNMK DP 28584	ob335	28°27'00"	A DP 28584	0°00'00"	58.27 A	DP 28584	Class B
UNMK DP 28584	UNMK DP 28584	ob336	14°06'00"	A DP 28584	0°00'00"	36.55 A	DP 28584	Class B
UNMK DP 28584	UNMK DP 28584	ob337	50°05'00"	A DP 28584	0°00'00"	40.56 A	DP 28584	Class B
UNMK DP 28584	UNMK DP 28584	ob338	37°45'00"	A DP 28584	0°00'00"	8.30 A	DP 28584	Class B
UNMK DP 28584	UNMK DP 28584	ob339	37°45'00"	A DP 28584	0°00'00"	11.25 A	DP 28584	Class B
UNMK DP 28584	UNMK DP 28584	ob341	37°45'00"	A DP 28584	0°00'00"	40.94 A	DP 28584	Class B
UNMK DP 28584	UNMK DP 28584	ob343	58°52'00"	A DP 28584	0°00'00"	22.36 A	DP 28584	Class B
UNMK DP 28584	UNMK DP 28584	ob344	350°59'40"	A DP 28584	0°00'00"	52.38 A	DP 28584	Class B
UNMK DP 28584	UNMK DP 28584	ob345	302°31'00"	A DP 28584	0°00'00"	16.95 A	DP 28584	Class B
UNMK DP 28584	UNMK DP 28584	ob346	325°06'00"	A DP 28584	0°00'00"	39.03 A	DP 28584	Class B
UNMK DP 28584	UNMK DP 28584	ob347	300°41'00"	A DP 28584	0°00'00"	11.26 A	DP 28584	Class B

Mark and Vector

Survey Number DP 577609

Meridional Circuit Hawkes Bay 2000

From	To	Code	Bearing	Adpt Surv	Bearing Correction	Distance	Adpt Surv	Class
UNMK DP 28584	UNMK DP 28584	ob348	261°25'00"	A DP 28584	0°00'00"	22.88 A	DP 28584	Class B
UNMK DP 28584	UNMK DP 28584	ob349	283°21'00"	A DP 28584	0°00'00"	32.80 A	DP 28584	Class B
UNMK DP 28584	UNMK DP 28584	ob350	332°10'00"	A DP 28584	0°00'00"	22.86 A	DP 28584	Class B
UNMK DP 28584	UNMK DP 28584	ob351	91°15'00"	A DP 28584	0°00'00"	45.37 A	DP 28584	Class B
UNMK DP 28584	UNMK DP 28584	ob352	59°33'00"	A DP 28584	0°00'00"	29.85 A	DP 28584	Class B
UNMK DP 28584	UNMK DP 28584	ob353	78°17'00"	A DP 28584	0°00'00"	34.16 A	DP 28584	Class B
UNMK DP 28584	UNMK DP 28584	ob354	137°53'00"	A DP 28584	0°00'00"	30.71 A	DP 28584	Class B
UNMK DP 28584	UNMK DP 28584	ob355	88°11'00"	A DP 28584	0°00'00"	34.19 A	DP 28584	Class B
UNMK DP 28584	UNMK DP 28584	ob356	131°56'00"	A DP 28584	0°00'00"	36.18 A	DP 28584	Class B
UNMK DP 28584	UNMK DP 28584	ob357	118°17'00"	A DP 28584	0°00'00"	21.58 A	DP 28584	Class B
UNMK DP 28584	UNMK DP 28584	ob358	87°05'00"	A DP 28584	0°00'00"	24.17 A	DP 28584	Class B
UNMK DP 28584	UNMK DP 28584	ob359	103°06'00"	A DP 28584	0°00'00"	21.21 A	DP 28584	Class B
UNMK DP 28584	UNMK DP 28584	ob360	132°53'00"	A DP 28584	0°00'00"	32.62 A	DP 28584	Class B
UNMK DP 28584	UNMK DP 28584	ob361	72°08'00"	A DP 28584	0°00'00"	27.16 A	DP 28584	Class B
UNMK DP 28584	UNMK DP 28584	ob362	49°56'00"	A DP 28584	0°00'00"	14.05 A	DP 28584	Class B
UNMK DP 28584	UNMK DP 28584	ob363	33°58'00"	A DP 28584	0°00'00"	40.81 A	DP 28584	Class B
UNMK DP 28584	UNMK DP 28584	ob364	46°48'00"	A DP 28584	0°00'00"	36.92 A	DP 28584	Class B
UNMK DP 28584	UNMK DP 28584	ob365	50°36'00"	A DP 28584	0°00'00"	96.67 A	DP 28584	Class B
UNMK DP 28584	UNMK DP 28584	ob366	40°06'00"	A DP 28584	0°00'00"	33.14 A	DP 28584	Class B
UNMK DP 28584	UNMK DP 28584	ob367	29°26'00"	A DP 28584	0°00'00"	34.85 A	DP 28584	Class B
UNMK DP 28584	UNMK DP 28584	ob368	38°28'00"	A DP 28584	0°00'00"	44.38 A	DP 28584	Class B
UNMK DP 28584	UNMK DP 28584	ob369	50°28'00"	A DP 28584	0°00'00"	94.24 A	DP 28584	Class B
UNMK DP 28584	UNMK DP 28584	ob370	53°06'00"	A DP 28584	0°00'00"	24.96 A	DP 28584	Class B
UNMK DP 28584	UNMK DP 28584	ob371	25°56'00"	A DP 28584	0°00'00"	13.83 A	DP 28584	Class B

Mark and Vector

Survey Number DP 577609

Meridional Circuit Hawkes Bay 2000

From	To	Code	Bearing	Adpt Surv	Bearing Correction	Distance	Adpt Surv	Class
UNMK DP 28584	UNMK DP 28584	ob372	353°56'00"	A DP 28584	0°00'00"	19.93	A DP 28584	Class B
UNMK DP 28584	UNMK DP 28584	ob373	23°42'00"	A DP 28584	0°00'00"	21.08	A DP 28584	Class B
UNMK DP 28584	UNMK DP 513564	ob374	108°04'00"	A DP 28584	0°00'00"	19.27	A DP 513564	Class B
UNMK DP 513564	PEG XIIe DP 513564	ob258	108°04'00"	A DP 28584	0°00'00"	15.96	A DP 513564	Class B
UNMK DP 28584	UNMK DP 28584	ob175	231°35'40"	A DP 28584	0°00'00"	105.86	A DP 28584	Class B
UNMK DP 28584	UNMK DP 28584	ob375	224°19'00"	A DP 28584	0°00'00"	142.94	A DP 28584	Class B
UNMK DP 28584	UNMK DP 28584	ob376	234°53'00"	A DP 28584	0°00'00"	88.38	A DP 28584	Class B
UNMK DP 28584	UNMK DP 28584	ob377	239°25'00"	A DP 28584	0°00'00"	84.32	A DP 28584	Class B
UNMK DP 28584	UNMK DP 28584	ob378	244°41'20"	A DP 28584	0°00'00"	131.02	A DP 28584	Class B
UNMK DP 28584	UNMK DP 28584	ob379	249°01'40"	A DP 28584	0°00'00"	69.60	A DP 28584	Class B
UNMK DP 28584	UNMK DP 28584	ob380	238°34'40"	A DP 28584	0°00'00"	5.52	A DP 28584	Class B
UNMK DP 28584	UNMK DP 28584	ob298	238°34'40"	A DP 28584	0°00'00"	28.14	A DP 28584	Class B
UNMK DP 28584	UNMK DP 28584	ob340	238°34'40"	A DP 28584	0°00'00"	141.08	A DP 28584	Class B
UNMK DP 28584	UNMK DP 28584	ob328	238°34'40"	A DP 28584	0°00'00"	10.43	A DP 28584	Class B
UNMK DP 28584	UNMK DP 28584	ob310	238°34'40"	A DP 28584	0°00'00"	13.76	A DP 28584	Class B
UNMK DP 28584	UNMK DP 28584	ob381	236°09'00"	A DP 28584	0°00'00"	149.92	A DP 28584	Class B
UNMK DP 28584	UNMK DP 28584	ob382	238°26'40"	A DP 28584	0°00'00"	11.75	A DP 28584	Class B
UNMK DP 28584	UNMK DP 28584	ob320	238°26'40"	A DP 28584	0°00'00"	6.26	A DP 28584	Class B
UNMK DP 28584	UNMK DP 28584	ob166	58°26'40"	A DP 28584	0°00'00"	19.02	A DP 28584	Class B
UNMK DP 28584	UNMK DP 28584	ob318	58°26'40"	A DP 28584	0°00'00"	5.20	A DP 28584	Class B
UNMK DP 28584	UNMK DP 28584	ob383	56°09'00"	A DP 28584	0°00'00"	149.93	A DP 28584	Class B
UNMK DP 28584	UNMK DP 28584	ob384	58°34'40"	A DP 28584	0°00'00"	15.03	A DP 28584	Class B
UNMK DP 28584	UNMK DP 28584	ob312	58°34'40"	A DP 28584	0°00'00"	10.43	A DP 28584	Class B
UNMK DP 28584	UNMK DP 28584	ob326	58°34'40"	A DP 28584	0°00'00"	150.42	A DP 28584	Class B

Mark and Vector

Survey Number DP 577609

Meridional Circuit Hawkes Bay 2000

From	To	Code	Bearing	Adpt Surv	Bearing Correction	Distance	Adpt Surv	Class
UNMK DP 28584	UNMK DP 28584	ob342	58°34'40"	A DP 28584	0°00'00"	23.51	A DP 28584	Class B
UNMK DP 28584	UNMK DP 28584	ob385	69°01'40"	A DP 28584	0°00'00"	3.17	A DP 28584	Class B
UNMK DP 28584	UNMK DP 28584	ob296	69°01'40"	A DP 28584	0°00'00"	66.65	A DP 28584	Class B
UNMK DP 28584	UNMK DP 28584	ob386	64°41'20"	A DP 28584	0°00'00"	130.68	A DP 28584	Class B
UNMK DP 28584	UNMK DP 28584	ob387	59°25'00"	A DP 28584	0°00'00"	17.68	A DP 28584	Class B
UNMK DP 28584	UNMK DP 28584	ob275	59°25'00"	A DP 28584	0°00'00"	25.54	A DP 28584	Class B
UNMK DP 28584	UNMK DP 28584	ob272	59°25'00"	A DP 28584	0°00'00"	40.76	A DP 28584	Class B
UNMK DP 28584	UNMK DP 28584	ob388	54°53'00"	A DP 28584	0°00'00"	87.86	A DP 28584	Class B
UNMK DP 28584	UNMK DP 28584	ob389	44°19'00"	A DP 28584	0°00'00"	142.83	A DP 28584	Class B
UNMK DP 28584	UNMK DP 28584	ob390	51°35'40"	A DP 28584	0°00'00"	111.79	A DP 28584	Class B
POST XVIIb DP 513564	UNMK DP 457138	ob99	186°44'00"	A DP 457138	0°00'00"	39.46	A DP 513564	Class B
UNMK DP 457138	UNMK DP 457138	ob391	260°49'00"	A DP 457138	0°00'00"	99.13	A DP 457138	Class B
UNMK DP 457138	UNMK DP 457138	ob392	322°06'30"	A DP 457138	0°00'00"	56.45	A DP 457138	Class B
UNMK DP 457138	UNMK DP 457138	ob393	258°43'00"	A DP 457138	0°00'00"	16.78	A DP 457138	Class B
UNMK DP 457138	UNMK DP 457138	ob394	229°12'30"	A DP 457138	0°00'00"	56.32	A DP 457138	Class B
UNMK DP 457138	UNMK DP 457138	ob395	215°40'00"	A DP 457138	0°00'00"	16.78	A DP 457138	Class B
UNMK DP 457138	UNMK DP 457138	ob396	247°48'00"	A DP 457138	0°00'00"	35.25	A DP 457138	Class B
UNMK DP 457138	UNMK DP 457138	ob397	272°13'00"	A DP 457138	0°00'00"	12.78	A DP 457138	Class B
UNMK DP 457138	UNMK DP 457138	ob398	247°35'00"	A DP 457138	0°00'00"	27.97	A DP 457138	Class B
UNMK DP 457138	UNMK DP 457138	ob399	263°40'00"	A DP 457138	0°00'00"	24.67	A DP 457138	Class B
UNMK DP 457138	UNMK DP 457138	ob400	283°01'00"	A DP 457138	0°00'00"	7.51	A DP 457138	Class B
UNMK DP 457138	UNMK DP 457138	ob401	256°32'00"	A DP 457138	0°00'00"	13.48	A DP 457138	Class B
UNMK DP 457138	UNMK DP 457138	ob402	248°30'00"	A DP 457138	0°00'00"	46.02	A DP 457138	Class B
UNMK DP 457138	UNMK DP 457138	ob403	259°53'00"	A DP 457138	0°00'00"	45.28	A DP 457138	Class B

Mark and Vector

Survey Number DP 577609

Meridional Circuit Hawkes Bay 2000

From	To	Code	Bearing	Adpt Surv	Bearing Correction	Distance	Adpt Surv	Class
UNMK DP 457138	UNMK DP 457138	ob404	297°00'00"	A DP 457138	0°00'00"	33.50 A	DP 457138	Class B
UNMK DP 457138	UNMK DP 457138	ob405	306°02'30"	A DP 457138	0°00'00"	62.70 A	DP 457138	Class B
UNMK DP 457138	UNMK DP 457138	ob406	299°52'00"	A DP 457138	0°00'00"	33.90 A	DP 457138	Class B
UNMK DP 457138	UNMK DP 457138	ob407	321°41'00"	A DP 457138	0°00'00"	25.10 A	DP 457138	Class B
UNMK DP 457138	UNMK DP 457138	ob408	341°11'00"	A DP 457138	0°00'00"	37.42 A	DP 457138	Class B
UNMK DP 457138	UNMK DP 457138	ob409	61°06'00"	A DP 457138	0°00'00"	3.17 A	DP 457138	Class B
UNMK DP 457138	UNMK DP 457138	ob410	355°32'30"	A DP 457138	0°00'00"	50.64 A	DP 457138	Class B
UNMK DP 457138	UNMK DP 457138	ob411	49°34'00"	A DP 457138	0°00'00"	61.41 A	DP 457138	Class B
UNMK DP 457138	UNMK DP 457138	ob412	356°57'00"	A DP 457138	0°00'00"	23.61 A	DP 457138	Class B
UNMK DP 457138	UNMK DP 457138	ob413	78°58'00"	A DP 457138	0°00'00"	46.03 A	DP 457138	Class B
UNMK DP 457138	UNMK DP 457138	ob414	102°46'00"	A DP 457138	0°00'00"	33.82 A	DP 457138	Class B
UNMK DP 457138	UNMK DP 457138	ob415	89°04'00"	A DP 457138	0°00'00"	27.82 A	DP 457138	Class B
UNMK DP 457138	UNMK DP 457138	ob416	7°43'00"	A DP 457138	0°00'00"	32.07 A	DP 457138	Class B
UNMK DP 457138	UNMK DP 457138	ob417	73°36'00"	A DP 457138	0°00'00"	47.14 A	DP 457138	Class B
UNMK DP 457138	UNMK DP 457138	ob418	82°10'00"	A DP 457138	0°00'00"	50.51 A	DP 457138	Class B
UNMK DP 457138	UNMK DP 457138	ob419	102°21'00"	A DP 457138	0°00'00"	16.80 A	DP 457138	Class B
UNMK DP 457138	UNMK DP 457138	ob420	96°42'00"	A DP 457138	0°00'00"	36.46 A	DP 457138	Class B
UNMK DP 457138	UNMK DP 457138	ob421	88°57'00"	A DP 457138	0°00'00"	11.33 A	DP 457138	Class B
UNMK DP 457138	UNMK DP 457138	ob422	358°28'00"	A DP 457138	0°00'00"	42.33 A	DP 457138	Class B
UNMK DP 457138	UNMK DP 457138	ob423	13°06'00"	A DP 457138	0°00'00"	15.50 A	DP 457138	Class B
UNMK DP 457138	UNMK DP 457138	ob424	103°31'00"	A DP 457138	0°00'00"	75.53 A	DP 457138	Class B
UNMK DP 457138	UNMK DP 457138	ob425	79°39'00"	A DP 457138	0°00'00"	72.78 A	DP 457138	Class B
UNMK DP 457138	UNMK DP 457138	ob426	107°41'00"	A DP 457138	0°00'00"	9.31 A	DP 457138	Class B
UNMK DP 457138	POST XVa DP 513564	ob427	98°22'30"	A DP 457138	0°00'00"	76.41 A	DP 457138	Class B

Mark and Vector

Survey Number DP 577609

Meridional Circuit Hawkes Bay 2000

From	To	Code	Bearing	Adpt Surv	Bearing Correction	Distance	Adpt Surv	Class
RM V SO 5797	POST SO 5797	ob430	252°38'00"	A SO 5797	0°00'00"	20.56 A	SO 5797	
RM V SO 5797	IT LXXX SO 5797	ob431	7°50'30"	A SO 5797	0°00'00"	141.52 A	SO 5797	
IT LXXX SO 5797	IT II SO 8335	ob432	186°21'45"	A SO 8335	0°00'00"	349.88 A	SO 8335	
IT II SO 8335	IT I SO 8335	ob433	193°03'25"	A SO 8335	0°00'00"	538.48 A	SO 8335	
10696	10697	ob104	191°58'51"	A SO 8335	0°00'00"	1,610.26 A	SO 6595	
10697	D (Nuhaka North SD)	ob27	258°08'22"	A SO 8335	0°00'00"	2,073.60 A	SO 6508	
10697	BM HA 50 SO 8102	ob28	276°00'45"	A SO 8095	0°00'00"	551.42 A	SO 8095	
BM HA 50 SO 8102	PEG If DP 513564	ob434	42°25'00"	A DP 513564	0°00'00"	8.75 A	DP 513564	

Mark Name	Mark Condition	Description
IS IV DP 577609		Down 0.25 metres.
IS V DP 577609		Down 0.25 metres.
IT I DP 577609		Down 0.3 metres.
IT II DP 577609		Down 0.3 metres.
IT III DP 577609		Galvanised iron tube, down 0.3 metres.
IT XV DP 513564		Galvanised iron tube, down 0.3 metres.
PEG IIIb DP 577609		Position of POST SO 5796 re-pegged.
PEG XCa DP 577609		Position of PEG SO 5796 re-pegged.
POST Ia DP 577609		Boundary disk and nail in side of post.
POST Ib DP 577609		Boundary disk and nail in side of post.
POST Ic DP 577609		Boundary disk and nail in side of post.
POST IIa DP 577609		Boundary disk and nail in side of post.
POST IIb DP 577609		Boundary disk and nail in side of post.
POST IIc DP 577609		Boundary disk and nail in side of post.
POST IId DP 577609		Boundary disk and nail in side of post.
POST IIIa DP 577609		Boundary disk and nail in side of post.
POST XXa DP 577609		Boundary post in position of PEG XXa DP 513564.

*** End of Report ***

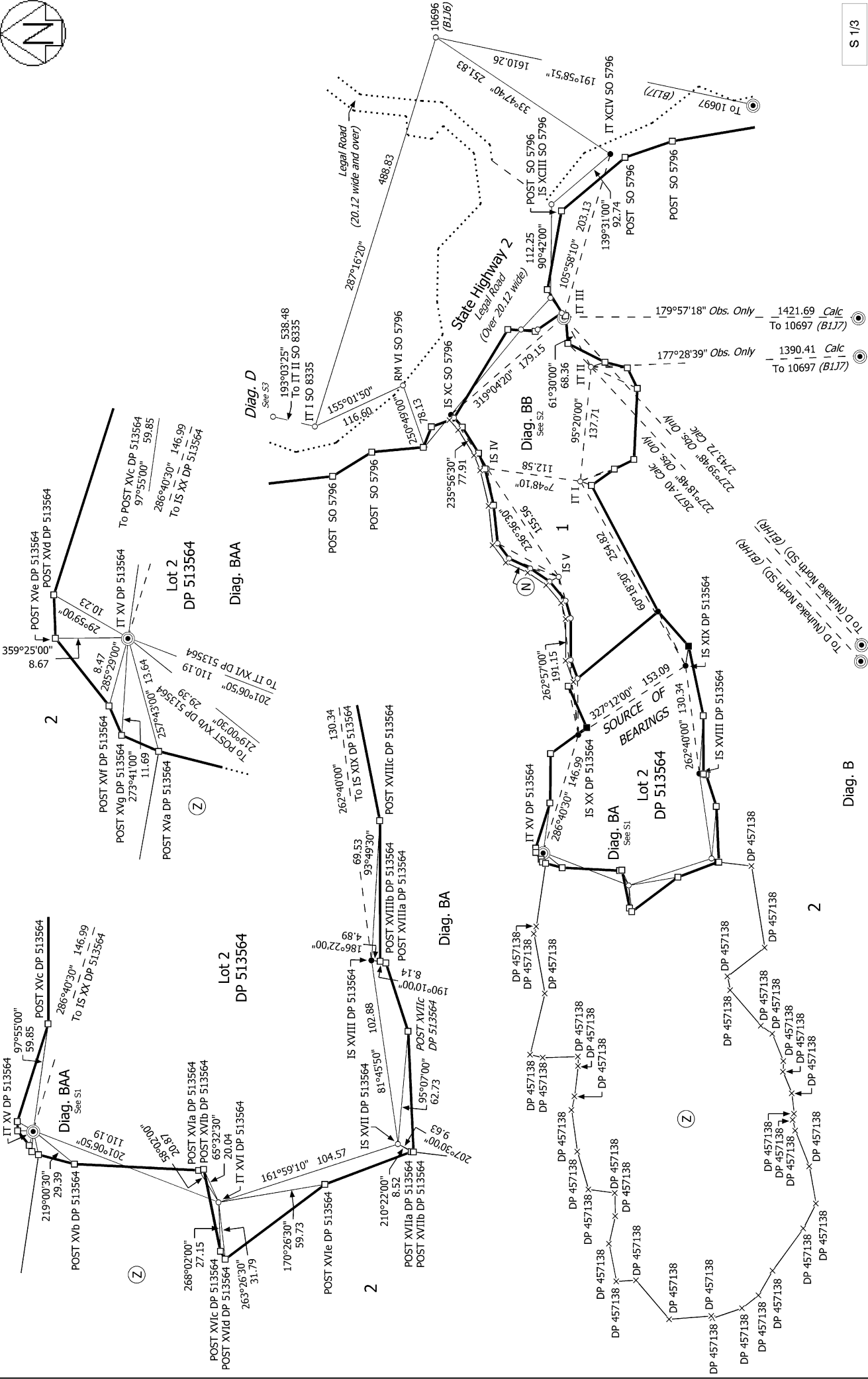
EASEMENTS SCHEDULE

Plan Number: DP 577609
 Land Registration District: Hawkes Bay
 Territory Authority: Wairoa District Council

Schedule of Existing Easements			
Purpose	Shown	Servient Tenement (Burdened Land)	Created by
Right of Way	A M	Lot 2 hereon	EI 10922677.3
Right of Way	N	Lot 2 hereon	EI 10922677.3
Right of Way and telecommunications	A B C D E F G H I	Lot 2 hereon	Lease 9909144.1
Right to convey electricity	C D F H J K L	Lot 2 hereon	Lease 9909144.1

Memorandum of Easement			
Purpose	Shown	Servient Tenement (Burdened Land)	Dominant Tenement (Benefited Land)
Right of Way	N	Lot 2 hereon	Lot 1 hereon

Schedule of Existing Covenant			
Purpose	Shown	Servient Tenement	Created by
Open Space	Z	Lot 2 hereon	9213347.1



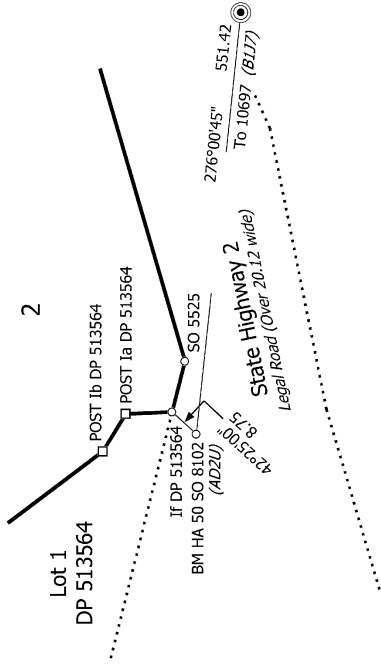
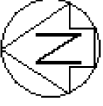
S 1/3

Record of Survey
DP 577609
Deposited on: 7/11/2022

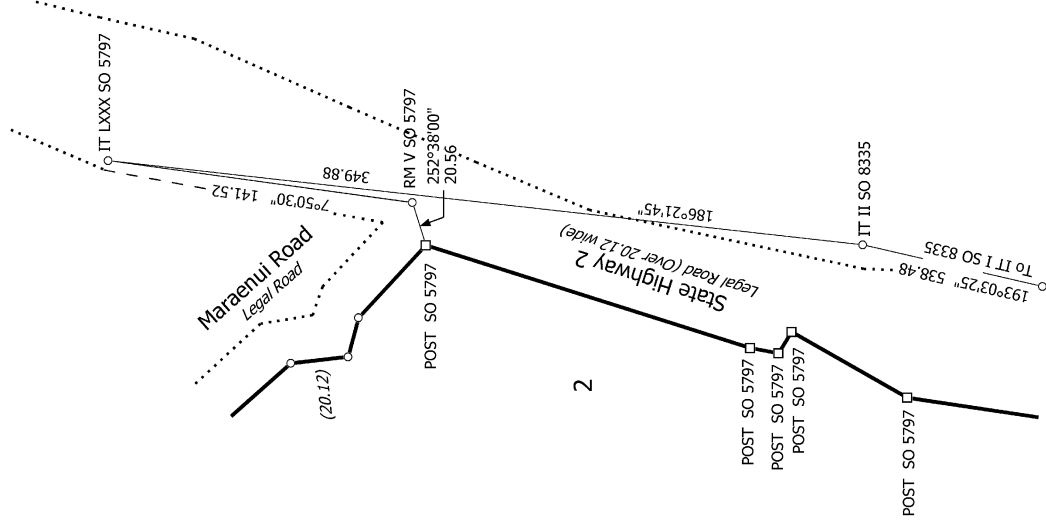
Surveyor: Kevin John Taylor
Firm: Survey Gisborne Ltd
Date of Survey: 5/04/2022

Lots 1 and 2 Being a Subdivision of Lot 3 DP 513564

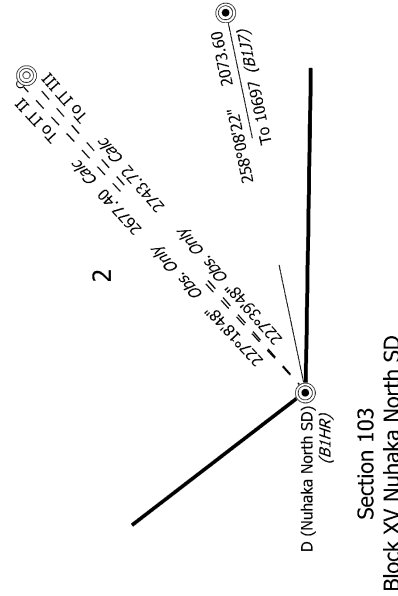
Land District: Hawkes Bay
Digitally Generated Plan
Generated on: 07/12/2022 12:56pm Page 23 of 30



Diag. C



Diag. D



Diag. A

S 3/3

Land District: Hawkes Bay

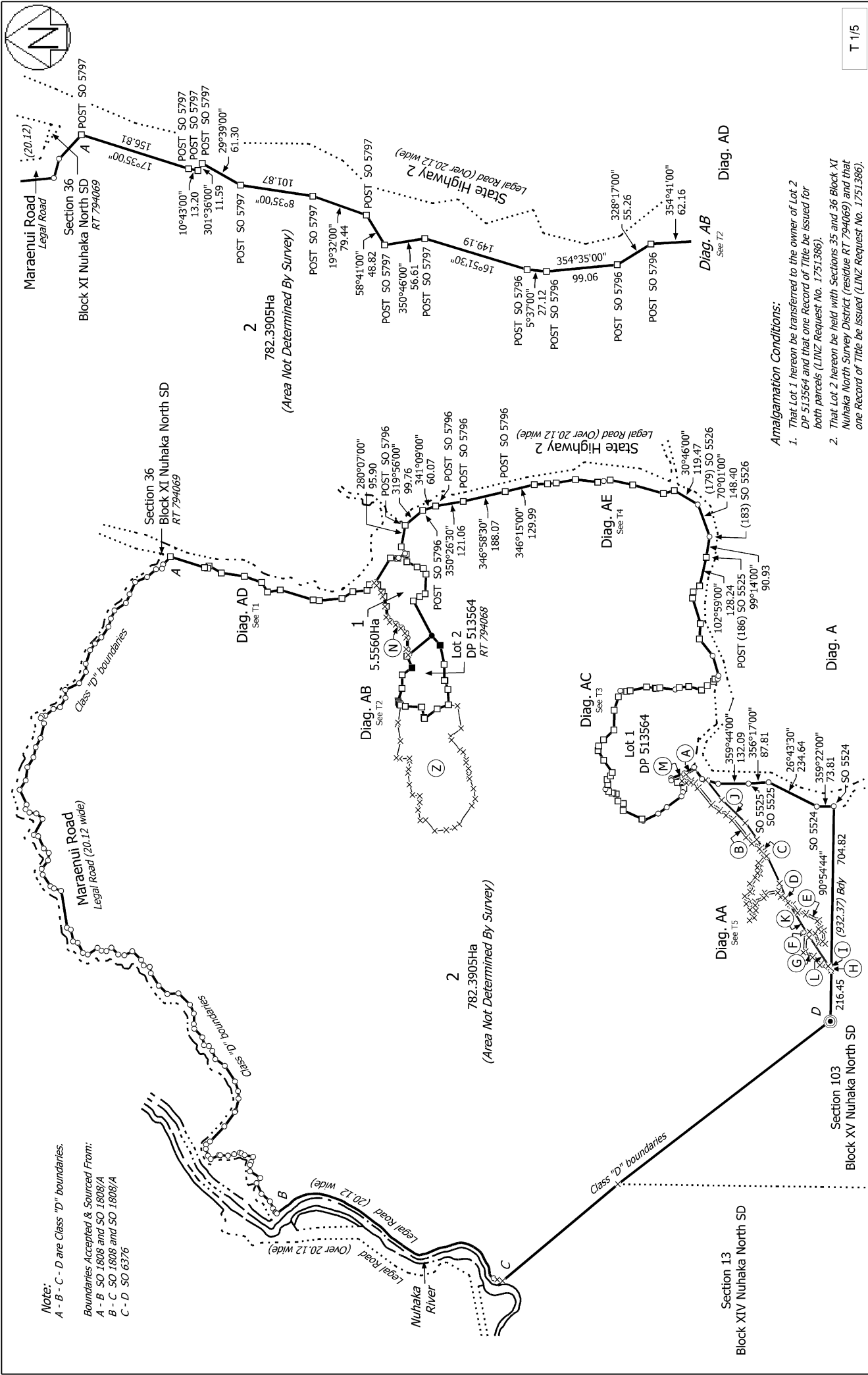
Lots 1 and 2 Being a Subdivision of Lot 3 DP 513564

Record of Survey
DP 577609

Digitally Generated Plan
Generated on: 07/12/2022 12:56pm Page 25 of 30

Surveyor: Kevin John Taylor
Firm: Survey Gisborne Ltd
Date of Survey: 5/04/2022

Deposited on: 7/11/2022



Note:
 A - B - C - D are Class "D" boundaries.
 Boundaries Accepted & Sourced From:
 A - B SO 1808 and SO 1808/A
 B - C SO 1808 and SO 1808/A
 C - D SO 6376

Amalgamation Conditions:
 1. That Lot 1 hereon be transferred to the owner of Lot 2 DP 513564 and that one Record of Title be issued for both parcels (LINZ Request No. 1751386).
 2. That Lot 2 hereon be held with Sections 35 and 36 Block XI Nuhaka North Survey District (residue RT 794069) and that one Record of Title be issued (LINZ Request No. 1751386).

Land District: Hawkes Bay	Lots 1 and 2 Being a Subdivision of Lot 3 DP 513564	
Surveyor: Kevin John Taylor	Record of Survey	DP 577609
Firm: Survey Gisborne Ltd	Deposited on: 7/11/2022	
Date of Survey: 5/04/2022		

