

# Record of Survey - DP 577064

**Survey Number** DP 577064  
**Surveyor Reference** dombroski  
**Surveyor** Patrick Ray Sole  
**Survey Firm** Pat Sole Surveyors Ltd  
**Surveyor Declaration** I Patrick Ray Sole, being a licensed cadastral surveyor, certify that--  
 (a) this dataset provided by me and its related survey are accurate, correct and in accordance with the Cadastral Survey Act 2002 and Cadastral Survey Rules 2021; and  
 (b) the survey was undertaken by me or under my personal direction.  
 Declared on 05 Jul 2022 08:28 PM

## Survey Details

**Dataset Description** LOTS 1 AND 2 BEING SUBDIVISION OF SECTIONS 6 AND 7 SO 435282  
**Purpose** LT Subdivision  
**Status** Deposited **Type** Survey  
**Land District** Taranaki **Survey Class** Class B  
**Meridional Circuit** Taranaki 2000 **Vertical Datum** None

## Survey Dates

**Surveyed Date** 19/05/2022 **Certified Date** 05/07/2022  
**Submitted Date** 05/07/2022 20:28:29 **Survey Approval Date** 06/07/2022  
**Deposit Date** 02/06/2023

## Referenced Surveys

Survey Number	Land District	Bearing Correction
DP 2764	Taranaki	0°00'00"
DP 2781	Taranaki	0°00'00"
SO 7248	Taranaki	0°00'00"
DP 290	Taranaki	0°00'00"
DP 437	Taranaki	0°00'00"
SO 13460	Taranaki	0°00'00"
SO 7878	Taranaki	0°00'00"
SO 8308	Taranaki	0°00'00"
SO 11219	Taranaki	0°00'00"
SO 435282	Taranaki	0°00'00"

## Territorial Authorities

South Taranaki District

## Comprised In

RT 568092

## Created Parcels

Parcels	Parcel Intent	Area	RT Reference
Lot 1 Deposited Plan 577064	Fee Simple Title	0.4078 Ha	1063957
Area A Deposited Plan 577064	Easement		



# Record of Survey - DP 577064

---

## Created Parcels

Parcels	Parcel Intent	Area	RT Reference
Area B Deposited Plan 577064	Easement		
Area C Deposited Plan 577064	Easement		
Lot 2 Deposited Plan 577064	Fee Simple Title	38.3800 Ha	1063958
<b>Total Area</b>		<u>38.7878 Ha</u>	

# Mark and Vector

Survey Number DP 577064

Meridional Circuit Taranaki 2000

From	To	Code	Bearing	Adpt Surv	Bearing Correction	Distance	Adpt Surv	Class
IT 6 SO 435282	IR 7 SO 435282	ob0	311°23'11" M			453.49 M		
IR 7 SO 435282	IT CHECK SO 7878	ob3	78°33'04" M			595.55 M		
IT 6 SO 435282	IT 1 DP 577064	ob1	22°20'20" M			356.38 M		
IT 1 DP 577064	IR 2 DP 577064	ob6	24°45'10" M			66.07 M		
IR 2 DP 577064	IT CHECK SO 7878	ob8	70°33'10" M			85.23 M		
IR 2 DP 577064	IR 3 DP 577064	ob9	293°15'20" M			58.52 M		
IR 3 DP 577064	IT 4 DP 577064	ob11	265°01'50" M			56.66 M		
IT 4 DP 577064	IT 5 DP 577064	ob16	198°38'20" M			29.80 M		
IT 5 DP 577064	IT 1 DP 577064	ob18	118°29'30" M			104.76 M		
IR 3 DP 577064	PEG A DP 577064	ob12	121°58'00" M			10.80 M		
IR 3 DP 577064	PEG B DP 577064	ob13	177°39'00" M			3.74 M		
IR 3 DP 577064	PEG D DP 577064	ob14	229°29'30" M			31.47 M		
IR 3 DP 577064	PEG C DP 577064	ob15	255°47'00" M			17.14 M		
IR 7 SO 435282	RM 5 SO 435282	ob4	317°57'03" A	SO 435282	0°00'00"	96.64 A	SO 435282	
RM 5 SO 435282	RM 4 SO 435282	ob24	336°37'08" A	SO 435282	0°00'00"	289.38 A	SO 435282	
RM 4 SO 435282	PEG 32 SO 435282	ob25	329°24'00" A	SO 435282	0°00'00"	104.90 A	SO 435282	
IT 6 SO 435282	PEG 44 SO 435282	ob2	78°24'00" A	SO 435282	0°00'00"	9.00 A	SO 435282	
PEG 32 SO 435282	POST 33 SO 435282	ob27	144°03'49" A	SO 435282	0°00'00"	18.00 A	SO 435282	Class B
POST 33 SO 435282	POST 34 SO 435282	ob30	147°23'23" A	SO 435282	0°00'00"	105.95 A	SO 435282	Class B
POST 34 SO 435282	POST 35 SO 435282	ob31	166°16'05" A	SO 435282	0°00'00"	18.20 A	SO 435282	Class B
POST 35 SO 435282	POST 36 SO 435282	ob32	156°09'01" A	SO 435282	0°00'00"	82.67 A	SO 435282	Class B
POST 36 SO 435282	POST 37 SO 435282	ob33	155°41'39" A	SO 435282	0°00'00"	64.89 A	SO 435282	Class B
POST 37 SO 435282	POST 38 SO 435282	ob34	149°23'54" A	SO 435282	0°00'00"	51.23 A	SO 435282	Class B
POST 38 SO 435282	POST 39 SO 435282	ob35	143°00'18" A	SO 435282	0°00'00"	47.07 A	SO 435282	Class B
POST 39 SO 435282	POST 40 SO 435282	ob36	139°30'31" A	SO 435282	0°00'00"	45.06 A	SO 435282	Class B
POST 40 SO 435282	POST 41 SO 435282	ob37	135°34'22" A	SO 435282	0°00'00"	185.57 A	SO 435282	Class B
POST 41 SO 435282	POST 42 SO 435282	ob38	134°46'58" A	SO 435282	0°00'00"	29.62 A	SO 435282	Class B

# Mark and Vector

Survey Number DP 577064

Meridional Circuit Taranaki 2000

From	To	Code	Bearing	Adpt Surv	Bearing Correction	Distance	Adpt Surv	Class
POST 42 SO 435282	POST 43 SO 435282	ob39	134°50'01"	A SO 435282	0°00'00"	285.83 A	SO 435282	Class B
POST 43 SO 435282	PEG 44 SO 435282	ob40	83°34'33"	A SO 435282	0°00'00"	12.70 A	SO 435282	Class B
IT CHECK SO 7878	IR I SO 11219	ob5	3°27'23"	A SO 435282	0°00'00"	165.79 A	SO 435282	
IR I SO 11219	IP II SO 8308	ob41	290°26'00"	A SO 8308	0°00'00"	84.12 A	SO 11219	
IP II SO 8308	IP I SO 8308	ob42	21°14'00"	A SO 8308	0°00'00"	51.96 A	SO 8308	
IP I SO 8308	PEG (38) SO 7878	ob43	111°26'00"	A SO 8308	0°00'00"	81.53 A	SO 8308	
PEG (38) SO 7878	PEG (30) SO 7878	ob45	181°22'00"	A SO 8308	0°00'00"	18.43 A	SO 7878	
PEG (30) SO 7878	IP (1) SO 7878	ob46	181°22'00"	A SO 8308	0°00'00"	17.36 A	SO 7878	
IP (1) SO 7878	IP IIA SO 7878	ob47	204°07'00"	A SO 7878	0°00'00"	27.64 A	SO 7878	
IP IIA SO 7878	IP III SO 8308	ob48	29°26'40"	A SO 7878	0°00'00"	11.04 A	SO 8308	
IP III SO 8308	IR I SO 11219	ob50	290°26'00"	A SO 8308	0°00'00"	9.77 A	SO 11219	
IP IIA SO 7878	PEG (33) SO 8308	ob49	326°27'00"	A SO 8308	0°00'00"	11.02 A	SO 8308	
IP I SO 8308	PEG (35) SO 8308	ob44	201°55'00"	A SO 8308	0°00'00"	20.28 A	SO 8308	
PEG (33) SO 8308	PEG (37) SO 8308	ob51	291°02'00"	A SO 8308	0°00'00"	87.43 A	SO 8308	Class B
PEG (37) SO 8308	PEG (35) SO 8308	ob53	27°32'00"	A SO 8308	0°00'00"	35.47 A	SO 8308	Class B
IT 4 DP 577064	PEG E DP 577064	ob17	116°14'00"	M		20.86 M		
IT 5 DP 577064	PEG F DP 577064	ob19	87°52'00"	M		12.27 M		
PEG D DP 577064	PEG E DP 577064	ob22	294°35'00"	C		15.18 C		Class B
PEG E DP 577064	PEG F DP 577064	ob54	220°44'00"	C		24.49 C		Class B
PEG 44 SO 435282	UNMK (59) DP 577064	ob29	20°55'00"	A DP 437	0°00'00"	170.86 C		Class B
UNMK (59) DP 577064	UNMK (60) DP 577064	ob75	20°55'00"	A DP 437	0°00'00"	4.13 C		Class B
UNMK (60) DP 577064	PEG G DP 577064	ob76	20°55'00"	A DP 437	0°00'00"	182.16 C		Class B
PEG G DP 577064	PEG H DP 577064	ob56	20°55'00"	A DP 437	0°00'00"	55.97 C		Class B
PEG H DP 577064	UNMK (53) DP 577064	ob57	20°55'00"	A DP 437	0°00'00"	6.04 C		Class B
UNMK (53) DP 577064	PEG (36) DP 437	ob68	20°55'00"	A DP 437	0°00'00"	49.99 C		Class B
PEG (36) DP 437	PEG (33) SO 8308	ob59	28°04'00"	A DP 437	0°00'00"	158.44 A	SO 435282	Class B

# Mark and Vector

Survey Number DP 577064

Meridional Circuit Taranaki 2000

From	To	Code	Bearing	Adpt Surv	Bearing Correction	Distance	Adpt Surv	Class
PEG H DP 577064	PEG A DP 577064	ob58	297°07'40"	C		42.65 C		Class B
PEG A DP 577064	PEG B DP 577064	ob20	282°24'00"	C		9.22 C		Class B
PEG B DP 577064	PEG C DP 577064	ob21	268°23'00"	C		16.78 C		Class B
PEG C DP 577064	UNMK (54) DP 577064	ob23	204°15'00"	C		7.00 C		Class B
UNMK (54) DP 577064	PEG D DP 577064	ob70	204°15'00"	C		10.80 C		Class B
PEG F DP 577064	UNMK (61) DP 577064	ob55	118°58'10"	C		47.39 C		Class B
UNMK (61) DP 577064	PEG G DP 577064	ob77	118°58'10"	C		45.00 C		Class B
IR 2 DP 577064	PEG H DP 577064	ob10	252°47'30"	M		6.95 M		
IT 1 DP 577064	PEG G DP 577064	ob7	10°09'30"	M		5.77 M		
RM 4 SO 435282	RM 3 SO 435282	ob26	323°22'39"	A SO 435282	0°00'00"	419.70 A SO 435282		
RM 3 SO 435282	RS 240 SO 7248	ob60	159°40'10"	A SO 435282	0°00'00"	37.97 A SO 435282		
RS 240 SO 7248	RS 241 SO 7248	ob62	136°33'52"	A SO 7248	0°00'00"	200.12 A SO 7248		
RM 3 SO 435282	PEG 30 SO 435282	ob61	139°50'00"	A SO 435282	0°00'00"	191.53 A SO 435282		
PEG 32 SO 435282	POST 31 SO 435282	ob28	324°03'49"	A SO 435282	0°00'00"	105.95 A SO 435282		Class B
POST 31 SO 435282	PEG 30 SO 435282	ob64	321°58'41"	A SO 435282	0°00'00"	18.27 A SO 435282		Class B
RS 241 SO 7248	PEG LXIV DP 2781	ob63	319°06'00"	A SO 7248	0°00'00"	4.34 A SO 7248		
PEG LXIV DP 2781	IP VI DP 2764	ob65	317°25'40"	A DP 2781	0°00'00"	46.91 A DP 2781		
IP VI DP 2764	PEG (13) DP 2764	ob66	21°47'00"	A DP 2764	0°00'00"	11.15 A DP 2764		
PEG (13) DP 2764	PEG 30 SO 435282	ob67	166°47'30"	A SO 13460	0°00'00"	14.02 A SO 435282		Class BD
PEG (35) SO 8308	UNMK (29) DP 290	ob52	291°26'00"	A DP 290	0°00'00"	687.21 A SO 435282		Class BD
UNMK (53) DP 577064	UNMK (55) DP 577064	ob69	297°07'40"	C		42.78 C		Class B
UNMK (55) DP 577064	UNMK (56) DP 577064	ob71	282°24'00"	C		10.74 C		Class B
UNMK (56) DP 577064	UNMK (57) DP 577064	ob72	268°23'00"	C		21.27 C		Class B
UNMK (57) DP 577064	UNMK (58) DP 577064	ob73	204°15'00"	C		10.76 C		Class B
UNMK (58) DP 577064	UNMK (54) DP 577064	ob74	114°15'00"	C		6.00 C		Class B

# Mark and Vector

Survey Number DP 577064

Meridional Circuit Taranaki 2000

From	To	Code	Bearing	Adpt Surv	Bearing Correction	Distance	Adpt Surv	Class
UNMK (61) DP 577064	UNMK (62) DP 577064	ob78	208°58'10"	C		3.00 C		Class B
UNMK (62) DP 577064	UNMK (63) DP 577064	ob79	118°58'10"	C		43.40 C		Class B
UNMK (63) DP 577064	UNMK (64) DP 577064	ob80	200°55'00"	C		183.02 C		Class B
UNMK (64) DP 577064	UNMK (60) DP 577064	ob81	49°56'00"	C		4.13 C		Class B
UNMK (64) DP 577064	UNMK (65) DP 577064	ob82	229°56'00"	C		8.41 C		Class B
UNMK (65) DP 577064	UNMK (66) DP 577064	ob83	290°55'00"	C		0.71 C		Class B
UNMK (66) DP 577064	UNMK (67) DP 577064	ob84	200°55'00"	C		3.50 C		Class B
UNMK (67) DP 577064	UNMK (68) DP 577064	ob85	110°55'00"	C		3.00 C		Class B
UNMK (68) DP 577064	UNMK (69) DP 577064	ob86	20°55'00"	C		3.50 C		Class B
UNMK (69) DP 577064	UNMK (59) DP 577064	ob87	49°56'00"	C		7.82 C		Class B

Mark Name	Mark Condition	Description
IR 2 DP 577064		Flush in sealed driveway
IR 3 DP 577064		flush in sealed driveway
IR 7 SO 435282		d 0.3 in paddock
IT 1 DP 577064		d 0.3 in paddock
IT 4 DP 577064		flush in crack in conc slab behind nib
IT 5 DP 577064		d 0.2 in paddock
IT 6 SO 435282		d 0.3, 0.8 from fence
IT CHECK SO 7878		d 0.35 on ridge

\*\*\* End of Report \*\*\*

# Schedule / Memorandum

Land Registration District

**Taranaki**

Plan Number

**DP 577064**

Territorial Authority

**South Taranaki District Council**

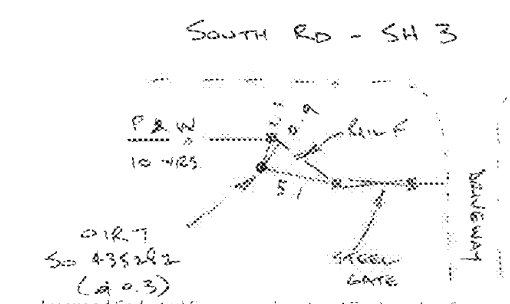
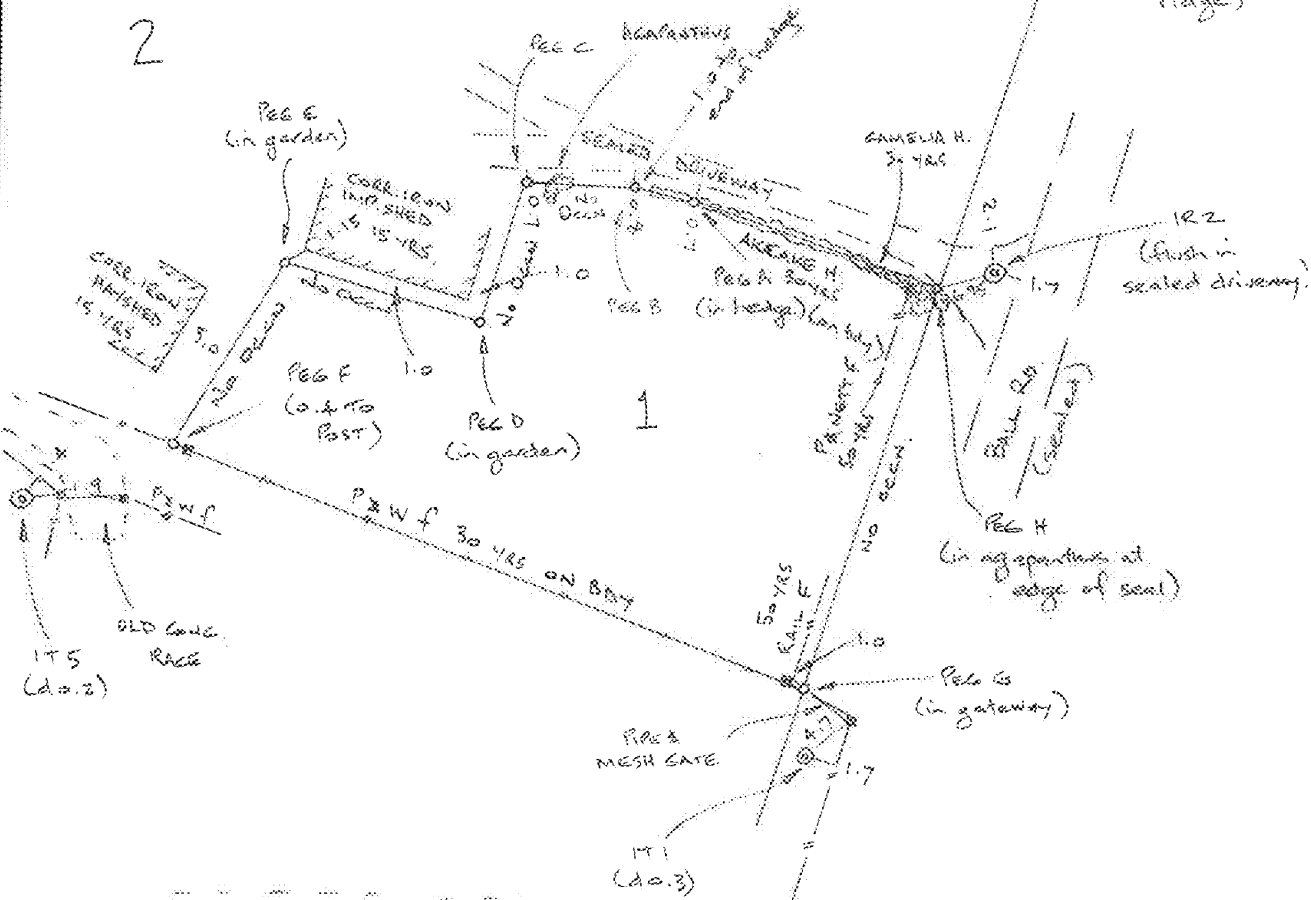
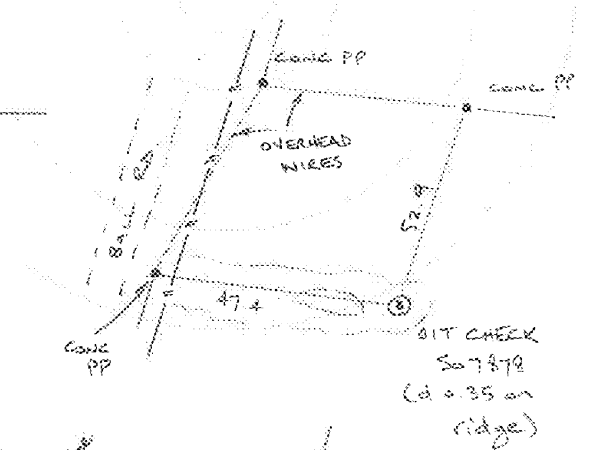
Memorandum of Easements (Pursuant to s243 Resource Management Act 1991)			
Purpose	Shown	Burdened Land (Servient Tenement)	Benefited Land (Dominant Tenement)
Right of Way	A	Lot 2 hereon	Lot 1 hereon
Right to convey Water	B, C	Lot 2 hereon	Lot 1 hereon
Right to convey Electricity	C	Lot 2 hereon	Lot 1 hereon

Occupation Diagram

Occupation & P&W Diagram

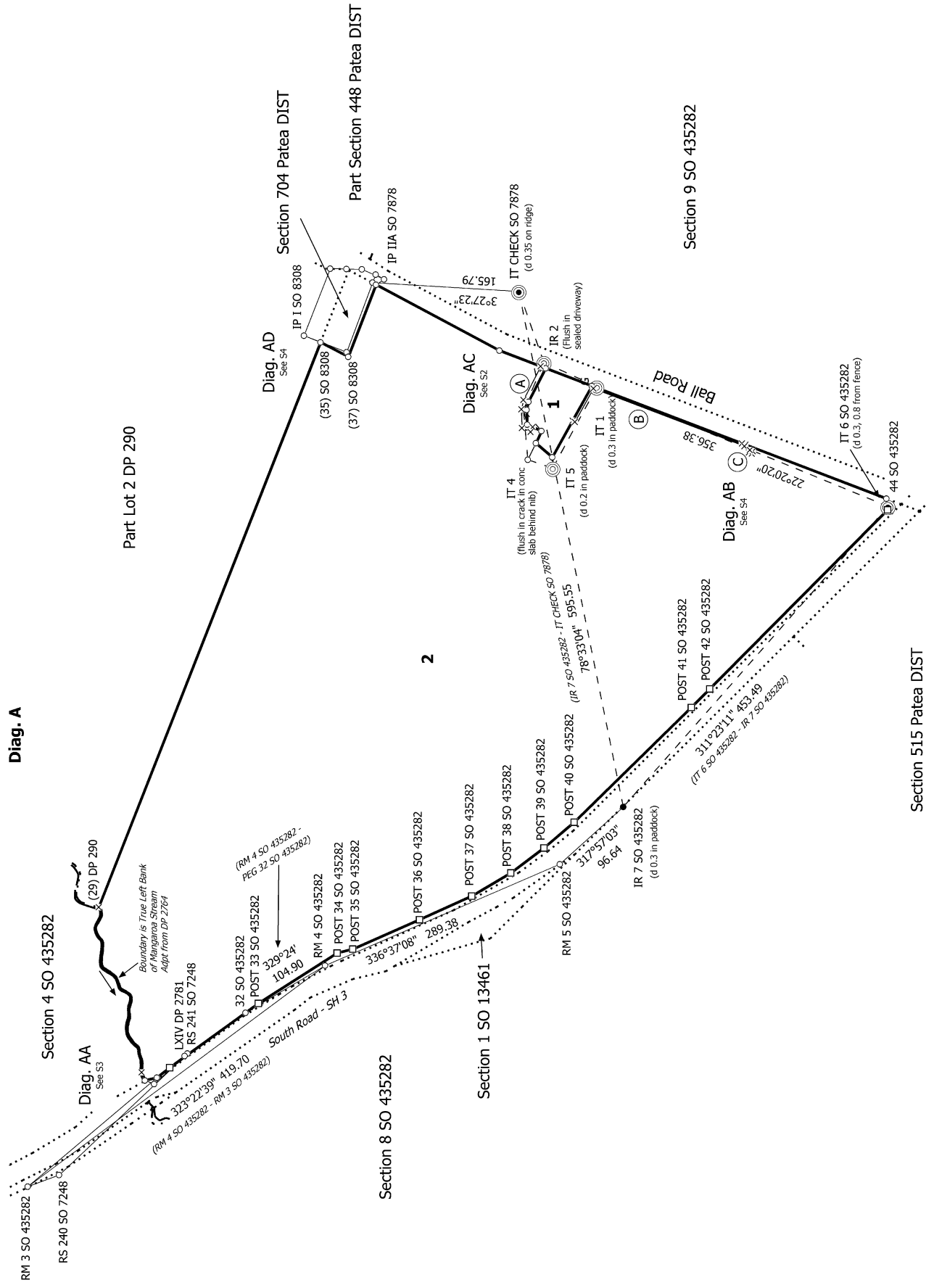
NOT TO SCALE

pat sole surveyors limited



Licensed Cadastral Surveyors, Land and Engineering Surveyors  
 PO Box 906 New Plymouth 4340 • 73 Dawson St • phone 06 759 4689 • email pat@patsole.co.nz





S 1/4

Record of Survey  
DP 577064  
Deposited on: 2/06/2023

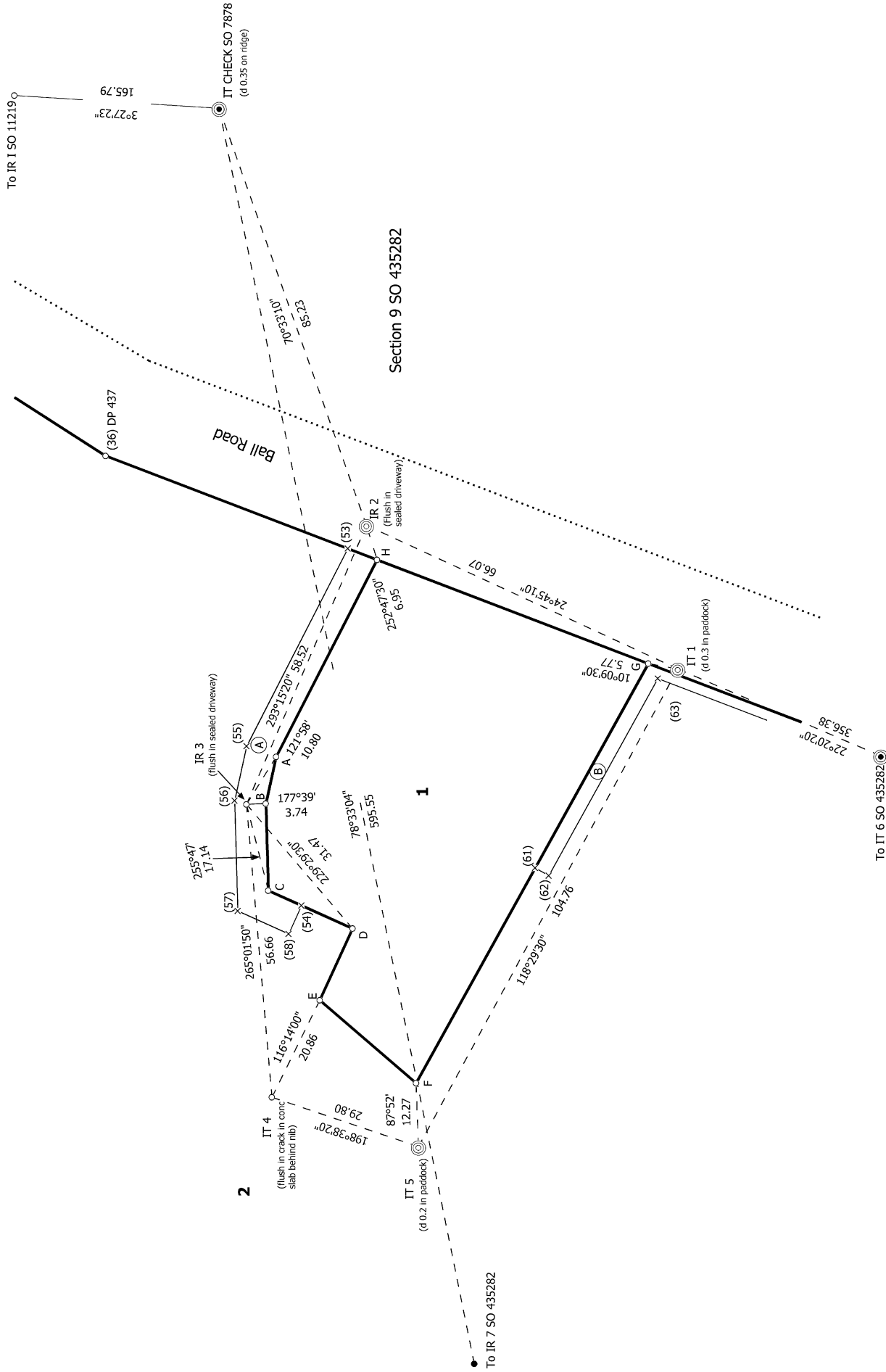
Surveyor: Patrick Ray Sole  
Firm: Pat Sole Surveyors Ltd  
Date of Survey: 19/05/2022

LOTS 1 AND 2 BEING SUBDIVISION OF SECTIONS 6 AND 7 SO 435282

Land District: Taranaki  
**Digitally Generated Plan**  
Generated on: 24/06/2023 09:21 am | Page 9 of 15



Diag. AC

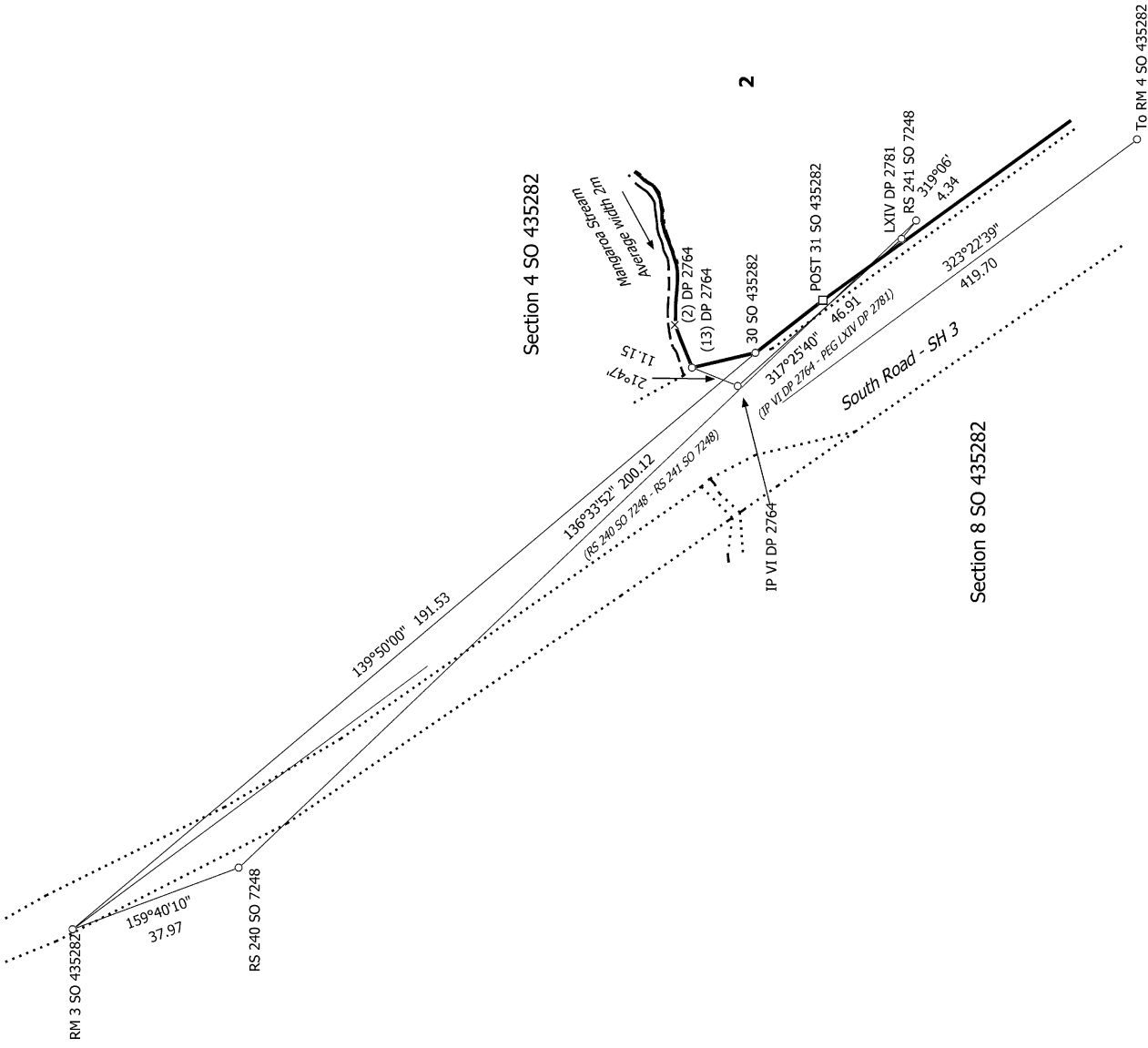


S 2/4

Land District: Taranaki	Surveyor: Patrick Ray Sole Firm: Pat Sole Surveyors Ltd Date of Survey: 19/05/2022	Record of Survey DP 577064	Deposited on: 2/06/2023
<p>LOTS 1 AND 2 BEING SUBDIVISION OF SECTIONS 6 AND 7 SO 435282</p> <p>Digitally Generated Plan Generated on: 24/06/2023 09:21 am   Page 10 of 15</p>			



Diag. AA



S 3/4

Land District: Taranaki

Digitally Generated Plan

Generated on: 24/06/2023 09:21 am | Page 11 of 15

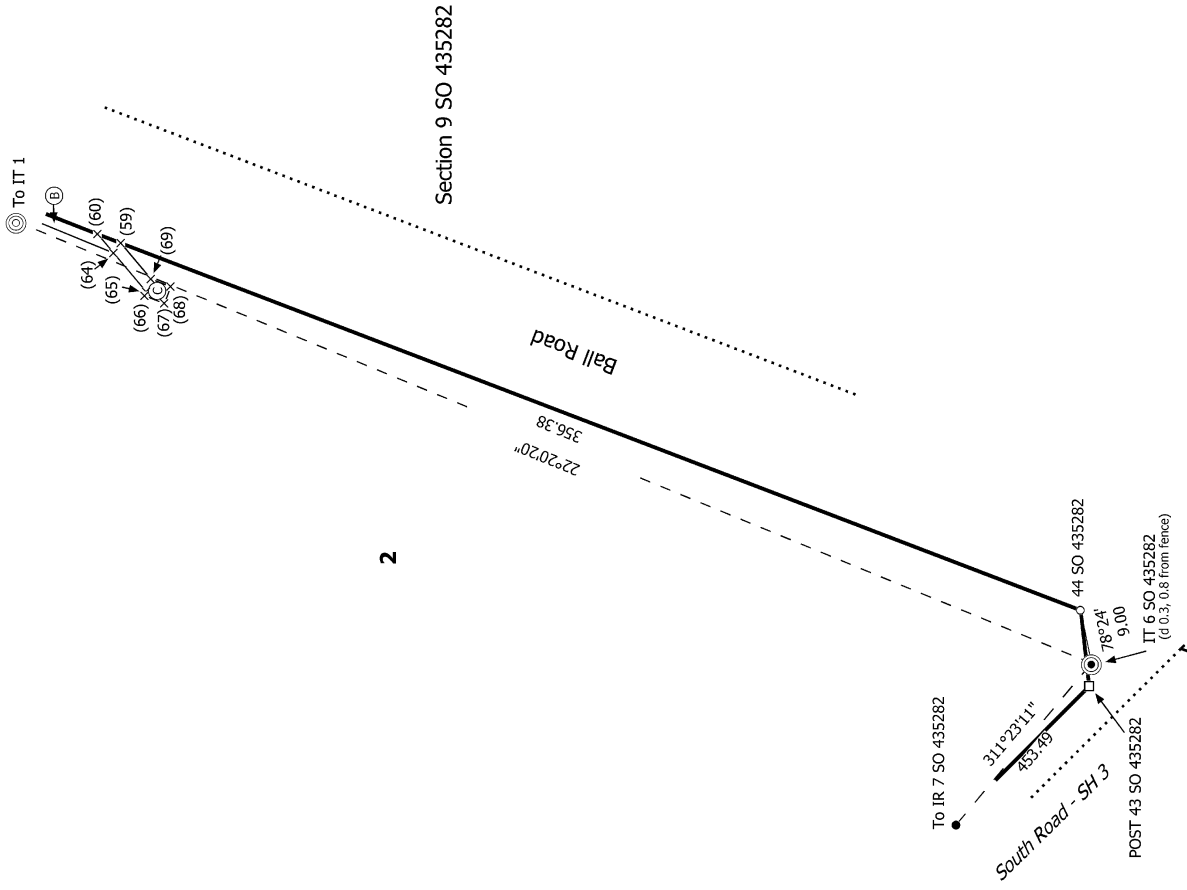
LOTS 1 AND 2 BEING SUBDIVISION OF SECTIONS 6 AND 7 SO 435282

Surveyor: Patrick Ray Sole  
Firm: Pat Sole Surveyors Ltd  
Date of Survey: 19/05/2022

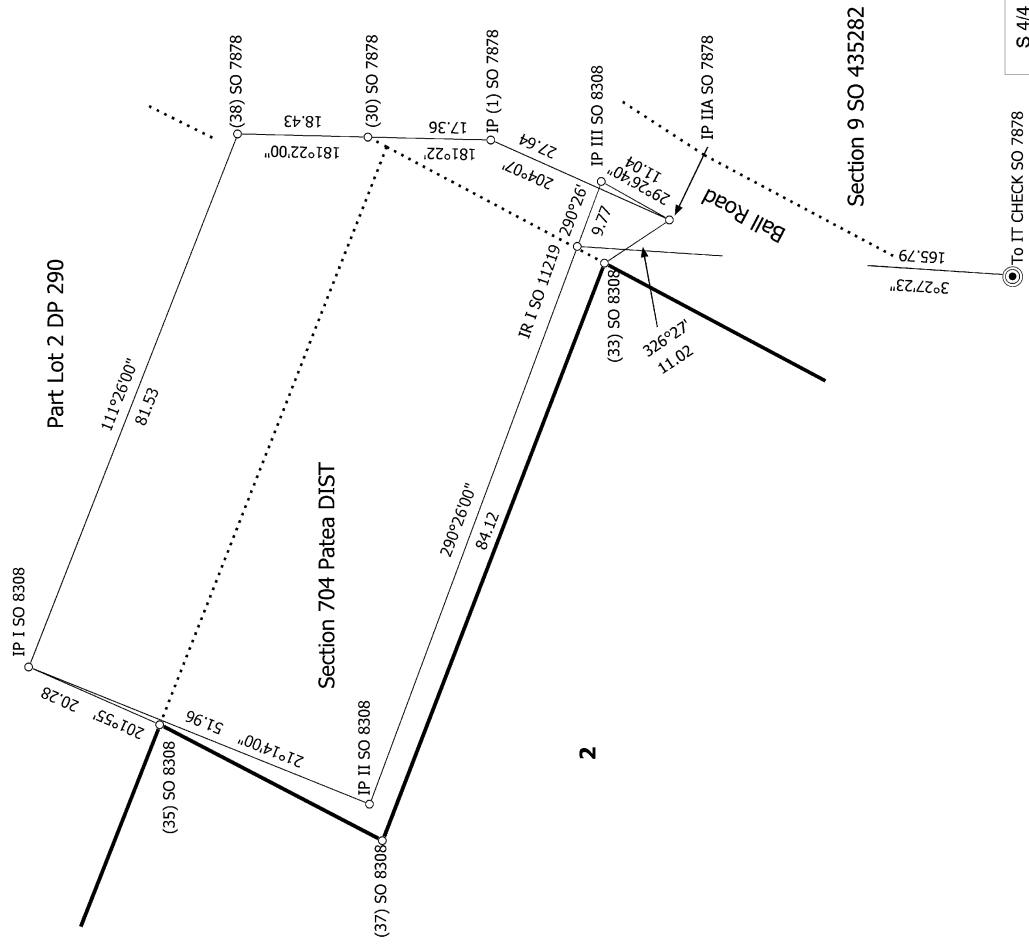
Record of Survey  
DP 577064

Deposited on: 2/06/2023

Diag. AB



Diag. AD



Land District: Taranaki

Digitally Generated Plan

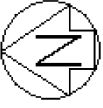
Generated on: 24/06/2023 09:21:am Page 12 of 15

LOTS 1 AND 2 BEING SUBDIVISION OF SECTIONS 6 AND 7 SO 435282

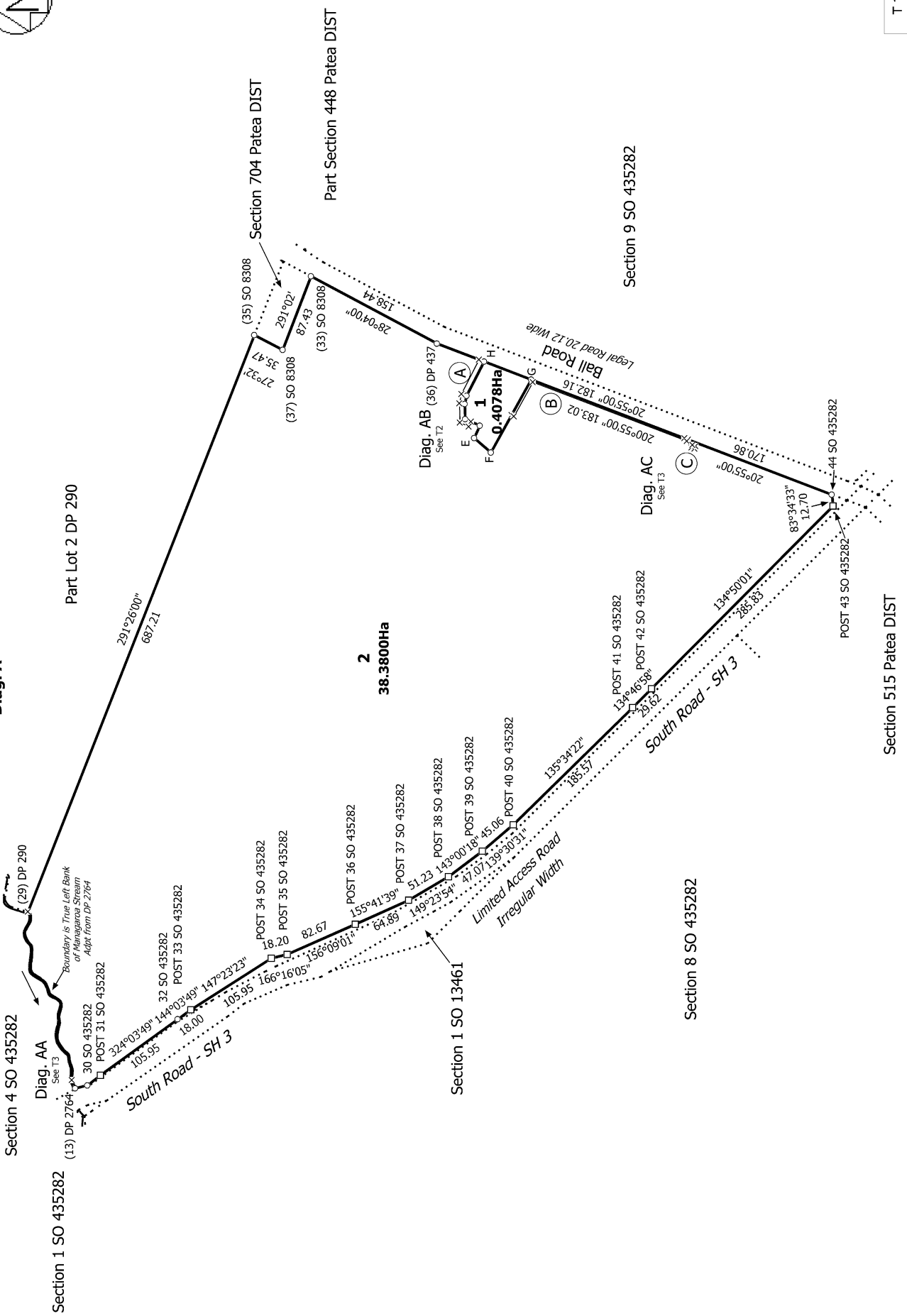
Surveyor: Patrick Ray Sole  
 Firm: Pat Sole Surveyors Ltd  
 Date of Survey: 19/05/2022

Record of Survey  
 DP 577064  
 Deposited on: 2/06/2023

S 4/4

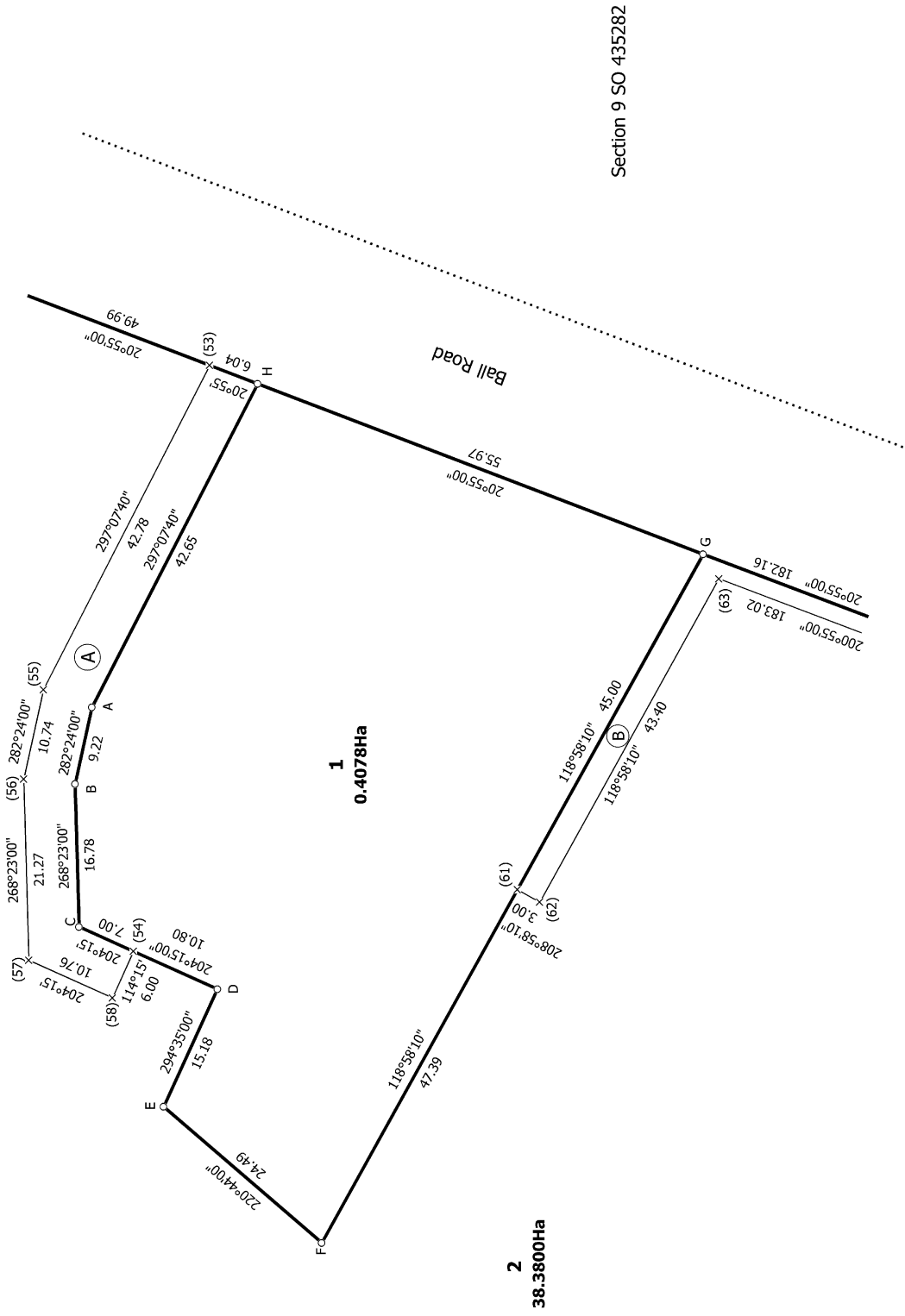
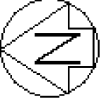


Diag. A

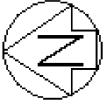


Section 515 Patea DIST

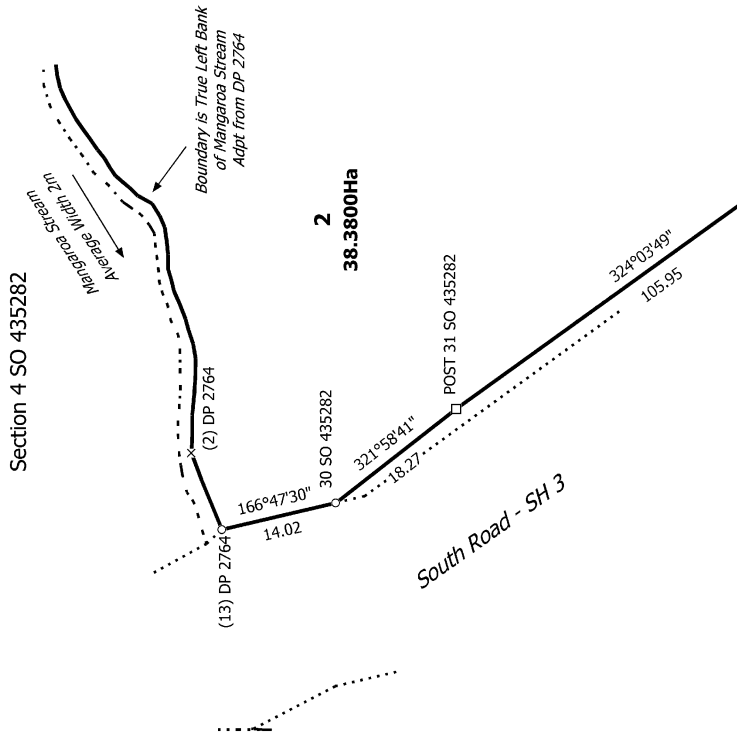
Diag. AB



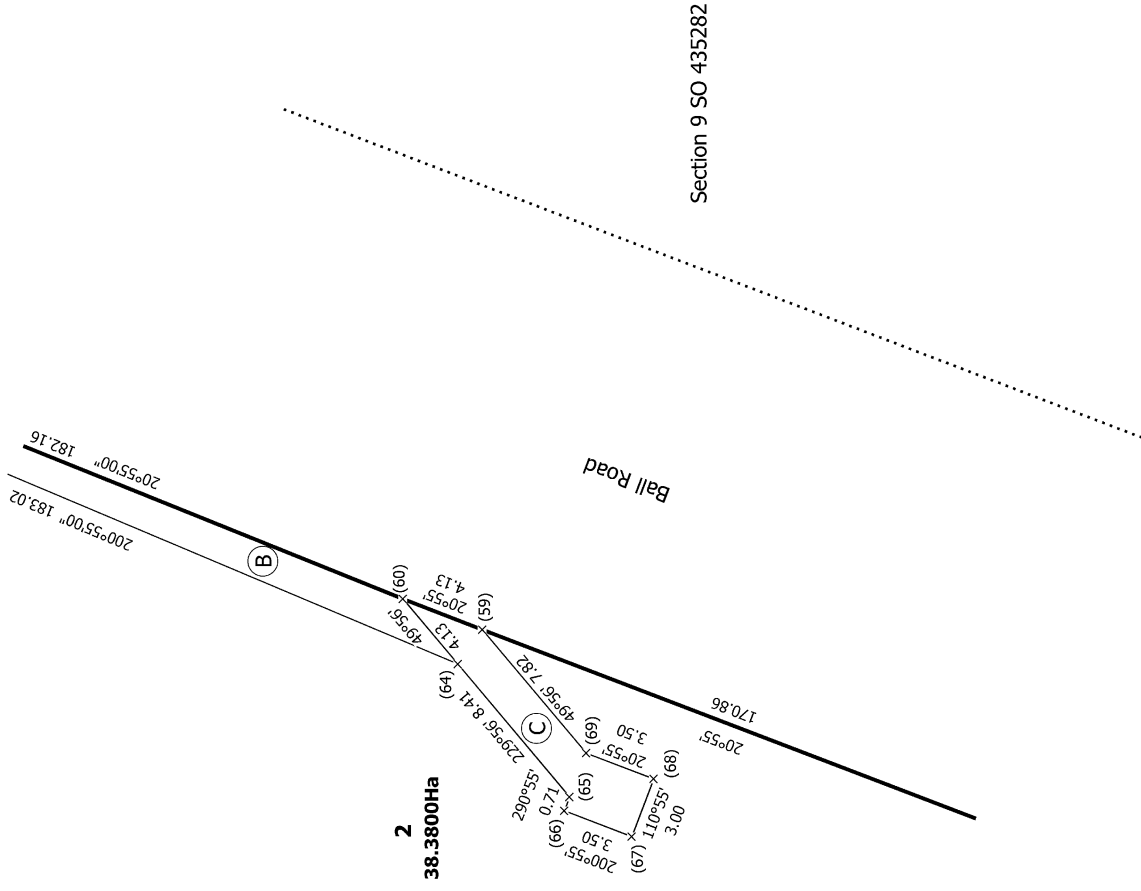
Land District: Taranaki <b>Digitally Generated Plan</b> Generated on: 24/06/2023 09:21 am   Page 14 of 15	LOTS 1 AND 2 BEING SUBDIVISION OF SECTIONS 6 AND 7 SO 435282	Surveyor: Patrick Ray Sole Firm: Pat Sole Surveyors Ltd Date of Survey: 19/05/2022	Record of Survey DP 577064 Deposited on: 2/06/2023
---	--	--	--



Diag. AA



Diag. AC



T 3/3

Land District: Taranaki

Digitally Generated Plan

Generated on: 24/06/2023 09:21 am | Page 15 of 15

LOTS 1 AND 2 BEING SUBDIVISION OF SECTIONS 6 AND 7 SO 435282

Surveyor: Patrick Ray Sole

Firm: Pat Sole Surveyors Ltd

Date of Survey: 19/05/2022

Record of Survey

DP 577064

Deposited on: 2/06/2023