

Record of Survey - DP 575283

Survey Number DP 575283
Surveyor Reference 22531 - 32 Brookvale Lane
Surveyor Richard Keith Bromley
Survey Firm Horizon Surveying and Land Development Limited
Surveyor Declaration I Richard Keith Bromley, being a licensed cadastral surveyor, certify that--
 (a) this dataset provided by me and its related survey are accurate, correct and in accordance with the Cadastral Survey Act 2002 and Cadastral Survey Rules 2021; and
 (b) the survey was undertaken by me or under my personal direction.
 Declared on 30 Aug 2022 04:58 PM

Survey Details

Dataset Description Lots 1-3 being a Subdivision of Lot 8 DP 65644
Purpose LT Subdivision
Status Deposited **Type** Survey
Land District North Auckland **Survey Class** Class B
Meridional Circuit Mount Eden 2000 **Vertical Datum** None

Survey Dates

Surveyed Date 05/04/2022 **Certified Date** 30/08/2022
Submitted Date 30/08/2022 16:58:01 **Survey Approval Date** 01/09/2022
Deposit Date 01/03/2024

Referenced Surveys

Survey Number	Land District	Bearing Correction
DP 97287	North Auckland	0°00'00"
DP 180423	North Auckland	0°00'00"
DP 65644	North Auckland	-0°02'00"
DP 308753	North Auckland	0°00'00"

Territorial Authorities

Auckland Council

Comprised In

RT NA24C/321

Created Parcels

Parcels	Parcel Intent	Area	RT Reference
Lot 1 Deposited Plan 575283	Fee Simple Title	1.4387 Ha	1055066
Lot 2 Deposited Plan 575283	Fee Simple Title	2.2583 Ha	1055067
Lot 3 Deposited Plan 575283	Vesting on Deposit for Local Purpose Reserve	0.6499 Ha	1055068
Area A Deposited Plan 575283	Easement		
Area B Deposited Plan 575283	Easement		
Area C Deposited Plan 575283	Easement		



Record of Survey - DP 575283

Created Parcels

Parcels	Parcel Intent	Area	RT Reference
Area D Deposited Plan 575283	Easement		
Total Area		<hr/> 4.3469 Ha	

Mark and Vector

Survey Number DP 575283

Meridional Circuit Mount Eden 2000

From	To	Code	Bearing	Adpt Surv	Bearing Correction	Distance	Adpt Surv	Class
IS VI DP 65644	IS VIA DP 65644	ob0	0°11'20" M			59.28 M		
IS VIA DP 65644	IS VII DP 65644	ob3	0°11'20" M			113.68 M		
IS VII DP 65644	IS VIIA DP 65644	ob5	0°11'20" A	DP 65644	-0°02'00"	79.16 A	DP 65644	
IS VIIA DP 65644	IT VIII DP 65644	ob6	0°11'20" A	DP 65644	-0°02'00"	67.15 A	DP 65644	
IT VIII DP 65644	IS IX DP 65644	ob8	100°22'00" A	DP 65644	-0°02'00"	107.20 A	DP 65644	
IS IX DP 65644	IS X DP 65644	ob9	100°22'00" A	DP 65644	-0°02'00"	99.94 A	DP 65644	
IS X DP 65644	IS XI DP 65644	ob10	229°48'10" A	DP 65644	-0°02'00"	45.34 A	DP 65644	
IS XI DP 65644	PEG DP 65644	ob11	152°28'00" A	DP 65644	-0°02'00"	0.64 A	DP 65644	
PEG DP 65644	UNMK (53) DP 65644	ob14	152°28'00" A	DP 65644	-0°02'00"	34.80 A	DP 65644	
UNMK (53) DP 65644	UNMK (54) DP 65644	ob101	152°28'00" A	DP 65644	-0°02'00"	11.67 A	DP 65644	
UNMK (54) DP 65644	UNMK (55) DP 65644	ob103	152°28'00" A	DP 65644	-0°02'00"	12.87 A	DP 65644	
UNMK (55) DP 65644	IT XII DP 65644	ob105	152°28'00" A	DP 65644	-0°02'00"	31.09 A	DP 65644	
IT XII DP 65644	UNMK (56) DP 65644	ob16	194°09'50" A	DP 65644	-0°02'00"	27.76 A	DP 65644	
UNMK (56) DP 65644	UNMK (57) DP 65644	ob107	194°09'50" A	DP 65644	-0°02'00"	15.29 A	DP 65644	
UNMK (57) DP 65644	UNMK (58) DP 65644	ob109	194°09'50" A	DP 65644	-0°02'00"	19.71 A	DP 65644	
UNMK (58) DP 65644	IS XIII DP 65644	ob111	194°09'50" A	DP 65644	-0°02'00"	17.28 A	DP 65644	
IS XIII DP 65644	UNMK (59) DP 65644	ob30	122°01'20" A	DP 65644	-0°02'00"	7.44 A	DP 65644	
UNMK (59) DP 65644	UNMK (60) DP 65644	ob113	122°01'20" A	DP 65644	-0°02'00"	18.11 A	DP 65644	
UNMK (60) DP 65644	UNMK (61) DP 65644	ob115	122°01'20" A	DP 65644	-0°02'00"	24.94 A	DP 65644	
UNMK (61) DP 65644	IS XIV DP 65644	ob117	122°01'20" A	DP 65644	-0°02'00"	13.70 A	DP 65644	
IS XIV DP 65644	PEG (20) DP 65644	ob38	183°15'00" A	DP 65644	-0°02'00"	0.99 A	DP 65644	
PEG (20) DP 65644	IS XV DP 65644	ob36	183°15'00" A	DP 65644	-0°02'00"	175.06 A	DP 65644	
IS XV DP 65644	IS II DP 65644	ob44	193°03'00" A	DP 65644	-0°02'00"	70.17 A	DP 65644	
IS II DP 65644	IT IIA DP 65644	ob45	300°06'40" A	DP 65644	-0°02'00"	25.97 A	DP 65644	
IT IIA DP 65644	IS III DP 65644	ob46	300°06'40" A	DP 65644	-0°02'00"	42.45 A	DP 65644	
IS III DP 65644	IS IIIA DP 65644	ob49	289°11'50" A	DP 65644	-0°02'00"	56.77 A	DP 65644	
IS IIIA DP 65644	IS IV DP 65644	ob51	289°11'50" A	DP 65644	-0°02'00"	34.70 A	DP 65644	

Mark and Vector

Survey Number DP 575283

Meridional Circuit Mount Eden 2000

From	To	Code	Bearing	Adpt Surv	Bearing Correction	Distance	Adpt Surv	Class
IS IV DP 65644	IS V DP 65644	ob53	265°06'20"	A DP 65644	-0°02'00"	76.38 A	DP 65644	
IS V DP 65644	IS VI DP 65644	ob54	0°11'20"	A DP 65644	-0°02'00"	125.93 A	DP 65644	
IS XI DP 65644	IT XII DP 65644	ob12	152°28'00"	M		91.07 M		
IT XII DP 65644	IS XIII DP 65644	ob17	194°10'00"	M		80.04 M		
IS XIII DP 65644	IS XIV DP 65644	ob31	122°01'20"	M		64.19 M		
IS XIV DP 65644	IS XV DP 65644	ob39	183°15'00"	M		176.05 M		
IS XIV DP 65644	IS VI DP 65644	ob40	256°16'30"	M		254.41 M		
IS VI DP 65644	IS 2 DP 575283	ob1	3°50'30"	M		101.49 M		
IS 2 DP 575283	IS VII DP 65644	ob149	355°03'10"	M		71.99 M		
IS 2 DP 575283	IS 1 DP 575283	ob150	55°30'30"	M		93.66 M		
IS 1 DP 575283	IT XII DP 65644	ob153	82°08'10"	M		129.53 M		
IS VIIA DP 65644	PEG (21) DP 65644	ob7	89°59'30"	A DP 65644	-0°02'00"	2.35 A	DP 65644	
PEG (21) DP 65644	PEG (22A) DP 65644	ob55	89°59'30"	A DP 65644	-0°02'00"	5.03 A	DP 65644	Class B
PEG (22A) DP 65644	UNMK 65 DP 575283	ob57	89°59'30"	A DP 65644	-0°02'00"	149.40 C		Class B
UNMK 65 DP 575283	PEG DP 65644	ob125	89°59'30"	A DP 65644	-0°02'00"	12.86 C		Class B
PEG (21) DP 65644	PEG (23) DP 65644	ob56	179°59'30"	A DP 65644	-0°02'00"	248.89 A	DP 65644	
PEG (23) DP 65644	IS VI DP 65644	ob58	224°47'00"	A DP 65644	-0°02'00"	4.57 A	DP 65644	
IS VI DP 65644	PEG (24) DP 65644	ob2	76°38'40"	A DP 65644	-0°02'00"	8.47 A	DP 65644	
PEG (24) DP 65644	PEG (25) DP 65644	ob60	359°59'10"	A DP 65644	-0°02'00"	57.33 A	DP 65644	Class B
PEG (25) DP 65644	PEG 67 DP 575283	ob61	89°59'10"	A DP 65644	-0°02'00"	230.76 C		Class B
PEG 67 DP 575283	PEG (20) DP 65644	ob129	89°59'10"	A DP 65644	-0°02'00"	8.03 C		Class B
IS VIA DP 65644	PEG (25) DP 65644	ob4	89°59'10"	A DP 65644	-0°02'00"	8.05 A	DP 65644	
PEG (25) DP 65644	PEG (22A) DP 65644	ob62	359°59'10"	A DP 65644	-0°02'00"	192.84 A	DP 65644	
IS 2 DP 575283	PEG 116 DP 575283	ob151	196°08'00"	M		12.75 M		
IS 2 DP 575283	PEG 117 DP 575283	ob152	172°46'00"	M		11.81 M		
IS 1 DP 575283	PEG 118 DP 575283	ob154	186°43'00"	M		57.86 M		
IS 1 DP 575283	PEG 119 DP 575283	ob155	311°36'00"	M		9.07 M		

Mark and Vector

Survey Number DP 575283

Meridional Circuit Mount Eden 2000

From	To	Code	Bearing	Adpt Surv	Bearing Correction	Distance	Adpt Surv	Class
IS XIV DP 65644	PEG 99 DP 575283	ob41	287°38'00" M			12.05 M		
IS XIV DP 65644	PEG 67 DP 575283	ob42	263°01'00" M			8.15 M		
IS XIII DP 65644	PEG 100 DP 575283	ob32	141°53'00" M			22.85 M		
IS XIII DP 65644	PEG 101 DP 575283	ob33	301°46'00" M			9.99 M		
IS XIII DP 65644	PEG 102 DP 575283	ob34	321°32'00" M			19.86 M		
IS XIII DP 65644	PEG 103 DP 575283	ob35	350°36'00" M			34.09 M		
IT XII DP 65644	PEG 104 DP 575283	ob18	224°03'00" M			31.52 M		
IT XII DP 65644	PEG 105 DP 575283	ob19	238°04'00" M			18.47 M		
IT XII DP 65644	PEG 106 DP 575283	ob20	286°03'00" M			13.37 M		
IT XII DP 65644	PEG 107 DP 575283	ob21	324°53'00" M			27.89 M		
IT XII DP 65644	PEG 108 DP 575283	ob22	317°07'00" M			44.07 M		
IT XII DP 65644	PEG 109 DP 575283	ob23	322°18'00" M			57.08 M		
IT XII DP 65644	PEG 110 DP 575283	ob24	320°49'00" M			80.96 M		
IT XII DP 65644	PEG 111 DP 575283	ob25	325°36'00" M			96.58 M		
PEG (23) DP 65644	PEG 116 DP 575283	ob59	359°59'30" A	DP 65644	-0°02'00"	85.75 C		Class B
PEG 116 DP 575283	UNMK 120 DP 575283	ob156	359°59'30" A	DP 65644	-0°02'00"	1.51 C		Class B
UNMK 120 DP 575283	PEG (21) DP 65644	ob162	359°59'30" A	DP 65644	-0°02'00"	161.59 C		Class B
PEG (25) DP 65644	PEG 117 DP 575283	ob63	359°59'30" A	DP 65644	-0°02'00"	30.25 C		Class B
PEG 117 DP 575283	UNMK 121 DP 575283	ob158	359°59'30" A	DP 65644	-0°02'00"	1.51 C		Class B
UNMK 121 DP 575283	PEG (22A) DP 65644	ob164	359°59'30" A	DP 65644	-0°02'00"	161.08 C		Class B
PEG 116 DP 575283	PEG 117 DP 575283	ob157	83°58'00" C			5.06 C		Class B
PEG 117 DP 575283	PEG 118 DP 575283	ob159	83°58'40" C			69.31 C		Class B
PEG 118 DP 575283	UNMK 122 DP 575283	ob160	359°59'20" C			1.51 C		Class B
UNMK 122 DP 575283	PEG 119 DP 575283	ob166	359°59'20" C			61.97 C		Class B

Mark and Vector

Survey Number DP 575283

Meridional Circuit Mount Eden 2000

From	To	Code	Bearing	Adpt Surv	Bearing Correction	Distance	Adpt Surv	Class
PEG 119 DP 575283	PEG 105 DP 575283	ob161	89°05'00"	C		119.42 C		Class B
PEG 67 DP 575283	PEG 99 DP 575283	ob130	323°48'00"	C		5.75 C		Class B
PEG 99 DP 575283	PEG 100 DP 575283	ob136	293°17'00"	C		31.39 C		Class B
PEG 100 DP 575283	PEG 101 DP 575283	ob137	315°48'00"	C		32.41 C		Class B
PEG 101 DP 575283	PEG 102 DP 575283	ob138	339°26'00"	C		10.99 C		Class B
PEG 102 DP 575283	PEG 103 DP 575283	ob139	20°34'00"	C		19.31 C		Class B
PEG 103 DP 575283	PEG 104 DP 575283	ob140	8°38'00"	C		21.57 C		Class B
PEG 104 DP 575283	PEG 105 DP 575283	ob141	25°51'00"	C		14.32 C		Class B
PEG 105 DP 575283	PEG 106 DP 575283	ob142	11°51'00"	C		13.76 C		Class B
PEG 106 DP 575283	PEG 107 DP 575283	ob143	350°31'00"	C		19.38 C		Class B
PEG 107 DP 575283	PEG 108 DP 575283	ob144	304°12'00"	C		16.86 C		Class B
PEG 108 DP 575283	PEG 109 DP 575283	ob145	339°06'00"	C		13.78 C		Class B
PEG 109 DP 575283	PEG 110 DP 575283	ob146	317°17'00"	C		23.94 C		Class B
PEG 110 DP 575283	PEG 111 DP 575283	ob147	348°36'00"	C		17.28 C		Class B
PEG 111 DP 575283	UNMK 65 DP 575283	ob148	348°36'00"	C		0.50 C		Class B
PEG (20) DP 65644	UNMK (22) DP 65644	ob37	89°59'10"	A DP 65644	-0°02'00"	17.70 A DP 65644		Class BD
PEG DP 65644	UNMK (27) DP 65644	ob15	89°59'10"	A DP 65644	-0°02'00"	7.64 A DP 65644		Class BD
IT IIA DP 65644	IS XLIX DP 61574	ob47	213°48'30"	A DP 180423	0°00'00"	35.52 A DP 180423		
IS XLIX DP 61574	IT II DP 180423	ob65	137°48'20"	A DP 180423	0°00'00"	68.78 A DP 180423		
IT II DP 180423	IS I DP 61574	ob66	36°09'00"	A DP 65644	-0°02'00"	34.10 A DP 65644		
IS I DP 61574	IS I DP 65644	ob70	29°46'00"	A DP 65644	-0°02'00"	22.47 A DP 65644		
IS I DP 65644	IS II DP 65644	ob71	300°06'40"	A DP 65644	-0°02'00"	40.76 A DP 65644		
IT II DP 180423	IT I DP 97287	ob67	216°09'10"	A DP 97287	0°00'00"	203.67 A DP 97287		
IT II DP 180423	IS IV DP 308753	ob68	216°09'10"	A DP 308753	0°00'00"	340.12 A DP 308753		
IT II DP 180423	IT V DP 61574	ob69	216°09'10"	A DP 308753	0°00'00"	360.61 A DP 308753		
IS I DP 65644	IT III DP 60664	ob72	29°46'00"	A DP 65644	-0°02'00"	92.88 A DP 65644		
IT III DP 60664	IS IV DP 60664	ob89	34°28'30"	A DP 65644	-0°02'00"	119.47 A DP 65644		
IS IV DP 60664	IS XIII DP 65644	ob90	303°56'30"	A DP 65644	-0°02'00"	214.04 A DP 65644		

Mark and Vector

Survey Number DP 575283

Meridional Circuit Mount Eden 2000

From	To	Code	Bearing	Adpt Surv	Bearing Correction	Distance	Adpt Surv	Class
IS I DP 65644	PEG (2) DP 65644	ob73	309°52'00"	A DP 65644	-0°02'00"	19.98 A	DP 65644	
PEG (2) DP 65644	PEG (1) DP 65644	ob91	88°46'00"	A DP 65644	-0°02'00"	9.07 A	DP 65644	
PEG (1) DP 65644	IS I DP 65644	ob92	154°16'00"	A DP 65644	-0°02'00"	14.42 A	DP 65644	
PEG (1) DP 65644	PEG (48) DP 65644	ob93	214°54'00"	A DP 65644	-0°02'00"	4.04 A	DP 65644	
PEG (48) DP 65644	PEG (49) DP 65644	ob94	214°54'00"	A DP 65644	-0°02'00"	2.03 A	DP 65644	Class B
PEG (49) DP 65644	PEG (50) DP 65644	ob96	280°21'00"	A DP 65644	-0°02'00"	7.85 A	DP 65644	Class B
PEG (50) DP 65644	PEG (51) DP 65644	ob97	32°15'30"	A DP 65644	-0°02'00"	1.99 A	DP 65644	
PEG (51) DP 65644	PEG (2) DP 65644	ob99	32°15'30"	A DP 65644	-0°02'00"	1.99 A	DP 65644	
IT IIA DP 65644	PEG (41) DP 65644	ob48	46°42'00"	A DP 65644	-0°02'00"	16.96 A	DP 65644	
PEG (41) DP 65644	PEG (42) DP 65644	ob84	214°58'00"	A DP 65644	-0°02'00"	2.90 A	DP 65644	
PEG (42) DP 65644	PEG (43) DP 65644	ob86	214°58'00"	A DP 65644	-0°02'00"	17.34 A	DP 65644	
PEG (43) DP 65644	IT IIA DP 65644	ob88	351°30'00"	A DP 65644	-0°02'00"	5.00 A	DP 65644	
IS III DP 65644	PEG (38) DP 65644	ob50	39°07'00"	A DP 65644	-0°02'00"	15.21 A	DP 65644	
PEG (38) DP 65644	PEG (39) DP 65644	ob79	203°51'00"	A DP 65644	-0°02'00"	2.88 A	DP 65644	
PEG (39) DP 65644	PEG (10) DP 65644	ob81	203°51'00"	A DP 65644	-0°02'00"	17.30 A	DP 65644	
PEG (10) DP 65644	IS III DP 65644	ob83	347°48'00"	A DP 65644	-0°02'00"	6.82 A	DP 65644	
IS IIIA DP 65644	PEG (35) DP 65644	ob52	36°21'00"	A DP 65644	-0°02'00"	14.92 A	DP 65644	
PEG (35) DP 65644	PEG (36) DP 65644	ob74	213°32'20"	A DP 65644	-0°02'00"	2.96 A	DP 65644	
PEG (36) DP 65644	PEG (37) DP 65644	ob76	213°32'20"	A DP 65644	-0°02'00"	17.80 A	DP 65644	
PEG (37) DP 65644	IS IIIA DP 65644	ob78	26°30'00"	A DP 65644	-0°02'00"	5.91 A	DP 65644	
PEG (48) DP 65644	PEG (51) DP 65644	ob95	280°21'00"	A DP 65644	-0°02'00"	7.97 A	DP 65644	Class B
PEG (51) DP 65644	PEG (41) DP 65644	ob100	319°33'00"	A DP 65644	-0°02'00"	44.66 A	DP 65644	Class B
PEG (50) DP 65644	PEG (42) DP 65644	ob98	318°23'00"	A DP 65644	-0°02'00"	44.54 A	DP 65644	Class B
PEG (41) DP 65644	PEG (38) DP 65644	ob85	298°32'00"	A DP 65644	-0°02'00"	44.94 A	DP 65644	Class B

Mark and Vector

Survey Number DP 575283

Meridional Circuit Mount Eden 2000

From	To	Code	Bearing	Adpt Surv	Bearing Correction	Distance	Adpt Surv	Class
PEG (42) DP 65644	PEG (39) DP 65644	ob87	298°32'00"	A DP 65644	-0°02'00"	44.36 A	DP 65644	Class B
PEG (38) DP 65644	PEG (35) DP 65644	ob80	289°10'00"	A DP 65644	-0°02'00"	57.53 A	DP 65644	Class B
PEG (39) DP 65644	PEG (36) DP 65644	ob82	289°10'00"	A DP 65644	-0°02'00"	58.02 A	DP 65644	Class B
PEG (35) DP 65644	PEG (24) DP 65644	ob75	317°54'40"	A DP 65644	-0°02'00"	162.72 A	DP 65644	Class B
PEG (36) DP 65644	PEG (23) DP 65644	ob77	317°54'40"	A DP 65644	-0°02'00"	167.79 A	DP 65644	Class B
UNMK 120 DP 575283	UNMK 121 DP 575283	ob163	83°58'00"	C		5.06 C		Class B
UNMK 121 DP 575283	UNMK 122 DP 575283	ob165	83°58'40"	C		69.31 C		Class B
IS XI DP 65644	UNMK (52) DP 65644	ob13	139°48'10"	A DP 65644	-0°02'00"	8.25 A	DP 65644	
UNMK (53) DP 65644	UNMK (68) DP 65644	ob102	62°28'00"	A DP 65644	-0°02'00"	12.47 A	DP 65644	
UNMK (68) DP 65644	UNMK (70) DP 65644	ob131	62°28'00"	A DP 65644	-0°02'00"	12.27 A	DP 65644	
UNMK (70) DP 65644	UNMK (53) DP 65644	ob133	242°28'00"	A DP 65644	-0°02'00"	24.74 A	DP 65644	
UNMK (68) DP 65644	UNMK (69) DP 65644	ob132	332°28'00"	A DP 65644	-0°02'00"	11.06 A	DP 65644	
UNMK (54) DP 65644	UNMK (71) DP 65644	ob104	62°28'00"	A DP 65644	-0°02'00"	9.45 A	DP 65644	
UNMK (55) DP 65644	UNMK (72) DP 65644	ob106	62°28'00"	A DP 65644	-0°02'00"	14.28 A	DP 65644	
IT XII DP 65644	UNMK (73) DP 65644	ob26	14°45'00"	A DP 65644	-0°02'00"	17.10 A	DP 65644	
IT XII DP 65644	UNMK (62) DP 65644	ob27	45°19'00"	A DP 65644	-0°02'00"	34.60 A	DP 65644	
UNMK (62) DP 65644	UNMK (63) DP 65644	ob119	45°19'00"	A DP 65644	-0°02'00"	4.83 A	DP 65644	
UNMK (63) DP 65644	UNMK (64) DP 65644	ob121	45°19'00"	A DP 65644	-0°02'00"	4.83 A	DP 65644	
UNMK (64) DP 65644	UNMK (75) DP 65644	ob123	45°19'00"	A DP 65644	-0°02'00"	10.06 A	DP 65644	
UNMK (75) DP 65644	IT XII DP 65644	ob134	225°19'00"	A DP 65644	-0°02'00"	54.32 A	DP 65644	
UNMK (63) DP 65644	UNMK (74) DP 65644	ob122	315°19'00"	A DP 65644	-0°02'00"	7.44 A	DP 65644	
UNMK (64) DP 65644	UNMK (76) DP 65644	ob124	135°19'00"	A DP 65644	-0°02'00"	8.25 A	DP 65644	
UNMK (62) DP 65644	UNMK (77) DP 65644	ob120	135°18'40"	A DP 65644	-0°02'00"	28.16 A	DP 65644	
IT XII DP 65644	UNMK (78) DP 65644	ob28	87°23'00"	A DP 65644	-0°02'00"	15.89 A	DP 65644	

Mark and Vector

Survey Number DP 575283

Meridional Circuit Mount Eden 2000

From	To	Code	Bearing	Adpt Surv	Bearing Correction	Distance	Adpt Surv	Class
IT XII DP 65644	UNMK (66) DP 65644	ob29	157°17'00"	A DP 65644	-0°02'00"	27.76 A	DP 65644	
UNMK (66) DP 65644	UNMK (80) DP 65644	ob126	157°17'00"	A DP 65644	-0°02'00"	12.07 A	DP 65644	
UNMK (80) DP 65644	IT XII DP 65644	ob135	337°17'00"	A DP 65644	-0°02'00"	39.83 A	DP 65644	
UNMK (66) DP 65644	UNMK (79) DP 65644	ob127	67°17'00"	A DP 65644	-0°02'00"	13.48 A	DP 65644	
UNMK (66) DP 65644	UNMK (81) DP 65644	ob128	247°17'00"	A DP 65644	-0°02'00"	4.43 A	DP 65644	
UNMK (56) DP 65644	UNMK (82) DP 65644	ob108	104°09'50"	A DP 65644	-0°02'00"	4.83 A	DP 65644	
UNMK (57) DP 65644	UNMK (83) DP 65644	ob110	104°09'50"	A DP 65644	-0°02'00"	10.06 A	DP 65644	
UNMK (58) DP 65644	UNMK (84) DP 65644	ob112	104°09'50"	A DP 65644	-0°02'00"	6.24 A	DP 65644	
UNMK (59) DP 65644	UNMK (85) DP 65644	ob114	32°01'20"	A DP 65644	-0°02'00"	17.30 A	DP 65644	
UNMK (60) DP 65644	UNMK (86) DP 65644	ob116	32°01'20"	A DP 65644	-0°02'00"	13.48 A	DP 65644	
UNMK (61) DP 65644	UNMK (87) DP 65644	ob118	32°01'20"	A DP 65644	-0°02'00"	17.90 A	DP 65644	
IS XIV DP 65644	UNMK (88) DP 65644	ob43	106°35'00"	A DP 65644	-0°02'00"	17.70 A	DP 65644	
UNMK (27) DP 65644	UNMK (22) DP 65644	ob64	155°48'20"	C		211.39 C		

Mark Name	Mark Condition	Description
IS VI DP 65644		OIS 0.1 deep in driveway berm
IS VII DP 65644		OIS 0.3 deep in paddock
IT XII DP 65644		OIT 0.2 deep in paddock
UNMK 65 DP 575283		Position in dense hedge

*** End of Report ***

Schedule / Memorandum

Land Registration District

North Auckland

Survey Number

LT 575283

Territorial Authority (the Council)

Auckland Council

Memorandum of Easements

Last Edited: 21 Apr 2022 11:30:36

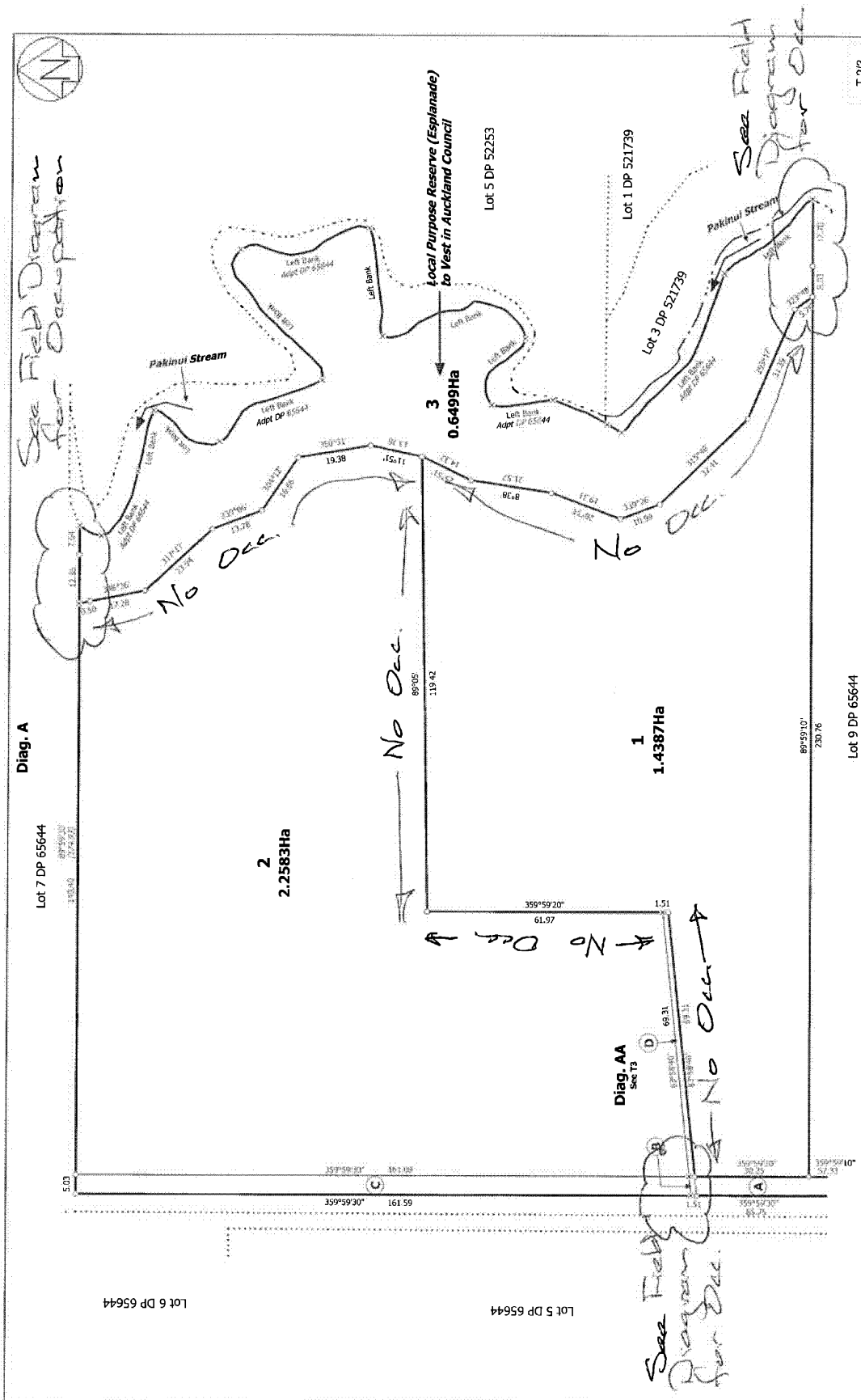
<u>Purpose</u>	<u>Shown</u>	<u>Burdened Land</u> (<u>Servient Tenement</u>)	<u>Benefited Land</u> (<u>Dominant Tenement</u>)
Right of Way	A	Lot 2	Lot 1
Right to convey electricity	B, D	Lot 2	Lot 1

Schedule of Existing Easements

Last Edited: 21 Apr 2022 11:32:45

<u>Purpose</u>	<u>Shown</u>	<u>Burdened Land</u> (<u>Servient Tenement</u>)	<u>Creating Document Reference</u>
Right of Way	A, B, C	Lot 2	EC 606204.2

Occupation Diagram



T 2/3	Title Plan LT 575283 DRAFT
Surveyor: Richard Keith Bromley Firm: Horizon Surveying and Land Develop	Lots 1-3 being a Subdivision of Lot 8 DP 65644 <i>Occupation Diagram</i>
Land District: North Auckland	Digitally Generated Plan Generated on: 05/07/2022 10:03am Page 4 of 5

Occupation Diagram

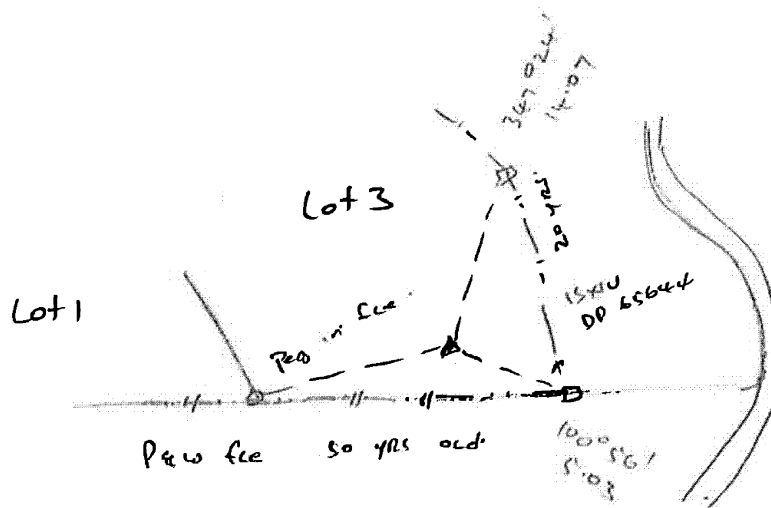
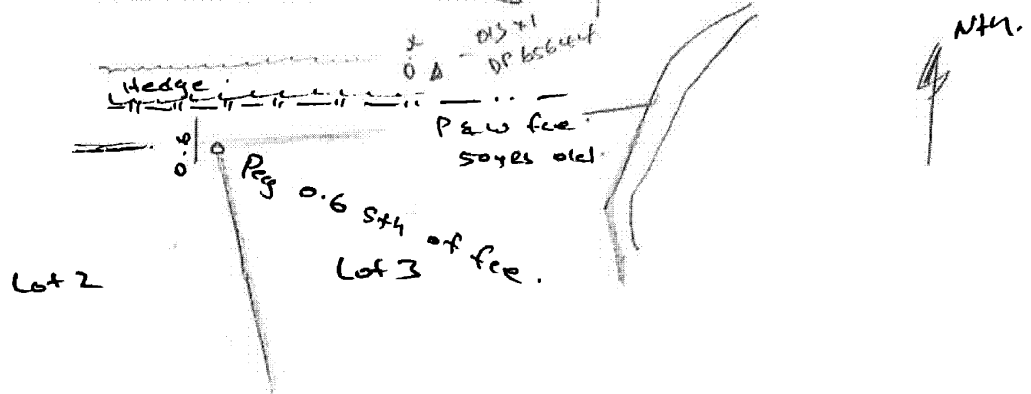


FB NO. L&S

JOB NO. 117290

SURVEYOR'S PAGE	SURVEYOR	DATE	PLAN NO.
2	RLH	17.05.2021	

Occupation Diagram



OFFICE PAGE

Occupation Diagram



FB NO. L25

JOB NO. 11290

SURVEYOR'S PAGE

SURVEYOR

DATE

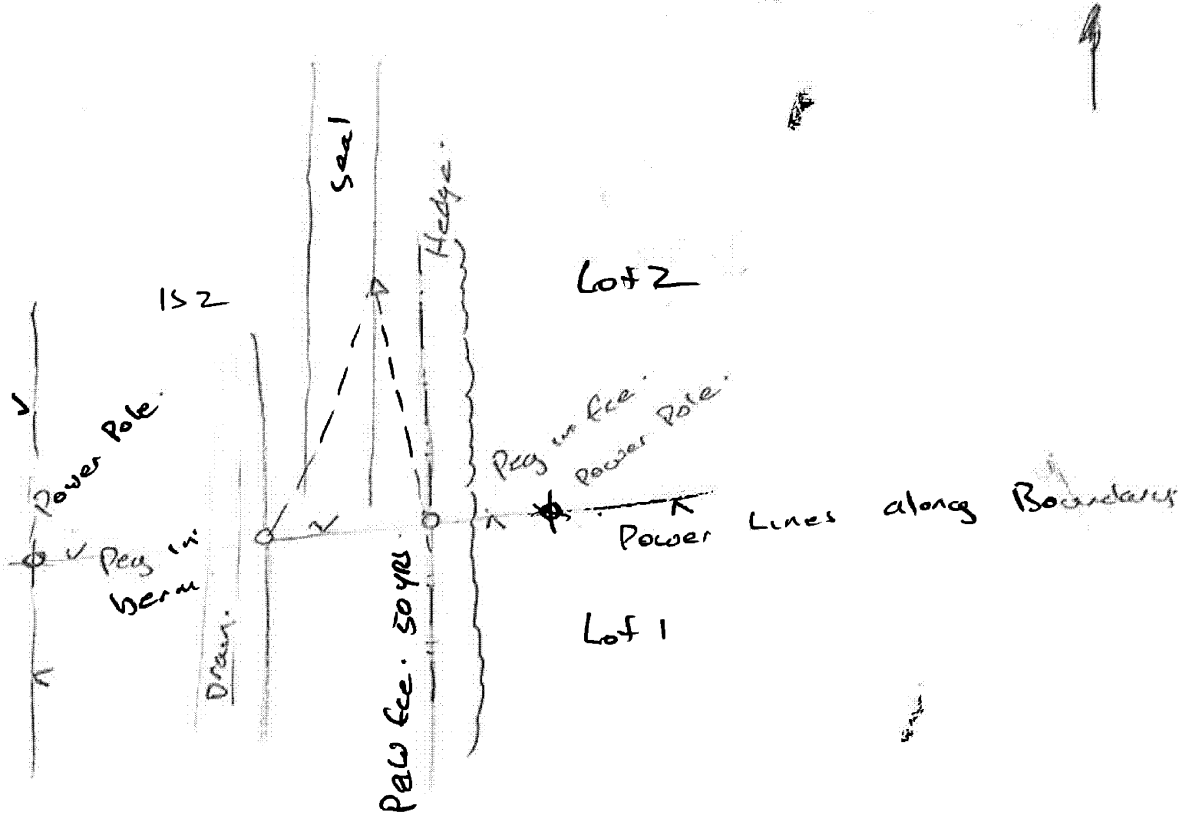
3

RLH

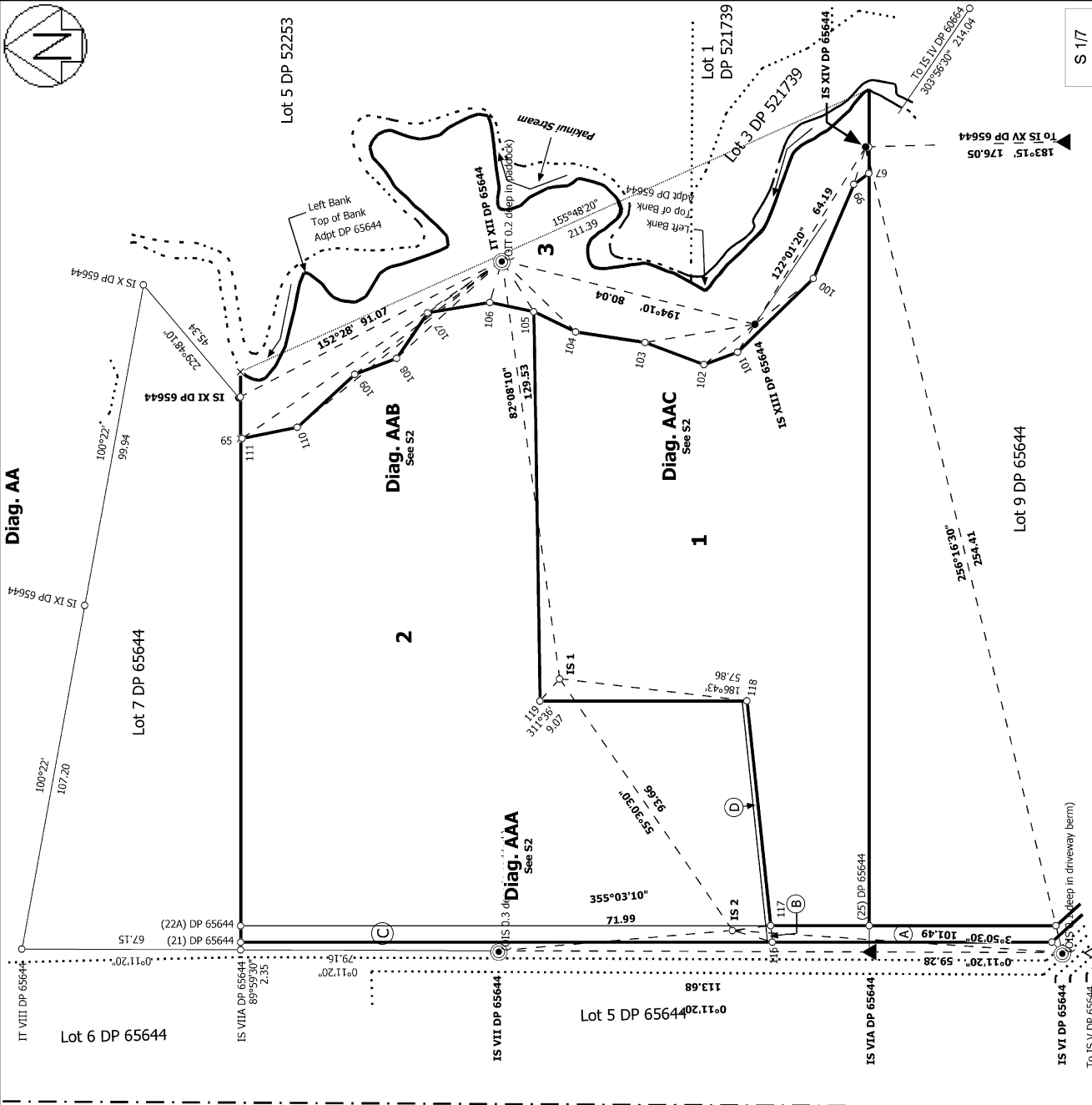
17.05.2021

PLAN NO.

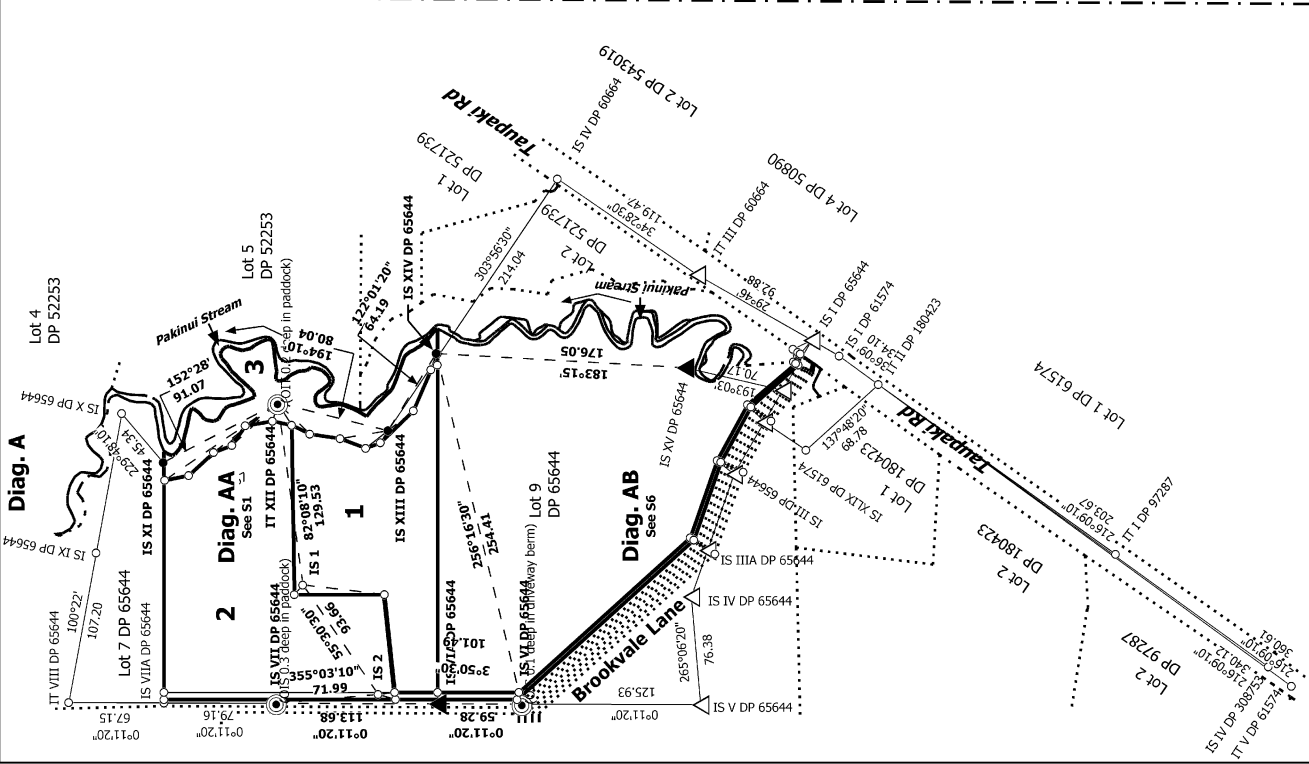
Occupation Diagram



OFFICE
PAGE



S 17

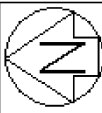
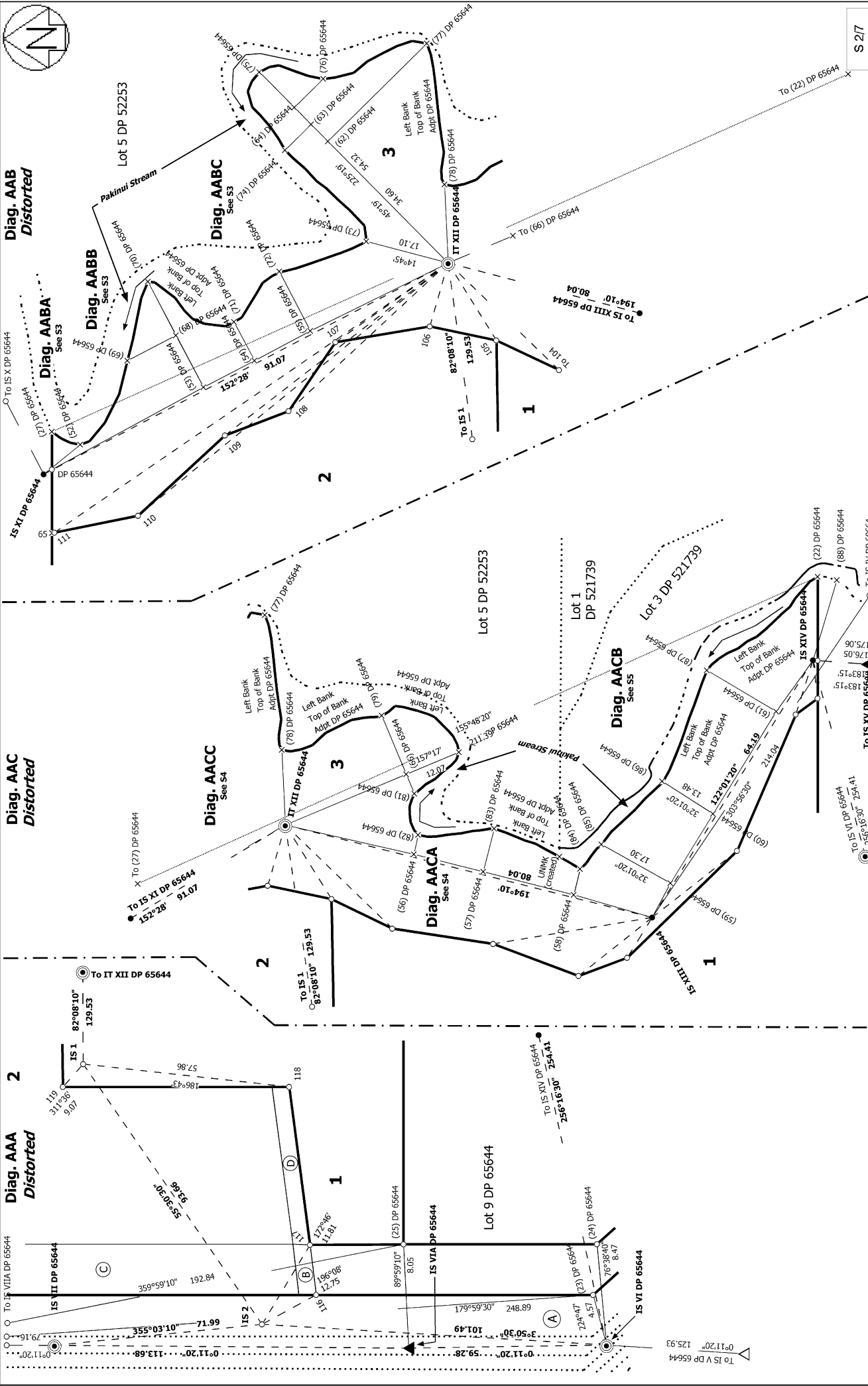


Record of Survey
DP 575283
Deposited on: 1/03/2024

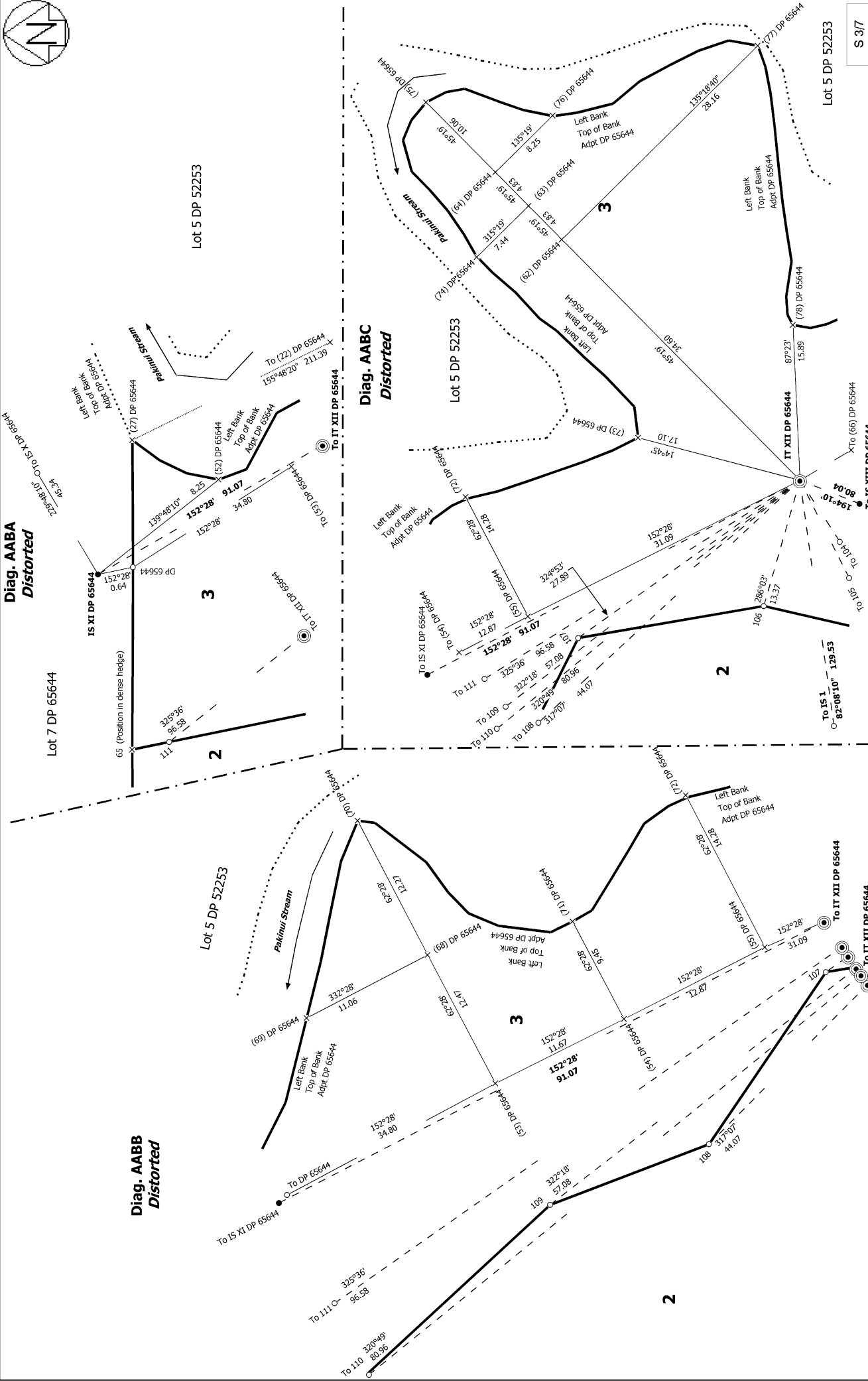
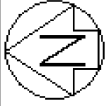
Surveyor: Richard Keith Bromley
Firm: Horizon Surveying and Land Develop
Date of Survey: 5/04/2022

Lots 1-3 being a Subdivision of Lot 8 DP 65644

Land District: North Auckland
Digitally Generated Plan
Generated on: 05/04/2024 10:23am Page 14 of 23



<p>Record of Survey DP 575283</p> <p>Deposited on: 1/03/2024</p>	<p>Surveyor: Richard Keith Bromley Firm: Horizon Surveying and Land Develop Date of Survey: 5/04/2022</p>	<p>Lots 1-3 being a Subdivision of Lot 8 DP 65644</p>	<p>Land District: North Auckland</p> <p>Digitally Generated Plan</p> <p>Generated on: 05/04/2024 10:23am Page 15 of 23</p>
--	---	---	---



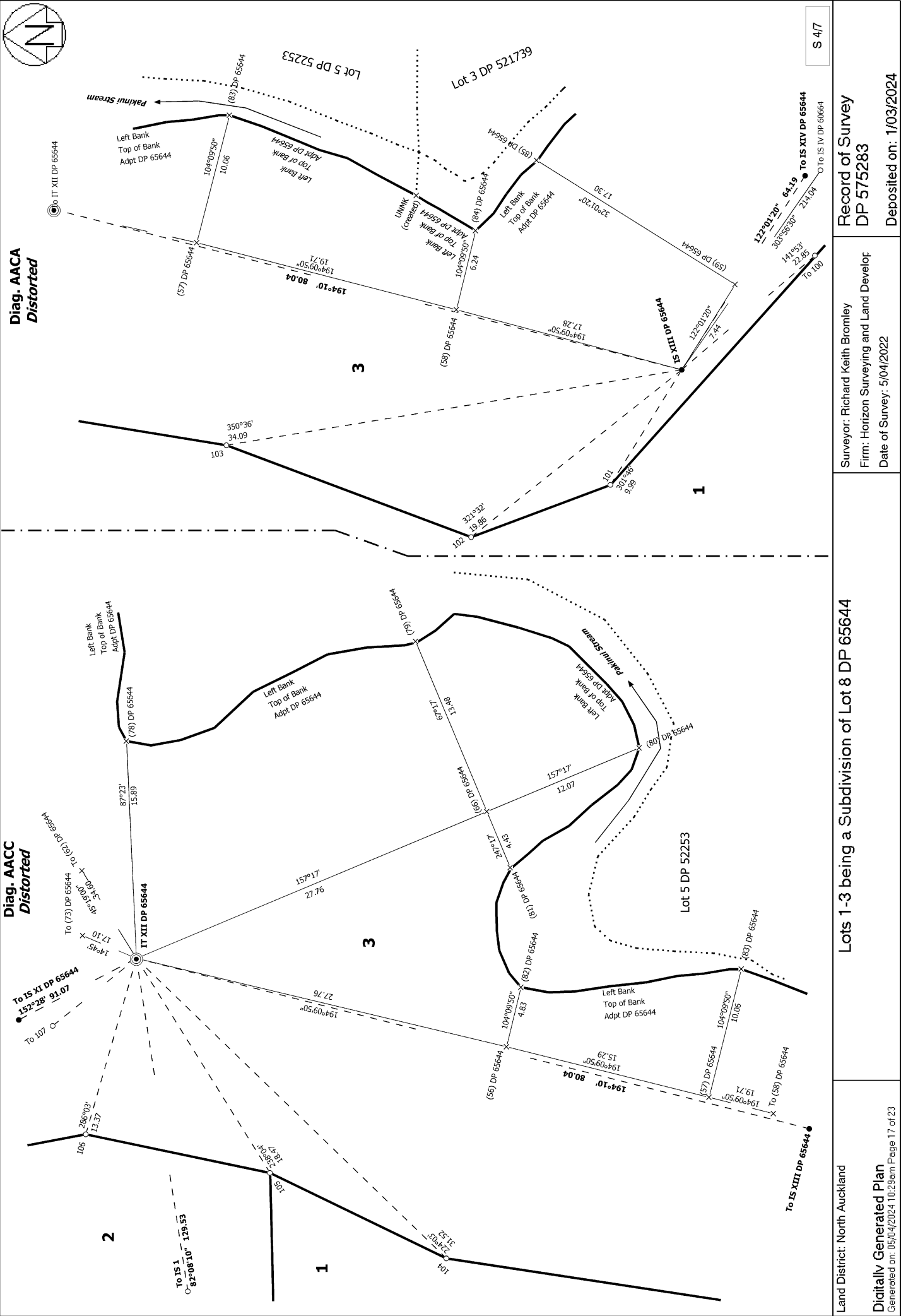
<p>Record of Survey DP 575283</p> <p>Deposited on: 1/03/2024</p>	<p>Surveyor: Richard Keith Bromley Firm: Horizon Surveying and Land Develop Date of Survey: 5/04/2022</p>	<p>Land District: North Auckland</p> <p>Digitally Generated Plan Generated on: 05/04/2024 10:23am Page 16 of 23</p> <p>Lots 1-3 being a Subdivision of Lot 8 DP 65644</p>
--	---	---

S 3/7



Diag. AACCA
Distorted

Diag. AAC
Distorted



S 4/7

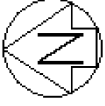
Record of Survey
 DP 575283
 Deposited on: 1/03/2024

Surveyor: Richard Keith Bromley
 Firm: Horizon Surveying and Land Develop
 Date of Survey: 5/04/2022

Lots 1-3 being a Subdivision of Lot 8 DP 65644

Land District: North Auckland

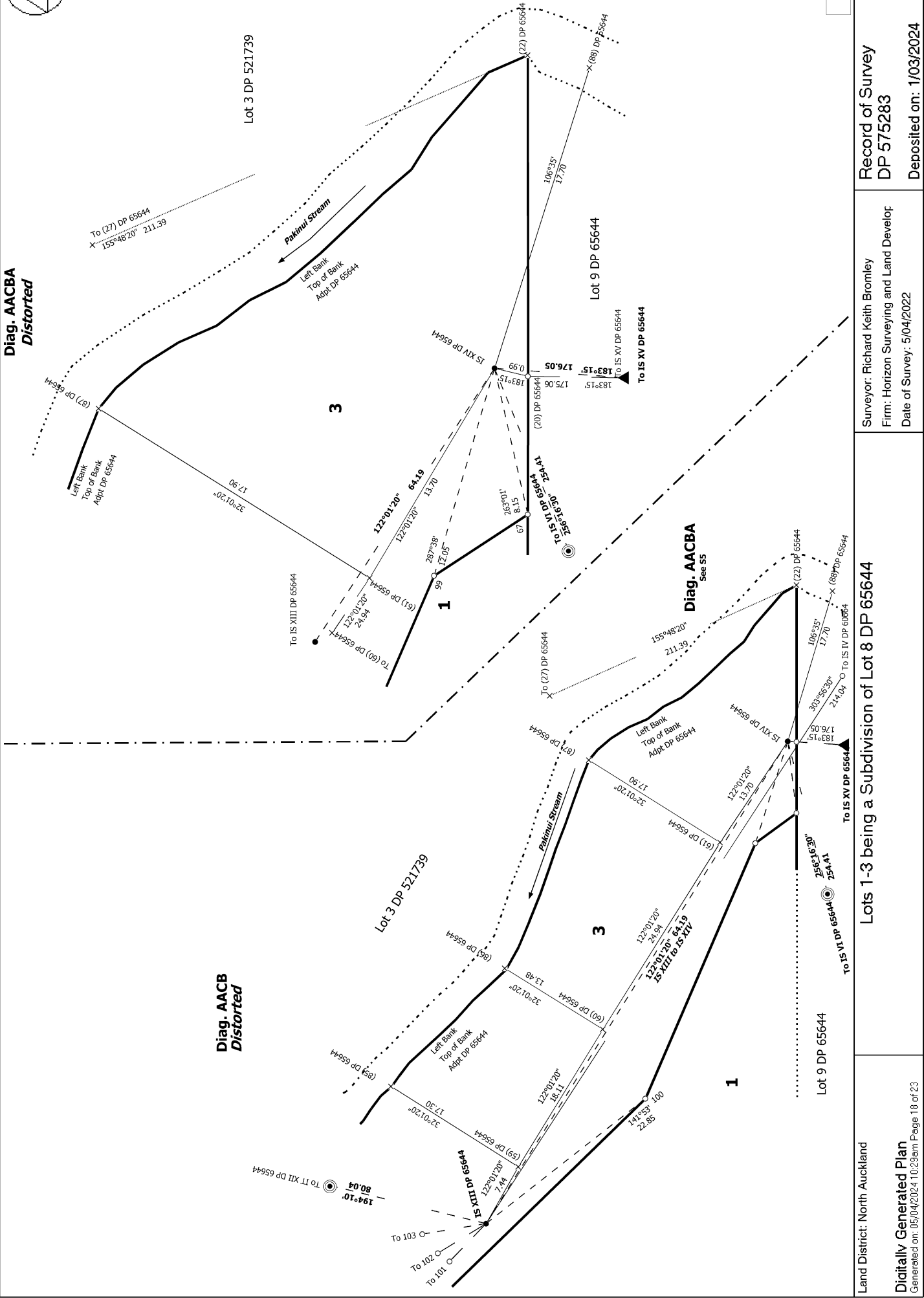
Digitally Generated Plan
 Generated on: 05/04/2024 10:23am | Page 17 of 23



Diag. AACBA
Distorted

Diag. AACB
Distorted

S 5/7



Land District: North Auckland

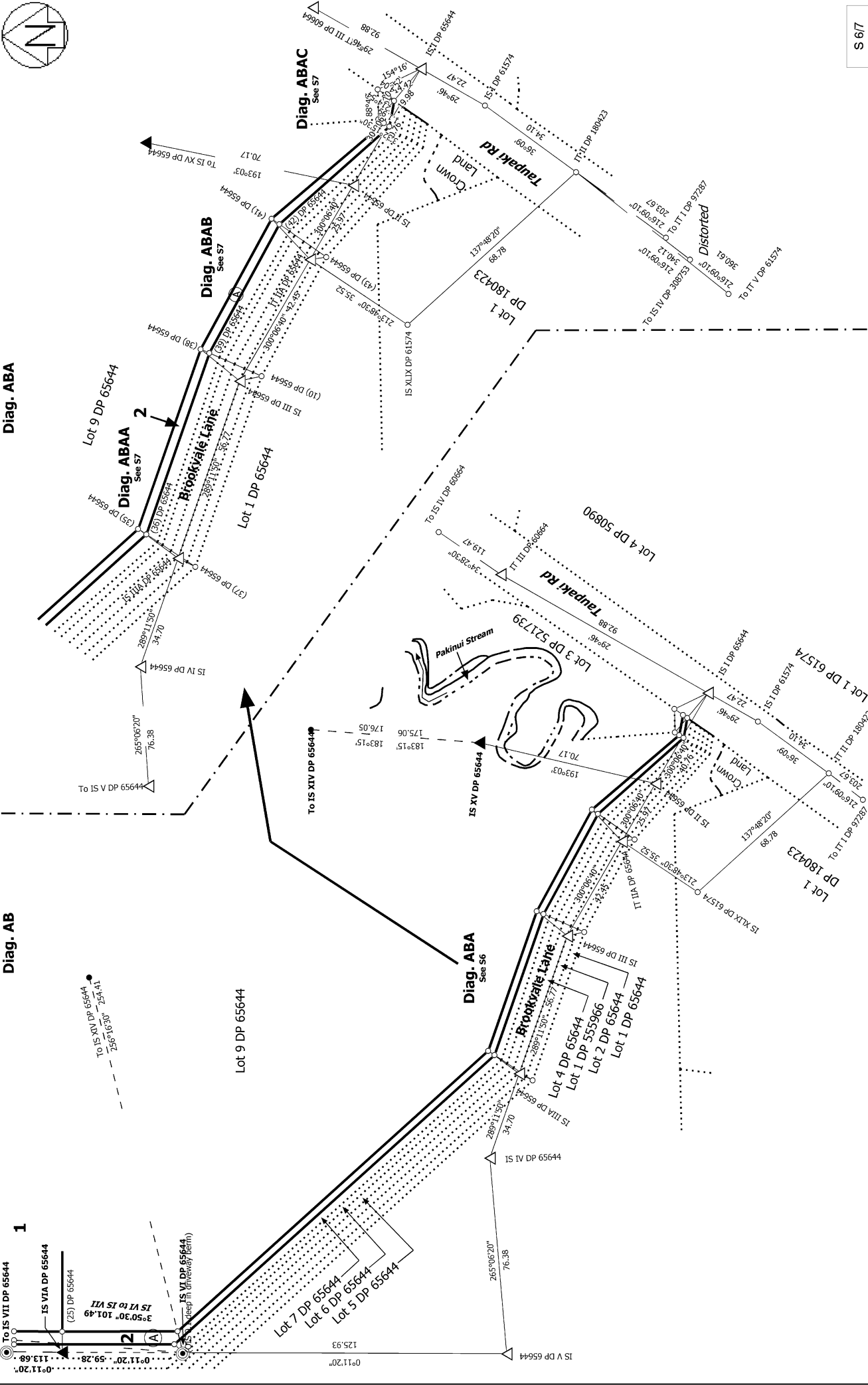
Digitally Generated Plan

Generated on: 05/04/2024 10:23am Page 18 of 23

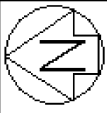
Lots 1-3 being a Subdivision of Lot 8 DP 65644

Surveyor: Richard Keith Bromley
Firm: Horizon Surveying and Land Develop
Date of Survey: 5/04/2022

Record of Survey
DP 575283
Deposited on: 1/03/2024

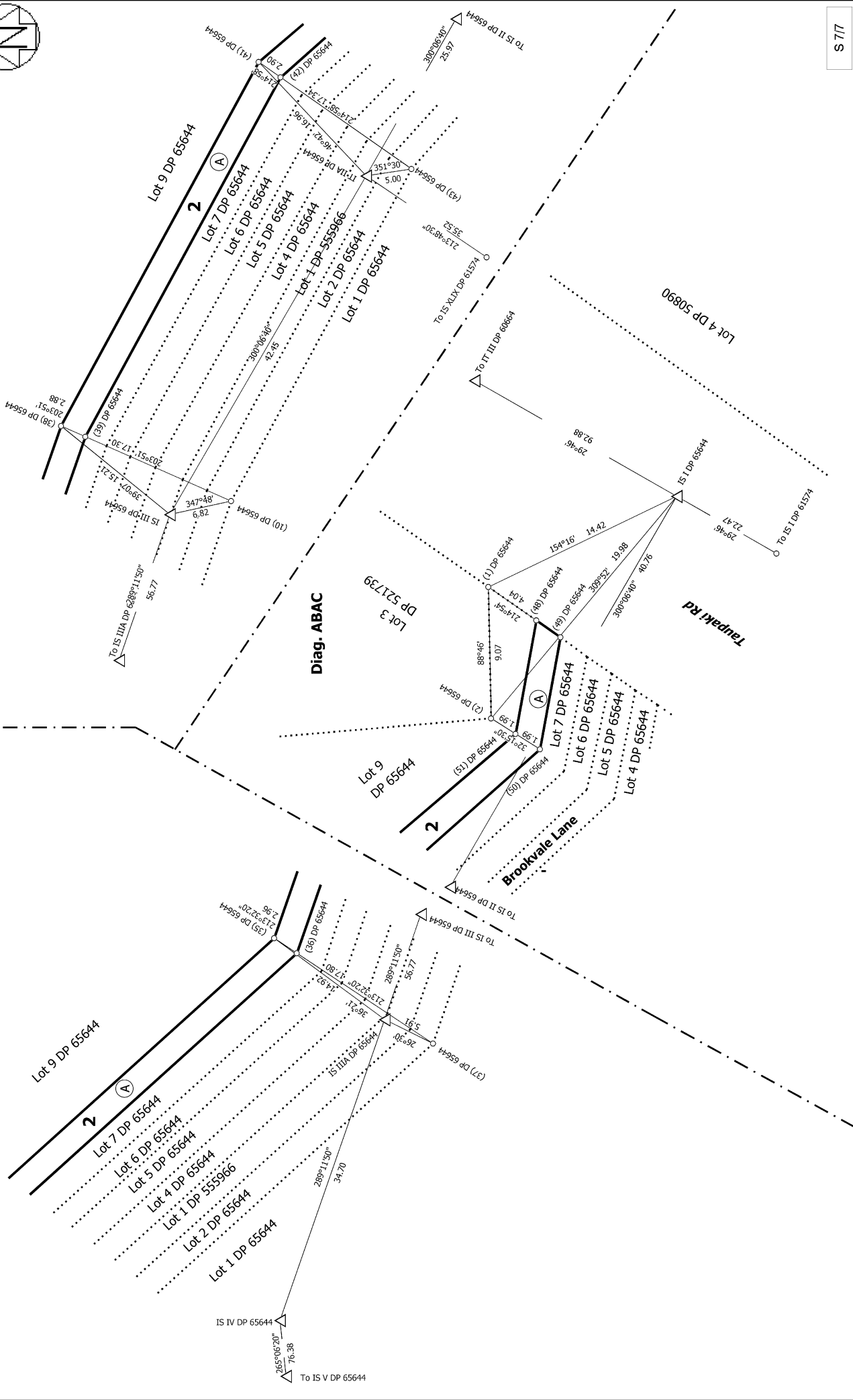


<p>Land District: North Auckland Digitally Generated Plan Generated on: 05/04/2024 10:23am Page 19 of 23</p>	<p>Lots 1-3 being a Subdivision of Lot 8 DP 65644</p>	<p>Surveyor: Richard Keith Bromley Firm: Horizon Surveying and Land Develop Date of Survey: 5/04/2022</p>	<p>S 617</p> <p>Record of Survey DP 575283 Deposited on: 1/03/2024</p>
---	--	---	--



Diag. ABAB

Diag. ABAA



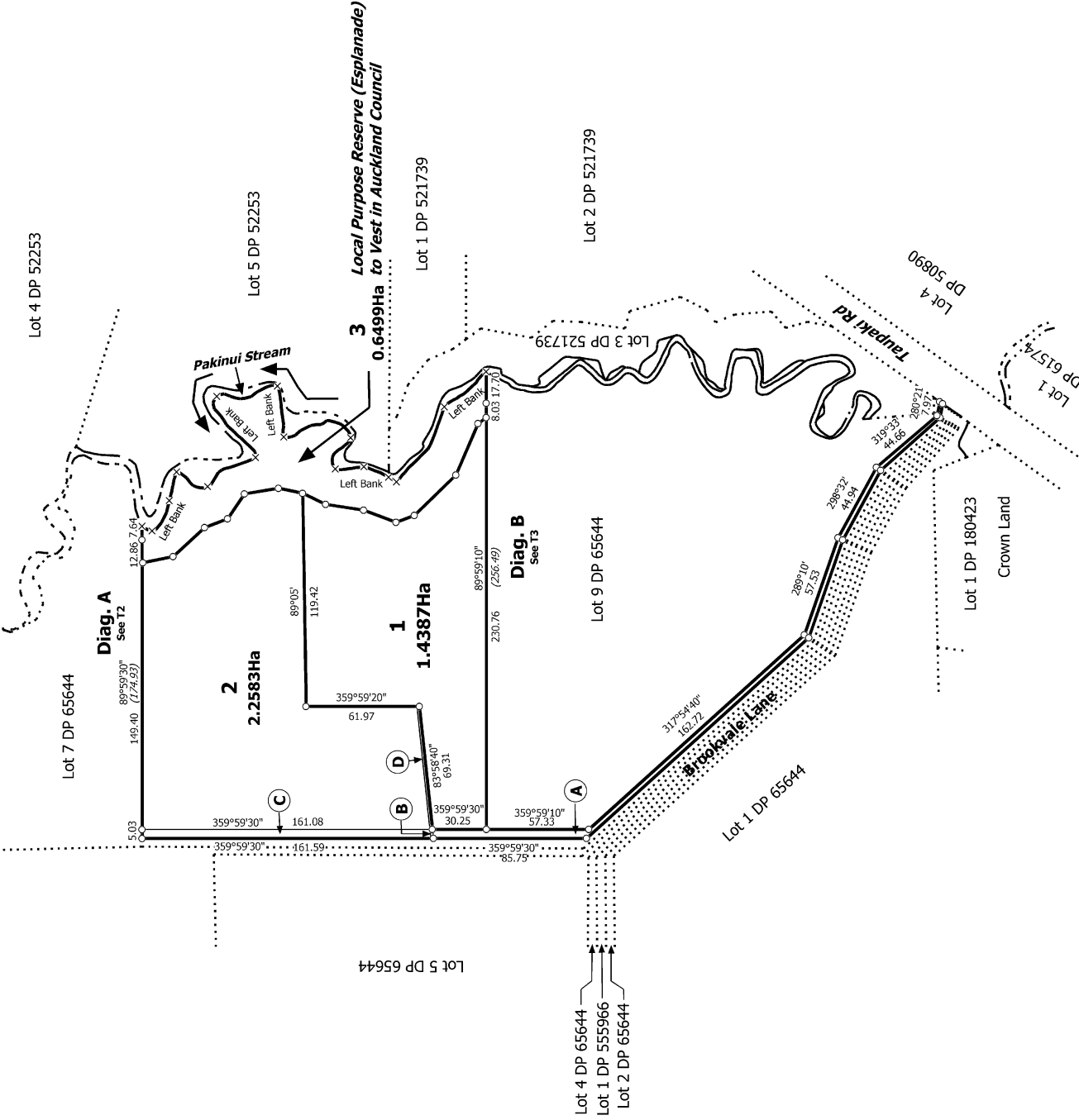
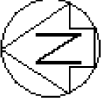
S 717

Record of Survey
 DP 575283
 Deposited on: 1/03/2024

Surveyor: Richard Keith Bromley
 Firm: Horizon Surveying and Land Develop
 Date of Survey: 5/04/2022

Lots 1-3 being a Subdivision of Lot 8 DP 65644

Land District: North Auckland
 Digitally Generated Plan
 Generated on: 05/04/2024 10:23am Page 20 of 23



T 1/3

Land District: North Auckland

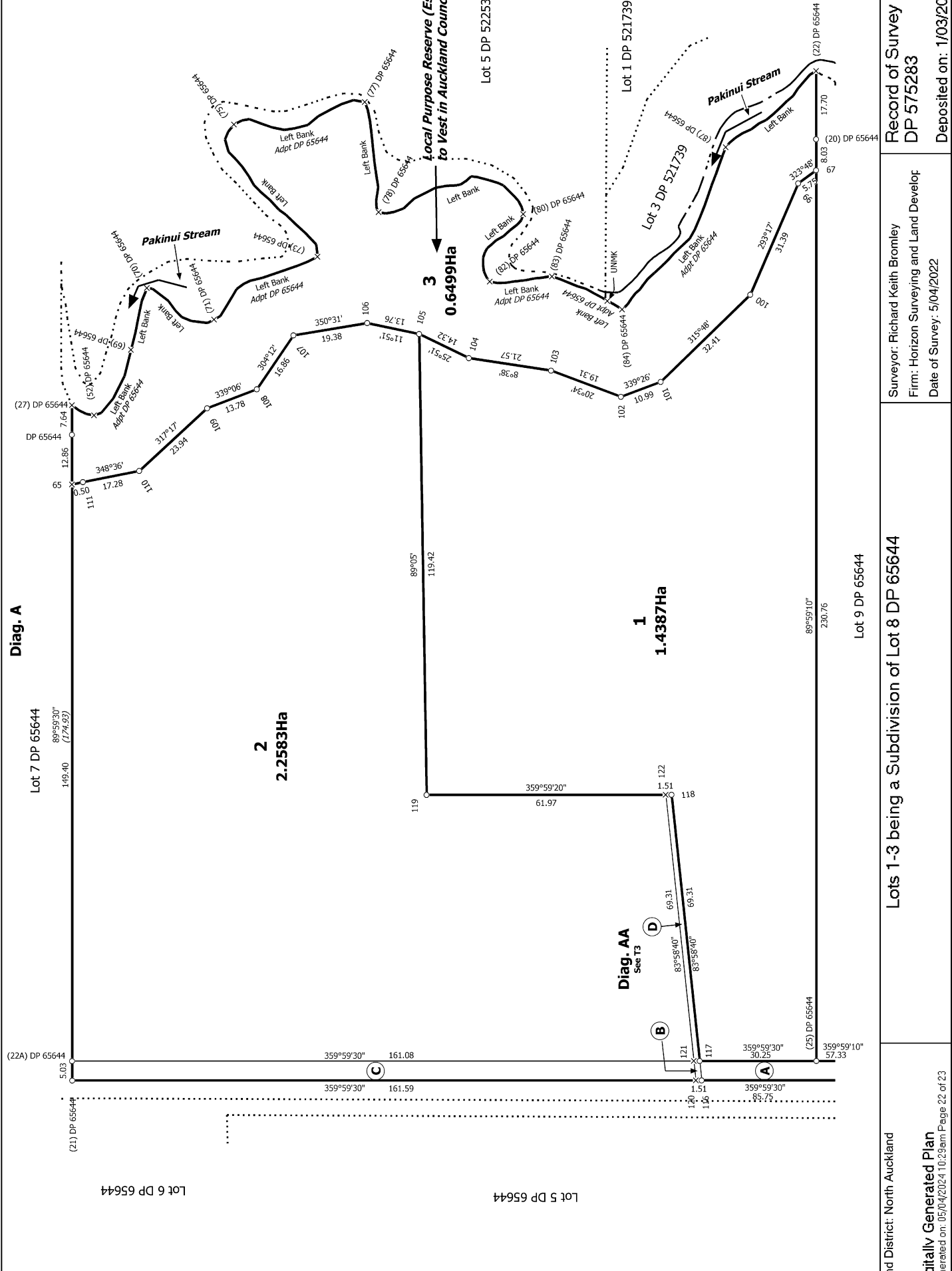
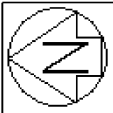
Digitally Generated Plan

Generated on: 05/04/2024 10:23am Page 21 of 23

Lots 1-3 being a Subdivision of Lot 8 DP 65644

Surveyor: Richard Keith Bromley
Firm: Horizon Surveying and Land Develop
Date of Survey: 5/04/2022

Record of Survey
DP 575283
Deposited on: 1/03/2024



Diag. A

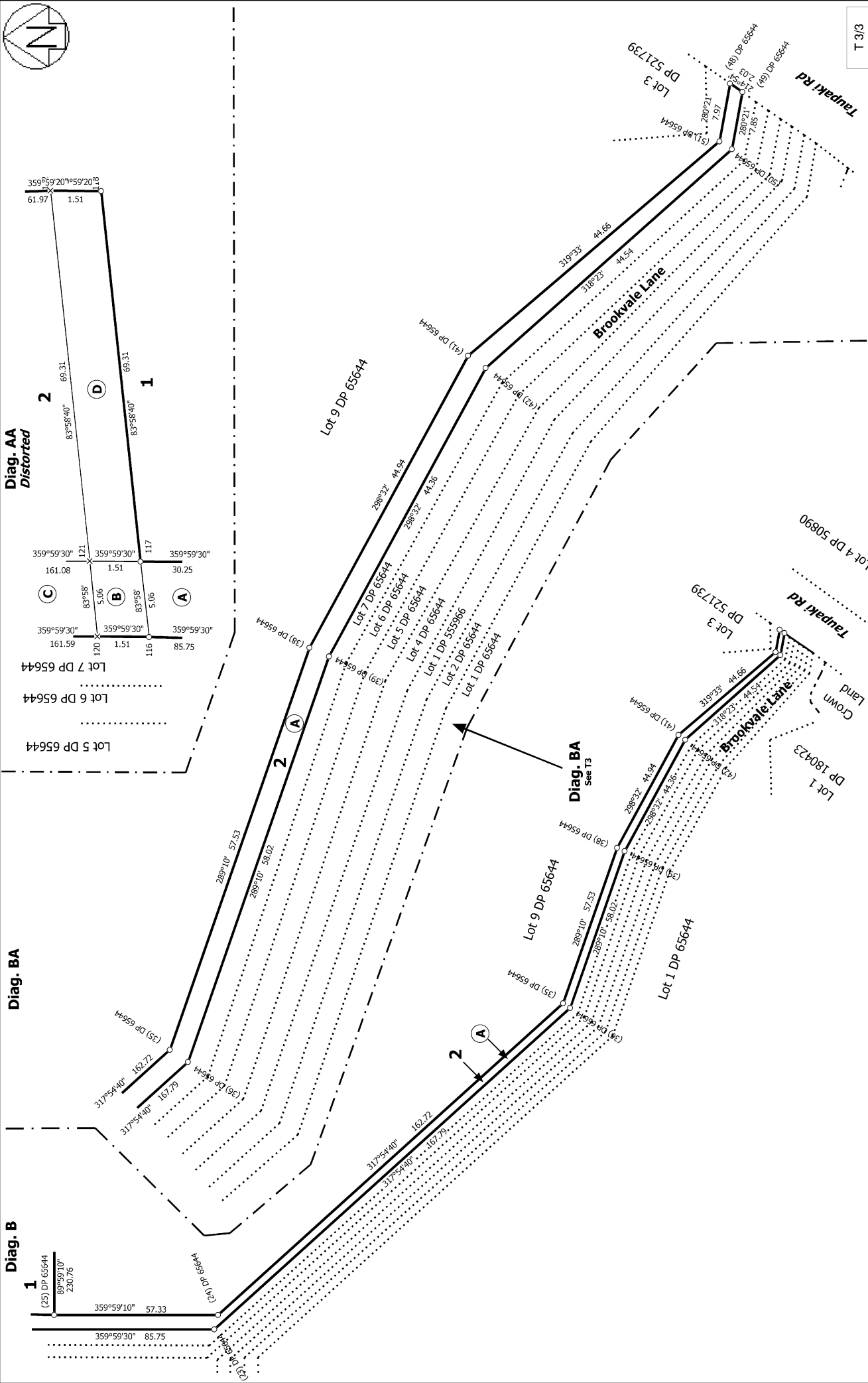
Diag. AA
See T3

T 2/3

Land District: North Auckland	Surveyor: Richard Keith Bromley	Record of Survey
	Firm: Horizon Surveying and Land Develop	DP 575283
	Date of Survey: 5/04/2022	Deposited on: 1/03/2024

--	--	--

Lots 1-3 being a Subdivision of Lot 8 DP 65644		
--	--	--



T 3/3

Lots 1-3 being a Subdivision of Lot 8 DP 65644

Surveyor: Richard Keith Bromley
 Firm: Horizon Surveying and Land Develop
 Date of Survey: 5/04/2022

Record of Survey
 DP 575283
 Deposited on: 1/03/2024