

Record of Survey - DP 575149

Survey Number DP 575149
Surveyor Reference 21173
Surveyor Daniel Luke Guthrie
Survey Firm Tripp Andrews Surveyors Ltd
Surveyor Declaration I Daniel Luke Guthrie, being a licensed cadastral surveyor, certify that--
 (a) this dataset provided by me and its related survey are accurate, correct and in accordance with the Cadastral Survey Act 2002 and Cadastral Survey Rules 2021; and
 (b) the survey was undertaken by me or under my personal direction.
 Declared on 15 Nov 2022 11:49 AM

Survey Details

Dataset Description Covenants on Lot 2 DP 114448, Lot 1 DP 24929, Lot 2 DP 24929, Lot 1 DP 463554 & Allotment 207 Parish of Opaheke
Purpose Land Transfer Plan Land Covenant
Status Deposited **Type** Survey
Land District North Auckland **Survey Class** Class C
Meridional Circuit Mount Eden 2000 **Vertical Datum** None

Survey Dates

Surveyed Date 28/03/2022 **Certified Date** 15/11/2022
Submitted Date 15/11/2022 11:49:55 **Survey Approval Date** 15/11/2022
Deposit Date 22/06/2023

Referenced Surveys

Survey Number	Land District	Bearing Correction
SO 178	North Auckland	0°00'00"
DP 114448	North Auckland	0°00'00"
DP 95340	North Auckland	0°00'00"
DP 98999	North Auckland	0°00'00"
DP 24929	North Auckland	0°00'00"
DP 431148	North Auckland	0°00'00"
DP 463554	North Auckland	0°00'00"

Territorial Authorities

Auckland Council

Comprised In

RT 666317
 RT NA753/206
 RT NA64A/495
 RT 616329

Created Parcels

Parcels	Parcel Intent	Area	RT Reference
Area AA Deposited Plan 575149	Covenant - Land		



Record of Survey - DP 575149

Created Parcels

Parcels	Parcel Intent	Area	RT Reference
Area BB Deposited Plan 575149	Covenant - Land		
Area CC Deposited Plan 575149	Covenant - Land		
Area DD Deposited Plan 575149	Covenant - Land		
Area FF Deposited Plan 575149	Covenant - Land		
Area EE Deposited Plan 575149	Covenant - Land		
Area GG Deposited Plan 575149	Covenant - Land		
Total Area		<hr/> 0.0000 Ha	

Mark and Vector

Survey Number DP 575149

Meridional Circuit Mount Eden 2000

From	To	Code	Bearing	Adpt Surv	Bearing Correction	Distance	Adpt Surv	Class
IT I DP 71774	IS XI DP 140885	ob0	216°20'18" M			2,732.13 M		
IS XI DP 140885	IT VI DP 130680	ob3	81°02'39" M			5,972.231 M		
IT I DP 71774	IT VI DP 130680	ob1	106°32'20" M			4,465.23 M		
IT VI DP 130680	IT V DP 95340	ob7	215°35'10" M			1,741.61 M		
IT V DP 95340	IT I DP 71774	ob12	309°26'27" M			4,230.33 M		
IS XI DP 140885	IT I DP 98999	ob4	103°12'08" M			4,516.52 M		
IT I DP 98999	IT V DP 95340	ob9	41°53'35" M			732.00 M		
IT V DP 95340	POST 44 DP 575149	ob13	140°06'00" C			34.86 C		
POST 44 DP 575149	POST 39 DP 575149	ob14	120°46'00" C			22.09 C		Class C
POST 39 DP 575149	POST 43 DP 575149	ob15	90°48'00" C			21.81 C		Class C
POST 43 DP 575149	POST 46 DP 575149	ob16	131°36'00" C			30.68 C		Class C
POST 46 DP 575149	POST 47 DP 575149	ob17	147°12'00" C			34.96 C		Class C
POST 47 DP 575149	POST 48 DP 575149	ob18	69°35'00" C			24.81 C		Class C
POST 48 DP 575149	POST 49 DP 575149	ob19	81°22'00" C			49.57 C		Class C
POST 49 DP 575149	POST 50 DP 575149	ob20	118°30'00" C			21.47 C		Class C
POST 50 DP 575149	POST 51 DP 575149	ob21	129°58'00" C			48.71 C		Class C
POST 51 DP 575149	POST 52 DP 575149	ob22	135°18'00" C			22.25 C		Class C
POST 52 DP 575149	POST 53 DP 575149	ob23	154°09'00" C			5.76 C		Class C
POST 53 DP 575149	POST 54 DP 575149	ob24	153°18'00" C			10.62 C		Class C
POST 54 DP 575149	POST 55 DP 575149	ob25	165°06'00" C			32.57 C		Class C
POST 55 DP 575149	POST 56 DP 575149	ob26	212°18'00" C			10.67 C		Class C
POST 56 DP 575149	POST 57 DP 575149	ob27	255°57'00" C			25.37 C		Class C
POST 57 DP 575149	POST 58 DP 575149	ob28	243°43'00" C			16.89 C		Class C
POST 58 DP 575149	POST 59 DP 575149	ob29	215°39'00" C			24.62 C		Class C
POST 59 DP 575149	POST 60 DP 575149	ob30	267°26'00" C			7.50 C		Class C
POST 60 DP 575149	POST 61 DP 575149	ob31	315°23'00" C			16.03 C		Class C
POST 61 DP 575149	POST 62 DP 575149	ob32	340°36'00" C			27.35 C		Class C

Mark and Vector

Survey Number DP 575149

Meridional Circuit Mount Eden 2000

From	To	Code	Bearing	Adpt Surv	Bearing Correction	Distance	Adpt Surv	Class
POST 62 DP 575149	POST 63 DP 575149	ob33	300°11'00"	C		24.78 C		Class C
POST 63 DP 575149	POST 64 DP 575149	ob34	279°13'00"	C		7.69 C		Class C
POST 64 DP 575149	POST 65 DP 575149	ob35	258°44'00"	C		34.28 C		Class C
POST 65 DP 575149	POST 66 DP 575149	ob36	228°06'00"	C		20.42 C		Class C
POST 66 DP 575149	POST 67 DP 575149	ob37	291°25'00"	C		13.45 C		Class C
POST 67 DP 575149	POST 68 DP 575149	ob38	5°57'00"	C		27.18 C		Class C
POST 68 DP 575149	POST 69 DP 575149	ob39	308°50'00"	C		24.68 C		Class C
POST 69 DP 575149	POST 70 DP 575149	ob40	318°24'00"	C		33.77 C		Class C
POST 70 DP 575149	POST 71 DP 575149	ob41	307°56'00"	C		34.05 C		Class C
POST 71 DP 575149	POST 72 DP 575149	ob42	319°27'00"	C		11.55 C		Class C
POST 72 DP 575149	POST 73 DP 575149	ob43	11°56'00"	C		28.54 C		Class C
POST 73 DP 575149	POST 74 DP 575149	ob44	332°38'00"	C		18.03 C		Class C
POST 74 DP 575149	POST 75 DP 575149	ob46	29°28'30"	C		16.47 C		Class C
POST 75 DP 575149	POST 44 DP 575149	ob47	80°07'30"	C		3.08 C		Class C
IT I DP 71774	IS XXXXI DP 575149	ob2	125°45'18"	M		1,962.71 M		
IS XXXXI DP 575149	IS XI DP 140885	ob48	251°49'57"	M		3,380.23 M		
IS XXXXI DP 575149	IT VIII DP 49183	ob49	115°34'35"	M		551.91 M		
IT VIII DP 49183	IT VI DP 130680	ob51	87°01'10"	M		2,192.84 M		
IS XXXXI DP 575149	POST 76 DP 575149	ob50	204°55'30"	C		153.48 C		
POST 76 DP 575149	POST 77 DP 575149	ob52	135°02'00"	C		27.96 C		Class C
POST 77 DP 575149	POST 78 DP 575149	ob53	167°13'00"	C		28.86 C		Class C
POST 78 DP 575149	POST 79 DP 575149	ob54	196°37'00"	C		48.68 C		Class C
POST 79 DP 575149	POST 80 DP 575149	ob55	132°00'00"	C		35.31 C		Class C
POST 80 DP 575149	POST 81 DP 575149	ob56	180°49'00"	C		44.29 C		Class C

Mark and Vector

Survey Number DP 575149

Meridional Circuit Mount Eden 2000

From	To	Code	Bearing	Adpt Surv	Bearing Correction	Distance	Adpt Surv	Class
POST 81 DP 575149	POST 82 DP 575149	ob57	131°49'00"	C		41.31 C		Class C
POST 82 DP 575149	POST 83 DP 575149	ob58	146°15'00"	C		6.70 C		Class C
POST 83 DP 575149	POST 84 DP 575149	ob59	167°40'00"	C		54.16 C		Class C
POST 84 DP 575149	POST 85 DP 575149	ob60	159°13'00"	C		32.28 C		Class C
POST 85 DP 575149	POST 86 DP 575149	ob61	120°04'00"	C		28.71 C		Class C
POST 86 DP 575149	IT VIII DP 49183	ob62	66°18'50"	C		482.96 C		
POST 86 DP 575149	POST 87 DP 575149	ob63	285°15'30"	C		92.93 C		Class C
POST 87 DP 575149	POST 88 DP 575149	ob64	44°05'00"	C		6.66 C		Class C
POST 88 DP 575149	POST 89 DP 575149	ob65	43°32'00"	C		5.57 C		Class C
POST 89 DP 575149	POST 16 DP 575149	ob66	325°37'00"	C		30.68 C		Class C
POST 16 DP 575149	POST 103 DP 575149	ob67	300°21'00"	C		46.36 C		Class C
POST 103 DP 575149	POST 90 DP 575149	ob68	327°43'00"	C		42.60 C		Class C
POST 90 DP 575149	POST 91 DP 575149	ob69	312°26'00"	C		53.66 C		Class C
POST 91 DP 575149	POST 92 DP 575149	ob70	337°08'00"	C		11.27 C		Class C
POST 92 DP 575149	POST 93 DP 575149	ob71	20°03'00"	C		43.70 C		Class C
POST 93 DP 575149	POST 94 DP 575149	ob72	311°15'00"	C		19.86 C		Class C
POST 94 DP 575149	POST 95 DP 575149	ob73	257°54'00"	C		4.84 C		Class C
POST 95 DP 575149	POST 96 DP 575149	ob74	3°16'00"	C		51.19 C		Class C
POST 96 DP 575149	POST 97 DP 575149	ob75	106°29'00"	C		4.51 C		Class C
POST 97 DP 575149	POST 98 DP 575149	ob76	49°10'00"	C		17.94 C		Class C
POST 98 DP 575149	POST 99 DP 575149	ob77	75°49'00"	C		7.32 C		Class C
POST 99 DP 575149	POST 100 DP 575149	ob78	102°54'00"	C		28.01 C		Class C
POST 100 DP 575149	POST 101 DP 575149	ob79	49°53'00"	C		20.28 C		Class C
POST 101 DP 575149	POST 76 DP 575149	ob80	74°46'00"	C		19.70 C		Class C

Mark and Vector

Survey Number DP 575149

Meridional Circuit Mount Eden 2000

From	To	Code	Bearing	Adpt Surv	Bearing Correction	Distance	Adpt Surv	Class
IT I DP 98999	POST 102 DP 575149	ob10	214°38'00"	C		503.25 C		
POST 102 DP 575149	POST 104 DP 575149	ob81	210°39'00"	C		24.88 C		Class C
POST 104 DP 575149	POST 105 DP 575149	ob82	205°57'00"	C		63.79 C		Class C
POST 105 DP 575149	POST 106 DP 575149	ob83	195°46'00"	C		48.42 C		Class C
POST 106 DP 575149	POST 107 DP 575149	ob84	183°13'00"	C		48.06 C		Class C
POST 107 DP 575149	POST 108 DP 575149	ob85	208°06'00"	C		11.18 C		Class C
POST 108 DP 575149	POST 109 DP 575149	ob86	264°28'00"	C		16.81 C		Class C
POST 109 DP 575149	POST 110 DP 575149	ob87	273°18'00"	C		8.19 C		Class C
POST 110 DP 575149	POST 111 DP 575149	ob88	308°45'00"	C		22.02 C		Class C
POST 111 DP 575149	POST 117 DP 575149	ob89	327°01'00"	C		53.34 C		Class C
POST 117 DP 575149	POST 114 DP 575149	ob90	270°53'00"	C		31.45 C		Class C
POST 114 DP 575149	POST 113 DP 575149	ob91	327°00'00"	C		7.76 C		Class C
POST 113 DP 575149	POST 112 DP 575149	ob92	5°29'00"	C		22.15 C		Class C
POST 112 DP 575149	POST 121 DP 575149	ob93	345°36'00"	C		17.40 C		Class C
POST 121 DP 575149	POST 118 DP 575149	ob94	317°37'00"	C		13.44 C		Class C
POST 118 DP 575149	POST 119 DP 575149	ob95	274°37'00"	C		3.68 C		Class C
POST 119 DP 575149	POST 122 DP 575149	ob96	252°23'00"	C		21.60 C		Class C
POST 122 DP 575149	POST 120 DP 575149	ob97	300°42'00"	C		17.46 C		Class C
POST 120 DP 575149	POST 123 DP 575149	ob98	278°10'00"	C		53.70 C		Class C
POST 123 DP 575149	POST 124 DP 575149	ob99	296°42'00"	C		11.06 C		Class C
POST 124 DP 575149	POST 128 DP 575149	ob100	0°51'00"	C		28.84 C		Class C
POST 128 DP 575149	POST 126 DP 575149	ob101	16°39'00"	C		13.35 C		Class C
POST 126 DP 575149	POST 127 DP 575149	ob102	50°38'00"	C		8.74 C		Class C
POST 127 DP 575149	POST 125 DP 575149	ob103	128°49'00"	C		16.76 C		Class C

Mark and Vector

Survey Number DP 575149

Meridional Circuit Mount Eden 2000

From	To	Code	Bearing	Adpt Surv	Bearing Correction	Distance	Adpt Surv	Class
POST 125 DP 575149	POST 132 DP 575149	ob104	73°39'00"	C		12.74 C		Class C
POST 132 DP 575149	POST 130 DP 575149	ob105	359°59'00"	C		29.67 C		Class C
POST 130 DP 575149	POST 115 DP 575149	ob106	82°15'00"	C		24.28 C		Class C
POST 115 DP 575149	POST 116 DP 575149	ob107	335°12'00"	C		24.76 C		
POST 116 DP 575149	POST 133 DP 575149	ob109	282°28'00"	C		8.38 C		Class C
POST 133 DP 575149	POST 129 DP 575149	ob111	339°28'00"	C		19.33 C		Class C
POST 129 DP 575149	POST 389 DP 575149	ob112	260°08'00"	C		90.84 C		Class C
POST 389 DP 575149	POST 136 DP 575149	ob113	281°01'00"	C		21.89 C		Class C
POST 136 DP 575149	POST 137 DP 575149	ob114	253°11'00"	C		12.50 C		Class C
POST 137 DP 575149	POST 138 DP 575149	ob115	221°41'00"	C		15.25 C		Class C
UNMK 131 DP 575149	POST 139 DP 575149	ob119	308°48'00"	C		1.23 C		Class D
POST 139 DP 575149	POST 141 DP 575149	ob117	41°03'00"	C		27.70 C		Class C
UNMK 130 DP 575149	POST 142 DP 575149	ob224	76°50'00"	C		11.07 C		Class D
POST 142 DP 575149	POST 143 DP 575149	ob121	104°46'00"	C		33.55 C		Class C
POST 143 DP 575149	POST 144 DP 575149	ob122	70°19'00"	C		39.40 C		Class C
POST 144 DP 575149	POST 145 DP 575149	ob123	92°31'00"	C		16.93 C		Class C
POST 145 DP 575149	POST 146 DP 575149	ob124	76°10'00"	C		28.67 C		Class C
POST 146 DP 575149	POST 147 DP 575149	ob125	110°14'30"	C		127.64 C		Class C
POST 147 DP 575149	IT I DP 98999	ob126	47°48'25"	C		554.68 C		
POST 116 DP 575149	POST 148 DP 575149	ob110	61°12'00"	C		18.24 C		Class C
POST 148 DP 575149	POST 149 DP 575149	ob127	93°10'00"	C		12.64 C		Class C
POST 149 DP 575149	POST 150 DP 575149	ob128	162°40'00"	C		21.12 C		Class C
POST 150 DP 575149	POST 151 DP 575149	ob129	117°45'00"	C		30.29 C		Class C
POST 151 DP 575149	POST 152 DP 575149	ob130	79°07'00"	C		19.11 C		Class C

Mark and Vector

Survey Number DP 575149

Meridional Circuit Mount Eden 2000

From	To	Code	Bearing	Adpt Surv	Bearing Correction	Distance	Adpt Surv	Class
POST 152 DP 575149	POST 153 DP 575149	ob131	54°46'00"	C		30.42 C		Class C
POST 153 DP 575149	POST 147 DP 575149	ob132	18°23'00"	C		5.94 C		Class C
POST 115 DP 575149	POST 154 DP 575149	ob108	116°16'00"	C		42.85 C		Class C
POST 154 DP 575149	POST 155 DP 575149	ob133	119°43'00"	C		53.99 C		Class C
POST 155 DP 575149	POST 156 DP 575149	ob134	45°02'00"	C		65.97 C		Class C
POST 156 DP 575149	POST 171 DP 575149	ob135	5°48'00"	C		16.07 C		Class C
POST 171 DP 575149	POST 162 DP 575149	ob137	102°17'00"	C		39.43 C		Class C
POST 162 DP 575149	POST 157 DP 575149	ob138	115°14'00"	C		12.41 C		Class C
POST 157 DP 575149	POST 102 DP 575149	ob139	119°24'00"	C		44.06 C		Class C
IS XI DP 140885	IT C DP 28396	ob5	107°53'12"	M		1,919.42 M		
IT C DP 28396	IS VIII DP 575149	ob140	126°15'22"	M		1,872.52 M		
IS VIII DP 575149	IT I DP 98999	ob141	57°53'42"	M		1,252.00 M		
IS VIII DP 575149	POST 138 DP 575149	ob142	54°04'06"	C		486.99 C		
IS XI DP 140885	IT VIII DP 111592	ob6	72°32'03"	M		2,495.54 M		
IT VIII DP 111592	IT VI DP 111592	ob147	322°56'10"	M		275.23 M		
IT VI DP 111592	IT I DP 71774	ob149	334°12'00"	M		1,368.59 M		
IT VIII DP 111592	IS I SO 58559	ob148	206°17'40"	A	DP 114448	0°00'00" 477.82 A	DP 114448	
IS I SO 58559	POST 161 DP 575149	ob150	286°36'00"	C		214.33 C		
POST 161 DP 575149	POST 159 DP 575149	ob151	281°55'20"	C		37.52 C		Class C
POST 159 DP 575149	POST 166 DP 575149	ob152	261°25'30"	C		13.27 C		Class C
POST 166 DP 575149	POST 164 DP 575149	ob153	330°30'00"	C		16.56 C		Class C
POST 164 DP 575149	IT VIII DP 111592	ob154	53°51'30"	C		588.25 C		
POST 164 DP 575149	POST 134 DP 575149	ob155	290°41'00"	C		13.11 C		Class C
POST 134 DP 575149	POST 163 DP 575149	ob156	277°16'00"	C		25.76 C		Class C
POST 163 DP 575149	POST 167 DP 575149	ob157	257°09'00"	C		32.64 C		Class C

Mark and Vector

Survey Number DP 575149

Meridional Circuit Mount Eden 2000

From	To	Code	Bearing	Adpt Surv	Bearing Correction	Distance	Adpt Surv	Class
POST 167 DP 575149	POST 165 DP 575149	ob158	221°54'00"	C		4.41 C		Class C
POST 165 DP 575149	POST 169 DP 575149	ob159	184°50'00"	C		43.92 C		Class C
POST 169 DP 575149	POST 173 DP 575149	ob160	138°03'00"	C		23.15 C		Class C
POST 173 DP 575149	POST 168 DP 575149	ob161	106°26'00"	C		17.67 C		Class C
POST 168 DP 575149	POST 172 DP 575149	ob162	85°50'00"	C		37.04 C		Class C
POST 172 DP 575149	POST 170 DP 575149	ob163	102°00'00"	C		18.51 C		Class C
POST 170 DP 575149	POST 177 DP 575149	ob164	145°52'00"	C		24.14 C		Class C
POST 177 DP 575149	POST 175 DP 575149	ob165	111°42'00"	C		8.32 C		Class C
POST 175 DP 575149	POST 160 DP 575149	ob166	81°41'00"	C		22.41 C		Class C
POST 160 DP 575149	POST 174 DP 575149	ob167	52°57'00"	C		4.81 C		Class C
POST 174 DP 575149	POST 178 DP 575149	ob168	326°47'00"	C		10.12 C		Class C
POST 178 DP 575149	POST 176 DP 575149	ob169	12°27'00"	C		37.88 C		Class C
POST 176 DP 575149	POST 161 DP 575149	ob170	351°35'00"	C		21.29 C		Class C
UNMK 29 DP 431148	UNMK 200 DP 575149	ob172	97°25'00"	A DP 95340	0°00'00"	65.73 C		
UNMK 200 DP 575149	PEG (207) DP 95340	ob177	97°25'00"	A DP 95340	0°00'00"	12.51 C		Class C
PEG (207) DP 95340	PEG (208) DP 95340	ob173	68°37'00"	A DP 95340	0°00'00"	69.65 A DP 95340		Class C
PEG (208) DP 95340	PEG 209 DP 95340	ob174	66°51'00"	A DP 95340	0°00'00"	305.04 A DP 95340		Class C
PEG 209 DP 95340	UNMK 31 DP 431148	ob171	67°54'00"	A DP 95340	0°00'00"	144.10 A DP 431148		Class C
UNMK 31 DP 431148	POST 89 DP 401622	ob175	67°54'00"	A DP 95340	0°00'00"	30.56 A DP 463554		Class C
UNMK 200 DP 575149	POST 1 DP 575149	ob178	196°50'00"	C		2.85 C		Class C
POST 1 DP 575149	POST 2 DP 575149	ob179	125°25'00"	C		35.02 C		Class C
POST 2 DP 575149	POST 3 DP 575149	ob180	131°02'00"	C		16.50 C		Class C
POST 3 DP 575149	POST 4 DP 575149	ob181	222°18'00"	C		20.58 C		Class C
POST 4 DP 575149	POST 5 DP 575149	ob182	162°04'00"	C		5.73 C		Class C

Mark and Vector

Survey Number DP 575149

Meridional Circuit Mount Eden 2000

From	To	Code	Bearing	Adpt Surv	Bearing Correction	Distance	Adpt Surv	Class
POST 5 DP 575149	POST 6 DP 575149	ob183	98°25'00"	C		8.01 C		Class C
POST 6 DP 575149	POST 7 DP 575149	ob184	73°58'00"	C		4.27 C		Class C
POST 7 DP 575149	POST 8 DP 575149	ob185	57°15'00"	C		16.64 C		Class C
POST 8 DP 575149	POST 9 DP 575149	ob186	28°51'00"	C		15.28 C		Class C
POST 9 DP 575149	POST 10 DP 575149	ob187	350°07'00"	C		3.00 C		Class C
POST 10 DP 575149	POST 11 DP 575149	ob188	313°59'00"	C		12.57 C		Class C
POST 11 DP 575149	POST 12 DP 575149	ob189	332°09'00"	C		18.35 C		Class C
POST 12 DP 575149	POST 13 DP 575149	ob190	40°05'00"	C		8.66 C		Class C
POST 13 DP 575149	POST 14 DP 575149	ob191	72°16'00"	C		32.23 C		Class C
POST 14 DP 575149	POST 15 DP 575149	ob192	152°43'00"	C		5.36 C		Class C
POST 15 DP 575149	POST 216 DP 575149	ob193	119°49'00"	C		3.68 C		Class C
POST 216 DP 575149	POST 17 DP 575149	ob194	175°21'00"	C		2.09 C		Class C
POST 17 DP 575149	POST 18 DP 575149	ob195	97°19'00"	C		29.52 C		Class C
POST 18 DP 575149	POST 19 DP 575149	ob196	89°53'00"	C		51.85 C		Class C
POST 19 DP 575149	POST 20 DP 575149	ob197	69°34'00"	C		20.92 C		Class C
POST 20 DP 575149	POST 21 DP 575149	ob198	92°03'30"	C		102.31 C		Class C
POST 21 DP 575149	POST 22 DP 575149	ob199	80°25'00"	C		5.78 C		Class C
POST 22 DP 575149	POST 23 DP 575149	ob200	29°21'00"	C		35.77 C		Class C
POST 23 DP 575149	POST 24 DP 575149	ob201	0°03'30"	C		14.97 C		Class C
POST 24 DP 575149	POST 25 DP 575149	ob202	351°37'00"	C		27.19 C		Class C
POST 25 DP 575149	POST 26 DP 575149	ob203	19°32'00"	C		27.19 C		Class C
POST 26 DP 575149	POST 27 DP 575149	ob204	82°37'00"	C		29.73 C		Class C
POST 27 DP 575149	POST 28 DP 575149	ob205	77°54'00"	C		17.28 C		Class C
POST 28 DP 575149	POST 29 DP 575149	ob206	72°50'00"	C		17.62 C		Class C

Mark and Vector

Survey Number DP 575149

Meridional Circuit Mount Eden 2000

From	To	Code	Bearing	Adpt Surv	Bearing Correction	Distance	Adpt Surv	Class
POST 29 DP 575149	POST 30 DP 575149	ob207	70°12'00"	C		30.39 C		Class C
POST 135 DP 575149	POST 31 DP 575149	ob212	79°29'00"	C		17.36 C		Class C
POST 31 DP 575149	POST 32 DP 575149	ob209	62°48'00"	C		8.93 C		Class C
POST 32 DP 575149	POST 33 DP 575149	ob210	52°01'00"	C		22.64 C		Class C
POST 33 DP 575149	POST 35 DP 575149	ob211	69°09'00"	C		60.46 C		Class C
POST 89 DP 401622	POST 35 DP 575149	ob176	157°11'20"	C		28.87 C		Class C
POST 74 DP 575149	POST 8 DP 575149	ob45	306°47'00"	C		4.26 C		
POST 30 DP 575149	POST 135 DP 575149	ob208	58°23'00"	C		26.75 C		Class C
IT I DP 98999	IT IX DP 98999	ob8	163°48'30"	M		103.93 M		
IT IX DP 98999	PEG (99) DP 98999	ob213	318°32'00"	A DP 98999	0°00'00"	14.20 A DP 98999		
PEG (99) DP 98999	PEG 132 DP 463554	ob214	190°26'00"	A SO 178	0°00'00"	168.58 A SO 178		
PEG 132 DP 463554	PEG 179 DP 463554	ob215	180°56'00"	A DP 463554	0°00'00"	11.45 A DP 463554		
PEG 179 DP 463554	PEG XXVII SO 11094	ob216	268°12'00"	A DP 24929	0°00'00"	20.14 A DP 24929		
PEG XXVII SO 11094	LP (56) DP 24929	ob217	268°56'30"	A DP 24929	0°00'00"	125.29 A DP 24929		
LP (56) DP 24929	LP (57) DP 24929	ob218	268°56'30"	A DP 24929	0°00'00"	114.81 A DP 24929		
LP (57) DP 24929	PEG (58) DP 24929	ob219	268°56'30"	A DP 24929	0°00'00"	103.08 A DP 24929		
PEG (58) DP 24929	LP (59) DP 24929	ob220	268°56'30"	A DP 24929	0°00'00"	277.87 A DP 24929		
LP (59) DP 24929	PEG (129) DP 24929	ob221	168°13'00"	A DP 24929	0°00'00"	51.94 A DP 24929		
UNMK 131 DP 575149	PEG (12) DP 24929	ob118	228°53'30"	A DP 24929	0°00'00"			
POST 138 DP 575149	UNMK 131 DP 575149	ob116	308°48'00"	C		22.04 C		Class D
POST 141 DP 575149	UNMK 130 DP 575149	ob120	76°50'30"	C		10.64 C		Class D
PEG (129) DP 24929	UNMK 130 DP 575149	ob222	228°53'30"	A DP 24929	0°00'00"			
UNMK 130 DP 575149	UNMK 131 DP 575149	ob223	228°53'30"	A DP 24929	0°00'00"			Class D

Mark and Vector

Survey Number DP 575149

Meridional Circuit Mount Eden 2000

Mark Name	Mark Condition	Description
IS VIII DP 575149		In Paddock Down 0.3m
IS XXXXI DP 575149		Top of Hill Down 0.3m
IT C DP 28396		Flush with Ground
IT I DP 71774		Iron tube in grass paddock, buried 0.2m deep.
IT I DP 98999		Down 0.3m
IT IX DP 98999		Down 0.4m
IT V DP 95340		Down 0.3m
IT VI DP 111592		Top of Hill Down 0.3m
IT VI DP 130680		0.1m Down in Metal
IT VIII DP 111592		Down 0.4m
IT VIII DP 49183		Down 0.3m
POST 89 DP 401622		Covenant bdy

*** End of Report ***

Schedule / Memorandum

Land Registration District

North Auckland

Survey Number

LT 575149

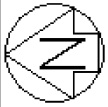
Territorial Authority (the Council)

Auckland Council

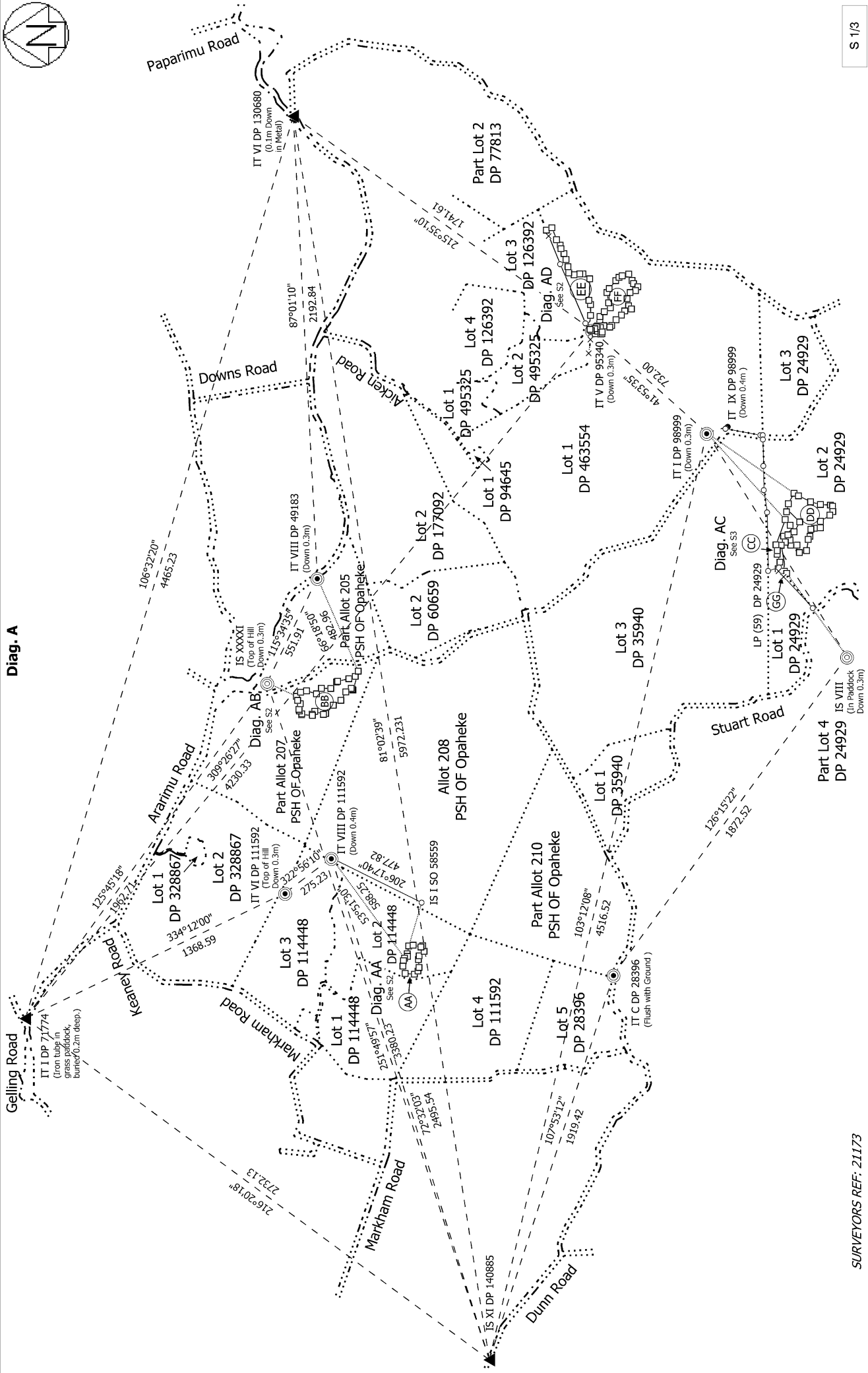
Notes

Last Edited: 01 Jun 2022 15:59:11

Areas AA, BB, CC, DD, EE, FF and GG are subject to Land Covenant under Queen Elizabeth II Trust (QEII Trust)



Diag. A



S 1/3

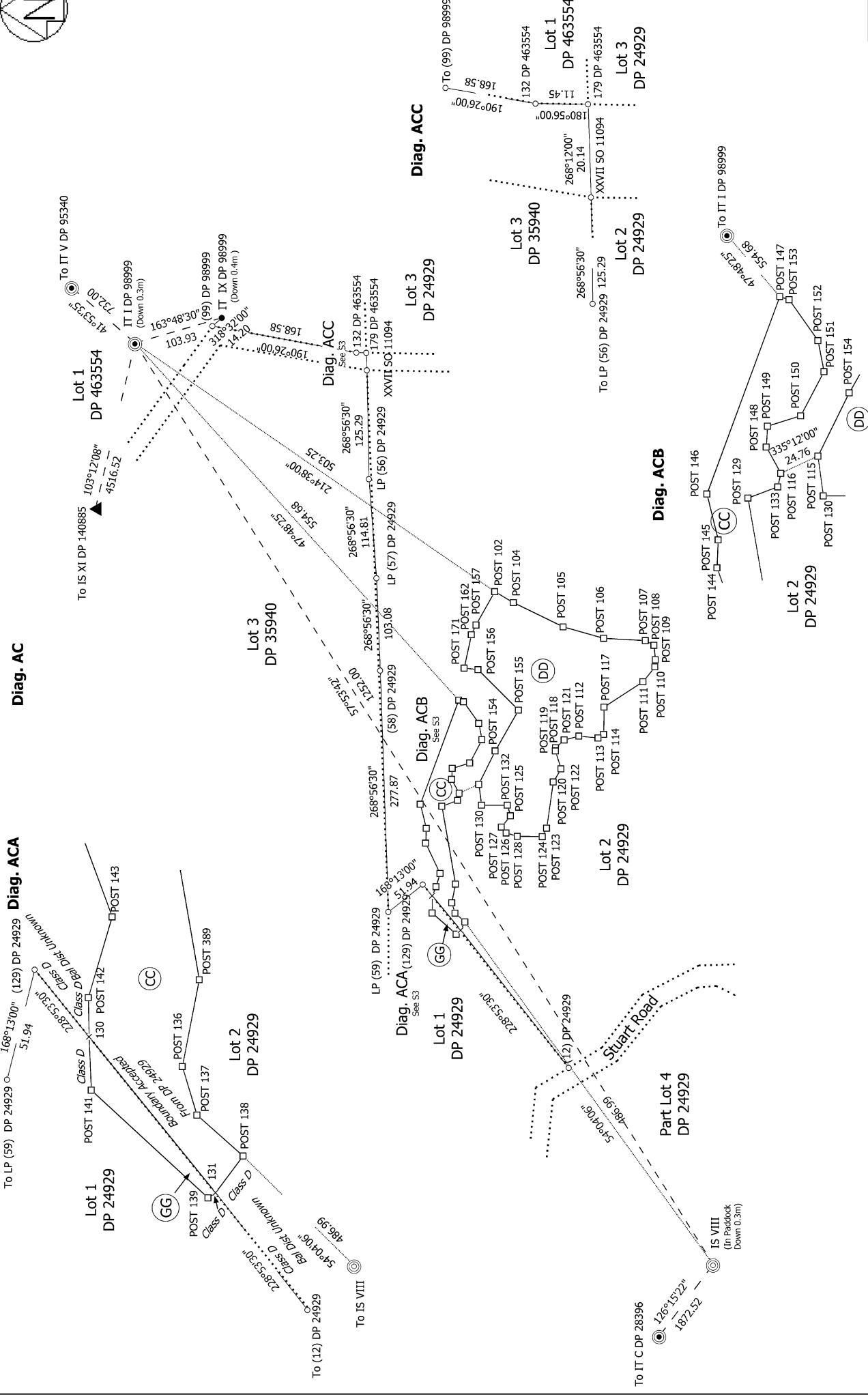
<p>Land District: North Auckland</p> <p>Digitally Generated Plan</p> <p>Generated on: 12/07/2023 11:13am Page 14 of 20</p>	<p>Covenants on Lot 2 DP 114448, Lot 1 DP 24929, Lot 2 DP 24929, Lot 1 DP 463554 & Allotment 207 Parish of Opaheke</p>	<p>Surveyor: Daniel Luke Guthrie</p> <p>Firm: Tripp Andrews Surveyors Ltd</p> <p>Date of Survey: 28/03/2022</p>	<p>Record of Survey</p> <p>DP 575149</p> <p>Deposited on: 22/06/2023</p>
---	--	---	--

SURVEYORS REF: 21173



Diag. AC

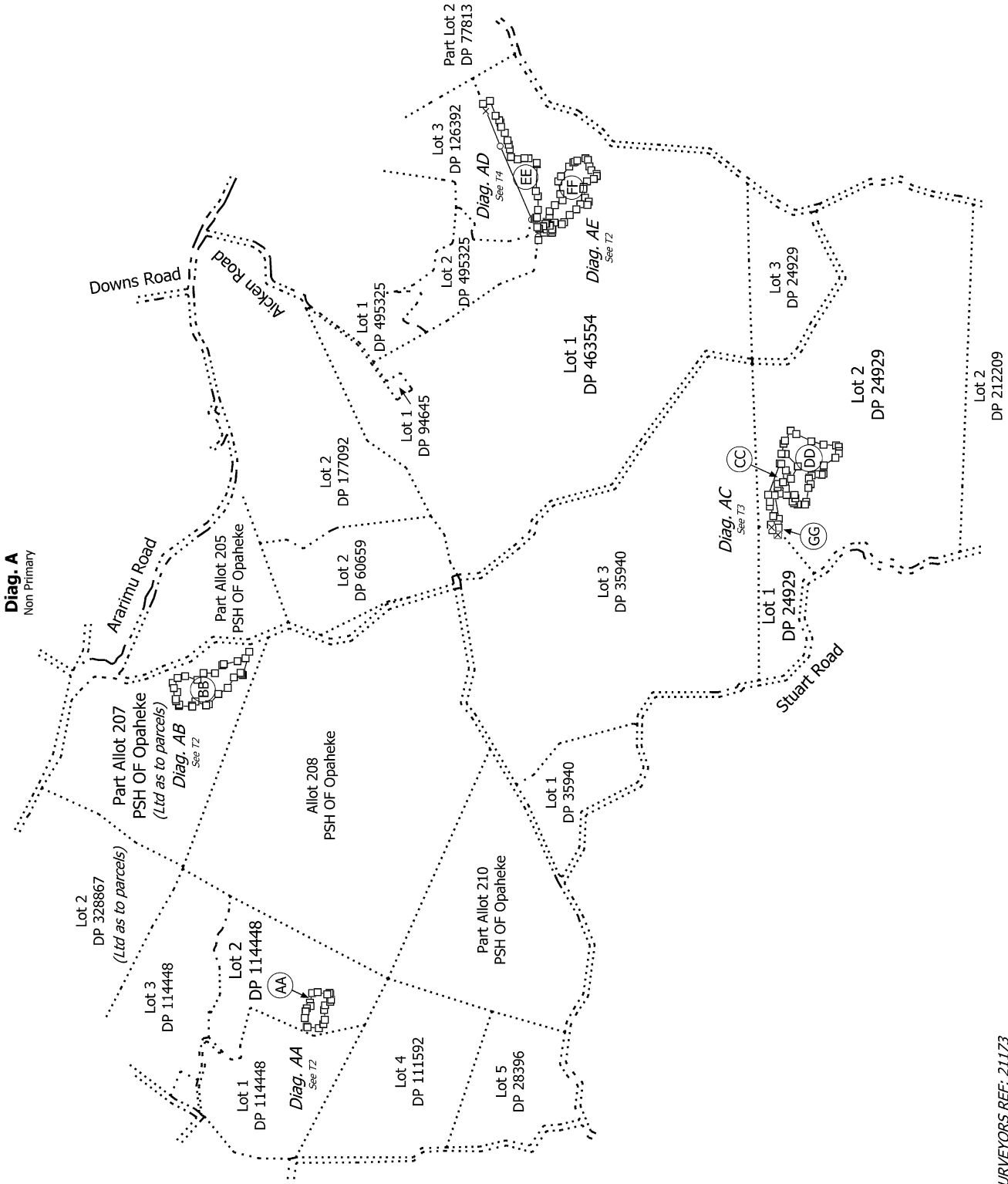
Diag. AC.A



Land District: North Auckland	Covenants on Lot 2 DP 114448, Lot 1 DP 24929, Lot 2 DP 24929, Lot 1 DP 463554 & Allotment 207 Parish of Opaheke	Surveyor: Daniel Luke Guthrie Firm: Tripp Andrews Surveyors Ltd Date of Survey: 28/03/2022	Record of Survey DP 575149
Digitally Generated Plan Generated on: 12/07/2023 11:13am Page 16 of 20		Deposited on: 22/06/2023	



Diag. A
Non Primary



T 1/4

SURVEYORS REF: 21173

Land District: North Auckland

Digitally Generated Plan

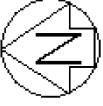
Generated on: 12/07/2023 11:13am | Page 17 of 20

Covenants on Lot 2 DP 114448, Lot 1 DP 24929, Lot 2 DP 24929, Lot 1 DP 463554 & Allotment 207 Parish of Opaheke

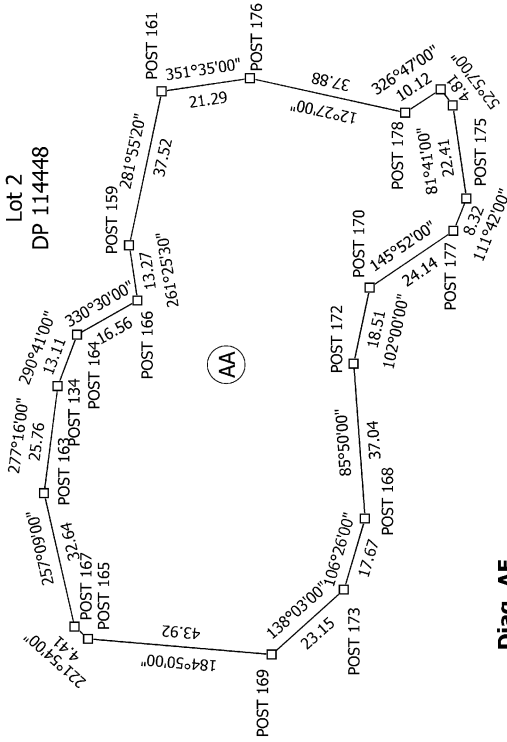
Surveyor: Daniel Luke Guthrie
Firm: Tripp Andrews Surveyors Ltd
Date of Survey: 28/03/2022

Record of Survey
DP 575149

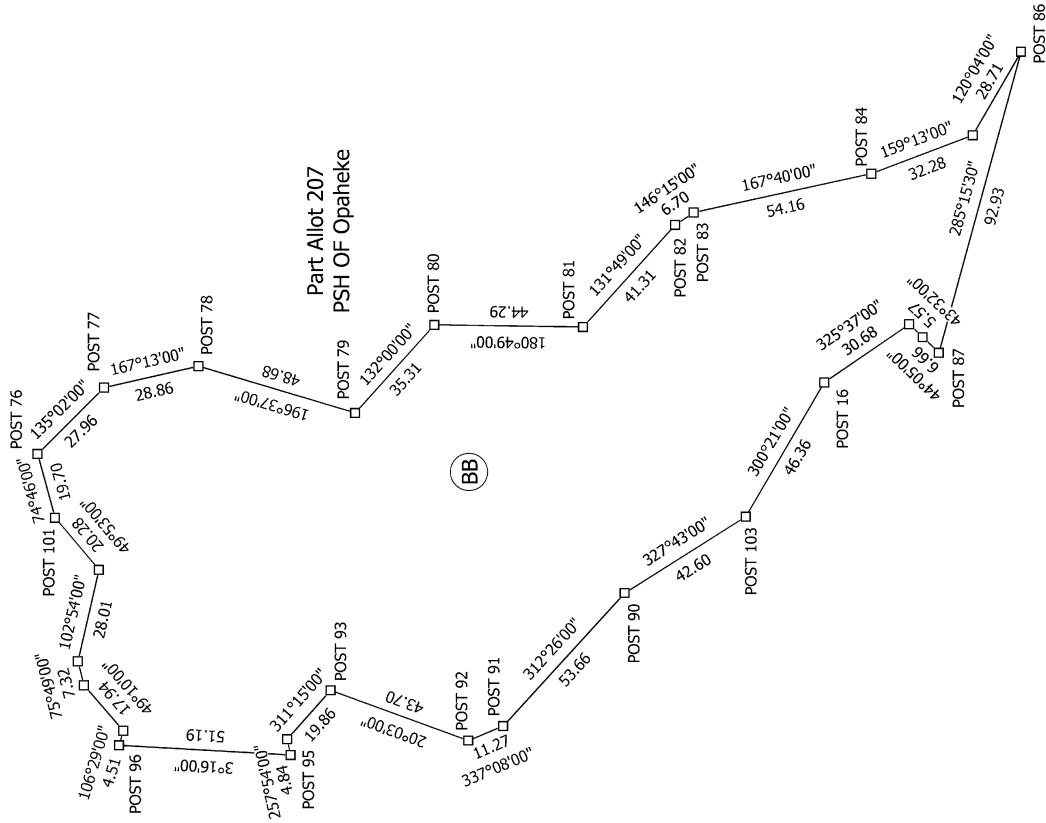
Deposited on: 22/06/2023



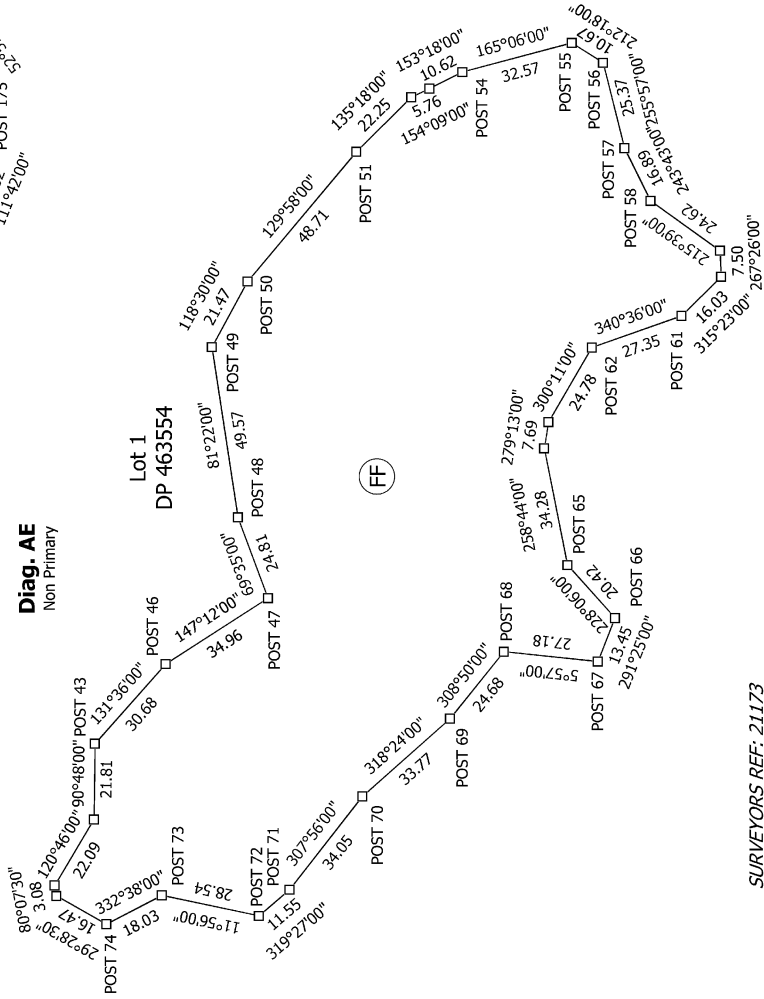
Diag. AA
Non Primary



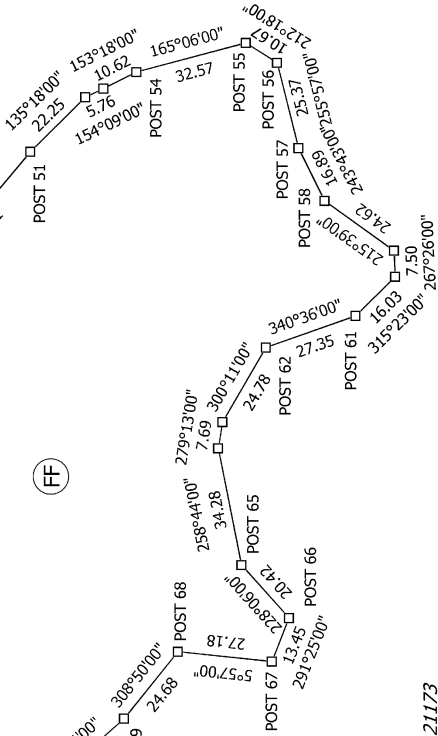
Diag. AB
Non Primary



Diag. AE
Non Primary



Diag. FF



SURVEYORS REF: 21173

Land District: North Auckland

Digitally Generated Plan

Generated on: 12/07/2023 11:13am Page 18 of 20

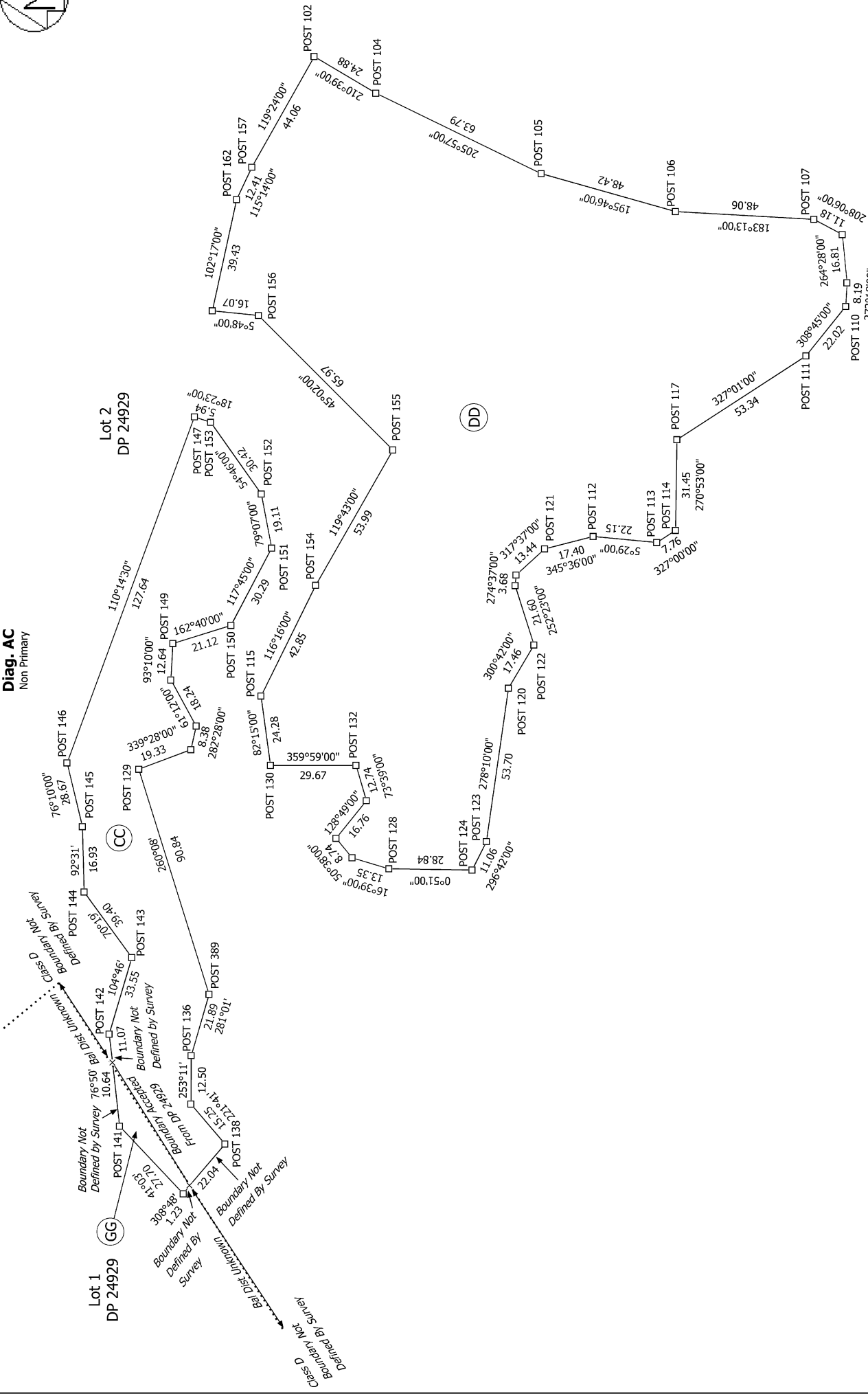
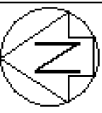
Covenants on Lot 2 DP 114448, Lot 1 DP 24929, Lot 2 DP 24929, Lot 1 DP 463554 & Allotment 207 Parish of Opaheke

Surveyor: Daniel Luke Guthrie
Firm: Tripp Andrews Surveyors Ltd
Date of Survey: 28/03/2022

Record of Survey
DP 575149

Deposited on: 22/06/2023

Diag. AC
Non Primary



SURVEYORS REF: 21173

T 3/4

Land District: North Auckland
Digitally Generated Plan
Generated on: 12/07/2023 11:13am | Page 19 of 20

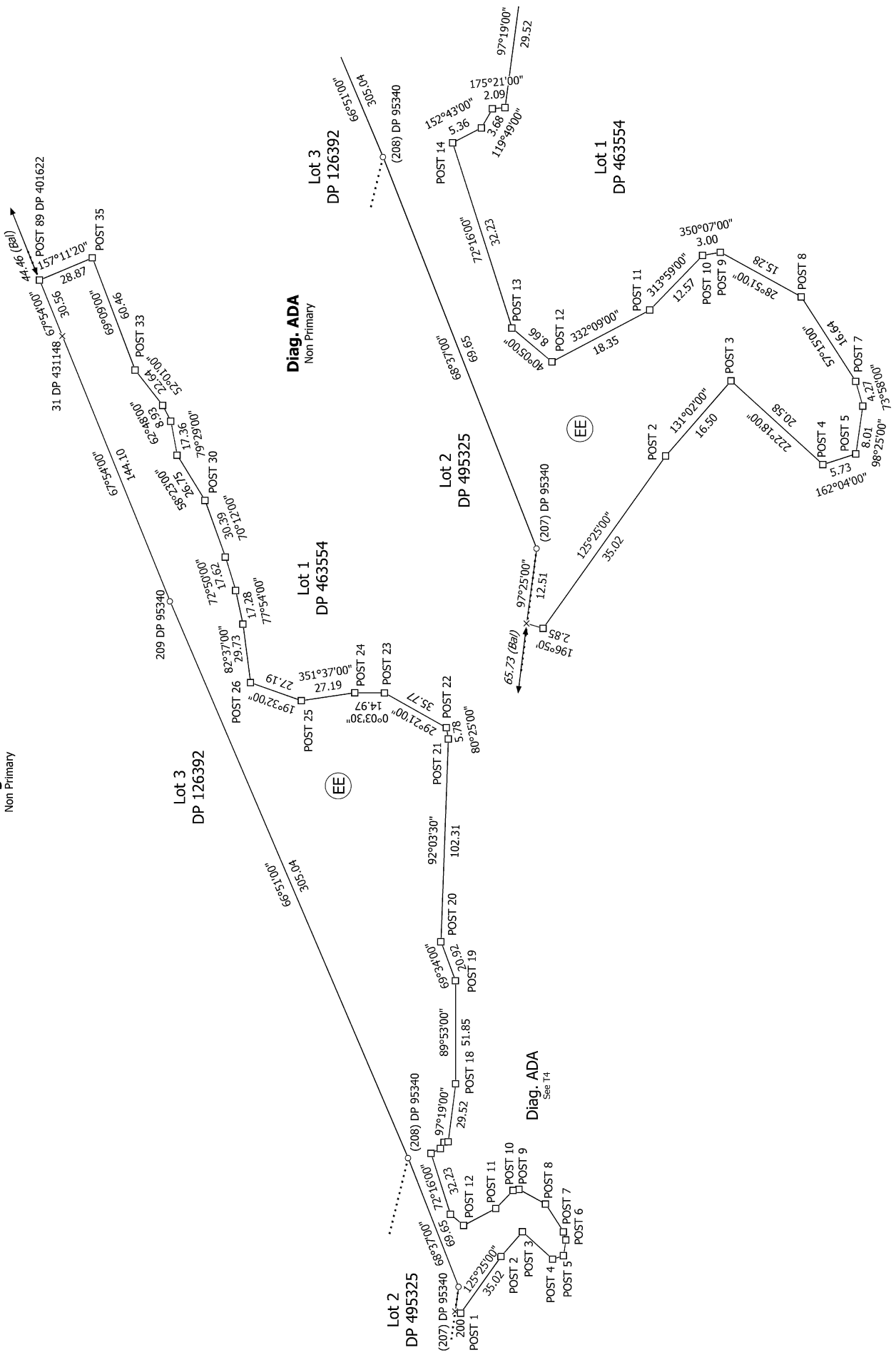
Covenants on Lot 2 DP 114448, Lot 1 DP 24929, Lot 2 DP 24929, Lot 1 DP 463554 & Allotment 207 Parish of Opaheke

Surveyor: Daniel Luke Guthrie
Firm: Tripp Andrews Surveyors Ltd
Date of Survey: 28/03/2022

Record of Survey
DP 575149
Deposited on: 22/06/2023



Diag. AD
Non Primary



T 4/4

SURVEYORS REF: 21173

Land District: North Auckland

Digitally Generated Plan

Generated on: 12/07/2023 11:13am | Page 20 of 20

Covenants on Lot 2 DP 114448, Lot 1 DP 24929, Lot 2 DP 24929, Lot 1 DP 463554 & Allotment 207 Parish of Opaheke

Surveyor: Daniel Luke Guthrie
Firm: Tripp Andrews Surveyors Ltd
Date of Survey: 28/03/2022

Record of Survey
DP 575149

Deposited on: 22/06/2023