



# Record of Survey - DP 574143

---

**Survey Number** DP 574143  
**Surveyor Reference** 2216a Barclay Ease  
**Surveyor** Stuart Allan Calder  
**Survey Firm** Calder Surveying Limited  
**Surveyor Declaration** I Stuart Allan Calder, being a licensed cadastral surveyor, certify that--  
(a) this dataset provided by me and its related survey are accurate, correct and in accordance with the Cadastral Survey Act 2002 and Cadastral Survey Rules 2021; and  
(b) the survey was undertaken by me or under my personal direction.  
Declared on 24 Jan 2023 10:21 AM

---

## Survey Details

**Dataset Description** EASEMENTS OVER SECTION 35 AND PARTS SECTION 36, 37, 38, 56, 57 & 58 BLOCK III BENDER SURVEY DISTRICT.

**Purpose** Easement

**Status** Deposited **Type** Survey

**Land District** Otago **Survey Class** Class B

**Meridional Circuit** North Taieri 2000 **Vertical Datum** None

---

## Survey Dates

**Surveyed Date** 18/03/2022 **Certified Date** 24/01/2023  
**Submitted Date** 24/01/2023 10:21:49 **Survey Approval Date** 01/02/2023  
**Deposit Date** 21/09/2023

---

## Referenced Surveys

Survey Number	Land District	Bearing Correction
SO 15172	Otago	0°00'00"
SO 9875	Otago	0°00'00"
DP 15909	Otago	-0°01'00"
SO 168	Otago	0°00'00"
SO 17345	Otago	0°00'00"
SO 17347	Otago	0°00'00"
SO 23569	Otago	0°00'00"
SO 504188	Otago	0°00'00"

---

## Territorial Authorities

Central Otago District

---

## Comprised In

RT OT10D/534  
RT OT7A/357  
RT OT17C/97  
RT OT3C/673



# Record of Survey - DP 574143

---

## Created Parcels

Parcels	Parcel Intent	Area	RT Reference
Area A Deposited Plan 574143	Easement		
Area B Deposited Plan 574143	Easement		
Area C Deposited Plan 574143	Easement		
Area D Deposited Plan 574143	Easement		
Area E Deposited Plan 574143	Easement		
Area F Deposited Plan 574143	Easement		
<b>Total Area</b>		<hr/> 0.0000 Ha	

# Mark and Vector

Survey Number DP 574143

Meridional Circuit North Taieri 2000

From	To	Code	Bearing	Adpt Surv	Bearing Correction	Distance	Adpt Surv	Class
Millers Flat	NAIL III SO 504188	ob156	150°42'15" M			1,946.93 M		
NAIL III SO 504188	IT II DP 574143	ob143	29°36'20" M			592.47 M		
IT II DP 574143	IT III DP 574143	ob146	299°59'00" M			658.81 M		
IT III DP 574143	IT I DP 15909	ob148	287°51'30" M			358.98 M		
IT I DP 15909	IT VI DP 15909	ob150	352°09'10" M			250.74 M		
IT VI DP 15909	IS VII DP 15909	ob153	326°39'30" M			117.66 M		
IS VII DP 15909	Millers Flat	ob154	329°27'20" M			460.73 M		
Millers Flat	IT I DP 15909	ob157	155°52'15" M			814.67 M		
NAIL III SO 504188	IT II(A) SO 23569	ob144	311°19'10" A	SO 504188	0°00'00"	153.45 A	SO 504188	
IT II(A) SO 23569	PEG (21) SO 17347	ob0	221°42'00" A	SO 504188	0°00'00"	22.00 A	SO 504188	
PEG (21) SO 17347	IT XIII SO 17347	ob3	12°10'00" A	SO 17347	0°00'00"	9.74 A	SO 17347	
IT XIII SO 17347	IT XIV SO 17347	ob4	333°39'00" A	SO 17347	0°00'00"	82.64 A	SO 17347	
IT XIV SO 17347	IT XV SO 17347	ob5	305°33'00" A	SO 17347	0°00'00"	69.16 A	SO 17347	
IT XV SO 17347	IT XVI SO 17347	ob6	330°32'00" A	SO 17347	0°00'00"	76.10 A	SO 17347	
IT XVI SO 17347	IT XVII SO 17347	ob7	322°36'00" A	SO 17347	0°00'00"	83.71 A	SO 17347	
IT XVII SO 17347	IS XVIIA SO 17347	ob8	317°02'30" A	SO 17347	0°00'00"	95.31 A	SO 17347	
IS XVIIA SO 17347	IT XVIII SO 17347	ob9	317°02'30" A	SO 17347	0°00'00"	49.08 A	SO 17347	
IT XVIII SO 17347	IT I SO 23569	ob1	333°41'10" A	SO 23569	0°00'00"	371.57 A	SO 23569	
IT I SO 23569	IT I DP 15909	ob2	344°46'10" A	SO 23569	0°00'00"	180.63 A	SO 23569	
IS VII DP 15909	POST (2) DP 15909	ob155	358°14'00" A	DP 15909	-0°01'00"	7.87 A	DP 15909	
POST (2) DP 15909	POST (3) DP 15909	ob10	146°42'40" A	DP 15909	-0°01'00"	119.32 A	DP 15909	
POST (3) DP 15909	PEG (4) DP 15909	ob12	151°38'10" A	DP 15909	-0°01'00"	293.31 A	DP 15909	
PEG (4) DP 15909	IS V DP 15909	ob13	260°30'00" A	DP 15909	-0°01'00"	16.93 A	DP 15909	
IS V DP 15909	IS II DP 15909	ob161	281°25'10" A	DP 15909	-0°01'00"	101.61 A	DP 15909	
IS II DP 15909	IT I DP 15909	ob160	142°56'10" A	SO 23569	0°00'00"	17.60 A	DP 15909	
POST (2) DP 15909	PEG (1) DP 15909	ob11	237°14'20" A	DP 15909	-0°01'00"	125.96 A	DP 15909	
PEG (1) DP 15909	UNMK DP 15909	ob159	322°56'00" A	DP 15909	-0°01'00"	176.71 A	DP 15909	

# Mark and Vector

Survey Number DP 574143

Meridional Circuit North Taieri 2000

From	To	Code	Bearing	Adpt Surv	Bearing Correction	Distance	Adpt Surv	Class
UNMK DP 15909	UNMK 20 DP 574143	ob14	60°36'00"	C		71.14 C		
UNMK 20 DP 574143	UNMK 21 DP 574143	ob69	60°36'00"	C		6.93 C		Class B
UNMK 21 DP 574143	UNMK 100 DP 574143	ob72	60°36'00"	C		715.54 C		
UNMK 100 DP 574143	PEG (3) SO 168	ob16	150°36'30"	A SO 168	0°00'00"	585.80 C		
PEG (3) SO 168	UNMK (20) SO 168	ob17	150°36'30"	A SO 168	0°00'00"	13.24 A SO 168		
UNMK (20) SO 168	PEG 6 SO 168	ob26	281°13'00"	A SO 168	0°00'00"	67.09 A SO 168		
PEG 6 SO 168	PEG 7 SO 168	ob18	253°44'00"	A SO 168	0°00'00"	94.79 A SO 168		
PEG 7 SO 168	PEG 8 SO 168	ob20	182°38'00"	A SO 168	0°00'00"	45.87 A SO 168		
PEG 8 SO 168	PEG (5) SO 168	ob21	226°36'30"	A SO 168	0°00'00"	394.09 A SO 168		
PEG (5) SO 168	PEG (21) SO 168	ob22	343°20'00"	A SO 168	0°00'00"	11.27 A SO 168		
PEG (21) SO 168	UNMK 3 DP 574143	ob25	280°04'30"	A DP 15909	-0°01'00"	19.43 C		
UNMK 3 DP 574143	UNMK 4 DP 574143	ob33	280°04'30"	A DP 15909	0°00'00"	6.05 C		Class B
UNMK 4 DP 574143	PEG (4) DP 15909	ob34	280°04'30"	A DP 15909	-0°01'00"	96.04 C		
UNMK DP 15909	UNMK 1 DP 574143	ob15	322°57'00"	A SO 168	0°00'00"	164.75 C		
UNMK 1 DP 574143	UNMK 2 DP 574143	ob28	322°57'00"	A SO 168	0°00'00"	6.04 C		Class B
UNMK 2 DP 574143	PEG (22) SO 168	ob29	322°57'00"	A SO 168	0°00'00"	440.35 C		
PEG (22) SO 168	PEG (23) SO 168	ob19	250°47'00"	A SO 168	0°00'00"	21.12 A SO 168		
PEG (23) SO 168	PEG SO 168	ob24	142°57'00"	A SO 168	0°00'00"	1,142.19 C		
PEG SO 168	PEG (12) SO 168	ob27	70°23'00"	A SO 168	0°00'00"	21.08 A SO 168		
PEG (12) SO 168	PEG (10) DP 15909	ob31	322°56'00"	A DP 15909	-0°01'00"	14.79 A DP 15909		
PEG (10) DP 15909	IS II DP 15909	ob32	261°19'00"	A DP 15909	-0°01'00"	10.23 A DP 15909		
IT I DP 15909	IT XCVI SO 15172	ob151	240°08'00"	A DP 15909	-0°01'00"	10.06 A DP 15909		
IT XCVI SO 15172	IT XCV SO 15172	ob44	157°35'00"	A SO 15172	0°00'00"	504.16 A SO 15172		
IT XCV SO 15172	PEG a2 SO 9875	ob45	60°43'00"	A SO 9875	0°00'00"	20.26 A SO 9875		
PEG a2 SO 9875	UNMK SO 15172	ob47	143°58'00"	A SO 9875	0°00'00"	35.89 A SO 15172		
UNMK SO 15172	PEG (1) SO 17347	ob48	143°58'00"	A SO 9875	0°00'00"	48.68 A SO 15172		
PEG (1) SO 17347	IS XVIIA SO 17347	ob50	202°44'00"	A SO 17347	0°00'00"	14.95 A SO 17347		

# Mark and Vector

Survey Number DP 574143

Meridional Circuit North Taieri 2000

From	To	Code	Bearing	Adpt Surv	Bearing Correction	Distance	Adpt Surv	Class
UNMK SO 15172	UNMK 7 DP 574143	ob49	95°17'00"	C		605.84 C		
UNMK 7 DP 574143	UNMK 8 DP 574143	ob63	95°17'00"	C		15.00 C		Class D
UNMK 8 DP 574143	UNMK SO 9875	ob66	95°17'00"	C		614.85 C		
UNMK SO 9875	PEG (24) SO 168	ob51	335°24'00"	A SO 168	0°00'00"	23.23 C		
PEG (24) SO 168	PEG 1 SO 168	ob52	72°30'00"	A SO 168	0°00'00"	10.14 A SO 168		
PEG 1 SO 168	PEG 9 SO 168	ob53	349°35'30"	A SO 168	0°00'00"	600.49 A SO 168		
PEG 9 SO 168	PEG 10 SO 168	ob54	265°22'00"	A SO 168	0°00'00"	152.38 A SO 168		
PEG 10 SO 168	PEG 11 SO 168	ob55	277°20'00"	A SO 168	0°00'00"	193.32 A SO 168		
PEG 11 SO 168	PEG 12 SO 168	ob56	216°14'00"	A SO 168	0°00'00"	38.95 A SO 168		
PEG 12 SO 168	PEG 13 SO 168	ob57	195°35'00"	A SO 168	0°00'00"	100.79 A SO 168		
PEG 13 SO 168	PEG 14 SO 168	ob58	220°25'00"	A SO 168	0°00'00"	168.48 A SO 168		
PEG 14 SO 168	PEG 15 SO 168	ob59	288°32'00"	A SO 168	0°00'00"	79.36 A SO 168		
PEG 15 SO 168	PEG 16 SO 168	ob60	296°15'00"	A SO 168	0°00'00"	195.74 A SO 168		
PEG 16 SO 168	PEG 17 SO 168	ob61	281°29'00"	A SO 168	0°00'00"	183.47 A SO 168		
PEG 17 SO 168	PEG (5) SO 168	ob62	286°21'00"	A SO 168	0°00'00"	192.12 A SO 168		
PEG (5) SO 168	UNMK 5 DP 574143	ob23	280°05'30"	A SO 168	0°00'00"	14.98 C		
UNMK 5 DP 574143	UNMK 6 DP 574143	ob36	280°05'30"	A SO 168	0°00'00"	6.76 C		Class B
UNMK 6 DP 574143	PEG (12) SO 168	ob38	280°05'30"	A SO 168	0°00'00"	201.86 C		
UNMK 2 DP 574143	UNMK 9 DP 574143	ob30	59°44'30"	C		41.22 C		Class B
UNMK 9 DP 574143	UNMK 10 DP 574143	ob39	123°34'00"	C		37.30 C		Class B
UNMK 10 DP 574143	UNMK 11 DP 574143	ob40	140°01'00"	C		7.91 C		Class B
UNMK 11 DP 574143	UNMK 28 DP 574143	ob41	147°49'30"	C		45.90 C		Class B
UNMK 28 DP 574143	UNMK 12 DP 574143	ob68	147°49'30"	C		6.21 C		Class B
UNMK 12 DP 574143	UNMK 29 DP 574143	ob42	158°37'00"	C		4.06 C		Class B
UNMK 29 DP 574143	UNMK 13 DP 574143	ob86	158°37'00"	C		12.89 C		Class B
UNMK 13 DP 574143	UNMK 14 DP 574143	ob43	141°35'00"	C		16.73 C		Class B
UNMK 14 DP 574143	UNMK 15 DP 574143	ob46	129°40'00"	C		24.07 C		Class B
UNMK 15 DP 574143	UNMK 21 DP 574143	ob67	95°52'00"	C		36.49 C		Class B
UNMK 20 DP 574143	UNMK 16 DP 574143	ob70	275°52'00"	C		32.04 C		Class B

# Mark and Vector

Survey Number DP 574143

Meridional Circuit North Taieri 2000

From	To	Code	Bearing	Adpt Surv	Bearing Correction	Distance	Adpt Surv	Class
UNMK 16 DP 574143	UNMK 17 DP 574143	ob74	309°40'00"	C		25.71 C		Class B
UNMK 17 DP 574143	UNMK 18 DP 574143	ob75	321°35'00"	C		17.68 C		Class B
UNMK 18 DP 574143	UNMK 19 DP 574143	ob76	336°43'00"	C		12.64 C		Class B
UNMK 19 DP 574143	UNMK 22 DP 574143	ob77	236°53'00"	C		13.73 C		Class B
UNMK 22 DP 574143	UNMK 23 DP 574143	ob79	321°18'00"	C		5.33 C		Class B
UNMK 23 DP 574143	UNMK 24 DP 574143	ob80	42°57'00"	C		14.05 C		Class B
UNMK 24 DP 574143	UNMK 25 DP 574143	ob81	327°49'30"	C		47.09 C		Class B
UNMK 25 DP 574143	UNMK 26 DP 574143	ob83	320°01'00"	C		6.63 C		Class B
UNMK 26 DP 574143	UNMK 27 DP 574143	ob84	303°34'00"	C		32.70 C		Class B
UNMK 27 DP 574143	UNMK 1 DP 574143	ob85	239°44'30"	C		36.76 C		Class B
UNMK 24 DP 574143	UNMK 28 DP 574143	ob82	42°57'00"	C		6.22 C		Class B
UNMK 19 DP 574143	UNMK 29 DP 574143	ob78	56°53'00"	C		4.49 C		Class B
UNMK 21 DP 574143	UNMK 30 DP 574143	ob73	100°54'00"	C		14.80 C		Class B
UNMK 30 DP 574143	UNMK 31 DP 574143	ob87	118°57'20"	C		52.92 C		Class B
UNMK 31 DP 574143	UNMK 32 DP 574143	ob88	135°17'00"	C		17.07 C		Class B
UNMK 32 DP 574143	UNMK 33 DP 574143	ob89	154°57'00"	C		26.29 C		Class B
UNMK 33 DP 574143	UNMK 34 DP 574143	ob90	144°40'00"	C		23.93 C		Class B
UNMK 34 DP 574143	UNMK 35 DP 574143	ob91	129°31'00"	C		20.85 C		Class B
UNMK 35 DP 574143	UNMK 36 DP 574143	ob92	107°41'00"	C		43.91 C		Class B
UNMK 36 DP 574143	UNMK 37 DP 574143	ob93	130°51'00"	C		16.38 C		Class B
UNMK 37 DP 574143	UNMK 38 DP 574143	ob94	143°20'40"	C		140.33 C		Class B
UNMK 38 DP 574143	UNMK 39 DP 574143	ob95	145°26'30"	C		46.40 C		Class B
UNMK 39 DP 574143	UNMK 40 DP 574143	ob96	138°17'30"	C		56.57 C		Class B
UNMK 40 DP 574143	UNMK 41 DP 574143	ob97	127°50'00"	C		12.78 C		Class B

# Mark and Vector

Survey Number DP 574143

Meridional Circuit North Taieri 2000

From	To	Code	Bearing	Adpt Surv	Bearing Correction	Distance	Adpt Surv	Class
UNMK 41 DP 574143	UNMK 42 DP 574143	ob98	147°27'00"	C		31.56 C		Class B
UNMK 42 DP 574143	UNMK 43 DP 574143	ob99	136°45'00"	C		12.04 C		Class B
UNMK 43 DP 574143	UNMK 44 DP 574143	ob100	145°50'00"	C		36.84 C		Class B
UNMK 44 DP 574143	UNMK 45 DP 574143	ob101	141°55'00"	C		88.02 C		Class B
UNMK 45 DP 574143	UNMK 3 DP 574143	ob102	141°26'00"	C		37.84 C		Class B
UNMK 4 DP 574143	UNMK 46 DP 574143	ob35	321°26'00"	C		33.32 C		Class B
UNMK 46 DP 574143	UNMK 47 DP 574143	ob103	321°55'00"	C		88.18 C		Class B
UNMK 47 DP 574143	UNMK 48 DP 574143	ob104	325°50'00"	C		36.66 C		Class B
UNMK 48 DP 574143	UNMK 49 DP 574143	ob105	316°45'00"	C		12.09 C		Class B
UNMK 49 DP 574143	UNMK 50 DP 574143	ob106	327°27'00"	C		31.24 C		Class B
UNMK 50 DP 574143	UNMK 51 DP 574143	ob107	307°50'00"	C		12.45 C		Class B
UNMK 51 DP 574143	UNMK 52 DP 574143	ob108	318°17'30"	C		57.19 C		Class B
UNMK 52 DP 574143	UNMK 53 DP 574143	ob109	325°26'30"	C		46.58 C		Class B
UNMK 53 DP 574143	UNMK 54 DP 574143	ob110	323°20'40"	C		139.82 C		Class B
UNMK 54 DP 574143	UNMK 55 DP 574143	ob111	310°51'00"	C		15.12 C		Class B
UNMK 55 DP 574143	POST (2) DP 15909	ob112	287°30'00"	C		9.78 C		Class B
UNMK 20 DP 574143	UNMK 56 DP 574143	ob71	99°31'00"	C		19.49 C		Class B
UNMK 56 DP 574143	UNMK 57 DP 574143	ob113	118°57'20"	C		51.68 C		Class B
UNMK 57 DP 574143	UNMK 58 DP 574143	ob114	135°17'00"	C		15.81 C		Class B
UNMK 58 DP 574143	UNMK 59 DP 574143	ob115	154°57'00"	C		25.95 C		Class B
UNMK 59 DP 574143	UNMK 60 DP 574143	ob116	144°40'00"	C		24.82 C		Class B
UNMK 60 DP 574143	UNMK 61 DP 574143	ob117	129°31'00"	C		22.16 C		Class B
UNMK 61 DP 574143	POST (2) DP 15909	ob118	107°44'00"	C		34.07 C		Class B
UNMK 5 DP 574143	UNMK 62 DP 574143	ob37	136°33'30"	C		111.89 C		Class B

# Mark and Vector

Survey Number DP 574143

Meridional Circuit North Taieri 2000

From	To	Code	Bearing	Adpt Surv	Bearing Correction	Distance	Adpt Surv	Class
UNMK 62 DP 574143	UNMK 63 DP 574143	ob119	125°22'00"	C		52.21 C		Class B
UNMK 63 DP 574143	UNMK 64 DP 574143	ob120	127°46'00"	C		48.60 C		Class B
UNMK 64 DP 574143	UNMK 65 DP 574143	ob121	142°48'00"	C		28.21 C		Class B
UNMK 65 DP 574143	UNMK 66 DP 574143	ob122	157°40'00"	C		28.10 C		Class B
UNMK 66 DP 574143	UNMK 67 DP 574143	ob123	131°21'00"	C		39.50 C		Class B
UNMK 67 DP 574143	UNMK 68 DP 574143	ob124	122°01'30"	C		120.73 C		Class B
UNMK 68 DP 574143	UNMK 69 DP 574143	ob125	126°37'00"	C		62.44 C		Class B
UNMK 69 DP 574143	UNMK 70 DP 574143	ob126	132°19'45"	C		78.68 C		Class B
UNMK 70 DP 574143	UNMK 71 DP 574143	ob127	129°23'30"	C		77.90 C		Class B
UNMK 71 DP 574143	UNMK 72 DP 574143	ob128	125°34'00"	C		129.27 C		Class B
UNMK 72 DP 574143	UNMK 8 DP 574143	ob129	119°52'00"	C		41.67 C		Class D
UNMK 7 DP 574143	UNMK 73 DP 574143	ob64	304°21'20"	C		28.36 C		Class D
UNMK 73 DP 574143	UNMK 74 DP 574143	ob130	305°34'00"	C		129.56 C		Class B
UNMK 74 DP 574143	UNMK 75 DP 574143	ob131	309°23'30"	C		78.14 C		Class B
UNMK 75 DP 574143	UNMK 76 DP 574143	ob132	312°19'45"	C		78.59 C		Class B
UNMK 76 DP 574143	UNMK 77 DP 574143	ob133	306°37'00"	C		62.08 C		Class B
UNMK 77 DP 574143	UNMK 78 DP 574143	ob134	302°01'30"	C		120.87 C		Class B
UNMK 78 DP 574143	UNMK 79 DP 574143	ob135	311°21'00"	C		40.79 C		Class B
UNMK 79 DP 574143	UNMK 80 DP 574143	ob136	337°40'00"	C		28.51 C		Class B
UNMK 80 DP 574143	UNMK 81 DP 574143	ob137	322°48'00"	C		27.16 C		Class B
UNMK 81 DP 574143	UNMK 82 DP 574143	ob138	307°46'00"	C		47.98 C		Class B
UNMK 82 DP 574143	UNMK 83 DP 574143	ob139	305°22'00"	C		52.53 C		Class B
UNMK 83 DP 574143	UNMK 6 DP 574143	ob140	316°33'30"	C		117.69 C		Class B
UNMK 7 DP 574143	UNMK 84 DP 574143	ob65	185°21'00"	C		10.00 C		Class D



# Mark and Vector

Survey Number DP 574143

Meridional Circuit North Taieri 2000

From	To	Code	Bearing	Adpt Surv	Bearing Correction	Distance	Adpt Surv	Class
UNMK 84 DP 574143	UNMK 85 DP 574143	ob141	95°21'00"	C		15.00 C		Class B
UNMK 85 DP 574143	UNMK 8 DP 574143	ob142	5°21'00"	C		10.00 C		Class D
Millers Flat	UNMK 9 DP 574143	ob158	196°04'20"	C		165.50 C		
IT I DP 15909	UNMK 46 DP 574143	ob152	88°05'20"	C		179.57 C		
IT III DP 574143	UNMK 62 DP 574143	ob149	265°40'20"	C		51.08 C		
IT II DP 574143	UNMK 72 DP 574143	ob147	230°36'20"	C		138.71 C		
IT II DP 574143	UNMK 85 DP 574143	ob145	211°13'40"	C		138.85 C		

Mark Name	Mark Condition	Description
IS VII DP 15909		-0.3 in field
IT I DP 15909		-0.25 in edge seal
IT II DP 574143		flush 0.8m north of fence
IT III DP 574143		flush 1.0m west of fence
IT VI DP 15909		-0.3 in field
Millers Flat		in rock
NAIL III SO 504188		in rock

\*\*\* End of Report \*\*\*

# Schedule / Memorandum

Land Registration District	Plan Number
Otago	DP 574143

<b>SCHEDULE OF PROPOSED EASEMENTS</b>			
<i>Purpose</i>	<i>Shown</i>	<i>Burdened Land (Servient Tenement)</i>	<i>Benefited Land (Dominant Tenement)</i>
Right to convey electricity	A.	Sec 35 & Part Sec 36 Blk III Benger SD (RT OT10D/534)	Part Sec's 36-38, 57 & 59-60, Parts Sec. 54-56 & 58, Secs 51-53 Block III Benger S.D.
	B.	Part Sec 36 Blk III Benger SD (RT OT10D/534)	
Right to convey water.	B.	Part Sec 36 Blk III Benger SD (RT OT10D/534)	Part Sec's 36-38, 57 & 59-60, Parts Sec. 54-56 & 58, Secs 51-53 Block III Benger S.D.
	C.	Part Sec 36 Blk III Benger SD (RT OT10D/534)	Part Sec's 36-38, 57 & 59-60, Parts Sec. 54-56 & 58, Secs 51-53 Block III Benger S.D.
	D.	Part Sec's 36-38 Blk III Benger SD (RT OT7A/357)	Part Sec's 57 & 59-60, Parts Sec. 54-56 & 58, Secs 51-53 Block III Benger S.D.
	E.	Part Sec's 56-58 Blk III Benger SD (RT OT17C/97)	Part Sec's 54-56 & 58-60, Secs 51-53 Block III Benger S.D. (RT OT3C/673)
	F.	Part Sec 56 Blk III Benger SD (RT OT3C/673)	Part Sec's 54-58 Blk III Benger SD (RT OT17C/97)

# Occupation Diagram



FB NO.

JOB NO. 2216

SURVEYOR'S PAGE

SURVEYOR

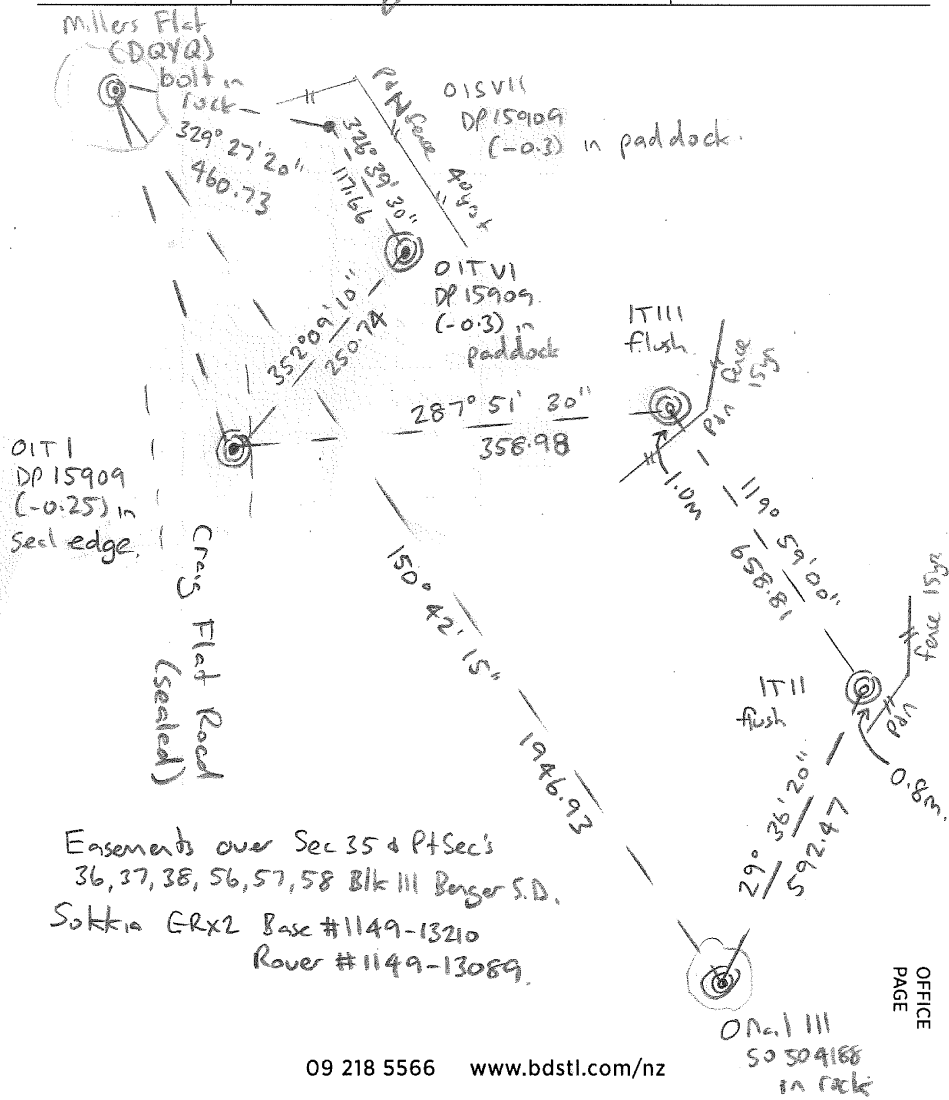
DATE

1081

*BALBY*

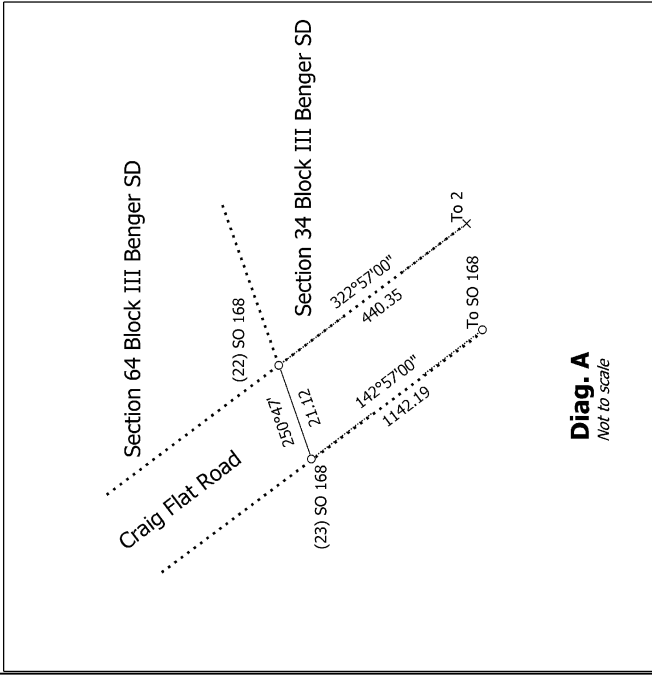
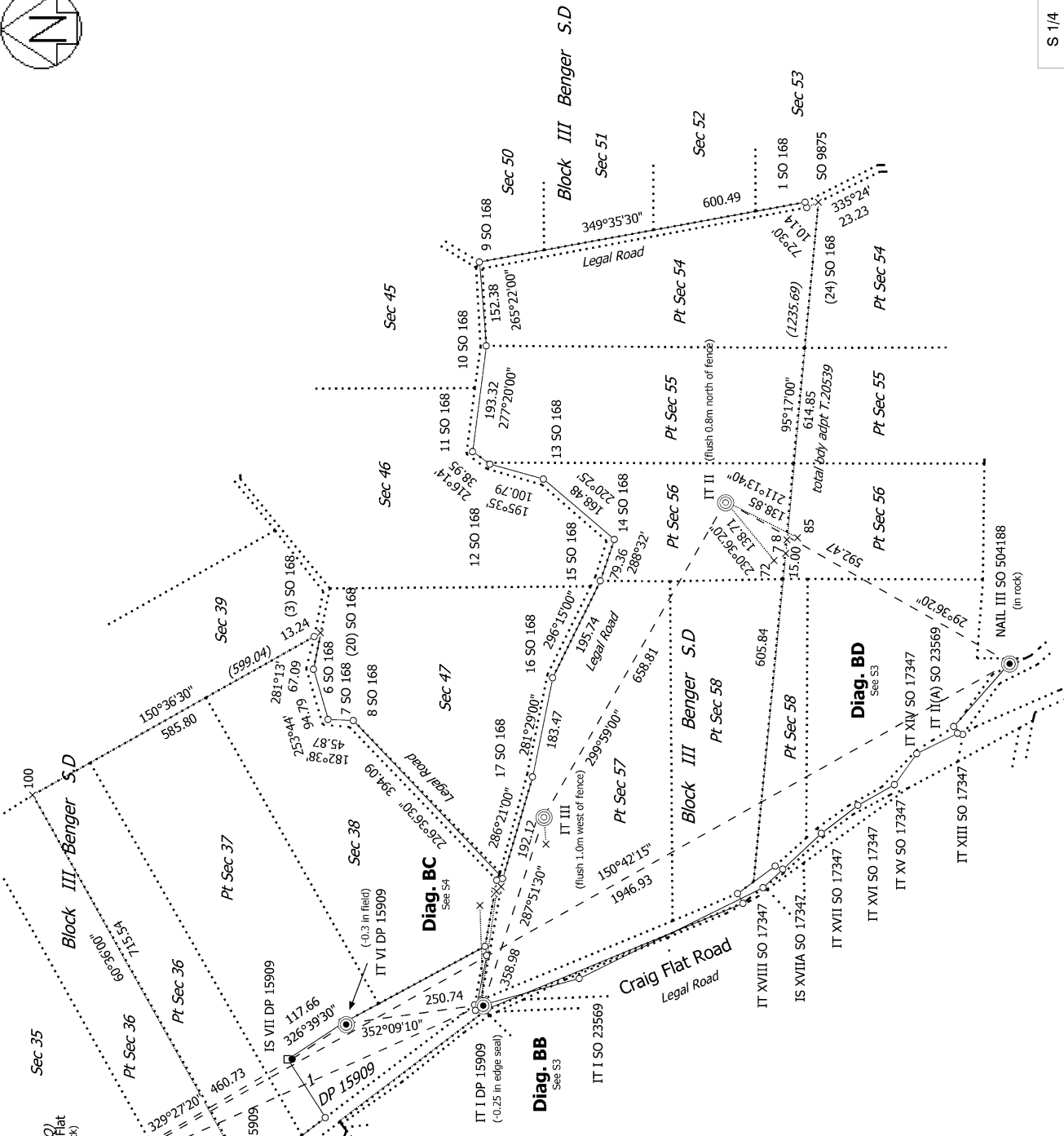
16-3-22

PLAN NO.

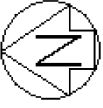




Diag A  
Sec 51



<p>Land District: Otago</p> <p><b>Digitally Generated Plan</b></p> <p>Generated on: 16/10/2023 3:13pm Page 12 of 19</p>	<p><b>EASEMENTS OVER SECTION 35 AND PARTS SECTION 36, 37, 38, 56, 57 &amp; 58 BLOCK III BENDER SURVEY DISTRICT.</b></p>	<p>Surveyor: Stuart Allan Calder</p> <p>Firm: Calder Surveying Limited</p> <p>Date of Survey: 18/03/2022</p>	<p>Record of Survey DP 574143</p> <p>Deposited on: 21/09/2023</p>
---	---	--	---



Section 35 Block III Benger SD

(DPOV)  
Millers Flat  
(in rock)

To (23) SO 168

To (22) SO 168

322°57'00"  
440.35

196°04'20"  
165.50

Part Section 36 Block III Benger SD

6.04

329°27'20"  
715.54

60°36'00"  
715.54

(611.14)  
164.75

(739.67)  
711.4

201

68.9

Part Section 36 Block III Benger SD

DP 15909

155°52'15" 814.67

460.73

142°56'00" 1142.19

322°56'00" 176.71

237°14'20" 123.96

150°42'15" 1946.93

326°39'30" 117.66

146°42'40" 119.32

358°14' 7.87

POST (2) DP 15909  
IS VII DP 15909  
(-0.3 in field)

POST (3) DP 15909  
IT VI DP 15909  
(-0.3 in field)

Lot 1 DP 15909

To IT I DP 19609

To MAIL III SO 504188

To (4) DP 15909

Section 161 Block III Benger SD

Part Section 37 Block III Benger SD

Legal Road  
Craig Flat Road

Diag. BA  
Not to Scale

S 2/4

Land District: Otago

Digitally Generated Plan

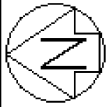
Generated on: 16/10/2023 3:13pm Page 13 of 19

EASEMENTS OVER SECTION 35 AND PARTS SECTION 36, 37, 38, 56, 57 &  
58 BLOCK III BENGERS SURVEY DISTRICT.

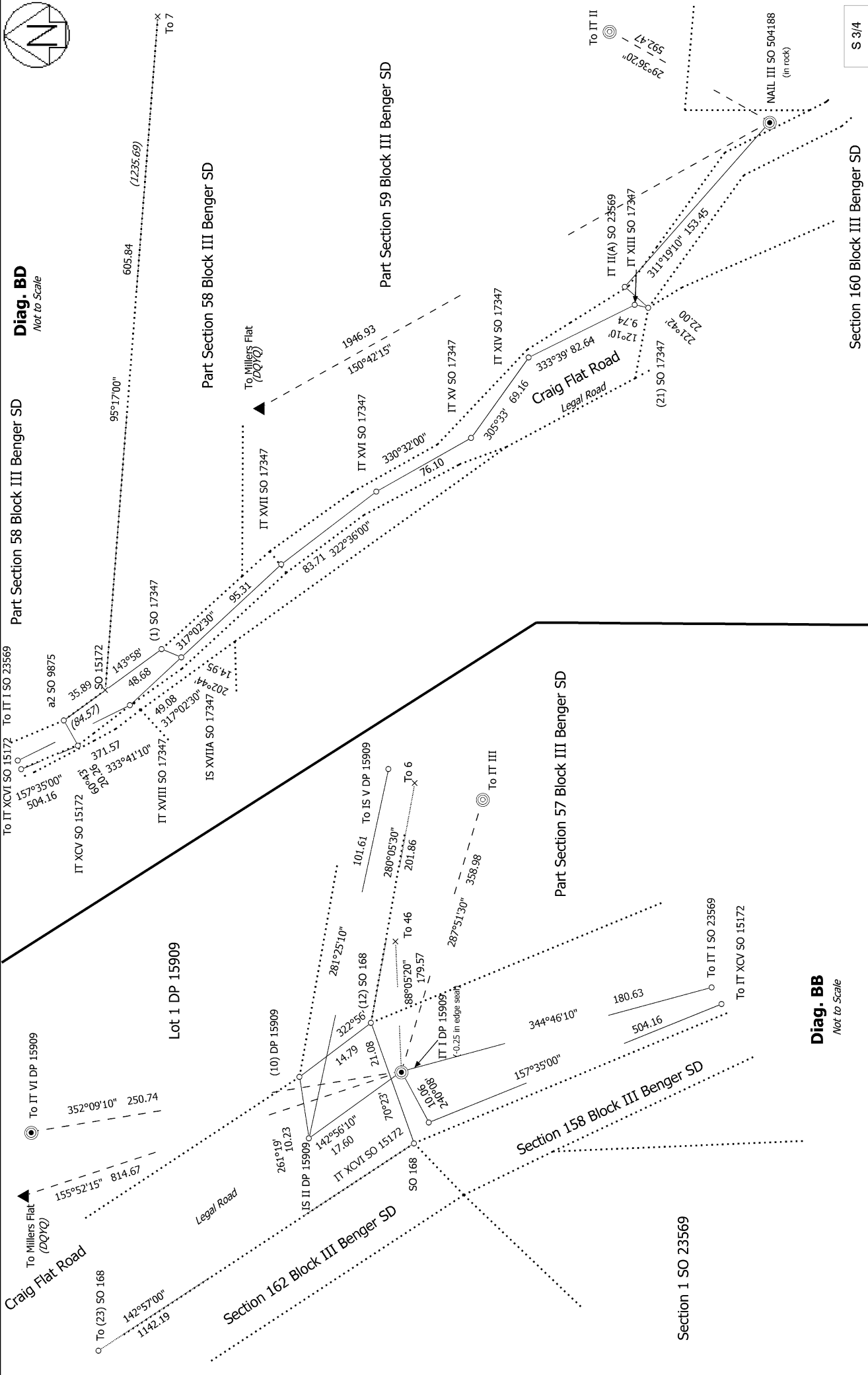
Surveyor: Stuart Allan Calder  
Firm: Calder Surveying Limited  
Date of Survey: 18/03/2022

Record of Survey  
DP 574143

Deposited on: 21/09/2023



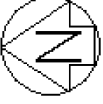
**Diag. BD**  
*Not to Scale*



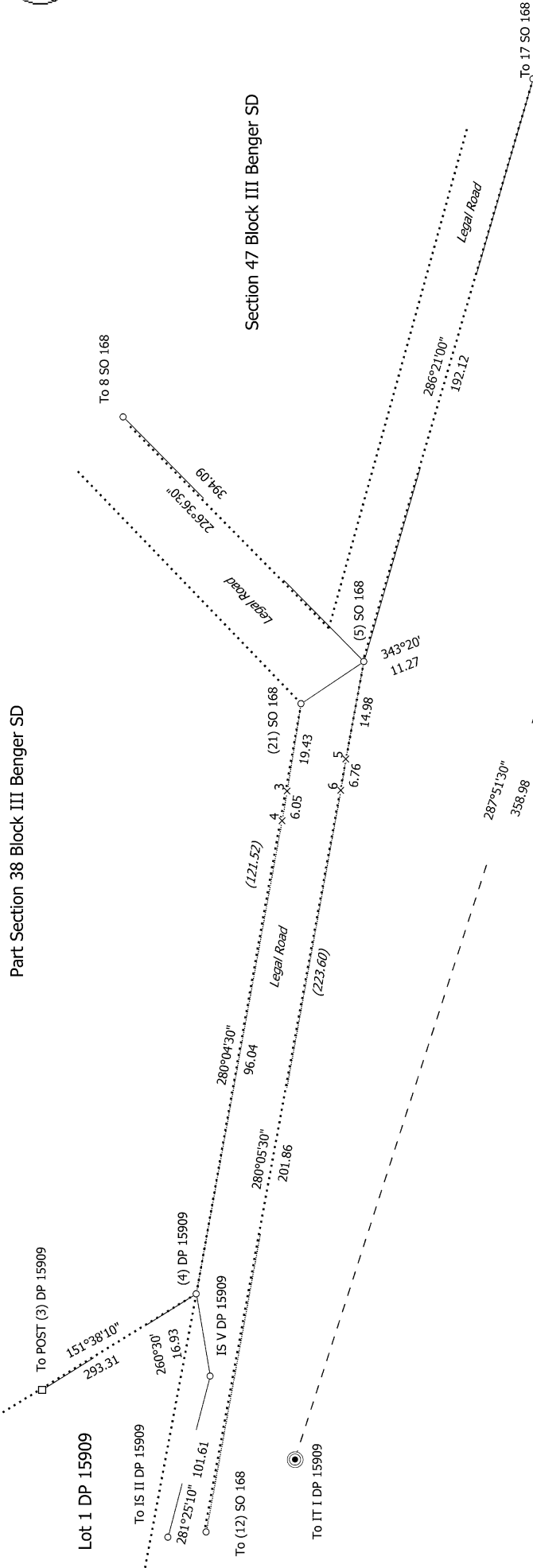
**Diag. BB**  
*Not to Scale*

S 3/4

Land District: Otago Digitally Generated Plan Generated on: 18/10/2023 3:13pm Page 14 of 19	EASEMENTS OVER SECTION 35 AND PARTS SECTION 36, 37, 38, 56, 57 & 58 BLOCK III BENER SURVEY DISTRICT.	Surveyor: Stuart Allan Calder Firm: Calder Surveying Limited Date of Survey: 18/03/2022	Record of Survey DP 574143 Deposited on: 21/09/2023
---	--	---	---



Part Section 38 Block III Bengers SD



Part Section 57 Block III Bengers SD

**Diag. BC**  
Not to Scale

S 4/4

Land District: Otago

**Digitally Generated Plan**

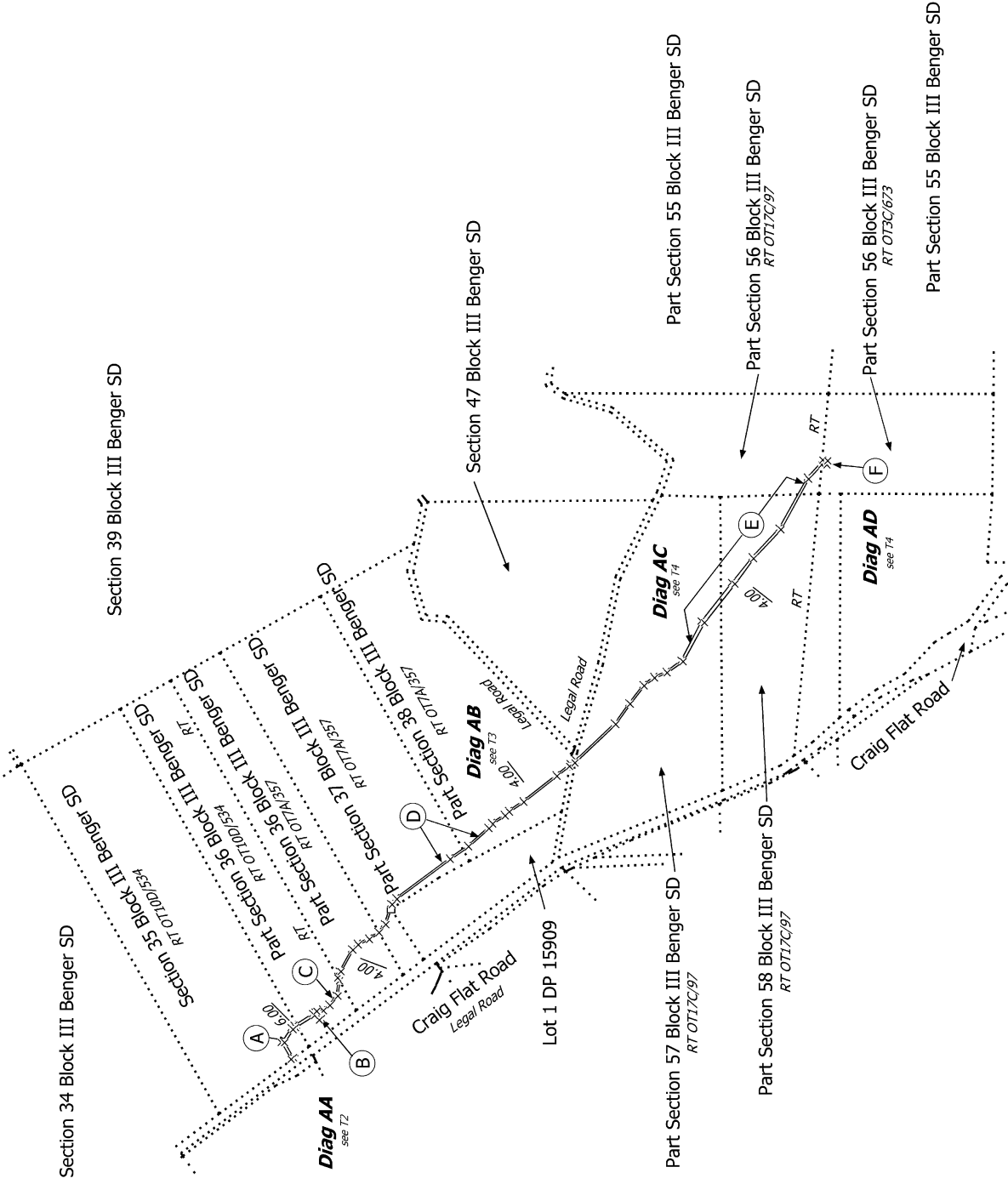
Generated on: 18/10/2023 3:13pm Page 15 of 19

**EASEMENTS OVER SECTION 35 AND PARTS SECTION 36, 37, 38, 56, 57 & 58 BLOCK III BENGERS SURVEY DISTRICT.**

Surveyor: Stuart Allan Calder  
Firm: Calder Surveying Limited  
Date of Survey: 18/03/2022

Record of Survey  
DP 574143

Deposited on: 21/09/2023



Diag. A

**Non Primary**

T 1/4

Land District: Otago

**Digitally Generated Plan**

Generated on: 16/10/2023 3:13pm Page 16 of 19

EASEMENTS OVER SECTION 35 AND PARTS SECTION 36, 37, 38, 56, 57 & 58 BLOCK III BENGER SURVEY DISTRICT.

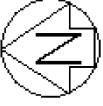
Surveyor: Stuart Allan Calder  
Firm: Calder Surveying Limited  
Date of Survey: 18/03/2022

Record of Survey  
DP 574143

Deposited on: 21/09/2023







Part Section 37 Block III Benger SD

RT 077A/357

POST (2) DP 15909

36

16.38

130°51'

55

15.12

37

143°20'40"

140.33

139.82

53

46.58

38

145°26'30"

46.40

52

56.57

39

40

12.78

51

128°17'30"

57.19

127°50'

51

12.45

42

31.56

147°27'

43

12.04

49

136°45'

12.09

48

36.66

47

44

145°50'

36.84

88.18

141°55'00"

45

88.02

47

00

47

46

141°20'

37.84

46

33.32

4

6.05

3

19.43

3 bal

5

14.98 bal

6

280°05'30"

6.76

111.89

136°33'30"

117.69

Legal Road

(121.52)

280°04'30"

96.04 bal

(223.60)

201.86 bal

RT 0717C/97

Part Section 57 Block III Benger SD

RT 0717C/97

Section 47 Block III Benger SD

Part Section 38 Block III Benger SD

RT 077A/357

Part Section 37 Block III Benger SD

RT 077A/357

Lot 1 DP 15909

Diag. AB

Non Primary

Land District: Otago

Digitally Generated Plan

Generated on: 18/10/2023 3:13pm Page 18 of 19

EASEMENTS OVER SECTION 35 AND PARTS SECTION 36, 37, 38, 56, 57 & 58 BLOCK III BENDER SURVEY DISTRICT.

Surveyor: Stuart Allan Calder

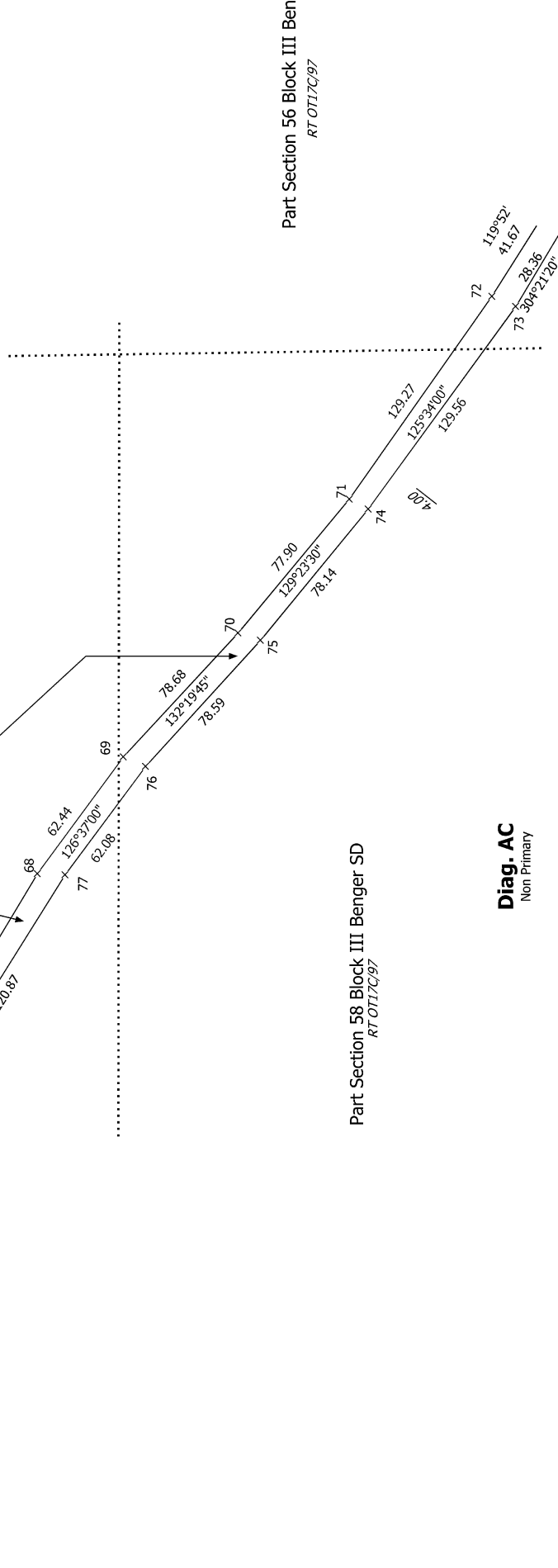
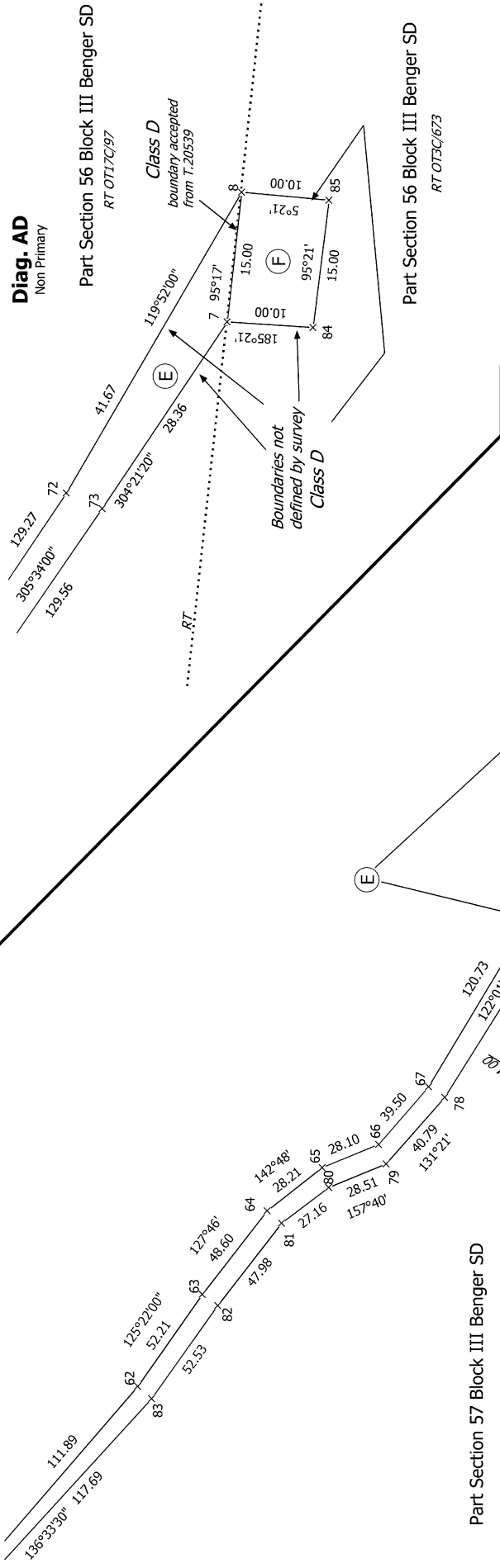
Firm: Calder Surveying Limited

Date of Survey: 18/03/2022

Record of Survey DP 574143

Deposited on: 21/09/2023

T 3/4



T 4/4

<p>Land District: Otago</p> <p><b>Digitally Generated Plan</b></p> <p>Generated on: 16/10/2023 3:13pm Page 19 of 19</p>	<p><b>EASEMENTS OVER SECTION 35 AND PARTS SECTION 36, 37, 38, 56, 57 &amp; 58 BLOCK III BENGER SURVEY DISTRICT.</b></p>	<p>Surveyor: Stuart Allan Calder</p> <p>Firm: Calder Surveying Limited</p> <p>Date of Survey: 18/03/2022</p>	<p>Record of Survey DP 574143</p> <p>Deposited on: 21/09/2023</p>
---	---	--	---