

# Record of Survey - DP 571771

---

<b>Survey Number</b>	DP 571771
<b>Surveyor Reference</b>	21N1 Moreton
<b>Surveyor</b>	Scot Robert Plunkett
<b>Survey Firm</b>	Develop Meant Ltd (Lower Hutt)
<b>Surveyor Declaration</b>	I Scot Robert Plunkett, being a licensed cadastral surveyor, certify that-- (a) this dataset provided by me and its related survey are accurate, correct and in accordance with the Cadastral Survey Act 2002 and Cadastral Survey Rules 2021; and (b) the survey was undertaken by me or under my personal direction. Declared on 12 Jul 2022 09:53 AM

---

## Survey Details

<b>Dataset Description</b>	LOTS 1 AND 2 BEING A SUBDIVISION OF SECTION 2 SO 17799, PART SECTION 132-133 AND PART SECTION 136-137 TOWNSHIP OF CARTERTON		
<b>Purpose</b>	LT Subdivision		
<b>Status</b>	Deposited	<b>Type</b>	Survey
<b>Land District</b>	Wellington	<b>Survey Class</b>	Class B
<b>Meridional Circuit</b>	Wairarapa 2000	<b>Vertical Datum</b>	None

---

## Survey Dates

<b>Surveyed Date</b>	09/12/2021	<b>Certified Date</b>	12/07/2022
<b>Submitted Date</b>	12/07/2022 09:53:07	<b>Survey Approval Date</b>	12/07/2022
<b>Deposit Date</b>	03/06/2022		

---

## Referenced Surveys

Survey Number	Land District	Bearing Correction
DP 3643	Wellington	0°00'00"
SO 17799	Wellington	0°00'00"
SO 28666	Wellington	0°00'00"
DP 80896	Wellington	0°00'00"
DP 72456	Wellington	0°00'00"
DP 64471	Wellington	0°00'00"
DP 51383	Wellington	0°00'00"
DP 23079	Wellington	0°00'00"
DP 19665	Wellington	0°00'00"
A 3000	Wellington	0°00'00"
DP 411089	Wellington	0°00'00"
DP 405021	Wellington	0°00'00"
DP 360271	Wellington	0°00'00"
DP 337457	Wellington	0°00'00"
DP 90769	Wellington	0°00'00"

---

## Territorial Authorities

Carterton District



# Record of Survey - DP 571771

---

**Comprised In**

RT WN299/157  
RT WN354/64 Ltd

---

**Created Parcels**

<b>Parcels</b>	<b>Parcel Intent</b>	<b>Area</b>	<b>RT Reference</b>
Lot 1 Deposited Plan 571771	Fee Simple Title	1.6224 Ha	1037102
Lot 2 Deposited Plan 571771	Fee Simple Title	25.0100 Ha	1037103
<b>Total Area</b>		<u>26.6324 Ha</u>	

# Mark and Vector

Survey Number DP 571771

Meridional Circuit Wairarapa 2000

From	To	Code	Bearing	Adpt Surv	Bearing Correction	Distance	Adpt Surv	Class
IT II SO 28666	IS VI DP 19665	ob0	127°43'00"	A SO 28666	0°00'00"	133.68 A	SO 28666	
IS VI DP 19665	IS I DP 19665	ob2	127°39'40"	A DP 19665	0°00'00"	443.30 A	DP 19665	
IS I DP 19665	IS II SO 17799	ob3	127°59'00"	A DP 19665	0°00'00"	521.23 A	DP 19665	
IS II SO 17799	IT I DP 64471	ob5	127°50'30"	A DP 64471	0°00'00"	176.82 A	DP 64471	
IS I DP 19665	PEG C DP 571771	ob4	355°00'00"	A DP 23079	0°00'00"	6.64 A	DP 23079	
PEG C DP 571771	IT DP 23079	ob6	231°16'20"	A DP 23079	0°00'00"	814.29 A	DP 23079	
IT DP 23079	IR I DP 337457	ob8	51°26'40"	A DP 337457	0°00'00"	81.19 A	DP 337457	
IR I DP 337457	IT II DP 90769	ob9	51°26'40"	M		343.53 M		
IT II DP 90769	IT I DP 90769	ob10	51°26'40"	M		65.95 M		
IT I DP 90769	IT III DP 90769	ob11	51°26'40"	M		161.54 M		
IT III DP 90769	IT III DP 19665	ob13	46°56'00"	A DP 90769	0°00'00"	20.42 A	DP 90769	
IT III DP 19665	IS I DP 19665	ob14	53°22'40"	A DP 19665	0°00'00"	138.10 A	DP 19665	
IT II SO 28666	IT V DP 72456	ob1	125°42'20"	A DP 72456	0°00'00"	123.02 A	DP 72456	
IT V DP 72456	PEG (1) DP 72456	ob15	106°37'00"	A DP 72456	0°00'00"	8.18 A	DP 72456	
PEG (1) DP 72456	PEG 5 DP 405021	ob19	51°18'10"	A DP 405021	0°00'00"	157.45 A	DP 405021	
PEG 5 DP 405021	PEG (2) SO 17799	ob21	51°18'10"	A DP 405021	0°00'00"	157.75 A	DP 405021	
PEG (2) SO 17799	PEG (3) DP 72456	ob22	327°48'00"	A DP 72456	0°00'00"	205.63 A	DP 72456	
PEG (3) DP 72456	IT III DP 72456	ob23	351°49'00"	A DP 72456	0°00'00"	4.95 A	DP 72456	
IT III DP 72456	IT II SO 28666	ob24	218°53'40"	A DP 72456	0°00'00"	387.89 A	DP 72456	
PEG (1) DP 72456	PEG A DP 571771	ob20	127°54'00"	C		10.34 C		
PEG A DP 571771	IP SO 17799	ob25	51°18'10"	A DP 72456	0°00'00"	311.70 C		
IP SO 17799	PEG (2) SO 17799	ob27	327°48'00"	A SO 17799	0°00'00"	10.12 A	SO 17799	
PEG C DP 571771	DISK B DP 571771	ob7	307°58'30"	C		304.32 C		Class B
DISK B DP 571771	PEG A DP 571771	ob29	307°58'30"	C		127.26 C		Class B
IR III DP 80896	PEG (3) DP 72456	ob32	27°20'00"	M		59.28 M		
IR III DP 80896	PEG (4) DP 80896	ob33	204°52'00"	M		48.88 M		
PEG (4) DP 80896	PEG (3) DP 72456	ob37	218°44'15"	A SO 17799	0°00'00"	10.64 A	SO 17799	
IP SO 17799	IP DP 3642	ob28	51°20'00"	A DP 3643	0°00'00"	10.26 A	DP 3643	Class B
IP DP 3642	IP DP 3643	ob38	147°48'00"	A SO 17799	0°00'00"	422.49 A	DP 3643	
IP DP 3643	PEG (5) DP 3643	ob40	147°48'00"	A SO 17799	0°00'00"	381.07 A	SO 17799	

# Mark and Vector

Survey Number DP 571771

Meridional Circuit Wairarapa 2000

From	To	Code	Bearing	Adpt Surv	Bearing Correction	Distance	Adpt Surv	Class
PEG (5) DP 3643	PEG (6) SO 17799	ob41	147°48'00"	A SO 17799	0°00'00"	120.66 A	SO 17799	
PEG (6) SO 17799	IS II SO 17799	ob42	147°48'00"	A SO 17799	0°00'00"	14.52 A	SO 17799	
PEG (6) SO 17799	PEG (7) SO 17799	ob43	307°58'30"	C		109.72 A	SO 17799	
PEG (7) SO 17799	PEG D DP 571771	ob44	307°58'30"	C		6.04 C		
PEG D DP 571771	PEG C DP 571771	ob45	307°58'30"	C		396.35 C		Class BD
IP DP 3642	PEG (8) DP 3643	ob39	51°20'00"	A DP 3643	0°00'00"	167.57 A	DP 3643	Class B
PEG (8) DP 3643	PEG E DP 571771	ob46	51°20'00"	A DP 3643	0°00'00"	0.50 A	DP 3643	Class B
PEG E DP 571771	POST (9) DP 3643	ob47	148°00'20"	C		624.97 A	DP 3643	Class B
POST (9) DP 3643	IP VII DP 3643	ob48	187°05'00"	A DP 3643	0°00'00"	37.22 A	DP 3643	
IP VII DP 3643	IP DP 3643	ob50	294°12'00"	A DP 3643	0°00'00"	255.00 A	DP 3643	
IP VII DP 3643	IP VIII DP 3643	ob51	212°48'30"	A DP 3643	0°00'00"	71.01 A	DP 3643	
IP VIII DP 3643	IP IX DP 3643	ob52	151°57'40"	A DP 3643	0°00'00"	62.89 A	DP 3643	
IP IX DP 3643	IP X DP 3643	ob53	211°21'00"	A DP 3643	0°00'00"	140.96 A	DP 3643	
IP X DP 3643	IP XI DP 3643	ob54	128°01'40"	A DP 3643	0°00'00"	59.51 A	DP 3643	
IP XI DP 3643	IS II SO 17799	ob55	127°50'30"	A SO 17799	0°00'00"	98.25 A	SO 17799	
IR III DP 80896	IR II DP 571771	ob34	159°02'20"	M		245.24 M		
IR II DP 571771	IT I DP 571771	ob56	51°39'50"	M		175.21 M		
IT I DP 571771	IR III DP 80896	ob62	298°07'20"	M		255.30 M		
IR III DP 80896	PEG E DP 571771	ob35	118°36'50"	M		258.55 M		
IR II DP 571771	PEG E DP 571771	ob57	52°55'50"	M		174.51 M		
IT I DP 571771	IR VI DP 571771	ob63	147°08'50"	M		670.02 M		
IR VI DP 571771	IT V DP 571771	ob64	195°52'30"	M		280.95 M		
IT V DP 571771	IS IV DP 571771	ob66	306°31'10"	M		409.89 M		
IS IV DP 571771	IT I DP 90769	ob69	232°41'50"	M		313.18 M		
IT V DP 571771	PEG D DP 571771	ob67	313°34'00"	M		20.17 M		
POST (9) DP 3643	PEG F DP 571771	ob49	148°00'20"	C		5.69 A	DP 3643	Class BD
PEG A DP 571771	DISK G DP 571771	ob26	51°18'10"	A DP 72456	0°00'00"	224.55 C		Class B
DISK G DP 571771	IP SO 17799	ob72	51°18'10"	A DP 72456	0°00'00"	87.15 C		Class B
IR II DP 571771	DISK G DP 571771	ob58	228°15'00"	M		91.17 M		
IT V DP 72456	PEG A DP 571771	ob16	118°31'00"	M		18.21 M		

# Mark and Vector

Survey Number DP 571771

Meridional Circuit Wairarapa 2000

From	To	Code	Bearing	Adpt Surv	Bearing Correction	Distance	Adpt Surv	Class
IT I DP 90769	IT III DP 571771	ob12	1°04'30" M			391.28 M		
IT III DP 571771	IR II DP 571771	ob73	27°48'30" M			315.50 M		
IT III DP 571771	IS IV DP 571771	ob74	129°48'20" M			314.70 M		
IT III DP 571771	IT V DP 72456	ob75	307°41'00" M			141.69 M		
IT III DP 571771	DISK B DP 571771	ob76	94°41'00" M			4.26 M		
IS IV DP 571771	PEG C DP 571771	ob70	9°47'00" M			14.04 M		
IR VI DP 571771	PEG F DP 571771	ob65	311°47'00" M			36.78 M		
IT V DP 571771	PEG (10) DP 64471	ob68	130°52'30" M			254.61 M		
PEG (10) DP 64471	IT I DP 64471	ob80	110°02'00" A	DP 64471	0°00'00"	33.53 A	DP 64471	
IT III DP 571771	PEG L DP 571771	ob77	44°01'00" M			42.60 M		
IT III DP 571771	DISK H DP 571771	ob78	31°11'00" M			84.25 M		
IT III DP 571771	DISK J DP 571771	ob79	27°58'00" M			108.99 M		
IR II DP 571771	DISK K DP 571771	ob60	225°14'30" M			89.65 M		
DISK B DP 571771	PEG L DP 571771	ob30	39°20'00" C			40.03 C		Class B
PEG L DP 571771	DISK H DP 571771	ob81	18°42'00" C			43.75 C		Class B
DISK H DP 571771	DISK J DP 571771	ob82	17°12'00" C			25.32 C		Class B
DISK J DP 571771	DISK K DP 571771	ob83	15°09'00" C			123.98 C		Class B
DISK K DP 571771	DISK G DP 571771	ob84	299°05'00" C			4.98 C		Class B
IR III DP 80896	IT X DP 61962	ob36	299°57'15" M			249.01 M		
IR II DP 571771	PEG 5 DP 405021	ob59	233°08'30" M			160.64 M		
IT V DP 72456	PEG 6 DP 411089	ob17	227°57'00" M			119.65 M		
IT V DP 72456	DISC 10 DP 411089	ob18	229°35'40" M			118.76 M		
IS IV DP 571771	IT DP 23079	ob71	231°55'50" M			803.80 M		
PEG 6 DP 411089	DISC 10 DP 411089	ob85	333°53'00" A	DP 411089	0°00'00"	3.55 A	DP 411089	
IT I DP 571771	PEG E DP 571771	ob61	152°27'00" M			3.92 M		

# Mark and Vector

Survey Number DP 571771

Meridional Circuit Wairarapa 2000

From	To	Code	Bearing	Adpt Surv	Bearing Correction	Distance	Adpt Surv	Class
IR III DP 80896	PEG (11) DP 80896	ob31	215°47'00" M			32.24 M		

Mark Name	Mark Condition	Description
DISK G DP 571771		Disk in post
DISK H DP 571771		Disk in Post
DISK J DP 571771		Disk in Post
DISK K DP 571771		Disk in Post
PEG C DP 571771		In position of IP A/1344

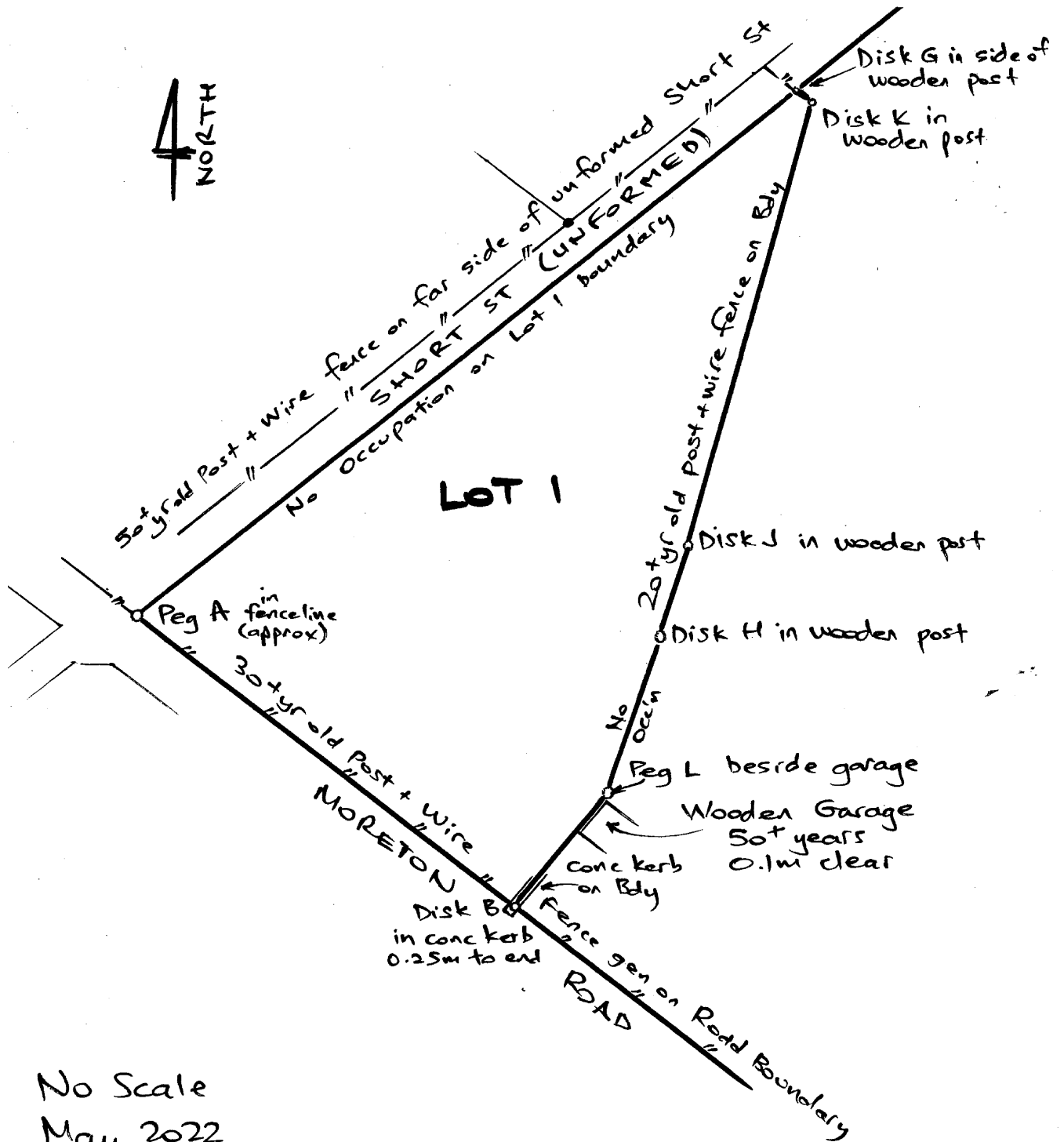
\*\*\* End of Report \*\*\*

# LOT 1 OCCUPATION DP 571771

## Develop Meant Ltd

SURVEYING - RESOURCE MANAGEMENT - LAND DEVELOPMENT

PO Box 31-030  
LOWER HUTT 5040



No Scale  
May 2022  
ZINI

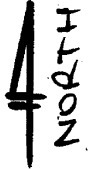
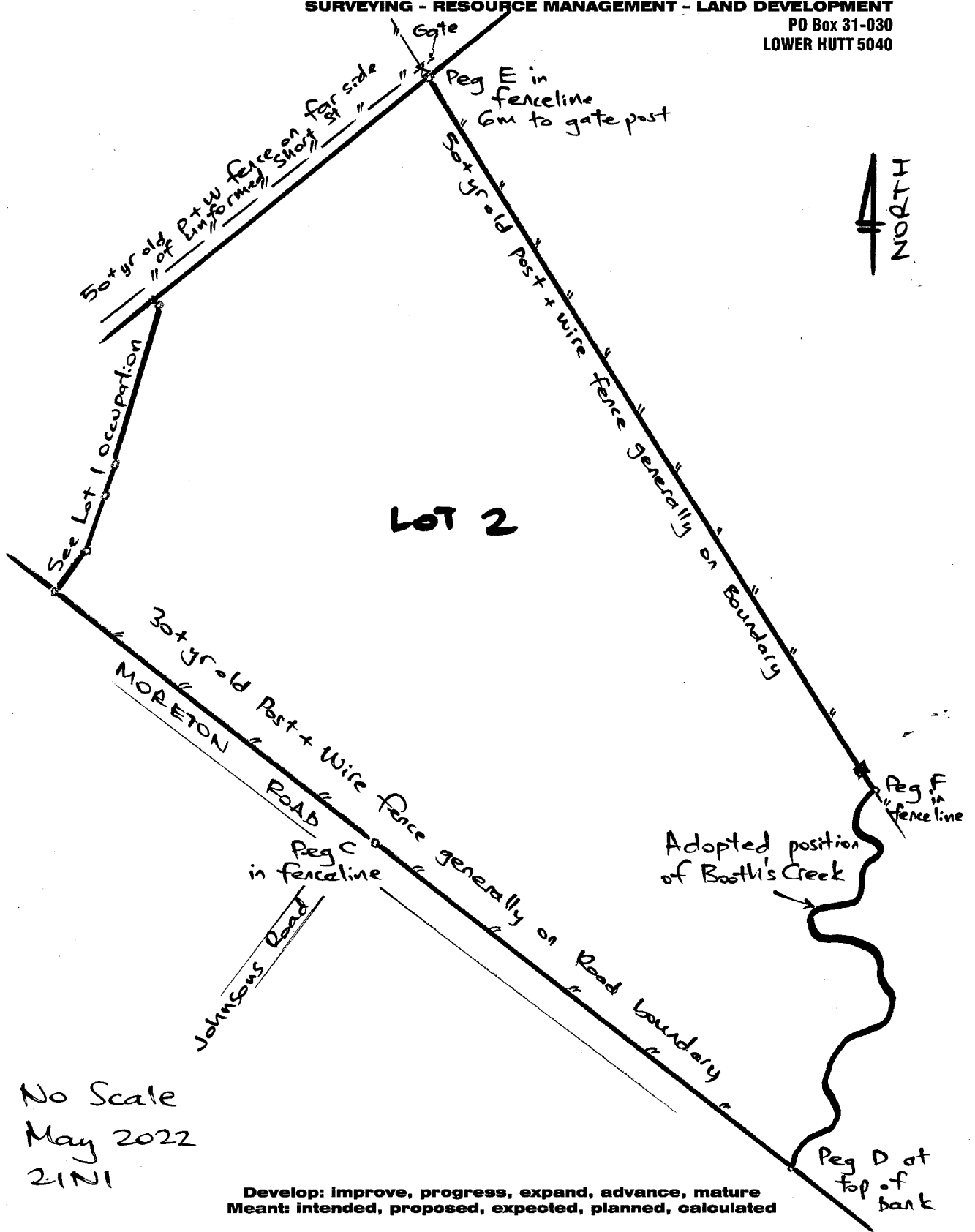
**Develop:** improve, progress, expand, advance, mature  
**Meant:** intended, proposed, expected, planned, calculated

# LOT 2 OCCUPATION DP 571771

## Develop Meant Ltd

SURVEYING - RESOURCE MANAGEMENT - LAND DEVELOPMENT

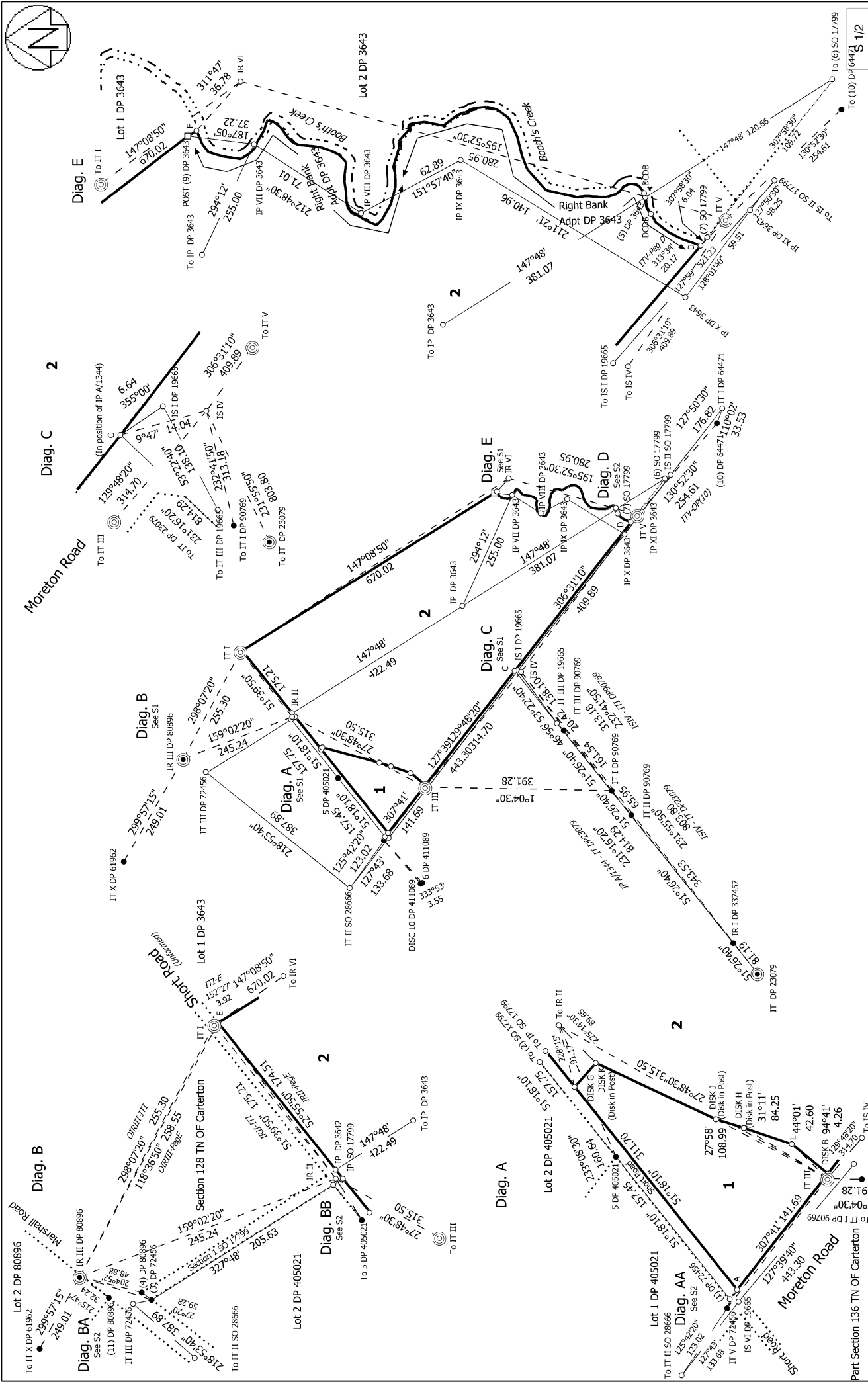
PO Box 31-030  
LOWER HUTT 5040



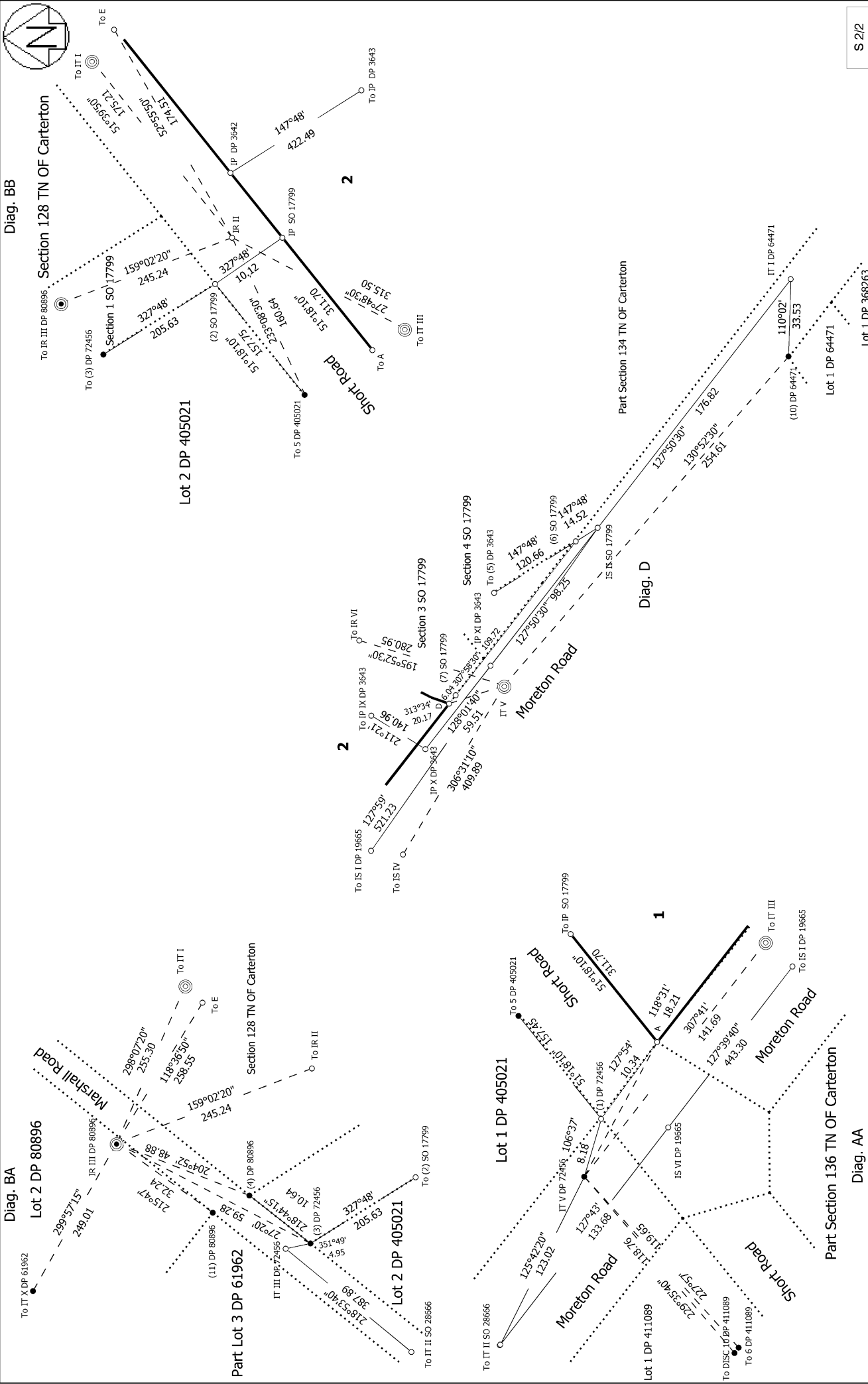
No Scale  
May 2022  
2/1/21

**Develop:** improve, progress, expand, advance, mature  
**Meant:** intended, proposed, expected, planned, calculated



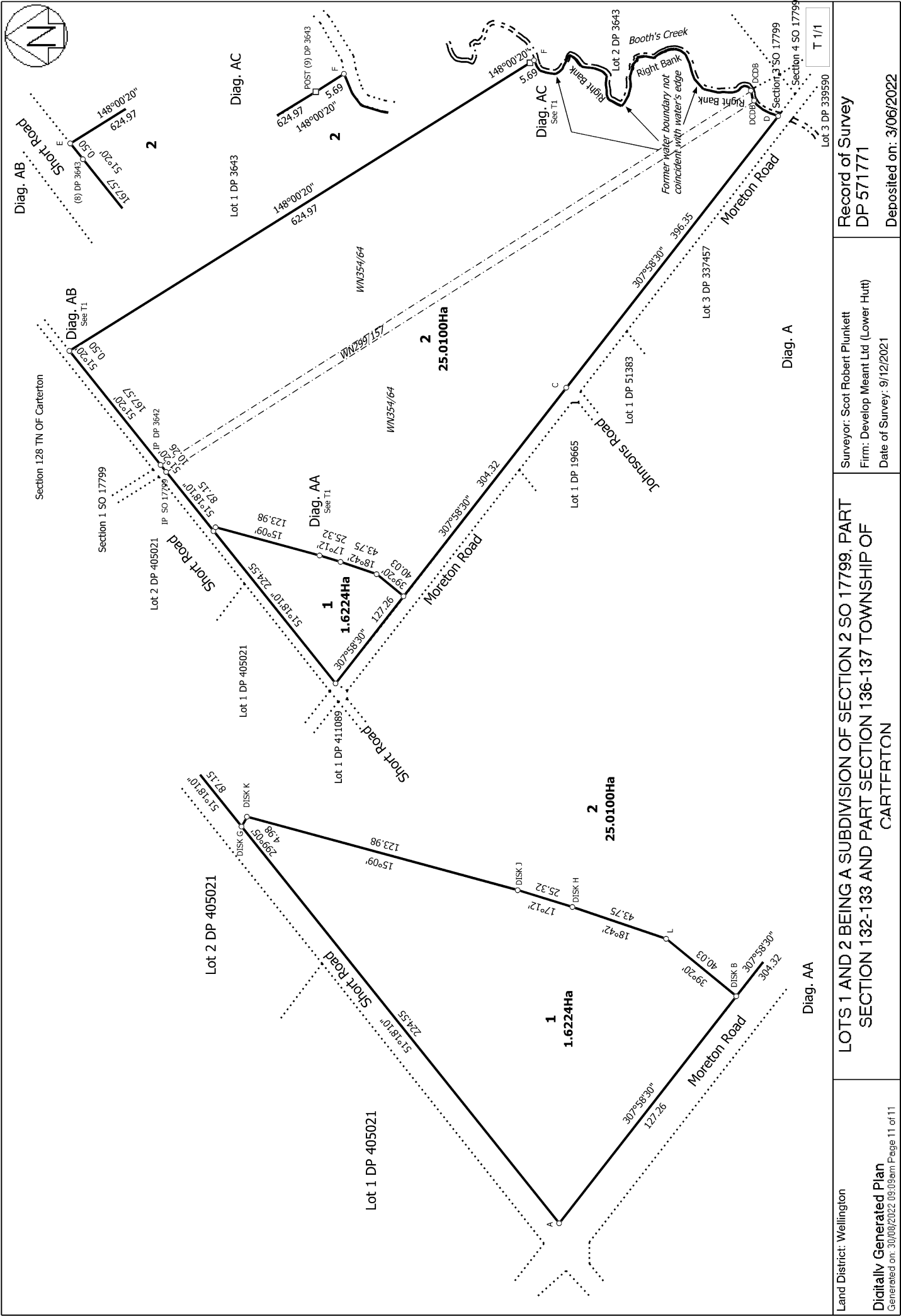


<p>Land District: Wellington</p>	<p>Surveyor: Scot Robert Plunkett Firm: Developt Meant Ltd (Lower Hutt)</p>	<p>Record of Survey DP 571771</p>
<p>Digitally Generated Plan</p>	<p>Date of Survey: 9/12/2021</p>	<p>Deposited on: 3/06/2022</p>
<p>LOTS 1 AND 2 BEING A SUBDIVISION OF SECTION 2 SO 17799, PART SECTION 132-133 AND PART SECTION 136-137 TOWNSHIP OF CARTFERTON</p>		



S 2/2

<p>Land District: Wellington</p> <p><b>Digitally Generated Plan</b></p> <p>Generated on: 30/06/2022 09:03am   Page 10 of 11</p>	<p><b>LOTS 1 AND 2 BEING A SUBDIVISION OF SECTION 2 SO 17799, PART SECTION 132-133 AND PART SECTION 136-137 TOWNSHIP OF CARTERTON</b></p> <p>Surveyor: Scot Robert Plunkett          Firm: Develop Meant Ltd (Lower Hutt)          Date of Survey: 9/12/2021</p>	<p>Record of Survey  <b>DP 571771</b></p> <p>Deposited on: 3/06/2022</p>
---	--	--



Land District: Wellington <b>Digitally Generated Plan</b> <small>Generated on: 30/06/2022 09:09am   Page 11 of 11</small>	<b>LOTS 1 AND 2 BEING A SUBDIVISION OF SECTION 2 SO 17799, PART SECTION 132-133 AND PART SECTION 136-137 TOWNSHIP OF CARTERTON</b>	Surveyor: Scot Robert Plunkett Firm: Develop Meant Ltd (Lower Hutt) Date of Survey: 9/12/2021	<b>Record of Survey</b> <b>DP 571771</b> Deposited on: 3/06/2022
---	--	---	--

T 1/1