



Record of Survey - DP 571750

Survey Number DP 571750
Surveyor Reference 1798
Surveyor Bruce William Speirs
Survey Firm Land Services Group Ltd
Surveyor Declaration I Bruce William Speirs, being a licensed cadastral surveyor, certify that--
(a) this dataset provided by me and its related survey are accurate, correct and in accordance with the Cadastral Survey Act 2002 and Cadastral Survey Rules 2021; and
(b) the survey was undertaken by me or under my personal direction.
Declared on 02 Mar 2022 11:34 AM

Survey Details

Dataset Description Lots 1 & 2 being Subdivision of Lot 53 DP 187
Purpose LT Subdivision
Status Deposited **Type** Survey
Land District Canterbury **Survey Class** Class A
Meridional Circuit Gawler 2000 **Vertical Datum** None

Survey Dates

Surveyed Date 29/11/2021 **Certified Date** 02/03/2022
Submitted Date 02/03/2022 11:34:04 **Survey Approval Date** 02/03/2022
Deposit Date 07/06/2023

Referenced Surveys

Survey Number	Land District	Bearing Correction
DP 68759	Canterbury	0°00'00"
DP 187	Canterbury	0°00'00"
DP 23242	Canterbury	0°00'10"
DP 396989	Canterbury	0°00'00"

Territorial Authorities

Ashburton District

Comprised In

RT CB474/56

Created Parcels

Parcels	Parcel Intent	Area	RT Reference
Lot 1 Deposited Plan 571750	Fee Simple Title	0.0580 Ha	1036943
Lot 2 Deposited Plan 571750	Fee Simple Title	0.0633 Ha	1036944
Area A Deposited Plan 571750	Easement		
Total Area		0.1213 Ha	

Mark and Vector

Survey Number DP 571750
Meridional Circuit Gawler 2000

From	To	Code	Bearing	Adpt Surv	Bearing Correction	Distance	Adpt Surv	Class
IT VII DP 12062	NAIL 2 DP 571750	ob0	42°47'50" M			54.09 M		
NAIL 2 DP 571750	IT 3 DP 571750	ob5	142°59'40" M			55.475 M		
IT 3 DP 571750	NAIL 1 DP 571750	ob9	189°51'10" M			65.23 M		
NAIL 1 DP 571750	IT VII DP 12062	ob19	319°25'30" M			90.68 M		
IT VII DP 12062	IT I DP 68759	ob1	48°00'40" M			133.01 M		
IT I DP 68759	IT V DP 62592	ob20	48°00'40" M			10.875 M		
IT VII DP 12062	IT 1 DP 396989	ob2	131°53'00" M			94.58 M		
NAIL 2 DP 571750	IS A DP 571750	ob6	199°01'30" M			23.43 M		
NAIL 2 DP 571750	IS B DP 571750	ob7	156°56'00" M			12.00 M		
NAIL 2 DP 571750	IS C DP 571750	ob8	139°59'00" M			11.36 M		
IT 3 DP 571750	PEG D DP 571750	ob10	126°12'00" M			16.76 M		
IT 3 DP 571750	PEG E DP 571750	ob11	181°43'00" M			22.68 M		
IT 3 DP 571750	PEG F DP 571750	ob12	248°40'00" M			16.75 M		
IT 3 DP 571750	PEG G DP 571750	ob13	264°13'00" M			10.01 M		
IT 3 DP 571750	PEG H DP 571750	ob14	286°11'00" M			15.31 M		
IT 3 DP 571750	PEG I DP 571750	ob15	322°05'00" M			13.04 M		
IT 3 DP 571750	PEG J DP 571750	ob16	327°17'00" M			13.18 M		
IT 3 DP 571750	PEG K DP 571750	ob17	323°09'00" M			23.71 M		
IT 3 DP 571750	PEG L DP 571750	ob18	320°15'00" M			23.63 M		
IT I DP 68759	PEG DP 68759	ob21	209°31'00" A	DP 68759	0°00'00"	20.29 A	DP 68759	
PEG DP 68759	PEG DP 68759	ob37	138°00'40" A	DP 68759	0°00'00"	60.31 A	DP 68759	
IT VII DP 12062	IS A DP 571750	ob3	58°55'40" A	DP 23242	0°00'10"	33.99 A	DP 23242	
IT VII DP 12062	IS VII DP 21122	ob4	137°58'00" A	DP 23242	0°00'10"	71.31 A	DP 23242	
IS VII DP 21122	IS III DP 23242	ob38	49°43'10" A	DP 23242	0°00'10"	34.70 A	DP 23242	
IS III DP 23242	PEG E DP 571750	ob39	304°22'30" A	DP 23242	0°00'10"	5.75 A	DP 23242	
IS A DP 571750	IS B DP 571750	ob22	48°00'40" C			16.60 C		Class A
IS B DP 571750	PEG L DP 571750	ob23	138°00'40" C			20.30 C		Class A

Mark and Vector

Survey Number DP 571750

Meridional Circuit Gawler 2000

From	To	Code	Bearing	Adpt Surv	Bearing Correction	Distance	Adpt Surv	Class
PEG L DP 571750	PEG K DP 571750	ob35	48°00'40"	C		1.20 C		Class A
PEG K DP 571750	PEG J DP 571750	ob34	138°00'40"	C		10.61 C		Class A
PEG J DP 571750	PEG I DP 571750	ob33	228°00'40"	C		1.20 C		Class A
PEG I DP 571750	PEG H DP 571750	ob32	228°00'40"	C		9.00 C		Class A
PEG H DP 571750	PEG G DP 571750	ob31	138°00'40"	C		7.10 C		Class A
PEG G DP 571750	PEG F DP 571750	ob30	228°00'40"	C		7.60 C		Class A
PEG F DP 571750	IS A DP 571750	ob29	318°00'40"	C		38.00 C		Class A
IS B DP 571750	IS C DP 571750	ob24	48°00'40"	C		3.50 C		Class A
IS C DP 571750	PEG DP 187	ob26	138°00'40"	C		60.31 C		Class A
PEG DP 187	PEG D DP 571750	ob41	228°00'40"	C		1.00 C		Class A
PEG D DP 571750	PEG E DP 571750	ob27	228°00'40"	C		19.10 C		Class A
PEG E DP 571750	PEG F DP 571750	ob28	318°00'40"	C		22.31 C		Class A
PEG L DP 571750	PEG I DP 571750	ob36	138°00'40"	C		10.61 C		Class A
IS C DP 571750	PEG DP 68759	ob25	48°00'40"	C		60.30 C		
PEG DP 187	PEG DP 68759	ob40	48°00'40"	C		60.30 C		

Mark Name	Mark Condition	Description
IS A DP 571750		flush in footpath
IS B DP 571750		flush in footpath
IS C DP 571750		flush in footpath
IT 1 DP 396989		flush behind kerb
IT 3 DP 571750		d 0.4 in grass
IT I DP 68759		d 0.02 in seal
IT V DP 62592		d 0.05 in seal
IT VII DP 12062		d 0.1 in seal
NAIL 1 DP 571750		flush in seal
NAIL 2 DP 571750		flush in seal

*** End of Report ***

LT 571750

LOTS 1 & 2 BEING SUBDIVISION OF LOT 53 DP 187

MEMORANDUM OF EASEMENT			
Purpose	Shown	Burdened Land (servient) (tenement)	Benefited Land (dominant) (tenement)
Right of way Right to convey water Right to convey electricity Right to convey telecommunications	A	Lot 1	Lot 2
..... Authorised Officer	 Dated	

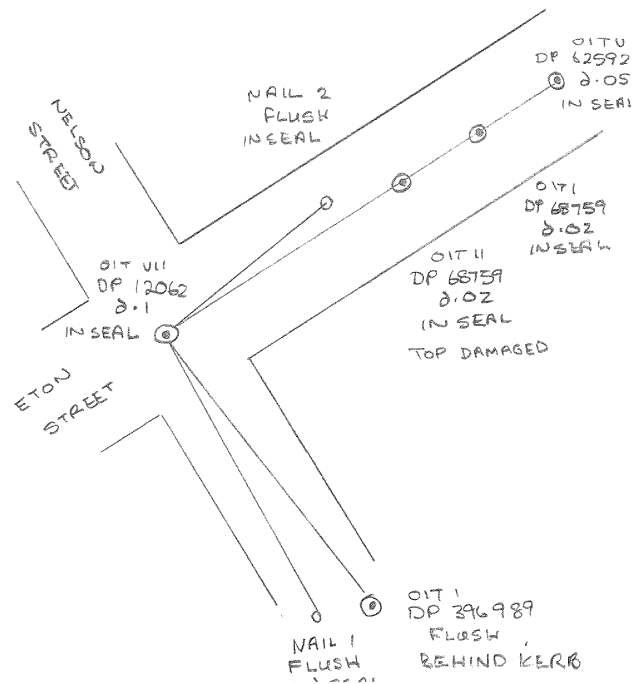
SURVEYOR'S PAGE	SURVEYOR	DATE	PLAN NO.
1 of 8	f.w. spiers	26-11-21	571750

LOTS 1 & 2 BEING SUBDIVISION
OF LOT 53 DP 187

Occupation Diagram

	WILD T2	# 155204	WILD D14	# 43476	90m	AMSL
AT OIT VII						
ON OIT V	ON OIT I	ON OIT II	ON OIT I	ON NAIL 1	ON NAIL 2	
48 00 35			131 52 41	139 25 30	42 47 40	
222 00 19	ON LINE	ON LINE	311 52 26	319 25 14	222 47 32	
00 27	TO OIT V	TO OIT V	52 33	25 22	47 36	
+ 13			+ 13	+ 13	+ 13	
48 00 40			131 52 46	139 25 25	42 47 49	
37 15 07			121 07 16	128 40 03	32 02 14	
217 15 02			301 07 09	308 39 55	212 02 09	
15 05			07 12	09 59	02 11	
10 45 35			+10 45 35	+10 45 35	+10 45 35	
48 00 40			131 52 47	139 25 34	42 47 46	
48 00 40	48 00 40	48 00 40	131 52 50	139 25 30	42 47 50	
OIT VII	143.891	270° 24'	143.886	-0.002	143.885	
- OIT V	.889 .890					
OIT VII	133.015	270° 24'	133.014	-0.002	133.010	
- OIT I	.017 .019					
OIT VII	115.149	270° 22'	115.147	-0.002	115.145	
- OIT II	.154 .145					
OIT VII	94.586	269° 26'	94.581	-0.001	94.580	
- OIT I	.586 .586					
OIT VII	90.684	269° 26'	90.679	-0.001	90.680	
- NAIL 1	.685 .687					
OIT VII	54.092	270° 25'	54.090	-0.001	54.090	
- NAIL 2	.090 .090					

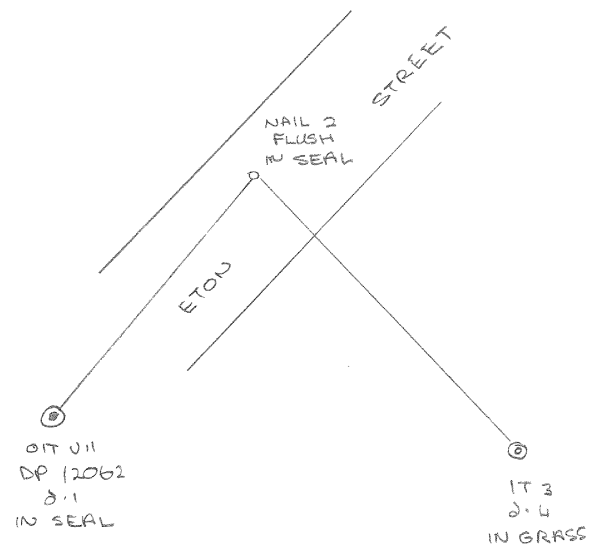
SURVEYOR'S PAGE	SURVEYOR	DATE	PLAN NO.
2 of 8	BWS Speirs	26-11-21	



Occupation Diagram

AT NAIL 2					
ON OIT VII	ON IT 3				
222 47 46	142 59 38				
42 47 34	322 59 31				
47 40	59 34				
+ 08	+ 08				
222 47 48	142 59 42				
213 26 17	133 38 06				
33 26 08	313 38 00				
26 12	38 03				
+ 9 21 36	+ 9 21 36				
222 47 48	142 59 39				
222 47 50	142 59 40				
NAIL 2	55.478	269° 22'	55.476	-0.001	55.475
-IT 3	.479 .480				

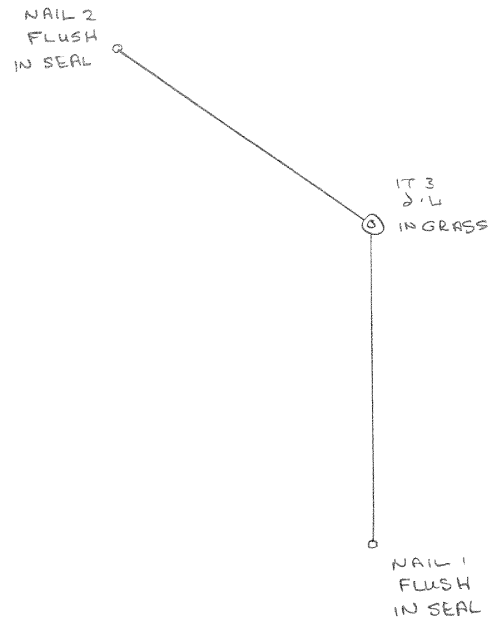
SURVEYOR'S PAGE	SURVEYOR	DATE	PLAN NO.
3 OF 8	B W Speirs	26-11-21	



Occupation Diagram

AT IT 3					
ON NAIL 2	ON NAIL 1				
322 51 47	189 43 21				
142 51 38	9 43 09				
51 42	43 15				
+7 59	+7 59				
322 59 41	189 51 14				
314 19 22	181 10 57				
134 19 13	1 10 43				
19 17	10 50				
48 40 24	+8 40 24				
322 59 41	189 51 14				
322 59 40	189 51 10				
IT 3	65.228	270° 04'	65.229	-0.001	65.230
-NAIL 1	.229 .230				

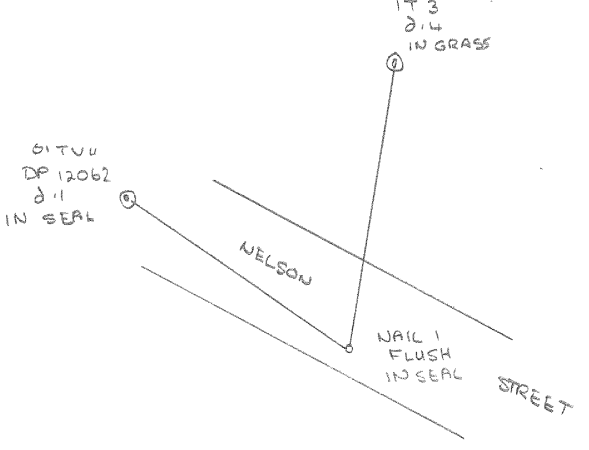
SURVEYOR'S PAGE	SURVEYOR	DATE	PLAN NO.
4 OF 8	B.W. Speirs	26-11-21	



Occupation Diagram

AT NAIL						
ON IT 3	ON OIT VII					
9 51 20	319 25 37					
189 51 03	139 25 13					
51 11	25 20					
+ 03	+ 03					
9 51 14	319 25 28					
355 09 57	304 44 12					
175 09 27	124 43 54					
09 47	44 03					
+ 14 41 27	+ 14 41 27					
9 51 14	319 25 30					
9 51 10	319 25 30					

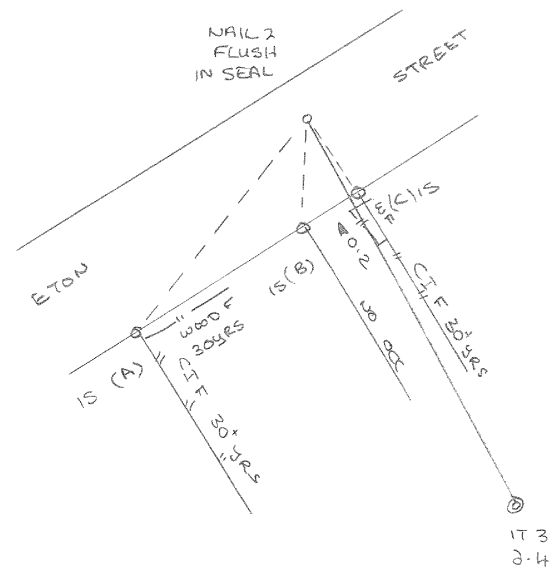
SURVEYOR'S PAGE	SURVEYOR	DATE	PLAN NO.
5 OF 8	BW Spies	26-11-21	



Occupation Diagram

AT NAIL 2	ON IT 3	ON IS (A)	ON IS (B)	ON IS (C)		
142 59 45	199 01 30	156 56	139 59			
140 00	196 02 30	153 57	136 58			
+ 2 59 40	+ 2 59	+ 2 59	+ 3 01			
142 59 40	199 01 30	156 56	139 59			
NAIL 2	23.68	269° 16'	23.68	- 0.25	23.43	
- IS (A)	23.43	269° 16'	/			
NAIL 2	11.936	269° 12'	11.94	+ 0.06	12.00	
- IS (B)	12.00	269° 12'	/			
NAIL 2	11.37	269° 14'	11.37	- 0.01	11.36	
- IS (C)	11.36	269° 14'	/			

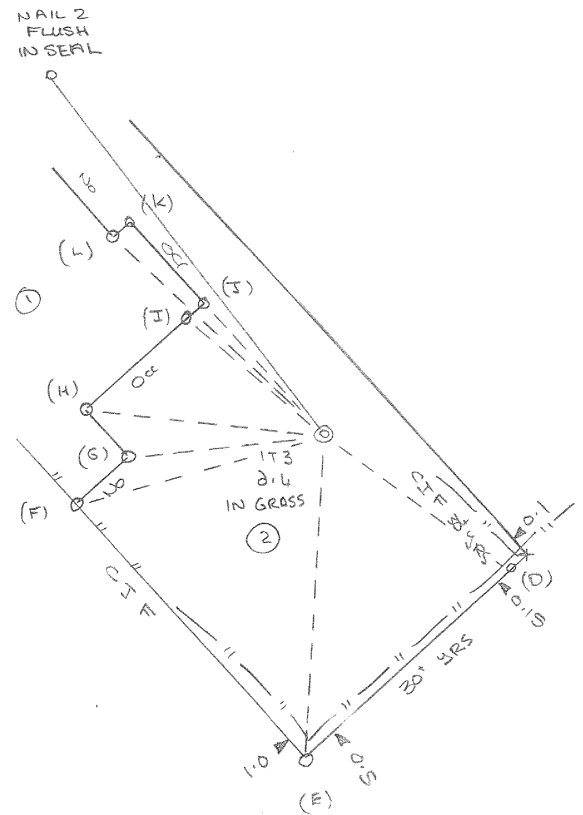
SURVEYOR'S PAGE	SURVEYOR	DATE	PLAN NO.
6 OF 8	RUSSELL	26-11-21	



Occupation Diagram

AT IT 3	ON NAIL 2	ON PEG (D)	ON PEG (E)	ON PEG (F)	ON PEG (G)	ON PEG (H)
322 59 40	126 12	181 43	248 40	264 13	286 11	
320 00	123 12	178 43	245 40	261 14	283 12	
+1 59 40	+3 00	+3 00	+3 00	+2 59	+2 59	
322 59 40	126 12	181 43	248 40	264 13	286 11	
IT 3	16.677	270° 30'	16.67	+0.09	16.76	
- PEG (D)	16.762	270° 30'	✓			
IT 3	22.355	270° 30'	22.35	+0.33	22.68	
- PEG (E)	22.68	270° 44'	✓			
IT 3	16.713	270° 52'	16.71	+0.04	16.75	
- PEG (F)	16.646	270° 45'	+0.12	✓		
IT 3	10.06	269° 28'	10.06	-0.05	10.01	
- PEG (G)	10.02	270° 10'	✓			
IT 3	15.56	269° 46'	15.56	+0.25	15.31	
- PEG (H)	15.32	270° 21'	✓			

SURVEYOR'S PAGE	SURVEYOR	DATE	PLAN NO.
7 OF 8	BWSpeirs	26-11-21	

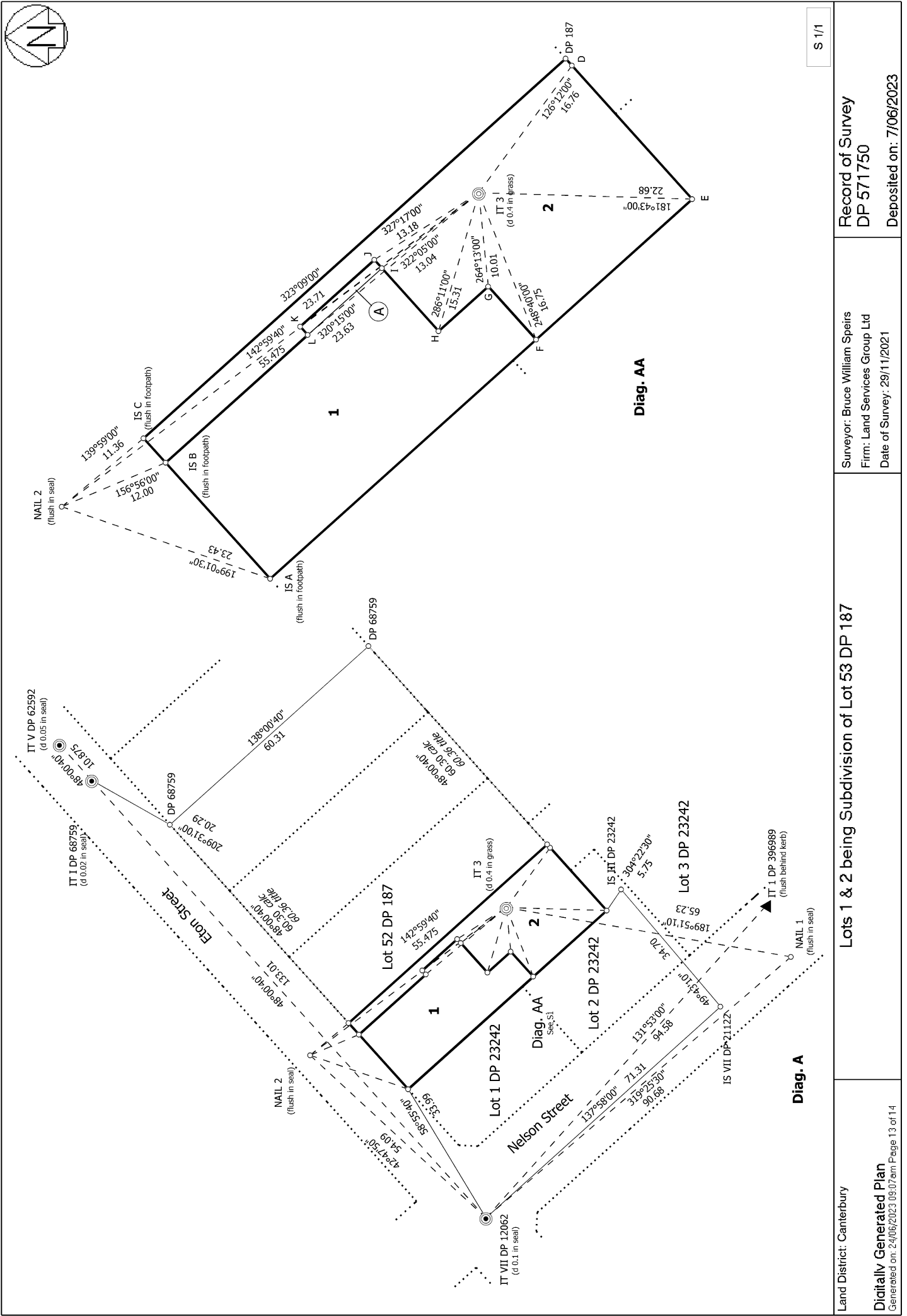
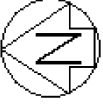


Occupation Diagram

AT IT3	ON NAIL 2	ON PEG (I)	ON PEG (J)	ON PEG (K)	ON PEG (L)
	322 59 40	322 05	327 17	323 09	320 15
	320 00	319 06	324 18	320 10	317 15
	+2 59 40	+2 59	+2 59	+2 59	+3 00
	322 59 40	322 05	327 17	323 09	320 15
IT3	12.906	269° 51'	12.90	+0.14	13.04
- PEG (I)	13.04	270° 31'			
IT3	13.08	269° 51'	13.08	+0.10	13.18
- PEG (J)	13.175	270° 35'			
IT3	23.86	270° 18'	23.86	-0.15	23.71
- PEG (K)	23.715	270° 40'			
IT3	23.66	270° 24'	23.66	-0.03	23.63
- PEG (L)	23.63	270° 38'			

SURVEYOR'S PAGE	SURVEYOR	DATE	PLAN NO.
8 OF 8	BWSpeirs	29-11-21	

SEE PAGE 7

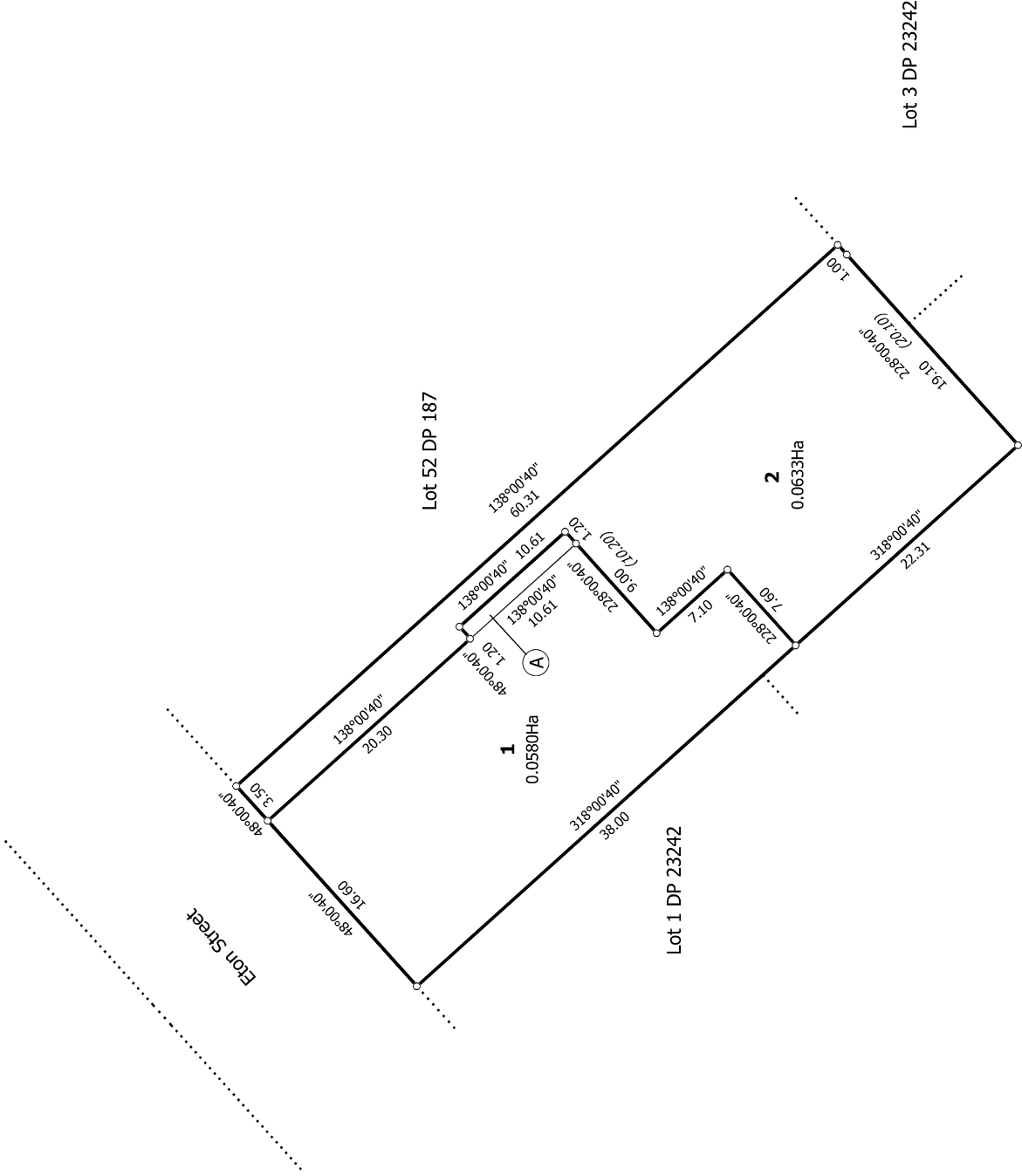
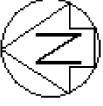


S 1/1

Lots 1 & 2 being Subdivision of Lot 53 DP 187

Surveyor: Bruce William Speirs
 Firm: Land Services Group Ltd
 Date of Survey: 29/11/2021

Record of Survey
 DP 571750
 Deposited on: 7/06/2023



Diag. A

T 1/1

Land District: Canterbury

Digitally Generated Plan
Generated on: 24/06/2023 09:07:am Page 14 of 14

Lots 1 & 2 being Subdivision of Lot 53 DP 187

Surveyor: Bruce William Speirs
Firm: Land Services Group Ltd
Date of Survey: 29/11/2021

Record of Survey
DP 571750

Deposited on: 7/06/2023