



Record of Survey - DP 569497

Survey Number DP 569497
Surveyor Reference Vethaak
Surveyor Michael Philip Proude
Survey Firm Foresight Surveying Limited
Surveyor Declaration I Michael Philip Proude, being a licensed cadastral surveyor, certify that--
(a) this dataset provided by me and its related survey are accurate, correct and in accordance with the Cadastral Survey Act 2002 and Cadastral Survey Rules 2021; and
(b) the survey was undertaken by me or under my personal direction.
Declared on 02 Feb 2023 04:59 PM

Survey Details

Dataset Description Lots 1 - 5 Being a Subdivision of Part Retaruke 4C and Lot 2 DP 316976
Purpose LT Subdivision
Status Deposited
Land District Wellington
Meridional Circuit Tuhirangi 2000

Type	Survey
Survey Class	Class B
Vertical Datum	None

Survey Dates

Surveyed Date	31/08/2022	Certified Date	02/02/2023
Submitted Date	02/02/2023 16:59:55	Survey Approval Date	07/02/2023
Deposit Date	11/10/2023		

Referenced Surveys

Survey Number	Land District	Bearing Correction
SO 25271	Wellington	0°00'00"
SO 453134	Wellington	0°00'00"
DP 571269	Wellington	0°00'00"
DP 305886	Wellington	0°00'00"
ML 2392	Wellington	0°00'00"
SO 15573	Wellington	0°00'00"
SO 15568	Wellington	0°00'00"
DP 316976	Wellington	0°00'00"
DP 57839	Wellington	0°00'00"
SO 15055	Wellington	0°00'00"
SO 37858	Wellington	0°00'00"
SO 24903	Wellington	0°00'00"
SO 19746	Wellington	0°00'00"
DP 553947	Wellington	0°00'00"

Territorial Authorities

Ruapehu District

Comprised In

RT 66716



Record of Survey - DP 569497

Comprised In

RT WN754/6

Created Parcels

Parcels	Parcel Intent	Area	RT Reference
Lot 2 Deposited Plan 569497	Fee Simple Title	224.4865 Ha	1097913
Lot 3 Deposited Plan 569497	Fee Simple Title	13.9190 Ha	1097914
	Road	0.1242 Ha	
	Road	0.3717 Ha	
Area A Deposited Plan 569497	Easement		
Area B Deposited Plan 569497	Easement		
Area C Deposited Plan 569497	Easement		
Area D Deposited Plan 569497	Easement		
Area E Deposited Plan 569497	Easement		
Lot 1 Deposited Plan 569497	Fee Simple Title	111.5700 Ha	1097912
Total Area		<u>350.4714 Ha</u>	

Mark and Vector

Survey Number DP 569497

Meridional Circuit Tuhirangi 2000

From	To	Code	Bearing	Adpt Surv	Bearing Correction	Distance	Adpt Surv	Class
BP 1 SO 453134	IT II DP 57839	ob0	117°46'50" M			1,166.94 M		
IT II DP 57839	IT IX DP 57839	ob5	294°11'50" M			2,255.81 M		
IT V DP 569497	BP 1 SO 453134	ob17	134°19'40" M			629.57 M		
IT IIA SO 37858	IT XVA SO 37858	ob8	159°23'30" M			742.01 M		
IT XVA SO 37858	IT XIVA SO 37858	ob23	135°18'20" M			589.96 M		
IT XIVA SO 37858	IT V DP 569497	ob27	117°08'30" M			299.93 M		
IT IX DP 57839	IB SO 25271	ob6	110°30'40" M			1,066.75 M		
IB SO 25271	BP 1 SO 453134	ob37	104°58'20" M			27.10 M		
IB SO 25271	IT XIX DP 569497	ob38	305°02'00" M			192.06 M		
IT XIX DP 569497	IT V DP 569497	ob43	320°24'10" M			418.79 M		
BP 1 SO 453134	IT IV DP 316976	ob1	8°13'50" M			212.32 M		
IT IV DP 316976	IT III DP 305886	ob45	129°07'50" M			915.23 M		
IT III DP 305886	IT II DP 57839	ob47	121°08'00" M			341.21 M		
IB SO 25271	IT II DP 316976	ob39	32°29'30" M			85.35 M		
IT II DP 316976	IT IV DP 316976	ob48	4°40'40" M			131.61 M		
BP 1 SO 453134	IT I DP 316976	ob2	336°26'10" M			87.94 M		
IT I DP 316976	IB SO 25271	ob49	173°02'40" M			74.15 M		
IT I DP 316976	IT III DP 316976	ob50	6°06'20" A	DP 316976	0°00'00"	71.12 A	DP 316976	
IT III DP 316976	IT IV DP 316976	ob51	44°35'20" A	DP 316976	0°00'00"	82.62 A	DP 316976	
IT IV DP 316976	PEG 12 DP 316976	ob46	120°31'20" M			65.81 M		
IT XIVA SO 37858	IT VI DP 569497	ob28	343°51'10" M			262.57 M		
IT VI DP 569497	IT XVA SO 37858	ob53	296°03'20" M			380.60 M		
IT IX DP 57839	IT XIVA SO 37858	ob7	57°31'40" M			365.12 M		
IT V DP 569497	IT IV DP 316976	ob18	115°32'40" M			532.85 M		
BP 1 SO 453134	J (Kaitieke SD)	ob3	14°42'50" M			1,484.05 M		
J (Kaitieke SD)	IT I DP 569497	ob85	277°17'10" M			88.74 M		
IT I DP 569497	IT II DP 569497	ob90	197°22'30" M			187.37 M		
IT II DP 569497	IT III DP 569497	ob98	180°32'20" M			246.43 M		
IT III DP 569497	IT IV DP 569497	ob106	216°28'20" M			342.49 M		
IT IV DP 569497	IT V DP 569497	ob112	237°20'00" M			567.12 M		
PEG 12 DP 316976	PEG VII SO 15573	ob52	33°43'00" A	SO 15573	0°00'00"	1,206.18 A	DP 316976	Class C
PEG VII SO 15573	J (Kaitieke SD)	ob65	303°43'00" A	SO 15573	0°00'00"	457.19 A	SO 15573	Class C

Mark and Vector

Survey Number DP 569497

Meridional Circuit Tuhirangi 2000

From	To	Code	Bearing	Adpt Surv	Bearing Correction	Distance	Adpt Surv	Class
J (Kaitieke SD)	TRIG JUNCTION SO 15573	ob86	302°20'26"	A SO 15573	0°00'00"	334.26 A	SO 15573	Class C
TRIG JUNCTION SO 15573	UPOKOERA	ob66	211°12'55"	A SO 15573	0°00'00"	789.54 A	SO 15573	
IT IIA SO 37858	IT IA SO 37858	ob9	205°48'50"	A SO 37858	0°00'00"	421.85 A	SO 37858	
IT IA SO 37858	IT XVA SO 37858	ob72	125°16'50"	A SO 37858	0°00'00"	544.93 A	SO 37858	
IT IA SO 37858	IT DXXV SO 37858	ob73	19°24'55"	A SO 37858	0°00'00"	564.23 A	SO 37858	
IT DXXV SO 37858	IT DXXIV SO 37858	ob75	58°18'50"	A SO 37858	0°00'00"	441.74 A	SO 37858	
IT DXXIV SO 37858	IT DXXIII SO 37858	ob80	37°48'40"	A SO 37858	0°00'00"	717.53 A	SO 37858	
IT DXXIII SO 37858	IT DXXII SO 37858	ob81	19°27'20"	A SO 37858	0°00'00"	745.62 A	SO 37858	
IT DXXII SO 37858	IT DXXX SO 37858	ob82	10°50'00"	A SO 37858	0°00'00"	132.24 A	SO 37858	
IT DXXX SO 37858	IS I SO 24903	ob83	215°20'50"	A SO 37858	0°00'00"	158.50 A	SO 37858	
IS I SO 24903	PEG I ML 3510	ob84	33°47'10"	A SO 24903	0°00'00"	1.95 A	SO 24903	
PEG I ML 3510	IS XX SO 19746	ob340	17°17'00"	A SO 19746	0°00'00"	102.50 A	SO 19746	
J (Kaitieke SD)	IT V DP 569497	ob87	219°43'40"	M		1,294.39 M		
J (Kaitieke SD)	POST 1 DP 569497	ob88	294°06'00"	M		11.40 M		Class B
J (Kaitieke SD)	POST 2 DP 569497	ob89	292°26'00"	M		37.91 M		
POST 2 DP 569497	POST 1 DP 569497	ob128	111°43'00"	C		26.51 C		Class B
IT I DP 569497	POST 3 DP 569497	ob91	71°20'00"	M		24.20 M		
IT I DP 569497	POST 4 DP 569497	ob92	58°40'00"	M		1.33 M		
IT I DP 569497	POST 5 DP 569497	ob93	124°59'00"	M		1.10 M		
IT I DP 569497	POST 6 DP 569497	ob94	184°18'30"	M		58.17 M		
IT I DP 569497	POST 7 DP 569497	ob95	194°46'30"	M		79.24 M		
IT I DP 569497	POST 8 DP 569497	ob96	197°57'00"	M		87.86 M		
IT I DP 569497	POST 9 DP 569497	ob97	196°15'30"	M		89.73 M		
POST 3 DP 569497	POST 2 DP 569497	ob129	98°34'00"	C		30.39 C		Class B
POST 4 DP 569497	POST 3 DP 569497	ob130	72°04'00"	C		22.90 C		Class B

Mark and Vector

Survey Number DP 569497

Meridional Circuit Tuhirangi 2000

From	To	Code	Bearing	Adpt Surv	Bearing Correction	Distance	Adpt Surv	Class
POST 5 DP 569497	POST 4 DP 569497	ob131	10°04'00"	C		1.35 C		Class B
POST 6 DP 569497	POST 5 DP 569497	ob132	5°15'00"	C		57.61 C		Class B
POST 7 DP 569497	POST 6 DP 569497	ob133	40°24'00"	C		24.45 C		Class B
POST 8 DP 569497	POST 7 DP 569497	ob134	44°37'00"	C		9.78 C		Class B
POST 8 DP 569497	POST 9 DP 569497	ob135	142°29'00"	C		3.22 C		Class B
IT II DP 569497	POST 10 DP 569497	ob99	14°04'30"	M		64.81 M		
IT II DP 569497	POST 11 DP 569497	ob100	32°56'00"	M		15.58 M		
IT II DP 569497	POST 12 DP 569497	ob101	255°48'00"	M		1.15 M		
IT II DP 569497	POST 13 DP 569497	ob102	166°57'00"	M		25.72 M		
IT II DP 569497	POST 14 DP 569497	ob103	161°08'30"	M		64.29 M		
IT II DP 569497	POST 15 DP 569497	ob104	167°16'00"	M		94.01 M		
IT II DP 569497	POST 16 DP 569497	ob105	174°52'00"	M		123.72 M		
POST 10 DP 569497	POST 9 DP 569497	ob136	26°50'00"	C		33.42 C		Class B
POST 11 DP 569497	POST 10 DP 569497	ob137	8°20'00"	C		50.32 C		Class B
POST 12 DP 569497	POST 11 DP 569497	ob138	35°40'00"	C		16.44 C		Class B
POST 12 DP 569497	POST 13 DP 569497	ob139	164°23'00"	C		25.73 C		Class B
POST 13 DP 569497	POST 14 DP 569497	ob140	157°18'00"	C		38.78 C		Class B
POST 15 DP 569497	POST 14 DP 569497	ob141	0°06'00"	C		30.86 C		Class B
POST 16 DP 569497	POST 15 DP 569497	ob142	17°01'00"	C		32.97 C		Class B
IT III DP 569497	POST 17 DP 569497	ob107	4°16'00"	M		97.31 M		
IT III DP 569497	POST 18 DP 569497	ob108	359°05'00"	M		53.03 M		
IT III DP 569497	POST 19 DP 569497	ob109	9°56'00"	M		29.51 M		
IT III DP 569497	POST 20 DP 569497	ob110	253°15'00"	M		1.26 M		
IT III DP 569497	POST 21 DP 569497	ob111	237°23'00"	M		21.31 M		

Mark and Vector

Survey Number DP 569497

Meridional Circuit Tuhirangi 2000

From	To	Code	Bearing	Adpt Surv	Bearing Correction	Distance	Adpt Surv	Class
POST 17 DP 569497	POST 16 DP 569497	ob143	13°13'00"	C		26.86 C		Class B
POST 18 DP 569497	POST 17 DP 569497	ob144	10°25'00"	C		44.76 C		Class B
POST 18 DP 569497	POST 19 DP 569497	ob145	166°04'00"	C		24.68 C		Class B
POST 20 DP 569497	POST 19 DP 569497	ob146	12°04'00"	C		30.10 C		Class B
POST 21 DP 569497	POST 20 DP 569497	ob147	56°24'00"	C		20.10 C		Class B
IT IV DP 569497	POST 22 DP 569497	ob113	35°23'30"	M		267.76 M		
IT IV DP 569497	POST 23 DP 569497	ob114	40°28'30"	M		221.48 M		
IT IV DP 569497	POST 24 DP 569497	ob115	46°13'30"	M		199.18 M		
IT IV DP 569497	POST 25 DP 569497	ob116	50°43'00"	M		150.12 M		
IT IV DP 569497	POST 26 DP 569497	ob117	61°28'00"	M		140.74 M		
IT IV DP 569497	POST 27 DP 569497	ob118	62°36'00"	M		142.76 M		
IT IV DP 569497	POST 28 DP 569497	ob119	65°03'30"	M		137.94 M		
IT IV DP 569497	POST 29 DP 569497	ob120	78°11'00"	M		97.49 M		
IT IV DP 569497	POST 30 DP 569497	ob121	86°34'00"	M		68.93 M		
IT IV DP 569497	POST 31 DP 569497	ob122	103°59'00"	M		40.65 M		
IT IV DP 569497	POST 32 DP 569497	ob123	298°46'30"	M		89.51 M		
IT IV DP 569497	POST 33 DP 569497	ob124	299°09'30"	M		92.80 M		
IT IV DP 569497	POST 34 DP 569497	ob125	265°32'00"	M		132.48 M		
IT IV DP 569497	POST 35 DP 569497	ob126	255°48'00"	M		178.39 M		
IT IV DP 569497	POST 36 DP 569497	ob127	248°17'00"	M		241.76 M		
POST 22 DP 569497	POST 21 DP 569497	ob148	33°48'00"	C		54.94 C		Class B
POST 23 DP 569497	POST 22 DP 569497	ob149	12°48'00"	C		51.07 C		Class B
POST 23 DP 569497	POST 24 DP 569497	ob150	179°53'00"	C		30.69 C		Class B
POST 25 DP 569497	POST 24 DP 569497	ob151	32°53'00"	C		50.90 C		Class B

Mark and Vector

Survey Number DP 569497

Meridional Circuit Tuhirangi 2000

From	To	Code	Bearing	Adpt Surv	Bearing Correction	Distance	Adpt Surv	Class
POST 25 DP 569497	POST 26 DP 569497	ob152	165°00'00"	C		28.82 C		Class B
POST 26 DP 569497	POST 27 DP 569497	ob153	116°16'00"	C		3.45 C		Class B
POST 28 DP 569497	POST 27 DP 569497	ob154	12°25'00"	C		7.72 C		Class B
POST 29 DP 569497	POST 28 DP 569497	ob155	37°50'00"	C		48.36 C		Class B
POST 30 DP 569497	POST 29 DP 569497	ob156	59°15'00"	C		30.97 C		Class B
POST 31 DP 569497	POST 30 DP 569497	ob157	64°35'00"	C		32.51 C		Class B
POST 32 DP 569497	POST 31 DP 569497	ob158	114°10'00"	C		129.23 C		Class B
POST 34 DP 569497	POST 33 DP 569497	ob160	42°35'00"	C		75.43 C		Class B
POST 35 DP 569497	POST 34 DP 569497	ob161	50°42'00"	C		52.80 C		Class B
POST 36 DP 569497	POST 35 DP 569497	ob162	48°29'30"	C		68.98 C		Class B
IT V DP 569497	POST 37 DP 569497	ob19	49°01'00"	M		181.36 M		
IT V DP 569497	POST 38 DP 569497	ob20	37°39'00"	M		116.66 M		
IT V DP 569497	PEG 39 DP 569497	ob21	300°11'30"	M		113.39 M		
IT V DP 569497	POST 40 DP 569497	ob22	295°52'30"	M		179.07 M		
POST 37 DP 569497	POST 36 DP 569497	ob163	49°53'00"	C		151.58 C		Class B
POST 38 DP 569497	POST 37 DP 569497	ob164	67°57'30"	C		70.83 C		Class B
PEG 39 DP 569497	POST 38 DP 569497	ob165	78°12'30"	C		172.92 C		Class B
POST 40 DP 569497	PEG 39 DP 569497	ob166	108°30'30"	C		66.55 C		Class B
IT XIVA SO 37858	POST 41 DP 569497	ob29	113°39'30"	M		69.83 M		
IT XIVA SO 37858	PEG 42 DP 569497	ob30	49°39'30"	M		56.57 M		
IT XIVA SO 37858	PEG 43 DP 569497	ob31	49°31'30"	M		62.73 M		
IT XIVA SO 37858	POST 44 DP 569497	ob32	11°13'00"	M		88.02 M		
IT XIVA SO 37858	POST 45 DP 569497	ob33	343°11'30"	M		71.59 M		
IT XIVA SO 37858	POST 46 DP 569497	ob34	327°27'30"	M		93.34 M		

Mark and Vector

Survey Number DP 569497

Meridional Circuit Tuhirangi 2000

From	To	Code	Bearing	Adpt Surv	Bearing Correction	Distance	Adpt Surv	Class
IT XIVA SO 37858	POST 47 DP 569497	ob35	329°03'30" M			123.83 M		
IT VI DP 569497	IT VIII DP 569497	ob54	334°59'40" M			567.93 M		
IT VIII DP 569497	IT IX DP 569497	ob175	324°11'40" M			153.73 M		
IT IX DP 569497	IT IIA SO 37858	ob181	309°09'00" M			352.15 M		
POST 41 DP 569497	POST 40 DP 569497	ob169	126°15'30" C			51.86 C		Class B
PEG 42 DP 569497	POST 41 DP 569497	ob167	162°08'00" C			67.92 C		Class B
PEG 42 DP 569497	PEG 43 DP 569497	ob168	48°15'00" C			6.16 C		Class B
POST 44 DP 569497	UNMK (97) DP 569497	ob170	146°09'00" C			52.27 C		Class B
UNMK (97) DP 569497	PEG 43 DP 569497	ob498	146°09'00" C			2.66 C		Class B
POST 45 DP 569497	POST 44 DP 569497	ob171	64°48'00" C			41.81 C		Class B
POST 46 DP 569497	POST 45 DP 569497	ob172	108°59'00" C			31.20 C		Class B
POST 47 DP 569497	POST 46 DP 569497	ob173	153°57'00" C			30.64 C		Class B
IT IIA SO 37858	IT XXII SO 37858	ob10	247°26'40" M			170.45 M		
IT XXII SO 37858	IT XXI SO 37858	ob190	174°39'00" M			78.44 M		
IT XXI SO 37858	IT XV DP 569497	ob195	173°44'20" M			206.42 M		
IT XV DP 569497	IT IX DP 569497	ob196	72°30'00" M			420.11 M		
IT VI DP 569497	POST 48 DP 569497	ob55	163°13'00" M			120.43 M		
IT VI DP 569497	POST 49 DP 569497	ob56	114°06'30" M			54.82 M		
IT VI DP 569497	POST 50 DP 569497	ob57	88°54'00" M			35.17 M		
IT VI DP 569497	POST 51 DP 569497	ob58	27°35'00" M			40.23 M		
IT VI DP 569497	POST 52 DP 569497	ob59	344°39'30" M			101.45 M		
IT VI DP 569497	POST 53 DP 569497	ob60	348°50'00" M			192.59 M		
IT VI DP 569497	POST 55 DP 569497	ob61	347°02'30" M			273.70 M		
IT VI DP 569497	POST 54 DP 569497	ob62	347°26'30" M			221.77 M		

Mark and Vector

Survey Number DP 569497

Meridional Circuit Tuhirangi 2000

From	To	Code	Bearing	Adpt Surv	Bearing Correction	Distance	Adpt Surv	Class
IT VI DP 569497	POST 47 DP 569497	ob63	176°20'00"	M		146.31	M	
POST 47 DP 569497	POST 48 DP 569497	ob174	39°37'00"	C		39.86	C	Class B
POST 48 DP 569497	POST 49 DP 569497	ob197	9°20'00"	C		94.15	C	Class B
POST 50 DP 569497	POST 49 DP 569497	ob199	147°11'00"	C		27.45	C	Class B
POST 51 DP 569497	POST 50 DP 569497	ob200	154°43'00"	C		38.69	C	Class B
POST 52 DP 569497	UNMK (98) DP 569497	ob203	143°49'30"	C		35.17	C	Class B
UNMK (98) DP 569497	POST 51 DP 569497	ob499	143°49'30"	C		41.86	C	Class B
POST 53 DP 569497	POST 52 DP 569497	ob201	173°27'00"	C		91.71	C	Class B
POST 54 DP 569497	POST 53 DP 569497	ob204	158°19'00"	C		29.61	C	Class B
POST 55 DP 569497	POST 54 DP 569497	ob202	165°21'30"	C		51.96	C	Class B
IT XXII SO 37858	POST 74 DP 569497	ob191	45°53'00"	M		93.12	M	
IT XXII SO 37858	PEG 73 DP 569497	ob192	45°30'30"	M		102.53	M	
POST 74 DP 569497	UNMK (42) DP 569497	ob206	41°49'00"	C		5.40	C	Class B
UNMK (42) DP 569497	PEG 73 DP 569497	ob441	41°49'00"	C		4.04	C	Class B
UNMK (5) SO 37858	UNMK (41) DP 569497	ob297	45°56'00"	C		23.26	C	Class BD
UNMK (41) DP 569497	POST 74 DP 569497	ob439	45°56'00"	C		1.67	C	Class B
IT IIA SO 37858	PEG 72 DP 569497	ob11	224°10'00"	M		59.63	M	
IT IIA SO 37858	POST 71 DP 569497	ob12	199°15'00"	M		51.65	M	
PEG 73 DP 569497	UNMK (45) DP 569497	ob207	139°04'30"	C		28.06	C	Class B
UNMK (45) DP 569497	PEG 72 DP 569497	ob445	139°04'30"	C		37.13	C	Class B
PEG 72 DP 569497	POST 71 DP 569497	ob209	103°44'00"	C		25.24	C	Class B
IT IX DP 569497	POST 70 DP 569497	ob182	286°09'00"	M		92.43	M	
IT IX DP 569497	POST 69 DP 569497	ob183	285°57'30"	M		88.58	M	
IT IX DP 569497	POST 68 DP 569497	ob184	174°34'00"	M		29.09	M	

Mark and Vector

Survey Number DP 569497

Meridional Circuit Tuhirangi 2000

From	To	Code	Bearing	Adpt Surv	Bearing Correction	Distance	Adpt Surv	Class
IT IX DP 569497	POST 75 DP 569497	ob185	90°33'00"	M		18.89 M		
IT IX DP 569497	POST 76 DP 569497	ob186	345°02'30"	M		70.36 M		
IT IX DP 569497	POST 77 DP 569497	ob187	339°28'00"	M		130.86 M		
IT IX DP 569497	POST 78 DP 569497	ob188	333°04'00"	M		143.30 M		
POST 71 DP 569497	UNMK (46) DP 569497	ob211	126°17'30"	C		137.08 C		Class B
UNMK (46) DP 569497	POST 70 DP 569497	ob446	126°17'30"	C		112.71 C		Class B
POST 70 DP 569497	POST 69 DP 569497	ob212	110°23'00"	C		3.86 C		Class B
POST 69 DP 569497	POST 68 DP 569497	ob213	121°14'00"	C		102.83 C		Class B
POST 68 DP 569497	POST 75 DP 569497	ob215	29°16'00"	C		32.99 C		Class B
POST 76 DP 569497	POST 75 DP 569497	ob217	151°28'00"	C		77.58 C		Class B
POST 77 DP 569497	POST 76 DP 569497	ob218	153°03'30"	C		61.22 C		Class B
POST 78 DP 569497	POST 77 DP 569497	ob219	105°19'00"	C		19.71 C		Class B
IT VIII DP 569497	POST 66 DP 569497	ob176	5°49'00"	M		17.20 M		
IT VIII DP 569497	POST 65 DP 569497	ob177	123°48'00"	M		13.03 M		
IT VIII DP 569497	PEG 64 DP 569497	ob178	152°30'00"	M		55.60 M		
IT VIII DP 569497	POST 63 DP 569497	ob179	168°38'00"	M		74.75 M		
POST 66 DP 569497	POST 65 DP 569497	ob220	159°33'00"	C		26.00 C		Class B
POST 63 DP 569497	PEG 64 DP 569497	ob223	24°32'00"	C		26.34 C		Class B
IT VII DP 569497	POST 60 DP 569497	ob262	32°23'30"	M		53.84 M		
IT VII DP 569497	POST 59 DP 569497	ob263	65°59'00"	M		80.73 M		
POST 60 DP 569497	POST 59 DP 569497	ob225	105°41'00"	C		46.62 C		Class B
IT IA SO 37858	IT III SO 37858	ob74	257°35'20"	A SO 37858	0°00'00"	114.99 A SO 37858		
IT III SO 37858	IT XVI SO 37858	ob228	348°40'40"	A SO 37858	0°00'00"	62.33 A SO 37858		
IT XVI SO 37858	IT XVII SO 37858	ob229	85°18'10"	A SO 37858	0°00'00"	70.86 A SO 37858		

Mark and Vector

Survey Number DP 569497

Meridional Circuit Tuhirangi 2000

From	To	Code	Bearing	Adpt Surv	Bearing Correction	Distance	Adpt Surv	Class
IT XVII SO 37858	IT XIX SO 37858	ob231	46°00'30"	A SO 37858	0°00'00"	100.53	A SO 37858	
IT XIX SO 37858	IT XX SO 37858	ob232	16°36'00"	A SO 37858	0°00'00"	59.58	A SO 37858	
IT XX SO 37858	IT XXI SO 37858	ob233	358°26'00"	A SO 37858	0°00'00"	67.20	A SO 37858	
IT XVI SO 37858	PEG 1 SO 37858	ob230	349°08'00"	A SO 37858	0°00'00"	9.83	A SO 37858	
PEG 1 SO 37858	PEG (6) SO 15055	ob234	309°29'00"	A SO 15055	0°00'00"	42.21	A SO 37858	
PEG (6) SO 15055	PEG CCCIV SO 15055	ob235	201°13'30"	A SO 37858	0°00'00"	10.45	A SO 37858	
PEG CCCIV SO 15055	PEG CCCV SO 15055	ob236	275°28'00"	A SO 15055	0°00'00"	39.95	A SO 15055	
PEG CCCV SO 15055	PEG CCCVI SO 15055	ob237	302°52'00"	A SO 15055	0°00'00"	103.20	A SO 15055	
PEG CCCVI SO 15055	PEG CCCVII SO 15055	ob238	243°55'00"	A SO 15055	0°00'00"	33.15	A SO 15055	
PEG CCCVII SO 15055	PEG CCCVIII SO 15055	ob239	303°18'00"	A SO 15055	0°00'00"	7.20	A SO 15055	
PEG CCCVIII SO 15055	PEG CCCIX SO 15055	ob240	351°06'00"	A SO 15055	0°00'00"	38.74	A SO 15055	
PEG CCCIX SO 15055	PEG CCCX SO 15055	ob241	323°52'00"	A SO 15055	0°00'00"	47.96	A SO 15055	
PEG CCCX SO 15055	PEG I SO 15055	ob242	0°03'00"	A SO 15055	0°00'00"	53.71	A SO 15055	
PEG I SO 15055	PEG II SO 15055	ob243	336°02'00"	A SO 15055	0°00'00"	75.26	A SO 15055	
PEG II SO 15055	PEG III SO 15055	ob244	14°02'00"	A SO 15055	0°00'00"	49.35	A SO 15055	
PEG III SO 15055	PEG IV SO 15055	ob245	50°26'00"	A SO 15055	0°00'00"	52.32	A SO 15055	
PEG IV SO 15055	PEG V SO 15055	ob246	103°12'00"	A SO 15055	0°00'00"	63.25	A SO 15055	
PEG V SO 15055	PEG VI SO 15055	ob247	20°18'00"	A SO 15055	0°00'00"	44.28	A SO 15055	
PEG VI SO 15055	PEG VII SO 15055	ob248	95°22'00"	A SO 15055	0°00'00"	25.49	A SO 15055	
PEG VII SO 15055	PEG VIII SO 15055	ob249	112°36'00"	A SO 15055	0°00'00"	64.31	A SO 15055	
PEG VIII SO 15055	PEG IX SO 15055	ob250	123°08'00"	A SO 15055	0°00'00"	45.79	A SO 15055	
PEG IX SO 15055	PEG X SO 15055	ob251	62°27'00"	A SO 15055	0°00'00"	80.89	A SO 15055	
PEG X SO 15055	PEG XI SO 15055	ob252	118°12'00"	A SO 15055	0°00'00"	99.50	A SO 15055	
PEG XI SO 15055	PEG XLVII SO 15568	ob253	46°17'00"	A SO 15568	0°00'00"	79.38	A SO 15568	

Mark and Vector

Survey Number DP 569497

Meridional Circuit Tuhirangi 2000

From	To	Code	Bearing	Adpt Surv	Bearing Correction	Distance	Adpt Surv	Class
PEG XLVII SO 15568	PEG XLVI SO 15568	ob254	75°21'00"	A SO 15568	0°00'00"	28.91 A	SO 15568	
PEG XLVI SO 15568	PEG XLV SO 15568	ob256	9°08'00"	A SO 15568	0°00'00"	113.12 A	SO 15568	
PEG XLV SO 15568	PEG XLIV SO 15568	ob258	60°32'00"	A SO 15568	0°00'00"	65.38 A	SO 15568	
PEG XLIV SO 15568	PEG XLIII SO 15568	ob259	88°52'00"	A SO 15568	0°00'00"	95.37 A	SO 15568	
PEG XLIII SO 15568	PEG XLII SO 15568	ob260	62°27'00"	A SO 15568	0°00'00"	81.86 A	SO 15568	
PEG XLII SO 15568	PEG VII ML 2392	ob261	56°46'00"	A ML 2392	0°00'00"	46.35 A	ML 2392	
PEG VII ML 2392	PEG VI ML 2392	ob295	77°20'00"	A ML 2392	0°00'00"	98.23 A	ML 2392	
PEG VI ML 2392	PEG V ML 2392	ob300	26°30'00"	A ML 2392	0°00'00"	28.12 A	ML 2392	
PEG V ML 2392	PEG IV ML 2392	ob299	103°30'00"	A ML 2392	0°00'00"	42.21 A	ML 2392	
PEG IV ML 2392	PEG III ML 2392	ob302	72°09'00"	A ML 2392	0°00'00"	86.74 A	ML 2392	
PEG III ML 2392	PEG II ML 2392	ob304	286°39'00"	A ML 2392	0°00'00"	63.97 A	ML 2392	
PEG II ML 2392	PEG I ML 2392	ob307	327°03'00"	A ML 2392	0°00'00"	92.30 A	ML 2392	
PEG I ML 2392	PEG XXXIV SO 15568	ob308	57°01'00"	A ML 2392	0°00'00"	61.84 A	ML 2392	
PEG XXXIV SO 15568	PEG XXXIII SO 15568	ob309	53°28'00"	A ML 2392	0°00'00"	64.66 A	ML 2392	
PEG XXXIII SO 15568	PEG XXXII SO 15568	ob311	40°22'00"	A SO 15568	0°00'00"	348.14 A	SO 15568	
PEG XXXII SO 15568	PEG XXXI SO 15568	ob327	4°25'00"	A SO 15568	0°00'00"	238.16 A	SO 15568	
PEG XXXI SO 15568	PEG XXX SO 15568	ob328	31°58'00"	A SO 15568	0°00'00"	68.34 A	SO 15568	
PEG XXX SO 15568	PEG XXIX SO 15568	ob329	40°34'00"	A SO 15568	0°00'00"	49.11 A	SO 15568	
PEG XXIX SO 15568	PEG XXVIII SO 15568	ob330	31°46'00"	A SO 15568	0°00'00"	61.94 A	SO 15568	
PEG XXVIII SO 15568	PEG XXVI SO 15568	ob331	8°55'00"	A SO 15568	0°00'00"	48.68 A	SO 15568	
PEG XXVI SO 15568	PEG XXV SO 15568	ob332	19°20'00"	A SO 15568	0°00'00"	156.59 A	SO 15568	
PEG XXV SO 15568	PEG XXIV SO 15568	ob334	29°33'00"	A SO 15568	0°00'00"	79.12 A	SO 15568	
PEG XXIV SO 15568	PEG XXIII SO 15568	ob335	50°12'00"	A SO 15568	0°00'00"	26.98 A	SO 15568	
PEG XXIII SO 15568	PEG XXII SO 15568	ob336	71°16'00"	A SO 15568	0°00'00"	52.24 A	SO 15568	
PEG XXII SO 15568	PEG XXI SO 15568	ob337	31°23'00"	A SO 15568	0°00'00"	96.62 A	SO 15568	

Mark and Vector

Survey Number DP 569497

Meridional Circuit Tuhirangi 2000

From	To	Code	Bearing	Adpt Surv	Bearing Correction	Distance	Adpt Surv	Class
PEG XXI SO 15568	IS XX SO 19746	ob338	9°26'00"	A SO 15568	0°00'00"	245.12 A	SO 15568	
PEG 1 ML 2392	PEG 2 ML 2392	ob313	77°20'00"	A ML 2392	0°00'00"	101.19 A	ML 2392	Class B
PEG 2 ML 2392	PEG 100 DP 569497	ob317	72°09'00"	A ML 2392	0°00'00"	36.12 C		Class B
PEG 100 DP 569497	PEG 3 ML 2392	ob398	72°09'00"	A ML 2392	0°00'00"	14.35 C		Class B
PEG 3 ML 2392	PEG 4 ML 2392	ob318	84°42'00"	A ML 2392	0°00'00"	82.64 A	ML 2392	Class B
PEG 4 ML 2392	PEG 5 ML 2392	ob319	13°30'00"	A ML 2392	0°00'00"	34.90 A	ML 2392	Class B
PEG 5 ML 2392	PEG 6 ML 2392	ob320	287°48'00"	A ML 2392	0°00'00"	67.27 A	ML 2392	Class B
PEG 6 ML 2392	PEG 7 ML 2392	ob321	327°03'00"	A ML 2392	0°00'00"	51.78 A	ML 2392	Class B
PEG 7 ML 2392	PEG I ML 2392	ob322	311°44'00"	A ML 2392	0°00'00"	38.16 A	ML 2392	
PEG XLVII SO 15568	PEG (2) SO 15568	ob255	150°49'00"	C		10.39 C		
PEG (2) SO 15568	PEG (3) SO 15568	ob270	75°21'00"	A SO 15568	0°00'00"	32.85 A	SO 15568	Class B
PEG (3) SO 15568	PEG (4) SO 15568	ob291	14°22'00"	A SO 15568	0°00'00"	110.46 A	SO 15568	Class B
PEG (4) SO 15568	PEG (8) SO 15568	ob292	49°50'00"	A SO 15568	0°00'00"	54.13 A	SO 15568	Class B
PEG (8) SO 15568	PEG (9) SO 15568	ob324	94°44'00"	A SO 15568	0°00'00"	98.09 A	SO 15568	Class B
PEG (9) SO 15568	PEG (10) SO 15568	ob325	55°53'00"	A SO 15568	0°00'00"	88.11 A	SO 15568	Class B
PEG (10) SO 15568	PEG 1 ML 2392	ob326	56°42'00"	A ML 2392	0°00'00"	44.56 A	ML 2392	Class B
PEG 73 DP 569497	PEG (3) SO 15568	ob208	32°29'00"	C		30.96 C		Class B
IT XXII SO 37858	PEG (7) SO 37858	ob193	43°57'00"	A SO 37858	0°00'00"	87.72 A	SO 37858	
PEG (7) SO 37858	UNMK (5) SO 37858	ob296	217°18'30"	A SO 37858	0°00'00"	19.70 A	SO 37858	
PEG III ML 2392	PEG 4 ML 2392	ob305	177°50'00"	A ML 2392	0°00'00"	27.60 A	ML 2392	
PEG (2) SO 15568	UNMK (7) ML 2392	ob271	226°17'00"	A SO 15568	0°00'00"	40.23 A	ML 2392	Class BD
PEG XXVI SO 15568	PEG XXVIA ML 2392	ob333	176°00'00"	A ML 2392	0°00'00"	44.30 A	ML 2392	
PEG XXVIA ML 2392	PEG (10) ML 2392	ob345	123°23'00"	A ML 2392	0°00'00"	19.55 A	ML 2392	
PEG 7 ML 2392	PEG 105 DP 569497	ob323	21°36'00"	A ML 2392	0°00'00"	13.32 C		Class B
PEG 105 DP 569497	PEG 8 ML 2392	ob431	21°36'00"	A ML 2392	0°00'00"	31.18 C		Class B
PEG 8 ML 2392	PEG (9) SO 15568	ob339	53°28'00"	A ML 2392	0°00'00"	81.98 A	ML 2392	Class B
PEG (9) SO 15568	PEG (11) SO 15568	ob341	40°22'00"	A SO 15568	0°00'00"	352.55 A	SO 15568	Class B

Mark and Vector

Survey Number DP 569497

Meridional Circuit Tuhirangi 2000

From	To	Code	Bearing	Adpt Surv	Bearing Correction	Distance	Adpt Surv	Class
PEG (11) SO 15568	PEG (12) SO 15568	ob342	4°25'00"	A SO 15568	0°00'00"	238.95 A	SO 15568	Class B
PEG (12) SO 15568	PEG (13) SO 15568	ob343	31°58'00"	A SO 15568	0°00'00"	65.10 A	SO 15568	Class B
PEG (13) SO 15568	PEG (14) SO 15568	ob344	40°34'00"	A SO 15568	0°00'00"	49.11 A	SO 15568	Class B
PEG (14) SO 15568	PEG (15) SO 15568	ob346	31°46'00"	A SO 15568	0°00'00"	57.88 A	SO 15568	Class B
PEG (15) SO 15568	PEG (10) ML 2392	ob347	83°02'00"	A SO 15568	0°00'00"	21.12 A	SO 15568	Class B
PEG III ML 2392	PEG 5 ML 2392	ob306	55°19'00"	A ML 2392	0°00'00"	11.18 A	ML 2392	
TRIG JUNCTION SO 15573	PEG (2) ML 2392	ob67	31°13'00"	A ML 2392	0°00'00"	626.43 C		Class C
PEG (2) ML 2392	PEG (10) ML 2392	ob69	303°23'00"	A ML 2392	0°00'00"	1,210.59 A	ML 2392	Class C
UPOKOERA	UNMK (1) SO 15055	ob68	227°51'08"	A SO 15573	0°00'00"	716.16 C		
UNMK (1) SO 15055	PEG I SO 15055	ob70	227°51'08"	A SO 15573	0°00'00"	15.96 C		Class BD
PEG I SO 15055	PEG II SO 15055	ob354	322°36'00"	A SO 15055	0°00'00"	404.49 A	SO 15055	
PEG II SO 15055	PEG III SO 15055	ob71	305°25'00"	A SO 15055	0°00'00"	90.53 A	SO 15055	
PEG III SO 15055	PEG IV SO 15055	ob348	319°00'00"	A SO 15055	0°00'00"	135.23 A	SO 15055	
PEG IV SO 15055	PEG V SO 15055	ob349	351°56'00"	A SO 15055	0°00'00"	181.39 A	SO 15055	
PEG V SO 15055	PEG VI SO 15055	ob350	337°56'00"	A SO 15055	0°00'00"	268.76 A	SO 15055	
PEG VI SO 15055	PEG VII SO 15055	ob351	22°39'00"	A SO 15055	0°00'00"	90.79 A	SO 15055	
PEG VII SO 15055	PEG VIII SO 15055	ob352	320°43'00"	A SO 15055	0°00'00"	84.93 A	SO 15055	
PEG VIII SO 15055	PEG IX SO 15055	ob353	320°23'00"	A SO 15055	0°00'00"	223.10 A	SO 15055	
PEG I SO 15055	UNMK (15) ML 2392	ob355	227°51'08"	A SO 15573	0°00'00"	4.16 C		Class BD
IB SO 25271	POST 1 DP 316976	ob40	356°38'00"	A DP 316976	0°00'00"	15.38 A	DP 316976	Class B
POST 1 DP 316976	POST 2 DP 316976	ob356	3°15'30"	A DP 316976	0°00'00"	46.72 A	DP 316976	Class B
POST 2 DP 316976	POST 3 DP 316976	ob357	312°14'00"	A DP 316976	0°00'00"	22.29 A	DP 316976	Class B
POST 3 DP 316976	POST 4 DP 316976	ob358	29°31'00"	A DP 316976	0°00'00"	8.81 A	DP 316976	Class B
POST 4 DP 316976	POST 5 DP 316976	ob359	312°47'00"	A DP 316976	0°00'00"	10.07 A	DP 316976	Class B

Mark and Vector

Survey Number DP 569497

Meridional Circuit Tuhirangi 2000

From	To	Code	Bearing	Adpt Surv	Bearing Correction	Distance	Adpt Surv	Class
POST 5 DP 316976	POST 6 DP 316976	ob360	22°52'00"	A DP 316976	0°00'00"	31.58 A	DP 316976	Class B
POST 6 DP 316976	POST 7 DP 316976	ob361	285°01'30"	A DP 316976	0°00'00"	53.58 A	DP 316976	Class B
POST 7 DP 316976	POST 8 DP 316976	ob362	52°11'40"	A DP 316976	0°00'00"	108.78 A	DP 316976	Class B
POST 8 DP 316976	POST 9 DP 316976	ob363	100°52'00"	A DP 316976	0°00'00"	30.93 A	DP 316976	Class B
POST 9 DP 316976	POST 10 DP 316976	ob364	114°40'00"	A DP 316976	0°00'00"	3.87 A	DP 316976	Class B
POST 10 DP 316976	POST 11 DP 316976	ob365	70°25'00"	A DP 316976	0°00'00"	17.06 A	DP 316976	Class B
POST 11 DP 316976	PEG 12 DP 316976	ob366	130°37'00"	A DP 316976	0°00'00"	45.61 A	DP 316976	Class B
IB SO 25271	PEG (12) SO 15573	ob41	213°42'00"	A SO 15573	0°00'00"	10.06 A	SO 15573	Class B
PEG (12) SO 15573	UNMK (16) SO 15573	ob367	213°42'00"	A SO 15573	0°00'00"	207.75 A	SO 15573	Class BD
BP 1 SO 453134	UNMK (16) SO 15573	ob4	220°10'00"	C		227.96 C		
IT XIVA SO 37858	UNMK (15) ML 2392	ob36	227°23'20"	C		194.92 C		
IT VI DP 569497	IT VII DP 569497	ob64	323°20'40"	M		412.62 M		
IT VII DP 569497	IT VIII DP 569497	ob264	1°57'20"	M		183.80 M		
IT XVA SO 37858	IT VII DP 569497	ob24	30°15'30"	M		189.68 M		
IT IX DP 569497	IT X DP 569497	ob189	19°33'20"	M		344.80 M		
IT X DP 569497	IT XI DP 569497	ob272	83°22'00"	M		329.99 M		
IT XI DP 569497	IT XII DP 569497	ob284	83°03'00"	M		284.80 M		
IT XII DP 569497	IT XIII DP 569497	ob293	86°09'00"	M		350.39 M		
IT XIII DP 569497	IT VI DP 569497	ob298	215°06'30"	M		1,296.25 M		
IT DXXV SO 37858	IT X DP 569497	ob76	97°22'30"	M		387.82 M		
IT IIA SO 37858	IT DXXV SO 37858	ob13	1°27'40"	M		152.42 M		
IT XII DP 569497	IT XIV DP 569497	ob294	64°17'00"	M		255.84 M		
IT XIV DP 569497	IT XIII DP 569497	ob312	126°17'50"	M		147.77 M		
IT VII DP 569497	POST 61 DP 569497	ob265	20°17'00"	M		71.98 M		
IT VII DP 569497	POST 58 DP 569497	ob266	86°59'00"	M		94.17 M		

Mark and Vector

Survey Number DP 569497

Meridional Circuit Tuhirangi 2000

From	To	Code	Bearing	Adpt Surv	Bearing Correction	Distance	Adpt Surv	Class
IT VII DP 569497	POST 56 DP 569497	ob267	97°43'30" M			101.81 M		
IT VII DP 569497	POST 57 DP 569497	ob268	93°38'00" M			104.75 M		
IT VII DP 569497	POST 62 DP 569497	ob269	15°04'00" M			104.39 M		
POST 59 DP 569497	POST 58 DP 569497	ob227	143°57'00" C			34.51 C		Class B
POST 58 DP 569497	POST 57 DP 569497	ob316	137°53'00" C			15.65 C		Class B
POST 56 DP 569497	UNMK (64) DP 569497	ob368	27°27'00" C			7.02 C		Class B
UNMK (64) DP 569497	POST 57 DP 569497	ob464	27°27'00" C			0.92 C		Class B
POST 56 DP 569497	POST 55 DP 569497	ob369	121°03'00" C			98.13 C		Class B
POST 63 DP 569497	POST 62 DP 569497	ob224	147°28'00" C			11.40 C		Class B
POST 61 DP 569497	POST 62 DP 569497	ob314	3°46'00" C			33.35 C		Class B
POST 61 DP 569497	POST 60 DP 569497	ob315	170°00'00" C			22.39 C		Class B
POST 65 DP 569497	PEG 64 DP 569497	ob222	160°34'00" C			44.61 C		Class B
IT IIA SO 37858	POST 79 DP 569497	ob14	93°35'30" M			148.14 M		
IT IIA SO 37858	PEG 80 DP 569497	ob15	79°25'00" M			167.96 M		
IT IIA SO 37858	POST 81 DP 569497	ob16	78°49'00" M			231.18 M		
POST 79 DP 569497	POST 78 DP 569497	ob370	144°44'00" C			104.48 C		Class B
POST 79 DP 569497	PEG 80 DP 569497	ob371	23°17'00" C			43.67 C		Class B
PEG 80 DP 569497	POST 81 DP 569497	ob372	77°14'00" C			63.25 C		Class B
IT X DP 569497	PEG 82 DP 569497	ob273	268°38'30" M			55.56 M		
IT X DP 569497	POST 83 DP 569497	ob274	274°54'00" M			57.30 M		
IT X DP 569497	POST 84 DP 569497	ob275	102°46'00" M			35.10 M		
IT X DP 569497	POST 85 DP 569497	ob276	30°30'30" M			88.70 M		
IT X DP 569497	POST 86 DP 569497	ob277	32°50'00" M			91.08 M		
IT X DP 569497	POST 87 DP 569497	ob278	48°49'00" M			102.34 M		

Mark and Vector

Survey Number DP 569497

Meridional Circuit Tuhirangi 2000

From	To	Code	Bearing	Adpt Surv	Bearing Correction	Distance	Adpt Surv	Class
IT X DP 569497	POST 88 DP 569497	ob279	69°08'00" M			151.52 M		
IT X DP 569497	POST 89 DP 569497	ob280	75°50'00" M			171.04 M		
IT X DP 569497	POST 90 DP 569497	ob281	87°28'00" M			246.92 M		
IT X DP 569497	POST 96 DP 569497	ob282	41°35'30" M			184.18 M		
POST 81 DP 569497	PEG 82 DP 569497	ob373	62°01'00" C			120.22 C		Class B
PEG 82 DP 569497	POST 83 DP 569497	ob374	346°02'00" C			6.40 C		Class B
POST 83 DP 569497	POST 84 DP 569497	ob375	97°53'30" C			92.19 C		Class B
POST 84 DP 569497	POST 85 DP 569497	ob376	7°19'00" C			84.87 C		Class B
POST 85 DP 569497	POST 86 DP 569497	ob377	88°37'00" C			4.35 C		Class B
POST 86 DP 569497	POST 87 DP 569497	ob378	108°18'00" C			29.10 C		Class B
POST 87 DP 569497	POST 88 DP 569497	ob379	101°45'00" C			65.95 C		Class B
POST 88 DP 569497	POST 89 DP 569497	ob380	116°32'00" C			27.10 C		Class B
POST 89 DP 569497	POST 90 DP 569497	ob381	110°57'30" C			86.57 C		Class B
IT XI DP 569497	POST 90A DP 569497	ob285	258°55'00" M			47.74 M		
IT XI DP 569497	POST 91 DP 569497	ob286	258°26'00" M			41.66 M		
IT XI DP 569497	POST 92 DP 569497	ob287	314°18'00" M			60.43 M		
IT XI DP 569497	POST 93 DP 569497	ob288	294°37'00" M			146.97 M		
IT XI DP 569497	POST 94 DP 569497	ob289	288°49'00" M			178.72 M		
IT XI DP 569497	POST 95 DP 569497	ob290	288°41'30" M			219.44 M		
IT DXXV SO 37858	IT XVI DP 569497	ob77	71°34'00" M			417.48 M		
IT XVI DP 569497	IT XVII DP 569497	ob389	66°41'50" M			54.62 M		
IT XVII DP 569497	IT XI DP 569497	ob394	121°50'20" M			313.32 M		
IT XVI DP 569497	PEG 100 DP 569497	ob390	259°18'00" M			58.90 M		
IT XVI DP 569497	PEG 99 DP 569497	ob391	244°03'00" M			30.79 M		

Mark and Vector

Survey Number DP 569497

Meridional Circuit Tuhirangi 2000

From	To	Code	Bearing	Adpt Surv	Bearing Correction	Distance	Adpt Surv	Class
IT XVI DP 569497	PEG 98 DP 569497	ob392	104°31'00" M			48.46 M		
IT XVII DP 569497	PEG 97 DP 569497	ob395	157°51'00" M			29.23 M		
IT XVII DP 569497	PEG 101 DP 569497	ob396	76°20'00" M			22.98 M		
IT XVII DP 569497	PEG 102 DP 569497	ob397	328°54'00" M			51.67 M		
IT X DP 569497	POST 95 DP 569497	ob283	47°52'30" M			161.68 M		
PEG 100 DP 569497	UNMK (17) DP 569497	ob399	94°56'00" C			23.69 C		Class B
UNMK (17) DP 569497	PEG 99 DP 569497	ob405	94°50'00" C			6.61 C		Class B
PEG 99 DP 569497	UNMK (18) DP 569497	ob400	88°59'00" C			3.42 C		Class B
UNMK (18) DP 569497	PEG 98 DP 569497	ob407	88°59'00" C			71.18 C		Class B
PEG 98 DP 569497	PEG 97 DP 569497	ob401	64°58'00" C			15.76 C		Class B
PEG 97 DP 569497	PEG 101 DP 569497	ob402	19°10'00" C			34.42 C		Class B
POST 90 DP 569497	POST 90A DP 569497	ob382	62°14'00" C			38.70 C		Class B
POST 90A DP 569497	POST 91 DP 569497	ob383	82°13'00" C			6.10 C		Class B
POST 91 DP 569497	UNMK (19) DP 569497	ob384	357°14'30" C			7.03 C		Class B
UNMK (19) DP 569497	POST 92 DP 569497	ob409	357°14'30" C			43.59 C		Class B
POST 95 DP 569497	POST 96 DP 569497	ob387	4°34'00" C			29.40 C		Class B
POST 95 DP 569497	POST 94 DP 569497	ob388	108°09'00" C			40.72 C		Class B
POST 94 DP 569497	POST 93 DP 569497	ob386	84°15'00" C			35.74 C		Class B
POST 93 DP 569497	POST 92 DP 569497	ob385	101°53'00" C			92.34 C		Class B
PEG 97 DP 569497	POST 96 DP 569497	ob403	127°51'30" C			62.87 C		Class B
UNMK (17) DP 569497	UNMK (20) DP 569497	ob406	137°06'00" C			37.85 C		Class B
UNMK (20) DP 569497	UNMK (21) DP 569497	ob410	114°31'00" C			12.41 C		Class B
UNMK (21) DP 569497	UNMK (22) DP 569497	ob411	119°39'00" C			37.48 C		Class B
UNMK (22) DP 569497	UNMK (23) DP 569497	ob412	119°44'00" C			35.99 C		Class B

Mark and Vector

Survey Number DP 569497

Meridional Circuit Tuhirangi 2000

From	To	Code	Bearing	Adpt Surv	Bearing Correction	Distance	Adpt Surv	Class
UNMK (23) DP 569497	UNMK (24) DP 569497	ob413	102°41'00"	C		37.71 C		Class B
UNMK (24) DP 569497	UNMK (25) DP 569497	ob414	119°59'00"	C		15.76 C		Class B
UNMK (25) DP 569497	UNMK (26) DP 569497	ob415	111°25'00"	C		25.13 C		Class B
UNMK (26) DP 569497	UNMK (27) DP 569497	ob416	107°22'00"	C		55.73 C		Class B
UNMK (27) DP 569497	UNMK (28) DP 569497	ob417	117°09'00"	C		29.92 C		Class B
UNMK (28) DP 569497	UNMK (29) DP 569497	ob418	119°35'00"	C		27.83 C		Class B
UNMK (29) DP 569497	POST 90A DP 569497	ob419	92°56'00"	C		25.05 C		Class B
UNMK (18) DP 569497	UNMK (30) DP 569497	ob408	137°06'00"	C		29.28 C		Class B
UNMK (30) DP 569497	UNMK (31) DP 569497	ob420	114°31'00"	C		11.32 C		Class B
UNMK (31) DP 569497	UNMK (32) DP 569497	ob421	119°39'00"	C		37.80 C		Class B
UNMK (32) DP 569497	UNMK (33) DP 569497	ob422	119°44'00"	C		34.94 C		Class B
UNMK (33) DP 569497	UNMK (34) DP 569497	ob423	102°41'00"	C		37.72 C		Class B
UNMK (34) DP 569497	UNMK (35) DP 569497	ob424	119°59'00"	C		16.30 C		Class B
UNMK (35) DP 569497	UNMK (36) DP 569497	ob425	111°25'00"	C		24.36 C		Class B
UNMK (36) DP 569497	UNMK (37) DP 569497	ob426	107°22'00"	C		56.08 C		Class B
UNMK (37) DP 569497	UNMK (38) DP 569497	ob427	117°09'00"	C		30.66 C		Class B
UNMK (38) DP 569497	UNMK (39) DP 569497	ob428	119°35'00"	C		26.32 C		Class B
UNMK (39) DP 569497	UNMK (40) DP 569497	ob429	92°56'00"	C		22.85 C		Class B
UNMK (40) DP 569497	UNMK (19) DP 569497	ob430	82°13'00"	C		5.95 C		Class B
PEG 102 DP 569497	PEG 101 DP 569497	ob404	128°22'00"	C		62.52 C		Class B
IT XVI DP 569497	IT XVIII DP 569497	ob393	348°37'00"	M		101.98 M		
IT XVIII DP 569497	IT XVII DP 569497	ob433	138°06'30"	M		105.27 M		
IT XVIII DP 569497	PEG 105 DP 569497	ob434	298°32'00"	M		23.89 M		
IT XVIII DP 569497	PEG 103 DP 569497	ob435	168°08'00"	M		31.49 M		

Mark and Vector

Survey Number DP 569497

Meridional Circuit Tuhirangi 2000

From	To	Code	Bearing	Adpt Surv	Bearing Correction	Distance	Adpt Surv	Class
IT XVIII DP 569497	POST 104 DP 569497	ob436	268°23'00"	M		18.59 M		
PEG 105 DP 569497	POST 104 DP 569497	ob432	168°37'00"	C		12.18 C		Class B
POST 104 DP 569497	PEG 103 DP 569497	ob438	140°24'00"	C		39.31 C		Class B
PEG 103 DP 569497	PEG 102 DP 569497	ob437	95°05'00"	C		37.27 C		Class B
PEG VI ML 2392	PEG 2 ML 2392	ob301	141°56'00"	A ML 2392	0°00'00"	11.14 A ML 2392		
PEG IV ML 2392	PEG 3 ML 2392	ob303	171°17'00"	A ML 2392	0°00'00"	8.71 A ML 2392		
PEG XXXIV SO 15568	PEG 8 ML 2392	ob310	201°36'00"	A ML 2392	0°00'00"	19.05 A ML 2392		
UNMK (42) DP 569497	UNMK (43) DP 569497	ob442	124°39'00"	C		8.43 C		Class B
UNMK (43) DP 569497	UNMK (44) DP 569497	ob443	128°30'00"	C		8.52 C		Class B
UNMK (44) DP 569497	UNMK (45) DP 569497	ob444	137°16'00"	C		11.01 C		Class B
PEG 72 DP 569497	UNMK (47) DP 569497	ob210	123°06'00"	C		17.22 C		Class B
UNMK (47) DP 569497	UNMK (48) DP 569497	ob447	116°42'00"	C		30.86 C		Class B
UNMK (48) DP 569497	UNMK (49) DP 569497	ob448	124°24'00"	C		77.62 C		Class B
UNMK (49) DP 569497	UNMK (46) DP 569497	ob449	124°39'00"	C		35.16 C		Class B
IT VIII DP 569497	POST 67 DP 569497	ob180	12°25'00"	M		23.24 M		
POST 68 DP 569497	POST 67 DP 569497	ob216	128°23'00"	C		117.59 C		Class B
POST 66 DP 569497	POST 67 DP 569497	ob221	30°11'00"	C		6.47 C		Class B
POST 69 DP 569497	UNMK (50) DP 569497	ob214	126°32'00"	C		26.95 C		Class B
UNMK (50) DP 569497	UNMK (51) DP 569497	ob450	124°45'00"	C		18.07 C		Class B
UNMK (51) DP 569497	UNMK (52) DP 569497	ob451	133°30'00"	C		45.28 C		Class B
UNMK (52) DP 569497	UNMK (53) DP 569497	ob452	154°44'00"	C		16.46 C		Class B
UNMK (53) DP 569497	UNMK (54) DP 569497	ob453	144°00'00"	C		8.64 C		Class B
UNMK (54) DP 569497	UNMK (55) DP 569497	ob454	131°30'00"	C		40.00 C		Class B
UNMK (55) DP 569497	UNMK (56) DP 569497	ob455	129°32'00"	C		17.56 C		Class B

Mark and Vector

Survey Number DP 569497

Meridional Circuit Tuhirangi 2000

From	To	Code	Bearing	Adpt Surv	Bearing Correction	Distance	Adpt Surv	Class
UNMK (56) DP 569497	UNMK (57) DP 569497	ob456	122°09'00"	C		21.48 C		Class B
UNMK (57) DP 569497	UNMK (58) DP 569497	ob457	111°28'00"	C		23.53 C		Class B
UNMK (58) DP 569497	UNMK (59) DP 569497	ob458	127°53'00"	C		11.09 C		Class B
UNMK (59) DP 569497	UNMK (60) DP 569497	ob459	158°21'00"	C		11.28 C		Class B
UNMK (60) DP 569497	UNMK (61) DP 569497	ob460	181°12'00"	C		15.02 C		Class B
UNMK (61) DP 569497	UNMK (62) DP 569497	ob461	185°55'00"	C		19.96 C		Class B
UNMK (62) DP 569497	UNMK (63) DP 569497	ob462	170°51'00"	C		16.93 C		Class B
UNMK (63) DP 569497	POST 63 DP 569497	ob463	144°42'00"	C		20.02 C		Class B
POST 60 DP 569497	UNMK (65) DP 569497	ob226	163°47'00"	C		7.20 C		Class B
UNMK (65) DP 569497	UNMK (66) DP 569497	ob466	126°21'00"	C		10.52 C		Class B
UNMK (66) DP 569497	UNMK (64) DP 569497	ob467	121°32'30"	C		76.05 C		Class B
UNMK (41) DP 569497	UNMK (67) DP 569497	ob440	124°39'00"	C		9.19 C		Class B
UNMK (67) DP 569497	UNMK (68) DP 569497	ob468	128°30'00"	C		7.75 C		Class B
UNMK (68) DP 569497	UNMK (69) DP 569497	ob469	137°16'00"	C		10.37 C		Class B
UNMK (69) DP 569497	UNMK (70) DP 569497	ob470	139°04'30"	C		38.01 C		Class B
UNMK (70) DP 569497	UNMK (71) DP 569497	ob471	123°06'00"	C		18.59 C		Class B
UNMK (71) DP 569497	UNMK (72) DP 569497	ob472	116°42'00"	C		30.78 C		Class B
UNMK (72) DP 569497	UNMK (73) DP 569497	ob473	124°24'00"	C		77.14 C		Class B
UNMK (73) DP 569497	UNMK (74) DP 569497	ob474	124°39'00"	C		35.08 C		Class B
UNMK (74) DP 569497	UNMK (75) DP 569497	ob475	126°17'30"	C		113.59 C		Class B
UNMK (75) DP 569497	UNMK (76) DP 569497	ob476	124°30'00"	C		29.88 C		Class B
UNMK (76) DP 569497	UNMK (77) DP 569497	ob477	124°45'00"	C		17.56 C		Class B
UNMK (77) DP 569497	UNMK (78) DP 569497	ob478	133°30'00"	C		43.43 C		Class B
UNMK (78) DP 569497	UNMK (79) DP 569497	ob479	154°44'00"	C		15.81 C		Class B

Mark and Vector

Survey Number DP 569497

Meridional Circuit Tuhirangi 2000

From	To	Code	Bearing	Adpt Surv	Bearing Correction	Distance	Adpt Surv	Class
UNMK (79) DP 569497	UNMK (80) DP 569497	ob480	144°00'00"	C		10.07 C		Class B
UNMK (80) DP 569497	UNMK (81) DP 569497	ob481	131°30'00"	C		40.88 C		Class B
UNMK (81) DP 569497	UNMK (82) DP 569497	ob482	129°32'00"	C		18.13 C		Class B
UNMK (82) DP 569497	UNMK (83) DP 569497	ob483	122°09'00"	C		22.58 C		Class B
UNMK (83) DP 569497	UNMK (84) DP 569497	ob484	111°28'00"	C		23.18 C		Class B
UNMK (84) DP 569497	UNMK (85) DP 569497	ob485	127°53'00"	C		8.17 C		Class B
UNMK (85) DP 569497	UNMK (86) DP 569497	ob486	158°21'00"	C		7.96 C		Class B
UNMK (86) DP 569497	UNMK (87) DP 569497	ob487	181°12'00"	C		13.31 C		Class B
UNMK (87) DP 569497	UNMK (88) DP 569497	ob488	185°55'00"	C		20.59 C		Class B
UNMK (88) DP 569497	UNMK (89) DP 569497	ob489	170°51'00"	C		19.48 C		Class B
UNMK (89) DP 569497	UNMK (90) DP 569497	ob490	144°42'00"	C		22.06 C		Class B
UNMK (90) DP 569497	UNMK (91) DP 569497	ob491	169°57'00"	C		20.63 C		Class B
UNMK (91) DP 569497	UNMK (92) DP 569497	ob492	183°46'00"	C		18.65 C		Class B
UNMK (92) DP 569497	UNMK (93) DP 569497	ob493	173°16'00"	C		22.08 C		Class B
UNMK (93) DP 569497	UNMK (94) DP 569497	ob494	157°26'00"	C		12.05 C		Class B
UNMK (94) DP 569497	UNMK (95) DP 569497	ob495	126°21'00"	C		12.76 C		Class B
UNMK (95) DP 569497	POST 56 DP 569497	ob496	121°32'30"	C		76.85 C		Class B
UNMK (64) DP 569497	UNMK (116) DP 569497	ob465	121°02'30"	C		101.42 C		Class B
UNMK (116) DP 569497	UNMK (96) DP 569497	ob518	165°21'30"	C		55.28 C		Class B
UNMK (96) DP 569497	POST 53 DP 569497	ob497	172°03'00"	C		29.11 C		Class B
POST 54 DP 569497	UNMK (99) DP 569497	ob205	173°07'00"	C		122.17 C		Class B
UNMK (99) DP 569497	UNMK (100) DP 569497	ob501	143°49'30"	C		37.70 C		Class B
UNMK (100) DP 569497	UNMK (101) DP 569497	ob502	132°19'00"	C		22.01 C		Class B
UNMK (101) DP 569497	UNMK (102) DP 569497	ob503	156°59'00"	C		18.61 C		Class B

Mark and Vector

Survey Number DP 569497

Meridional Circuit Tuhirangi 2000

From	To	Code	Bearing	Adpt Surv	Bearing Correction	Distance	Adpt Surv	Class
UNMK (102) DP 569497	UNMK (103) DP 569497	ob504	154°43'00"	C		39.29 C		Class B
UNMK (103) DP 569497	UNMK (104) DP 569497	ob505	147°11'00"	C		24.88 C		Class B
UNMK (104) DP 569497	UNMK (105) DP 569497	ob506	193°57'30"	C		82.83 C		Class B
UNMK (105) DP 569497	UNMK (106) DP 569497	ob507	214°13'00"	C		25.26 C		Class B
UNMK (106) DP 569497	UNMK (107) DP 569497	ob508	201°07'00"	C		22.28 C		Class B
UNMK (107) DP 569497	UNMK (108) DP 569497	ob509	161°19'00"	C		40.09 C		Class B
UNMK (108) DP 569497	UNMK (109) DP 569497	ob510	105°51'30"	C		74.99 C		Class B
UNMK (109) DP 569497	PEG 42 DP 569497	ob511	110°20'00"	C		32.90 C		Class B
UNMK (98) DP 569497	UNMK (110) DP 569497	ob500	132°19'00"	C		22.84 C		Class B
UNMK (110) DP 569497	POST 51 DP 569497	ob512	156°59'00"	C		20.01 C		Class B
POST 49 DP 569497	UNMK (111) DP 569497	ob198	193°57'30"	C		87.11 C		Class B
UNMK (111) DP 569497	UNMK (112) DP 569497	ob513	214°13'00"	C		25.70 C		Class B
UNMK (112) DP 569497	UNMK (113) DP 569497	ob514	201°07'00"	C		18.94 C		Class B
UNMK (113) DP 569497	UNMK (114) DP 569497	ob515	161°19'00"	C		33.88 C		Class B
UNMK (114) DP 569497	UNMK (115) DP 569497	ob516	105°51'30"	C		71.59 C		Class B
UNMK (115) DP 569497	UNMK (97) DP 569497	ob517	110°20'00"	C		33.90 C		Class B
POST 33 DP 569497	POST 32 DP 569497	ob159	129°28'00"	C		3.35 C		Class B
PEG XLVI SO 15568	PEG (3) SO 15568	ob257	132°14'30"	C		12.01 C		
IT DXXIV SO 37858	IT XVIII DP 569497	ob79	140°25'00"	C		0.07 C		
IT XIX DP 569497	IT XIX SO 25271	ob44	46°19'00"	C		0.19 C		
IT XIX SO 25271	IB SO 25271	ob519	125°05'20"	A	SO 25271	0°00'00"	192.01 A	SO 25271
IT XVA SO 37858	IT IX DP 57839	ob25	170°08'40"	M		624.65 M		
IT XXII SO 37858	UNMK (7) ML 2392	ob194	25°02'10"	C		68.27 C		
IT DXXV SO 37858	IT XVIII DP 569497	ob78	58°19'20"	M		441.75 M		

Mark and Vector

Survey Number DP 569497

Meridional Circuit Tuhirangi 2000

From	To	Code	Bearing	Adpt Surv	Bearing Correction	Distance	Adpt Surv	Class
IT XIX DP 569497	IT I DP 316976	ob42	103°52'50" M			152.76 M		
IT XIVA SO 37858	UNMK (1) SO 15055	ob26	227°20'00" C			174.80 C		

Mark Name	Mark Condition	Description
IT DXXIV SO 37858		IT DXXIV SO 37858, found disturbed, fixed in current position as IT XVIII
IT I DP 569497		Down 0.1
IT XIX DP 569497		New Position of IT XIX SO 25271
IT XIX SO 25271		Mark found disturbed, fixed in new position as IT XIX
IT XVIII DP 569497		New position of IT DXXIV SO 37858
PEG (2) ML 2392		Deduced, $7038.75 \text{ l (ML 2392)} - 3924.8 \text{ l (SO 15573)} = 3113.95 \text{ l}$
PEG II ML 2392		Position over bank
PEG III ML 2392		Position over bank
PEG IV ML 2392		Position over bank
PEG XLIV SO 15568		Position over bank
PEG (7) SO 37858	Searched For and Not Found	
PEG 3 ML 2392	Searched For and Not Found	Position in road formation
PEG 4 ML 2392	Searched For and Not Found	
PEG 5 ML 2392	Searched For and Not Found	
PEG 6 ML 2392	Searched For and Not Found	Position in Road formation
PEG 7 ML 2392	Searched For and Not Found	Position in Road formation
PEG 8 ML 2392	Searched For and Not Found	
PEG XLV SO 15568	Searched For and Not Found	
PEG XLVI SO 15568	Searched For and Not Found	Position in Road Formation
UPOKOERA	Searched For and Not Found	

*** End of Report ***

Schedule / Memorandum

Land Registration District

Wellington

Survey Number

LT 569497

Territorial Authority (the Council)

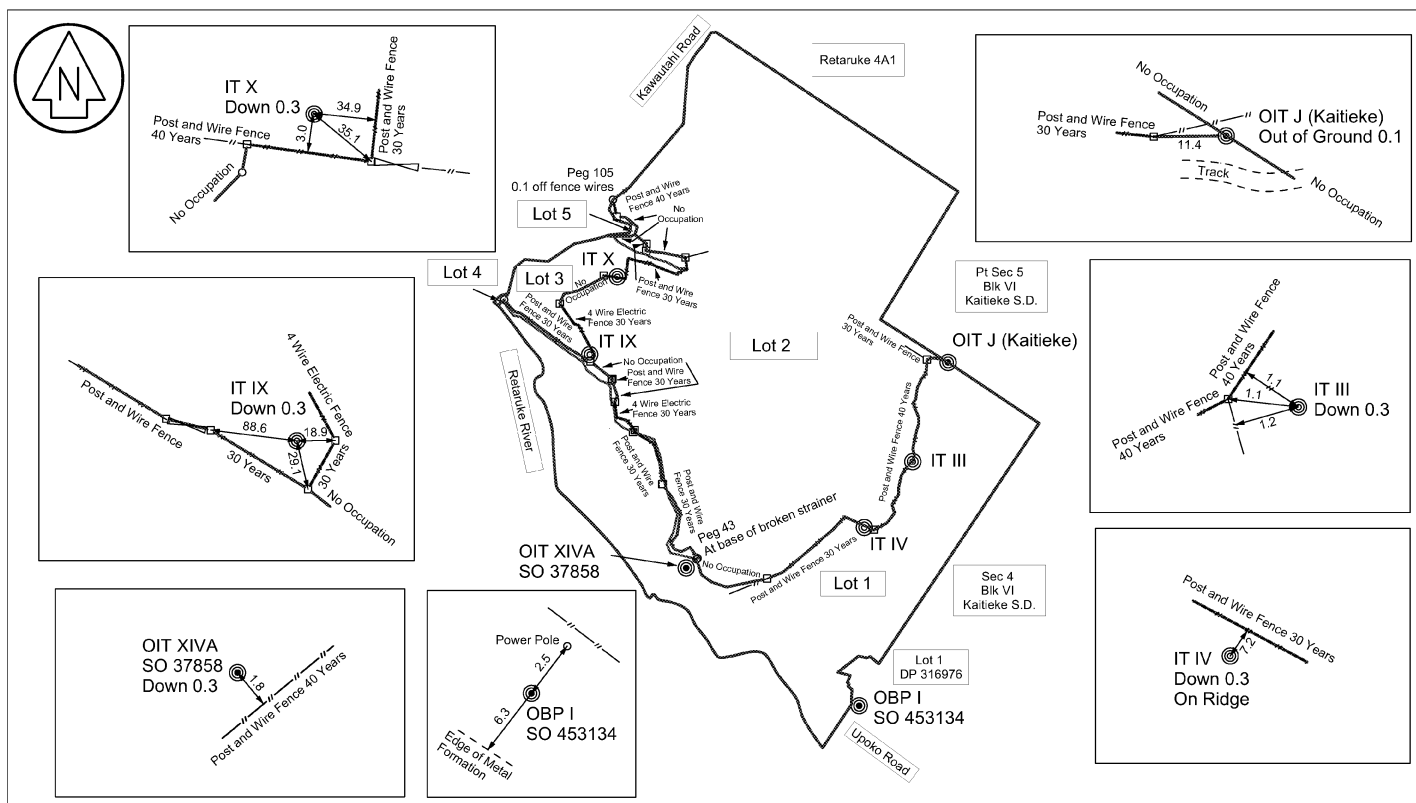
Ruapehu District

Memorandum of Easements

Last Edited: 06 Sep 2022 12:42:10

<u>Purpose</u>	<u>Shown</u>	<u>Burdened Land</u> (<u>Servient Tenement</u>)	<u>Benefited Land</u> (<u>Dominant Tenement</u>)
Right of Way	A B, D C, E	Lot 3 Lot 1 Lot 2	Lot 2 Lot 2 Lot 1

Occupation Diagram



Drawing Type:
PRM Diagram

Drawn By:
M Proude
Licensed Cadastral Surveyor

PRM and Occupation Diagram of LT 569497

Kawautahi Road, KAITIEKE

Prepared By:
Foresight Surveying Limited
175 Pakihi Road
RD 1
OHAKUNE

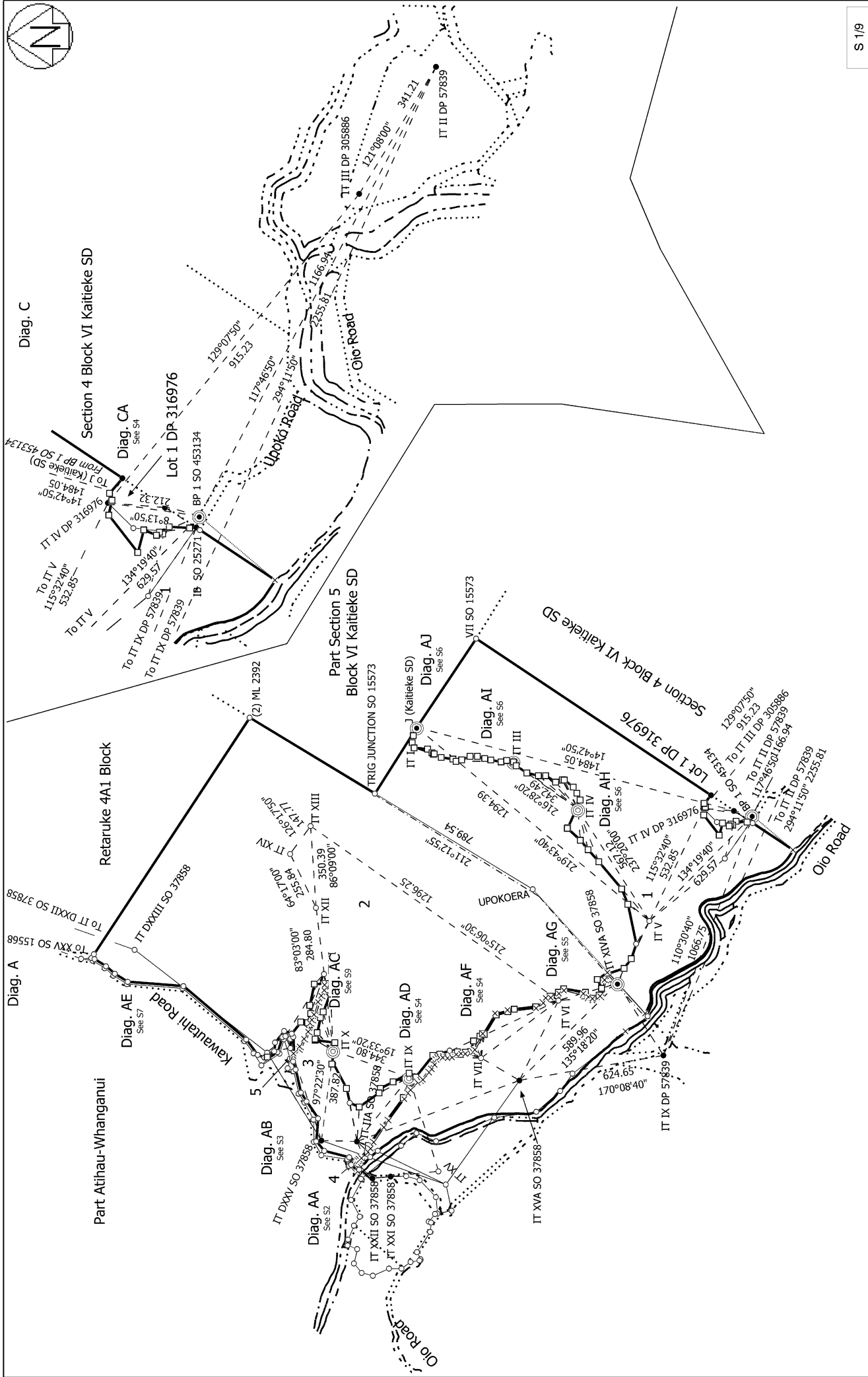
Scale: 1:15000 @ A3

Ref: VET1121

RDC Ref:
Areas and Dimensions are Subject to Final Survey

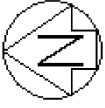
This drawing and its contents are the property of Foresight Surveying Ltd. We do not undertake any reproduction, in full or in part, without prior permission.

Revision Record	Date	Rev	App'd
VETPRM	12/12/22	1	A
Drawing Number	Sheet	Revision	



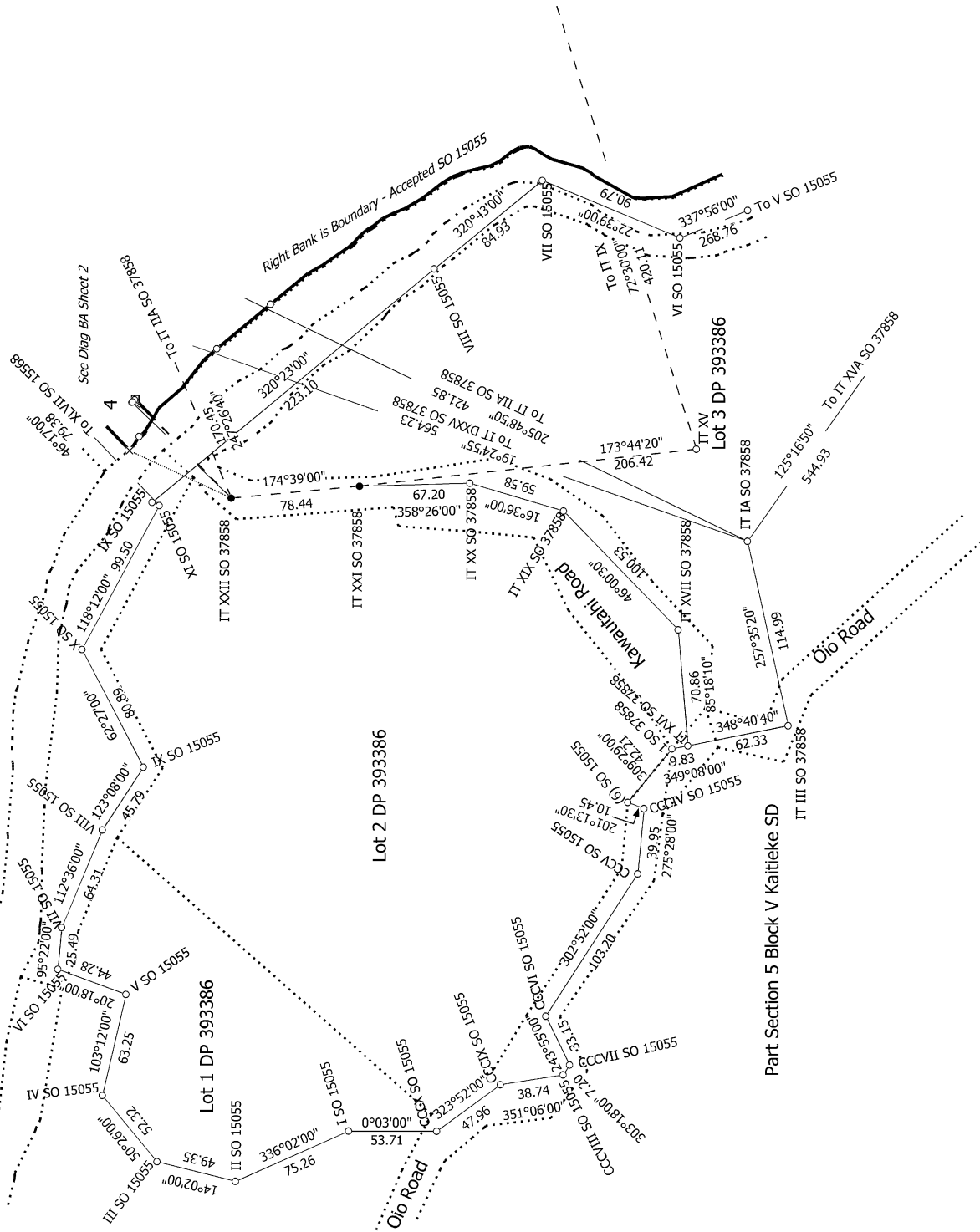
S 1/9

<p>Land District: Wellington</p>	<p>Lots 1 - 5 Being a Subdivision of Part Retaruke 4C and Lot 2 DP 316976</p>	<p>Record of Survey DP 569497</p>
<p>Digitally Generated Plan Generated on: 02/11/2023 2:59pm Page 27 of 43</p>	<p>Surveyor: Michael Philip Proutie Firm: Foresight Surveying Limited Date of Survey: 31/08/2022</p>	<p>Deposited on: 11/10/2023</p>



Diag. AA

Part Atihau-Whanganui



S 2/9

Land District: Wellington

Digitally Generated Plan

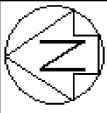
Generated on: 02/11/2023 2:59pm Page 28 of 43

Lots 1 - 5 Being a Subdivision of Part Retaruke 4C and Lot 2 DP 316976

Surveyor: Michael Philip Proutie
Firm: Foresight Surveying Limited
Date of Survey: 31/08/2022

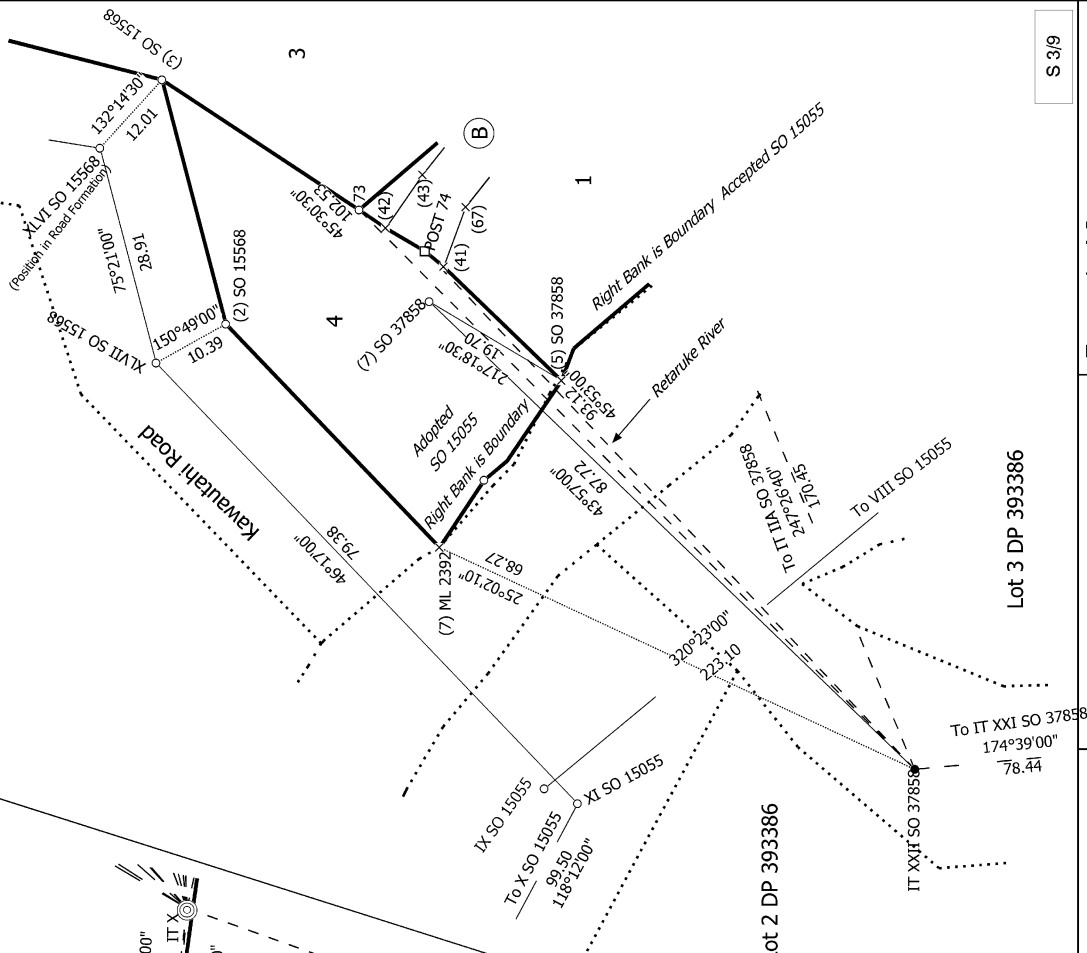
Record of Survey
DP 569497

Deposited on: 11/10/2023



Diag. ABA

Part Atihau-Whanganui



S 3/9

Record of Survey
DP 569497

Deposited on: 11/10/2023

Surveyor: Michael Philip Proude
Firm: Foresight Surveying Limited
Date of Survey: 31/08/2022

Lots 1 - 5 Being a Subdivision of Part Retaruke 4C and Lot 2 DP 316976

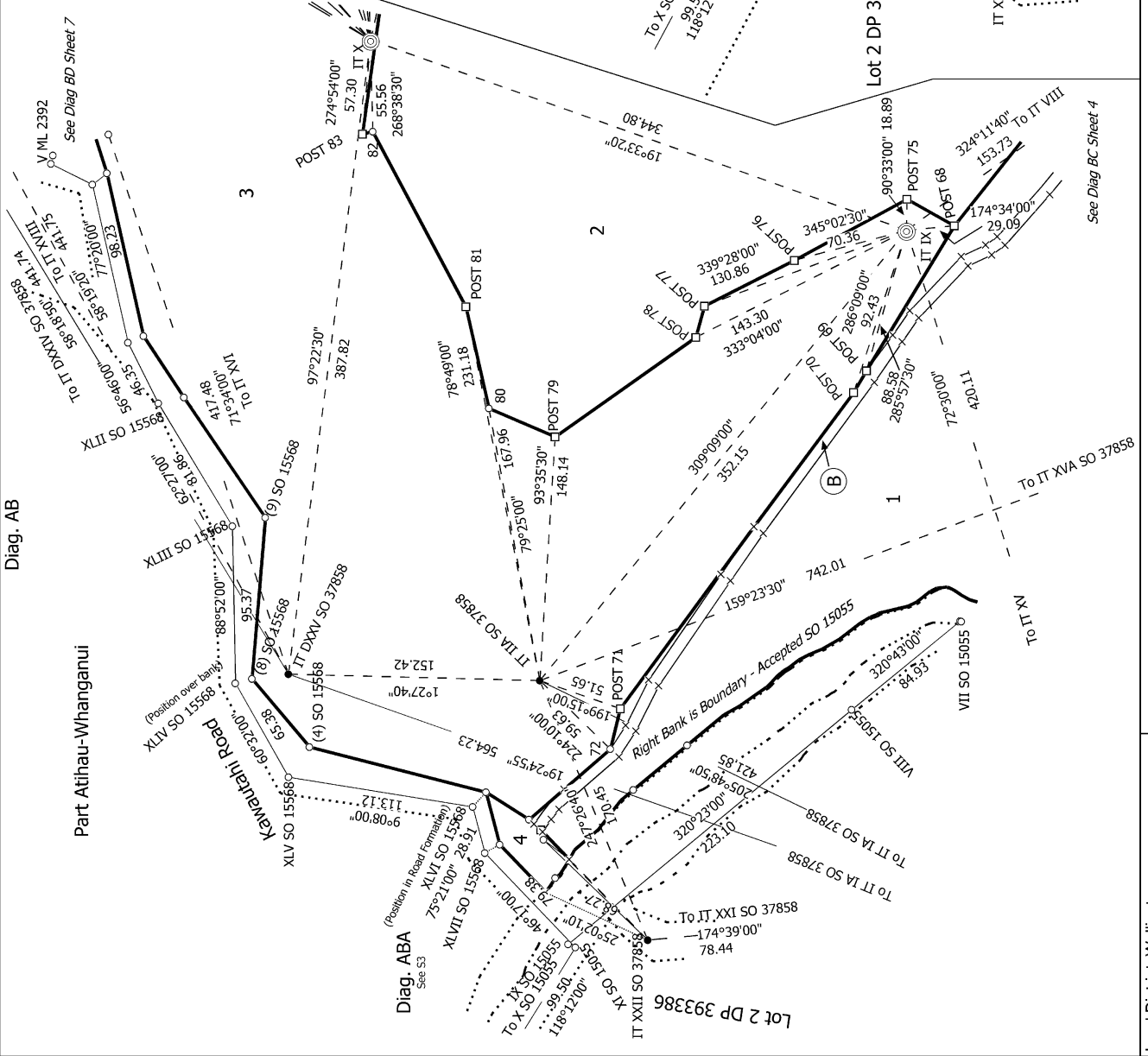
Land District: Wellington

Digitally Generated Plan

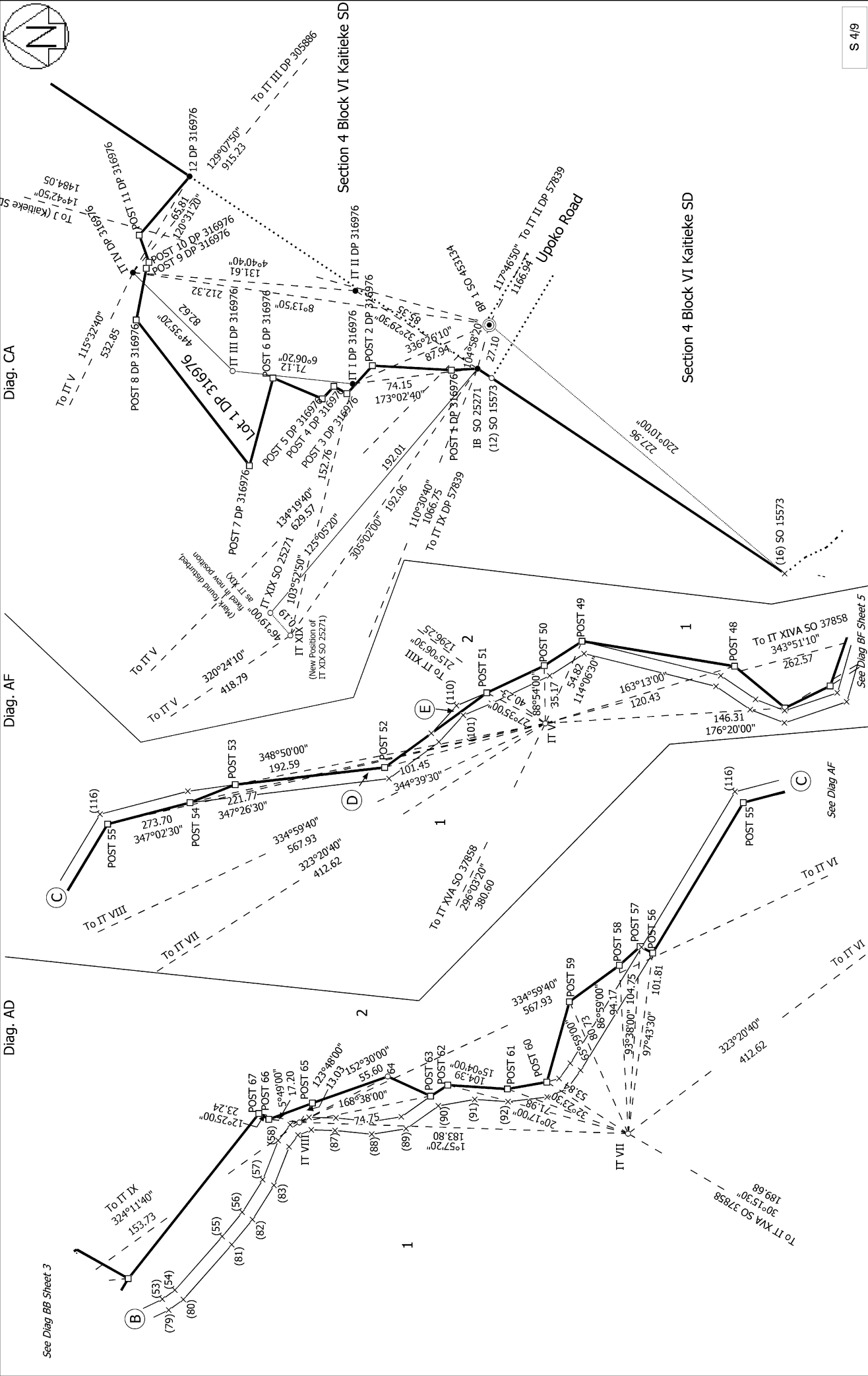
Generated on: 02/11/2023 2:59pm Page 29 of 43

Diag. AB

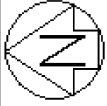
Part Atihau-Whanganui



See Diag BC Sheet 4



<p>Land District: Wellington</p> <p>Digitally Generated Plan Generated on: 02/11/2023 2:59pm Page 30 of 43</p>	<p>Lots 1 - 5 Being a Subdivision of Part Retaruke 4C and Lot 2 DP 316976</p>	<p>Surveyor: Michael Philip Proudle Firm: Foresight Surveying Limited Date of Survey: 31/08/2022</p>	<p>Record of Survey DP 569497</p> <p>Deposited on: 11/10/2023</p>
---	--	--	--



Diag. AG

2

1

See Diag BE Sheet 4

To IT VI — 343°51'10"
262.57

329°03'30"
123.83

To POST 47

To IT XVA SO 37858
135°18'20"
589.96

POST 44

POST 45

POST 46

POST 47

(115)

(109)

43

42

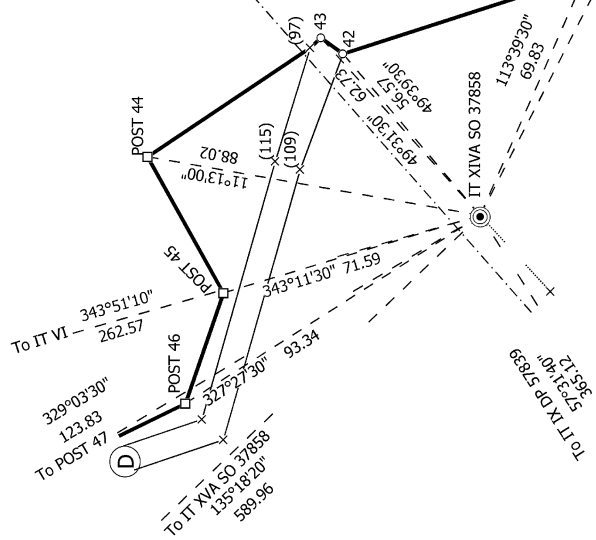
41

40

39

38

37



To J (Kaiteke SD)

See Diag BG Sheet 6

219°43'40"
1294.39

49°01'00"
181.36

To IT IV
237°20'00"
567.12

37°39'00"
116.66

To IT IV DP 316976
115°32'40"
532.85

To BP L SO 453134
134°19'40"
623.57

To IT XX

179°07'
295°32'30"

300°11'30"
113.39

117°08'30"
259.93

11°13'00"
88.02

49°39'30"
56.57

49°31'30"
52.73

113°39'30"
69.83

11°13'00"
88.02

343°11'30"
71.59

32°27'30"
93.34

To IT IX DP 57639
59°31'40"
365.12

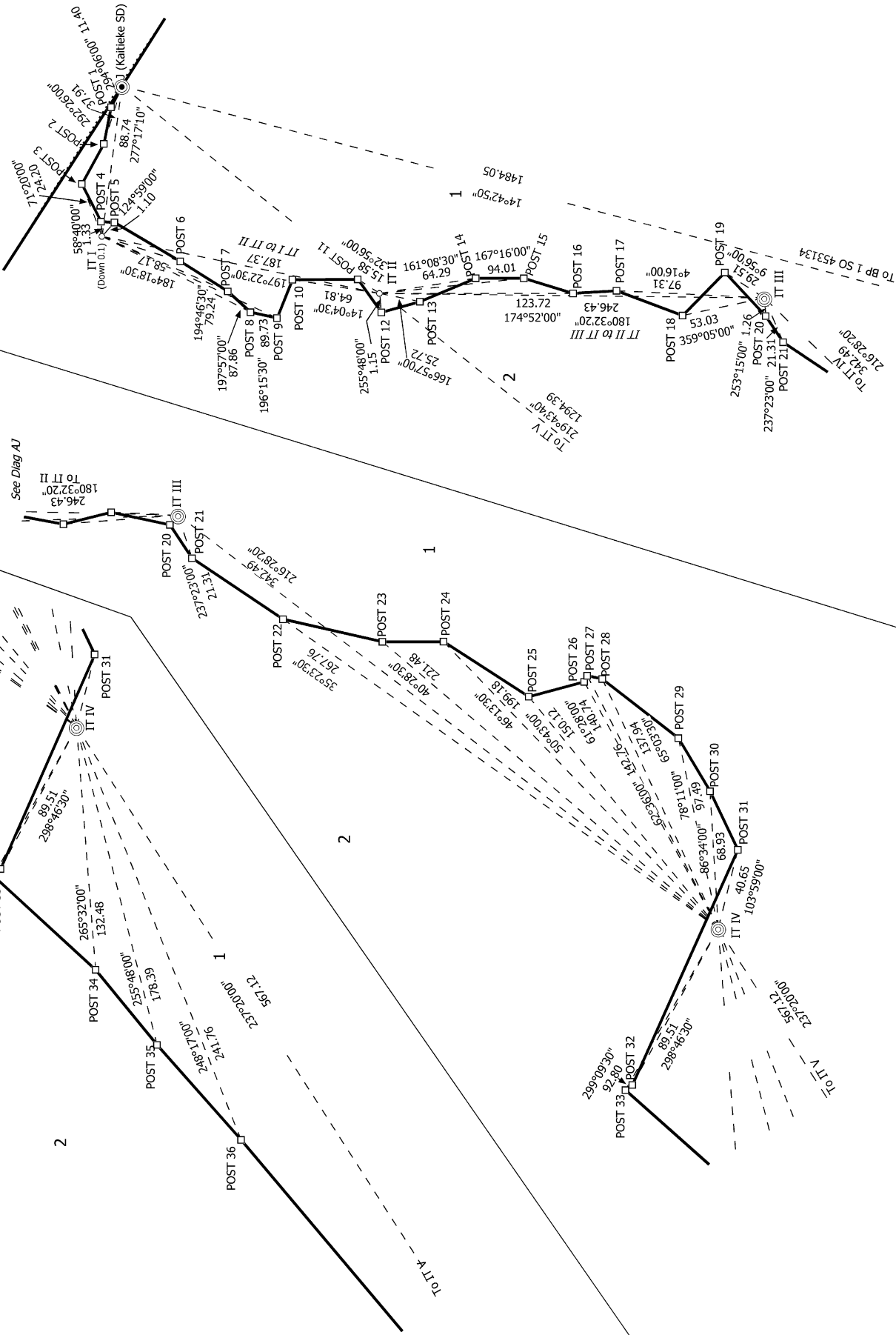
S 5/9

Land District: Wellington	Lots 1 - 5 Being a Subdivision of Part Retaruke 4C and Lot 2 DP 316976	Record of Survey DP 569497 Deposited on: 11/10/2023
Digitally Generated Plan Generated on: 02/11/2023 2:59pm Page 31 of 43	Surveyor: Michael Philip Proud Firm: Foresight Surveying Limited Date of Survey: 31/08/2022	



Diag. AH
Diag. AI
Diag. AJ

Part Section 5 Block VI Kaitiaki SD



S 6/9

Land District: Wellington

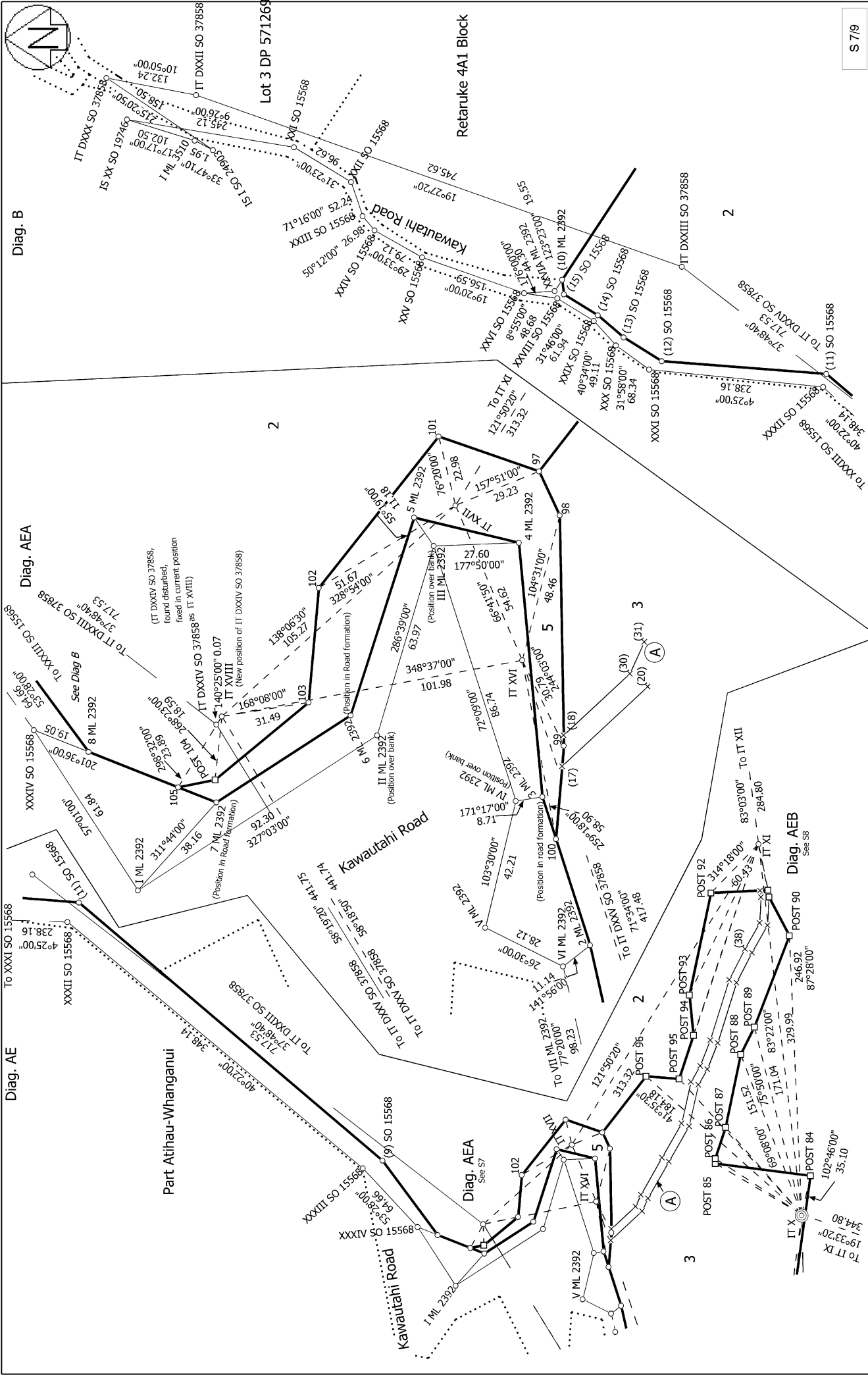
Digitally Generated Plan
Generated on: 02/11/2023 2:59pm Page 32 of 43

Lots 1 - 5 Being a Subdivision of Part Retaruke 4C and Lot 2 DP 316976

Surveyor: Michael Philip Proude
Firm: Foresight Surveying Limited
Date of Survey: 31/08/2022

Record of Survey
DP 569497

Deposited on: 11/10/2023



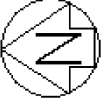
S 7/9

Record of Survey
 DP 569497
 Deposited on: 11/10/2023

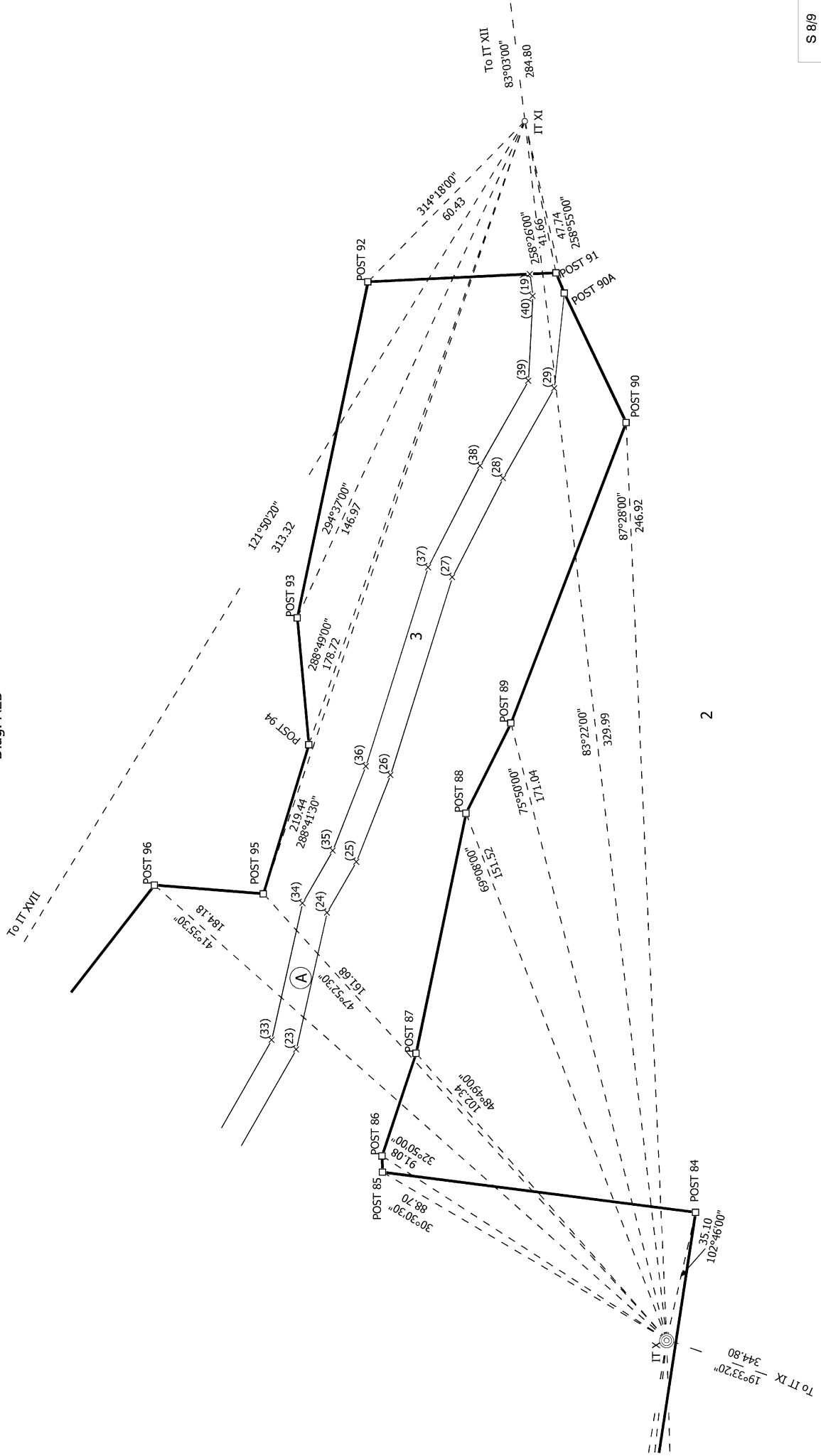
Surveyor: Michael Philip Proude
 Firm: Foresight Surveying Limited
 Date of Survey: 31/08/2022

Lots 1 - 5 Being a Subdivision of Part Retaruke 4C and Lot 2 DP 316976

Land District: Wellington
 Digitally Generated Plan
 Generated on: 02/11/2023 2:59pm Page 33 of 43

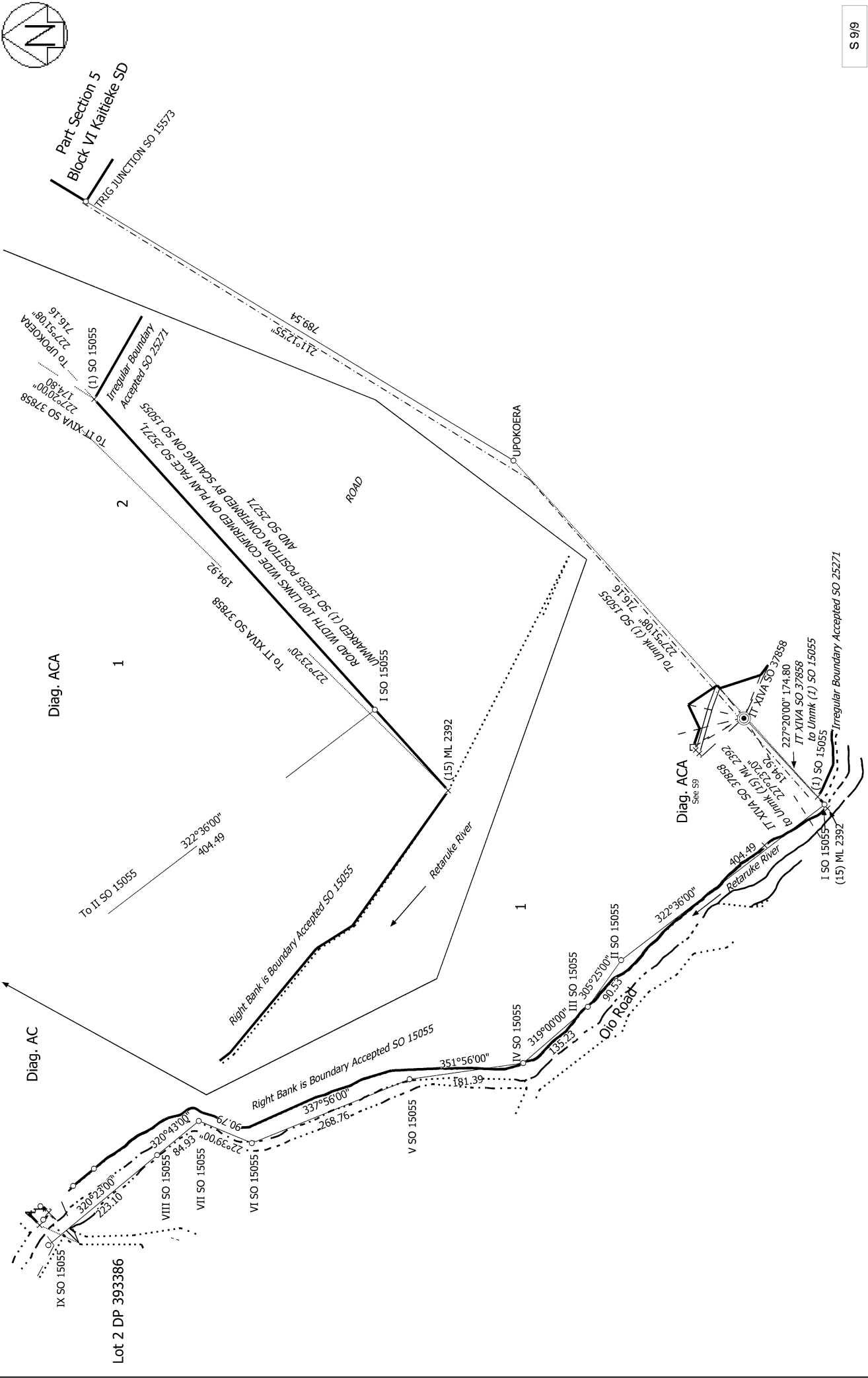
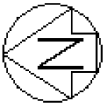


Diag. AEB



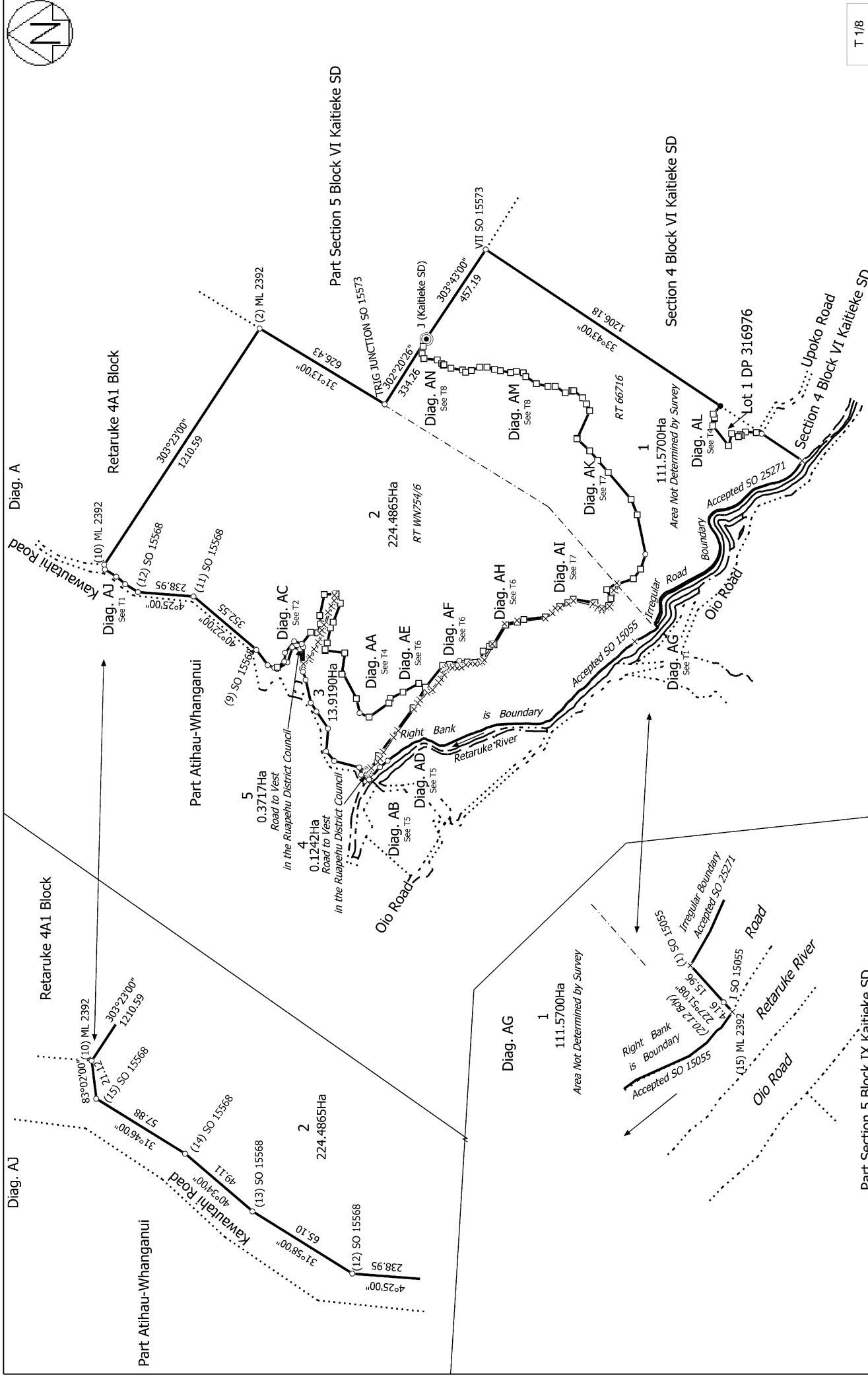
S 8/9

<p>Land District: Wellington</p> <p>Digitally Generated Plan</p> <p>Generated on: 02/11/2023 2:59pm Page 34 of 43</p>	<p>Lots 1 - 5 Being a Subdivision of Part Retaruke 4C and Lot 2 DP 316976</p>	<p>Surveyor: Michael Philip Proude Firm: Foresight Surveying Limited Date of Survey: 31/08/2022</p>	<p>Record of Survey DP 569497 Deposited on: 11/10/2023</p>
--	--	---	--



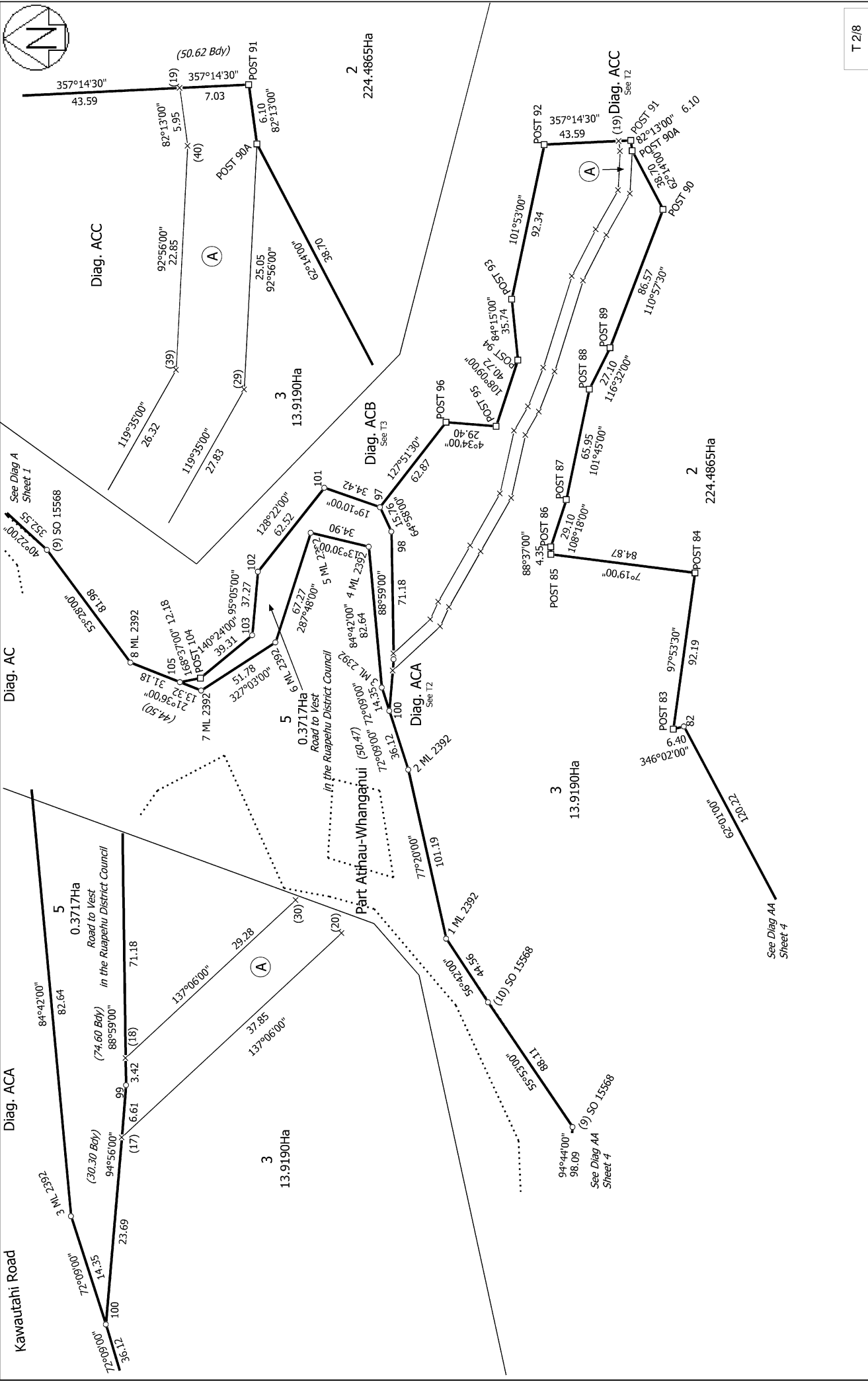
S 9/9

Land District: Wellington	Lots 1 - 5 Being a Subdivision of Part Retaruke 4C and Lot 2 DP 316976	Record of Survey DP 569497
Digitally Generated Plan Generated on: 02/11/2023 2:59pm Page 35 of 43	Surveyor: Michael Philip Proudle Firm: Foresight Surveying Limited Date of Survey: 31/08/2022	Deposited on: 11/10/2023

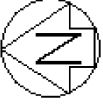


T 1/8

Land District: Wellington	Surveyor: Michael Philip Proudle Firm: Foresight Surveying Limited Date of Survey: 31/08/2022	Record of Survey DP 569497 Deposited on: 11/10/2023
<p>Part Section 5 Block IX Kaitieke SD</p> <p>Lots 1 - 5 Being a Subdivision of Part Retaruke 4C and Lot 2 DP 316976</p>		<p>Part Section 5 Block VI Kaitieke SD</p>
<p>Digitally Generated Plan Generated on: 02/11/2023 2:59pm Page 36 of 43</p>		



T 2/8



Diag. ACB

Kawautahi Road

0.3717Ha
Road to Vest
in the Ruapehu District Council

5

3 ML 2392
94°56'00" (17) 82.64
23.69 84°42'00" 71.18
137°06'00" 29.28
137°06'00" 37.85
114°31'00" (21) 11.32
119°39'00" 37.80
119°39'00" 34.94
119°44'00" 37.72
102°41'00" 37.71
102°41'00" 37.72
119°39'00" (24) 16.30
119°39'00" (25) 15.76
119°39'00" (26) 25.13
111°25'00" 24.36
107°22'00" 56.08
107°22'00" 55.73
117°09'00" 29.92
117°09'00" 30.66
119°35'00" 26.32
119°35'00" 27.83
92°56'00" (29) 22.85
92°56'00" (30) 25.05
82°13'00" (40) 5.95
82°13'00" (39) 7.03
357°14'30" 43.59
357°14'30" 0.135
POST 91
POST 90A

2
224.4865Ha

POST 95
108°09'00" 40.72

3
13.9190Ha

2
224.4865Ha

T 3/8

Land District: Wellington

Digitally Generated Plan

Generated on: 02/11/2023 2:59pm Page 36 of 43

Lots 1 - 5 Being a Subdivision of Part Retaruke 4C and Lot 2 DP 316976

Surveyor: Michael Philip Proudle
Firm: Foresight Surveying Limited
Date of Survey: 31/08/2022

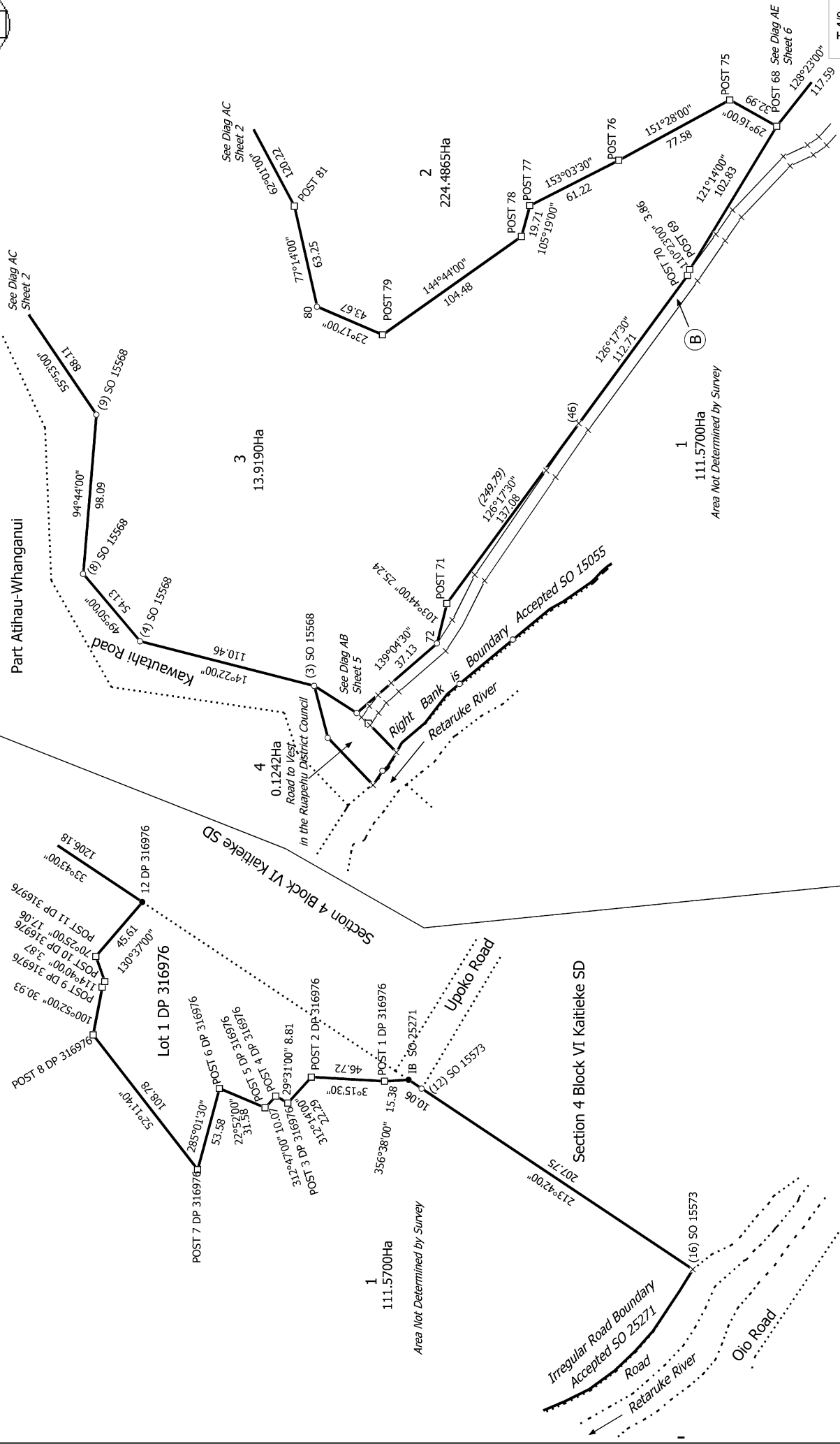
Record of Survey
DP 569497

Deposited on: 11/10/2023



Diag. AA

Diag. AL



Land District: Wellington

Digitally Generated Plan

Generated on: 02/11/2023 2:59pm Page 39 of 43

Lots 1 - 5 Being a Subdivision of Part Retaruke 4C and Lot 2 DP 316976

Surveyor: Michael Philip Proude
Firm: Foresight Surveying Limited
Date of Survey: 31/08/2022

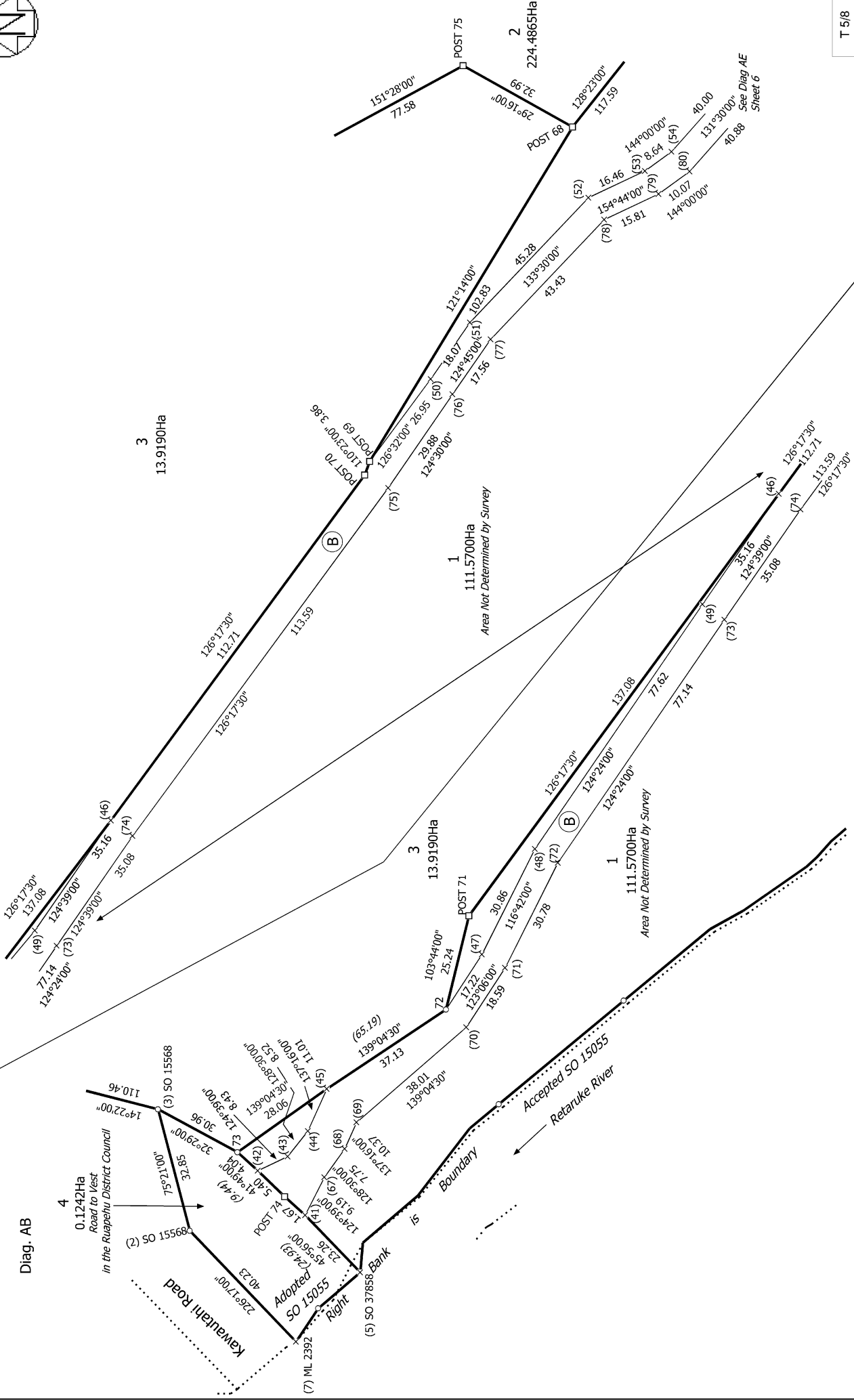
Record of Survey
DP 569497

Deposited on: 11/10/2023

T 4/8



Diag. AD

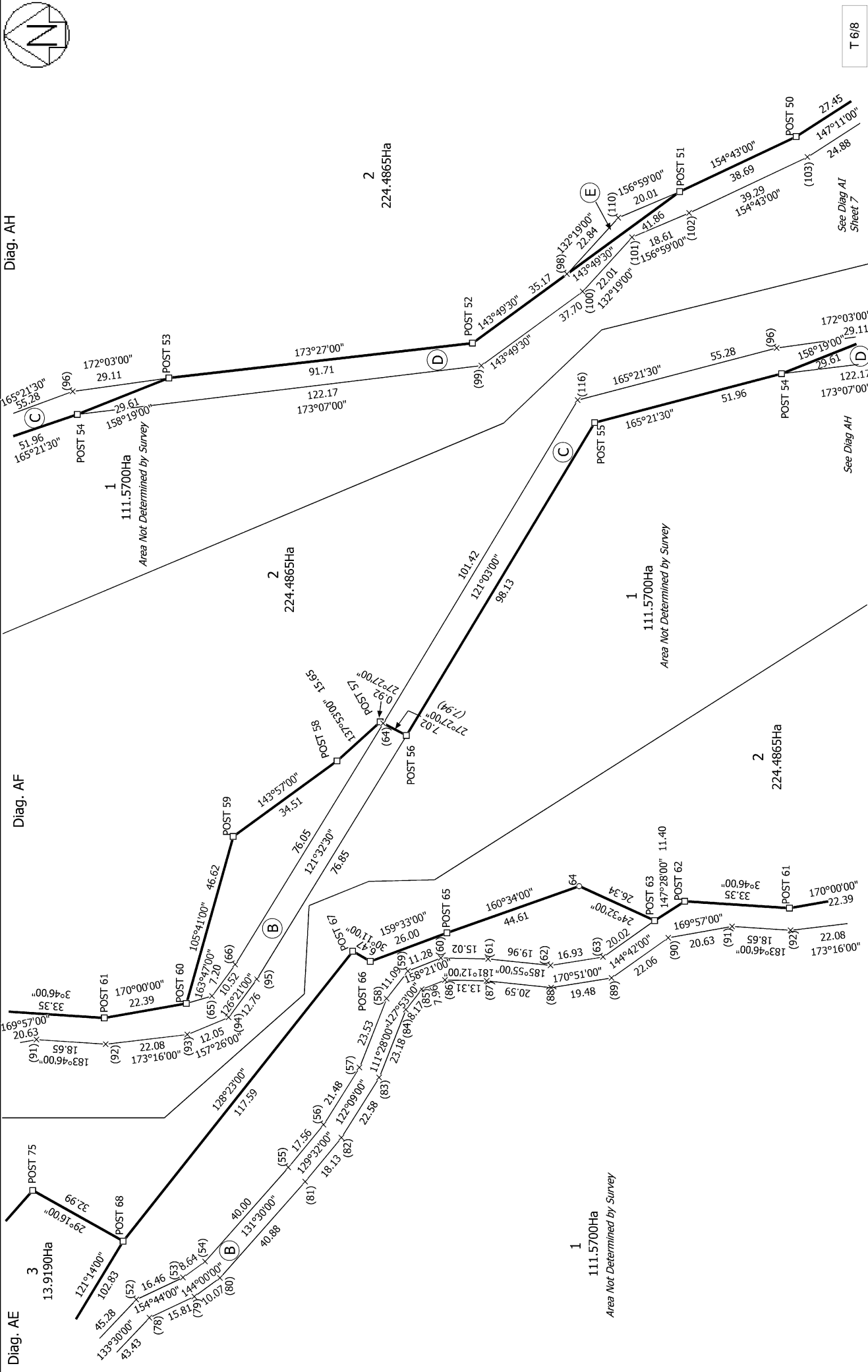
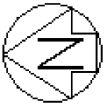


T 5/8

Land District: Wellington
 Digitally Generated Plan
 Generated on: 02/11/2023 2:59pm Page 40 of 43

Lots 1 - 5 Being a Subdivision of Part Retaruke 4C and Lot 2 DP 316976
 Surveyor: Michael Philip Proutie
 Firm: Foresight Surveying Limited
 Date of Survey: 31/08/2022

Record of Survey
 DP 569497
 Deposited on: 11/10/2023



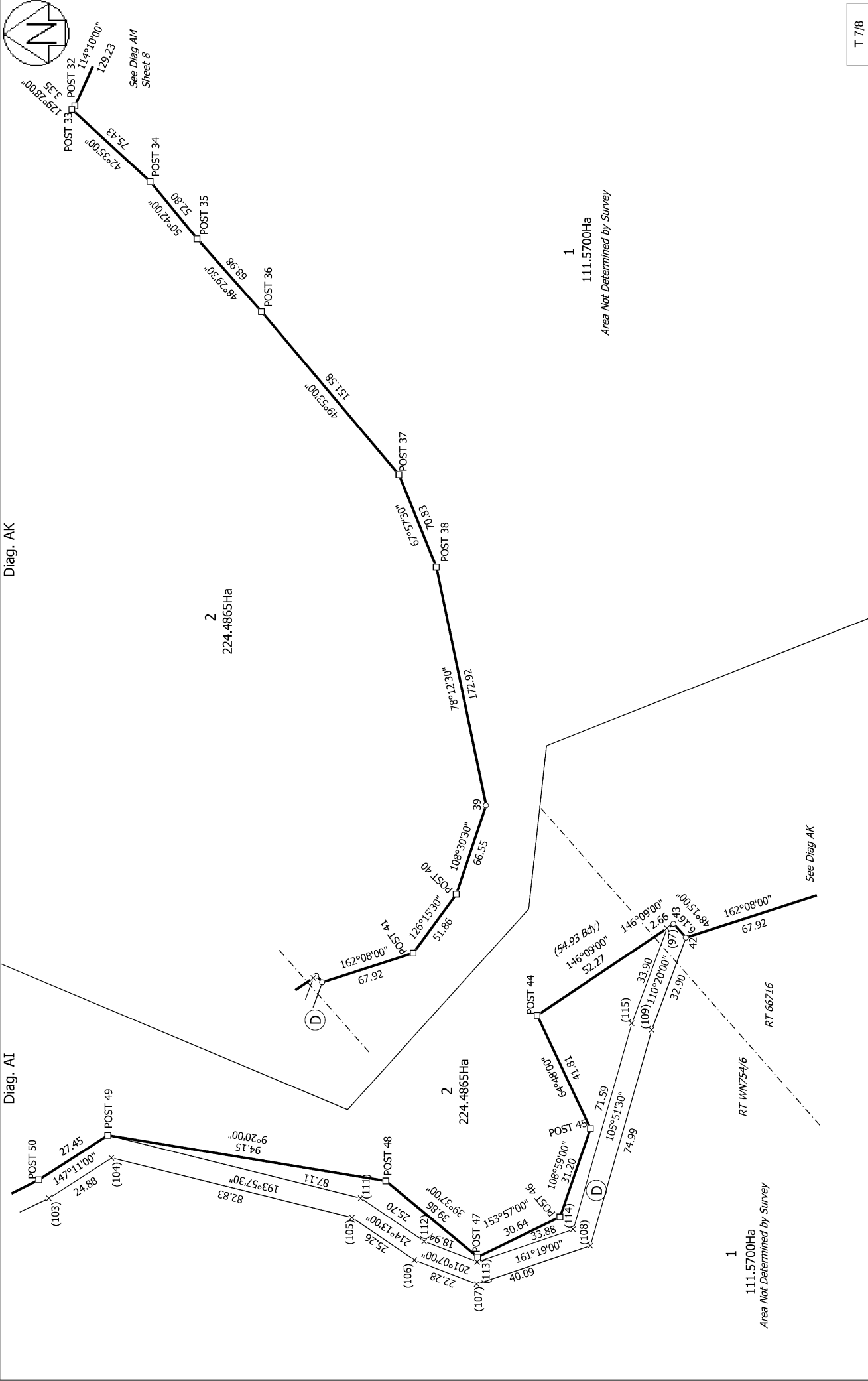
T 6/8

Record of Survey
DP 569497
Deposited on: 11/10/2023

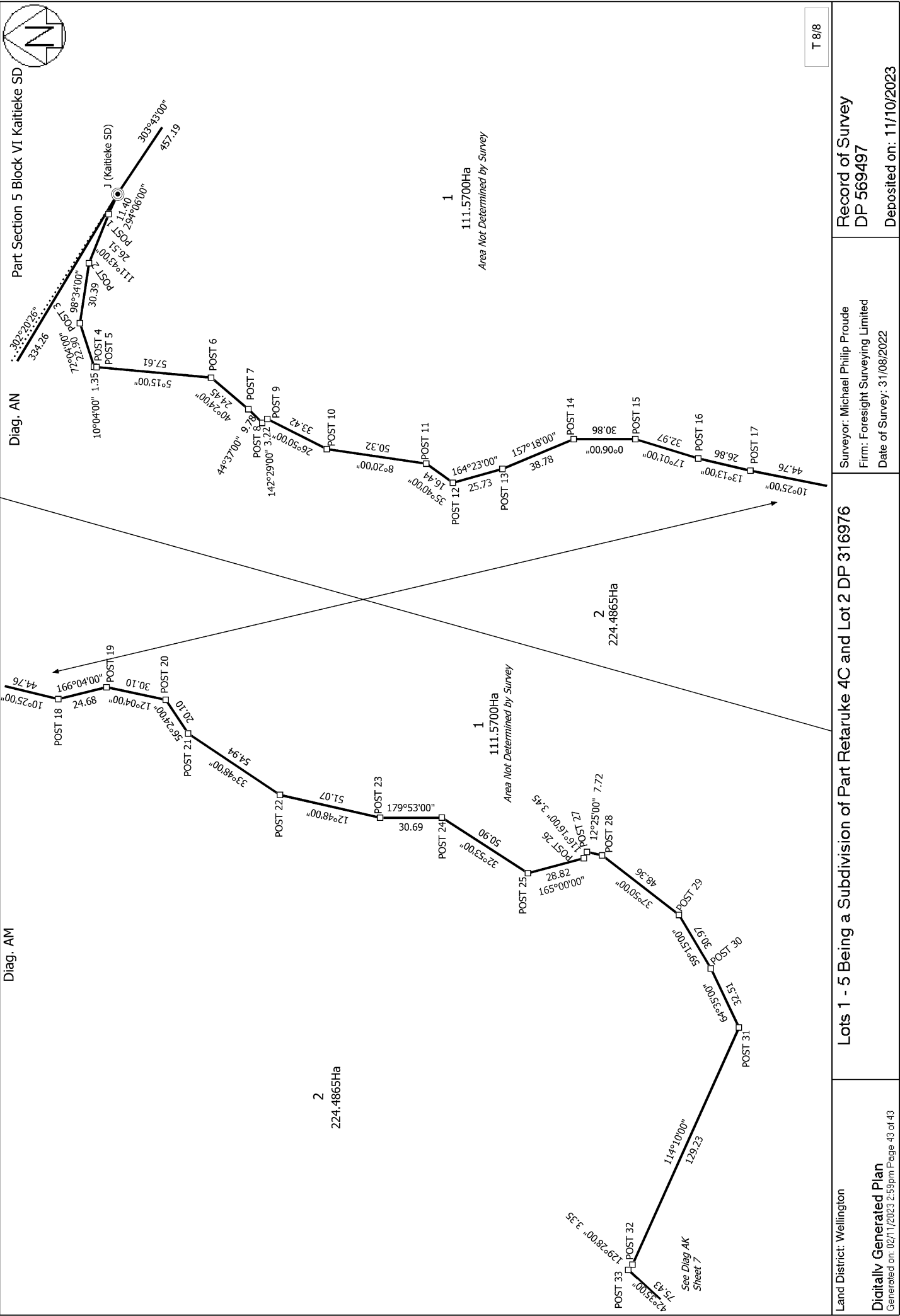
Surveyor: Michael Philip Proude
Firm: Foresight Surveying Limited
Date of Survey: 31/08/2022

Lots 1 - 5 Being a Subdivision of Part Retaruke 4C and Lot 2 DP 316976

Land District: Wellington
Digitally Generated Plan
Generated on: 02/11/2023 2:59pm Page 41 of 43



T 7/8	Record of Survey DP 569497	Deposited on: 11/10/2023
Surveyor: Michael Philip Proude Firm: Foresight Surveying Limited Date of Survey: 31/08/2022	Lots 1 - 5 Being a Subdivision of Part Retaruke 4C and Lot 2 DP 316976	
Land District: Wellington	Digitally Generated Plan Generated on: 02/11/2023 2:59pm Page 42 of 43	



T 8/8

<p>Land District: Wellington</p> <p>Digitally Generated Plan</p> <p>Generated on: 02/11/2023 2:59pm Page 43 of 43</p>	<p>Lots 1 - 5 Being a Subdivision of Part Retaruke 4C and Lot 2 DP 316976</p>	<p>Surveyor: Michael Philip Proudle Firm: Foresight Surveying Limited Date of Survey: 31/08/2022</p>	<p>Record of Survey DP 569497</p> <p>Deposited on: 11/10/2023</p>
--	--	--	--