



# Record of Survey - DP 569058

---

**Survey Number** DP 569058  
**Surveyor Reference** CH01049 - 47 Gilby Steet  
**Surveyor** Rex Julian Cunningham  
**Survey Firm** Fraser Thomas Ltd (Auckland)  
**Surveyor Declaration** I Rex Julian Cunningham, being a licensed cadastral surveyor, certify that--  
(a) this dataset provided by me and its related survey are accurate, correct and in accordance with the Cadastral Survey Act 2002 and Cadastral Survey Rules 2021; and  
(b) the survey was undertaken by me or under my personal direction.  
Declared on 11 May 2022 08:43 AM

---

## Survey Details

<b>Dataset Description</b>	LOT 1 BEING DEFINITION OF PART RURAL SECTION 26		
<b>Purpose</b>	LT Subdivision		
<b>Status</b>	Deposited	<b>Type</b>	Survey
<b>Land District</b>	Canterbury	<b>Survey Class</b>	Class A
<b>Meridional Circuit</b>	Mount Pleasant 2000	<b>Vertical Datum</b>	None

---

## Survey Dates

<b>Surveyed Date</b>	13/10/2021	<b>Certified Date</b>	11/05/2022
<b>Submitted Date</b>	11/05/2022 08:43:00	<b>Survey Approval Date</b>	11/05/2022
<b>Deposit Date</b>	16/10/2023		

---

## Referenced Surveys

Survey Number	Land District	Bearing Correction
A 9433	Canterbury	0°00'00"
DP 76563	Canterbury	0°00'00"
SO 19508	Canterbury	0°00'00"
A 4973	Canterbury	0°00'00"
A 8307	Canterbury	0°00'00"
DP 7044	Canterbury	-0°00'33"
SO 20248	Canterbury	0°00'00"
SO 416561	Canterbury	0°00'00"
DP 473692	Canterbury	0°00'00"
SO 479618	Canterbury	0°00'00"

---

## Territorial Authorities

Christchurch City

---

## Comprised In

RT CB373/258 Ltd



# Record of Survey - DP 569058

---

## Created Parcels

Parcels	Parcel Intent	Area	RT Reference
Lot 1 Deposited Plan 569058	Fee Simple Title	0.0459 Ha	1025071
<b>Total Area</b>		<u>0.0459 Ha</u>	

# Mark and Vector

Survey Number DP 569058

Meridional Circuit Mount Pleasant 2000

From	To	Code	Bearing	Adpt Surv	Bearing Correction	Distance	Adpt Surv	Class
IS IV DP 76563	PEG I DP 9981	ob1	179°40'30"	A DP 9981	0°00'00"	7.12 A	DP 9981	
IT IV SO 19132	IS IV DP 76563	ob0	359°42'35"	M		45.05 M		
IS IV DP 76563	MA 14 DP 473692	ob2	269°14'00"	A DP 473692	0°00'00"	28.29 A	DP 473692	
MA 14 DP 473692	MA 13 DP 473692	ob3	269°21'30"	A DP 473692	0°00'00"	4.02 A	DP 473692	
MA 13 DP 473692	MA 12 DP 473692	ob4	269°21'30"	M		14.37 M		
MA 12 DP 473692	RN V SO 416561	ob6	269°21'30"	M		15.70 M		
RN V SO 416561	IT IV SO 19508	ob8	250°29'00"	A SO 416561	0°00'00"	22.78 A	SO 416561	
IT IV SO 19508	IT I SO 20248	ob12	179°37'00"	A SO 20248	0°00'00"	100.76 A	SO 20248	
IT I SO 20248	IT II SO 19351	ob41	179°37'00"	A SO 20248	0°00'00"	18.12 A	SO 20248	
IT II SO 19351	RN I SO 416561	ob16	252°27'30"	A SO 416561	0°00'00"	12.82 A	SO 416561	
RN I SO 416561	NAIL 1 SO 479618	ob17	89°10'00"	A SO 479618	0°00'00"	10.46 A	SO 479618	
NAIL 1 SO 479618	IT DP 10805	ob18	88°37'10"	M		85.48 M		
IT DP 10805	IT V DP 76563	ob23	359°42'35"	M		54.84 M		
IT V DP 76563	IT IV SO 19132	ob24	359°42'35"	M		29.02 M		
IT IV SO 19508	IP I DP 7044	ob13	359°37'00"	A SO 19508	0°00'00"	36.02 A	SO 19508	
IP I DP 7044	PEG V DP 7044	ob25	179°34'27"	A DP 7044	0°00'00"	35.73 A	DP 7044	
PEG V DP 7044	PEG I DP 9981	ob26	89°19'27"	A DP 7044	0°00'00"	83.86 A	DP 7044	
PEG I DP 9981	PEG VI A 9433	ob56	224°29'42"	A DP 7044	0°00'00"	4.34 A	A 9433	
PEG VI A 9433	PEG 28 DP 569058	ob29	269°19'27"	C		24.04 C		
PEG 28 DP 569058	PEG 29 DP 569058	ob31	179°11'00"	A A 9433	0°00'00"	18.35 A	A 9433	Class A
PEG 29 DP 569058	DISK 30 DP 569058	ob33	179°13'00"	A A 4973	0°00'00"	18.11 A	A 4973	Class A
DISK 30 DP 569058	PEG IV A 8307	ob34	90°20'00"	A A 4973	0°00'00"	23.74 A	A 4973	
PEG IV A 8307	PEG (38) DP 76563	ob36	179°42'35"	A DP 76563	0°00'00"	24.96 A	A 4973	
PEG (38) DP 76563	IT V DP 76563	ob28	123°14'15"	A DP 76563	0°00'00"	3.67 A	A 8307	
PEG VI A 9433	PEG V A 9433	ob30	179°42'35"	A DP 76563	0°00'00"	18.75 A	A 9433	
PEG V A 9433	PEG IV A 8307	ob55	179°42'35"	A DP 76563	0°00'00"	18.11 A	A 4973	
DISK 30 DP 569058	PEG V A 8307	ob35	270°20'00"	A A 8307	0°00'00"	12.47 C		Class A
PEG V A 8307	PEG VI A 8307	ob37	171°12'15"	A A 8307	0°00'00"	27.60 A	A 8307	
PEG VI A 8307	IT V DP 76563	ob39	89°52'15"	A A 8307	0°00'00"	35.20 A	A 8307	
IT I SO 20248	DISK (46) SO 20248	ob42	34°08'00"	A SO 20248	0°00'00"	14.21 A	SO 20248	

# Mark and Vector

Survey Number DP 569058

Meridional Circuit Mount Pleasant 2000

From	To	Code	Bearing	Adpt Surv	Bearing Correction	Distance	Adpt Surv	Class
PEG 28 DP 569058	PEG 41 DP 569058	ob32	269°19'27"	C		12.47 C		Class A
PEG 41 DP 569058	UNMK 48 DP 569058	ob40	269°19'27"	C		36.23 C		
UNMK 48 DP 569058	DISK (46) SO 20248	ob43	179°37'00"	C		86.30 C		
PEG V A 8307	PEG 49 DP 569058	ob38	270°20'00"	C		0.32 C		Class A
PEG 49 DP 569058	PEG 41 DP 569058	ob44	359°43'00"	C		36.23 C		Class A
RN V SO 416561	MA 9 DP 473692	ob9	269°21'30"	M		20.10 M		
RN V SO 416561	IS 4 DP 569058	ob10	131°54'00"	M		25.83 M		
RN V SO 416561	MA 1	ob11	282°58'30"	M		34.71 M		
MA 1	IS IV DP 76563	ob45	73°19'30"	M		29.81 M		
MA 1	NAIL 2 DP 569058	ob46	178°55'00"	M		19.41 M		
NAIL 2 DP 569058	IS 3 DP 569058	ob50	209°04'00"	M		18.22 M		
IS 3 DP 569058	IS 4 DP 569058	ob52	346°42'00"	M		26.59 M		
IS 3 DP 569058	PEG 49 DP 569058	ob53	217°39'00"	M		3.77 M		
IS 3 DP 569058	DISK 30 DP 569058	ob54	106°17'00"	M		10.93 M		
NAIL 2 DP 569058	PEG 29 DP 569058	ob51	122°14'00"	M		1.65 M		
MA 1	PEG 41 DP 569058	ob47	259°11'00"	M		11.16 M		
MA 1	PEG 28 DP 569058	ob48	142°12'00"	M		2.46 M		
MA 1	MA 13 DP 473692	ob49	335°15'00"	M		8.95 M		
MA 13 DP 473692	IS IV DP 76563	ob5	89°15'10"	M		32.31 M		
NAIL 1 SO 479618	NAIL 1 DP 557392	ob19	173°25'30"	M		72.94 M		
NAIL 1 DP 557392	MA IX DP 474684	ob57	187°56'00"	M		34.29 M		
NAIL 1 SO 479618	MA IX DP 474684	ob21	178°03'00"	M		106.48 M		
NAIL 1 SO 479618	DISK (46) SO 20248	ob22	15°58'00"	M		34.94 M		
NAIL 1 SO 479618	RN II SO 416561	ob20	351°39'00"	M		18.14 M		
IS IV SO 416561	NAIL 1 SO 479618	ob58	337°10'00"	M		29.61 M		
IT II SO 19351	RN II SO 416561	ob14	342°37'30"	A SO 416561	0°00'00"	14.89 A SO 416561		
IT II SO 19351	IS IV SO 416561	ob15	162°37'30"	A SO 416561	0°00'00"	32.48 A SO 416561		

# Mark and Vector

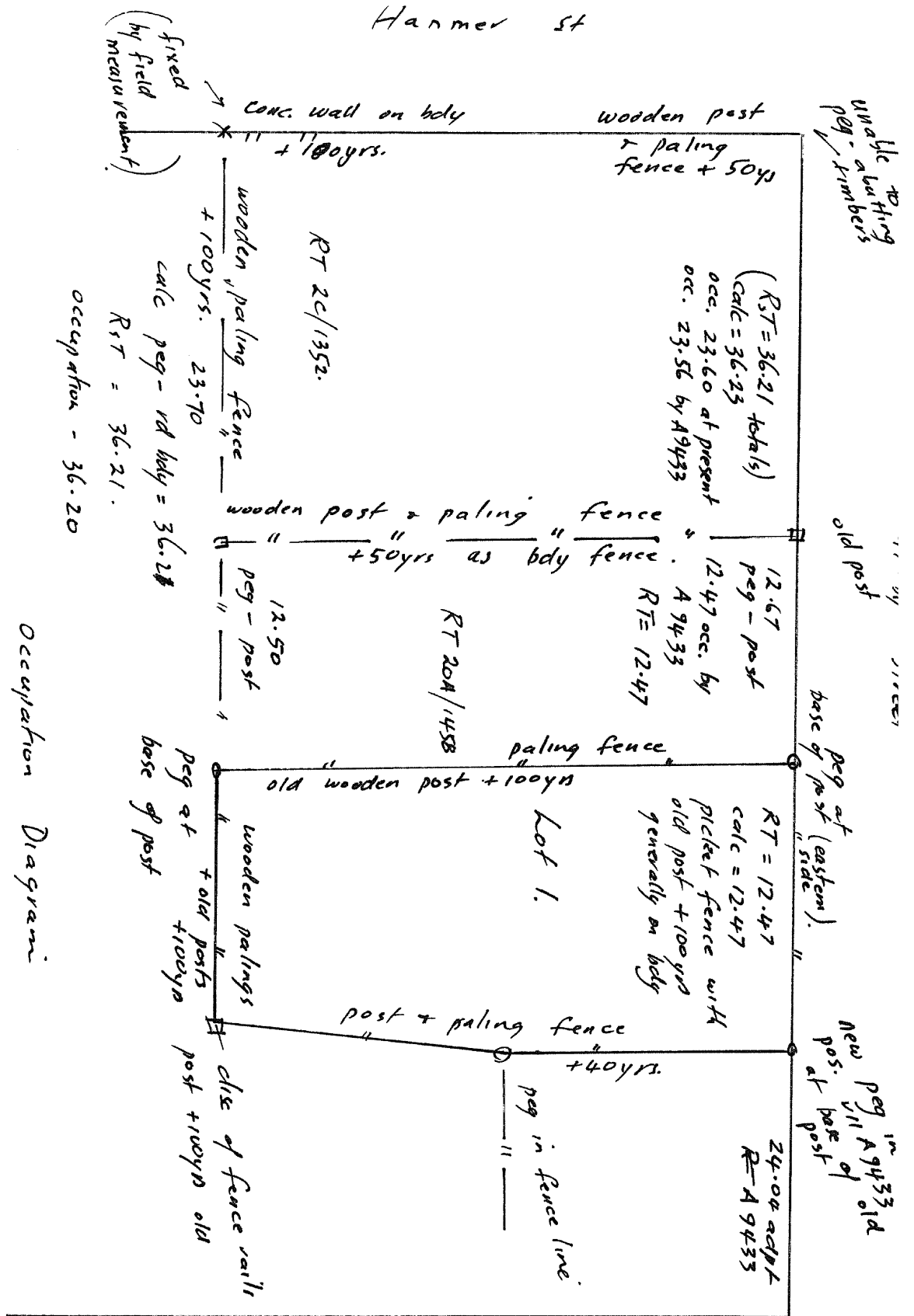
Survey Number DP 569058

Meridional Circuit Mount Pleasant 2000

From	To	Code	Bearing	Adpt Surv	Bearing Correction	Distance	Adpt Surv	Class
PEG V DP 7044	UNMK 48 DP 569058	ob27	110°08'00"	C		8.61 C		
RN V SO 416561	UNMK 48 DP 569058	ob7	232°23'00"	C		16.89 C		

Mark Name	Mark Condition	Description
DISK (46) SO 20248		In Conc Post
IS 3 DP 569058		0.2d
IS 4 DP 569058		0.1d
IS IV DP 76563		Between Kerb & DWY
IT DP 10805		0.1d
IT IV SO 19132		Fl
IT V DP 76563		0.15d
MA 1		Existing MA in TK
MA 12 DP 473692		TK
MA 13 DP 473692		TK
MA 9 DP 473692		FP
MA IX DP 474684		TK
NAIL 1 DP 557392		TK
NAIL 1 SO 479618		FP
NAIL 2 DP 569058		In DWY
PEG 28 DP 569058		in position of VII A9433
PEG 29 DP 569058		in poistion of peg III A9433
RN I SO 416561		TK
RN II SO 416561		in Cobbles
RN V SO 416561		TK
IT I SO 20248	Destroyed	
IT II SO 19351	Destroyed	
IT IV SO 19508	Destroyed	
MA 14 DP 473692	Searched For and Not Found	

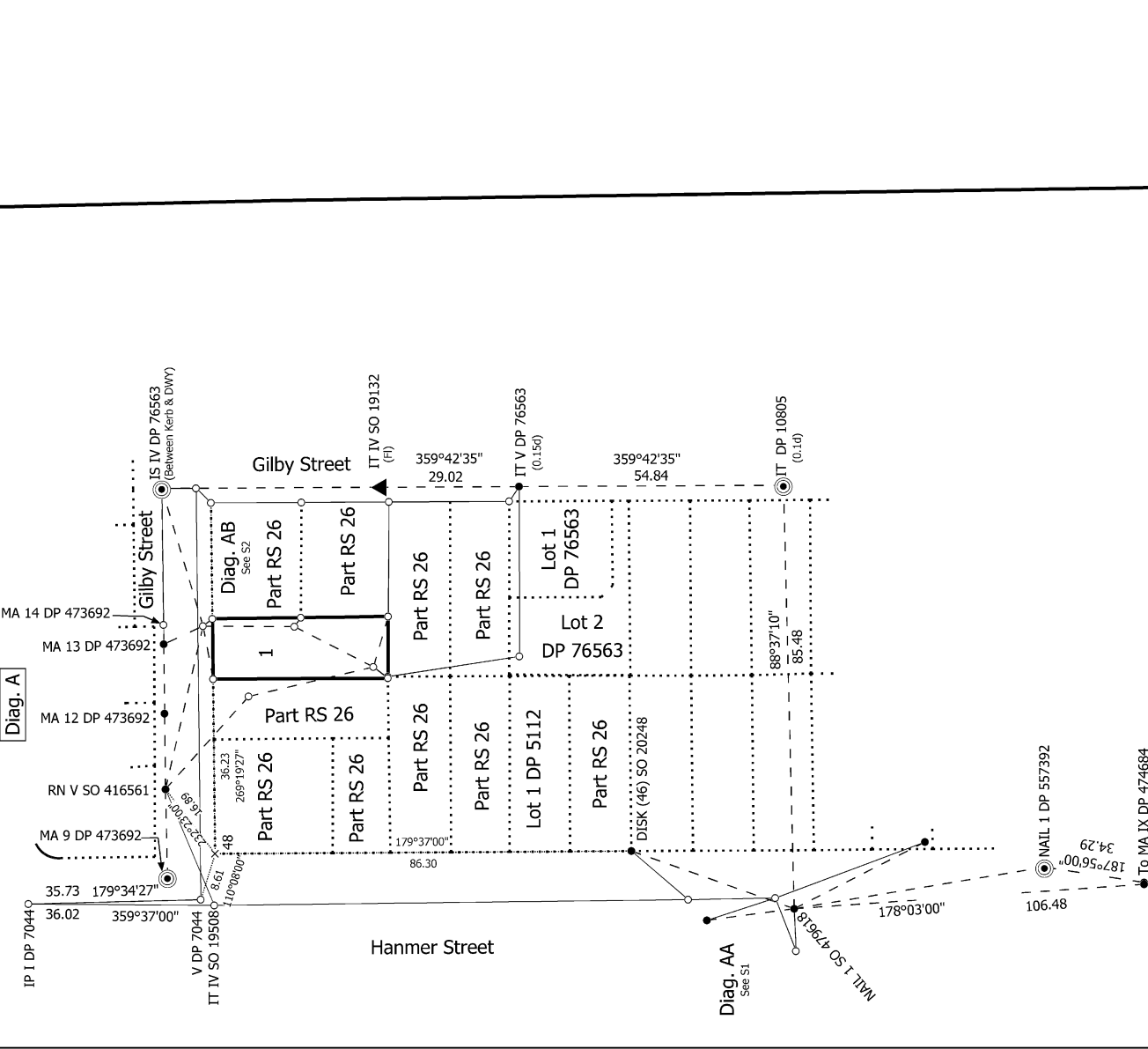
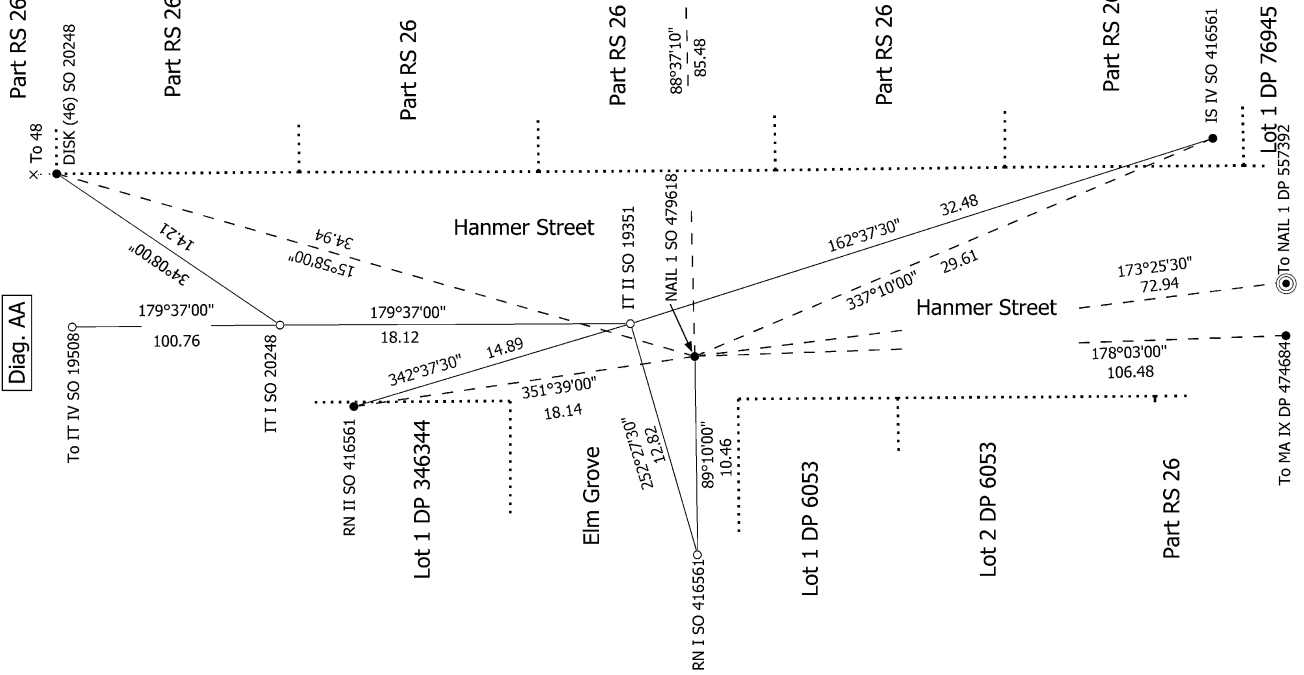
\*\*\* End of Report \*\*\*



Occupation Diagram

not to scale.

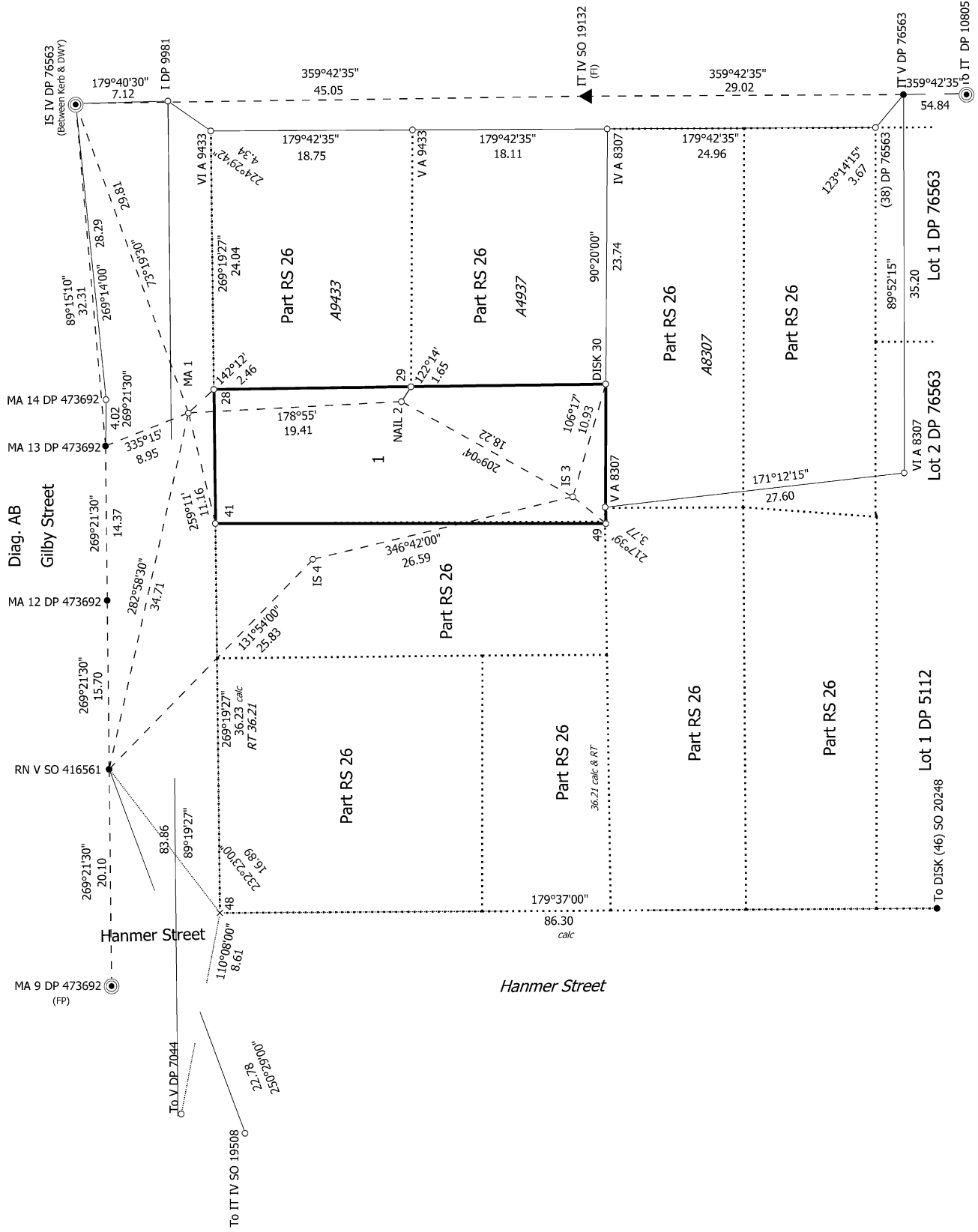
WSC



S 1/2

Record of Survey DP 569058	Surveyor: Rex Julian Cunningham Firm: Fraser Thomas Ltd (Auckland) Date of Survey: 13/10/2021	Land District: Canterbury	Deposited on: 16/10/2023
-------------------------------	---	---------------------------	--------------------------

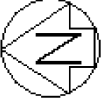
**LOT 1 BEING DEFINITION OF PART RURAL SECTION 26**



S 2/2

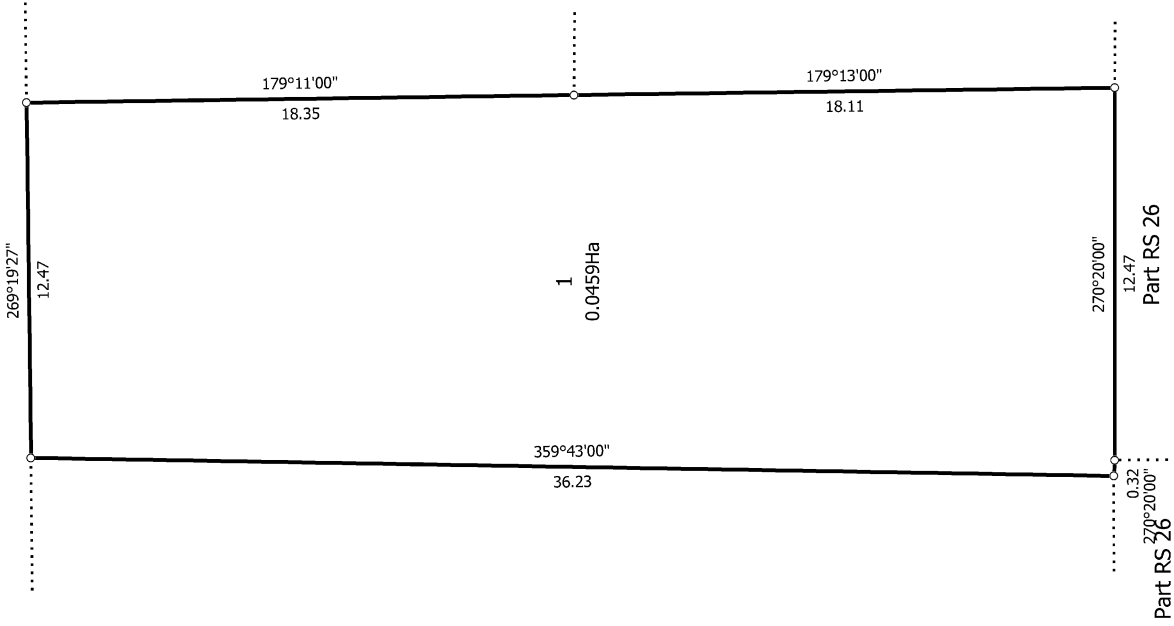
<p>Land District: Canterbury</p> <p><b>Digitally Generated Plan</b></p> <p>Generated on: 20/12/2023 1:30pm Page 8 of 9</p>	<p><b>LOT 1 BEING DEFINITION OF PART RURAL SECTION 26</b></p>	<p>Surveyor: Rex Julian Cunningham          Firm: Fraser Thomas Ltd (Auckland)          Date of Survey: 13/10/2021</p>	<p>Record of Survey  <b>DP 569058</b>          Deposited on: 16/10/2023</p>
--	---	--	---





Diag. A

GILBY STREET



T 1/1

LOT 1 BEING DEFINITION OF PART RURAL SECTION 26

Record of Survey  
DP 569058

Deposited on: 16/10/2023

Surveyor: Rex Julian Cunningham  
Firm: Fraser Thomas Ltd (Auckland)  
Date of Survey: 13/10/2021

Land District: Canterbury

**Digitally Generated Plan**

Generated on: 20/12/2023 1:30pm Page 9 of 9