

Record of Survey - DP 565532

Survey Number	DP 565532
Surveyor Reference	8164 - Thornton
Surveyor	Rhys James Kelly
Survey Firm	RPC Ltd Registered Surveyors (Mt Maunganui)
Surveyor Declaration	I Rhys James Kelly, being a licensed cadastral surveyor, certify that-- (a) this dataset provided by me and its related survey are accurate, correct and in accordance with the Cadastral Survey Act 2002 and Cadastral Survey Rules 2021; and (b) the survey was undertaken by me or under my personal direction. Declared on 07 Sep 2022 02:37 PM

Survey Details

Dataset Description	Lots 1 - 3 being a Boundary Adjustment of Lots 1 & 2 DP 453882, Lot 1 DPS 47185 & Pt Section 10 BLK V Awaateatua SD		
Purpose	LT Subdivision		
Status	Deposited	Type	Survey
Land District	South Auckland	Survey Class	Class A
Meridional Circuit	Bay of Plenty 2000	Vertical Datum	None

Survey Dates

Surveyed Date	08/06/2022	Certified Date	07/09/2022
Submitted Date	07/09/2022 14:37:41	Survey Approval Date	07/09/2022
Deposit Date	18/03/2024		

Referenced Surveys

Survey Number	Land District	Bearing Correction
SO 53653	South Auckland	0°00'00"
SO 40648	South Auckland	0°00'00"
SO 47441	South Auckland	0°00'00"
DP 390818	South Auckland	0°00'00"
DP 453882	South Auckland	0°00'00"

Territorial Authorities

Whakatane District

Comprised In

RT SA44D/315
 RT 581837
 RT 581836

Created Parcels

Parcels	Parcel Intent	Area	RT Reference
Lot 1 Deposited Plan 565532	Fee Simple Title	7.9950 Ha	Multiple
Lot 2 Deposited Plan 565532	Fee Simple Title	33.6697 Ha	1010275
Lot 3 Deposited Plan 565532	Fee Simple Title Erosion	3.6539 Ha	1010276



Record of Survey - DP 565532

Created Parcels

Parcels	Parcel Intent	Area	RT Reference
	Erosion		
Total Area		<hr/> 45.3186 Ha	

Mark and Vector

Survey Number DP 565532

Meridional Circuit Bay of Plenty 2000

From	To	Code	Bearing	Adpt Surv	Bearing Correction	Distance	Adpt Surv	Class
IT 3 DP 453882	IS III SO 40648	ob0	94°25'40" M			218.28 M		
IT 3 DP 453882	IT 2 DP 453882	ob1	194°19'10" M			124.01 M		
IT 2 DP 453882	IT 1 DP 453882	ob14	107°45'00" M			240.70 M		
IT 1 DP 453882	IS III SO 40648	ob16	6°09'20" M			177.70 M		
IT 3 DP 453882	IT 18 DP 565532	ob2	308°39'20" M			195.73 M		
IT 18 DP 565532	IT 2 DP 453882	ob87	153°15'00" M			271.46 M		
IT 2 DP 453882	6863	ob15	137°09'40" M			343.15 M		
6863	IT 1 DP 453882	ob20	358°41'25" M			178.29 M		
6863	IT 2 DP 390818	ob21	98°34'45" A	DP 453882	0°00'00"	158.75 A	DP 453882	
IT 2 DP 390818	6864	ob113	107°24'10" A	DP 390818	0°00'00"	299.95 A	DP 390818	
IT 18 DP 565532	IS III SO 40648	ob88	110°34'50" M			395.73 M		
6863	IT XIV SO 40648	ob22	63°18'10" M			180.82 M		
IT XIV SO 40648	IS VII SO 47441	ob34	34°49'00" A	SO 53653	0°00'00"	98.50 A	SO 53653	
IS VII SO 47441	IT I SO 53653	ob28	342°20'50" A	SO 53653	0°00'00"	89.33 A	SO 53653	
IT I SO 53653	IT II SO 53653	ob29	316°32'50" A	SO 53653	0°00'00"	84.04 A	SO 53653	
IT II SO 53653	IT III SO 53653	ob30	285°32'00" A	SO 53653	0°00'00"	111.54 A	SO 53653	
IT III SO 53653	IS III SO 40648	ob31	328°04'00" A	SO 53653	0°00'00"	19.78 A	SO 53653	
IT 3 DP 453882	IT IX SO 47441	ob3	293°29'45" A	DP 453882	0°00'00"	638.60 A	DP 453882	
IT IX SO 47441	IT 2 DP 453882	ob23	124°01'45" A	DP 453882	0°00'00"	669.66 A	DP 453882	
IT XIV SO 40648	PEG IVD SO 53653	ob35	30°01'00" A	SO 53653	0°00'00"	28.61 A	SO 53653	
PEG IVD SO 53653	PEG IVC SO 53653	ob32	29°27'00" A	SO 53653	0°00'00"	3.02 A	SO 53653	Class B
PEG IVC SO 53653	PEG IV SO 53653	ob58	23°57'00" A	SO 53653	0°00'00"	17.25 A	SO 53653	Class B
PEG IV SO 53653	PEG IVB SO 53653	ob59	23°57'00" A	SO 53653	0°00'00"	2.82 A	SO 53653	Class A
PEG IVB SO 53653	PEG IG SO 53653	ob60	28°55'40" A	SO 53653	0°00'00"	55.41 A	SO 53653	Class A
PEG IG SO 53653	PEG IC SO 53653	ob61	12°27'20" A	SO 53653	0°00'00"	51.65 A	SO 53653	Class A
PEG IC SO 53653	PEG ID SO 53653	ob62	111°42'30" A	SO 53653	0°00'00"	20.26 A	SO 53653	Class B
PEG ID SO 53653	PEG IE SO 53653	ob63	192°27'20" A	SO 53653	0°00'00"	51.31 A	SO 53653	Class B
PEG IE SO 53653	IS VII SO 47441	ob64	245°06'00" A	SO 53653	0°00'00"	14.75 A	SO 53653	
IT IX SO 47441	PEG (1) SO 47441	ob24	179°15'00" A	SO 47441	0°00'00"	32.66 A	SO 47441	
PEG (1) SO 47441	PEG IIIA DPS 11579	ob37	180°02'10" A	SO 47441	0°00'00"	440.00 A	SO 47441	Class B
PEG IIIA DPS 11579	PEG VIIIA DPS 11579	ob33	102°36'00" A	SO 47441	0°00'00"	617.58 A	SO 47441	Class B

Mark and Vector

Survey Number DP 565532

Meridional Circuit Bay of Plenty 2000

From	To	Code	Bearing	Adpt Surv	Bearing Correction	Distance	Adpt Surv	Class
PEG VIIIA DPS 11579	PEG II SO 23176	ob36	102°36'00"	A SO 47441	0°00'00"	198.65 A	SO 47441	Class B
PEG II SO 23176	PEG (2) SO 40648	ob38	1°02'30"	A SO 40648	0°00'00"	184.29 A	SO 40648	Class B
PEG (2) SO 40648	PEG IVD SO 53653	ob39	108°12'40"	A SO 53653	0°00'00"	172.55 A	SO 53653	Class B
IS III SO 40648	DISK 9 DP 565532	ob6	214°51'30"	M		1.53 M		
DISK 9 DP 565532	DISK 8 DP 565532	ob44	286°34'15"	C		101.83 C		Class A
DISK 8 DP 565532	DISK 7 DP 565532	ob46	285°01'50"	C		121.04 C		Class A
DISK 7 DP 565532	IT 3 DP 453882	ob47	183°02'30"	M		42.38 M		
IT 3 DP 453882	DISK 8 DP 565532	ob4	84°45'30"	M		119.65 M		
DISK 7 DP 565532	DISK 6 DP 565532	ob48	194°57'00"	C		201.75 C		Class A
DISK 6 DP 565532	IT 2 DP 453882	ob49	30°31'00"	M		37.66 M		
DISK 6 DP 565532	DISK 5 DP 565532	ob50	100°16'30"	C		199.74 C		Class A
DISK 5 DP 565532	IT 1 DP 453882	ob51	95°51'00"	M		52.10 M		
DISK 5 DP 565532	DISK 4 DP 565532	ob52	103°09'10"	C		54.63 C		Class A
DISK 4 DP 565532	IT 1 DP 453882	ob53	349°09'00"	M		7.25 M		
DISK 4 DP 565532	DISK 3 DP 565532	ob54	75°04'30"	C		6.69 C		Class A
DISK 3 DP 565532	IT 1 DP 453882	ob55	304°36'00"	M		9.51 M		
DISK 3 DP 565532	DISK 2 DP 565532	ob56	100°03'10"	C		21.55 C		Class A
DISK 2 DP 565532	IT 1 DP 453882	ob40	287°30'00"	M		30.46 M		
DISK 2 DP 565532	DISK 1 DP 565532	ob41	104°55'10"	C		96.86 C		Class A
DISK 1 DP 565532	IT 1 DP 453882	ob42	285°32'10"	M		127.30 M		
IS III SO 40648	IT 20 DP 565532	ob7	122°56'50"	M		208.04 M		
IT 20 DP 565532	IT 21 DP 565532	ob91	73°51'40"	M		147.09 M		
IT 21 DP 565532	IS II SO 47441	ob95	208°52'30"	M		82.78 M		
IS II SO 47441	IT 2 DP 453882	ob100	274°31'15"	M		525.83 M		
DISK 1 DP 565532	PEG IV SO 53653	ob43	106°42'00"	C		68.67 C		Class A

Mark and Vector

Survey Number DP 565532

Meridional Circuit Bay of Plenty 2000

From	To	Code	Bearing	Adpt Surv	Bearing Correction	Distance	Adpt Surv	Class
IS III SO 40648	DISK 13 DP 565532	ob8	116°47'20"	M		182.50 M		
DISK 13 DP 565532	PEG 14 DP 565532	ob57	144°54'30"	C		13.87 C		Class A
IS III SO 40648	DISK 12 DP 565532	ob9	112°20'30"	M		164.57 M		
DISK 12 DP 565532	DISK 13 DP 565532	ob66	151°30'00"	C		22.41 C		Class A
IS III SO 40648	DISK 11 DP 565532	ob10	106°56'40"	M		158.35 M		
DISK 11 DP 565532	DISK 12 DP 565532	ob67	177°25'00"	C		16.42 C		Class A
IS III SO 40648	DISK 10 DP 565532	ob11	108°24'00"	M		73.96 M		
DISK 10 DP 565532	DISK 11 DP 565532	ob68	105°40'10"	C		84.44 C		Class A
DISK 9 DP 565532	DISK 10 DP 565532	ob45	107°16'10"	C		74.41 C		Class A
IT IX SO 47441	IS VIII SO 47441	ob25	107°08'30"	A SO 47441	0°00'00"	313.45 A SO 47441		
IS VIII SO 47441	IT VI SO 47441	ob69	106°52'00"	A SO 47441	0°00'00"	527.57 A SO 47441		
IT VI SO 47441	IS V SO 47441	ob70	98°29'00"	A SO 47441	0°00'00"	268.28 A SO 47441		
IS V SO 47441	IS VII SO 47441	ob72	199°33'00"	A SO 47441	0°00'00"	190.28 A SO 47441		
IT VI SO 47441	IS III SO 40648	ob71	182°30'00"	A SO 53653	0°00'00"	26.10 A SO 53653		
IT IX SO 47441	UNMK (1) SO 47441	ob26	1°01'20"	A DP 453882	0°00'00"	27.35 A DP 453882		
UNMK (1) SO 47441	PEG (1) SO 47441	ob74	180°02'10"	A SO 47441	0°00'00"	60.00 A SO 47441		Class BD
PEG IIIA SO 53653	PEG 1 DP 453882	ob76	181°01'40"	A SO 53653	0°00'00"	24.00 A SO 53653		
PEG 1 DP 453882	IT III SO 53653	ob77	127°44'00"	A SO 53653	0°00'00"	12.79 A SO 53653		
IS III SO 40648	PEG IV SO 40648	ob12	93°59'40"	A SO 40648	0°00'00"	176.99 A SO 40648		
PEG IV SO 40648	PEG V SO 40648	ob78	106°04'30"	A SO 40648	0°00'00"	244.78 A SO 40648		
PEG V SO 40648	UNMK (2) SO 40648	ob79	173°27'00"	A SO 40648	0°00'00"	18.74 C		Class B
UNMK (2) SO 40648	PEG XII SO 40648	ob81	173°27'00"	A SO 40648	0°00'00"	6.43 C		
PEG XII SO 40648	IS XIII SO 40648	ob83	246°47'40"	A SO 40648	0°00'00"	220.84 A SO 40648		
IS XIII SO 40648	IT XIV SO 40648	ob82	218°39'30"	A SO 40648	0°00'00"	104.41 A SO 40648		
PEG V SO 40648	UNMK 35 DP 565532	ob80	353°27'00"	A SO 40648	0°00'00"	14.60 C		Class BD
PEG IE SO 53653	PEG IF SO 53653	ob65	208°55'40"	A SO 53653	0°00'00"	3.80 A SO 53653		Class A

Mark and Vector

Survey Number DP 565532

Meridional Circuit Bay of Plenty 2000

From	To	Code	Bearing	Adpt Surv	Bearing Correction	Distance	Adpt Surv	Class
PEG IF SO 53653	IS VII SO 47441	ob84	255°59'00"	A SO 53653	0°00'00"	11.89 A	SO 53653	
IT 20 DP 565532	PEG IC SO 53653	ob92	115°07'30"	M		37.41 M		
PEG 14 DP 565532	PEG 15 DP 565532	ob98	163°52'00"	C		22.10 C		Class A
PEG 15 DP 565532	PEG 16 DP 565532	ob97	114°55'00"	C		17.80 C		Class A
IS V SO 47441	IS IV SO 44741	ob73	106°24'00"	A SO 47441	0°00'00"	174.95 A	SO 47441	
IS IV SO 44741	IS III SO 44741	ob102	146°15'00"	A SO 47441	0°00'00"	81.01 A	SO 47441	
IS III SO 44741	IS II SO 47441	ob103	265°56'00"	A SO 47441	0°00'00"	203.99 A	SO 47441	
IS II SO 47441	IS I SO 44741	ob101	217°48'30"	A SO 47441	0°00'00"	128.59 A	SO 47441	
IS I SO 44741	IT XIV SO 40648	ob104	241°35'00"	A SO 47441	0°00'00"	57.47 A	SO 47441	
PEG IF SO 53653	UNMK 22 DP 565532	ob85	57°47'00"	C		12.76 C		Class B
UNMK 22 DP 565532	UNMK 23 DP 565532	ob105	64°30'30"	C		61.05 C		Class B
UNMK 23 DP 565532	UNMK 24 DP 565532	ob106	66°01'00"	C		27.82 C		Class B
UNMK 24 DP 565532	UNMK 25 DP 565532	ob107	54°52'00"	C		41.10 C		Class B
UNMK 25 DP 565532	UNMK 26 DP 565532	ob108	46°49'00"	C		11.77 C		Class B
UNMK 26 DP 565532	UNMK 27 DP 565532	ob109	51°23'00"	C		12.63 C		Class B
UNMK 27 DP 565532	UNMK 28 DP 565532	ob110	68°22'00"	C		10.33 C		Class B
UNMK 28 DP 565532	UNMK 29 DP 565532	ob111	72°50'00"	C		12.26 C		Class B
UNMK 29 DP 565532	UNMK (2) SO 40648	ob112	90°21'00"	C		34.93 C		Class B
IT 18 DP 565532	UNMK 32 DP 565532	ob89	96°06'15"	C		212.13 C		
IT 18 DP 565532	UNMK 33 DP 565532	ob90	299°37'00"	C		152.87 C		
IT IX SO 47441	UNMK 33 DP 565532	ob27	100°43'25"	C		305.23 C		
IT 3 DP 453882	UNMK 32 DP 565532	ob5	30°13'20"	C		115.38 C		
IT 1 DP 453882	PEG 2 DP 453882	ob17	80°30'00"	A DP 453882	0°00'00"	16.67 A	DP 453882	
PEG 2 DP 453882	PEG 1 DP 453882	ob114	1°01'40"	A SO 53653	0°00'00"	164.99 A	SO 53653	
PEG 14 DP 565532	IS III SO 40648	ob99	298°42'30"	M		194.84 M		

Mark and Vector

Survey Number DP 565532

Meridional Circuit Bay of Plenty 2000

From	To	Code	Bearing	Adpt Surv	Bearing Correction	Distance	Adpt Surv	Class
IT 1 DP 453882	PEG 15 DP 565532	ob18	72°29'30"	M		205.61 M		
IT 1 DP 453882	PEG 16 DP 565532	ob19	75°38'00"	M		219.08 M		
PEG 16 DP 565532	AD 17 DP 565532	ob96	102°03'00"	C		16.16 C		Class A
AD 17 DP 565532	PEG IC SO 53653	ob115	189°11'00"	C		3.35 C		Class A
IT 21 DP 565532	AD 17 DP 565532	ob93	243°26'30"	M		119.51 M		
PEG IIIA SO 53653	DISK 9 DP 565532	ob75	185°47'00"	C		16.37 C		Class B
UNMK (1) SO 40648	PEG IIIA SO 53653	ob116	181°02'30"	A SO 40648	0°00'00"	21.12 A SO 40648		Class BD
IT 21 DP 565532	UNMK 30 DP 565532	ob94	45°37'00"	C		57.24 C		
UNMK 35 DP 565532	UNMK (2) SO 40648	ob86	353°27'00"	A SO 40648	0°00'00"	22.99 C		Class BD
IS III SO 40648	UNMK SO 47441	ob13	1°28'50"	A DP 453882	0°00'00"	66.05 A DP 453882		
UNMK SO 47441	UNMK (1) SO 40648	ob117	181°02'30"	A SO 40648	0°00'00"	29.88 C		Class BD

Mark Name	Mark Condition	Description
6863		IT
6864		Stainless Steel Pin Set in existing 5cm Diameter Iron Tube Set Flush in Concrete Block.
AD 17 DP 565532		Top of Post
DISK 1 DP 565532		Top of Post
DISK 10 DP 565532		Top of Post
DISK 11 DP 565532		Top of Post
DISK 12 DP 565532		Top of Post
DISK 13 DP 565532		Top of Post
DISK 2 DP 565532		Top of Post
DISK 3 DP 565532		Top of Post
DISK 4 DP 565532		Top of Post
DISK 5 DP 565532		Top of Post
DISK 6 DP 565532		Top of Post
DISK 7 DP 565532		Top of Post
DISK 8 DP 565532		Top of Post
DISK 9 DP 565532		Top of Post
IS III SO 40648		1.6m north of fence, 300mm deep

Mark and Vector

Survey Number DP 565532

Meridional Circuit Bay of Plenty 2000

Mark Name	Mark Condition	Description
IT 1 DP 453882		5.5m south of fence, 300mm deep
IT 18 DP 565532		West of beach access track, 1m OS main track, 0.4m Deep
IT 2 DP 390818		12.3 NW lamp post
IT 2 DP 453882		10m east of fence, 300mm deep
IT 20 DP 565532		2.3m to convergence of retaining walls, 1.3m NTH of wall, 0.4m deep
IT 21 DP 565532		0.4 deep on small rise, 12.5m East of Tree
IT 3 DP 453882		8.7m east of fence and 2.5m north of fence, 300mm deep
IT IX SO 47441		1.2m deep in sand dunes.
IT XIV SO 40648		5.2m O/S EOS, 28.6m to NTH end of playground, off edge of dirt entrance
PEG (1) SO 47441		In sand dunes
PEG IC SO 53653		0.1d, 0.2m East of Fence
IT I SO 53653	Searched For and Not Found	Dug 1m, no signal metal detector, appears earthworks have been completed in the area

***** End of Report *****

Schedule / Memorandum

Land Registration District

South Auckland

Survey Number

LT 565532

Territorial Authority (the Council)

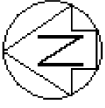
Whakatane District

Amalgamation Conditions

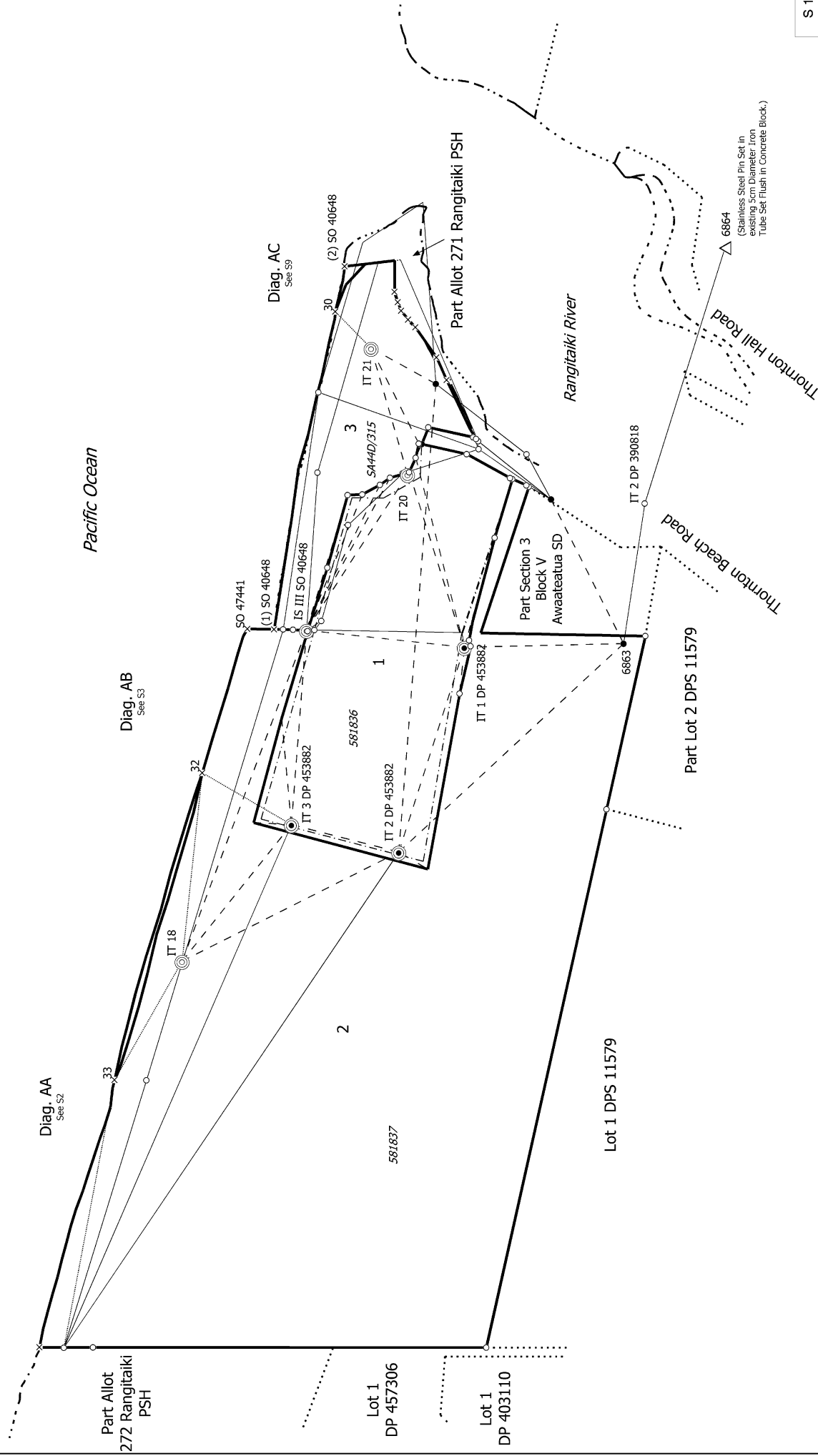
Last Edited: 15 Jun 2022 11:27:18

That Lot 3 and Part Section 3 block V Awaateatua Survey District be held in the same Record of Title





Diag. A



S 1/9

Land District: South Auckland

Digitally Generated Plan

Generated on: 04/04/2024 10:7:13am | Page 11 of 24

Lots 1 - 3 being a Boundary Adjustment of Lots 1 & 2 DP 453882, Lot 1 DPS

47185 & Pt Section 10 BLK V Awaateatua SD

Surveyor: Rhys James Kelly

Firm: RPC Ltd Registered Surveyors (MTR)

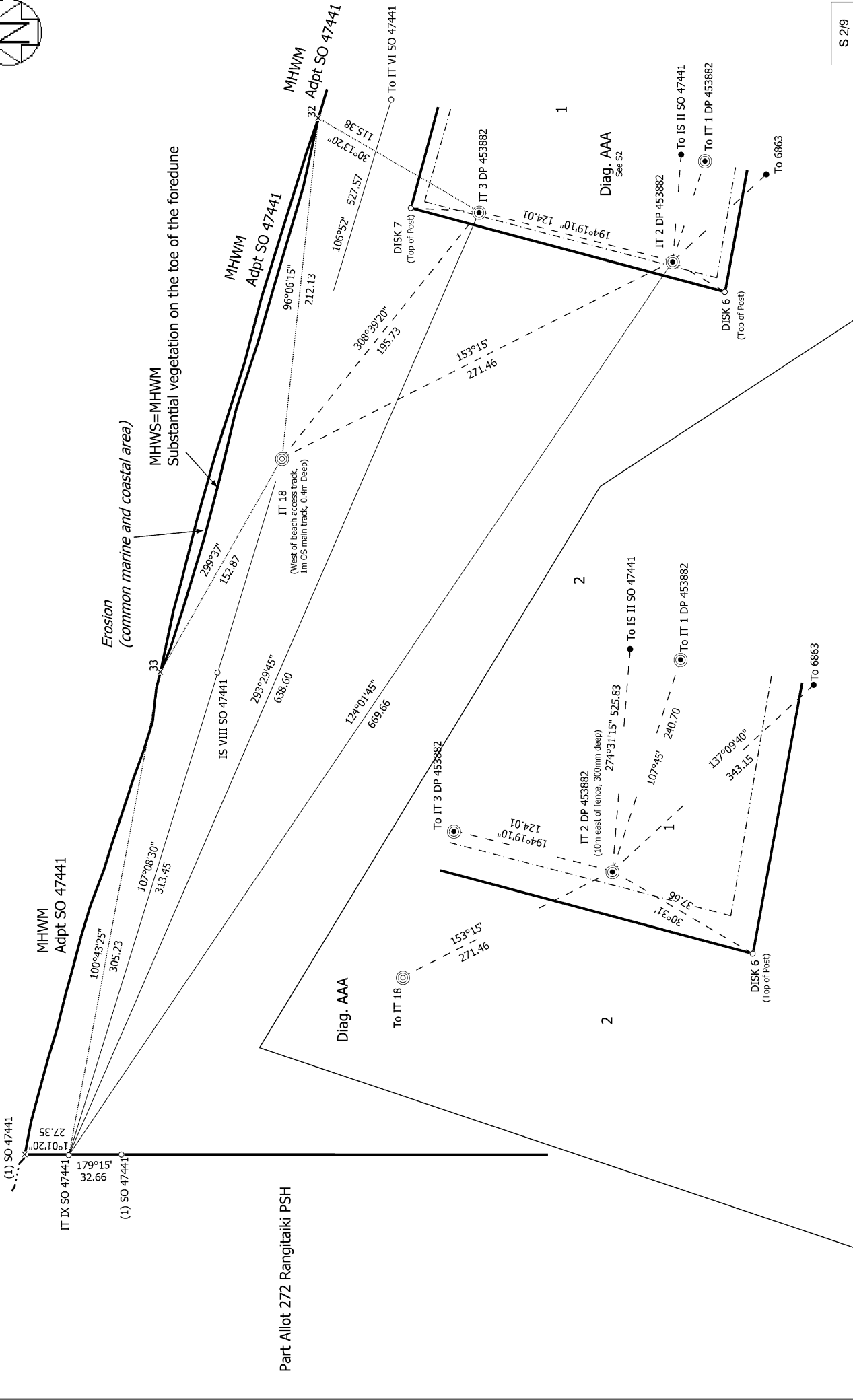
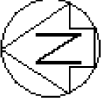
Date of Survey: 8/06/2022

Record of Survey

DP 565532

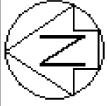
Deposited on: 18/03/2024

Diag. AA



S 2/9

Part Allot 272 Rangitaiki PSH

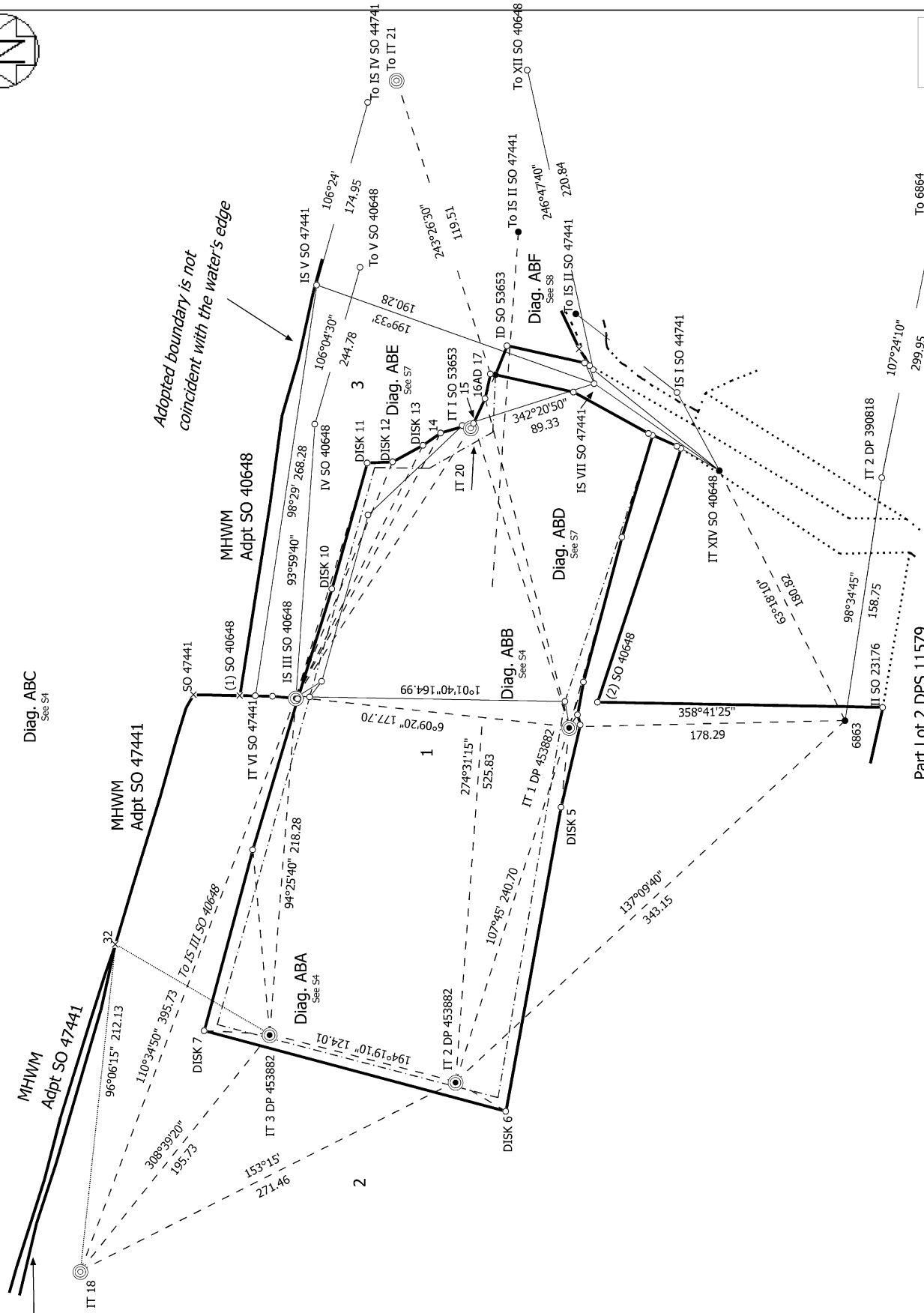


MHWS=MHWM
Substantial vegetation on the toe of the foredune

Diag. AB

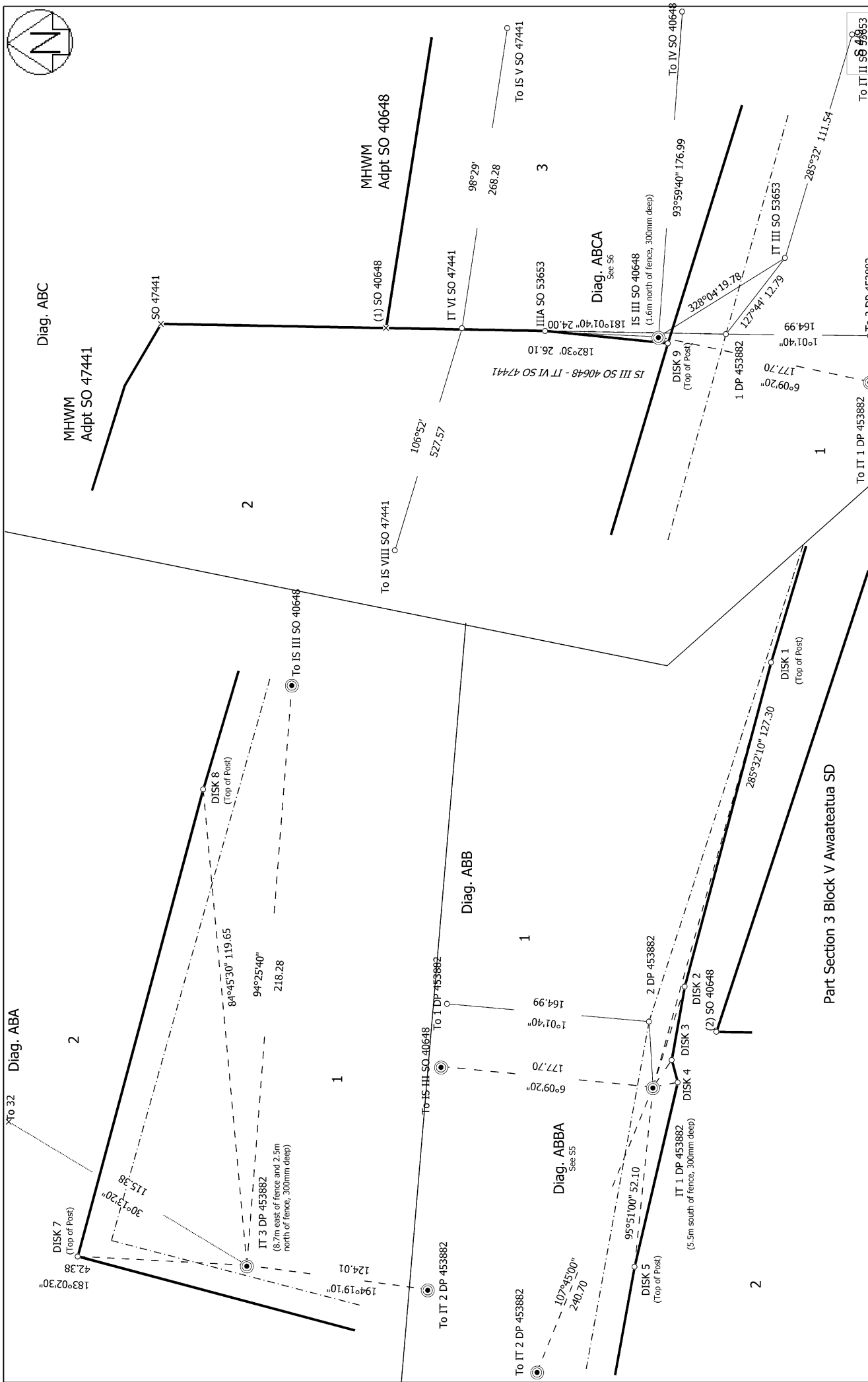
Diag. ABC
See S4

Adopted boundary is not coincident with the water's edge

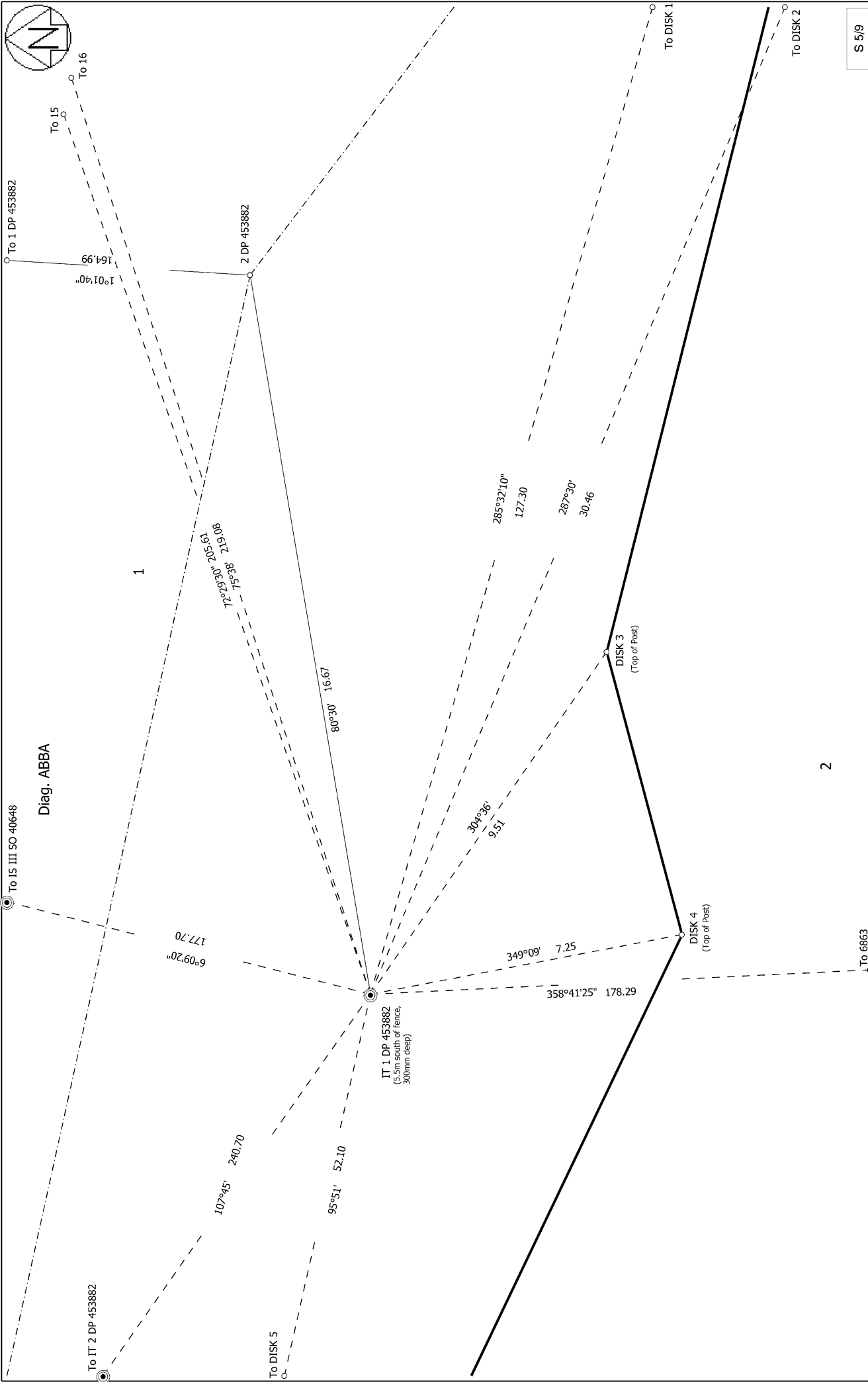


Part Lot 2 DPS 11579

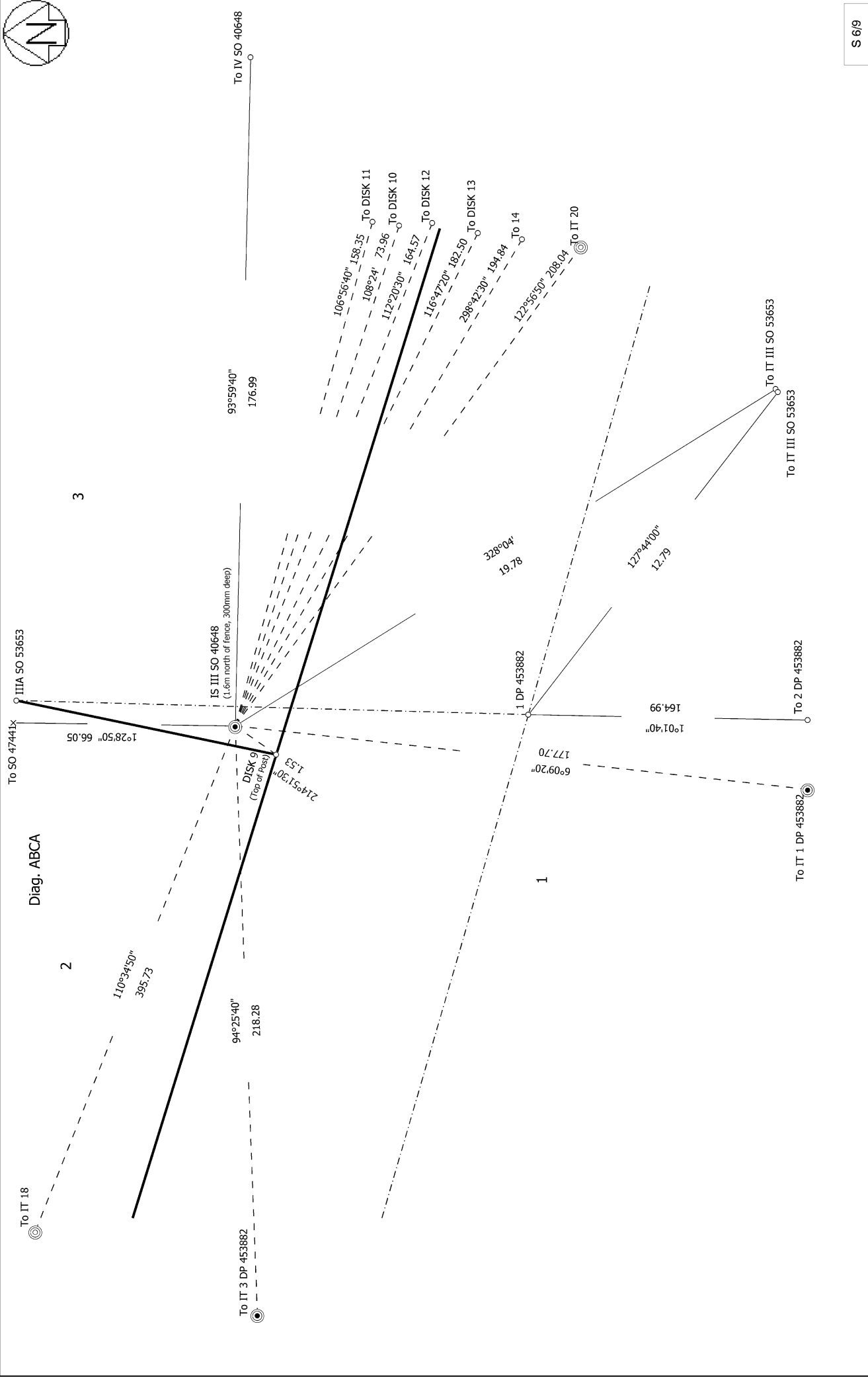
S 3/9



Land District: South Auckland	Record of Survey DP 565532	Deposited on: 18/03/2024
Digitally Generated Plan Generated on: 04/04/2024 10:13:01 Page 14 of 24	Surveyor: Rhys James Kelly Firm: RPC Ltd Registered Surveyors (M/M) Date of Survey: 8/06/2022	Lots 1 - 3 being a Boundary Adjustment of Lots 1 & 2 DP 453882, Lot 1 DPS 47185 & Pt Section 10 BLK V Awaateatua SD



S 5/9	Surveyor: Rhys James Kelly Firm: RPC Ltd Registered Surveyors (MIM) Date of Survey: 8/06/2022	Record of Survey DP 565532 Deposited on: 18/03/2024
Land District: South Auckland Digitally Generated Plan Generated on: 04/04/2024 10:13am Page 15 of 24		
Lots 1 - 3 being a Boundary Adjustment of Lots 1 & 2 DP 453882, Lot 1 DPS 47185 & Pt Section 10 BLK V Awaateatua SD		



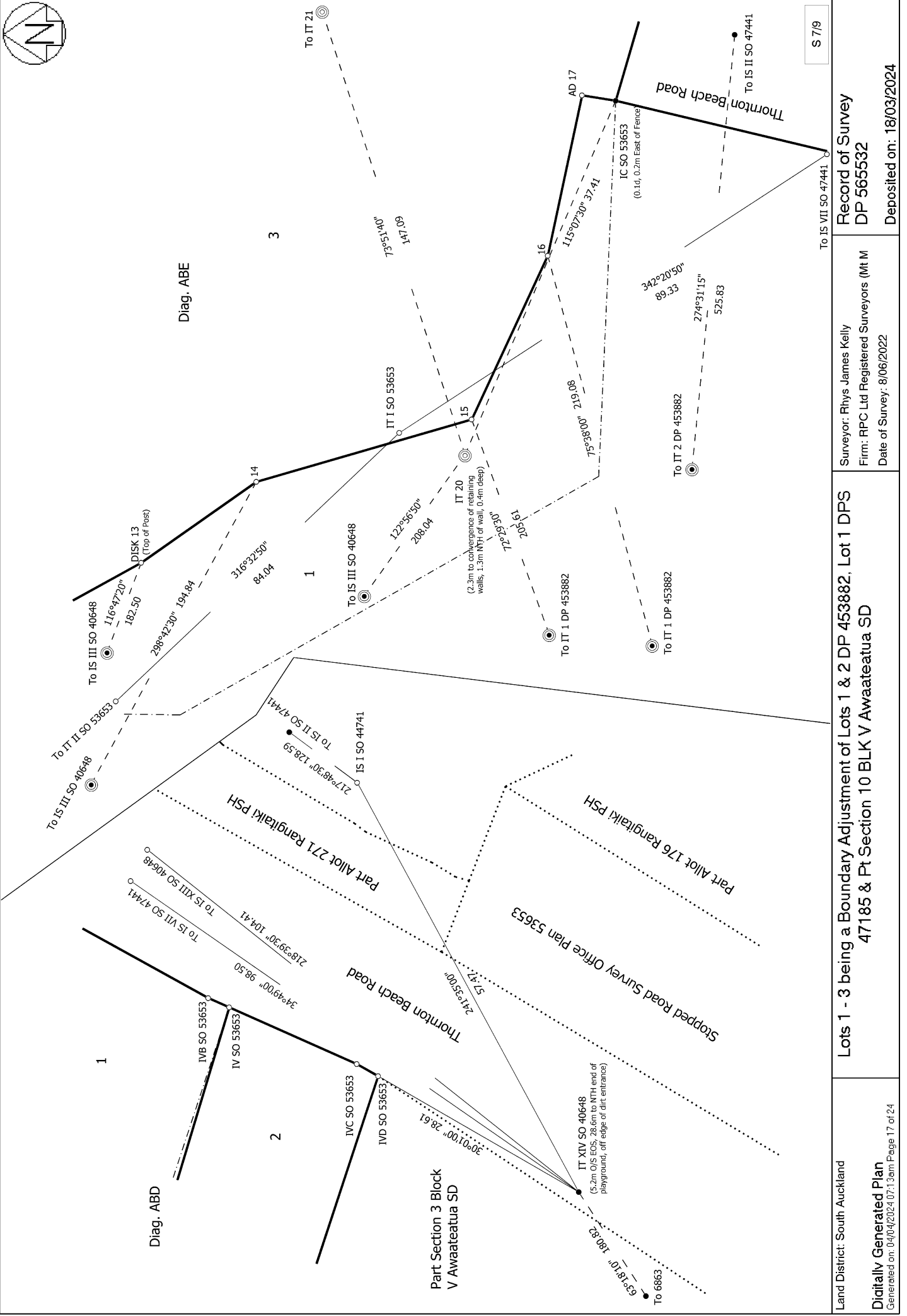
S 6/9

Record of Survey
DP 565532
Deposited on: 18/03/2024

Surveyor: Rhys James Kelly
Firm: RPC Ltd Registered Surveyors (M/M)
Date of Survey: 8/06/2022

Lots 1 - 3 being a Boundary Adjustment of Lots 1 & 2 DP 453882, Lot 1 DPS
47185 & Pt Section 10 BLK V Awaateatua SD

Land District: South Auckland
Digitally Generated Plan
Generated on: 04/04/2024 10:13am | Page 16 of 24



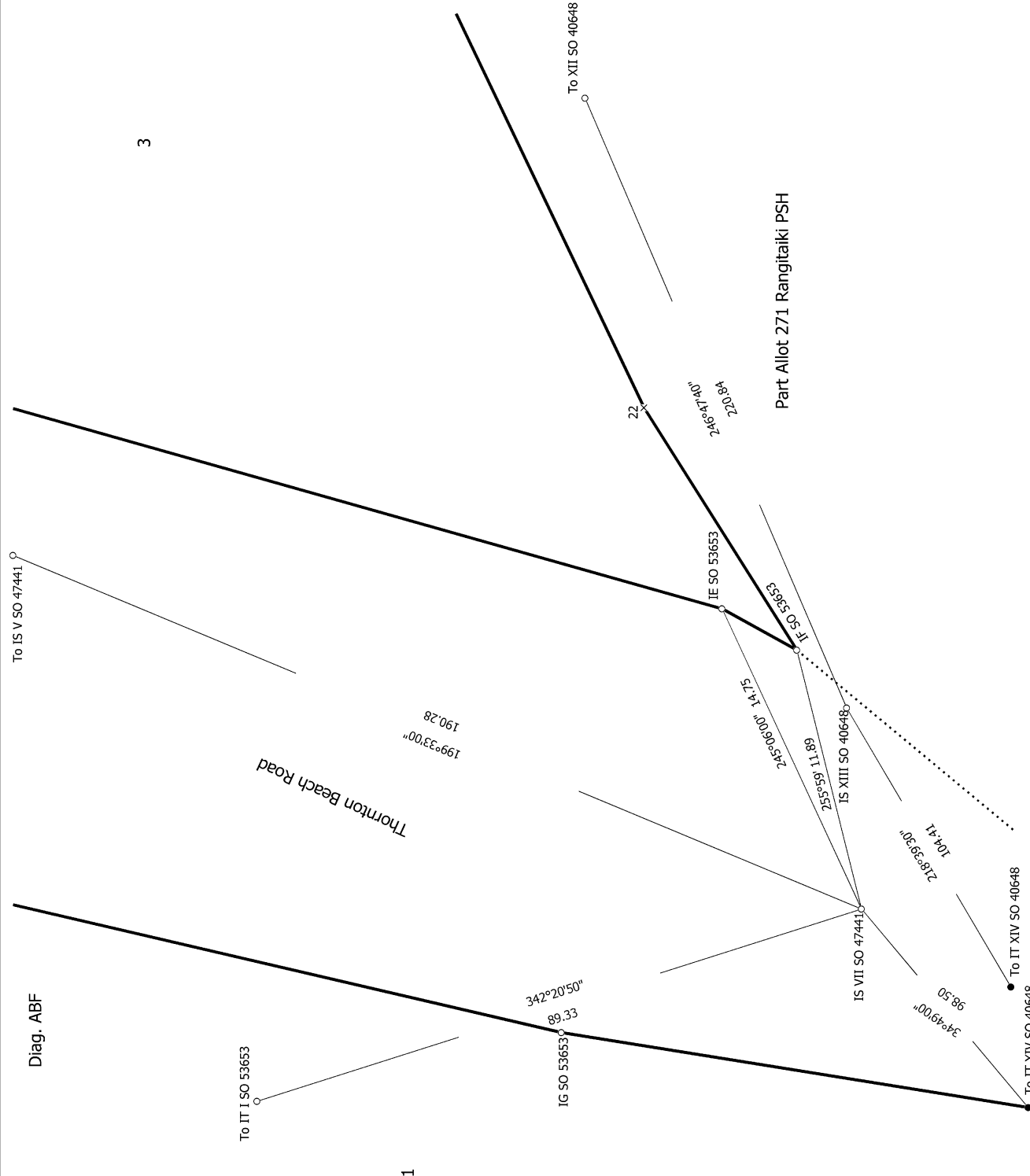
Land District: South Auckland
Digitally Generated Plan
Generated on: 04/04/2024 10:27:13am Page 17 of 24

S 7/9

Record of Survey
DP 565532

Surveyor: Rhys James Kelly
Firm: RPC Ltd Registered Surveyors (M/T/M)
Date of Survey: 8/06/2022
Deposited on: 18/03/2024

Lots 1 - 3 being a Boundary Adjustment of Lots 1 & 2 DP 453882, Lot 1 DPS 47185 & Pt Section 10 BLK V Awaateatua SD



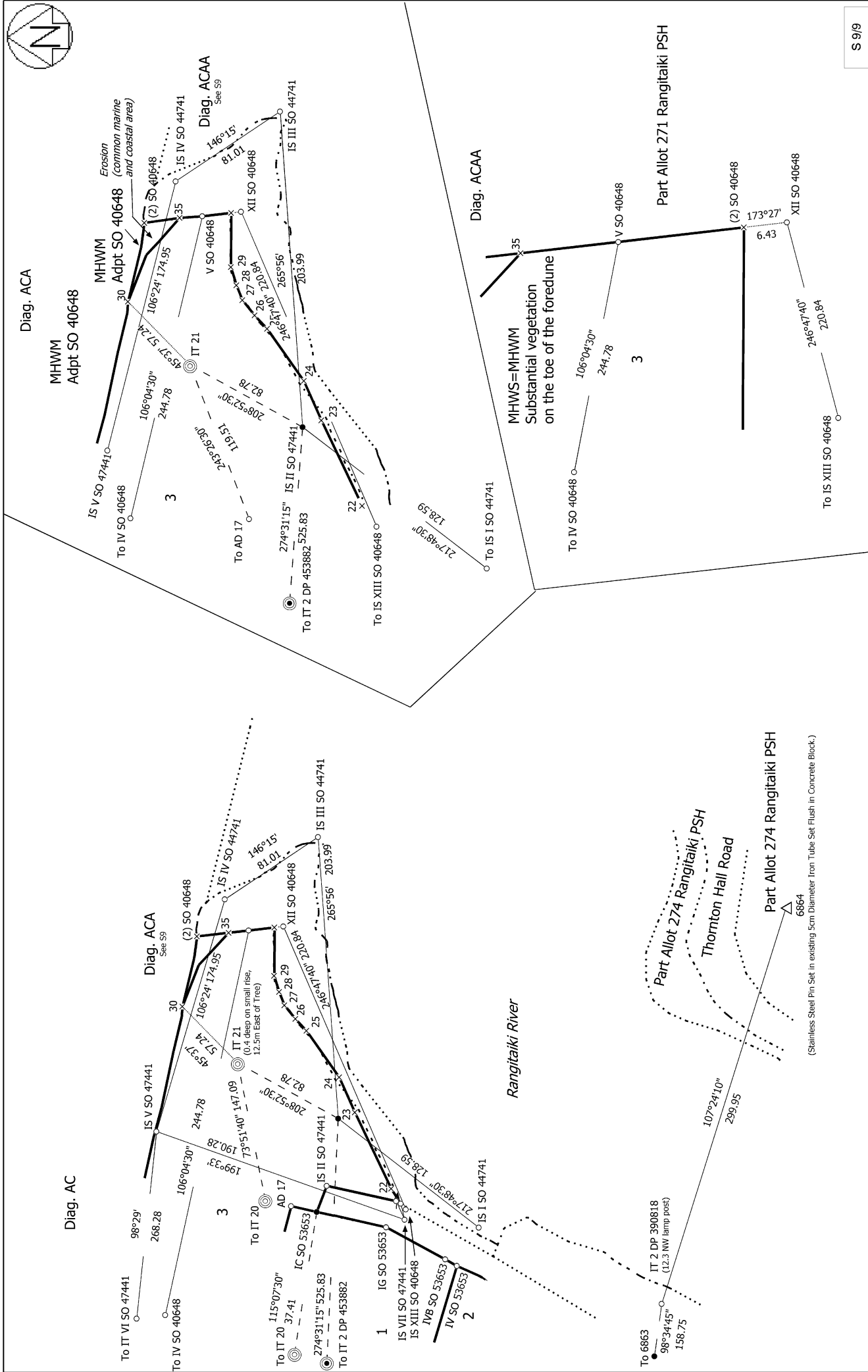
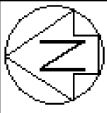
S 8/9

Record of Survey
 DP 565532
 Deposited on: 18/03/2024

Surveyor: Rhys James Kelly
 Firm: RPC Ltd Registered Surveyors (M/M)
 Date of Survey: 8/06/2022

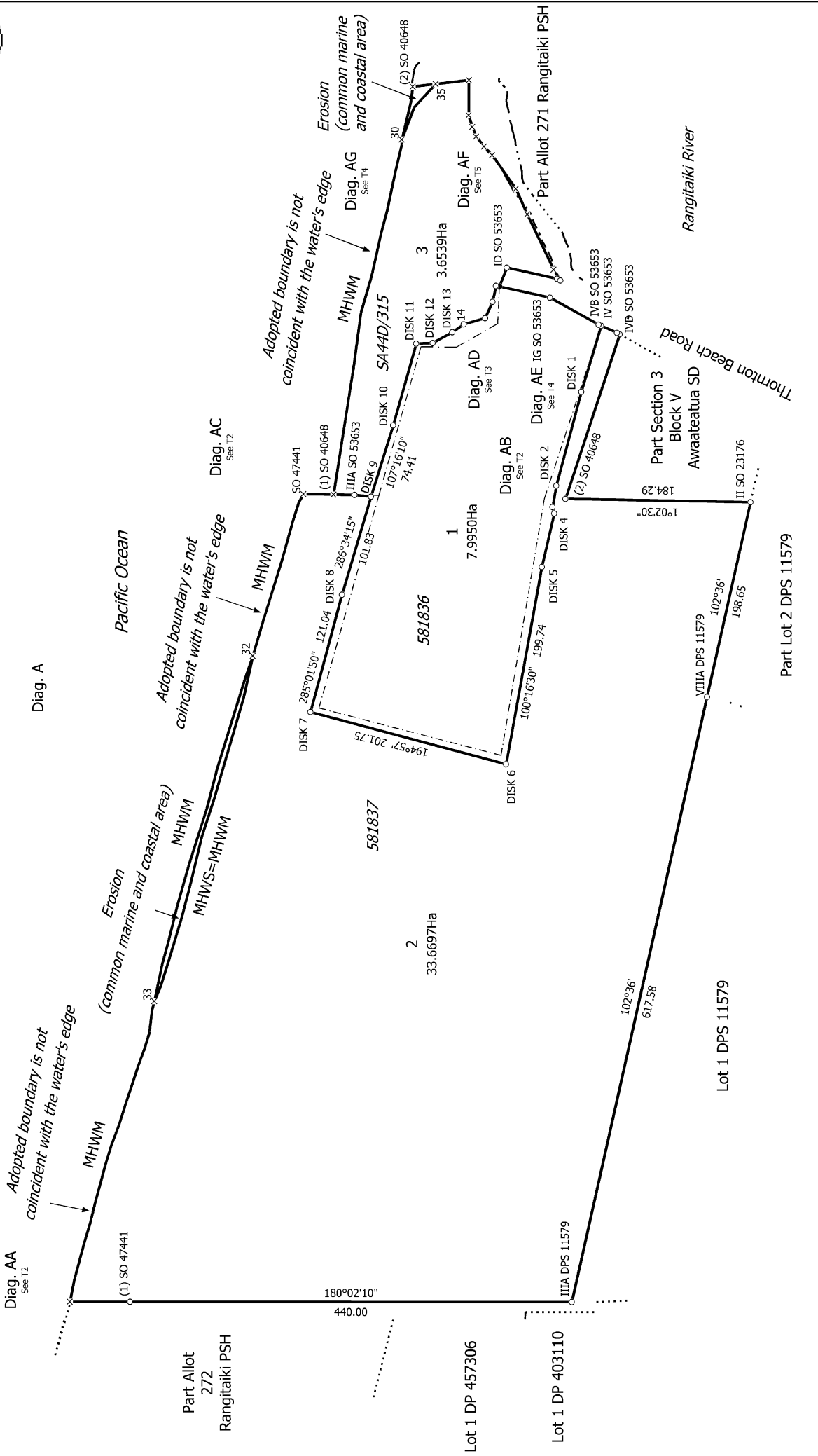
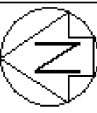
**Lots 1 - 3 being a Boundary Adjustment of Lots 1 & 2 DP 453882, Lot 1 DPS
 47185 & Pt Section 10 BLK V Awaateatua SD**

Land District: South Auckland
Digitally Generated Plan
 Generated on: 04/04/2024 10:13am Page 18 of 24

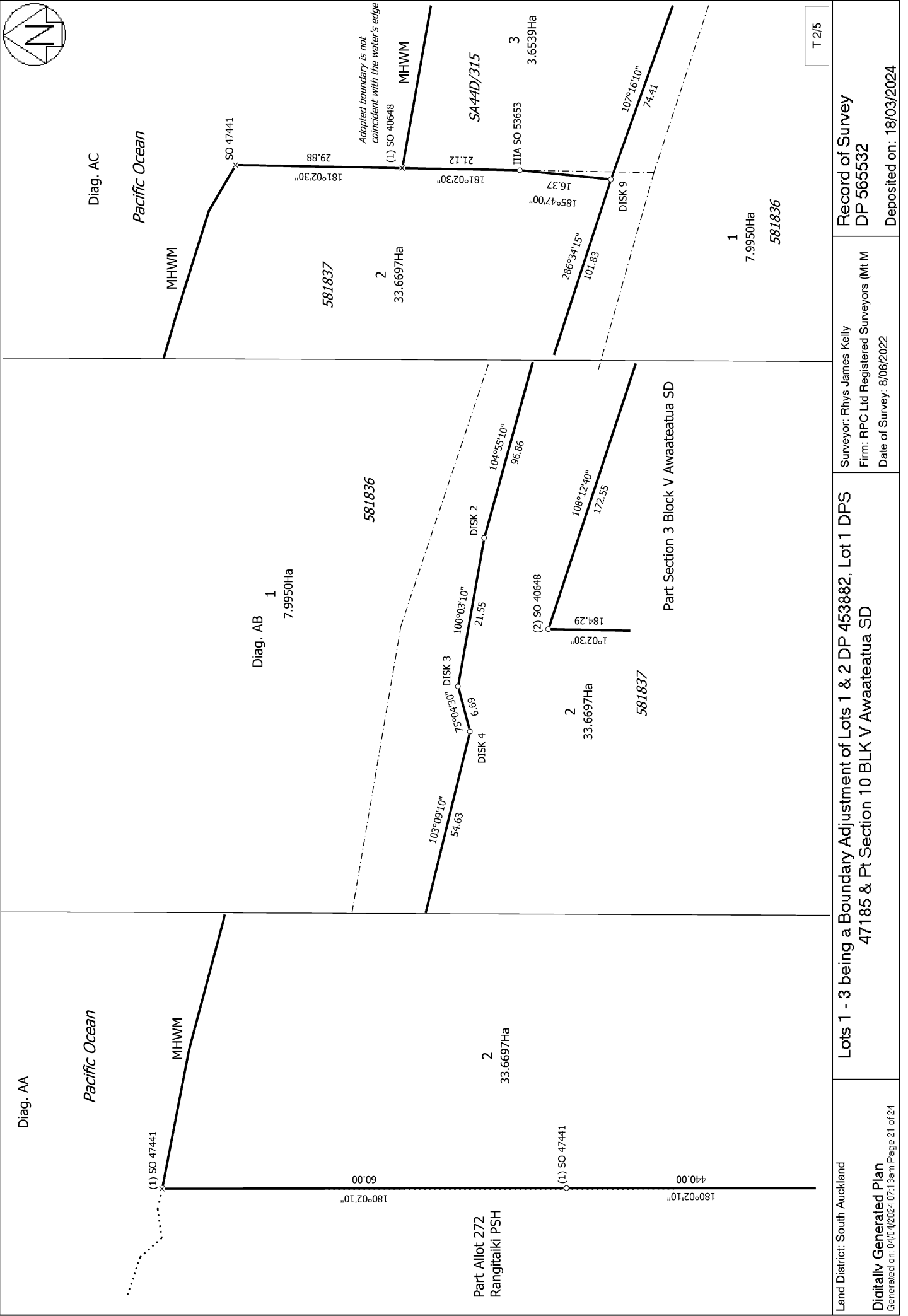


S 9/9

<p>Land District: South Auckland</p> <p>Digitally Generated Plan</p> <p>Generated on: 04/04/2024 10:13:01 Page 19 of 24</p>	<p>Lots 1 - 3 being a Boundary Adjustment of Lots 1 & 2 DP 453882, Lot 1 DPS 47185 & Pt Section 10 BLK V Awaateatua SD</p>	<p>Surveyor: Rhys James Kelly</p> <p>Firm: RPC Ltd Registered Surveyors (MIM)</p> <p>Date of Survey: 8/06/2022</p>	<p>Record of Survey</p> <p>DP 565532</p> <p>Deposited on: 18/03/2024</p>
--	---	--	---



Land District: South Auckland Digitally Generated Plan <small>Generated on: 04/04/2024 10:71:3am Page 20 of 24</small>	Lots 1 - 3 being a Boundary Adjustment of Lots 1 & 2 DP 453882, Lot 1 DPS 47185 & Pt Section 10 BLK V Awaateatua SD	Surveyor: Rhys James Kelly Firm: RPC Ltd Registered Surveyors (M/M) Date of Survey: 8/06/2022
Part Lot 2 DPS 11579 Lot 1 DP 11579 Lot 1 DP 403110 Lot 1 DP 457306 Part Allot 272 Rangitaiki PSH		Record of Survey DP 565532 Deposited on: 18/03/2024
T 1/5		

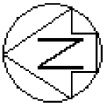


T 2/5

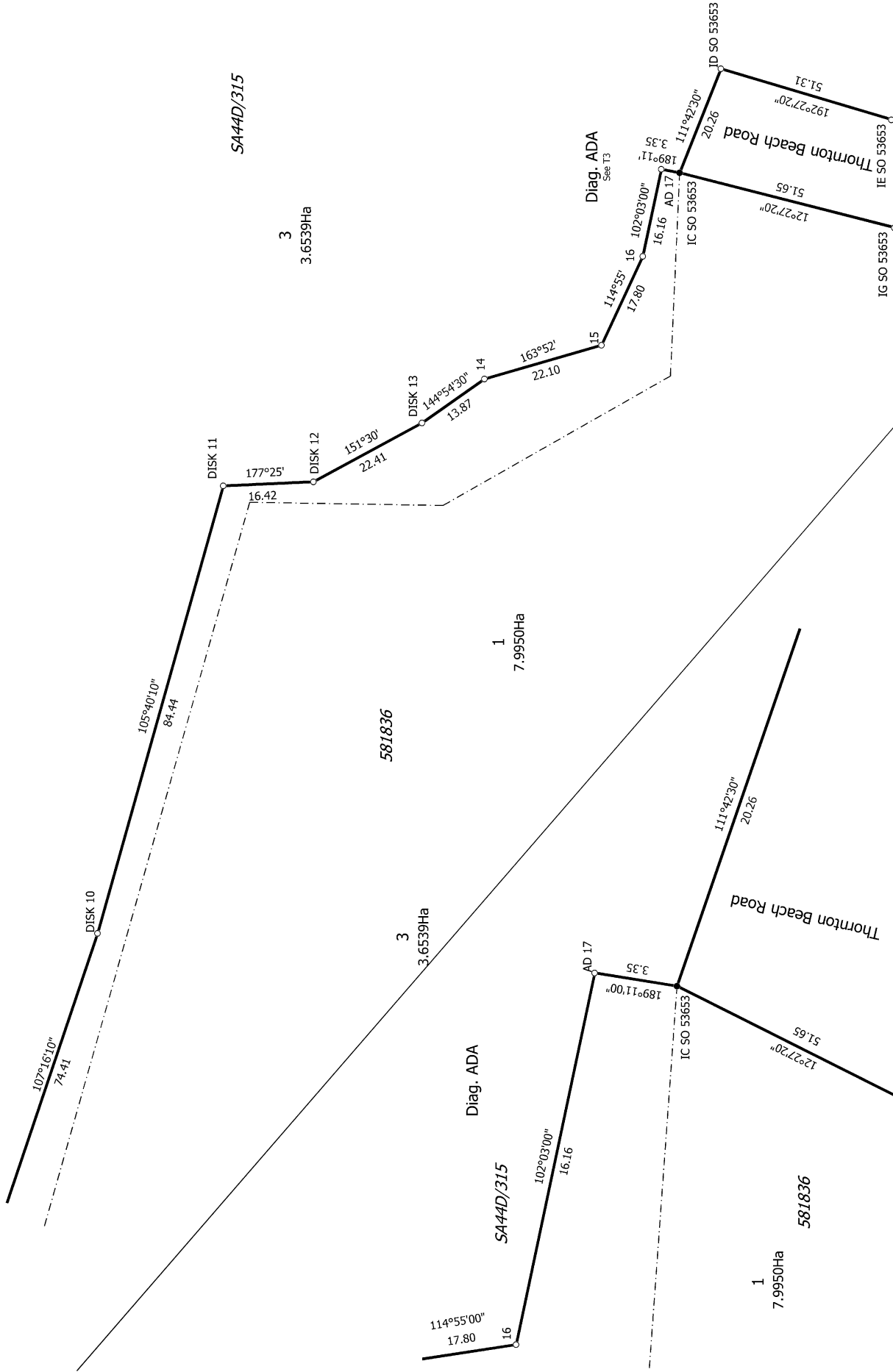
Lots 1 - 3 being a Boundary Adjustment of Lots 1 & 2 DP 453882, Lot 1 DPS 47185 & Pt Section 10 BLK V Awaateatua SD

Surveyor: Rhys James Kelly
 Firm: RPC Ltd Registered Surveyors (M/M)
 Date of Survey: 8/06/2022

Record of Survey
 DP 565532
 Deposited on: 18/03/2024



Diag. AD



T 3/5

Land District: South Auckland

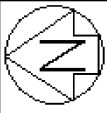
Digitally Generated Plan

Generated on: 04/04/2024 10:71:36am | Page 22 of 24

Lots 1 - 3 being a Boundary Adjustment of Lots 1 & 2 DP 453882, Lot 1 DPS 47185 & Pt Section 10 BLK V Awaateatua SD

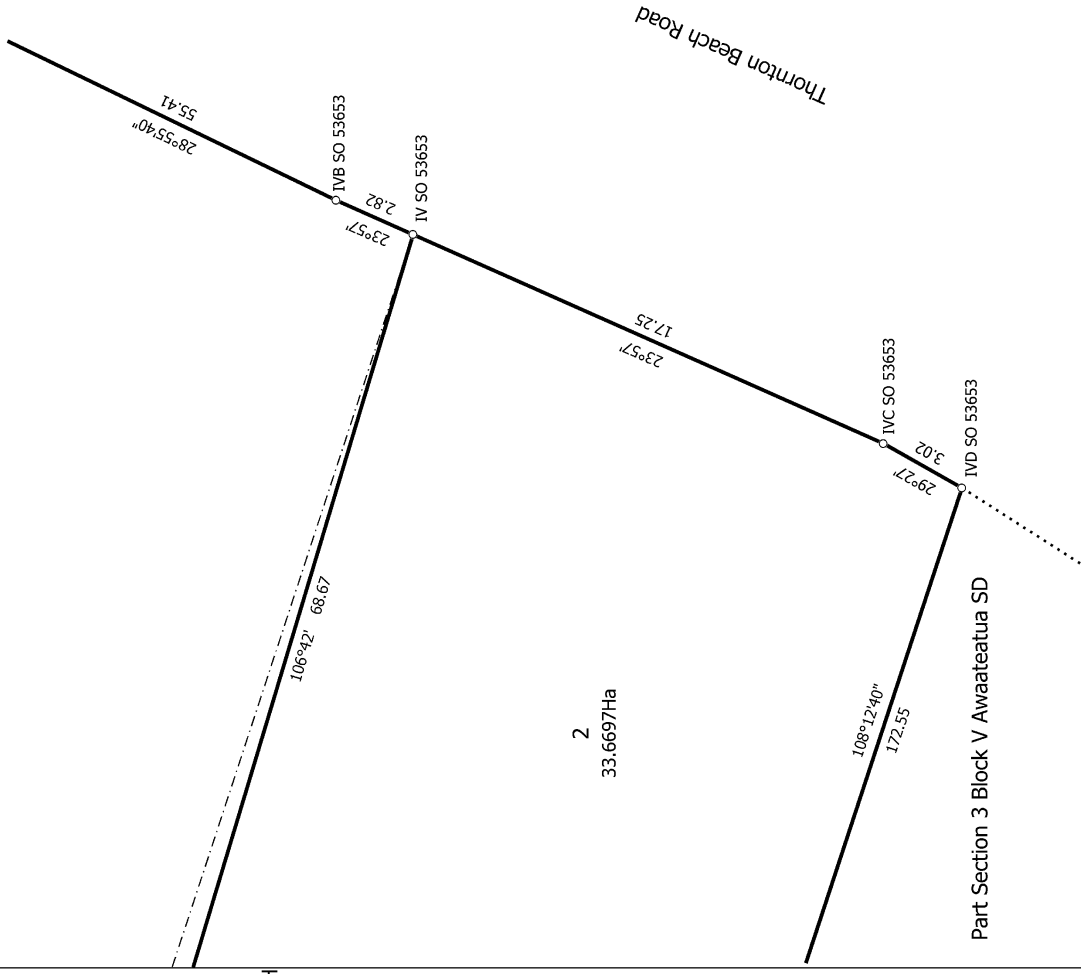
Surveyor: Rhys James Kelly
 Firm: RPC Ltd Registered Surveyors (M/M)
 Date of Survey: 8/06/2022

Record of Survey
 DP 565532
 Deposited on: 18/03/2024



Diag. AE

1
7.9950Ha

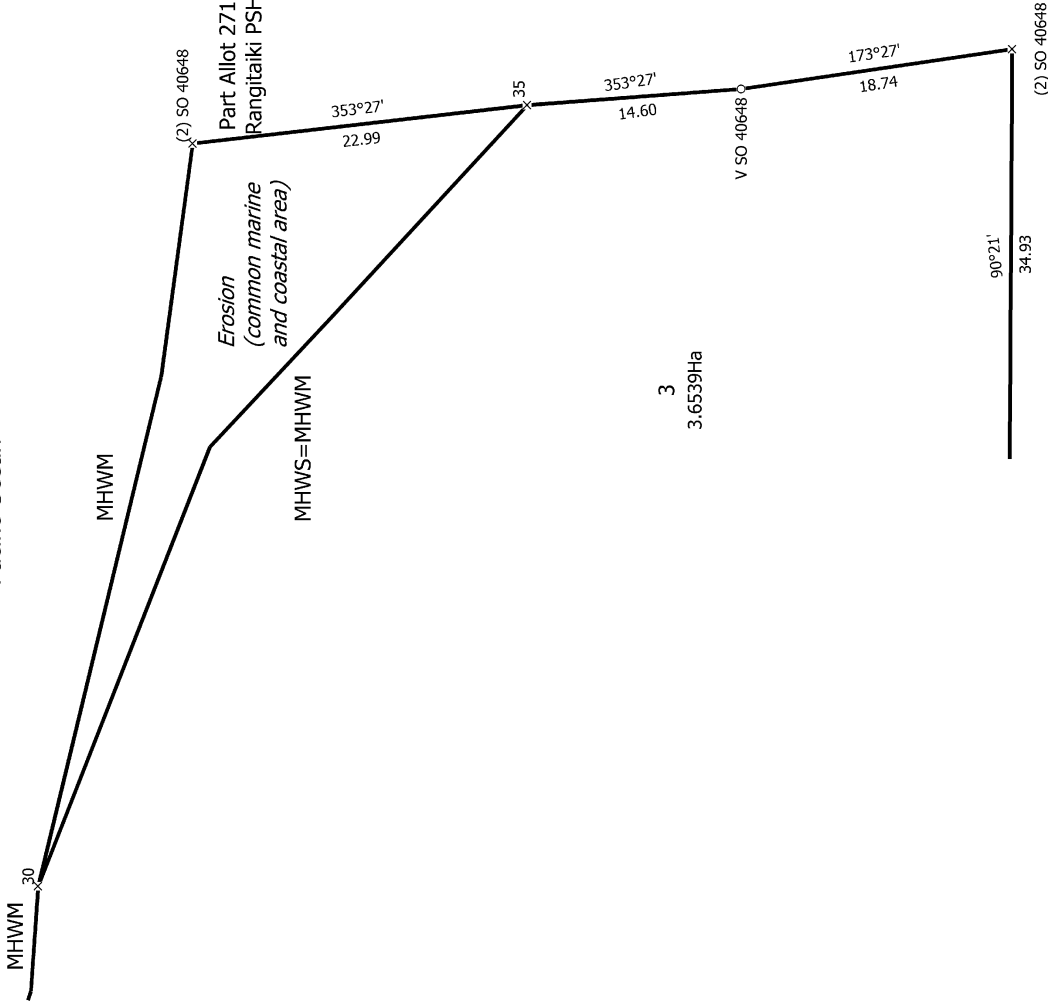


2
33.6697Ha

Part Section 3 Block V Awaateatua SD

Diag. AG

Pacific Ocean



3
3.6539Ha

T 4/5

Land District: South Auckland

Digitally Generated Plan

Generated on: 04/04/2024 10:71:36am | Page 23 of 24

Lots 1 - 3 being a Boundary Adjustment of Lots 1 & 2 DP 453882, Lot 1 DPS
47185 & Pt Section 10 BLK V Awaateatua SD

Surveyor: Rhys James Kelly
Firm: RPC Ltd Registered Surveyors (M/M)
Date of Survey: 8/06/2022

Record of Survey
DP 565532

Deposited on: 18/03/2024



353°27'
14.60
V SO 40648
173°27'
18.74
(2) SO 40648

Diag. AF

90°21'
34.93

29

72°50'
12.26

28

68°02'
10.33

27

51°23'
12.63

26

46°49'
11.77

25

Part Allot 271 Rangitaiki PSH

3
3.6539Ha

54°52'
41.10

24

66°01'
28.72

23

64°30'49"
50.19

22

57°47'12.76"
3.80

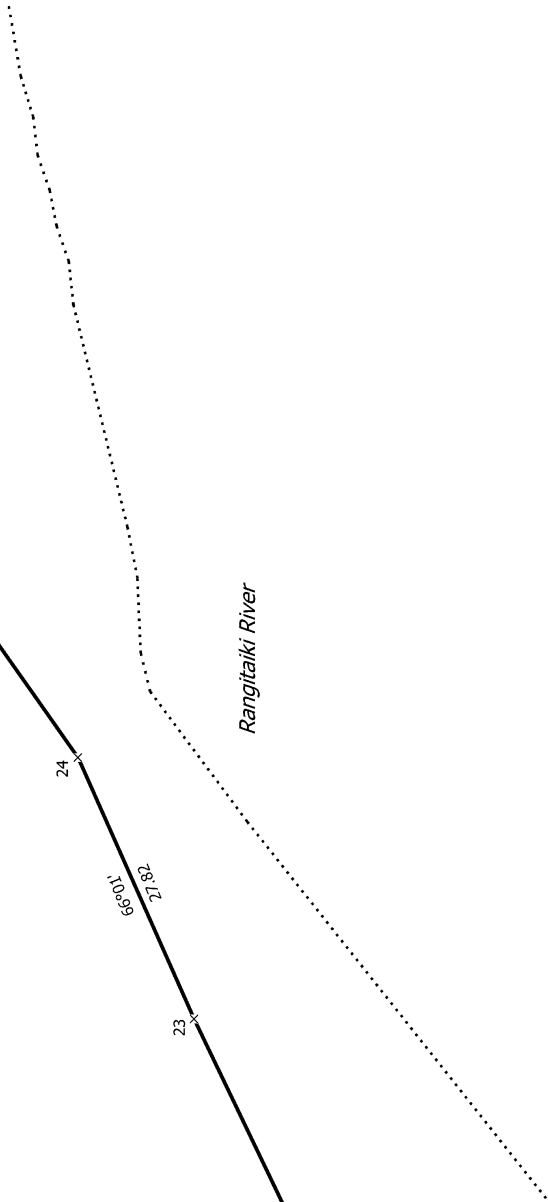
208°55'40"
IF SO 53653

10°00'30"
50.19

111°42'30"
20.26

192°27'20"
51.31

ID SO 53653



Rangitaiki River

Thornton Beach Road

T 5/5

Lots 1 - 3 being a Boundary Adjustment of Lots 1 & 2 DP 453882, Lot 1 DPS
47185 & Pt Section 10 BLK V Awaateatua SD

Record of Survey
DP 565532

Surveyor: Rhys James Kelly
Firm: RPC Ltd Registered Surveyors (Mt M)
Date of Survey: 8/06/2022

Land District: South Auckland
Digitally Generated Plan
Generated on: 04/04/2024 10:7:13am | Page 24 of 24

Deposited on: 18/03/2024