



Record of Survey - DP 561706

Survey Number DP 561706
Surveyor Reference M2191 Stage 2
Surveyor Michael Tyler Hager
Survey Firm Terramark Ltd
Surveyor Declaration I Michael Tyler Hager, being a licensed cadastral surveyor, certify that--
(a) this dataset provided by me and its related survey are accurate, correct and in accordance with the Cadastral Survey Act 2002 and Cadastral Survey Rules 2021; and
(b) the survey was undertaken by me or under my personal direction.
Declared on 22 Dec 2022 10:57 AM

Survey Details

Dataset Description Lots 2-14 Being a Subdivision of Lot 2 DP 551030 and Easement over Lot 1 DP 551030
Purpose LT Subdivision
Status Deposited
Land District Otago
Meridional Circuit North Taieri 2000

Type	Survey
Survey Class	Class A
Vertical Datum	None

Survey Dates

Surveyed Date	21/06/2021	Certified Date	22/12/2022
Submitted Date	22/12/2022 10:57:08	Survey Approval Date	31/01/2023
Deposit Date	26/06/2023		

Referenced Surveys

Survey Number	Land District	Bearing Correction
DP 8081	Otago	0°00'00"
SO 17755	Otago	0°00'00"
SO 18154	Otago	0°00'00"
DP 8472	Otago	0°00'00"
DP 497639	Otago	0°00'00"
DP 551030	Otago	0°00'00"

Territorial Authorities

Dunedin City

Comprised In

RT 951245
RT 951246

Created Parcels

Parcels	Parcel Intent	Area	RT Reference
Area R Deposited Plan 561706	Easement		
Area U Deposited Plan 561706	Easement		
Area V Deposited Plan 561706	Easement		
Area W Deposited Plan 561706	Easement		
Area X Deposited Plan 561706	Easement		

Record of Survey - DP 561706

Created Parcels

Parcels	Parcel Intent	Area	RT Reference
Area Y Deposited Plan 561706	Easement		
Lot 2 Deposited Plan 561706	Fee Simple Title	0.0699 Ha	1005347
Lot 3 Deposited Plan 561706	Fee Simple Title	0.1742 Ha	1005348
Lot 4 Deposited Plan 561706	Fee Simple Title	0.1391 Ha	1005349
Lot 5 Deposited Plan 561706	Fee Simple Title	0.1015 Ha	1005350
Lot 6 Deposited Plan 561706	Fee Simple Title	0.0711 Ha	1005351
Lot 7 Deposited Plan 561706	Fee Simple Title	0.0981 Ha	1005352
Lot 8 Deposited Plan 561706	Fee Simple Title	0.0822 Ha	1005353
Lot 9 Deposited Plan 561706	Fee Simple Title	0.0554 Ha	1005354
Lot 10 Deposited Plan 561706	Fee Simple Title	0.0751 Ha	1005355
Lot 11 Deposited Plan 561706	Fee Simple Title	0.0945 Ha	1005356
Lot 12 Deposited Plan 561706	Fee Simple Title	0.0563 Ha	1005357
Lot 13 Deposited Plan 561706	Fee Simple Title	0.0206 Ha	Multiple
Lot 14 Deposited Plan 561706	Fee Simple Title	0.0369 Ha	Multiple
Area A Deposited Plan 561706	Easement		
Area B Deposited Plan 561706	Easement		
Area C Deposited Plan 561706	Easement		
Area D Deposited Plan 561706	Easement		
Area E Deposited Plan 561706	Easement		
Area F Deposited Plan 561706	Easement		
Area I Deposited Plan 561706	Easement		
Area J Deposited Plan 561706	Easement		
Area K Deposited Plan 561706	Easement		
Area L Deposited Plan 561706	Easement		
Area M Deposited Plan 561706	Easement		
Area N Deposited Plan 561706	Easement		
Area O Deposited Plan 561706	Easement		
Area P Deposited Plan 561706	Easement		
Area Q Deposited Plan 561706	Easement		
Area Z Deposited Plan 561706	Easement		
Area AA Deposited Plan 561706	Easement		
Area S Deposited Plan 561706	Easement		
Area T Deposited Plan 561706	Easement		
Area AB Deposited Plan 561706	Easement		
Area AC Deposited Plan 561706	Easement		
Area AD Deposited Plan 561706	Easement		
Area AE Deposited Plan 561706	Easement		
Area AF Deposited Plan 561706	Easement		
Total Area		1.0749 Ha	

Mark and Vector

Survey Number DP 561706

Meridional Circuit North Taieri 2000

From	To	Code	Bearing	Adpt Surv	Bearing Correction	Distance	Adpt Surv	Class
IS 1 DP 551030	IS 1 DP 561706	ob84	341°55'00" M			74.61 M		
IS 1 DP 561706	IS 5 DP 551030	ob87	1°46'50" M			61.04 M		
IS 5 DP 551030	NAIL 4 DP 551030	ob104	69°03'30" M			73.47 M		
NAIL 4 DP 551030	NAIL 3 DP 551030	ob124	182°53'10" M			81.44 M		
NAIL 3 DP 551030	NAIL 2 DP 551030	ob127	183°23'30" M			82.62 M		
NAIL 2 DP 551030	IS 1 DP 551030	ob132	278°19'00" M			38.80 M		
IS 5 DP 551030	IT III SO 21099	ob105	235°11'15" M			201.45 M		
IT III SO 21099	IT IV DP 8081	ob174	71°01'30" M			49.15 M		
IT IV DP 8081	IT 4 DP 561706	ob175	133°10'00" M			62.18 M		
IT 4 DP 561706	IS 1 DP 561706	ob191	41°39'40" M			107.82 M		
NAIL 3 DP 551030	IS 2 DP 561706	ob128	213°44'00" M			48.48 M		
IS 2 DP 561706	IS 1 DP 561706	ob169	311°02'00" M			52.36 M		
IS 1 DP 551030	IT III SO 18154	ob85	1°23'10" M			83.95 M		
IT III SO 18154	IS 1 DP 561706	ob136	242°43'00" M			28.35 M		
IS 5 DP 551030	IS 3 DP 561706	ob106	146°16'30" M			29.08 M		
IS 3 DP 561706	IS 1 DP 561706	ob185	206°06'30" M			41.00 M		
IT III SO 18154	NAIL 3 DP 551030	ob137	99°42'40" A	DP 551030	0°00'00"	41.83 A	DP 551030	
IT III SO 18154	IS 5 DP 551030	ob138	334°07'00" A	DP 551030	0°00'00"	53.37 A	DP 551030	
NAIL 3 DP 551030	IT XII DP 9620	ob129	343°16'00" A	DP 551030	0°00'00"	17.98 A	DP 551030	
NAIL 2 DP 551030	IT X DP 9620	ob133	188°36'00" A	DP 551030	0°00'00"	44.28 A	DP 551030	
IT X DP 9620	IT XI DP 9620	ob10	1°06'20" A	DP 551030	0°00'00"	83.33 A	DP 551030	
IT XI DP 9620	IT XII DP 9620	ob14	4°29'20" A	DP 551030	0°00'00"	60.35 A	DP 551030	
IS 5 DP 551030	IT II SO 17755	ob107	259°50'00" A	DP 551030	0°00'00"	32.57 A	DP 551030	
IT II SO 17755	IT III SO 17755	ob28	223°13'00" A	SO 17755	0°00'00"	37.66 A	SO 17755	
IT III SO 17755	IT IV SO 17755	ob35	253°39'00" A	SO 17755	0°00'00"	37.23 A	SO 17755	
IT IV SO 17755	IS IIc DP 8081	ob36	141°08'00" A	SO 17755	0°00'00"	32.43 A	SO 17755	
IS IIc DP 8081	IS III DP 8081	ob30	133°08'55" A	DP 8081	0°00'00"	8.78 A	DP 8081	
IS III DP 8081	IT VIII DP 8081	ob158	133°08'55" A	DP 8081	0°00'00"	23.37 A	DP 8081	
IT VIII DP 8081	IS IX DP 8081	ob31	125°34'00" A	DP 8081	0°00'00"	52.51 A	DP 8081	
IS IX DP 8081	IS 1 DP 551030	ob16	110°18'30" A	DP 551030	0°00'00"	30.20 A	DP 551030	
IT IV DP 8081	IS III DP 8081	ob176	65°11'10" A	DP 8081	0°00'00"	57.37 A	DP 8081	
IT IV DP 8081	IT IVa DP 8081	ob177	133°08'55" A	DP 8081	0°00'00"	62.14 A	DP 8081	
IT IVa DP 8081	IS XII DP 8081	ob159	133°08'55" A	DP 8081	0°00'00"	20.70 A	DP 8081	
IS XII DP 8081	IS XI DP 8081	ob160	133°08'55" A	DP 8081	0°00'00"	13.77 A	DP 8081	
IS XI DP 8081	IS X DP 8081	ob161	42°52'50" A	DP 8081	0°00'00"	21.67 A	DP 8081	
IS X DP 8081	IS II DP 5139	ob163	43°04'50" A	DP 8081	0°00'00"	33.40 A	DP 8081	

Mark and Vector

Survey Number DP 561706

Meridional Circuit North Taieri 2000

From	To	Code	Bearing	Adpt Surv	Bearing Correction	Distance	Adpt Surv	Class
IS II DP 5139	IS IX DP 8081	ob162	48°30'40"	A DP 8081	0°00'00"	5.07 A	DP 8081	
IT 4 DP 561706	IT IVa DP 8081	ob192	339°15'00"	C		0.05 C		
IT XII DP 9620	IS XIII DP 9620	ob8	8°05'20"	A DP 551030	0°00'00"	51.22 A	DP 551030	
IS XIII DP 9620	IT XIV DP 9620	ob20	340°59'20"	A DP 551030	0°00'00"	6.91 A	DP 551030	
IT XIV DP 9620	IT I SO 17755	ob22	286°48'00"	A SO 17755	0°00'00"	5.75 A	SO 17755	
IT I SO 17755	IT II SO 17755	ob23	253°34'00"	A SO 17755	0°00'00"	94.75 A	SO 17755	
IT III SO 18154	IT II SO 18154	ob139	268°19'00"	A DP 551030	0°00'00"	47.28 A	DP 551030	
IT II SO 18154	PEG IV DP 8472	ob56	323°15'00"	A SO 18154	0°00'00"	20.70 A	SO 18154	
PEG IV DP 8472	IT III SO 17755	ob57	269°02'00"	A SO 18154	0°00'00"	21.53 A	SO 18154	
IT VIII DP 8081	IT V DP 8472	ob32	43°08'55"	A DP 8472	0°00'00"	35.81 A	DP 8472	
IT X DP 9620	PEG (24) DP 17618	ob11	133°40'20"	A DP 551030	0°00'00"	10.35 A	DP 551030	
IT X DP 9620	PEG XI DP 9684	ob12	313°49'20"	A DP 551030	0°00'00"	10.38 A	DP 551030	
IT X DP 9620	PEG Ia DP 17618	ob13	312°30'20"	A DP 551030	0°00'00"	10.32 A	DP 551030	
IT XI DP 9620	PEG X DP 9684	ob15	272°48'20"	A DP 551030	0°00'00"	7.63 A	DP 551030	
IT XII DP 9620	PEG XV DP 9684	ob9	276°17'20"	A DP 551030	0°00'00"	7.63 A	DP 551030	
IS XIII DP 9620	PEG V DP 9684	ob21	264°40'20"	A DP 551030	0°00'00"	7.84 A	DP 551030	
IT I SO 17755	PEG (100) SO 17755	ob24	258°57'00"	A SO 17755	0°00'00"	16.91 A	SO 17755	
IT I SO 17755	PEG (101) SO 17755	ob25	265°48'00"	A SO 17755	0°00'00"	11.85 A	SO 17755	
IT I SO 17755	PEG (102) SO 17755	ob26	267°05'00"	A SO 17755	0°00'00"	6.84 A	SO 17755	
IT I SO 17755	PEG (103) SO 17755	ob27	218°33'00"	A SO 17755	0°00'00"	3.99 A	SO 17755	
IT II SO 17755	PEG (65) SO 17755	ob29	205°31'00"	A SO 17755	0°00'00"	18.31 A	SO 17755	
IT V DP 8472	PEG 191 DP 561706	ob83	161°00'55"	A DP 8472	0°00'00"	3.28 A	DP 8472	
IT VIII DP 8081	PEG (190) DP 8081	ob33	77°14'25"	A DP 8472	0°00'00"	5.16 A	DP 8472	
IS IX DP 8081	PEG IIa DP 5139	ob17	165°31'30"	A DP 8081	0°00'00"	4.96 A	DP 8081	
IS 5 DP 551030	PEG (264) SO 17755	ob108	250°22'00"	M		17.05 M		
IS 5 DP 551030	PEG 5a DP 551030	ob109	72°40'00"	A DP 551030	0°00'00"	17.85 A	DP 551030	
IS 5 DP 551030	PEG 5b DP 551030	ob110	67°52'00"	A DP 551030	0°00'00"	37.89 A	DP 551030	
IS 5 DP 551030	PEG 5c DP 551030	ob111	68°24'00"	A DP 551030	0°00'00"	45.58 A	DP 551030	
IS 5 DP 551030	PEG 5d DP 551030	ob112	73°14'30"	A DP 551030	0°00'00"	48.96 A	DP 551030	
IS 5 DP 551030	PEG 5e DP 551030	ob113	73°52'00"	A DP 551030	0°00'00"	38.15 A	DP 551030	

Mark and Vector

Survey Number DP 561706

Meridional Circuit North Taieri 2000

From	To	Code	Bearing	Adpt Surv	Bearing Correction	Distance	Adpt Surv	Class
IS 5 DP 551030	PEG 5f DP 551030	ob114	85°00'00"	A DP 551030	0°00'00"	18.62 A	DP 551030	
IS 5 DP 551030	PEG 5g DP 551030	ob115	96°26'00"	A DP 551030	0°00'00"	10.29 A	DP 551030	
IS 5 DP 551030	PEG 5h DP 551030	ob116	116°30'00"	A DP 551030	0°00'00"	9.68 A	DP 551030	
IS 5 DP 551030	PEG 5i DP 551030	ob117	147°00'00"	A DP 551030	0°00'00"	27.62 A	DP 551030	
IT III SO 18154	IS IIIa DP 551030	ob140	29°19'00"	A DP 551030	0°00'00"	39.02 A	DP 551030	
IT III SO 18154	UNMK 3 DP 551030	ob141	40°05'10"	A DP 551030	0°00'00"	50.29 A	DP 551030	
PEG IV DP 8472	PEG 69 DP 561706	ob58	341°01'00"	A SO 18154	0°00'00"	5.03 C		Class A
PEG 69 DP 561706	PEG (65) SO 17755	ob45	341°01'00"	A SO 18154	0°00'00"	6.15 C		Class A
PEG (65) SO 17755	PEG (264) SO 17755	ob6	55°19'00"	A SO 18154	0°00'00"	29.07 A	SO 18154	Class A
PEG (264) SO 17755	PEG 67 DP 561706	ob167	71°33'00"	A SO 17755	0°00'00"	19.86 C		Class A
PEG 67 DP 561706	PEG 5a DP 551030	ob43	71°33'00"	A SO 17755	0°00'00"	15.03 C		Class A
PEG 5a DP 551030	UNMK 2 DP 551030	ob166	63°36'00"	A SO 17755	0°00'00"	18.24 A	DP 551030	Class A
UNMK 2 DP 551030	PEG 5b DP 551030	ob7	63°36'00"	A SO 17755	0°00'00"	1.93 A	DP 551030	Class A
PEG 5b DP 551030	PEG 5c DP 551030	ob164	71°00'00"	A SO 17755	0°00'00"	7.71 A	SO 17755	Class A
PEG 5c DP 551030	PEG (100) SO 17755	ob165	350°42'00"	A SO 17755	0°00'00"	1.04 A	SO 17755	Class A
PEG (100) SO 17755	UNMK 117 DP 561706	ob34	63°36'00"	A SO 17755	0°00'00"	3.24 C		Class A
UNMK 117 DP 561706	PEG (101) SO 17755	ob211	63°36'00"	A SO 17755	0°00'00"	2.09 C		Class A
PEG (101) SO 17755	PEG (102) SO 17755	ob37	84°02'00"	A SO 17755	0°00'00"	5.02 A	SO 17755	Class A
PEG (102) SO 17755	UNMK (104) SO 17755	ob38	122°31'00"	A SO 17755	0°00'00"	0.74 A	SO 17755	Class A
UNMK (104) SO 17755	PEG (103) SO 17755	ob40	122°31'00"	A SO 17755	0°00'00"	4.41 A	SO 17755	Class A
PEG (103) SO 17755	PEG V DP 9684	ob39	157°14'00"	A SO 17755	0°00'00"	6.29 A	SO 17755	Class A
PEG V DP 9684	PEG 5d DP 551030	ob1	279°32'00"	A DP 551030	0°00'00"	12.04 A	DP 551030	Class A
PEG 5e DP 551030	PEG 5d DP 551030	ob148	71°01'00"	A DP 551030	0°00'00"	10.83 A	DP 551030	Class A
PEG 5e DP 551030	UNMK 112 DP 561706	ob149	243°37'00"	A DP 551030	0°00'00"	2.38 C		Class A

Mark and Vector

Survey Number DP 561706

Meridional Circuit North Taieri 2000

From	To	Code	Bearing	Adpt Surv	Bearing Correction	Distance	Adpt Surv	Class
UNMK 112 DP 561706	UNMK 4 DP 551030	ob209	243°37'00"	A DP 551030	0°00'00"	5.09 C		Class A
UNMK 4 DP 551030	PEG 5f DP 551030	ob41	243°37'00"	A DP 551030	0°00'00"	12.73 A	DP 551030	Class A
PEG 5f DP 551030	PEG 5g DP 551030	ob150	251°33'00"	A DP 551030	0°00'00"	8.77 A	DP 551030	Class A
PEG 5g DP 551030	PEG 5h DP 551030	ob151	206°25'00"	A DP 551030	0°00'00"	3.53 A	DP 551030	Class A
PEG 5i DP 551030	IS IIIa DP 551030	ob153	71°28'00"	A DP 551030	0°00'00"	28.85 A	DP 551030	Class A
IS IIIa DP 551030	UNMK 234 DP 561706	ob144	71°28'00"	A DP 551030	0°00'00"	5.48 C		Class A
UNMK 3 DP 551030	PEG XV DP 9684	ob145	188°05'20"	A DP 551030	0°00'00"	27.76 A	DP 551030	Class A
UNMK 132 DP 561706	UNMK 52 DP 561706	ob228	184°29'20"	A DP 551030	0°00'00"	21.09 C		Class A
UNMK 52 DP 561706	UNMK 64 DP 561706	ob52	184°29'20"	A DP 551030	0°00'00"	16.79 C		Class A
UNMK 64 DP 561706	UNMK 51 DP 561706	ob204	184°29'20"	A DP 551030	0°00'00"	8.78 C		Class A
UNMK 51 DP 561706	UNMK 50 DP 561706	ob50	184°29'20"	A DP 551030	0°00'00"	8.00 C		Class A
UNMK 50 DP 561706	PEG X DP 9684	ob49	184°29'20"	A DP 551030	0°00'00"	4.12 C		Class A
PEG X DP 9684	UNMK 61 DP 561706	ob3	181°06'20"	A DP 551030	0°00'00"	3.92 C		Class A
UNMK 61 DP 561706	UNMK 49 DP 561706	ob202	181°06'20"	A DP 551030	0°00'00"	21.28 C		Class A
UNMK 49 DP 561706	PEG XI DP 9684	ob47	181°06'20"	A DP 551030	0°00'00"	51.32 C		Class A
PEG XI DP 9684	PEG XXII DP 9684	ob4	133°09'20"	A DP 551030	0°00'00"	20.54 A	DP 551030	Class A
PEG XXII DP 9684	PEG (24) DP 17618	ob5	181°06'20"	A DP 551030	0°00'00"	0.29 A	DP 551030	Class A
PEG (24) DP 17618	PEG Ia DP 17618	ob0	313°09'25"	A DP 497639	0°00'00"	20.68 A	DP 497639	Class A
PEG Ia DP 17618	PEG 92 DP 561706	ob18	313°11'30"	C		66.46 C		Class A
PEG 92 DP 561706	PEG IIa DP 5139	ob46	313°11'30"	C		3.82 C		Class A
PEG IIa DP 5139	PEG (190) DP 8081	ob157	313°08'55"	A DP 8081	0°00'00"	53.35 C		Class A
PEG (190) DP 8081	PEG 191 DP 561706	ob81	43°08'55"	A DP 8472	0°00'00"	30.00 A	DP 8472	Class A
PEG 191 DP 561706	PEG 33 DP 561706	ob82	340°56'30"	C		10.81 C		Class A
PEG 33 DP 561706	PEG 36 DP 561706	ob180	340°56'30"	C		18.95 C		Class A

Mark and Vector

Survey Number DP 561706

Meridional Circuit North Taieri 2000

From	To	Code	Bearing	Adpt Surv	Bearing Correction	Distance	Adpt Surv	Class
PEG 36 DP 561706	PEG IV DP 8472	ob181	340°56'30"	C		7.33 C		Class A
PEG Ia DP 17618	PEG XI DP 9684	ob19	28°49'00"	A	DP 497639	0°00'00"	DP 497639	Class A
PEG 67 DP 561706	UNMK 122 DP 561706	ob44	161°17'00"	C		5.34 C		Class A
UNMK 84 DP 561706	PEG 70 DP 561706	ob234	161°17'00"	C		6.70 C		Class A
PEG 70 DP 561706	DISK 76 DP 561706	ob54	251°17'00"	C		16.10 C		Class A
DISK 76 DP 561706	PEG 69 DP 561706	ob183	251°17'00"	C		31.69 C		Class A
PEG 5i DP 551030	UNMK 41 DP 561706	ob154	251°17'00"	C		3.00 C		Class A
UNMK 41 DP 561706	PEG 36 DP 561706	ob198	251°17'00"	C		48.71 C		Class A
PEG 55 DP 561706	PEG 54 DP 561706	ob60	251°23'10"	C		7.51 C		Class A
PEG 54 DP 561706	UNMK 34 DP 561706	ob59	251°23'10"	C		3.00 C		Class A
UNMK 34 DP 561706	PEG 129 DP 561706	ob200	251°23'10"	C		8.30 C		Class A
PEG 129 DP 561706	PEG 33 DP 561706	ob219	251°23'10"	C		40.30 C		Class A
PEG 5i DP 551030	UNMK 136 DP 561706	ob155	161°17'00"	C		1.83 C		Class A
UNMK 105 DP 561706	PEG 54 DP 561706	ob207	161°17'00"	C		2.00 C		Class A
PEG 129 DP 561706	PEG 26 DP 561706	ob220	116°23'00"	C		8.06 C		Class A
PEG 26 DP 561706	PEG 27 DP 561706	ob62	188°58'00"	C		18.17 C		Class A
PEG 27 DP 561706	PEG 28 DP 561706	ob63	188°58'00"	C		10.42 C		Class A
PEG 28 DP 561706	PEG 29 DP 561706	ob65	178°27'00"	C		10.86 C		Class A
PEG 29 DP 561706	PEG 35 DP 561706	ob66	178°27'00"	C		10.67 C		Class A
PEG 35 DP 561706	PEG 30 DP 561706	ob79	178°27'00"	C		12.43 C		Class A
PEG 30 DP 561706	PEG 92 DP 561706	ob68	223°09'00"	C		25.10 C		Class A
PEG 27 DP 561706	PEG 193 DP 561706	ob64	267°43'00"	C		14.51 C		Class A
PEG 193 DP 561706	PEG 191 DP 561706	ob179	267°43'00"	C		24.57 C		Class A
PEG 29 DP 561706	PEG 192 DP 561706	ob67	267°44'30"	C		12.41 C		Class A

Mark and Vector

Survey Number DP 561706

Meridional Circuit North Taieri 2000

From	To	Code	Bearing	Adpt Surv	Bearing Correction	Distance	Adpt Surv	Class
PEG 192 DP 561706	PEG 194 DP 561706	ob178	267°44'30"	C		28.66 C		Class A
PEG 194 DP 561706	PEG (190) DP 8081	ob197	267°44'30"	C		17.22 C		Class A
UNMK 51 DP 561706	DISK 63 DP 561706	ob51	274°29'20"	C		8.86 C		Class A
DISK 63 DP 561706	PEG 56 DP 561706	ob193	274°29'20"	C		16.19 C		Class A
PEG 56 DP 561706	PEG 57 DP 561706	ob69	323°47'00"	C		8.79 C		Class A
PEG 57 DP 561706	DISK 58 DP 561706	ob71	8°58'00"	C		18.73 C		Class A
DISK 58 DP 561706	PEG 59 DP 561706	ob73	8°58'00"	C		9.02 C		Class A
PEG 59 DP 561706	UNMK 131 DP 561706	ob74	30°52'00"	C		2.19 C		Class A
UNMK 131 DP 561706	PEG 55 DP 561706	ob206	30°52'00"	C		9.80 C		Class A
UNMK 52 DP 561706	UNMK 77 DP 561706	ob53	274°03'30"	C		6.70 C		Class A
DISK 60 DP 561706	DISK 58 DP 561706	ob168	274°03'30"	C		20.38 C		Class A
PEG 57 DP 561706	PEG 28 DP 561706	ob72	268°27'00"	C		4.58 C		Class A
UNMK 49 DP 561706	UNMK 78 DP 561706	ob48	290°44'50"	C		6.54 C		Class A
PEG 75 DP 561706	PEG 72 DP 561706	ob182	290°44'50"	C		17.51 C		Class A
PEG 72 DP 561706	PEG 73 DP 561706	ob75	358°27'00"	C		14.27 C		Class A
PEG 73 DP 561706	PEG 74 DP 561706	ob77	37°32'00"	C		8.06 C		Class A
PEG 74 DP 561706	PEG 68 DP 561706	ob78	94°29'20"	C		15.17 C		Class A
PEG 68 DP 561706	UNMK 50 DP 561706	ob196	94°29'20"	C		9.03 C		Class A
PEG 35 DP 561706	PEG 73 DP 561706	ob80	88°27'00"	C		4.50 C		Class A
PEG 72 DP 561706	PEG 30 DP 561706	ob76	290°41'00"	C		4.86 C		Class A
IS 1 DP 551030	X KAIKORAI HILL	ob86	342°35'42"	M				
IS 5 DP 551030	X KAIKORAI HILL	ob118	342°12'51"	M				
IS 1 DP 561706	IS 5 DP 561706	ob88	260°42'00"	M		23.61 M		
IS 5 DP 561706	IT V DP 8472	ob156	295°01'00"	C		0.10 C		
IS 5 DP 551030	PEG IV DP 8472	ob119	227°53'30"	M		48.96 M		

Mark and Vector

Survey Number DP 561706

Meridional Circuit North Taieri 2000

From	To	Code	Bearing	Adpt Surv	Bearing Correction	Distance	Adpt Surv	Class
NAIL 2 DP 551030	UNMK 49 DP 561706	ob134	318°16'00"	C		19.71 C		
NAIL 3 DP 551030	UNMK 52 DP 561706	ob130	251°05'00"	C		15.40 C		
IS 1 DP 561706	PEG 92 DP 561706	ob89	180°57'50"	M		67.87 M		
IS 1 DP 561706	PEG 191 DP 561706	ob90	252°53'00"	M		23.35 M		
IS 1 DP 561706	PEG 33 DP 561706	ob91	277°22'00"	M		26.06 M		
IS 1 DP 561706	PEG 73 DP 561706	ob92	151°23'30"	M		42.17 M		
IS 1 DP 561706	PEG 35 DP 561706	ob93	157°05'30"	M		40.31 M		
IS 1 DP 561706	PEG 29 DP 561706	ob94	149°48'00"	M		30.62 M		
IS 1 DP 561706	PEG 192 DP 561706	ob95	173°39'00"	M		27.12 M		
IS 1 DP 561706	PEG 57 DP 561706	ob96	128°12'00"	M		25.06 M		
IS 1 DP 561706	PEG 28 DP 561706	ob97	135°56'00"	M		21.73 M		
IS 1 DP 561706	PEG 27 DP 561706	ob98	107°39'00"	M		17.56 M		
IS 1 DP 561706	PEG 193 DP 561706	ob99	159°15'00"	M		6.31 M		
IS 1 DP 561706	PEG 59 DP 561706	ob100	63°37'00"	M		26.81 M		
IS 1 DP 561706	PEG 56 DP 561706	ob101	132°14'00"	M		33.61 M		
IS 1 DP 561706	PEG 74 DP 561706	ob102	140°40'00"	M		39.60 M		
IS 1 DP 561706	PEG 194 DP 561706	ob103	222°23'30"	M		38.03 M		
IS 2 DP 561706	UNMK 51 DP 561706	ob170	46°30'00"	C		14.27 C		
IS 2 DP 561706	UNMK 50 DP 561706	ob171	79°14'00"	C		9.90 C		
IS 2 DP 561706	DISK 63 DP 561706	ob172	8°14'00"	M		10.63 M		
IS 2 DP 561706	PEG 68 DP 561706	ob173	15°52'00"	M		2.66 M		
IT III SO 18154	DISK 60 DP 561706	ob142	122°47'00"	M		21.11 M		
IT III SO 18154	DISK 58 DP 561706	ob143	194°28'00"	M		10.32 M		
IS 3 DP 561706	PEG 36 DP 561706	ob186	252°44'00"	M		52.45 M		

Mark and Vector

Survey Number DP 561706

Meridional Circuit North Taieri 2000

From	To	Code	Bearing	Adpt Surv	Bearing Correction	Distance	Adpt Surv	Class
IS 3 DP 561706	PEG 55 DP 561706	ob187	140°19'00"	M		18.99 M		
IS 3 DP 561706	PEG 26 DP 561706	ob188	176°24'00"	M		24.25 M		
IS 3 DP 561706	PEG 129 DP 561706	ob189	195°27'00"	M		21.39 M		
IS 3 DP 561706	PEG 54 DP 561706	ob190	163°35'00"	M		17.74 M		
IS 5 DP 551030	PEG 67 DP 561706	ob120	78°38'00"	M		2.84 M		
IS 5 DP 551030	PEG 70 DP 561706	ob121	150°13'00"	M		14.68 M		
IS 5 DP 551030	DISK 76 DP 561706	ob122	203°57'00"	M		19.59 M		
IS 5 DP 551030	PEG 69 DP 561706	ob123	233°30'30"	M		47.22 M		
PEG 70 DP 561706	UNMK 71 DP 561706	ob55	135°20'00"	C		2.29 C		Class A
UNMK 71 DP 561706	UNMK 41 DP 561706	ob201	161°17'00"	C		10.31 C		Class A
UNMK 41 DP 561706	UNMK 130 DP 561706	ob199	161°17'00"	C		1.85 C		Class A
UNMK 123 DP 561706	UNMK 34 DP 561706	ob214	161°17'00"	C		2.00 C		Class A
UNMK 61 DP 561706	UNMK 106 DP 561706	ob203	271°06'00"	C		6.16 C		Class A
UNMK 106 DP 561706	PEG 68 DP 561706	ob208	344°10'00"	C		8.95 C		Class A
DISK 63 DP 561706	UNMK 118 DP 561706	ob194	22°06'00"	C		9.21 C		Class A
UNMK 118 DP 561706	UNMK 64 DP 561706	ob212	94°29'00"	C		6.07 C		Class A
PEG 129 DP 561706	UNMK 124 DP 561706	ob221	26°20'00"	C		2.83 C		Class A
UNMK 124 DP 561706	UNMK 123 DP 561706	ob216	71°23'10"	C		6.30 C		Class A
UNMK 123 DP 561706	UNMK 105 DP 561706	ob215	71°23'10"	C		3.00 C		Class A
UNMK 112 DP 561706	UNMK 125 DP 561706	ob210	118°08'00"	C		9.12 C		Class A
UNMK 125 DP 561706	UNMK 128 DP 561706	ob217	74°56'00"	C		4.73 C		Class A
UNMK 128 DP 561706	PEG 5d DP 551030	ob218	358°07'00"	C		7.65 C		Class A
PEG 5d DP 551030	UNMK 117 DP 561706	ob147	341°02'00"	C		5.43 C		Class A
IT III SO 18154	IS 6 DP 561706	ob135	185°50'30"	M		20.65 M		
IS 6 DP 561706	IS 7 DP 561706	ob222	215°17'30"	M		25.97 M		

Mark and Vector

Survey Number DP 561706

Meridional Circuit North Taieri 2000

From	To	Code	Bearing	Adpt Surv	Bearing Correction	Distance	Adpt Surv	Class
IS 7 DP 561706	IS 1 DP 561706	ob223	344°15'30"	M		29.87 M		
IS 7 DP 561706	X KAIKORAI HILL	ob224	342°37'43"	M				
IS 7 DP 561706	PEG 30 DP 561706	ob225	159°08'00"	M		22.27 M		
IS 7 DP 561706	PEG 72 DP 561706	ob226	151°01'00"	M		25.76 M		
NAIL 2 DP 551030	DISK 60 DP 561706	ob131	346°36'10"	M		80.29 M		
NAIL 3 DP 551030	PEG 75 DP 561706	ob126	204°55'30"	M		69.94 M		
PEG XV DP 9684	UNMK 132 DP 561706	ob2	184°29'20"	A DP 551030	0°00'00"	2.03 C		Class A
UNMK 132 DP 561706	UNMK 80 DP 561706	ob227	270°35'00"	C		7.49 C		Class A
DISK 62 DP 561706	PEG 55 DP 561706	ob229	270°35'00"	C		14.03 C		Class A
PEG 68 DP 561706	DISK 63 DP 561706	ob195	5°42'30"	C		8.00 C		Class A
PEG 57 DP 561706	PEG 73 DP 561706	ob70	178°40'00"	C		21.53 C		Class A
PEG 26 DP 561706	UNMK 34 DP 561706	ob61	5°55'00"	C		6.26 C		Class A
UNMK 131 DP 561706	PEG 54 DP 561706	ob205	340°52'00"	C		6.37 C		Class A
PEG 5h DP 551030	UNMK 249 DP 561706	ob152	161°17'00"	A DP 551030	0°00'00"	0.84 C		Class A
UNMK 81 DP 561706	PEG 5i DP 551030	ob235	161°17'00"	A DP 551030	0°00'00"	12.37 C		Class A
UNMK 81 DP 561706	PEG 70 DP 561706	ob236	251°17'00"	C		4.00 C		Class A
UNMK 4 DP 551030	UNMK 2 DP 551030	ob42	29°05'00"	A DP 551030	0°00'00"	7.03 A DP 551030		Class A
UNMK 122 DP 561706	UNMK 84 DP 561706	ob231	161°17'00"	C		2.00 C		Class A
UNMK 249 DP 561706	UNMK 81 DP 561706	ob230	161°17'00"	A DP 551030	0°00'00"	6.69 C		Class A
UNMK 130 DP 561706	UNMK 135 DP 561706	ob237	161°17'00"	C		2.00 C		Class A
UNMK 135 DP 561706	UNMK 138 DP 561706	ob239	161°17'00"	C		9.85 C		Class A
UNMK 138 DP 561706	UNMK 139 DP 561706	ob241	161°17'00"	C		2.00 C		Class A
UNMK 139 DP 561706	UNMK 123 DP 561706	ob243	161°17'00"	C		1.33 C		Class A
UNMK 136 DP 561706	UNMK 137 DP 561706	ob245	161°17'00"	C		2.00 C		Class A

Mark and Vector

Survey Number DP 561706

Meridional Circuit North Taieri 2000

From	To	Code	Bearing	Adpt Surv	Bearing Correction	Distance	Adpt Surv	Class
UNMK 137 DP 561706	UNMK 140 DP 561706	ob246	161°17'00"	C		9.85 C		Class A
UNMK 140 DP 561706	UNMK 141 DP 561706	ob247	161°17'00"	C		2.00 C		Class A
UNMK 141 DP 561706	UNMK 105 DP 561706	ob248	161°17'00"	C		1.36 C		Class A
UNMK 122 DP 561706	UNMK 126 DP 561706	ob232	71°17'00"	C		4.00 C		Class A
UNMK 126 DP 561706	PEG 5h DP 551030	ob250	161°17'00"	C		1.16 C		Class A
UNMK 84 DP 561706	UNMK 249 DP 561706	ob233	71°17'00"	C		4.00 C		Class A
UNMK 130 DP 561706	UNMK 136 DP 561706	ob238	70°54'00"	C		3.00 C		Class A
UNMK 135 DP 561706	UNMK 137 DP 561706	ob240	70°54'00"	C		3.00 C		Class A
UNMK 138 DP 561706	UNMK 140 DP 561706	ob242	70°50'00"	C		3.00 C		Class A
UNMK 139 DP 561706	UNMK 141 DP 561706	ob244	70°50'00"	C		3.00 C		Class A
UNMK 141 DP 561706	UNMK 108 DP 561706	ob249	84°36'00"	C		7.36 C		Class A
UNMK 108 DP 561706	UNMK 109 DP 561706	ob251	86°44'00"	C		16.79 C		Class A
UNMK 80 DP 561706	DISK 62 DP 561706	ob254	270°35'00"	C		1.81 C		Class A
UNMK 109 DP 561706	UNMK 80 DP 561706	ob252	181°03'00"	C		2.60 C		Class A
NAIL 3 DP 551030	UNMK 132 DP 561706	ob125	321°08'00"	C		20.59 C		
IS 3 DP 561706	DISK 62 DP 561706	ob184	119°26'00"	M		30.04 M		
UNMK 78 DP 561706	PEG 75 DP 561706	ob255	290°44'50"	C		5.72 C		Class A
UNMK 77 DP 561706	DISK 60 DP 561706	ob257	274°03'30"	C		2.24 C		Class A
UNMK 234 DP 561706	UNMK 3 DP 551030	ob259	71°28'00"	A	DP 551030	0°00'00"	8.52 C	Class A
UNMK 78 DP 561706	UNMK 106 DP 561706	ob256	1°06'20"	C		19.08 C		Class A
UNMK 118 DP 561706	UNMK 77 DP 561706	ob213	2°20'00"	C		16.75 C		Class A
UNMK 77 DP 561706	UNMK 80 DP 561706	ob258	2°20'00"	C		20.65 C		Class A
UNMK 109 DP 561706	UNMK 234 DP 561706	ob253	8°05'20"	C		24.36 C		Class A
UNMK 234 DP 561706	UNMK 125 DP 561706	ob260	343°56'00"	C		18.20 C		Class A

Mark and Vector

Survey Number DP 561706

Meridional Circuit North Taieri 2000

From	To	Code	Bearing	Adpt Surv	Bearing Correction	Distance	Adpt Surv	Class
UNMK 3 DP 551030	UNMK 128 DP 561706	ob146	331°54'00" C			18.15 C		Class A

Mark Name	Mark Condition	Description
IS 1 DP 551030		now destroyed
IS 1 DP 561706		d0.2 in grass
IS 2 DP 561706		Dn 0.2
IS 3 DP 561706		Dn 0.2
IS 5 DP 551030		d0.6 in grass
IS 5 DP 561706		IS Va DP 8472 disturbed
IS 6 DP 561706		Dn 0.2
IS 7 DP 561706		Dn 0.2
IT 4 DP 561706		IT IV DP 8081 disturbed
IT III SO 18154		Dn 0.2
IT III SO 21099		d0.1 in berm
IT IV DP 8081		d0.17 in road
NAIL 2 DP 551030		Flush in seal
NAIL 3 DP 551030		Flush in FP
NAIL 4 DP 551030		Flush in FP

*** End of Report ***

Schedule / Memorandum

Land Registration District

Otago

Survey Number

LT 561706

Territorial Authority (the Council)

Dunedin City

Schedule of Existing Easements

Last Edited: 16 Aug 2022 17:17:29

<u>Purpose</u>	<u>Shown</u>	<u>Burdened Land</u> (<u>Servient Tenement</u>)	<u>Creating Document Reference</u>
Right of Way	S, N	Lot 11	EI 11897103.2
Right to convey water, electricity, telecommunications	S, N	Lot 11	EI 11897103.2
Right to drain water, sewage	S, N	Lot 11	EI 11897103.2
Right to drain sewage	T	Lot 3	EI 10496153.1

Memorandum of Easements

Last Edited: 07 Dec 2022 20:33:33

<u>Purpose</u>	<u>Shown</u>	<u>Burdened Land</u> (<u>Servient Tenement</u>)	<u>Benefited Land</u> (<u>Dominant Tenement</u>)
Right of Way	A	Lot 3	Lot 2, Lot 4
	Q, S, N, Y, C	Lot 11	Lot 12
	F, Z, AA	Lot 13	Lot 6, Lot 7, Lot 8, Lot 9
	B, O, P	Lot 14	Lot 2, Lot 3, Lot 4, Lot 5, Lot 6, Lot 7, Lot 8, Lot 9, Lot 10
Right to drain water	AB, D	Lot 2	Lot 3
	M	Lot 1 DP 551030	Lot 2, Lot 3, Lot 4, Lot 5, Lot 6, Lot 7, Lot 8, Lot 9, Lot 10, Lot 11, Lot 12, Lot 13, Lot 14
	B, O	Lot 14	Lot 4, Lot 5
	P	Lot 14	Lot 2, Lot 3, Lot 4, Lot 5
	E, AC	Lot 10	Lot 2, Lot 3, Lot 4, Lot 5, Lot 14
	AD	Lot 9	Lot 2, Lot 3, Lot 4, Lot 5, Lot 10, Lot 14
	AE	Lot 8	Lot 2, Lot 3, Lot 4, Lot 5, Lot 6, Lot 7, Lot 9, Lot 10, Lot 13, Lot 14
	K	Lot 8	Lot 6, Lot 7, Lot 13
	Z	Lot 13	Lot 6
	I, J	Lot 7	Lot 6
AF	Lot 1 DP 551030	Lot 2, Lot 3, Lot 4, Lot 5, Lot 6, Lot 7, Lot 8, Lot 9, Lot 10, Lot 13, Lot 14	
Right to drain sewage	Z	Lot 13	Lot 6
	I, J	Lot 7	Lot 6
	V, W	Lot 7	Lot 8
	Y	Lot 11	Lot 12
	F	Lot 13	Lot 5, Lot 6, Lot 9, Lot 10
	B	Lot 14	Lot 2, Lot 3, Lot 4, Lot 5
	O	Lot 14	Lot 2
Right to convey water, electricity, telecommunications	F, Z, AA	Lot 13	Lot 5, Lot 6, Lot 7, Lot 8, Lot 9, Lot 10
	B, O, P	Lot 14	Lot 2, Lot 3, Lot 4, Lot 5, Lot 6, Lot 7, Lot 8, Lot 9, Lot 10
	A	Lot 3	Lot 2
Right to convey electricity, telecommunications	J, U, V, L, W, X	Lot 7	Lot 2, Lot 3, Lot 4, Lot 5, Lot 6, Lot 8, Lot 9, Lot 10
	R, C, Y, Q, S	Lot 11	Lot 2, Lot 3, Lot 4, Lot 5, Lot 6, Lot 7, Lot 8, Lot 9, Lot 10, Lot 12

Schedule / Memorandum

Land Registration District

Otago

Survey Number

LT 561706

Territorial Authority (the Council)

Dunedin City

Memorandum of Easements

Last Edited: 07 Dec 2022 20:33:33

<u>Purpose</u>	<u>Shown</u>	<u>Burdened Land</u> <u>(Servient Tenement)</u>	<u>Benefited Land</u> <u>(Dominant Tenement)</u>
Right to convey electricity	N	Lot 11	Lot 2, Lot 3, Lot 4, Lot 5, Lot 6, Lot 7, Lot 8, Lot 9, Lot 10, Lot 12

Memorandum of Easements in Gross

Last Edited: 17 Aug 2022 15:41:38

<u>Purpose</u>	<u>Shown</u>	<u>Burdened Land</u> <u>(Servient Tenement)</u>	<u>Grantee</u>
Right to drain sewage	B	Lot 14	Dunedin City Council
	F	Lot 13	Dunedin City Council
	J, U, V, W, L, X	Lot 7	Dunedin City Council
	R, C, Y, Q, S, N	Lot 11	Dunedin City Council
Right to drain water	P	Lot 14	Dunedin City Council
	E	Lot 10	Dunedin City Council
	D	Lot 2	Dunedin City Council
Right to convey water	P, O, B	Lot 14	Dunedin City Council

Schedule of Easements in Gross

Last Edited: 30 Nov 2022 15:58:12

<u>Purpose</u>	<u>Shown</u>	<u>Burdened Land</u> <u>(Servient Tenement)</u>	<u>Grantee</u>
Right to convey telecommunications	A	Lot 3	Chorus New Zealand Ltd
	B	Lot 14	Chorus New Zealand Ltd
	F, Z, AA	Lot 13	Chorus New Zealand Ltd
	J, U, V, W, X, L	Lot 7	Chorus New Zealand Ltd
	R, C, Y, Q, S, N	Lot 11	Chorus New Zealand Ltd
Right to convey electricity	A	Lot 3	Aurora Energy Limited
	B	Lot 14	Aurora Energy Limited
	F, Z, AA	Lot 13	Aurora Energy Limited
	J, U, V, W, X, L	Lot 7	Aurora Energy Limited
	R, C, Y, Q, S	Lot 11	Aurora Energy Limited

Amalgamation Conditions

Last Edited: 28 Nov 2022 14:19:10

That Lot 13 hereon (legal access) be held as to four undivided $\frac{1}{4}$ shares by the owners of Lots 6 to 9 hereon as tenants in common and that individual records of title be issued in accordance therewith (see CSN Request 1670336).

Schedule / Memorandum

Land Registration District

Otago

Survey Number

LT 561706

Territorial Authority (the Council)

Dunedin City

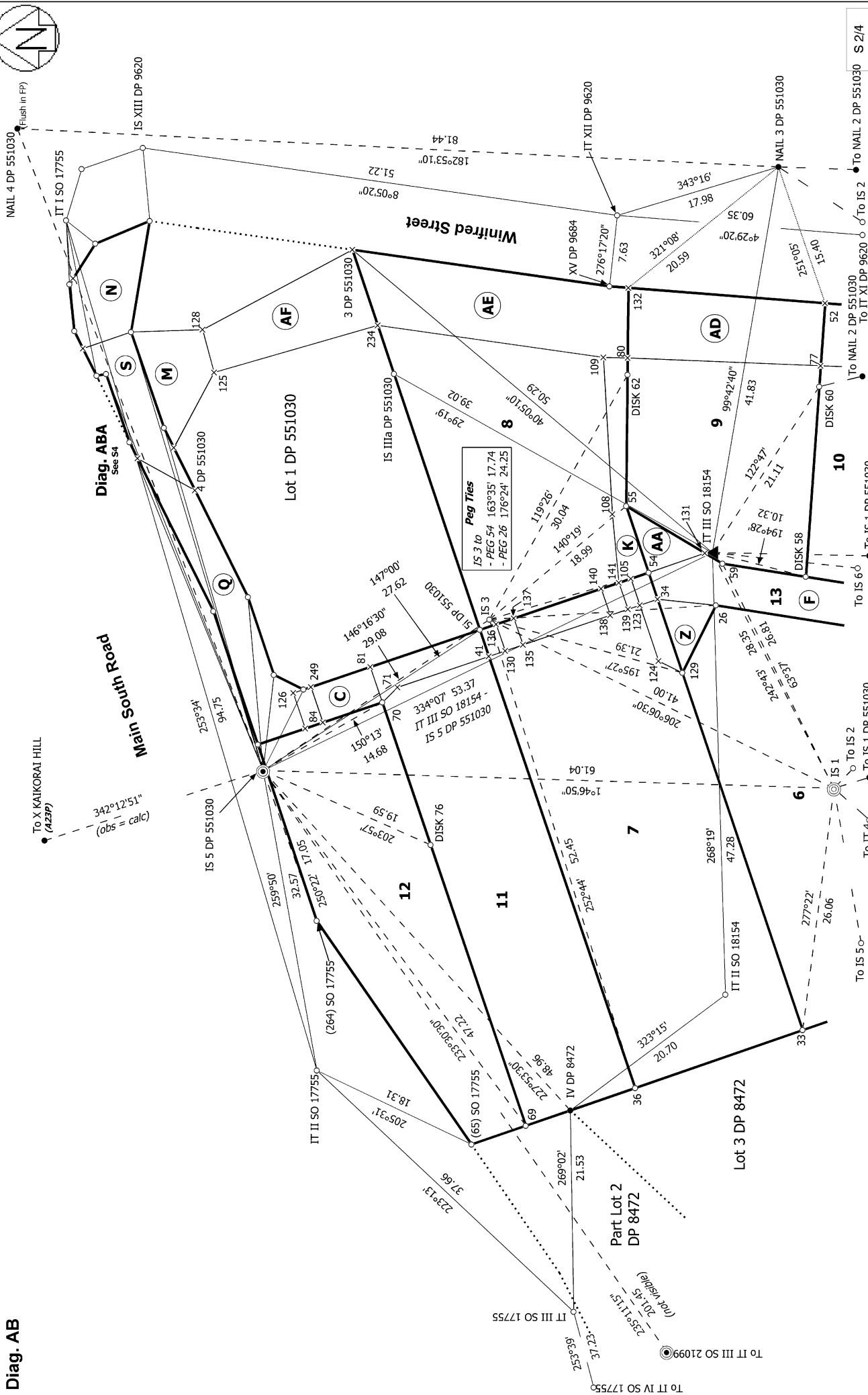
Amalgamation Conditions

Last Edited: 28 Nov 2022 14:19:48

That Lot 14 hereon (legal access) be held as to nine undivided 1/9 shares by the owners of Lots 2 - 10 hereon as tenants in common and that individual records of title be issued in accordance therewith (see CSN Request 1670336).



Diag. AB



Land District: Otago	Surveyor: Michael Tyler Hager	Record of Survey DP 561706
Digitally Generated Plan	Firm: Terramark Ltd	Deposited on: 26/06/2023
Generated on: 18/07/2023 07:44am Page 19 of 26	Date of Survey: 21/06/2021	

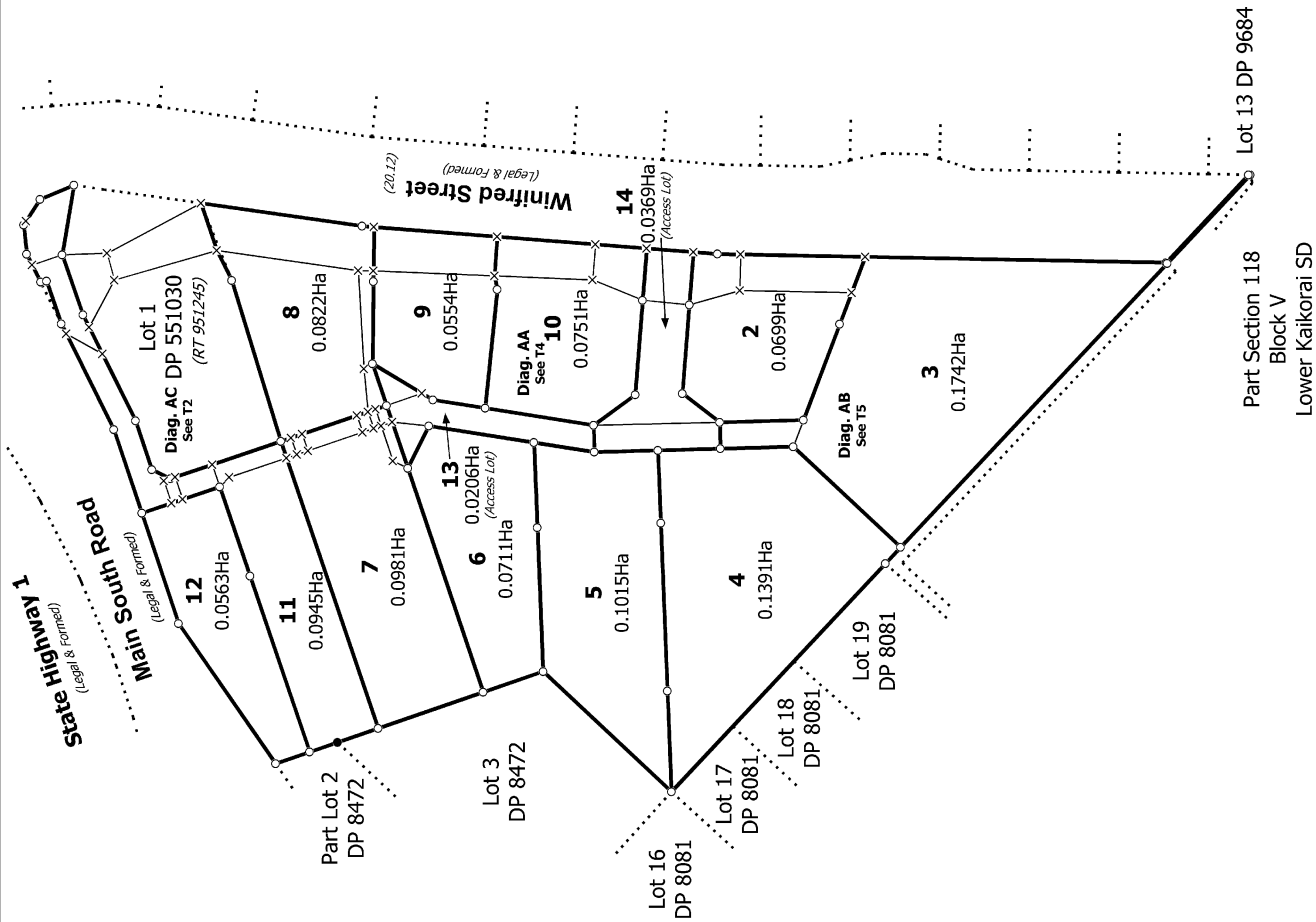
Lots 2-14 Being a Subdivision of Lot 2 DP 551030 and Easement over Lot 1 DP 551030

Lot 1 DP 551030

Lot 2 DP 8472
Part Lot 2 DP 8472
Lot 3 DP 8472

Diag. ABA See 54
Main South Road
Winifred Street
To X KAIKORAI HILL (A23FP)
To IT I SO 17755
To IT II SO 17755
To IT III SO 17755
To IT IV SO 17755
To IT V SO 17755
To IT VI SO 17755
To IT VII SO 17755
To IT VIII SO 17755
To IT IX SO 17755
To IT X SO 17755
To IT XI DP 9620
To IT XII DP 9620
To IT XIII DP 9620
To IT XIV DP 9620
To IT XV DP 9684
To IT XVI DP 9620
To IT XVII DP 9620
To IT XVIII DP 9620
To IT XIX DP 9620
To IT XX DP 9620
To IT XXI DP 9620
To IT XXII DP 9620
To IT XXIII DP 9620
To IT XXIV DP 9620
To IT XXV DP 9620
To IT XXVI DP 9620
To IT XXVII DP 9620
To IT XXVIII DP 9620
To IT XXIX DP 9620
To IT XXX DP 9620
To IT XXXI DP 9620
To IT XXXII DP 9620
To IT XXXIII DP 9620
To IT XXXIV DP 9620
To IT XXXV DP 9620
To IT XXXVI DP 9620
To IT XXXVII DP 9620
To IT XXXVIII DP 9620
To IT XXXIX DP 9620
To IT XL DP 9620
To IT XLI DP 9620
To IT XLII DP 9620
To IT XLIII DP 9620
To IT XLIV DP 9620
To IT XLV DP 9620
To IT XLVI DP 9620
To IT XLVII DP 9620
To IT XLVIII DP 9620
To IT XLIX DP 9620
To IT L DP 9620
To IT LI DP 9620
To IT LII DP 9620
To IT LIII DP 9620
To IT LIV DP 9620
To IT LV DP 9620
To IT LVI DP 9620
To IT LVII DP 9620
To IT LVIII DP 9620
To IT LIX DP 9620
To IT LX DP 9620
To IT LXI DP 9620
To IT LXII DP 9620
To IT LXIII DP 9620
To IT LXIV DP 9620
To IT LXV DP 9620
To IT LXVI DP 9620
To IT LXVII DP 9620
To IT LXVIII DP 9620
To IT LXIX DP 9620
To IT LXX DP 9620
To IT LXXI DP 9620
To IT LXXII DP 9620
To IT LXXIII DP 9620
To IT LXXIV DP 9620
To IT LXXV DP 9620
To IT LXXVI DP 9620
To IT LXXVII DP 9620
To IT LXXVIII DP 9620
To IT LXXIX DP 9620
To IT LXXX DP 9620
To IT LXXXI DP 9620
To IT LXXXII DP 9620
To IT LXXXIII DP 9620
To IT LXXXIV DP 9620
To IT LXXXV DP 9620
To IT LXXXVI DP 9620
To IT LXXXVII DP 9620
To IT LXXXVIII DP 9620
To IT LXXXIX DP 9620
To IT XLXX DP 9620
To IT XLXXI DP 9620
To IT XLXXII DP 9620
To IT XLXXIII DP 9620
To IT XLXXIV DP 9620
To IT XLXXV DP 9620
To IT XLXXVI DP 9620
To IT XLXXVII DP 9620
To IT XLXXVIII DP 9620
To IT XLXXIX DP 9620
To IT XLXXX DP 9620
To IT XLXXXI DP 9620
To IT XLXXXII DP 9620
To IT XLXXXIII DP 9620
To IT XLXXXIV DP 9620
To IT XLXXXV DP 9620
To IT XLXXXVI DP 9620
To IT XLXXXVII DP 9620
To IT XLXXXVIII DP 9620
To IT XLXXXIX DP 9620
To IT XLXXXX DP 9620
To IT XLXXXXI DP 9620
To IT XLXXXXII DP 9620
To IT XLXXXXIII DP 9620
To IT XLXXXXIV DP 9620
To IT XLXXXXV DP 9620
To IT XLXXXXVI DP 9620
To IT XLXXXXVII DP 9620
To IT XLXXXXVIII DP 9620
To IT XLXXXXIX DP 9620
To IT XLXXXXX DP 9620

Diag. A



Subject to Part IVa Conservation Act 1987

Land District: Otago

Digitally Generated Plan

Generated on: 18/07/2023 07:44am | Page 22 of 26

Lots 2-14 Being a Subdivision of Lot 2 DP 551030 and Easement over Lot 1 DP 551030

Surveyor: Michael Tyler Hager
Firm: Terramark Ltd
Date of Survey: 21/06/2021

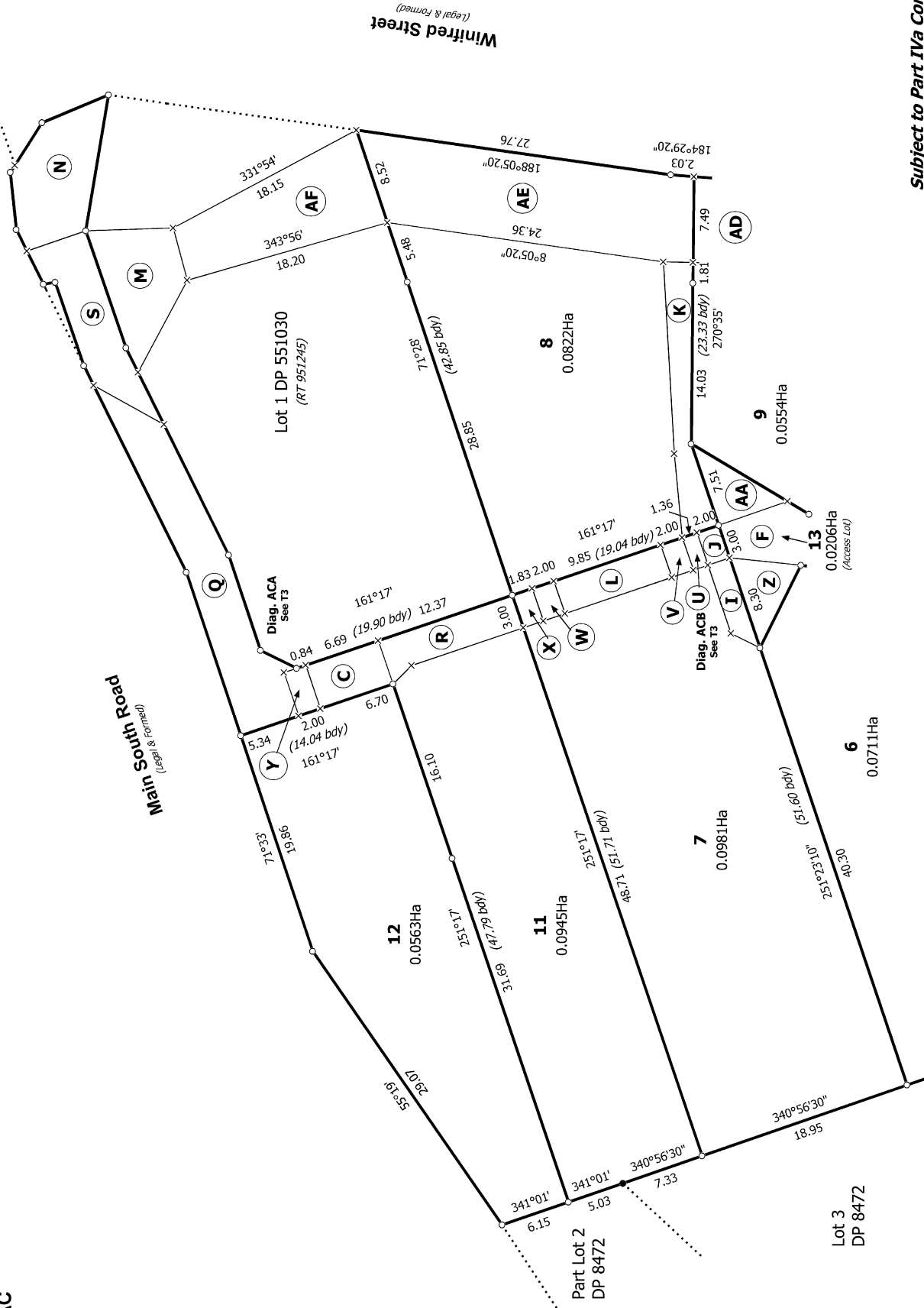
Record of Survey
DP 561706

Deposited on: 26/06/2023

T 1/5



Diag. AC



Subject to Part IVa Conservation Act 1987

T 2/5

Land District: Otago

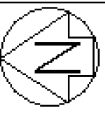
Digitally Generated Plan
Generated on: 18/07/2023 07:44am Page 23 of 26

Lots 2-14 Being a Subdivision of Lot 2 DP 551030 and Easement over Lot 1 DP 551030

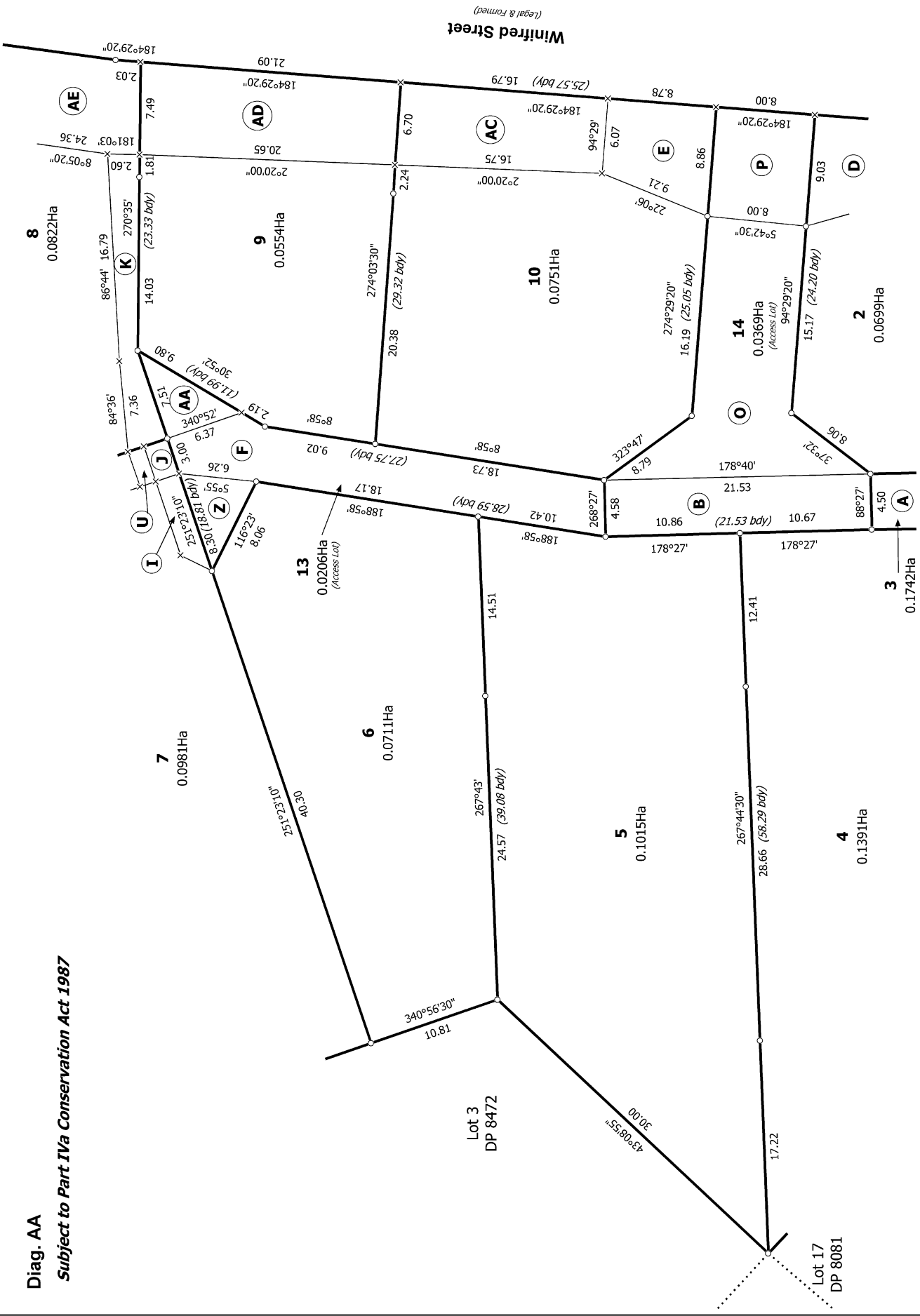
Surveyor: Michael Tyler Hager
Firm: Terramark Ltd
Date of Survey: 21/06/2021

Record of Survey
DP 561706

Deposited on: 26/06/2023

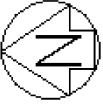


Diag. AA
Subject to Part IVa Conservation Act 1987

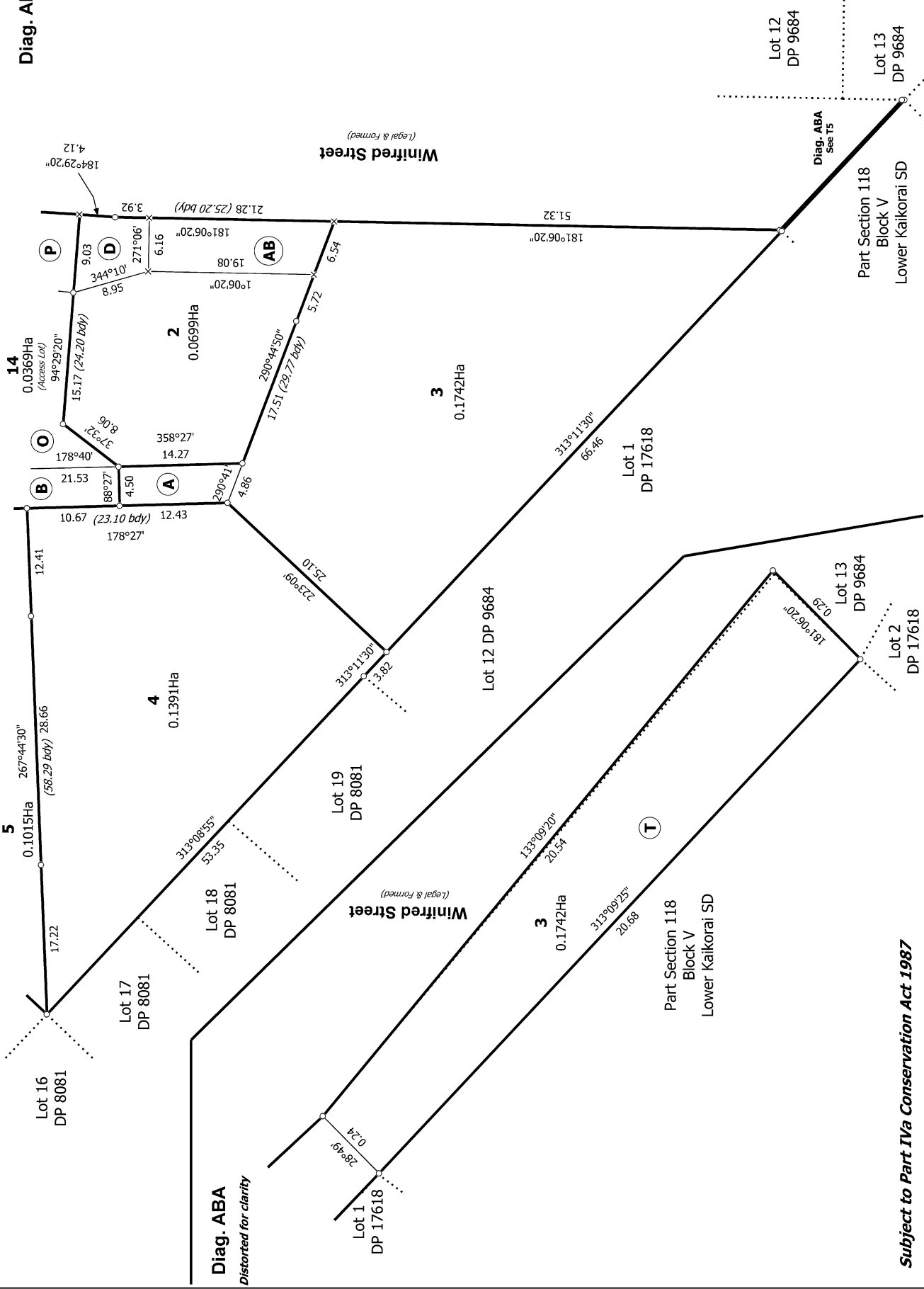


T 4/5

Land District: Otago Digitally Generated Plan <small>Generated on: 18/07/2023 07:44am Page 25 of 26</small>	Lots 2-14 Being a Subdivision of Lot 2 DP 551030 and Easement over Lot 1 DP 551030	Surveyor: Michael Tyler Hager Firm: Terramark Ltd Date of Survey: 21/06/2021	Record of Survey DP 561706 Deposited on: 26/06/2023
----------------------------------------------------------------------------------------------------------------------------	-------------------------------------------------------------------------------------------	------------------------------------------------------------------------------------	------------------------------------------------------------------



Diag. AB



Subject to Part IVa Conservation Act 1987

Land District: Otago

Digitally Generated Plan

Generated on: 18/07/2023 07:44am | Page 26 of 26

Lots 2-14 Being a Subdivision of Lot 2 DP 551030 and Easement over Lot 1 DP 551030

Surveyor: Michael Tyler Hager
Firm: Terramark Ltd
Date of Survey: 21/06/2021

Record of Survey
DP 561706

Deposited on: 26/06/2023

T 5/5