



Record of Survey - DP 553238

Survey Number DP 553238
Surveyor Reference 72801 PCL Gwendoline Ave
Surveyor Gary Jackson Blyth
Survey Firm Fraser Thomas Ltd (Auckland)
Surveyor Declaration I Gary Jackson Blyth, being a licensed cadastral surveyor, certify that--
 (a) this dataset provided by me and its related survey are accurate, correct and in accordance with the Cadastral Survey Act 2002 and Cadastral Survey Rules 2021; and
 (b) the survey was undertaken by me or under my personal direction.
 Declared on 13 Mar 2024 04:24 PM

Survey Details

Dataset Description PLAN OF UNITS ON LOT 7 DP 548728
Purpose Standard Unit Plan
Status Deposited **Type** Survey
Land District North Auckland **Survey Class** Class A
Meridional Circuit Mount Eden 2000 **Vertical Datum** None

Survey Dates

Surveyed Date 04/11/2020 **Certified Date** 13/03/2024
Submitted Date 13/03/2024 16:24:49 **Survey Approval Date** 14/03/2024
Deposit Date 09/04/2024

Referenced Surveys

Survey Number	Land District	Bearing Correction
DP 548728	North Auckland	0°00'00"

Territorial Authorities

Auckland Council

Comprised In

RT 960645

Created Parcels

Parcels	Parcel Intent	Area	RT Reference
Principal Unit 1 Deposited Plan 553238	Principal Unit		969814
Principal Unit 2 Deposited Plan 553238	Principal Unit		969815
Principal Unit 3 Deposited Plan 553238	Principal Unit		969816
Principal Unit 4 Deposited Plan 553238	Principal Unit		969817
Principal Unit 5 Deposited Plan 553238	Principal Unit		969818
Principal Unit 6 Deposited Plan 553238	Principal Unit		969819
Principal Unit 7 Deposited Plan 553238	Principal Unit		969820
Principal Unit 8 Deposited Plan 553238	Principal Unit		969821
Principal Unit 9 Deposited Plan 553238	Principal Unit		969822
Principal Unit 10 Deposited Plan 553238	Principal Unit		969823
Principal Unit 11 Deposited Plan 553238	Principal Unit		969824
Principal Unit 12 Deposited Plan 553238	Principal Unit		969825



Record of Survey - DP 553238

Created Parcels

Parcels	Parcel Intent	Area	RT Reference
Accessory Unit 13 Deposited Plan 553238	Accessory Unit		969814
Accessory Unit 14 Deposited Plan 553238	Accessory Unit		969817
Accessory Unit 15 Deposited Plan 553238	Accessory Unit		969820
Accessory Unit 16 Deposited Plan 553238	Accessory Unit		969815
Accessory Unit 19 Deposited Plan 553238	Accessory Unit		969818
Accessory Unit 17 Deposited Plan 553238	Accessory Unit		969816
Accessory Unit 18 Deposited Plan 553238	Accessory Unit		969823
Accessory Unit 20 Deposited Plan 553238	Accessory Unit		969819
Accessory Unit 21 Deposited Plan 553238	Accessory Unit		969821
Accessory Unit 22 Deposited Plan 553238	Accessory Unit		969822
Accessory Unit 23 Deposited Plan 553238	Accessory Unit		969824
Accessory Unit 24 Deposited Plan 553238	Accessory Unit		969825
Total Area		<hr/> 0.0000 Ha	

SURVEYED	FA	17/03/2020	DRAWN	FA	24/06/2022
PLAN REVISION TABLE					
NO.	CHANGES	CHECKED	DATE		

NOTES

1. PU - Principal Unit
2. AU - Accessory Unit
3. CMP - Centre of Wall Produced
4. FCF - Face of concrete floor
5. RW - Exposed face of retaining wall posts
6. - - - - - indicates the extent of the buildings
7. Principal and Accessory Unit boundaries are Permanent Structure boundaries unless otherwise shown and dimensions.
8. All Principal and Accessory Unit boundaries project vertically and horizontally to the Unit extents.
9. Principal Unit boundaries are the centre of walls and penetrations unless otherwise shown.
10. The lower limit of AU's 13 - 24 is 0.50m below ground floor level of PU1 and the upper limit is 4.00m above ground floor level of PU1.
11. AU's 13 - 24 are carports measuring 2.50m wide by 5.00m deep.
12. See DP 548728 for existing easement dimensions.

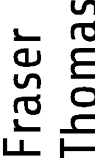
GROUND FLOOR SHEET 1 OF 4

COMPRISED IN CT:960645

PRECISION CONSTRUCTION LTD

PROJECT
10 GWENDOLINE AVE
TE ATATU

TITLE
PLAN OF UNITS
ON LOT 7 DP 548728



Fraser Thomas
ENGINEERS • RESOURCE MANAGERS • SURVEYORS
LEVEL 1, 21 EL KODAK DRIVE, HIGHTHROOK
PO BOX 204006 HIGHTHROOK
TEL +64-9-278 7078
EMAIL: SURVEY@FTL.CO.NZ

SCALE: 1:200

DATE: 24/06/2022

DRAWN BY: FA

SHEET: 1 OF 4

DP 553238

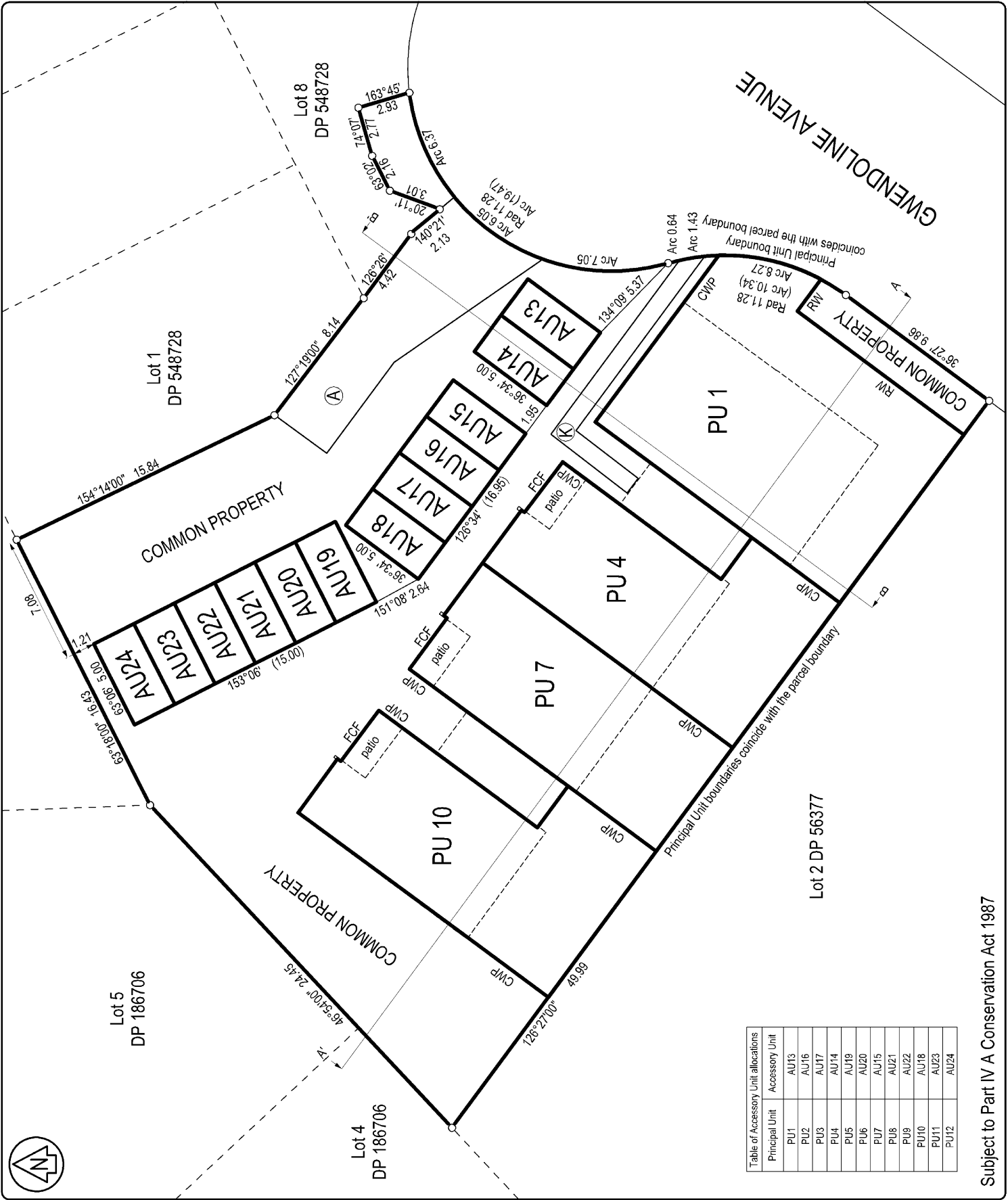


Table of Accessory Unit allocations

Principal Unit	Accessory Unit
PU1	AU13
PU2	AU16
PU3	AU17
PU4	AU14
PU5	AU19
PU6	AU20
PU7	AU15
PU8	AU21
PU9	AU22
PU10	AU18
PU11	AU23
PU12	AU24

SURVEYED	FA	17/03/2020	DRAWN	FA	24/06/2022
PLAN REVISION TABLE					
NO.	CHANGES	CHECKED	DATE		

NOTES

1. PU - Principal Unit
2. AU - Accessory Unit
3. CMP - Centre of Wall Produced
4. FCF - Face of concrete floor
5. RW - Exposed face of retaining wall posts
6. - - - - - indicates the extent of the buildings
7. Principal and Accessory Unit boundaries are Permanent Structure boundaries unless otherwise shown and dimensioned.
8. All Principal and Accessory Unit boundaries project vertically and horizontally to the Unit extents.
9. Principal Unit boundaries are the centre of walls and penetrations unless otherwise shown.
10. The lower limit of AU's 13 - 24 is 0.50m below ground floor level of PU1 and the upper limit is 4.00m above ground floor level of PU1.
11. AU's 13 - 24 are carports measuring 2.50m wide by 5.00m deep.
12. See DP 548728 for existing easement dimensions.

CLIENT

PRECISION CONSTRUCTION LTD

PROJECT

10 GWENDOLINE AVE
TE ATATU

TITLE

PLAN OF UNITS
ON LOT 7 DP 548728

Fraser Thomas

ENGINEERS • RESOURCE MANAGERS • SURVEYORS

LEVEL 1, 21 EL KODAR DRIVE, HIGHBROOK
PO BOX 204006, HIGHBROOK
TEL: +64-9-278 7078
EMAIL: SURVEY@FTL.CO.NZ

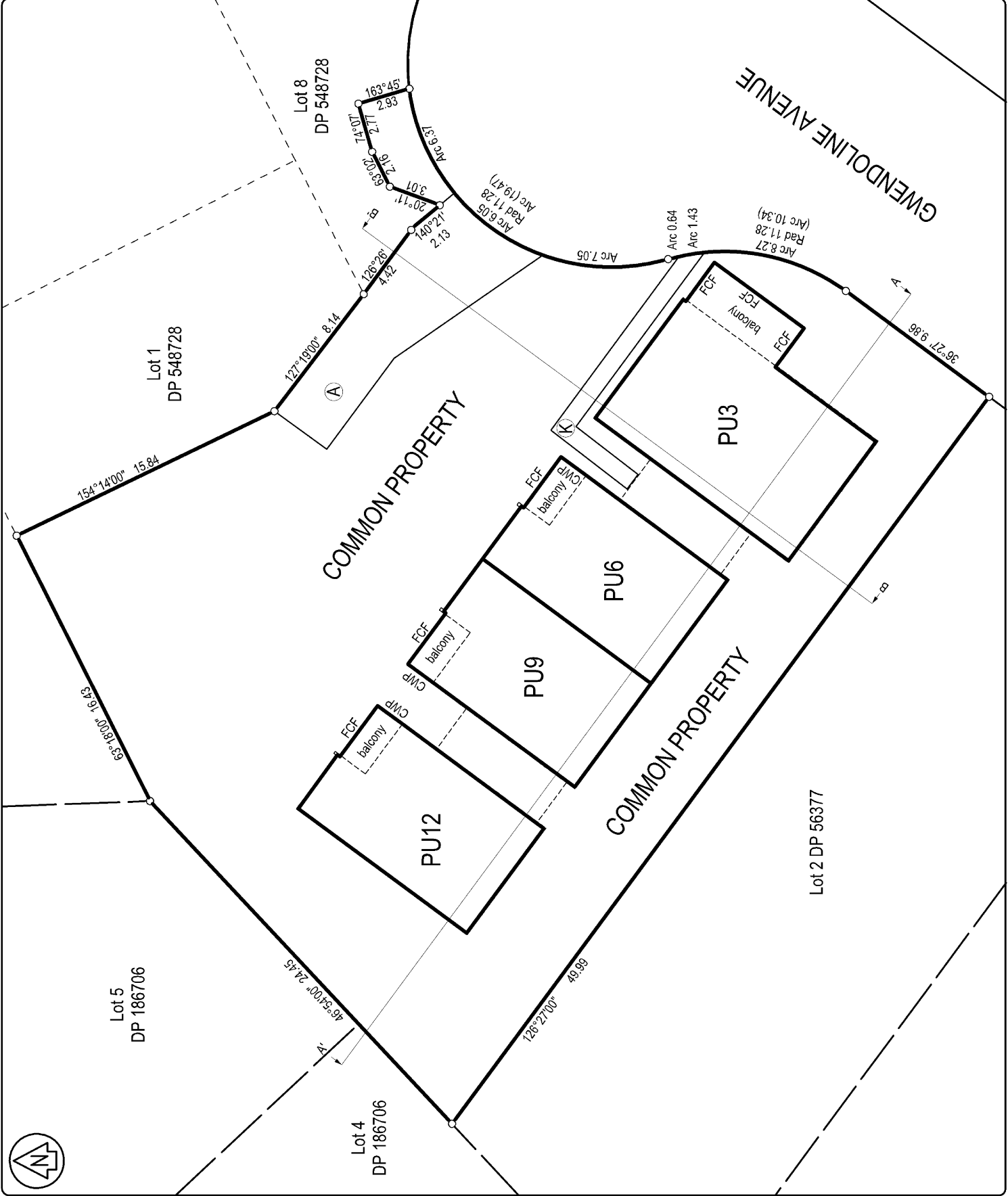
SCALE: 1:200

CAD FILE NO.: P:\12_2020\72801_Unit7_Site.pcd - 72801-UT-3.dwg

DRAWING NO.: 72801-UT-3

SHEET: 1 of 1

DP 553238



SURVEYED	FA	17/08/2020	DRAWN	FA	24/06/2022
PLAN REVISION TABLE					
NO.	CHANGES	CHECKED	DATE		

NOTES

1. PU - Principal Unit
2. AU - Accessory Unit
3. CMP - Centre of Wall Produced
4. FCF - Face of concrete floor
5. RV - Exposed face of retaining wall posts
6. 2, 3, 4, 5, 6, 7, 8, 9, 10, 11, 12, 13, 14, 15, 16, 17, 18, 19, 20, 21, 22, 23, 24, 25, 26, 27, 28, 29, 30, 31, 32, 33, 34, 35, 36, 37, 38, 39, 40, 41, 42, 43, 44, 45, 46, 47, 48, 49, 50, 51, 52, 53, 54, 55, 56, 57, 58, 59, 60, 61, 62, 63, 64, 65, 66, 67, 68, 69, 70, 71, 72, 73, 74, 75, 76, 77, 78, 79, 80, 81, 82, 83, 84, 85, 86, 87, 88, 89, 90, 91, 92, 93, 94, 95, 96, 97, 98, 99, 100, 101, 102, 103, 104, 105, 106, 107, 108, 109, 110, 111, 112, 113, 114, 115, 116, 117, 118, 119, 120, 121, 122, 123, 124, 125, 126, 127, 128, 129, 130, 131, 132, 133, 134, 135, 136, 137, 138, 139, 140, 141, 142, 143, 144, 145, 146, 147, 148, 149, 150, 151, 152, 153, 154, 155, 156, 157, 158, 159, 160, 161, 162, 163, 164, 165, 166, 167, 168, 169, 170, 171, 172, 173, 174, 175, 176, 177, 178, 179, 180, 181, 182, 183, 184, 185, 186, 187, 188, 189, 190, 191, 192, 193, 194, 195, 196, 197, 198, 199, 200, 201, 202, 203, 204, 205, 206, 207, 208, 209, 210, 211, 212, 213, 214, 215, 216, 217, 218, 219, 220, 221, 222, 223, 224, 225, 226, 227, 228, 229, 230, 231, 232, 233, 234, 235, 236, 237, 238, 239, 240, 241, 242, 243, 244, 245, 246, 247, 248, 249, 250, 251, 252, 253, 254, 255, 256, 257, 258, 259, 260, 261, 262, 263, 264, 265, 266, 267, 268, 269, 270, 271, 272, 273, 274, 275, 276, 277, 278, 279, 280, 281, 282, 283, 284, 285, 286, 287, 288, 289, 290, 291, 292, 293, 294, 295, 296, 297, 298, 299, 300, 301, 302, 303, 304, 305, 306, 307, 308, 309, 310, 311, 312, 313, 314, 315, 316, 317, 318, 319, 320, 321, 322, 323, 324, 325, 326, 327, 328, 329, 330, 331, 332, 333, 334, 335, 336, 337, 338, 339, 340, 341, 342, 343, 344, 345, 346, 347, 348, 349, 350, 351, 352, 353, 354, 355, 356, 357, 358, 359, 360, 361, 362, 363, 364, 365, 366, 367, 368, 369, 370, 371, 372, 373, 374, 375, 376, 377, 378, 379, 380, 381, 382, 383, 384, 385, 386, 387, 388, 389, 390, 391, 392, 393, 394, 395, 396, 397, 398, 399, 400, 401, 402, 403, 404, 405, 406, 407, 408, 409, 410, 411, 412, 413, 414, 415, 416, 417, 418, 419, 420, 421, 422, 423, 424, 425, 426, 427, 428, 429, 430, 431, 432, 433, 434, 435, 436, 437, 438, 439, 440, 441, 442, 443, 444, 445, 446, 447, 448, 449, 450, 451, 452, 453, 454, 455, 456, 457, 458, 459, 460, 461, 462, 463, 464, 465, 466, 467, 468, 469, 470, 471, 472, 473, 474, 475, 476, 477, 478, 479, 480, 481, 482, 483, 484, 485, 486, 487, 488, 489, 490, 491, 492, 493, 494, 495, 496, 497, 498, 499, 500, 501, 502, 503, 504, 505, 506, 507, 508, 509, 510, 511, 512, 513, 514, 515, 516, 517, 518, 519, 520, 521, 522, 523, 524, 525, 526, 527, 528, 529, 530, 531, 532, 533, 534, 535, 536, 537, 538, 539, 540, 541, 542, 543, 544, 545, 546, 547, 548, 549, 550, 551, 552, 553, 554, 555, 556, 557, 558, 559, 560, 561, 562, 563, 564, 565, 566, 567, 568, 569, 570, 571, 572, 573, 574, 575, 576, 577, 578, 579, 580, 581, 582, 583, 584, 585, 586, 587, 588, 589, 590, 591, 592, 593, 594, 595, 596, 597, 598, 599, 600, 601, 602, 603, 604, 605, 606, 607, 608, 609, 610, 611, 612, 613, 614, 615, 616, 617, 618, 619, 620, 621, 622, 623, 624, 625, 626, 627, 628, 629, 630, 631, 632, 633, 634, 635, 636, 637, 638, 639, 640, 641, 642, 643, 644, 645, 646, 647, 648, 649, 650, 651, 652, 653, 654, 655, 656, 657, 658, 659, 660, 661, 662, 663, 664, 665, 666, 667, 668, 669, 670, 671, 672, 673, 674, 675, 676, 677, 678, 679, 680, 681, 682, 683, 684, 685, 686, 687, 688, 689, 690, 691, 692, 693, 694, 695, 696, 697, 698, 699, 700, 701, 702, 703, 704, 705, 706, 707, 708, 709, 710, 711, 712, 713, 714, 715, 716, 717, 718, 719, 720, 721, 722, 723, 724, 725, 726, 727, 728, 729, 730, 731, 732, 733, 734, 735, 736, 737, 738, 739, 740, 741, 742, 743, 744, 745, 746, 747, 748, 749, 750, 751, 752, 753, 754, 755, 756, 757, 758, 759, 760, 761, 762, 763, 764, 765, 766, 767, 768, 769, 770, 771, 772, 773, 774, 775, 776, 777, 778, 779, 780, 781, 782, 783, 784, 785, 786, 787, 788, 789, 790, 791, 792, 793, 794, 795, 796, 797, 798, 799, 800, 801, 802, 803, 804, 805, 806, 807, 808, 809, 810, 811, 812, 813, 814, 815, 816, 817, 818, 819, 820, 821, 822, 823, 824, 825, 826, 827, 828, 829, 830, 831, 832, 833, 834, 835, 836, 837, 838, 839, 840, 841, 842, 843, 844, 845, 846, 847, 848, 849, 850, 851, 852, 853, 854, 855, 856, 857, 858, 859, 860, 861, 862, 863, 864, 865, 866, 867, 868, 869, 870, 871, 872, 873, 874, 875, 876, 877, 878, 879, 880, 881, 882, 883, 884, 885, 886, 887, 888, 889, 890, 891, 892, 893, 894, 895, 896, 897, 898, 899, 900, 901, 902, 903, 904, 905, 906, 907, 908, 909, 910, 911, 912, 913, 914, 915, 916, 917, 918, 919, 920, 921, 922, 923, 924, 925, 926, 927, 928, 929, 930, 931, 932, 933, 934, 935, 936, 937, 938, 939, 940, 941, 942, 943, 944, 945, 946, 947, 948, 949, 950, 951, 952, 953, 954, 955, 956, 957, 958, 959, 960, 961, 962, 963, 964, 965, 966, 967, 968, 969, 970, 971, 972, 973, 974, 975, 976, 977, 978, 979, 980, 981, 982, 983, 984, 985, 986, 987, 988, 989, 990, 991, 992, 993, 994, 995, 996, 997, 998, 999, 1000.
8. See DP 548'28 for existing easement dimensions.

**CROSS SECTIONS
SHEET 4 OF 4**

**PRECISION
CONSTRUCTION LTD**

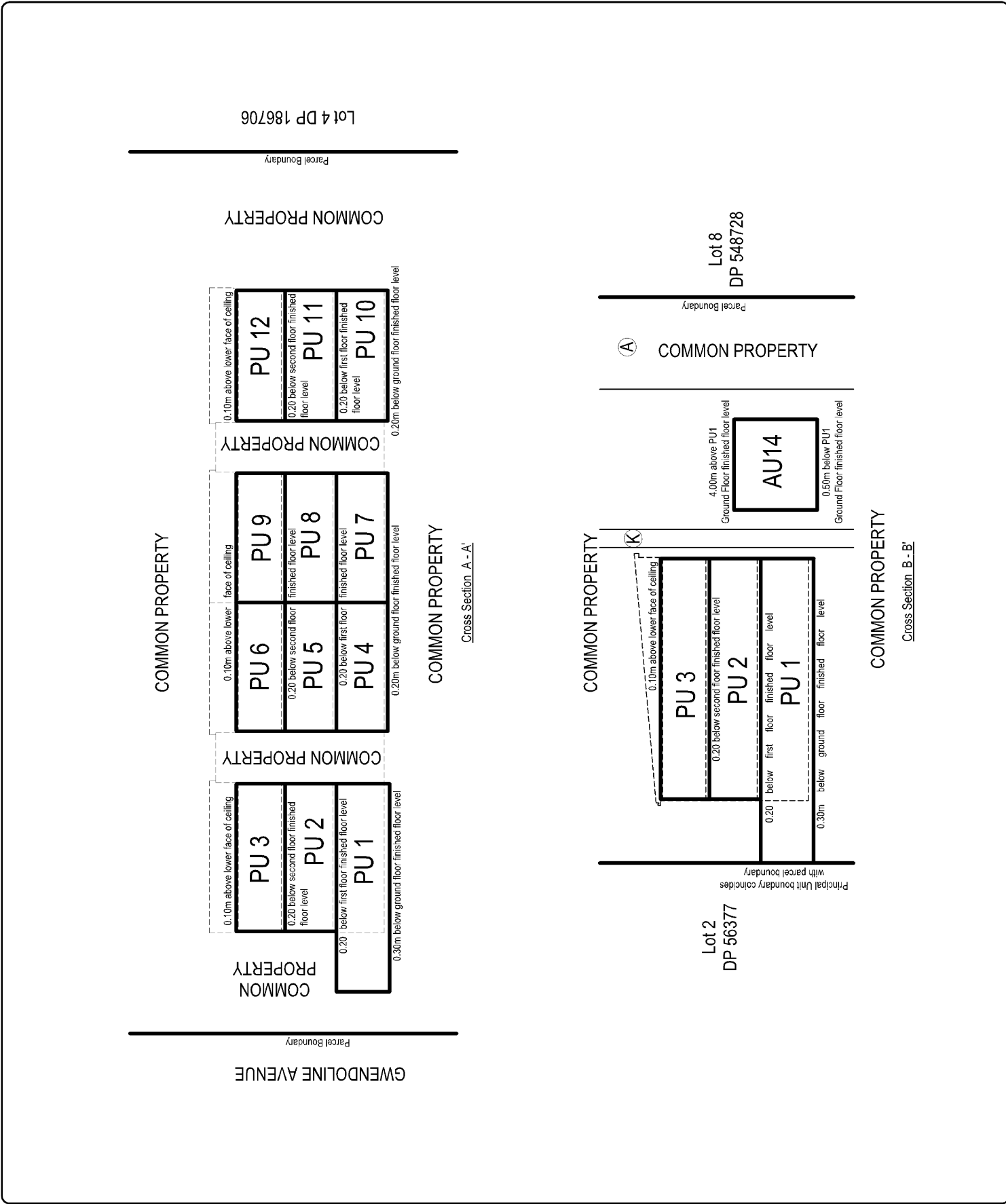
**10 GWENDOLINE AVE
TE ATATU**

**PLAN OF UNITS
ON LOT 7 DP 548728**

Fraser Thomas
ENGINEERS • RESOURCE MANAGERS • SURVEYORS
LEVEL 1, 21 EL KODAK DRIVE, HIGHTBROOK
PO BOX 204006 HIGHTBROOK
TEL +64-9-278 7078
EMAIL: SURVEY@FTL.CO.NZ

SCALE: 1:200
CADD FILE NO.: P:\2\548728\1\Unit 754.dwg - 25/01/21.dwg
DRAWING NO.:
SHEET: 4 OF 4

DP 553238



Lot 4 DP 186706

Lot 8
DP 548728

Lot 2
DP 56377

GWENDOLINE AVENUE

Fraser Thomas
ENGINEERS • RESOURCE MANAGERS • SURVEYORS
LEVEL 1, 21 EL KODAK DRIVE, HIGHTBROOK
PO BOX 204006 HIGHTBROOK
TEL +64-9-278 7078
EMAIL: SURVEY@FTL.CO.NZ

DP 553238

Schedule / Memorandum

Land Registration District

North Auckland

Survey Number

LT 553238

Territorial Authority (the Council)

Auckland Council

Schedule of Existing Appurtenant Easements

Last Edited: 16 Aug 2023 17:18:12

<u>Purpose</u>	<u>Shown</u>	<u>Burdened Land</u> <u>(Servient Tenement)</u>	<u>Creating Document Reference</u>
Right of Way	D DP 548728	Lot 8 DP 548728	EI 12078555.4

Schedule of Existing Easements

Last Edited: 16 Aug 2023 17:19:25

<u>Purpose</u>	<u>Shown</u>	<u>Burdened Land</u> <u>(Servient Tenement)</u>	<u>Creating Document Reference</u>
Right of Way	A DP 548728	Lot 7 DP 548728	EI 12078555.4

Schedule of Existing Easements in Gross

Last Edited: 16 Aug 2023 17:20:10

<u>Purpose</u>	<u>Shown</u>	<u>Burdened Land</u> <u>(Servient Tenement)</u>	<u>Creating Document Reference</u>
Right to convey telecommunications	K DP 548728	Lot 7 DP 548728	EI 12078555.7