

# Record of Survey - DP 543829

---

<b>Survey Number</b>	DP 543829
<b>Surveyor Reference</b>	19244 - Eastbourne St
<b>Surveyor</b>	Alan Martin-Smith
<b>Survey Firm</b>	Cheal Consultants Limited
<b>Surveyor Declaration</b>	I Alan Martin-Smith, being a licensed cadastral surveyor, certify that-- (a) this dataset provided by me and its related survey are accurate, correct and in accordance with the Cadastral Survey Act 2002 and Cadastral Survey Rules 2021; and (b) the survey was undertaken by me or under my personal direction. Declared on 26 Jul 2023 02:24 PM

---

## Survey Details

<b>Dataset Description</b>	LOTS 1 - 4 BEING A SUBDIVISION OF LOT 3 DP 6499 AND LOT 2 DP 304502 AND EASEMENTS OVER PART LOT 152 DEEDS 83, LOT 153 DEEDS 83 & LOT 154 DEEDS 83		
<b>Purpose</b>	LT Subdivision		
<b>Status</b>	Deposited	<b>Type</b>	Survey
<b>Land District</b>	Hawkes Bay	<b>Survey Class</b>	Class A
<b>Meridional Circuit</b>	Hawkes Bay 2000	<b>Vertical Datum</b>	None

---

## Survey Dates

<b>Surveyed Date</b>	18/12/2020	<b>Certified Date</b>	26/07/2023
<b>Submitted Date</b>	26/07/2023 14:24:19	<b>Survey Approval Date</b>	27/07/2023
<b>Deposit Date</b>	18/08/2023		

---

## Referenced Surveys

Survey Number	Land District	Bearing Correction
DP 25567	Hawkes Bay	0°00'00"
SO 4968	Hawkes Bay	0°00'00"
SO 8601	Hawkes Bay	0°00'00"
DP 17765	Hawkes Bay	0°00'00"
DP 23344	Hawkes Bay	0°00'00"
DP 8763	Hawkes Bay	0°00'00"
SO 10715	Hawkes Bay	0°00'00"
SO 8229	Hawkes Bay	0°00'00"
DP 6322	Hawkes Bay	0°00'00"
DP 6499	Hawkes Bay	0°00'00"
SO 4957	Hawkes Bay	0°00'00"
DP 304502	Hawkes Bay	0°00'00"
DP 360093	Hawkes Bay	0°00'00"
DP 473418	Hawkes Bay	0°00'00"
SO 4455	Hawkes Bay	0°00'00"
DP 6070	Hawkes Bay	0°00'00"
DP 6202	Hawkes Bay	0°00'00"



# Record of Survey - DP 543829

---

**Territorial Authorities**

Hastings District

---

**Comprised In**

RT HB52/53

RT 18115

RT HB96/284

RT HB52/54

---

**Created Parcels**

<b>Parcels</b>	<b>Parcel Intent</b>	<b>Area</b>	<b>RT Reference</b>
Area C Deposited Plan 543829	Easement		
Lot 2 Deposited Plan 543829	Fee Simple Title	0.0059 Ha	919586
Lot 3 Deposited Plan 543829	Fee Simple Title	0.0018 Ha	919586
Lot 4 Deposited Plan 543829	Fee Simple Title	0.6127 Ha	919585
Area F Deposited Plan 543829	Easement		
Area B Deposited Plan 543829	Easement		
Area A Deposited Plan 543829	Easement		
Area E Deposited Plan 543829	Easement		
Area G Deposited Plan 543829	Easement		
Area Q Deposited Plan 543829	Easement		
Area R Deposited Plan 543829	Easement		
Area M Deposited Plan 543829	Easement		
Area N Deposited Plan 543829	Easement		
Area O Deposited Plan 543829	Easement		
Area P Deposited Plan 543829	Easement		
Area U Deposited Plan 543829	Easement		
Lot 1 Deposited Plan 543829	Fee Simple Title	0.0018 Ha	919585
<b>Total Area</b>		<u>0.6222 Ha</u>	

# Mark and Vector

Survey Number DP 543829

Meridional Circuit Hawkes Bay 2000

From	To	Code	Bearing	Adpt Surv	Bearing Correction	Distance	Adpt Surv	Class
SS 27 SO 4957	SS 27 SO 10715	ob0	141°01'30"	A SO 8229	0°00'00"	0.02	A SO 8229	
SS 27 SO 10715	BRSP IV SO 8229	ob3	50°31'50"	A SO 8229	0°00'00"	16.96	A SO 8229	
BRSP IV SO 8229	BS III SO 8229	ob10	50°31'50"	A SO 8229	0°00'00"	56.65	A SO 8229	
BS III SO 8229	BS II SO 8229	ob9	50°31'50"	A SO 8229	0°00'00"	50.07	A SO 8229	
BS II SO 8229	AP XV DP 25567	ob16	50°31'50"	A SO 8229	0°00'00"	13.22	A SO 8229	
AP XV DP 25567	SS 27 SO 4957	ob14	230°32'23"	A SO 4957	0°00'00"	136.90	A SO 4957	
BRSP IV SO 8229	AP II DP 23344	ob11	140°55'20"	A DP 23344	0°00'00"	21.25	A DP 23344	
AP II DP 23344	AP V SO 8229	ob18	140°55'20"	A DP 23344	0°00'00"	27.49	A DP 23344	
AP V SO 8229	ALPLUG VII SO 8229	ob20	48°55'20"	A SO 8229	0°00'00"	46.29	A SO 8229	
ALPLUG VII SO 8229	IS VIII SO 8229	ob22	333°14'30"	A SO 8229	0°00'00"	11.78	A SO 8229	
IS VIII SO 8229	BS III SO 8229	ob23	333°14'30"	A SO 8229	0°00'00"	36.85	A SO 8229	
SS 27 SO 10715	IP I DP 360093	ob4	141°30'05"	M		68.10	M	
IP I DP 360093	BP 3 SO 10714	ob24	141°30'05"	A DP 360093	0°00'00"	56.15	A DP 360093	
BP 3 SO 10714	BP 2 SO 10715	ob26	54°13'10"	A SO 10715	0°00'00"	127.75	A SO 10715	
BP 2 SO 10715	BP 1 SO 10715	ob28	320°54'35"	A SO 10715	0°00'00"	139.15	A SO 10715	
BP 1 SO 10715	SS 27 SO 10715	ob27	227°29'40"	A SO 10715	0°00'00"	126.48	A SO 10715	
AP V SO 8229	AP I DP 23344	ob21	140°55'20"	A DP 304502	0°00'00"	26.66	A DP 304502	
AP I DP 23344	NAIL IV DP 23344	ob29	50°05'20"	M		44.62	M	
NAIL IV DP 23344	AL PLUG III DP 23344	ob37	315°51'30"	A DP 23344	0°00'00"	43.14	A DP 23344	
AL PLUG III DP 23344	AP II DP 23344	ob39	245°23'30"	A DP 23344	0°00'00"	42.15	A DP 23344	
BRSP IV SO 8229	PEG (18) SO 2532	ob12	111°00'00"	A SO 8299	0°00'00"	2.29	A SO 8299	
PEG (18) SO 2532	UNMK 15 DP 473418	ob40	141°01'30"	A DP 304502	0°00'00"	15.88	A DP 473418	Class A
UNMK 15 DP 473418	UNMK 16 DP 473418	ob42	141°01'30"	A DP 304502	0°00'00"	3.00	A DP 473418	Class A
UNMK 16 DP 473418	PEG (21) DP 6322	ob41	141°01'30"	A DP 304502	0°00'00"	48.39	A DP 473418	Class A
PEG (21) DP 6322	UNMK (55) DP 23344	ob44	141°01'30"	A DP 23344	0°00'00"	0.60	A DP 23344	Class A
UNMK (55) DP 23344	UNMK (54) DP 23344	ob81	141°01'30"	A DP 23344	0°00'00"	1.00	A DP 23344	Class A
UNMK (54) DP 23344	DISK (22) DP 304502	ob80	141°01'30"	A DP 6322	0°00'00"	4.33	A DP 6322	Class A
DISK (22) DP 304502	AP I DP 23344	ob46	219°24'00"	A DP 304502	0°00'00"	1.03	A DP 304502	

# Mark and Vector

Survey Number DP 543829

Meridional Circuit Hawkes Bay 2000

From	To	Code	Bearing	Adpt Surv	Bearing Correction	Distance	Adpt Surv	Class
DISK (22) DP 304502	DISK 9 DP 543829	ob47	50°42'20"	A DP 304502	0°00'00"	45.28 C		Class A
DISK 9 DP 543829	DISK (23) DP 304502	ob110	50°42'20"	A DP 304502	0°00'00"	1.37 C		Class A
DISK (23) DP 304502	NAIL IV DP 23344	ob48	236°00'00"	A DP 304502	0°00'00"	3.06 A	DP 304502	
AP XV DP 25567	UNMK DP 17765	ob15	224°12'20"	A SO 8229	0°00'00"	18.24 A	SO 8229	
UNMK DP 17765	UNMK (73) DP 304502	ob50	230°32'23"	A DP 17765	0°00'00"	55.89 A	DP 304502	Class A
UNMK DP 17765	PEG (3) DP 23344	ob51	141°00'53"	A DP 23344	0°00'00"	40.21 A	DP 23344	Class A
PEG (3) DP 23344	UNMK (4) DP 23344	ob52	230°36'00"	A DP 23344	0°00'00"	30.53 A	DP 23344	Class A
UNMK (4) DP 23344	UNMK (3) DP 23344	ob53	141°11'00"	A DP 23344	0°00'00"	11.85 A	DP 23344	Class A
UNMK (3) DP 23344	PEG (2) DP 23344	ob90	141°11'00"	A DP 23344	0°00'00"	8.40 A	DP 23344	Class A
PEG (2) DP 23344	UNMK (2) DP 23344	ob54	217°26'20"	A DP 23344	0°00'00"	2.06 A	DP 23344	Class A
UNMK (2) DP 23344	PEG 28 DP 543829	ob92	217°26'20"	A DP 23344	0°00'00"	17.53 C		Class A
PEG 28 DP 543829	UNMK 12 DP 543829	ob56	168°26'09"	A DP 23344	0°00'00"	0.30 C		Class A
UNMK 12 DP 543829	UNMK (57) DP 23344	ob115	168°26'09"	A DP 23344	0°00'00"	0.49 C		Class A
UNMK (57) DP 23344	DISK 67 DP 543829	ob84	168°26'09"	A DP 23344	0°00'00"	0.28 C		Class A
DISK 67 DP 543829	DISK 5 DP 543829	ob96	168°26'09"	A DP 23344	0°00'00"	1.05 C		Class A
DISK 5 DP 543829	DISK 29 DP 543829	ob82	168°26'09"	A DP 23344	0°00'00"	2.73 C		Class A
DISK 29 DP 543829	DISK (23) DP 304502	ob57	168°26'09"	A DP 304502	0°00'00"	4.73 A	DP 304502	Class A
PEG (2) DP 23344	PEG (1) DP 6499	ob55	37°26'20"	A DP 23344	0°00'00"	0.43 A	DP 23344	Class A
PEG (1) DP 6499	BS 52 DP 543829	ob58	140°34'00"	A DP 6499	0°00'00"	1.00 C		Class A
BS 52 DP 543829	UNMK 103 DP 543829	ob94	140°34'00"	A DP 6499	0°00'00"	0.38 C		Class A
UNMK 103 DP 543829	DISK 31 DP 543829	ob142	140°34'00"	A DP 6499	0°00'00"	2.38 C		Class A
DISK 31 DP 543829	UNMK 104 DP 543829	ob59	217°26'20"	A DP 6499	0°00'00"	1.35 C		Class A
UNMK 104 DP 543829	DISK 29 DP 543829	ob144	217°26'20"	A DP 6499	0°00'00"	21.00 C		Class A
SS 27 SO 4957	SS 32 SO 4957	ob1	321°01'30"	A SO 4957	0°00'00"	121.24 A	SO 4957	

# Mark and Vector

Survey Number DP 543829

Meridional Circuit Hawkes Bay 2000

From	To	Code	Bearing	Adpt Surv	Bearing Correction	Distance	Adpt Surv	Class
UNMK 15 DP 473418	UNMK 27 DP 473418	ob43	51°13'00"	A DP 473418	0°00'00"	26.55 A	DP 473418	Class A
UNMK 27 DP 473418	UNMK 26 DP 473418	ob60	142°23'00"	A DP 473418	0°00'00"	0.79 A	DP 473418	Class A
UNMK 26 DP 473418	UNMK 25 DP 473418	ob61	50°33'00"	A DP 473418	0°00'00"	0.43 A	DP 473418	Class A
UNMK 25 DP 473418	UNMK 24 DP 473418	ob62	320°28'00"	A DP 473418	0°00'00"	4.50 A	DP 473418	Class A
UNMK 24 DP 473418	UNMK 23 DP 473418	ob63	50°28'00"	A DP 473418	0°00'00"	2.58 A	DP 473418	Class A
UNMK 23 DP 473418	UNMK 22 DP 473418	ob64	140°28'00"	A DP 473418	0°00'00"	0.45 A	DP 473418	Class A
UNMK 22 DP 473418	UNMK 21 DP 473418	ob65	50°28'00"	A DP 473418	0°00'00"	2.93 A	DP 473418	Class A
UNMK 21 DP 473418	UNMK 20 DP 473418	ob66	140°28'00"	A DP 473418	0°00'00"	4.06 A	DP 473418	Class A
UNMK 20 DP 473418	UNMK 30 DP 473418	ob68	140°28'00"	A DP 473418	0°00'00"	3.00 A	DP 473418	Class A
UNMK 30 DP 473418	UNMK 31 DP 473418	ob70	230°33'00"	A DP 473418	0°00'00"	6.04 A	DP 473418	Class A
UNMK 31 DP 473418	UNMK 32 DP 473418	ob71	322°23'00"	A DP 473418	0°00'00"	0.79 A	DP 473418	Class A
UNMK 32 DP 473418	UNMK 16 DP 473418	ob72	231°13'00"	A DP 473418	0°00'00"	26.48 A	DP 473418	Class A
UNMK 21 DP 473418	UNMK 42 DP 473418	ob67	199°07'00"	A DP 473418	0°00'00"	0.88 A	DP 473418	
UNMK 42 DP 473418	UNMK 43 DP 473418	ob73	230°28'00"	A DP 473418	0°00'00"	2.18 A	DP 473418	Class A
UNMK 43 DP 473418	UNMK 44 DP 473418	ob75	140°28'00"	A DP 473418	0°00'00"	0.61 A	DP 473418	Class A
UNMK 44 DP 473418	UNMK 45 DP 473418	ob76	230°28'00"	A DP 473418	0°00'00"	0.34 A	DP 473418	Class A
UNMK 45 DP 473418	UNMK 41 DP 473418	ob77	140°28'00"	A DP 473418	0°00'00"	2.99 A	DP 473418	Class A
UNMK 41 DP 473418	UNMK 40 DP 473418	ob78	50°33'00"	A DP 473418	0°00'00"	2.52 A	DP 473418	Class A
UNMK 40 DP 473418	UNMK 20 DP 473418	ob79	50°33'00"	A DP 473418	0°00'00"	0.75 A	DP 473418	
UNMK 42 DP 473418	UNMK 40 DP 473418	ob74	140°28'00"	A DP 473418	0°00'00"	3.60 A	DP 473418	Class A
UNMK (57) DP 23344	UNMK (58) DP 23344	ob85	217°26'00"	A DP 23344	0°00'00"	3.42 A	DP 23344	Class A
UNMK (58) DP 23344	UNMK (59) DP 23344	ob86	223°06'00"	A DP 23344	0°00'00"	14.93 A	DP 23344	Class A
UNMK (59) DP 23344	UNMK (55) DP 23344	ob87	231°16'00"	A DP 23344	0°00'00"	32.58 A	DP 23344	Class A
PEG (21) DP 6322	CONCRETE DP 6322	ob45	51°01'45"	A DP 6322	0°00'00"	33.49 A	DP 6322	Class A

# Mark and Vector

Survey Number DP 543829

Meridional Circuit Hawkes Bay 2000

From	To	Code	Bearing	Adpt Surv	Bearing Correction	Distance	Adpt Surv	Class
CONCRETE DP 6322	IS DP 6322	ob88	322°31'00"	A DP 6322	0°00'00"	2.70 A	DP 6322	Class A
IS DP 6322	UNMK 15 DP 543829	ob89	50°15'00"	A DP 6322	0°00'00"	4.80 C		Class A
UNMK 15 DP 543829	PEG 28 DP 543829	ob117	50°15'00"	A DP 6322	0°00'00"	12.70 C		
UNMK (3) DP 23344	UNMK (1) DP 23344	ob91	231°11'00"	A DP 23344	0°00'00"	2.00 A	DP 23344	Class A
UNMK (1) DP 23344	UNMK (2) DP 23344	ob93	141°11'00"	A DP 23344	0°00'00"	8.89 A	DP 23344	Class A
BS 52 DP 543829	UNMK 112 DP 543829	ob95	217°54'00"	C		5.25 C		Class A
UNMK 112 DP 543829	DISK 67 DP 543829	ob153	217°54'00"	C		15.24 C		Class A
SS 27 SO 10715	MA 1 DP 543829	ob5	99°06'40"	M		92.55 M		
MA 1 DP 543829	MA 2 DP 543829	ob98	220°59'30"	M		45.98 M		
MA 2 DP 543829	IP I DP 360093	ob108	258°10'00"	M		19.24 M		
MA 1 DP 543829	AP II DP 23344	ob99	277°51'00"	M		65.50 M		
SS 27 SO 10715	MA 2 DP 543829	ob6	128°52'20"	M		78.64 M		
AP II DP 23344	MA 2 DP 543829	ob19	141°29'30"	M		55.78 M		
IP I DP 360093	BS 5 DP 366241	ob25	141°16'00"	M		73.03 M		
BS 5 DP 366241	AP II DP 23344	ob109	329°29'30"	M		121.34 M		
MA 1 DP 543829	DISK 67 DP 543829	ob100	37°37'00"	M		7.04 M		
MA 1 DP 543829	BS 52 DP 543829	ob101	37°49'30"	M		27.54 M		
SS 27 SO 10715	AP II DP 23344	ob7	102°10'00"	M		27.10 M		
SS 27 SO 10715	SS 32 SO 4957	ob8	321°01'30"	M		121.26 M		
DISK 5 DP 543829	DISK 16 DP 543829	ob83	217°26'00"	C		2.60 C		Class A
DISK 16 DP 543829	DISK 14 DP 543829	ob111	223°06'00"	C		2.33 C		Class A
DISK 14 DP 543829	UNMK 13 DP 543829	ob113	223°06'00"	C		12.72 C		Class A
UNMK 13 DP 543829	UNMK (54) DP 23344	ob112	231°16'00"	C		32.65 C		Class A
DISK 14 DP 543829	DISK 9 DP 543829	ob114	140°43'00"	C		5.70 C		Class A
UNMK 12 DP 543829	UNMK 19 DP 543829	ob116	224°15'00"	C		3.36 C		Class A
UNMK 19 DP 543829	UNMK 76 DP 543829	ob118	230°40'00"	C		6.42 C		Class A
UNMK 22 DP 543829	UNMK 15 DP 543829	ob119	320°22'00"	C		0.58 C		Class A
MA 1 DP 543829	DISK 5 DP 543829	ob102	44°46'00"	M		6.41 M		

# Mark and Vector

Survey Number DP 543829

Meridional Circuit Hawkes Bay 2000

From	To	Code	Bearing	Adpt Surv	Bearing Correction	Distance	Adpt Surv	Class
MA 1 DP 543829	DISK 16 DP 543829	ob103	49°44'00"	M		3.84 M		
MA 1 DP 543829	DISK 14 DP 543829	ob104	59°31'00"	M		1.55 M		
MA 1 DP 543829	DISK 9 DP 543829	ob105	126°16'00"	M		6.13 M		
MA 1 DP 543829	AP I DP 23344	ob106	222°54'00"	M		45.18 M		
MA 1 DP 543829	NAIL IV DP 23344	ob107	142°10'00"	M		5.65 M		
DISK (23) DP 304502	UNMK (3) DP 6499	ob49	168°26'09"	A DP 304502	0°00'00"	2.42 A DP 304502		
UNMK (3) DP 6499	UNMK (1) DP 6499	ob120	50°33'00"	A DP 6499	0°00'00"	4.83 A DP 6499		
UNMK (1) DP 6499	PEG (1) DEEDS 83	ob121	140°53'47"	A DP 6499	0°00'00"	5.16 C		
PEG (1) DEEDS 83	UNMK (2) DP 6499	ob122	140°53'47"	A DP 6499	0°00'00"	7.46 C		
UNMK (2) DP 6499	IT DP 8763	ob124	140°58'10"	A DP 8763	0°00'00"	12.66 A DP 8763		
IT DP 8763	PEG (1) DP 8763	ob125	140°58'10"	A DP 8763	0°00'00"	19.94 A DP 8763		
PEG (1) DP 8763	UNMK 93 DP 543829	ob127	50°32'21"	A DP 8763	0°00'00"	22.83 C		
UNMK 93 DP 543829	UNMK 94 DP 543829	ob128	50°32'21"	A DP 8763	0°00'00"	3.00 C		Class A
UNMK 94 DP 543829	PEG (4) DEEDS 83	ob129	50°32'21"	A DP 8763	0°00'00"	24.46 C		
PEG (4) DEEDS 83	PEG (2) DEEDS 83	ob130	321°00'53"	C		20.12 C		
PEG (2) DEEDS 83	PEG (3) DEEDS 83	ob131	321°00'53"	C		20.12 C		
PEG (3) DEEDS 83	PEG (1) DP 23344	ob132	321°00'53"	C		20.12 C		
PEG (1) DP 23344	PEG (1) DP 6499	ob133	230°33'33"	A DP 23344	0°00'00"	30.18 A DP 23344		
PEG (1) DEEDS 83	UNMK 99 DP 543829	ob123	50°20'00"	C		25.94 C		
UNMK 99 DP 543829	UNMK 100 DP 543829	ob134	50°20'00"	C		3.00 C		Class A
UNMK 100 DP 543829	PEG (3) DEEDS 83	ob136	50°20'00"	C		21.35 C		
IT DP 8763	UNMK 101 DP 543829	ob126	50°19'40"	C		23.61 C		
UNMK 101 DP 543829	UNMK 102 DP 543829	ob138	50°19'40"	C		3.00 C		Class A
UNMK 102 DP 543829	PEG (2) DEEDS 83	ob140	50°19'40"	C		23.68 C		
UNMK 103 DP 543829	UNMK 105 DP 543829	ob143	77°16'30"	C		10.42 C		Class A

# Mark and Vector

Survey Number DP 543829

Meridional Circuit Hawkes Bay 2000

From	To	Code	Bearing	Adpt Surv	Bearing Correction	Distance	Adpt Surv	Class
UNMK 105 DP 543829	UNMK 100 DP 543829	ob147	143°13'00"	C		14.15 C		Class A
UNMK 104 DP 543829	UNMK 106 DP 543829	ob145	77°16'00"	C		8.44 C		Class A
UNMK 106 DP 543829	UNMK 99 DP 543829	ob148	143°13'00"	C		12.37 C		Class A
UNMK 100 DP 543829	UNMK 107 DP 543829	ob137	143°13'00"	C		14.06 C		Class A
UNMK 107 DP 543829	UNMK 108 DP 543829	ob149	170°58'00"	C		3.31 C		Class A
UNMK 108 DP 543829	UNMK 102 DP 543829	ob150	143°13'00"	C		3.23 C		Class A
UNMK 99 DP 543829	UNMK 109 DP 543829	ob135	143°13'00"	C		13.17 C		Class A
UNMK 109 DP 543829	UNMK 110 DP 543829	ob151	170°58'00"	C		3.31 C		Class A
UNMK 110 DP 543829	UNMK 101 DP 543829	ob152	143°13'00"	C		4.12 C		Class A
UNMK 102 DP 543829	UNMK 94 DP 543829	ob141	143°13'00"	C		20.05 C		Class A
UNMK 101 DP 543829	UNMK 93 DP 543829	ob139	143°13'00"	C		20.04 C		Class A
UNMK 104 DP 543829	UNMK 112 DP 543829	ob146	257°15'00"	C		4.26 C		Class A
UNMK (78) DP 304502	PEG (18) SO 2532	ob159	230°32'23"	A DP 17765	0°00'00"	36.00 C		Class A
UNMK (73) DP 304502	UNMK (77) DP 304502	ob154	230°32'23"	A DP 17765	0°00'00"	3.00 A DP 304502		Class A
UNMK (77) DP 304502	UNMK (34) DP 304502	ob156	230°32'23"	A DP 17765	0°00'00"	2.80 A DP 304502		Class A
UNMK (34) DP 304502	UNMK (78) DP 304502	ob157	230°32'23"	A DP 17765	0°00'00"	3.00 A DP 304502		Class A
UNMK (78) DP 304502	UNMK 79 DP 543829	ob160	143°06'00"	C		16.98 C		Class A
UNMK 79 DP 543829	UNMK 20 DP 473418	ob161	230°03'00"	C		2.91 C		Class A
UNMK 30 DP 473418	UNMK 81 DP 543829	ob69	52°17'00"	C		3.37 C		Class A
UNMK 81 DP 543829	UNMK 82 DP 543829	ob162	146°38'00"	C		20.85 C		Class A
UNMK 82 DP 543829	UNMK 83 DP 543829	ob163	12°47'00"	C		5.60 C		Class A
UNMK 83 DP 543829	UNMK 15 DP 543829	ob164	140°44'00"	C		27.53 C		Class A
UNMK (34) DP 304502	UNMK 86 DP 543829	ob158	143°06'00"	C		17.00 C		Class A
UNMK 86 DP 543829	UNMK 87 DP 543829	ob165	50°03'00"	C		0.80 C		Class A



# Mark and Vector

Survey Number DP 543829

Meridional Circuit Hawkes Bay 2000

From	To	Code	Bearing	Adpt Surv	Bearing Correction	Distance	Adpt Surv	Class
UNMK 87 DP 543829	UNMK 88 DP 543829	ob166	146°38'00"	C		17.26 C		Class A
UNMK 88 DP 543829	UNMK 90 DP 543829	ob167	12°47'00"	C		6.20 C		Class A
UNMK 90 DP 543829	UNMK (77) DP 304502	ob168	319°56'00"	C		30.34 C		Class A
UNMK 76 DP 543829	UNMK 22 DP 543829	ob169	230°40'00"	C		2.80 C		Class A
UNMK (73) DP 304502	UNMK 111 DP 543829	ob155	139°56'00"	C		31.80 C		Class A
UNMK 111 DP 543829	UNMK (113) DP 304502	ob170	192°47'00"	C		5.59 C		Class A
AP II DP 23344	IP I DP 360093	ob17	161°31'50"	M		50.17 M		
MA 1 DP 543829	DISK (23) DP 304502	ob97	114°35'00"	M		6.61 M		
NAIL IV DP 23344	AP II DP 23344	ob30	281°06'00"	M		69.65 M		
NAIL IV DP 23344	DISK 9 DP 543829	ob31	60°33'00"	M		1.70 M		
NAIL IV DP 23344	DISK 14 DP 543829	ob32	337°55'00"	M		5.68 M		
NAIL IV DP 23344	DISK 16 DP 543829	ob33	355°33'00"	M		6.98 M		
NAIL IV DP 23344	DISK 29 DP 543829	ob34	14°02'00"	M		6.53 M		
NAIL IV DP 23344	MA 20 DP 543829	ob35	230°00'00"	M		60.20 M		
MA 20 DP 543829	MA 30 DP 543829	ob178	46°35'00"	M		54.78 M		
MA 30 DP 543829	MA 40 DP 543829	ob171	39°00'00"	M		40.12 M		
NAIL IV DP 23344	MA 30 DP 543829	ob36	260°35'00"	M		6.41 M		
MA 20 DP 543829	AP I DP 23344	ob179	49°44'00"	M		15.59 M		
MA 20 DP 543829	MA 2 DP 543829	ob180	55°54'00"	M		15.09 M		
MA 20 DP 543829	AP II DP 23344	ob181	336°54'00"	M		56.65 M		
MA 20 DP 543829	MA 40 DP 543829	ob182	43°22'20"	M		94.70 M		
MA 30 DP 543829	AP I DP 23344	ob172	225°20'00"	M		39.23 M		
MA 30 DP 543829	AP II DP 23344	ob173	283°08'00"	M		63.68 M		
MA 30 DP 543829	PEG 28 DP 543829	ob174	29°49'00"	M		13.99 M		

# Mark and Vector

Survey Number DP 543829

Meridional Circuit Hawkes Bay 2000

From	To	Code	Bearing	Adpt Surv	Bearing Correction	Distance	Adpt Surv	Class
MA 40 DP 543829	AP I DP 23344	ob175	222°07'30"	M		79.22 M		
MA 40 DP 543829	PEG 28 DP 543829	ob176	223°51'00"	M		26.40 M		
MA 40 DP 543829	DISK 31 DP 543829	ob177	211°42'00"	M		7.10 M		
AP XV DP 25567	SS 38 SO 4966	ob13	243°34'30"	A SO 4957	0°00'00"	13.39 A SO 4957		
SS 38 SO 4966	IP V DP 6070	ob183	141°00'53"	A DP 25567	0°00'00"	25.17 A DP 6070		
IP V DP 6070	SS 39 SO 4966	ob184	141°00'53"	A DP 25567	0°00'00"	115.63 A DP 6202		
SS 39 SO 4966	BS XIV DP 25567	ob185	63°35'15"	A SO 4957	0°00'00"	13.39 A SO 4957		
BS XIV DP 25567	NAIL I SO 4455	ob187	321°00'53"	A SO 4455	0°00'00"	84.01 A SO 4455		
NAIL I SO 4455	BS I SO 8229	ob188	321°00'53"	A SO 8229	0°00'00"	15.12 A SO 8229		
BS I SO 8229	AP XV DP 25567	ob190	321°00'53"	A DP 23344	0°00'00"	41.66 A DP 23344		
NAIL I SO 4455	PEG (1) DP 23344	ob189	213°30'40"	A SO 4455	0°00'00"	18.98 A SO 4455		
SS 39 SO 4966	PEG (4) DEEDS 83	ob186	302°33'00"	A SO 4968	0°00'00"	15.87 A SO 4968		
SS 27 SO 10715	IS IV DP 6322	ob2	141°01'30"	A SO 8601	0°00'00"	38.10 A SO 8601		
IS IV DP 6322	IS I DP 6322	ob191	141°01'30"	A DP 6322	0°00'00"	34.19 A DP 6322		
16 SO 4957	NAIL I DP 8763	ob204	50°32'21"	A DP 8763	0°00'00"	35.15 A DP 8763		
NAIL I DP 8763	NAIL II DP 8763	ob194	50°32'21"	A DP 8763	0°00'00"	11.09 A DP 8763		
NAIL II DP 8763	NAIL IV DP 8763	ob196	50°32'21"	A DP 8763	0°00'00"	22.36 A DP 8763		
NAIL IV DP 8763	BS XIV DP 25567	ob197	50°32'21"	A DP 8763	0°00'00"	68.32 A DP 8763		
NAIL IV DP 8763	PEG (1) DP 8763	ob198	320°48'45"	A DP 8763	0°00'00"	18.11 A DP 8763		
NAIL I DP 8763	IT III DP 8763	ob195	347°10'45"	A DP 8763	0°00'00"	52.44 A DP 8763		
IT III DP 8763	NAIL II DP 8763	ob199	155°22'35"	A DP 8763	0°00'00"	48.49 A DP 8763		
IT III DP 8763	UNMK (2) DP 6499	ob200	30°06'40"	A DP 8763	0°00'00"	10.97 A DP 8763		
UNMK (113) DP 304502	UNMK 76 DP 543829	ob202	140°44'00"	A DP 304502	0°00'00"	30.29 A DP 304502		Class A
IS I DP 6322	IS I DP 6499	ob192	141°01'30"	A DP 6499	0°00'00"	22.18 A DP 6499		
IS I DP 6499	16 SO 4957	ob203	141°01'30"	A DP 6499	0°00'00"	46.30 A DP 6499		
IT III DP 8763	IT DP 8763	ob201	91°28'20"	A DP 8763	0°00'00"	13.48 A DP 8763		
IS I DP 6322	IS (5) DP 6322	ob193	51°24'40"	A DP 6322	0°00'00"	18.11 A DP 6322		
IS (5) DP 6322	IS (4) DP 6322	ob205	51°24'40"	A DP 6322	0°00'00"	31.20 A DP 6322		
IS (4) DP 6322	IS (3) DP 6322	ob206	51°24'40"	A DP 6322	0°00'00"	4.26 A DP 6322		
IS (3) DP 6322	IP II DP 6322	ob207	51°24'40"	A DP 6322	0°00'00"	14.23 A DP 6322		
IP II DP 6322	IS II DP 6322	ob209	148°29'00"	A DP 6499	0°00'00"	19.43 A DP 6499		
IS II DP 6322	IS I DP 6499	ob212	228°52'20"	A DP 6499	0°00'00"	65.33 A DP 6499		

# Mark and Vector

Survey Number DP 543829

Meridional Circuit Hawkes Bay 2000

From	To	Code	Bearing	Adpt Surv	Bearing Correction	Distance	Adpt Surv	Class
IS II DP 6322	UNMK (2) DP 6499	ob213	13°01'00"	A DP 6499	0°00'00"	4.10 A	DP 6499	
IP II DP 6322	UNMK (3) DP 6499	ob210	185°58'00"	A DP 6499	0°00'00"	5.89 A	DP 6499	
IS (3) DP 6322	UNMK (3) DP 6499	ob208	73°57'00"	A DP 6499	0°00'00"	10.94 A	DP 6499	
NAIL IV DP 23344	IP II DP 6322	ob38	34°58'00"	A DP 23344	0°00'00"	6.34 A	DP 23344	
IP II DP 6322	UNMK (1) DP 6499	ob211	131°43'20"	A DP 6499	0°00'00"	4.18 A	DP 6499	

Mark Name	Mark Condition	Description
AP II DP 23344		Flush in footpath.
BS 5 DP 366241		Flush in kerb channel.
IP I DP 360093		Flush in footpath.
MA 1 DP 543829		Flush in seal.
MA 2 DP 543829		Flush in footpath.
SS 27 SO 10715		In footpath under steel lid.
SS 32 SO 4957		In footpath under steel lid.

\*\*\* End of Report \*\*\*

**MEMORANDUM OF EASEMENTS – DP 543829**

<b>LOCAL AUTHORITY</b>	Hastings District Council
<b>CONSENT REFERENCE</b>	RMA20190497
<b>PLAN NUMBER</b>	DP 543829
<b>JOB REFERENCE</b>	19244
<b>DATASET DESCRIPTION</b>	LOTS 1 - 4 BEING A SUBDIVISION OF LOT 3 DP 6499 AND LOT 2 DP 304502 AND EASEMENT OVER PART LOT 152 DEEDS 83, LOT 153 DEEDS 83 & LOT 154 DEEDS 83

**Schedule of Existing Easements**

<b>Purpose</b>	<b>Shown</b>	<b>Servient Tenement (Burdened Land)</b>	<b>Document</b>
Right Of Way	A, E	Lot 4 Hereon	T. 64525
	B	Lot 3 Hereon	
Rights to Drain Sewage, Right to Drain Water and Right to Convey Water	F	Lot 4 Hereon	E.C. 595303.3
Right to Drain Water	E		
Right Of Way; Rights to Convey Electricity, Gas, Telecommunications and Water; Right to Drain Sewage and Stormwater	A, E	Lot 4 Hereon	E.C. 5156817.2
	B	Lot 3 Hereon	
Right Of Way	M	Lot 1 Hereon	T. 65787
Right Of Way	N	Lot 2 Hereon	T. 65787

**Schedule of Existing Easements in Gross**

<b>Purpose</b>	<b>Shown</b>	<b>Servient Tenement (Burdened Land)</b>	<b>Document</b>	<b>Grantee</b>
Right to Convey Electricity, Telecommunications and Electronic Data	U	Lot 4 Hereon	E.I. 10519065.1	Unison Networks Limited

cheal

Schedule of Easements In Gross			
Purpose	Shown	Servient Tenement (Burdened Land)	Grantee
Right to Convey Electricity and Right to Convey Telecommunications	A, E, G, C	Lot 4 Hereon	Unison Networks Limited

Memorandum of Easements			
Purpose	Shown	Servient Tenement (Burdened Land)	Dominant Tenement (Benefited Land)
Right Of Way; Right to Convey Electricity, Gas, Telecommunications and Water; Right to Drain Sewage and Water	A, E, G	Lot 4 Hereon	Lots 2 & 3 Hereon Part Lot 152 Deeds 83 (RT HB96/284 – Int) Lot 153 Deeds 83 (RT HB52/53 – Int) Lot 154 Deeds 83 (RT HB52/54 – Int) & Lot 1 DP 304502 (RT 18114)
	B	Lot 3 Hereon	Lots 1 & 4 Hereon
	M	Lot 1 Hereon	Lots 2 & 3 Hereon Part Lot 152 Deeds 83 (RT HB96/284 – Int) Lot 153 Deeds 83 (RT HB52/53 – Int) Lot 154 Deeds 83 (RT HB52/54 – Int)
Right Of Way; Right to Drain Sewage; Right to Drain Water Right to Convey Water	N	Lot 2 Hereon	Lot 1 Hereon
Right to Drain Sewage	O	Lot 2 Hereon	Lots 1 & 4 Hereon
	P	Part Lot 152 Deeds 83	
	Q	Lot 153 Deeds 83	
	R	Lot 154 Deeds 83	

Notes:  
Easement G on DP 304502 is to be surrendered (affects T. 64525 and EC 5156817.2) under Section 243(e) RMA 1991 and the existing rights will be recreated as part of G Hereon.

## Amalgamation Condition/Amalgamation Covenant

Amalgamation Condition (Section 220(1) (b)(ii) RMA):

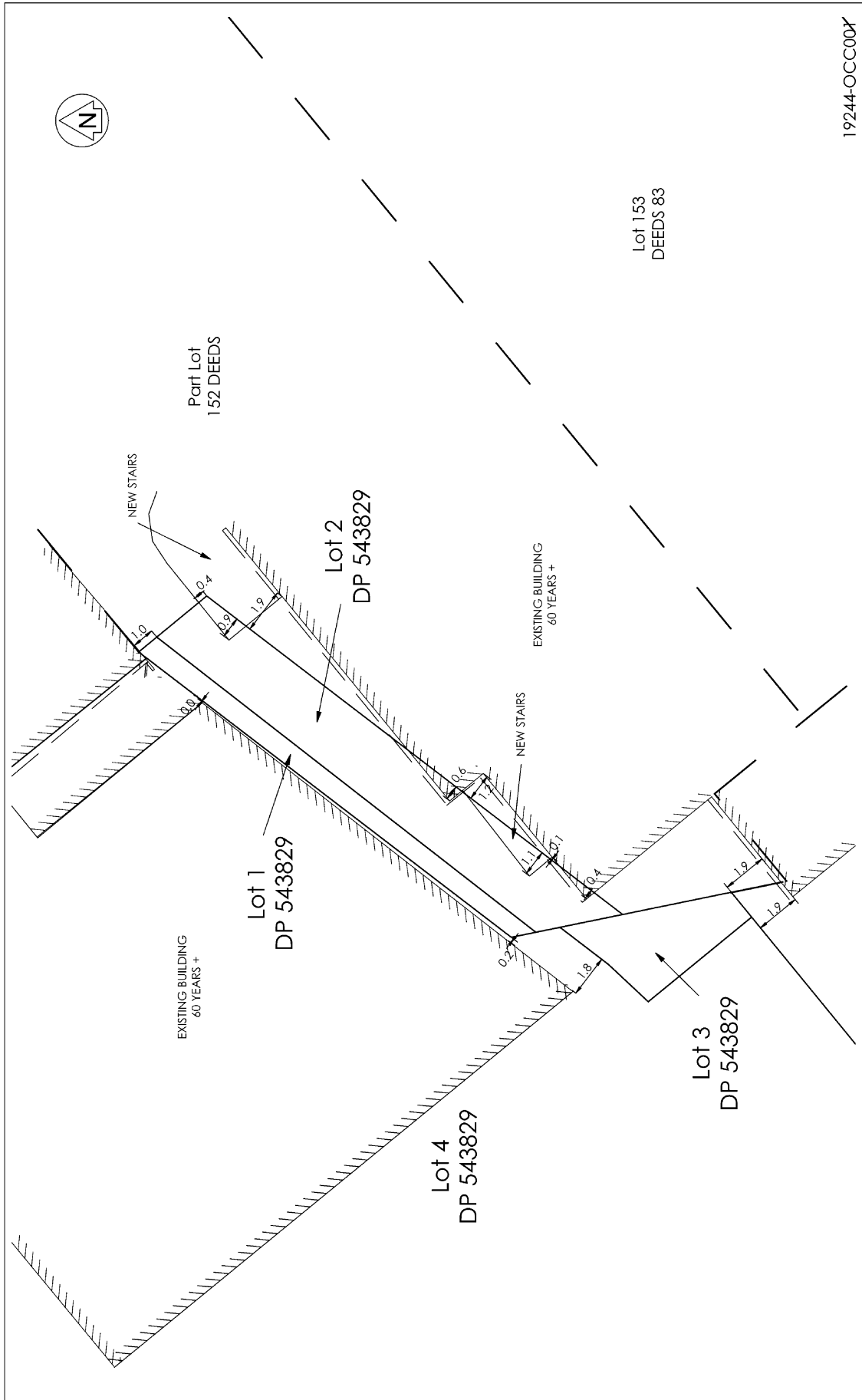
That Lot 1 Hereon be Transferred to the Owner of Lot 4 Hereon and one Record Of Title be Issued to Include both Parcels.

LINZ Ref #: 1636116

Amalgamation Condition (Section 220(2)(a) RMA):

That Lots 2 & 3 Hereon be held together with Part Lot 152 Deed 83 and Part Lot 158 Deed 83 (RT HB96/284 - Interim) by an amalgamation covenant pursuant to Section 220(2)(a) of the Resource Management Act.

# Occupation Diagram



19244-OCC000\*

Territorial Authority	Napier City Council	Scale	1:150
Local District	Hawkes Bay	Plan Reference	A3
		Plan Reference	DP 543829

## Occupation Diagram 301 Eastbourne Street

Drawn	M. Giff	31/03/20	M/S
Checked	A. M. Smith	31/03/20	M/S
Approved	A. M. Smith	31/03/20	M/S

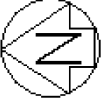


www.cheal.co.nz



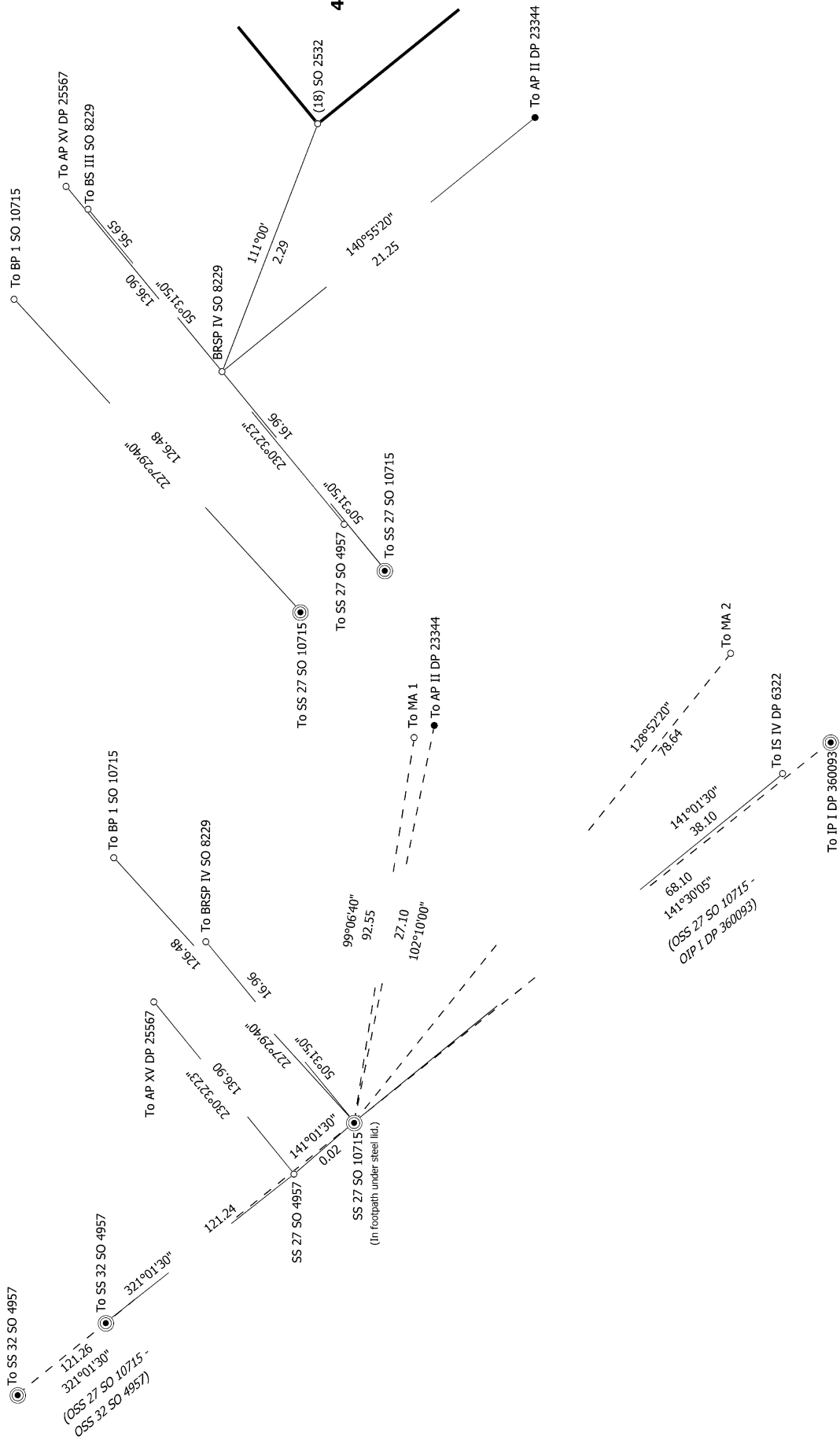






Diag. AA

Diag. AB



S 3/11

Land District: Hawkes Bay

Digitally Generated Plan

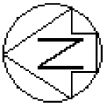
Generated on: 13/10/2023 11:57:am Page 18 of 31

LOTS 1 - 4 BEING A SUBDIVISION OF LOT 3 DP 6499 AND LOT 2 DP 304502 AND EASEMENTS OVER PART LOT 152 DEEDS 83, LOT 153 DEEDS 83 & LOT 154 DFFDS 83

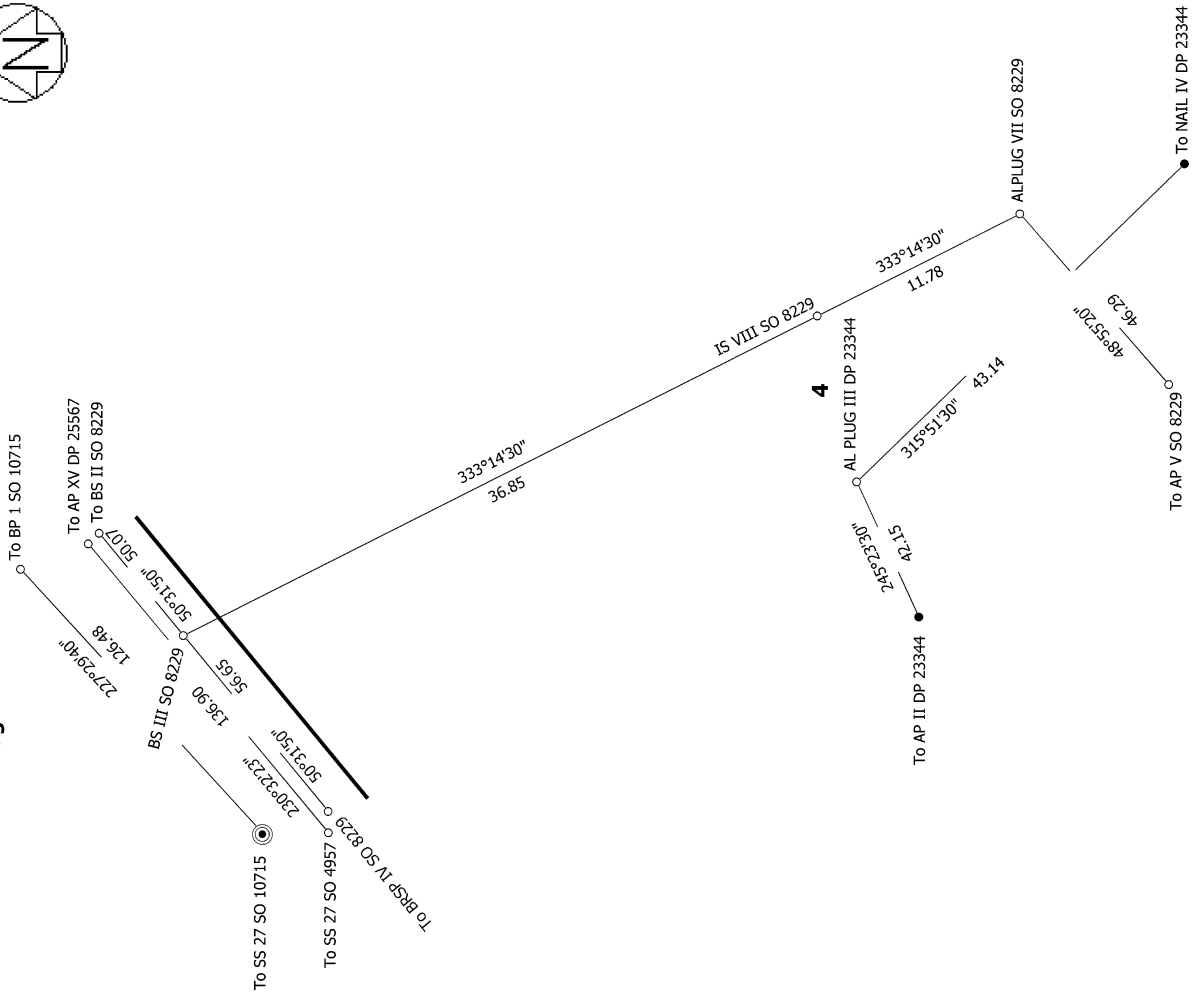
Surveyor: Alan Martin-Smith  
Firm: Cheal Consultants Limited  
Date of Survey: 18/12/2020

Record of Survey  
DP 543829

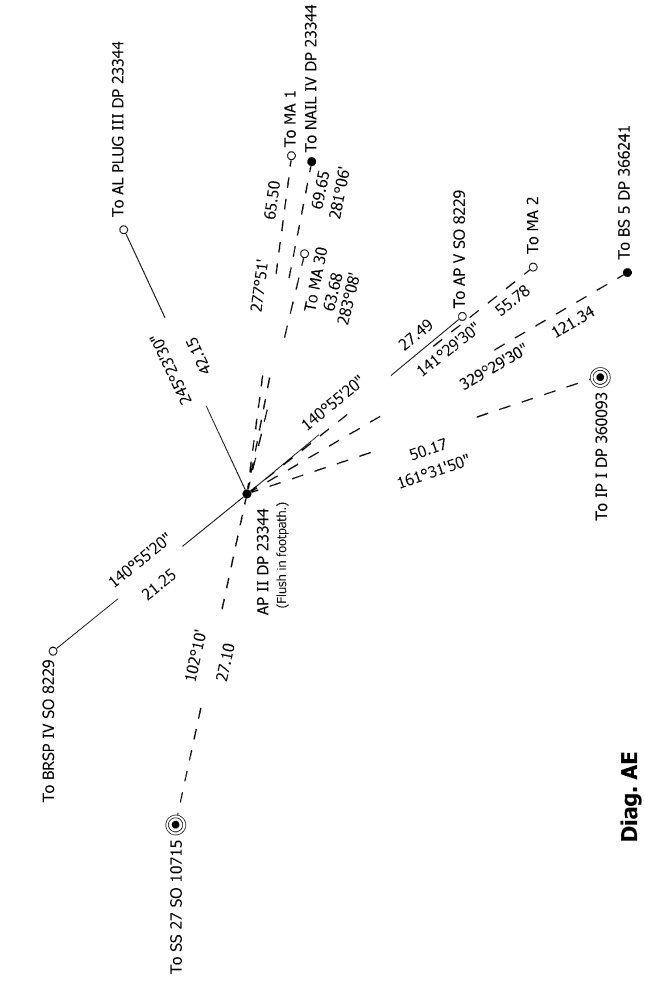
Deposited on: 18/08/2023



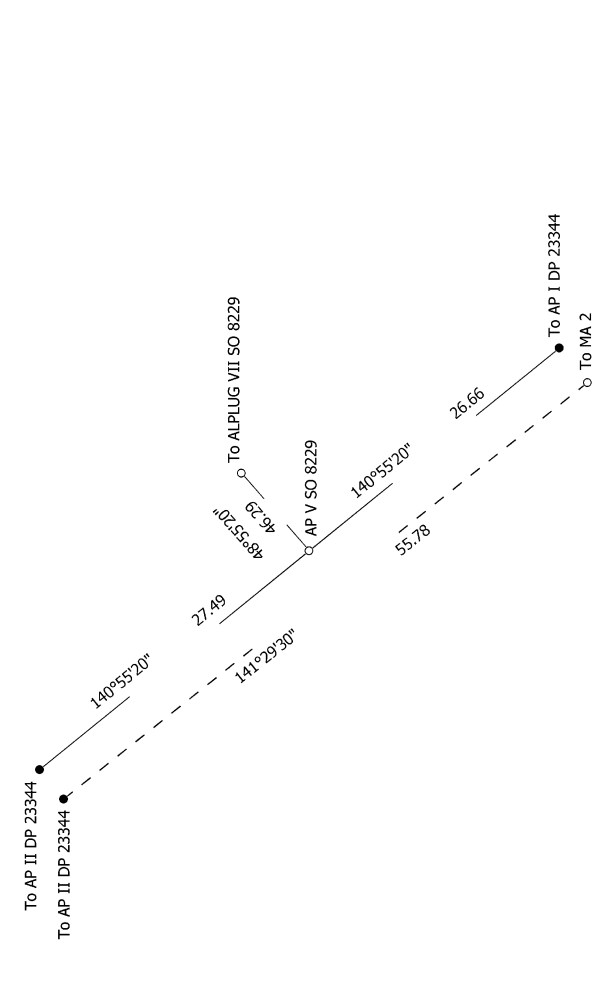
Diag. B



Diag. AC



Diag. AE



S 4/11

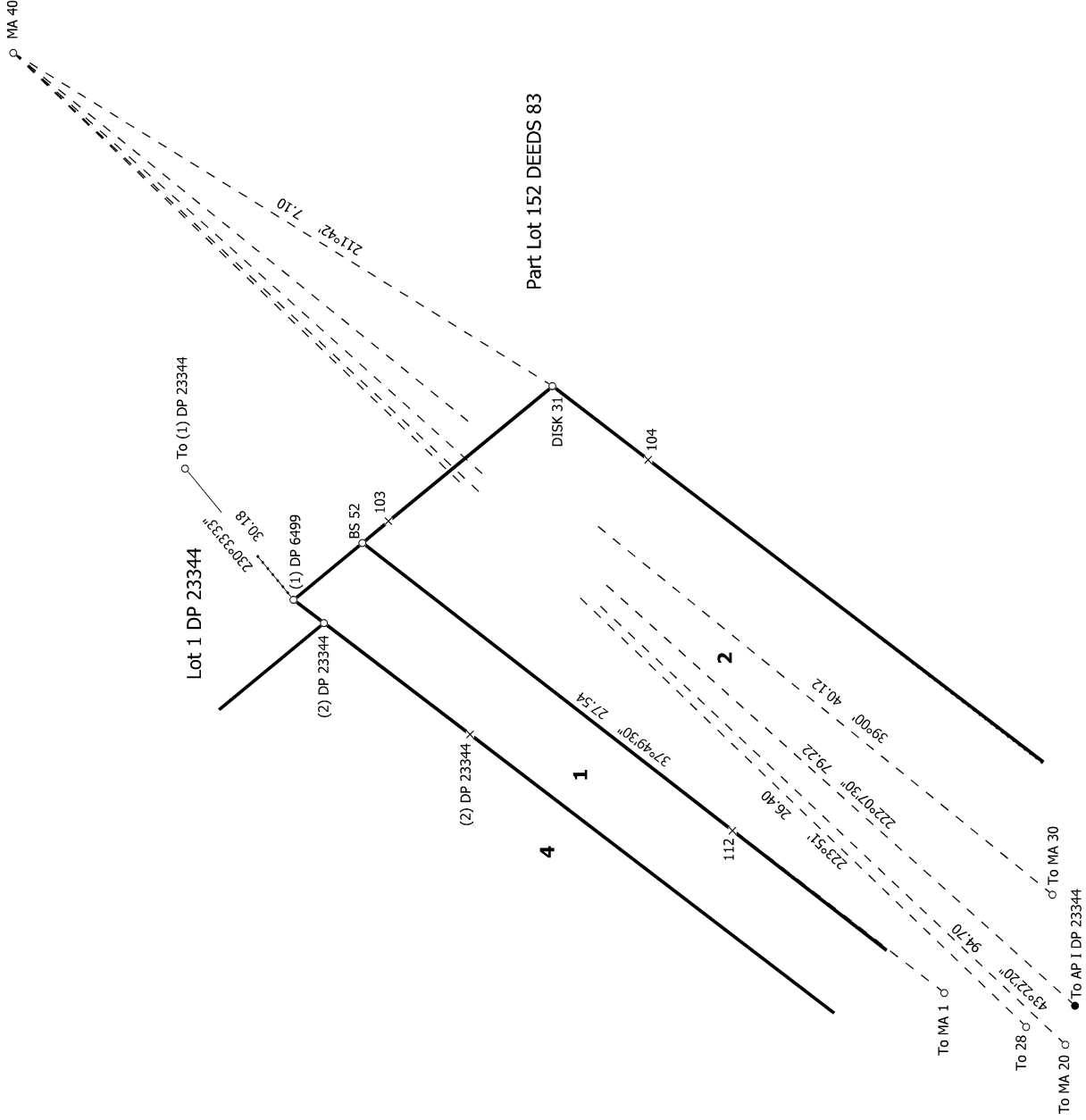
<p>Land District: Hawkes Bay</p> <p><b>Digitally Generated Plan</b></p> <p>Generated on: 13/10/2023 11:57:am   Page 19 of 31</p>	<p><b>LOTS 1 - 4 BEING A SUBDIVISION OF LOT 3 DP 6499 AND LOT 2 DP 304502 AND EASEMENTS OVER PART LOT 152 DEEDS 83, LOT 153 DEEDS 83 &amp; LOT 154 DFFDS 83</b></p>	<p>Surveyor: Alan Martin-Smith          Firm: Cheal Consultants Limited          Date of Survey: 18/12/2020</p>	<p>Record of Survey  <b>DP 543829</b>          Deposited on: 18/08/2023</p>
--	---	---	---







Diag. EA



S 8/11

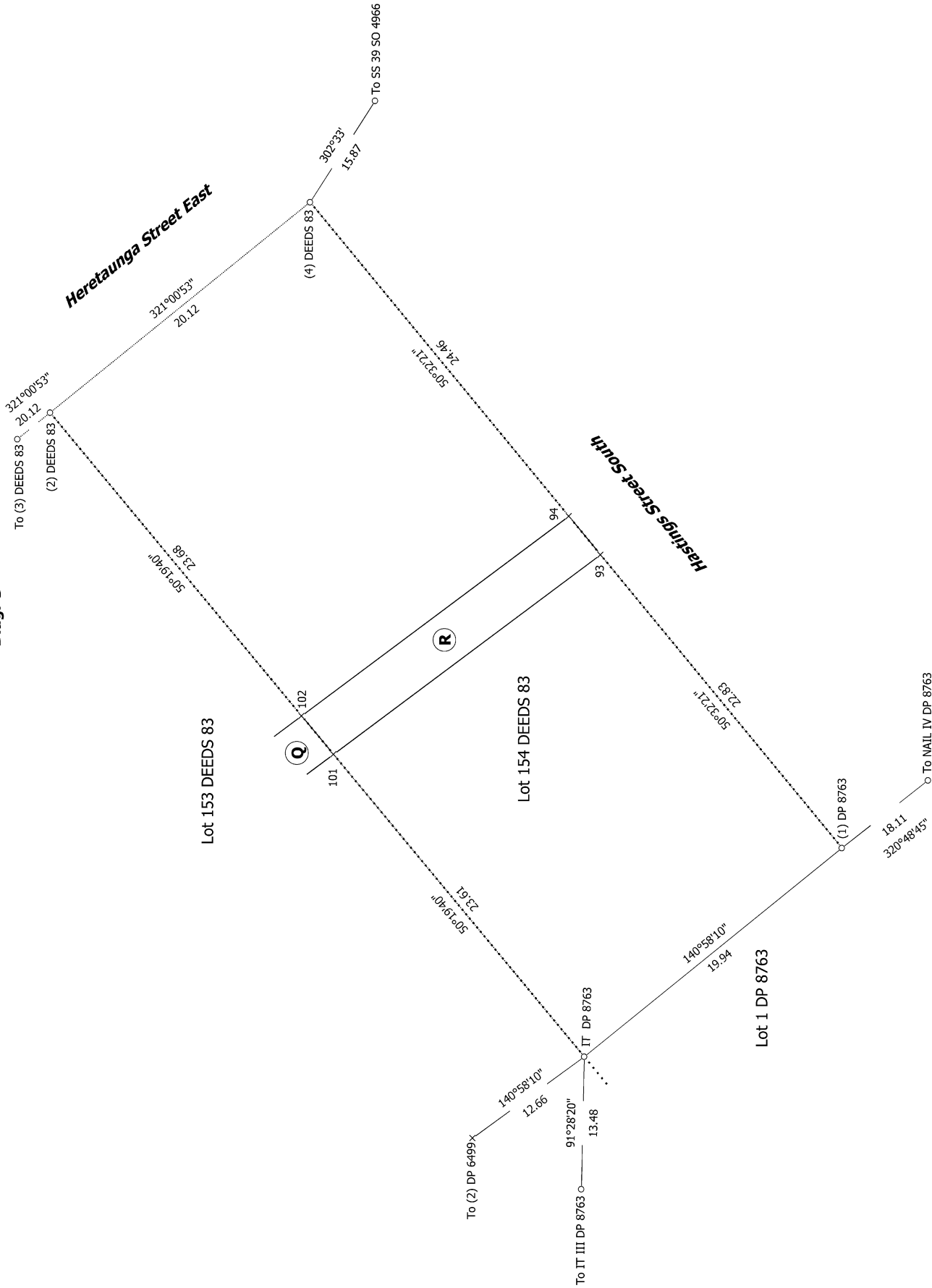
Record of Survey  
 DP 543829  
 Deposited on: 18/08/2023

Surveyor: Alan Martin-Smith  
 Firm: Cheal Consultants Limited  
 Date of Survey: 18/12/2020

LOTS 1 - 4 BEING A SUBDIVISION OF LOT 3 DP 6499 AND LOT 2 DP 304502  
 AND EASEMENTS OVER PART LOT 152 DEEDS 83, LOT 153 DEEDS 83 &  
 LOT 154 DFFDS 83



Diag. G



S 9/11

Record of Survey  
 DP 543829  
 Deposited on: 18/08/2023

Surveyor: Alan Martin-Smith  
 Firm: Cheal Consultants Limited  
 Date of Survey: 18/12/2020

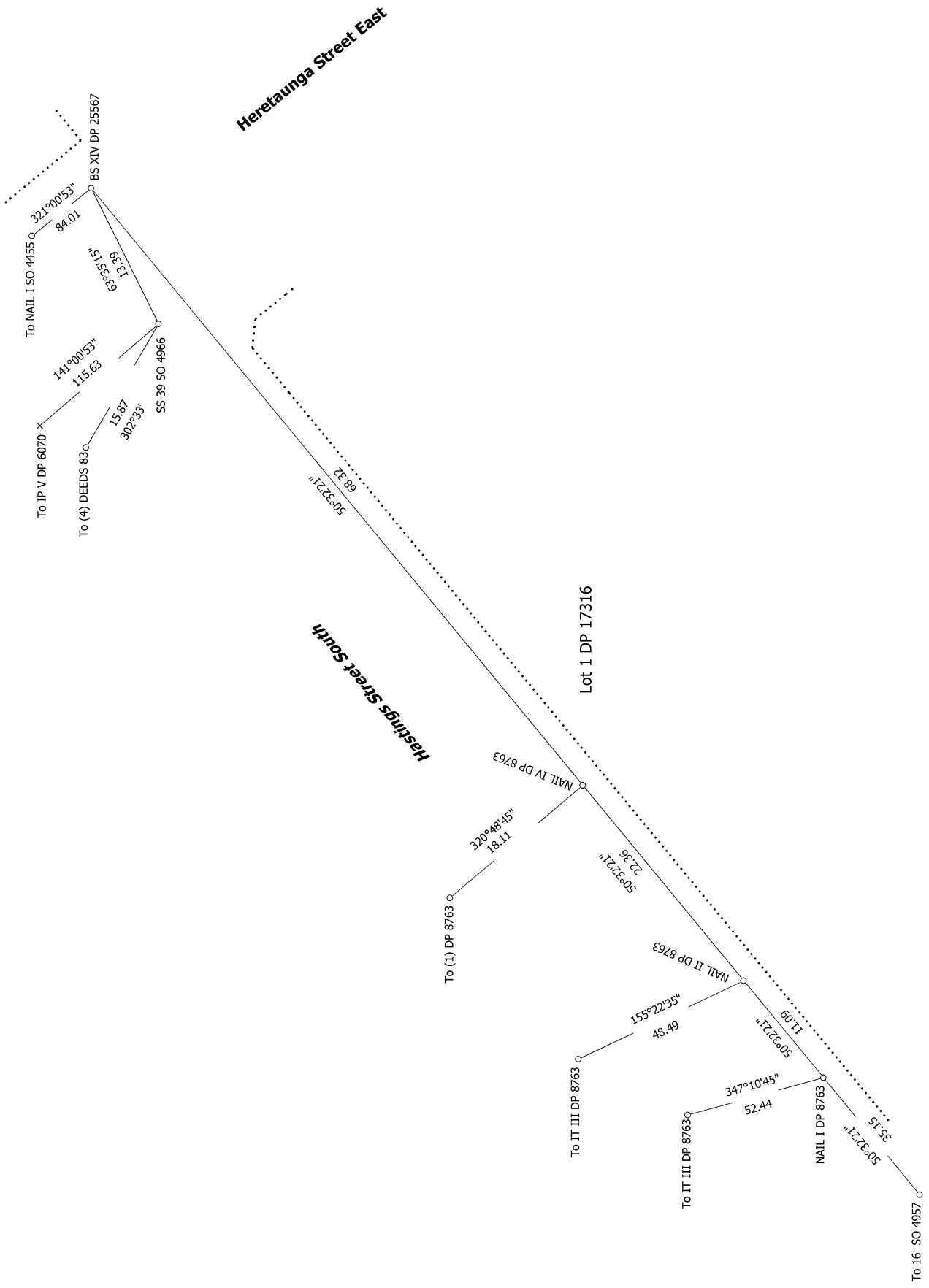
LOTS 1 - 4 BEING A SUBDIVISION OF LOT 3 DP 6499 AND LOT 2 DP 304502  
 AND EASEMENTS OVER PART LOT 152 DEEDS 83, LOT 153 DEEDS 83 &  
 LOT 154 DFFDS 83

Land District: Hawkes Bay  
 Digitally Generated Plan  
 Generated on: 13/10/2023 11:57am | Page 24 of 31





Diag. F



S 11/11

Land District: Hawkes Bay

Digitally Generated Plan

Generated on: 13/10/2023 11:57am | Page 26 of 31

LOTS 1 - 4 BEING A SUBDIVISION OF LOT 3 DP 6499 AND LOT 2 DP 304502 AND EASEMENTS OVER PART LOT 152 DEEDS 83, LOT 153 DEEDS 83 & LOT 154 DFFDS 83

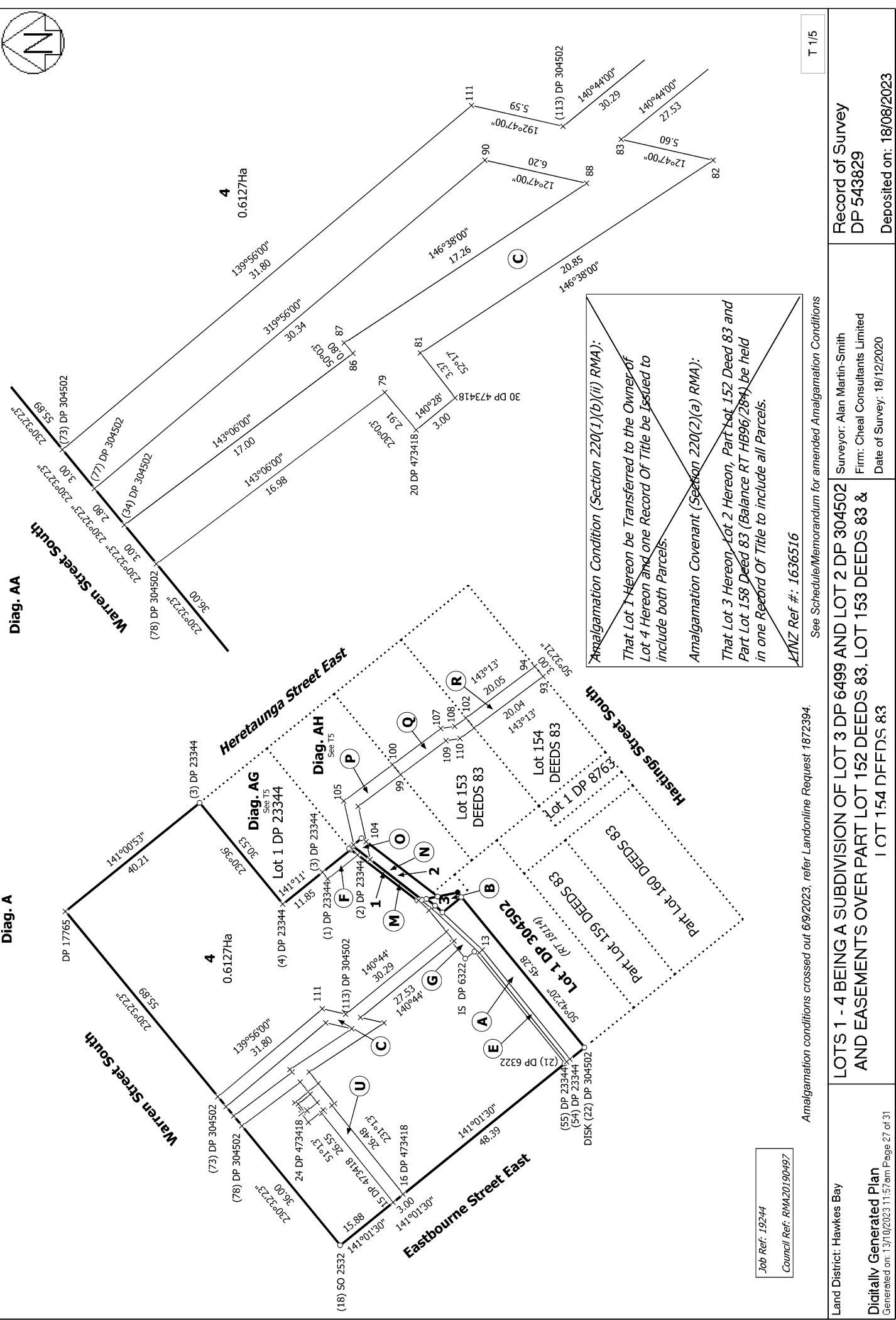
Surveyor: Alan Martin-Smith  
Firm: Cheal Consultants Limited  
Date of Survey: 18/12/2020

Record of Survey  
DP 543829  
Deposited on: 18/08/2023



Diag. AA

Diag. A



**Amalgamation Condition (Section 220(1)(b)(ii) RMA):**  
 That Lot 1 Hereon be Transferred to the Owner of Lot 4 Hereon and one Record Of Title be Issued to include both Parcels.

**Amalgamation Covenant (Section 220(2)(a) RMA):**  
 That Lot 3 Hereon, Lot 2 Hereon, Part Lot 152 Deed 83 and Part Lot 158 Deed 83 (Balance RT HB96/284) be held in one Record Of Title to include all Parcels.

KINZ Ref #: 1636516

See Schedule/Memorandum for amended Amalgamation Conditions

Job Ref: 19244  
 Council Ref: RMA20190497

Amalgamation conditions crossed out 6/9/2023, refer Landline Request 1872394.

T 1/5

Land District: Hawkes Bay

LOTS 1 - 4 BEING A SUBDIVISION OF LOT 3 DP 6499 AND LOT 2 DP 304502 AND EASEMENTS OVER PART LOT 152 DEEDS 83, LOT 153 DEEDS 83 & LOT 154 DFFDS 83

Record of Survey DP 543829

Digitally Generated Plan

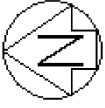
Generated on: 13/10/2023 11:57:00am Page 27 of 31

Surveyor: Alan Martin-Smith

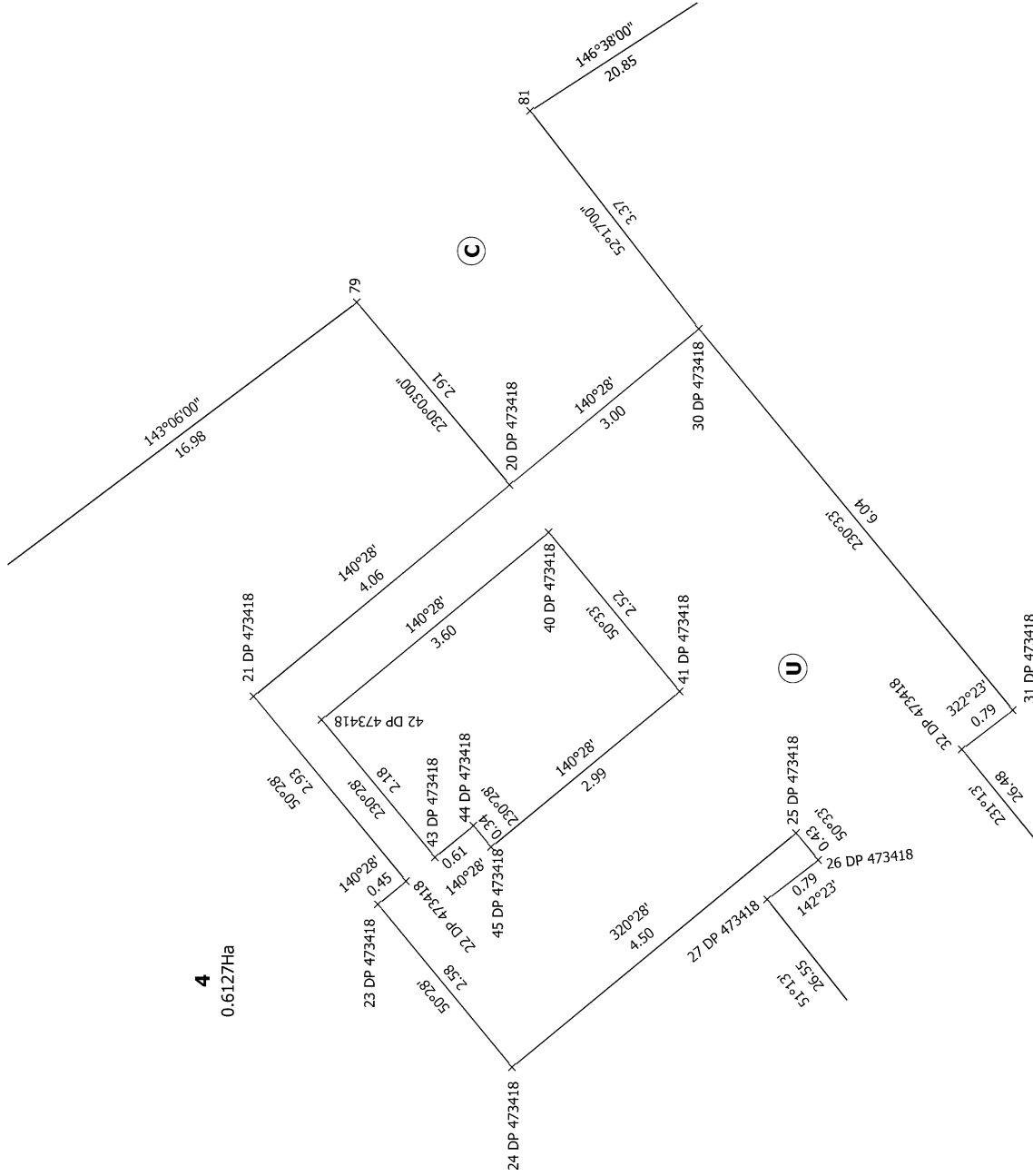
Firm: Cheal Consultants Limited

Date of Survey: 18/12/2020

Deposited on: 18/08/2023



Diag. AB



4  
0.6127Ha

Job Ref: 19244  
Council Ref: RMA20190497

T 2/5

Land District: Hawkes Bay

Digitally Generated Plan  
Generated on: 13/10/2023 11:57am Page 28 of 31

LOTS 1 - 4 BEING A SUBDIVISION OF LOT 3 DP 6499 AND LOT 2 DP 304502  
AND EASEMENTS OVER PART LOT 152 DEEDS 83, LOT 153 DEEDS 83 &  
LOT 154 DFFDS 83

Surveyor: Alan Martin-Smith  
Firm: Cheal Consultants Limited  
Date of Survey: 18/12/2020

Record of Survey  
DP 543829  
Deposited on: 18/08/2023



Diag. AC

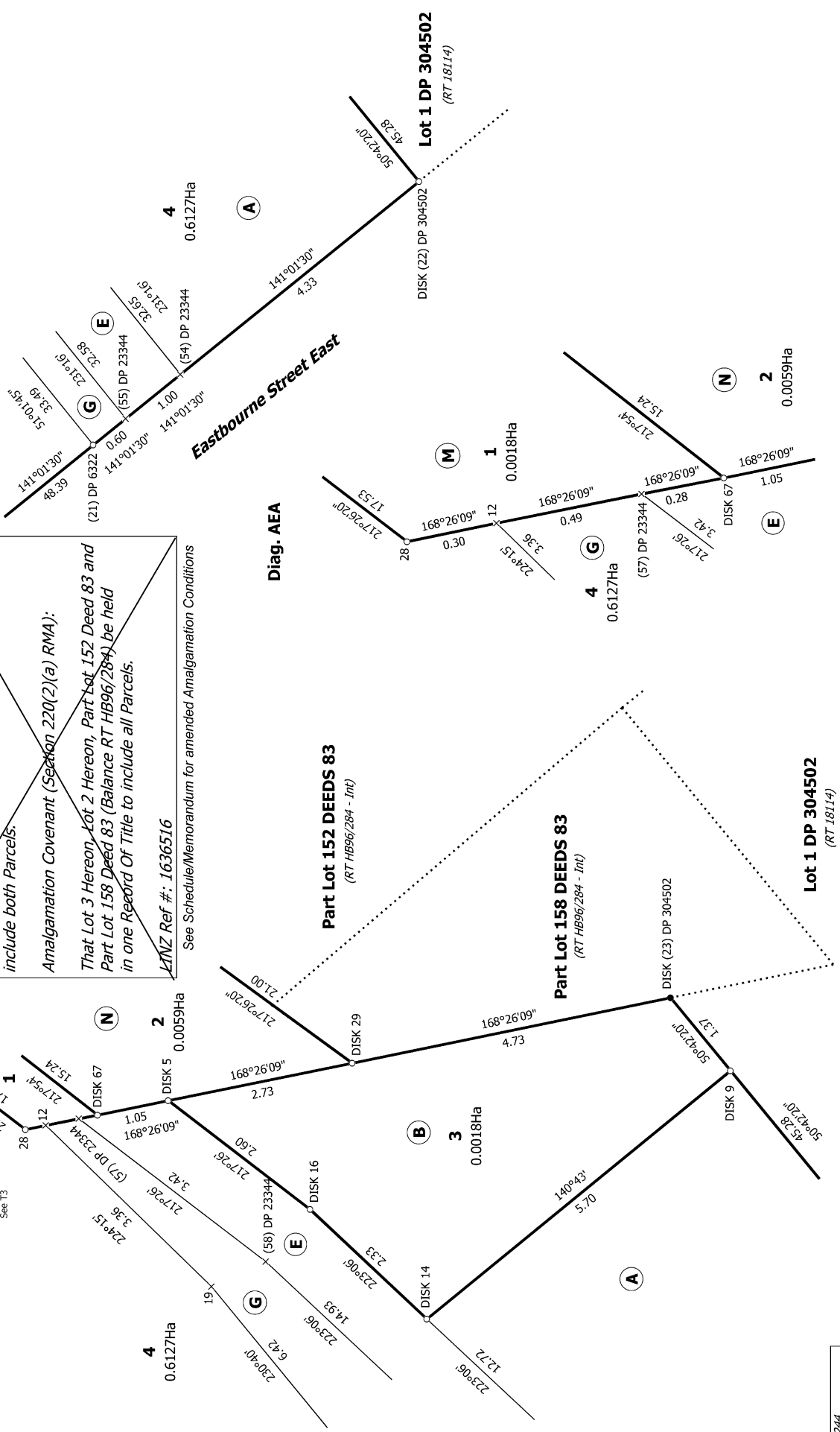
**Amalgamation Condition (Section 220(1)(b)(ii) RMA):**  
 That Lot 1 Hereon be Transferred to the Owner of Lot 4 Hereon and one Record Of Title be Issued to include both Parcels.

**Amalgamation Covenant (Section 220(2)(a) RMA):**  
 That Lot 3 Hereon, Lot 2 Hereon, Part Lot 152 Deed 83 and Part Lot 158 Deed 83 (Balance RT HB96/284) be held in one Record Of Title to include all Parcels.

**MINZ Ref #: 1636516**  
 See Schedule/Memorandum for amended Amalgamation Conditions

Diag. AE

Diag. AEA  
See T3



T 3/5

Job Ref: 19244  
 Council Ref: RMA20190497

Amalgamation conditions crossed out 6/9/2023, refer Landonline Request 1872394.

Land District: Hawkes Bay

Digitally Generated Plan

Generated on: 13/10/2023 11:57:am Page 29 of 31

LOTS 1 - 4 BEING A SUBDIVISION OF LOT 3 DP 6499 AND LOT 2 DP 304502

AND EASEMENTS OVER PART LOT 152 DEEDS 83, LOT 153 DEEDS 83 & LOT 154 DFFDS 83

Surveyor: Alan Martin-Smith

Firm: Cheal Consultants Limited

Date of Survey: 18/12/2020

Record of Survey

DP 543829

Deposited on: 18/08/2023



