



CSD Plan - DP 538206

Survey Number DP 538206
Surveyor Reference 6479 Parkside S1
Surveyor Rogan Hampson
Survey Firm Hampson & Associates Ltd
Surveyor Declaration I Rogan Hampson, being a licensed cadastral surveyor, certify that:
(a) this dataset provided by me and its related survey are accurate, correct and in accordance with the Cadastral Survey Act 2002 and the Rules for Cadastral Survey 2010, and
(b) the survey was undertaken by me or under my personal direction.
Declared on 09 Dec 2021 02:53 PM

Survey Details

Dataset Description First Stage Unit Development on Lot 8 DP 480614
Purpose First Stage Unit Plan
Status Deposited **Type** Survey
Land District North Auckland **Survey Class** Class A
Meridional Circuit Mount Eden 2000 **Vertical Datum** None

Survey Dates

Surveyed Date 04/10/2021 **Certified Date** 09/12/2021
Submitted Date 09/12/2021 14:53:47 **Survey Approval Date** 10/12/2021
Deposit Date 08/07/2022

Referenced Surveys

Survey Number	Land District	Bearing Correction
DP 480614	North Auckland	0°00'00"

Territorial Authorities

Auckland Council

Comprised In

RT 671991

Created Parcels

Parcels	Parcel Intent	Area	RT Reference
Principal Unit 1G Deposited Plan 538206	Principal Unit		897074
Principal Unit 2G Deposited Plan 538206	Principal Unit		897075
Principal Unit 3G Deposited Plan 538206	Principal Unit		897076
Principal Unit 4G Deposited Plan 538206	Principal Unit		897077
Principal Unit 104 Deposited Plan 538206	Principal Unit		897081
Principal Unit 101 Deposited Plan 538206	Principal Unit		897078
Principal Unit 102 Deposited Plan 538206	Principal Unit		897079
Principal Unit 103 Deposited Plan 538206	Principal Unit		897080
Principal Unit 201 Deposited Plan 538206	Principal Unit		897082
Principal Unit 202 Deposited Plan 538206	Principal Unit		897083
Principal Unit 203 Deposited Plan 538206	Principal Unit		897084
Principal Unit 204 Deposited Plan 538206	Principal Unit		897085



CSD Plan - DP 538206

Created Parcels

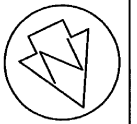
Parcels	Parcel Intent	Area	RT Reference
Principal Unit 301 Deposited Plan 538206	Principal Unit		897086
Principal Unit 302 Deposited Plan 538206	Principal Unit		897087
Principal Unit 303 Deposited Plan 538206	Principal Unit		897088
Principal Unit 304 Deposited Plan 538206	Principal Unit		897089
Principal Unit 401 Deposited Plan 538206	Principal Unit		897090
Principal Unit 402 Deposited Plan 538206	Principal Unit		897091
Principal Unit 403 Deposited Plan 538206	Principal Unit		897092
Principal Unit 404 Deposited Plan 538206	Principal Unit		897093
Principal Unit 501 Deposited Plan 538206	Principal Unit		897094
Principal Unit 502 Deposited Plan 538206	Principal Unit		897095
Principal Unit 503 Deposited Plan 538206	Principal Unit		897096
Principal Unit 109P Deposited Plan 538206	Principal Unit		897097
Principal Unit 110P Deposited Plan 538206	Principal Unit		897098
Principal Unit 111P Deposited Plan 538206	Principal Unit		897099
Principal Unit 112P Deposited Plan 538206	Principal Unit		897100
Principal Unit 113P Deposited Plan 538206	Principal Unit		897101
Principal Unit 114P Deposited Plan 538206	Principal Unit		897102
Principal Unit 115P Deposited Plan 538206	Principal Unit		897103
Principal Unit 116P Deposited Plan 538206	Principal Unit		897104
Principal Unit 117P Deposited Plan 538206	Principal Unit		897105
Principal Unit 118P Deposited Plan 538206	Principal Unit		897106
Principal Unit 119P Deposited Plan 538206	Principal Unit		897107
Principal Unit 120P Deposited Plan 538206	Principal Unit		897108
Principal Unit 121P Deposited Plan 538206	Principal Unit		897109
Principal Unit 122P Deposited Plan 538206	Principal Unit		897110
Principal Unit 123P Deposited Plan 538206	Principal Unit		897111
Future Development Unit 1B Deposited Plan 538206	Future Development Unit		1032684
Future Development Unit 2C Deposited Plan 538206	Future Development Unit		1032685
Total Area		<hr/>	0.0000 Ha



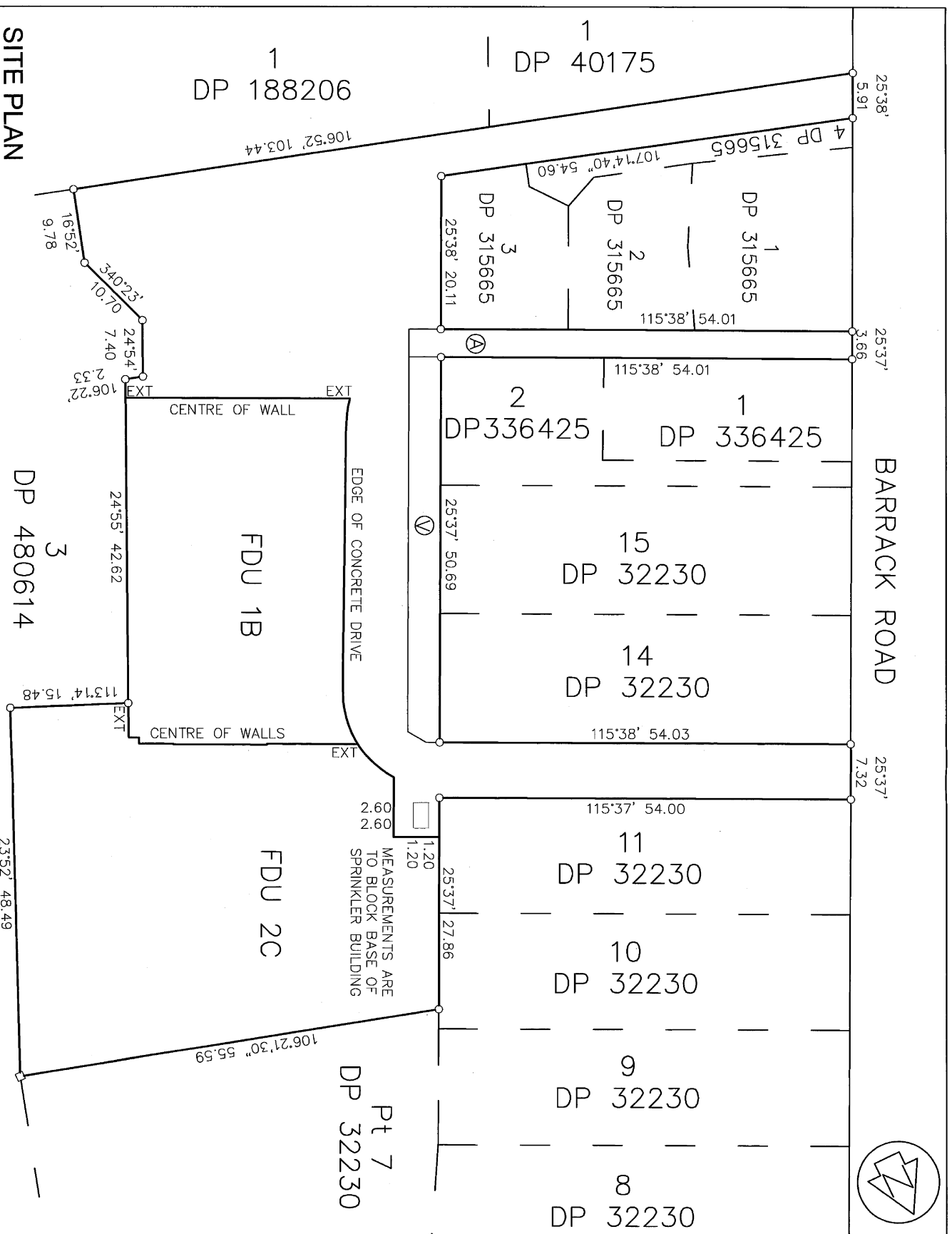
Mark and Vector

Survey Number DP 538206
Meridional Circuit Mount Eden 2000

***** End of Report *****



NOTES:
 UNLESS SHOWN OTHERWISE:
 1. PRINCIPAL UNIT BOUNDARIES (PUS) ARE TO THE CENTRE LINE OF WALLS, GLAZING, HANDRAILS OR STRUCTURES. PARKING PU (SUFFIXED P) BOUNDARIES ARE EQUIDISTANT BETWEEN COLUMNS, THE INTERNAL FACE OF CONCRETE WALLS OR THE CENTRE LINE OF THE STORAGE UNIT WALLS.
 2. THE UPPER AND LOWER LIMITS OF PU'S ARE TO THE CENTRE OF THE CONCRETE FLOOR SLABS. THE UPPER LIMITS OF LEVEL 5 PU'S ARE TO THE UNDERSIDE OF THE SUSPENDED CEILINGS.
 3. UPPER AND LOWER PRINCIPAL UNIT BOUNDARIES ON EXTERIOR PARKING UNITS (SUFFIXED P) ARE TO THE UPPER FINISHED SURFACE OF THE SEALED PARKING AREAS AND 2.20m ABOVE THE UPPER FINISHED SURFACE OF THE SEALED PARKING AREAS
 4. AREAS V & A ARE COMMON PROPERTY
 FC=EDGE OF CONCRETE
 EXT=EXTENSION



SITE PLAN

SHEET 1/9

LAND DISTRICT: NORTH AUCKLAND
 DATASET TYPE: SURVEYED
 DATUM: GEODETIC 2000

FIRST STAGE UNIT DEVELOPMENT
 ON LOT 8 DP 480614

TERRITORIAL AUTHORITY: Auckland Council
 Surveyed by: HAMPSON & ASSOCIATES LTD
 Scale: 1:500
 Date: October 2021

Comprised in: DP 538206

DP 188206

DP 40175

DP 315665

DP 315665

DP 315665

DP 315665

DP 336425

DP 336425

DP 32230

DP 32230

DP 32230

DP 32230

DP 32230

DP 32230

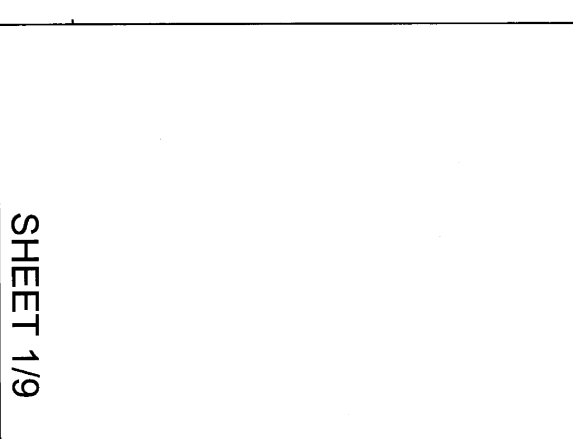
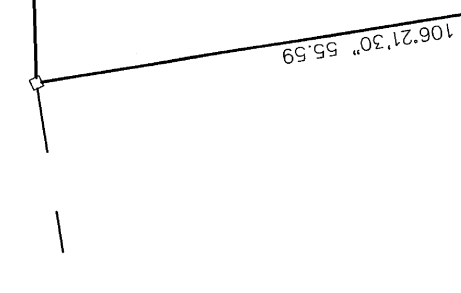
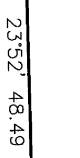
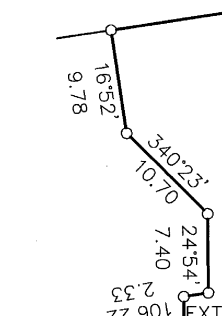
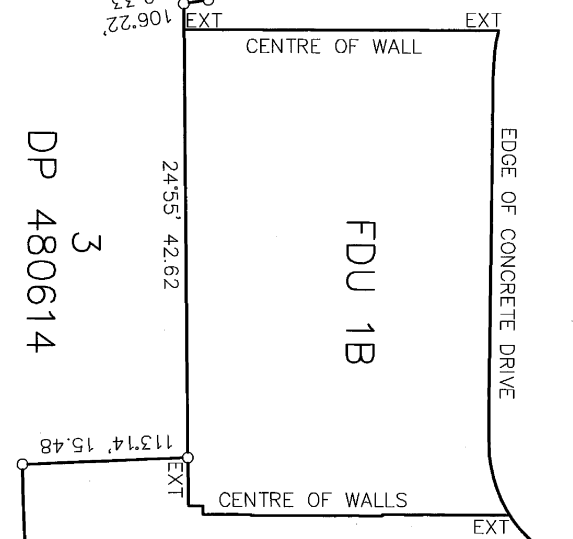
Pt 7
 DP 32230

FDU 1B

FDU 2C

DP 480614

BARRACK ROAD



3
DP 315665

2
DP 336425

15
DP 32230

14
DP 32230

11
DP 32230

10
DP 32230

Pt 7
DP 32230

COMMON PROPERTY

COMMON PROPERTY

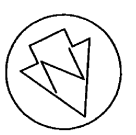
STAIRS LIFTS

FDU 1B

FDU 2C

3
DP 480614

BASEMENT FLOOR PLAN



LAND DISTRICT NORTH AUCKLAND
DATASET TYPE SURVEYED
DATUM GEODETIC 2000

FIRST STAGE UNIT DEVELOPMENT
ON LOT 8 DP 480614

TERRITORIAL AUTHORITY Auckland Council
Surveyed by HAMPSON & ASSOCIATES LTD
Scale 1:300 Date October 2021

Comprised in
File 6479
Received Instructions

DP 538206

SHEET 2/9

DP 40175
1

DP 315665
3

DP 336425
2

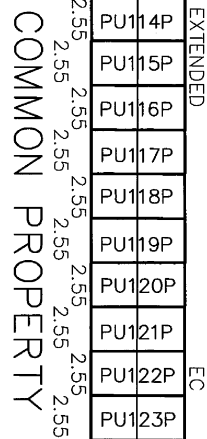
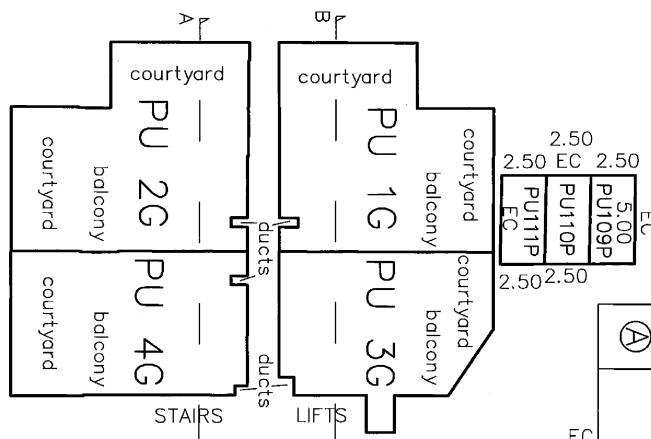
DP 32230
15

DP 32230
14

DP 32230
11



DP 188206
1



DP 480614
3

FDU 1B

FDU 2C
A B

GROUND FLOOR PLAN

SHEET 3/9

LAND DISTRICT NORTH AUCKLAND
 DATASET TYPE SURVEYED
 DATUM GEODETIC 2000

FIRST STAGE UNIT DEVELOPMENT
 ON LOT 8 DP 480614

TERRITORIAL AUTHORITY Auckland Council
 Surveyed by HAMPSON & ASSOCIATES LTD
 Scale 1:300 Date October 2021

Comprised in
 File 6479
 Received Instructions
 DP 538206

DP 40175
1

DP 315665
3

DP 336425
2

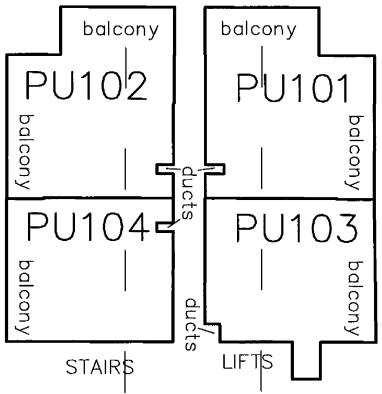
DP 32230
15

DP 32230
14

DP 32230
11



DP 188206
1



COMMON PROPERTY

COMMON PROPERTY

FDU 1B

FDU 2C

DP 480614
3

FIRST FLOOR PLAN

SHEET 4/9

LAND DISTRICT NORTH AUCKLAND
 DATASET TYPE SURVEYED
 DATUM GEODETIC 2000

FIRST STAGE UNIT DEVELOPMENT
 ON LOT 8 DP 480614

TERRITORIAL AUTHORITY Auckland Council
 Surveyed by HAMPSON & ASSOCIATES LTD
 Scale 1:300 Date October 2021

Comprised in
 File 6479
 Instructions DP 538206

DP 40175
1

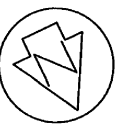
DP 315665
3

DP 336425
2

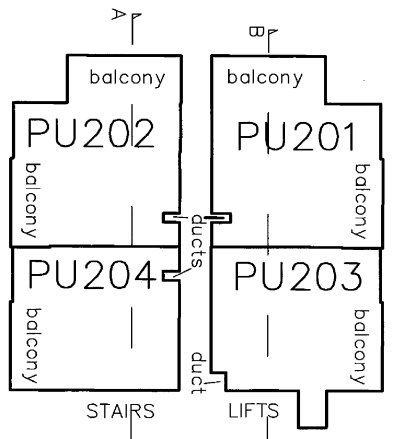
DP 32230
15

DP 32230
14

DP 32230
11



DP 188206
1



COMMON PROPERTY

EC

FDU 1B

FDU 2C

DP 480614
3

SECOND FLOOR PLAN

SHEET 5/9

LAND DISTRICT NORTH AUCKLAND
 DATASET TYPE SURVEYED
 DATUM GEODETIC 2000

FIRST STAGE UNIT DEVELOPMENT
 ON LOT 8 DP 480614

TERRITORIAL AUTHORITY Auckland Council
 Surveyed by HAMPSON & ASSOCIATES LTD
 Scale 1:300
 Date October 2021

Comprised in
 File 6479
 Received Instructions

DP 538206

DP 40175
1

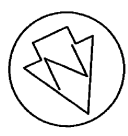
DP 315665
3

DP 336425
2

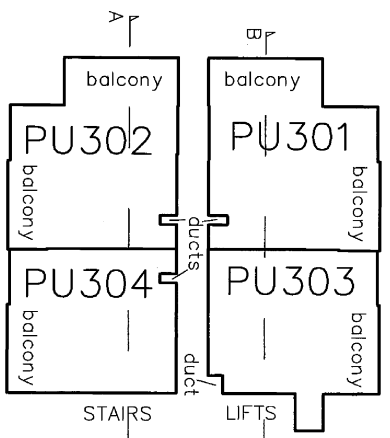
DP 32230
15

DP 32230
14

DP 32230
11



DP 188206
1



COMMON PROPERTY

FDU 1B

FDU 2C

DP 480614
3

THIRD FLOOR PLAN

SHEET 6/9

LAND DISTRICT: NORTH AUCKLAND
 DATASET TYPE: SURVEYED
 DATUM: GEODETIC 2000

FIRST STAGE UNIT DEVELOPMENT
 ON LOT 8 DP 480614

TERRITORIAL AUTHORITY: Auckland Council
 Surveyed by: HAMPSON & ASSOCIATES LTD
 Scale: 1:300
 Date: October 2021

Comprised in:
 File: 6479
 Received Instructions

DP 538206

DP 40175
1

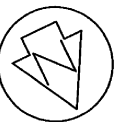
DP 315665
3

DP 336425
2

DP 32230
15

DP 32230
14

DP 32230
11

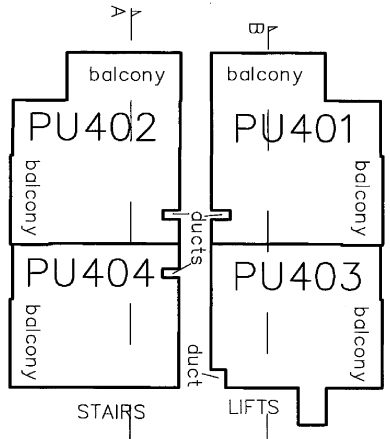


DP 188206
1

DP 480614
3

FOURTH FLOOR PLAN

COMMON PROPERTY



FDU 1B

FDU 2C

LAND DISTRICT: NORTH AUCKLAND
 DATASET TYPE: SURVEYED
 DATUM: GEODETIC 2000

FIRST STAGE UNIT DEVELOPMENT
 ON LOT 8 DP 480614

TERRITORIAL AUTHORITY: Auckland Council
 Surveyed by: HAMPSON & ASSOCIATES LTD
 Scale: 1:300
 Date: October 2021

Comprised in:
 File: 6479
 Received Instructions

DP 538206

SHEET 7/9

DP 40175
1

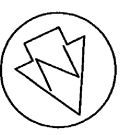
DP 315665
3

DP 336425
2

DP 32230
15

DP 32230
14

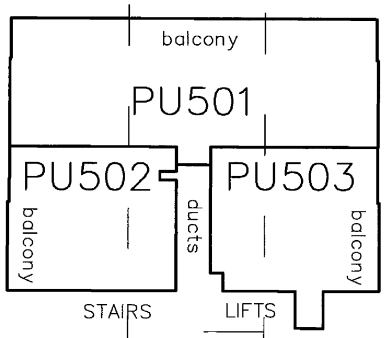
DP 32230
11



DP 188206
1

DP 480614
3

COMMON PROPERTY



FDU 1B

FDU 2C

FIFTH FLOOR PLAN

SHEET 8/9

LAND DISTRICT NORTH AUCKLAND
DATASET TYPE SURVEYED
DATUM GEODETIC 2000

FIRST STAGE UNIT DEVELOPMENT
ON LOT 8 DP 480614

TERRITORIAL AUTHORITY Auckland Council
Surveyed by HAMPSON & ASSOCIATES LTD
Scale 1:300
Date October 2021

Comprised in
File 6479
Received Instructions

DP 538206

COMMON
PROPERTY

FIFTH FLOOR
FOURTH FLOOR
THIRD FLOOR
SECOND FLOOR
FIRST FLOOR
GROUND FLOOR

COMMON
PROPERTY

PU501	PU503
PU401	PU403
PU301	PU303
PU201	PU203
PU101	PU103
court -yard	PU 1G PU 3G

LIFTS

FDU 1B

FDU 2C

COMMON
PROPERTY

COMMON
PROPERTY

SECTION B-B'

FIFTH FLOOR
FOURTH FLOOR
THIRD FLOOR
SECOND FLOOR
FIRST FLOOR
GROUND FLOOR

COMMON
PROPERTY

PU501	PU502
PU402	PU404
PU302	PU304
PU202	PU204
PU102	PU104
court -yard	PU 2G PU 4G

LIFTS

FDU 1B

FDU 2C

COMMON
PROPERTY

SECTION A-A'

SHEET 9/9

LAND DISTRICT NORTH AUCKLAND
DATASET TYPE SURVEYED
DATUM GEODETIC 2000

FIRST STAGE UNIT DEVELOPMENT
ON LOT 8 DP 480614

TERRITORIAL AUTHORITY Auckland Council
Surveyed by HAMPSON & ASSOCIATES LTD
Scale 1:200 Date October 2021

Comprised in
File 6479
Received Instructions

DP 538206

Schedule / Memorandum

Land Registration District

North Auckland

Plan Number

DP 538206

Territorial Authority (the Council)

Auckland

Schedule of Existing Easements in Gross

Purpose	Shown	Servient Tenement (Burdened Land)	Document
Right to convey Electricity	A & V	Lot 8 DP 480614	12065872.1
Right to convey Telecommunications	A	Lot 8 DP 480614	12065872.2

Land Covenant in Easement Instrument 10053825.9

Land Covenant in Easement Instrument 10157293.2