

# Record of Survey - DP 534146

**Survey Number** DP 534146  
**Surveyor Reference** 13065-8 Crest Lane  
**Surveyor** Gavin Walter Read  
**Survey Firm** Clark Fortune McDonald & Associates  
**Surveyor Declaration** I Gavin Walter Read, being a licensed cadastral surveyor, certify that--  
 (a) this dataset provided by me and its related survey are accurate, correct and in accordance with the Cadastral Survey Act 2002 and Cadastral Survey Rules 2021; and  
 (b) the survey was undertaken by me or under my personal direction.  
 Declared on 12 Apr 2023 10:24 AM

## Survey Details

**Dataset Description** Lots 1 & 2 Being Being Subdivision of Lot 6 DP 30754 & Easement over Lot 5 DP 30754  
**Purpose** LT Subdivision  
**Status** Deposited **Type** Survey  
**Land District** Canterbury **Survey Class** Class A  
**Meridional Circuit** Mount Pleasant 2000 **Vertical Datum** None

## Survey Dates

**Surveyed Date** 09/02/2023 **Certified Date** 12/04/2023  
**Submitted Date** 12/04/2023 10:24:59 **Survey Approval Date** 12/04/2023  
**Deposit Date** 16/05/2023

## Referenced Surveys

Survey Number	Land District	Bearing Correction
DP 30754	Canterbury	0°00'00"
DP 34677	Canterbury	0°00'00"
DP 58764	Canterbury	0°00'00"
FB 2451/94	Canterbury	0°00'00"
DP 52766	Canterbury	0°00'00"
SO 457430	Canterbury	0°00'00"
DP 461501	Canterbury	0°00'00"
DP 583997	Canterbury	0°00'00"

## Territorial Authorities

Christchurch City

## Comprised In

RT CB13K/702  
 RT CB13K/703

## Created Parcels

Parcels	Parcel Intent	Area	RT Reference
Lot 1 Deposited Plan 534146	Fee Simple Title	0.0858 Ha	879448
Lot 2 Deposited Plan 534146	Fee Simple Title	0.0043 Ha	879449
Area A Deposited Plan 534146	Easement		



# Record of Survey - DP 534146

---

## Created Parcels

Parcels	Parcel Intent	Area	RT Reference
Area B Deposited Plan 534146	Easement		
Area C Deposited Plan 534146	Easement		
Area D Deposited Plan 534146	Easement		
Area E Deposited Plan 534146	Easement		
Area F Deposited Plan 534146	Easement		
<b>Total Area</b>		<hr/> 0.0901 Ha	

# Mark and Vector

Survey Number DP 534146

Meridional Circuit Mount Pleasant 2000

From	To	Code	Bearing	Adpt Surv	Bearing Correction	Distance	Adpt Surv	Class
IS 1 DP 534146	MN 16 DP 414077	ob0	119°39'31" M			725.15 M		
MN 16 DP 414077	IT I DP 300989	ob2	310°47'55" M			779.74 M		
IT I DP 300989	IS XIII DP 30754	ob3	228°15'30" M			192.56 M		
IS XIII DP 30754	IS 1 DP 534146	ob9	102°12'20" M			106.21 M		
IT I DP 300989	IS 12 DP 361257	ob4	266°33'00" A	DP 461501	0°00'00"	102.37 A	DP 461501	
IS 12 DP 361257	IS II DP 317885	ob15	231°19'00" A	DP 461501	0°00'00"	12.03 A	DP 461501	
IS II DP 317885	MA III DP 317885	ob16	212°18'30" A	DP 583997	0°00'00"	28.58 A	DP 583997	
MA III DP 317885	IS X FB 2451/95	ob17	205°34'20" A	DP 583997	0°00'00"	122.19 A	DP 583997	
IS X FB 2451/95	IT II DP 18654	ob18	27°04'30" A	FB 2451/94	0°00'00"	14.62 A	FB 2451/94	
IT II DP 18654	IT IV DP 52766	ob19	254°41'30" A	DP 58764	0°00'00"	58.12 A	DP 58764	
IT IV DP 52766	IS XIV DP 30754	ob20	79°08'30" A	DP 52766	0°00'00"	66.21 A	DP 52766	
IS XIV DP 30754	IS XIII DP 30754	ob21	64°22'00" A	DP 30754	0°00'00"	22.50 A	DP 30754	
IT I DP 300989	IS VII DP 30754	ob5	215°31'20" M			157.47 M		
IT I DP 300989	PEG (23) DP 30754	ob6	199°22'40" M			196.79 M		
IT I DP 300989	PEG (18) DP 30754	ob7	194°03'10" M			164.79 M		
IS 1 DP 534146	NAIL 2 DP 534146	ob1	319°47'00" M			36.39 M		
NAIL 2 DP 534146	IS 3 DP 534146	ob23	48°01'00" M			19.87 M		
IS 3 DP 534146	IS 4 DP 534146	ob28	105°57'00" M			29.88 M		
IS 4 DP 534146	IS 1 DP 534146	ob29	211°20'00" M			38.48 M		
NAIL 2 DP 534146	IS 5 DP 534146	ob24	232°04'00" M			14.77 M		
IS 5 DP 534146	IS 3 DP 534146	ob30	49°44'50" M			34.62 M		
IS 5 DP 534146	IT 6 DP 534146	ob31	153°19'30" M			21.10 M		
IT 6 DP 534146	IS 8 DP 534146	ob32	128°51'00" M			17.50 M		
IS 8 DP 534146	IT 9 DP 534146	ob35	49°31'00" M			33.47 M		
IT 9 DP 534146	IS 3 DP 534146	ob37	324°01'00" M			37.66 M		
IT I DP 300989	TB II DP 42977	ob8	185°51'00" A	SO 457430	0°00'00"	26.97 A	SO 457430	
TB II DP 42977	IT II DP 34677	ob38	187°38'00" A	SO 457430	0°00'00"	54.22 A	SO 457430	
IT II DP 34677	IT I DP 39448	ob39	295°21'30" A	SO 457430	0°00'00"	33.54 A	SO 457430	
IT I DP 39448	IT I DP 300989	ob40	31°18'20" A	SO 457430	0°00'00"	77.48 A	SO 457430	
IS VII DP 30754	IS IX DP 30754	ob10	45°40'50" A	DP 30754	0°00'00"	40.37 A	DP 30754	
IS IX DP 30754	IS III DP 30754	ob41	139°30'00" A	DP 30754	0°00'00"	13.84 A	DP 30754	
IS III DP 30754	IT VI DP 11956	ob42	139°30'00" A	DP 30754	0°00'00"	34.74 A	DP 30754	
IT VI DP 11956	PEG V DP 11956	ob43	23°11'00" A	DP 30754	0°00'00"	37.02 A	DP 30754	

# Mark and Vector

Survey Number DP 534146

Meridional Circuit Mount Pleasant 2000

From	To	Code	Bearing	Adpt Surv	Bearing Correction	Distance	Adpt Surv	Class
PEG V DP 11956	IT IV DP 11956	ob44	23°11'00"	A DP 30754	0°00'00"	13.26 A	DP 30754	
IT IV DP 11956	IT II DP 34677	ob45	7°41'00"	A DP 34677	0°00'00"	10.26 A	DP 34677	
IS VII DP 30754	IT VI DP 30754	ob11	225°40'50"	A DP 30754	0°00'00"	21.07 A	DP 30754	
IS XIV DP 30754	PEG (1) DP 30754	ob22	182°22'00"	A DP 30754	0°00'00"	3.74 A	DP 30754	
PEG (1) DP 30754	UNMK (2) DP 30754	ob52	48°26'00"	A DP 30754	0°00'00"	0.53 A	DP 30754	
UNMK (2) DP 30754	UNMK (3) DP 30754	ob53	48°26'00"	A DP 30754	0°00'00"	0.26 A	DP 30754	Class A
UNMK (3) DP 30754	PEG (4) DP 30754	ob55	48°26'00"	A DP 30754	0°00'00"	6.89 A	DP 30754	
PEG (4) DP 30754	IS XIV DP 30754	ob56	256°21'00"	A DP 30754	0°00'00"	5.75 A	DP 30754	
UNMK (2) DP 30754	UNMK (5) DP 30754	ob54	101°00'00"	A DP 30754	0°00'00"	6.65 A	DP 30754	Class A
UNMK (5) DP 30754	UNMK (6) DP 30754	ob57	48°28'00"	A DP 30754	0°00'00"	21.55 A	DP 30754	Class A
UNMK (6) DP 30754	UNMK (7) DP 30754	ob58	25°31'00"	C		1.02 C		
UNMK (7) DP 30754	UNMK (8) DP 30754	ob60	228°28'00"	A DP 30754	0°00'00"	22.54 A	DP 30754	Class A
UNMK (8) DP 30754	UNMK (3) DP 30754	ob62	281°00'00"	A DP 30754	0°00'00"	6.14 A	DP 30754	Class A
IT VI DP 30754	PEG (9) DP 30754	ob46	3°48'00"	A DP 30754	0°00'00"	8.05 A	DP 30754	
PEG (9) DP 30754	UNMK (10) DP 30754	ob47	185°20'00"	A DP 30754	0°00'00"	2.08 A	DP 30754	
UNMK (10) DP 30754	UNMK (11) DP 30754	ob48	185°20'00"	A DP 30754	0°00'00"	1.04 A	DP 30754	
UNMK (11) DP 30754	UNMK (12) DP 30754	ob49	185°20'00"	A DP 30754	0°00'00"	1.04 A	DP 30754	Class A
UNMK (12) DP 30754	PEG (13) DP 30754	ob51	185°20'00"	A DP 30754	0°00'00"	2.08 A	DP 30754	
PEG (13) DP 30754	IT VI DP 30754	ob63	178°37'00"	A DP 30754	0°00'00"	1.84 A	DP 30754	
UNMK (6) DP 30754	UNMK (12) DP 30754	ob59	107°08'00"	C		36.26 C		Class A
UNMK (7) DP 30754	UNMK (11) DP 30754	ob61	107°08'00"	C		35.90 C		Class A
IS VII DP 30754	PEG 10 DP 534146	ob12	100°54'00"	A DP 30754	0°00'00"	19.81 A	DP 30754	
PEG 10 DP 534146	PEG 11 DP 534146	ob64	50°30'00"	A DP 30754	0°00'00"	12.06 A	DP 30754	Class A
PEG 11 DP 534146	UNMK (15) DP 30754	ob65	92°08'00"	A DP 30754	0°00'00"	3.37 A	DP 30754	Class A
UNMK (15) DP 30754	PEG (20) DP 30754	ob68	92°08'00"	A DP 30754	0°00'00"	3.33 A	DP 30754	Class A

# Mark and Vector

Survey Number DP 534146

Meridional Circuit Mount Pleasant 2000

From	To	Code	Bearing	Adpt Surv	Bearing Correction	Distance	Adpt Surv	Class
PEG (20) DP 30754	IS III DP 30754	ob71	9°47'00"	A DP 30754	0°00'00"	14.21 A	DP 30754	
UNMK (11) DP 30754	UNMK (16) DP 30754	ob50	83°28'00"	A DP 30754	0°00'00"	31.26 A	DP 30754	Class A
UNMK (16) DP 30754	PEG 10 DP 534146	ob72	52°23'00"	A DP 30754	0°00'00"	4.08 A	DP 30754	Class A
IS VII DP 30754	PEG 12 DP 534146	ob13	126°14'00"	A DP 30754	0°00'00"	22.81 A	DP 30754	
PEG 12 DP 534146	UNMK (17) DP 30754	ob73	337°06'00"	A DP 30754	0°00'00"	6.71 A	DP 30754	Class A
UNMK (17) DP 30754	UNMK (12) DP 30754	ob75	263°28'00"	A DP 30754	0°00'00"	30.92 A	DP 30754	Class A
PEG 12 DP 534146	PEG 10 DP 534146	ob74	6°10'00"	A DP 30754	0°00'00"	9.79 A	DP 30754	Class A
PEG (23) DP 30754	PEG 13 DP 534146	ob76	44°23'00"	C		25.13 C		
PEG 13 DP 534146	UNMK (19) DP 30754	ob78	44°34'00"	C		2.50 C		Class A
UNMK (19) DP 30754	PEG (18) DP 30754	ob84	44°34'00"	C		8.49 C		Class A
PEG 13 DP 534146	PEG 14 DP 534146	ob79	306°22'00"	C		25.25 C		Class A
PEG 14 DP 534146	PEG 12 DP 534146	ob81	335°28'00"	C		12.16 C		Class A
PEG (18) DP 30754	PEG 15 DP 534146	ob77	334°38'00"	C		24.67 C		Class A
PEG 15 DP 534146	PEG (20) DP 30754	ob82	337°17'00"	C		14.16 C		Class A
PEG 11 DP 534146	UNMK 16 DP 534146	ob66	137°36'00"	C		9.07 C		Class A
UNMK 16 DP 534146	PEG 15 DP 534146	ob83	137°36'00"	C		8.97 C		Class A
UNMK (15) DP 30754	UNMK 16 DP 534146	ob69	157°17'00"	C		7.12 C		Class A
UNMK (19) DP 30754	PEG 15 DP 534146	ob85	350°44'00"	C		28.71 C		Class A
PEG 13 DP 534146	UNMK 17 DP 534146	ob80	350°44'00"	C		25.62 C		Class A
UNMK 17 DP 534146	UNMK 16 DP 534146	ob86	337°17'00"	C		12.41 C		Class A
IT 6 DP 534146	PEG 14 DP 534146	ob33	232°38'00"	M		3.15 M		
IT 6 DP 534146	PEG 12 DP 534146	ob34	320°29'00"	M		11.87 M		
NAIL 2 DP 534146	PEG 10 DP 534146	ob25	223°49'00"	M		12.54 M		
NAIL 2 DP 534146	PEG 11 DP 534146	ob26	155°48'00"	M		1.51 M		

# Mark and Vector

Survey Number DP 534146

Meridional Circuit Mount Pleasant 2000

From	To	Code	Bearing	Adpt Surv	Bearing Correction	Distance	Adpt Surv	Class
NAIL 2 DP 534146	PEG 15 DP 534146	ob27	138°59'00"	M		19.48 M		
IS VII DP 30754	PEG (2) DP 30754	ob14	92°25'00"	A DP 30754	0°00'00"	17.38 A	DP 30754	
PEG (2) DP 30754	UNMK 18 DP 534146	ob87	50°30'00"	C		11.57 C		
UNMK 18 DP 534146	UNMK (22) DP 30754	ob88	50°30'00"	C		5.34 C		Class A
UNMK (22) DP 30754	PEG (24) DP 30754	ob89	50°30'00"	C		1.23 C		
PEG (24) DP 30754	IS III DP 30754	ob90	43°28'00"	A DP 30754	0°00'00"	9.47 A	DP 30754	
PEG 11 DP 534146	UNMK 18 DP 534146	ob67	317°30'00"	C		3.66 C		Class A
UNMK (15) DP 30754	UNMK (22) DP 30754	ob70	344°29'00"	C		6.46 C		Class A
IS 8 DP 534146	PEG 13 DP 534146	ob36	144°37'00"	M		7.24 M		

Mark Name	Mark Condition	Description
IS 1 DP 534146		0.2d
IS 12 DP 361257		fl in footpath
IS 3 DP 534146		D0.2
IS 4 DP 534146		Fl in seal
IS II DP 317885		FL
IS IX DP 30754		maybe there but down 2.0m
IS VII DP 30754		now under shed
IS XIII DP 30754		fl in seal
IT 6 DP 534146		D.01
IT I DP 300989		FL in seal
MA III DP 317885		MASONRY ANCHOR FL IN KERB
MN 16 DP 414077		Flush in kerb
IT 9 DP 534146	Destroyed	now gone
IS III DP 30754	Searched For and Not Found	
IT II DP 34677	Searched For and Not Found	
IT VI DP 11956	Searched For and Not Found	
IT VI DP 30754	Searched For and Not Found	
PEG (13) DP 30754	Searched For and Not Found	



# Mark and Vector

Survey Number DP 534146  
Meridional Circuit Mount Pleasant 2000

Mark Name	Mark Condition	Description
PEG (9) DP 30754	Searched For and Not Found	

\*\*\* End of Report \*\*\*



Our Ref: 13065

DP 534146

### MEMORANDUM OF EASEMENTS

Purpose	Shown	Servient Tenement (Burdened Land)	Dominant Tenement (Benefitted Land)
Rights to Drain Water and Sewage	F	Lot 5 DP 30754 – RT CB13K/702	Lot 1
	D, E	Lot 2	Lot 1

### SCHEDULE OF EXISTING EASEMENTS

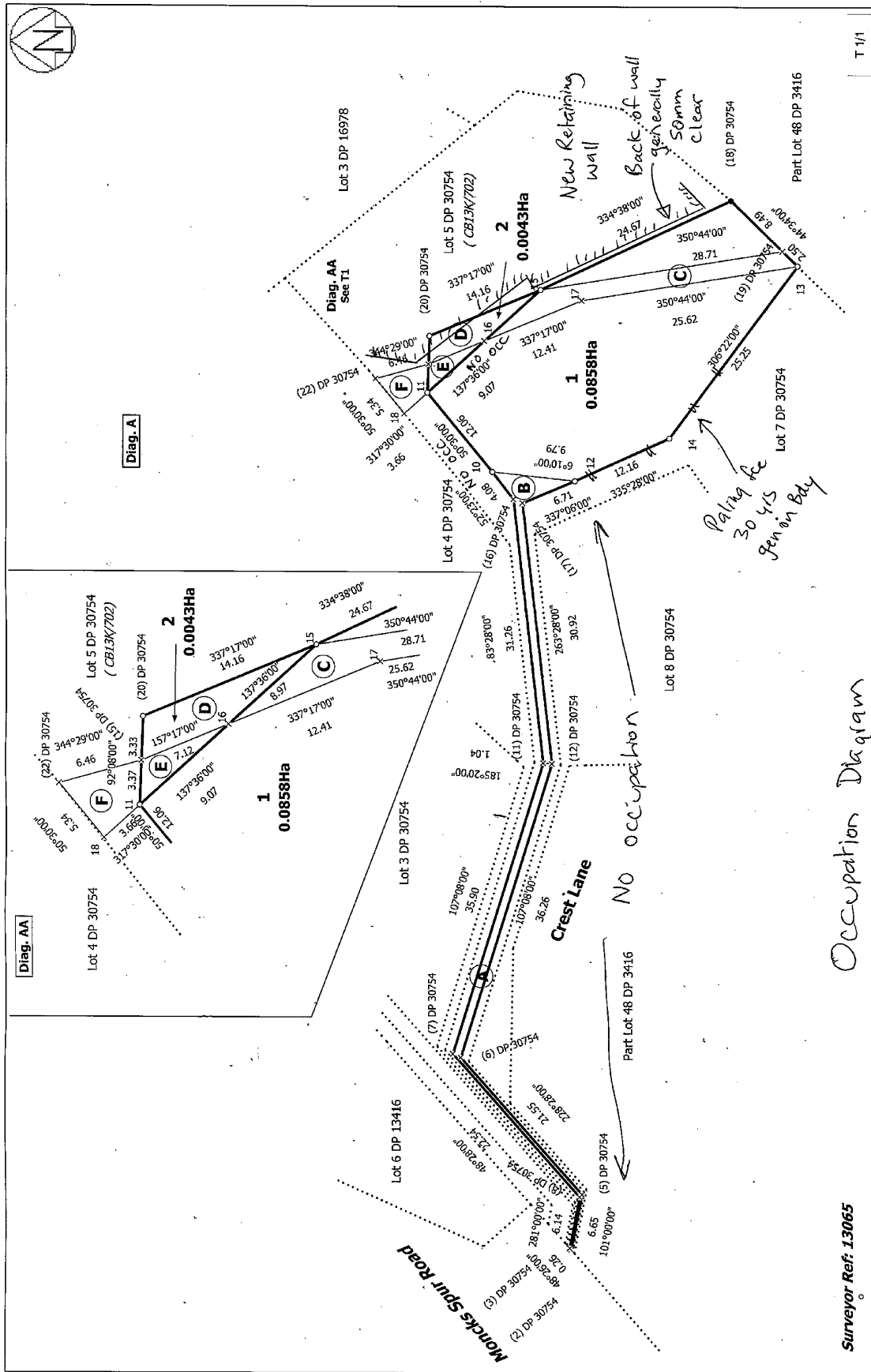
Purpose	Shown	Servient Tenement (Burdened Land)	Document
Right of Way and Right to Drain Water and to Convey Water, Electric Power and Telephonic Communications.	A, B	Lot 1	E C 961037A
Right to Drain Sewage.	C	Lot 1	E C 961037A
	D	Lot 2	E C 961037A

### AMALGAMATION CONDITION (Pursuant to s241 Resource Management Act 1991)

That Lot 2 hereon be transferred to the owners of Lot 5 DP 30754 (RT CB13K/702) and that one record of title be issued to include both parcels.

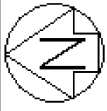
CSN Request 1819845





<p>Surveyor Ref: 13065</p>	<p>Land District: Canterbury</p>	<p>Record of Survey LT 534146 DRAFT</p>	<p>Surveyor: Gavin Waller Reed Firm: Clark Fortune McDonald &amp; Associate Date of Survey: 9/02/2023</p>
<p>Digitally Generated Plan Generated on: 09/02/2023 08:13am Page 14 of 14</p>		<p>Lots 1 &amp; 2 Being Subdivision of Lot 6 DP 30754 &amp; Easement over Lot 5 DP 30754</p>	

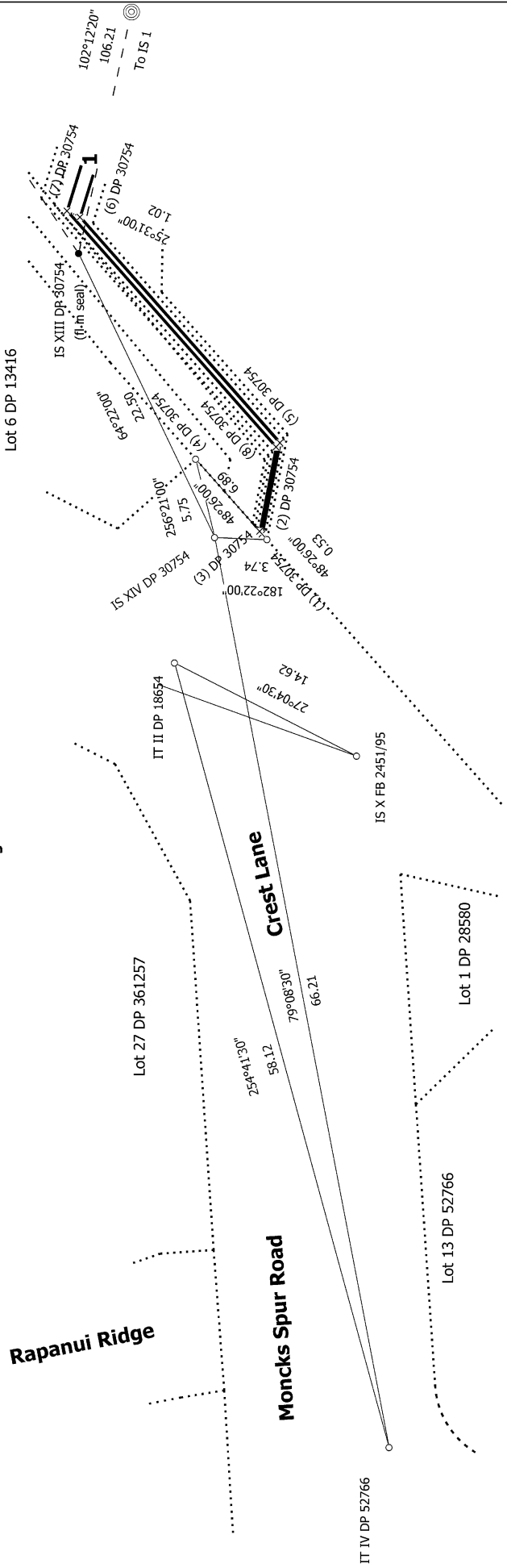




To MA III DP 317885  
 122.19  
 205°34'20"

To TI I DP 300889  
 197.56  
 228°15'30"

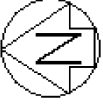
Diag. AA



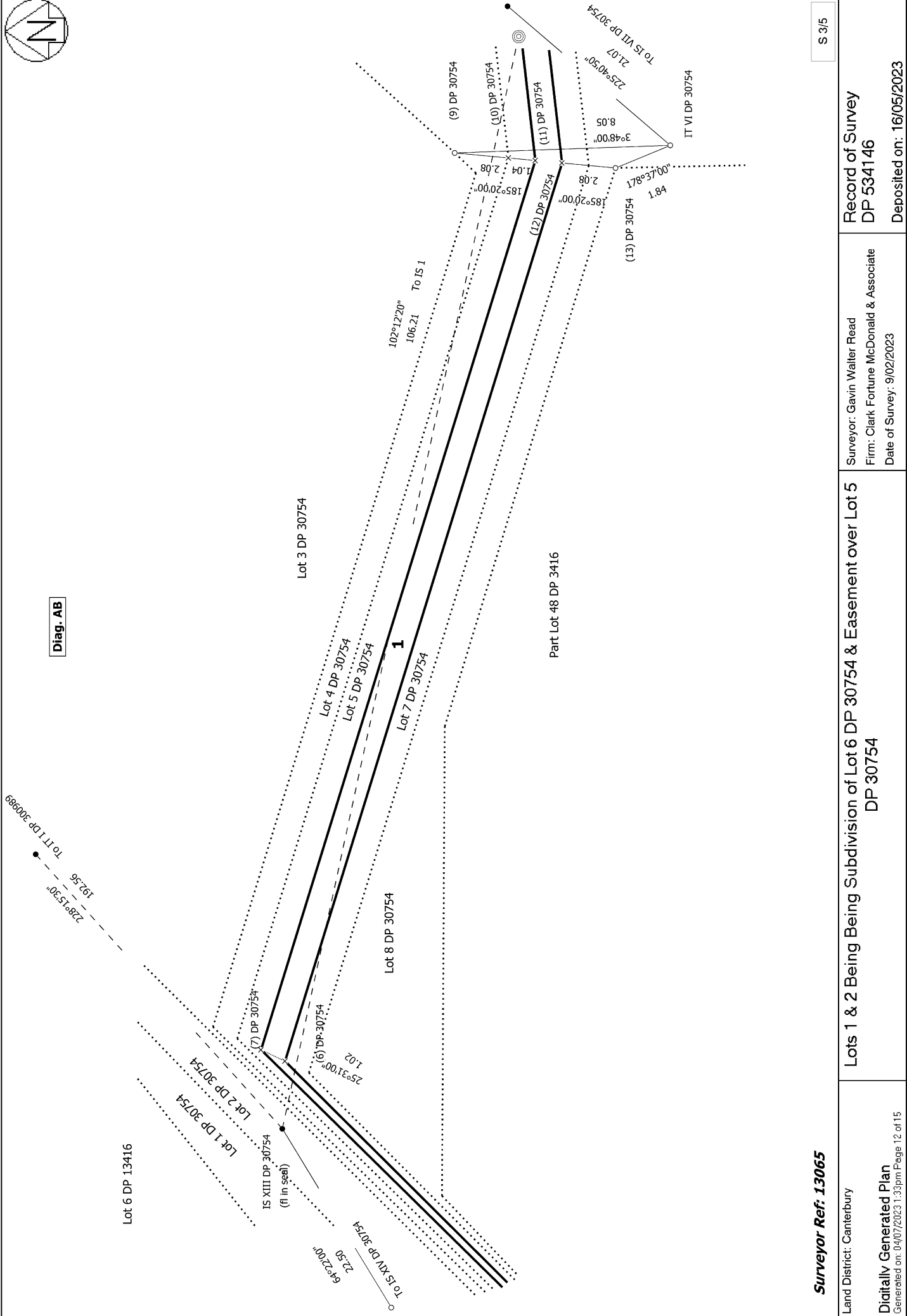
**Surveyor Ref: 13065**

S 2/5

Land District: Canterbury <b>Digitally Generated Plan</b> <small>Generated on: 04/07/2023 1:33pm Page 11 of 15</small>	<b>Lots 1 &amp; 2 Being Being Subdivision of Lot 6 DP 30754 &amp; Easement over Lot 5 DP 30754</b>	Surveyor: Gavin Walter Read Firm: Clark Fortune McDonald & Associate Date of Survey: 9/02/2023	<b>Record of Survey DP 534146</b> Deposited on: 16/05/2023
--	--	--	---



Diag. AB



Surveyor Ref: 13065

Land District: Canterbury

Digitally Generated Plan

Generated on: 04/07/2023 1:33pm Page 12 of 15

Lots 1 & 2 Being Subdivision of Lot 6 DP 30754 & Easement over Lot 5 DP 30754

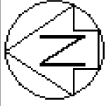
Surveyor: Gavin Walter Read  
Firm: Clark Fortune McDonald & Associate  
Date of Survey: 9/02/2023

Record of Survey  
DP 534146

Deposited on: 16/05/2023

S 3/5





Diag. AD

To IS 12 DP 361257

266°33'00"  
102.37

Moncks Spur Road

IT I DP 300989  
(FL in seal)

26.97

185°51'00"

Lot 1 DP 24312

Lot 1 DP 34677

Lot 1 DP 39448

Lot 2 DP 39448

Lot 3 DP 16978

Part Lot 48 DP 3416

IT I DP 39448

IT II DP 34677

IT IV DP 11956

V DP 11956

To IT VI DP 11956

To (18) DP 30754

To (23) DP 30754

199°22'40"

196.79

215°31'20"

157.47

To IS VII DP 30754

To IS VIII DP 30754

192.56

228°45'30"

To IS XIII DP 30754

31°18'20"

77.48

31°18'20"

194°03'10"

164.79

187°38'00"

54.22

185°51'00"

310°47'55"

779.74

To MN 16 DP 414077

Surveyor Ref: 13065

Land District: Canterbury

Digitally Generated Plan

Generated on: 04/07/2023 1:33pm Page 14 of 15

Lots 1 & 2 Being Subdivision of Lot 6 DP 30754 & Easement over Lot 5 DP 30754

Surveyor: Gavin Walter Read  
Firm: Clark Fortune McDonald & Associate  
Date of Survey: 9/02/2023

Record of Survey  
DP 534146

Deposited on: 16/05/2023

S 5/5

