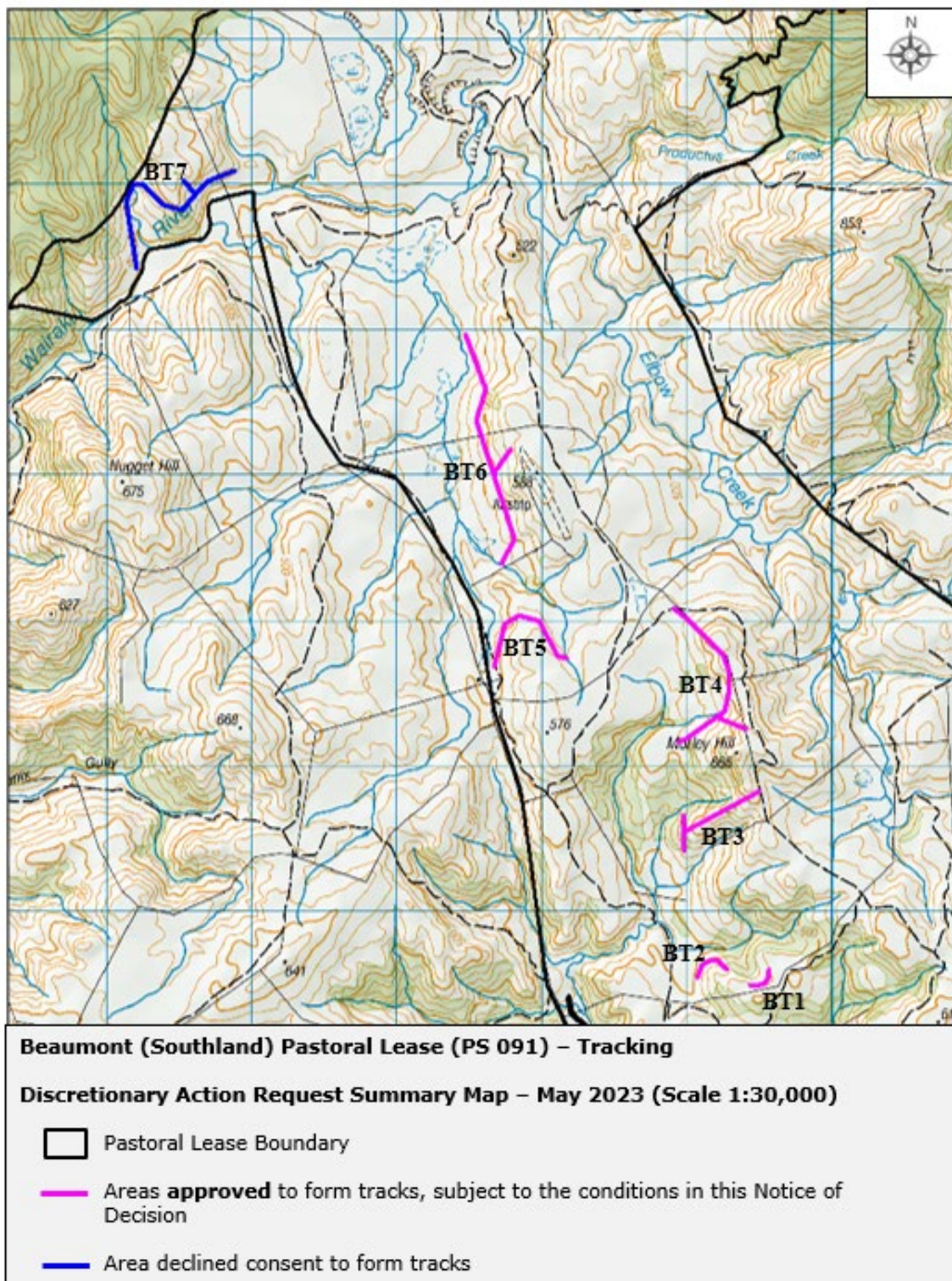


1. Topographical map showing the areas approved and declined to form tracks on Beaumont (Southland) Station.



2. Google Earth images showing the areas approved and declined to form tracks¹

Tracks BT1 and BT2




¹ Please note images are tilted.

Track BT3

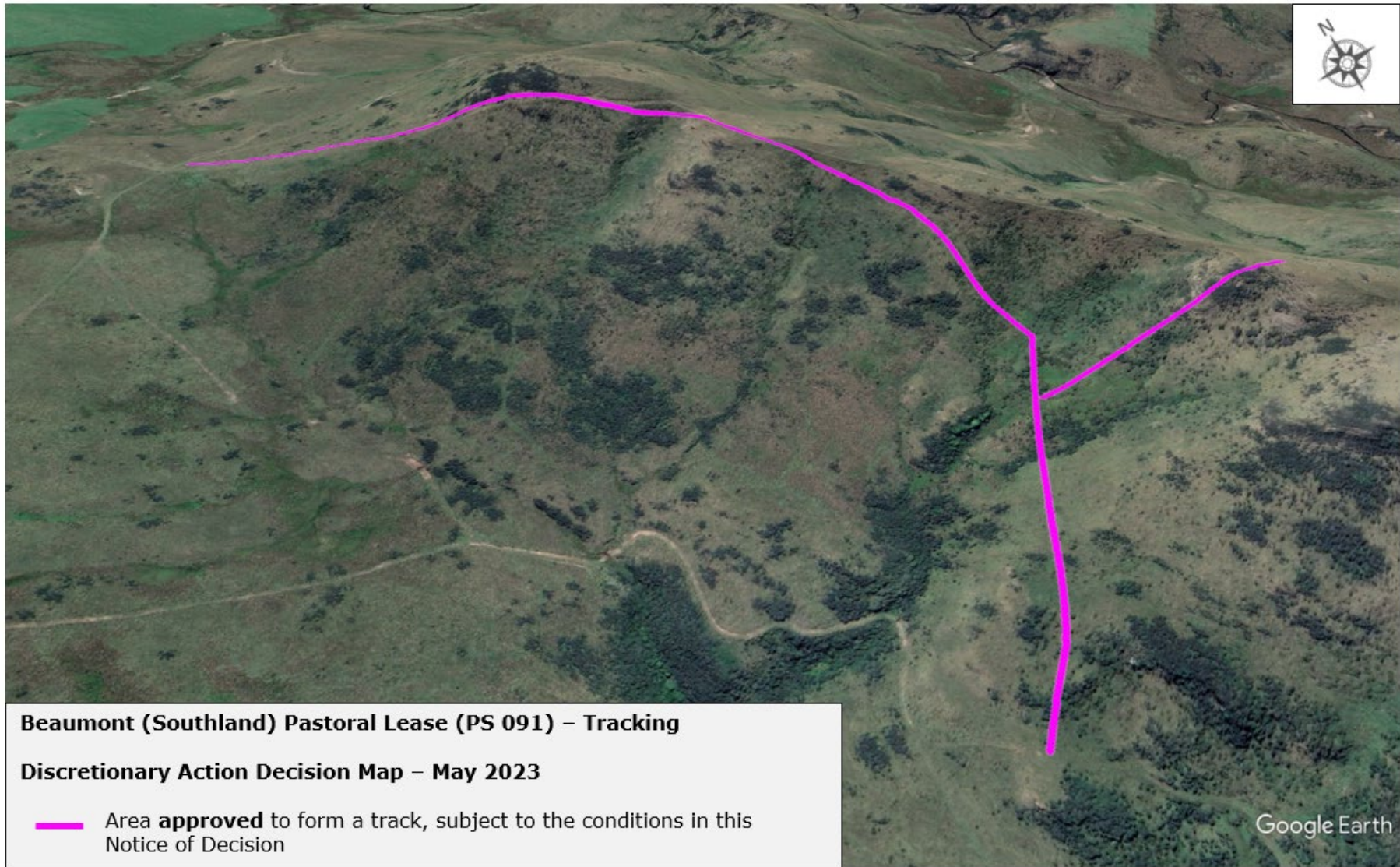


Beaumont (Southland) Pastoral Lease (PS 091) – Tracking


Discretionary Action Decision Map – May 2023

 Area **approved** to form a track, subject to the conditions in this Notice of Decision

Track BT4

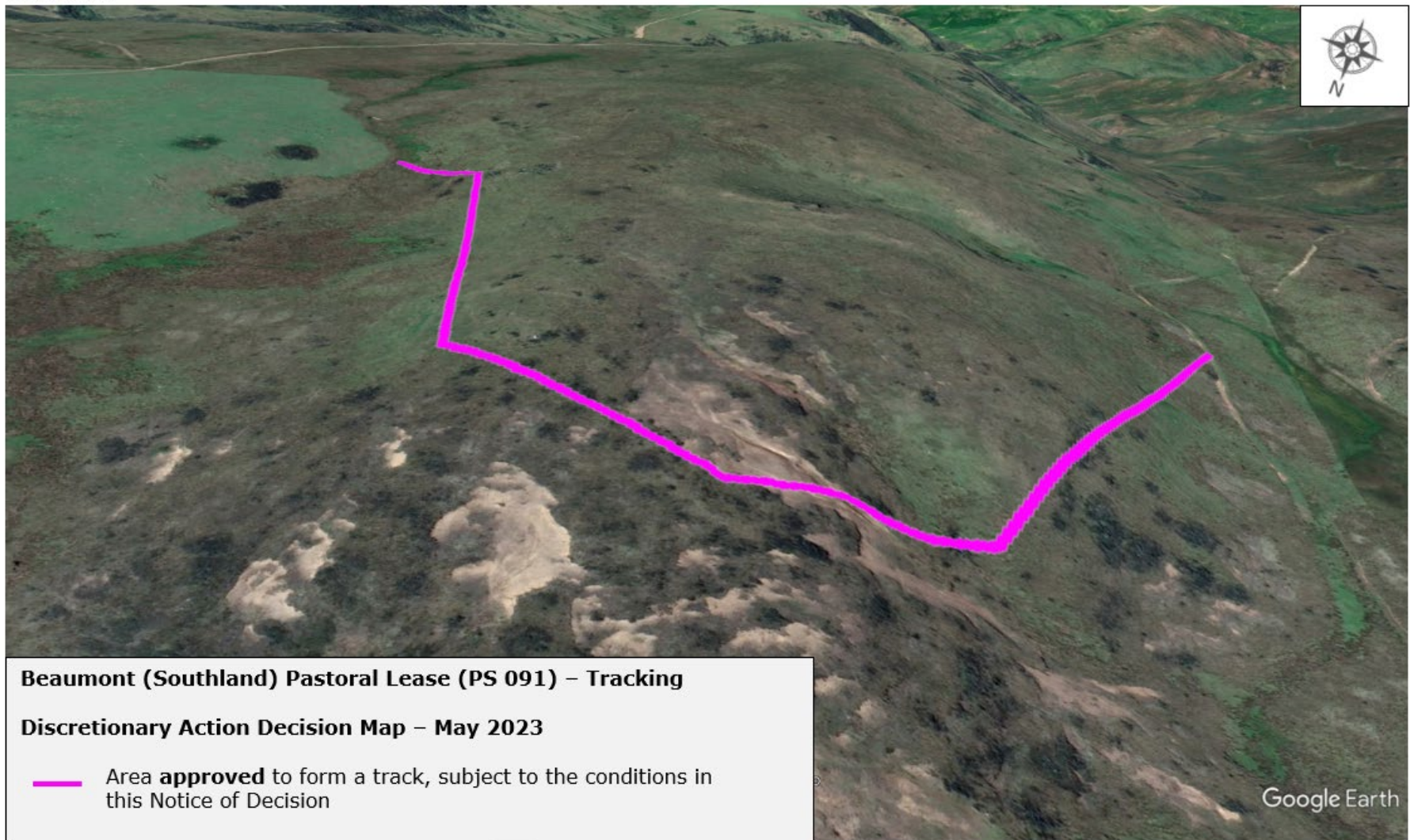


Beaumont (Southland) Pastoral Lease (PS 091) – Tracking
Discretionary Action Decision Map – May 2023

 Area **approved** to form a track, subject to the conditions in this Notice of Decision

Google Earth

Track BT5



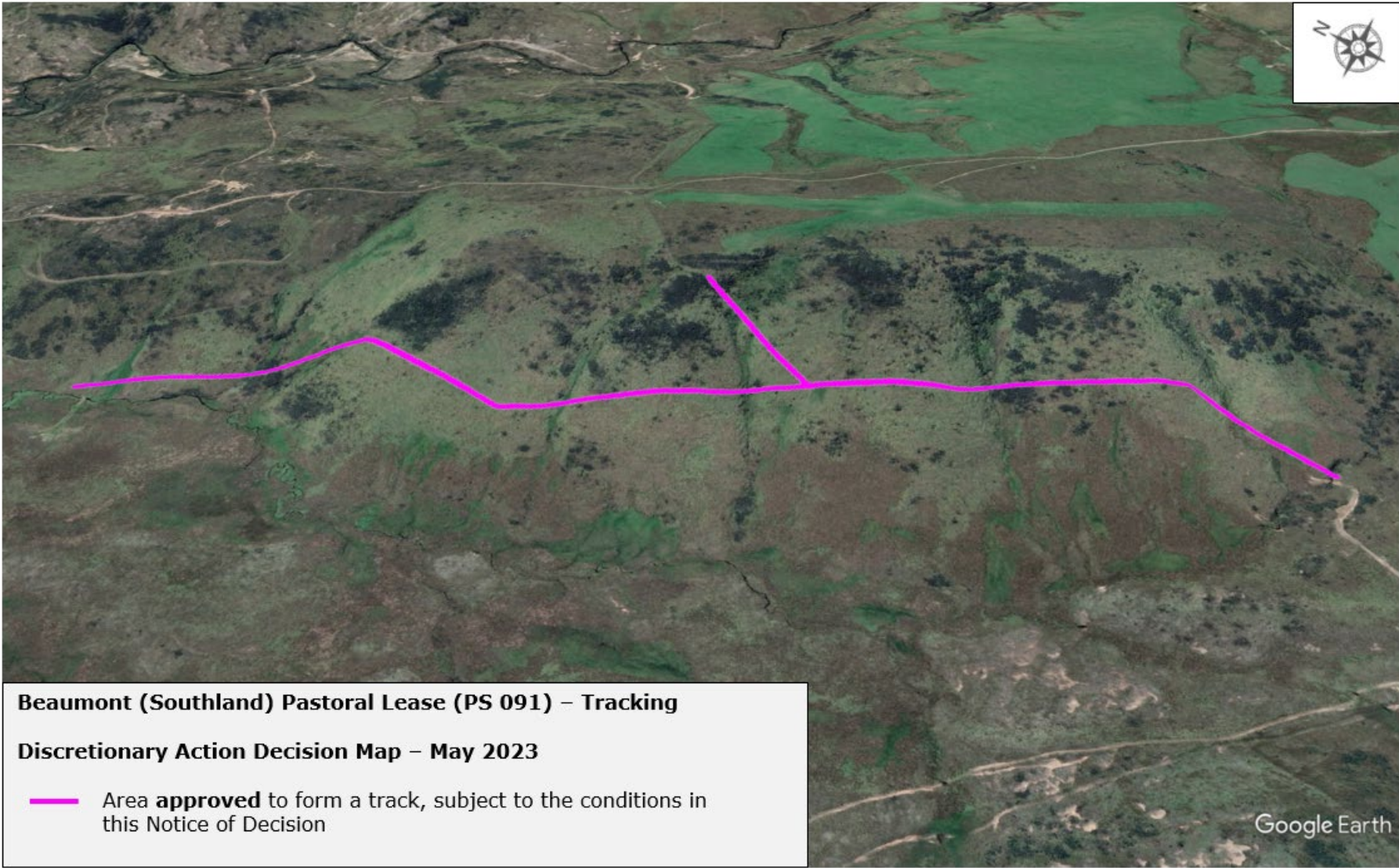
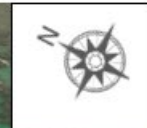
Beaumont (Southland) Pastoral Lease (PS 091) – Tracking

Discretionary Action Decision Map – May 2023

- Area **approved** to form a track, subject to the conditions in this Notice of Decision


Google Earth

Track BT6



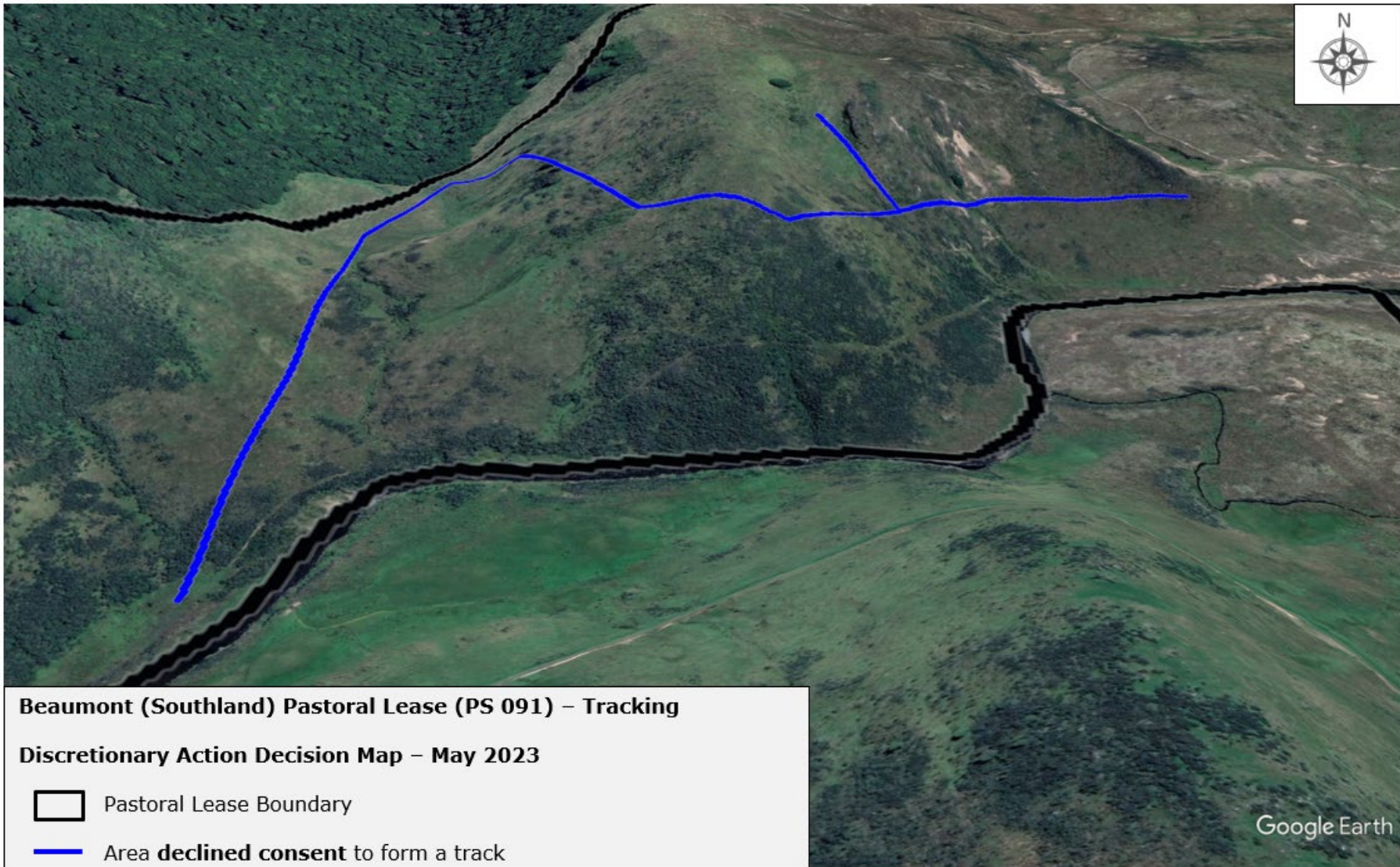
Beaumont (Southland) Pastoral Lease (PS 091) – Tracking

Discretionary Action Decision Map – May 2023

 Area **approved** to form a track, subject to the conditions in this Notice of Decision



Google Earth

Track BT7



Beaumont (Southland) Pastoral Lease (PS 091) - Tracking

Discretionary Action Decision Map - May 2023

-  Pastoral Lease Boundary
-  Area **declined consent** to form a track

Google Earth