

Crown Pastoral Land Tenure Review

Lease name : THE POPLARS

Lease number : PC 015

Plan attaching to the Conservation Resources Report - LENZ Threat Map

The following plan forms page 8 of the Conservation Resources Report provided by the Department of Conservation.

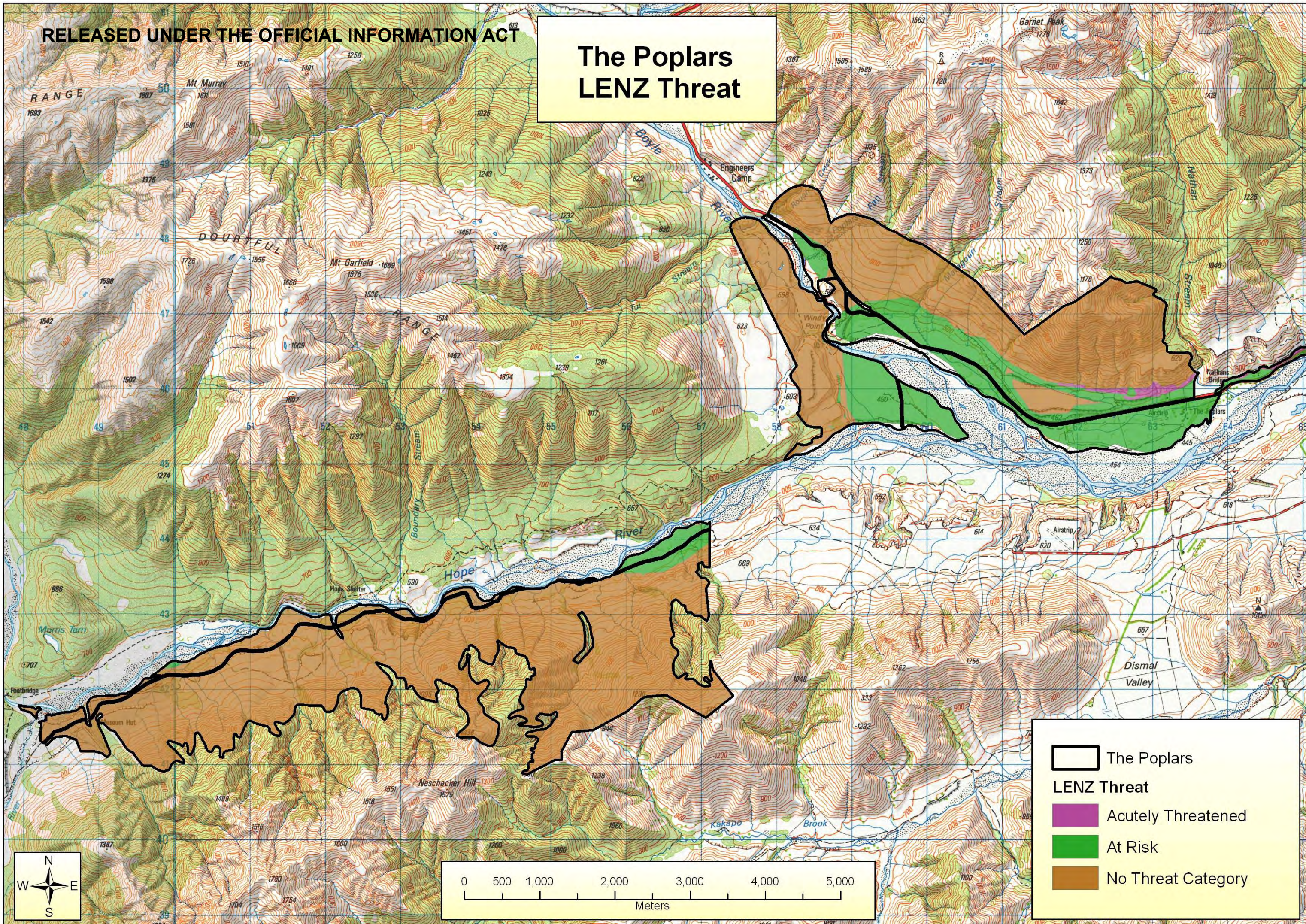
It is released under the Official information Act 1982.

April

06

RELEASED UNDER THE OFFICIAL INFORMATION ACT

The Poplars LENZ Threat



-  The Poplars
- LENZ Threat**
-  Acutely Threatened
-  At Risk
-  No Threat Category

