

Crown Pastoral Land Tenure Review

Lease name : SOLDIER SYNDICATE

Lease number : Oo 091

Conservation Resources Report - Part 3

As part of the process of Tenure Review, advice on significant inherent values within the pastoral lease is provided by Department of Conservation officials in the form of a Conservation Resources Report. This report is the result of outdoor survey and inspection. It is a key piece of information for the development of a preliminary consultation document.

Note: Plans which form part of the Conservation Resources Report are published separately.

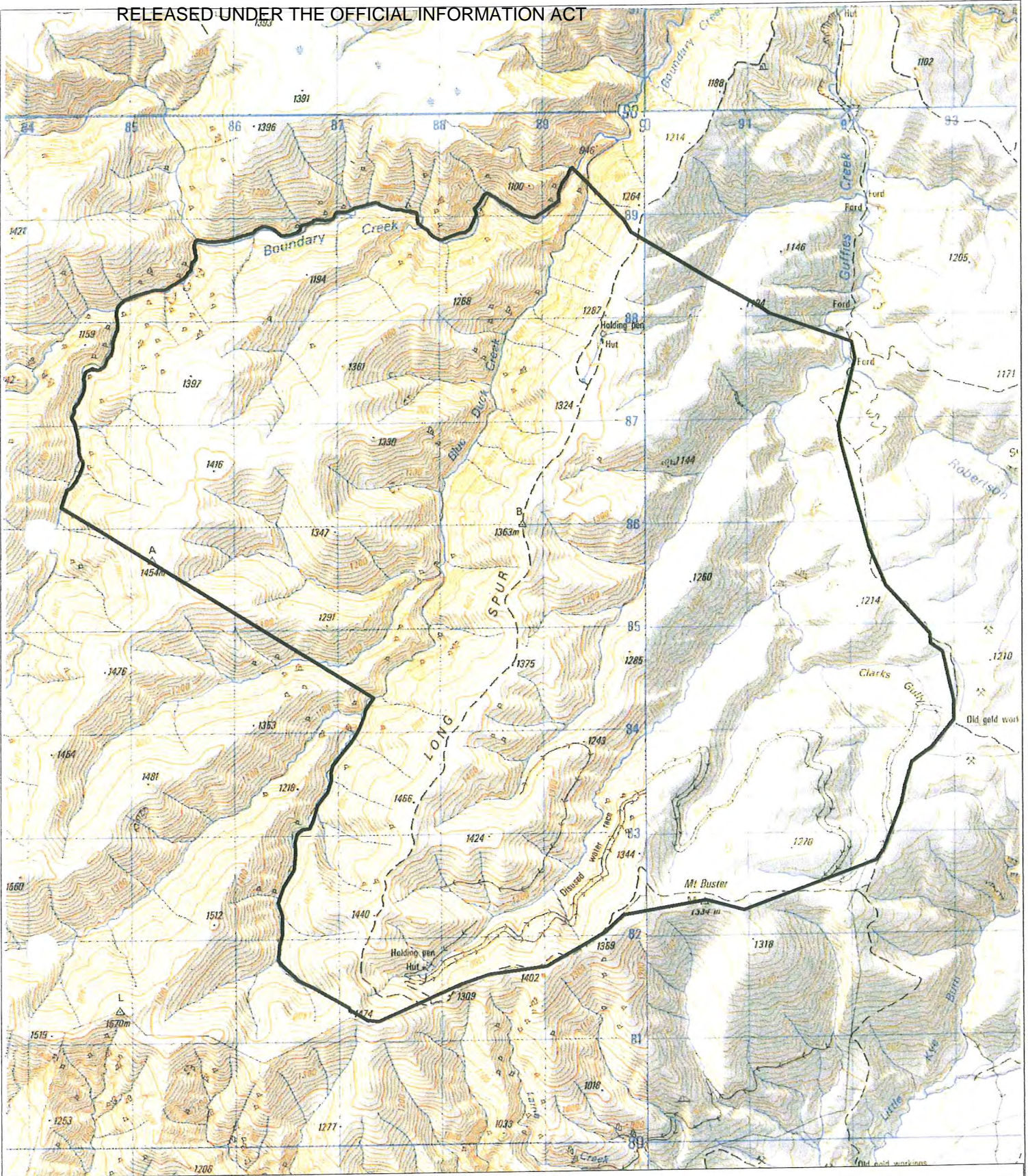
These documents are all released under the Official information Act 1982.

July

02

4.2 Illustrative Maps:

**Topo/Cadastral
Landscape Units
Areas of Significant Inherent Values**

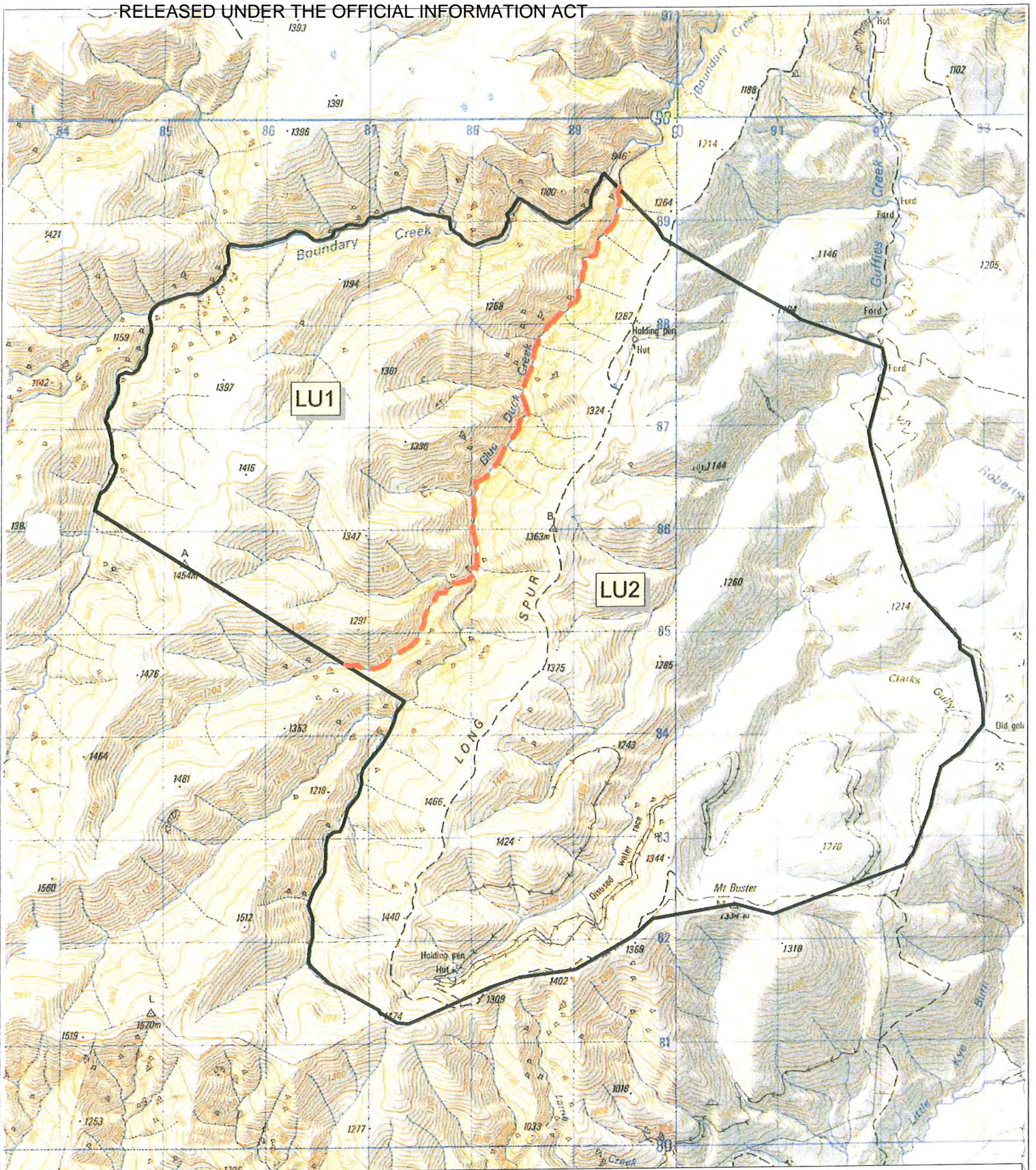


Soliders Syndicate
Topo Cadastral

Scale 1:50,000

1 0 1 Kilometers





Soliders Syndicate
Landscape Units



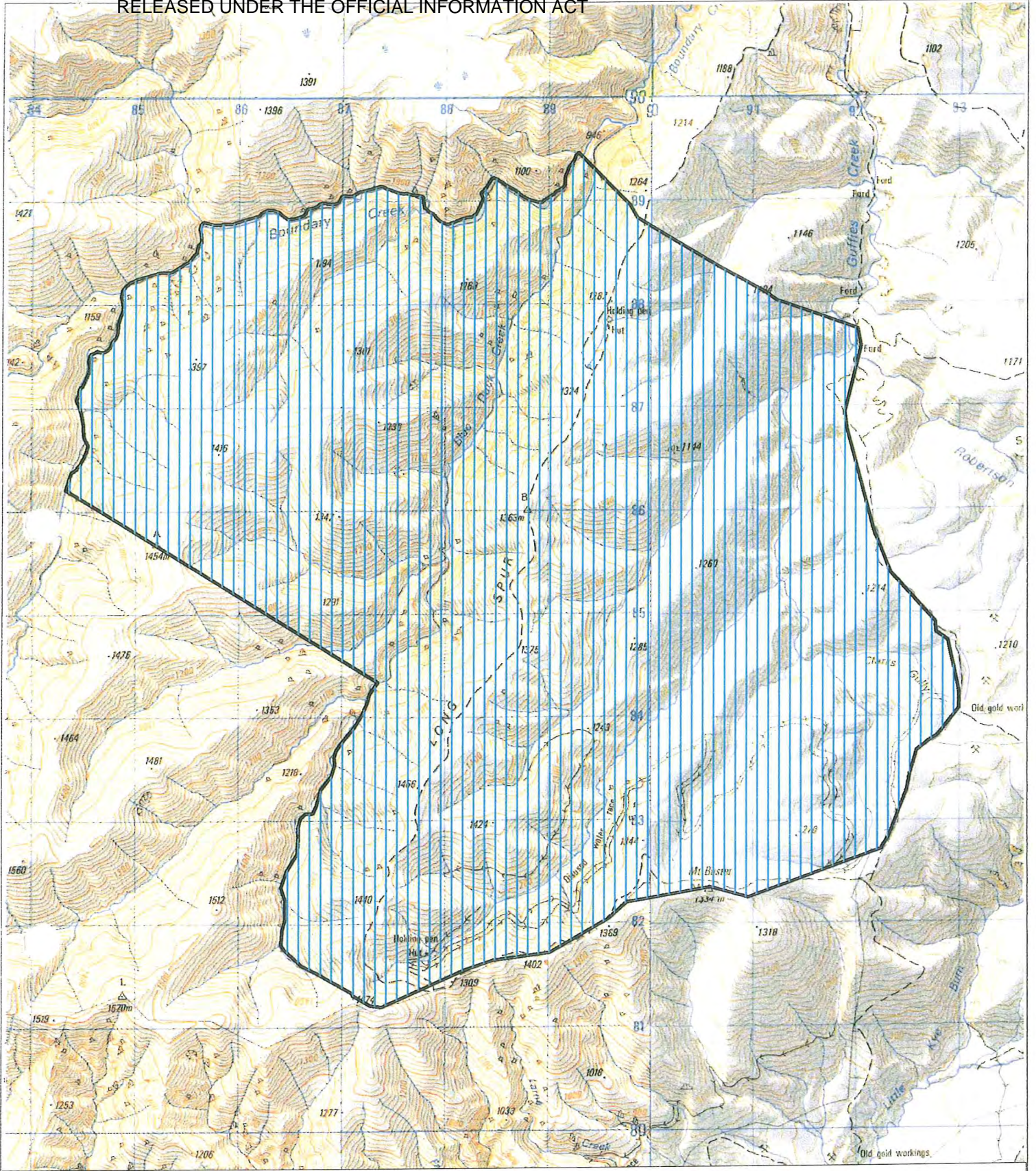
Landscape Units



Scale 1:50,000

1 0 1 Kilometers





Soliders Syndicate

Scale 1:50,000



Areas of Significant Natural/Landscape/Historic & Recreational Value



1 0 1 Kilometers

