

## **Crown Pastoral Land Tenure Review**

**Lease name : Simons Hill**

**Lease number : PT 046**

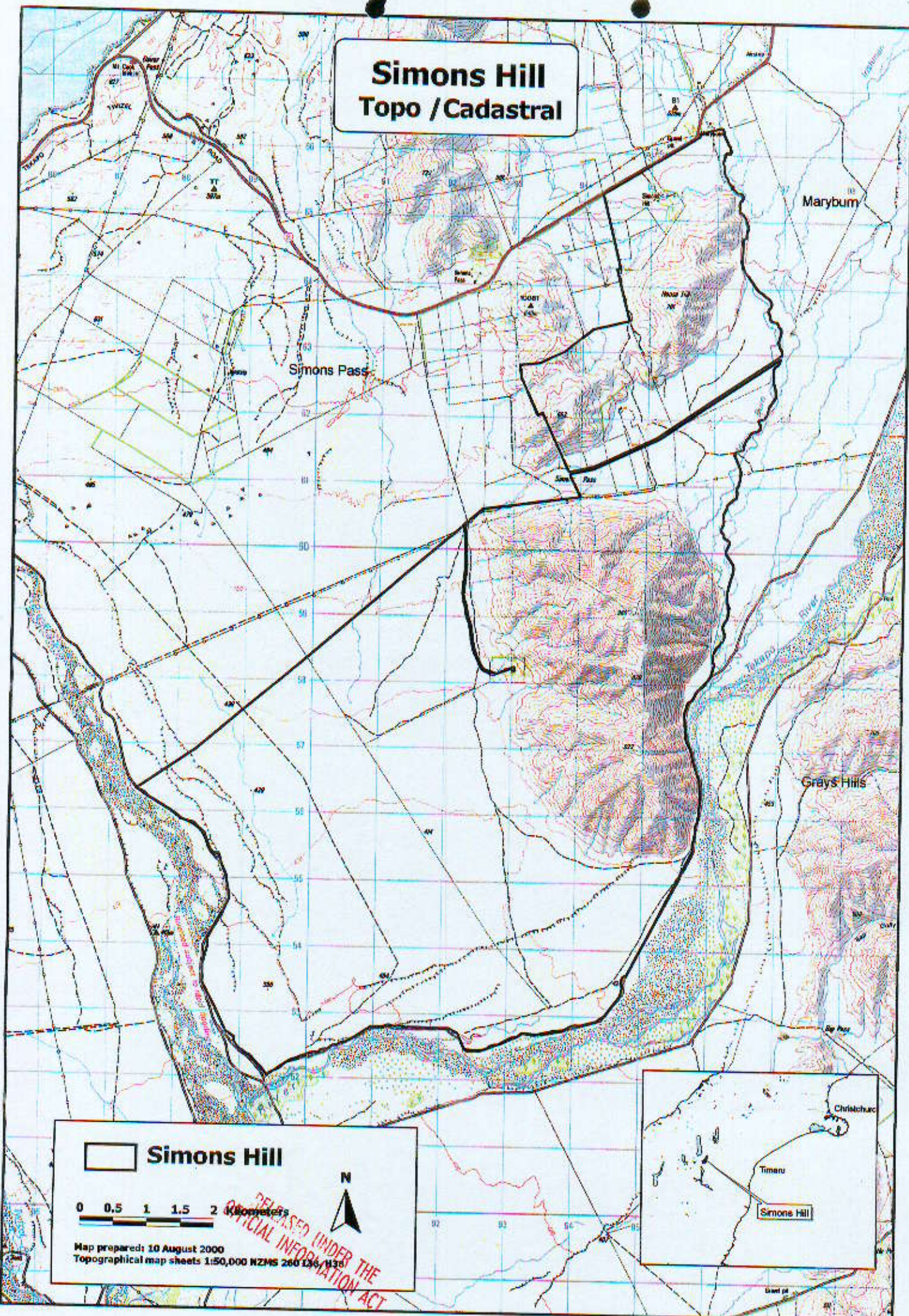
### **Plans attaching to the conservation resources report**

These plans attach to and support the conservation resources report provided by the Department of Conservation.

They are released under the Official information Act 1982.

**Copied October 2002**

# Simons Hill Topo / Cadastral



 **Simons Hill**

0 0.5 1 1.5 2 Kilometers



Map prepared: 10 August 2000  
Topographical map sheets 1:50,000 NZMS 260 136/138

RELEASED UNDER THE  
OFFICIAL INFORMATION ACT



# Simons Hill Values



- Simons Hill
- Landscape Values
- Ecological Values
- R Area of Recreation Interest

0 1 3 Kilometres

Map prepared: 22 May 2001  
Topographical map sheet 1:50,000 NZMS 260 H38, I38



# Simons Hill Soil Class

## Soil Class

- 10a Arrow steepland soils
- 4bH Otematata hill soils
- 5a Waitaki steepland soils
- Bd4a Bendrose bouldery soils on younger floodplains
- Bd4a+Db2a Bendrose bouldery soils+Dobson poorly drained shallow soils on younger floodplains
- Db2a+Bca Dobson + Buscot soils on younger floodplains
- Db2a+Bd3a Dobson + Bendrose stony soils on younger floodplains
- Db2a+Swa Dobson poorly drained soils on younger floodplains+ Sawdon soils on well drained older flood plains
- Dg2c Dalgety shallow soils on well drained old terraces and fans
- Dg2c+Gk3c Dalgety shallow soils on well drained old terraces and fans+Glenrock stony soils on young terraces and fans
- Gk3a+Smla Glenrock stony soils on young terraces and fans+ Simons moderately deep well drained soils on old terraces and fans
- Gn0c Glenrock deep soils on young terraces and fans
- Gn0c+Dg3c Glenrock soils on young terraces and fans + Dalgety stony soils on well drained old terraces and fans
- La3a Larbreck stony soils on excessively drained young terraces
- La3a+La2a Larbreck stony soils + Larbreck shallow soils on excessively drained young terraces
- La4a Larbreck bouldery soils on excessively drained young terraces
- Mk2a+Mk3a Mackenzie shallow soils + stony soils on somewhat excessively drained intermediate terraces and fans
- Mk3a Mackenzie stony soils on somewhat excessively drained intermediate terraces and fans
- Mk3a+Mk2a Mackenzie stony soils + shallow soils on somewhat excessively drained intermediate terraces and fans
- Mk4a Mackenzie bouldery soils on somewhat excessively drained intermediate terraces and fans
- Smla Simons deep soils on well drained old terraces and fans
- Smla+Gk2a Simons deep soils on well drained old terraces and fans +Glenrock shallow soils on young terraces and fans
- Smlb Simons deep soils on very gently sloping well drained old fans
- Swa+Bca+Db2a Sawdon well drained soils and Buscot imperfectly drained soils on older floodplains+ Dobson poorly drained soils on younger flood plains

