

Crown Pastoral Land Tenure Review

Lease name: RICHMOND

Lease number: PT 087

Public Submissions - Part 6

These submissions were received as a result of the public advertising of the Preliminary Proposal for Tenure Review.

January

06

**Photographic supplement to submission by
Royal Forest and Bird Protection Society on
Preliminary Proposal for Richmond, Lake Tekapo.**

October 2005

Land currently proposed for freeholding (FH2) which deserves protection as part of an extended CA3.

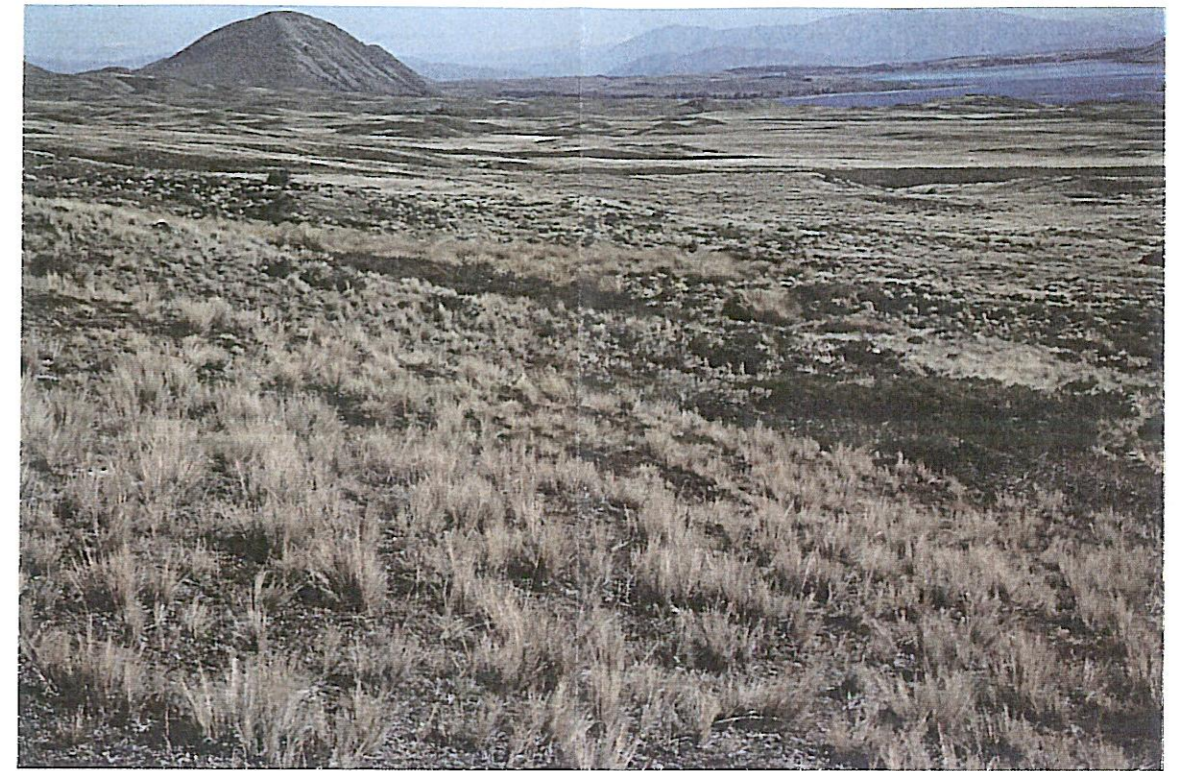
Note: All of the areas which have a reference in brackets to the Botanical Assessment report map area xx were recommended for protection in that report¹.

1. Richmond Range (CA3) with in the foreground, *Chionochloa rigida*, fescue tussock and matagouri, *Carmichaelia*, *Leucopogon* mosaic on upper lateral moraine at c1060 m asl. Snow tussock is in very good condition with healthy and diverse indigenous intertussock species. (Botanical Assessment report map area 2c)
2. Looking south towards Mt Hay. *Chionochloa rigida*, fescue tussock and matagouri.
3. Wetland tributary of Washdyke Stream, 890m asl NZMS 260 I37 163017. (Possibly in Botanical Assessment report map area 2c).
4. Diverse and healthy *Hebe* and matagouri shrublands in unnamed stream gully immediately north of Washdyke Stream c960 m asl. Richmond Range in background.

¹ Anon (undated) Botanical Assessment of Richmond pastoral lease, prepared for Department of Conservation.



1.



2.



3.



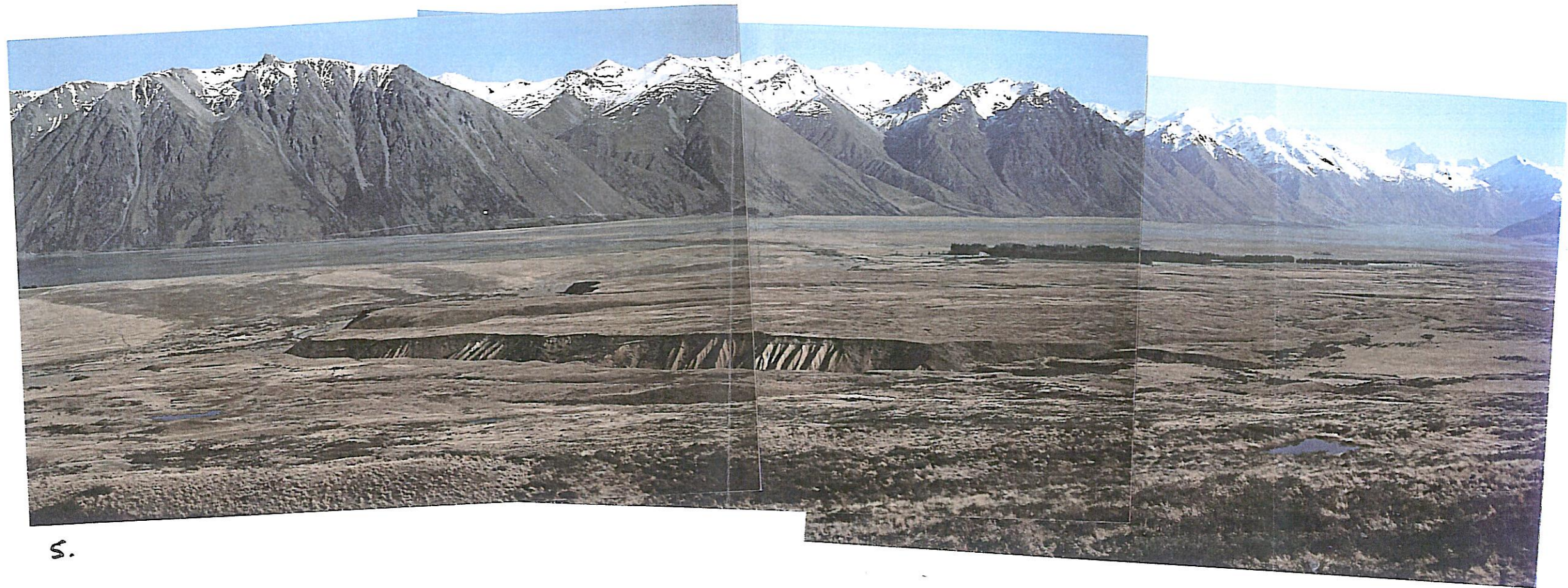
4.

Land currently proposed for freeholding (FH1) which deserves protection as part of an extended CA2 and CA4.

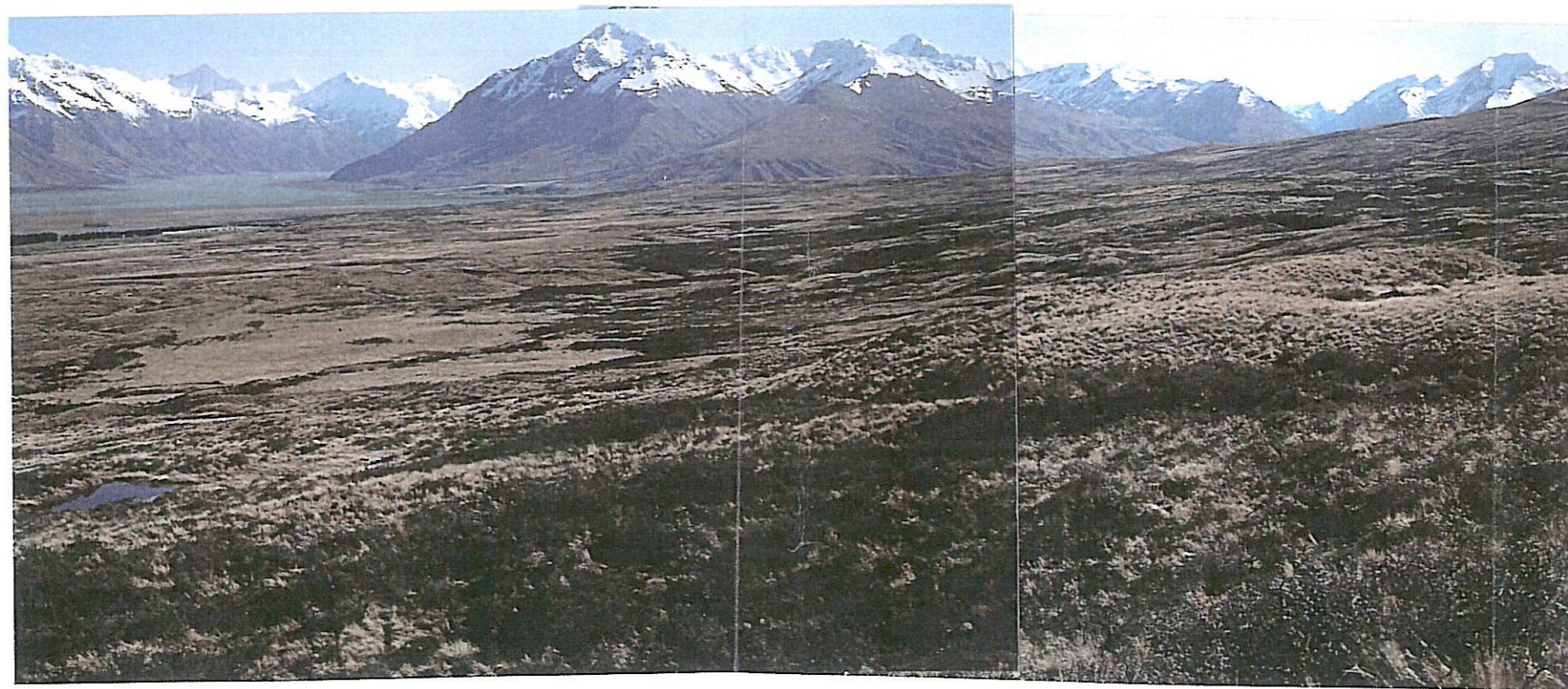
5. Panoramic view of fescue tussock and matagouri shrubland mosaic and incised gully (NZMS 260 series I37 c166078) on the true right of the Coal River looking towards Mt Gerald boundary, Godley Valley and Hall Range with snow fenceline visible to the north of small tarn. (Botanical Assessment report map area 3).

5A. Hummocky topography of upper lateral moraine with dense fescue tussock and matagouri shrublands looking towards Mt Gerald boundary with snow fenceline visible to the north of small tarn. (Eastern extension of panoramic view above. Note same small tarn in bottom left of photo. Botanical Assessment report map area 3)

This is an integrated landscape with a continuous and healthy indigenous vegetation cover which should be managed in a complementary manner. The panoramic views of the Hall Range and Godley Valley, its high natural character and easy access contribute to its recreational values and potential. The extensive shrublands mean grazing value is limited with farm development following freeholding e.g. through OSTD likely to result in substantial indigenous vegetation clearance and biodiversity loss.



S.



SA