

## **Crown Pastoral Land Tenure Review**

**Lease name: MESOPOTAMIA**

**Lease number: PT 057**

### **Public Submissions - Part 8**

These submissions were received as a result of the public advertising of the Preliminary Proposal for Tenure Review.

**February 06**



**Photo 5** Looking into Sandy's Basin from farm track, eastern faces Black Mountain Range. Fencing here is likely and scar the landscape and farm development will degrade shrublands and tussock. Extend CA2 to include all of CC3.



**Photo 6** Tongues of Butler Downs mountain beech forest proposed for freeholding. Looking east along deer fence. Extend CA3 to include all of the forest and a buffer area for regeneration.



Photo 7 Red tussock and *Schoenus* wetland between eastern edge of Bulter Downs forest and farm track from Scour Stream to High Terrace. Extend CA3 to include wetland. Photo is looking north.



Photo 8 Wetland at southern edge of Bulter Downs beech forest. Proposed repaired Q-R fenceline cuts across wetland. Extend CA3 and fence to include wetland as conservation land and protect from stock.

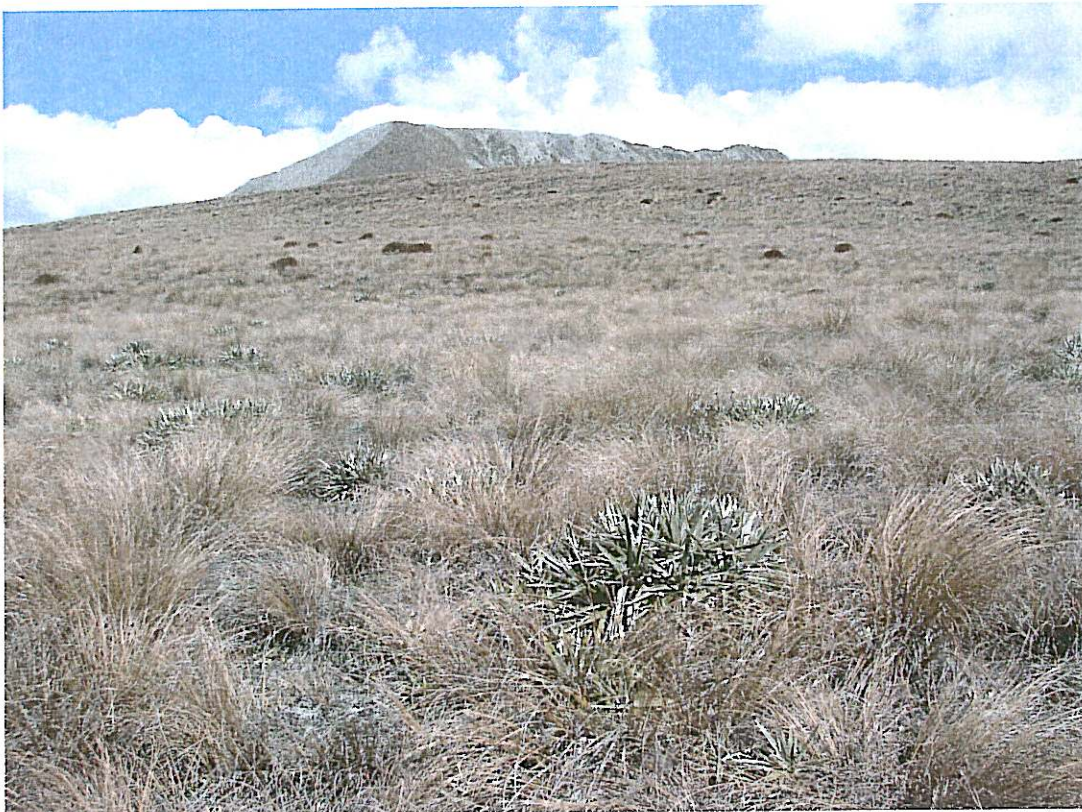


Photo 9 Dense *Chionochloa rigida* tussockland with *Celmisia* and *Dracophyllum* at south-eastern end of High Terrace. High landscape and ecological values merit extending CA3 to include.



Photo 10 Wetland at base of eastern slopes of High Terrace at J36 369205. The moraine hollows contain a series of wetlands such as this which are not described in Conservation Resources Report. The area has SIVs deserving protection as part of CA3.