

Crown Pastoral Land Tenure Review

Lease name : LONG GULLY

Lease number : PO 055

Conservation Resources Report - Part 5

As part of the process of Tenure Review, advice on significant inherent values within the pastoral lease is provided by Department of Conservation officials in the form of a Conservation Resources Report. This report is the result of outdoor survey and inspection. It is a key piece of information for the development of a preliminary consultation document.

Note: Plans which form part of the Conservation Resources Report are published separately.

These documents are all released under the Official information Act 1982.

December 05

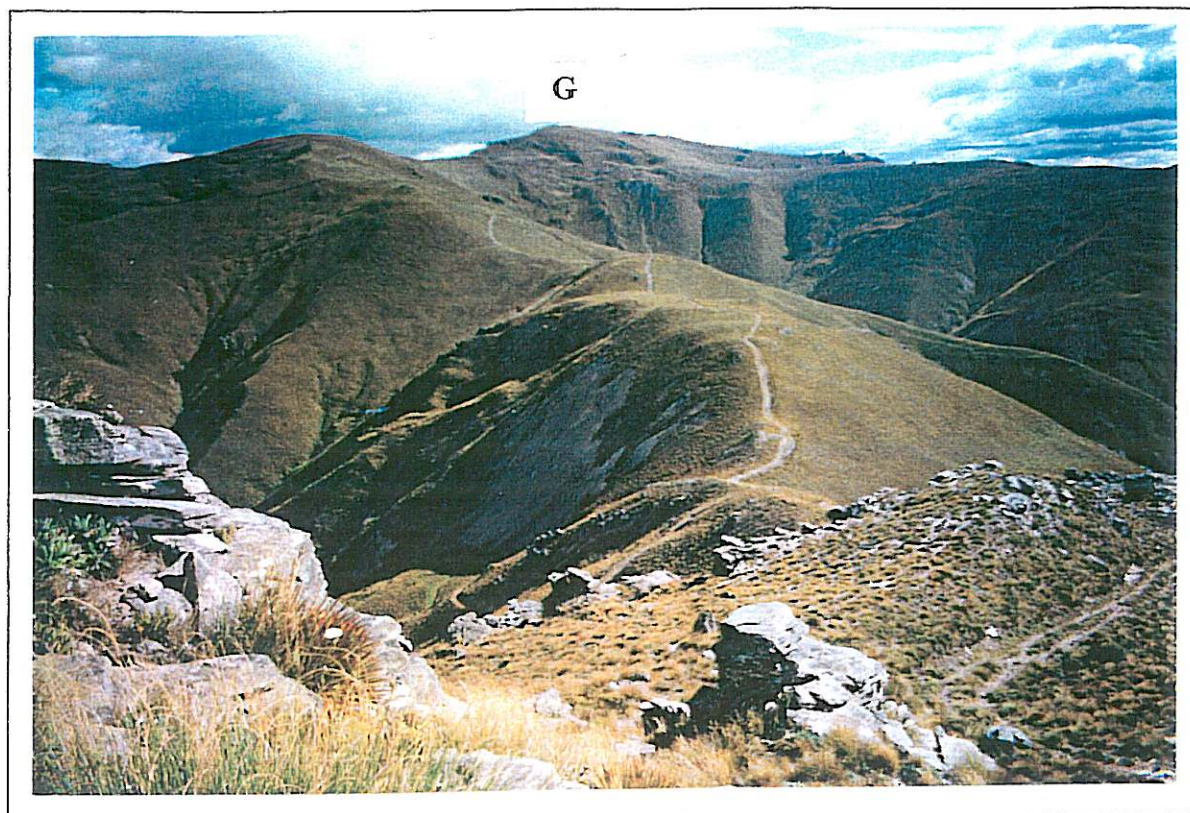


Fig. 7 Public access to the ridge system which extends from Breast Hill and Grandview in the north to Lindis Peak in the east is the main issue in this tenure review. Tracks along the ridges, such as this one leading over Bluenose to Grandview (G) and beyond, could become valuable recreational resources if adequate access was secured through tenure review. Access from Tarras via Long Gully and/or Deep Creek is needed.



Fig. 8 The highest part of Deep Creek and Long Gully is LUC Class VIIe, of very limited suitability for pastoral farming. Unless essential nutrients (removed in animal products) are replenished, the land cannot be managed in a way that is ecologically sustainable in the long term, and should not become freehold. The alternative is that it is returned to full Crown ownership and control, and is managed for conservation.

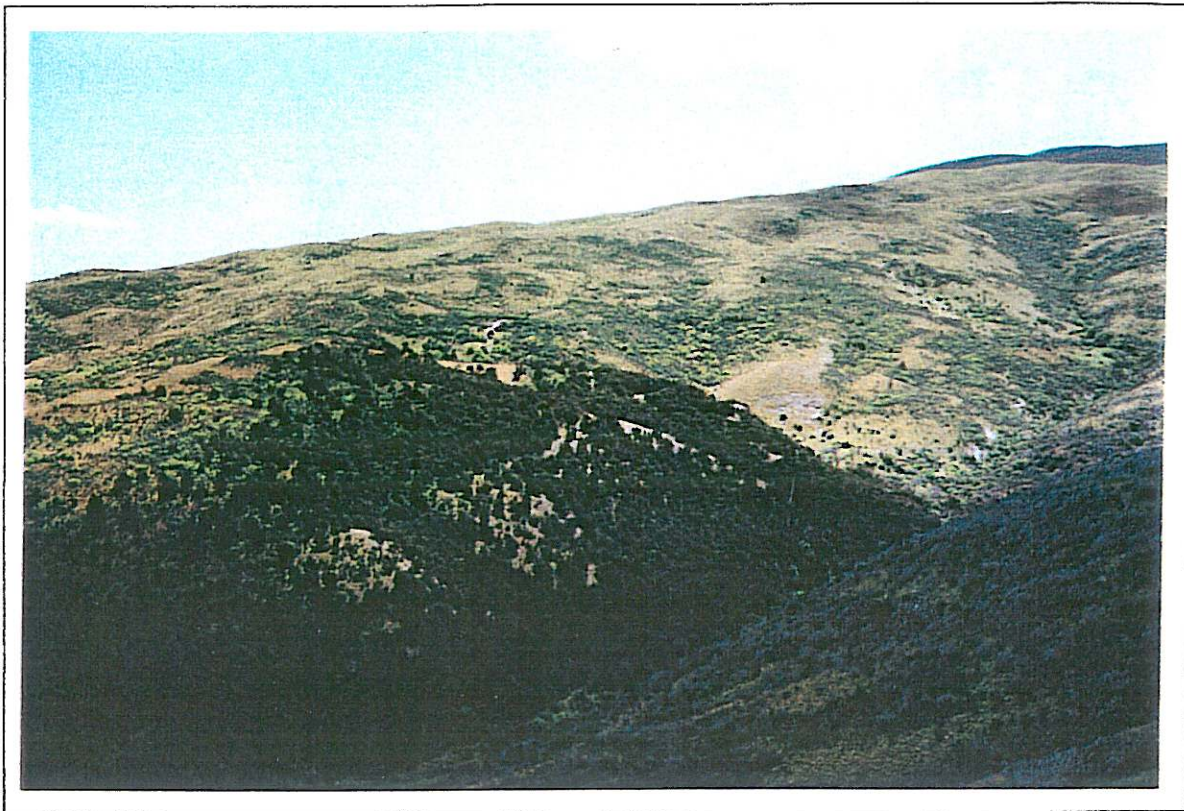


Fig. 9 Within the Deep Creek catchment, on the front faces of the property, are some small but significant patches of native Manuka/Kanuka shrubland which are remnants of shrublands which were formerly much more extensive. These are situated within an area that has been classified LUC Class VI which should be capable of sustainable pastoral use. The shrublands could be considered for protection under a conservation



Fig. 10 The ridge track extends eastwards over the neighbouring property to Lindis Peak (in shadow), which is located on Nine Mile Station. The Preliminary Proposal for the tenure review of Nine Mile includes public access to Lindis Peak from the Lindis Pass highway. Progress towards completion of the link from the Grandview part of the ridge system to Lindis Peak would be a very valuable outcome of the current tenure reviews.



Fig. 11 The views from the Glenfoyle - Grandview - Breast Hill part of the ridge system are expansive and with progress along the ridge, the perspectives are continuously changing. In this view across Lake Hawea, the mountains of Mt Aspiring National Park and the main Divide can clearly be seen in the distance.



Fig. 12 One route heads down from a saddle just below Trig O, sidles along a prominent spur and drops off into Long Gully below the translators which are located near the patch of shadow on the spur in the middle distance. This would provide good foot and mountain bike access from Tarras, and would serve as an emergency exit from the ridge system in bad weather.