

Crown Pastoral Land Tenure Review

Lease name : LONG GULLY

Lease number : PO 055

Conservation Resources Report - Part 3

As part of the process of Tenure Review, advice on significant inherent values within the pastoral lease is provided by Department of Conservation officials in the form of a Conservation Resources Report. This report is the result of outdoor survey and inspection. It is a key piece of information for the development of a preliminary consultation document.

Note: Plans which form part of the Conservation Resources Report are published separately.

These documents are all released under the Official information Act 1982.

December 05

APPENDIX THREE Royal New Zealand Forest And Bird Society Incorporated
Written submission

09 APR 2003
RECEIVED



FOREST & BIRD

Royal Forest and Bird Protection Society of New Zealand Incorporated
Upper Clutha Branch
Po Box 38
Lake Hawea

7 April 2003

Tony Perrett
The Manager Tenure Review
Department of Conservation
77 Stuart Street
PO Box 5244
DUNEDIN

*Debbie Smith -
Please send original to Tim
col copy for our files.*

CONS	
A.M.	
C.R.M.	
B.S.M.	
T.S.M.	
H.R.A.	
H.C.T.R.M.	<i>[Signature]</i>
K.A.M.	
OTHER	

Dear Tony

**NGO's report for Early Warning submission
Long Gully and Deep Creek**

Following is the Upper Clutha branch's Early Warning submission on the Tenure Review of Long Gully and Deep Creek Pastoral Leases.

1 General

- i These two properties are adjoining and run as one unit for managerial purposes.
- ii Situated as they are at the junction of the Clutha and Lindis valleys, Deep Creek and Long Gully are very visible from SH8, the Lindis Road and SH6, the Wanaka Road.
- iii The highest point on the properties is 1230masl. on Deep Creek about 1.5 kilometres north east of Trig O at 1178masl. Trig O is close to the boundary between the two properties.
- iv Approximately half the area of Deep Creek drains to the north into West Coast Gully and in turn into Camp Creek which is a tributary of the Lindis River. (See photo # 3)
- v Long Gully is bounded in the north by Sandypoint, which is already in the tenure review process, and Deep Creek is bounded in the east by Lindis Peak, which is a freehold property.
- vi There is considerable tracking on these properties, Some of it still being constructed. A new track is seen coming out of Long Gully at about the 500masl. contour and descends to the Long Gully homestead on SH8. Then heads back up the hill towards trig 952masl. (See photo # 4)
- vii Both Lindis - RAP A13 Long Gully and Lindis RAP A14 Long Gully Terrace are on Long Gully.

ROYAL FOREST AND
BIRD PROTECTION
SOCIETY OF
NEW ZEALAND INC

CENTRAL OFFICE
172 TARANAKI ST
PO BOX 631
WELLINGTON
PH 04 385 7374
FAX 04 385 7373
E M A I L
OFFICE@WN.FOREST
-BIRD.ORG.NZ

2 Method of Survey and Inspection

A site visit and field inspection of both properties was carried out in January 2003. Further information was obtained from the Survey Report for Protected Natural Area Programme 1994.

3 Conservation Values

- i Landscape is a significant inherent conservation value on both these properties. The lower slopes consist of modified tussock grasslands with some woody endemic vegetation throughout. This merges in to taller tussock (in name, not stature) at about 800 – 900masl. This transition from low to taller tussock is seen as a colour change, and is very visible from the main roads - SH8 & SH6. (See photo # 2). A landscape covenant to protect the remaining tussock from further degradation would be beneficial. We would also like to see that planting of conifers or indeed any plantation species on these slopes become a prohibited activity.
- ii The tussock cover is sparse on the sunny faces of Deep Creek as shown on Photo # 3. As this area is part of the Lindis River catchment thought needs to be given to the restoration of a reasonable level of plant cover to slow runoff and to retain winter moisture in the catchment for slower release in the summer into the Lindis River which invariably runs dry during the summer months.
- iii On Deep Creek in the gully behind the woolshed and before climbing the hill there are small stands of kanuka, which are interspersed with kowhai, carmichaelia, coprosma, matagouri, muehlenbeckia and also sweet brier; which has been sprayed in parts (See photos 1 and 5). There are also stands of kanuka in both catchments above where Deep Creek forks. It would have merit in terms of biodiversity to see these remnant woody areas protected in some form from spraying and burning. (See photos 1, 5 and 6)
- iv The two comparatively small but significant RAPs on Long Gully have considerable value situated where they are in the Upper Clutha basin. Although Lindis RAP A13 Long Gully is a relatively small area, lower altitude shrublands are not well represented in the conservation reserve portfolio making it worthwhile to consider the area of this RAP for protection as conservation land by returning to full crown ownership and control. It would be important that this area was fenced to protect the shrubland from grazing and accidental top dressing. Lindis RAP A14 Long Gully Terrace is "the best example of a relatively natural Upper Clutha land system semi-arid terrace flats" according to the RAP Survey Report. It is crucial to take into consideration that land on both sides of this RAP are currently being offered for sale as lifestyle/grape blocks. This manner of activity would destroy any inherent conservation values in this land.

4 Access

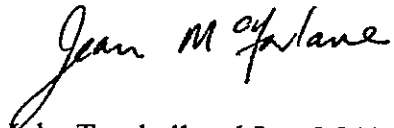
- i *CPL Act 1998 PART 2 Tenure Reviews Sec 24 c (1) has as its aim to "make easier .. The securing of public access and enjoyment of reviewable land...)"*
- ii In the Upper Clutha basin there is an increasing demand for walking access along ridges and beside water bodies. Also for mountain-biking and perhaps to a lesser extent horse riding. Provision must be made for this now. That it is not used now is due to the fact that access to it is not readily available to the public.
- iii It is essential that walking access be provided from Long Gully up the present route to the V.H.F repeater and beyond through Sandypoint, Glenfoyle to Lake Hawea, all of which are at present under Tenure Review. While there is one property between Glenfoyle and Lake Hawea that is freehold, this must not stop the creation of access on Long Gully and Deep Creek. Negotiations through the freehold can be left for the future. There should also be similar access provided in a north-easterly direction from .1046m just west of Trig O, towards Lindis Peak itself to join up with access to come out of Nine Mile (also under tenure review). While Lindis Peak is already freehold; again negotiations can be left for the future. (This route is marked in green on the map attached)
- iv There are legal roads up to the main north to south ridge through Glenfoyle and up the northern boundary ridge of Sandypoint to .1046m. (See the Cadastral maps -

5 Illustrations

- i Plan or map showing the salient points mentioned.
- ii Photo # 1 View from behind woolshed and before road makes up hill, looking towards Long Gully boundary showing type of vegetation.
- iv Photo # 2 View taken from the track to trig O at about 900masl. looking north east towards boundary with Lindis Peak, this shows the noticeable colour change between the modified pasture below and the taller tussock above. This is the back-drop to the Lindis country as seen from Tarras.
- v Photo # 3. View looking north from ridge which divides Deep Creek into approximately half at point ,1230. This shows depleted nature of tussock.
- vi Photo # 4 View from VHF repeater looking north towards back boundary of Long Gully at Trig O .1178masl.
- viii Photo # 5. Further up north branch of Deep Creek showing thick grove of kanuka in foreground and looking over to another area of kanuka in the south branch.
- ix Photo # 6. Looking down the south branch of Deep Creek from near Trig O showing shrublands.

If the points, or issues, we have mentioned in this submission are put into the preliminary proposal there should be a good outcome to the review of tenure. Thank you.

Yours sincerely

A handwritten signature in cursive script that reads "Jean McFarlane". The signature is written in dark ink and is positioned above the typed name.

John Turnbull and Jean McFarlane
For Upper Clutha Branch of Royal Forest and Bird Protection Society.



1



2



3



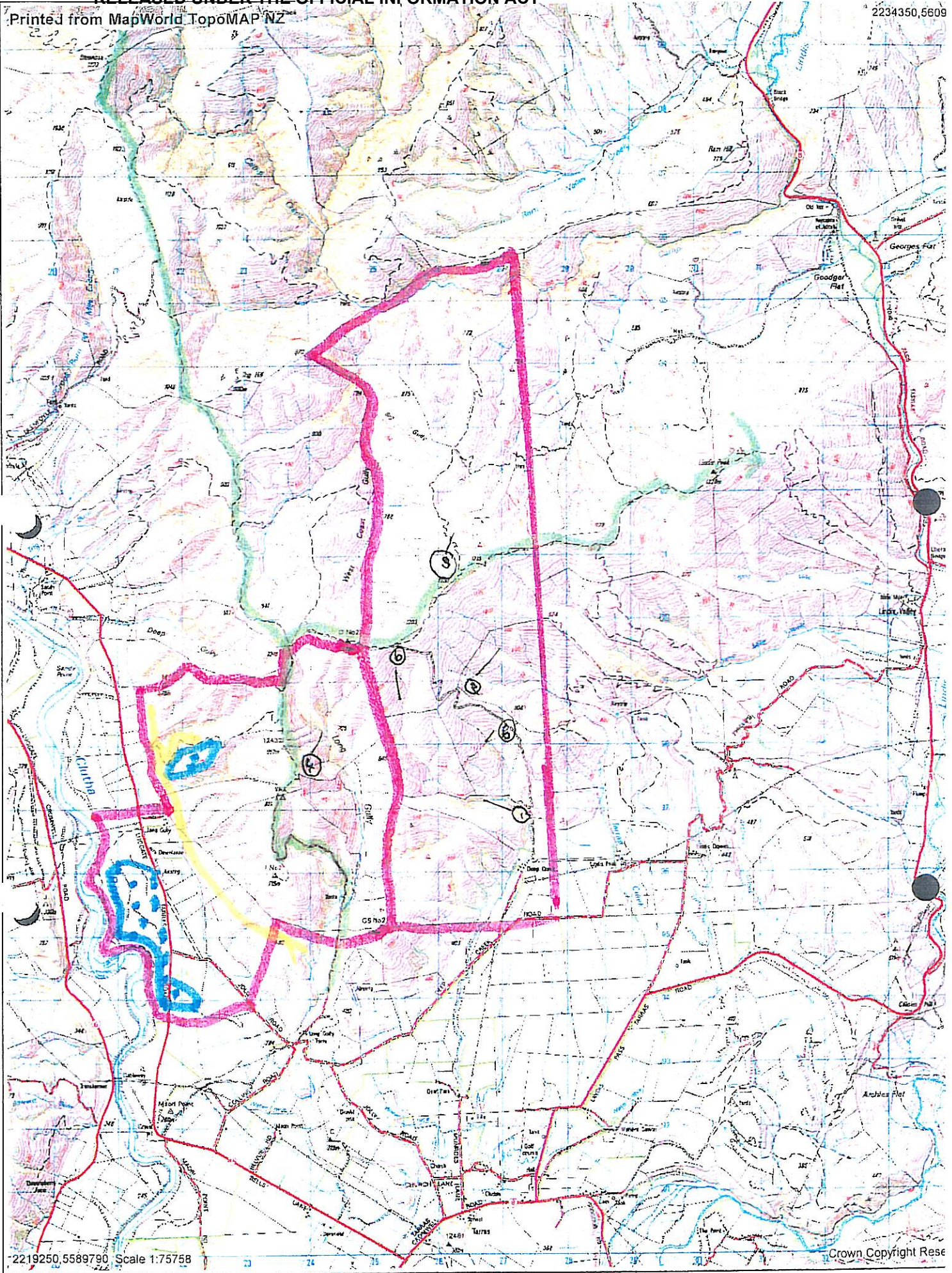
4



5



6



NEW ROAD

Photographs

