

## **Crown Pastoral Land Tenure Review**

**Lease name : HUNTER HILLS**

**Lease number : PT 082**

## **Preliminary Proposal Designations Plan**

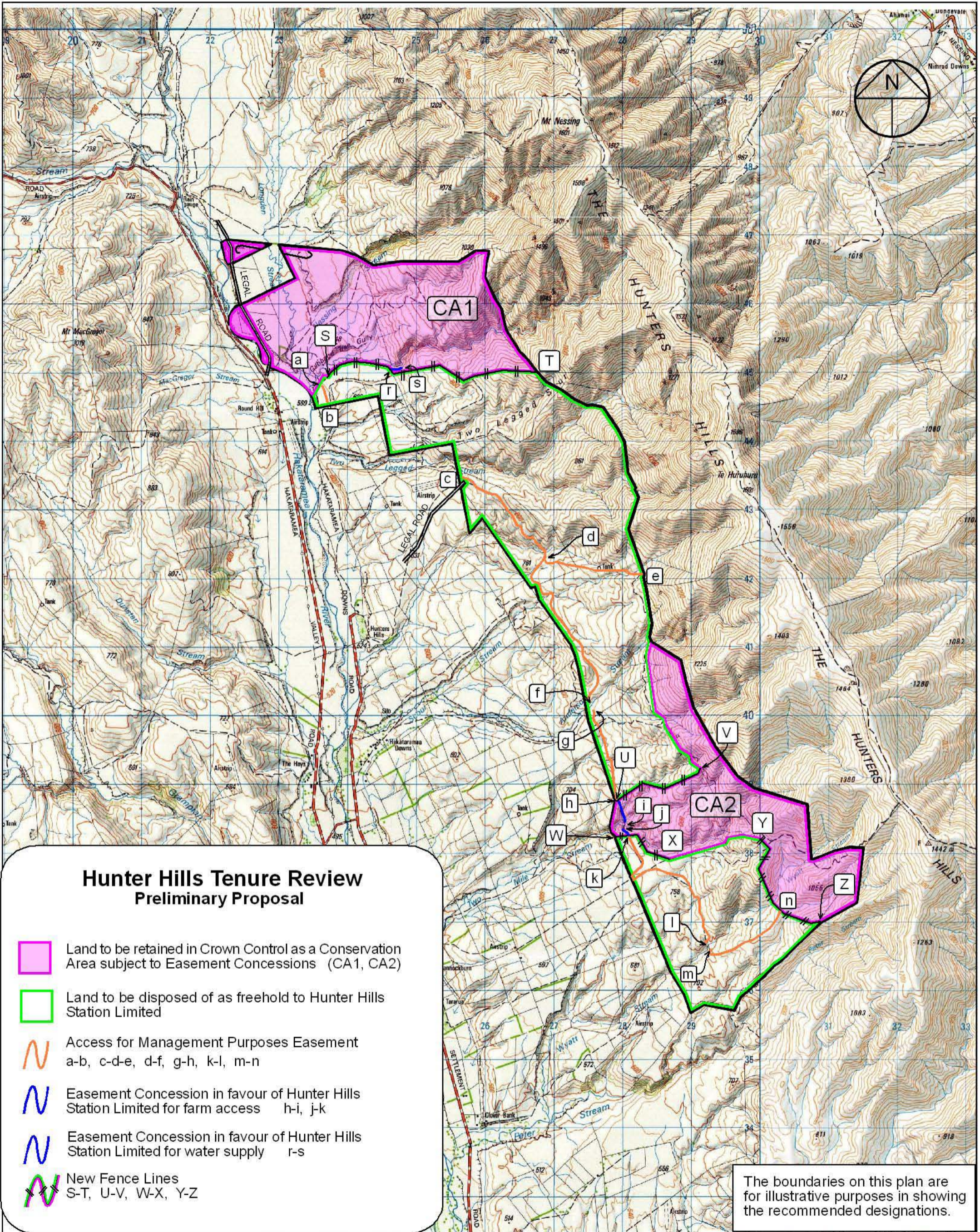
The attached plan is a copy of the Designations Plan included in the Preliminary Proposal for the above review.

The report attached is released under the Official Information Act 1982.

**October**

**09**





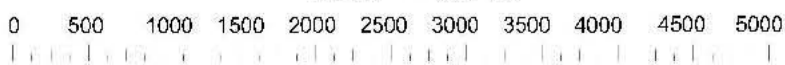
### Hunter Hills Tenure Review Preliminary Proposal

- Land to be retained in Crown Control as a Conservation Area subject to Easement Concessions (CA1, CA2)
- Land to be disposed of as freehold to Hunter Hills Station Limited
- Access for Management Purposes Easement a-b, c-d-e, d-f, g-h, k-l, m-n
- Easement Concession in favour of Hunter Hills Station Limited for farm access h-i, j-k
- Easement Concession in favour of Hunter Hills Station Limited for water supply r-s
- New Fence Lines S-T, U-V, W-X, Y-Z

The boundaries on this plan are for illustrative purposes in showing the recommended designations.

## Hunter Hills

Scale 1:50000



Version	1	2	3	4	5
Canterbury Land District					Sheet 1 of 1
Topographic Map 260 - 139, J39					Date 9/05/07