

Crown Pastoral Land Tenure Review

Lease name : HUNTER HILLS

Lease number : PT 082

Plan attaching to the Conservation Resources Report - Invertebrate Values Map

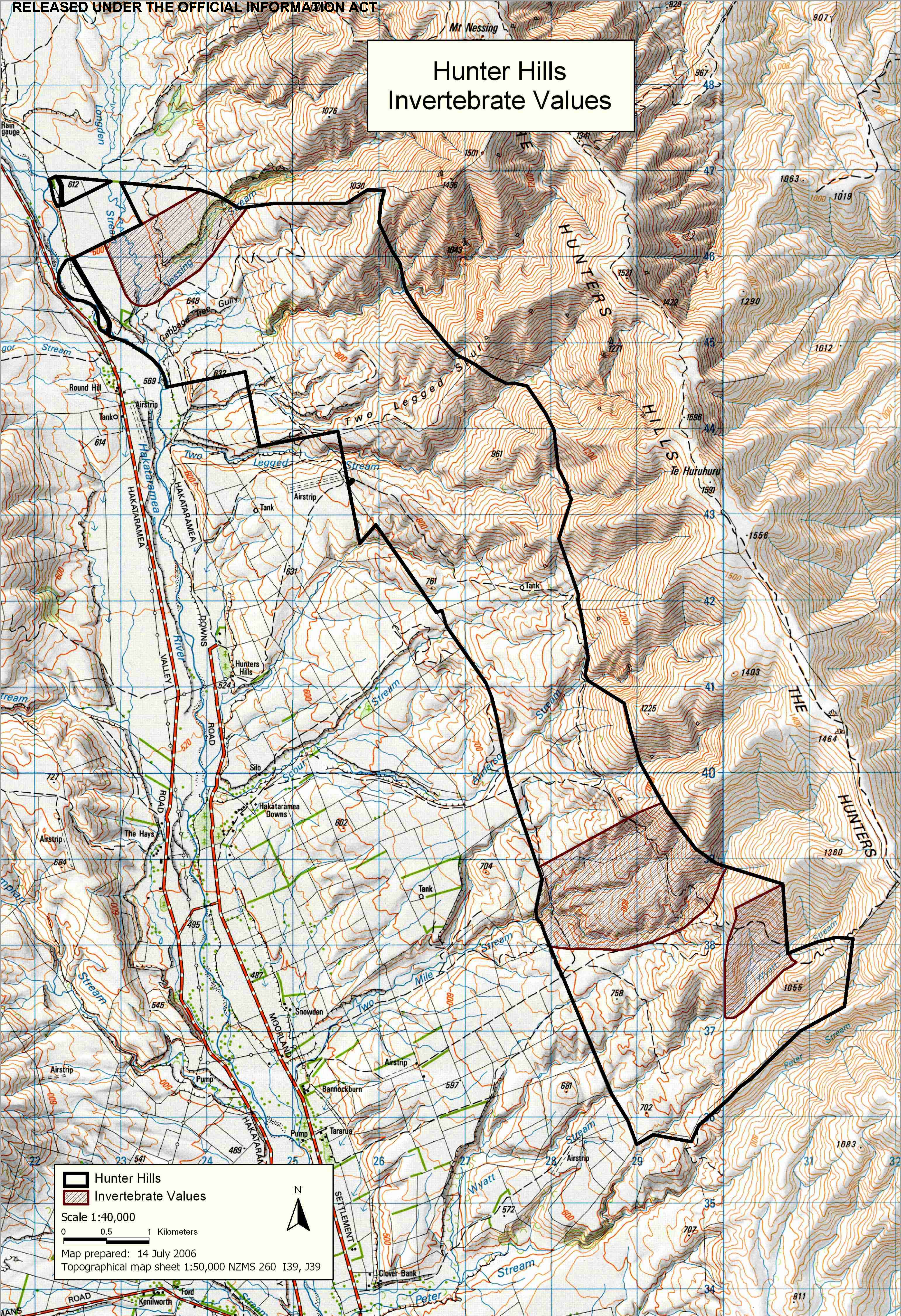
The following plan forms page 30 of the Conservation Resources Report provided by the Department of Conservation.



It is released under the Official information Act 1982.

July

06

Hunter Hills Invertebrate Values



 Hunter Hills
 Invertebrate Values
 Scale 1:40,000
 0 0.5 1 Kilometers
 Map prepared: 14 July 2006
 Topographical map sheet 1:50,000 NZMS 260 139, J39