

Proposals for Pukekōwhai, Ngā Māipi-e-Waru-a-Kupe, Puketihia (peaks):

Pukekōwhai

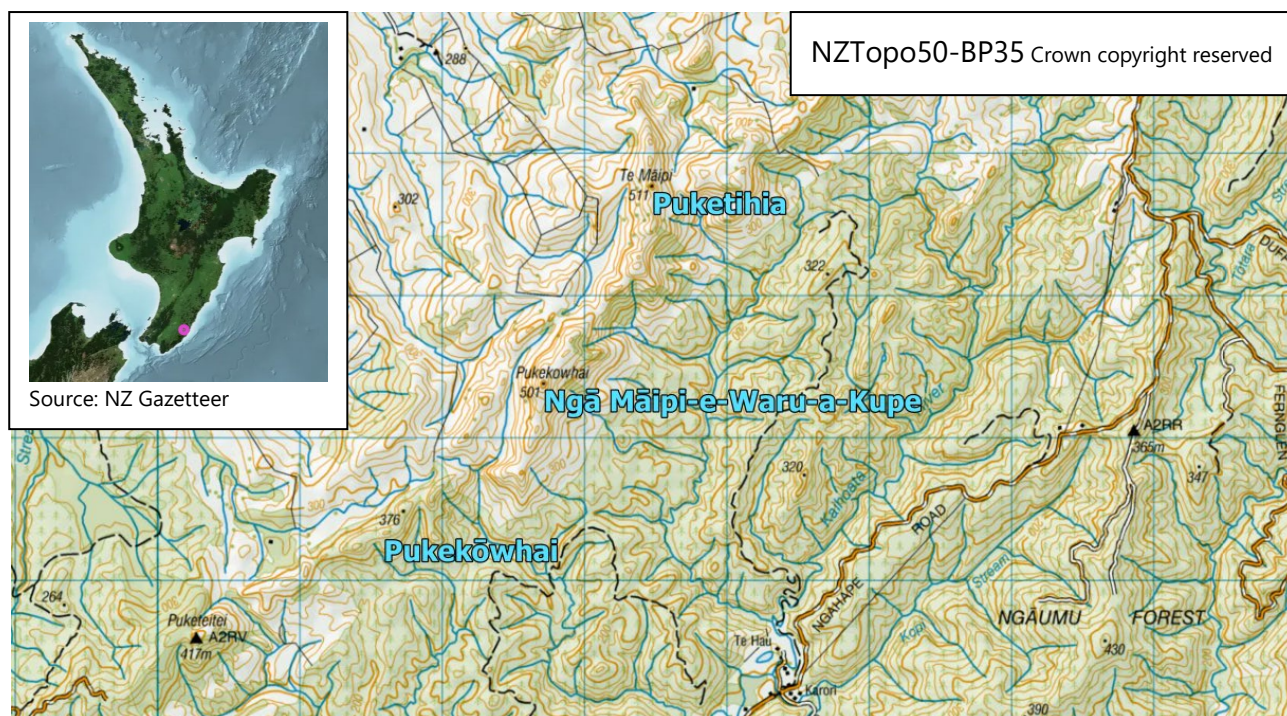
[altered from Pukekowhai and position corrected]

Ngā Māipi-e-Waru-a-Kupe

[altered from Te Māipi and position corrected]

Puketihia

[assign to the maunga currently incorrectly named Te Māipi]



Summary

The proposals are to:

- alter the unofficial recorded name Pukekowhai to Pukekōwhai and correct its position to an unnamed peak ~1km southwest at spot height 376m
- alter the official name Te Māipi to Ngā Māipi-e-Waru-a-Kupe and correct its position to the peak with the unofficial recorded name Pukekowhai, ~1km southwest at spot height 501m
- assign Puketihia as the official name of the peak currently incorrectly named Te Māipi at spot height 511m.

These three maunga are at the western edge of Ngāumu Forest, approximately 14km west of Riversdale Beach (locality) in the Wairarapa.

The proposals aim to resolve a long-standing grievance about the incorrect positions of Te Māipi and Pukekowhai on maps and plans and the related omission of Puketihia, despite these errors being advised as early as 1884.

The proposer, who affiliates to Ngāi Tūmapūhiaarangi and Ngāi Te Ewe¹ hapū, has provided clear historical evidence that the positions of Te Māipi and Pukekowhai have been incorrectly depicted on official maps and plans for

¹ Ngāi Tūmapūhiaarangi (also spelled Ngāi Tūmapūhia-ā-Rangi) is a hapū of Ngāti Kahungunu and Rangitāne (see: [Māori Maps](#)). See the proposal under supporting information for further detail about Ngāi Tūmapūhiaarangi and Ngāi Te Ewe.

more than 150 years. The proposer has also provided evidence to support Ngā Māipi-e-Waru-a-Kupe being the original Māori name for Te Māipi. Ngā Māipi-e-Waru-a-Kupe is the most significant maunga in the rohe of Ngāi Tūmapūhiaarangi and Ngāi Te Ewe. Ngāi Tūmapūhiaarangi Hapū Inc and Ngāti Kahungunu ki Wairarapa Tāmaki-nui-a-Rua Settlement Trust ('Settlement Trust') have provided letters in support of all three proposals. Written consent from the trustees of the Settlement Trust is a requirement to alter Te Māipi as this name was made official under the Ngāti Kahungunu ki Wairarapa Tāmaki-nui-a-Rua Claims Settlement Act 2022 ('Settlement Act 2022').

Board's decisions

At its 15 October 2024 hui the Board made these decisions on the proposals:

That it **accepts** the proposals to **alter** the:

- official place name from Te Māipi to **Ngā Māipi-e-Waru-a-Kupe** and **correct** its position to the peak at 501m
- unofficial recorded place name Pukekowhai to **Pukekōwhai** and **correct** its position to the peak at 376m.

Based on:

- the Board's functions to investigate and determine the positions of features when making place names official,
- historical evidence confirming that the names are not on the correct maunga, and that the full original Māori name of Te Māipi is Ngā Māipi-e-Waru-a-Kupe, and
- the support of Ngāi Tūmapūhiaarangi hapū and written consent from the Ngāti Kahungunu ki Wairarapa Tāmaki nui-a-Rua Settlement Trust, a requirement to alter Te Māipi,

and

Will **notify** as proposals to alter for one month.

AND

That it **accepts** the proposal to **assign Puketihia** as the official place name of the peak at 511m, currently depicted incorrectly as Te Māipi, based on:

- historical evidence that this is the original Māori name of the maunga,
- the Board's functions to investigate and determine the priority of the discovery of a geographic feature, and to collect and encourage the use of original Māori names on official charts and maps, and
- the support of Ngāi Tūmapūhiaarangi hapū and Ngāti Kahungunu ki Wairarapa Tāmaki nui-a-Rua Settlement Trust,

and

Will **notify** as a proposal to assign for one month.

AND

That it will **discontinue** the associated official trig station name **Pukekowhai** in terms of Section 24(2)(b) of the New Zealand Geographic Board (Ngā Pou Taunaha o Aotearoa) Act 2008 ('NZGB Act 2008'), based on:

- the Board no longer having jurisdiction to name trig stations,
- evidence that the name correctly applies to the unnamed peak ~1km southwest at spot height 376m
- public objection being unlikely so public consultation not being needed,

and

Will **notify** as discontinued,

and

If Ngā Māipi-e-Waru-a-Kupe and Pukekōwhai become official in their corrected positions, **advise** the Toitū Te Whenua LINZ Geodetic team of the corrected official names for the two peaks and encourage them to update the two trig names in their system, for consistency and to avoid confusion.

Secretariat assessment

The proposal

The proposer is seeking to:

- alter the unofficial recorded name Pukekowhai to Pukekōwhai and correct its position to an unnamed peak ~1km southwest at spot height 376m
- alter the official name Te Māipi to Ngā Māipi-e-Waru-a-Kupe and correct its position to the peak with the unofficial recorded name Pukekowhai, ~1km southwest at spot height 501m
- assign Puketihia as the official name of the maunga currently incorrectly named Te Māipi at spot height 511m.

The proposer contends that the positions of these three maunga were incorrectly depicted on 19th century survey plans and that these errors have carried through to current topographic maps. The proposer advises that Ngā Māipi-e-Waru-a-Kupe is the most significant peak in the rohe of Ngāi Tūmapūhiaarangi and Ngāi Te Ewe, and is recited in their tribal pepeha.

The proposer has provided comprehensive evidence to support the proposed corrected positions of Pukekowhai, Te Māipi and Puketihia, and the proposed alteration of Te Māipi to Ngā Māipi-e-Waru-a-Kupe, including:

- copies of Native Land Court evidence from the 1888 Te Māipi title investigation, which record the Te Maipi block boundaries (including Te Maipi, Pukekowhai and Puketihia)
- copies of 1884 survey records (plans and correspondence) indicating the positions of these maunga were incorrectly shown on 'Government maps'
- aerial imagery of the features from multiple angles
- a copy of a page from a whakapapa book by Te Aperahama Anaru

- a copy of a May 1904 article from *Matuhi* (a Māori language newspaper published in Masterton).

Names shown on plans, maps and charts

Pukekowhai

Pukekowhai has been depicted on maps and plans at its current position since at least 1866, with the exception of the first edition (1945) of NZMS 1, N162 Wairarapa (see supporting information). It has also been shown spelled as Pukekowai, Pukekohai, Pukikohai, and Puke Kohai. On ML 707 (1884), 'Pukekohai' is also shown for the peak at 376m to the southwest of 'Pukekowai'. On an 1884 land sale plan², 'Pukekohui' is shown for the peak at 376m to the southwest of 'Pukekowai'.

Te Māipi

Te Māipi was shown as 'Te Maipi' on survey plans and maps from 1866 until 1979, when it changed to 'Te Maipa'. See the Te Māipi Treaty name proposal report in supporting information for further details. The current NZTopo50-BP35 map shows 'Te Māipi' as a result of this name being restored by the Settlement Act in 2022. The recent research by the proposer revealing these incorrect positions post-dates the Treaty settlement proposal for Te Māipi.

Puketihia

Puketihia is not named on plans or maps, with the exception of:

Plan/map/chart	Date	Name
ML 707	1884	Puketihia [at the position of Te Māipi (511m)]
Land sale plan 'Kaiwhata Survey District - Block 6 - Sections 1 to 5'	1884	Puketiheia [added in pen at the position of Te Māipi (511m)]

Location, geographic feature type and generic term

The features are three peaks or maunga at spot heights 376m, 501m and 511m just west of Ngāumu Forest, approximately 14km west of Riversdale Beach (locality) in the Wairarapa.

Te Māipi has been depicted on maps and plans without a generic term for more than 150 years and the addition of a generic term is not considered necessary for the alteration to Ngā Māipi-e-Waru-a-Kupe. Pukekōwhai and Puketihia both include the Māori generic 'puke' (hill) as part of their name. However, the Secretariat agrees with the proposer's description of these features as [maunga](#) as they are all above 300m in elevation.

New Zealand Gazetteer, associated names and duplication

The southwestern-most peak at 376m isn't named in the *Gazetteer*. [Pukekowhai](#) is the unofficial recorded name for the middle peak at 501m. [Te Māipi](#), the northeastern-most peak at 511m, was made official by the Settlement Act 2022. It is protected from future change unless the Trustees of the Settlement Trust provide their written consent (see below). There is no other entry for Puketihia in the *Gazetteer*, so duplication is not an issue.

² 'Kaiwhata Survey District - Block 6 - Sections 1 to 5'

[Pukekowhai](#), the official name of the trig station (with no beacon) at 501m, was altered from Pukekawai in 1948.³ The Secretariat recommends that the Board discontinue this official trig name as it doesn't have jurisdiction over the naming of trig stations under the NZGB Act 2008. This would be consistent with the Board's April 2024 decisions to discontinue the official trig station names Tauherenikau, Pohatuhaha and Tawake Tohunga.⁴

The NZTopo50-BP35 map also shows 'Te Maipi' at the end of Te Mapi Road. Toitū Te Whenua LINZ topographic data indicates this is a homestead name and is therefore outside of the Board's and Toitū Te Whenua LINZ's naming jurisdiction.

Ngā Māipi-e-Waru-a-Kupe is associated with other Kupe names in the Wairarapa such as [Ngā Rā-a-Kupe](#) and [Ngā Waka-a-Kupe](#).

[Pukekowhai](#) is duplicated in the unofficial recorded name of a peak ~20km south-southwest of Kaikohe. Pukekowhai (with or without the macron over the [o]) is also partially duplicated in [Pukekōwhai Point](#) (official)⁵, north of Piha, and [Pukekowhai Stream](#) (unofficial recorded), just east of Eketāhuna. This stream is ~53km north-northwest of the peak Pukekowhai as currently depicted at 501m, and isn't considered an associated name. The orthography of [Pukekowhai Stream](#) and [Pukekowhai](#), ~20km south-southwest of Kaikohe, should be standardised with a macron over the [o] through the fast-track approval programme. Te Māipi, Ngā Māipi-e-Waru-a-Kupe and Puketihia are not duplicated in the Gazetteer.

Research, history and references to the features

There is no information about Puketihia in the Board's archives and the only information about Pukekowhai relates to the associated trig station name. Information about Te Māipi is in the Board's 2016 Treaty name proposal report (see supporting information). For additional research on Pukekōwhai see supporting information.

The Ngāti Kahungunu ki Wairarapa Tāmaki nui-a-Rua statement of association for Te Māipi cited two Waitangi Tribunal reports which reference Te Māipi. However, no meaning was provided for the name.⁶ The Secretariat has subsequently accessed these Tribunal reports and notes that the main 2001 report by Dr Takirangi Smith has an entire chapter on the Te Maipi block (named after the maunga) which details its many cultural sites from pā to cultivation sites, tracks and urupā. Smith notes that the full name of Te Māipi 'range' is 'Nga Maipi e Waru' – named for the eight weapons of Kupe. He also states that Puketihia is the northernmost point of the 'range', so named 'because it is the most exposed point'.⁷ Smith records that Kupe put his taiaha at Puketihia.

³ NZ Gazette, 1948 (2), page 939.

⁴ Refer to 'Report on recommendations to discontinue official geographic names', Objective ID A6190647.

⁵ Approved as official with the macron over the [o] under the Board's fast track programme in 2023.

⁶ Dr Takirangi Smith. 2001. 'Land, Water and Resource Use in Wairarapa'. Wai 863, A054; Dr Takirangi Smith. nd. 'Summary: Land, Water and Resource Use in Wairarapa'. Wai 863, A054(a). This latter report is a summary of the first report. These reports weren't cited by the Secretariat back in 2016 – they weren't provided with the Te Māipi proposal and couldn't be accessed online. The Secretariat requested copies from the Waitangi Tribunal in September 2024.

⁷ [Tihi](#) means summit, top, peak, point, apex, maximum.

Other sources also refer to Te Māipi or Ngā Māipi-e-Waru-a-Kupe as a 'range' (of undefined extent) and the Secretariat has discussed this with the proposer. The Secretariat advised that these features look to be too small to be considered ranges and suggested proceeding with the proposals as submitted for maunga features, which the proposer agreed to (see supporting information). A 2010 report on the Wairarapa landscape by Boffa Miskell states that the features currently named Te Māipi and Pukekowhai are actually 'taipo', a local term referring to 'massive bodies of erosion-resistant sandstone'.⁸ They are considered 'distinctive and memorable features' of the area, serving as prominent reference points viewable from Masterton-Stronvar Road to the north. Puketihia is presumably also a taipo.

ML 707 (1884) and an annotated copy of the land sale plan 'Kaiwhata Survey District - Block 6 - Sections 1 to 5' (1884) provide clear evidence that 'Puketihia', 'Te Maipi' and 'Pukekowhai' were incorrectly positioned on earlier survey plans. They show 'Puketihia' next to 'Te Maipi', 'Te Maipi' beneath 'Pukekowai', and 'Pukekohai' and 'Pukekohui' for the peak to the southwest (at 376m). These plans are included in the proposals in supporting information. The plans are also supported by correspondence from surveyor C Crombie who was contracted to survey the Te Maipi and neighbouring Papataia and Parua blocks in September-October 1884. This correspondence notes:

*'The hill marked Te Maipi on the Government maps is called Puketihia by the natives, and Pukekohai is called Te Maipi while they point out a range about a mile from Pukekohai trig which they call Pukekohai'.*⁹

Consultation with iwi

Ngāi Tūmapūhiaarangi Hapū Inc and the Settlement Trust have provided letters of support for all three proposals.

Written consent from the Settlement Trust's trustees to alter Te Māipi is a legal requirement of the Settlement Act 2022 under which this name was made official (section 44 refers).

Although the Settlement Trust has provided written consent to alter Te Māipi, this proposal can't be considered in isolation from the proposals for Puketihia and Pukekōwhai because they are interrelated. Therefore, Rangitāne o Wairarapa and Rangitāne Tū Mai Rā Trust have been asked for their views on all three proposals as a related group in accordance with the Board's 'Kaupapa for Māori Place Names.' Any comments received prior to the Board's 15 October hui will be tabled on the day. Otherwise Rangitāne o Wairarapa and Rangitāne Tū Mai Rā Trust will have opportunity to provide their views through the public consultation process. They will receive one month's notice prior to publication of the *Gazette* notice.

[Secretariat note: support from Rangitāne Tū Mai Rā Trust for the three proposals was tabled at the Board's 15 October 2024 hui.]

⁸ Boffa Miskell, 2010. [Wairarapa Landscape Study 2010 – Landscape Character Description](#), page 54. For other examples of taipo, see: [Mangapakeha Taipo](#) and [Tinui Taipos](#) near Tinui in the Wairarapa.

⁹ Extract from C Crombie correspondence in 'Survey of Papataia, Te Maipi and Parua Blocks', Archives New Zealand, Wellington, R22415420.

Advice on orthography¹⁰

A Te Taura Whiri i te Reo Māori licensed translator had no concerns with the orthography for Puketihia or Pukekōwhai. For Ngā Māipi e Waru a Kupe, the translator advised the orthography Ngā Māipi-e-Waru-a-Kupe. The proposer supports this orthography and is grateful for the translator's 'expert guidance and clarification on this'. The name refers to the eight māipi of Kupe, a māipi being a weapon similar to a taiaha, but longer. See supporting information.

Relevant sections from the [NZGB Act 2008](#)

Section 3(e) provides the means for appropriate recognition to be accorded to cultural and heritage values associated with geographic features.

The Board's principal functions include correcting the spelling of an official or recorded geographic name and investigating and determining the position or extent of a geographic feature when altering or assigning an official name (sections 10(1)(c)(ii) and 10(1)(e) refer).

The Board's functions also include investigating and determining the priority of the discovery of geographic features and collecting and encouraging the use of original Māori names on official charts and maps (sections 10(1)(e) and 11(1)(c)(d)(e) refer).

[Standard for New Zealand place names](#)

1.1 Acceptable names

(b) The Board encourages contemporary Māori place names and the restoration of original Māori place names.

(d) Names that recognise the priority of discovery of significant places, including those of Māori pre-European contact.

The proposals would restore original Māori names that are culturally significant to the proposer and their hapū, Ngāi Te Ewe and Ngāi Tūmapūhiaarangi.

1.6 Altered names

A name may be altered when [abridged]:

- the location of a feature or place is unclear,
- it corrects a significant wrong or grievance.

The proposed alterations would correct a grievance about the lack of government action to correct the positions of these three maunga on official maps and plans, noting errors were first identified in 1884.

Concerns or issues for emergency services

Some confusion is possible should the positions of Te Māipi and Pukekōwhai be altered because they have been in long term use in the wrong positions, and Puketihia has never been named on official maps. The proposed alteration of Te Māipi to Ngā Māipi-e-Waru-a-Kupe may compound the issue, noting it has been named on maps as Te Māipi, Te Maipi or Te Maipa for more than 150 years. Public notification and further consultation will raise awareness and test the issue.

¹⁰ The conventions and rules of how to write a language.

Media

There is unlikely to be media coverage if the Board accepts the proposals for public consultation. Although the peaks are prominent features in the area and visible from Masterton-Stronvar Road, their location is fairly remote.

Supporting information

1. Proposals for Pukekōwhai, Ngā Māipi-e-Waru-a-Kupe and Puketihia – 2024-08-20
2. Email with orthographic advice – 2024-09-04
3. Emails to/from the proposer about the feature type – 2024-09-16, 2024-09-20
4. Letters of support from Ngāi Tūmapūhiaarangi Hapū Inc and Ngāti Kahungunu ki Wairapara Tāmaki nui-a-Rua Settlement Trust – 2024-08-20, 2024-09-17
5. Treaty name proposal for Te Māipi – 2016-09-26
6. Secretariat research for Pukekōwhai