



# Record of Survey - SO 596672

---

**Survey Number** SO 596672  
**Surveyor Reference** 1-19758.00 TUKA  
**Surveyor** Alan Michael Kane  
**Survey Firm** WSP New Zealand Limited (New Plymouth)  
**Surveyor Declaration** I Alan Michael Kane, being a licensed cadastral surveyor, certify that--  
(a) this dataset provided by me and its related survey are accurate, correct and in accordance with the Cadastral Survey Act 2002 and Cadastral Survey Rules 2021; and  
(b) the survey was undertaken by me or under my personal direction.  
Declared on 14 Mar 2024 04:10 PM

---

## Survey Details

<b>Dataset Description</b>	Sections 1-6 and Marginal Strip A	<b>Type</b>	Survey
<b>Purpose</b>	Legalisation	<b>Survey Class</b>	Class B
<b>Status</b>	Approved as to Survey	<b>Vertical Datum</b>	None
<b>Land District</b>	Gisborne		
<b>Meridional Circuit</b>	Poverty Bay 2000		

---

## Survey Dates

<b>Surveyed Date</b>	08/12/2023	<b>Certified Date</b>	14/03/2024
<b>Submitted Date</b>	14/03/2024 16:10:59	<b>Survey Approval Date</b>	19/03/2024
<b>Deposit Date</b>			

---

## Referenced Surveys

Survey Number	Land District	Bearing Correction
SO 3154	Gisborne	-0°54'00"
SO 5652	Gisborne	0°00'00"
SO 6099	Gisborne	0°00'00"
ML 7731	Gisborne	0°00'00"
SO 7057	Gisborne	0°00'00"
SO 1681	Gisborne	-0°54'00"
ML 374683	Gisborne	0°00'00"
ML 417184	Gisborne	0°00'00"
SO 478033	Gisborne	0°00'00"
SO 487598	Gisborne	0°00'00"

---

## Territorial Authorities

Ōpōtiki District

---

## Comprised In

GN NZG 1974 p 1403  
GN GN 113096.1  
GN NZG 1966 p 1554



# Record of Survey - SO 596672

---

## Created Parcels

Parcels	Parcel Intent	Area	RT Reference
Section 1 Survey Office Plan 596672	Legalisation	26.8568 Ha	
Section 2 Survey Office Plan 596672	Legalisation	1.6212 Ha	
Section 3 Survey Office Plan 596672	Legalisation	2.4790 Ha	
Section 4 Survey Office Plan 596672	Legalisation	3.5218 Ha	
Section 5 Survey Office Plan 596672	Fee Simple Title	0.4189 Ha	
Section 6 Survey Office Plan 596672	Fee Simple Title	0.2126 Ha	
	Hydro	1.3646 Ha	
	Hydro	0.7464 Ha	
	Hydro	0.0876 Ha	
	Erosion	0.7047 Ha	
	Erosion	0.1084 Ha	
	Hydro	0.1422 Ha	
Marginal Strip A Survey Office Plan 596672	Marginal Strip - Movable		
	Erosion	0.0254 Ha	
<b>Total Area</b>		<hr/> 38.2896 Ha	

# Mark and Vector

Survey Number SO 596672

Meridional Circuit Poverty Bay 2000

From	To	Code	Bearing	Adpt Surv	Bearing Correction	Distance	Adpt Surv	Class
IB XI SO 5652	IT IX SO 5652	ob0	165°15'30"	A ML 7731	0°00'00"	312.55 A	ML 7731	
IT IX SO 5652	IS VIII SO 5652	ob1	163°03'00"	A SO 5652	0°00'00"	68.80 A	SO 5652	
IS VIII SO 5652	IT VII SO 5652	ob2	179°32'00"	A SO 5652	0°00'00"	192.28 A	SO 5652	
IT VII SO 5652	PEG VIIa SO 5652	ob3	229°25'00"	A SO 5652	0°00'00"	6.06 A	SO 5652	
PEG VIIa SO 5652	PEG VIIIa SO 5652	ob5	357°56'00"	A SO 5652	0°00'00"	195.86 A	ML 417184	
PEG VIIIa SO 5652	PEG VIIIb SO 5652	ob6	313°23'00"	A SO 5652	0°00'00"	34.70 A	SO 5652	
PEG VIIIb SO 5652	PEG Xa SO 5652	ob7	351°42'00"	A SO 5652	0°00'00"	104.41 A	SO 5652	
PEG Xa SO 5652	PEG XIa SO 5652	ob8	348°23'30"	A SO 5652	0°00'00"	248.04 A	SO 5652	
PEG XIa SO 5652	IB XI SO 5652	ob9	155°30'00"	A SO 5652	0°00'00"	1.75 A	SO 5652	
IT VII SO 5652	IT XVI SO 7057	ob4	178°27'35"	A SO 7057	0°00'00"	2,640.23 A	SO 7057	
IT XVI SO 7057	IT XV SO 7057	ob10	243°20'40"	A SO 7057	0°00'00"	229.64 A	SO 7057	
IT XV SO 7057	IT II SO 7057	ob11	357°06'38"	A ML 374683	0°00'00"	1,852.21 A	ML 374683	
IT II SO 7057	IT 1 SO 478033	ob15	91°42'30"	A SO 478033	0°00'00"	279.53 A	SO 478033	
IT 1 SO 478033	IT (3) SO 7057	ob17	352°31'00"	A SO 478033	0°00'00"	255.70 A	SO 478033	
IT (3) SO 7057	IT VII SO 5652	ob18	358°22'00"	A SO 487598	0°00'00"	647.55 A	SO 487598	
IT XV SO 7057	IT XIV SO 7057	ob12	32°49'00"	A SO 7057	0°00'00"	274.77 A	SO 7057	
IT XIV SO 7057	IT XIII SO 7057	ob19	6°38'20"	A SO 7057	0°00'00"	295.48 A	SO 7057	
IT XIII SO 7057	IT XII SO 7057	ob20	314°22'00"	A SO 7057	0°00'00"	41.33 A	SO 7057	
IT XII SO 7057	IT XI SO 7057	ob21	57°39'00"	A SO 7057	0°00'00"	58.44 A	SO 7057	
IT XI SO 7057	IT X SO 7057	ob22	351°53'20"	A SO 7057	0°00'00"	110.78 A	SO 7057	
IT X SO 7057	IT IX SO 7057	ob23	346°07'40"	A SO 7057	0°00'00"	164.51 A	SO 7057	
IT IX SO 7057	IT VIII SO 7057	ob25	4°37'00"	A SO 7057	0°00'00"	157.48 A	SO 7057	
IT VIII SO 7057	IT VII SO 7057	ob26	5°51'20"	A SO 7057	0°00'00"	219.99 A	SO 7057	
IT VII SO 7057	IT VI SO 7057	ob27	357°51'20"	A SO 7057	0°00'00"	52.40 A	SO 7057	
IT VI SO 7057	IT (1) SO 7057	ob28	324°59'20"	A SO 7057	0°00'00"	68.72 A	SO 7057	
IT (1) SO 7057	IT (2) SO 7057	ob30	351°33'00"	A SO 7057	0°00'00"	97.97 A	SO 7057	
IT (2) SO 7057	IT V SO 7057	ob31	6°44'00"	A SO 7057	0°00'00"	134.26 A	SO 7057	
IT V SO 7057	IT IV SO 7057	ob33	350°42'00"	A SO 7057	0°00'00"	36.65 A	SO 7057	
IT IV SO 7057	IT III SO 7057	ob34	8°18'20"	A ML 374683	0°00'00"	84.04 A	ML 374683	
IT III SO 7057	IT 1 SO 478033	ob35	13°29'20"	A SO 478033	0°00'00"	157.86 A	SO 478033	
IT III SO 7057	IT II SO 7057	ob36	303°42'20"	A SO 478033	0°00'00"	291.61 A	SO 478033	
IT (2) SO 7057	IS III SO 5652	ob32	6°52'40"	A SO 5652	0°00'00"	133.05 A	SO 5652	
IS III SO 5652	IS IV SO 5652	ob37	351°18'00"	A SO 5652	0°00'00"	40.35 A	SO 5652	
IS IV SO 5652	POST V SO 5652	ob38	0°24'00"	A SO 5652	0°00'00"	43.13 A	SO 5652	
POST V SO 5652	IT (3) SO 7057	ob39	1°58'30"	A SO 5652	0°00'00"	444.84 A	SO 5652	
IT XV SO 7057	PEG VI SO 7057	ob13	160°14'00"	A ML 374683	0°00'00"	46.20 A	ML 374683	

# Mark and Vector

Survey Number SO 596672

Meridional Circuit Poverty Bay 2000

From	To	Code	Bearing	Adpt Surv	Bearing Correction	Distance	Adpt Surv	Class
PEG VI SO 7057	PEG K SO 3154	ob40	12°06'00"	A SO 3154	-0°54'00"	74.03	A SO 3154	Class B
PEG K SO 3154	PEG J SO 3154	ob41	12°06'00"	A SO 3154	-0°54'00"	121.08	A SO 3154	Class B
PEG J SO 3154	UNMK 21 SO 596672	ob42	12°06'00"	A SO 3154	-0°54'00"	21.64	C	Class B
UNMK 21 SO 596672	PEG I SO 7057	ob43	12°06'00"	A SO 3154	-0°54'00"	95.56	C	Class B
PEG I SO 7057	IT XIV SO 7057	ob45	114°33'00"	A SO 7057	0°00'00"	74.50	A SO 7057	
PEG I SO 7057	PEG H SO 3154	ob46	12°06'00"	A SO 3154	-0°54'00"	104.91	A SO 3154	Class B
PEG H SO 3154	PEG G SO 3154	ob59	12°06'00"	A SO 3154	-0°54'00"	27.38	A SO 3154	Class B
PEG G SO 3154	PEG F SO 3154	ob60	12°06'00"	A SO 3154	-0°54'00"	101.27	A SO 3154	Class B
PEG F SO 3154	PEG V SO 7057	ob61	12°06'00"	A SO 3154	-0°54'00"	51.76	A SO 3154	Class B
PEG V SO 7057	IT XII SO 7057	ob62	45°11'00"	A SO 7057	0°00'00"	17.79	A SO 7057	
IT X SO 7057	PEG (2) SO 7057	ob24	343°46'00"	A SO 7057	0°00'00"	37.91	A SO 7057	
PEG (2) SO 7057	PEG (1) SO 7057	ob64	343°27'00"	A SO 7057	0°00'00"	95.25	A SO 7057	Class B
PEG (1) SO 7057	IT IX SO 7057	ob65	356°58'00"	A SO 7057	0°00'00"	32.06	A SO 7057	
PEG V SO 7057	PEG IV (1) SO 3154	ob63	57°06'00"	A SO 3154	-0°54'00"	70.43	A SO 3154	Class B
PEG IV (1) SO 3154	PEG (2) SO 3154	ob67	349°49'00"	A SO 3154	-0°54'00"	108.89	A SO 3154	Class B
PEG (2) SO 3154	PEG (2) SO 7057	ob68	354°41'00"	A SO 3154	-0°54'00"	44.78	A SO 3154	Class B
PEG (1) SO 7057	PEG E SO 3154	ob66	359°10'00"	A SO 3154	-0°54'00"	185.66	A SO 3154	Class B
PEG E SO 3154	PEG D SO 7057	ob69	359°10'00"	A SO 3154	-0°54'00"	195.88	A SO 3154	Class B
PEG D SO 7057	IT VII SO 7057	ob70	56°04'00"	A SO 7057	0°00'00"	47.05	A SO 7057	
IT VI SO 7057	PEG C SO 7057	ob29	247°29'00"	A SO 7057	0°00'00"	41.22	A SO 7057	
PEG C SO 7057	IT (1) SO 7057	ob72	358°54'40"	A SO 5652	0°00'00"	72.04	A SO 5652	
PEG D SO 7057	PEG C SO 7057	ob71	359°09'30"	A SO 5652	0°00'00"	62.89	A SO 3154	Class B
PEG C SO 7057	UNMK 1 SO 596672	ob73	359°09'30"	A SO 5652	0°00'00"	49.28	C	Class B
UNMK 1 SO 596672	IT B SO 5652	ob47	359°09'30"	A SO 5652	0°00'00"	287.80	C	Class B
IT B SO 5652	IS IV SO 5652	ob49	345°58'00"	A SO 5652	0°00'00"	3.98	A SO 5652	
IT B SO 5652	PEG II (2) SO 3154	ob50	359°09'30"	A SO 5652	0°00'00"	68.26	A SO 5652	Class B
PEG II (2) SO 3154	PEG 5 SO 478033	ob51	359°09'30"	A SO 5652	0°00'00"	15.40	A SO 478033	
PEG 5 SO 478033	IT III SO 7057	ob53	86°14'00"	A SO 478033	0°00'00"	12.44	A SO 478033	
PEG II (2) SO 3154	PEG (6) SO 3154	ob52	294°22'00"	A SO 3154	-0°54'00"	43.43	A SO 3154	Class B
PEG (6) SO 3154	UNMK 20 SO 596672	ob54	294°22'00"	A SO 3154	-0°54'00"	112.51	C	Class B
UNMK 20 SO 596672	PEG I SO 3154	ob55	294°22'00"	A SO 3154	-0°54'00"	189.12	C	Class B
PEG I SO 3154	UNMK 23 SO 596672	ob56	279°36'00"	A SO 3154	-0°54'00"	96.97	C	Class BD

# Mark and Vector

Survey Number SO 596672

Meridional Circuit Poverty Bay 2000

From	To	Code	Bearing	Adpt Surv	Bearing Correction	Distance	Adpt Surv	Class
UNMK 23 SO 596672	PEG (5) SO 3154	ob138	279°36'00"	A SO 3154	-0°54'00"	1.22 C		Class BD
PEG (5) SO 3154	UNMK (9) SO 3154	ob58	279°36'00"	A SO 3154	-0°54'00"	2.27 A SO 3154		Class BD
UNMK (9) SO 3154	UNMK (6) SO 3154	ob108	279°36'00"	A SO 3154	-0°54'00"	14.08 A SO 3154		
UNMK (6) SO 3154	PEG III SO 3154	ob74	176°09'00"	A SO 3154	-0°54'00"	146.53 A SO 3154		
PEG III SO 3154	PEG IV (2) SO 3154	ob76	138°09'00"	A SO 3154	-0°54'00"	364.74 A SO 3154		
PEG IV (2) SO 3154	PEG IVA SO 3154	ob77	178°35'00"	A SO 3154	-0°54'00"	214.55 A SO 3154		
PEG IVA SO 3154	PEG VII (1) SO 3154	ob78	178°35'00"	A SO 3154	-0°54'00"	308.19 A SO 3154		
PEG VII (1) SO 3154	UNMK (3) SO 3154	ob80	215°22'00"	A SO 3154	-0°54'00"	8.05 A SO 3154		
UNMK (3) SO 3154	PEG VIII SO 3154	ob97	215°22'00"	A SO 3154	-0°54'00"	222.33 A SO 3154		
PEG VIII SO 3154	PEG IX SO 3154	ob81	178°55'00"	A SO 3154	-0°54'00"	263.17 A SO 3154		
PEG IX SO 3154	UNMK (5) SO 3154	ob83	139°32'00"	A SO 3154	-0°54'00"	72.92 A SO 3154		
UNMK (5) SO 3154	PEG X SO 3154	ob84	139°32'00"	A SO 3154	-0°54'00"	150.11 A SO 3154		
PEG X SO 3154	PEG XI SO 3154	ob86	197°23'00"	A SO 3154	-0°54'00"	113.74 A SO 3154		
PEG XI SO 3154	UNMK (4) SO 3154	ob87	261°38'00"	A SO 3154	-0°54'00"	4.02 A SO 3154		
UNMK (4) SO 3154	PEG XII SO 3154	ob98	261°38'00"	A SO 3154	-0°54'00"	116.98 A SO 3154		
PEG XII SO 3154	UNMK (2) SO 3154	ob88	171°43'00"	A SO 3154	-0°54'00"	20.12 A SO 3154		
UNMK (2) SO 3154	PEG XIII SO 3154	ob99	171°43'00"	A SO 3154	-0°54'00"	99.53 A SO 3154		
PEG XIII SO 3154	UNMK (1) SO 3154	ob89	163°13'00"	A SO 3154	-0°54'00"	14.08 A SO 3154		
UNMK (1) SO 3154	PEG XIV SO 3154	ob100	163°13'00"	A SO 3154	-0°54'00"	68.04 A SO 3154		
PEG XIV SO 3154	UNMK (7) SO 3154	ob90	102°25'00"	A SO 3154	-0°54'00"	132.36 A SO 3154		
UNMK (7) SO 3154	PEG VII (2) SO 3154	ob91	102°25'00"	A SO 3154	-0°54'00"	1.01 A SO 3154		Class BD
PEG VII (2) SO 3154	PEG VI SO 7057	ob92	9°07'00"	A SO 3154	-0°54'00"	36.69 A SO 3154		Class B
PEG VIII SO 3154	UNMK (10) SO 3154	ob82	118°48'00"	A SO 3154	-0°54'00"	28.69 A SO 6099		
UNMK (10) SO 3154	PEG (4) SO 3154	ob93	118°48'00"	A SO 3154	-0°54'00"	4.12 A SO 3154		
PEG (4) SO 3154	PEG V SO 7057	ob94	118°48'00"	A SO 3154	-0°54'00"	307.69 A SO 3154		

# Mark and Vector

Survey Number SO 596672

Meridional Circuit Poverty Bay 2000

From	To	Code	Bearing	Adpt Surv	Bearing Correction	Distance	Adpt Surv	Class
PEG IVA SO 3154	UNMK (8) SO 3154	ob79	89°06'00"	A SO 3154	-0°54'00"	43.59 A	SO 3154	
UNMK (8) SO 3154	PEG D SO 7057	ob109	89°06'00"	A SO 3154	-0°54'00"	132.19 A	SO 3154	
UNMK (5) SO 3154	PEG (7) SO 3154	ob85	192°15'00"	A SO 3154	-0°54'00"	112.33 A	SO 3154	
PEG (7) SO 3154	PEG (3) SO 3154	ob95	178°53'00"	A SO 3154	-0°54'00"	91.15 A	SO 3154	
PEG (3) SO 3154	PEG XII SO 3154	ob96	220°59'00"	A SO 3154	-0°54'00"	52.22 A	SO 3154	
UNMK (6) SO 3154	PEG IIA SO 3154	ob75	356°09'00"	A SO 3154	-0°54'00"	231.42 A	SO 3154	
PEG IIA SO 3154	PEG II (1) SO 3154	ob101	356°09'00"	A SO 3154	-0°54'00"	105.29 A	SO 3154	
PEG II (1) SO 3154	PEG I (1) SO 1681	ob102	344°51'00"	A SO 3154	-0°54'00"	315.57 A	SO 3154	
PEG I (1) SO 1681	PEG (2) SO 1681	ob103	18°51'00"	A SO 3154	-0°54'00"	76.31 A	SO 3154	
PEG (2) SO 1681	PEG I (2) SO 1681	ob104	0°26'30"	A SO 1681	-0°54'00"	324.18 A	SO 1681	
PEG I (2) SO 1681	PEG II SO 1681	ob105	36°35'30"	A SO 1681	-0°54'00"	270.47 A	SO 1681	
PEG II SO 1681	IS (1) ML 6581	ob106	27°50'30"	A SO 1681	-0°54'00"	308.17 A	SO 1681	
IS (1) ML 6581	IB XI SO 5652	ob107	120°53'40"	A ML 7731	0°00'00"	111.67 A	ML 7731	
UNMK 1 SO 596672	UNMK 2 SO 596672	ob48	341°05'00"	C		39.88 C		Class B
UNMK 2 SO 596672	UNMK 3 SO 596672	ob139	309°15'00"	C		48.60 C		Class B
UNMK 3 SO 596672	UNMK 4 SO 596672	ob111	279°43'00"	C		31.72 C		Class B
UNMK 4 SO 596672	UNMK 5 SO 596672	ob112	23°19'00"	C		23.59 C		Class B
UNMK 5 SO 596672	UNMK 6 SO 596672	ob113	58°50'00"	C		27.45 C		Class B
UNMK 6 SO 596672	UNMK 7 SO 596672	ob114	34°42'00"	C		38.60 C		Class B
UNMK 7 SO 596672	UNMK 8 SO 596672	ob115	17°14'00"	C		36.39 C		Class B
UNMK 8 SO 596672	UNMK 9 SO 596672	ob116	322°04'00"	C		25.94 C		Class B
UNMK 9 SO 596672	UNMK 10 SO 596672	ob117	1°21'00"	C		13.78 C		Class B
UNMK 10 SO 596672	UNMK 11 SO 596672	ob118	40°27'00"	C		13.82 C		Class B
UNMK 11 SO 596672	UNMK 12 SO 596672	ob119	354°29'00"	C		11.87 C		Class B
UNMK 12 SO 596672	UNMK 13 SO 596672	ob120	305°18'00"	C		17.56 C		Class B

# Mark and Vector

Survey Number SO 596672

Meridional Circuit Poverty Bay 2000

From	To	Code	Bearing	Adpt Surv	Bearing Correction	Distance	Adpt Surv	Class
UNMK 13 SO 596672	UNMK 14 SO 596672	ob121	270°15'00"	C		42.55 C		Class B
UNMK 14 SO 596672	UNMK 15 SO 596672	ob122	291°16'00"	C		28.84 C		Class B
UNMK 15 SO 596672	UNMK 16 SO 596672	ob123	316°49'00"	C		41.99 C		Class B
UNMK 16 SO 596672	UNMK 17 SO 596672	ob124	20°19'00"	C		35.71 C		Class B
UNMK 17 SO 596672	UNMK 18 SO 596672	ob125	347°17'00"	C		25.86 C		Class B
UNMK 18 SO 596672	UNMK 19 SO 596672	ob126	3°54'00"	C		27.18 C		Class B
UNMK 19 SO 596672	UNMK 20 SO 596672	ob127	339°04'00"	C		54.01 C		Class B
IT II SO 7057	UNMK 24 SO 596672	ob16	213°57'10"	C		239.58 C		
UNMK 24 SO 596672	UNMK 25 SO 596672	ob140	128°55'10"	C		240.68 C		
UNMK 25 SO 596672	UNMK 26 SO 596672	ob141	149°05'40"	C		82.09 C		
UNMK 26 SO 596672	UNMK 27 SO 596672	ob128	180°34'10"	C		320.04 C		
UNMK 27 SO 596672	UNMK 28 SO 596672	ob129	179°17'00"	C		38.86 C		
UNMK 28 SO 596672	UNMK 29 SO 596672	ob142	177°49'20"	C		62.78 C		
UNMK 29 SO 596672	UNMK 30 SO 596672	ob143	171°30'00"	C		20.34 C		
UNMK 30 SO 596672	UNMK 31 SO 596672	ob144	200°39'00"	C		171.81 C		
UNMK 31 SO 596672	UNMK 32 SO 596672	ob130	213°15'40"	C		83.61 C		
UNMK 32 SO 596672	UNMK 33 SO 596672	ob131	196°26'00"	C		148.41 C		
UNMK 33 SO 596672	UNMK 34 SO 596672	ob132	164°30'40"	C		204.02 C		
UNMK 35 SO 596672	UNMK 36 SO 596672	ob134	186°36'20"	C		168.20 C		
UNMK 36 SO 596672	UNMK 37 SO 596672	ob135	171°44'00"	C		24.19 C		
UNMK 37 SO 596672	UNMK 38 SO 596672	ob145	263°25'00"	C		28.50 C		
UNMK 38 SO 596672	UNMK 39 SO 596672	ob136	164°33'00"	C		129.25 C		
UNMK 39 SO 596672	UNMK 40 SO 596672	ob137	127°36'00"	C		32.88 C		
UNMK 40 SO 596672	IT XV SO 7057	ob146	79°17'00"	C		99.46 C		

# Mark and Vector

Survey Number SO 596672

Meridional Circuit Poverty Bay 2000

From	To	Code	Bearing	Adpt Surv	Bearing Correction	Distance	Adpt Surv	Class
IT XV SO 7057	UNMK 22 SO 596672	ob14	356°10'50"	C		200.19 C		
UNMK 22 SO 596672	IT XIV SO 7057	ob110	79°07'20"	C		165.23 C		
UNMK 21 SO 596672	UNMK 22 SO 596672	ob44	292°48'20"	C		80.75 C		Class BD
PEG (5) SO 3154	UNMK 24 SO 596672	ob57	165°20'20"	C		185.43 C		
UNMK 34 SO 596672	UNMK 41 SO 596672	ob133	196°51'00"	C		18.48 C		
UNMK 41 SO 596672	UNMK 42 SO 596672	ob147	191°20'00"	C		49.17 C		
UNMK 42 SO 596672	UNMK 35 SO 596672	ob148	197°27'00"	C		33.30 C		

Mark Name	Mark Condition	Description
UNMK (1) SO 3154		FB GS-AK 3576 P16
UNMK (2) SO 3154		FB GS-AK 3576 P15
UNMK (3) SO 3154		FB GS-AK 3576 P15
UNMK (4) SO 3154		FB GS-AK 3576 P15
UNMK (7) SO 3154		FB GS-AK 3566 P1
UNMK (9) SO 3154		FB GS-AK 3648 P36
UNMK 10 SO 596672		Depicted edge of bushline from aerial imagery
UNMK 11 SO 596672		Depicted edge of bushline from aerial imagery
UNMK 12 SO 596672		Depicted edge of bushline from aerial imagery
UNMK 13 SO 596672		Depicted edge of bushline from aerial imagery
UNMK 14 SO 596672		Depicted edge of bushline from aerial imagery
UNMK 15 SO 596672		Depicted edge of bushline from aerial imagery
UNMK 16 SO 596672		Depicted edge of bushline from aerial imagery
UNMK 17 SO 596672		Depicted edge of bushline from aerial imagery
UNMK 18 SO 596672		Depicted edge of bushline from aerial imagery
UNMK 19 SO 596672		Depicted edge of bushline from aerial imagery
UNMK 2 SO 596672		Depicted edge of bushline from aerial imagery
UNMK 21 SO 596672		Unmarked
UNMK 23 SO 596672		Unmarked intersection of river banks from aerial and SO 3154 adoption
UNMK 24 SO 596672		Unmarked intersection of river banks from aerial and SO 3154 adoption
UNMK 25 SO 596672		Unmarked intersection of river banks from aerial and SO 3154 adoption



# Mark and Vector

**Survey Number** SO 596672  
**Meridional Circuit** Poverty Bay 2000

Mark Name	Mark Condition	Description
UNMK 26 SO 596672		Unmarked intersection of river banks from aerial and SO 3154 adoption
UNMK 27 SO 596672		Unmarked intersection of river banks from aerial and SO 3154 adoption
UNMK 28 SO 596672		Unmarked intersection of river banks from aerial and SO 3154 adoption
UNMK 29 SO 596672		Unmarked intersection of river banks from aerial and SO 3154 adoption
UNMK 3 SO 596672		Depicted edge of bushline from aerial imagery
UNMK 30 SO 596672		Unmarked intersection of river banks from aerial and SO 3154 adoption
UNMK 31 SO 596672		Unmarked intersection of river banks from aerial and SO 3154 adoption
UNMK 32 SO 596672		Unmarked intersection of river banks from aerial and SO 3154 adoption
UNMK 33 SO 596672		Unmarked intersection of river banks from aerial and SO 3154 adoption
UNMK 34 SO 596672		Unmarked intersection of river banks from aerial and SO 3154 adoption
UNMK 35 SO 596672		Unmarked intersection of river banks from aerial and SO 3154 adoption
UNMK 36 SO 596672		Unmarked intersection of river banks from aerial and SO 3154 adoption
UNMK 37 SO 596672		Unmarked marginal strip intersection
UNMK 38 SO 596672		Unmarked intersection of river banks from aerial and SO 3154 adoption
UNMK 39 SO 596672		Unmarked intersection of river banks from aerial and SO 3154 adoption
UNMK 4 SO 596672		Depicted edge of bushline from aerial imagery
UNMK 40 SO 596672		Unmarked marginal strip intersection
UNMK 41 SO 596672		Unmarked intersection of river banks from aerial and SO 3154 adoption
UNMK 42 SO 596672		Unmarked intersection of river banks from aerial and SO 3154 adoption
UNMK 5 SO 596672		Depicted edge of bushline from aerial imagery
UNMK 6 SO 596672		Depicted edge of bushline from aerial imagery
UNMK 7 SO 596672		Depicted edge of bushline from aerial imagery
UNMK 8 SO 596672		Depicted edge of bushline from aerial imagery
UNMK 9 SO 596672		Depicted edge of bushline from aerial imagery

\*\*\* End of Report \*\*\*



SO 596672

## SCHEDULE OF AREAS

Land District *Gisborne*Project Reference *1-19758.00 TUKA*Territorial Authority *Opotiki District Council*

### Land to be vested in the Whakatōhea Treaty Settlement:

Shown	Description	Estate Records	Area
Section 1	Section 5 Block I Waioeka SD, Section 3 Block V Waioeka SD, Section 4 Block V Waioeka SD	New Zealand Gazette 1974 p 1403, GN 113096.1, New Zealand Gazette 1966 p 1554	26.8568 ha
Section 2	Section 4 Block V Waioeka SD	New Zealand Gazette 1974 p 1403, GN 113096.1	1.6212 ha

### Land to transfer in the Whakatōhea Treaty Settlement:

Shown	Description	Estate Records	Area
Section 3	Section 5 Block I Waioeka SD	New Zealand Gazette 1974 p 1403, GN 113096.1	2.479 ha
Section 4	Section 4 Block V Waioeka SD	New Zealand Gazette 1974 p 1403, GN 113096.1	3.5218 ha

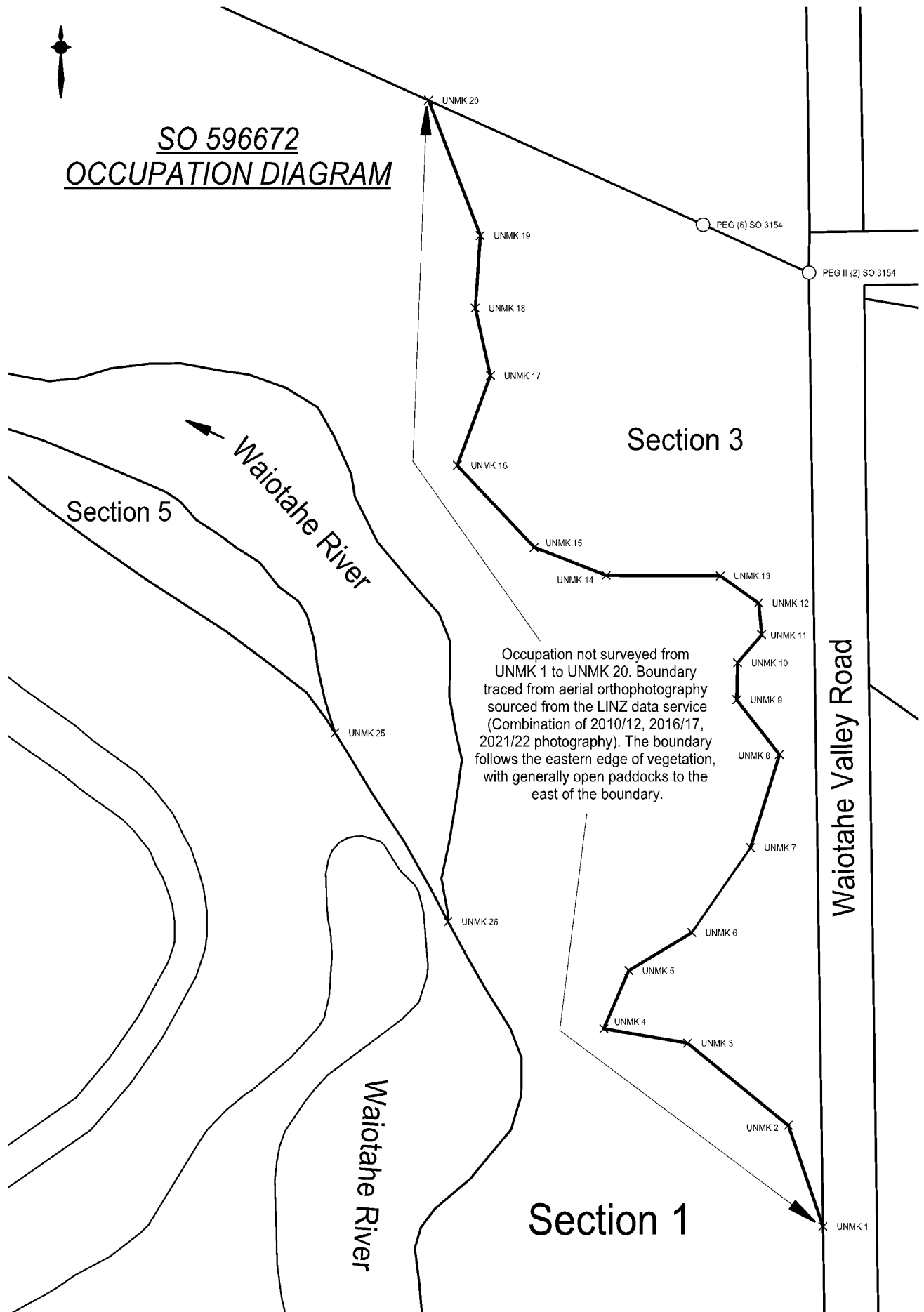
### To remain as Crown Land:

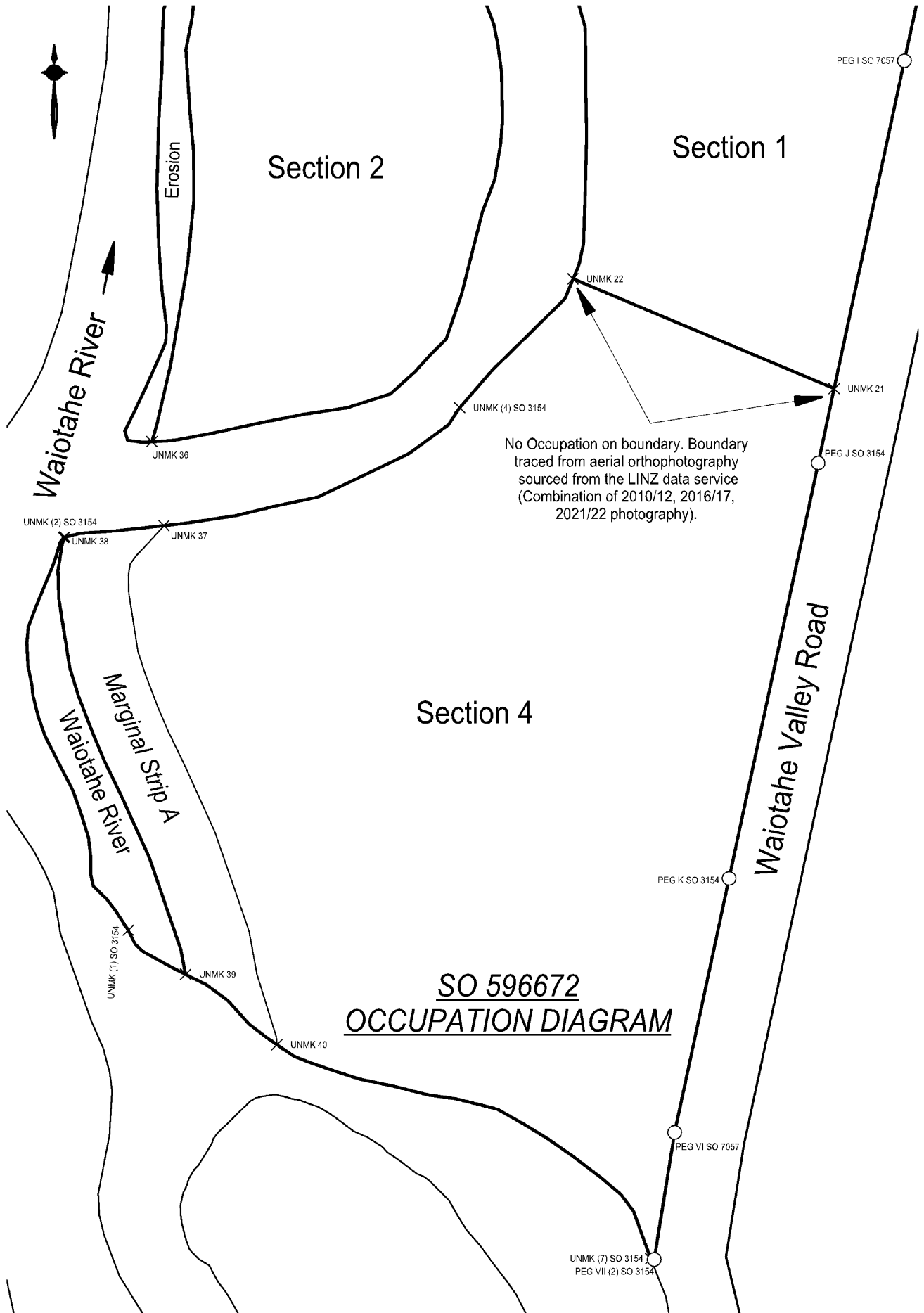
Shown	Description	Estate Records	Area
Section 5	Section 5 Block I Waioeka SD	New Zealand Gazette 1974 p 1403, GN 113096.1	0.4189 ha
Section 6	Section 3 Block V Waioeka SD	New Zealand Gazette 1966 p 1554	0.2126 ha

# Occupation Diagram



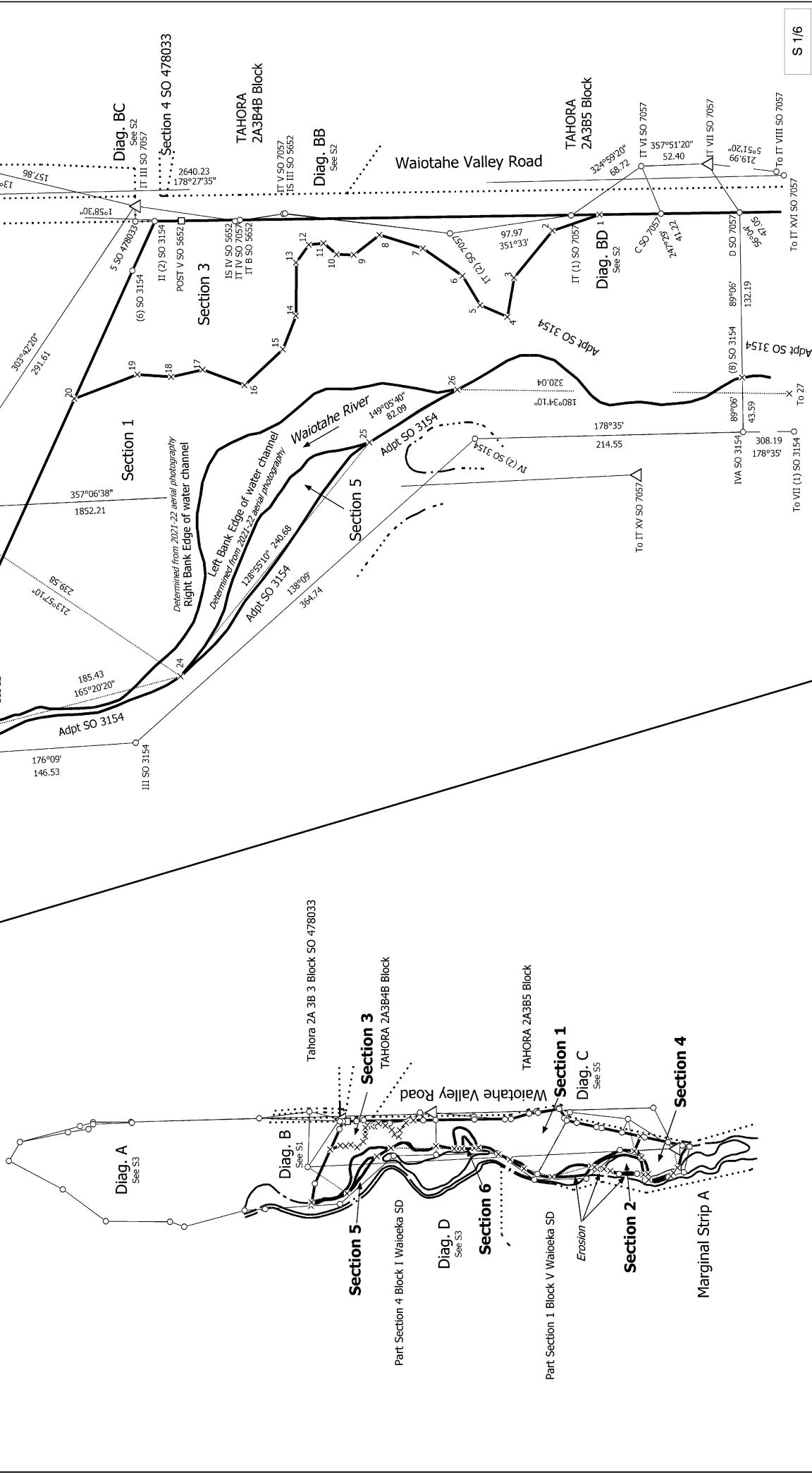
## SO 596672 OCCUPATION DIAGRAM







Note: In the areas where there has been  
avulsion there are no claims for the dry river bed.



S 1/6

Record of Survey  
SO 596672  
Approved on: 19/03/2024

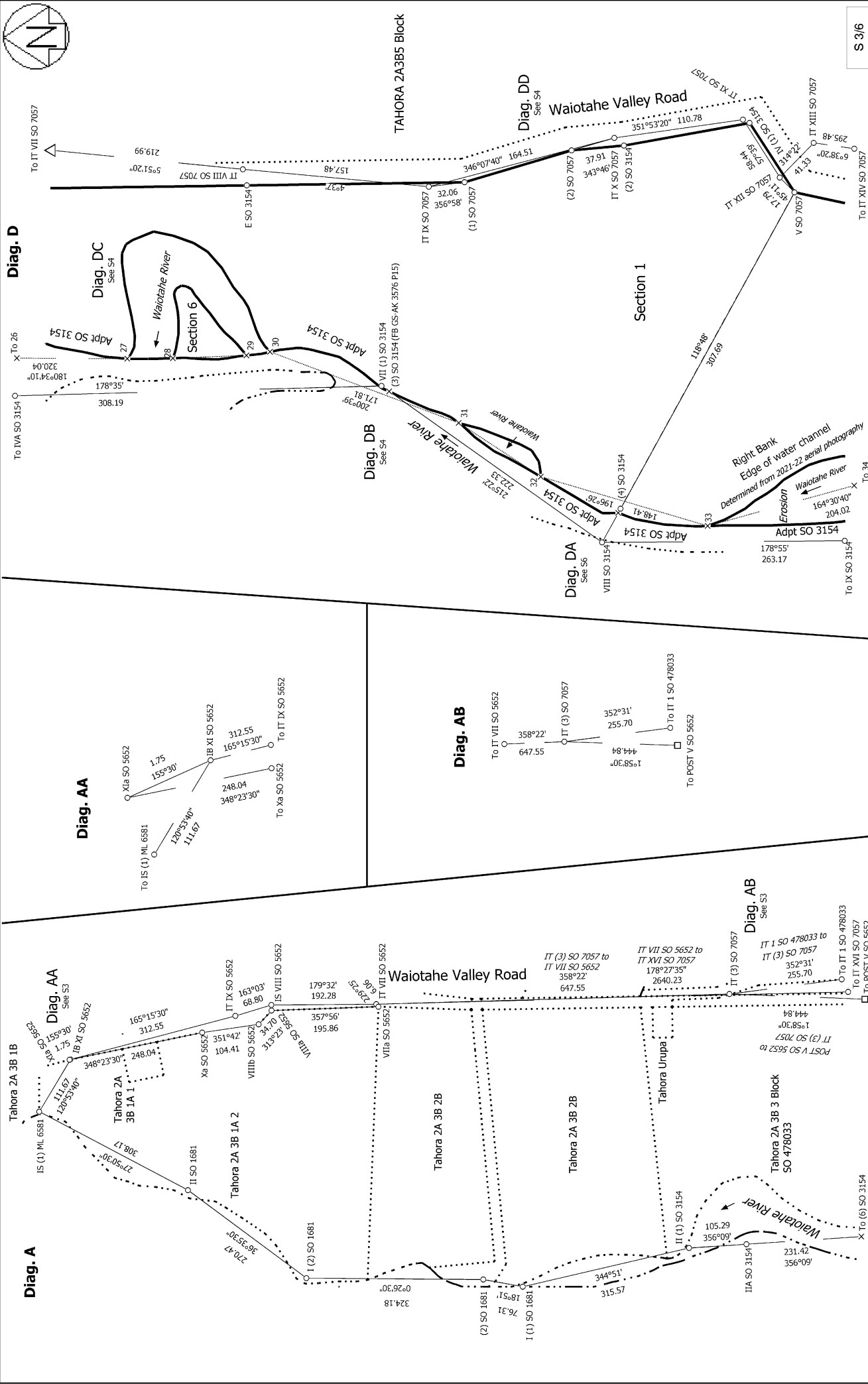
Surveyor: Alan Michael Kane  
Firm: WSP New Zealand Limited (New Ply)  
Date of Survey: 8/12/2023

Sections 1-6 and Marginal Strip A

Land District: Gisborne

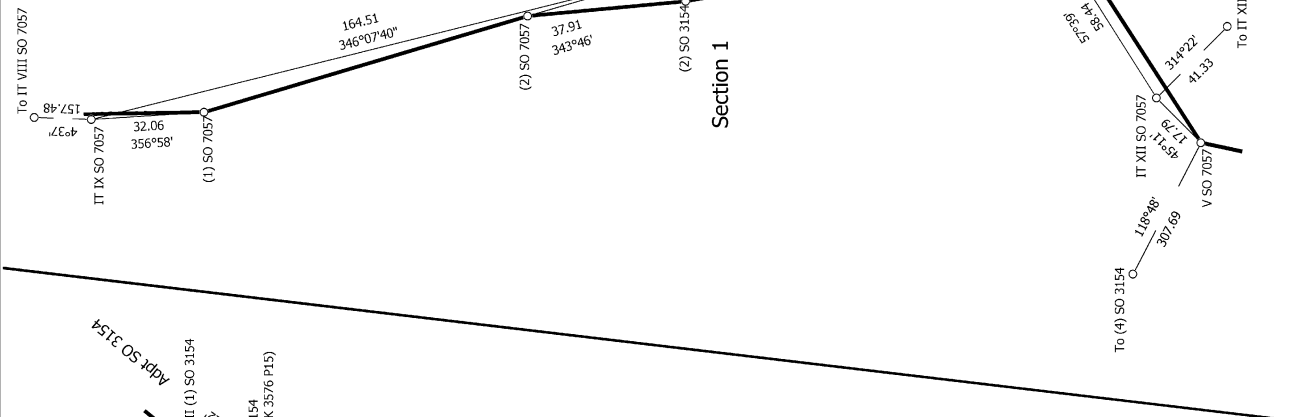
Digitally Generated Plan  
Generated on: 19/03/2024 4:31pm Page 13 of 21







Diag. DD

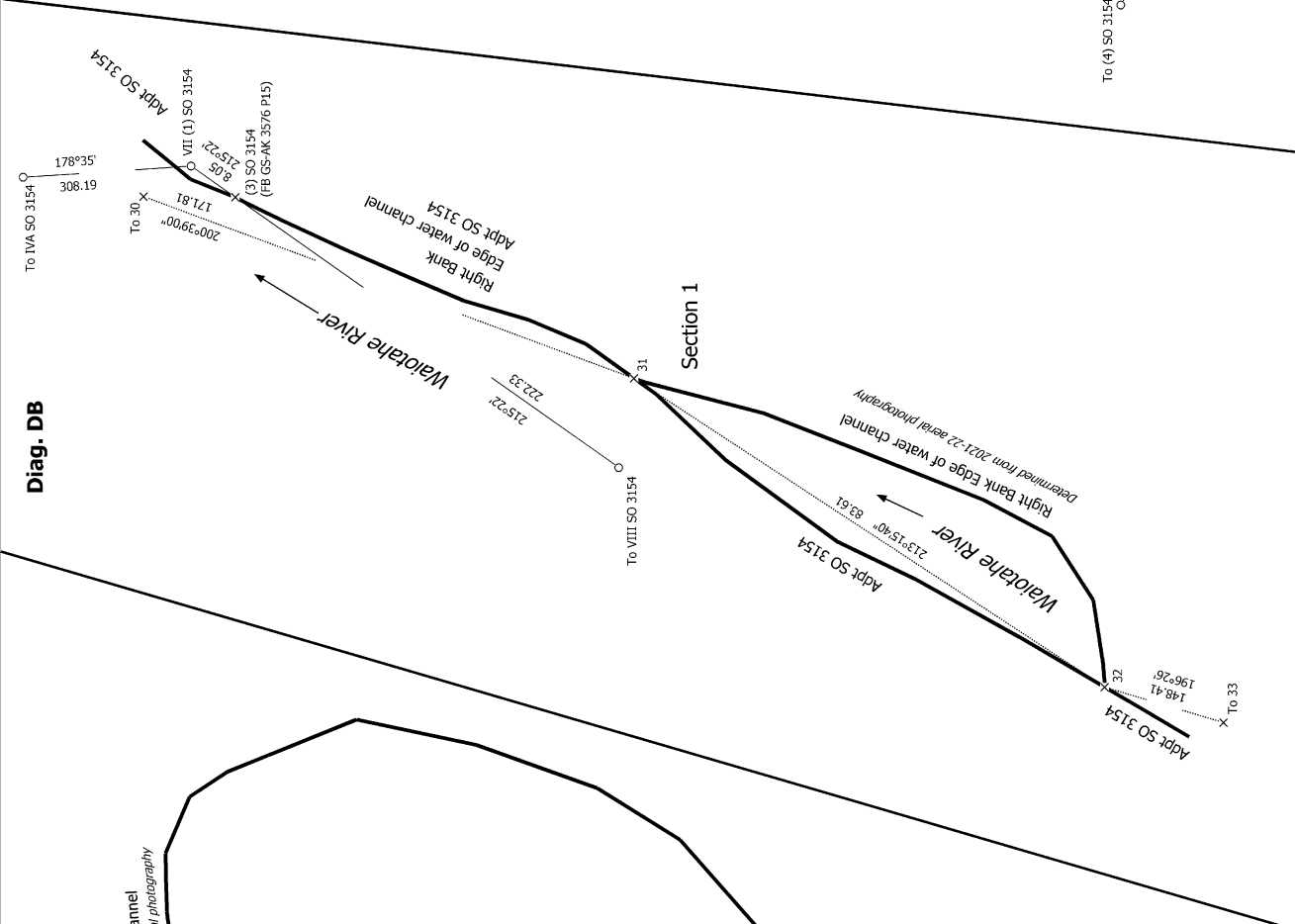


S 4/6

Record of Survey  
 SO 596672  
 Approved on: 19/03/2024

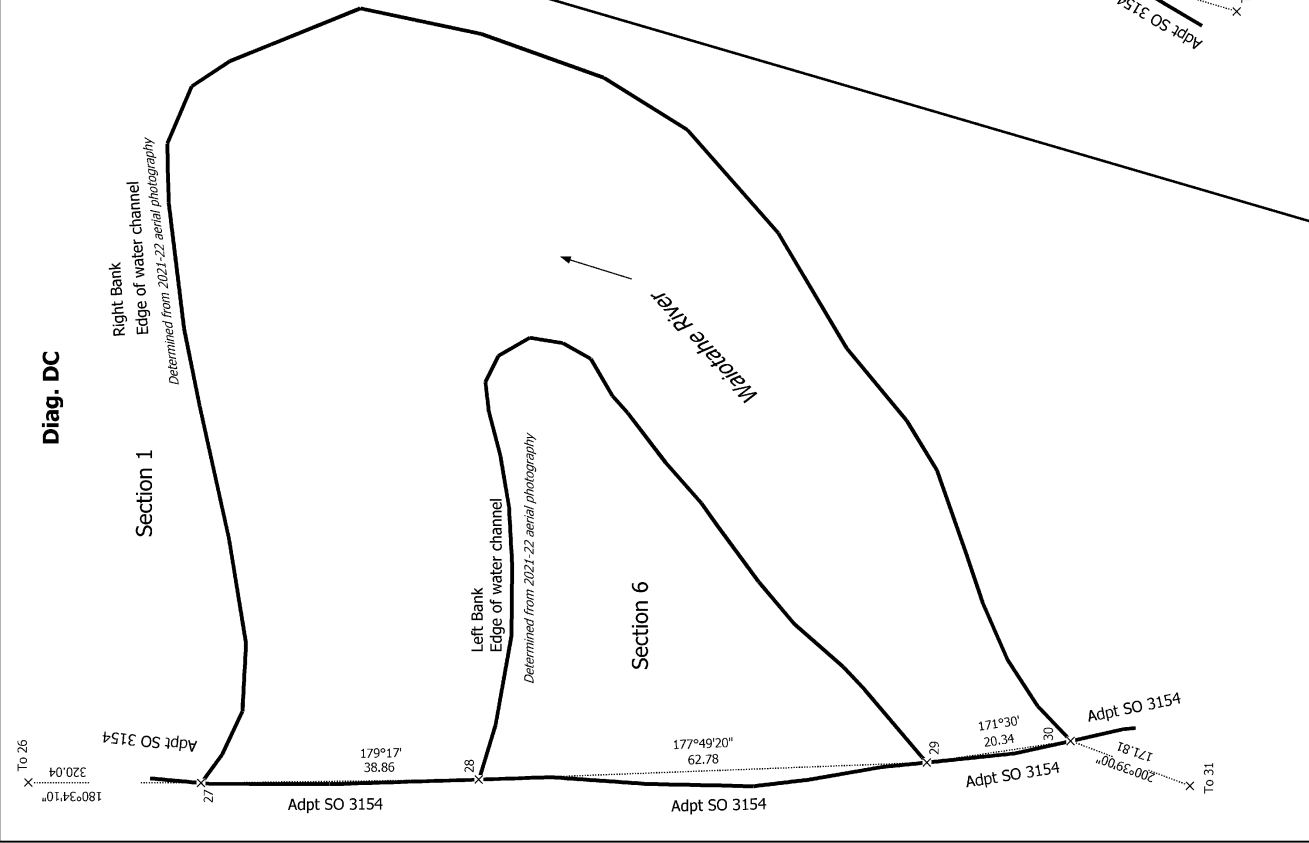
Surveyor: Alan Michael Kane  
 Firm: WSP New Zealand Limited (New Ply)  
 Date of Survey: 8/12/2023

Diag. DB



Sections 1-6 and Marginal Strip A

Diag. DC



Land District: Gisborne

Digitally Generated Plan  
 Generated on: 19/03/2024 4:31pm Page 16 of 21



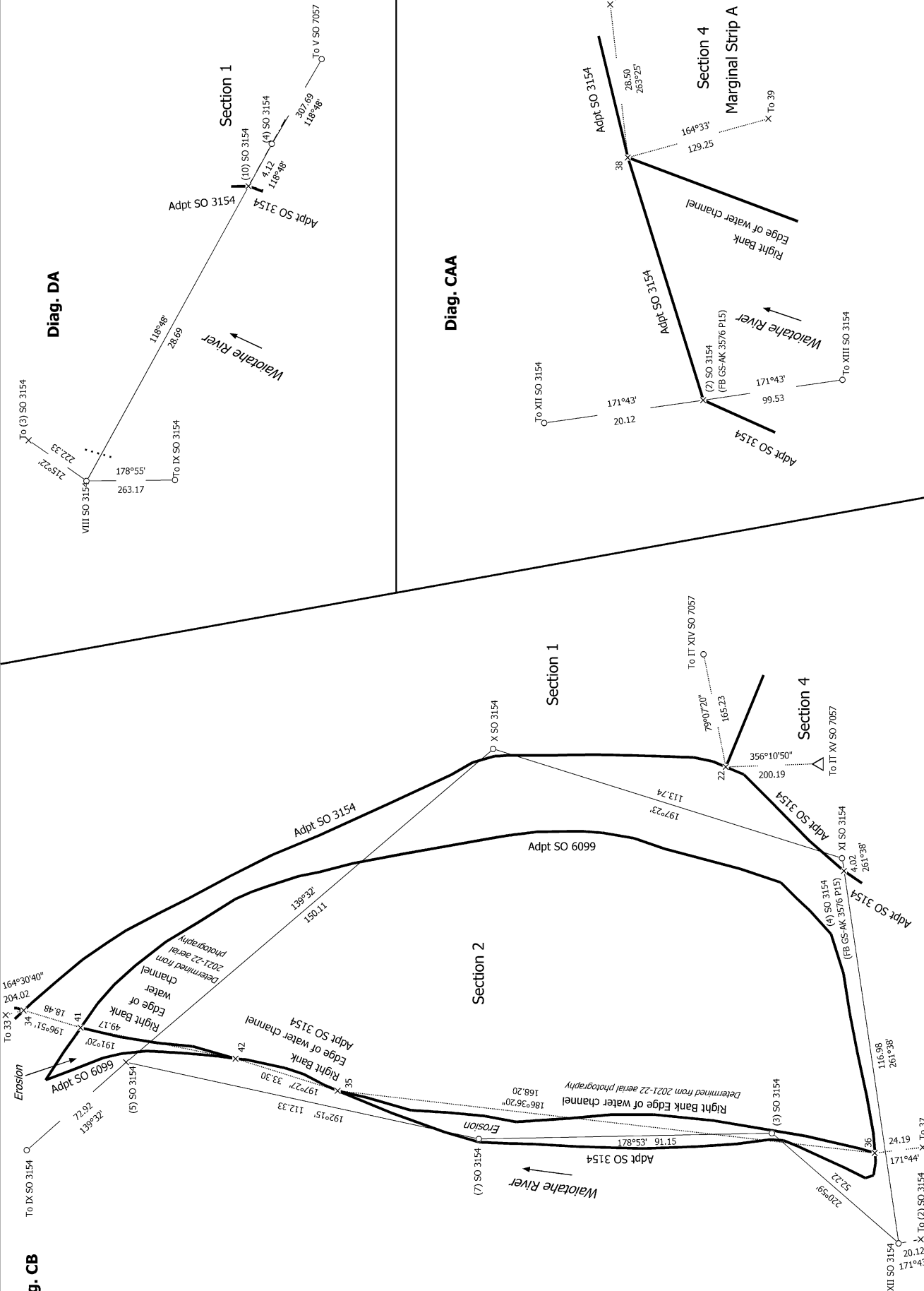




Diag. CB

Diag. DA

Diag. CAA



S 6/6

Land District: Gisborne

Sections 1-6 and Marginal Strip A

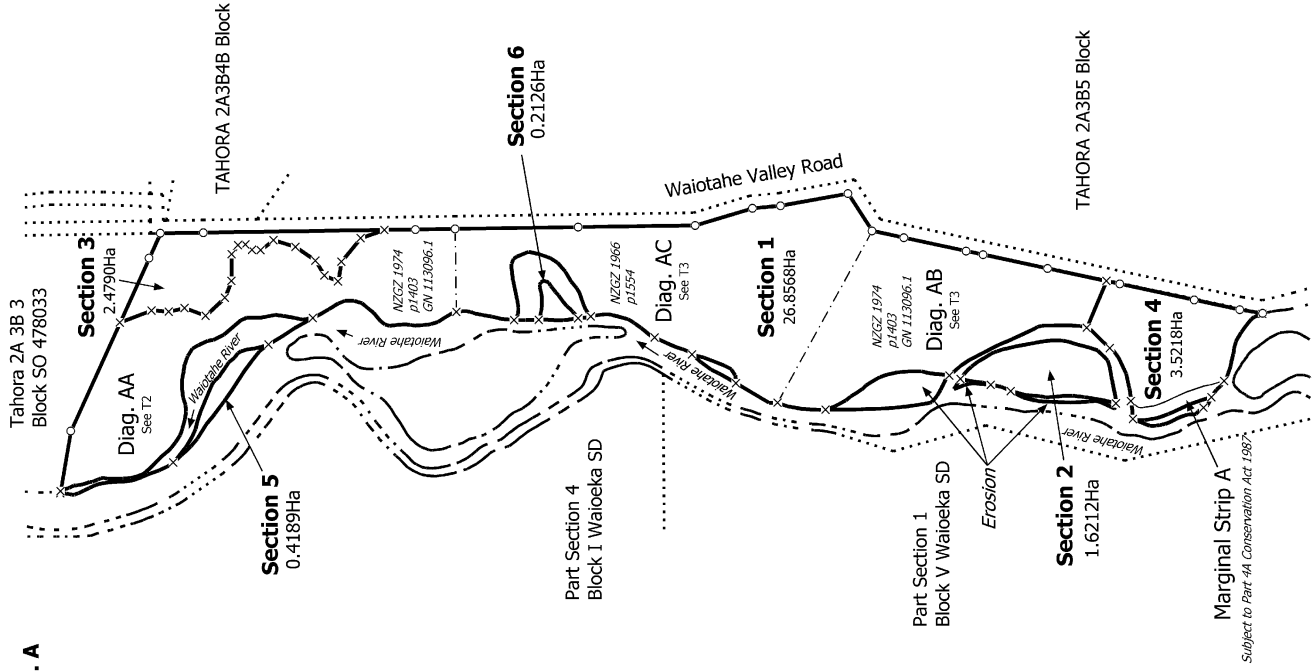
Surveyor: Alan Michael Kane  
 Firm: WSP New Zealand Limited (New Ply)  
 Date of Survey: 8/12/2023

Record of Survey  
 SO 596672  
 Approved on: 19/03/2024

Digitally Generated Plan  
 Generated on: 19/03/2024 4:31pm Page 18 of 21



**Diag. A**

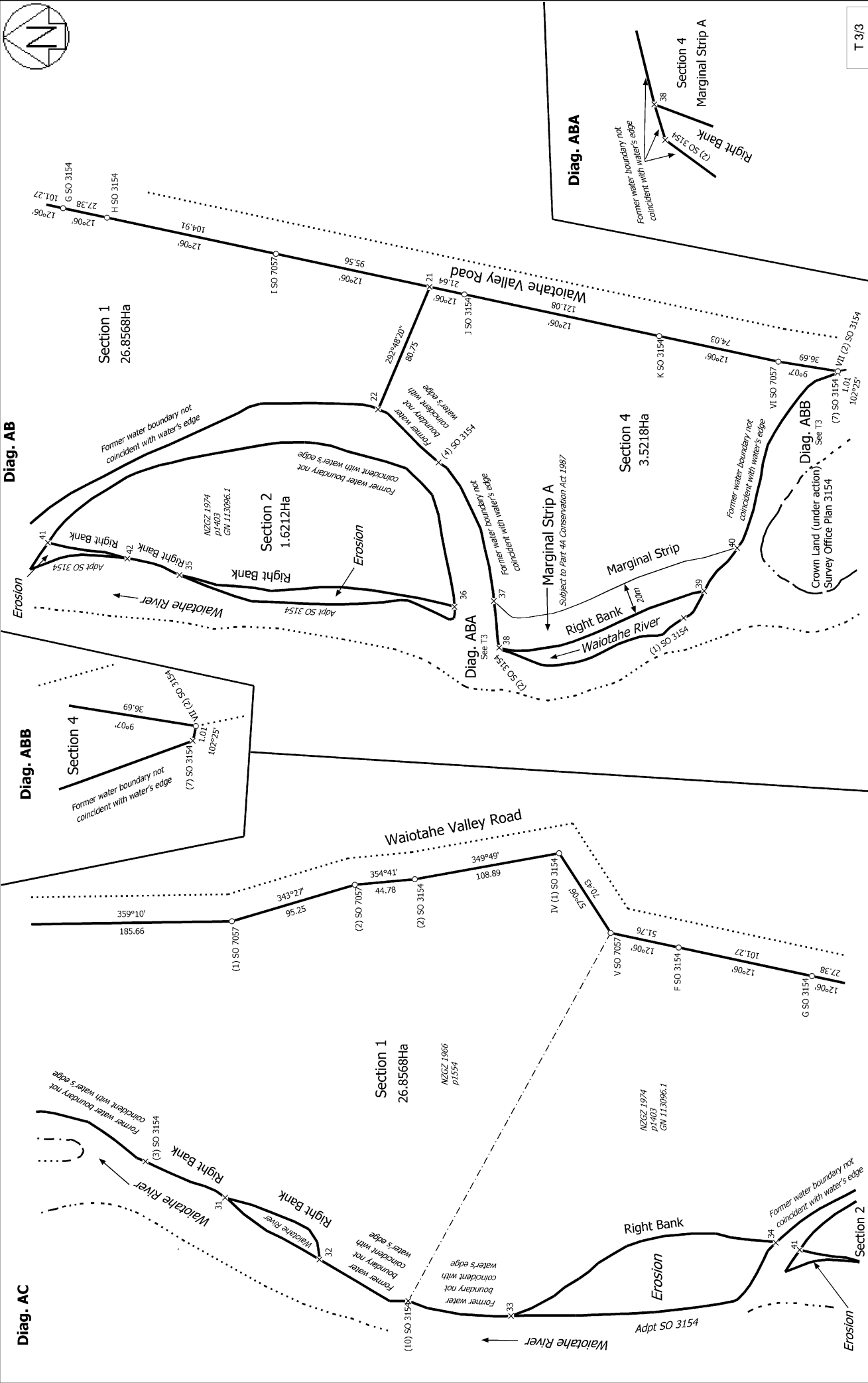


**Notes:**

- Sections 1 and 2 to vest in fee simple subject to scenic reserve status.
- Pursuant to a provision in the claims settlement Act, section 11 and Part 10 of the Resource Management Act 1991 do not apply.
- The vesting of Sections 1 - 2 and the transfer of Sections 3 - 4 is a disposition for the purposes of part 4A of the Conservation Act 1987.

*Note: In the areas where there has been avulsion there are no claims for the dry river bed.*





T 3/3

Record of Survey  
SO 596672  
Approved on: 19/03/2024

Surveyor: Alan Michael Kane  
Firm: WSP New Zealand Limited (New Ply)  
Date of Survey: 8/12/2023

Sections 1-6 and Marginal Strip A

Land District: Gisborne

**Digitally Generated Plan**  
Generated on: 19/03/2024 4:31pm Page 21 of 21