



Record of Survey - SO 542753

Survey Number SO 542753
Surveyor Reference 60075 WDC Paterangi Rd - Rushbrooke
Surveyor Rhys James Kelly
Survey Firm Nicklin CE RPC Ltd
Surveyor Declaration I Rhys James Kelly, being a licensed cadastral surveyor, certify that--
(a) this dataset provided by me and its related survey are accurate, correct and in accordance with the Cadastral Survey Act 2002 and Cadastral Survey Rules 2021; and
(b) the survey was undertaken by me or under my personal direction.
Declared on 09 Jul 2024 04:51 PM

Survey Details

Dataset Description	Sections 1 - 5		
Purpose	Legalisation		
Status	Approved as to Survey	Type	Survey
Land District	South Auckland	Survey Class	Class B
Meridional Circuit	Mount Eden 2000	Vertical Datum	None

Survey Dates

Surveyed Date	23/04/2024	Certified Date	09/07/2024
Submitted Date	09/07/2024 16:51:32	Survey Approval Date	10/07/2024
Deposit Date			

Referenced Surveys

Survey Number	Land District	Bearing Correction
DP 20888	South Auckland	
DP 8025	South Auckland	0°00'00"
DPS 62851	South Auckland	
SO 21552	South Auckland	0°00'00"
SO 33912	South Auckland	0°00'00"
SO 47655	South Auckland	0°00'00"
DPS 92516	South Auckland	
DPS 92145	South Auckland	0°00'00"
SO 420476	South Auckland	
DP 495818	South Auckland	
SO 524268	South Auckland	
DP 453522	South Auckland	0°00'00"
DP 30465	South Auckland	
SO 48371	South Auckland	0°00'00"
DPS 20155	South Auckland	0°00'00"
DPS 4514	South Auckland	0°00'00"
DP 422113	South Auckland	0°00'00"
SO 57533	South Auckland	0°00'00"
DPS 21105	South Auckland	0°00'00"



Record of Survey - SO 542753

Territorial Authorities

Waipa District

Comprised In

RT SA15B/1092

Created Parcels

Parcels	Parcel Intent	Area	RT Reference
Section 1 Survey Office Plan 542753	Legalisation	0.5734 Ha	
Section 2 Survey Office Plan 542753	Legalisation	0.3765 Ha	
Section 3 Survey Office Plan 542753	Legalisation	4.7937 Ha	
Section 4 Survey Office Plan 542753	Legalisation	0.5885 Ha	
Section 5 Survey Office Plan 542753	Fee Simple Title	2.7444 Ha	
	Hydro		
	Hydro		
Total Area		<hr/> 9.0765 Ha	

Mark and Vector

Survey Number SO 542753

Meridional Circuit Mount Eden 2000

From	To	Code	Bearing	Adpt Surv	Bearing Correction	Distance	Adpt Surv	Class
IB VII DPS 92145	IB VIII DPS 92145	ob0	332°11'00"	A DPS 92145	0°00'00"	289.80 A	DPS 92145	
IB VII DPS 92145	IS VI DPS 92145	ob1	83°00'20"	A DPS 92145	0°00'00"	189.68 A	DPS 92145	
IS VI DPS 92145	IT VIII DPS 21105	ob6	18°05'00"	A DPS 92145	0°00'00"	123.37 A	DPS 92145	
IT VIII DPS 21105	IS V DPS 92145	ob7	38°00'10"	A DPS 92145	0°00'00"	149.15 A	DPS 92145	
IS V DPS 92145	IB IV DPS 92145	ob11	98°17'50"	A DPS 92145	0°00'00"	171.07 A	DPS 92145	
IB IV DPS 92145	IS III DPS 92145	ob15	146°56'10"	A DPS 92145	0°00'00"	141.54 A	DPS 92145	
IS III DPS 92145	IB II DPS 92145	ob16	134°35'30"	A DPS 92145	0°00'00"	190.22 A	DPS 92145	
IB II DPS 92145	SS 83 SO 28890	ob17	193°57'20"	A DPS 92145	0°00'00"	121.03 A	DPS 92145	
UNMARKED (30) DPS 92145	AD 1B SO 542753	ob18	59°37'00"	C		21.80 C		Class B
UNMARKED (30) DPS 92145	UNMARKED (31) DPS 92145	ob19	340°57'00"	A DPS 92145	0°00'00"	34.87 A	DPS 92145	Class B
UNMARKED (31) DPS 92145	UNMARKED (32) DPS 92145	ob20	261°55'00"	A DPS 92145	0°00'00"	24.91 A	DPS 92145	Class B
UNMARKED (32) DPS 92145	UNMARKED (33) DPS 92145	ob21	295°11'00"	A DPS 92145	0°00'00"	20.14 A	DPS 92145	Class B
UNMARKED (33) DPS 92145	UNMARKED (34) DPS 92145	ob22	324°37'00"	A DPS 92145	0°00'00"	22.49 A	DPS 92145	Class B
UNMARKED (34) DPS 92145	UNMARKED (35) DPS 92145	ob23	359°27'00"	A DPS 92145	0°00'00"	23.77 A	DPS 92145	Class B
UNMARKED (35) DPS 92145	UNMARKED (36) DPS 92145	ob24	319°57'00"	A DPS 92145	0°00'00"	24.22 A	DPS 92145	Class B
UNMARKED (36) DPS 92145	UNMARKED (37) DPS 92145	ob25	332°10'00"	A DPS 92145	0°00'00"	21.76 A	DPS 92145	Class B
UNMARKED (37) DPS 92145	UNMARKED (38) DPS 92145	ob26	73°00'00"	A DPS 92145	0°00'00"	29.20 A	DPS 92145	Class B
UNMARKED (38) DPS 92145	UNMARKED (39) DPS 92145	ob27	80°04'00"	A DPS 92145	0°00'00"	20.14 A	DPS 92145	Class B
UNMARKED (39) DPS 92145	UNMARKED (40) DPS 92145	ob28	91°27'00"	A DPS 92145	0°00'00"	40.68 A	DPS 92145	Class B
UNMARKED (40) DPS 92145	UNMARKED (41) DPS 92145	ob29	102°43'00"	A DPS 92145	0°00'00"	21.38 A	DPS 92145	Class B
UNMARKED (41) DPS 92145	UNMARKED (42) DPS 92145	ob30	78°03'00"	A DPS 92145	0°00'00"	23.16 A	DPS 92145	Class B
UNMARKED (42) DPS 92145	UNMARKED (43) DPS 92145	ob31	6°43'00"	A DPS 92145	0°00'00"	11.09 A	DPS 92145	Class B
UNMARKED (43) DPS 92145	UNMARKED (44) DPS 92145	ob32	17°54'00"	A DPS 92145	0°00'00"	42.97 A	DPS 92145	Class B
UNMARKED (44) DPS 92145	UNMARKED (45) DPS 92145	ob33	72°16'00"	A DPS 92145	0°00'00"	27.12 A	DPS 92145	Class B
UNMARKED (45) DPS 92145	UNMARKED (46) DPS 92145	ob34	54°19'00"	A DPS 92145	0°00'00"	18.40 A	DPS 92145	Class B

Mark and Vector

Survey Number SO 542753

Meridional Circuit Mount Eden 2000

From	To	Code	Bearing	Adpt Surv	Bearing Correction	Distance	Adpt Surv	Class
UNMARKED (46) DPS 92145	UNMARKED (47) DPS 92145	ob35	35°36'00"	A DPS 92145	0°00'00"	20.14 A	DPS 92145	Class B
UNMARKED (47) DPS 92145	UNMARKED (48) DPS 92145	ob36	55°09'00"	A DPS 92145	0°00'00"	21.00 A	DPS 92145	Class B
UNMARKED (48) DPS 92145	UNMARKED (49) DPS 92145	ob37	23°02'00"	A DPS 92145	0°00'00"	25.77 A	DPS 92145	Class B
UNMARKED (49) DPS 92145	UNMARKED (50) DPS 92145	ob38	57°45'00"	A DPS 92145	0°00'00"	19.57 A	DPS 92145	Class B
UNMARKED (50) DPS 92145	UNMARKED (51) DPS 92145	ob39	102°42'00"	A DPS 92145	0°00'00"	53.51 A	DPS 92145	Class B
UNMARKED (51) DPS 92145	UNMARKED (52) DPS 92145	ob40	85°03'00"	A DPS 92145	0°00'00"	23.21 A	DPS 92145	Class B
UNMARKED (52) DPS 92145	UNMARKED (53) DPS 92145	ob41	42°22'00"	A DPS 92145	0°00'00"	14.23 A	DPS 92145	Class B
UNMARKED (53) DPS 92145	UNMARKED (54) DPS 92145	ob42	12°38'00"	A DPS 92145	0°00'00"	11.47 A	DPS 92145	Class B
UNMARKED (54) DPS 92145	UNMARKED (55) DPS 92145	ob43	26°35'00"	A DPS 92145	0°00'00"	25.69 A	DPS 92145	Class B
UNMARKED (55) DPS 92145	UNMARKED (56) DPS 92145	ob44	7°37'00"	A DPS 92145	0°00'00"	53.30 A	DPS 92145	Class B
UNMARKED (56) DPS 92145	PEG (1) SO 47655	ob45	10°06'00"	A DPS 92145	0°00'00"	7.65 A	DPS 92145	Class B
PEG (1) SO 47655	PEG (2) SO 47655	ob46	187°02'20"	A SO 47655	0°00'00"	95.39 A	SO 47655	Class B
PEG (2) SO 47655	PEG (57) DPS 92145	ob47	186°18'30"	A SO 47655	0°00'00"	51.34 A	DPS 92145	Class B
PEG (57) DPS 92145	PEG (3) SO 47655	ob48	186°18'30"	A SO 47655	0°00'00"	29.39 A	DPS 92145	Class B
PEG (3) SO 47655	PEG (4) SO 47655	ob49	164°57'10"	A SO 47655	0°00'00"	105.47 A	SO 47655	Class B
PEG (4) SO 47655	PEG 77 SO 542753	ob50	192°10'40"	A SO 47655	0°00'00"	76.38 C		Class B
PEG 77 SO 542753	PEG (5) SO 47655	ob103	192°10'40"	A SO 47655	0°00'00"	31.77 C		Class B
PEG (5) SO 47655	UNMARKED (6) SO 47655	ob51	192°10'40"	A SO 47655	0°00'00"	10.06 A	SO 47655	Class B
PEG V SO 21552	PEG (2) DPS 62851	ob53	294°58'00"	A SO 33912	0°00'00"	9.19 A	SO 33912	Class B
PEG (2) DPS 62851	IT (1) SO 33912	ob54	198°02'00"	A SO 33912	0°00'00"	6.08 A	SO 33912	
IT (1) SO 33912	IB (1) SO 33912	ob56	18°38'30"	A DPS 4514	0°00'00"	50.76 A	DPS 4514	
PEG (2) DPS 62851	PEG (1) SO 33912	ob55	18°02'00"	A SO 33912	0°00'00"	43.84 A	SO 33912	Class B
PEG (1) SO 33912	PEG (2) SO 33912	ob58	43°22'00"	A SO 33912	0°00'00"	75.46 A	SO 33912	Class B
PEG (2) SO 33912	PEG (3) SO 33912	ob59	321°15'30"	A SO 33912	0°00'00"	327.82 A	SO 33912	Class B

Mark and Vector

Survey Number SO 542753

Meridional Circuit Mount Eden 2000

From	To	Code	Bearing	Adpt Surv	Bearing Correction	Distance	Adpt Surv	Class
PEG (3) SO 33912	PEG XV DP 8025	ob60	53°59'00"	A DP 8025	0°00'00"	201.17 A	DP 8025	
PEG XV DP 8025	PEG XVI DP 8025	ob62	185°19'00"	A DP 8025	0°00'00"	220.16 A	DP 8025	
PEG XVI DP 8025	IS (1) SO 33912	ob63	134°47'00"	A SO 33912	0°00'00"	41.58 A	SO 33912	
IS (1) SO 33912	PEG II SO 21552	ob64	130°24'00"	A SO 33912	0°00'00"	85.09 A	SO 33912	
PEG II SO 21552	PEG III SO 21552	ob66	198°06'00"	A SO 21552	0°00'00"	81.88 A	SO 21552	Class B
PEG III SO 21552	IB (1) SO 33912	ob67	230°40'00"	A SO 33912	0°00'00"	73.73 A	SO 33912	
PEG III SO 21552	PEG IV SO 21552	ob68	223°41'00"	A SO 21552	0°00'00"	72.06 A	SO 21552	Class B
PEG IV SO 21552	PEG V SO 21552	ob70	198°02'00"	A SO 21552	0°00'00"	42.87 A	SO 21552	Class B
PEG (3) SO 33912	PEG 82 SO 542753	ob61	321°15'30"	A SO 33912	0°00'00"	26.15 A	SO 33912	Class B
PEG 82 SO 542753	PEG 81 SO 542753	ob71	65°39'00"	C		7.05 C		Class B
PEG 81 SO 542753	UNMK 84 SO 542753	ob108	75°03'00"	C		17.98 C		Class B
UNMK 84 SO 542753	UNMK 85 SO 542753	ob119	70°09'00"	C		12.34 C		Class B
UNMK 85 SO 542753	UNMK 86 SO 542753	ob120	63°21'00"	C		14.79 C		Class B
UNMK 86 SO 542753	UNMK 87 SO 542753	ob121	53°17'00"	C		6.22 C		Class B
UNMK 87 SO 542753	UNMK (7) DP 8025	ob122	46°56'00"	C		5.30 C		Class B
UNMK (7) DP 8025	UNMK (8) DP 8025	ob73	57°10'00"	C		6.00 C		Class B
UNMK (8) DP 8025	UNMK (9) DP 8025	ob123	60°48'00"	C		14.23 C		Class B
UNMK (9) DP 8025	PEG 69 SO 542753	ob74	59°41'00"	C		16.23 C		Class B
PEG 69 SO 542753	UNMK (10) DP 8025	ob106	59°41'00"	C		4.05 C		Class B
UNMK (10) DP 8025	UNMK (11) DP 8025	ob75	62°29'00"	C		20.34 C		Class B
UNMK (11) DP 8025	UNMK (12) DP 8025	ob76	62°31'00"	C		20.34 C		Class B
UNMK (12) DP 8025	UNMK (13) DP 8025	ob77	25°11'00"	C		22.96 C		Class B
UNMK (13) DP 8025	UNMK (14) DP 8025	ob78	15°19'00"	C		25.77 C		Class B
UNMK (14) DP 8025	UNMK (15) DP 8025	ob79	58°40'00"	C		9.14 C		Class B

Mark and Vector

Survey Number SO 542753

Meridional Circuit Mount Eden 2000

From	To	Code	Bearing	Adpt Surv	Bearing Correction	Distance	Adpt Surv	Class
UNMK (15) DP 8025	UNMK (16) DP 8025	ob80	10°21'00"	C		21.00 C		Class B
UNMK (16) DP 8025	UNMK (17) DP 8025	ob81	22°29'00"	C		22.96 C		Class B
UNMK (17) DP 8025	UNMK (18) DP 8025	ob82	359°22'00"	C		20.22 C		Class B
UNMK (18) DP 8025	UNMK (19) DP 8025	ob83	350°48'00"	C		20.15 C		Class B
UNMK (19) DP 8025	UNMK (20) DP 8025	ob84	60°13'00"	C		6.58 C		Class B
UNMK (20) DP 8025	UNMK (21) DP 8025	ob85	152°35'00"	C		2.81 C		Class B
UNMK (21) DP 8025	UNMK (22) DP 8025	ob86	165°09'00"	C		20.34 C		Class B
UNMK (22) DP 8025	UNMK (23) DP 8025	ob87	154°23'00"	C		21.32 C		Class B
UNMK (23) DP 8025	UNMK (24) DP 8025	ob88	173°40'00"	C		20.12 C		Class B
UNMK (24) DP 8025	UNMK (25) DP 8025	ob89	173°40'00"	C		20.12 C		Class B
UNMK (26) DP 8025	UNMK (27) DP 8025	ob156	190°41'00"	C		19.21 C		Class B
UNMK (27) DP 8025	UNMK (28) DP 8025	ob91	196°39'00"	C		20.52 C		Class B
UNMK (28) DP 8025	PEG 75 SO 542753	ob92	191°01'40"	C		15.44 C		Class B
PEG 75 SO 542753	UNMK (29) DP 8025	ob109	191°01'40"	A DP 8025	0°00'00"	65.44 A DP 8025		Class B
UNMK (29) DP 8025	UNMK (30) DP 8025	ob93	185°19'00"	A DP 8025	0°00'00"	10.06 A DP 8025		Class B
UNMK (30) DP 8025	UNMK (31) DP 8025	ob94	193°51'00"	A DP 8025	0°00'00"	20.35 A DP 8025		Class B
UNMK (31) DP 8025	UNMK 83 SO 542753	ob95	175°49'00"	A DP 8025	0°00'00"	18.00 A DP 8025		Class BD
UNMK 83 SO 542753	UNMK (33) DP 8025	ob112	175°49'00"	A DP 8025	0°00'00"	12.60 A DP 8025		
UNMK (41) SO 33912	PEG II SO 21552	ob97	198°06'00"	A SO 33912	0°00'00"	16.09 A SO 33912		Class BD
PEG 82 SO 542753	AD 1B SO 542753	ob72	319°16'00"	C		39.14 C		Class B
AD 1B SO 542753	AD 1A SO 542753	ob98	17°00'00"	C		39.17 C		Class B
AD 1A SO 542753	AD 3C SO 542753	ob99	107°55'00"	C		26.98 C		Class B
AD 3C SO 542753	AD 3B SO 542753	ob100	116°04'00"	C		25.64 C		Class B
AD 3B SO 542753	AD 3A SO 542753	ob101	95°43'00"	C		36.31 C		Class B

Mark and Vector

Survey Number SO 542753

Meridional Circuit Mount Eden 2000

From	To	Code	Bearing	Adpt Surv	Bearing Correction	Distance	Adpt Surv	Class
AD 3A SO 542753	PEG 69 SO 542753	ob102	89°31'00"	C		18.21 C		Class B
PEG 69 SO 542753	AD 4A SO 542753	ob107	89°31'00"	C		45.42 C		Class B
AD 4A SO 542753	AD 5A SO 542753	ob104	74°30'00"	C		35.71 C		Class B
AD 5A SO 542753	PEG 75 SO 542753	ob105	122°56'00"	C		21.13 C		Class B
PEG 75 SO 542753	AD 5B SO 542753	ob110	122°56'00"	C		9.56 C		Class B
AD 5B SO 542753	PEG 77 SO 542753	ob111	145°36'00"	C		15.31 C		Class B
UNMK 83 SO 542753	AD 7E SO 542753	ob113	228°06'00"	C		9.54 C		Class BD
AD 7E SO 542753	AD 7D SO 542753	ob115	2°55'40"	C		81.53 C		Class B
AD 7D SO 542753	AD 7C SO 542753	ob117	308°55'00"	C		4.43 C		Class B
AD 7C SO 542753	PEG 81 SO 542753	ob118	267°59'00"	C		156.80 C		Class B
AD 7E SO 542753	UNMK (33) DP 8025	ob116	127°42'00"	C		10.13 C		
UNMK 83 SO 542753	PEG 75 SO 542753	ob114	8°38'20"	C		113.24 C		
UNMK (33) DP 8025	UNMK (41) SO 33912	ob96	141°05'20"	C		139.40 C		
IS V DPS 92145	AD 1B SO 542753	ob12	159°47'40"	M		55.65 M		
IS V DPS 92145	AD 1A SO 542753	ob13	115°42'00"	M		34.04 M		
IS V DPS 92145	IS XIX SO 47655	ob14	75°18'10"	M		306.33 M		
IS XIX SO 47655	IT 5 SO 542753	ob125	217°28'30"	M		120.48 M		
IT 5 SO 542753	IT 4 SO 542753	ob128	258°59'20"	M		54.00 M		
IT 4 SO 542753	IT 3 SO 542753	ob131	275°01'30"	M		84.00 M		
IT 3 SO 542753	IS V DPS 92145	ob134	283°35'20"	M		88.81 M		
IT VIII DPS 21105	IT 6 SO 542753	ob8	110°33'20"	M		253.64 M		
IT 6 SO 542753	IT 7 SO 542753	ob138	343°11'30"	M		121.29 M		
IT 7 SO 542753	IS 8 SO 542753	ob141	82°56'20"	M		94.20 M		
IS 8 SO 542753	IS V DPS 92145	ob145	291°08'10"	M		218.79 M		
IT VIII DPS 21105	RN 9 SO 542753	ob9	104°18'00"	M		21.92 M		
RN 9 SO 542753	IS V DPS 92145	ob146	29°51'50"	M		141.75 M		
IT VIII DPS 21105	RN 1 SO 542753	ob10	328°21'10"	M		252.74 M		

Mark and Vector

Survey Number SO 542753

Meridional Circuit Mount Eden 2000

From	To	Code	Bearing	Adpt Surv	Bearing Correction	Distance	Adpt Surv	Class
RN 1 SO 542753	SSP 9 DP 422113	ob147	94°15'50" M			975.43 M		
SSP 9 DP 422113	SSP 7 DP 422113	ob149	227°02'40" M			144.44 M		
SSP 7 DP 422113	SS 150 SO 57533	ob151	187°43'50" M			431.73 M		
SS 150 SO 57533	IB VII DPS 92145	ob153	285°04'35" M			935.09 M		
IB VII DPS 92145	RN 1 SO 542753	ob2	14°48'10" M			367.75 M		
IB VII DPS 92145	IS V DPS 21105	ob3	354°05'00" M			392.49 M		
IS V DPS 21105	RN 1 SO 542753	ob155	104°32'00" M			138.87 M		
IT 3 SO 542753	AD 3C SO 542753	ob135	265°49'00" M			30.06 M		
IT 3 SO 542753	AD 3B SO 542753	ob136	207°19'00" M			15.15 M		
IT 3 SO 542753	AD 3A SO 542753	ob137	120°20'00" M			33.81 M		
IT 4 SO 542753	AD 4A SO 542753	ob132	135°09'00" M			12.95 M		
IT 5 SO 542753	AD 5A SO 542753	ob129	223°33'00" M			13.73 M		
IT 5 SO 542753	AD 5B SO 542753	ob130	148°32'00" M			31.23 M		
IT 7 SO 542753	AD 7C SO 542753	ob142	80°05'00" M			98.78 M		
IT 7 SO 542753	AD 7D SO 542753	ob143	81°57'40" M			101.75 M		
IT 7 SO 542753	AD 7E SO 542753	ob144	124°49'40" M			117.66 M		
UNMK (25) DP 8025	UNMK (26) DP 8025	ob90	154°22'00" C			25.47 C		Class B
IT 5 SO 542753	PEG 75 SO 542753	ob126	158°53'00" M			22.98 M		
IT 5 SO 542753	PEG 77 SO 542753	ob127	147°34'00" M			46.53 M		
IT 7 SO 542753	PEG 82 SO 542753	ob139	277°26'20" M			66.38 M		
IT 7 SO 542753	PEG 81 SO 542753	ob140	280°57'20" M			60.50 M		
IT 3 SO 542753	PEG 69 SO 542753	ob133	109°39'00" M			50.32 M		
SSP 9 DP 422113	SSP 8 DP 422113	ob148	181°08'40" A	DP 422113	0°00'00"	74.31 A	DP 422113	
SSP 8 DP 422113	SSP 7 DP 422113	ob157	256°57'40" A	DP 422113	0°00'00"	106.99 A	DP 422113	

Mark and Vector

Survey Number SO 542753

Meridional Circuit Mount Eden 2000

From	To	Code	Bearing	Adpt Surv	Bearing Correction	Distance	Adpt Surv	Class
SSP 7 DP 422113	IB 6 DP 422113	ob150	262°44'40"	A DP 453522	0°00'00"	82.11 A	DP 453522	
IB 6 DP 422113	IS III SO 47655	ob158	348°42'30"	A DP 453522	0°00'00"	165.49 A	DP 453522	
IS III SO 47655	IB 1 DP 422113	ob159	162°40'40"	A DP 453522	0°00'00"	71.93 A	DP 453522	
IB 1 DP 422113	IT 2 DP 422113	ob162	58°30'30"	A DP 422113	0°00'00"	178.61 A	DP 422113	
IT 2 DP 422113	SSP 9 DP 422113	ob163	149°35'30"	A DP 422113	0°00'00"	90.58 A	DP 422113	
IS III SO 47655	IS II SO 47655	ob160	162°40'40"	A SO 47655	0°00'00"	157.13 A	SO 47655	
IS II SO 47655	IT II DPS 13969	ob165	162°40'40"	A SO 47655	0°00'00"	65.70 A	SO 47655	
IT II DPS 13969	IT I DPS 13969	ob166	163°12'40"	A SO 47655	0°00'00"	185.21 A	SO 47655	
IT I DPS 13969	IT II SO 48371	ob167	163°12'40"	A SO 47655	0°00'00"	24.92 A	SO 47655	
IT II SO 48371	IB 6 DP 422113	ob168	339°23'20"	A DP 422113	0°00'00"	268.79 A	DP 422113	
IT II SO 48371	IS III SO 48371	ob169	203°28'30"	A SO 48371	0°00'00"	37.43 A	SO 48371	
IS III SO 48371	IS IV SO 48371	ob170	203°28'30"	A SO 48371	0°00'00"	47.00 A	SO 48371	
IS IV SO 48371	IT V SO 48371	ob171	203°28'30"	A SO 48371	0°00'00"	97.08 A	SO 48371	
IT V SO 48371	SS 150 SO 57533	ob172	59°57'00"	A SO 48371	0°00'00"	1.22 A	SO 48371	
SS 150 SO 57533	SS 83 SO 28890	ob152	294°45'05"	A SO 57533	0°00'00"	255.18 A	SO 57533	
IB VIII DPS 92145	IT III DPS 20155	ob4	322°37'10"	A DPS 92145	0°00'00"	178.19 A	DPS 92145	
IT III DPS 20155	IT I DPS 20155	ob173	20°45'50"	A DPS 20155	0°00'00"	545.77 A	DPS 20155	
IT I DPS 20155	IT I DPS 21105	ob174	102°09'50"	A DPS 21105	0°00'00"	515.61 A	DPS 21105	
IT I DPS 21105	IT IV SO 47655	ob175	147°02'40"	A DPS 21105	0°00'00"	182.12 A	DPS 21105	
IT IV SO 47655	IB IX DPS 92145	ob176	136°32'40"	A DPS 92145	0°00'00"	84.10 A	DPS 92145	
IB IX DPS 92145	IS III SO 47655	ob177	136°32'40"	A DPS 92145	0°00'00"	343.29 A	DPS 92145	
IB VIII DPS 92145	IS V DPS 21105	ob5	35°15'00"	A DPS 92145	0°00'00"	164.20 A	DPS 92145	
IS V DPS 21105	IT XXX DPS 20155	ob154	333°07'40"	A DPS 92145	0°00'00"	172.27 A	DPS 92145	
IT XXX DPS 20155	IS VI DPS 21105	ob178	220°33'20"	A DPS 92145	0°00'00"	47.92 A	DPS 92145	
IS VI DPS 21105	IT III DPS 20155	ob179	220°33'20"	A DPS 92145	0°00'00"	144.46 A	DPS 92145	
IS III SO 47655	IS X DPS 92145	ob161	279°52'20"	A DPS 92145	0°00'00"	330.23 A	DPS 92145	
IS X DPS 92145	IB IX DPS 92145	ob180	24°51'40"	A DPS 92145	0°00'00"	212.25 A	DPS 92145	
IS X DPS 92145	IT XV SO 47655	ob181	40°39'00"	A DPS 92145	0°00'00"	111.16 A	DPS 92145	
IT XV SO 47655	IT IV SO 47655	ob182	346°23'00"	A DPS 92145	0°00'00"	174.19 A	DPS 92145	
IT XV SO 47655	IS XIV SO 47655	ob183	135°32'10"	A SO 47655	0°00'00"	50.11 A	SO 47655	
IS XIV SO 47655	IS XIX SO 47655	ob184	187°50'10"	A SO 47655	0°00'00"	107.10 A	SO 47655	
IS XIX SO 47655	IS XIII SO 47655	ob124	187°50'10"	A SO 47655	0°00'00"	75.72 A	SO 47655	
IS XIII SO 47655	IS XII SO 47655	ob164	195°23'30"	A SO 47655	0°00'00"	108.15 A	SO 47655	
IS XII SO 47655	IS XI SO 47655	ob185	185°08'20"	A SO 47655	0°00'00"	85.54 A	SO 47655	
IS XI SO 47655	IS X SO 47655	ob186	130°50'00"	A SO 47655	0°00'00"	232.33 A	SO 47655	

Mark and Vector

Survey Number SO 542753

Meridional Circuit Mount Eden 2000

From	To	Code	Bearing	Adpt Surv	Bearing Correction	Distance	Adpt Surv	Class
IS X SO 47655	IS IX SO 47655	ob187	60°14'50"	A SO 47655	0°00'00"	77.37 A	SO 47655	
IS IX SO 47655	PEG (1) SO 47655	ob188	69°22'50"	A SO 47655	0°00'00"	22.89 A	SO 47655	
PEG (1) SO 47655	IS VIII SO 47655	ob189	69°22'50"	A SO 47655	0°00'00"	48.74 A	SO 47655	
IS VIII SO 47655	IS VII SO 47655	ob190	139°33'50"	A SO 47655	0°00'00"	129.81 A	SO 47655	
IS VII SO 47655	IT I DPS 13969	ob191	4°20'30"	A SO 47655	0°00'00"	62.60 A	SO 47655	
IS (1) SO 33912	PEG III SO 21552	ob65	163°30'00"	A SO 33912	0°00'00"	138.64 A	SO 33912	
PEG III SO 21552	SS 83 SO 28890	ob69	109°43'30"	A SO 33912	0°00'00"	85.48 A	SO 33912	
IT VII DP 30465	SS 83 SO 28890	ob192	36°27'00"	A SO 33912	0°00'00"	127.24 A	SO 33912	
IT (1) SO 33912	IT VII DP 30465	ob57	114°58'00"	A SO 33912	0°00'00"	86.22 A	SO 33912	
UNMARKED (6) SO 47655	UNMK (33) DP 8025	ob52	199°58'20"	C		70.22 C		Class BD

Mark Name	Mark Condition	Description
IB IX DPS 92145		(0.8 off E. O. Seal)
IB VIII DPS 92145		(0.9 SE of 2 wire elec. fence)
IS V DPS 92145		Down 0.30m, 33.5m W of fence
IT 4 SO 542753		Down 0.25m, 9.30m N of fence
IT 7 SO 542753		Down 0.25m, 13.60m S of fence
IT XXX DPS 20155		(down 0.6 in race)
SS 83 SO 28890		N/A
SSP 8 DP 422113	Destroyed	
IS (1) SO 33912	Searched For and Not Found	
PEG (3) SO 33912	Searched For and Not Found	

*** End of Report ***

Area Schedule

Land Registration District

South Auckland

Plan Number

SO 542753

Territorial Authority (the Council)

Waipa District Council

Land for stream diversion

Shown	Description	Title Reference	Area
Section 1	(Part) Allotment 317 Mangapiko Parish	RT SA15B/1092	0.5734 ha
Section 2	(Part) Stream bed (Mangapiko Stream)		0.3765 ha

Land for stream diversion purposes

Shown	Description	Title Reference	Area
Section 3	(Part) Stream bed (Mangapiko Stream)		4.7937 ha
Section 4	(Part) Allotment 317 Mangapiko Parish	RT SA15B/1092	0.5885 ha

Balance parcel – Not under action

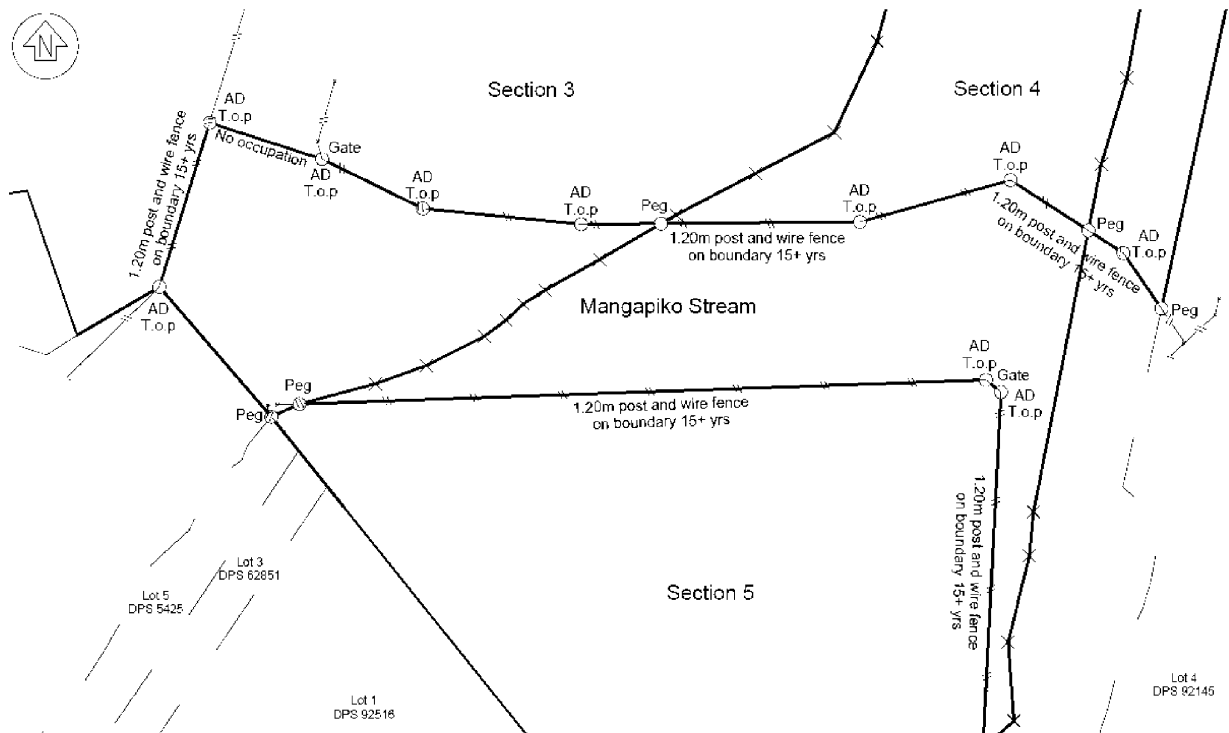
Shown	Description	Title Reference	Area
Section 5	(Part) Allotment 317 Mangapiko Parish	RT SA15B/1092	2.7444 ha

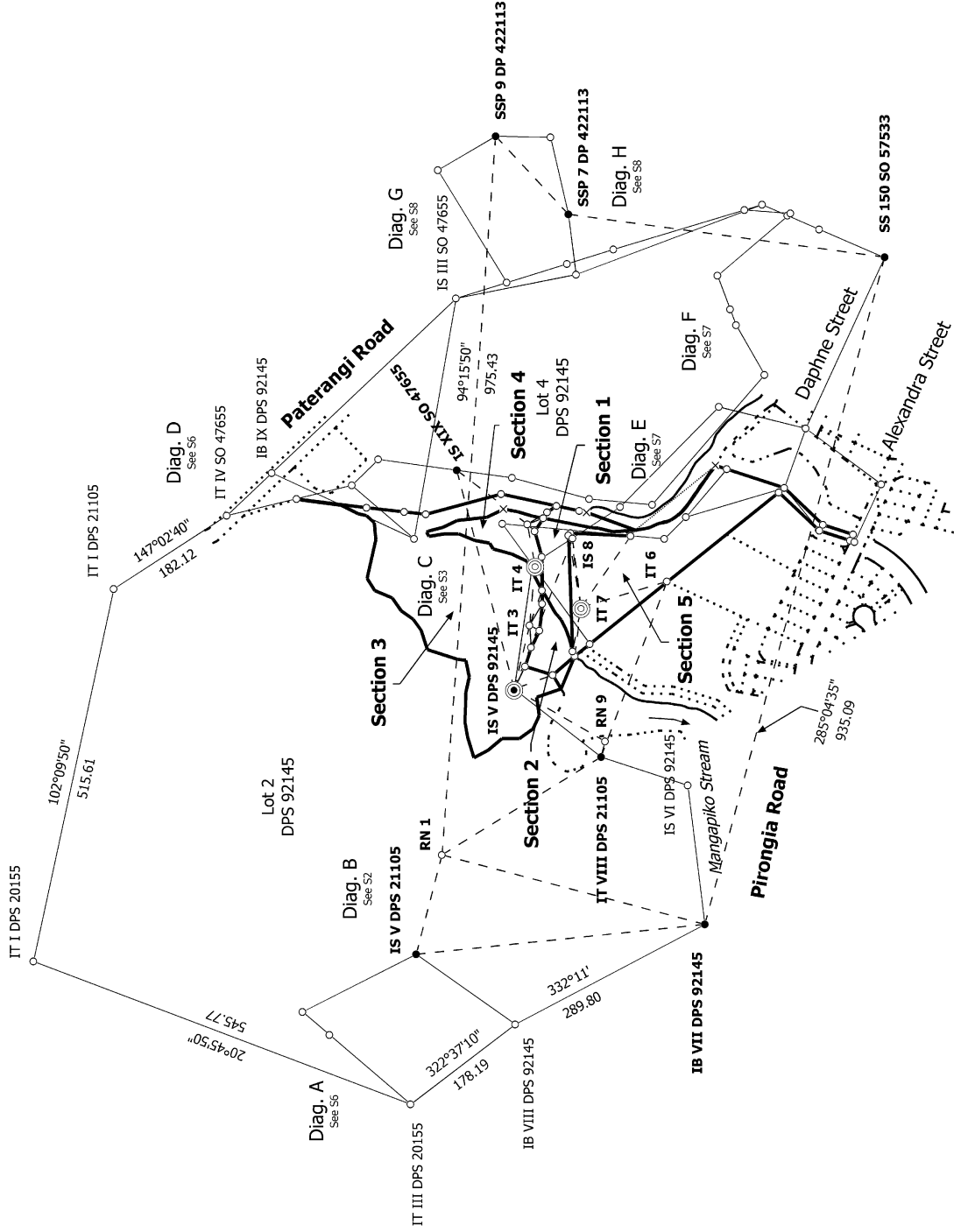
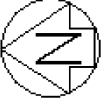
Occupation Diagram

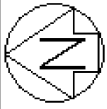
DP 542753

Occupation Diagram

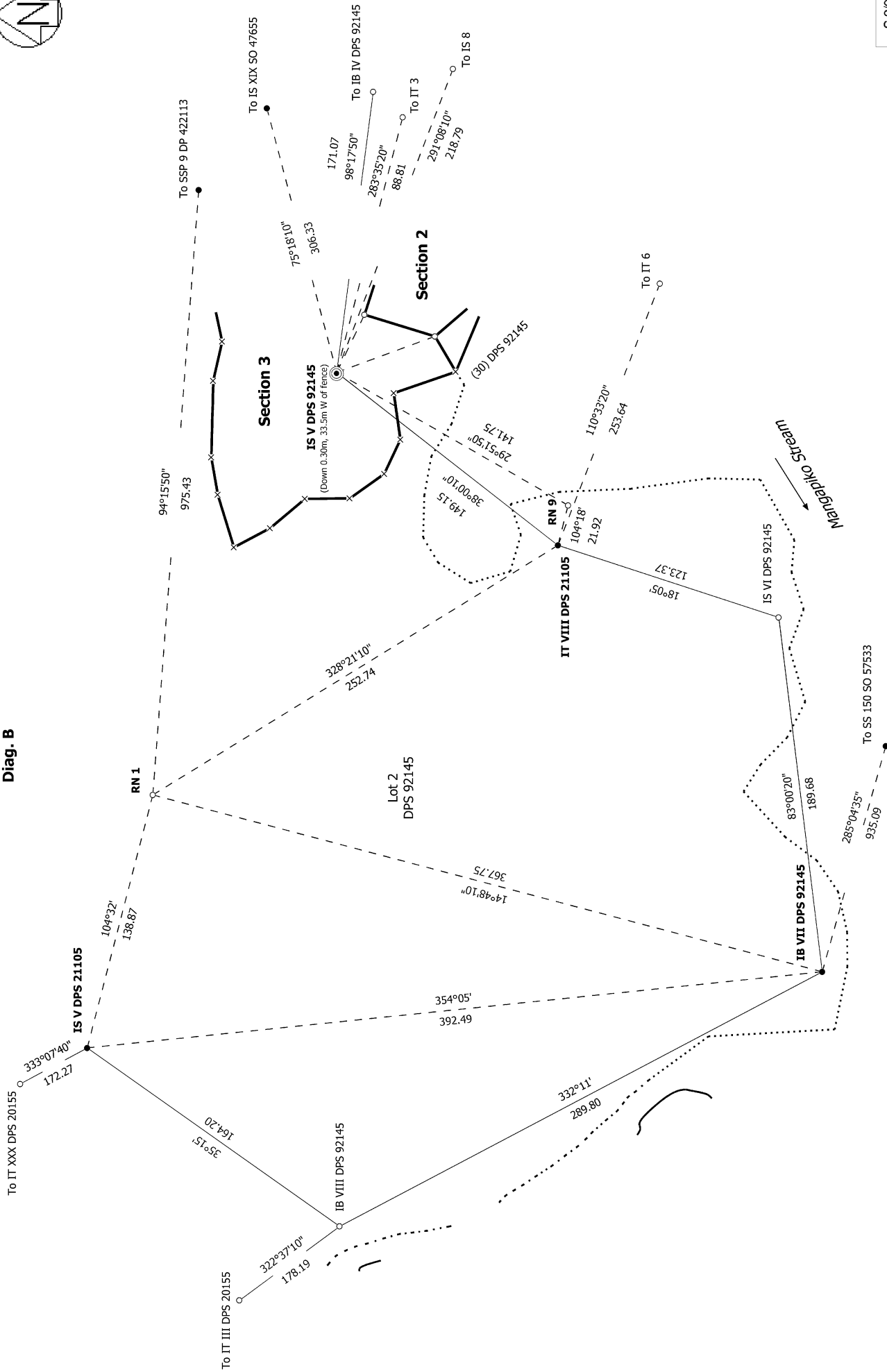
May 2024







Diag. B

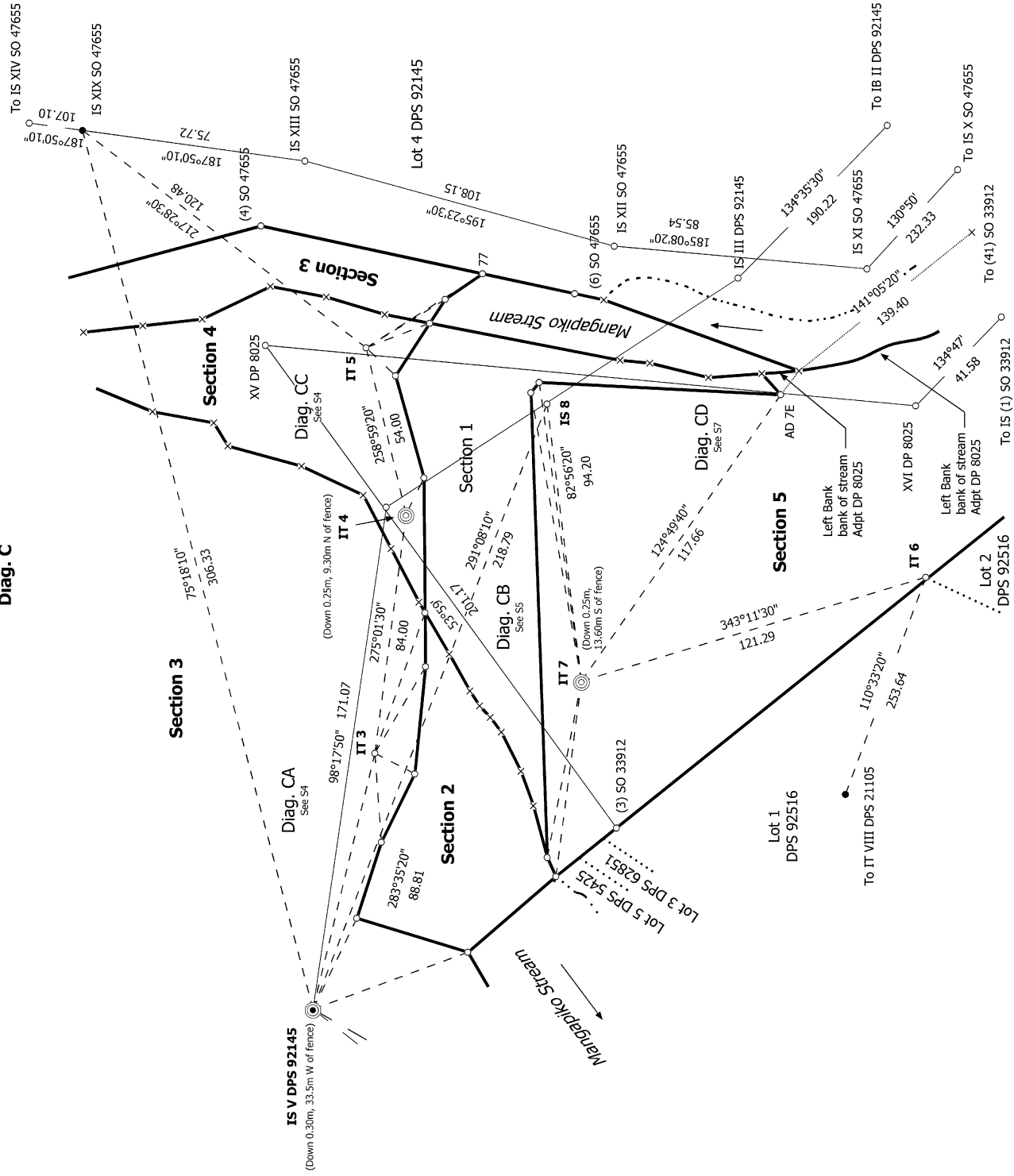


S 2/9

<p>Land District: South Auckland</p> <p>Digitally Generated Plan</p> <p>Generated on: 10/07/2024 2:57pm Page 14 of 27</p>	<p>Sections 1 - 5</p> <p>Surveyor: Rhys James Kelly Firm: Nicklin CE RPC Ltd Date of Survey: 23/04/2024</p>	<p>Record of Survey SO 542753 Approved on: 10/07/2024</p>
--	--	--



Diag. C



S 3/9

Land District: South Auckland

Digitally Generated Plan
Generated on: 10/07/2024 2:57pm Page 15 of 27

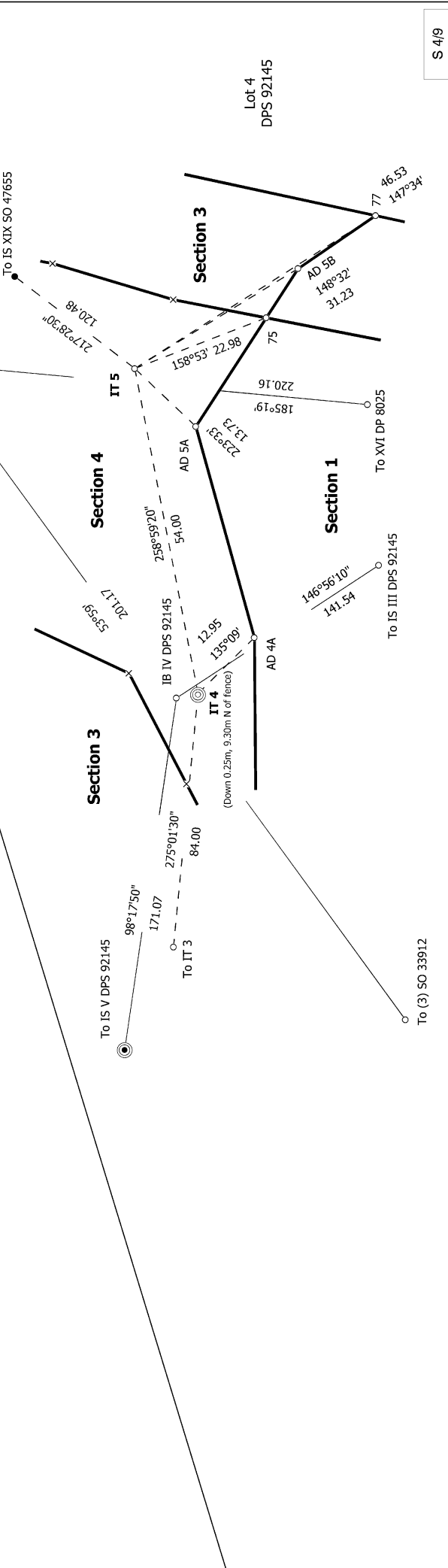
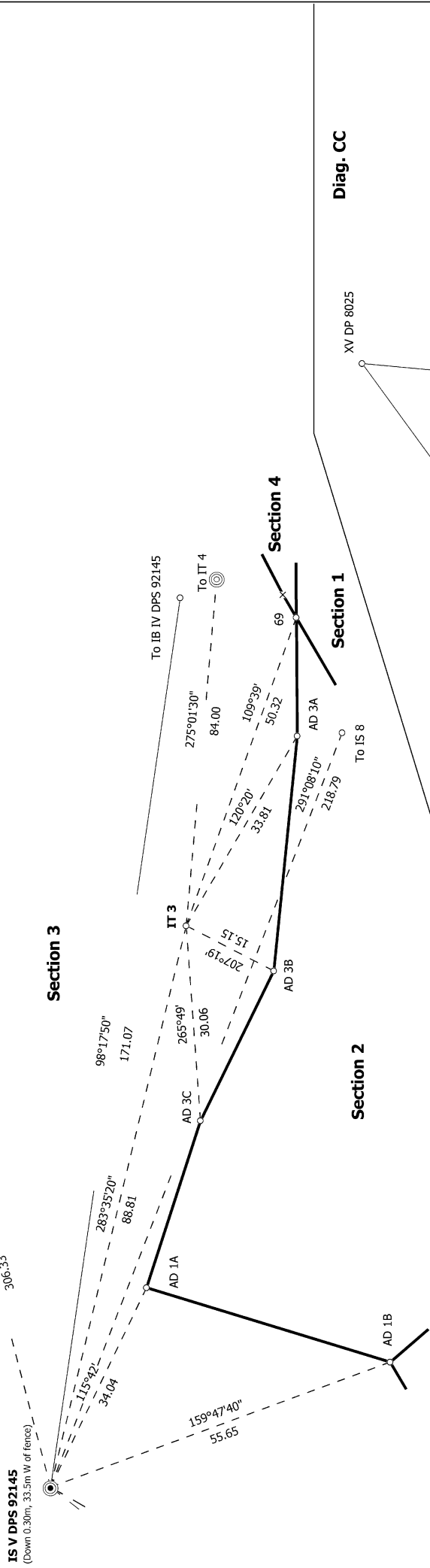
Sections 1 - 5

Surveyor: Rhys James Kelly
Firm: Nicklin CE RPC Ltd
Date of Survey: 23/04/2024

Record of Survey
SO 542753
Approved on: 10/07/2024



Diag. CA



S 4/9

Land District: South Auckland
 Digitally Generated Plan
 Generated on: 10/07/2024 2:57pm Page 16 of 27

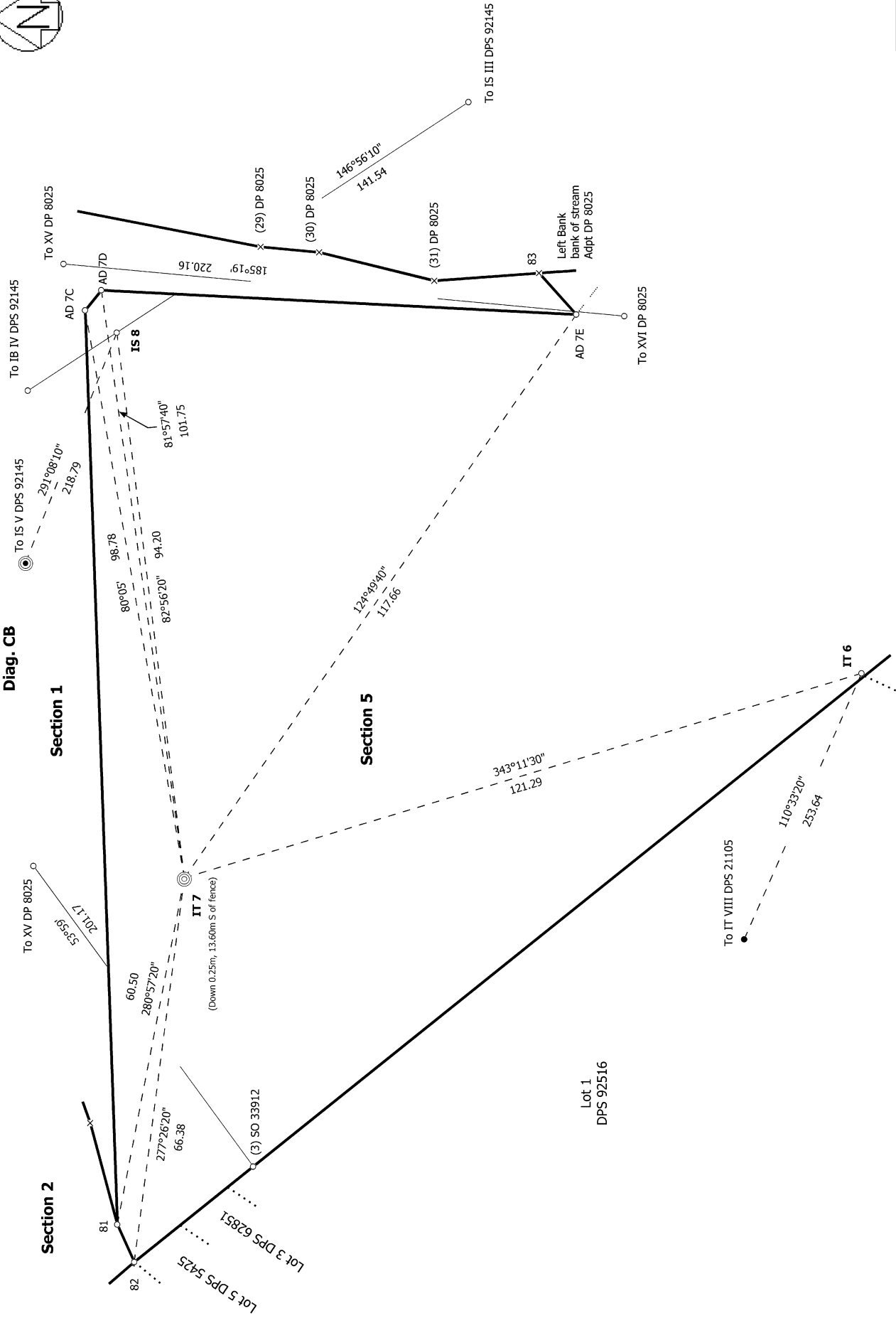
Sections 1 - 5

Surveyor: Rhys James Kelly
 Firm: Nicklin CE RPC Ltd
 Date of Survey: 23/04/2024

Record of Survey
 SO 542753
 Approved on: 10/07/2024



Diag. CB



S 5/9

Land District: South Auckland

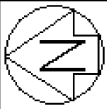
Digitally Generated Plan

Generated on: 10/07/2024 2:57pm Page 17 of 27

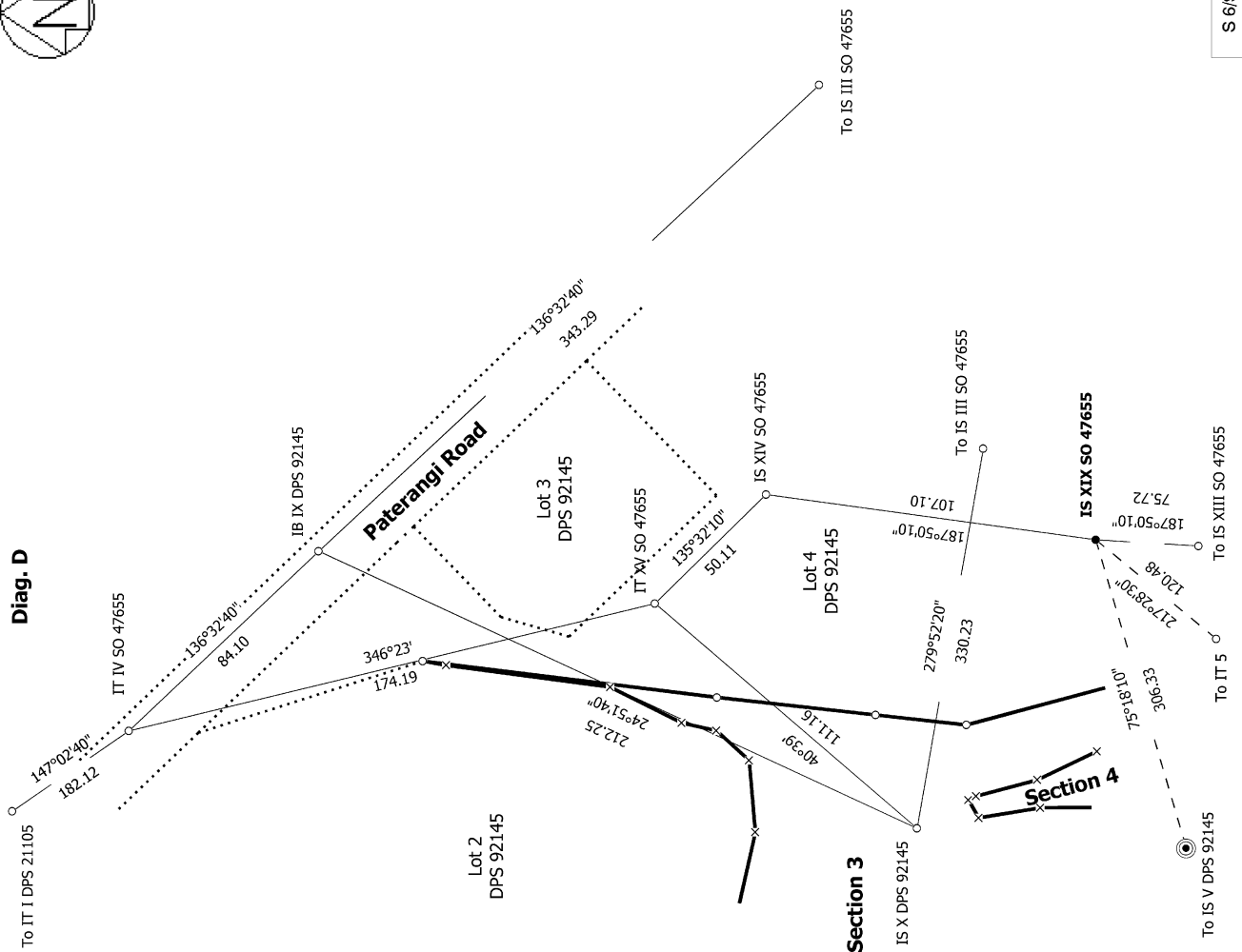
Sections 1 - 5

Surveyor: Rhys James Kelly
Firm: Nicklin CE RPC Ltd
Date of Survey: 23/04/2024

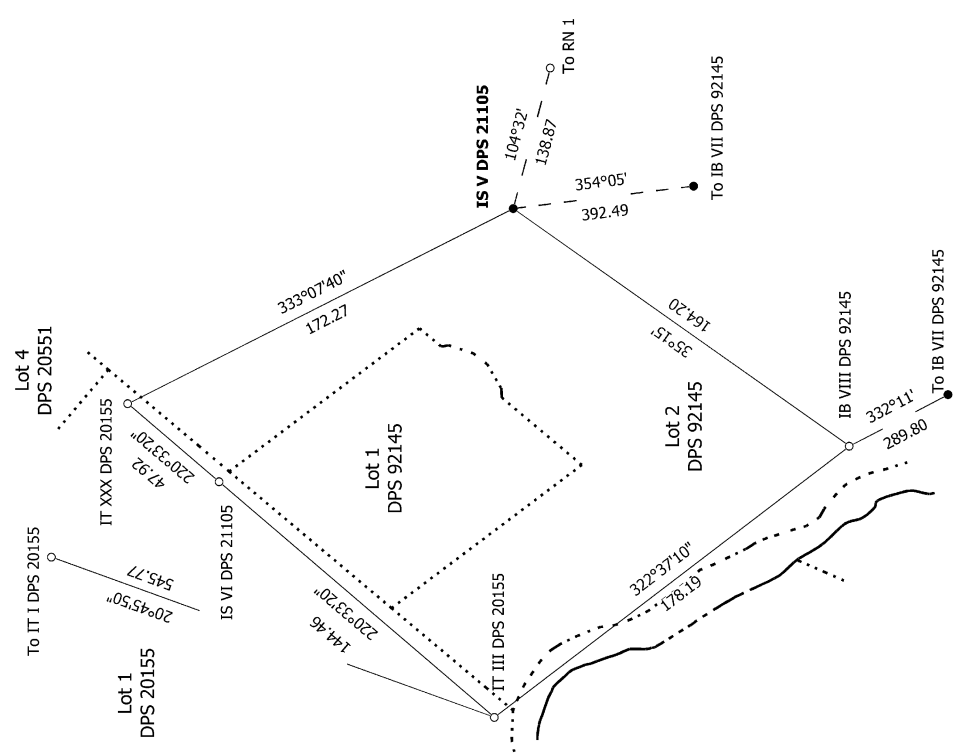
Record of Survey
SO 542753
Approved on: 10/07/2024



Diag. D



Diag. A

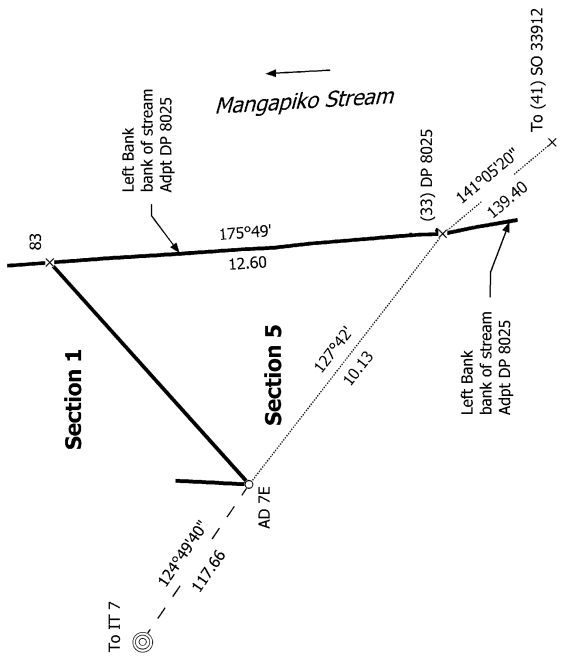


S 6/9

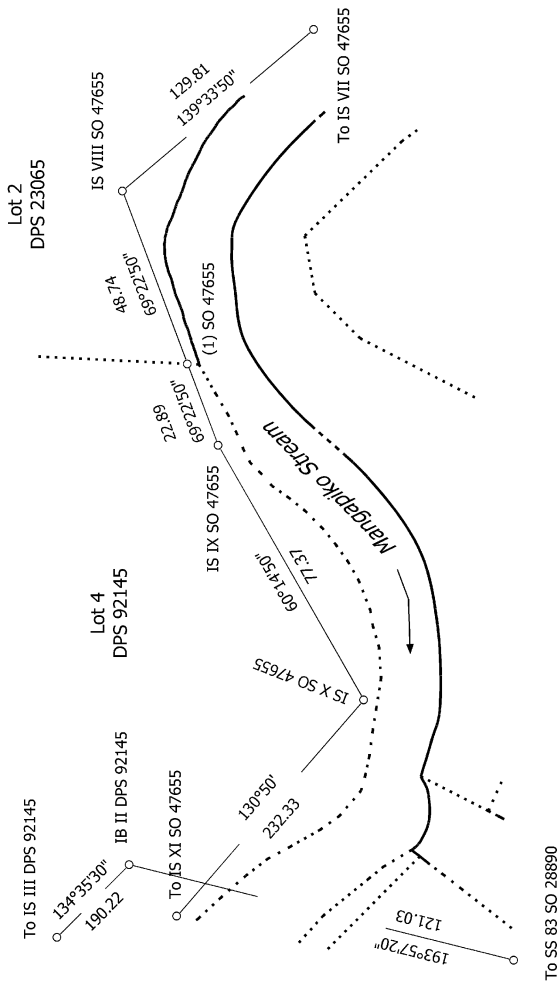
Sections 1 - 5



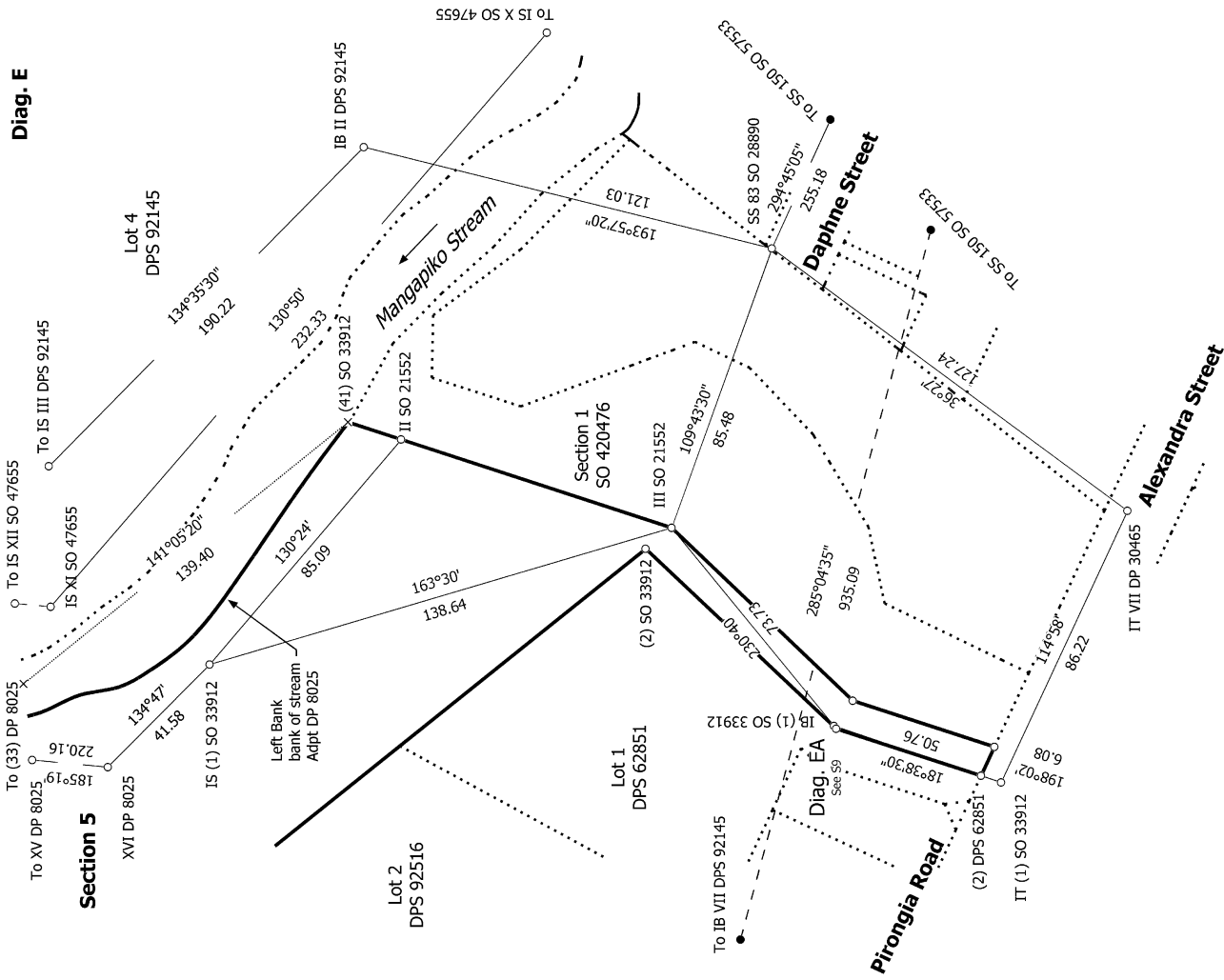
Diag. CD

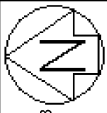


Diag. F

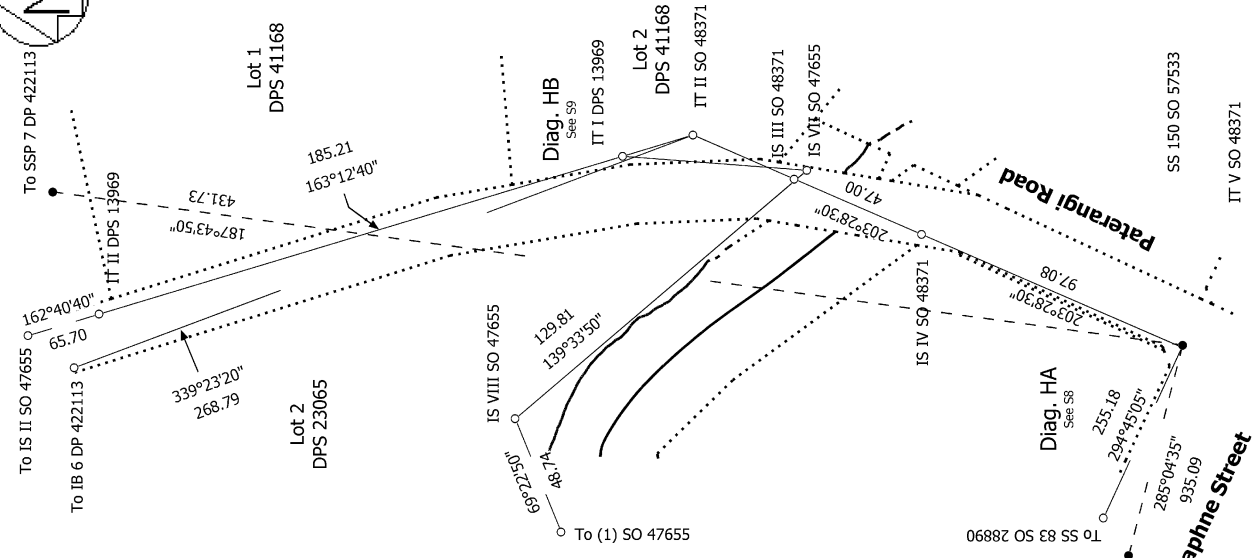


Diag. E





Diag. H

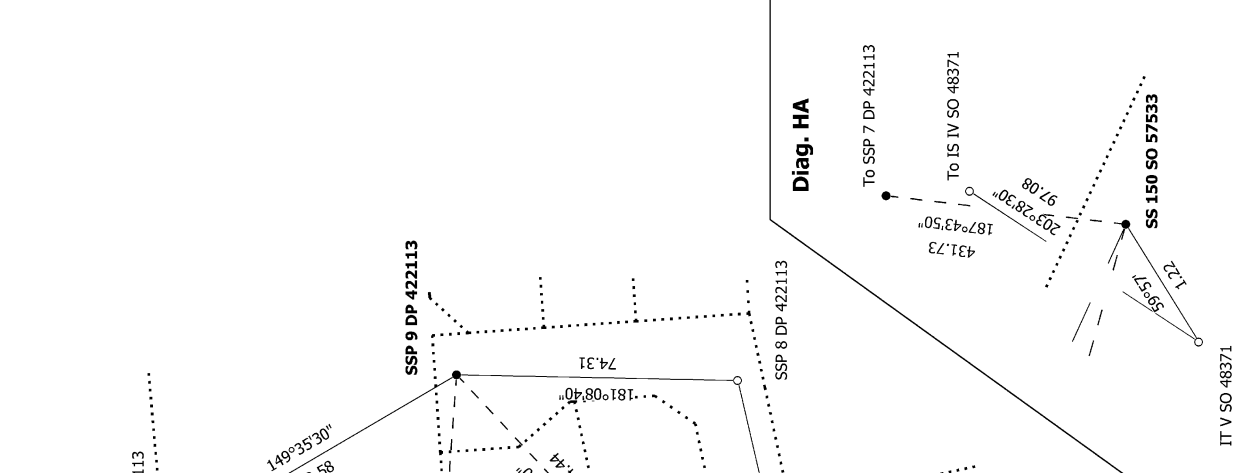


S 8/9

Record of Survey
 SO 542753
 Approved on: 10/07/2024

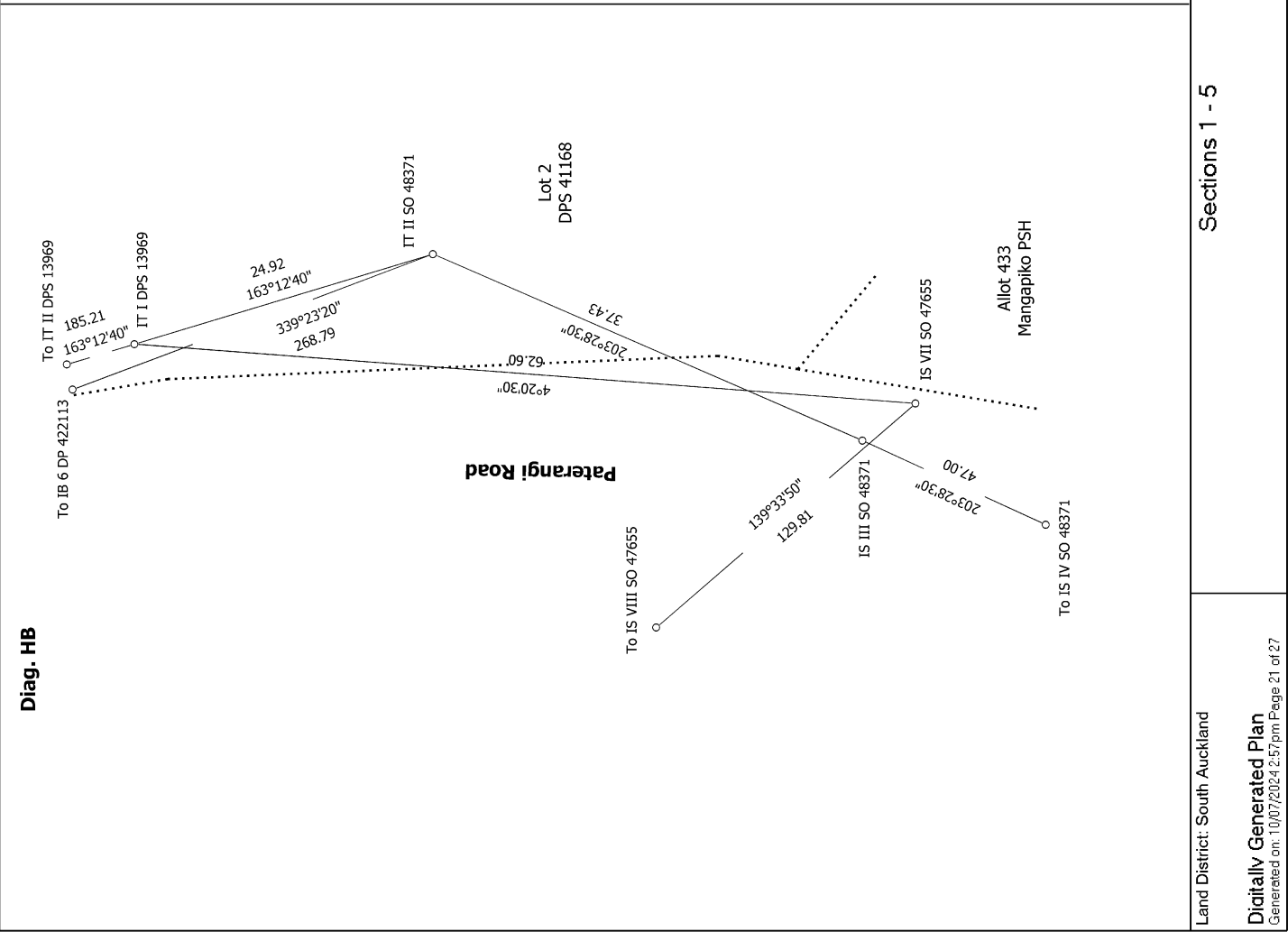
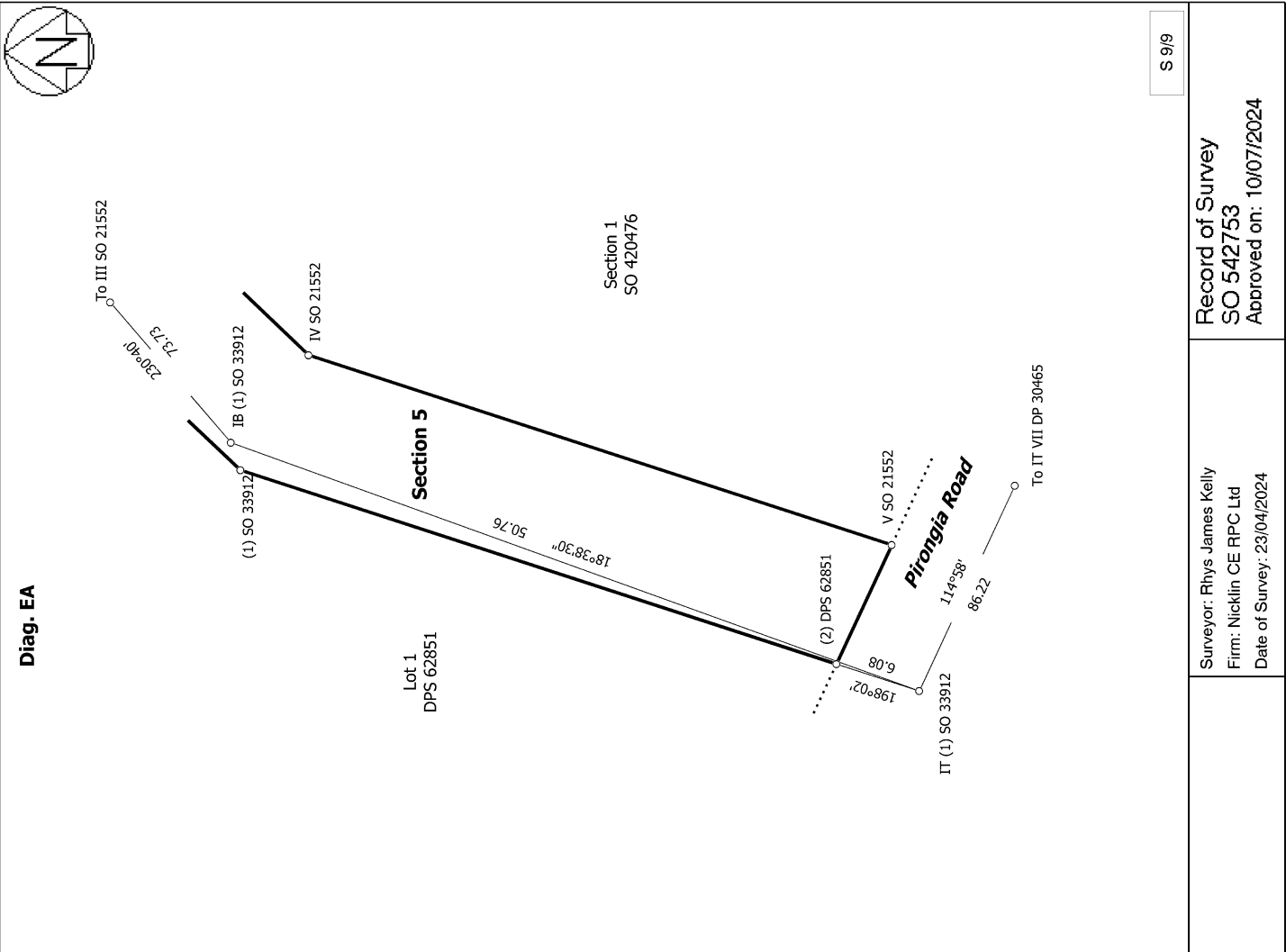
Surveyor: Rhys James Kelly
 Firm: Nicklin CE RPC Ltd
 Date of Survey: 23/04/2024

Diag. G



Sections 1 - 5

Land District: South Auckland
 Digitally Generated Plan
 Generated on: 10/07/2024 2:57pm Page 20 of 27



S 9/9

Record of Survey
SO 542753
Approved on: 10/07/2024

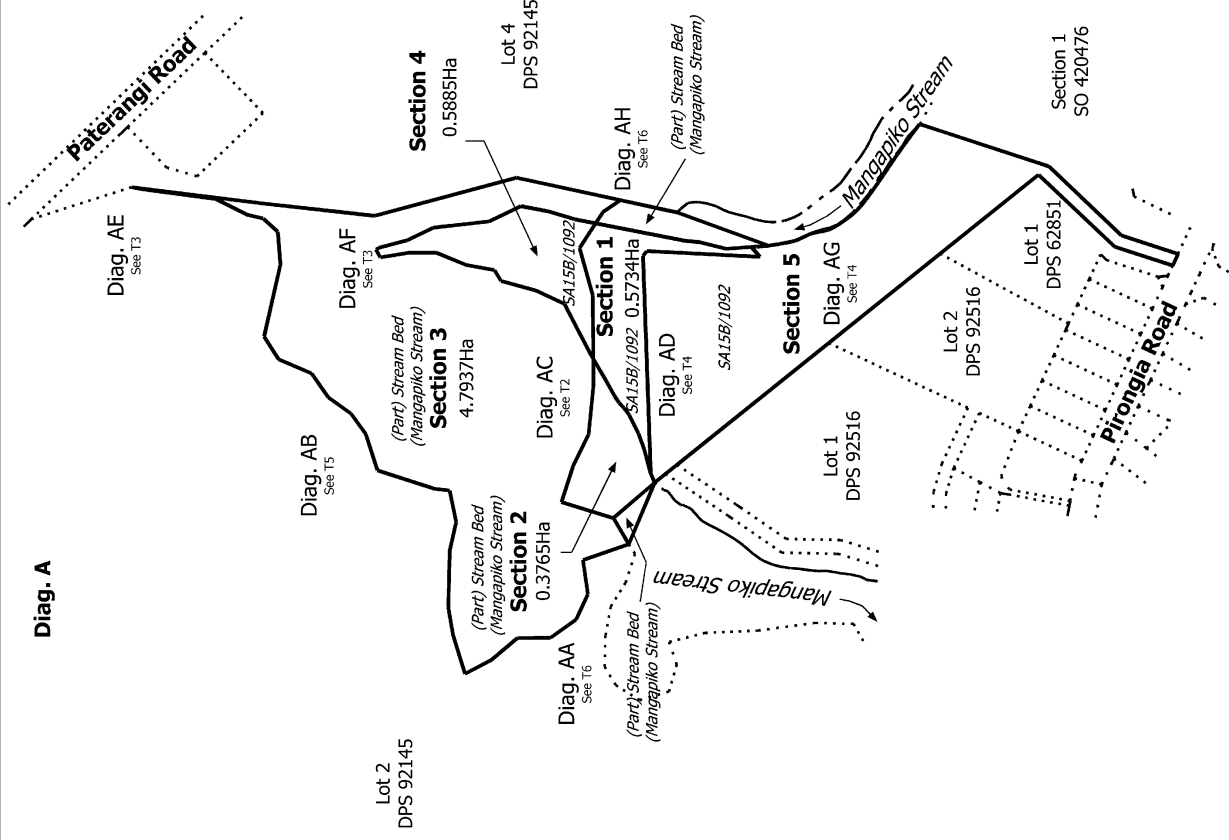
Surveyor: Rhys James Kelly
Firm: Nicklin CE RPC Ltd
Date of Survey: 23/04/2024

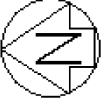
Sections 1 - 5

Land District: South Auckland
Digitally Generated Plan
Generated on: 10/07/2024 2:57pm Page 21 of 27

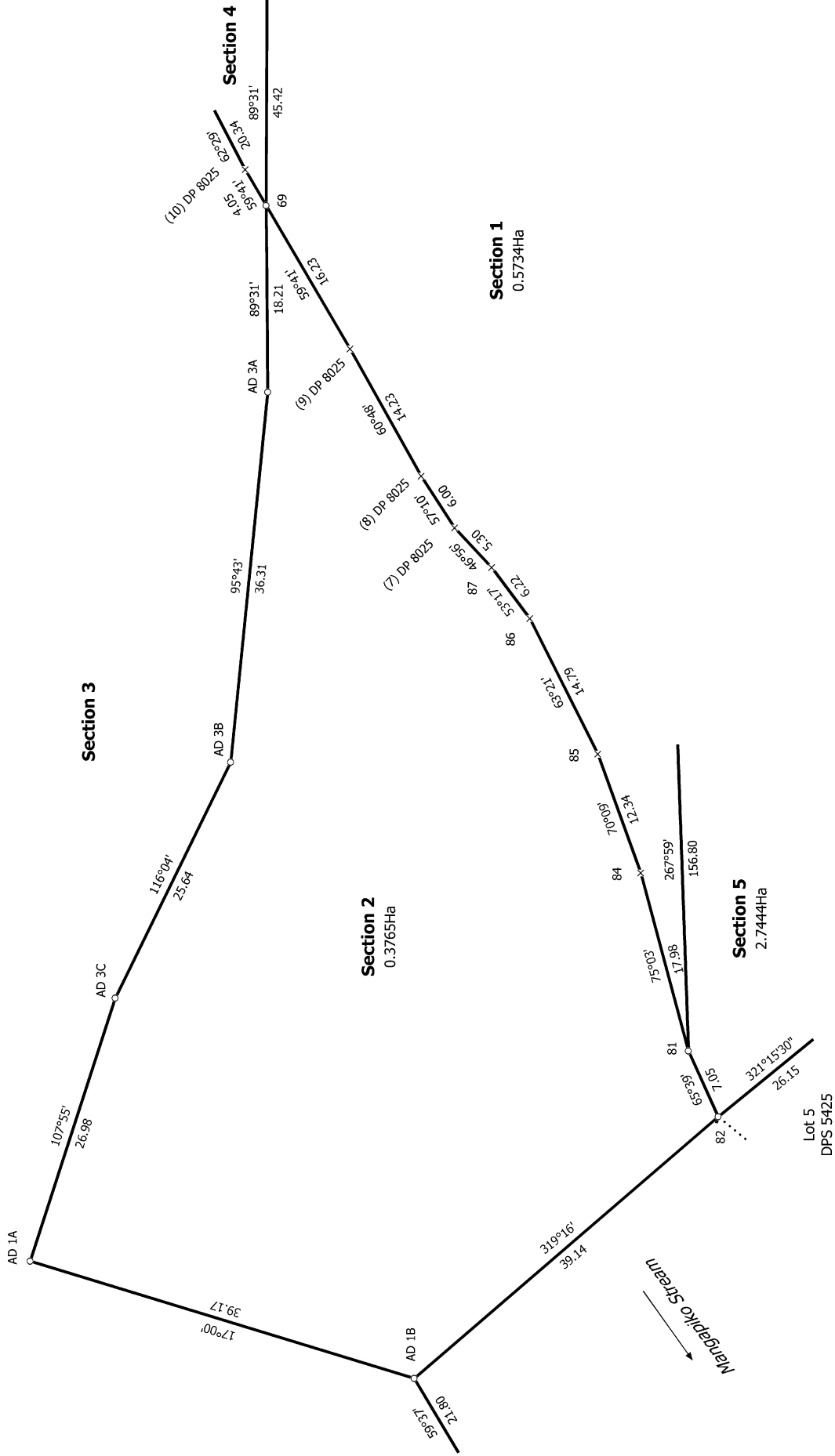


Diag. A





Diag. AC



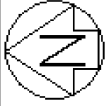
T 2/6

Land District: South Auckland
 Digitally Generated Plan
 Generated on: 10/07/2024 2:57pm Page 23 of 27

Sections 1 - 5

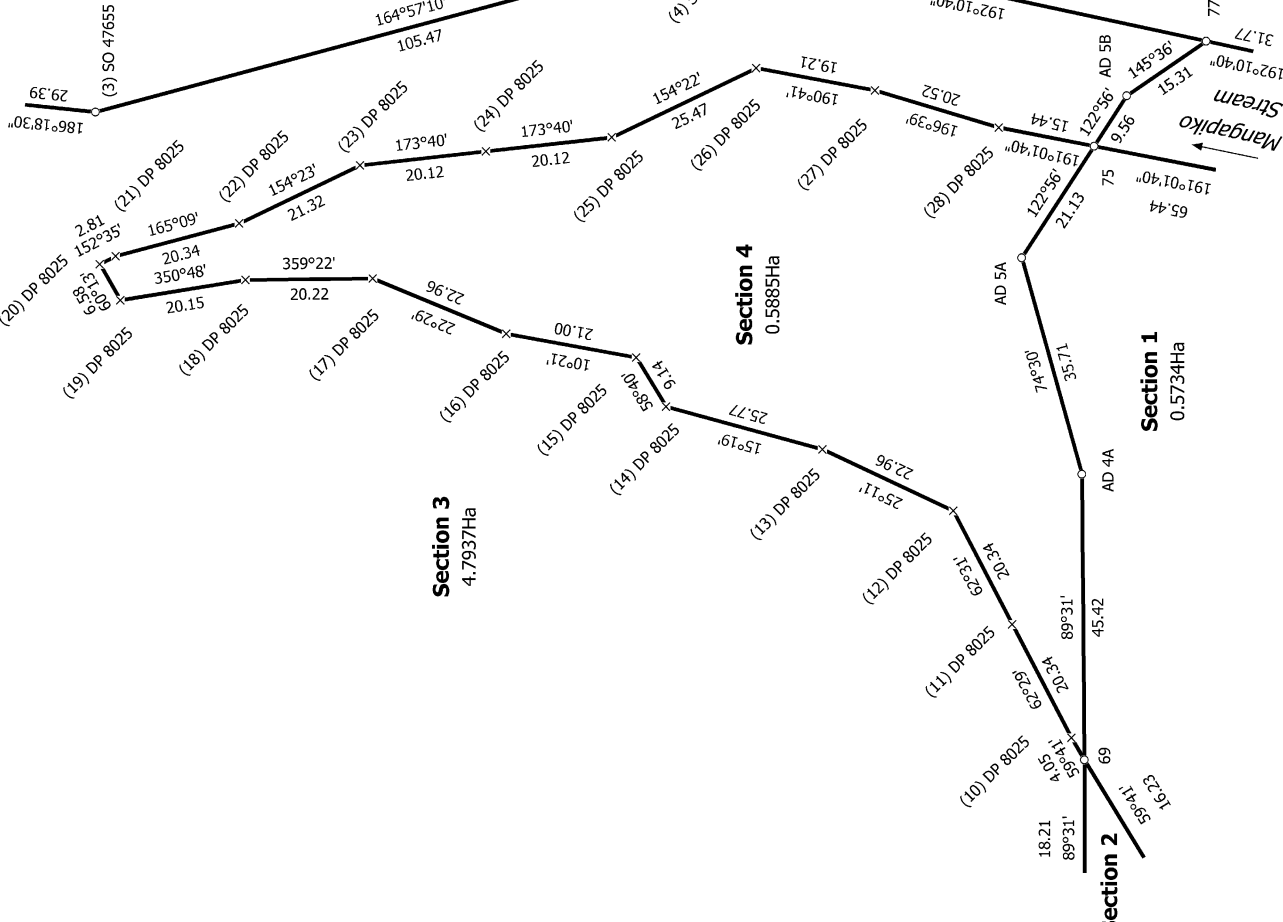
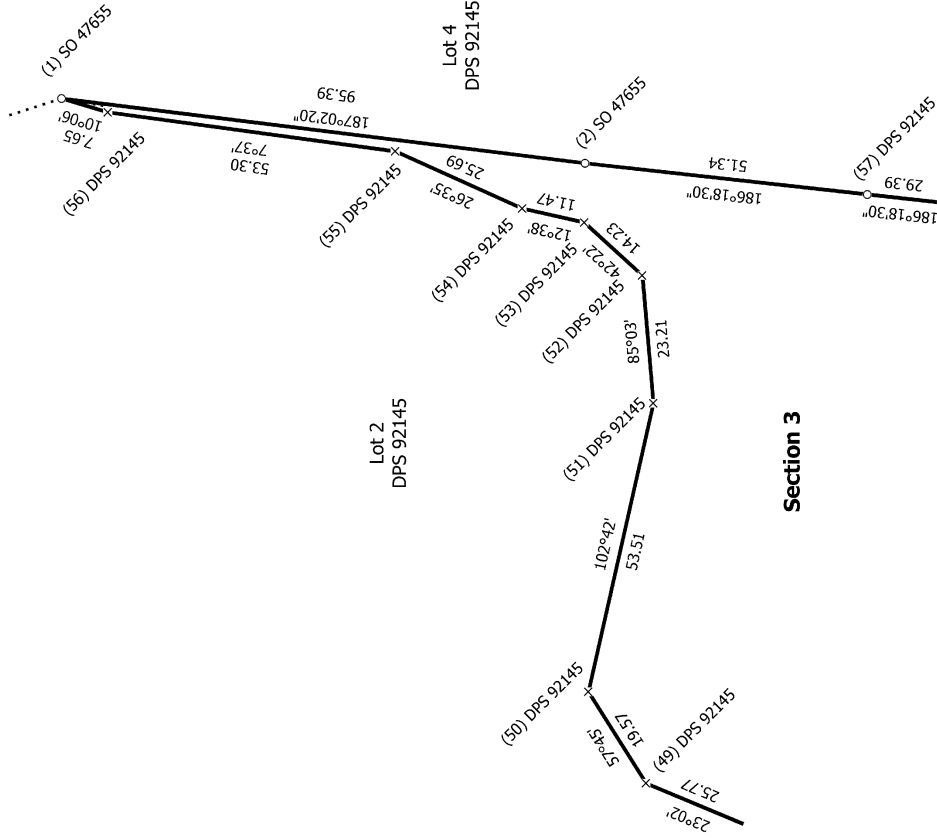
Surveyor: Rhys James Kelly
 Firm: Nicklin CE RPC Ltd
 Date of Survey: 23/04/2024

Record of Survey
 SO 542753
 Approved on: 10/07/2024



Diag. AE

Diag. AF



T 3/6

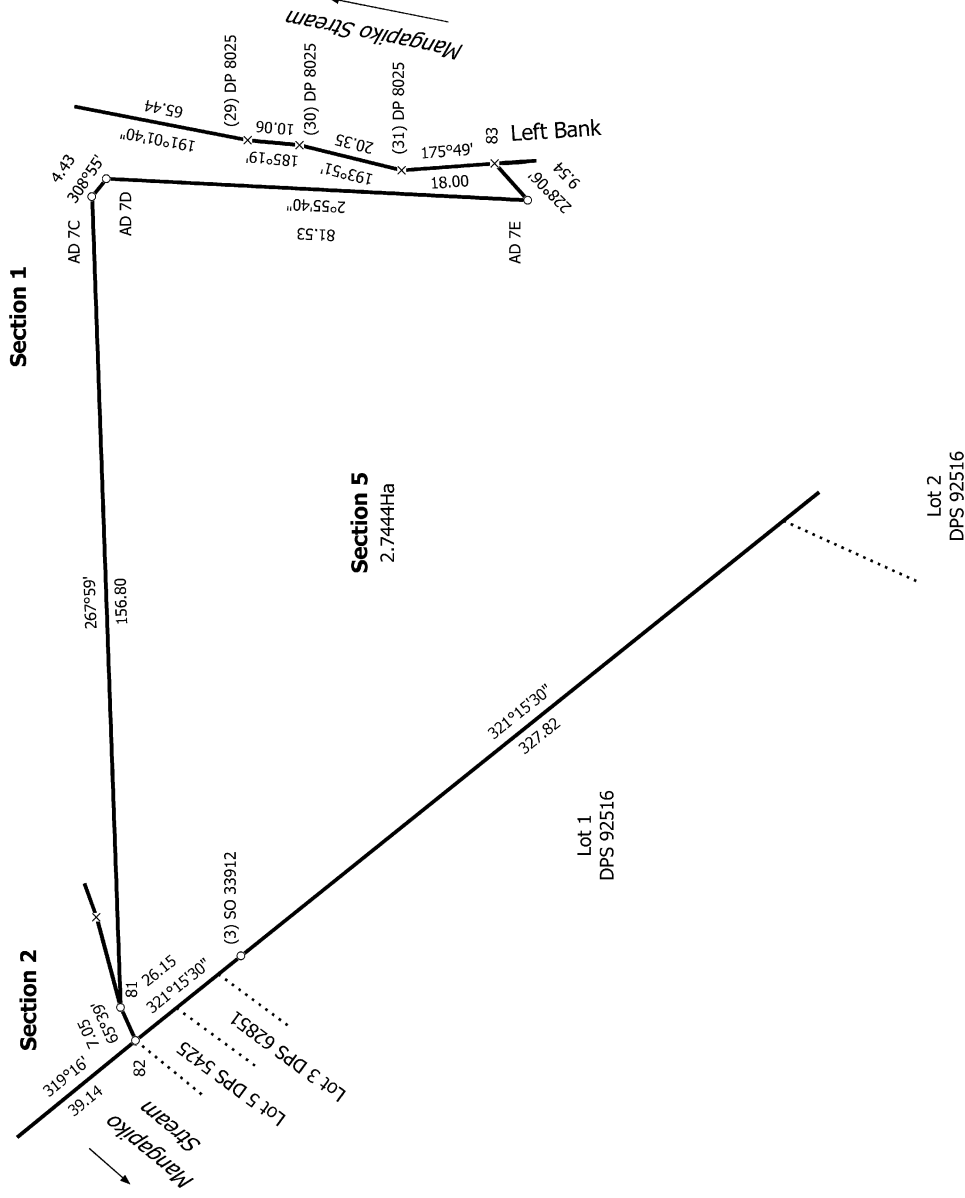
Record of Survey
SO 542753
Approved on: 10/07/2024

Surveyor: Rhys James Kelly
Firm: Nicklin CE RPC Ltd
Date of Survey: 23/04/2024

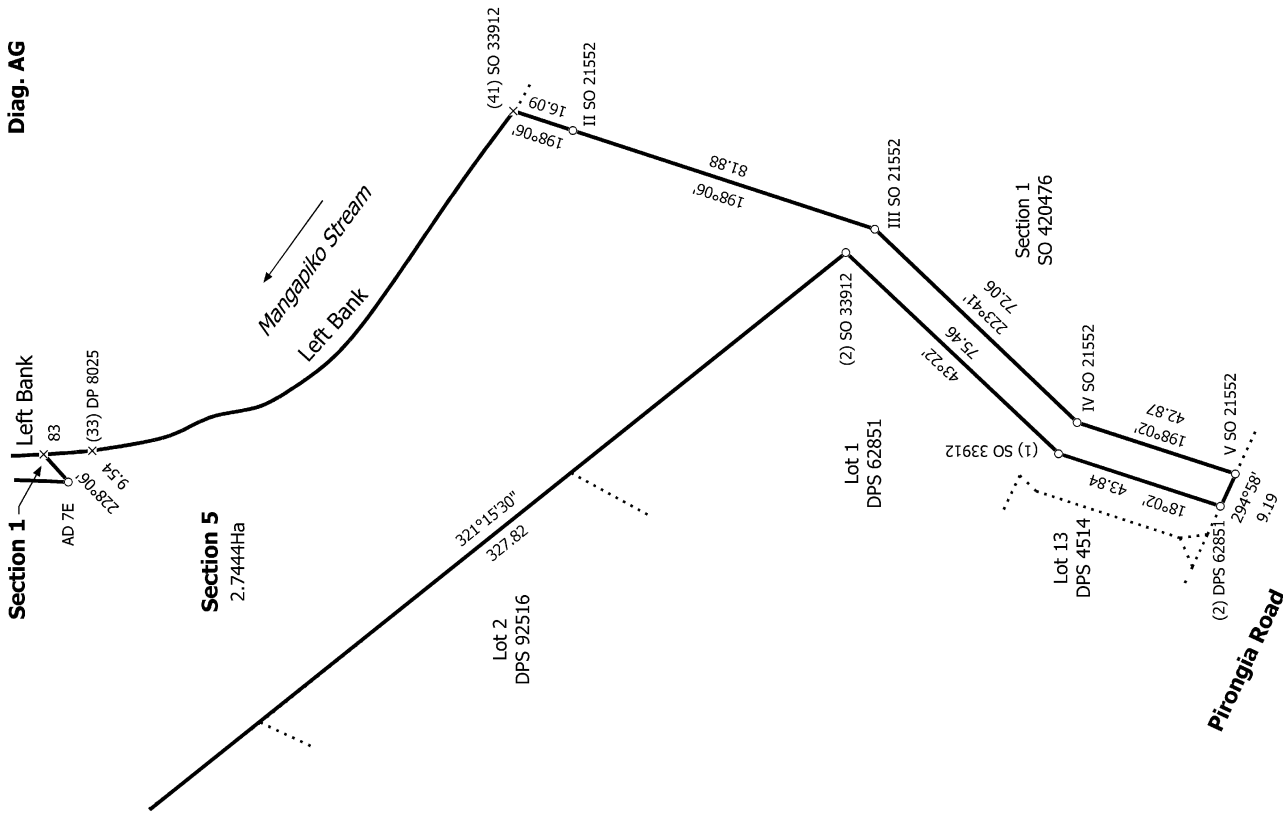
Sections 1 - 5



Diag. AD



Diag. AG



T 4/6

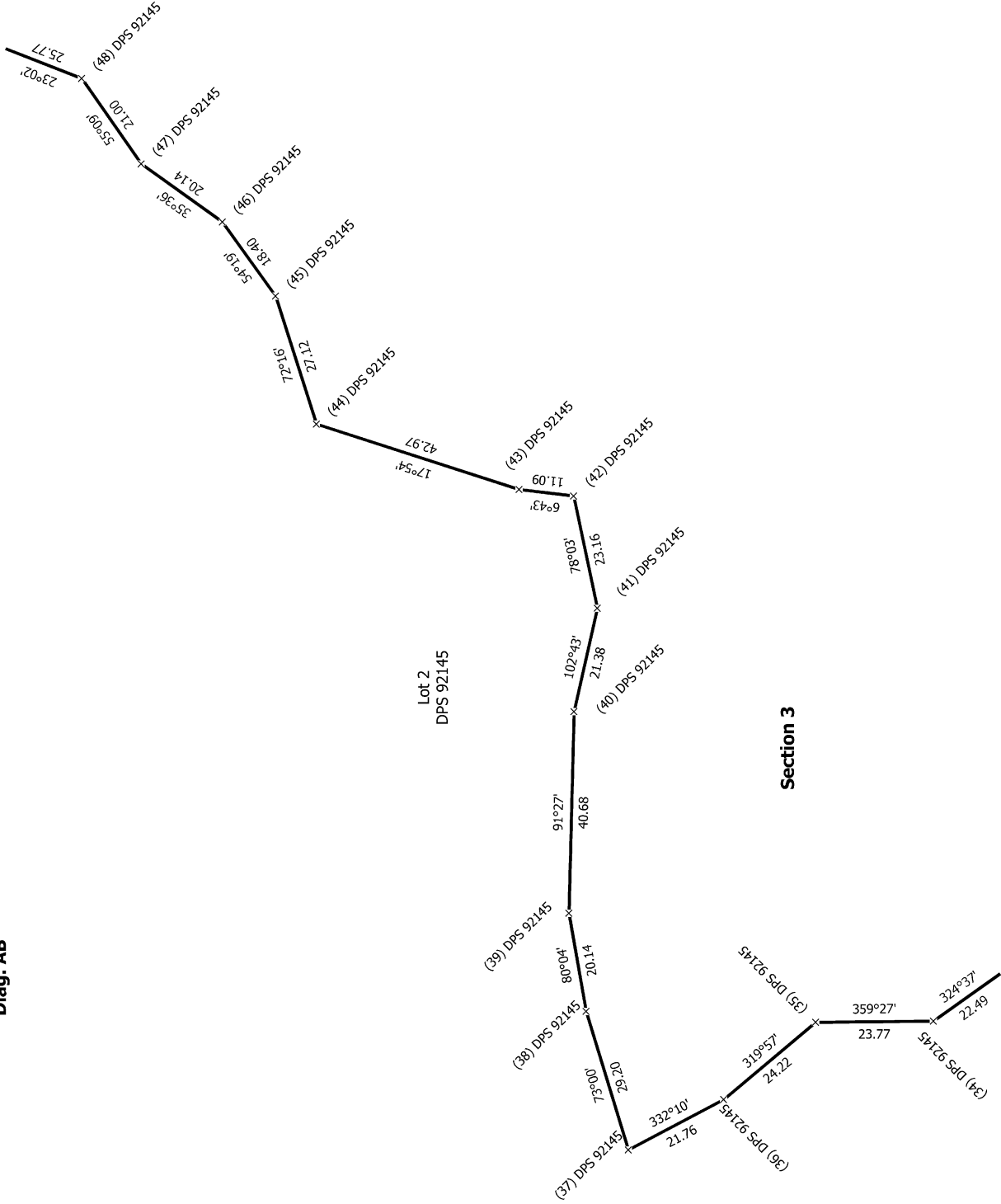
Sections 1 - 5

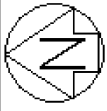
Surveyor: Rhys James Kelly
 Firm: Nicklin CE RPC Ltd
 Date of Survey: 23/04/2024

Record of Survey
 SO 542753
 Approved on: 10/07/2024

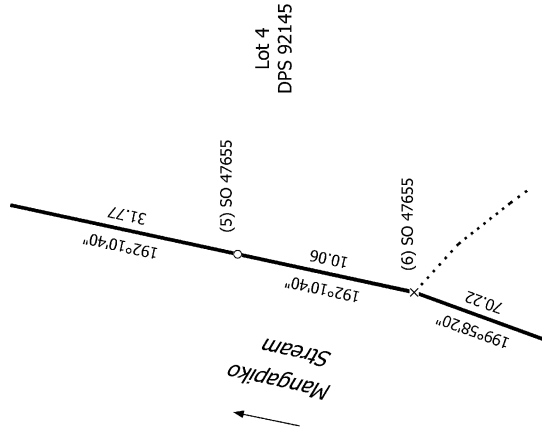


Diag. AB

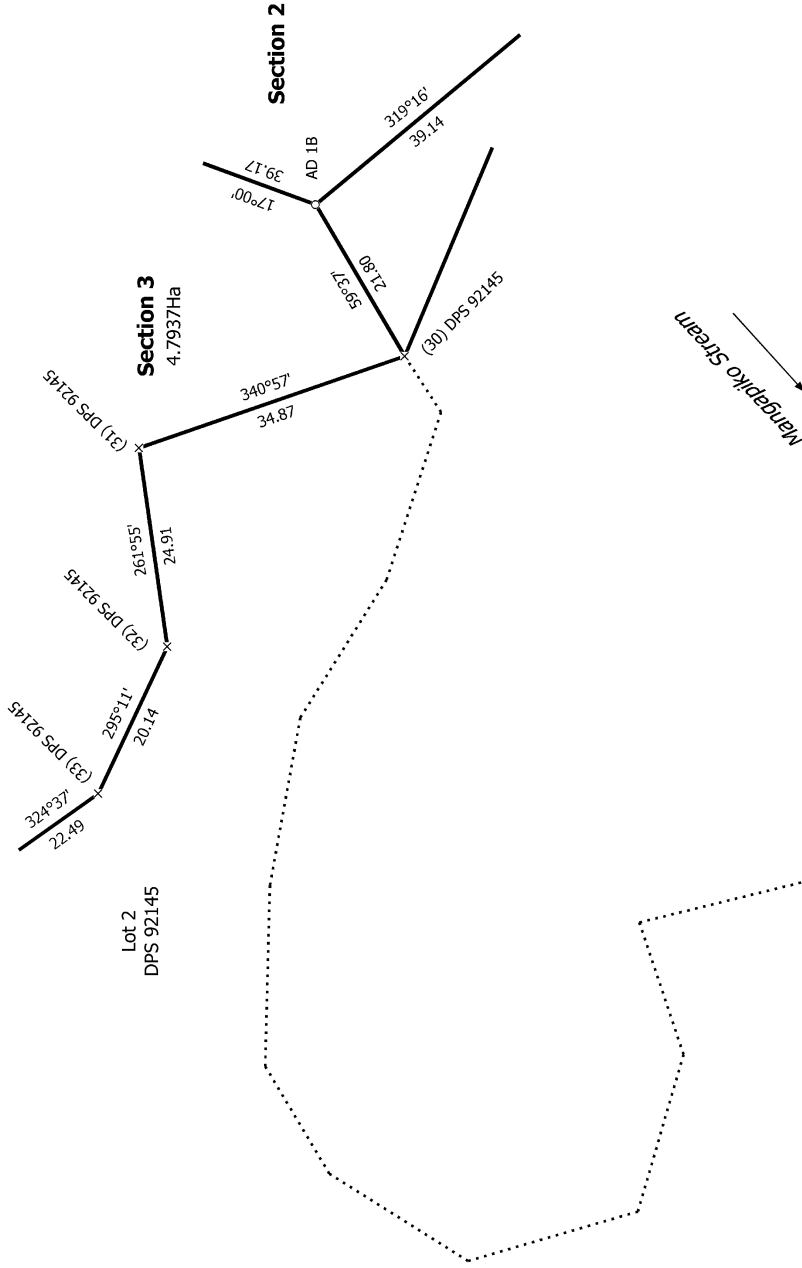




Diag. AH



Diag. AA



T 6/6

Record of Survey
SO 542753
Approved on: 10/07/2024

Surveyor: Rhys James Kelly
Firm: Nicklin CE RPC Ltd
Date of Survey: 23/04/2024

Sections 1 - 5