

Record of Survey - DP 594579

Survey Number	DP 594579
Surveyor Reference	167005 (Stage 2C)
Surveyor	Reece Allan Moody
Survey Firm	Maven Associates Limited
Surveyor Declaration	I Reece Allan Moody, being a licensed cadastral surveyor, certify that-- (a) this dataset provided by me and its related survey are accurate, correct and in accordance with the Cadastral Survey Act 2002 and Cadastral Survey Rules 2021; and (b) the survey was undertaken by me or under my personal direction. Declared on 10 Jun 2024 03:24 PM

Survey Details

Dataset Description	Units on Lot 1005 DP 570828		
Purpose	Standard Unit Plan with Survey Sheet		
Status	Deposited	Type	Survey
Land District	North Auckland	Survey Class	Class A
Meridional Circuit	Mount Eden 2000	Vertical Datum	None

Survey Dates

Surveyed Date	01/08/2023	Certified Date	10/06/2024
Submitted Date	10/06/2024 15:24:07	Survey Approval Date	14/06/2024
Deposit Date	14/05/2024		

Referenced Surveys

Survey Number	Land District	Bearing Correction
DP 570828	North Auckland	0°00'00"

Territorial Authorities

Auckland Council

Comprised In

RT 1032303

Created Parcels

Parcels	Parcel Intent	Area	RT Reference
Area ZD Deposited Plan 594579	Easement		
Area ZF Deposited Plan 594579	Easement		
Area ZG Deposited Plan 594579	Easement		
Area ZH Deposited Plan 594579	Easement		
Area ZI Deposited Plan 594579	Easement		
Area ZJ Deposited Plan 594579	Easement		
Area ZK Deposited Plan 594579	Easement		
Area ZL Deposited Plan 594579	Easement		
Area ZE Deposited Plan 594579	Easement		
Principal Unit 1 Deposited Plan 594579	Principal Unit		1146114
Principal Unit 2 Deposited Plan 594579	Principal Unit		1146115
Principal Unit 3 Deposited Plan 594579	Principal Unit		1146116

Record of Survey - DP 594579

Created Parcels

Parcels	Parcel Intent	Area	RT Reference
Principal Unit 4 Deposited Plan 594579	Principal Unit		1146117
Principal Unit 5 Deposited Plan 594579	Principal Unit		1146118
Principal Unit 6 Deposited Plan 594579	Principal Unit		1146119
Principal Unit 7 Deposited Plan 594579	Principal Unit		1146120
Principal Unit 8 Deposited Plan 594579	Principal Unit		1146121
Principal Unit 9 Deposited Plan 594579	Principal Unit		1146122
Principal Unit 10 Deposited Plan 594579	Principal Unit		1146123
Principal Unit 11 Deposited Plan 594579	Principal Unit		1146124
Principal Unit 101 Deposited Plan 594579	Principal Unit		1146125
Principal Unit 102 Deposited Plan 594579	Principal Unit		1146126
Principal Unit 103 Deposited Plan 594579	Principal Unit		1146127
Principal Unit 104 Deposited Plan 594579	Principal Unit		1146128
Principal Unit 105 Deposited Plan 594579	Principal Unit		1146129
Principal Unit 106 Deposited Plan 594579	Principal Unit		1146130
Principal Unit 107 Deposited Plan 594579	Principal Unit		1146131
Principal Unit 108 Deposited Plan 594579	Principal Unit		1146132
Principal Unit 109 Deposited Plan 594579	Principal Unit		1146133
Principal Unit 110 Deposited Plan 594579	Principal Unit		1146134
Principal Unit 111 Deposited Plan 594579	Principal Unit		1146135
Principal Unit 112 Deposited Plan 594579	Principal Unit		1146136
Principal Unit 113 Deposited Plan 594579	Principal Unit		1146137
Principal Unit 201 Deposited Plan 594579	Principal Unit		1146138
Principal Unit 202 Deposited Plan 594579	Principal Unit		1146139
Principal Unit 203 Deposited Plan 594579	Principal Unit		1146140
Principal Unit 204 Deposited Plan 594579	Principal Unit		1146141
Principal Unit 205 Deposited Plan 594579	Principal Unit		1146142
Principal Unit 206 Deposited Plan 594579	Principal Unit		1146143
Principal Unit 207 Deposited Plan 594579	Principal Unit		1146144
Principal Unit 208 Deposited Plan 594579	Principal Unit		1146145
Principal Unit 209 Deposited Plan 594579	Principal Unit		1146146
Principal Unit 210 Deposited Plan 594579	Principal Unit		1146147
Principal Unit 211 Deposited Plan 594579	Principal Unit		1146148
Principal Unit 212 Deposited Plan 594579	Principal Unit		1146149
Principal Unit 213 Deposited Plan 594579	Principal Unit		1146150
Principal Unit 311 Deposited Plan 594579	Principal Unit		1146151
Principal Unit 312 Deposited Plan 594579	Principal Unit		1146152
Principal Unit 313 Deposited Plan 594579	Principal Unit		1146153
Accessory Unit 20 Deposited Plan 594579	Accessory Unit		Multiple
Accessory Unit 21 Deposited Plan 594579	Accessory Unit		Multiple
Accessory Unit 22 Deposited Plan 594579	Accessory Unit		Multiple
Accessory Unit 23 Deposited Plan 594579	Accessory Unit		Multiple
Accessory Unit 24 Deposited Plan 594579	Accessory Unit		Multiple
Accessory Unit 50 Deposited Plan 594579	Accessory Unit		1146115
Accessory Unit 51 Deposited Plan 594579	Accessory Unit		1146116

Record of Survey - DP 594579

Created Parcels

Parcels	Parcel Intent	Area	RT Reference
Accessory Unit 52 Deposited Plan 594579	Accessory Unit		1146117
Accessory Unit 53 Deposited Plan 594579	Accessory Unit		1146118
Accessory Unit 54 Deposited Plan 594579	Accessory Unit		1146126
Accessory Unit 55 Deposited Plan 594579	Accessory Unit		1146127
Accessory Unit 56 Deposited Plan 594579	Accessory Unit		1146128
Accessory Unit 57 Deposited Plan 594579	Accessory Unit		1146129
Accessory Unit 58 Deposited Plan 594579	Accessory Unit		1146130
Accessory Unit 59 Deposited Plan 594579	Accessory Unit		1146121
Accessory Unit 60 Deposited Plan 594579	Accessory Unit		1146145
Accessory Unit 61 Deposited Plan 594579	Accessory Unit		1146152
Accessory Unit 62 Deposited Plan 594579	Accessory Unit		1146120
Accessory Unit 63 Deposited Plan 594579	Accessory Unit		1146143
Accessory Unit 64 Deposited Plan 594579	Accessory Unit		1146119
Accessory Unit 65 Deposited Plan 594579	Accessory Unit		1146149
Accessory Unit 66 Deposited Plan 594579	Accessory Unit		1146124
Accessory Unit 67 Deposited Plan 594579	Accessory Unit		1146146
Accessory Unit 68 Deposited Plan 594579	Accessory Unit		1146131
Total Area		0.0000 Ha	

Mark and Vector

Survey Number DP 594579

Meridional Circuit Mount Eden 2000

From	To	Code	Bearing	Adpt Surv	Bearing Correction	Distance	Adpt Surv	Class
ABD J/4 DP 570828	UNMK 222 DP 570828	ob0	111°35'20"	A DP 570828	0°00'00"	1.44 A	DP 570828	Class A
UNMK 222 DP 570828	UNMK I DP 594579	ob3	111°35'20"	A DP 570828	0°00'00"	1.90 C		Class A
UNMK I DP 594579	UNMK J DP 594579	ob5	111°35'20"	A DP 570828	0°00'00"	39.66 C		
UNMK J DP 594579	ABD I/10 DP 570828	ob7	111°35'20"	A DP 570828	0°00'00"	5.26 C		Class A
ABD I/10 DP 570828	UNMK K DP 594579	ob2	21°35'20"	A DP 570828	0°00'00"	1.00 C		Class A
UNMK K DP 594579	ABD I/11 DP 570828	ob9	21°35'20"	A DP 570828	0°00'00"	3.56 C		
UNMK 222 DP 570828	UNMK 226 DP 570828	ob4	201°35'20"	A DP 570828	0°00'00"	2.51 A	DP 570828	Class A
UNMK 226 DP 570828	UNMK L DP 594579	ob11	111°35'20"	A DP 570828	0°00'00"	1.90 C		Class A
UNMK L DP 594579	UNMK M DP 594579	ob12	111°35'20"	A DP 570828	0°00'00"	39.66 C		Class A
UNMK M DP 594579	UNMK 227 DP 570828	ob13	111°35'20"	A DP 570828	0°00'00"	2.68 C		Class A
UNMK 228 DP 570828	UNMK 229 DP 570828	ob14	166°47'00"	A DP 570828	0°00'00"	1.50 A	DP 570828	Class A
UNMK 229 DP 570828	UNMK 230 DP 570828	ob16	201°35'20"	A DP 570828	0°00'00"	3.50 A	DP 570828	Class A
UNMK 230 DP 570828	UNMK N DP 594579	ob17	291°35'20"	A DP 570828	0°00'00"	0.85 C		Class A
UNMK N DP 594579	UNMK 233 DP 570828	ob18	291°35'20"	A DP 570828	0°00'00"	0.98 C		Class A
UNMK 233 DP 570828	UNMK 224 DP 570828	ob20	346°47'00"	A DP 570828	0°00'00"	3.32 A	DP 570828	Class A
UNMK 231 DP 570828	UNMK 232 DP 570828	ob21	291°35'20"	A DP 570828	0°00'00"	44.74 A	DP 570828	Class A
ABD J/4 DP 570828	PEG J/5 DP 570828	ob1	201°35'20"	A DP 570828	0°00'00"	4.65 A	DP 570828	Class A
PEG J/5 DP 570828	UNMK 235 DP 570828	ob26	291°35'20"	A DP 570828	0°00'00"	1.57 A	DP 570828	Class A
UNMK 235 DP 570828	UNMK O DP 594579	ob25	291°35'20"	A DP 570828	0°00'00"	0.95 C		Class A
UNMK O DP 594579	PEG J/6 DP 570828	ob27	291°35'20"	A DP 570828	0°00'00"	6.68 C		
UNMK I DP 594579	UNMK L DP 594579	ob6	201°35'20"	C		2.51 C		Class A
UNMK 232 DP 570828	UNMK Q DP 594579	ob23	21°35'20"	C		3.50 C		Class A
UNMK Q DP 594579	UNMK 226 DP 570828	ob28	111°35'20"	C		0.50 C		Class A

Mark and Vector

Survey Number DP 594579

Meridional Circuit Mount Eden 2000

From	To	Code	Bearing	Adpt Surv	Bearing Correction	Distance	Adpt Surv	Class
UNMK 232 DP 570828	UNMK R DP 594579	ob24	291°35'20"	C		0.46 C		Class A
UNMK R DP 594579	UNMK S DP 594579	ob29	201°35'20"	C		4.42 C		Class A
UNMK S DP 594579	UNMK T DP 594579	ob30	291°35'20"	C		3.00 C		Class A
UNMK T DP 594579	UNMK O DP 594579	ob31	21°35'20"	C		5.78 C		Class A
UNMK 231 DP 570828	UNMK 227 DP 570828	ob22	21°35'20"	C		3.50 C		Class A
UNMK J DP 594579	UNMK M DP 594579	ob8	201°35'20"	C		2.51 C		Class A
UNMK 228 DP 570828	UNMK N DP 594579	ob15	201°35'20"	C		4.73 C		Class A
UNMK K DP 594579	UNMK U DP 594579	ob10	111°35'20"	C		0.92 C		Class A
UNMK U DP 594579	UNMK 228 DP 570828	ob32	201°35'20"	C		5.33 C		Class A
UNMK N DP 594579	UNMK V DP 594579	ob19	201°35'20"	C		6.84 C		Class A
UNMK V DP 594579	UNMK A DP 594579	ob33	111°35'20"	C		1.37 C		Class A
UNMK A DP 594579	UNMK B DP 594579	ob34	111°35'20"	C		7.14 C		Class A
UNMK B DP 594579	UNMK C DP 594579	ob35	201°35'20"	C		3.00 C		Class A
UNMK C DP 594579	UNMK D DP 594579	ob36	291°35'20"	C		7.14 C		Class A
UNMK D DP 594579	UNMK E DP 594579	ob37	201°35'20"	C		2.04 C		Class A
UNMK E DP 594579	UNMK F DP 594579	ob39	291°35'20"	C		3.00 C		Class A
UNMK F DP 594579	UNMK G DP 594579	ob40	21°35'20"	C		1.08 C		Class A
UNMK G DP 594579	UNMK H DP 594579	ob41	337°08'00"	C		2.66 C		Class A
UNMK H DP 594579	UNMK 231 DP 570828	ob42	21°35'20"	C		11.96 C		Class A
UNMK D DP 594579	UNMK A DP 594579	ob38	21°35'20"	C		3.00 C		Class A



Mark and Vector

Survey Number DP 594579

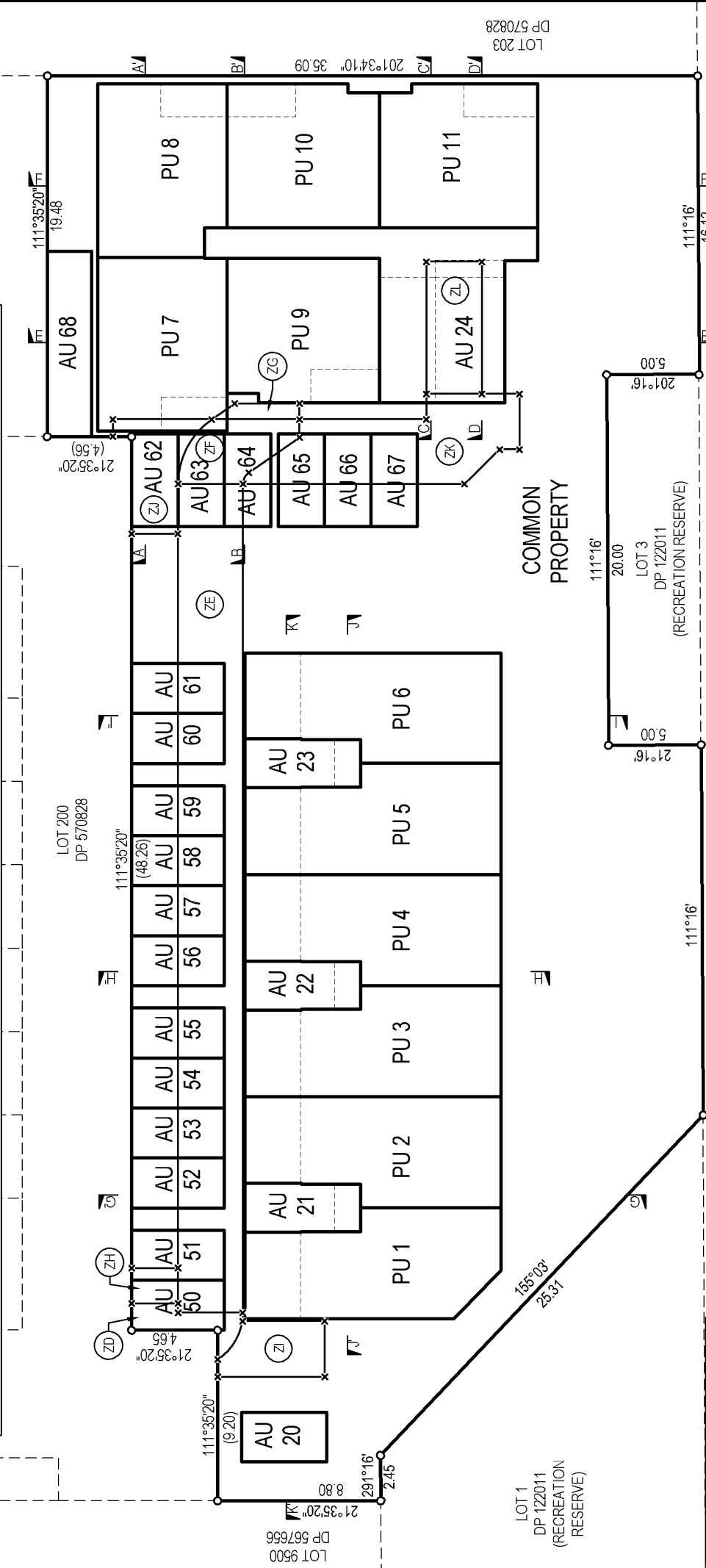
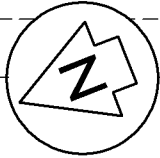
Meridional Circuit Mount Eden 2000

From	To	Code	Chord Bearing	Arc Length	Radius	Adpt Surv
UNMK 227 DP 570828	UNMK 228 DP 570828	ob43	139°09'00"	4.10	4.25 A	DP 570828
UNMK 224 DP 570828	UNMK 231 DP 570828	ob44	319°09'00"	0.73	0.75 A	DP 570828
UNMK 232 DP 570828	UNMK 235 DP 570828	ob45	319°58'00"	2.98	3.00 A	DP 570828

*** End of Report ***

GENERAL NOTES (ALL SHEETS)

- UNLESS SHOWN OTHERWISE THE BOUNDARIES BETWEEN PRINCIPAL UNITS (PU) AND ACCESSORY UNITS (AU) ARE DEFINED TO THE CENTRELINE OF BUILDING ELEMENTS INCLUDING WALLS, DOORS, AND INCLUDING THE PRODUCTIONS THEREOF (WHERE APPLICABLE).
- UNLESS SHOWN OTHERWISE THE BOUNDARIES BETWEEN PRINCIPAL UNITS (PU) AND ACCESSORY UNITS (AU) ARE DEFINED TO THE CENTRELINE OF BUILDING ELEMENTS INCLUDING WALLS, DOORS, AND INCLUDING THE PRODUCTIONS THEREOF (WHERE APPLICABLE).
- UNLESS SHOWN OTHERWISE THE BOUNDARIES BETWEEN PRINCIPAL UNITS (PU) AND ACCESSORY UNITS (AU) ARE DEFINED TO THE CENTRELINE OF BUILDING ELEMENTS INCLUDING WALLS, DOORS, AND INCLUDING THE PRODUCTIONS THEREOF (WHERE APPLICABLE).
- UNLESS SHOWN OTHERWISE THE BOUNDARIES BETWEEN ACCESSORY UNITS (AU) AND THE COMMON PROPERTY ARE DEFINED TO THE FACE OF KERB AND OFFSET DIMENSIONS THEREFROM.
- DIMENSIONS SHOWN OTHERWISE THE BOUNDARIES BETWEEN PRINCIPAL UNITS (PU) AND ACCESSORY UNITS (AU) AND COMMON PROPERTY ARE DEFINED TO THE CENTRELINE OF BUILDING ELEMENTS INCLUDING WALLS, DOORS, AND INCLUDING THE PRODUCTIONS THEREOF (WHERE APPLICABLE).
- TEXT IN ITALICS IS A DESCRIPTION OF THE BUILDING OR OTHER FEATURE.
- LOT 200 DP 570828 IS A J.O.A.L FORMED AND SEALED. LOT BOUNDARIES ARE ADOPTED FROM DP 570828.



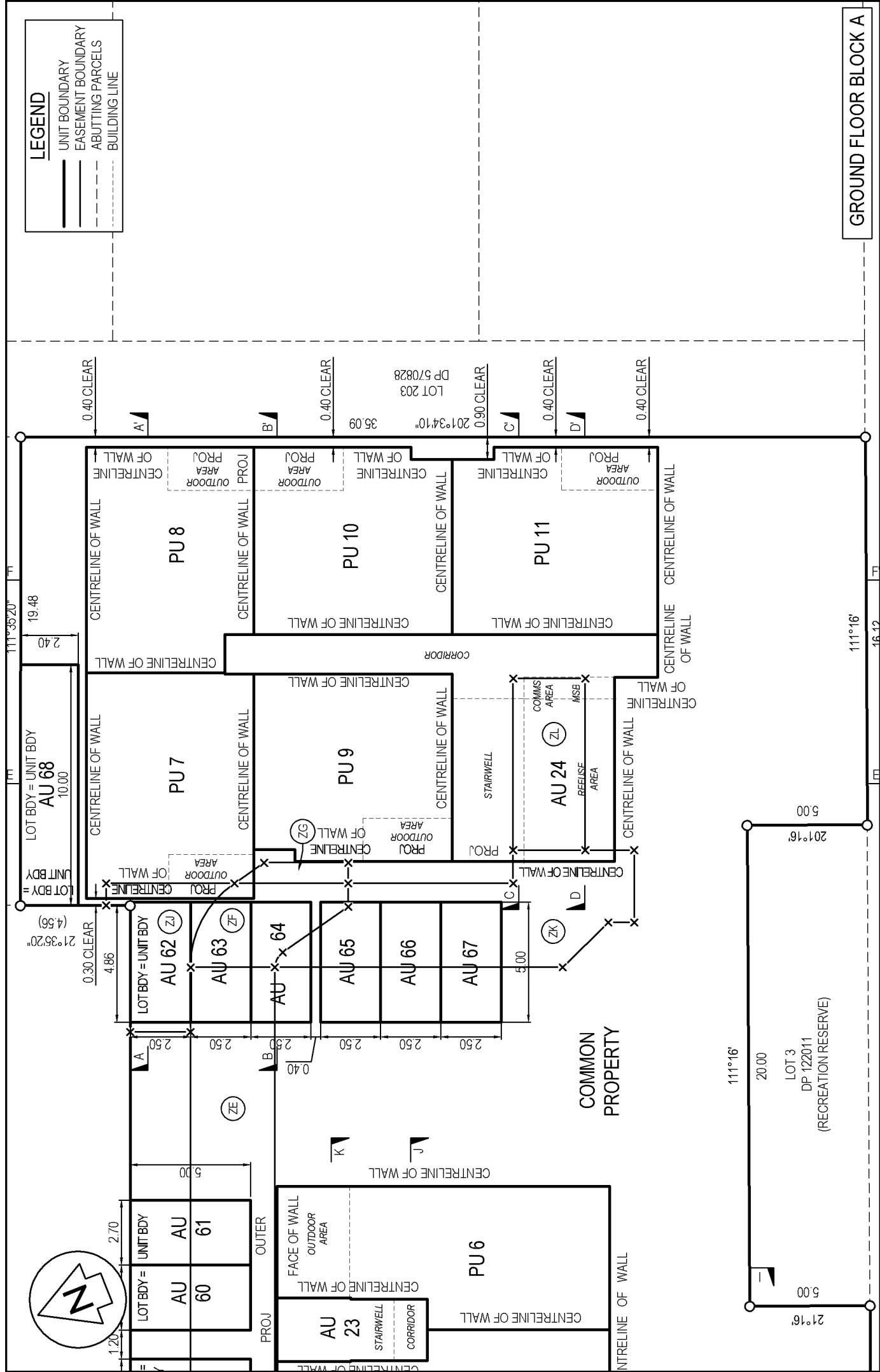
LEGEND

- UNIT BOUNDARY
- EASEMENT BOUNDARY
- ABUTTING PARCELS
- BUILDING LINE

GROUND FLOOR OVERVIEW

LEGEND

- UNIT BOUNDARY
- EASEMENT BOUNDARY
- ABUTTING PARCELS
- BUILDING LINE



GROUND FLOOR BLOCK A

Scale at A4 : 1:200
 Surveyor : Reece Allan Moody
 Maven Ref : 167005 (STAGE 2C)

Sheet 3 of 16
 DP 594579

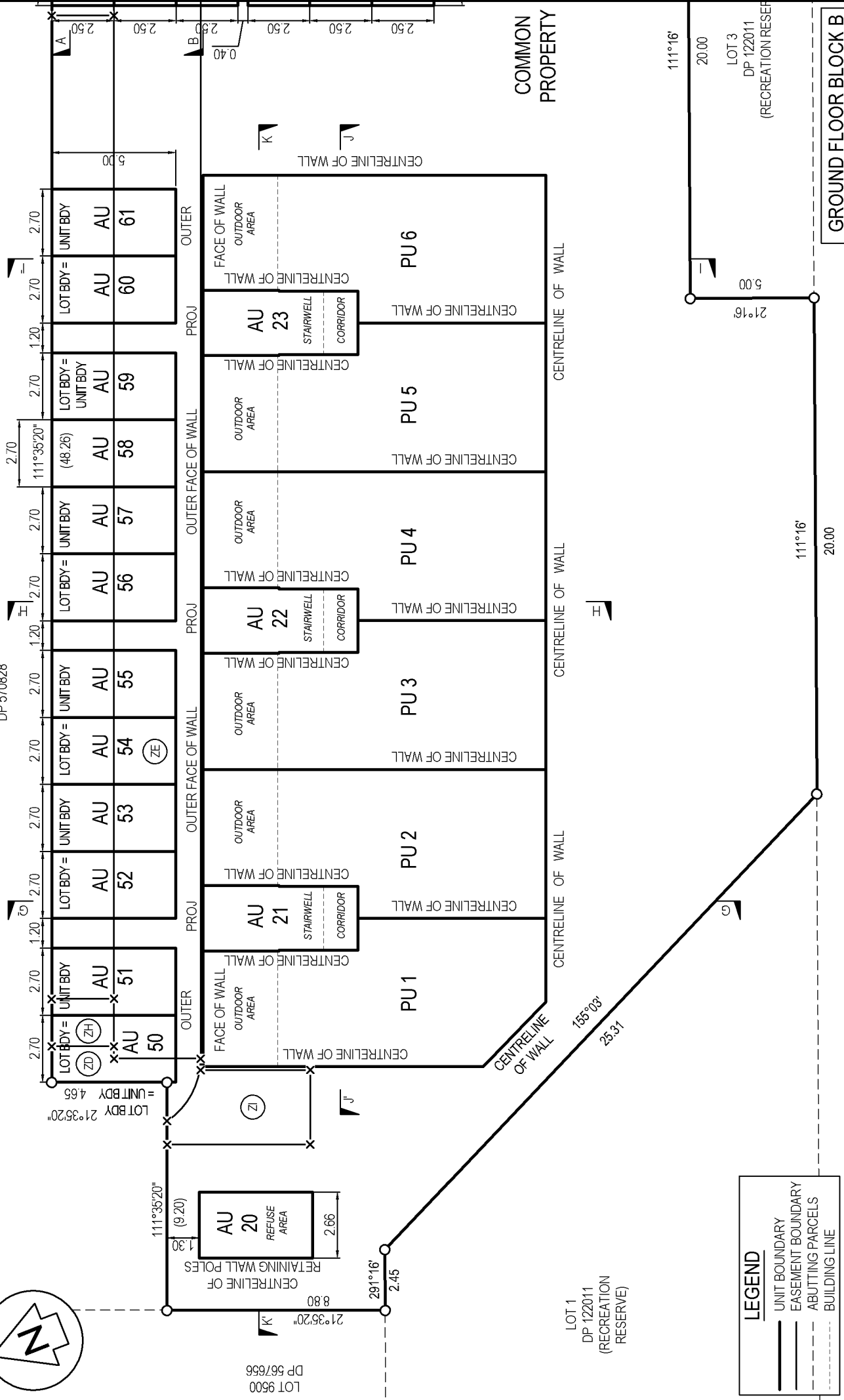
UNITS ON LOT 1005 DP 570828

Land District : North Auckland
 Territorial Authority : Auckland Council
 TA Reference : SUB60379784 (WEST)



21°16' 111°16' 20.00 5.00 201°16' 111°16' 16.12

LOT 200
DP 570828

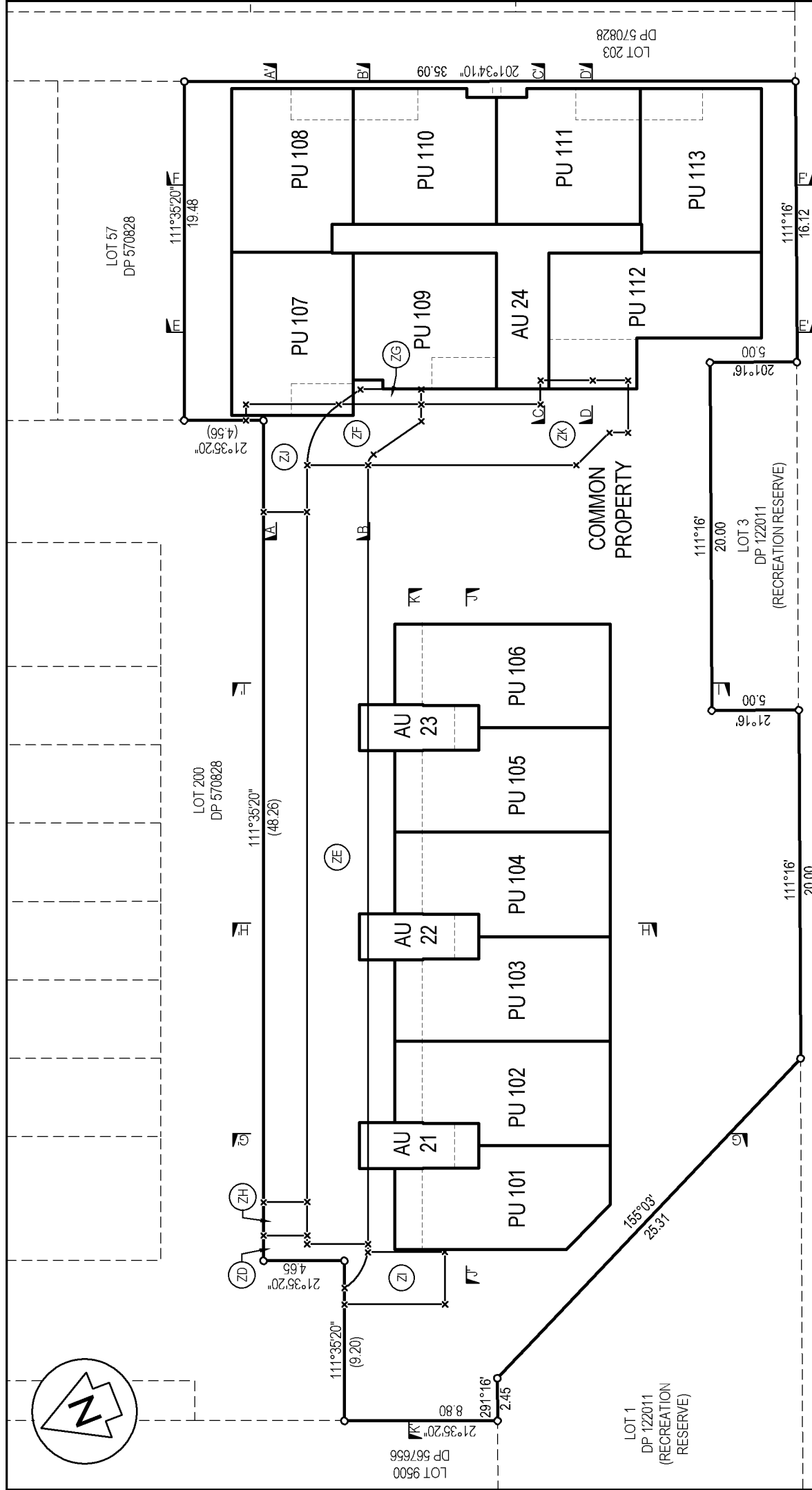
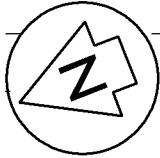


LEGEND

- UNIT BOUNDARY
- EASEMENT BOUNDARY
- - - ABUTTING PARCELS
- - - BUILDING LINE

GROUND FLOOR BLOCK B

	<p>Land District : North Auckland Territorial Authority : Auckland Council TA Reference : SUB60379784 (WEST)</p>	<p>Scale at A4 : 1:200 Surveyor : Reece Allan Moody Maven Ref. : 167005 (STAGE 2C)</p>
	UNITS ON LOT 1005 DP 570828	
		<p>Sheet 4 of 16 DP 594579</p>



LEGEND

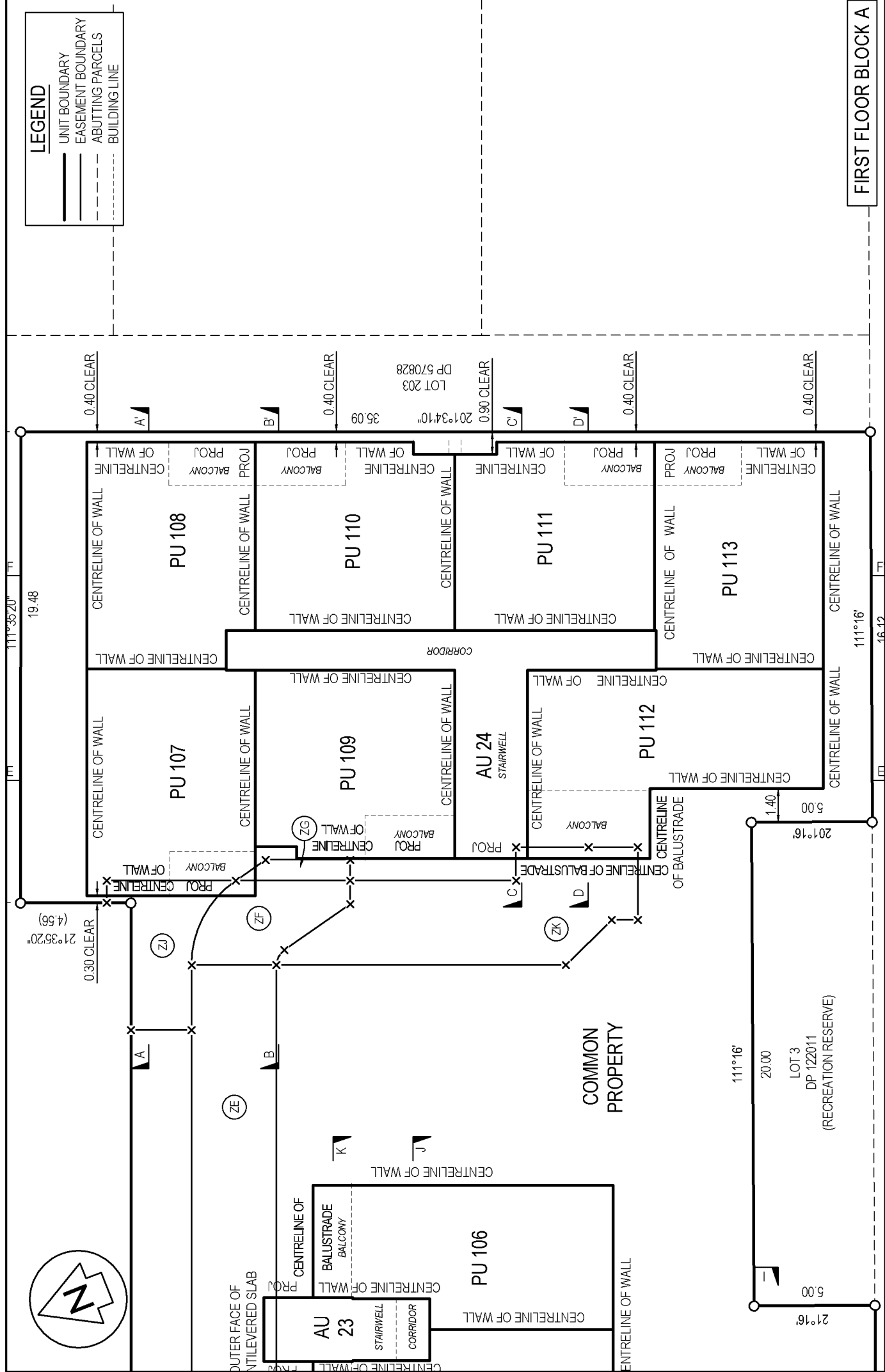
- UNIT BOUNDARY
- - - EASEMENT BOUNDARY
- - - ABUTTING PARCELS
- BUILDING LINE

FIRST FLOOR OVERVIEW

	Land District : North Auckland Territorial Authority : Auckland Council TA Reference : SUB60379784 (WEST)	UNITS ON LOT 1005 DP 570828	Scale at A4 : 1:300 Surveyor : Reece Allan Moody Mavens Ref : 167005 (STAGE 2C)	Sheet 5 of 16 DP 594579
	MARGAN AVENUE (LEGAL ROAD)			

LEGEND

- UNIT BOUNDARY
- EASEMENT BOUNDARY
- ABUTTING PARCELS
- BUILDING LINE



FIRST FLOOR BLOCK A

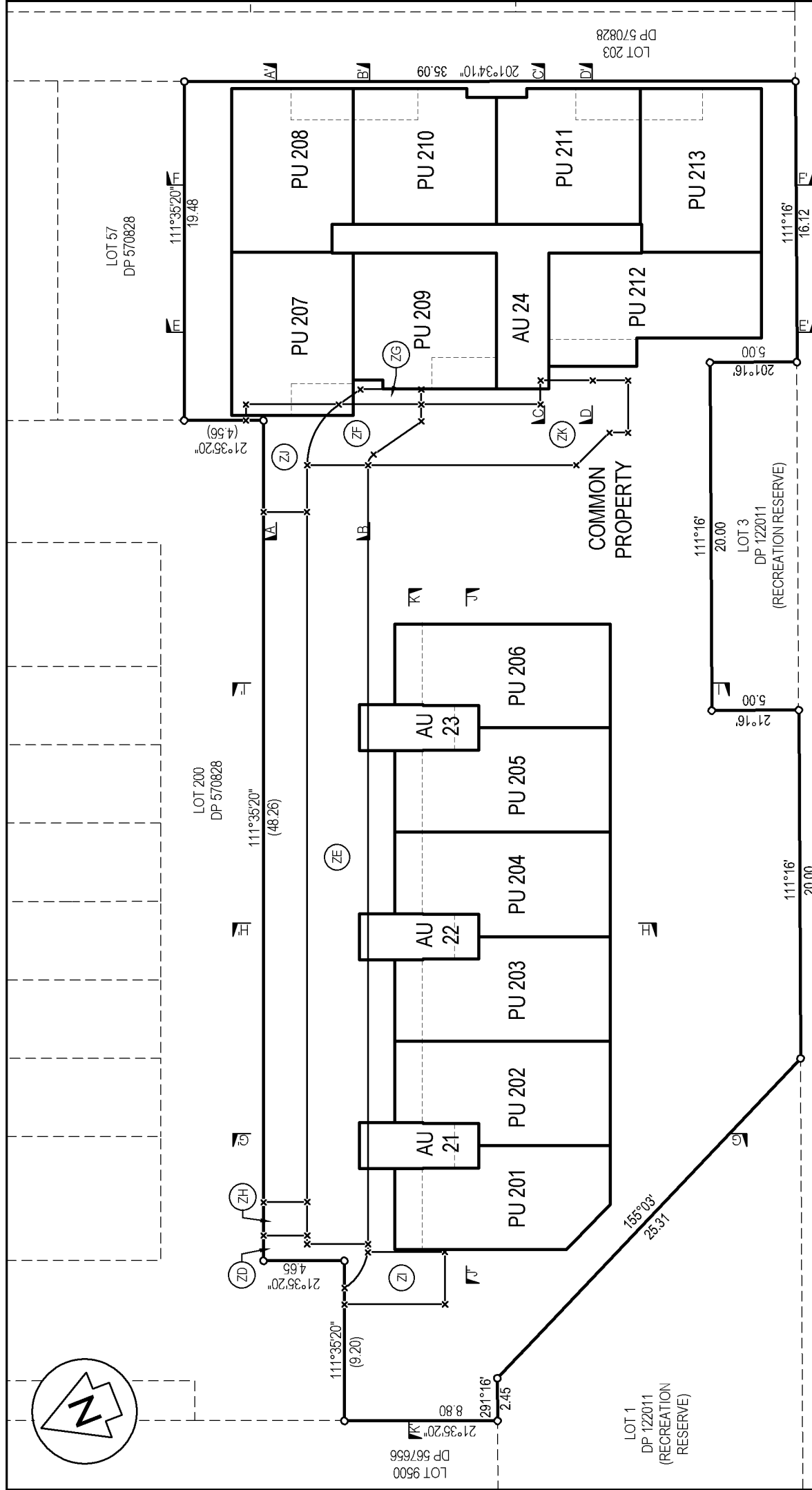
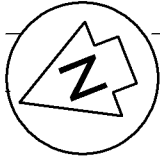
Scale at A4 : 1:200
 Surveyor : Reece Allan Moody
 Maven Ref : 167005 (STAGE 2C)

Sheet 6 of 16
 DP 594579

UNITS ON LOT 1005 DP 570828

Land District : North Auckland
 Territorial Authority : Auckland Council
 TA Reference : SUB6037984 (WEST)





LEGEND

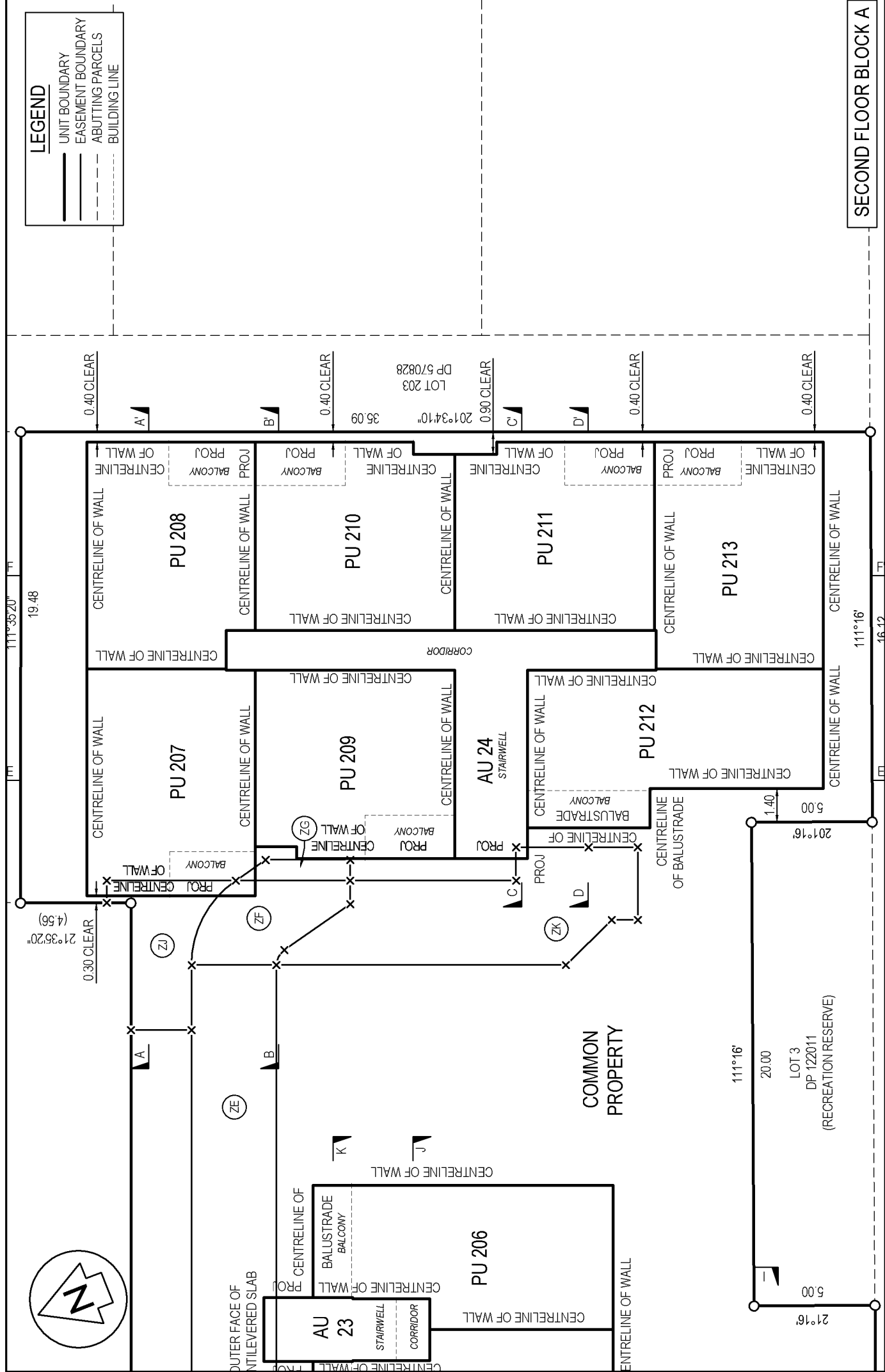
- UNIT BOUNDARY
- EASEMENT BOUNDARY
- ABUTTING PARCELS
- BUILDING LINE

SECOND FLOOR OVERVIEW

	Land District : North Auckland Territorial Authority : Auckland Council TA Reference : SUB60379784 (WEST)	<h1 style="margin: 0;">UNITS ON LOT 1005 DP 570828</h1>	Scale at A4 : 1:300 Surveyor : Reece Allan Moody Maven Ref : 167005 (STAGE 2C)	Sheet 8 of 16 DP 594579
--	---	---	--	----------------------------

LEGEND

- UNIT BOUNDARY
- EASEMENT BOUNDARY
- ABUTTING PARCELS
- BUILDING LINE



SECOND FLOOR BLOCK A

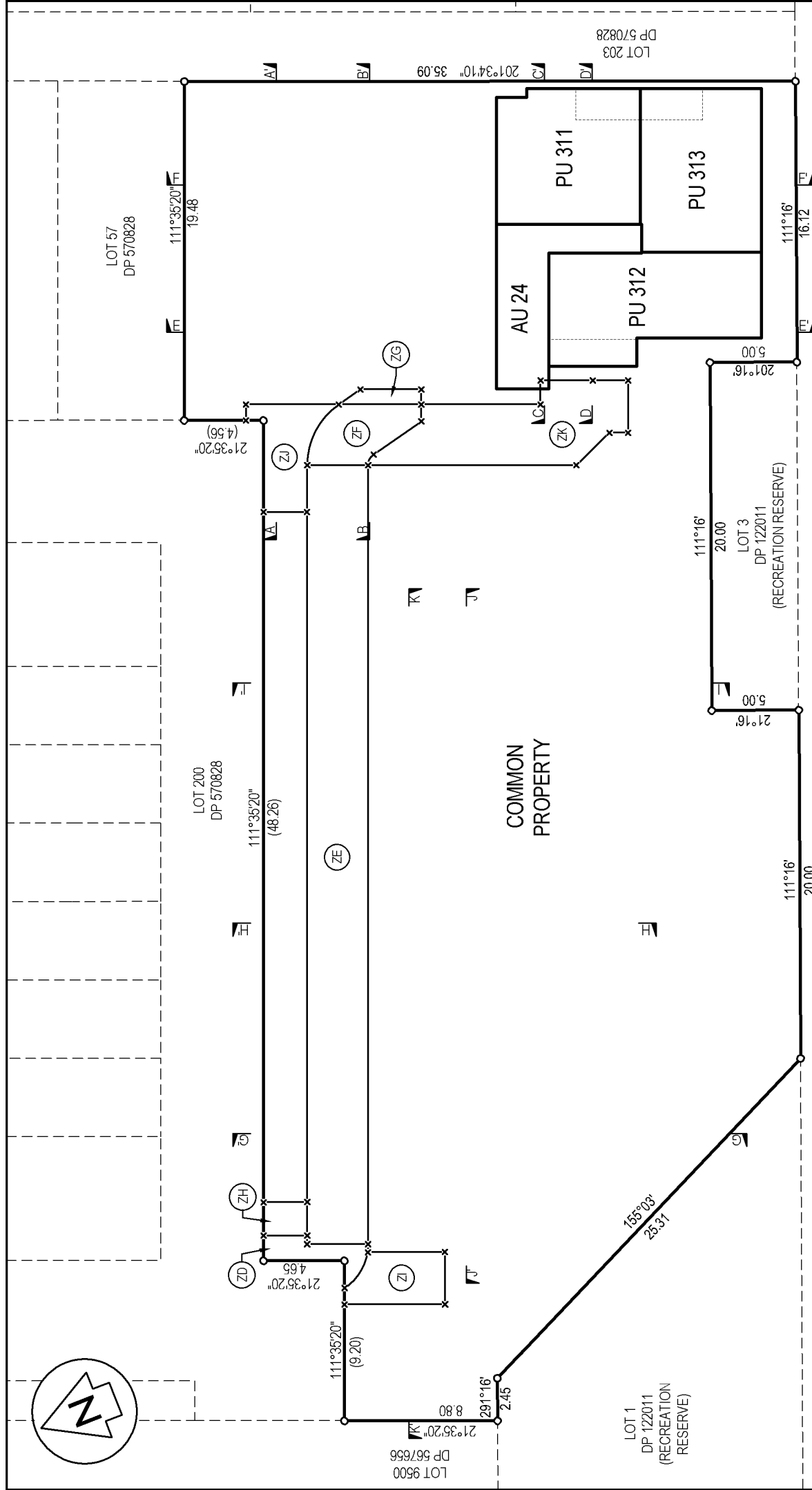
Scale at A4 : 1:200
 Surveyor : Reece Allan Moody
 Maven Ref : 167005 (STAGE 2C)

Sheet 9 of 16
 DP 594579

UNITS ON LOT 1005 DP 570828

Land District : North Auckland
 Territorial Authority : Auckland Council
 TA Reference : SUB6037984 (WEST)




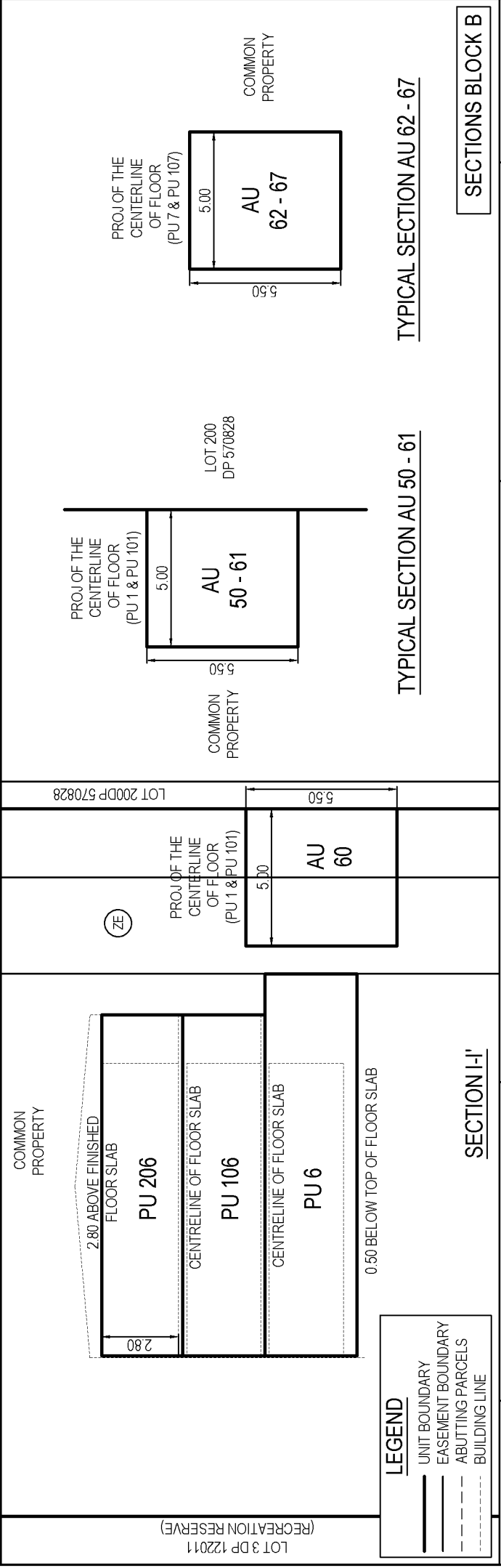
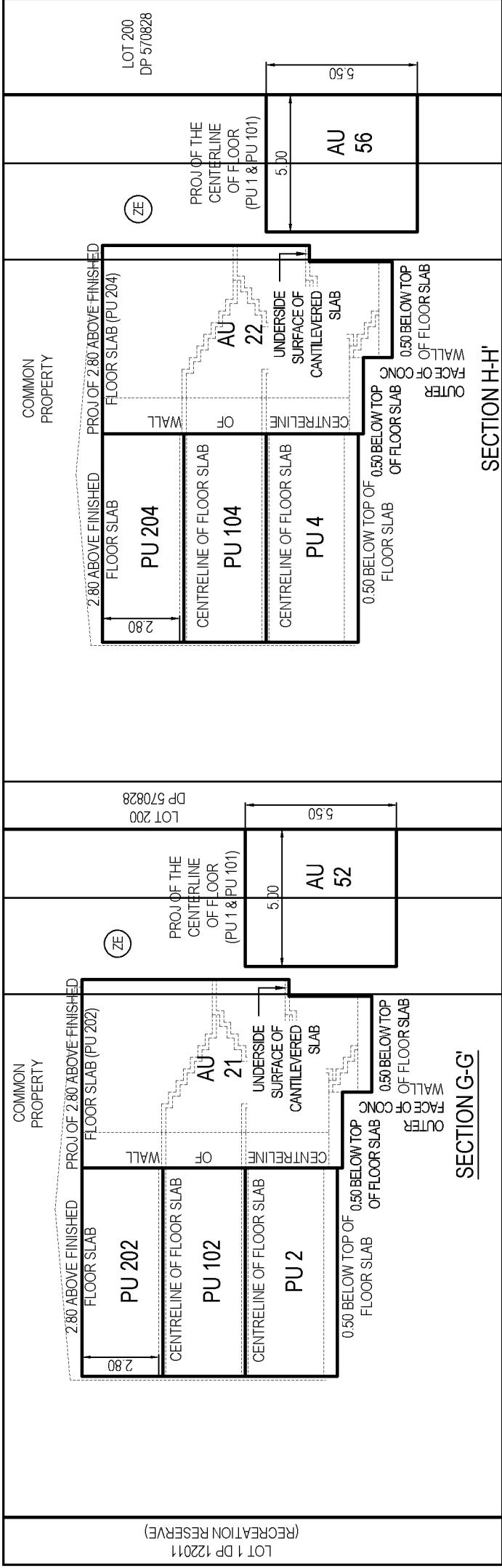


LEGEND

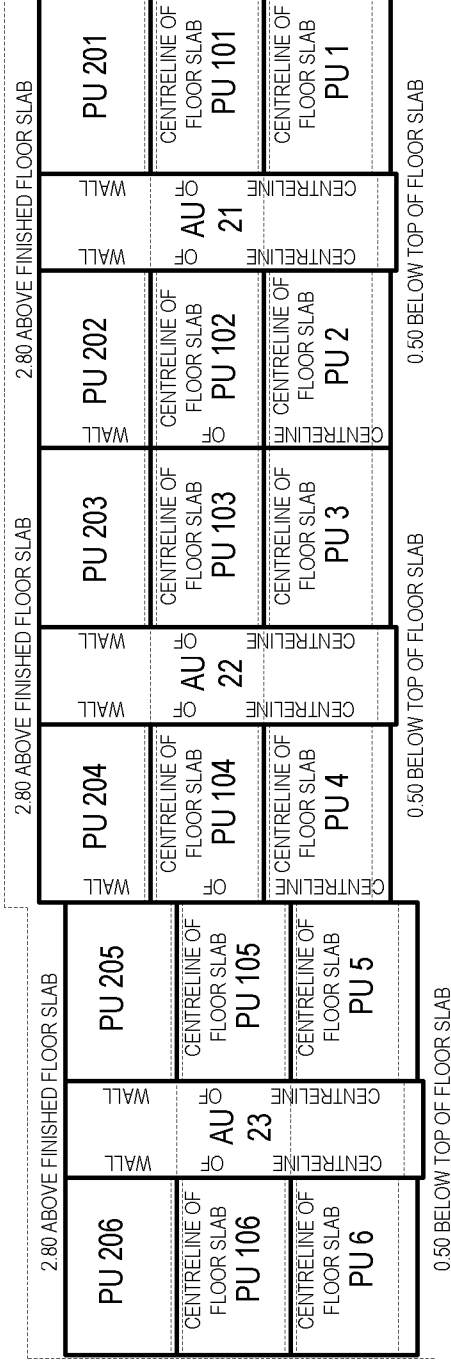
- UNIT BOUNDARY
- EASEMENT BOUNDARY
- - - ABUTTING PARCELS
- · · BUILDING LINE

THIRD FLOOR OVERVIEW

	Land District : North Auckland Territorial Authority : Auckland Council TA Reference : SUB60379784 (WEST)	<h1>UNITS ON LOT 1005 DP 570828</h1>	Scale at A4 : 1:300 Surveyor : Reece Allan Moody Maven Ref. : 167005 (STAGE 2C)	Sheet 11 of 16 DP 594579
---	---	--------------------------------------	---	-----------------------------

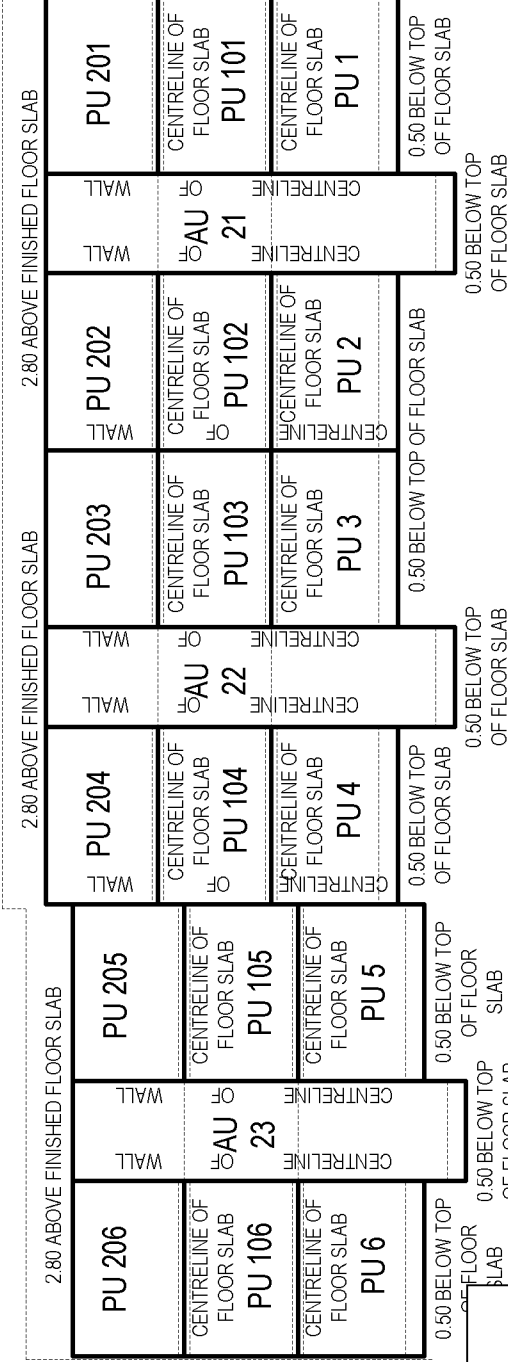


COMMON PROPERTY



SECTION J-J

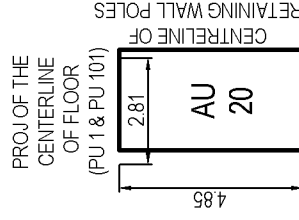
COMMON PROPERTY



SECTION K-K

LEGEND

- UNIT BOUNDARY
- EASEMENT BOUNDARY
- ABUTTING PARCELS
- BUILDING LINE



LOT 9500
DP 567666

SECTIONS BLOCK B

Land District : North Auckland
Territorial Authority : Auckland Council
TA Reference : SUB60379784 (WEST)

UNITS ON LOT 1005 DP 570828

Scale at A4 : 1:200
Surveyor : Reece Allan Moody
Maven Ref. : 167005 (STAGE 2C)

Sheet 16 of 16

DP 594579





LAND DISTRICT

NORTH AUCKLAND

PLAN NUMBER

DP 594579

TERRITORIAL AUTHORITY

AUCKLAND COUNCIL

TERRITORIAL AUTHORITY REFERENCE

SUB60379784 (WEST)

SCHEDULE OF EASEMENTS IN GROSS

PURPOSE	SHOWN	BURDENED LAND	GRANTEE
RIGHT TO CONVEY TELECOMMUNICATIONS	ZD, ZF, ZH, ZI, ZJ, ZK, ZL	LOT 1005 DP 570828	CHORUS NEW ZELAND LIMITED

SCHEDULE OF EXISTING SUBJECT EASEMENTS IN GROSS

PURPOSE	SHOWN	BURDENED LAND	CREATED BY
RIGHT TO CONVEY ELECTRICITY	ZD, ZE, ZF, ZG	LOT 1005 DP 570828	12608266.17

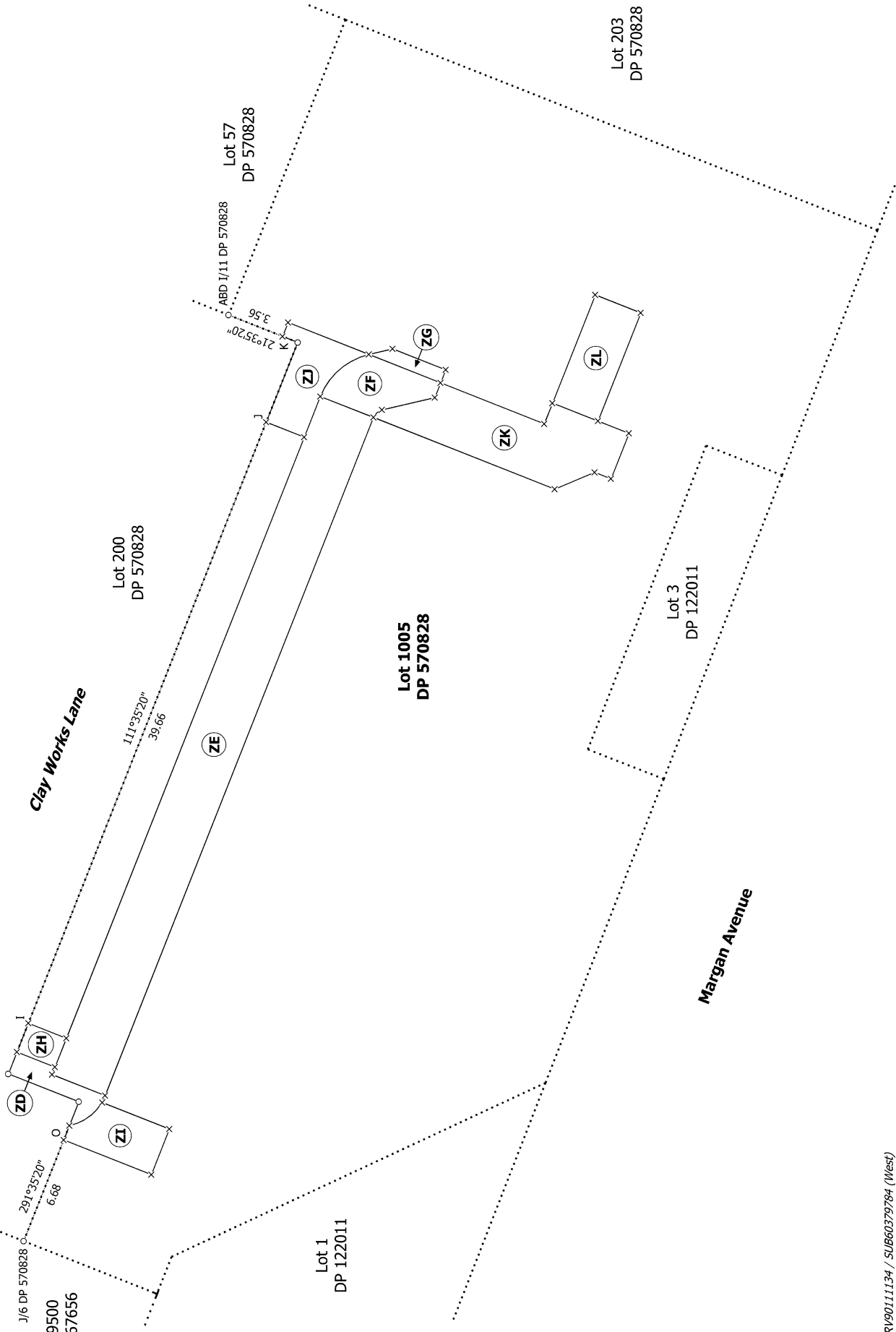
EXISTING APPURTENANT EASEMENTS

THE EXISTING DRAINAGE RIGHTS CREATED BY B878713.4 (PARTIALLY SURRENDERED BY 12409967.2) ARE TO REMAIN

EXISTING LAND COVENANTS TO REMAIN

THE EXISTING LAND COVENANT CREATED BY 12608266.18 IS TO REMAIN

Diag. A



Council Ref: SRV00111134 / SUB60379784 (West)
 Maven Ref: 167005 (Crown Lynn Yards Stage 2C)

Land District: North Auckland

Units on Lot 1005 DP 570828

S 1/1

Surveyor: Reece Allan Moody
 Firm: Maven Associates Limited
 Date of Survey: 1/08/2023

Record of Survey
 DP 594579
 Deposited on: 14/05/2024

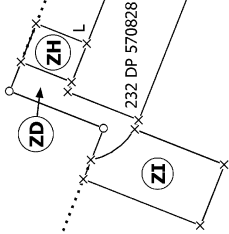
Diag. A
Non Primary



Clay Works Lane

Lot 9500
DP 567656

Lot 200
DP 570828



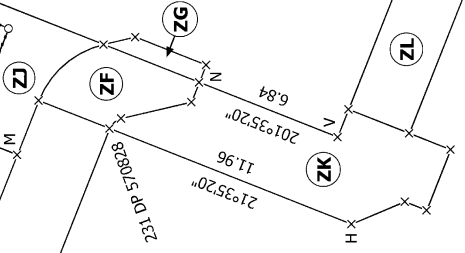
111°35'20"
39.66

291°35'20"
44.74

Lot 57
DP 570828

Lot 1
DP 122011

Lot 1005
DP 570828



Lot 203
DP 570828

Lot 3
DP 122011

Margan Avenue

Council Ref: SRV90111134 / SUB60379784 (West)
Maven Ref: 167005 (Crown Lynn Yards Stage 2C)

Land District: North Auckland

Digitally Generated Plan
Generated on: 20/06/2024 10:35:56 AM Page 25 of 26

Units on Lot 1005 DP 570828

Surveyor: Reece Allan Moody
Firm: Maven Associates Limited
Date of Survey: 1/08/2023

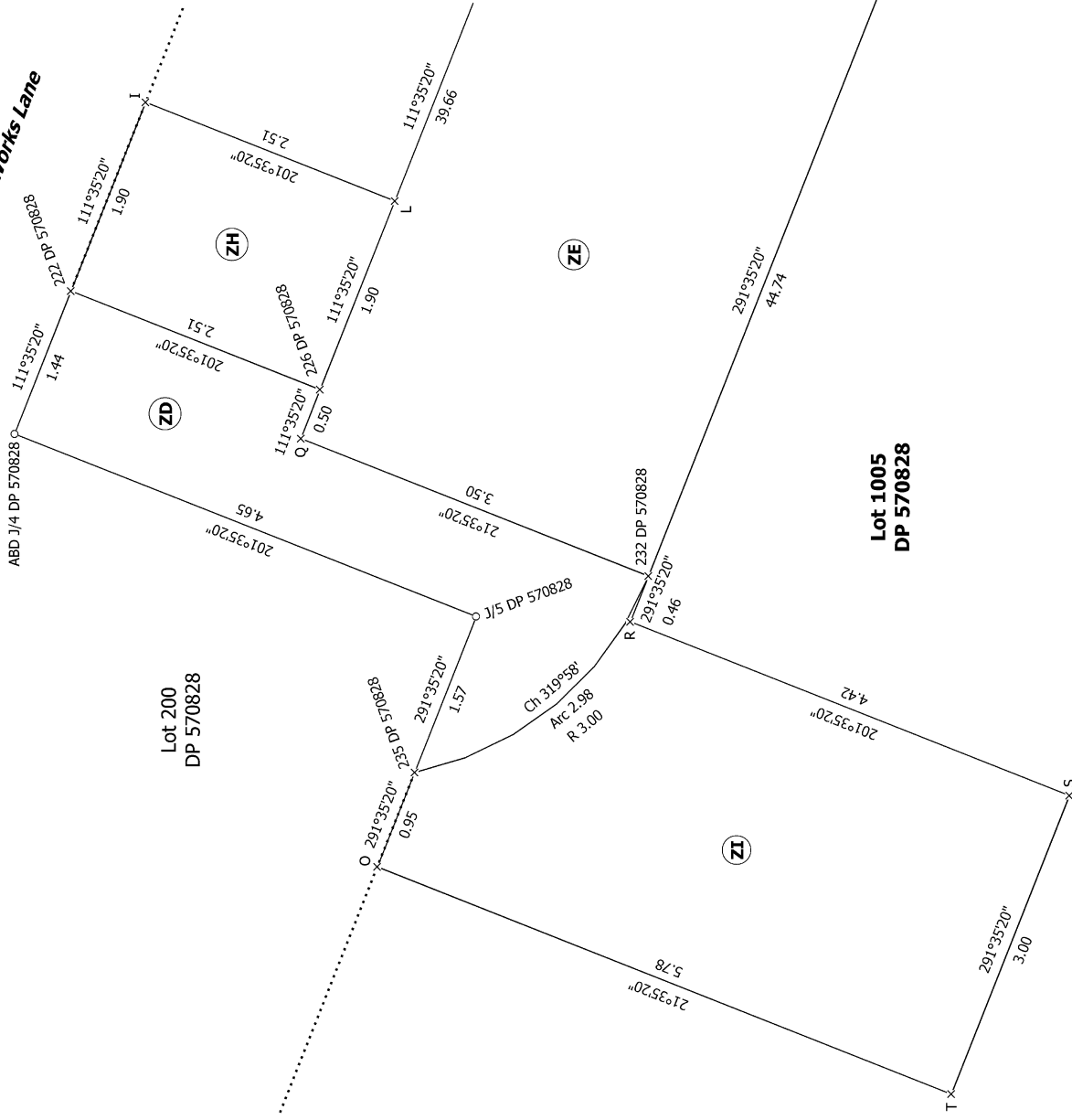
Record of Survey
DP 594579

Deposited on: 14/05/2024

T 1/2

Diag. AA
Non Primary

Clay Works Lane



Lot 200
DP 570828

Lot 1005
DP 570828

Council Ref: SRV00111134 / SUB60379784 (West)
Maven Ref: 167005 (Crown Lynn Yards Stage 2C)

Land District: North Auckland

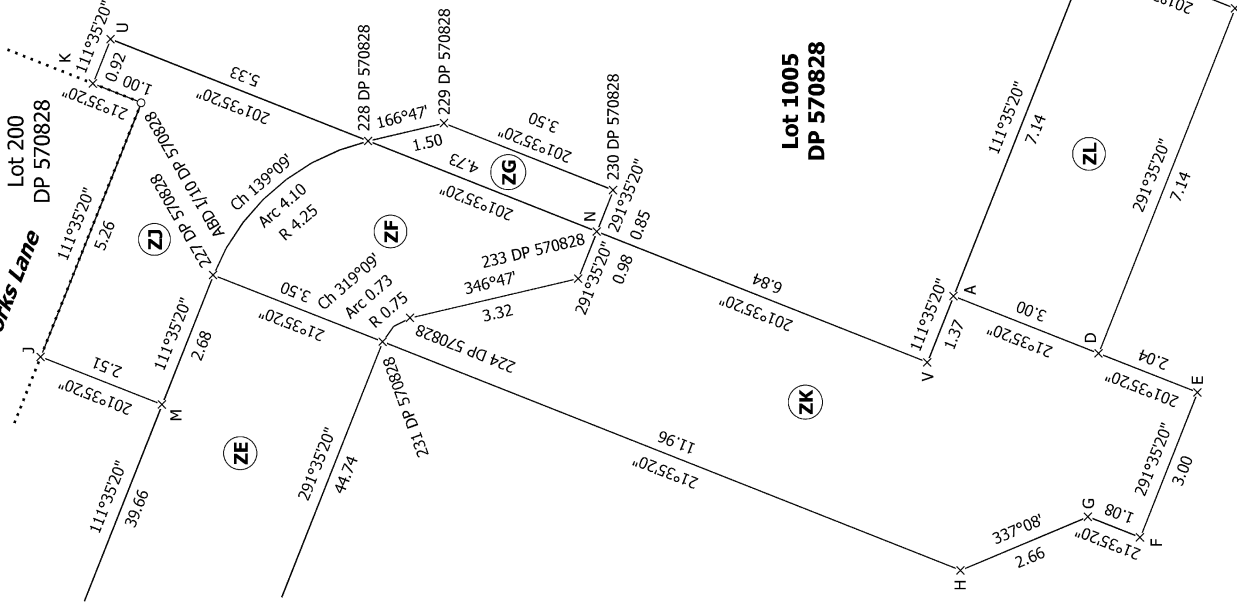
Digitally Generated Plan

Generated on: 20/06/2024 10:35:56 AM Page 26 of 26

Units on Lot 1005 DP 570828

Diag. AB
Non Primary

Clay Works Lane



Lot 1005
DP 570828

Surveyor: Reece Allan Moody
Firm: Maven Associates Limited
Date of Survey: 1/08/2023

Record of Survey
DP 594579

Deposited on: 14/05/2024

