



Record of Survey - DP 525392

Survey Number DP 525392
Surveyor Reference 13027.05 (Kaipi Holdings Ltd)
Surveyor Keith Murray Preston
Survey Firm BTW Company (New Plymouth)
Surveyor Declaration I Keith Murray Preston, being a licensed cadastral surveyor, certify that--
(a) this dataset provided by me and its related survey are accurate, correct and in accordance with the Cadastral Survey Act 2002 and Cadastral Survey Rules 2021; and
(b) the survey was undertaken by me or under my personal direction.
Declared on 23 Apr 2024 10:48 AM

Survey Details

Dataset Description Lots 1 - 4 being a Subdivision of Lots 1 - 4 DP 467908
Purpose LT Subdivision
Status Deposited **Type** Survey
Land District Taranaki **Survey Class** Class B
Meridional Circuit Taranaki 2000 **Vertical Datum** None

Survey Dates

Surveyed Date 07/06/2018 **Certified Date** 23/04/2024
Submitted Date 23/04/2024 10:48:46 **Survey Approval Date** 23/04/2024
Deposit Date 19/02/2024

Referenced Surveys

Survey Number	Land District	Bearing Correction
DP 2265	Taranaki	-0°04'00"
SO 13520	Taranaki	0°00'00"
SO 9957	Taranaki	-0°03'30"
SO 9982	Taranaki	-0°03'30"
DP 467908	Taranaki	0°00'00"

Territorial Authorities

New Plymouth District

Comprised In

RT 1007895
RT 626960
RT 626961

Created Parcels

Parcels	Parcel Intent	Area	RT Reference
Area A Deposited Plan 525392	Easement		
Area B Deposited Plan 525392	Easement		
Area C Deposited Plan 525392	Easement		
Area D Deposited Plan 525392	Easement		
Area E Deposited Plan 525392	Easement		



Record of Survey - DP 525392

Created Parcels

Parcels	Parcel Intent	Area	RT Reference
Lot 1 Deposited Plan 525392	Fee Simple Title	11.1613 Ha	840937
Lot 2 Deposited Plan 525392	Fee Simple Title	13.8004 Ha	840938
Lot 3 Deposited Plan 525392	Fee Simple Title	6.7574 Ha	840939
Lot 4 Deposited Plan 525392	Fee Simple Title	2.5822 Ha	840939
Esplanade Strip F Deposited Plan 525392	Esplanade Strip		
Esplanade Strip G Deposited Plan 525392	Esplanade Strip		
Esplanade Strip H Deposited Plan 525392	Esplanade Strip		
Esplanade Strip I Deposited Plan 525392	Esplanade Strip		
Total Area		<hr/> 34.3013 Ha	

Mark and Vector

Survey Number DP 525392

Meridional Circuit Taranaki 2000

From	To	Code	Bearing	Adpt Surv	Bearing Correction	Distance	Adpt Surv	Class
IT V DP 467908	NAIL IV DP 467908	ob0	79°20'00" M			113.22 M		
IT V DP 467908	IT II DP 467908	ob1	182°43'03" M			647.91 M		
IT V DP 467908	IT I DP 467908	ob2	142°06'40" M			484.91 M		
IT II DP 467908	IBAR VI DP 467908	ob39	353°23'20" A	DP 467908	0°00'00"	455.65 A	DP 467908	
IBAR VI DP 467908	IT V DP 467908	ob65	23°08'50" A	DP 467908	0°00'00"	211.60 A	DP 467908	
IT I DP 467908	NAIL IV DP 467908	ob63	335°11'50" C			444.67 C		
IT II DP 467908	PEG AD DP 467908	ob40	244°52'20" A	DP 467908	0°00'00"	11.00 A	DP 467908	
PEG AD DP 467908	DISK A DP 525392	ob67	81°43'00" C			2.91 C		Class B
DISK A DP 525392	DISK B DP 525392	ob68	72°06'00" C			29.38 C		Class B
DISK B DP 525392	DISK C DP 525392	ob69	70°38'00" C			27.17 C		Class B
DISK C DP 525392	DISK D DP 525392	ob70	77°45'00" C			24.20 C		Class B
DISK D DP 525392	DISK E DP 525392	ob71	124°29'00" C			5.66 C		Class B
DISK E DP 525392	DISK F DP 525392	ob72	151°47'00" C			3.74 C		Class B
DISK F DP 525392	DISK G DP 525392	ob73	72°58'00" C			19.73 C		Class B
DISK G DP 525392	DISK H DP 525392	ob74	58°02'20" C			60.02 C		Class B
DISK H DP 525392	DISK I DP 525392	ob75	41°39'00" C			10.70 C		Class B
DISK I DP 525392	DISK J DP 525392	ob76	12°02'00" C			13.30 C		Class B
DISK J DP 525392	DISK K DP 525392	ob77	355°53'00" C			15.22 C		Class B
DISK K DP 525392	DISK L DP 525392	ob78	339°23'00" C			23.12 C		Class B
DISK L DP 525392	DISK M DP 525392	ob79	297°29'00" C			10.30 C		Class B
DISK M DP 525392	DISK N DP 525392	ob80	334°39'00" C			31.86 C		Class B
DISK N DP 525392	DISK O DP 525392	ob81	338°36'00" C			23.16 C		Class B
DISK O DP 525392	DISK P DP 525392	ob82	349°48'00" C			11.72 C		Class B
DISK P DP 525392	DISK Q DP 525392	ob83	12°38'00" C			16.42 C		Class B

Mark and Vector

Survey Number DP 525392

Meridional Circuit Taranaki 2000

From	To	Code	Bearing	Adpt Surv	Bearing Correction	Distance	Adpt Surv	Class
DISK Q DP 525392	DISK R DP 525392	ob84	348°15'00"	C		48.56 C		Class B
DISK R DP 525392	DISK S DP 525392	ob85	323°00'00"	C		32.73 C		Class B
DISK S DP 525392	DISK T DP 525392	ob86	329°25'00"	C		14.77 C		Class B
DISK T DP 525392	DISK U DP 525392	ob87	342°53'00"	C		9.74 C		Class B
DISK U DP 525392	DISK V DP 525392	ob88	358°19'00"	C		16.94 C		Class B
DISK V DP 525392	DISK W DP 525392	ob89	35°13'00"	C		43.14 C		Class B
DISK W DP 525392	DISK X DP 525392	ob90	23°12'00"	C		6.44 C		Class B
DISK X DP 525392	DISK Y DP 525392	ob91	0°59'00"	C		9.74 C		Class B
DISK Y DP 525392	DISK Z DP 525392	ob92	340°02'00"	C		34.63 C		Class B
DISK Z DP 525392	PEG BD DP 525392	ob93	1°58'00"	C		16.97 C		Class B
PEG BD DP 525392	DISK AA DP 525392	ob154	1°58'00"	C		0.94 C		Class B
DISK AA DP 525392	DISK AB DP 525392	ob94	35°17'00"	C		10.24 C		Class B
DISK AB DP 525392	DISK AC DP 525392	ob95	15°30'00"	C		23.67 C		Class B
DISK AC DP 525392	DISK AD DP 525392	ob96	352°35'00"	C		19.11 C		Class B
DISK AD DP 525392	DISK AE DP 525392	ob97	12°14'00"	C		6.38 C		Class B
DISK AE DP 525392	DISK AF DP 525392	ob98	336°44'00"	C		17.03 C		Class B
DISK AF DP 525392	DISK AG DP 525392	ob99	346°25'00"	C		23.22 C		Class B
DISK AG DP 525392	DISK AH DP 525392	ob100	0°18'00"	C		6.14 C		Class B
DISK AH DP 525392	DISK AI DP 525392	ob101	313°47'00"	C		25.34 C		Class B
DISK AI DP 525392	DISK AJ DP 525392	ob102	299°23'00"	C		8.18 C		Class B
DISK AJ DP 525392	IT V DP 467908	ob103	343°20'20"	M		125.76 M		
DISK AJ DP 525392	UNMK 12 DP 525392	ob104	330°49'00"	C		4.31 C		Class B
UNMK 12 DP 525392	UNMK 121 DP 525392	ob199	330°49'00"	C		2.17 C		Class B
UNMK 121 DP 525392	POST O DP 467908	ob198	330°49'00"	C		15.04 C		Class B

Mark and Vector

Survey Number DP 525392

Meridional Circuit Taranaki 2000

From	To	Code	Bearing	Adpt Surv	Bearing Correction	Distance	Adpt Surv	Class
POST O DP 467908	POST N DP 467908	ob105	327°44'00"	A DP 467908	0°00'00"	25.21 A	DP 467908	Class B
POST N DP 467908	POST M DP 467908	ob106	343°07'00"	A DP 467908	0°00'00"	31.29 A	DP 467908	Class B
POST M DP 467908	POST I DP 467908	ob107	352°03'00"	A DP 467908	0°00'00"	11.49 A	DP 467908	Class B
POST I DP 467908	IT V DP 467908	ob108	357°54'00"	A DP 467908	0°00'00"	39.08 A	DP 467908	
IT V DP 467908	DISK AK DP 525392	ob3	194°12'00"	M		44.01 M		
DISK AK DP 525392	PEG AL DP 525392	ob109	264°54'00"	C		29.90 C		Class B
PEG AL DP 525392	PEG AM DP 525392	ob111	239°10'00"	C		4.41 C		Class B
PEG AM DP 525392	PEG AN DP 525392	ob112	174°28'00"	C		34.94 C		Class B
PEG AN DP 525392	DISK AO DP 525392	ob113	125°55'00"	C		5.77 C		Class B
DISK AO DP 525392	DISK AP DP 525392	ob114	84°36'00"	C		23.39 C		Class B
DISK AP DP 525392	PEG AQ DP 525392	ob115	144°15'00"	C		8.07 C		Class B
PEG AQ DP 525392	UNMK 8 DP 525392	ob116	94°49'00"	C		6.75 C		Class B
UNMK 8 DP 525392	PEG AR DP 525392	ob180	94°49'00"	C		2.57 C		Class B
PEG AR DP 525392	PEG AS DP 525392	ob117	158°21'00"	C		11.45 C		Class B
PEG AS DP 525392	PEG AT DP 525392	ob118	175°29'00"	C		13.27 C		Class B
PEG AT DP 525392	UNMK 18 DP 525392	ob119	219°46'20"	C		4.39 C		Class B
UNMK 18 DP 525392	UNMK 19 DP 525392	ob194	219°46'20"	C		2.89 C		Class B
UNMK 19 DP 525392	UNMK 14 DP 525392	ob196	219°46'20"	C		13.40 C		Class B
UNMK 14 DP 525392	UNMK 13 DP 525392	ob185	219°46'20"	C		2.31 C		Class B
UNMK 13 DP 525392	UNMK 5 DP 525392	ob183	219°46'20"	C		17.01 C		Class B
UNMK 5 DP 525392	UNMK 4 DP 525392	ob190	219°46'20"	C		2.07 C		Class B
UNMK 4 DP 525392	PEG AU DP 525392	ob188	219°46'20"	C		10.57 C		Class B
PEG AU DP 525392	PEG AV DP 525392	ob120	274°44'00"	C		4.07 C		Class B
PEG AV DP 525392	PEG AW DP 525392	ob121	313°26'00"	C		4.45 C		Class B

Mark and Vector

Survey Number DP 525392

Meridional Circuit Taranaki 2000

From	To	Code	Bearing	Adpt Surv	Bearing Correction	Distance	Adpt Surv	Class
PEG AW DP 525392	PEG AX DP 525392	ob122	326°29'00"	C		16.40 C		Class B
PEG AX DP 525392	PEG AY DP 525392	ob123	302°34'00"	C		7.97 C		Class B
PEG AY DP 525392	PEG AZ DP 525392	ob124	276°49'00"	C		6.92 C		Class B
PEG AZ DP 525392	UNMK 10 DP 525392	ob125	247°17'00"	C		1.87 C		Class B
UNMK 10 DP 525392	UNMK 3 DP 525392	ob182	247°17'00"	C		6.55 C		Class B
UNMK 3 DP 525392	PEG BA DP 525392	ob178	247°17'00"	C		17.34 C		Class B
PEG BA DP 525392	PEG BB DP 525392	ob126	200°16'00"	C		12.50 C		Class B
PEG BB DP 525392	PEG BC DP 525392	ob127	290°59'00"	C		17.22 C		Class B
PEG BC DP 525392	IT V DP 467908	ob128	34°21'20"	M		179.92 M		
DISK AK DP 525392	IBAR F DP 467908	ob110	16°45'00"	C		40.06 C		Class B
IBAR F DP 467908	UNMK DP 467908	ob130	28°27'00"	A DP 467908	0°00'00"	28.39 A DP 467908		Class B
UNMK DP 467908	PEG B DP 467908	ob131	28°27'00"	A DP 467908	0°00'00"	14.28 A DP 467908		Class B
PEG B DP 467908	IT C DP 467908	ob132	54°09'00"	A DP 467908	0°00'00"	14.80 A DP 467908		Class B
IT C DP 467908	PEG AA DP 467908	ob133	62°55'00"	A DP 467908	0°00'00"	66.35 A DP 467908		Class B
PEG AA DP 467908	NAIL IV DP 467908	ob134	159°30'30"	A DP 467908	0°00'00"	54.59 A DP 467908		
PEG AA DP 467908	PEG VII DP 2265	ob135	176°12'00"	A DP 2265	-0°04'00"	6.02 A DP 467908		Class B
PEG VII DP 2265	PEG AB DP 467908	ob137	170°19'00"	A DP 2265	-0°04'00"	7.39 A DP 467908		Class B
PEG AB DP 467908	POST E DP 467908	ob138	274°45'00"	A DP 467908	0°00'00"	5.59 A DP 467908		Class B
POST E DP 467908	POST D DP 467908	ob139	242°25'30"	A DP 467908	0°00'00"	56.40 A DP 467908		Class B
POST D DP 467908	POST A DP 467908	ob140	233°53'00"	A DP 467908	0°00'00"	13.27 A DP 467908		Class B
POST A DP 467908	POST H DP 467908	ob142	202°29'00"	A DP 467908	0°00'00"	39.48 A DP 467908		Class B
POST H DP 467908	POST I DP 467908	ob143	201°27'00"	A DP 467908	0°00'00"	29.99 A DP 467908		Class B
IT I DP 467908	IBAR III DP 467908	ob64	180°04'25"	A DP 467908	0°00'00"	374.48 A DP 467908		
IBAR III DP 467908	IT XIV SO 9957	ob144	180°04'25"	A DP 467908	0°00'00"	12.10 A DP 467908		

Mark and Vector

Survey Number DP 525392

Meridional Circuit Taranaki 2000

From	To	Code	Bearing	Adpt Surv	Bearing Correction	Distance	Adpt Surv	Class
IT XIV SO 9957	IT II DP 467908	ob145	290°25'00"	A DP 467908	0°00'00"	350.01 A	DP 467908	
IBAR VI DP 467908	PEG AC DP 467908	ob66	111°02'20"	A DP 467908	0°00'00"	146.56 A	DP 467908	
PEG AC DP 467908	PEG BD DP 525392	ob146	68°23'00"	A DP 2265	-0°04'00"	9.52 C		
PEG BD DP 525392	PEG DP 2265	ob155	68°23'00"	A DP 2265	-0°04'00"	131.73 C		Class B
PEG DP 2265	PEG SO 13520	ob156	328°39'30"	A DP 2265	-0°04'00"	127.72 A	DP 467908	Class B
PEG SO 13520	PEG AB DP 467908	ob158	350°19'00"	A DP 2265	-0°04'00"	146.95 A	DP 467908	Class B
PEG DP 2265	PEG SO 380	ob157	148°39'30"	A DP 2265	-0°04'00"	283.78 A	DP 467908	Class B
PEG SO 380	PEG SO 380	ob159	241°36'30"	A SO 9982	-0°03'30"	85.36 A	SO 9982	Class B
PEG SO 380	PEG SO 380	ob160	177°29'50"	A SO 9982	-0°03'30"	87.89 A	SO 9982	Class B
PEG SO 380	PEG SO 380	ob161	178°08'00"	A SO 9982	-0°03'30"	118.27 A	SO 9982	Class B
PEG SO 380	PEG SO 9957	ob162	176°14'20"	A SO 9957	-0°03'30"	64.49 A	SO 9957	Class B
PEG SO 9957	PEG SO 9957	ob163	248°11'30"	A SO 9957	-0°03'30"	389.69 A	SO 9957	Class BD
PEG SO 9957	UNMK SO 9957	ob164	344°57'30"	A SO 9957	-0°03'30"	27.06 A	SO 9957	Class BD
UNMK SO 9957	UNMK DP 467908	ob165	10°43'40"	A DP 467908	0°00'00"	213.86 A	DP 467908	
UNMK DP 467908	UNMK DP 467908	ob166	73°52'00"	A DP 467908	0°00'00"	15.20 A	DP 467908	Class BD
UNMK DP 467908	PEG AD DP 467908	ob167	73°52'00"	A DP 467908	0°00'00"	4.43 A	DP 467908	Class BD
PEG AA DP 467908	PEG VI DP 2265	ob136	356°12'00"	A DP 2265	-0°04'00"	152.45 A	DP 467908	Class B
PEG VI DP 2265	PEG V DP 2265	ob148	9°29'00"	A DP 2265	-0°04'00"	143.65 A	DP 2265	Class B
PEG V DP 2265	PEG IV DP 2265	ob149	48°21'00"	A DP 2265	-0°04'00"	178.94 A	DP 2265	Class B
PEG IV DP 2265	PEG DP 2265	ob168	349°31'45"	A DP 2265	-0°04'00"	123.20 A	DP 2265	Class B
PEG DP 2265	UNMK DP 467908	ob169	256°15'00"	A DP 2265	-0°04'00"	38.08 A	DP 467908	Class B
UNMK DP 467908	PEG DP 2265	ob170	256°15'00"	A DP 2265	-0°04'00"	9.42 A	DP 467908	Class B
PEG DP 2265	UNMK DP 2265	ob171	280°09'30"	A DP 2265	-0°04'00"	15.71 A	DP 2265	Class BD
UNMK DP 2265	UNMK DP 467908	ob172	202°04'40"	A DP 467908	0°00'00"	740.45 A	DP 467908	
UNMK DP 467908	PEG L DP 467908	ob175	85°03'00"	A DP 467908	0°00'00"	21.31 A	DP 467908	
PEG L DP 467908	IBAR VI DP 467908	ob176	178°10'00"	A DP 467908	0°00'00"	109.04 A	DP 467908	
UNMK 2 DP 525392	UNMK DP 467908	ob177	2°53'20"	C		50.72 C		
IT II DP 467908	DISK A DP 525392	ob41	239°01'00"	M		8.26 M		
IT II DP 467908	DISK B DP 525392	ob42	77°07'00"	M		21.42 M		

Mark and Vector

Survey Number DP 525392

Meridional Circuit Taranaki 2000

From	To	Code	Bearing	Adpt Surv	Bearing Correction	Distance	Adpt Surv	Class
IT II DP 467908	DISK C DP 525392	ob43	73°29'00" M			48.51 M		
IT II DP 467908	DISK D DP 525392	ob44	74°54'20" M			72.67 M		
IT II DP 467908	DISK E DP 525392	ob45	78°08'20" M			76.46 M		
IT II DP 467908	DISK F DP 525392	ob46	80°47'20" M			77.59 M		
IT II DP 467908	DISK G DP 525392	ob47	79°12'20" M			97.18 M		
IT II DP 467908	DISK H DP 525392	ob48	71°09'00" M			154.67 M		
IT II DP 467908	DISK I DP 525392	ob49	69°18'40" M			164.07 M		
IT II DP 467908	DISK J DP 525392	ob50	65°34'20" M			171.63 M		
IT II DP 467908	DISK K DP 525392	ob51	60°57'40" M			177.48 M		
IT II DP 467908	DISK L DP 525392	ob52	53°45'20" M			182.31 M		
IT II DP 467908	DISK M DP 525392	ob53	50°46'40" M			177.99 M		
IT II DP 467908	DISK N DP 525392	ob54	41°19'00" M			188.19 M		
IT II DP 467908	DISK O DP 525392	ob55	35°24'20" M			199.87 M		
IT II DP 467908	DISK P DP 525392	ob56	33°06'10" M			208.24 M		
IT II DP 467908	DISK Q DP 525392	ob57	31°37'50" M			223.69 M		
IT II DP 467908	DISK R DP 525392	ob58	24°17'30" M			261.12 M		
IT II DP 467908	DISK S DP 525392	ob59	18°22'20" M			278.33 M		
IT II DP 467908	DISK T DP 525392	ob60	16°09'30" M			288.24 M		
IT II DP 467908	DISK U DP 525392	ob61	15°07'30" M			296.43 M		
IT II DP 467908	DISK V DP 525392	ob62	14°13'40" M			312.69 M		
IT V DP 467908	DISK W DP 525392	ob4	167°03'10" M			316.90 M		
IT V DP 467908	DISK X DP 525392	ob5	166°21'10" M			311.72 M		
IT V DP 467908	DISK Y DP 525392	ob6	165°53'10" M			302.31 M		
IT V DP 467908	DISK Z DP 525392	ob7	166°38'30" M			267.88 M		

Mark and Vector

Survey Number DP 525392

Meridional Circuit Taranaki 2000

From	To	Code	Bearing	Adpt Surv	Bearing Correction	Distance	Adpt Surv	Class
IT V DP 467908	PEG BD DP 525392	ob8	165°37'20" M			251.55 M		
IT V DP 467908	DISK AA DP 525392	ob9	165°33'40" M			250.65 M		
IT V DP 467908	DISK AB DP 525392	ob10	163°43'40" M			244.16 M		
IT V DP 467908	DISK AC DP 525392	ob11	160°32'30" M			224.38 M		
IT V DP 467908	DISK AD DP 525392	ob12	159°26'00" M			205.73 M		
IT V DP 467908	DISK AE DP 525392	ob13	158°26'40" M			200.40 M		
IT V DP 467908	DISK AF DP 525392	ob14	158°36'20" M			183.38 M		
IT V DP 467908	DISK AG DP 525392	ob15	157°28'40" M			160.40 M		
IT V DP 467908	DISK AH DP 525392	ob16	156°35'40" M			154.76 M		
IT V DP 467908	DISK AI DP 525392	ob17	160°52'00" M			131.77 M		
IT V DP 467908	PEG AL DP 525392	ob18	221°50'20" M			60.83 M		
IT V DP 467908	PEG AM DP 525392	ob19	222°59'40" M			65.06 M		
IT V DP 467908	PEG AN DP 525392	ob20	206°27'40" M			92.00 M		
IT V DP 467908	DISK AO DP 525392	ob21	202°57'20" M			93.12 M		
IT V DP 467908	DISK AP DP 525392	ob22	188°52'00" M			84.55 M		
IT V DP 467908	PEG AQ DP 525392	ob23	185°16'40" M			90.48 M		
IT V DP 467908	PEG AR DP 525392	ob24	179°23'20" M			90.88 M		
IT V DP 467908	PEG AS DP 525392	ob25	177°04'20" M			101.65 M		
IT V DP 467908	PEG AT DP 525392	ob26	176°53'20" M			114.92 M		
IT V DP 467908	PEG AU DP 525392	ob27	190°01'40" M			157.61 M		
IT V DP 467908	PEG AV DP 525392	ob28	191°29'40" M			158.04 M		
IT V DP 467908	PEG AW DP 525392	ob29	192°53'00" M			155.73 M		
IT V DP 467908	PEG AX DP 525392	ob30	197°35'00" M			144.91 M		
IT V DP 467908	PEG AY DP 525392	ob31	200°40'20" M			143.06 M		

Mark and Vector

Survey Number DP 525392

Meridional Circuit Taranaki 2000

From	To	Code	Bearing	Adpt Surv	Bearing Correction	Distance	Adpt Surv	Class	
IT V DP 467908	PEG AZ DP 525392	ob32	203°19'40"	M		144.87 M			
IT V DP 467908	PEG BA DP 525392	ob33	209°34'20"	M		164.39 M			
IT V DP 467908	PEG BB DP 525392	ob34	208°55'00"	M		176.73 M			
UNMK 8 DP 525392	UNMK 19 DP 525392	ob181	173°54'00"	C		29.85 C		Class B	
UNMK 4 DP 525392	UNMK 20 DP 525392	ob189	294°40'00"	C		20.33 C		Class B	
UNMK 20 DP 525392	UNMK 21 DP 525392	ob200	310°55'00"	C		21.48 C		Class B	
UNMK 21 DP 525392	UNMK 22 DP 525392	ob201	279°32'40"	C		69.24 C		Class BD	
UNMK 22 DP 525392	UNMK 23 DP 525392	ob202	3°59'00"	C		2.00 C			
UNMK 23 DP 525392	UNMK 24 DP 525392	ob203	99°32'40"	C		66.16 C		Class BD	
UNMK 24 DP 525392	UNMK 25 DP 525392	ob204	310°55'00"	C		3.01 C		Class B	
UNMK 25 DP 525392	UNMK 26 DP 525392	ob205	328°09'00"	C		35.98 C		Class B	
UNMK 26 DP 525392	UNMK 27 DP 525392	ob206	306°44'00"	C		55.26 C		Class BD	
UNMK 27 DP 525392	UNMK 28 DP 525392	ob207	358°06'00"	C		2.56 C			
UNMK 28 DP 525392	UNMK 29 DP 525392	ob208	126°44'00"	C		57.23 C		Class BD	
UNMK 29 DP 525392	UNMK 30 DP 525392	ob209	148°09'00"	C		36.05 C		Class B	
UNMK 30 DP 525392	UNMK 31 DP 525392	ob210	130°55'00"	C		5.99 C		Class B	
UNMK 31 DP 525392	UNMK 14 DP 525392	ob211	99°32'40"	C		48.17 C		Class B	
UNMK 13 DP 525392	UNMK 32 DP 525392	ob184	279°32'40"	C		43.73 C		Class B	
UNMK 32 DP 525392	UNMK 33 DP 525392	ob212	130°55'00"	C		17.92 C		Class B	
UNMK 33 DP 525392	UNMK 5 DP 525392	ob213	114°40'00"	C		20.58 C		Class B	
POST D DP 467908	UNMK DP 467908	ob141	242°26'00"	A	DP 467908	0°00'00"	27.01 A	DP 467908	Class B
UNMK 18 DP 525392	UNMK 121 DP 525392	ob195	83°37'00"	C		29.65 C		Class B	
UNMK 19 DP 525392	UNMK 12 DP 525392	ob197	83°37'00"	C		32.58 C		Class B	
UNMK 3 DP 525392	UNMK 6 DP 525392	ob179	336°25'00"	C		27.02 C		Class B	

Mark and Vector

Survey Number DP 525392

Meridional Circuit Taranaki 2000

From	To	Code	Bearing	Adpt Surv	Bearing Correction	Distance	Adpt Surv	Class
UNMK 6 DP 525392	UNMK 7 DP 525392	ob191	211°40'00"	C		10.52 C		Class B
UNMK 7 DP 525392	UNMK 15 DP 525392	ob192	357°02'00"	C		23.82 C		Class B
UNMK 15 DP 525392	UNMK 16 DP 525392	ob186	98°45'00"	C		7.40 C		Class B
UNMK 16 DP 525392	UNMK 17 DP 525392	ob187	179°55'00"	C		7.03 C		Class B
UNMK 17 DP 525392	UNMK 10 DP 525392	ob193	150°36'00"	C		33.18 C		Class B
PEG AC DP 467908	PEG DP 2265	ob147	248°23'00"	A DP 2265	-0°04'00"	247.63 A DP 467908		
PEG DP 2265	UNMK DP 467908	ob214	248°23'00"	A DP 2265	-0°04'00"	2.99 A DP 467908		
UNMK DP 467908	UNMK DP 467908	ob215	12°41'30"	A DP 467908	0°00'00"	257.04 A DP 467908		
PEG V DP 2265	UNMK 160 DP 525392	ob150	206°04'00"	C		105.03 C		
PEG V DP 2265	UNMK 110 DP 525392	ob151	236°37'00"	C		57.86 C		
UNMK 160 DP 525392	UNMK 110 DP 525392	ob216	358°01'20"	C		62.55 C		
UNMK DP 467908	UNMK 161 DP 525392	ob174	85°03'00"	C		11.76 C		
UNMK 161 DP 525392	UNMK DP 467908	ob217	85°03'00"	C		3.26 C		
IT V DP 467908	UNMK 110 DP 525392	ob35	241°10'40"	C		140.95 C		
IT V DP 467908	UNMK 161 DP 525392	ob36	298°56'40"	C		109.94 C		
IT V DP 467908	UNMK 116 DP 525392	ob37	302°40'20"	C		95.18 C		
IT V DP 467908	UNMK 120 DP 525392	ob38	18°16'40"	C		185.28 C		
PEG V DP 2265	UNMK 128 DP 525392	ob152	352°09'20"	C		176.83 C		
PEG V DP 2265	UNMK 129 DP 525392	ob153	357°41'40"	C		185.90 C		
UNMK 111 DP 525392	UNMK 2 DP 525392	ob221	290°59'00"	C		4.86 C		Class BD
UNMK 161 DP 525392	UNMK 116 DP 525392	ob218	96°28'00"	C		16.19 C		
UNMK 120 DP 525392	UNMK 160 DP 525392	ob219	0°52'20"	C		95.63 C		
UNMK 128 DP 525392	UNMK 129 DP 525392	ob220	57°35'00"	C		19.73 C		
PEG BC DP 525392	UNMK 111 DP 525392	ob129	290°59'00"	C		20.72 C		Class BD

Mark and Vector

Survey Number DP 525392

Meridional Circuit Taranaki 2000

From	To	Code	Bearing	Adpt Surv	Bearing Correction	Distance	Adpt Surv	Class
UNMK DP 467908	UNMK 110 DP 525392	ob173	358°16'00" C			20.77 C		

Mark Name	Mark Condition	Description
IT I DP 467908		Down 0.3m in paddock
IT II DP 467908		Down 0.3m in paddock
IT V DP 467908		Down 0.20m in paddock
NAIL IV DP 467908		Flush in seal

*** End of Report ***

Schedule / Memorandum

Land Registration District

TARANAKI

Plan Number

DP 525392

Territorial Authority

New Plymouth District

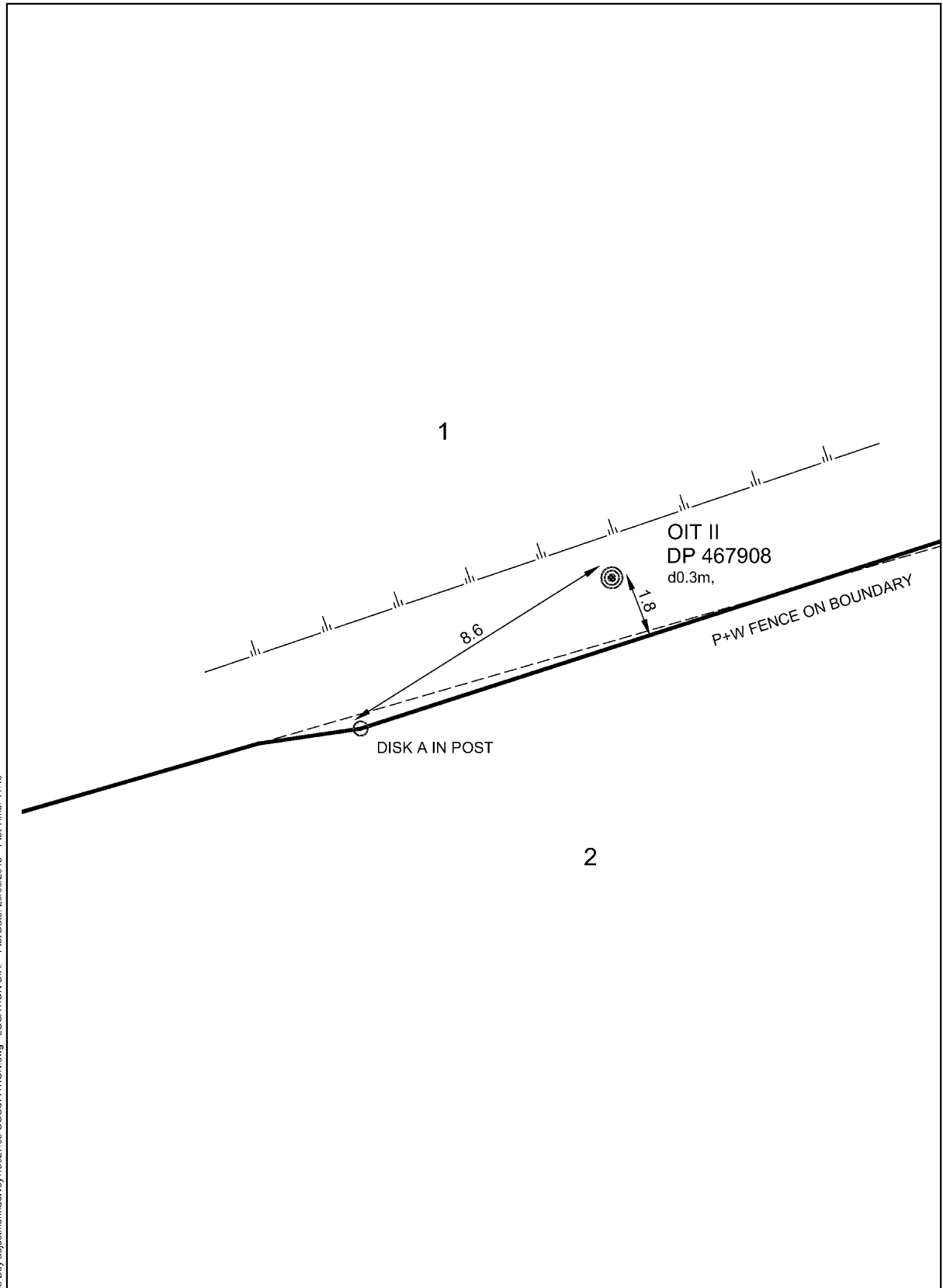
SCHEDULE OF EASEMENTS			
Purpose	Shown	Servient Tenement (Burdened Land)	Dominant Tenement (Benefited Land)
Right to drain water	A	Lot 3	Lot 1
Right to convey electricity	B, D		
Right to drain sewage	B		
Right to drain water	C	Lot 1	Lot 3

SCHEDULE OF EXISTING EASEMENTS			
Purpose	Shown	Servient Tenement (Burdened Land)	Creating Document
Right of Way	E	Lot 1	EI 9586607.6

SCHEDULE OF EXISTING EASEMENTS IN GROSS			
Purpose	Shown	Servient Tenement (Burdened Land)	Creating Document
Construct and make a weir	AMF rights to Lot 1 formerly Part Section 52	Lot 1 hereon	T 96720
	AMF rights to Lot 2 formerly Part Section 52	Lot 2 hereon	

- Esplanade Strips F, G, H, I are existing and were created by EI 9586607.5

Occupation Diagram



File Name: J:\13027\13027_05 Bay adjustment\Survey\13027_05 OCCUPATION.dwg - LOCATION D/A. Plot Date: 26/06/2018 Plot Time: 11:10



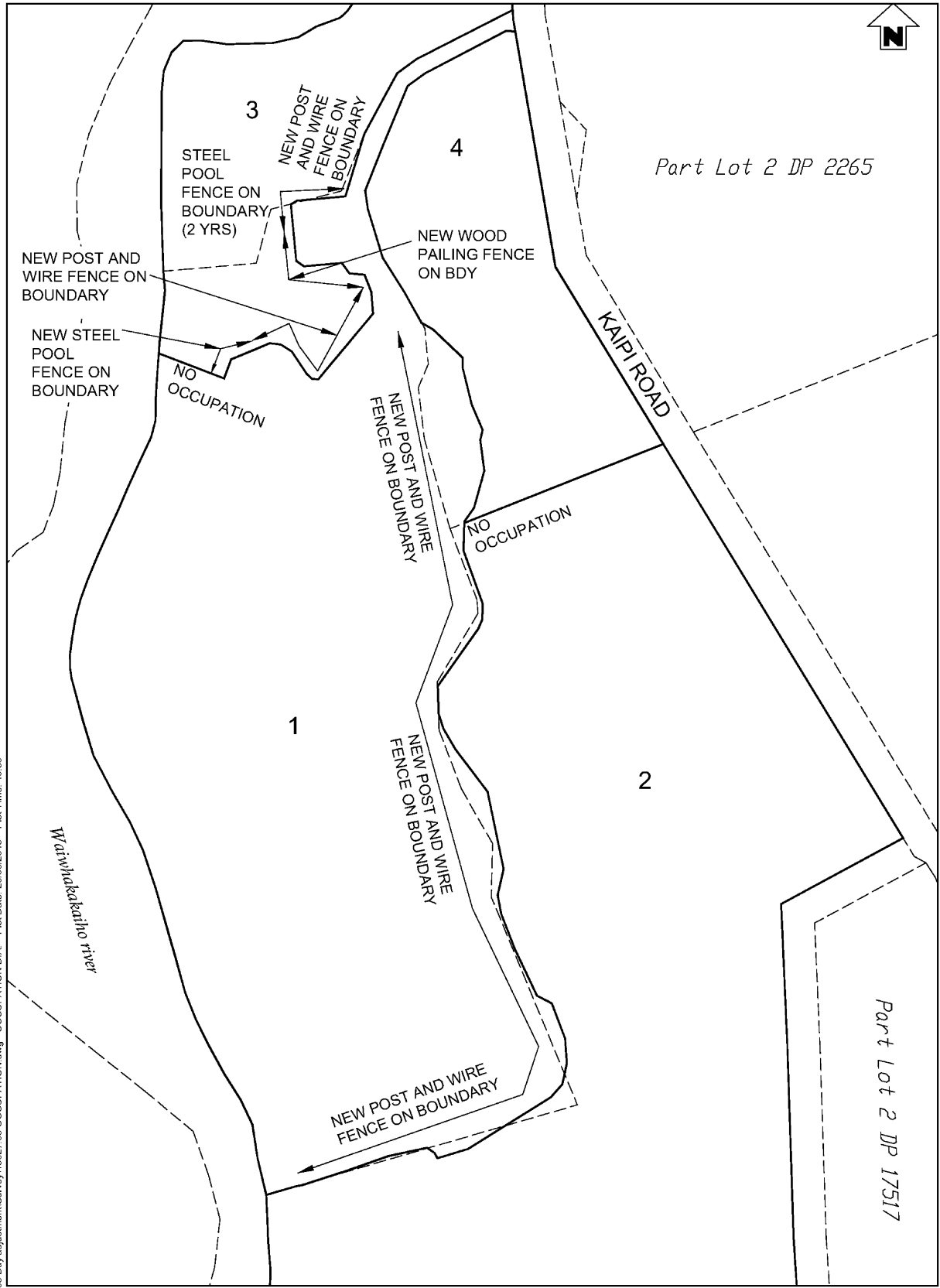
MARK LOCATIONS

Date: JUNE 2018

Drawn: KP

Dwg file: 13027.05

Occupation Diagram



File Name: J:\130271\3027_05_Bdy adjustment\Survey\13027_05_OCCUPATION.dwg - OCCUPATION D.I.A. - Plot Date: 26/06/2018 - Plot Time: 10:56

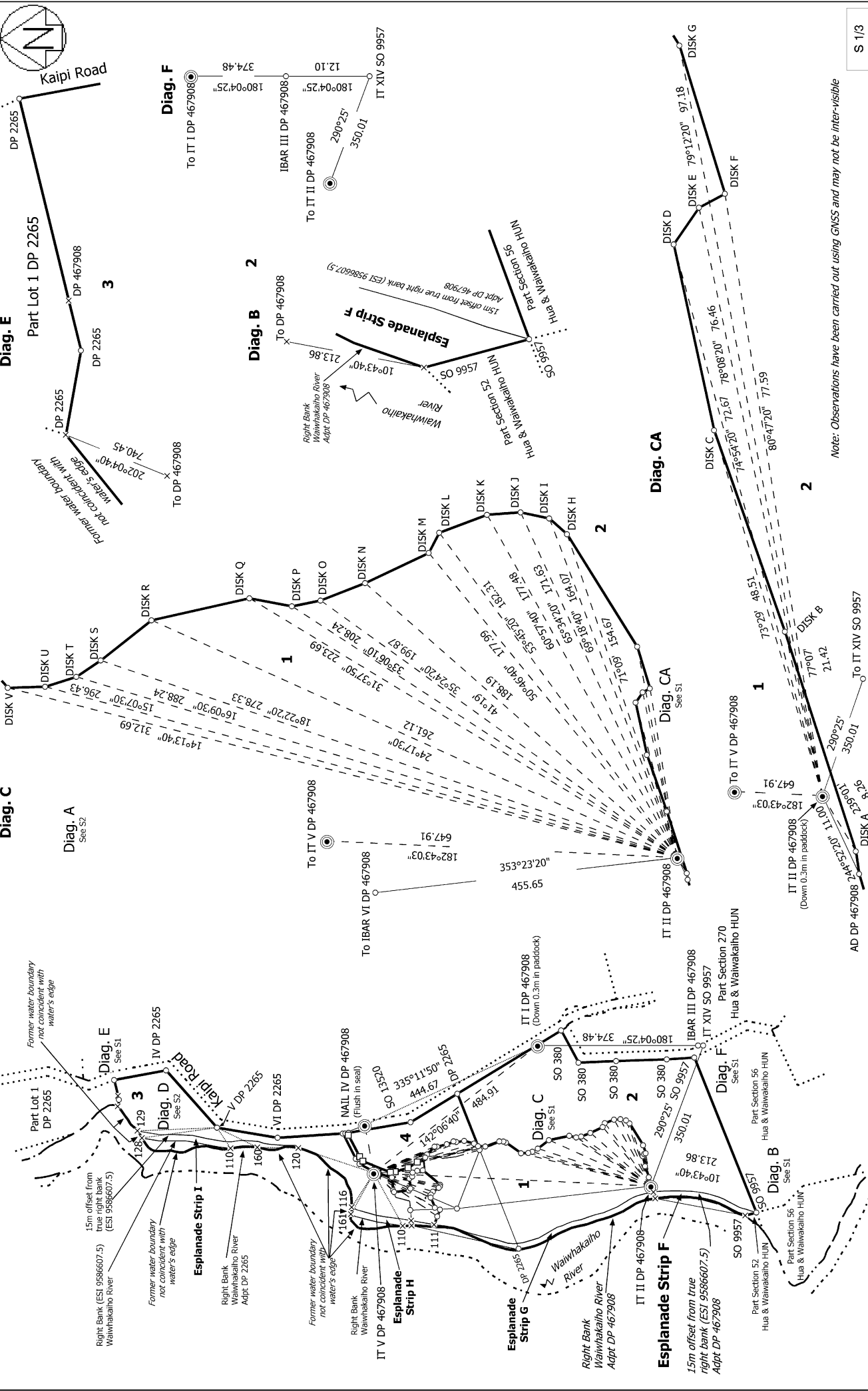
BTWCOMPANY
CONVEYING | PROFESSIONAL SURVEYING & ENGINEERING

OCCUPATION DIAGRAM

Date: JUNE 2018

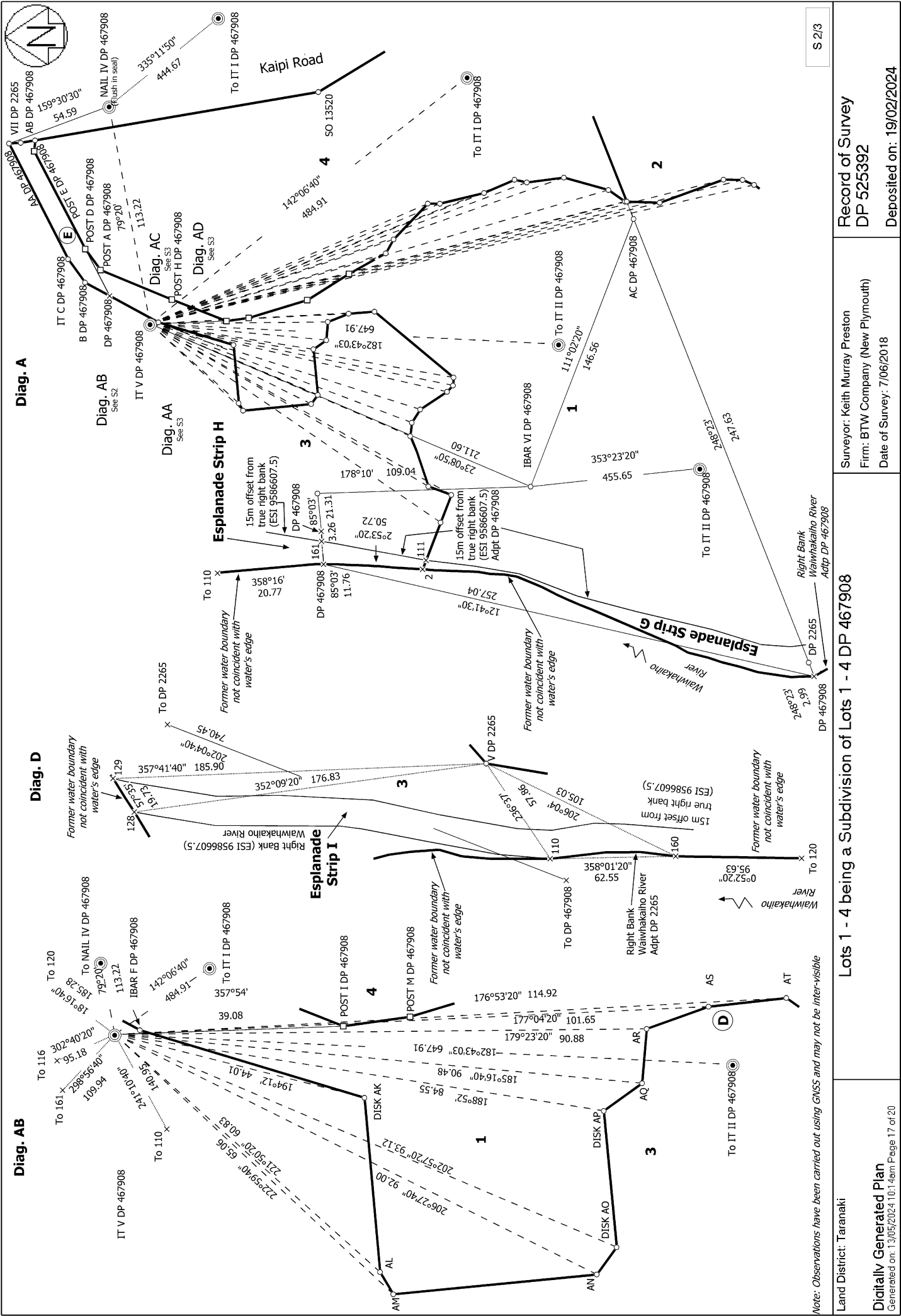
Drawn: KP

Dwg file: 13027.05



Notes: Observations have been carried out using GNSS and may not be inter-visible

<p>Land District: Taranaki</p> <p>Digitally Generated Plan</p> <p>Generated on: 13/05/2024 10:14am Page 16 of 20</p>	<p>Lots 1 - 4 being a Subdivision of Lots 1 - 4 DP 467908</p> <p>Surveyor: Keith Murray Preston Firm: BTW Company (New Plymouth) Date of Survey: 7/06/2018</p>	<p>Record of Survey DP 525392</p> <p>Deposited on: 19/02/2024</p>
---	---	---



S 2/3

Record of Survey
 DP 525392
 Deposited on: 19/02/2024

Surveyor: Keith Murray Preston
 Firm: BTW Company (New Plymouth)
 Date of Survey: 7/06/2018

Lots 1 - 4 being a Subdivision of Lots 1 - 4 DP 467908

Land District: Taranaki
 Digitally Generated Plan
 Generated on: 13/05/2024 10:14am Page 17 of 20

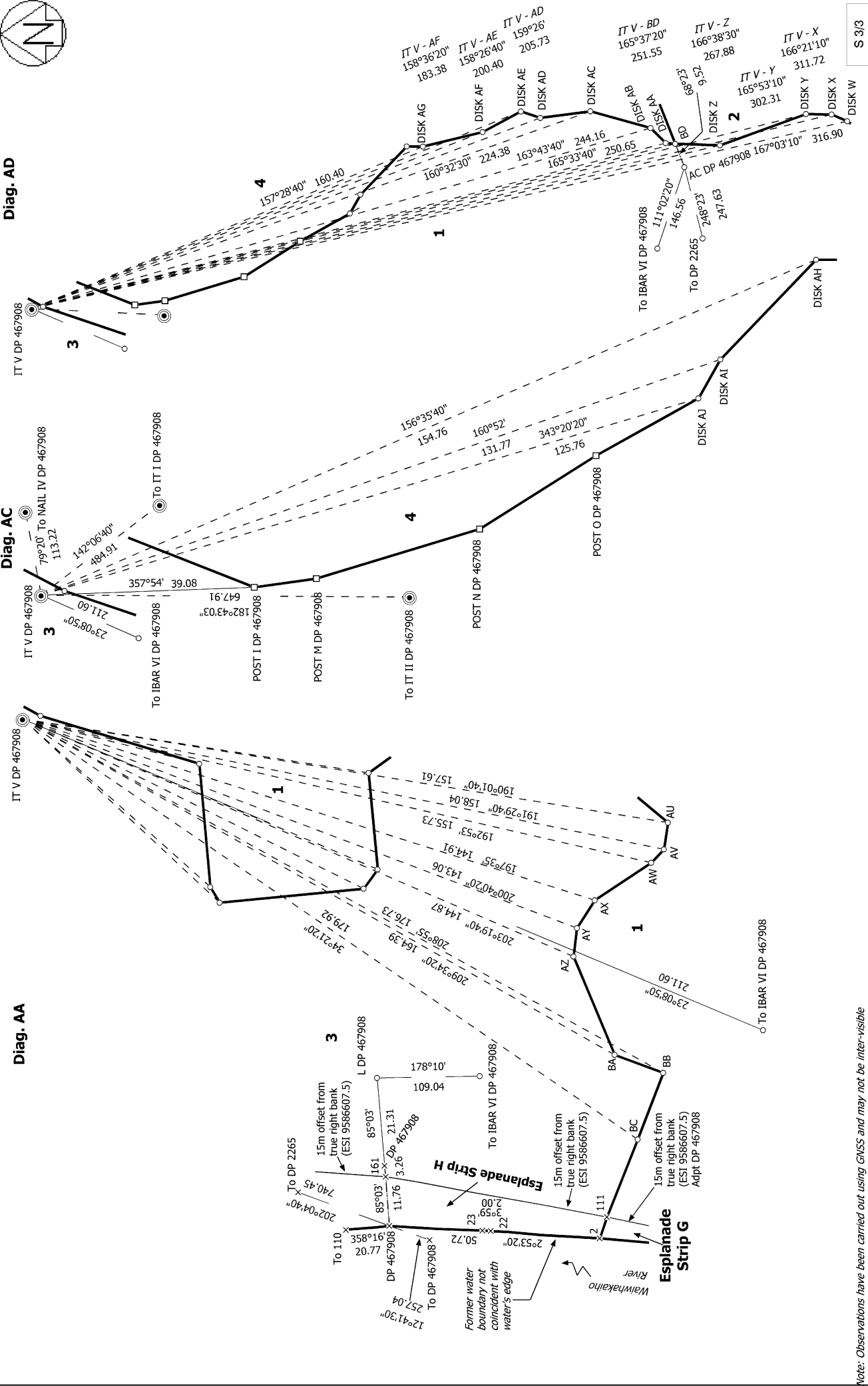
Note: Observations have been carried out using GNSS and may not be inter-visible



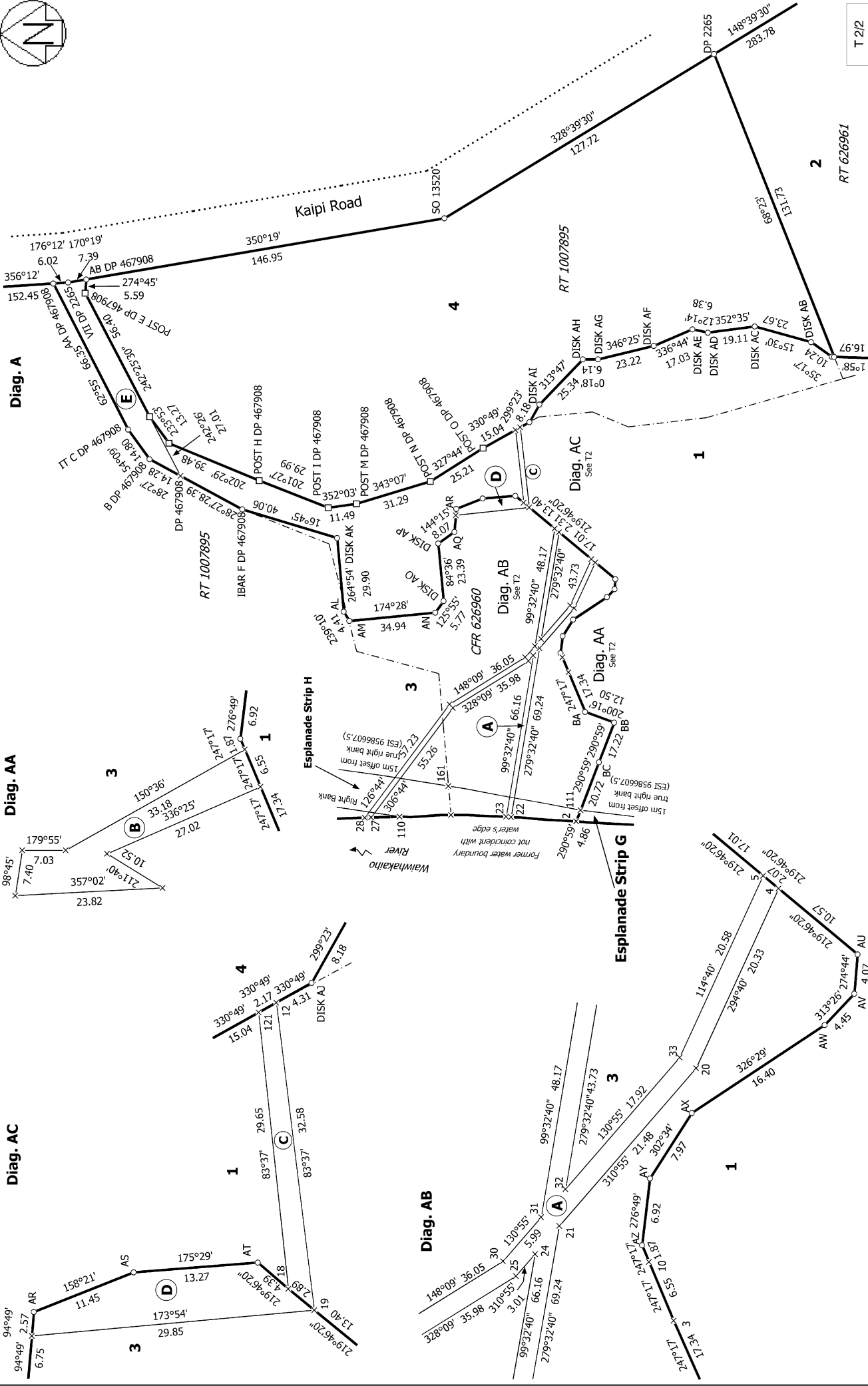
Diag. AD

Diag. AC

Diag. AA



<p>Record of Survey DP 525392</p>	<p>Surveyor: Keith Murray Preston Firm: BTW Company (New Plymouth) Date of Survey: 7/06/2018</p>	<p>Lots 1 - 4 being a Subdivision of Lots 1 - 4 DP 467908</p>	<p>Land District: Taranaki</p> <p>Digitally Generated Plan</p> <p>Generated on: 13/05/2024 10:14am Page 18 of 20</p>
<p>Deposited on: 19/02/2024</p>		<p>Note: Observations have been carried out using GNSS and may not be inter-visible</p>	



T 2/2

Record of Survey
DP 525392
Deposited on: 19/02/2024

Surveyor: Keith Murray Preston
Firm: BTW Company (New Plymouth)
Date of Survey: 7/06/2018

Lots 1 - 4 being a Subdivision of Lots 1 - 4 DP 467908

Land District: Taranaki
Digitally Generated Plan
Generated on: 13/05/2024 10:14am Page 20 of 20