



Record of Survey - DP 383792

Survey Number DP 383792
Surveyor Reference Q3260 UP 383792
Surveyor Simon John Reid
Survey Firm CKL
Surveyor Declaration I Simon John Reid, being a licensed cadastral surveyor, certify that--
(a) this dataset provided by me and its related survey are accurate, correct and in accordance with the Cadastral Survey Act 2002 and Cadastral Survey Rules 2021; and
(b) the survey was undertaken by me or under my personal direction.
Declared on 24 Mar 2023 09:19 AM

Survey Details

Dataset Description Unit Plan in Substitution of Units on Section 184 SO 470828
Purpose Units Plan in Substitution with Survey Sheet
Status Deposited **Type** Survey
Land District North Auckland **Survey Class** Class A
Meridional Circuit Mount Eden 2000 **Vertical Datum** Auckland 1946

Survey Dates

Surveyed Date 14/03/2023 **Certified Date** 24/03/2023
Submitted Date 24/03/2023 09:19:56 **Survey Approval Date** 27/04/2023
Deposit Date 16/06/2023

Referenced Surveys

Survey Number	Land District	Bearing Correction
DP 189232	North Auckland	0°00'00"
DP 466044	North Auckland	0°00'00"
SO 48190	North Auckland	0°00'00"

Territorial Authorities

Auckland Council

Comprised In

RT 375672

Mark and Vector

Survey Number DP 383792

Meridional Circuit Mount Eden 2000

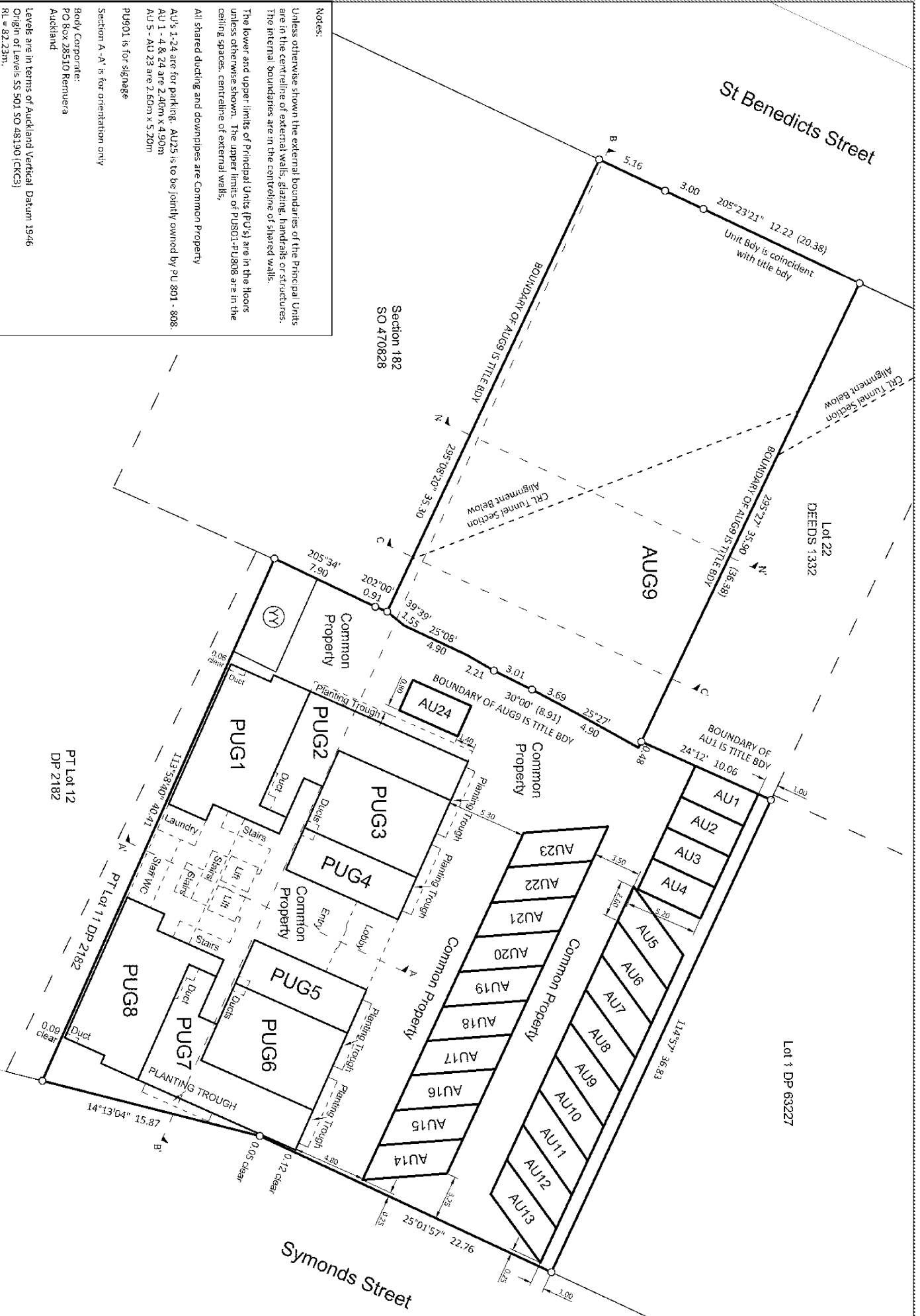
From	To	Code	Bearing	Adpt Surv	Bearing Correction	Distance	Adpt Surv	Class
AK 159 SO 53873	497 SO 48190	ob0	142°46'00" M			37.845 M		
497 SO 48190	AN 6 DP 507079	ob1	213°15'20" M			83.55 M		
AN 6 DP 507079	501 SO 48190	ob3	197°09'10" M			79.62 M		
501 SO 48190	387 SO 50692	ob4	192°59'00" A	DP 189232	0°00'00"	144.43 A	DP 189232	
497 SO 48190	501 SO 48190	ob2	205°23'35" A	DP 466044	0°00'00"	161.58 A	DP 466044	
501 SO 48190	AP 1 DP 466044	ob5	192°53'30" M			3.07 M		
AP 1 DP 466044	IS XX DP 329642	ob6	192°53'30" A	DP 466044	0°00'00"	141.37 A	DP 466044	

*** End of Report ***

St Benedicts Street

Lot 22
DEEDS 1332

Lot 1 DP 63227



Notes:
 Unless otherwise shown the external boundaries of the Principal Units are in the centreline of external walls, glazing, handrails or structures. The internal boundaries are in the centreline of shared walls.
 The lower and upper limits of Principal Units (PU's) are in the floors unless otherwise shown. The upper limits of PUG01-PUG08 are in the ceiling spaces; centreline of external walls.
 All shared ducting and downpipes are Common Property
 AU's 1-24 are for parking. AU25 is to be jointly owned by PU 801 - 808.
 AU 1 - 4 & 24 are 2.40m x 4.90m
 AU 5 - AU 23 are 2.50m x 5.20m
 PUG01 is for signage
 Section A-A' is for orientation only
 Body Corporate:
 PO Box 28510 Remuera
 Auckland
 Levels are in terms of Auckland Vertical Datum 1946
 Origin of Levels SS 501 SO 48190 (CKCS)
 RL = 92.23m.

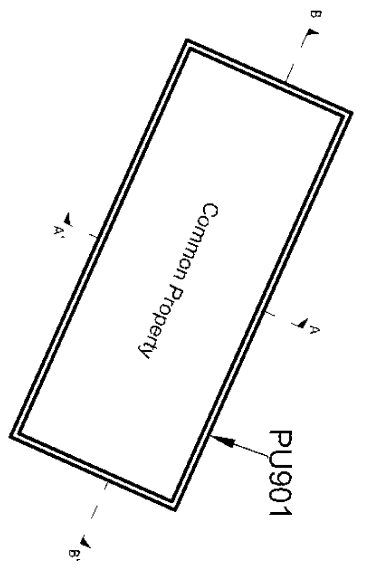
CKL
 Auckland Office
 54, 55 Princes Street, Auckland
 P.O. Box 114, Auckland
 Head Office
 14, 15, 16, 17, 18, 19, 20, 21, 22, 23, 24, 25, 26, 27, 28, 29, 30, 31, 32, 33, 34, 35, 36, 37, 38, 39, 40, 41, 42, 43, 44, 45, 46, 47, 48, 49, 50, 51, 52, 53, 54, 55, 56, 57, 58, 59, 60, 61, 62, 63, 64, 65, 66, 67, 68, 69, 70, 71, 72, 73, 74, 75, 76, 77, 78, 79, 80, 81, 82, 83, 84, 85, 86, 87, 88, 89, 90, 91, 92, 93, 94, 95, 96, 97, 98, 99, 100, 101, 102, 103, 104, 105, 106, 107, 108, 109, 110, 111, 112, 113, 114, 115, 116, 117, 118, 119, 120, 121, 122, 123, 124, 125, 126, 127, 128, 129, 130, 131, 132, 133, 134, 135, 136, 137, 138, 139, 140, 141, 142, 143, 144, 145, 146, 147, 148, 149, 150, 151, 152, 153, 154, 155, 156, 157, 158, 159, 160, 161, 162, 163, 164, 165, 166, 167, 168, 169, 170, 171, 172, 173, 174, 175, 176, 177, 178, 179, 180, 181, 182, 183, 184, 185, 186, 187, 188, 189, 190, 191, 192, 193, 194, 195, 196, 197, 198, 199, 200, 201, 202, 203, 204, 205, 206, 207, 208, 209, 210, 211, 212, 213, 214, 215, 216, 217, 218, 219, 220, 221, 222, 223, 224, 225, 226, 227, 228, 229, 230, 231, 232, 233, 234, 235, 236, 237, 238, 239, 240, 241, 242, 243, 244, 245, 246, 247, 248, 249, 250, 251, 252, 253, 254, 255, 256, 257, 258, 259, 260, 261, 262, 263, 264, 265, 266, 267, 268, 269, 270, 271, 272, 273, 274, 275, 276, 277, 278, 279, 280, 281, 282, 283, 284, 285, 286, 287, 288, 289, 290, 291, 292, 293, 294, 295, 296, 297, 298, 299, 300, 301, 302, 303, 304, 305, 306, 307, 308, 309, 310, 311, 312, 313, 314, 315, 316, 317, 318, 319, 320, 321, 322, 323, 324, 325, 326, 327, 328, 329, 330, 331, 332, 333, 334, 335, 336, 337, 338, 339, 340, 341, 342, 343, 344, 345, 346, 347, 348, 349, 350, 351, 352, 353, 354, 355, 356, 357, 358, 359, 360, 361, 362, 363, 364, 365, 366, 367, 368, 369, 370, 371, 372, 373, 374, 375, 376, 377, 378, 379, 380, 381, 382, 383, 384, 385, 386, 387, 388, 389, 390, 391, 392, 393, 394, 395, 396, 397, 398, 399, 400, 401, 402, 403, 404, 405, 406, 407, 408, 409, 410, 411, 412, 413, 414, 415, 416, 417, 418, 419, 420, 421, 422, 423, 424, 425, 426, 427, 428, 429, 430, 431, 432, 433, 434, 435, 436, 437, 438, 439, 440, 441, 442, 443, 444, 445, 446, 447, 448, 449, 450, 451, 452, 453, 454, 455, 456, 457, 458, 459, 460, 461, 462, 463, 464, 465, 466, 467, 468, 469, 470, 471, 472, 473, 474, 475, 476, 477, 478, 479, 480, 481, 482, 483, 484, 485, 486, 487, 488, 489, 490, 491, 492, 493, 494, 495, 496, 497, 498, 499, 500, 501, 502, 503, 504, 505, 506, 507, 508, 509, 510, 511, 512, 513, 514, 515, 516, 517, 518, 519, 520, 521, 522, 523, 524, 525, 526, 527, 528, 529, 530, 531, 532, 533, 534, 535, 536, 537, 538, 539, 540, 541, 542, 543, 544, 545, 546, 547, 548, 549, 550, 551, 552, 553, 554, 555, 556, 557, 558, 559, 560, 561, 562, 563, 564, 565, 566, 567, 568, 569, 570, 571, 572, 573, 574, 575, 576, 577, 578, 579, 580, 581, 582, 583, 584, 585, 586, 587, 588, 589, 590, 591, 592, 593, 594, 595, 596, 597, 598, 599, 600, 601, 602, 603, 604, 605, 606, 607, 608, 609, 610, 611, 612, 613, 614, 615, 616, 617, 618, 619, 620, 621, 622, 623, 624, 625, 626, 627, 628, 629, 630, 631, 632, 633, 634, 635, 636, 637, 638, 639, 640, 641, 642, 643, 644, 645, 646, 647, 648, 649, 650, 651, 652, 653, 654, 655, 656, 657, 658, 659, 660, 661, 662, 663, 664, 665, 666, 667, 668, 669, 670, 671, 672, 673, 674, 675, 676, 677, 678, 679, 680, 681, 682, 683, 684, 685, 686, 687, 688, 689, 690, 691, 692, 693, 694, 695, 696, 697, 698, 699, 700, 701, 702, 703, 704, 705, 706, 707, 708, 709, 710, 711, 712, 713, 714, 715, 716, 717, 718, 719, 720, 721, 722, 723, 724, 725, 726, 727, 728, 729, 730, 731, 732, 733, 734, 735, 736, 737, 738, 739, 740, 741, 742, 743, 744, 745, 746, 747, 748, 749, 750, 751, 752, 753, 754, 755, 756, 757, 758, 759, 760, 761, 762, 763, 764, 765, 766, 767, 768, 769, 770, 771, 772, 773, 774, 775, 776, 777, 778, 779, 780, 781, 782, 783, 784, 785, 786, 787, 788, 789, 790, 791, 792, 793, 794, 795, 796, 797, 798, 799, 800, 801, 802, 803, 804, 805, 806, 807, 808, 809, 810, 811, 812, 813, 814, 815, 816, 817, 818, 819, 820, 821, 822, 823, 824, 825, 826, 827, 828, 829, 830, 831, 832, 833, 834, 835, 836, 837, 838, 839, 840, 841, 842, 843, 844, 845, 846, 847, 848, 849, 850, 851, 852, 853, 854, 855, 856, 857, 858, 859, 860, 861, 862, 863, 864, 865, 866, 867, 868, 869, 870, 871, 872, 873, 874, 875, 876, 877, 878, 879, 880, 881, 882, 883, 884, 885, 886, 887, 888, 889, 890, 891, 892, 893, 894, 895, 896, 897, 898, 899, 900, 901, 902, 903, 904, 905, 906, 907, 908, 909, 910, 911, 912, 913, 914, 915, 916, 917, 918, 919, 920, 921, 922, 923, 924, 925, 926, 927, 928, 929, 930, 931, 932, 933, 934, 935, 936, 937, 938, 939, 940, 941, 942, 943, 944, 945, 946, 947, 948, 949, 950, 951, 952, 953, 954, 955, 956, 957, 958, 959, 960, 961, 962, 963, 964, 965, 966, 967, 968, 969, 970, 971, 972, 973, 974, 975, 976, 977, 978, 979, 980, 981, 982, 983, 984, 985, 986, 987, 988, 989, 990, 991, 992, 993, 994, 995, 996, 997, 998, 999, 1000.

Unit Plan in Substitution of
 Units on Section 184 SO 470828

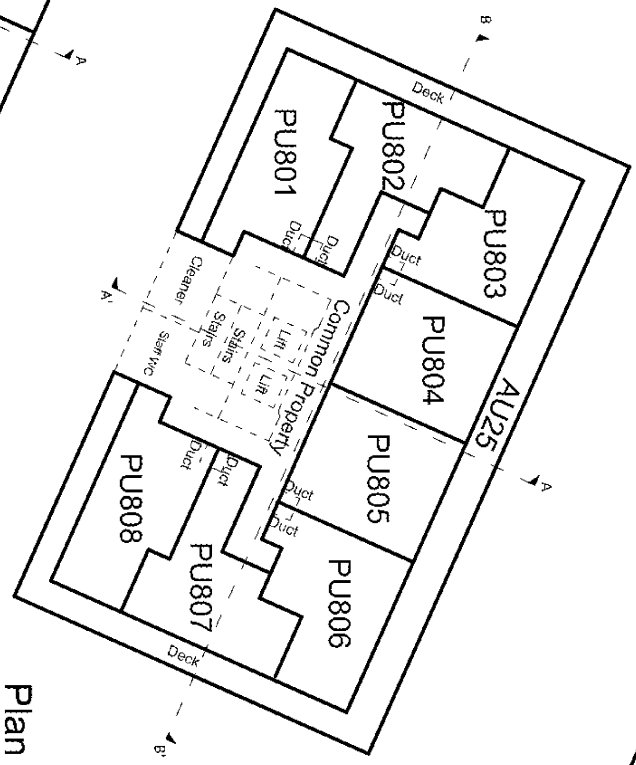
Ground Floor

DP 383792

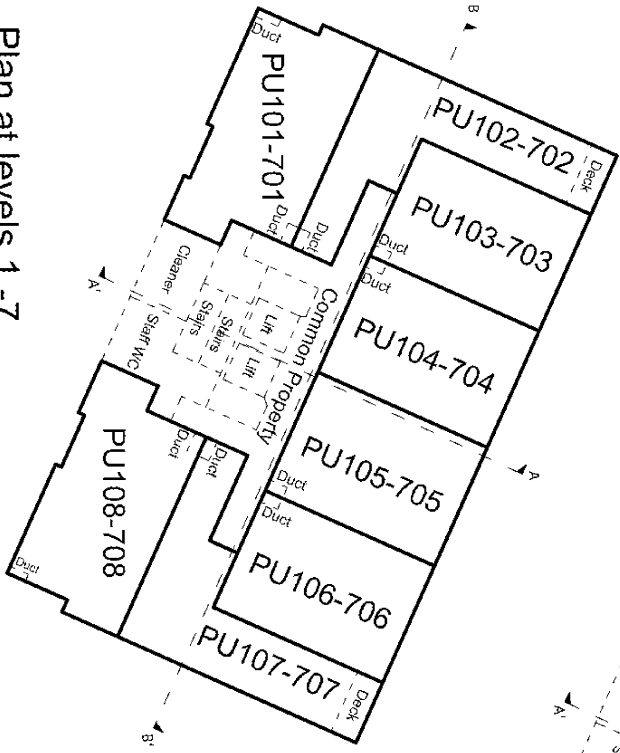
Scale: 1:250
 Job No: Q3260
 DWG No: 1 of 5
 Rev: 0



Plan at Roof Level



Plan at level 8



Plan at levels 1 -7
(Identical)

Notes:

Unless otherwise shown the external boundaries of the Principal Units are in the centreline of external walls, gazing, handrails or structures. The internal boundaries are in the centreline of shared walls.

The lower and upper limits of Principal Units (PUs) are in the floors unless otherwise shown. The upper limits of PU801, PU808 are in the ceiling spaces, centreline of external walls,

All shared ducting and downpipes are Common Property

AU's 1-24 are for parking. AU25 is to be jointly owned by PU 801 - 808.

AU 1 - 4 & 24 are 2.40m x 4.90m

AU 5 - AU 23 are 2.60m x 5.20m

PU901 is for signage

Section A - A' is for orientation only

Body Corporate:
PO Box 28510 Remuera
Auckland

Levels are in terms of Auckland Vertical Datum 1946
Origin of Levels S5 501 50 48190 (CKC3)
RL = 82.23m.

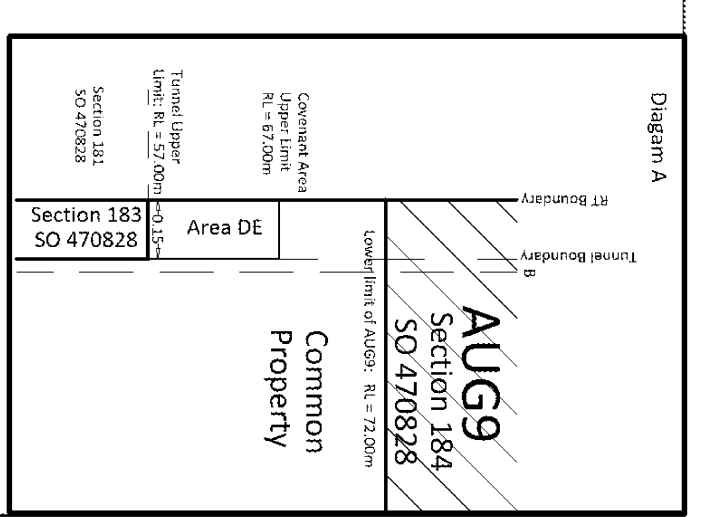
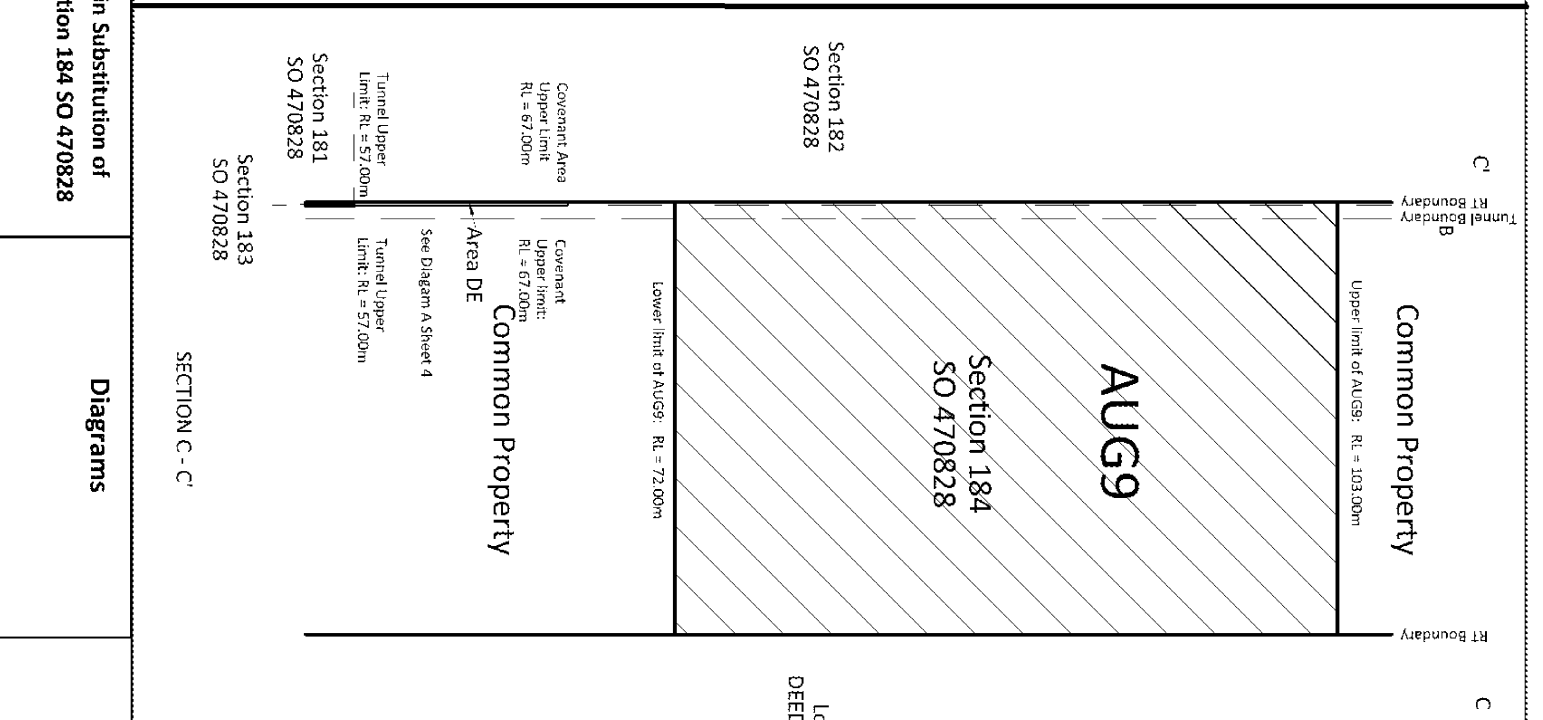
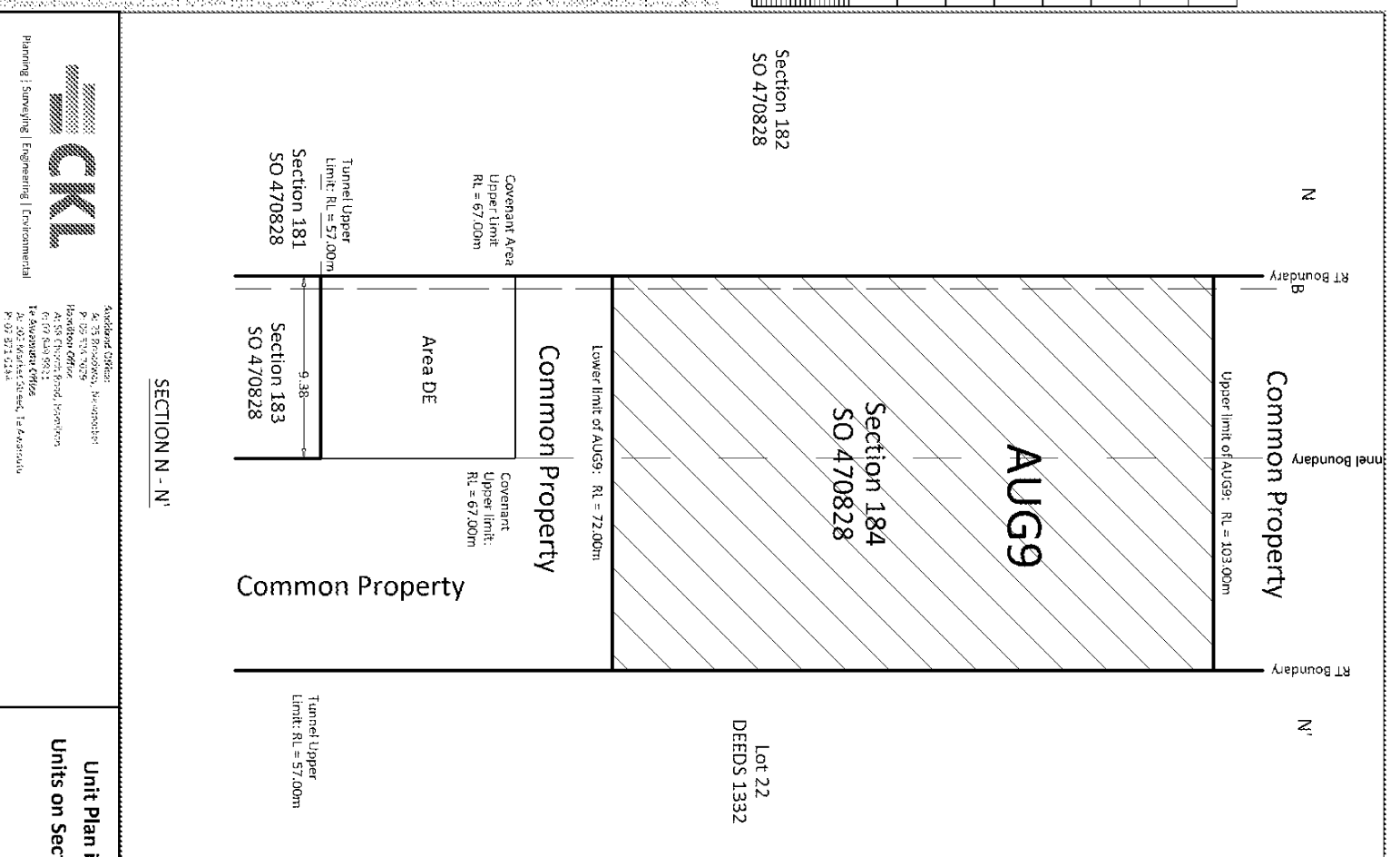
Auckland Office:
 54, 55 Princes Street, Auckland
 P.O. Box 713, 1015
 Auckland Office:
 45, 46, 47, 48, 49 Princes Street, Auckland
 P.O. Box 713, 1015
 Hamilton Office:
 14, 15, 16, 17, 18, 19, 20, 21, 22, 23, 24, 25, 26, 27, 28, 29, 30, 31, 32, 33, 34, 35, 36, 37, 38, 39, 40, 41, 42, 43, 44, 45, 46, 47, 48, 49, 50, 51, 52, 53, 54, 55, 56, 57, 58, 59, 60, 61, 62, 63, 64, 65, 66, 67, 68, 69, 70, 71, 72, 73, 74, 75, 76, 77, 78, 79, 80, 81, 82, 83, 84, 85, 86, 87, 88, 89, 90, 91, 92, 93, 94, 95, 96, 97, 98, 99, 100, 101, 102, 103, 104, 105, 106, 107, 108, 109, 110, 111, 112, 113, 114, 115, 116, 117, 118, 119, 120, 121, 122, 123, 124, 125, 126, 127, 128, 129, 130, 131, 132, 133, 134, 135, 136, 137, 138, 139, 140, 141, 142, 143, 144, 145, 146, 147, 148, 149, 150, 151, 152, 153, 154, 155, 156, 157, 158, 159, 160, 161, 162, 163, 164, 165, 166, 167, 168, 169, 170, 171, 172, 173, 174, 175, 176, 177, 178, 179, 180, 181, 182, 183, 184, 185, 186, 187, 188, 189, 190, 191, 192, 193, 194, 195, 196, 197, 198, 199, 200, 201, 202, 203, 204, 205, 206, 207, 208, 209, 210, 211, 212, 213, 214, 215, 216, 217, 218, 219, 220, 221, 222, 223, 224, 225, 226, 227, 228, 229, 230, 231, 232, 233, 234, 235, 236, 237, 238, 239, 240, 241, 242, 243, 244, 245, 246, 247, 248, 249, 250, 251, 252, 253, 254, 255, 256, 257, 258, 259, 260, 261, 262, 263, 264, 265, 266, 267, 268, 269, 270, 271, 272, 273, 274, 275, 276, 277, 278, 279, 280, 281, 282, 283, 284, 285, 286, 287, 288, 289, 290, 291, 292, 293, 294, 295, 296, 297, 298, 299, 300, 301, 302, 303, 304, 305, 306, 307, 308, 309, 310, 311, 312, 313, 314, 315, 316, 317, 318, 319, 320, 321, 322, 323, 324, 325, 326, 327, 328, 329, 330, 331, 332, 333, 334, 335, 336, 337, 338, 339, 340, 341, 342, 343, 344, 345, 346, 347, 348, 349, 350, 351, 352, 353, 354, 355, 356, 357, 358, 359, 360, 361, 362, 363, 364, 365, 366, 367, 368, 369, 370, 371, 372, 373, 374, 375, 376, 377, 378, 379, 380, 381, 382, 383, 384, 385, 386, 387, 388, 389, 390, 391, 392, 393, 394, 395, 396, 397, 398, 399, 400, 401, 402, 403, 404, 405, 406, 407, 408, 409, 410, 411, 412, 413, 414, 415, 416, 417, 418, 419, 420, 421, 422, 423, 424, 425, 426, 427, 428, 429, 430, 431, 432, 433, 434, 435, 436, 437, 438, 439, 440, 441, 442, 443, 444, 445, 446, 447, 448, 449, 450, 451, 452, 453, 454, 455, 456, 457, 458, 459, 460, 461, 462, 463, 464, 465, 466, 467, 468, 469, 470, 471, 472, 473, 474, 475, 476, 477, 478, 479, 480, 481, 482, 483, 484, 485, 486, 487, 488, 489, 490, 491, 492, 493, 494, 495, 496, 497, 498, 499, 500, 501, 502, 503, 504, 505, 506, 507, 508, 509, 510, 511, 512, 513, 514, 515, 516, 517, 518, 519, 520, 521, 522, 523, 524, 525, 526, 527, 528, 529, 530, 531, 532, 533, 534, 535, 536, 537, 538, 539, 540, 541, 542, 543, 544, 545, 546, 547, 548, 549, 550, 551, 552, 553, 554, 555, 556, 557, 558, 559, 560, 561, 562, 563, 564, 565, 566, 567, 568, 569, 570, 571, 572, 573, 574, 575, 576, 577, 578, 579, 580, 581, 582, 583, 584, 585, 586, 587, 588, 589, 590, 591, 592, 593, 594, 595, 596, 597, 598, 599, 600, 601, 602, 603, 604, 605, 606, 607, 608, 609, 610, 611, 612, 613, 614, 615, 616, 617, 618, 619, 620, 621, 622, 623, 624, 625, 626, 627, 628, 629, 630, 631, 632, 633, 634, 635, 636, 637, 638, 639, 640, 641, 642, 643, 644, 645, 646, 647, 648, 649, 650, 651, 652, 653, 654, 655, 656, 657, 658, 659, 660, 661, 662, 663, 664, 665, 666, 667, 668, 669, 670, 671, 672, 673, 674, 675, 676, 677, 678, 679, 680, 681, 682, 683, 684, 685, 686, 687, 688, 689, 690, 691, 692, 693, 694, 695, 696, 697, 698, 699, 700, 701, 702, 703, 704, 705, 706, 707, 708, 709, 710, 711, 712, 713, 714, 715, 716, 717, 718, 719, 720, 721, 722, 723, 724, 725, 726, 727, 728, 729, 730, 731, 732, 733, 734, 735, 736, 737, 738, 739, 740, 741, 742, 743, 744, 745, 746, 747, 748, 749, 750, 751, 752, 753, 754, 755, 756, 757, 758, 759, 760, 761, 762, 763, 764, 765, 766, 767, 768, 769, 770, 771, 772, 773, 774, 775, 776, 777, 778, 779, 780, 781, 782, 783, 784, 785, 786, 787, 788, 789, 790, 791, 792, 793, 794, 795, 796, 797, 798, 799, 800, 801, 802, 803, 804, 805, 806, 807, 808, 809, 810, 811, 812, 813, 814, 815, 816, 817, 818, 819, 820, 821, 822, 823, 824, 825, 826, 827, 828, 829, 830, 831, 832, 833, 834, 835, 836, 837, 838, 839, 840, 841, 842, 843, 844, 845, 846, 847, 848, 849, 850, 851, 852, 853, 854, 855, 856, 857, 858, 859, 860, 861, 862, 863, 864, 865, 866, 867, 868, 869, 870, 871, 872, 873, 874, 875, 876, 877, 878, 879, 880, 881, 882, 883, 884, 885, 886, 887, 888, 889, 890, 891, 892, 893, 894, 895, 896, 897, 898, 899, 900, 901, 902, 903, 904, 905, 906, 907, 908, 909, 910, 911, 912, 913, 914, 915, 916, 917, 918, 919, 920, 921, 922, 923, 924, 925, 926, 927, 928, 929, 930, 931, 932, 933, 934, 935, 936, 937, 938, 939, 940, 941, 942, 943, 944, 945, 946, 947, 948, 949, 950, 951, 952, 953, 954, 955, 956, 957, 958, 959, 960, 961, 962, 963, 964, 965, 966, 967, 968, 969, 970, 971, 972, 973, 974, 975, 976, 977, 978, 979, 980, 981, 982, 983, 984, 985, 986, 987, 988, 989, 990, 991, 992, 993, 994, 995, 996, 997, 998, 999, 1000.

Unit Plan in Substitution of
Units on Section 184 SO 470828

Diagrams

DP 383792

Scale: 1:250
Job No: Q3260 2 of 5 0
DWG No: Rev: 0



Notes:

Unless otherwise shown the external boundaries of the Principal Units are in the centreline of external walls, glazing, handrails or structures. The internal boundaries are in the centreline of shared walls.

The lower and upper limits of Principal Units (PU's) are in the floors unless otherwise shown. The upper limits of PU801-PU808 are in the ceiling spaces, centreline of external walls.

All shared ducting and downpipes are Common Property

AU's 1-24 are for parking. AU25 is to be jointly owned by PU 801 - 808

AU 1 - 4 & 24 are 3.40m x 4.90m

AU 5 - AU 23 are 2.60m x 5.20m

PU901 is for signage

Section A - A' is for orientation only

Body Corporate:
PO Box 28510 Remuera
Auckland

Levels are in terms of Auckland Vertical Datum 1946
Origin of Levels SS 501 SO 48190 (CKC3)
RL = 82.29m.

Scale: 1:250

Job No: Q3260
DWG No: 4 of 5
Rev: 0

DP 383792

CTA/ALLOATED	APPELLATION	UNIT ENTITLEMENTS	HEIGHT LIMITS		CTA/ALLOATED	APPELLATION	UNIT ENTITLEMENTS	HEIGHT LIMITS		CTA/ALLOATED	APPELLATION	UNIT ENTITLEMENTS	HEIGHT LIMITS		
			LOWER	UPPER				LOWER	UPPER				LOWER	UPPER	
334648	PUG1	135	85.23	89.30	334698	PUS01	142	101.68	104.78	AU1	15	84.00	86.50		
334649	PUG2	107	85.23	89.30	334689	PUS02	131	101.68	104.78	AU2	15	84.00	86.50		
334650	PUG3	112	85.23	89.30	334690	PUS03	123	101.68	104.78	AU3	15	84.00	86.50		
334651	PUG4	61	85.23	89.30	334691	PUS04	123	101.68	104.78	AU4	15	84.00	86.50		
334652	PUG5	108	85.23	89.30	334692	PUS05	123	101.68	104.78	AU5	15	83.80	86.70		
334653	PUG6	112	85.23	89.30	334693	PUS06	112	101.68	104.78	AU6	15	83.80	86.70		
334654	PUG7	108	85.23	89.30	334694	PUS07	131	101.68	104.78	AU7	15	83.80	86.70		
334655	PUG8	195	85.23	89.30	334695	PUS08	143	101.68	104.78	AU8	15	83.80	86.70		
334656	PUG9	130	89.30	92.39	334696	PUS09	145	104.78	107.90	AU9	15	83.60	86.50		
334657	PUG10	114	89.30	92.39	334697	PUS10	135	104.78	107.90	AU10	15	83.60	86.50		
334658	PUG11	112	89.30	92.39	334698	PUS11	125	104.78	107.90	AU11	15	83.60	86.50		
334659	PUG12	112	89.30	92.39	334699	PUS12	125	104.78	107.90	AU12	15	83.60	86.50		
334660	PUG13	112	89.30	92.39	334700	PUS13	125	104.78	107.90	AU13	15	83.60	86.50		
334661	PUG14	112	89.30	92.39	334701	PUS14	125	104.78	107.90	AU14	15	84.20	86.90		
334662	PUG15	114	89.30	92.39	334702	PUS15	112	104.78	107.90	AU15	15	84.30	86.90		
334663	PUG16	120	89.30	92.39	334703	PUS16	125	104.78	107.90	AU16	15	84.40	86.90		
334664	PUG17	113	92.39	95.48	334704	PUS17	148	107.90	111.10	AU17	15	84.40	87.15		
334665	PUG18	119	92.39	95.48	334705	PUS18	140	107.90	111.10	AU18	15	84.40	87.15		
334666	PUG19	115	92.39	95.48	334706	PUS19	128	107.90	111.10	AU19	15	84.40	87.20		
334667	PUG20	115	92.39	95.48	334707	PUS20	128	107.90	111.10	AU20	15	84.40	87.20		
334668	PUG21	115	92.39	95.48	334708	PUS21	128	107.90	111.10	AU21	15	84.40	87.20		
334669	PUG22	112	92.39	95.48	334709	PUS22	113	107.90	111.10	AU22	15	84.40	87.20		
334670	PUG23	119	92.39	95.48	334710	PUS23	140	107.90	111.10	AU23	15	84.50	87.20		
334671	PUG24	133	92.39	95.48	334711	PUS24	148	107.90	111.10	AU24	15	84.50	87.20		
334672	PUG25	136	95.48	98.58	334712	PUS25	132	111.10	114.15	AU25	122	111.05	114.15		
334673	PUG26	123	95.48	98.58	334713	PUS26	136	111.10	114.15	AUG9	444	72.90	103.00		
334674	PUG27	118	95.48	98.58	334714	PUS27	154	111.10	114.15						
334675	PUG28	118	95.48	98.58	334715	PUS28	142	111.10	114.15						
334676	PUG29	118	95.48	98.58	334716	PUS29	142	111.10	114.15						
334677	PUG30	118	95.48	98.58	334717	PUS30	155	111.10	114.15						
334678	PUG31	123	95.48	98.58	334718	PUS31	136	111.10	114.15						
334679	PUG32	136	95.48	98.58	334719	PUS32	150	111.10	114.15						
334680	PUG33	139	98.58	101.68	334720	PUS33	12	114.70	118.65						
334681	PUG34	125	98.58	101.68											
334682	PUG35	120	98.58	101.68											
334683	PUG36	120	98.58	101.68											
334684	PUG37	120	98.58	101.68											
334685	PUG38	112	98.58	101.68											
334686	PUG39	127	98.58	101.68											
334687	PUG40	139	98.58	101.68											
TOTAL UNIT ENTITLEMENTS 10000															



 Auckland Office: 54, 55 Princes Street, Auckland
 P.O. Box 1111, Auckland
 Hamilton Office: 100, Victoria Street, Hamilton
 P.O. Box 100, Hamilton
 Tauranga Office: 100, Victoria Street, Tauranga
 P.O. Box 100, Tauranga
 Wellington Office: 100, Victoria Street, Wellington
 P.O. Box 100, Wellington
 Planning | Surveying | Engineering | Environmental
 P. 07 571 4134

Unit Plan in Substitution of
Units on Section 184 SO 470828

Diagrams

DP 383792

Job No: **Q3260** DWG No: **5 of 5**
 Rev: **0**
 Scale: **1:250**
 (1:3 Original)

Notes:
 Unless otherwise shown the external boundaries of the Principal Units are in the centreline of external walls, gazing, handrails or structures. The internal boundaries are in the centreline of shared walls.
 The lower and upper limits of Principal Units (PUs) are in the floors unless otherwise shown. The upper limits of PUS01-PUS08 are in the ceiling spaces, centreline of external walls,
 All shared ducting and downpipes are Common Property
 AU's 1-24 are for parking. AU25 is to be jointly owned by PU 801 - 808.
 AU 1 - 4 & 24 are 2.40m x 4.90m
 AU 5 - AU 23 are 2.60m x 5.20m
 PU901 is for signage
 Section A - A' is for orientation only
 Body Corporate:
 PO Box 28510 Remuera
 Auckland
 Levels are in Terms of Auckland Vertical Datum 1946
 Origin of Levels S5 501 50 48190 (CKC3)
 RL = 82.23m.

Schedule / Memorandum

Land Registration District

North Auckland

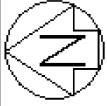
Plan Number

DP 383792

Territorial Authority (the Council)

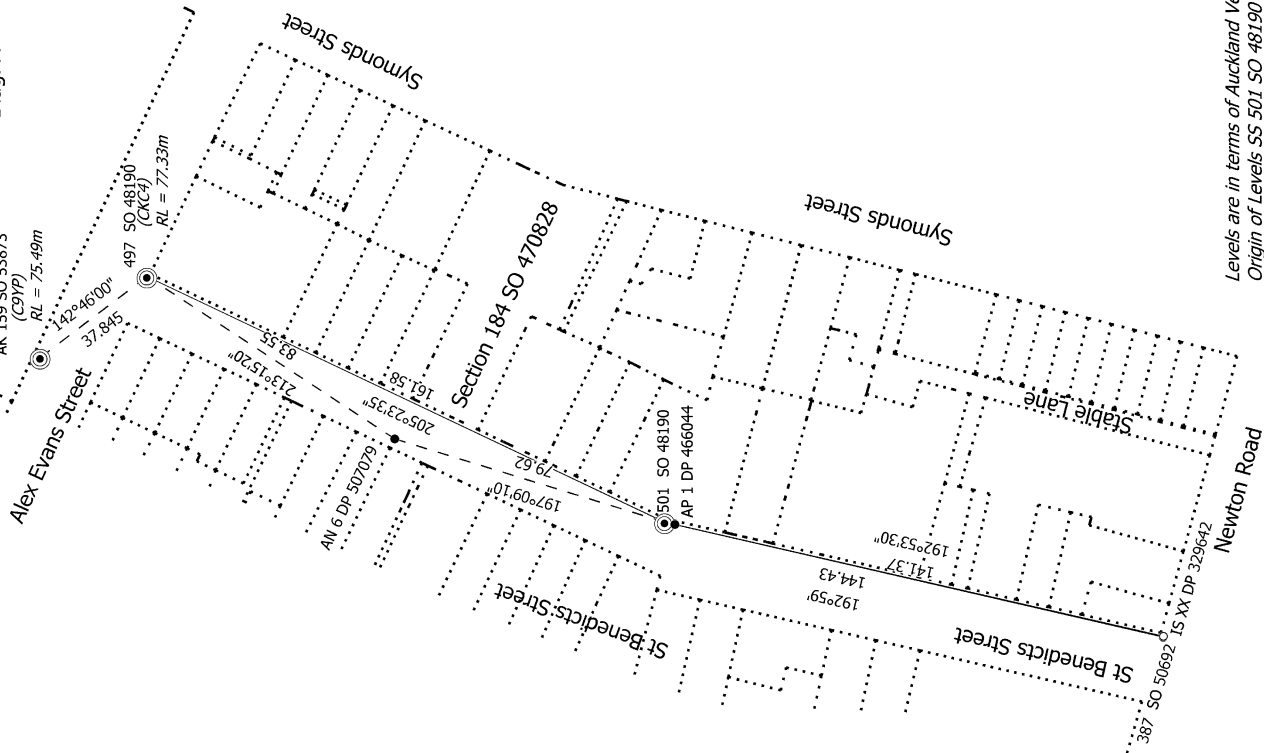
Auckland Council

Schedule of Existing Easements in Gross			
Purpose	Shown	Servient Tenement (Burdened Land)	Created By
Electricity Right	Marked YY DP 470828	Section 184 SO 470828	TE.596272.1

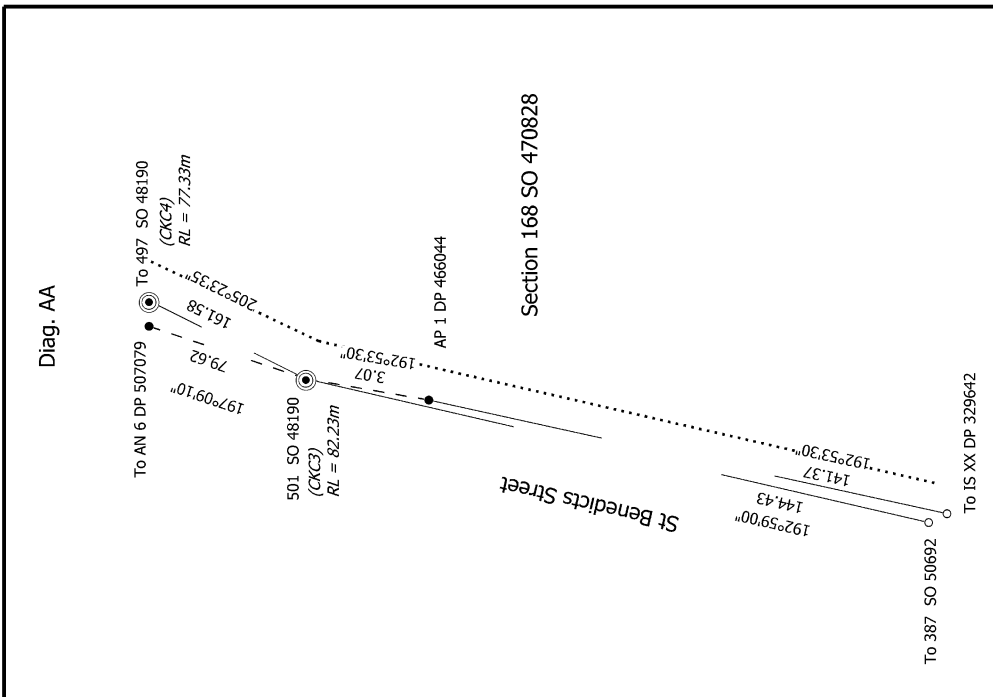


Diag. A

AK 159 SO 53873
(C9YP)
RL = 75.49m



Levels are in terms of Auckland Vertical Datum 1946
Origin of Levels SS 501 SO 48190 (CKC3)
RL = 82.83m.



S 1/1

Land District: North Auckland

Digitally Generated Plan
Generated on: 05/07/2023 11:45am Page 9 of 9

Unit Plan in Substitution of Units on Section 184 SO 470828

Surveyor: Simon John Reid
Firm: CKL
Date of Survey: 14/03/2023

Record of Survey
DP 383792

Deposited on: 16/06/2023