

A2 ORIGINAL

| Issue   | By | Checked | Approver* | Company | PNL Accp'l | Date  | Issue | By | Checked | Approver* | Company | PNL Accp'l | Date |
|---|----|---------|-----------|---------|------------|-------|-------|----|---------|-----------|---------|------------|------|
| A1 DESIGN - ROUTE AND POLE LOCATION   | GW | SP      |           | PNL     | -          | 11.22 |       |    |         |           |         |            |      |
| A2 POLES RELOCATED TO WESTERN SIDE OF FENCE TO AVOID CLASH WITH FIBRE CABLES EASEMENT NUMBERING ALTERED ACCORDINGLY | GW | SP      | MH        | PNL     | -          | 02.23 |       |    |         |           |         |            |      |

**66kV SUBTRANSMISSION**  
ATHOL TO KINGSTON 66kV / 22kV  
STAGE 1 ALLENDALE TO KINGSTON  
PROPOSED NEW EASEMENTS REQUIRED

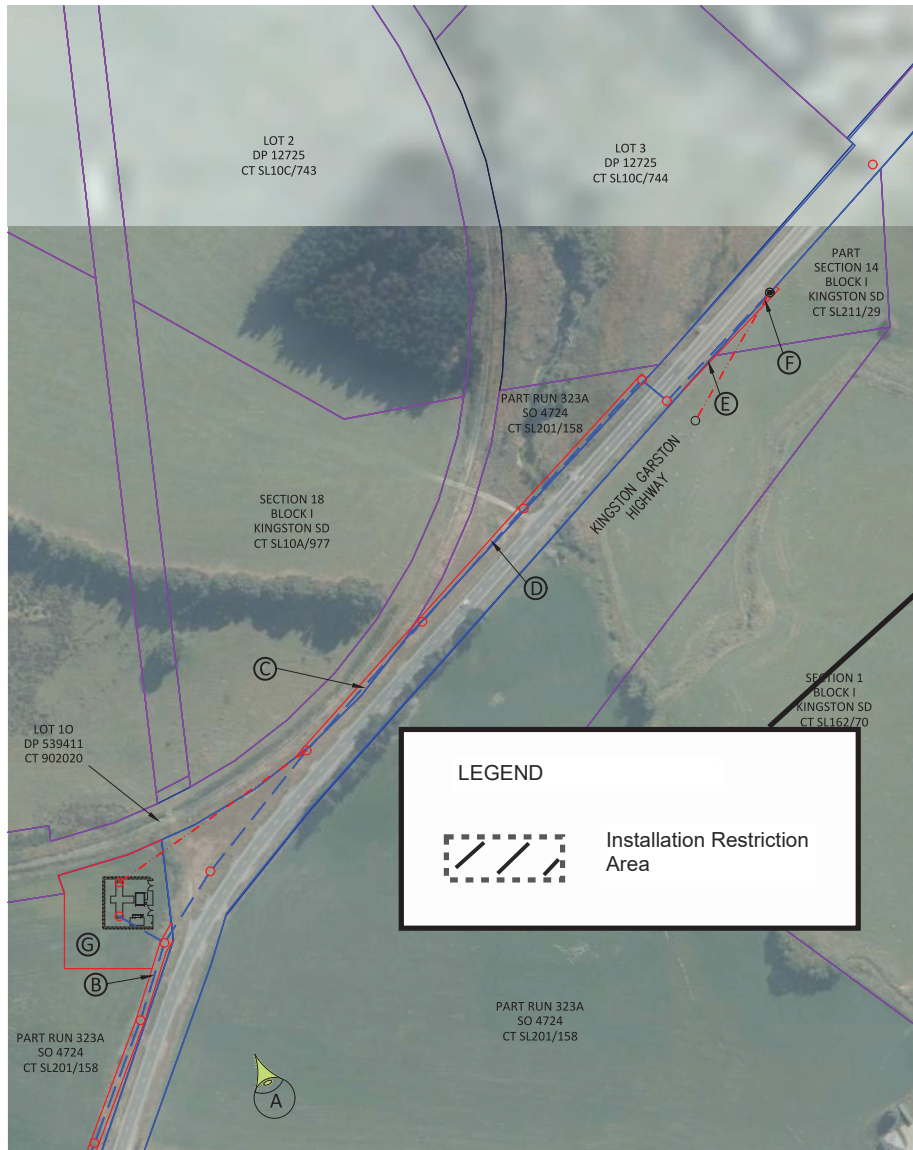
PNL SITE CODE DS2  
FOLDER REF. 22a  
SCALE NTS  
SHEET 1 of 5  
ISSUE A2

© PowerNet Limited, New Zealand. E

PNL acceptance of this drawing confirms PNL acceptance of the general engineering concept but does not constitute approval of the technical design, which is the responsibility of the Approver.  
The Approver declares that the technical information supplied on this drawing issue, including calculations, schedules etc, complies with all appropriate New Zealand Standards & Regulations, PowerNet Standards and Good Engineering Practice. (Include Registration type and number).



ENLARGEMENT A



**LEGEND**

Installation Restriction Area

SUBSTATION LOCATION



SUBSTATION LOCATION - FROM VIEW POINT A

SUBSTATION REQUIRED TO ACCOMMODATE INCREASE LOAD EXPECTED FROM FUTURE IRRIGATION AND RESIDENTIAL DEVELOPMENT. THE EXISTING LINE SUPPLYING KINGSTON IS AT CAPACITY AND SEVERE WEATHER EVENTS ENDANGER THE CAPABILITY OF THIS LINE.



DO NOT SCALE - IF IN DOUBT CHECK

100  
90  
80  
70  
60  
50  
40  
30  
20  
10  
0  
1:1

A2 ORIGINAL

| Issue   | By | Checked | Approver* | Company | PNL Accep't | Date  |
|---|----|---------|-----------|---------|-------------|-------|
| A1 DESIGN - ROUTE AND POLE LOCATION   | GW | SP      |           | PNL     | --          | 11.22 |
| A2 POLES RELOCATED TO WESTERN SIDE OF FENCE TO AVOID CLASH WITH FIBRE CABLES EASEMENT NUMBERING ALTERED ACCORDINGLY | GW | SP      | MH        | PNL     | --          | 02.23 |

| Issue | By | Checked | Approver* | Company | PNL Accep't | Date |
|-------|----|---------|-----------|---------|-------------|------|
|       |    |         |           |         |             |      |

66kV SUBTRANSMISSION

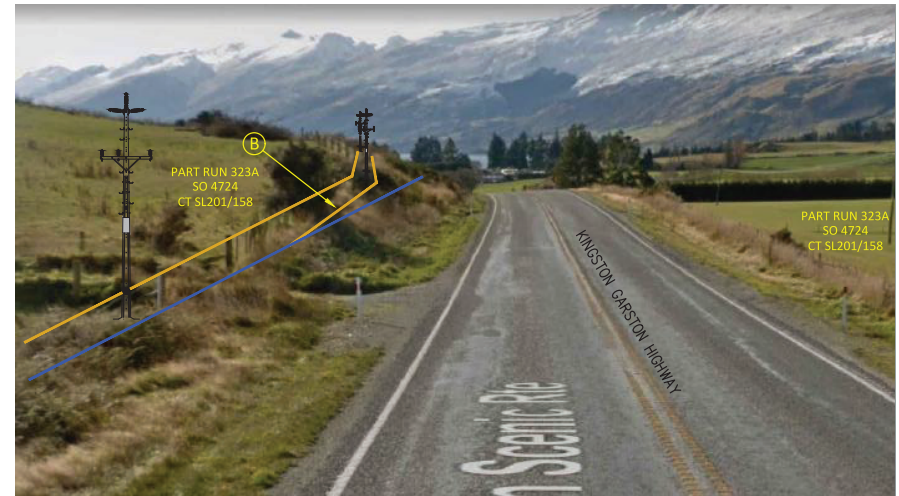
ATHOL TO KINGSTON 66kV / 22kV  
STAGE 1 ALLENDALE TO KINGSTON  
PROPOSED NEW EASEMENTS REQUIRED - ENLARGEMENT A

\* PNL acceptance of this drawing confirms PNL acceptance of the general engineering concept but does not constitute approval of the technical design, which is the responsibility of the Approver.  
The Approver declares that the technical information supplied on this drawing issue, including calculations, schedules etc, complies with all appropriate New Zealand Standards & Regulations, PowerNet Standards and Good Engineering Practice. (include Registration type and number).

ENLARGEMENT B



EASEMENT B LOCATION - FROM VIEWPOINT B



EASEMENT REQUIRED AS HIGH VOLTAGE LINES MUST HAVE 6.7m GROUND CLEARANCE (ASNZS2016 7000) AND POLES MUST BE MOVED TO TOP OF CUTTING TO ACHIEVE THIS. ALSO POLES BESIDE THE ROAD AT A CORNER WOULD BE A HAZARD

EASEMENT B LOCATION - FROM VIEWPOINT C



EASEMENT REQUIRED AS HIGH VOLTAGE LINES MUST HAVE 6.7m GROUND CLEARANCE (ASNZS2016 7000) AND POLES MUST BE MOVED TO TOP OF CUTTING TO ACHIEVE THIS. ALSO POLES BESIDE THE ROAD AT A CORNER WOULD BE A HAZARD

DO NOT SCALE - IF IN DOUBT CHECK

1:1  
0 10 20 30 40 50 60 70 80 90 100

A2 ORIGINAL

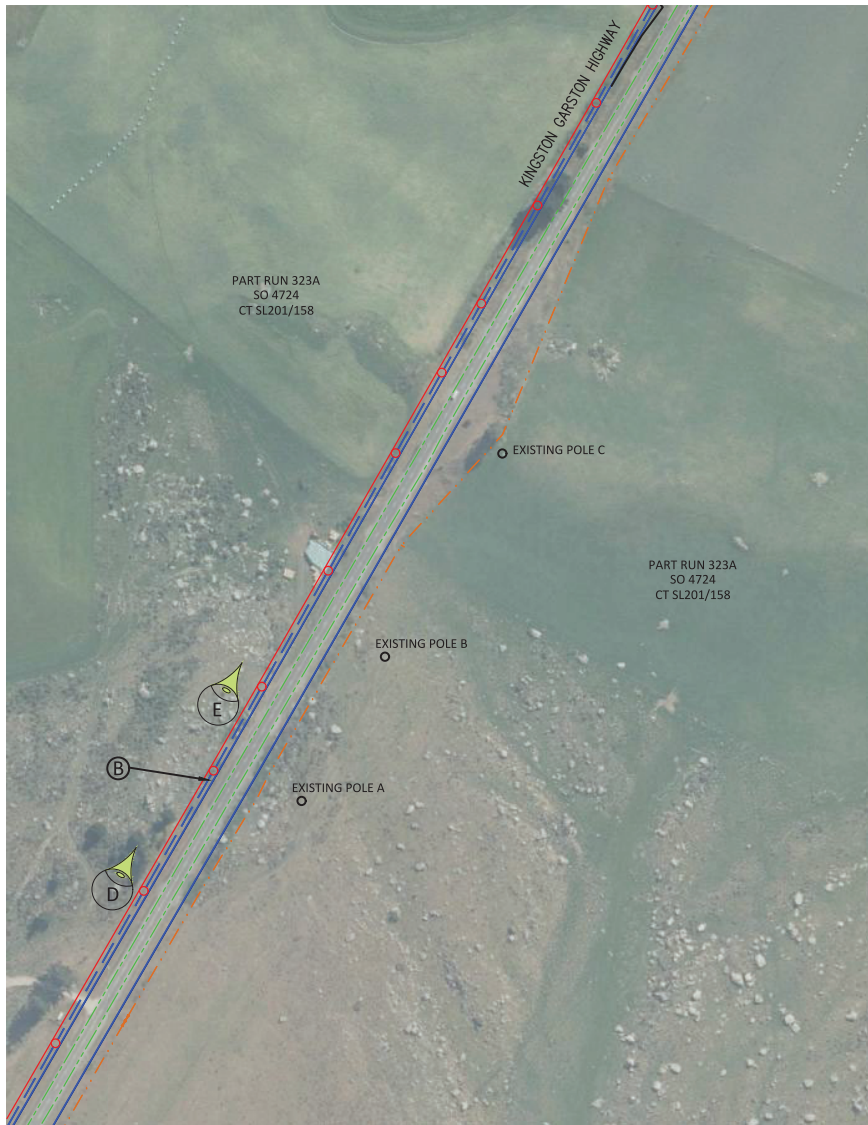
| Issue   | By | Checked | Approver* | Company | PNL Accp't | Date  | Issue | By | Checked | Approver* | Company | PNL Accp't | Date |
|---|----|---------|-----------|---------|------------|-------|-------|----|---------|-----------|---------|------------|------|
| A1 DESIGN - ROUTE AND POLE LOCATION   | GW | SP      |           | PNL     | --         | 11.22 |       |    |         |           |         |            |      |
| A2 POLES RELOCATED TO WESTERN SIDE OF FENCE TO AVOID CLASH WITH FIBRE CABLES EASEMENT NUMBERING ALTERED ACCORDINGLY | GW | SP      | MH        | PNL     | --         | 02.23 |       |    |         |           |         |            |      |

|   |  |              |
|---|--|--------------|
| <b>66kV SUBTRANSMISSION</b>                     |  | PNL SHE CODE |
| ATHOL TO KINGSTON 66kV / 22kV                   |  | DS2          |
| STAGE 1 ALLENDALE TO KINGSTON                   |  | FOLDER REF.  |
| PROPOSED NEW EASEMENTS REQUIRED - ENLARGEMENT B |  | 22g          |
| NUMBER SHEET                                    |  | SCALE        |
| E   |  | NTS          |
| 3 of 5  |  | ISSUE        |
| © PowerNet Limited, New Zealand.                |  | A2           |

\* PNL acceptance of this drawing confirms PNL acceptance of the general engineering concept but does not constitute approval of the technical design, which is the responsibility of the Approver.  
The Approver declares that the technical information supplied on this drawing issue, including calculations, schedules etc, complies with all appropriate New Zealand Standards & Regulations, PowerNet Standards and Good Engineering Practice. (Include Registration type and number).



ENLARGEMENT C



DO NOT SCALE - IF IN DOUBT CHECK

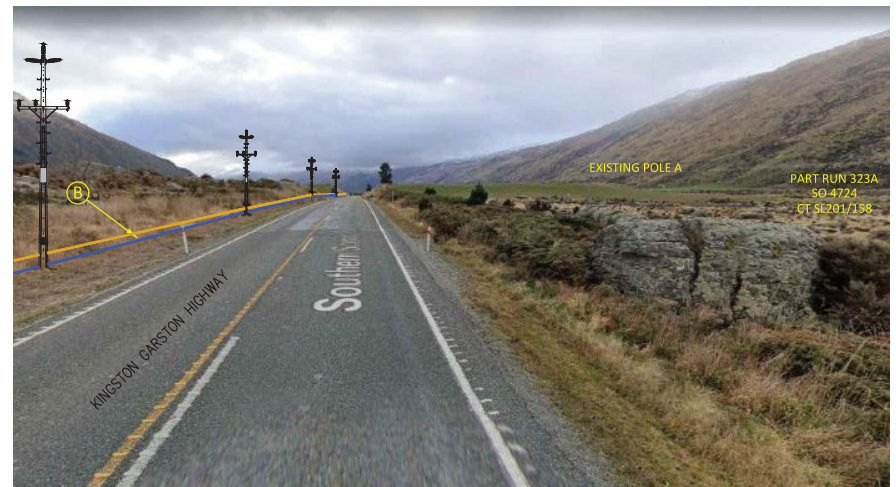
100  
90  
80  
70  
60  
50  
40  
30  
20  
10  
0

EASEMENT B LOCATION - FROM VIEWPOINT E



EASEMENT REQUIRED AS HIGH VOLTAGE LINES MUST HAVE 6.7m GROUND CLEARANCE (ASNZS2016 7000). POLES MUST BE MOVED TO TOP OF CUTTING TO ACHIEVE THIS. POLES MOVED FURTHER TO THE WEST FOR BETTER GROUND CONDITIONS.

EASEMENT B LOCATION - FROM VIEWPOINT D



EASEMENT REQUIRED AS HIGH VOLTAGE LINES MUST HAVE 6.7m GROUND CLEARANCE (ASNZS2016 7000). POLES MUST BE MOVED TO TOP OF CUTTING TO ACHIEVE THIS. POLES MOVED FURTHER TO THE WEST FOR BETTER GROUND CONDITIONS.

A2 ORIGINAL

| Issue   | By | Checked | Approver* | Company | PNL Accep't | Date  | Issue | By | Checked | Approver* | Company | PNL Accep't | Date | PNL SHE CODE    |
|---|----|---------|-----------|---------|-------------|-------|-------|----|---------|-----------|---------|-------------|------|-----------------|
| A1 DESIGN - ROUTE AND POLE LOCATION   | GW | SP      |           | PNL     | --          | 11.22 |       |    |         |           |         |             |      | DS2             |
| A2 POLES RELOCATED TO WESTERN SIDE OF FENCE TO AVOID CLASH WITH FIBRE CABLES EASEMENT NUMBERING ALTERED ACCORDINGLY | GW | SP      | MH        | PNL     | --          | 02.23 |       |    |         |           |         |             |      | FOLDER REF. 22g |
|   |    |         |           |         |             |       |       |    |         |           |         |             |      | SCALE NTS       |
|   |    |         |           |         |             |       |       |    |         |           |         |             |      | ISSUE           |

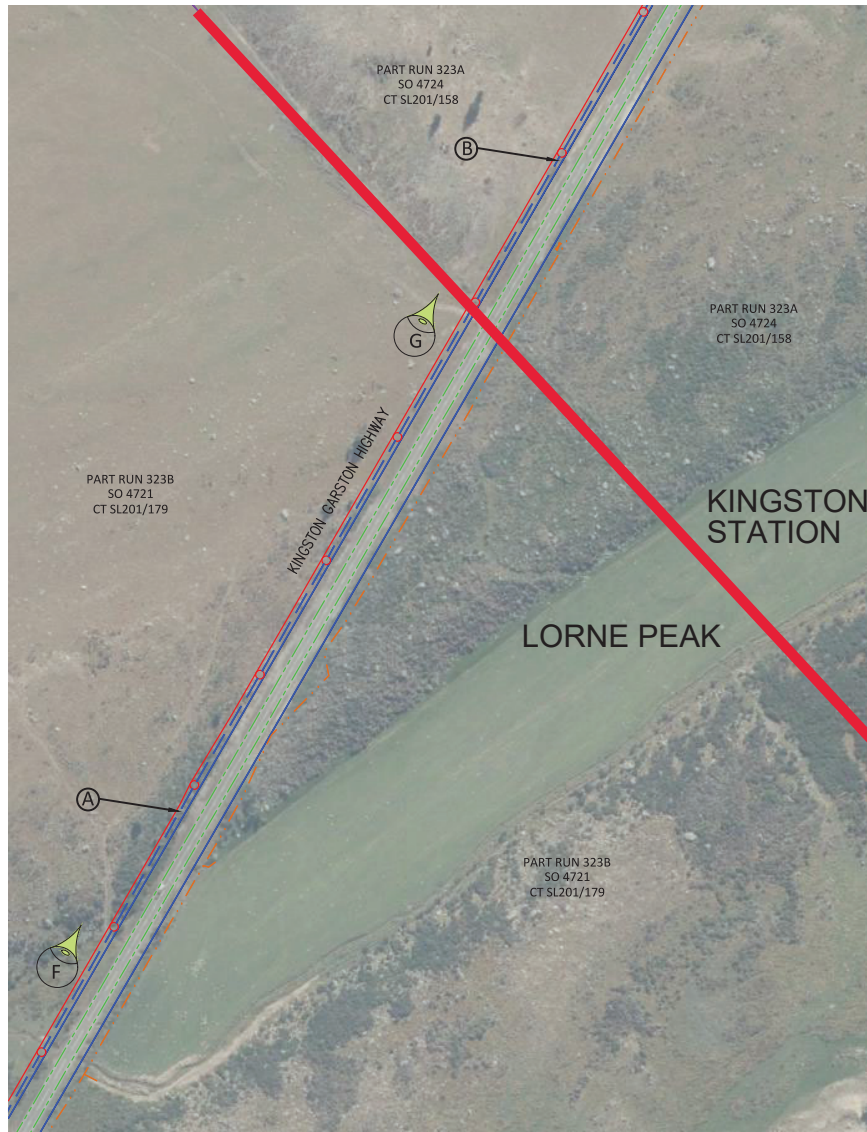
66kV SUBTRANSMISSION

ATHOL TO KINGSTON 66kV / 22kV  
STAGE 1 ALLENDALE TO KINGSTON  
PROPOSED NEW EASEMENTS REQUIRED - ENLARGEMENT C

\* PNL acceptance of this drawing confirms PNL acceptance of the general engineering concept but does not constitute approval of the technical design, which is the responsibility of the Approver.  
The Approver declares that the technical information supplied on this drawing issue, including calculations, schedules etc, complies with all appropriate New Zealand Standards & Regulations, PowerNet Standards and Good Engineering Practice. (Include Registration type and number).

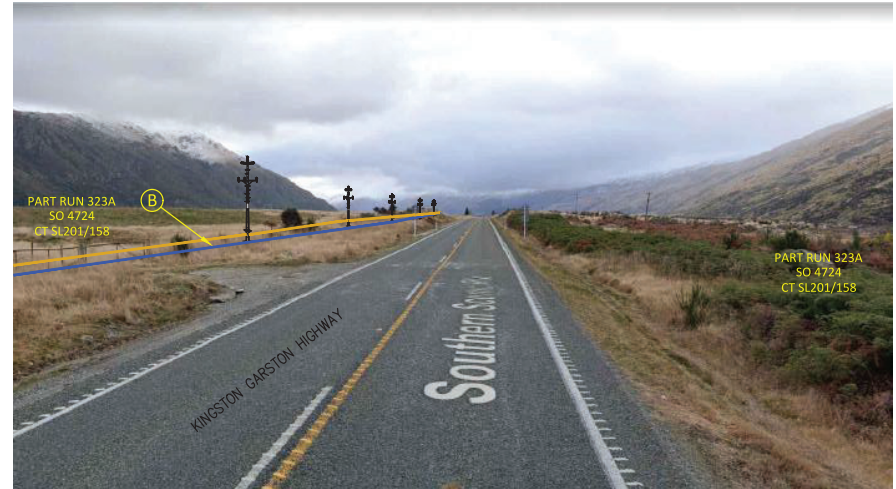


ENLARGEMENT D



EASEMENT B LOCATION - FROM VIEWPOINT G

EASEMENT REQUIRED AS HIGH VOLTAGE LINES MUST HAVE 6.7m GROUND CLEARANCE (ASNZS2016 7000) . POLES MUST BE MOVED TO TOP OF CUTTING TO ACHIEVE THIS. POLES MOVED FURTHER TO THE WEST FOR BETTER GROUND CONDITIONS.



EASEMENT A LOCATION - FROM VIEWPOINT F

EASEMENT REQUIRED AS HIGH VOLTAGE LINES MUST HAVE 6.7m GROUND CLEARANCE (ASNZS2016 7000) . POLES MUST BE MOVED TO TOP OF CUTTING TO ACHIEVE THIS. POLES MOVED FURTHER TO THE WEST FOR BETTER GROUND CONDITIONS.



DO NOT SCALE - IF IN DOUBT CHECK

100  
90  
80  
70  
60  
50  
40  
30  
20  
10  
0

A2 ORIGINAL

| Issue   | By | Checked | Approver* | Company | PNL Accep't | Date  | Issue | By | Checked | Approver* | Company | PNL Accep't | Date | PNL SHE CODE    |
|---|----|---------|-----------|---------|-------------|-------|-------|----|---------|-----------|---------|-------------|------|-----------------|
| A1 DESIGN - ROUTE AND POLE LOCATION   | GW | SP      |           | PNL     | --          | 11.22 |       |    |         |           |         |             |      | DS2             |
| A2 POLES RELOCATED TO WESTERN SIDE OF FENCE TO AVOID CLASH WITH FIBRE CABLES EASEMENT ALTERED ACCORDINGLY | GW | SP      | MH        | PNL     | --          | 02.23 |       |    |         |           |         |             |      | FOLDER REF. 22a |
|   |    |         |           |         |             |       |       |    |         |           |         |             |      | SCALE NTS       |
|   |    |         |           |         |             |       |       |    |         |           |         |             |      | ISSUE           |

**66kV SUBTRANSMISSION**  
 ATHOL TO KINGSTON 66kV / 22kV  
 STAGE 1 ALLENDALE TO KINGSTON  
 PROPOSED NEW EASEMENTS REQUIRED - ENLARGEMENT D

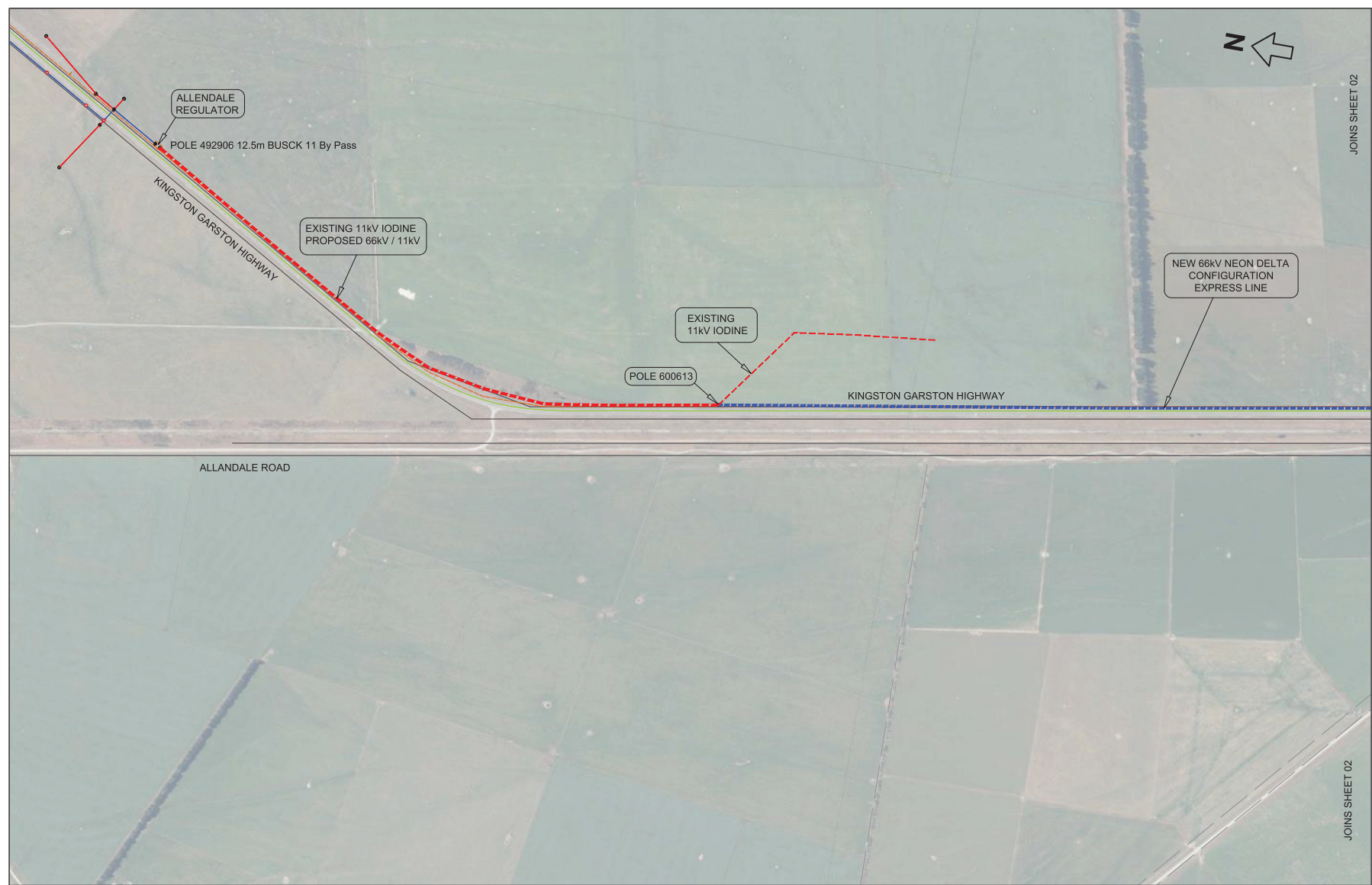
© PowerNet Limited, New Zealand. NUMBER E SHEET 5 of 5

\* PNL acceptance of this drawing confirms PNL acceptance of the general engineering concept but does not constitute approval of the technical design, which is the responsibility of the Approver.  
 The Approver declares that the technical information supplied on this drawing issues, including calculations, schedules etc, complies with all appropriate New Zealand Standards & Regulations, PowerNet Standards and Good Engineering Practice. (include Registration type and number).



JOINS SHEET 02

JOINS SHEET 02



DO NOT SCALE - F IN DOUBT CHECK

1:1  
0 10 20 30 40 50 60 70 80 90 100

A2 ORIGINAL

| Issue                                | By | Checked | Approver* | Company | PNL Accp'l | Date  | Issue | By | Checked | Approver* | Company | PNL Accp'l | Date |
|--------------------------------------|----|---------|-----------|---------|------------|-------|-------|----|---------|-----------|---------|------------|------|
| A1 PROPOSED CORRIDOR OF EXPRESS LINE | CW | MH      |           | PNL     | -          | 02.23 |       |    |         |           |         |            |      |
|                                      |    |         |           |         |            |       |       |    |         |           |         |            |      |
|                                      |    |         |           |         |            |       |       |    |         |           |         |            |      |

|                                     |  |                    |                          |               |
|-------------------------------------|--|--------------------|--------------------------|---------------|
| <b>ALLENDALE REGULATOR TO ATHOL</b> |  |                    |                          | PNL SITE CODE |
| ROUTE CORRIDOR                      |  |                    |                          | FOLDER REF.   |
| SCALE                               |  |                    |                          | 1:4000        |
| ISSUE                               |  |                    |                          |               |
| © PowerNet Limited, New Zealand.    |  | NUMBER<br><b>E</b> | SHEET<br><b>01 of 09</b> | A1            |

\* PNL acceptance of this drawing confirms PNL acceptance of the general engineering concept but does not constitute approval of the technical design, which is the responsibility of the Approver.  
 \* The Approver declares that the technical information supplied on this drawing issue, including calculations, schedules etc, complies with all appropriate New Zealand Standards & Regulations, PowerNet Standards and Good Engineering Practice. (Include Registration type and number).





DO NOT SCALE - P IN DOUBT CHECK



A2 ORIGINAL

| Issue                                | By | Checked | Approved | Company | PIL Acq <sup>1</sup> | Date  | Issue | By | Checked | Approved | Company | PIL Acq <sup>1</sup> | Date |
|--------------------------------------|----|---------|----------|---------|----------------------|-------|-------|----|---------|----------|---------|----------------------|------|
| A1 PROPOSED CORRIDOR OF EXPRESS LINE | GW | MH      |          | PNL     | -                    | 02.23 |       |    |         |          |         |                      |      |
|                                      |    |         |          |         |                      |       |       |    |         |          |         |                      |      |
|                                      |    |         |          |         |                      |       |       |    |         |          |         |                      |      |
|                                      |    |         |          |         |                      |       |       |    |         |          |         |                      |      |

**ALLENDALE REGULATOR TO ATHOL**

ROUTE CORRIDOR

© PowerNet Limited, New Zealand

NAME: E

NO: 02 of 09

PIL USE CASE

SCALE: 1:4000

FILE: A1

<sup>1</sup> PIL acceptance of this drawing confirms PIL acceptance of the general engineering concept but does not constitute approval of the technical design, which is the responsibility of the Approver. The Approver declares that the technical engineering supplied in this document meets, including calculations, standards and compliance with all applicable New Zealand Standards & Regulations, PowerNet Standards and Good Engineering Practice. (Include Registrations, type and number).