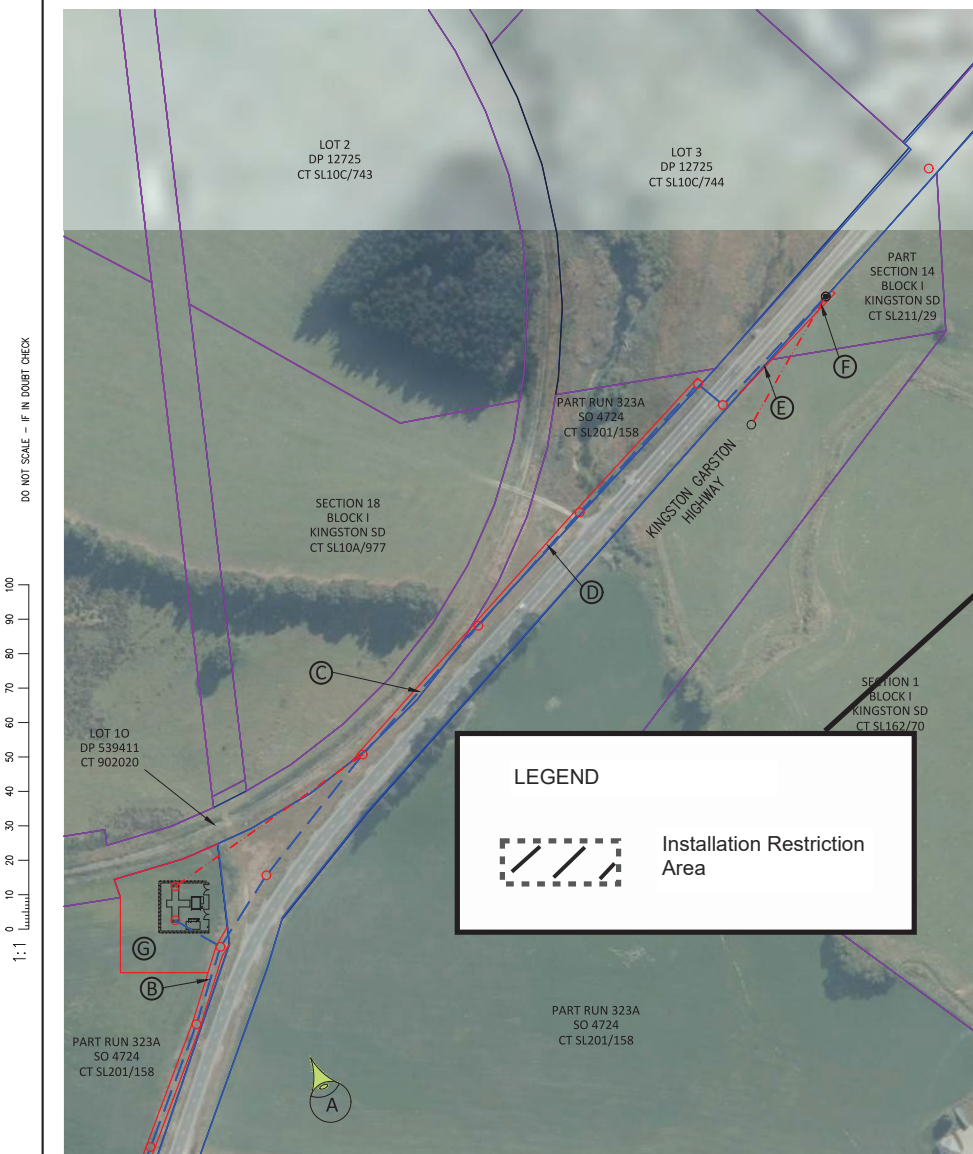



ENLARGEMENT A



LEGEND

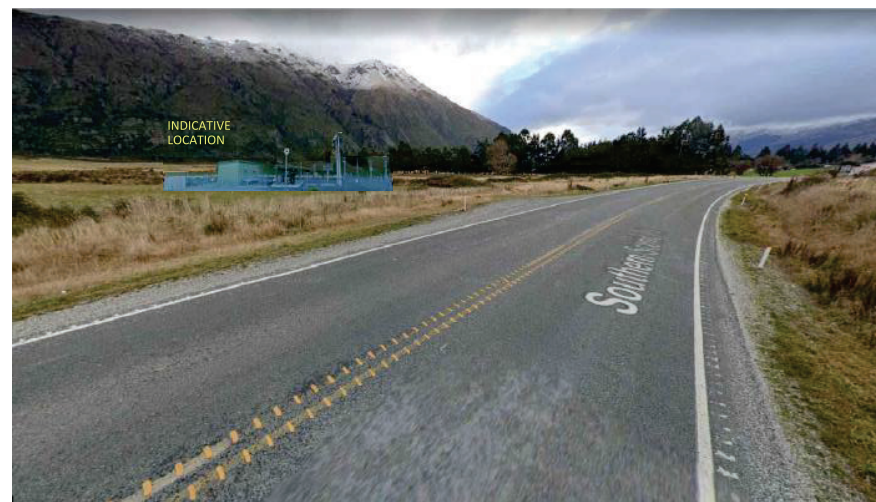
 Installation Restriction Area

SUBSTATION LOCATION



SUBSTATION LOCATION - FROM VIEW POINT A

SUBSTATION REQUIRED TO ACCOMMODATE INCREASE LOAD EXPECTED FROM FUTURE IRRIGATION AND RESIDENTIAL DEVELOPMENT. THE EXISTING LINE SUPPLYING KINGSTON IS AT CAPACITY AND SEVERE WEATHER EVENTS ENDANGER THE CAPABILITY OF THIS LINE.



DO NOT SCALE - IF IN DOUBT CHECK

1:1

A2 ORIGINAL

Issue	By	Checked	Approver*	Company	PNL Accep't	Date
A1 DESIGN - ROUTE AND POLE LOCATION	GW	SP		PNL	--	11.22
A2 POLES RELOCATED TO WESTERN SIDE OF FENCE TO AVOID CLASH WITH FIBRE CABLES EASEMENT NUMBERING ALTERED ACCORDINGLY	GW	SP	MH	PNL	--	02.23

Issue	By	Checked	Approver*	Company	PNL Accep't	Date

66kV SUBTRANSMISSION

ATHOL TO KINGSTON 66kV / 22kV
 STAGE 1 ALLENDALE TO KINGSTON
 PROPOSED NEW EASEMENTS REQUIRED - ENLARGEMENT A

© PowerNet Limited, New Zealand.	NUMBER E	SHEET 2 of 5	PNL SHE CODE DS2
----------------------------------	-------------	-----------------	---------------------

* PNL acceptance of this drawing confirms PNL acceptance of the general engineering concept but does not constitute approval of the technical design, which is the responsibility of the Approver.
 The Approver declares that the technical information supplied on this drawing issue, including calculations, schedules etc, complies with all appropriate New Zealand Standards & Regulations, PowerNet Standards and Good Engineering Practice. (Include Registration type and number).

ENLARGEMENT B



DO NOT SCALE - IF IN DOUBT CHECK

100
90
80
70
60
50
40
30
20
10
0
1:1

EASEMENT B LOCATION - FROM VIEWPOINT B



EASEMENT REQUIRED AS HIGH VOLTAGE LINES MUST HAVE 6.7m GROUND CLEARANCE (ASNZS2016 7000) AND POLES MUST BE MOVED TO TOP OF CUTTING TO ACHIEVE THIS. ALSO POLES BESIDE THE ROAD AT A CORNER WOULD BE A HAZARD

EASEMENT B LOCATION - FROM VIEWPOINT C



EASEMENT REQUIRED AS HIGH VOLTAGE LINES MUST HAVE 6.7m GROUND CLEARANCE (ASNZS2016 7000) AND POLES MUST BE MOVED TO TOP OF CUTTING TO ACHIEVE THIS. ALSO POLES BESIDE THE ROAD AT A CORNER WOULD BE A HAZARD

A2 ORIGINAL

Issue	By	Checked	Approver*	Company	PNL Accp't	Date	Issue	By	Checked	Approver*	Company	PNL Accp't	Date
A1 DESIGN - ROUTE AND POLE LOCATION	GW	SP		PNL	--	11.22							
A2 POLES RELOCATED TO WESTERN SIDE OF FENCE TO AVOID CLASH WITH FIBRE CABLES EASEMENT NUMBERING ALTERED ACCORDINGLY	GW	SP	MH	PNL	--	02.23							

66kV SUBTRANSMISSION

ATHOL TO KINGSTON 66kV / 22kV
STAGE 1 ALLENDALE TO KINGSTON
PROPOSED NEW EASEMENTS REQUIRED - ENLARGEMENT B

* PNL acceptance of this drawing confirms PNL acceptance of the general engineering concept but does not constitute approval of the technical design, which is the responsibility of the Approver.
The Approver declares that the technical information supplied on this drawing issue, including calculations, schedules etc, complies with all appropriate New Zealand Standards & Regulations, PowerNet Standards and Good Engineering Practice. (Include Registration type and number).

ENLARGEMENT C



DO NOT SCALE - IF IN DOUBT CHECK

100
90
80
70
60
50
40
30
20
10
0

EASEMENT B LOCATION - FROM VIEWPOINT E



EASEMENT REQUIRED AS HIGH VOLTAGE LINES MUST HAVE 6.7m GROUND CLEARANCE (ASNZS2016 7000). POLES MUST BE MOVED TO TOP OF CUTTING TO ACHIEVE THIS. POLES MOVED FURTHER TO THE WEST FOR BETTER GROUND CONDITIONS.

EASEMENT B LOCATION - FROM VIEWPOINT D



EASEMENT REQUIRED AS HIGH VOLTAGE LINES MUST HAVE 6.7m GROUND CLEARANCE (ASNZS2016 7000). POLES MUST BE MOVED TO TOP OF CUTTING TO ACHIEVE THIS. POLES MOVED FURTHER TO THE WEST FOR BETTER GROUND CONDITIONS.

A2 ORIGINAL

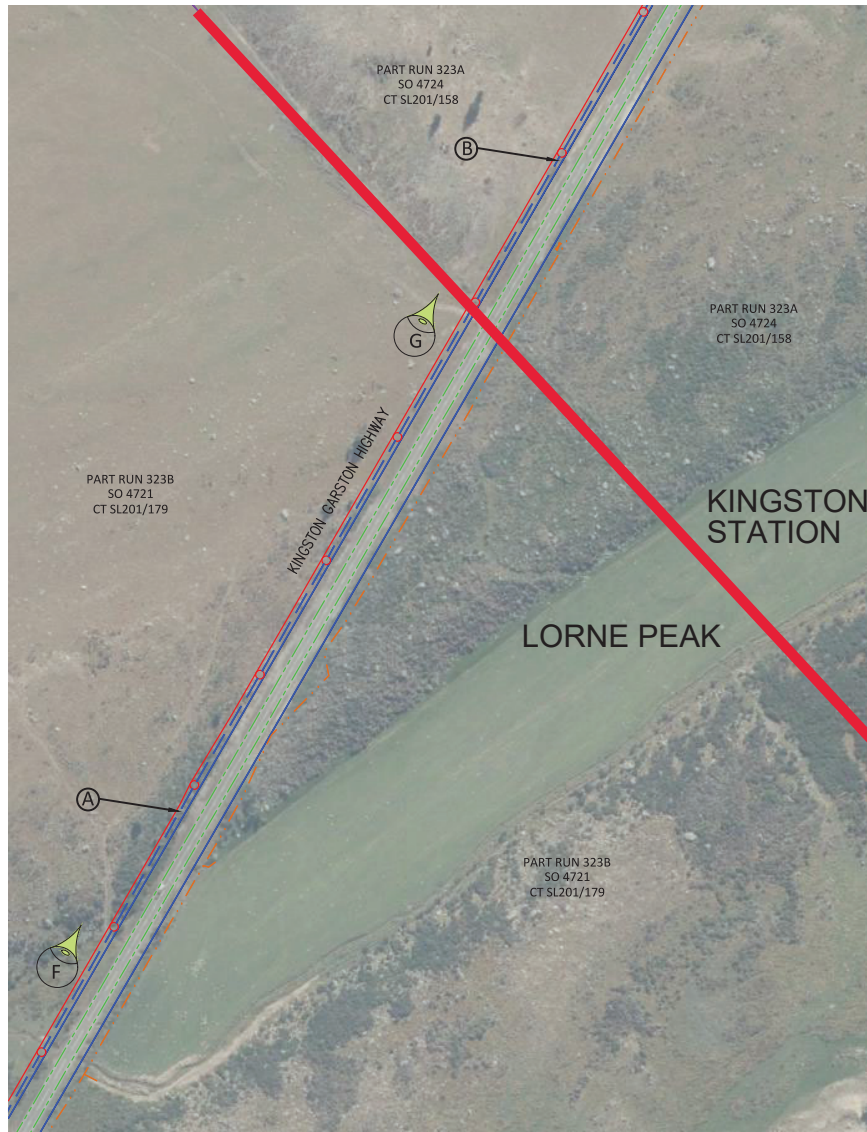
Issue	By	Checked	Approver*	Company	PNL Accep't	Date	Issue	By	Checked	Approver*	Company	PNL Accep't	Date
A1 DESIGN - ROUTE AND POLE LOCATION	GW	SP		PNL	--	11.22							
A2 POLES RELOCATED TO WESTERN SIDE OF FENCE TO AVOID CLASH WITH FIBRE CABLES EASEMENT NUMBERING ALTERED ACCORDINGLY	GW	SP	MH	PNL	--	02.23							

66kV SUBTRANSMISSION

ATHOL TO KINGSTON 66kV / 22kV
STAGE 1 ALLENDALE TO KINGSTON
PROPOSED NEW EASEMENTS REQUIRED - ENLARGEMENT C

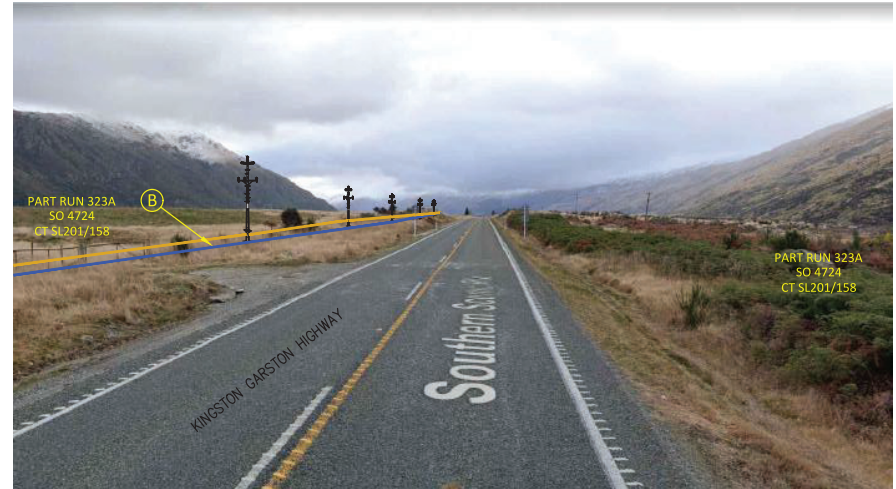
* PNL acceptance of this drawing confirms PNL acceptance of the general engineering concept but does not constitute approval of the technical design, which is the responsibility of the Approver.
The Approver declares that the technical information supplied on this drawing issue, including calculations, schedules etc, complies with all appropriate New Zealand Standards & Regulations, PowerNet Standards and Good Engineering Practice. (Include Registration type and number).

ENLARGEMENT D



EASEMENT B LOCATION - FROM VIEWPOINT G

EASEMENT REQUIRED AS HIGH VOLTAGE LINES MUST HAVE 6.7m GROUND CLEARANCE (ASNZS2016 7000) . POLES MUST BE MOVED TO TOP OF CUTTING TO ACHIEVE THIS. POLES MOVED FURTHER TO THE WEST FOR BETTER GROUND CONDITIONS.



EASEMENT A LOCATION - FROM VIEWPOINT F

EASEMENT REQUIRED AS HIGH VOLTAGE LINES MUST HAVE 6.7m GROUND CLEARANCE (ASNZS2016 7000) . POLES MUST BE MOVED TO TOP OF CUTTING TO ACHIEVE THIS. POLES MOVED FURTHER TO THE WEST FOR BETTER GROUND CONDITIONS.



DO NOT SCALE - IF IN DOUBT CHECK

100
90
80
70
60
50
40
30
20
10
0

A2 ORIGINAL

Issue	By	Checked	Approver*	Company	PNL Accep't	Date	Issue	By	Checked	Approver*	Company	PNL Accep't	Date	PNL SHE CODE
A1 DESIGN - ROUTE AND POLE LOCATION	GW	SP		PNL	--	11.22								DS2
A2 POLES RELOCATED TO WESTERN SIDE OF FENCE TO AVOID CLASH WITH FIBRE CABLES EASEMENT ALTERED ACCORDINGLY	GW	SP	MH	PNL	--	02.23								FOLDER REF. 22a
														SCALE NTS
														ISSUE

66kV SUBTRANSMISSION
 ATHOL TO KINGSTON 66kV / 22kV
 STAGE 1 ALLENDALE TO KINGSTON
 PROPOSED NEW EASEMENTS REQUIRED - ENLARGEMENT D

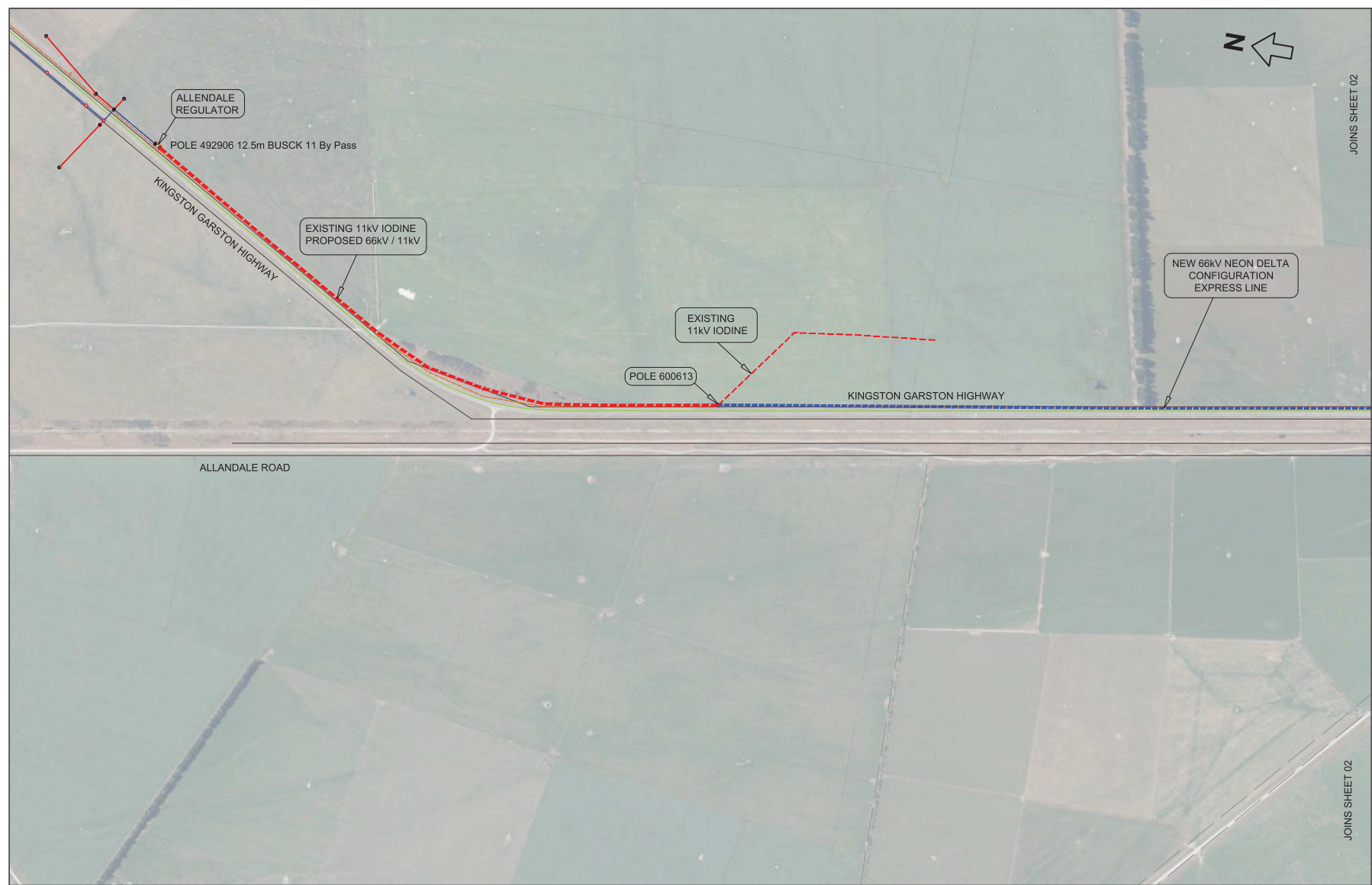
© PowerNet Limited, New Zealand. NUMBER E SHEET 5 of 5

* PNL acceptance of this drawing confirms PNL acceptance of the general engineering concept but does not constitute approval of the technical design, which is the responsibility of the Approver.
 The Approver declares that the technical information supplied on this drawing issues, including calculations, schedules etc, complies with all appropriate New Zealand Standards & Regulations, PowerNet Standards and Good Engineering Practice. (include Registration type and number).



JOINS SHEET 02

JOINS SHEET 02



DO NOT SCALE - F IN DOUBT CHECK

1:1
0 10 20 30 40 50 60 70 80 90 100

A2 ORIGINAL

Issue	By	Checked	Approver*	Company	PNL Accp'l	Date	Issue	By	Checked	Approver*	Company	PNL Accp'l	Date
A1 PROPOSED CORRIDOR OF EXPRESS LINE	CW	MH		PNL	-	02.23							

ALLENDALE REGULATOR TO ATHOL				PNL SITE CODE
ROUTE CORRIDOR				FOLDER REF.
SCALE 1:4000				ISSUE
© PowerNet Limited, New Zealand.		NUMBER E	SHEET 01 of 09	A1

* PNL acceptance of this drawing confirms PNL acceptance of the general engineering concept but does not constitute approval of the technical design, which is the responsibility of the Approver.
 * The Approver declares that the technical information supplied on this drawing issue, including calculations, schedules etc, complies with all appropriate New Zealand Standards & Regulations, PowerNet Standards and Good Engineering Practice. (Include Registration type and number).



DO NOT SCALE - P IN DOUBT CHECK

1:1

A2 ORIGINAL

Issue	By	Checked	Approved	Company	PIL Acq ¹	Date	Issue	By	Checked	Approved	Company	PIL Acq ¹	Date
A1 PROPOSED CORRIDOR OF EXPRESS LINE	GW	MH		PNL	-	02.23							

ALLENDALE REGULATOR TO ATHOL

ROUTE CORRIDOR

© PowerNet Limited, New Zealand

NAME: E

NO: 02 of 09

PIL USE CASE: A1

SCALE: 1:4000

¹ PIL acceptance of this drawing confirms PIL acceptance of the general engineering concept but does not constitute approval of the technical design, which is the responsibility of the Approver. The Approver declares that the technical engineering supplied in this document meets, including calculations, standards and compliance with all applicable New Zealand Standards & Regulations, Provincial Standards and Good Engineering Practice. (Include Registrations, type and number).