



# Requesting imagery during an emergency

## Quick guide

Contact LINZ Duty Team: [emergency@linz.govt.nz](mailto:emergency@linz.govt.nz) | 027 357 0029

### ? How can LINZ support your response?

In an emergency LINZ coordinates satellite imagery, aerial photography, LiDAR and bathymetry data, including:

- monitor imagery availability
- coordinate data requirements and funding
- publish imagery
- share Imagery Status Reports

### i What information do we need?

- Timing** How urgent is the data capture?
- Location** What is the area of interest?
- Conditions** What are the current conditions at the location?
- Budget** What budget is available?
- Resolution** What features need to be visible?
- Purpose** Will imagery be analysed to extract data?
- Licensing** Who will the imagery be shared with?
- Intent** What will support the Controller and Recovery Manager?



Scan to access  
Emergency Imagery Toolkit



More information in  
Emergency Imagery Handbook

Contact the LINZ Duty Team in an emergency and during an exercise

Email: [emergency@linz.govt.nz](mailto:emergency@linz.govt.nz)  
Phone: 027 357 0029  
Website: [linz.govt.nz/emergency](https://linz.govt.nz/emergency)



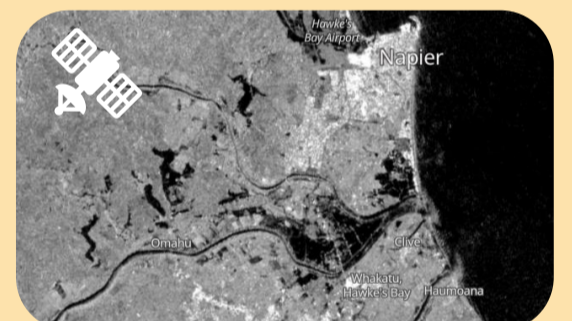
### How is imagery used?



**Reconnaissance** – snapshot to inform wide area impact assessment and prioritisation.



**Satellite imagery** – overview of impact, analyse data to extract information and inform recovery.



**Radar** – analyse data to extract information including flood extents or fire perimeters.



**Aerial imagery** – Record of the event for LIM Reports, insurance claims and community meetings.



**Drone** – gather intel for a small, local sites. Easy to recapture the same site multiple times.