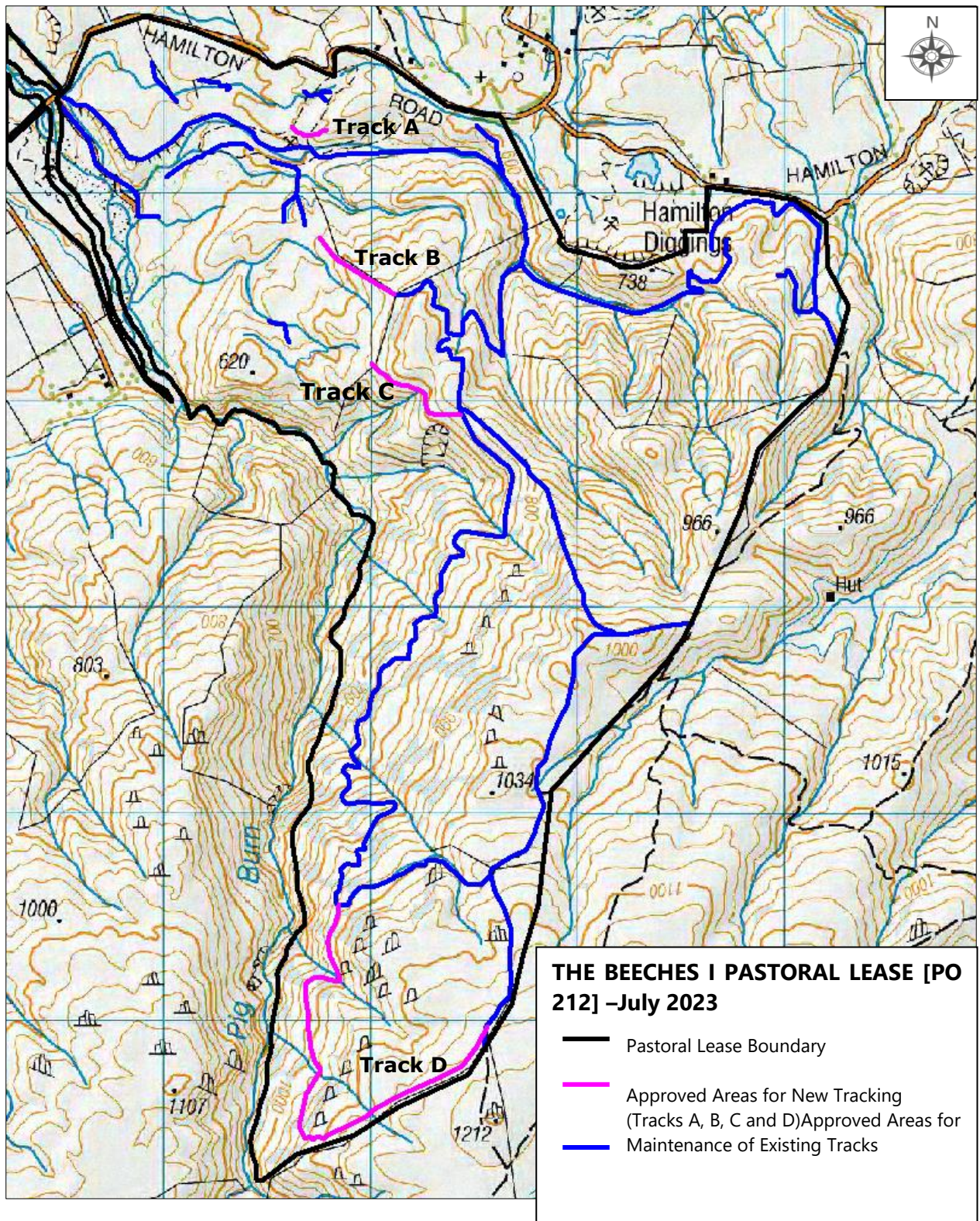


1. Topographical map of showing areas approved for tracking (Scale 1:25,000)



*This application received on 31<sup>st</sup> of July 2021 is processed in accordance with Schedule 1AA, clause 4 of the Crown Pastoral Land Act 1998, which requires the Commissioner to deal with the application as if the amendment Act had not been enacted.*

2. Google Earth images showing areas approved for new tracking, subject to the conditions detailed in this Notice of Decision.

**Track A**



**Track B**



*This application received on 31<sup>st</sup> of July 2021 is processed in accordance with Schedule 1AA, clause 4 of the Crown Pastoral Land Act 1998, which requires the Commissioner to deal with the application as if the amendment Act had not been enacted.*

### Track C



### Track D



*This application received on 31<sup>st</sup> of July 2021 is processed in accordance with Schedule 1AA, clause 4 of the Crown Pastoral Land Act 1998, which requires the Commissioner to deal with the application as if the amendment Act had not been enacted.*